



# Full wwPDB X-ray Structure Validation Report ⓘ

Sep 8, 2025 – 02:14 pm BST

PDB ID : 9S5K / pdb\_00009s5k  
Title : ADC-30 class C beta-lactamase in a di-covalent complex with benzoxaborole AK-431  
Authors : Hinchliffe, P.; Spencer, J.  
Deposited on : 2025-07-29  
Resolution : 1.38 Å(reported)

This is a Full wwPDB X-ray Structure Validation Report for a publicly released PDB entry.

We welcome your comments at [validation@mail.wwpdb.org](mailto:validation@mail.wwpdb.org)

A user guide is available at

<https://www.wwpdb.org/validation/2017/XrayValidationReportHelp>

with specific help available everywhere you see the ⓘ symbol.

The types of validation reports are described at

<http://www.wwpdb.org/validation/2017/FAQs#types>.

---

The following versions of software and data (see [references ⓘ](#)) were used in the production of this report:

MolProbity : **FAILED**  
Mogul : 1.8.4, CSD as541be (2020)  
Xtriage (Phenix) : 2.0rc1  
EDS : 3.0  
buster-report : 1.1.7 (2018)  
Percentile statistics : 20231227.v01 (using entries in the PDB archive December 27th 2023)  
CCP4 : 9.0.006 (Gargrove)  
Density-Fitness : 1.0.12  
Ideal geometry (proteins) : Engh & Huber (2001)  
Ideal geometry (DNA, RNA) : Parkinson et al. (1996)  
Validation Pipeline (wwPDB-VP) : 2.45.1

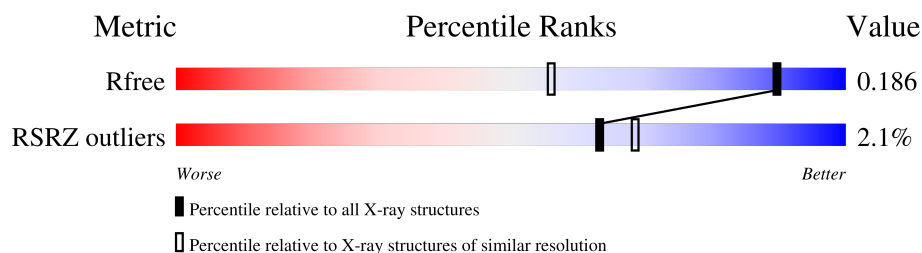
# 1 Overall quality at a glance

The following experimental techniques were used to determine the structure:

*X-RAY DIFFRACTION*

The reported resolution of this entry is 1.38 Å.

Percentile scores (ranging between 0-100) for global validation metrics of the entry are shown in the following graphic. The table shows the number of entries on which the scores are based.



Metric	Whole archive (#Entries)	Similar resolution (#Entries, resolution range(Å))
$R_{free}$	164625	3869 (1.40-1.36)
RSRZ outliers	164620	3867 (1.40-1.36)

MolProbity failed to run properly - the sequence quality summary graphics cannot be shown.

## 2 Entry composition [i](#)

There are 5 unique types of molecules in this entry. The entry contains 6842 atoms, of which 0 are hydrogens and 0 are deuteriums.

In the tables below, the ZeroOcc column contains the number of atoms modelled with zero occupancy, the AltConf column contains the number of residues with at least one atom in alternate conformation and the Trace column contains the number of residues modelled with at most 2 atoms.

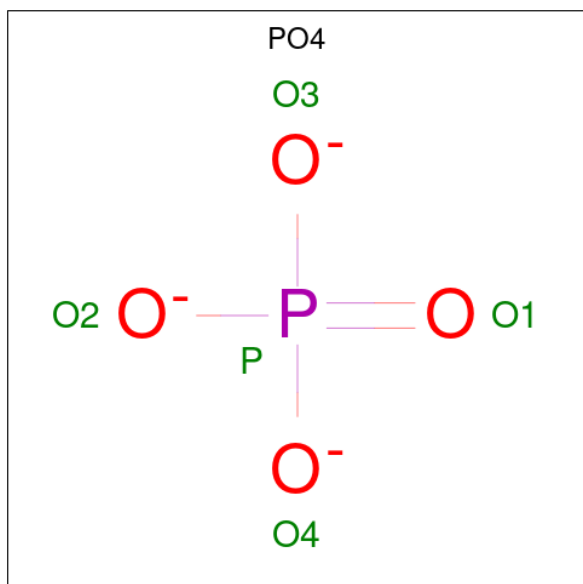
- Molecule 1 is a protein called Beta-lactamase.

Mol	Chain	Residues	Atoms					ZeroOcc	AltConf	Trace
1	B	359	Total	C	N	O	S	0	11	0
			2944	1885	493	557	9			
1	A	358	Total	C	N	O	S	0	6	0
			2893	1858	483	543	9			

There are 2 discrepancies between the modelled and reference sequences:

Chain	Residue	Modelled	Actual	Comment	Reference
B	0	SER	-	expression tag	UNP A7XM81
A	0	SER	-	expression tag	UNP A7XM81

- Molecule 2 is PHOSPHATE ION (CCD ID: PO4) (formula: O<sub>4</sub>P).



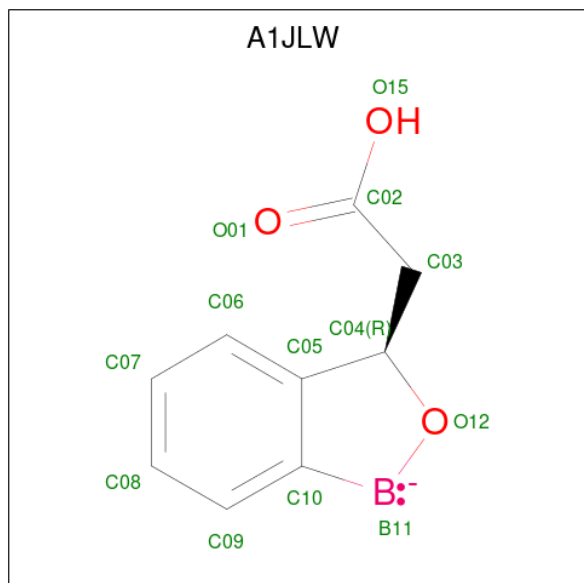
Mol	Chain	Residues	Atoms			ZeroOcc	AltConf
2	B	1	Total	O	P	0	0
			5	4	1		

*Continued on next page...*

Continued from previous page...

Mol	Chain	Residues	Atoms			ZeroOcc	AltConf
2	B	1	Total	O	P	0	1
			5	4	1		
2	A	1	Total	O	P	0	1
			5	4	1		

- Molecule 3 is 2-[(9 {R})-8-oxa-7-boranidabicyclo[4.3.0]nona-1,3,5-trien-9-yl]ethanoic acid (CCD ID: A1JLW) (formula:  $C_9H_8BO_3$ ) (labeled as "Ligand of Interest" by depositor).



Mol	Chain	Residues	Atoms				ZeroOcc	AltConf
3	B	1	Total	B	C	O	0	1
			13	1	9	3		
3	A	1	Total	B	C	O	0	1
			13	1	9	3		

- Molecule 4 is GLYCINE (CCD ID: GLY) (formula:  $C_2H_5NO_2$ ).



Mol	Chain	Residues	Atoms				ZeroOcc	AltConf
4	B	1	Total	C	N	O	0	0
			5	2	1	2		

- Molecule 5 is water.

Mol	Chain	Residues	Atoms		ZeroOcc	AltConf
5	B	500	Total	O	0	2
			500	500		
5	A	458	Total	O	0	4
			459	459		

MolProbity failed to run properly - this section is therefore empty.

### 3 Data and refinement statistics

Property	Value	Source
Space group	P 21 21 21	Depositor
Cell constants a, b, c, $\alpha$ , $\beta$ , $\gamma$	43.38Å 83.55Å 208.32Å 90.00° 90.00° 90.00°	Depositor
Resolution (Å)	52.08 – 1.38 52.08 – 1.38	Depositor EDS
% Data completeness (in resolution range)	99.0 (52.08-1.38) 99.0 (52.08-1.38)	Depositor EDS
$R_{merge}$	(Not available)	Depositor
$R_{sym}$	(Not available)	Depositor
$\langle I/\sigma(I) \rangle$ <sup>1</sup>	1.70 (at 1.38Å)	Xtriage
Refinement program	PHENIX 1.20.1_4487	Depositor
R, $R_{free}$	0.165 , 0.185 0.166 , 0.186	Depositor DCC
$R_{free}$ test set	7569 reflections (4.83%)	wwPDB-VP
Wilson B-factor (Å <sup>2</sup> )	17.5	Xtriage
Anisotropy	0.193	Xtriage
Bulk solvent $k_{sol}$ (e/Å <sup>3</sup> ), $B_{sol}$ (Å <sup>2</sup> )	0.32 , 35.0	EDS
L-test for twinning <sup>2</sup>	$\langle  L  \rangle = 0.49$ , $\langle L^2 \rangle = 0.32$	Xtriage
Estimated twinning fraction	No twinning to report.	Xtriage
$F_o, F_c$ correlation	0.97	EDS
Total number of atoms	6842	wwPDB-VP
Average B, all atoms (Å <sup>2</sup> )	23.0	wwPDB-VP

Xtriage's analysis on translational NCS is as follows: *The largest off-origin peak in the Patterson function is 4.50% of the height of the origin peak. No significant pseudotranslation is detected.*

<sup>1</sup>Intensities estimated from amplitudes.

<sup>2</sup>Theoretical values of  $\langle |L| \rangle$ ,  $\langle L^2 \rangle$  for acentric reflections are 0.5, 0.333 respectively for untwinned datasets, and 0.375, 0.2 for perfectly twinned datasets.

## 4 Model quality [i](#)

### 4.1 Standard geometry [i](#)

MolProbity failed to run properly - this section is therefore empty.

### 4.2 Too-close contacts [i](#)

MolProbity failed to run properly - this section is therefore empty.

### 4.3 Torsion angles [i](#)

#### 4.3.1 Protein backbone [i](#)

MolProbity failed to run properly - this section is therefore empty.

#### 4.3.2 Protein sidechains [i](#)

MolProbity failed to run properly - this section is therefore empty.

#### 4.3.3 RNA [i](#)

MolProbity failed to run properly - this section is therefore empty.

### 4.4 Non-standard residues in protein, DNA, RNA chains [i](#)

There are no non-standard protein/DNA/RNA residues in this entry.

### 4.5 Carbohydrates [i](#)

There are no oligosaccharides in this entry.

### 4.6 Ligand geometry [i](#)

6 ligands are modelled in this entry.

In the following table, the Counts columns list the number of bonds (or angles) for which Mogul statistics could be retrieved, the number of bonds (or angles) that are observed in the model and the number of bonds (or angles) that are defined in the Chemical Component Dictionary. The Link column lists molecule types, if any, to which the group is linked. The Z score for a bond

length (or angle) is the number of standard deviations the observed value is removed from the expected value. A bond length (or angle) with  $|Z| > 2$  is considered an outlier worth inspection. RMSZ is the root-mean-square of all Z scores of the bond lengths (or angles).

Mol	Type	Chain	Res	Link	Bond lengths			Bond angles		
					Counts	RMSZ	$\# Z  > 2$	Counts	RMSZ	$\# Z  > 2$
3	A1JLW	A	402[B]	1	11,14,14	1.82	2 (18%)	16,19,19	3.16	6 (37%)
2	PO4	B	404[A]	-	4,4,4	0.91	0	6,6,6	0.44	0
4	GLY	B	403	-	4,4,4	1.15	1 (25%)	3,4,4	1.58	0
2	PO4	A	401[A]	-	4,4,4	0.89	0	6,6,6	0.37	0
3	A1JLW	B	402[B]	1	11,14,14	1.83	3 (27%)	16,19,19	3.28	7 (43%)
2	PO4	B	401	-	4,4,4	0.93	0	6,6,6	0.31	0

In the following table, the Chirals column lists the number of chiral outliers, the number of chiral centers analysed, the number of these observed in the model and the number defined in the Chemical Component Dictionary. Similar counts are reported in the Torsion and Rings columns. '-' means no outliers of that kind were identified.

Mol	Type	Chain	Res	Link	Chirals	Torsions	Rings
3	A1JLW	B	402[B]	1	-	1/4/13/13	0/2/2/2
3	A1JLW	A	402[B]	1	-	1/4/13/13	0/2/2/2
4	GLY	B	403	-	-	0/2/2/2	-

All (6) bond length outliers are listed below:

Mol	Chain	Res	Type	Atoms	Z	Observed(Å)	Ideal(Å)
3	A	402[B]	A1JLW	O01-C02	3.42	1.33	1.22
3	B	402[B]	A1JLW	O01-C02	3.33	1.33	1.22
3	B	402[B]	A1JLW	C05-C04	3.33	1.54	1.50
3	A	402[B]	A1JLW	C05-C04	3.20	1.54	1.50
4	B	403	GLY	OXT-C	-2.16	1.23	1.30
3	B	402[B]	A1JLW	C07-C06	2.06	1.43	1.38

All (13) bond angle outliers are listed below:

Mol	Chain	Res	Type	Atoms	Z	Observed(°)	Ideal(°)
3	B	402[B]	A1JLW	B11-O12-C04	8.01	115.17	107.19
3	B	402[B]	A1JLW	B11-C10-C05	7.90	112.11	105.27
3	A	402[B]	A1JLW	B11-O12-C04	7.69	114.85	107.19
3	A	402[B]	A1JLW	B11-C10-C05	7.52	111.78	105.27
3	A	402[B]	A1JLW	O15-C02-O01	-3.58	114.36	123.30
3	A	402[B]	A1JLW	O15-C02-C03	3.39	124.95	114.07
3	B	402[B]	A1JLW	O15-C02-C03	3.39	124.92	114.07
3	B	402[B]	A1JLW	O15-C02-O01	-3.33	115.00	123.30

*Continued on next page...*



*Continued from previous page...*

Mol	Chain	Res	Type	Atoms	Z	Observed(°)	Ideal(°)
3	B	402[B]	A1JLW	C07-C06-C05	-2.85	117.39	121.01
3	A	402[B]	A1JLW	C07-C06-C05	-2.64	117.66	121.01
3	A	402[B]	A1JLW	C08-C09-C10	-2.51	118.59	121.69
3	B	402[B]	A1JLW	C08-C09-C10	-2.42	118.69	121.69
3	B	402[B]	A1JLW	O12-C04-C05	2.21	106.00	102.28

There are no chirality outliers.

All (2) torsion outliers are listed below:

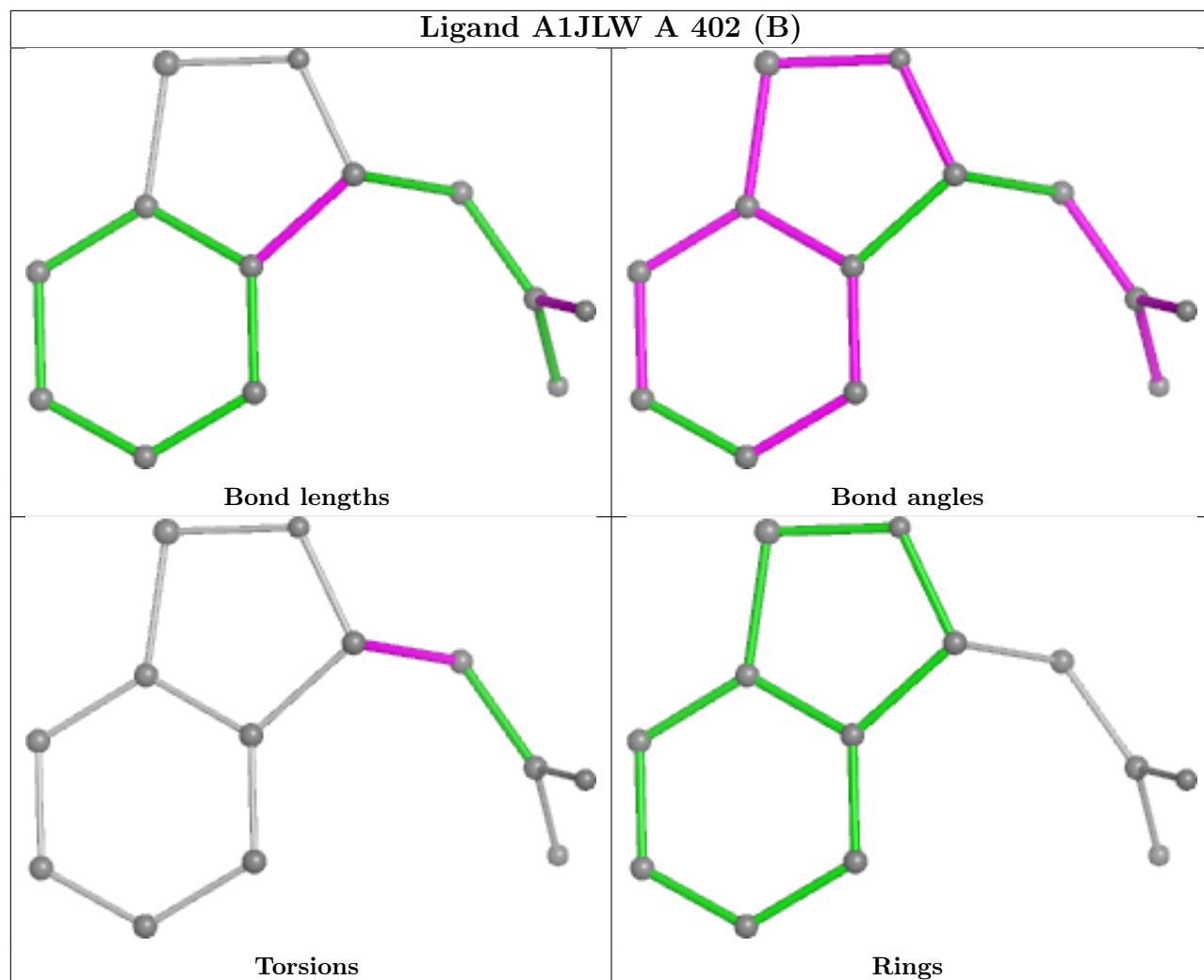
Mol	Chain	Res	Type	Atoms
3	B	402[B]	A1JLW	C02-C03-C04-O12
3	A	402[B]	A1JLW	C02-C03-C04-O12

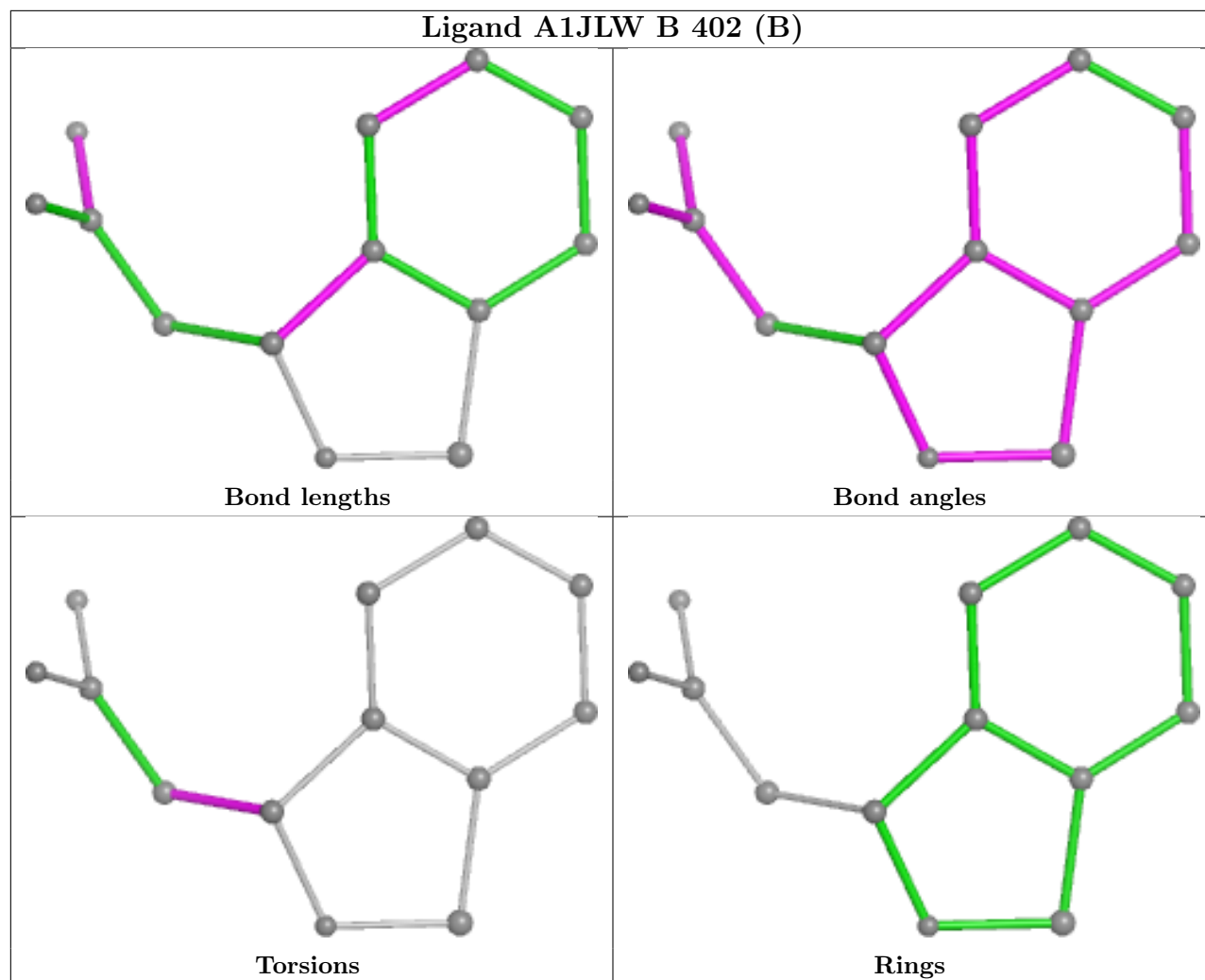
There are no ring outliers.

No monomer is involved in short contacts.

The following is a two-dimensional graphical depiction of Mogul quality analysis of bond lengths, bond angles, torsion angles, and ring geometry for all instances of the Ligand of Interest. In addition, ligands with molecular weight > 250 and outliers as shown on the validation Tables will also be included. For torsion angles, if less than 5% of the Mogul distribution of torsion angles is within 10 degrees of the torsion angle in question, then that torsion angle is considered an outlier. Any bond that is central to one or more torsion angles identified as an outlier by Mogul will be highlighted in the graph. For rings, the root-mean-square deviation (RMSD) between the ring in question and similar rings identified by Mogul is calculated over all ring torsion angles. If the average RMSD is greater than 60 degrees and the minimal RMSD between the ring in question and any Mogul-identified rings is also greater than 60 degrees, then that ring is considered an outlier. The outliers are highlighted in purple. The color gray indicates Mogul did not find sufficient equivalents in the CSD to analyse the geometry.

## Ligand A1JLW A 402 (B)





#### 4.7 Other polymers [i](#)

There are no such residues in this entry.

#### 4.8 Polymer linkage issues [i](#)

There are no chain breaks in this entry.

## 5 Fit of model and data [i](#)

### 5.1 Protein, DNA and RNA chains [i](#)

In the following table, the column labelled ‘#RSRZ> 2’ contains the number (and percentage) of RSRZ outliers, followed by percent RSRZ outliers for the chain as percentile scores relative to all X-ray entries and entries of similar resolution. The OWAB column contains the minimum, median, 95<sup>th</sup> percentile and maximum values of the occupancy-weighted average B-factor per residue. The column labelled ‘Q< 0.9’ lists the number of (and percentage) of residues with an average occupancy less than 0.9.

Mol	Chain	Analysed	<RSRZ>	#RSRZ>2	OWAB(Å <sup>2</sup> )	Q<0.9
1	A	358/360 (99%)	0.21	10 (2%) 55 60	10, 21, 40, 68	6 (1%)
1	B	359/360 (99%)	0.04	5 (1%) 73 78	6, 18, 33, 47	11 (3%)
All	All	717/720 (99%)	0.12	15 (2%) 63 68	6, 19, 37, 68	17 (2%)

All (15) RSRZ outliers are listed below:

Mol	Chain	Res	Type	RSRZ
1	A	357	ILE	3.7
1	A	301	ILE	3.6
1	A	2	THR	3.6
1	A	300	ALA	2.9
1	A	303	LYS	2.8
1	A	302	SER	2.8
1	B	1	ASN	2.7
1	A	269[A]	LEU	2.7
1	A	359	LYS	2.4
1	A	287[A]	ASN	2.3
1	B	98	ASN	2.1
1	B	359	LYS	2.1
1	B	248	ILE	2.1
1	B	244	TYR	2.0
1	A	3	PRO	2.0

### 5.2 Non-standard residues in protein, DNA, RNA chains [i](#)

There are no non-standard protein/DNA/RNA residues in this entry.

### 5.3 Carbohydrates [i](#)

There are no oligosaccharides in this entry.

## 5.4 Ligands [i](#)

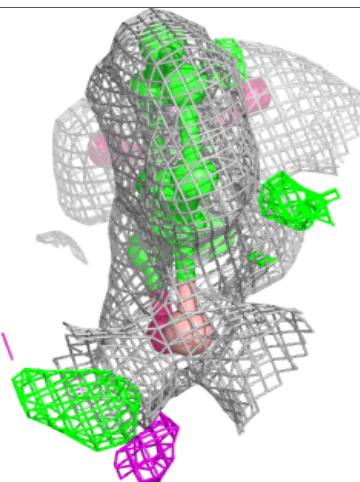
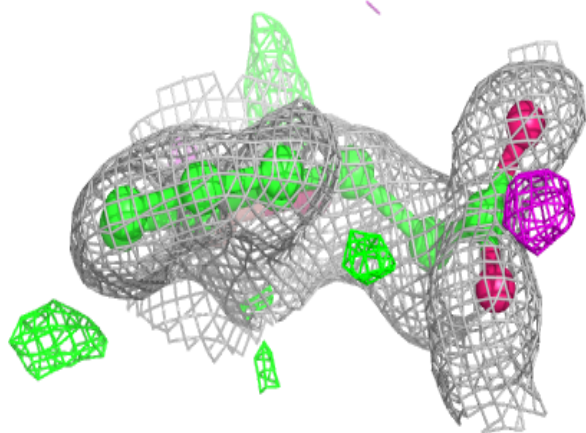
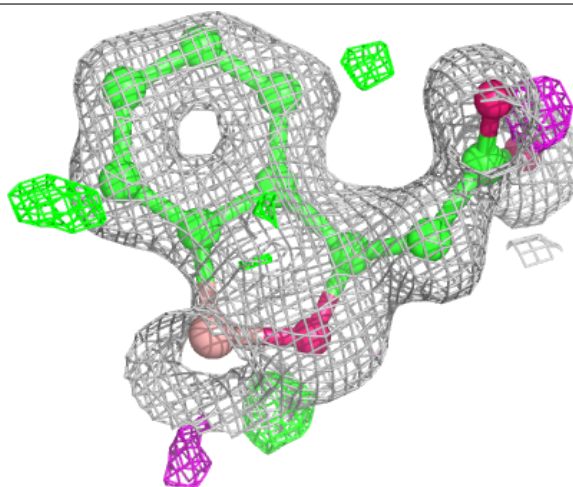
In the following table, the Atoms column lists the number of modelled atoms in the group and the number defined in the chemical component dictionary. The B-factors column lists the minimum, median, 95<sup>th</sup> percentile and maximum values of B factors of atoms in the group. The column labelled 'Q< 0.9' lists the number of atoms with occupancy less than 0.9.

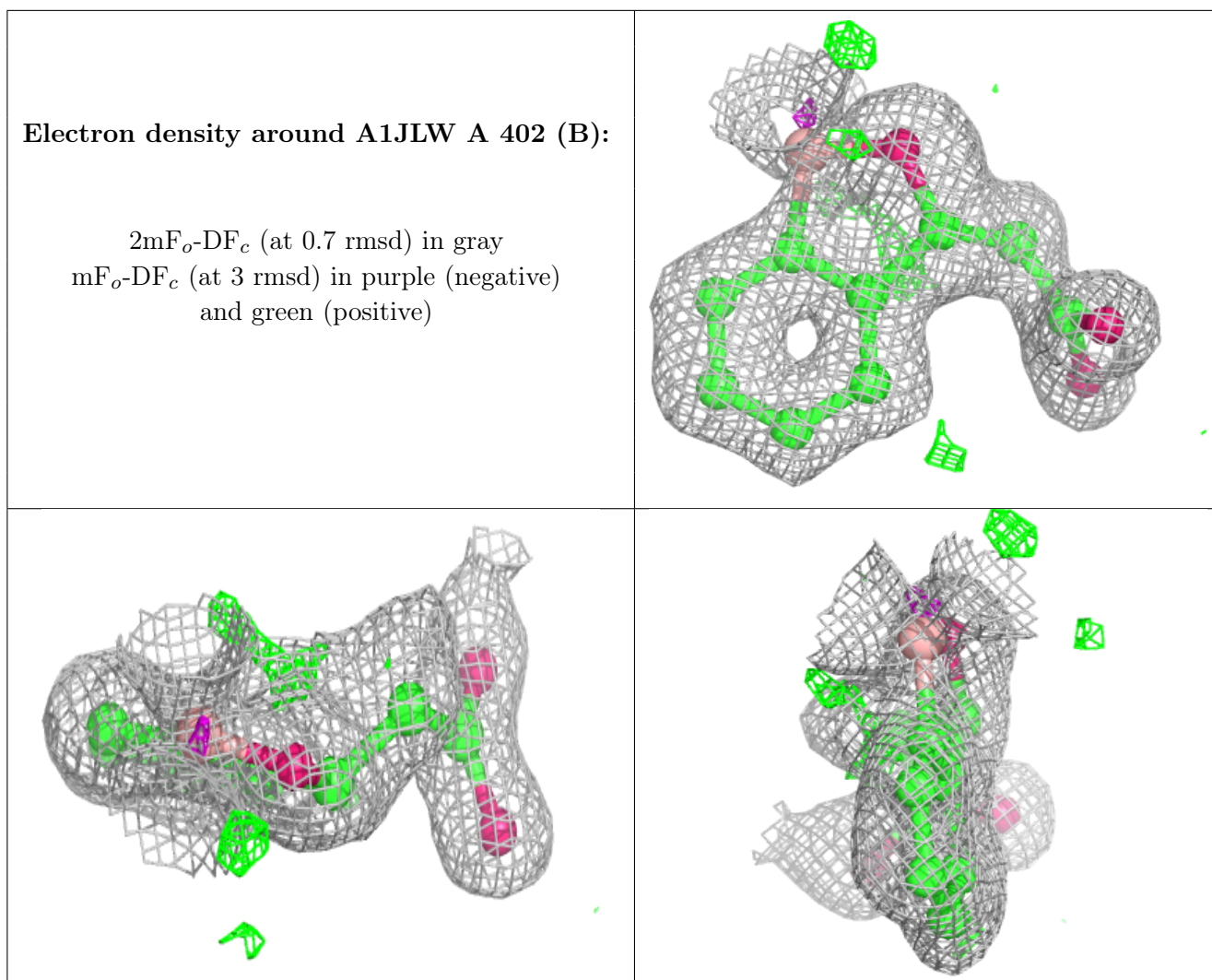
Mol	Type	Chain	Res	Atoms	RSCC	RSR	B-factors( $\text{\AA}^2$ )	Q<0.9
2	PO4	B	404[A]	5/5	0.78	0.18	18,18,21,21	5
2	PO4	A	401[A]	5/5	0.82	0.17	17,18,19,20	5
4	GLY	B	403	5/5	0.83	0.17	45,50,72,74	0
3	A1JLW	B	402[B]	13/13	0.89	0.12	17,19,23,23	13
2	PO4	B	401	5/5	0.93	0.11	20,21,24,28	5
3	A1JLW	A	402[B]	13/13	0.94	0.08	15,16,19,19	13

The following is a graphical depiction of the model fit to experimental electron density of all instances of the Ligand of Interest. In addition, ligands with molecular weight > 250 and outliers as shown on the geometry validation Tables will also be included. Each fit is shown from different orientation to approximate a three-dimensional view.

### Electron density around A1JLW B 402 (B):

2mF<sub>o</sub>-DF<sub>c</sub> (at 0.7 rmsd) in gray  
 mF<sub>o</sub>-DF<sub>c</sub> (at 3 rmsd) in purple (negative)  
 and green (positive)





## 5.5 Other polymers ⓘ

There are no such residues in this entry.