



Full wwPDB EM Validation Report ⓘ

Oct 6, 2024 – 07:59 PM EDT

PDB ID : 9B39
EMDB ID : EMD-44132
Title : Kainate receptor GluK2 in complex with agonist glutamate with asymmetric ligand-binding domain layer
Authors : Nadezhdin, K.D.; Gangwar, S.P.; Sobolevsky, A.I.
Deposited on : 2024-03-18
Resolution : 3.84 Å(reported)

This is a Full wwPDB EM Validation Report for a publicly released PDB entry.

We welcome your comments at validation@mail.wwpdb.org

A user guide is available at

<https://www.wwpdb.org/validation/2017/EMValidationReportHelp>

with specific help available everywhere you see the ⓘ symbol.

The types of validation reports are described at

<http://www.wwpdb.org/validation/2017/FAQs#types>.

The following versions of software and data (see [references ⓘ](#)) were used in the production of this report:

EMDB validation analysis : 0.0.1.dev113
Mogul : 2022.3.0, CSD as543be (2022)
MolProbity : 4.02b-467
Percentile statistics : 20231227.v01 (using entries in the PDB archive December 27th 2023)
MapQ : 1.9.13
Ideal geometry (proteins) : Engh & Huber (2001)
Ideal geometry (DNA, RNA) : Parkinson et al. (1996)
Validation Pipeline (wwPDB-VP) : 2.39

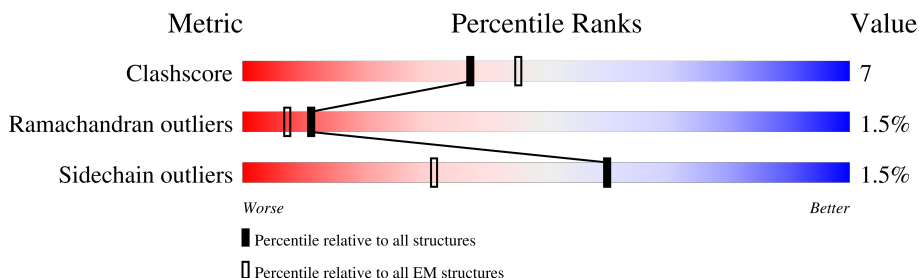
1 Overall quality at a glance i

The following experimental techniques were used to determine the structure:

ELECTRON MICROSCOPY

The reported resolution of this entry is 3.84 Å.

Percentile scores (ranging between 0-100) for global validation metrics of the entry are shown in the following graphic. The table shows the number of entries on which the scores are based.



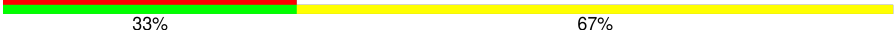

Metric	Whole archive (#Entries)	EM structures (#Entries)
Clashscore	210492	15764
Ramachandran outliers	207382	16835
Sidechain outliers	206894	16415

The table below summarises the geometric issues observed across the polymeric chains and their fit to the map. The red, orange, yellow and green segments of the bar indicate the fraction of residues that contain outliers for ≥ 3 , 2, 1 and 0 types of geometric quality criteria respectively. A grey segment represents the fraction of residues that are not modelled. The numeric value for each fraction is indicated below the corresponding segment, with a dot representing fractions $\leq 5\%$. The upper red bar (where present) indicates the fraction of residues that have poor fit to the EM map (all-atom inclusion $< 40\%$). The numeric value is given above the bar.

Mol	Chain	Length	Quality of chain
1	A	912	
1	B	912	
1	C	912	
1	D	912	
2	E	5	
2	F	5	
2	J	5	
2	K	5	

Continued on next page...

Continued from previous page...

Mol	Chain	Length	Quality of chain
2	L	5	 20% 80%
3	G	3	 33% 67%
3	M	3	 100%
3	N	3	 33% 33% 67%
4	H	2	 50% 50%
4	I	2	 100%

2 Entry composition i

There are 6 unique types of molecules in this entry. The entry contains 27522 atoms, of which 0 are hydrogens and 0 are deuteriums.

In the tables below, the AltConf column contains the number of residues with at least one atom in alternate conformation and the Trace column contains the number of residues modelled with at most 2 atoms.

- Molecule 1 is a protein called Glutamate receptor ionotropic, kainate 2.

Mol	Chain	Residues	Atoms					AltConf	Trace
			Total	C	N	O	S		
1	A	842	6684	4283	1117	1244	40	2	0
1	B	842	6680	4280	1117	1243	40	1	0
1	C	842	6680	4280	1117	1243	40	1	0
1	D	842	6680	4280	1117	1243	40	1	0

There are 24 discrepancies between the modelled and reference sequences:

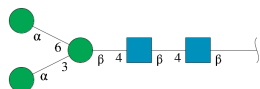
Chain	Residue	Modelled	Actual	Comment	Reference
A	567	VAL	ILE	conflict	UNP P42260
A	571	CYS	TYR	conflict	UNP P42260
A	909	LEU	-	expression tag	UNP P42260
A	910	VAL	-	expression tag	UNP P42260
A	911	PRO	-	expression tag	UNP P42260
A	912	ARG	-	expression tag	UNP P42260
B	567	VAL	ILE	conflict	UNP P42260
B	571	CYS	TYR	conflict	UNP P42260
B	909	LEU	-	expression tag	UNP P42260
B	910	VAL	-	expression tag	UNP P42260
B	911	PRO	-	expression tag	UNP P42260
B	912	ARG	-	expression tag	UNP P42260
C	567	VAL	ILE	conflict	UNP P42260
C	571	CYS	TYR	conflict	UNP P42260
C	909	LEU	-	expression tag	UNP P42260
C	910	VAL	-	expression tag	UNP P42260
C	911	PRO	-	expression tag	UNP P42260
C	912	ARG	-	expression tag	UNP P42260
D	567	VAL	ILE	conflict	UNP P42260
D	571	CYS	TYR	conflict	UNP P42260
D	909	LEU	-	expression tag	UNP P42260
D	910	VAL	-	expression tag	UNP P42260

Continued on next page...

Continued from previous page...

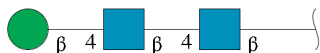
Chain	Residue	Modelled	Actual	Comment	Reference
D	911	PRO	-	expression tag	UNP P42260
D	912	ARG	-	expression tag	UNP P42260

- Molecule 2 is an oligosaccharide called alpha-D-mannopyranose-(1-3)-[alpha-D-mannopyranose-(1-6)]beta-D-mannopyranose-(1-4)-2-acetamido-2-deoxy-beta-D-glucopyranose-(1-4)-2-acetamido-2-deoxy-beta-D-glucopyranose.



Mol	Chain	Residues	Atoms				AltConf	Trace
			Total	C	N	O		
2	E	5	61	34	2	25	0	0
2	F	5	61	34	2	25	0	0
2	J	5	61	34	2	25	0	0
2	K	5	61	34	2	25	0	0
2	L	5	61	34	2	25	0	0

- Molecule 3 is an oligosaccharide called beta-D-mannopyranose-(1-4)-2-acetamido-2-deoxy-beta-D-glucopyranose-(1-4)-2-acetamido-2-deoxy-beta-D-glucopyranose.



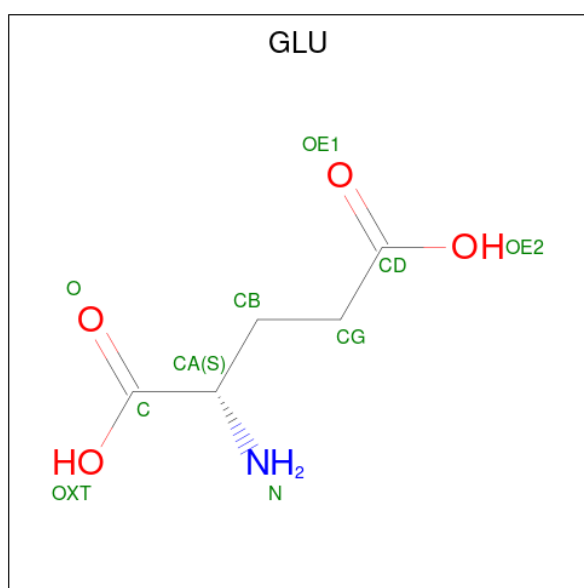
Mol	Chain	Residues	Atoms				AltConf	Trace
			Total	C	N	O		
3	G	3	39	22	2	15	0	0
3	M	3	39	22	2	15	0	0
3	N	3	39	22	2	15	0	0

- Molecule 4 is an oligosaccharide called 2-acetamido-2-deoxy-beta-D-glucopyranose-(1-4)-2-acetamido-2-deoxy-beta-D-glucopyranose.



Mol	Chain	Residues	Atoms				AltConf	Trace
			Total	C	N	O		
4	H	2	28	16	2	10	0	0
4	I	2	28	16	2	10	0	0

- Molecule 5 is GLUTAMIC ACID (three-letter code: GLU) (formula: C₅H₉NO₄).



Mol	Chain	Residues	Atoms				AltConf
			Total	C	N	O	
5	A	1	10	5	1	4	0
5	B	1	10	5	1	4	0
5	C	1	10	5	1	4	0
5	D	1	10	5	1	4	0

- Molecule 6 is 2-acetamido-2-deoxy-beta-D-glucopyranose (three-letter code: NAG) (formula: C₈H₁₅NO₆).



Mol	Chain	Residues	Atoms				AltConf
			Total	C	N	O	
6	A	1	Total	C	N	O	0
			14	8	1	5	
6	A	1	Total	C	N	O	0
			14	8	1	5	
6	A	1	Total	C	N	O	0
			14	8	1	5	
6	A	1	Total	C	N	O	0
			14	8	1	5	
6	B	1	Total	C	N	O	0
			14	8	1	5	
6	B	1	Total	C	N	O	0
			14	8	1	5	
6	B	1	Total	C	N	O	0
			14	8	1	5	
6	B	1	Total	C	N	O	0
			14	8	1	5	
6	C	1	Total	C	N	O	0
			14	8	1	5	
6	C	1	Total	C	N	O	0
			14	8	1	5	
6	C	1	Total	C	N	O	0
			14	8	1	5	
6	C	1	Total	C	N	O	0
			14	8	1	5	

Continued on next page...

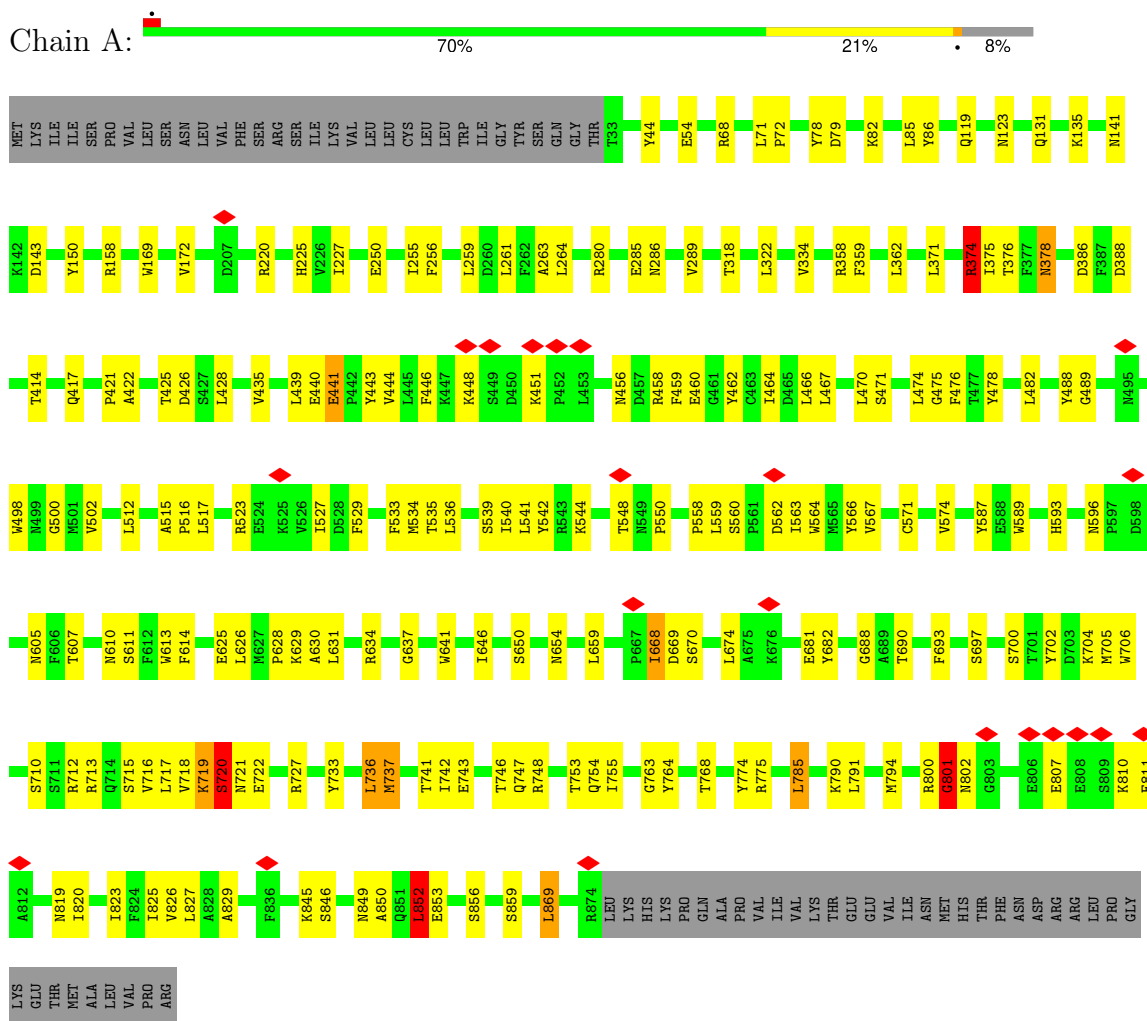
Continued from previous page...

Mol	Chain	Residues	Atoms				AltConf
			Total	C	N	O	
6	C	1	Total 14	8	1	5	0
6	D	1	Total 14	8	1	5	0
6	D	1	Total 14	8	1	5	0
6	D	1	Total 14	8	1	5	0
6	D	1	Total 14	8	1	5	0
6	D	1	Total 14	8	1	5	0

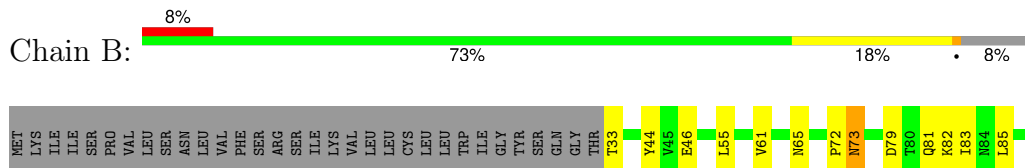
3 Residue-property plots

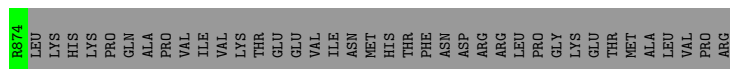
These plots are drawn for all protein, RNA, DNA and oligosaccharide chains in the entry. The first graphic for a chain summarises the proportions of the various outlier classes displayed in the second graphic. The second graphic shows the sequence view annotated by issues in geometry and atom inclusion in map density. Residues are color-coded according to the number of geometric quality criteria for which they contain at least one outlier: green = 0, yellow = 1, orange = 2 and red = 3 or more. A red diamond above a residue indicates a poor fit to the EM map for this residue (all-atom inclusion < 40%). Stretches of 2 or more consecutive residues without any outlier are shown as a green connector. Residues present in the sample, but not in the model, are shown in grey.

- Molecule 1: Glutamate receptor ionotropic, kainate 2

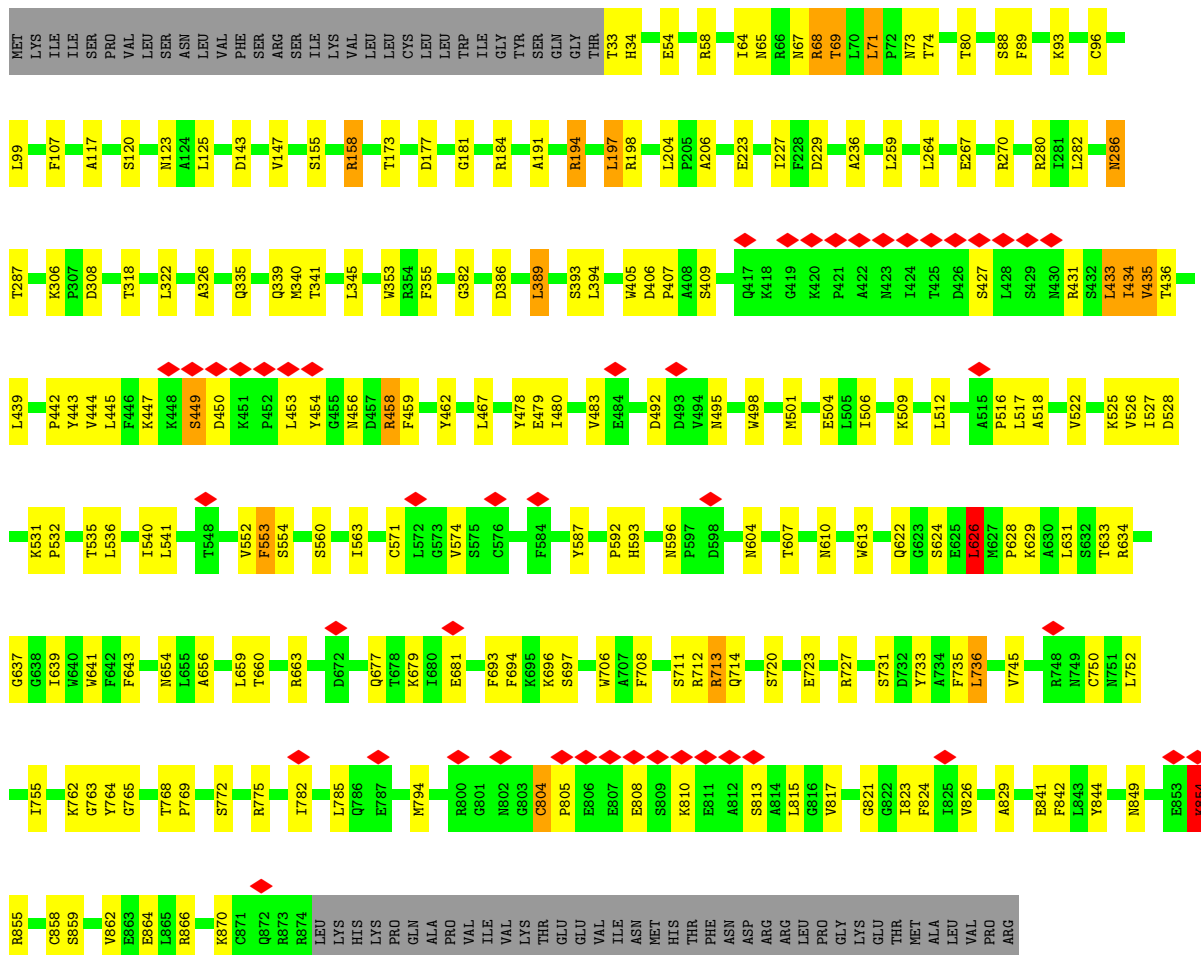


- Molecule 1: Glutamate receptor ionotropic, kainate 2

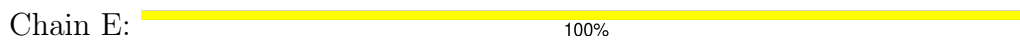




- Molecule 1: Glutamate receptor ionotropic, kainate 2



- Molecule 2: alpha-D-mannopyranose-(1-3)-[alpha-D-mannopyranose-(1-6)]beta-D-mannopyranose-(1-4)-2-acetamido-2-deoxy-beta-D-glucopyranose-(1-4)-2-acetamido-2-deoxy-beta-D-glucopyranose

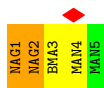
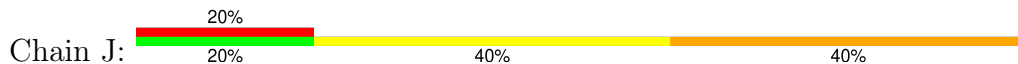


- Molecule 2: alpha-D-mannopyranose-(1-3)-[alpha-D-mannopyranose-(1-6)]beta-D-mannopyranose-(1-4)-2-acetamido-2-deoxy-beta-D-glucopyranose-(1-4)-2-acetamido-2-deoxy-beta-D-glucopyranose

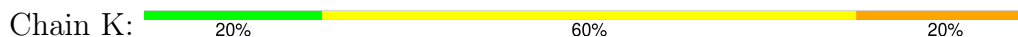




- Molecule 2: alpha-D-mannopyranose-(1-3)-[alpha-D-mannopyranose-(1-6)]beta-D-mannopyranose-(1-4)-2-acetamido-2-deoxy-beta-D-glucopyranose-(1-4)-2-acetamido-2-deoxy-beta-D-glucopyranose



- Molecule 2: alpha-D-mannopyranose-(1-3)-[alpha-D-mannopyranose-(1-6)]beta-D-mannopyranose-(1-4)-2-acetamido-2-deoxy-beta-D-glucopyranose-(1-4)-2-acetamido-2-deoxy-beta-D-glucopyranose



- Molecule 2: alpha-D-mannopyranose-(1-3)-[alpha-D-mannopyranose-(1-6)]beta-D-mannopyranose-(1-4)-2-acetamido-2-deoxy-beta-D-glucopyranose-(1-4)-2-acetamido-2-deoxy-beta-D-glucopyranose



- Molecule 3: beta-D-mannopyranose-(1-4)-2-acetamido-2-deoxy-beta-D-glucopyranose-(1-4)-2-acetamido-2-deoxy-beta-D-glucopyranose



- Molecule 3: beta-D-mannopyranose-(1-4)-2-acetamido-2-deoxy-beta-D-glucopyranose-(1-4)-2-acetamido-2-deoxy-beta-D-glucopyranose



- Molecule 3: beta-D-mannopyranose-(1-4)-2-acetamido-2-deoxy-beta-D-glucopyranose-(1-4)-2-acetamido-2-deoxy-beta-D-glucopyranose





- Molecule 4: 2-acetamido-2-deoxy-beta-D-glucopyranose-(1-4)-2-acetamido-2-deoxy-beta-D-glucopyranose

Chain H:  50% 50%



- Molecule 4: 2-acetamido-2-deoxy-beta-D-glucopyranose-(1-4)-2-acetamido-2-deoxy-beta-D-glucopyranose

Chain I:  100%



4 Experimental information

Property	Value	Source
EM reconstruction method	SINGLE PARTICLE	Depositor
Imposed symmetry	POINT, C1	Depositor
Number of particles used	72375	Depositor
Resolution determination method	FSC 0.143 CUT-OFF	Depositor
CTF correction method	NONE	Depositor
Microscope	TFS KRIOS	Depositor
Voltage (kV)	300	Depositor
Electron dose ($e^-/\text{\AA}^2$)	58	Depositor
Minimum defocus (nm)	1000	Depositor
Maximum defocus (nm)	2000	Depositor
Magnification	Not provided	
Image detector	GATAN K3 (6k x 4k)	Depositor
Maximum map value	0.628	Depositor
Minimum map value	-0.282	Depositor
Average map value	0.002	Depositor
Map value standard deviation	0.019	Depositor
Recommended contour level	0.0835	Depositor
Map size (\AA)	345.2672, 345.2672, 345.2672	wwPDB
Map dimensions	256, 256, 256	wwPDB
Map angles ($^\circ$)	90.0, 90.0, 90.0	wwPDB
Pixel spacing (\AA)	1.3487, 1.3487, 1.3487	Depositor

5 Model quality [i](#)

5.1 Standard geometry [i](#)

Bond lengths and bond angles in the following residue types are not validated in this section: MAN, NAG, BMA

The Z score for a bond length (or angle) is the number of standard deviations the observed value is removed from the expected value. A bond length (or angle) with $|Z| > 5$ is considered an outlier worth inspection. RMSZ is the root-mean-square of all Z scores of the bond lengths (or angles).

Mol	Chain	Bond lengths		Bond angles	
		RMSZ	# Z >5	RMSZ	# Z >5
1	A	0.41	0/6840	0.73	7/9258 (0.1%)
1	B	0.39	0/6833	0.68	6/9248 (0.1%)
1	C	0.41	0/6833	0.69	3/9248 (0.0%)
1	D	0.41	0/6833	0.75	6/9248 (0.1%)
All	All	0.41	0/27339	0.71	22/37002 (0.1%)

Chiral center outliers are detected by calculating the chiral volume of a chiral center and verifying if the center is modelled as a planar moiety or with the opposite hand. A planarity outlier is detected by checking planarity of atoms in a peptide group, atoms in a mainchain group or atoms of a sidechain that are expected to be planar.

Mol	Chain	#Chirality outliers	#Planarity outliers
1	A	0	17
1	B	0	14
1	C	0	11
1	D	0	12
All	All	0	54

There are no bond length outliers.

All (22) bond angle outliers are listed below:

Mol	Chain	Res	Type	Atoms	Z	Observed(°)	Ideal(°)
1	D	71	LEU	CA-CB-CG	10.55	139.58	115.30
1	D	626	LEU	CA-CB-CG	9.30	136.69	115.30
1	A	869	LEU	CA-CB-CG	8.82	135.60	115.30
1	B	626	LEU	CA-CB-CG	8.46	134.76	115.30
1	B	445	LEU	CA-CB-CG	8.12	133.98	115.30
1	D	736	LEU	CA-CB-CG	6.71	130.73	115.30
1	D	467	LEU	CA-CB-CG	6.51	130.28	115.30
1	D	439	LEU	CA-CB-CG	6.10	129.33	115.30

Continued on next page...

Continued from previous page...

Mol	Chain	Res	Type	Atoms	Z	Observed(°)	Ideal(°)
1	C	568	LEU	CA-CB-CG	6.07	129.25	115.30
1	B	767	GLY	C-N-CA	6.01	136.72	121.70
1	C	445	LEU	CA-CB-CG	5.93	128.95	115.30
1	A	374	ARG	C-N-CA	5.83	136.29	121.70
1	B	55	LEU	CA-CB-CG	5.65	128.29	115.30
1	C	674	LEU	CA-CB-CG	5.49	127.93	115.30
1	A	736	LEU	CA-CB-CG	5.48	127.89	115.30
1	B	439	LEU	CA-CB-CG	5.37	127.64	115.30
1	A	852	LEU	CA-CB-CG	5.30	127.48	115.30
1	A	785	LEU	CA-CB-CG	5.28	127.45	115.30
1	A	852	LEU	CB-CA-C	5.19	120.06	110.20
1	A	674	LEU	CA-CB-CG	5.15	127.14	115.30
1	B	674	LEU	CA-CB-CG	5.11	127.05	115.30
1	D	227	ILE	CG1-CB-CG2	-5.09	100.20	111.40

There are no chirality outliers.

All (54) planarity outliers are listed below:

Mol	Chain	Res	Type	Group
1	A	263	ALA	Peptide
1	A	374	ARG	Peptide
1	A	378	ASN	Peptide
1	A	414	THR	Peptide
1	A	417	GLN	Peptide
1	A	421	PRO	Peptide
1	A	441	GLU	Peptide
1	A	451	LYS	Peptide
1	A	544	LYS	Peptide
1	A	717	LEU	Peptide
1	A	718	VAL	Peptide
1	A	719	LYS	Peptide
1	A	720	SER	Peptide
1	A	800	ARG	Peptide
1	A	801	GLY	Peptide
1	A	85	LEU	Peptide
1	A	852	LEU	Peptide
1	B	195	TYR	Peptide
1	B	353	TRP	Peptide
1	B	420	LYS	Peptide
1	B	451	LYS	Peptide
1	B	489	GLY	Peptide
1	B	493	ASP	Peptide

Continued on next page...

Continued from previous page...

Mol	Chain	Res	Type	Group
1	B	544	LYS	Peptide
1	B	587	TYR	Peptide
1	B	597	PRO	Peptide
1	B	666	SER	Peptide
1	B	667	PRO	Peptide
1	B	668	ILE	Peptide
1	B	72	PRO	Peptide
1	B	869	LEU	Peptide
1	C	191	ALA	Peptide
1	C	194	ARG	Peptide
1	C	353	TRP	Peptide
1	C	441	GLU	Peptide
1	C	444	VAL	Peptide
1	C	45	VAL	Peptide
1	C	487	LYS	Peptide
1	C	544	LYS	Peptide
1	C	545	PRO	Peptide
1	C	601	VAL	Peptide
1	C	871	CYS	Peptide
1	D	107	PHE	Peptide
1	D	197	LEU	Peptide
1	D	206	ALA	Peptide
1	D	339	GLN	Peptide
1	D	353	TRP	Peptide
1	D	449	SER	Peptide
1	D	498	TRP	Peptide
1	D	68	ARG	Peptide
1	D	712	ARG	Peptide
1	D	731	SER	Peptide
1	D	804	CYS	Peptide
1	D	854	LYS	Peptide

5.2 Too-close contacts [i](#)

In the following table, the Non-H and H(model) columns list the number of non-hydrogen atoms and hydrogen atoms in the chain respectively. The H(added) column lists the number of hydrogen atoms added and optimized by MolProbity. The Clashes column lists the number of clashes within the asymmetric unit, whereas Symm-Clashes lists symmetry-related clashes.

Mol	Chain	Non-H	H(model)	H(added)	Clashes	Symm-Clashes
1	A	6684	0	6664	116	0
1	B	6680	0	6660	93	0

Continued on next page...

Continued from previous page...

Mol	Chain	Non-H	H(model)	H(added)	Clashes	Symm-Clashes
1	C	6680	0	6657	92	0
1	D	6680	0	6659	117	0
2	E	61	0	52	0	0
2	F	61	0	52	1	0
2	J	61	0	52	1	0
2	K	61	0	52	1	0
2	L	61	0	52	0	0
3	G	39	0	34	0	0
3	M	39	0	34	0	0
3	N	39	0	34	0	0
4	H	28	0	25	0	0
4	I	28	0	25	1	0
5	A	10	0	5	3	0
5	B	10	0	5	2	0
5	C	10	0	5	1	0
5	D	10	0	5	0	0
6	A	56	0	52	1	0
6	B	70	0	65	0	0
6	C	84	0	78	0	0
6	D	70	0	65	0	0
All	All	27522	0	27332	399	0

The all-atom clashscore is defined as the number of clashes found per 1000 atoms (including hydrogen atoms). The all-atom clashscore for this structure is 7.

All (399) close contacts within the same asymmetric unit are listed below, sorted by their clash magnitude.

Atom-1	Atom-2	Interatomic distance (Å)	Clash overlap (Å)
1:A:610:ASN:HB3	1:A:626:LEU:HD21	1.69	0.74
1:D:431:ARG:HB3	1:D:433:LEU:HG	1.71	0.71
1:C:583:ARG:HH12	1:C:604:ASN:HB3	1.56	0.70
1:C:747:GLN:HB3	1:C:801:GLY:HA3	1.76	0.68
1:C:443:TYR:HA	1:C:462:TYR:HB3	1.75	0.68
1:D:435:VAL:HG22	1:D:512:LEU:HB2	1.76	0.68
1:D:259:LEU:HB2	1:D:318:THR:HG21	1.75	0.67
1:B:591:ASN:ND2	1:B:598:ASP:O	2.29	0.65
1:B:621:GLN:HA	1:C:622:GLN:HE22	1.61	0.65
1:C:345:LEU:HD11	1:C:353:TRP:HB2	1.78	0.65
1:C:289:VAL:HG13	1:C:371:LEU:HD22	1.79	0.65
1:C:125:LEU:HD12	1:C:345:LEU:HD12	1.80	0.64
1:A:119:GLN:OE1	1:A:135:LYS:NZ	2.30	0.64

Continued on next page...

Continued from previous page...

Atom-1	Atom-2	Interatomic distance (Å)	Clash overlap (Å)
1:D:492:ASP:HB3	1:D:495:ASN:HB2	1.78	0.63
1:C:621:GLN:HA	1:D:622:GLN:HE22	1.64	0.63
1:C:44:TYR:HB2	1:C:82:LYS:HB3	1.81	0.63
1:C:467:LEU:HD13	1:C:514:VAL:HG21	1.80	0.63
1:A:593:HIS:HB3	1:A:596:ASN:HB3	1.81	0.62
1:B:138:VAL:HB	1:B:141:ASN:HB2	1.80	0.62
1:C:181:GLY:HA2	1:C:184:ARG:HE	1.64	0.62
1:B:443:TYR:HA	1:B:462:TYR:HB3	1.81	0.62
1:D:123:ASN:ND2	1:D:143:ASP:OD1	2.32	0.62
1:A:690:THR:HG21	1:A:736:LEU:HB3	1.80	0.62
1:A:68:ARG:HB3	1:A:72:PRO:HA	1.82	0.62
1:A:558:PRO:O	1:A:654:ASN:ND2	2.33	0.61
1:A:498:TRP:HB3	1:A:502:VAL:HG23	1.81	0.61
1:D:33:THR:N	1:D:73:ASN:O	2.32	0.61
1:D:854:LYS:HE3	1:D:858:CYS:HB3	1.82	0.61
1:D:528:ASP:O	1:D:768:THR:OG1	2.18	0.61
1:D:541:LEU:HB3	1:D:735:PHE:HB3	1.80	0.61
1:A:535[A]:THR:HA	1:A:763:GLY:HA2	1.83	0.61
1:A:535[B]:THR:HA	1:A:763:GLY:HA2	1.83	0.61
1:A:631:LEU:HD21	1:B:609:LEU:HD11	1.82	0.60
1:C:386:ASP:HA	1:C:407:PRO:HG2	1.83	0.60
1:D:236:ALA:HB2	1:D:264:LEU:HD11	1.84	0.60
1:D:535:THR:HA	1:D:763:GLY:HA2	1.82	0.60
1:B:296:TRP:HE1	1:B:300:ARG:HE	1.50	0.60
1:C:531:LYS:H	1:C:779:THR:HG22	1.66	0.60
1:D:531:LYS:HB2	1:D:782:ILE:HD11	1.84	0.59
1:A:440:GLU:N	1:A:444:VAL:O	2.31	0.59
1:A:737:MET:SD	1:A:741:THR:OG1	2.58	0.59
1:D:434:ILE:HA	1:D:479:GLU:HB3	1.84	0.59
1:A:715:SER:O	1:A:727:ARG:NH1	2.36	0.58
1:C:794:MET:HA	1:C:797:LYS:HB3	1.86	0.58
1:A:746:THR:HG22	1:A:753:THR:HA	1.83	0.58
1:B:740:THR:O	1:B:799:TRP:NE1	2.36	0.58
1:A:489:GLY:H	1:A:500:GLY:HA3	1.69	0.58
1:D:769:PRO:HD2	1:D:772:SER:HB2	1.86	0.58
1:D:720:SER:HB3	1:D:723:GLU:HG2	1.85	0.57
1:A:374:ARG:NH2	1:A:386:ASP:O	2.37	0.57
1:C:81:GLN:HG2	1:C:98:GLN:HE21	1.69	0.57
1:A:542:TYR:HB3	1:A:755:ILE:HG13	1.86	0.57
1:D:341:THR:H	1:D:355:PHE:HZ	1.52	0.57
1:D:772:SER:HB3	1:D:775:ARG:HB2	1.85	0.57

Continued on next page...

Continued from previous page...

Atom-1	Atom-2	Interatomic distance (Å)	Clash overlap (Å)
1:B:591:ASN:ND2	1:B:599:SER:O	2.38	0.57
1:A:54:GLU:OE1	1:A:82:LYS:NZ	2.39	0.56
1:B:81:GLN:NE2	1:B:94:LYS:O	2.38	0.56
1:D:184:ARG:NH2	1:D:229:ASP:OD2	2.39	0.56
1:D:442:PRO:HA	1:D:445:LEU:HD23	1.88	0.56
1:D:504:GLU:HA	1:D:509:LYS:HE3	1.87	0.56
1:D:694:PHE:HB3	1:D:706:TRP:HB2	1.87	0.56
1:C:523:ARG:NH2	5:C:1001:GLU:OXT	2.39	0.56
1:D:280:ARG:HG2	1:D:282:LEU:H	1.69	0.56
1:A:428:LEU:HD12	1:A:474:LEU:HD13	1.88	0.56
1:C:184:ARG:NH2	1:C:229:ASP:OD2	2.39	0.56
1:C:544:LYS:HB3	1:C:753:THR:HB	1.87	0.56
1:C:716:VAL:HA	1:C:727:ARG:HH22	1.71	0.56
1:D:560:SER:HB3	1:D:563:ILE:HG12	1.88	0.55
1:D:663:ARG:NH1	1:D:813:SER:O	2.39	0.55
1:B:154:SER:O	1:B:158:ARG:NH2	2.40	0.55
1:A:706:TRP:O	1:A:710:SER:N	2.36	0.55
1:A:250:GLU:OE2	1:A:774:TYR:OH	2.24	0.55
1:C:536:LEU:HB3	1:C:762:LYS:HB2	1.89	0.55
1:D:96:CYS:HA	1:D:99:LEU:HB2	1.88	0.55
1:D:181:GLY:HA2	1:D:184:ARG:HE	1.69	0.55
1:A:716:VAL:HA	1:A:727:ARG:HH12	1.72	0.54
1:C:430:ASN:O	1:C:431:ARG:NH1	2.39	0.54
1:C:747:GLN:NE2	1:C:801:GLY:O	2.40	0.54
1:D:858:CYS:SG	1:D:859:SER:N	2.80	0.54
1:D:593:HIS:HB3	1:D:596:ASN:HB3	1.88	0.54
1:D:713:ARG:HG3	1:D:714:GLN:H	1.73	0.54
1:A:488:TYR:O	1:A:523:ARG:NH2	2.41	0.54
1:B:79:ASP:O	1:B:98:GLN:NE2	2.41	0.54
1:C:453:LEU:HB3	1:C:458:ARG:HG3	1.89	0.54
1:D:750:CYS:N	1:D:804:CYS:SG	2.81	0.54
1:A:681:GLU:HB2	1:A:733:TYR:HA	1.89	0.54
1:B:586:PRO:HB2	1:C:845:LYS:HD2	1.90	0.53
1:A:541:LEU:HD13	1:A:742:ILE:HG23	1.90	0.53
1:A:517:LEU:HD12	1:A:529:PHE:HE1	1.73	0.53
1:C:788:GLU:HG3	1:C:790:LYS:HG2	1.89	0.53
1:A:849:ASN:HD22	1:A:852:LEU:HD22	1.73	0.53
1:D:386:ASP:HA	1:D:407:PRO:HG2	1.91	0.53
1:A:646:ILE:O	1:A:650:SER:N	2.39	0.53
1:B:528:ASP:O	1:B:768:THR:OG1	2.27	0.53
1:C:343:SER:HB2	1:C:354:ARG:HH22	1.74	0.53

Continued on next page...

Continued from previous page...

Atom-1	Atom-2	Interatomic distance (Å)	Clash overlap (Å)
1:D:147:VAL:HG12	1:D:382:GLY:HA3	1.89	0.53
1:A:614:PHE:HB2	1:A:626:LEU:HD22	1.91	0.53
1:A:587:TYR:HB2	1:A:630:ALA:HB2	1.89	0.53
1:D:88:SER:HB3	1:D:117:ALA:HB2	1.91	0.52
1:A:567:VAL:O	1:A:571:CYS:N	2.42	0.52
1:B:873:ARG:NH2	1:D:587:TYR:OH	2.43	0.52
1:B:386:ASP:HA	1:B:407:PRO:HG2	1.91	0.52
1:D:849:ASN:HB3	1:D:859:SER:HB3	1.92	0.52
1:B:238:ILE:O	1:B:242:ALA:N	2.39	0.52
1:B:530:SER:HA	1:B:775:ARG:HG3	1.91	0.52
1:C:686:GLU:HA	1:C:717:LEU:HD12	1.91	0.52
1:D:817:VAL:O	1:D:821:GLY:N	2.43	0.52
1:A:641:TRP:CD2	1:B:622:GLN:HG3	2.45	0.52
1:B:345:LEU:HD23	1:B:353:TRP:HD1	1.75	0.52
1:C:819:ASN:HB3	1:C:820:ILE:HD12	1.91	0.52
1:C:779:THR:HA	1:C:782:ILE:HG22	1.91	0.52
1:A:435:VAL:HG22	1:A:512:LEU:HB2	1.91	0.52
1:B:505:LEU:HD11	1:B:512:LEU:HA	1.92	0.52
1:C:384:ARG:HE	1:C:387:PHE:HB3	1.75	0.52
1:C:505:LEU:HD21	1:C:513:ALA:HB2	1.92	0.52
1:D:629:LYS:O	1:D:633:THR:OG1	2.26	0.52
1:A:562:ASP:O	1:A:566:TYR:N	2.44	0.51
1:C:149:LEU:O	1:C:384:ARG:NH1	2.42	0.51
1:C:463:CYS:HB3	1:C:514:VAL:HG12	1.91	0.51
1:A:535[A]:THR:OG1	1:A:536:LEU:N	2.43	0.51
1:A:535[B]:THR:OG1	1:A:536:LEU:N	2.43	0.51
1:A:540:ILE:HG22	1:A:736:LEU:HD13	1.92	0.51
1:A:574:VAL:HG13	1:B:831:LEU:HD21	1.90	0.51
1:A:280:ARG:NH2	1:A:285:GLU:OE2	2.43	0.51
1:C:392:ILE:HD12	1:C:399:LEU:HD23	1.93	0.51
1:D:628:PRO:O	1:D:634:ARG:NH1	2.43	0.51
1:B:807:GLU:OE2	1:B:810:LYS:NZ	2.43	0.51
1:A:523:ARG:NH2	5:A:1001:GLU:O	2.37	0.51
1:A:659:LEU:HD13	1:D:654:ASN:HB3	1.92	0.51
1:A:440:GLU:HG2	1:A:443:TYR:CZ	2.46	0.51
1:B:306:LYS:NZ	1:B:308:ASP:OD1	2.41	0.51
1:A:625:GLU:HG3	1:A:626:LEU:HD12	1.93	0.51
1:D:681:GLU:OE1	1:D:727:ARG:NH2	2.44	0.51
1:D:782:ILE:HA	1:D:785:LEU:HB2	1.93	0.51
1:B:721:ASN:HD21	5:B:1001:GLU:HG2	1.75	0.51
1:A:44:TYR:HB2	1:A:82:LYS:HB3	1.92	0.51

Continued on next page...

Continued from previous page...

Atom-1	Atom-2	Interatomic distance (Å)	Clash overlap (Å)
1:B:446:PHE:HD2	1:B:448:LYS:HE3	1.75	0.51
1:C:753:THR:OG1	1:C:754:GLN:N	2.43	0.51
1:A:827:LEU:HD12	1:D:639:ILE:HG22	1.93	0.50
1:A:827:LEU:HD13	1:D:643:PHE:HB2	1.93	0.50
1:C:381:ASN:ND2	2:K:1:NAG:O7	2.43	0.50
1:A:856:SER:HA	1:A:859:SER:HB3	1.92	0.50
1:C:374:ARG:NH2	1:C:388:ASP:OD1	2.44	0.50
1:B:447:LYS:HB2	1:B:460:GLU:HB3	1.93	0.50
1:A:227:ILE:HG12	1:A:255:ILE:HB	1.93	0.50
1:B:129:HIS:CE1	1:B:131:GLN:HE21	2.29	0.50
1:B:744:PHE:HB2	1:B:799:TRP:CD1	2.46	0.50
1:B:785:LEU:HB3	1:B:790:LYS:HB3	1.93	0.50
1:D:532:PRO:HB3	1:D:763:GLY:HA3	1.93	0.50
1:B:463:CYS:O	1:B:467:LEU:N	2.42	0.50
1:D:58:ARG:HH11	1:D:80:THR:HG21	1.75	0.50
1:A:768:THR:HG21	1:A:775:ARG:HB2	1.93	0.50
1:D:841:GLU:HA	1:D:844:TYR:HB3	1.94	0.50
1:A:628:PRO:HB2	1:A:634:ARG:HD3	1.93	0.50
1:C:561:PRO:HA	1:C:564:TRP:HD1	1.75	0.50
1:A:71:LEU:HD21	1:A:334:VAL:HG23	1.94	0.49
1:B:518:ALA:H	1:B:523:ARG:NH1	2.10	0.49
1:D:191:ALA:HA	1:D:194:ARG:HE	1.77	0.49
1:B:465:ASP:OD1	1:B:468:ARG:NH1	2.45	0.49
1:D:506:ILE:HD11	1:D:527:ILE:HB	1.93	0.49
1:D:516:PRO:HB3	1:D:764:TYR:CZ	2.48	0.49
1:B:359:PHE:HA	1:B:362:LEU:HD23	1.94	0.49
1:D:173:THR:OG1	1:D:223:GLU:OE1	2.30	0.49
1:A:637:GLY:O	1:A:641:TRP:N	2.41	0.49
1:C:34:HIS:H	1:C:74:THR:HG23	1.78	0.49
1:B:553:PHE:HA	1:B:822:GLY:HA3	1.95	0.49
1:A:131:GLN:HE22	1:A:135:LYS:NZ	2.10	0.49
1:B:192:PRO:HG3	1:B:199:LEU:HD23	1.95	0.49
1:B:325:ASP:HB3	1:B:375:ILE:HD11	1.94	0.49
1:D:637:GLY:O	1:D:641:TRP:N	2.43	0.48
1:D:733:TYR:HE2	1:D:735:PHE:HD1	1.61	0.48
1:A:539:SER:HB3	1:A:754:GLN:HE21	1.78	0.48
1:A:702:TYR:HA	1:A:705:MET:HG2	1.95	0.48
1:B:849:ASN:O	1:B:853:GLU:N	2.46	0.48
1:D:433:LEU:HB2	1:D:478:TYR:HA	1.96	0.48
1:C:174:VAL:HG22	1:C:227:ILE:HB	1.95	0.48
1:D:306:LYS:HG2	1:D:308:ASP:H	1.78	0.48

Continued on next page...

Continued from previous page...

Atom-1	Atom-2	Interatomic distance (Å)	Clash overlap (Å)
1:D:447:LYS:H	1:D:459:PHE:HA	1.78	0.48
1:D:517:LEU:O	1:D:765:GLY:N	2.37	0.48
1:B:435:VAL:HG11	1:B:467:LEU:HD11	1.94	0.48
1:C:37:ARG:NH1	1:C:101:LEU:O	2.47	0.48
1:C:671:ALA:O	1:C:675:ALA:N	2.47	0.48
1:C:536:LEU:HD11	1:C:738:GLU:HB2	1.96	0.48
1:D:54:GLU:OE2	1:D:80:THR:OG1	2.29	0.48
1:A:712:ARG:O	1:A:713:ARG:NE	2.40	0.48
1:B:538:ILE:HG22	1:B:736:LEU:HD12	1.96	0.48
1:B:870:LYS:HG3	1:B:874:ARG:HH11	1.78	0.48
1:A:289:VAL:HG13	1:A:371:LEU:HD22	1.96	0.48
1:C:498:TRP:HE1	1:C:526:VAL:HG11	1.79	0.48
1:D:155:SER:OG	1:D:158:ARG:NH1	2.47	0.48
1:D:449:SER:HB2	1:D:453:LEU:HD21	1.96	0.48
1:D:656:ALA:O	1:D:660:THR:N	2.43	0.48
1:A:476:PHE:HE2	1:A:478:TYR:HB3	1.79	0.47
1:B:239:LEU:O	1:B:243:LEU:N	2.46	0.47
1:B:33:THR:N	1:B:73:ASN:O	2.47	0.47
1:B:745:VAL:HA	1:B:748:ARG:HG2	1.96	0.47
1:D:808:GLU:H	1:D:810:LYS:HZ1	1.62	0.47
1:A:141:ASN:ND2	1:A:143:ASP:OD2	2.48	0.47
1:A:460:GLU:HA	1:A:464:ILE:HD11	1.96	0.47
1:A:825:ILE:O	1:A:829:ALA:N	2.44	0.47
1:D:456:ASN:HD21	1:D:479:GLU:HA	1.79	0.47
1:A:261:LEU:HD12	1:A:264:LEU:HD13	1.96	0.47
1:A:439:LEU:HD22	1:A:446:PHE:HB2	1.97	0.47
1:B:447:LYS:HD3	1:B:457:ASP:HB3	1.97	0.47
1:C:293:ILE:HG12	1:C:316:MET:HE2	1.96	0.47
1:C:866:ARG:HA	1:C:869:LEU:HD23	1.96	0.47
1:A:426:ASP:HB2	1:A:475:GLY:HA3	1.96	0.47
1:B:559:LEU:HD23	1:C:815:LEU:HB2	1.97	0.47
1:D:125:LEU:HD12	1:D:345:LEU:HD12	1.96	0.47
1:D:436:THR:HG23	1:D:483:VAL:HB	1.97	0.47
1:D:536:LEU:O	1:D:762:LYS:N	2.48	0.47
1:D:436:THR:HG22	1:D:501:MET:HG2	1.97	0.47
1:D:458:ARG:HH21	1:D:480:ILE:HG22	1.79	0.47
1:A:849:ASN:HA	1:A:852:LEU:HB3	1.96	0.46
1:C:554:SER:OG	1:C:819:ASN:O	2.33	0.46
1:B:100:SER:O	1:B:344:SER:OG	2.33	0.46
1:B:518:ALA:H	1:B:523:ARG:HH12	1.61	0.46
1:B:654:ASN:HD22	1:C:815:LEU:HG	1.80	0.46

Continued on next page...

Continued from previous page...

Atom-1	Atom-2	Interatomic distance (Å)	Clash overlap (Å)
1:C:656:ALA:O	1:C:660:THR:OG1	2.29	0.46
1:D:525:LYS:HD2	1:D:526:VAL:HG13	1.97	0.46
1:D:552:VAL:HG12	1:D:553:PHE:H	1.79	0.46
1:A:286:ASN:HB2	1:A:289:VAL:HB	1.98	0.46
1:A:810:LYS:HG3	1:A:811:GLU:H	1.80	0.46
1:A:560:SER:HB2	1:A:563:ILE:HG12	1.97	0.46
1:A:563:ILE:HG13	1:B:820:ILE:HD13	1.98	0.46
1:B:544:LYS:HD3	1:B:751:ASN:HA	1.98	0.46
1:C:87:ASP:OD1	1:D:120:SER:OG	2.33	0.46
1:A:358:ARG:HH12	1:A:362:LEU:HD21	1.81	0.46
1:A:359:PHE:HA	1:A:362:LEU:HD12	1.98	0.46
1:A:852:LEU:HD23	1:A:853:GLU:H	1.79	0.46
1:A:668:ILE:O	1:A:670:SER:N	2.46	0.46
1:C:537:GLY:HA3	1:C:758:LEU:HG	1.97	0.46
1:C:540:ILE:HD11	1:C:734:ALA:HB1	1.97	0.46
1:D:69:THR:O	1:D:335:GLN:NE2	2.49	0.46
1:C:531:LYS:HG2	1:C:783:LEU:HD21	1.97	0.46
1:C:538:ILE:HD13	1:C:690:THR:HG22	1.98	0.46
1:B:497:GLN:OE1	1:B:503:ARG:NH1	2.49	0.45
1:C:543:ARG:HA	1:C:752:LEU:HD23	1.98	0.45
1:D:713:ARG:HD2	1:D:713:ARG:HA	1.86	0.45
1:A:846:SER:O	1:A:850:ALA:N	2.48	0.45
1:C:343:SER:OG	1:C:344:SER:N	2.47	0.45
1:B:559:LEU:HB2	1:B:564:TRP:CE2	2.52	0.45
1:C:724:GLY:HA3	1:C:735:PHE:CE1	2.52	0.45
1:B:445:LEU:HD12	1:B:446:PHE:H	1.81	0.45
1:B:493:ASP:O	1:B:495:ASN:N	2.49	0.45
1:C:593:HIS:HB3	1:C:596:ASN:HB3	1.98	0.45
1:D:540:ILE:HB	1:D:755:ILE:HB	1.98	0.45
1:D:610:ASN:HA	1:D:613:TRP:HB3	1.98	0.45
1:B:548:THR:HG23	1:B:549:ASN:H	1.81	0.45
1:A:467:LEU:HA	1:A:470:LEU:HB2	1.98	0.45
1:B:353:TRP:CZ3	1:B:355:PHE:HB2	2.52	0.45
1:B:445:LEU:N	1:B:460:GLU:O	2.44	0.45
1:C:678:THR:HG23	1:C:708:PHE:HE1	1.82	0.45
1:D:443:TYR:HD1	1:D:444:VAL:HG23	1.82	0.45
1:D:607:THR:HG23	1:D:610:ASN:H	1.81	0.45
1:D:270:ARG:HA	1:D:394:LEU:HD21	1.97	0.45
1:D:322:LEU:O	1:D:326:ALA:N	2.50	0.45
1:B:538:ILE:HD13	1:B:690:THR:HG22	1.98	0.45
1:D:406:ASP:HB3	1:D:409:SER:HB2	1.99	0.45

Continued on next page...

Continued from previous page...

Atom-1	Atom-2	Interatomic distance (Å)	Clash overlap (Å)
1:A:629:LYS:HA	1:A:634:ARG:HH21	1.82	0.45
1:B:488:TYR:HE1	5:B:1001:GLU:HB2	1.82	0.45
1:B:607:THR:HG23	1:B:610:ASN:H	1.82	0.45
1:B:731:SER:OG	1:B:732:ASP:N	2.50	0.45
1:C:393:SER:HB2	1:C:402:ILE:HD13	1.99	0.45
1:C:815:LEU:HD22	1:C:820:ILE:HD11	1.99	0.45
1:B:406:ASP:OD1	1:B:406:ASP:N	2.50	0.44
1:D:454:TYR:HA	1:D:458:ARG:HB3	1.98	0.44
1:A:462:TYR:CE1	1:A:794:MET:HG3	2.52	0.44
1:B:401:LYS:HG2	1:B:403:GLY:H	1.82	0.44
1:B:261:LEU:HD12	1:B:264:LEU:HD13	1.98	0.44
1:C:492:ASP:OD2	1:C:495:ASN:ND2	2.40	0.44
1:D:624:SER:OG	1:D:626:LEU:O	2.29	0.44
1:D:862:VAL:O	1:D:866:ARG:N	2.47	0.44
1:A:150:TYR:HA	1:A:322:LEU:HD13	2.00	0.44
1:B:823:ILE:O	1:B:827:LEU:N	2.46	0.44
1:D:540:ILE:HA	1:D:736:LEU:HA	1.98	0.44
1:B:378:ASN:ND2	1:B:380:THR:OG1	2.51	0.44
1:B:591:ASN:ND2	1:B:599:SER:OG	2.50	0.44
1:D:745:VAL:HG12	1:D:752:LEU:HG	2.00	0.44
2:J:1:NAG:H62	2:J:2:NAG:H82	1.99	0.44
1:B:61:VAL:O	1:B:65:ASN:ND2	2.51	0.44
1:B:519:ILE:HD11	1:B:765:GLY:HA3	2.00	0.44
1:C:541:LEU:HD11	1:C:752:LEU:HD13	2.00	0.44
1:C:641:TRP:CD1	1:D:622:GLN:HG3	2.53	0.44
1:C:672:ASP:O	1:C:676:LYS:NZ	2.46	0.44
1:A:374:ARG:NH1	1:A:388:ASP:OD1	2.51	0.44
1:A:737:MET:HB3	1:A:742:ILE:HD11	1.99	0.44
1:A:823:ILE:HA	1:A:826:VAL:HG22	2.00	0.44
1:C:85:LEU:O	1:C:111:HIS:ND1	2.50	0.44
1:C:267:GLU:OE1	1:C:270:ARG:NH1	2.51	0.44
1:C:654:ASN:ND2	1:D:815:LEU:HB2	2.33	0.44
1:A:259:LEU:HB2	1:A:318:THR:HG21	2.00	0.44
1:A:682:TYR:HE2	1:A:705:MET:HB2	1.83	0.44
1:B:702:TYR:HA	1:B:705:MET:HG2	2.00	0.44
1:B:627:MET:HG3	1:C:625:GLU:H	1.83	0.43
1:C:364:LYS:HD3	1:C:379:LYS:HA	2.00	0.43
4:I:1:NAG:H61	4:I:2:NAG:H2	2.00	0.43
1:C:411:LEU:HD22	1:C:411:LEU:HA	1.79	0.43
1:A:459:PHE:HZ	1:A:482:LEU:HD23	1.82	0.43
1:B:593:HIS:HB3	1:B:596:ASN:HB2	2.00	0.43

Continued on next page...

Continued from previous page...

Atom-1	Atom-2	Interatomic distance (Å)	Clash overlap (Å)
1:D:443:TYR:HA	1:D:462:TYR:H	1.83	0.43
1:B:447:LYS:H	1:B:459:PHE:HA	1.83	0.43
1:B:481:ARG:HD2	1:B:510:ALA:HB2	1.99	0.43
1:D:34:HIS:HB2	1:D:74:THR:HG22	2.00	0.43
1:A:515:ALA:HB3	1:A:517:LEU:HD23	2.00	0.43
1:A:607:THR:O	1:A:611:SER:N	2.51	0.43
1:B:83:ILE:HG13	1:B:85:LEU:H	1.83	0.43
1:D:823:ILE:HA	1:D:826:VAL:HG22	2.01	0.43
1:A:158:ARG:HD3	2:F:5:MAN:H5	2.00	0.43
1:A:466:LEU:O	1:A:470:LEU:N	2.42	0.43
1:C:65:ASN:O	1:C:68:ARG:NH1	2.39	0.43
1:C:150:TYR:HA	1:C:151:PRO:HD3	1.88	0.43
1:C:460:GLU:HA	1:C:464:ILE:HD11	2.01	0.43
1:B:467:LEU:HD22	1:B:514:VAL:HB	2.01	0.43
1:C:272:SER:O	1:C:431:ARG:NH2	2.41	0.43
1:D:177:ASP:HB3	1:D:204:LEU:HD12	2.01	0.43
1:D:444:VAL:HG13	1:D:459:PHE:CE1	2.54	0.43
1:A:425:THR:HG22	6:A:1004:NAG:H4	2.01	0.43
1:B:584:PHE:HE2	1:C:839:VAL:HA	1.84	0.43
1:D:155:SER:HA	1:D:158:ARG:HE	1.84	0.43
1:D:826:VAL:HA	1:D:829:ALA:HB3	2.00	0.42
1:A:516:PRO:HB2	5:A:1001:GLU:HB2	2.01	0.42
1:B:44:TYR:HA	1:B:82:LYS:HG2	2.00	0.42
1:D:389:LEU:HB2	1:D:405:TRP:HB3	2.01	0.42
1:D:393:SER:OG	1:D:394:LEU:N	2.52	0.42
1:D:677:GLN:HB3	1:D:679:LYS:HG2	2.00	0.42
1:A:589:TRP:NE1	1:B:867:MET:SD	2.93	0.42
1:A:846:SER:HA	1:A:849:ASN:HB2	2.01	0.42
1:B:85:LEU:HD12	1:B:111:HIS:HB2	2.01	0.42
1:B:785:LEU:O	1:B:790:LYS:N	2.50	0.42
1:A:845:LYS:O	1:A:849:ASN:N	2.49	0.42
1:B:605:ASN:O	1:B:610:ASN:ND2	2.42	0.42
1:C:154:SER:O	1:C:157:SER:OG	2.29	0.42
1:C:232:HIS:HA	1:C:235:ALA:HB3	2.01	0.42
1:C:393:SER:OG	1:C:394:LEU:N	2.52	0.42
1:A:523:ARG:NH1	5:A:1001:GLU:OXT	2.43	0.42
1:C:506:ILE:HD11	1:C:526:VAL:HB	2.01	0.42
1:C:440:GLU:HG3	1:C:441:GLU:H	1.84	0.42
1:A:548:THR:HG23	1:A:550:PRO:HD3	2.01	0.42
1:A:747:GLN:NE2	1:A:801:GLY:O	2.34	0.42
1:D:433:LEU:HD22	1:D:512:LEU:HG	2.01	0.42

Continued on next page...

Continued from previous page...

Atom-1	Atom-2	Interatomic distance (Å)	Clash overlap (Å)
1:D:522:VAL:HG13	1:D:696:LYS:HZ3	1.84	0.42
1:A:720:SER:O	1:A:722:GLU:N	2.53	0.41
1:B:540:ILE:HG23	1:B:734:ALA:HB1	2.02	0.41
1:A:502:VAL:HG12	1:A:527:ILE:HD13	2.03	0.41
1:B:440:GLU:O	1:B:444:VAL:N	2.41	0.41
1:D:67:ASN:OD1	1:D:68:ARG:N	2.52	0.41
1:D:462:TYR:CE1	1:D:794:MET:HG3	2.55	0.41
1:A:700:SER:O	1:A:704:LYS:N	2.44	0.41
1:D:708:PHE:HA	1:D:711:SER:HB3	2.02	0.41
1:A:443:TYR:HA	1:A:462:TYR:HB3	2.02	0.41
1:B:403:GLY:HA3	1:B:413:MET:HA	2.02	0.41
1:B:589:TRP:HA	1:B:604:ASN:HB3	2.02	0.41
1:C:93:LYS:O	1:C:97:ASP:N	2.50	0.41
1:A:693:PHE:O	1:A:697:SER:N	2.53	0.41
1:B:586:PRO:HG3	1:C:842:PHE:HA	2.02	0.41
1:B:749:ASN:HD22	1:B:752:LEU:HD22	1.86	0.41
1:C:425:THR:O	1:C:427:SER:N	2.53	0.41
1:C:443:TYR:HB2	1:C:463:CYS:SG	2.60	0.41
1:D:89:PHE:CE2	1:D:93:LYS:HD2	2.56	0.41
1:D:267:GLU:OE2	1:D:270:ARG:NH2	2.54	0.41
1:D:693:PHE:O	1:D:697:SER:OG	2.26	0.41
1:D:768:THR:HB	1:D:772:SER:HB2	2.03	0.41
1:D:808:GLU:HG3	1:D:810:LYS:HZ3	1.86	0.41
1:A:169:TRP:HE3	1:A:172:VAL:HG22	1.85	0.41
1:A:256:PHE:HB2	1:A:261:LEU:HD22	2.02	0.41
1:A:446:PHE:HE1	1:A:458:ARG:HD2	1.85	0.41
1:A:488:TYR:HB2	1:A:688:GLY:HA2	2.01	0.41
1:A:613:TRP:CD2	1:D:634:ARG:HD2	2.56	0.41
1:B:163:LEU:HD12	1:B:411:LEU:HD11	2.03	0.41
1:D:571:CYS:HA	1:D:574:VAL:HG12	2.03	0.41
1:D:842:PHE:HZ	1:D:864:GLU:HG3	1.86	0.41
1:C:661:VAL:HA	1:C:664:MET:HB2	2.01	0.41
1:A:169:TRP:CE3	1:A:225:HIS:HB3	2.56	0.41
1:A:376:THR:HG21	1:A:386:ASP:HB3	2.03	0.41
1:A:489:GLY:HA2	1:A:502:VAL:HG22	2.01	0.41
1:A:533:PHE:HB2	1:A:791:LEU:HD11	2.03	0.41
1:B:541:LEU:HD21	1:B:752:LEU:HD21	2.03	0.41
1:C:110:SER:HA	1:C:133:ARG:HG3	2.02	0.41
1:C:201:ILE:HD12	1:C:201:ILE:H	1.85	0.41
1:D:64:ILE:HG22	1:D:71:LEU:HB2	2.03	0.41
1:D:181:GLY:HA2	1:D:184:ARG:NE	2.36	0.41

Continued on next page...

Continued from previous page...

Atom-1	Atom-2	Interatomic distance (Å)	Clash overlap (Å)
1:D:659:LEU:HD23	1:D:659:LEU:HA	1.92	0.41
1:A:716:VAL:O	1:A:733:TYR:OH	2.34	0.41
1:B:443:TYR:O	1:B:463:CYS:N	2.49	0.40
1:B:499:ASN:OD1	1:B:500:GLY:N	2.54	0.40
1:B:293:ILE:HG23	1:B:316:MET:HG2	2.02	0.40
1:C:443:TYR:CZ	1:C:516:PRO:HG3	2.56	0.40
1:C:454:TYR:HB2	1:C:457:ASP:HB3	2.03	0.40
1:D:821:GLY:HA2	1:D:824:PHE:HD2	1.85	0.40
1:A:743:GLU:O	1:A:746:THR:OG1	2.28	0.40
1:A:559:LEU:HB2	1:A:564:TRP:NE1	2.35	0.40
1:A:764:TYR:HD1	1:A:764:TYR:HA	1.75	0.40
1:A:785:LEU:HD13	1:A:790:LYS:HB3	2.04	0.40
1:C:468:ARG:HA	1:C:471[B]:SER:HB3	2.02	0.40
1:D:443:TYR:CD1	1:D:444:VAL:HG23	2.57	0.40
1:D:518:ALA:HB1	1:D:762:LYS:HB3	2.02	0.40
1:D:286:ASN:HD22	1:D:287:THR:H	1.70	0.40

There are no symmetry-related clashes.

5.3 Torsion angles [i](#)

5.3.1 Protein backbone [i](#)

In the following table, the Percentiles column shows the percent Ramachandran outliers of the chain as a percentile score with respect to all PDB entries followed by that with respect to all EM entries.

The Analysed column shows the number of residues for which the backbone conformation was analysed, and the total number of residues.

Mol	Chain	Analysed	Favoured	Allowed	Outliers	Percentiles	
1	A	842/912 (92%)	702 (83%)	123 (15%)	17 (2%)	6	34
1	B	841/912 (92%)	703 (84%)	128 (15%)	10 (1%)	11	43
1	C	841/912 (92%)	708 (84%)	127 (15%)	6 (1%)	19	54
1	D	841/912 (92%)	688 (82%)	137 (16%)	16 (2%)	6	35
All	All	3365/3648 (92%)	2801 (83%)	515 (15%)	49 (2%)	11	39

All (49) Ramachandran outliers are listed below:

Mol	Chain	Res	Type
1	A	86	TYR
1	A	378	ASN
1	B	73	ASN
1	B	490	ALA
1	B	494	VAL
1	D	69	THR
1	D	198	ARG
1	D	553	PHE
1	A	422	ALA
1	A	802	ASN
1	B	353	TRP
1	D	340	MET
1	D	434	ILE
1	D	554	SER
1	A	79	ASP
1	A	721	ASN
1	B	493	ASP
1	C	195	TYR
1	C	425	THR
1	C	426	ASP
1	D	450	ASP
1	D	631	LEU
1	D	713	ARG
1	A	78	TYR
1	A	668	ILE
1	A	669	ASP
1	A	719	LYS
1	A	819	ASN
1	B	624	SER
1	A	375	ILE
1	A	720	SER
1	A	807	GLU
1	B	46	GLU
1	B	380	THR
1	B	588	GLU
1	B	870	LYS
1	D	197	LEU
1	D	427	SER
1	D	433	LEU
1	D	855	ARG
1	C	441	GLU
1	C	45	VAL
1	D	592	PRO

Continued on next page...

Continued from previous page...

Mol	Chain	Res	Type
1	A	801	GLY
1	D	435	VAL
1	D	805	PRO
1	C	821	GLY
1	A	441	GLU
1	A	820	ILE

5.3.2 Protein sidechains [i](#)

In the following table, the Percentiles column shows the percent sidechain outliers of the chain as a percentile score with respect to all PDB entries followed by that with respect to all EM entries.

The Analysed column shows the number of residues for which the sidechain conformation was analysed, and the total number of residues.

Mol	Chain	Analysed	Rotameric	Outliers	Percentiles	
1	A	735/798 (92%)	724 (98%)	11 (2%)	60	74
1	B	734/798 (92%)	722 (98%)	12 (2%)	58	73
1	C	734/798 (92%)	720 (98%)	14 (2%)	52	70
1	D	734/798 (92%)	724 (99%)	10 (1%)	62	75
All	All	2937/3192 (92%)	2890 (98%)	47 (2%)	60	73

All (47) residues with a non-rotameric sidechain are listed below:

Mol	Chain	Res	Type
1	A	123	ASN
1	A	220	ARG
1	A	448	LYS
1	A	456	ASN
1	A	471[A]	SER
1	A	471[B]	SER
1	A	534	MET
1	A	605	ASN
1	A	737	MET
1	A	748	ARG
1	A	869	LEU
1	B	123	ASN
1	B	194	ARG
1	B	354	ARG
1	B	423	ASN

Continued on next page...

Continued from previous page...

Mol	Chain	Res	Type
1	B	448	LYS
1	B	487	LYS
1	B	543	ARG
1	B	549	ASN
1	B	626	LEU
1	B	793	MET
1	B	797	LYS
1	B	819	ASN
1	C	123	ASN
1	C	270	ARG
1	C	354	ARG
1	C	384	ARG
1	C	389	LEU
1	C	411	LEU
1	C	471[A]	SER
1	C	471[B]	SER
1	C	557	ASN
1	C	620	MET
1	C	713	ARG
1	C	800	ARG
1	C	819	ASN
1	C	866	ARG
1	D	65	ASN
1	D	158	ARG
1	D	194	ARG
1	D	286	ASN
1	D	389	LEU
1	D	458	ARG
1	D	604	ASN
1	D	626	LEU
1	D	854	LYS
1	D	870	LYS

Sometimes sidechains can be flipped to improve hydrogen bonding and reduce clashes. All (34) such sidechains are listed below:

Mol	Chain	Res	Type
1	A	123	ASN
1	A	129	HIS
1	A	131	GLN
1	A	456	ASN
1	A	491	GLN
1	A	508	HIS

Continued on next page...

Continued from previous page...

Mol	Chain	Res	Type
1	A	605	ASN
1	A	610	ASN
1	A	754	GLN
1	A	849	ASN
1	B	34	HIS
1	B	131	GLN
1	B	302	GLN
1	B	423	ASN
1	B	549	ASN
1	B	593	HIS
1	B	654	ASN
1	C	123	ASN
1	C	136	HIS
1	C	283	ASN
1	C	381	ASN
1	C	491	GLN
1	C	557	ASN
1	C	622	GLN
1	C	747	GLN
1	C	819	ASN
1	D	65	ASN
1	D	286	ASN
1	D	456	ASN
1	D	593	HIS
1	D	604	ASN
1	D	622	GLN
1	D	747	GLN
1	D	819	ASN

5.3.3 RNA [i](#)

There are no RNA molecules in this entry.

5.4 Non-standard residues in protein, DNA, RNA chains [i](#)

There are no non-standard protein/DNA/RNA residues in this entry.

5.5 Carbohydrates [i](#)

38 monosaccharides are modelled in this entry.

In the following table, the Counts columns list the number of bonds (or angles) for which Mogul statistics could be retrieved, the number of bonds (or angles) that are observed in the model and the number of bonds (or angles) that are defined in the Chemical Component Dictionary. The Link column lists molecule types, if any, to which the group is linked. The Z score for a bond length (or angle) is the number of standard deviations the observed value is removed from the expected value. A bond length (or angle) with $|Z| > 2$ is considered an outlier worth inspection. RMSZ is the root-mean-square of all Z scores of the bond lengths (or angles).

Mol	Type	Chain	Res	Link	Bond lengths			Bond angles		
					Counts	RMSZ	# Z > 2	Counts	RMSZ	# Z > 2
2	NAG	E	1	2,1	14,14,15	0.38	0	17,19,21	1.00	2 (11%)
2	NAG	E	2	2	14,14,15	0.52	0	17,19,21	1.59	1 (5%)
2	BMA	E	3	2	11,11,12	0.80	0	15,15,17	1.21	2 (13%)
2	MAN	E	4	2	11,11,12	1.43	2 (18%)	15,15,17	1.54	1 (6%)
2	MAN	E	5	2	11,11,12	1.22	1 (9%)	15,15,17	1.64	2 (13%)
2	NAG	F	1	2,1	14,14,15	0.32	0	17,19,21	0.81	0
2	NAG	F	2	2	14,14,15	0.57	0	17,19,21	0.68	0
2	BMA	F	3	2	11,11,12	0.79	0	15,15,17	1.05	1 (6%)
2	MAN	F	4	2	11,11,12	1.07	2 (18%)	15,15,17	1.56	2 (13%)
2	MAN	F	5	2	11,11,12	1.21	2 (18%)	15,15,17	1.55	2 (13%)
3	NAG	G	1	3,1	14,14,15	0.34	0	17,19,21	0.87	1 (5%)
3	NAG	G	2	3	14,14,15	1.22	1 (7%)	17,19,21	1.56	1 (5%)
3	BMA	G	3	3	11,11,12	0.74	0	15,15,17	0.73	0
4	NAG	H	1	4,1	14,14,15	0.49	0	17,19,21	0.66	0
4	NAG	H	2	4	14,14,15	1.08	1 (7%)	17,19,21	0.56	0
4	NAG	I	1	4,1	14,14,15	0.88	1 (7%)	17,19,21	1.26	1 (5%)
4	NAG	I	2	4	14,14,15	1.07	1 (7%)	17,19,21	0.92	1 (5%)
2	NAG	J	1	2,1	14,14,15	0.97	1 (7%)	17,19,21	1.56	1 (5%)
2	NAG	J	2	2	14,14,15	0.27	0	17,19,21	0.86	1 (5%)
2	BMA	J	3	2	11,11,12	1.72	3 (27%)	15,15,17	1.40	2 (13%)
2	MAN	J	4	2	11,11,12	1.44	4 (36%)	15,15,17	1.73	2 (13%)
2	MAN	J	5	2	11,11,12	0.88	0	15,15,17	0.86	0
2	NAG	K	1	2,1	14,14,15	0.32	0	17,19,21	0.85	1 (5%)
2	NAG	K	2	2	14,14,15	0.43	0	17,19,21	0.50	0
2	BMA	K	3	2	11,11,12	1.28	1 (9%)	15,15,17	1.18	1 (6%)
2	MAN	K	4	2	11,11,12	1.10	1 (9%)	15,15,17	1.54	3 (20%)
2	MAN	K	5	2	11,11,12	1.05	1 (9%)	15,15,17	1.32	2 (13%)
2	NAG	L	1	2,1	14,14,15	0.50	0	17,19,21	0.75	0
2	NAG	L	2	2	14,14,15	0.99	1 (7%)	17,19,21	1.90	1 (5%)
2	BMA	L	3	2	11,11,12	1.65	3 (27%)	15,15,17	1.86	5 (33%)

Mol	Type	Chain	Res	Link	Bond lengths			Bond angles		
					Counts	RMSZ	# Z > 2	Counts	RMSZ	# Z > 2
2	MAN	L	4	2	11,11,12	1.14	1 (9%)	15,15,17	0.86	1 (6%)
2	MAN	L	5	2	11,11,12	1.56	2 (18%)	15,15,17	1.67	2 (13%)
3	NAG	M	1	3,1	14,14,15	0.90	1 (7%)	17,19,21	1.67	1 (5%)
3	NAG	M	2	3	14,14,15	0.21	0	17,19,21	0.67	1 (5%)
3	BMA	M	3	3	11,11,12	1.77	2 (18%)	15,15,17	1.64	4 (26%)
3	NAG	N	1	3,1	14,14,15	1.22	2 (14%)	17,19,21	1.07	1 (5%)
3	NAG	N	2	3	14,14,15	1.14	1 (7%)	17,19,21	1.57	1 (5%)
3	BMA	N	3	3	11,11,12	0.97	0	15,15,17	0.70	0

In the following table, the Chirals column lists the number of chiral outliers, the number of chiral centers analysed, the number of these observed in the model and the number defined in the Chemical Component Dictionary. Similar counts are reported in the Torsion and Rings columns. '-' means no outliers of that kind were identified.

Mol	Type	Chain	Res	Link	Chirals	Torsions	Rings
2	NAG	E	1	2,1	-	4/6/23/26	0/1/1/1
2	NAG	E	2	2	-	1/6/23/26	0/1/1/1
2	BMA	E	3	2	-	2/2/19/22	0/1/1/1
2	MAN	E	4	2	-	1/2/19/22	1/1/1/1
2	MAN	E	5	2	-	0/2/19/22	1/1/1/1
2	NAG	F	1	2,1	-	3/6/23/26	0/1/1/1
2	NAG	F	2	2	-	2/6/23/26	0/1/1/1
2	BMA	F	3	2	-	1/2/19/22	0/1/1/1
2	MAN	F	4	2	-	1/2/19/22	1/1/1/1
2	MAN	F	5	2	-	2/2/19/22	0/1/1/1
3	NAG	G	1	3,1	-	0/6/23/26	0/1/1/1
3	NAG	G	2	3	-	4/6/23/26	0/1/1/1
3	BMA	G	3	3	-	0/2/19/22	0/1/1/1
4	NAG	H	1	4,1	-	3/6/23/26	0/1/1/1
4	NAG	H	2	4	-	1/6/23/26	0/1/1/1
4	NAG	I	1	4,1	-	2/6/23/26	0/1/1/1
4	NAG	I	2	4	-	2/6/23/26	0/1/1/1
2	NAG	J	1	2,1	-	4/6/23/26	0/1/1/1
2	NAG	J	2	2	-	2/6/23/26	0/1/1/1
2	BMA	J	3	2	-	0/2/19/22	0/1/1/1
2	MAN	J	4	2	-	1/2/19/22	0/1/1/1
2	MAN	J	5	2	-	1/2/19/22	0/1/1/1
2	NAG	K	1	2,1	-	0/6/23/26	0/1/1/1

Continued on next page...

Continued from previous page...

Mol	Type	Chain	Res	Link	Chirals	Torsions	Rings
2	NAG	K	2	2	-	2/6/23/26	0/1/1/1
2	BMA	K	3	2	-	1/2/19/22	0/1/1/1
2	MAN	K	4	2	-	1/2/19/22	0/1/1/1
2	MAN	K	5	2	-	0/2/19/22	1/1/1/1
2	NAG	L	1	2,1	-	4/6/23/26	0/1/1/1
2	NAG	L	2	2	-	0/6/23/26	0/1/1/1
2	BMA	L	3	2	-	0/2/19/22	0/1/1/1
2	MAN	L	4	2	-	0/2/19/22	0/1/1/1
2	MAN	L	5	2	-	1/2/19/22	1/1/1/1
3	NAG	M	1	3,1	-	4/6/23/26	0/1/1/1
3	NAG	M	2	3	-	2/6/23/26	0/1/1/1
3	BMA	M	3	3	-	1/2/19/22	0/1/1/1
3	NAG	N	1	3,1	-	2/6/23/26	0/1/1/1
3	NAG	N	2	3	-	2/6/23/26	0/1/1/1
3	BMA	N	3	3	-	0/2/19/22	0/1/1/1

All (35) bond length outliers are listed below:

Mol	Chain	Res	Type	Atoms	Z	Observed(Å)	Ideal(Å)
3	G	2	NAG	O5-C1	4.50	1.51	1.43
3	M	3	BMA	C1-C2	4.03	1.61	1.52
3	N	2	NAG	O5-C1	4.02	1.50	1.43
4	I	2	NAG	C1-C2	3.86	1.57	1.52
3	N	1	NAG	O5-C1	-3.66	1.37	1.43
2	J	3	BMA	C2-C3	3.65	1.58	1.52
4	H	2	NAG	C1-C2	3.44	1.57	1.52
3	M	3	BMA	C2-C3	3.41	1.57	1.52
2	J	1	NAG	O5-C1	3.39	1.49	1.43
2	L	5	MAN	C1-C2	3.35	1.60	1.52
2	L	2	NAG	O5-C1	3.34	1.49	1.43
3	M	1	NAG	O5-C1	3.17	1.49	1.43
2	L	5	MAN	O5-C5	2.98	1.49	1.43
2	J	3	BMA	C4-C3	2.97	1.60	1.52
2	E	5	MAN	O5-C5	2.93	1.49	1.43
2	L	3	BMA	C4-C3	2.92	1.59	1.52
2	K	3	BMA	C2-C3	2.92	1.57	1.52
4	I	1	NAG	C1-C2	2.70	1.56	1.52
2	E	4	MAN	O5-C5	2.67	1.48	1.43
2	E	4	MAN	C2-C3	2.56	1.56	1.52
2	L	3	BMA	C2-C3	2.47	1.56	1.52
2	L	4	MAN	O5-C1	-2.47	1.39	1.43

Continued on next page...

Continued from previous page...

Mol	Chain	Res	Type	Atoms	Z	Observed(Å)	Ideal(Å)
2	J	4	MAN	O5-C1	2.41	1.47	1.43
2	F	5	MAN	O5-C5	2.37	1.48	1.43
2	J	4	MAN	O5-C5	2.33	1.48	1.43
2	F	4	MAN	O5-C5	2.32	1.48	1.43
2	K	4	MAN	C4-C5	2.24	1.57	1.53
2	J	4	MAN	C1-C2	2.24	1.57	1.52
2	J	3	BMA	C4-C5	2.24	1.57	1.53
2	L	3	BMA	C4-C5	2.21	1.57	1.53
2	F	4	MAN	C1-C2	2.07	1.57	1.52
2	F	5	MAN	O5-C1	2.07	1.47	1.43
2	J	4	MAN	C4-C3	2.05	1.57	1.52
3	N	1	NAG	C1-C2	2.05	1.55	1.52
2	K	5	MAN	O5-C5	2.04	1.47	1.43

All (47) bond angle outliers are listed below:

Mol	Chain	Res	Type	Atoms	Z	Observed(°)	Ideal(°)
2	L	2	NAG	C1-O5-C5	7.06	121.64	112.19
3	M	1	NAG	C1-O5-C5	6.29	120.61	112.19
3	N	2	NAG	C1-O5-C5	6.18	120.47	112.19
3	G	2	NAG	C1-O5-C5	6.08	120.34	112.19
2	E	2	NAG	C1-O5-C5	5.98	120.20	112.19
2	J	1	NAG	C1-O5-C5	5.84	120.01	112.19
2	J	4	MAN	C1-O5-C5	5.47	119.51	112.19
2	E	5	MAN	C1-O5-C5	5.17	119.11	112.19
2	F	4	MAN	C1-O5-C5	5.16	119.10	112.19
2	L	5	MAN	C1-O5-C5	4.95	118.82	112.19
2	F	5	MAN	C1-O5-C5	4.86	118.69	112.19
2	E	4	MAN	C1-O5-C5	4.74	118.54	112.19
4	I	1	NAG	C1-O5-C5	4.27	117.92	112.19
2	K	4	MAN	C1-O5-C5	4.21	117.83	112.19
2	K	5	MAN	C1-O5-C5	4.10	117.68	112.19
2	L	3	BMA	C2-C3-C4	3.66	117.30	110.86
3	N	1	NAG	C4-C3-C2	3.35	115.93	111.02
3	M	3	BMA	C1-C2-C3	3.29	114.43	109.64
2	J	3	BMA	C2-C3-C4	3.22	116.53	110.86
2	L	5	MAN	O2-C2-C3	-3.15	103.62	110.15
4	I	2	NAG	C1-O5-C5	3.12	116.37	112.19
2	K	3	BMA	C2-C3-C4	3.10	116.31	110.86
2	L	3	BMA	C1-O5-C5	-3.05	108.10	112.19
3	M	3	BMA	C1-O5-C5	2.99	116.19	112.19
3	G	1	NAG	C1-O5-C5	2.96	116.15	112.19

Continued on next page...

Continued from previous page...

Mol	Chain	Res	Type	Atoms	Z	Observed(°)	Ideal(°)
2	J	3	BMA	C3-C4-C5	2.94	115.57	110.23
2	K	1	NAG	C1-O5-C5	2.80	115.94	112.19
2	L	3	BMA	C1-C2-C3	2.75	113.65	109.64
2	F	3	BMA	C1-O5-C5	2.72	115.83	112.19
3	M	3	BMA	C2-C3-C4	2.70	115.61	110.86
2	L	3	BMA	C3-C4-C5	2.63	115.01	110.23
2	E	1	NAG	C1-O5-C5	2.58	115.64	112.19
3	M	3	BMA	O5-C5-C4	-2.45	104.87	110.83
2	L	3	BMA	O5-C5-C6	2.43	112.40	107.66
2	K	4	MAN	O2-C2-C3	-2.42	105.15	110.15
2	E	3	BMA	C1-C2-C3	2.37	113.10	109.64
3	M	2	NAG	C1-O5-C5	2.32	115.30	112.19
2	J	4	MAN	C2-C3-C4	2.24	114.81	110.86
2	F	5	MAN	O2-C2-C3	-2.23	105.53	110.15
2	K	4	MAN	C3-C4-C5	2.21	114.23	110.23
2	E	5	MAN	O2-C2-C3	-2.20	105.59	110.15
2	L	4	MAN	O2-C2-C3	-2.18	105.64	110.15
2	J	2	NAG	C1-O5-C5	2.16	115.08	112.19
2	F	4	MAN	O2-C2-C3	-2.11	105.78	110.15
2	E	3	BMA	C1-O5-C5	2.08	114.97	112.19
2	E	1	NAG	O4-C4-C3	2.06	115.23	110.38
2	K	5	MAN	O2-C2-C3	-2.02	105.97	110.15

There are no chirality outliers.

All (57) torsion outliers are listed below:

Mol	Chain	Res	Type	Atoms
4	I	1	NAG	O5-C5-C6-O6
2	E	3	BMA	C4-C5-C6-O6
2	F	5	MAN	O5-C5-C6-O6
2	J	2	NAG	O5-C5-C6-O6
2	F	2	NAG	O5-C5-C6-O6
2	F	5	MAN	C4-C5-C6-O6
2	E	1	NAG	O5-C5-C6-O6
2	E	3	BMA	O5-C5-C6-O6
4	I	1	NAG	C4-C5-C6-O6
2	E	1	NAG	C4-C5-C6-O6
3	N	2	NAG	C4-C5-C6-O6
3	N	1	NAG	O5-C5-C6-O6
2	J	2	NAG	C4-C5-C6-O6
3	M	2	NAG	O5-C5-C6-O6
2	F	2	NAG	C4-C5-C6-O6

Continued on next page...

Continued from previous page...

Mol	Chain	Res	Type	Atoms
3	M	2	NAG	C4-C5-C6-O6
2	E	1	NAG	C8-C7-N2-C2
2	E	1	NAG	O7-C7-N2-C2
2	F	1	NAG	C8-C7-N2-C2
2	F	1	NAG	O7-C7-N2-C2
2	J	1	NAG	C8-C7-N2-C2
2	J	1	NAG	O7-C7-N2-C2
2	K	2	NAG	C8-C7-N2-C2
2	K	2	NAG	O7-C7-N2-C2
2	L	1	NAG	C8-C7-N2-C2
2	L	1	NAG	O7-C7-N2-C2
3	G	2	NAG	C8-C7-N2-C2
3	G	2	NAG	O7-C7-N2-C2
3	M	1	NAG	C8-C7-N2-C2
3	M	1	NAG	O7-C7-N2-C2
4	H	1	NAG	C8-C7-N2-C2
4	H	1	NAG	O7-C7-N2-C2
3	N	2	NAG	O5-C5-C6-O6
2	J	1	NAG	O5-C5-C6-O6
3	G	2	NAG	C4-C5-C6-O6
3	N	1	NAG	C4-C5-C6-O6
3	G	2	NAG	O5-C5-C6-O6
2	J	4	MAN	O5-C5-C6-O6
4	I	2	NAG	C4-C5-C6-O6
3	M	3	BMA	O5-C5-C6-O6
4	I	2	NAG	O5-C5-C6-O6
2	J	5	MAN	O5-C5-C6-O6
2	F	3	BMA	O5-C5-C6-O6
2	L	1	NAG	C4-C5-C6-O6
2	E	2	NAG	O5-C5-C6-O6
4	H	1	NAG	O5-C5-C6-O6
2	K	3	BMA	O5-C5-C6-O6
4	H	2	NAG	O5-C5-C6-O6
2	F	1	NAG	O5-C5-C6-O6
2	L	5	MAN	C4-C5-C6-O6
2	K	4	MAN	O5-C5-C6-O6
3	M	1	NAG	O5-C5-C6-O6
2	L	1	NAG	O5-C5-C6-O6
3	M	1	NAG	C4-C5-C6-O6
2	F	4	MAN	C4-C5-C6-O6
2	J	1	NAG	C4-C5-C6-O6
2	E	4	MAN	C4-C5-C6-O6

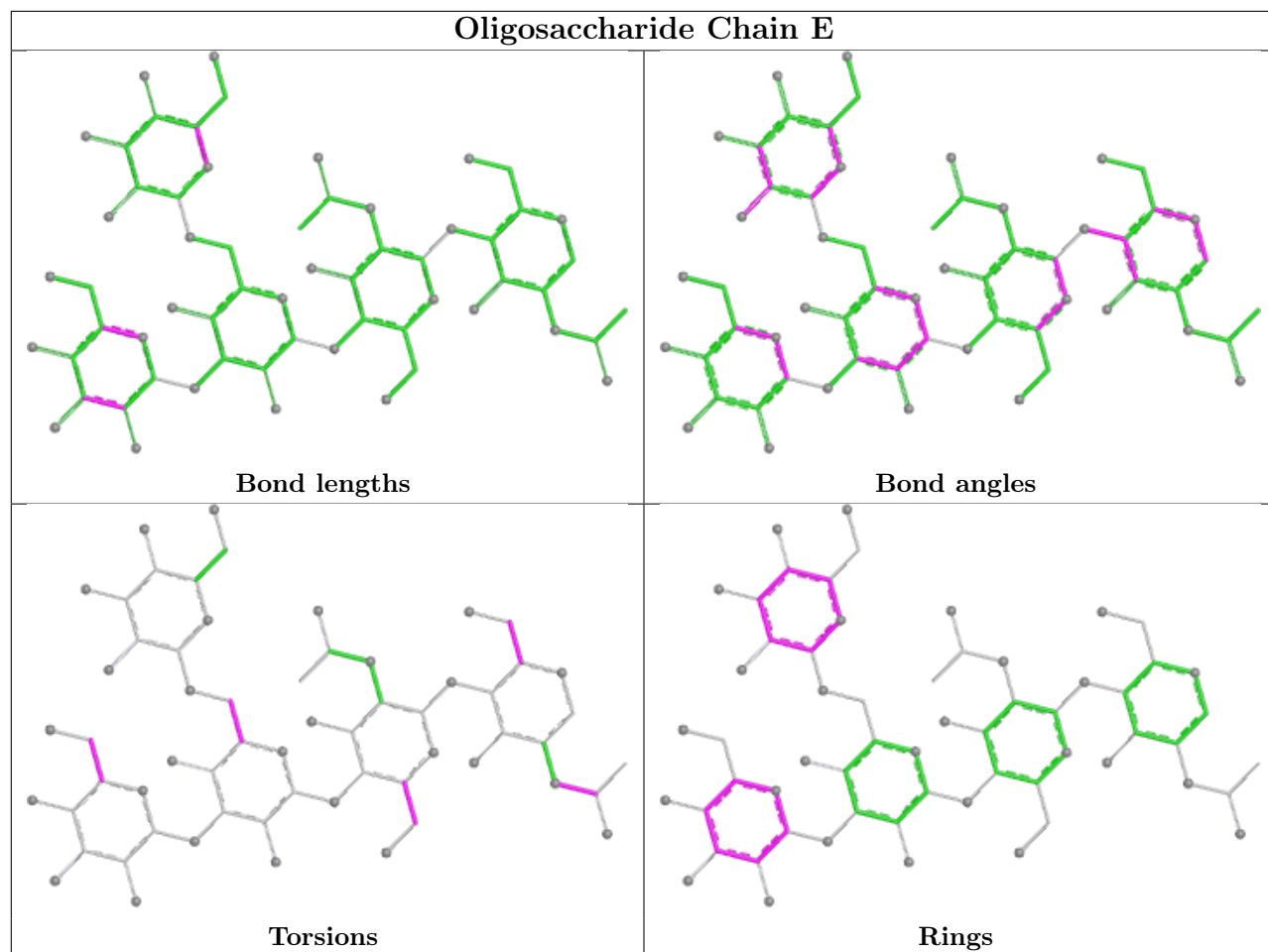
All (5) ring outliers are listed below:

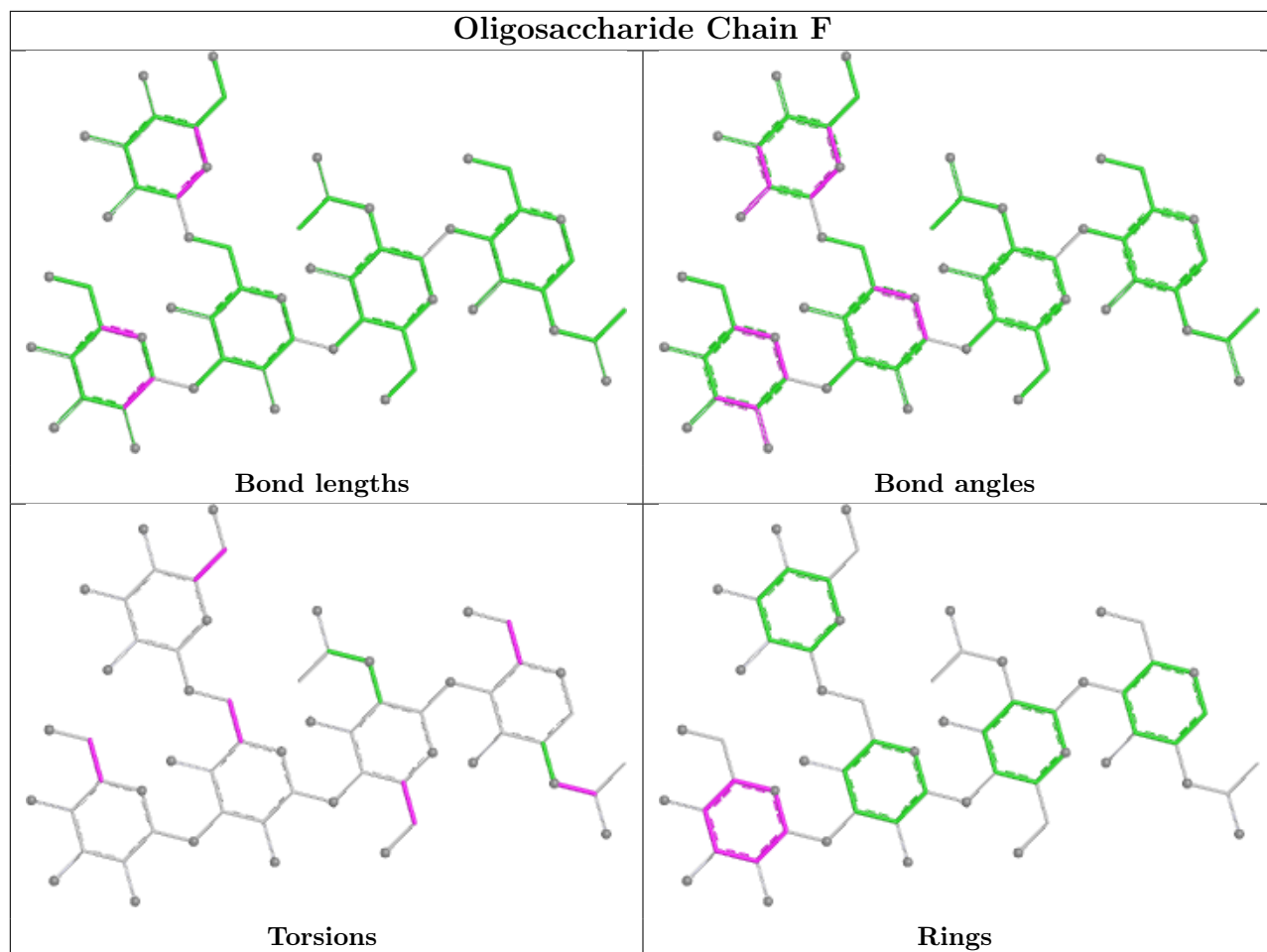
Mol	Chain	Res	Type	Atoms
2	E	4	MAN	C1-C2-C3-C4-C5-O5
2	E	5	MAN	C1-C2-C3-C4-C5-O5
2	L	5	MAN	C1-C2-C3-C4-C5-O5
2	K	5	MAN	C1-C2-C3-C4-C5-O5
2	F	4	MAN	C1-C2-C3-C4-C5-O5

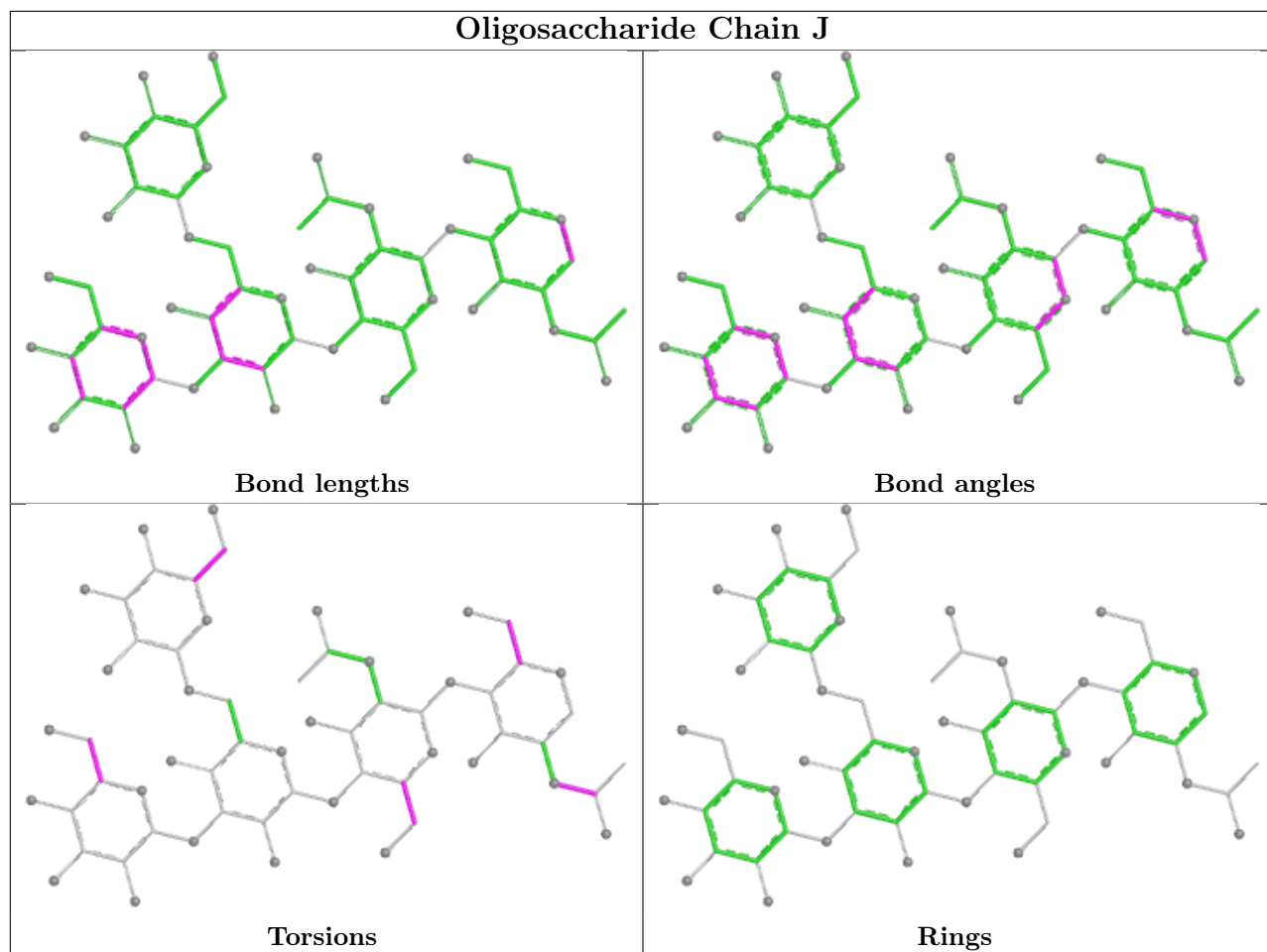
6 monomers are involved in 4 short contacts:

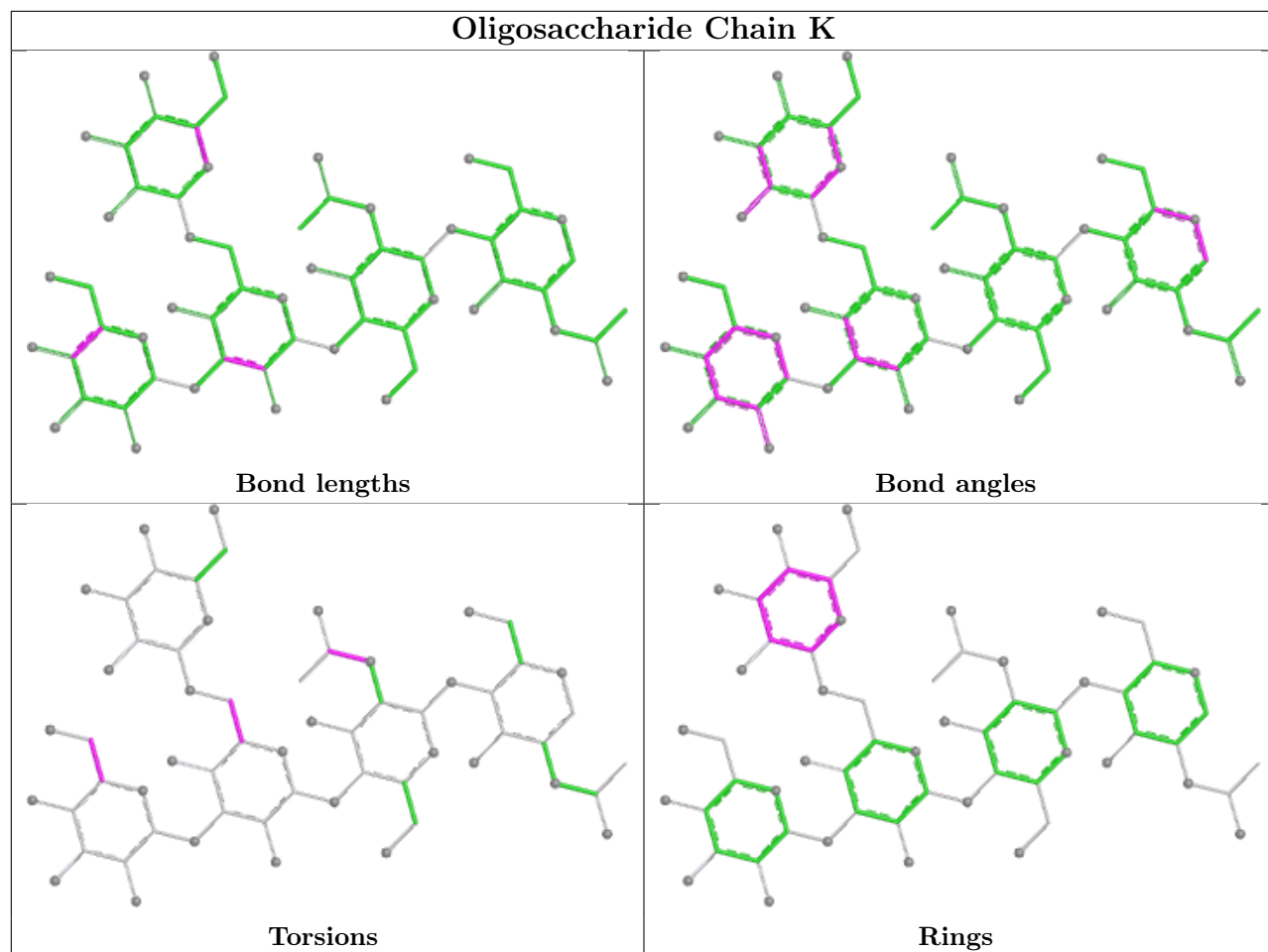
Mol	Chain	Res	Type	Clashes	Symm-Clashes
2	J	1	NAG	1	0
2	J	2	NAG	1	0
4	I	1	NAG	1	0
2	K	1	NAG	1	0
2	F	5	MAN	1	0
4	I	2	NAG	1	0

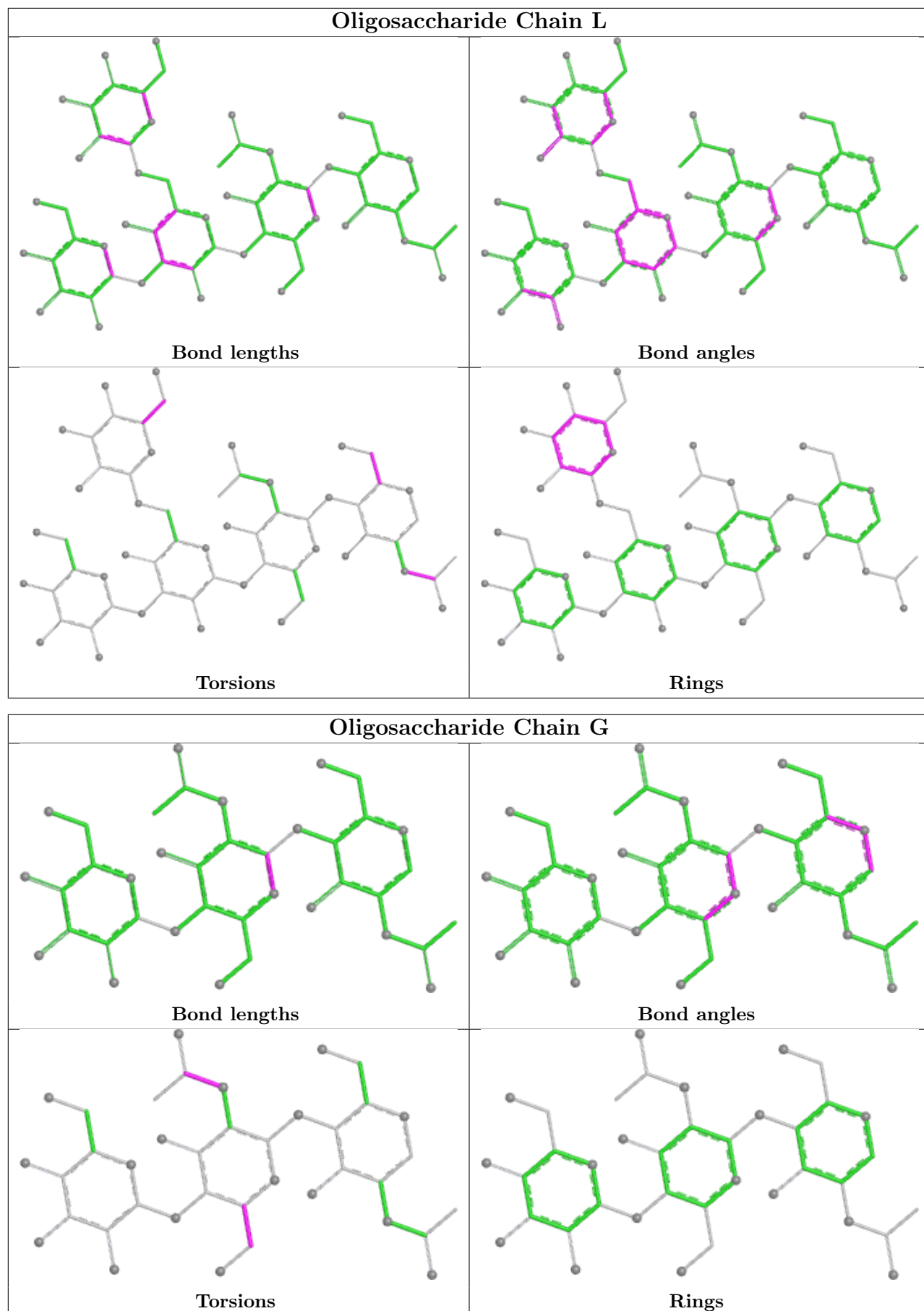
The following is a two-dimensional graphical depiction of Mogul quality analysis of bond lengths, bond angles, torsion angles, and ring geometry for oligosaccharide.

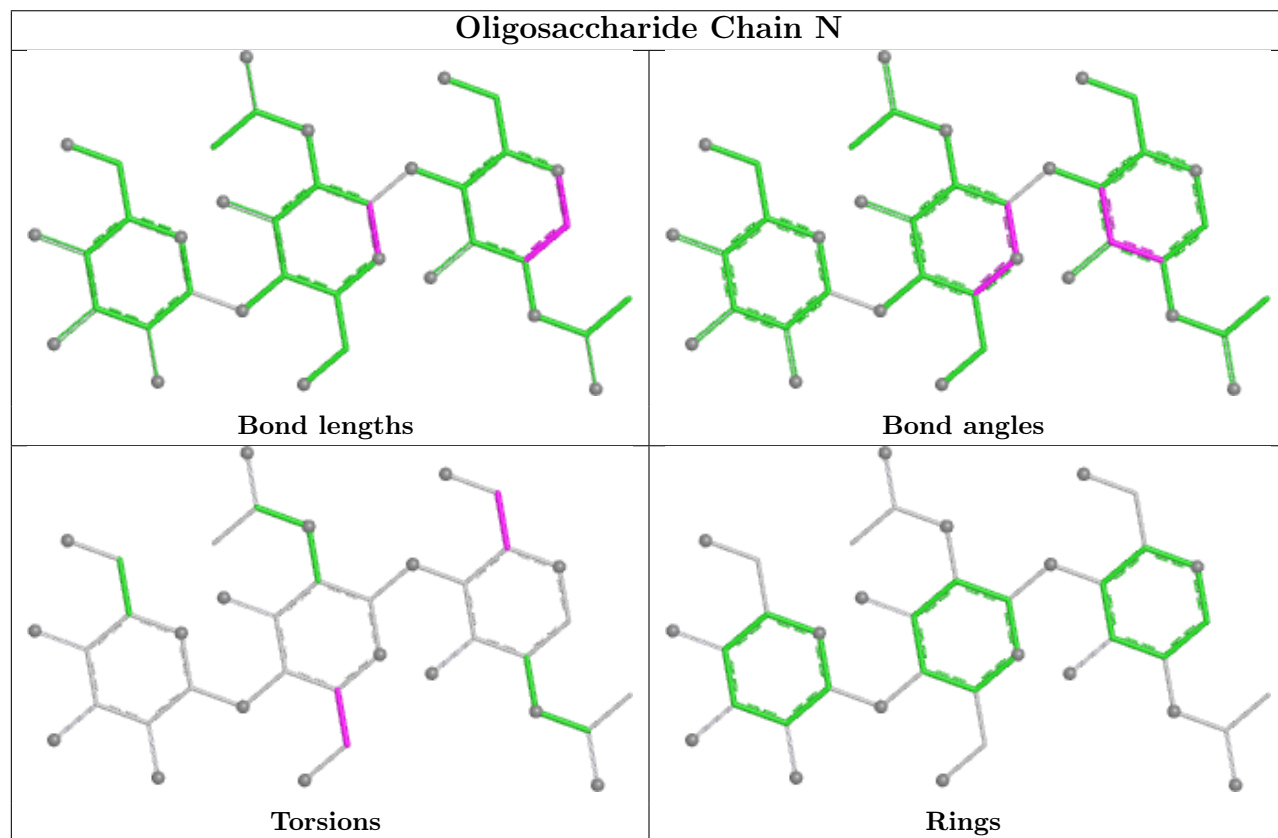
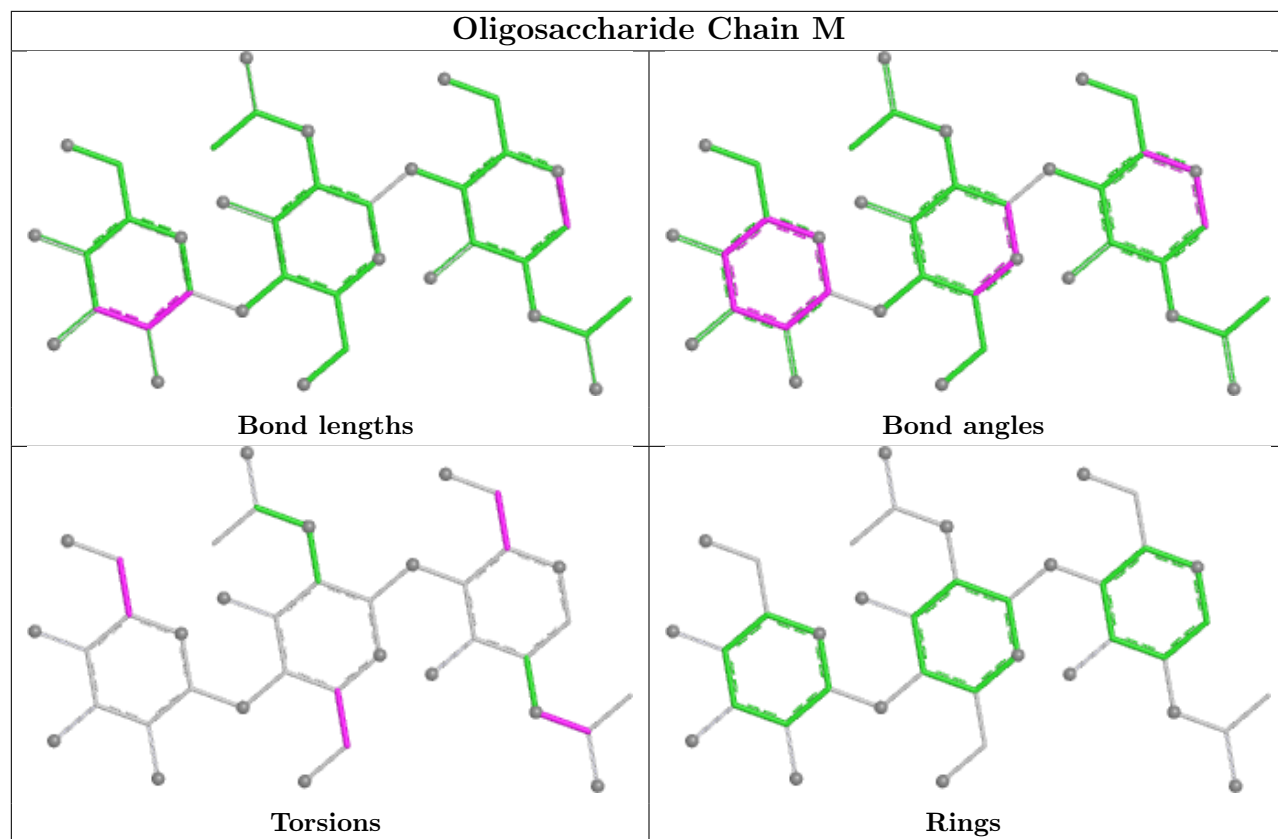


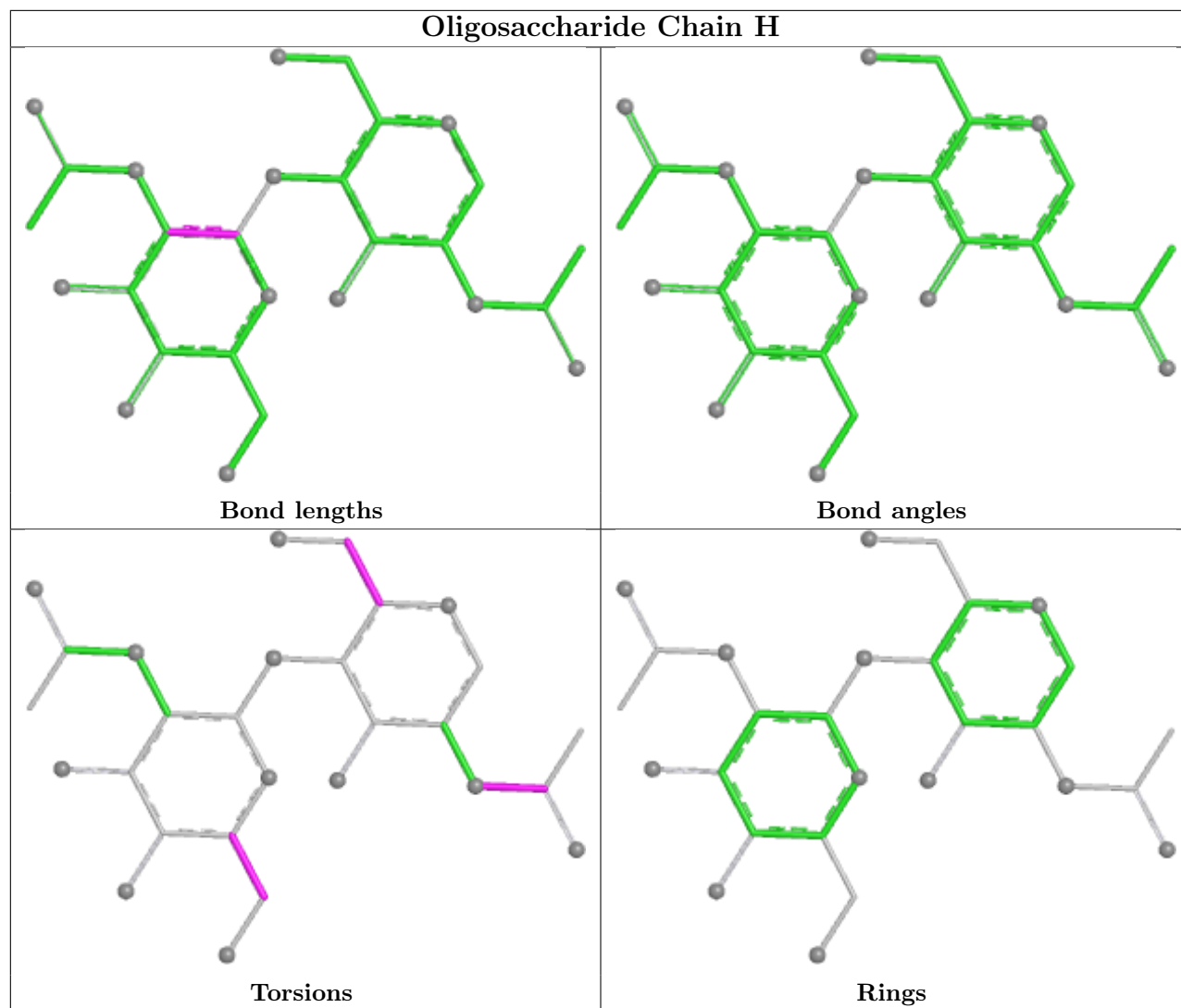


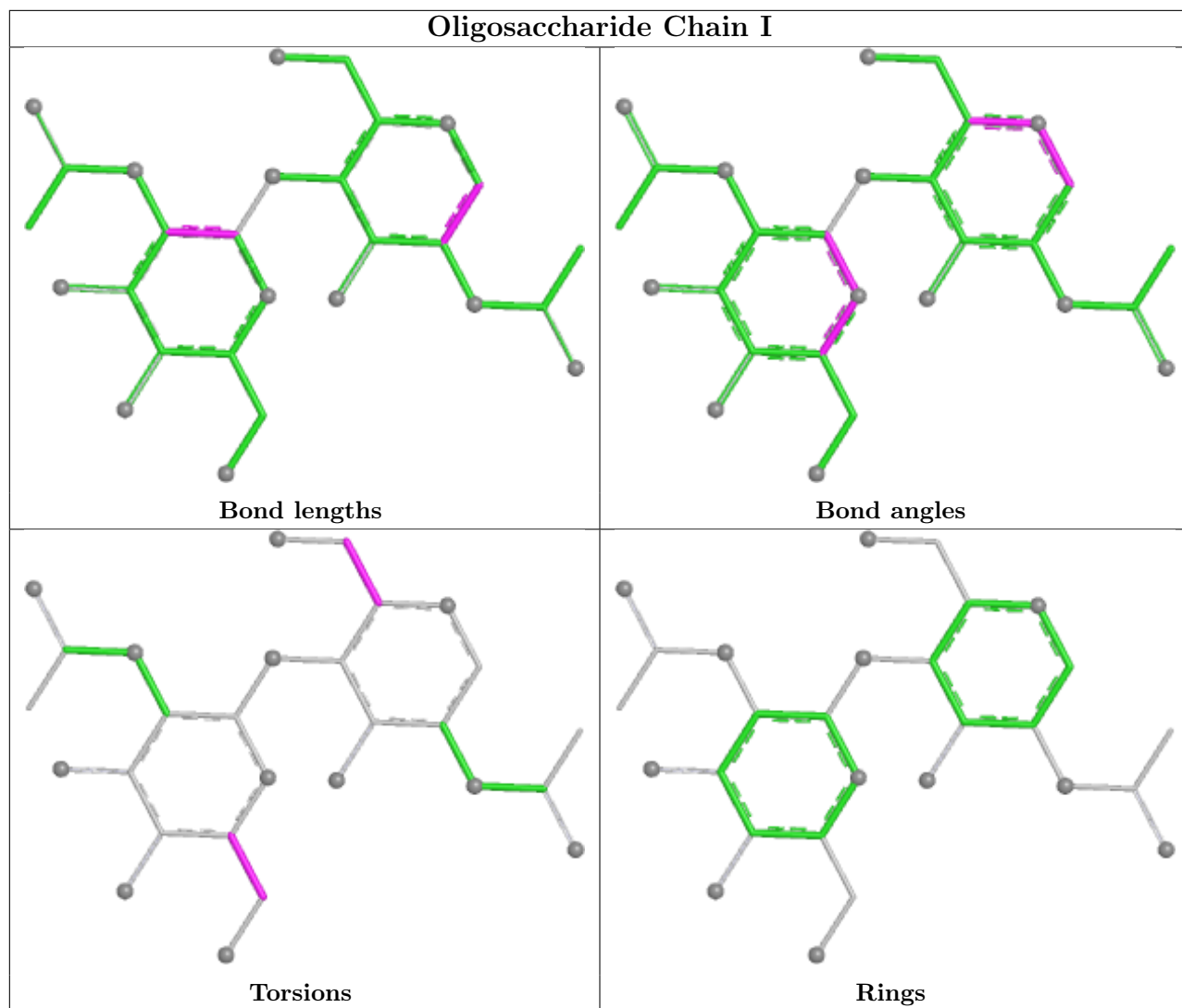












5.6 Ligand geometry [i](#)

24 ligands are modelled in this entry.

In the following table, the Counts columns list the number of bonds (or angles) for which Mogul statistics could be retrieved, the number of bonds (or angles) that are observed in the model and the number of bonds (or angles) that are defined in the Chemical Component Dictionary. The Link column lists molecule types, if any, to which the group is linked. The Z score for a bond length (or angle) is the number of standard deviations the observed value is removed from the expected value. A bond length (or angle) with $|Z| > 2$ is considered an outlier worth inspection. RMSZ is the root-mean-square of all Z scores of the bond lengths (or angles).

Mol	Type	Chain	Res	Link	Bond lengths			Bond angles		
					Counts	RMSZ	# $ Z > 2$	Counts	RMSZ	# $ Z > 2$
6	NAG	C	1007	1	14,14,15	0.27	0	17,19,21	0.46	0
5	GLU	C	1001	-	8,9,9	1.12	1 (12%)	8,11,11	1.17	1 (12%)
6	NAG	B	1006	1	14,14,15	0.28	0	17,19,21	0.47	0

Mol	Type	Chain	Res	Link	Bond lengths			Bond angles		
					Counts	RMSZ	# Z > 2	Counts	RMSZ	# Z > 2
6	NAG	C	1006	1	14,14,15	0.20	0	17,19,21	0.48	0
6	NAG	C	1002	1	14,14,15	1.29	1 (7%)	17,19,21	1.76	1 (5%)
6	NAG	D	1006	1	14,14,15	0.88	1 (7%)	17,19,21	0.68	0
6	NAG	A	1002	1	14,14,15	0.39	0	17,19,21	0.60	0
6	NAG	A	1004	1	14,14,15	0.25	0	17,19,21	0.57	0
6	NAG	D	1003	1	14,14,15	0.32	0	17,19,21	0.49	0
6	NAG	C	1003	1	14,14,15	0.54	0	17,19,21	0.56	0
6	NAG	C	1005	1	14,14,15	0.84	2 (14%)	17,19,21	0.81	1 (5%)
6	NAG	B	1005	1	14,14,15	1.27	1 (7%)	17,19,21	1.79	2 (11%)
6	NAG	B	1003	1	14,14,15	0.32	0	17,19,21	1.03	1 (5%)
6	NAG	D	1002	1	14,14,15	0.30	0	17,19,21	0.46	0
5	GLU	D	1001	-	8,9,9	1.13	1 (12%)	8,11,11	1.24	1 (12%)
5	GLU	B	1001	-	8,9,9	1.13	1 (12%)	8,11,11	1.37	1 (12%)
6	NAG	A	1005	1	14,14,15	0.38	0	17,19,21	0.66	0
6	NAG	B	1004	1	14,14,15	0.44	0	17,19,21	0.81	0
5	GLU	A	1001	-	8,9,9	1.07	1 (12%)	8,11,11	1.14	1 (12%)
6	NAG	C	1004	1	14,14,15	0.29	0	17,19,21	1.00	1 (5%)
6	NAG	D	1005	1	14,14,15	0.46	0	17,19,21	0.77	1 (5%)
6	NAG	A	1003	1	14,14,15	0.56	0	17,19,21	0.58	0
6	NAG	B	1002	1	14,14,15	0.39	0	17,19,21	0.45	0
6	NAG	D	1004	1	14,14,15	0.28	0	17,19,21	0.56	0

In the following table, the Chirals column lists the number of chiral outliers, the number of chiral centers analysed, the number of these observed in the model and the number defined in the Chemical Component Dictionary. Similar counts are reported in the Torsion and Rings columns. '-' means no outliers of that kind were identified.

Mol	Type	Chain	Res	Link	Chirals	Torsions	Rings
6	NAG	C	1007	1	-	2/6/23/26	0/1/1/1
5	GLU	C	1001	-	-	3/9/9/9	-
6	NAG	B	1006	1	-	4/6/23/26	0/1/1/1
6	NAG	C	1006	1	-	0/6/23/26	0/1/1/1
6	NAG	C	1002	1	-	2/6/23/26	0/1/1/1
6	NAG	D	1006	1	-	4/6/23/26	0/1/1/1
6	NAG	A	1002	1	-	5/6/23/26	0/1/1/1
6	NAG	A	1004	1	-	4/6/23/26	0/1/1/1
6	NAG	D	1003	1	-	3/6/23/26	0/1/1/1
6	NAG	C	1003	1	-	4/6/23/26	0/1/1/1

Continued on next page...

Continued from previous page...

Mol	Type	Chain	Res	Link	Chirals	Torsions	Rings
6	NAG	C	1005	1	-	4/6/23/26	0/1/1/1
6	NAG	B	1005	1	-	4/6/23/26	0/1/1/1
6	NAG	B	1003	1	-	3/6/23/26	0/1/1/1
6	NAG	D	1002	1	-	2/6/23/26	0/1/1/1
5	GLU	D	1001	-	-	0/9/9/9	-
5	GLU	B	1001	-	-	2/9/9/9	-
6	NAG	A	1005	1	-	4/6/23/26	0/1/1/1
6	NAG	B	1004	1	-	0/6/23/26	0/1/1/1
5	GLU	A	1001	-	-	2/9/9/9	-
6	NAG	C	1004	1	-	4/6/23/26	0/1/1/1
6	NAG	D	1005	1	-	2/6/23/26	0/1/1/1
6	NAG	A	1003	1	-	2/6/23/26	0/1/1/1
6	NAG	B	1002	1	-	2/6/23/26	0/1/1/1
6	NAG	D	1004	1	-	4/6/23/26	0/1/1/1

All (9) bond length outliers are listed below:

Mol	Chain	Res	Type	Atoms	Z	Observed(Å)	Ideal(Å)
6	C	1002	NAG	O5-C1	4.70	1.51	1.43
6	B	1005	NAG	O5-C1	4.28	1.50	1.43
6	D	1006	NAG	O5-C1	2.62	1.48	1.43
5	B	1001	GLU	OXT-C	-2.35	1.23	1.30
5	C	1001	GLU	OXT-C	-2.33	1.23	1.30
5	D	1001	GLU	OXT-C	-2.33	1.23	1.30
6	C	1005	NAG	O5-C1	2.24	1.47	1.43
5	A	1001	GLU	OXT-C	-2.21	1.23	1.30
6	C	1005	NAG	C1-C2	2.06	1.55	1.52

All (11) bond angle outliers are listed below:

Mol	Chain	Res	Type	Atoms	Z	Observed(°)	Ideal(°)
6	C	1002	NAG	C1-O5-C5	7.00	121.56	112.19
6	B	1005	NAG	C1-O5-C5	6.10	120.37	112.19
6	B	1003	NAG	C2-N2-C7	3.45	127.53	122.90
5	B	1001	GLU	OXT-C-O	-3.29	116.63	124.08
6	C	1004	NAG	C2-N2-C7	3.25	127.26	122.90
6	B	1005	NAG	C2-N2-C7	3.24	127.25	122.90
5	D	1001	GLU	OXT-C-O	-2.72	117.92	124.08
6	D	1005	NAG	C1-O5-C5	2.55	115.60	112.19

Continued on next page...

Continued from previous page...

Mol	Chain	Res	Type	Atoms	Z	Observed(°)	Ideal(°)
6	C	1005	NAG	C1-O5-C5	2.48	115.51	112.19
5	C	1001	GLU	OXT-C-O	-2.42	118.59	124.08
5	A	1001	GLU	OXT-C-O	-2.35	118.76	124.08

There are no chirality outliers.

All (66) torsion outliers are listed below:

Mol	Chain	Res	Type	Atoms
6	A	1002	NAG	C8-C7-N2-C2
6	A	1002	NAG	O7-C7-N2-C2
6	D	1002	NAG	C4-C5-C6-O6
6	C	1007	NAG	O5-C5-C6-O6
6	D	1004	NAG	O5-C5-C6-O6
6	A	1005	NAG	O5-C5-C6-O6
6	C	1004	NAG	O5-C5-C6-O6
6	C	1007	NAG	C4-C5-C6-O6
6	C	1002	NAG	O5-C5-C6-O6
6	C	1003	NAG	O5-C5-C6-O6
6	D	1006	NAG	O5-C5-C6-O6
6	D	1002	NAG	O5-C5-C6-O6
6	C	1005	NAG	O5-C5-C6-O6
6	C	1004	NAG	C4-C5-C6-O6
6	C	1003	NAG	C4-C5-C6-O6
6	A	1005	NAG	C4-C5-C6-O6
6	D	1004	NAG	C4-C5-C6-O6
6	A	1004	NAG	O5-C5-C6-O6
6	C	1005	NAG	C4-C5-C6-O6
6	B	1005	NAG	O5-C5-C6-O6
6	A	1004	NAG	C8-C7-N2-C2
6	A	1004	NAG	O7-C7-N2-C2
6	A	1005	NAG	C8-C7-N2-C2
6	A	1005	NAG	O7-C7-N2-C2
6	B	1006	NAG	C8-C7-N2-C2
6	B	1006	NAG	O7-C7-N2-C2
6	C	1003	NAG	C8-C7-N2-C2
6	C	1003	NAG	O7-C7-N2-C2
6	C	1005	NAG	C8-C7-N2-C2
6	C	1005	NAG	O7-C7-N2-C2
6	D	1003	NAG	C8-C7-N2-C2
6	D	1003	NAG	O7-C7-N2-C2
6	D	1004	NAG	C8-C7-N2-C2
6	D	1004	NAG	O7-C7-N2-C2

Continued on next page...

Continued from previous page...

Mol	Chain	Res	Type	Atoms
6	D	1005	NAG	C8-C7-N2-C2
6	D	1005	NAG	O7-C7-N2-C2
6	D	1006	NAG	C8-C7-N2-C2
6	D	1006	NAG	O7-C7-N2-C2
6	A	1002	NAG	O5-C5-C6-O6
6	B	1006	NAG	O5-C5-C6-O6
6	A	1004	NAG	C4-C5-C6-O6
6	B	1002	NAG	C4-C5-C6-O6
6	B	1002	NAG	O5-C5-C6-O6
6	C	1002	NAG	C4-C5-C6-O6
6	A	1003	NAG	O5-C5-C6-O6
6	A	1002	NAG	C3-C2-N2-C7
6	B	1006	NAG	C4-C5-C6-O6
6	B	1005	NAG	C4-C5-C6-O6
6	A	1002	NAG	C4-C5-C6-O6
6	D	1006	NAG	C4-C5-C6-O6
6	B	1003	NAG	C1-C2-N2-C7
6	C	1004	NAG	C1-C2-N2-C7
6	B	1003	NAG	C4-C5-C6-O6
5	C	1001	GLU	OXT-C-CA-CB
6	B	1005	NAG	C1-C2-N2-C7
5	C	1001	GLU	O-C-CA-CB
6	B	1003	NAG	C3-C2-N2-C7
6	B	1005	NAG	C3-C2-N2-C7
6	C	1004	NAG	C3-C2-N2-C7
6	D	1003	NAG	O5-C5-C6-O6
5	C	1001	GLU	OE1-CD-CG-CB
5	B	1001	GLU	OXT-C-CA-N
5	A	1001	GLU	O-C-CA-CB
6	A	1003	NAG	C4-C5-C6-O6
5	A	1001	GLU	O-C-CA-N
5	B	1001	GLU	O-C-CA-N

There are no ring outliers.

4 monomers are involved in 7 short contacts:

Mol	Chain	Res	Type	Clashes	Symm-Clashes
5	C	1001	GLU	1	0
6	A	1004	NAG	1	0
5	B	1001	GLU	2	0
5	A	1001	GLU	3	0

5.7 Other polymers [i](#)

There are no such residues in this entry.

5.8 Polymer linkage issues [i](#)

There are no chain breaks in this entry.

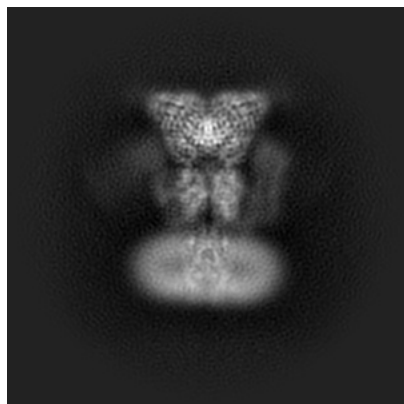
6 Map visualisation [i](#)

This section contains visualisations of the EMDB entry EMD-44132. These allow visual inspection of the internal detail of the map and identification of artifacts.

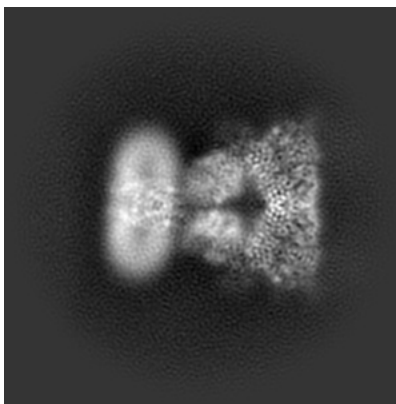
Images derived from a raw map, generated by summing the deposited half-maps, are presented below the corresponding image components of the primary map to allow further visual inspection and comparison with those of the primary map.

6.1 Orthogonal projections [i](#)

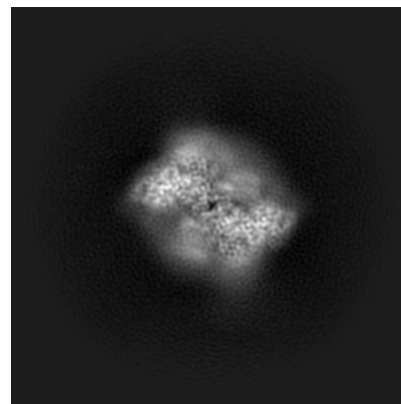
6.1.1 Primary map



X

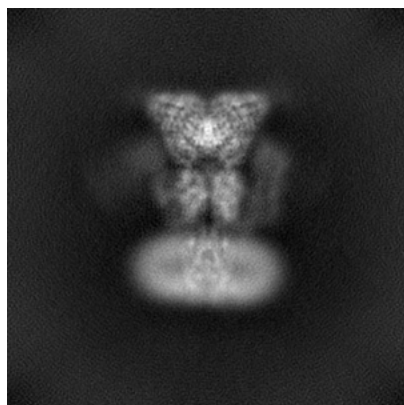


Y

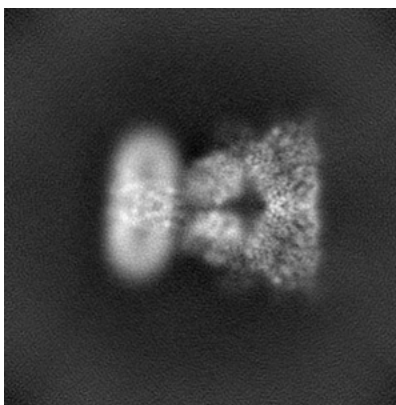


Z

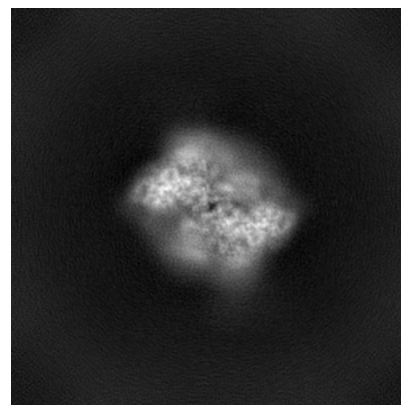
6.1.2 Raw map



X



Y

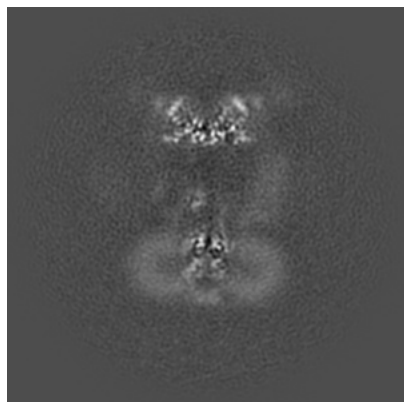


Z

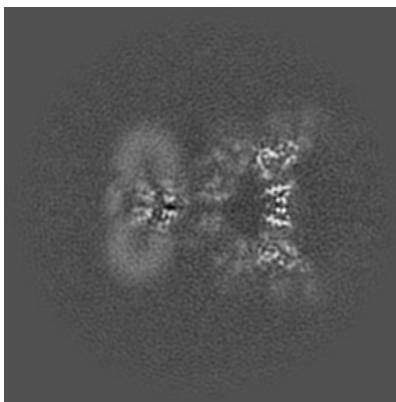
The images above show the map projected in three orthogonal directions.

6.2 Central slices [i](#)

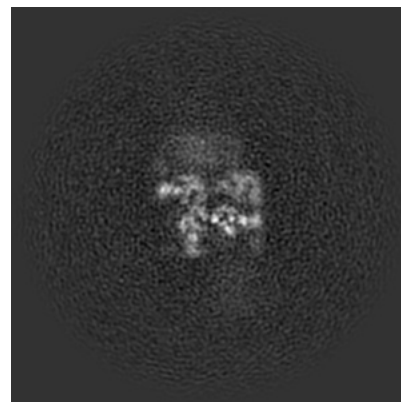
6.2.1 Primary map



X Index: 128

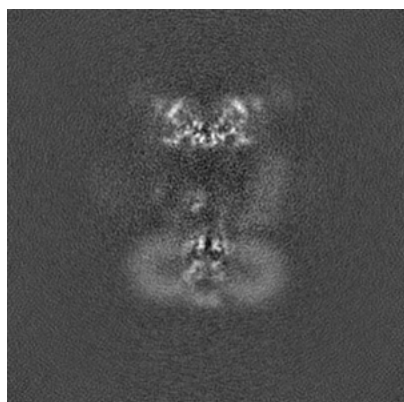


Y Index: 128

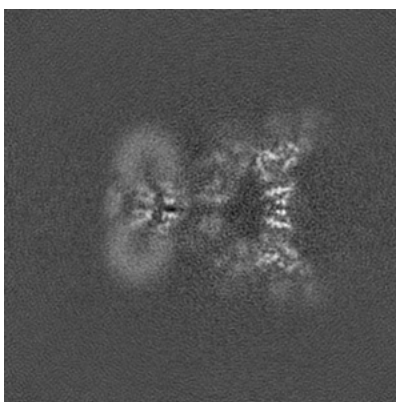


Z Index: 128

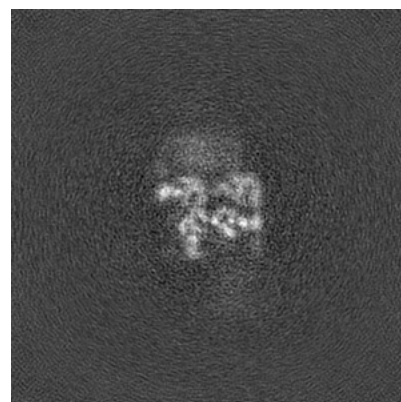
6.2.2 Raw map



X Index: 128



Y Index: 128

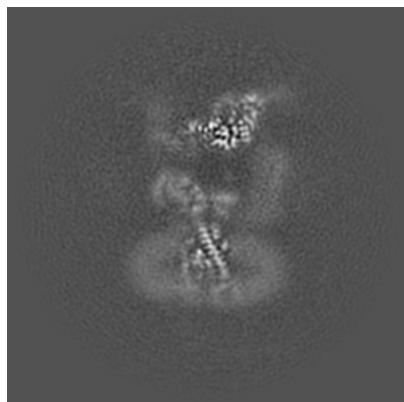


Z Index: 128

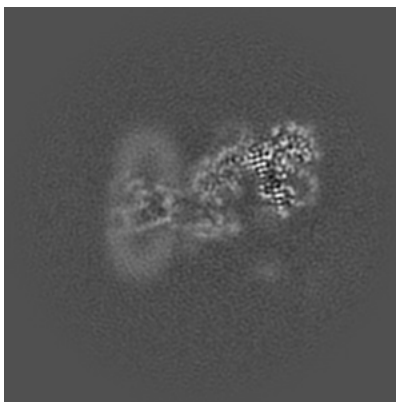
The images above show central slices of the map in three orthogonal directions.

6.3 Largest variance slices [i](#)

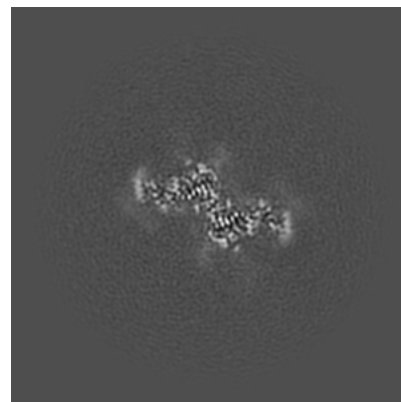
6.3.1 Primary map



X Index: 123

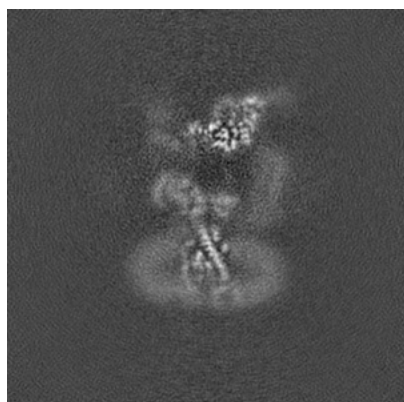


Y Index: 117

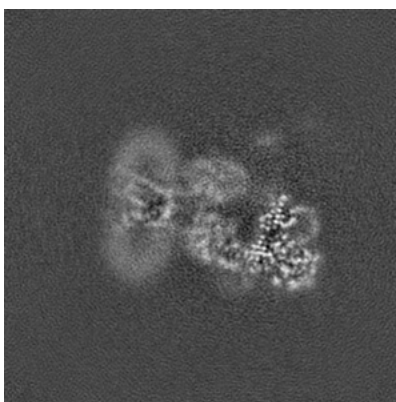


Z Index: 174

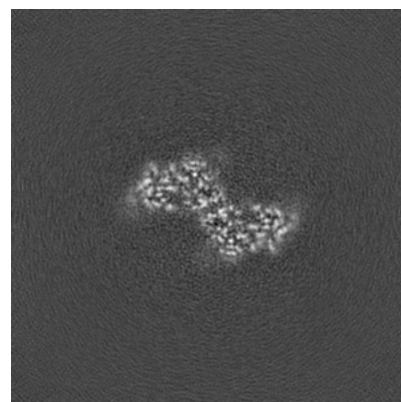
6.3.2 Raw map



X Index: 123



Y Index: 139



Z Index: 181

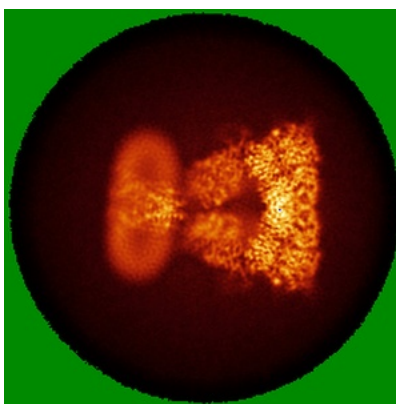
The images above show the largest variance slices of the map in three orthogonal directions.

6.4 Orthogonal standard-deviation projections (False-color) [i](#)

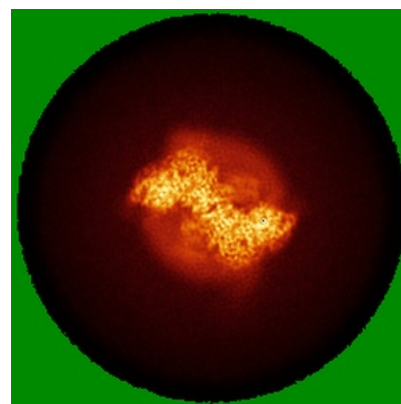
6.4.1 Primary map



X

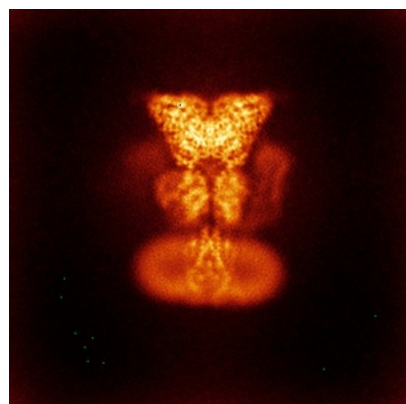


Y

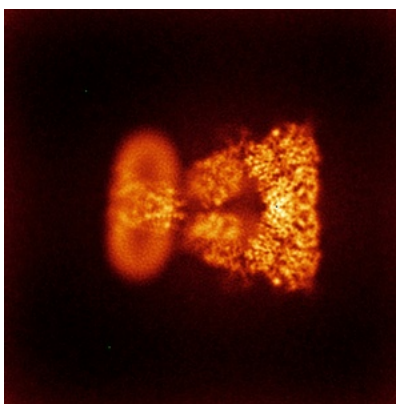


Z

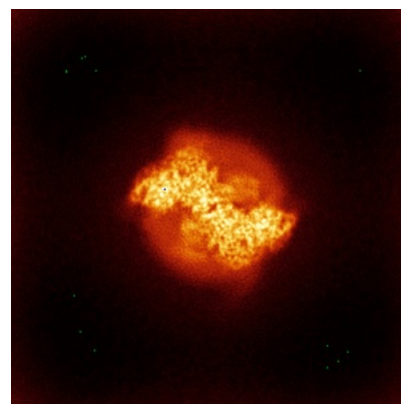
6.4.2 Raw map



X



Y



Z

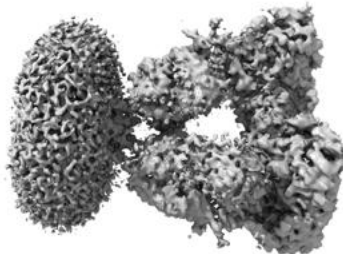
The images above show the map standard deviation projections with false color in three orthogonal directions. Minimum values are shown in green, max in blue, and dark to light orange shades represent small to large values respectively.

6.5 Orthogonal surface views [i](#)

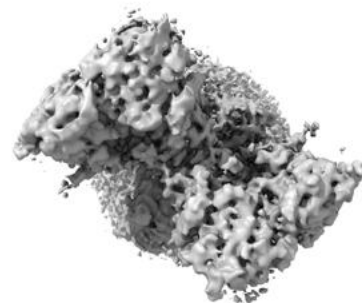
6.5.1 Primary map



X



Y



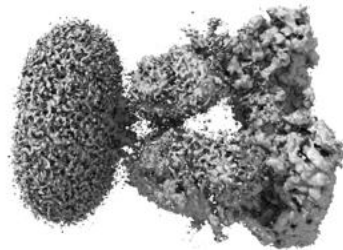
Z

The images above show the 3D surface view of the map at the recommended contour level 0.0835. These images, in conjunction with the slice images, may facilitate assessment of whether an appropriate contour level has been provided.

6.5.2 Raw map



X



Y



Z

These images show the 3D surface of the raw map. The raw map's contour level was selected so that its surface encloses the same volume as the primary map does at its recommended contour level.

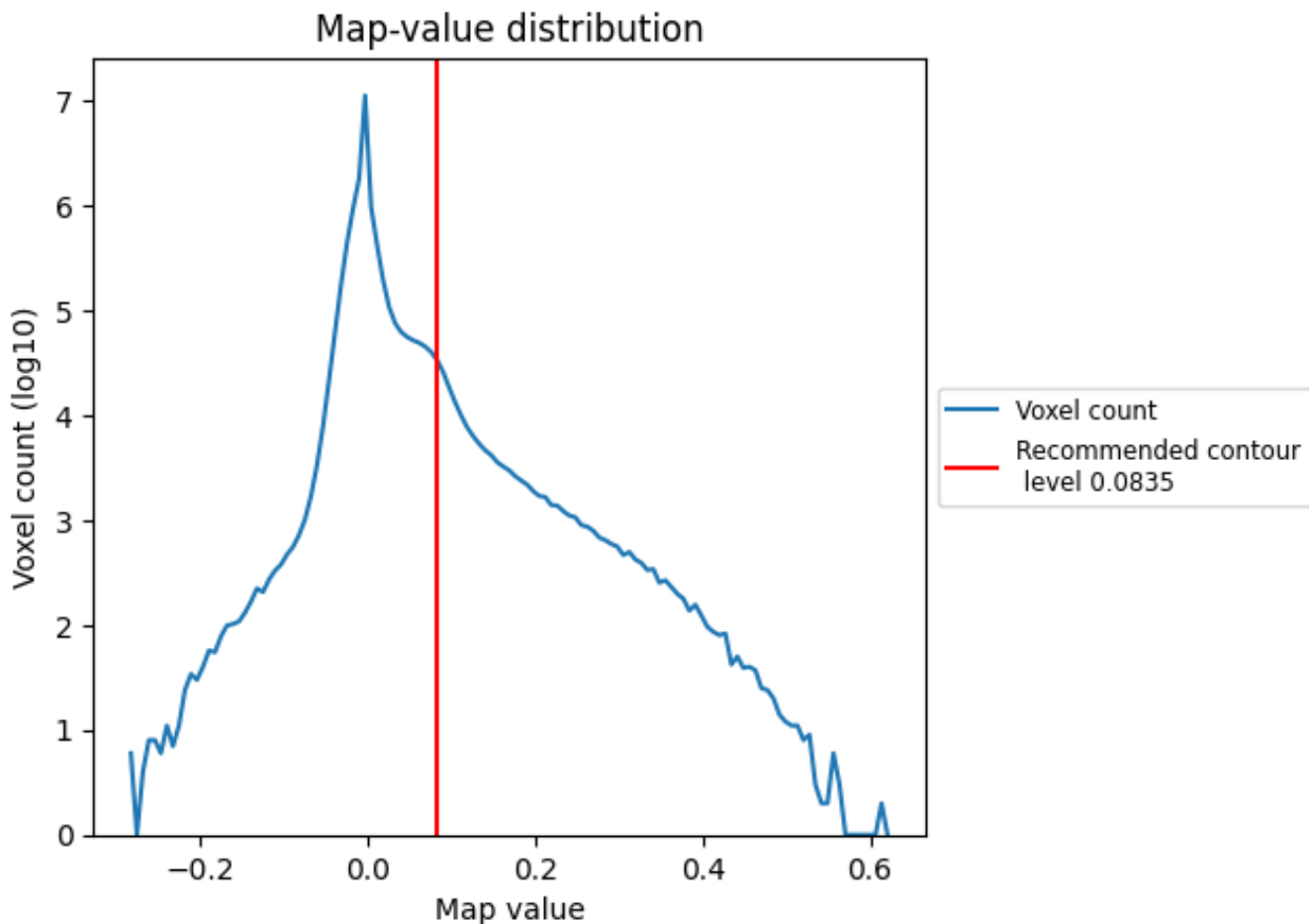
6.6 Mask visualisation [i](#)

This section was not generated. No masks/segmentation were deposited.

7 Map analysis [i](#)

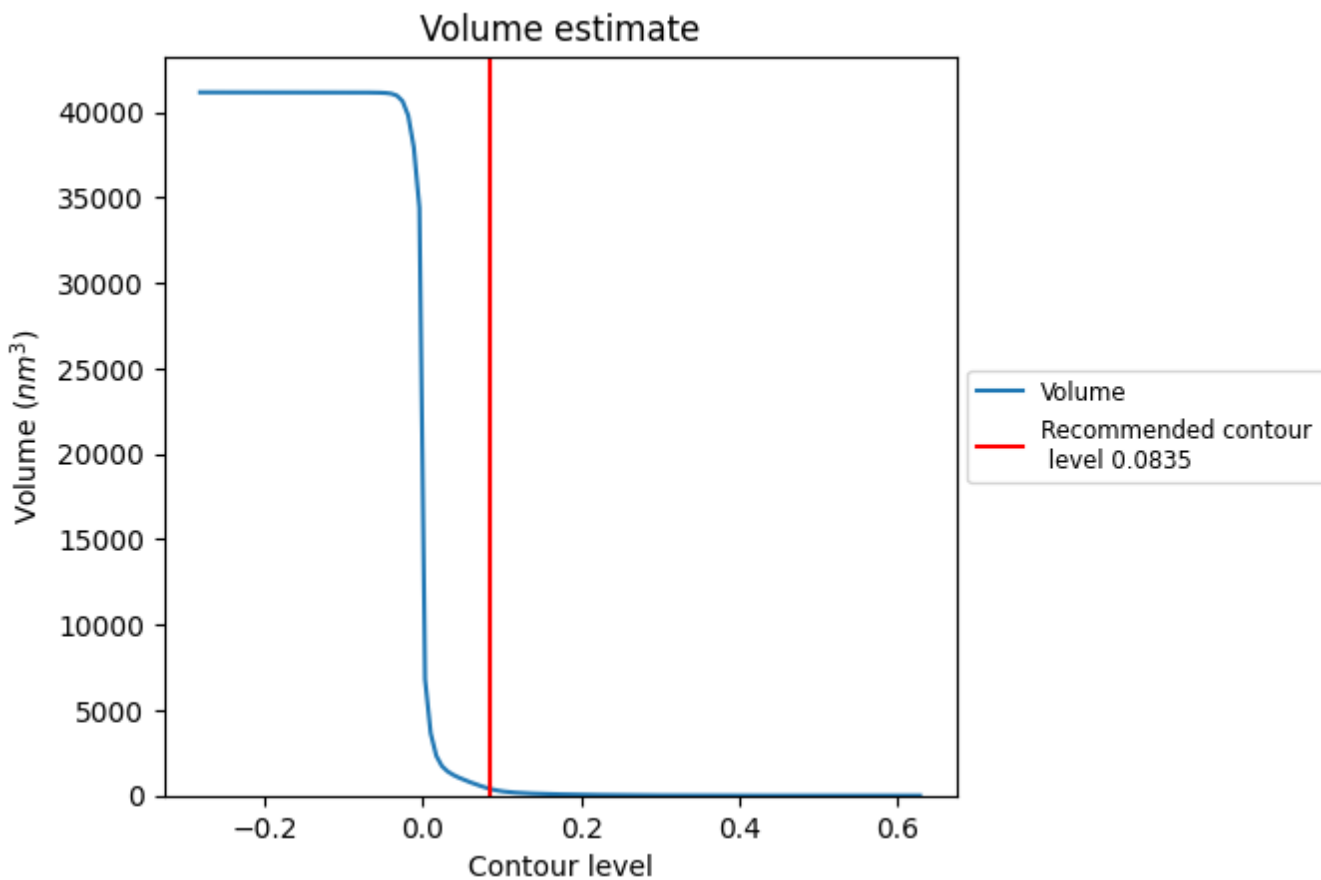
This section contains the results of statistical analysis of the map.

7.1 Map-value distribution [i](#)



The map-value distribution is plotted in 128 intervals along the x-axis. The y-axis is logarithmic. A spike in this graph at zero usually indicates that the volume has been masked.

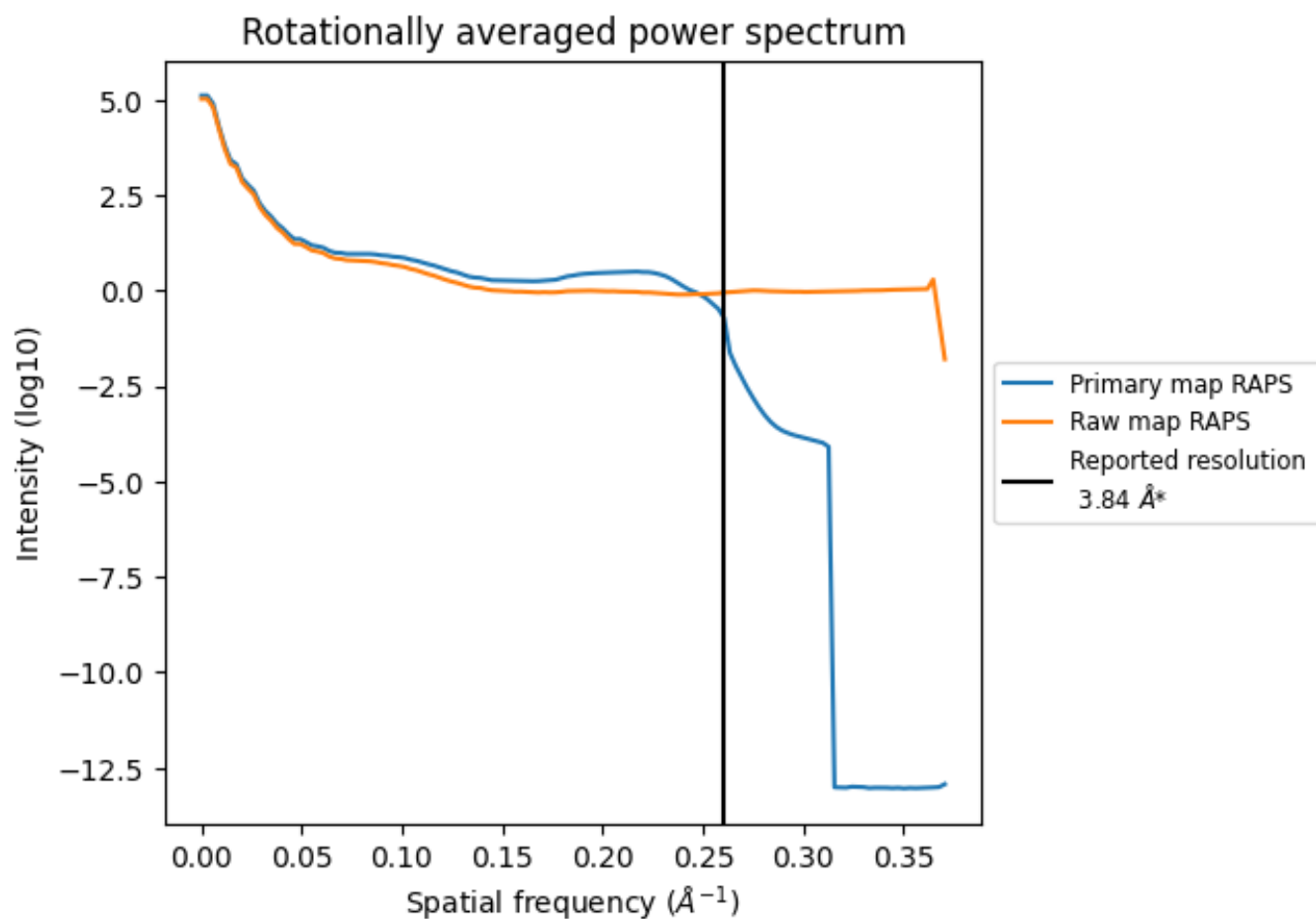
7.2 Volume estimate [i](#)



The volume at the recommended contour level is 412 nm^3 ; this corresponds to an approximate mass of 372 kDa.

The volume estimate graph shows how the enclosed volume varies with the contour level. The recommended contour level is shown as a vertical line and the intersection between the line and the curve gives the volume of the enclosed surface at the given level.

7.3 Rotationally averaged power spectrum [i](#)

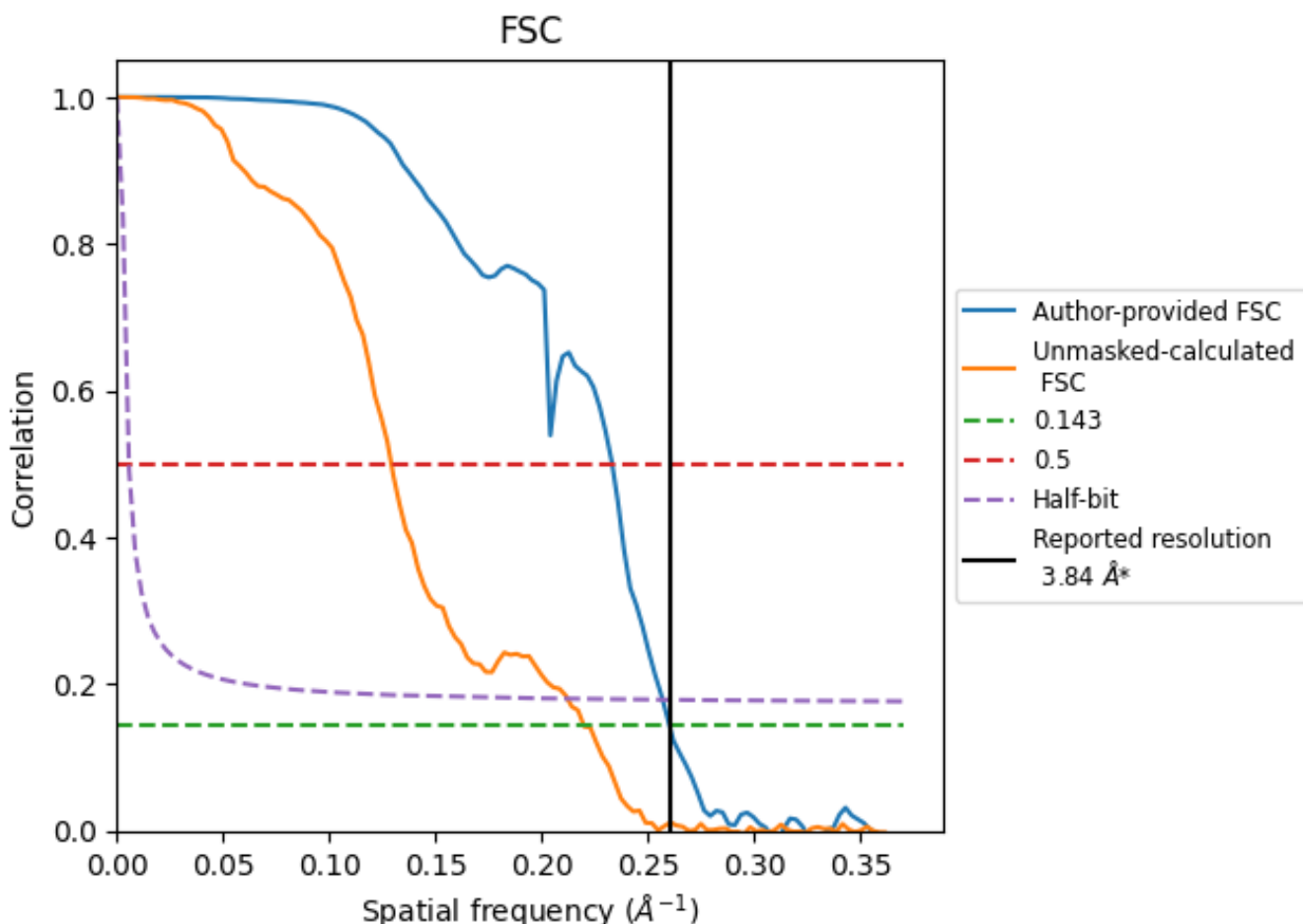


*Reported resolution corresponds to spatial frequency of 0.260 Å⁻¹

8 Fourier-Shell correlation [i](#)

Fourier-Shell Correlation (FSC) is the most commonly used method to estimate the resolution of single-particle and subtomogram-averaged maps. The shape of the curve depends on the imposed symmetry, mask and whether or not the two 3D reconstructions used were processed from a common reference. The reported resolution is shown as a black line. A curve is displayed for the half-bit criterion in addition to lines showing the 0.143 gold standard cut-off and 0.5 cut-off.

8.1 FSC [i](#)



*Reported resolution corresponds to spatial frequency of 0.260 Å⁻¹

8.2 Resolution estimates [i](#)

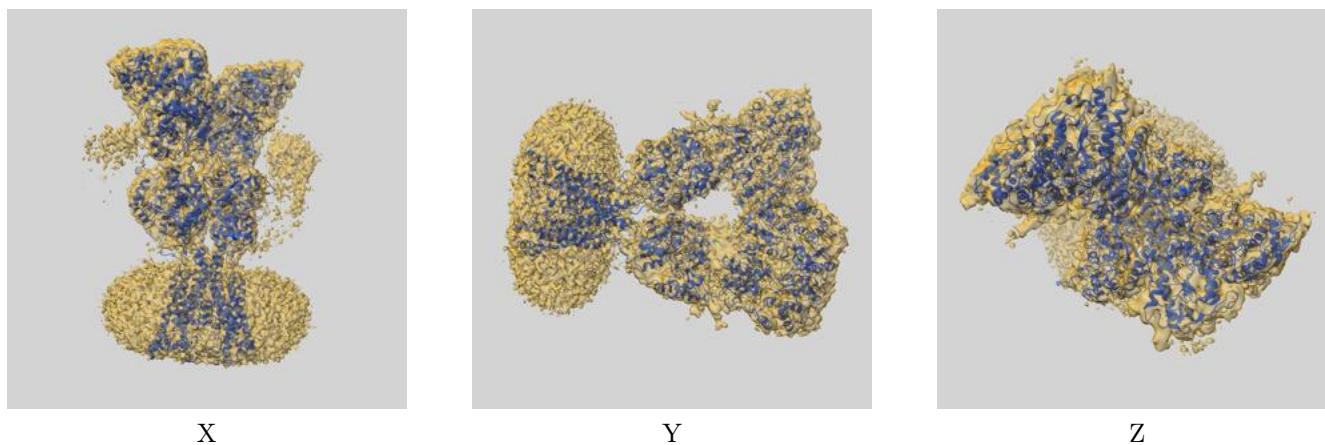
Resolution estimate (Å)	Estimation criterion (FSC cut-off)		
	0.143	0.5	Half-bit
Reported by author	3.84	-	-
Author-provided FSC curve	3.84	4.29	3.89
Unmasked-calculated*	4.55	7.73	4.71

*Resolution estimate based on FSC curve calculated by comparison of deposited half-maps. The value from deposited half-maps intersecting FSC 0.143 CUT-OFF 4.55 differs from the reported value 3.84 by more than 10 %

9 Map-model fit [i](#)

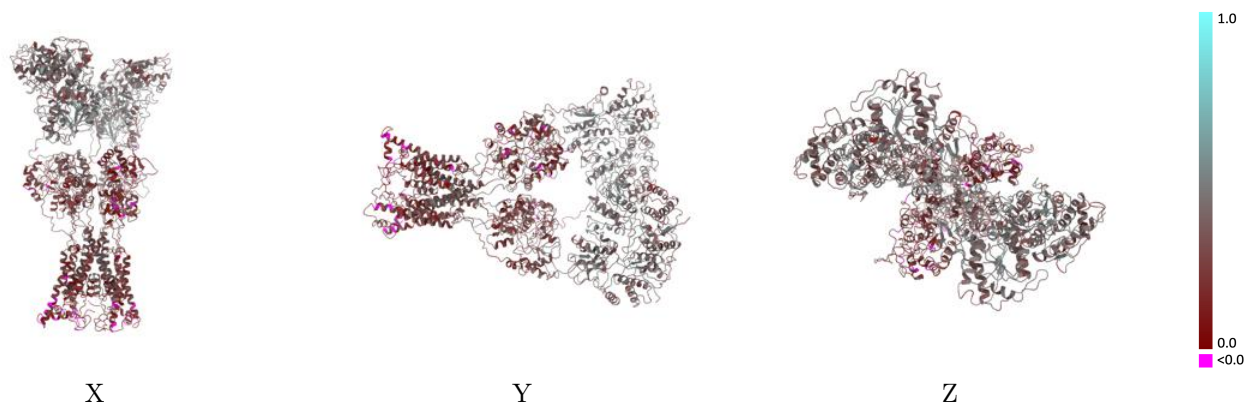
This section contains information regarding the fit between EMDB map EMD-44132 and PDB model 9B39. Per-residue inclusion information can be found in section 3 on page 9.

9.1 Map-model overlay [i](#)



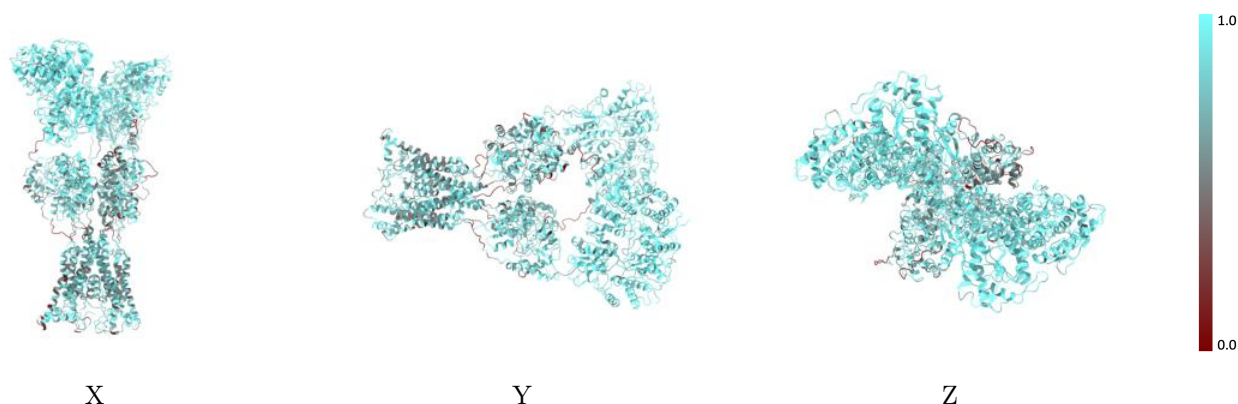
The images above show the 3D surface view of the map at the recommended contour level 0.0835 at 50% transparency in yellow overlaid with a ribbon representation of the model coloured in blue. These images allow for the visual assessment of the quality of fit between the atomic model and the map.

9.2 Q-score mapped to coordinate model [\(i\)](#)



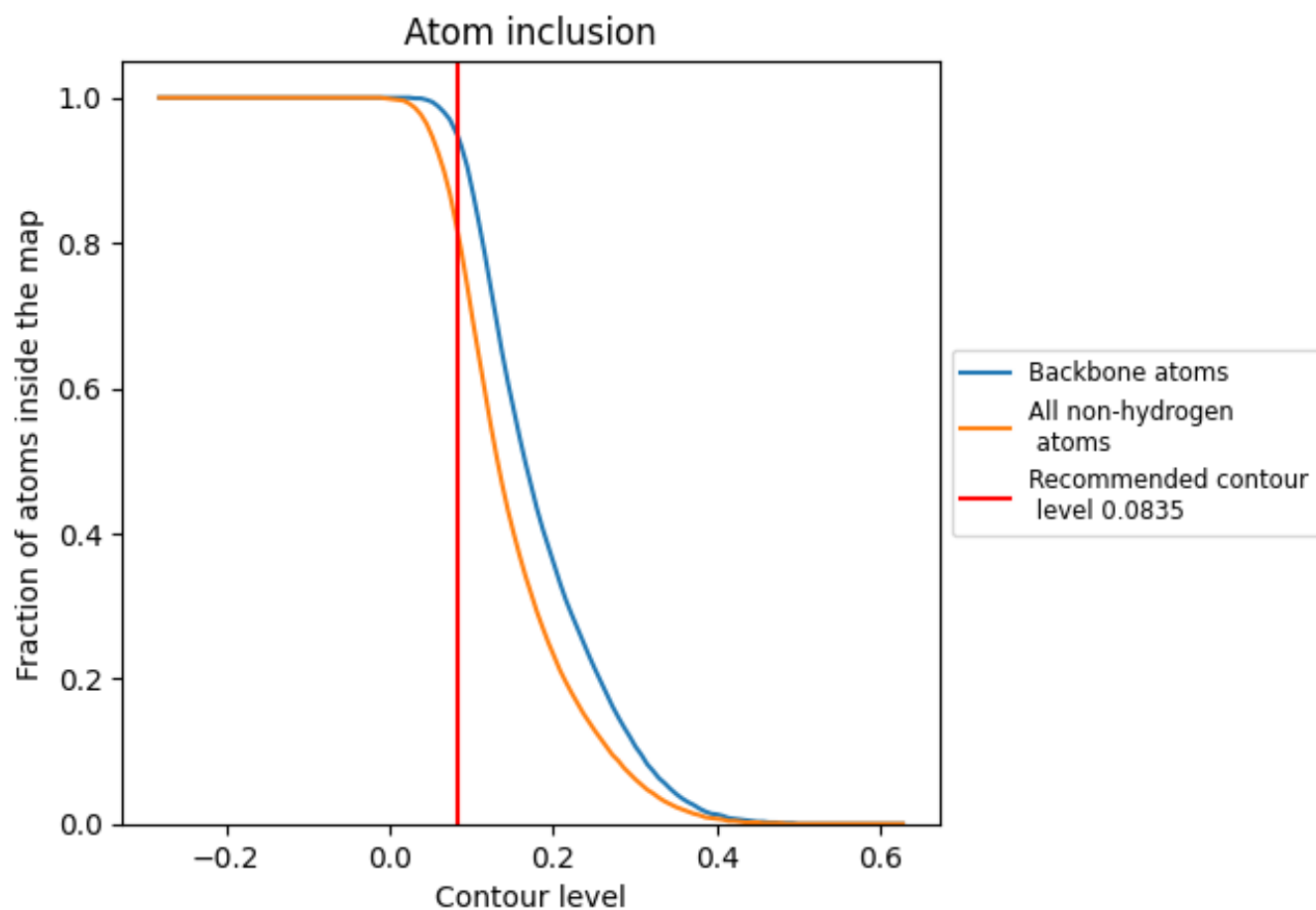
The images above show the model with each residue coloured according to its Q-score. This shows their resolvability in the map with higher Q-score values reflecting better resolvability. Please note: Q-score is calculating the resolvability of atoms, and thus high values are only expected at resolutions at which atoms can be resolved. Low Q-score values may therefore be expected for many entries.

9.3 Atom inclusion mapped to coordinate model [\(i\)](#)



The images above show the model with each residue coloured according to its atom inclusion. This shows to what extent they are inside the map at the recommended contour level (0.0835).





























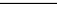
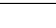
9.4 Atom inclusion [i](#)



At the recommended contour level, 95% of all backbone atoms, 81% of all non-hydrogen atoms, are inside the map.

9.5 Map-model fit summary

The table lists the average atom inclusion at the recommended contour level (0.0835) and Q-score for the entire model and for each chain.

Chain	Atom inclusion	Q-score
All	 0.8140	 0.3390
A	 0.8380	 0.3450
B	 0.7760	 0.3200
C	 0.8290	 0.3570
D	 0.8140	 0.3320
E	 0.7540	 0.4100
F	 0.8850	 0.4390
G	 0.7440	 0.3940
H	 0.8570	 0.3530
I	 0.8930	 0.3610
J	 0.7540	 0.4090
K	 0.8530	 0.4260
L	 0.7700	 0.3320
M	 0.7950	 0.3810
N	 0.7440	 0.4310

