



# Full wwPDB X-ray Structure Validation Report ⓘ

Jan 7, 2025 – 03:50 PM JST

PDB ID : 8XS9  
Title : Crystal structure of the DNA-bound AHR-ARNT heterodimer in complex with beta-Naphthoflavone  
Authors : Diao, X.; Shang, Q.; Wu, D.  
Deposited on : 2024-01-09  
Resolution : 2.80 Å(reported)

This is a Full wwPDB X-ray Structure Validation Report for a publicly released PDB entry.

We welcome your comments at [validation@mail.wwpdb.org](mailto:validation@mail.wwpdb.org)

A user guide is available at

<https://www.wwpdb.org/validation/2017/XrayValidationReportHelp>

with specific help available everywhere you see the ⓘ symbol.

The types of validation reports are described at

<http://www.wwpdb.org/validation/2017/FAQs#types>.

---

The following versions of software and data (see [references ⓘ](#)) were used in the production of this report:

MolProbity : 4.02b-467  
Mogul : 1.8.5 (274361), CSD as541be (2020)  
Xtrriage (Phenix) : 1.21  
EDS : 3.0  
buster-report : 1.1.7 (2018)  
Percentile statistics : 20231227.v01 (using entries in the PDB archive December 27th 2023)  
CCP4 : 9.0.004 (Gargrove)  
Density-Fitness : 1.0.11  
Ideal geometry (proteins) : Engh & Huber (2001)  
Ideal geometry (DNA, RNA) : Parkinson et al. (1996)  
Validation Pipeline (wwPDB-VP) : 2.40

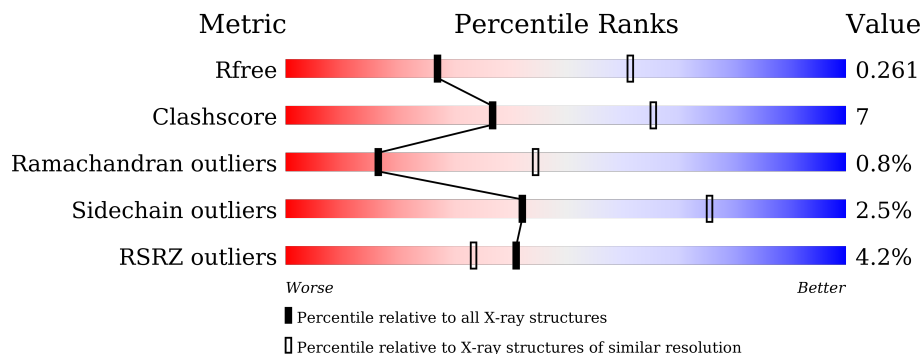
# 1 Overall quality at a glance

The following experimental techniques were used to determine the structure:

*X-RAY DIFFRACTION*

The reported resolution of this entry is 2.80 Å.

Percentile scores (ranging between 0-100) for global validation metrics of the entry are shown in the following graphic. The table shows the number of entries on which the scores are based.



Metric	Whole archive (#Entries)	Similar resolution (#Entries, resolution range(Å))
$R_{free}$	164625	3657 (2.80-2.80)
Clashscore	180529	4123 (2.80-2.80)
Ramachandran outliers	177936	4071 (2.80-2.80)
Sidechain outliers	177891	4073 (2.80-2.80)
RSRZ outliers	164620	3659 (2.80-2.80)

The table below summarises the geometric issues observed across the polymeric chains and their fit to the electron density. The red, orange, yellow and green segments of the lower bar indicate the fraction of residues that contain outliers for  $\geq 3$ , 2, 1 and 0 types of geometric quality criteria respectively. A grey segment represents the fraction of residues that are not modelled. The numeric value for each fraction is indicated below the corresponding segment, with a dot representing fractions  $\leq 5\%$ . The upper red bar (where present) indicates the fraction of residues that have poor fit to the electron density. The numeric value is given above the bar.

Mol	Chain	Length	Quality of chain
1	A	382	
2	B	395	
3	C	21	
4	D	21	

The following table lists non-polymeric compounds, carbohydrate monomers and non-standard residues in protein, DNA, RNA chains that are outliers for geometric or electron-density-fit crite-

ria:

Mol	Type	Chain	Res	Chirality	Geometry	Clashes	Electron density
5	DTT	A	501	-	X	-	-

## 2 Entry composition [i](#)

There are 7 unique types of molecules in this entry. The entry contains 5962 atoms, of which 0 are hydrogens and 0 are deuteriums.

In the tables below, the ZeroOcc column contains the number of atoms modelled with zero occupancy, the AltConf column contains the number of residues with at least one atom in alternate conformation and the Trace column contains the number of residues modelled with at most 2 atoms.

- Molecule 1 is a protein called Aryl hydrocarbon receptor nuclear translocator.

Mol	Chain	Residues	Atoms					ZeroOcc	AltConf	Trace
			Total	C	N	O	S			
1	A	290	2367	1493	417	440	17	0	2	0

There is a discrepancy between the modelled and reference sequences:

Chain	Residue	Modelled	Actual	Comment	Reference
A	84	MET	-	initiating methionine	UNP P27540

- Molecule 2 is a protein called Aryl hydrocarbon receptor.

Mol	Chain	Residues	Atoms					ZeroOcc	AltConf	Trace
			Total	C	N	O	S			
2	B	328	2672	1712	472	474	14	0	0	0

There are 7 discrepancies between the modelled and reference sequences:

Chain	Residue	Modelled	Actual	Comment	Reference
B	25	MET	-	initiating methionine	UNP I3LF82
B	414	HIS	-	expression tag	UNP I3LF82
B	415	HIS	-	expression tag	UNP I3LF82
B	416	HIS	-	expression tag	UNP I3LF82
B	417	HIS	-	expression tag	UNP I3LF82
B	418	HIS	-	expression tag	UNP I3LF82
B	419	HIS	-	expression tag	UNP I3LF82

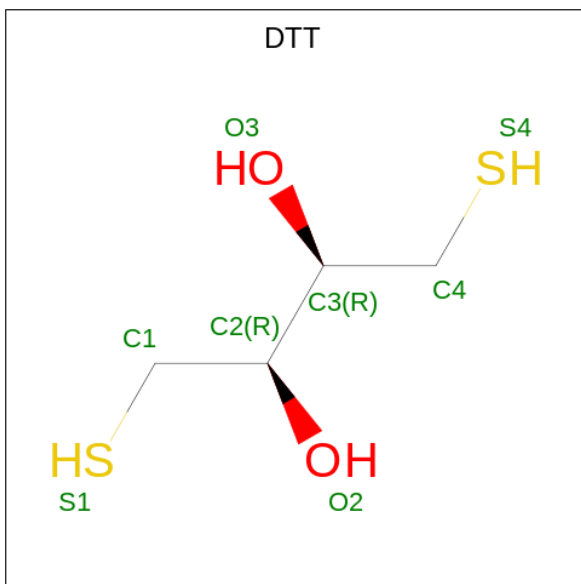
- Molecule 3 is a DNA chain called DNAF.

Mol	Chain	Residues	Atoms					ZeroOcc	AltConf	Trace
			Total	C	N	O	P			
3	C	21	430	204	84	122	20	0	0	0

- Molecule 4 is a DNA chain called DNAR.

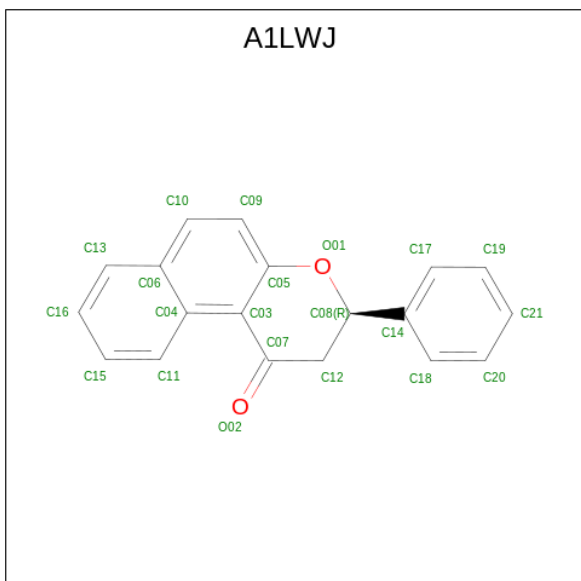
Mol	Chain	Residues	Atoms					ZeroOcc	AltConf	Trace
			Total	C	N	O	P			
4	D	21	425	203	76	126	20	0	0	0

- Molecule 5 is 2,3-DIHYDROXY-1,4-DITHIOBUTANE (three-letter code: DTT) (formula:  $C_4H_{10}O_2S_2$ ).



Mol	Chain	Residues	Atoms				ZeroOcc	AltConf
			Total	C	O	S		
5	A	1	8	4	2	2	0	0

- Molecule 6 is (3R)-3-phenyl-2,3-dihydrobenzo[f]chromen-1-one (three-letter code: A1LWJ) (formula:  $C_{19}H_{14}O_2$ ) (labeled as "Ligand of Interest" by depositor).



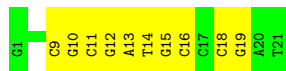
Mol	Chain	Residues	Atoms			ZeroOcc	AltConf
6	B	1	Total	C	O	0	0
			21	19	2		

- Molecule 7 is water.

Mol	Chain	Residues	Atoms		ZeroOcc	AltConf
7	A	17	Total	O	0	0
			17	17		
7	B	22	Total	O	0	0
			22	22		



## ● Molecule 4: DNAR

Chain D:  52% 48%



## 4 Data and refinement statistics

Property	Value	Source
Space group	P 1 21 1	Depositor
Cell constants a, b, c, $\alpha$ , $\beta$ , $\gamma$	68.00Å 98.51Å 80.00Å 90.00° 90.66° 90.00°	Depositor
Resolution (Å)	39.89 – 2.80 39.89 – 2.80	Depositor EDS
% Data completeness (in resolution range)	93.9 (39.89-2.80) 89.8 (39.89-2.80)	Depositor EDS
$R_{merge}$	0.14	Depositor
$R_{sym}$	(Not available)	Depositor
$\langle I/\sigma(I) \rangle$ <sup>1</sup>	2.91 (at 2.81Å)	Xtrriage
Refinement program	PHENIX (1.14_3260: ???)	Depositor
R, $R_{free}$	0.203 , 0.264 0.204 , 0.261	Depositor DCC
$R_{free}$ test set	22515 reflections (8.19%)	wwPDB-VP
Wilson B-factor (Å <sup>2</sup> )	41.7	Xtrriage
Anisotropy	0.085	Xtrriage
Bulk solvent $k_{sol}$ (e/Å <sup>3</sup> ), $B_{sol}$ (Å <sup>2</sup> )	0.33 , 45.5	EDS
L-test for twinning <sup>2</sup>	$\langle  L  \rangle = 0.48$ , $\langle L^2 \rangle = 0.31$	Xtrriage
Estimated twinning fraction	0.037 for h,-k,-l	Xtrriage
$F_o, F_c$ correlation	0.92	EDS
Total number of atoms	5962	wwPDB-VP
Average B, all atoms (Å <sup>2</sup> )	48.0	wwPDB-VP

Xtrriage's analysis on translational NCS is as follows: *The largest off-origin peak in the Patterson function is 5.69% of the height of the origin peak. No significant pseudotranslation is detected.*

<sup>1</sup>Intensities estimated from amplitudes.

<sup>2</sup>Theoretical values of  $\langle |L| \rangle$ ,  $\langle L^2 \rangle$  for acentric reflections are 0.5, 0.333 respectively for untwinned datasets, and 0.375, 0.2 for perfectly twinned datasets.

## 5 Model quality [i](#)

### 5.1 Standard geometry [i](#)

Bond lengths and bond angles in the following residue types are not validated in this section: DTT, A1LWJ

The Z score for a bond length (or angle) is the number of standard deviations the observed value is removed from the expected value. A bond length (or angle) with  $|Z| > 5$  is considered an outlier worth inspection. RMSZ is the root-mean-square of all Z scores of the bond lengths (or angles).

Mol	Chain	Bond lengths		Bond angles	
		RMSZ	# Z  >5	RMSZ	# Z  >5
1	A	0.28	0/2417	0.44	0/3262
2	B	0.31	0/2725	0.47	0/3669
3	C	0.52	0/483	0.82	0/744
4	D	0.49	0/475	0.91	0/731
All	All	0.33	0/6100	0.55	0/8406

There are no bond length outliers.

There are no bond angle outliers.

There are no chirality outliers.

There are no planarity outliers.

### 5.2 Too-close contacts [i](#)

In the following table, the Non-H and H(model) columns list the number of non-hydrogen atoms and hydrogen atoms in the chain respectively. The H(added) column lists the number of hydrogen atoms added and optimized by MolProbity. The Clashes column lists the number of clashes within the asymmetric unit, whereas Symm-Clashes lists symmetry-related clashes.

Mol	Chain	Non-H	H(model)	H(added)	Clashes	Symm-Clashes
1	A	2367	0	2319	33	0
2	B	2672	0	2701	34	0
3	C	430	0	236	11	0
4	D	425	0	238	12	0
5	A	8	0	9	0	0
6	B	21	0	0	0	0
7	A	17	0	0	0	0
7	B	22	0	0	0	0
All	All	5962	0	5503	80	0

The all-atom clashscore is defined as the number of clashes found per 1000 atoms (including hydrogen atoms). The all-atom clashscore for this structure is 7.

All (80) close contacts within the same asymmetric unit are listed below, sorted by their clash magnitude.

Atom-1	Atom-2	Interatomic distance (Å)	Clash overlap (Å)
2:B:275:ILE:HD12	2:B:353:THR:HG21	1.65	0.78
1:A:85[B]:ASP:N	1:A:85[B]:ASP:OD1	2.20	0.73
2:B:71:ARG:NH1	2:B:153:ILE:O	2.25	0.69
1:A:213:VAL:HG12	1:A:267:MET:HG2	1.74	0.68
2:B:40:ARG:NH2	4:D:9:DC:OP2	2.28	0.65
1:A:361:THR:HG22	1:A:362:GLU:H	1.62	0.65
2:B:99:ASP:HA	2:B:102:ARG:HE	1.61	0.65
4:D:13:DA:H2''	4:D:14:DT:H5''	1.80	0.64
2:B:277:GLU:O	2:B:280:THR:HG22	2.00	0.61
3:C:4:DC:H2''	3:C:5:DG:C8	2.35	0.61
4:D:11:DC:H2''	4:D:12:DG:C8	2.36	0.60
1:A:300:GLU:HG2	1:A:301:PRO:HD2	1.82	0.60
3:C:7:DG:H22	4:D:16:DC:H5	1.50	0.60
2:B:75:SER:OG	2:B:154:HIS:HB2	2.02	0.59
2:B:312:GLU:HA	2:B:315:MET:HE2	1.85	0.59
1:A:362:GLU:HB3	1:A:462:THR:HG23	1.85	0.58
3:C:2:DA:H2'	3:C:3:DT:C6	2.38	0.58
1:A:363:PHE:HB2	1:A:377:ASP:HB3	1.85	0.58
2:B:142:GLN:OE1	2:B:148:GLN:NE2	2.38	0.55
2:B:38:ARG:O	2:B:42:ARG:HG3	2.07	0.55
4:D:15:DG:H2''	4:D:16:DC:O2	2.07	0.54
2:B:343:GLU:OE2	2:B:366:ARG:NE	2.41	0.52
4:D:9:DC:H2''	4:D:10:DG:C8	2.46	0.51
4:D:14:DT:H2''	4:D:15:DG:H5'	1.93	0.51
1:A:377:ASP:OD1	1:A:378:HIS:N	2.44	0.51
1:A:439:MET:SD	1:A:463:ASN:ND2	2.85	0.50
4:D:12:DG:H2''	4:D:13:DA:C8	2.47	0.49
1:A:378:HIS:HD2	1:A:388:PRO:HG2	1.78	0.48
1:A:442:SER:O	1:A:459:CYS:HA	2.12	0.48
1:A:449:PRO:HG2	2:B:335:HIS:ND1	2.29	0.48
1:A:304:VAL:HG11	1:A:343:LEU:HD22	1.95	0.47
2:B:165:ASP:OD2	2:B:221:ARG:HD3	2.15	0.47
2:B:294:THR:HA	2:B:318:THR:HA	1.96	0.47
1:A:340:ILE:HG12	2:B:117:LEU:HD23	1.96	0.47
2:B:38:ARG:HH12	3:C:9:DA:P	2.38	0.47
1:A:126:PRO:HB2	1:A:130:THR:OG1	2.15	0.47
2:B:215:GLU:CD	2:B:240:ARG:HD3	2.36	0.46

*Continued on next page...*

*Continued from previous page...*

Atom-1	Atom-2	Interatomic distance (Å)	Clash overlap (Å)
1:A:216:ASP:HB2	1:A:266:ARG:HH21	1.80	0.46
4:D:14:DT:H2'	4:D:15:DG:H21	1.81	0.46
2:B:47:LEU:HD13	2:B:66:LYS:HB3	1.98	0.46
2:B:74:VAL:O	2:B:78:ARG:HG3	2.15	0.46
2:B:97:VAL:O	2:B:102:ARG:NH2	2.49	0.45
1:A:181:CYS:HB3	1:A:225:LEU:O	2.17	0.45
1:A:417:LYS:HE3	1:A:417:LYS:HB3	1.71	0.45
4:D:18:DC:H2''	4:D:19:DG:N7	2.32	0.45
3:C:1:DC:H2'	3:C:2:DA:C8	2.52	0.45
3:C:7:DG:H1	4:D:16:DC:H5	1.63	0.44
1:A:102:ARG:HH22	3:C:13:DC:H2'	1.82	0.44
1:A:416:VAL:HG13	1:A:454:ILE:HD12	1.99	0.44
2:B:147:PHE:HZ	2:B:223:ARG:HG2	1.81	0.44
1:A:307[B]:HIS:CE1	1:A:344:GLN:HB3	2.53	0.44
1:A:191:ASP:N	1:A:191:ASP:OD1	2.51	0.44
1:A:370:GLU:N	1:A:370:GLU:OE2	2.50	0.44
2:B:121:LEU:HD22	2:B:266:ILE:HD13	1.99	0.43
2:B:315:MET:HE2	2:B:315:MET:HB2	1.87	0.43
2:B:66:LYS:H	2:B:66:LYS:HG2	1.66	0.43
4:D:9:DC:H2''	4:D:10:DG:H8	1.83	0.43
1:A:112:LEU:O	1:A:116:VAL:HG13	2.18	0.43
2:B:41:ASP:O	2:B:45:THR:OG1	2.36	0.43
3:C:19:DA:H2''	3:C:20:DA:C8	2.54	0.43
1:A:215:PRO:HA	1:A:218:VAL:HG23	2.01	0.43
2:B:67:LEU:HD12	2:B:67:LEU:HA	1.81	0.43
1:A:205:PHE:CE1	2:B:106:ARG:HD3	2.53	0.43
1:A:190:SER:HB2	2:B:113:GLU:OE2	2.19	0.42
2:B:275:ILE:HG12	2:B:357:ARG:CZ	2.49	0.42
1:A:260:ARG:NH2	2:B:122:ASN:HB2	2.35	0.42
1:A:322:LEU:HD11	1:A:328:GLU:HB3	2.02	0.42
1:A:140:LYS:HE3	1:A:140:LYS:HB2	1.79	0.42
1:A:430:ARG:HH21	1:A:434:GLN:HB3	1.84	0.42
1:A:178:ILE:HG12	1:A:338:VAL:HG13	2.01	0.41
1:A:366:ARG:HB2	1:A:375:PHE:HB3	2.03	0.41
2:B:127:VAL:HA	2:B:263:LEU:O	2.20	0.41
2:B:277:GLU:HB3	2:B:280:THR:HA	2.03	0.41
2:B:223:ARG:NH1	2:B:231:GLY:O	2.52	0.41
3:C:6:DG:H2''	3:C:7:DG:C8	2.55	0.41
1:A:172:ALA:O	1:A:342:ARG:HD3	2.20	0.41
3:C:19:DA:H2''	3:C:20:DA:N7	2.35	0.41
3:C:10:DT:H1'	3:C:11:DC:H5'	2.03	0.41

*Continued on next page...*

Continued from previous page...

Atom-1	Atom-2	Interatomic distance (Å)	Clash overlap (Å)
2:B:250:LYS:HA	2:B:250:LYS:HD2	1.84	0.40
2:B:391:GLU:OE2	2:B:395:LYS:NZ	2.36	0.40

There are no symmetry-related clashes.

## 5.3 Torsion angles [i](#)

### 5.3.1 Protein backbone [i](#)

In the following table, the Percentiles column shows the percent Ramachandran outliers of the chain as a percentile score with respect to all X-ray entries followed by that with respect to entries of similar resolution.

The Analysed column shows the number of residues for which the backbone conformation was analysed, and the total number of residues.

Mol	Chain	Analysed	Favoured	Allowed	Outliers	Percentiles	
1	A	280/382 (73%)	270 (96%)	9 (3%)	1 (0%)	30	61
2	B	318/395 (80%)	306 (96%)	8 (2%)	4 (1%)	10	32
All	All	598/777 (77%)	576 (96%)	17 (3%)	5 (1%)	16	44

All (5) Ramachandran outliers are listed below:

Mol	Chain	Res	Type
1	A	117	PRO
2	B	272	PRO
2	B	280	THR
2	B	397	THR
2	B	273	PRO

### 5.3.2 Protein sidechains [i](#)

In the following table, the Percentiles column shows the percent sidechain outliers of the chain as a percentile score with respect to all X-ray entries followed by that with respect to entries of similar resolution.

The Analysed column shows the number of residues for which the sidechain conformation was analysed, and the total number of residues.

Mol	Chain	Analysed	Rotameric	Outliers	Percentiles	
1	A	269/346 (78%)	261 (97%)	8 (3%)	36	70
2	B	291/347 (84%)	285 (98%)	6 (2%)	48	80
All	All	560/693 (81%)	546 (98%)	14 (2%)	42	75

All (14) residues with a non-rotameric sidechain are listed below:

Mol	Chain	Res	Type
1	A	89	LEU
1	A	117	PRO
1	A	118	THR
1	A	203	GLU
1	A	262	SER
1	A	315	TRP
1	A	424	SER
1	A	456	TYR
2	B	34	ASN
2	B	227	ASP
2	B	271	GLN
2	B	280	THR
2	B	281	LYS
2	B	283	PHE

Sometimes sidechains can be flipped to improve hydrogen bonding and reduce clashes. All (2) such sidechains are listed below:

Mol	Chain	Res	Type
1	A	93	ASN
1	A	463	ASN

### 5.3.3 RNA [i](#)

There are no RNA molecules in this entry.

## 5.4 Non-standard residues in protein, DNA, RNA chains [i](#)

There are no non-standard protein/DNA/RNA residues in this entry.

## 5.5 Carbohydrates [i](#)

There are no oligosaccharides in this entry.

## 5.6 Ligand geometry

2 ligands are modelled in this entry.

In the following table, the Counts columns list the number of bonds (or angles) for which Mogul statistics could be retrieved, the number of bonds (or angles) that are observed in the model and the number of bonds (or angles) that are defined in the Chemical Component Dictionary. The Link column lists molecule types, if any, to which the group is linked. The Z score for a bond length (or angle) is the number of standard deviations the observed value is removed from the expected value. A bond length (or angle) with  $|Z| > 2$  is considered an outlier worth inspection. RMSZ is the root-mean-square of all Z scores of the bond lengths (or angles).

Mol	Type	Chain	Res	Link	Bond lengths			Bond angles		
					Counts	RMSZ	# Z  > 2	Counts	RMSZ	# Z  > 2
5	DTT	A	501	-	7,7,7	1.83	2 (28%)	4,8,8	1.67	1 (25%)
6	A1LWJ	B	501	-	23,24,24	2.39	6 (26%)	32,34,34	1.42	4 (12%)

In the following table, the Chirals column lists the number of chiral outliers, the number of chiral centers analysed, the number of these observed in the model and the number defined in the Chemical Component Dictionary. Similar counts are reported in the Torsion and Rings columns. '-' means no outliers of that kind were identified.

Mol	Type	Chain	Res	Link	Chirals	Torsions	Rings
5	DTT	A	501	-	-	8/8/8/8	-
6	A1LWJ	B	501	-	-	2/4/16/16	0/4/4/4

All (8) bond length outliers are listed below:

Mol	Chain	Res	Type	Atoms	Z	Observed(Å)	Ideal(Å)
6	B	501	A1LWJ	O01-C05	8.25	1.49	1.38
6	B	501	A1LWJ	C12-C07	-4.19	1.43	1.50
6	B	501	A1LWJ	C12-C08	-3.87	1.33	1.50
5	A	501	DTT	O3-C3	-3.64	1.35	1.43
6	B	501	A1LWJ	O01-C08	2.77	1.51	1.44
5	A	501	DTT	C1-S1	-2.42	1.76	1.81
6	B	501	A1LWJ	O02-C07	-2.37	1.18	1.22
6	B	501	A1LWJ	C04-C06	-2.27	1.38	1.43

All (5) bond angle outliers are listed below:

Mol	Chain	Res	Type	Atoms	Z	Observed(°)	Ideal(°)
6	B	501	A1LWJ	O01-C08-C14	4.78	116.31	107.66
5	A	501	DTT	O2-C2-C3	2.74	115.35	109.72
6	B	501	A1LWJ	C08-C12-C07	2.70	120.27	112.64

*Continued on next page...*

*Continued from previous page...*

Mol	Chain	Res	Type	Atoms	Z	Observed(°)	Ideal(°)
6	B	501	A1LWJ	C05-C03-C07	-2.48	117.39	120.14
6	B	501	A1LWJ	C13-C06-C10	-2.24	117.94	123.19

There are no chirality outliers.

All (10) torsion outliers are listed below:

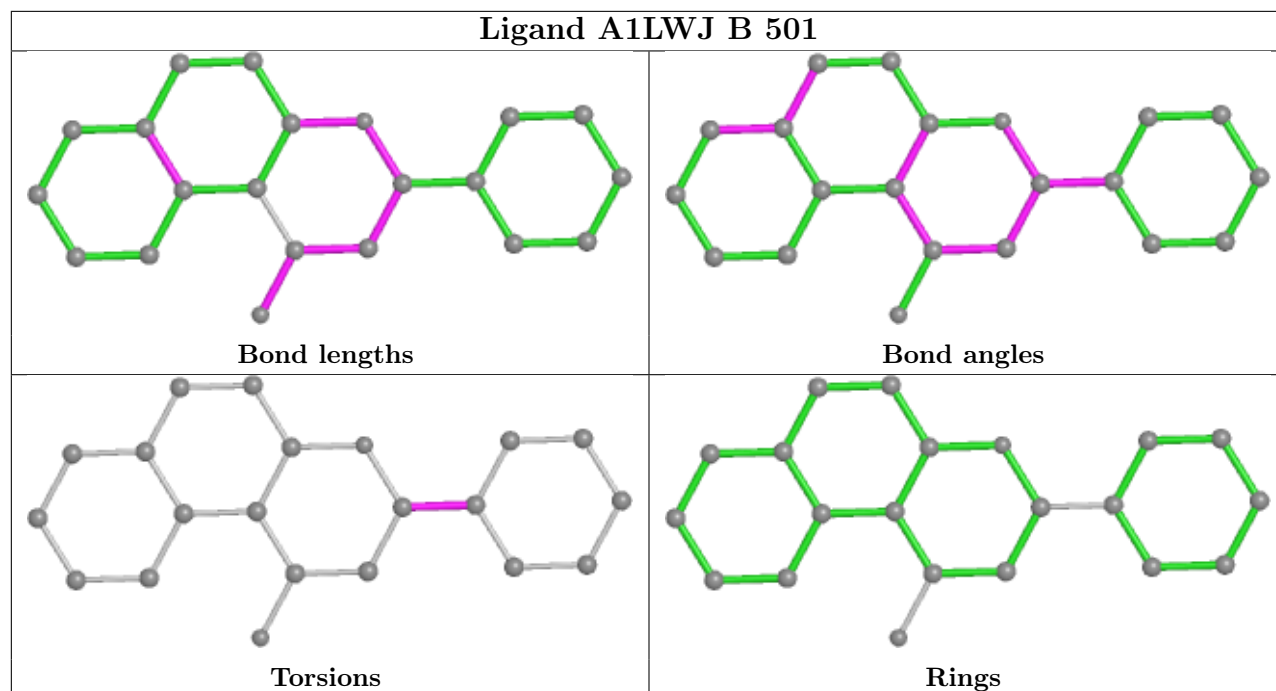
Mol	Chain	Res	Type	Atoms
5	A	501	DTT	S1-C1-C2-O2
5	A	501	DTT	S1-C1-C2-C3
5	A	501	DTT	C1-C2-C3-O3
5	A	501	DTT	C1-C2-C3-C4
5	A	501	DTT	O2-C2-C3-O3
5	A	501	DTT	O2-C2-C3-C4
5	A	501	DTT	C2-C3-C4-S4
5	A	501	DTT	O3-C3-C4-S4
6	B	501	A1LWJ	C12-C08-C14-C18
6	B	501	A1LWJ	C12-C08-C14-C17

There are no ring outliers.

No monomer is involved in short contacts.

The following is a two-dimensional graphical depiction of Mogul quality analysis of bond lengths, bond angles, torsion angles, and ring geometry for all instances of the Ligand of Interest. In addition, ligands with molecular weight > 250 and outliers as shown on the validation Tables will also be included. For torsion angles, if less than 5% of the Mogul distribution of torsion angles is within 10 degrees of the torsion angle in question, then that torsion angle is considered an outlier. Any bond that is central to one or more torsion angles identified as an outlier by Mogul will be highlighted in the graph. For rings, the root-mean-square deviation (RMSD) between the ring in question and similar rings identified by Mogul is calculated over all ring torsion angles. If the average RMSD is greater than 60 degrees and the minimal RMSD between the ring in question and any Mogul-identified rings is also greater than 60 degrees, then that ring is considered an outlier. The outliers are highlighted in purple. The color gray indicates Mogul did not find sufficient equivalents in the CSD to analyse the geometry.





## 5.7 Other polymers [i](#)

There are no such residues in this entry.

## 5.8 Polymer linkage issues [i](#)

There are no chain breaks in this entry.

## 6 Fit of model and data

### 6.1 Protein, DNA and RNA chains

In the following table, the column labelled ‘#RSRZ > 2’ contains the number (and percentage) of RSRZ outliers, followed by percent RSRZ outliers for the chain as percentile scores relative to all X-ray entries and entries of similar resolution. The OWAB column contains the minimum, median, 95<sup>th</sup> percentile and maximum values of the occupancy-weighted average B-factor per residue. The column labelled ‘Q < 0.9’ lists the number of (and percentage) of residues with an average occupancy less than 0.9.

Mol	Chain	Analysed	<RSRZ>	#RSRZ>2	OWAB(Å <sup>2</sup> )	Q<0.9
1	A	290/382 (75%)	-0.05	8 (2%) 55 46	15, 40, 75, 106	2 (0%)
2	B	328/395 (83%)	-0.01	20 (6%) 28 21	23, 38, 76, 124	0
3	C	21/21 (100%)	0.16	0 100 100	51, 63, 93, 103	0
4	D	21/21 (100%)	0.36	0 100 100	45, 69, 88, 94	0
All	All	660/819 (80%)	-0.01	28 (4%) 41 33	15, 40, 81, 124	2 (0%)

All (28) RSRZ outliers are listed below:

Mol	Chain	Res	Type	RSRZ
2	B	273	PRO	6.3
2	B	277	GLU	5.0
2	B	278	ILE	3.9
2	B	33	SER	3.8
2	B	280	THR	3.8
2	B	272	PRO	3.6
2	B	397	THR	3.6
2	B	100	ASN	3.6
2	B	250	LYS	3.4
2	B	213	PHE	3.3
1	A	344	GLN	3.1
2	B	274	SER	3.0
1	A	85[A]	ASP	2.9
1	A	120	SER	2.8
2	B	282	ASN	2.8
1	A	227	THR	2.6
2	B	42	ARG	2.6
2	B	256	ILE	2.5
1	A	119	CYS	2.5
2	B	275	ILE	2.4
2	B	101	CYS	2.3

*Continued on next page...*

*Continued from previous page...*

Mol	Chain	Res	Type	RSRZ
1	A	89	LEU	2.3
2	B	271	GLN	2.2
2	B	231	GLY	2.2
1	A	121	ALA	2.2
2	B	88	LYS	2.1
1	A	125	LYS	2.1
2	B	281	LYS	2.1

## 6.2 Non-standard residues in protein, DNA, RNA chains [i](#)

There are no non-standard protein/DNA/RNA residues in this entry.

## 6.3 Carbohydrates [i](#)

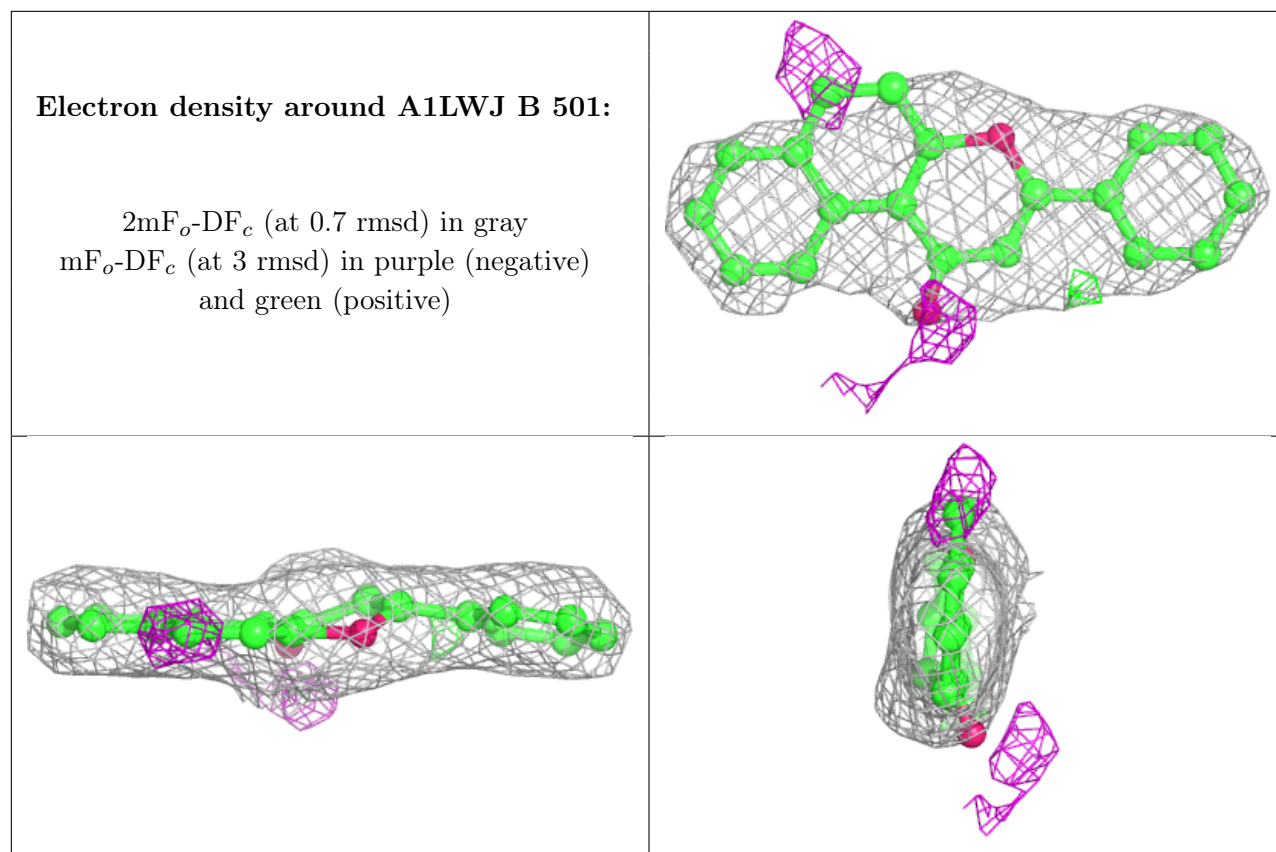
There are no monosaccharides in this entry.

## 6.4 Ligands [i](#)

In the following table, the Atoms column lists the number of modelled atoms in the group and the number defined in the chemical component dictionary. The B-factors column lists the minimum, median, 95<sup>th</sup> percentile and maximum values of B factors of atoms in the group. The column labelled 'Q< 0.9' lists the number of atoms with occupancy less than 0.9.

Mol	Type	Chain	Res	Atoms	RSCC	RSR	B-factors( $\text{\AA}^2$ )	Q<0.9
6	A1LWJ	B	501	21/21	0.90	0.13	31,41,52,66	0
5	DTT	A	501	8/8	0.93	0.15	57,67,82,92	0

The following is a graphical depiction of the model fit to experimental electron density of all instances of the Ligand of Interest. In addition, ligands with molecular weight > 250 and outliers as shown on the geometry validation Tables will also be included. Each fit is shown from different orientation to approximate a three-dimensional view.



## 6.5 Other polymers [i](#)

There are no such residues in this entry.