



Full wwPDB X-ray Structure Validation Report ⓘ

Nov 12, 2024 – 06:36 AM JST

PDB ID : 8X5T
Title : Crystal structure of Thermus thermophilus peptidyl-tRNA hydrolase in complex with adenosine 5'-monophosphate
Authors : Uehara, Y.; Matsumoto, A.; Nakazawa, T.; Fukuta, A.; Ando, K.; Oka, N.; Uchiumi, T.; Ito, K.
Deposited on : 2023-11-19
Resolution : 1.60 Å(reported)

This is a Full wwPDB X-ray Structure Validation Report for a publicly released PDB entry.

We welcome your comments at validation@mail.wwpdb.org

A user guide is available at

<https://www.wwpdb.org/validation/2017/XrayValidationReportHelp>

with specific help available everywhere you see the ⓘ symbol.

The types of validation reports are described at

<http://www.wwpdb.org/validation/2017/FAQs#types>.

The following versions of software and data (see [references ⓘ](#)) were used in the production of this report:

MolProbity : 4.02b-467
Mogul : 1.8.5 (274361), CSD as541be (2020)
Xtriage (Phenix) : 1.13
EDS : 3.0
buster-report : 1.1.7 (2018)
Percentile statistics : 20231227.v01 (using entries in the PDB archive December 27th 2023)
CCP4 : 9.0.003 (Gargrove)
Density-Fitness : 1.0.11
Ideal geometry (proteins) : Engh & Huber (2001)
Ideal geometry (DNA, RNA) : Parkinson et al. (1996)
Validation Pipeline (wwPDB-VP) : 2.39

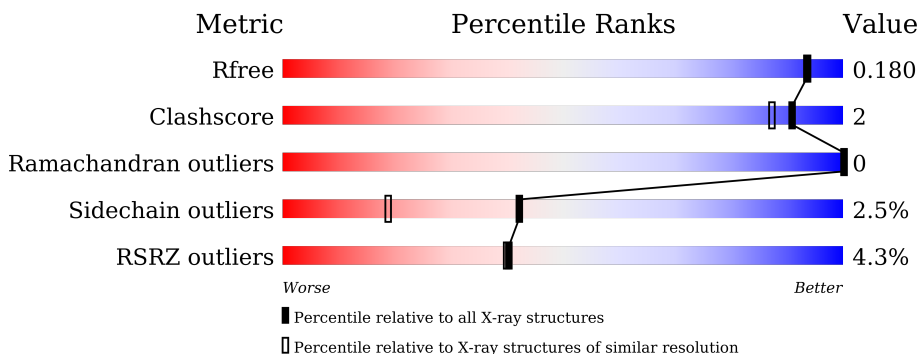
1 Overall quality at a glance

The following experimental techniques were used to determine the structure:

X-RAY DIFFRACTION

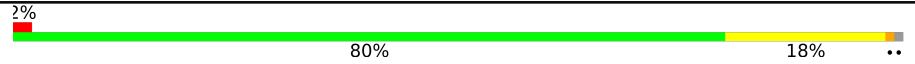


The reported resolution of this entry is 1.60 Å.

Percentile scores (ranging between 0-100) for global validation metrics of the entry are shown in the following graphic. The table shows the number of entries on which the scores are based.



Metric	Whole archive (#Entries)	Similar resolution (#Entries, resolution range(Å))
R_{free}	164625	4274 (1.60-1.60)
Clashscore	180529	4682 (1.60-1.60)
Ramachandran outliers	177936	4583 (1.60-1.60)
Sidechain outliers	177891	4582 (1.60-1.60)
RSRZ outliers	164620	4272 (1.60-1.60)

The table below summarises the geometric issues observed across the polymeric chains and their fit to the electron density. The red, orange, yellow and green segments of the lower bar indicate the fraction of residues that contain outliers for ≥ 3 , 2, 1 and 0 types of geometric quality criteria respectively. A grey segment represents the fraction of residues that are not modelled. The numeric value for each fraction is indicated below the corresponding segment, with a dot representing fractions $\leq 5\%$. The upper red bar (where present) indicates the fraction of residues that have poor fit to the electron density. The numeric value is given above the bar.

Mol	Chain	Length	Quality of chain
1	A	187	 2% 80% 18% ..
1	B	187	 79% 17% ..
1	C	187	 11% 84% 12% ...

2 Entry composition

There are 5 unique types of molecules in this entry. The entry contains 5000 atoms, of which 0 are hydrogens and 0 are deuteriums.

In the tables below, the ZeroOcc column contains the number of atoms modelled with zero occupancy, the AltConf column contains the number of residues with at least one atom in alternate conformation and the Trace column contains the number of residues modelled with at most 2 atoms.

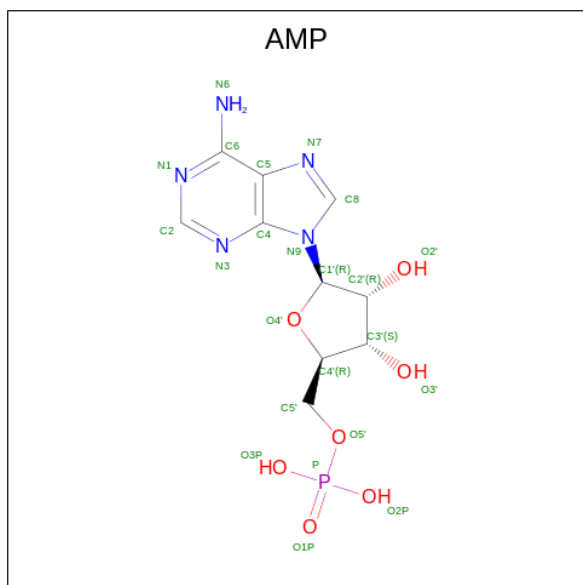
- Molecule 1 is a protein called Peptidyl-tRNA hydrolase.

Mol	Chain	Residues	Atoms					ZeroOcc	AltConf	Trace
			Total	C	N	O	S			
1	A	185	1444	923	266	249	6	0	0	0
1	B	185	1440	919	266	249	6	0	0	0
1	C	184	1436	917	265	248	6	0	0	0

There are 12 discrepancies between the modelled and reference sequences:

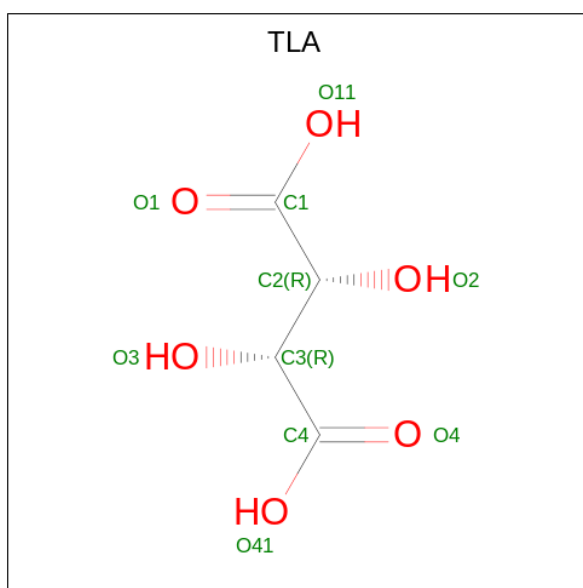
Chain	Residue	Modelled	Actual	Comment	Reference
A	-3	GLY	-	expression tag	UNP Q5SHZ2
A	-2	SER	-	expression tag	UNP Q5SHZ2
A	-1	HIS	-	expression tag	UNP Q5SHZ2
A	0	MET	-	expression tag	UNP Q5SHZ2
B	-3	GLY	-	expression tag	UNP Q5SHZ2
B	-2	SER	-	expression tag	UNP Q5SHZ2
B	-1	HIS	-	expression tag	UNP Q5SHZ2
B	0	MET	-	expression tag	UNP Q5SHZ2
C	-3	GLY	-	expression tag	UNP Q5SHZ2
C	-2	SER	-	expression tag	UNP Q5SHZ2
C	-1	HIS	-	expression tag	UNP Q5SHZ2
C	0	MET	-	expression tag	UNP Q5SHZ2

- Molecule 2 is ADENOSINE MONOPHOSPHATE (three-letter code: AMP) (formula: C₁₀H₁₄N₅O₇P) (labeled as "Ligand of Interest" by depositor).



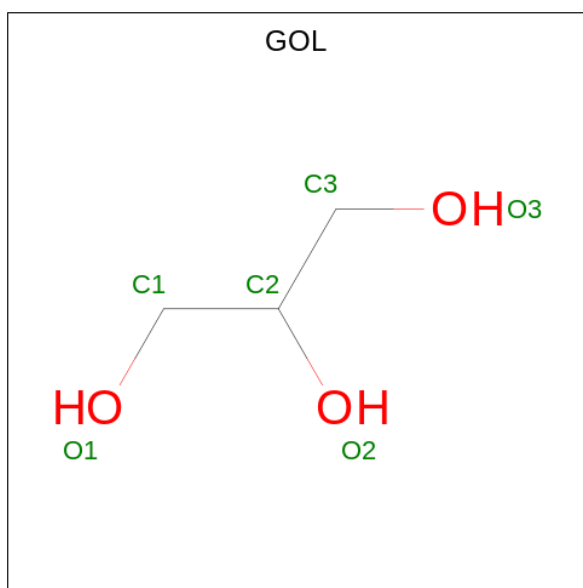
Mol	Chain	Residues	Atoms					ZeroOcc	AltConf
2	A	1	Total	C	N	O	P	0	0
			23	10	5	7	1		
2	B	1	Total	C	N	O	P	0	0
			23	10	5	7	1		

- Molecule 3 is L(+)-TARTARIC ACID (three-letter code: TLA) (formula: $C_4H_6O_6$).



Mol	Chain	Residues	Atoms			ZeroOcc	AltConf
3	A	1	Total	C	O	0	0
			10	4	6		
3	A	1	Total	C	O	0	0
			10	4	6		

- Molecule 4 is GLYCEROL (three-letter code: GOL) (formula: $C_3H_8O_3$).



Mol	Chain	Residues	Atoms	ZeroOcc	AltConf
4	A	1	Total C O 6 3 3	0	0
4	B	1	Total C O 6 3 3	0	0
4	B	1	Total C O 6 3 3	0	0

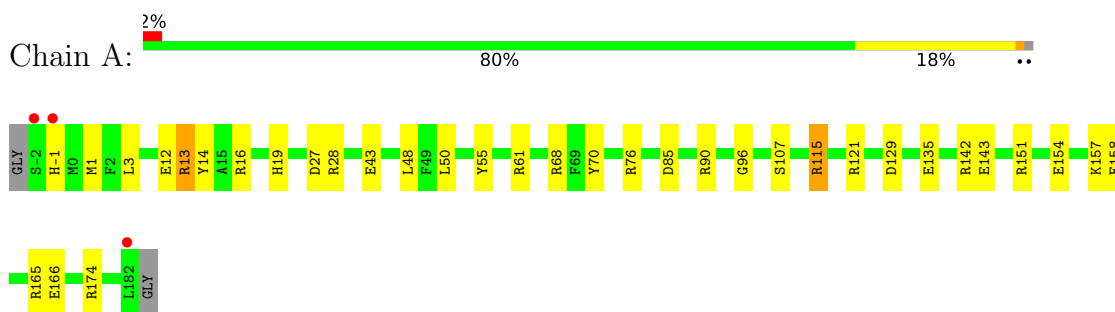
- Molecule 5 is water.

Mol	Chain	Residues	Atoms	ZeroOcc	AltConf
5	A	226	Total O 226 226	0	0
5	B	222	Total O 222 222	0	0
5	C	148	Total O 148 148	0	0

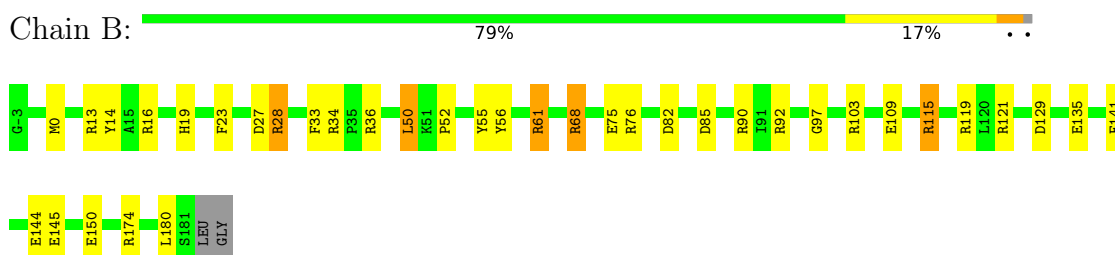
3 Residue-property plots [i](#)

These plots are drawn for all protein, RNA, DNA and oligosaccharide chains in the entry. The first graphic for a chain summarises the proportions of the various outlier classes displayed in the second graphic. The second graphic shows the sequence view annotated by issues in geometry and electron density. Residues are color-coded according to the number of geometric quality criteria for which they contain at least one outlier: green = 0, yellow = 1, orange = 2 and red = 3 or more. A red dot above a residue indicates a poor fit to the electron density ($RSRZ > 2$). Stretches of 2 or more consecutive residues without any outlier are shown as a green connector. Residues present in the sample, but not in the model, are shown in grey.

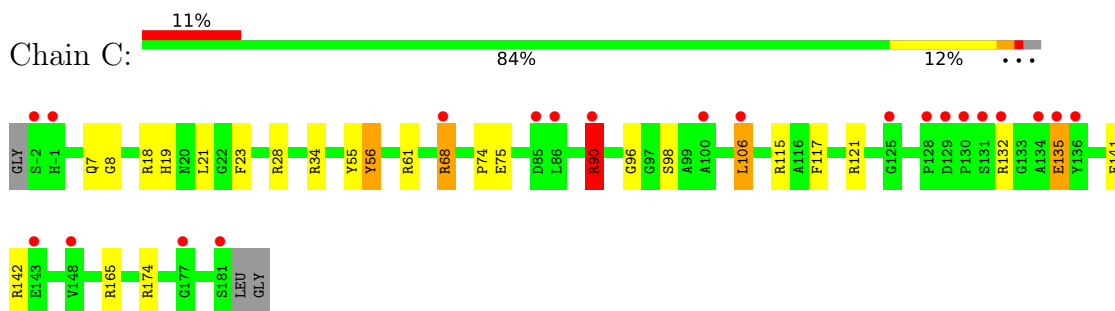
- Molecule 1: Peptidyl-tRNA hydrolase



- Molecule 1: Peptidyl-tRNA hydrolase



- Molecule 1: Peptidyl-tRNA hydrolase



4 Data and refinement statistics

Property	Value	Source
Space group	P 61 2 2	Depositor
Cell constants a, b, c, α , β , γ	120.31Å 120.31Å 185.98Å 90.00° 90.00° 120.00°	Depositor
Resolution (Å)	104.20 – 1.60 104.20 – 1.60	Depositor EDS
% Data completeness (in resolution range)	99.9 (104.20-1.60) 99.9 (104.20-1.60)	Depositor EDS
R_{merge}	0.06	Depositor
R_{sym}	(Not available)	Depositor
$\langle I/\sigma(I) \rangle$ ¹	17.21 (at 1.60Å)	Xtrriage
Refinement program	REFMAC 5.8.0124	Depositor
R, R_{free}	0.144 , 0.168 0.159 , 0.180	Depositor DCC
R_{free} test set	5233 reflections (5.00%)	wwPDB-VP
Wilson B-factor (Å ²)	13.2	Xtrriage
Anisotropy	0.039	Xtrriage
Bulk solvent k_{sol} (e/Å ³), B_{sol} (Å ²)	0.38 , 40.6	EDS
L-test for twinning ²	$\langle L \rangle = 0.50$, $\langle L^2 \rangle = 0.34$	Xtrriage
Estimated twinning fraction	No twinning to report.	Xtrriage
F_o, F_c correlation	0.96	EDS
Total number of atoms	5000	wwPDB-VP
Average B, all atoms (Å ²)	20.0	wwPDB-VP

Xtrriage's analysis on translational NCS is as follows: *The largest off-origin peak in the Patterson function is 4.06% of the height of the origin peak. No significant pseudotranslation is detected.*

¹Intensities estimated from amplitudes.

²Theoretical values of $\langle |L| \rangle$, $\langle L^2 \rangle$ for acentric reflections are 0.5, 0.333 respectively for untwinned datasets, and 0.375, 0.2 for perfectly twinned datasets.

5 Model quality i

5.1 Standard geometry i

Bond lengths and bond angles in the following residue types are not validated in this section: AMP, TLA, GOL

The Z score for a bond length (or angle) is the number of standard deviations the observed value is removed from the expected value. A bond length (or angle) with $|Z| > 5$ is considered an outlier worth inspection. RMSZ is the root-mean-square of all Z scores of the bond lengths (or angles).

Mol	Chain	Bond lengths		Bond angles	
		RMSZ	# Z >5	RMSZ	# Z >5
1	A	1.59	21/1479 (1.4%)	1.76	36/2000 (1.8%)
1	B	1.61	12/1475 (0.8%)	1.74	34/1994 (1.7%)
1	C	1.40	3/1471 (0.2%)	1.46	19/1989 (1.0%)
All	All	1.54	36/4425 (0.8%)	1.66	89/5983 (1.5%)

Chiral center outliers are detected by calculating the chiral volume of a chiral center and verifying if the center is modelled as a planar moiety or with the opposite hand. A planarity outlier is detected by checking planarity of atoms in a peptide group, atoms in a mainchain group or atoms of a sidechain that are expected to be planar.

Mol	Chain	#Chirality outliers	#Planarity outliers
1	B	0	1

All (36) bond length outliers are listed below:

Mol	Chain	Res	Type	Atoms	Z	Observed(Å)	Ideal(Å)
1	A	14	TYR	CE1-CZ	-10.28	1.25	1.38
1	A	135	GLU	CD-OE2	10.04	1.36	1.25
1	A	151	ARG	CD-NE	-7.42	1.33	1.46
1	B	109	GLU	CD-OE1	7.11	1.33	1.25
1	B	27	ASP	CB-CG	-6.72	1.37	1.51
1	A	76	ARG	CD-NE	-6.61	1.35	1.46
1	B	14	TYR	CE1-CZ	-6.29	1.30	1.38
1	B	68	ARG	CZ-NH1	6.26	1.41	1.33
1	A	143	GLU	CA-CB	6.20	1.67	1.53
1	B	76	ARG	NE-CZ	6.17	1.41	1.33
1	B	50	LEU	CA-CB	-6.00	1.40	1.53
1	A	121	ARG	CD-NE	-5.99	1.36	1.46
1	A	12	GLU	CG-CD	5.90	1.60	1.51
1	C	55	TYR	CG-CD2	5.81	1.46	1.39
1	A	158	GLU	CD-OE2	5.79	1.32	1.25

Continued on next page...

Continued from previous page...

Mol	Chain	Res	Type	Atoms	Z	Observed(Å)	Ideal(Å)
1	A	50	LEU	CB-CG	-5.79	1.35	1.52
1	A	142	ARG	CD-NE	-5.76	1.36	1.46
1	A	90	ARG	CZ-NH1	5.72	1.40	1.33
1	B	121	ARG	CD-NE	-5.65	1.36	1.46
1	C	75	GLU	CD-OE1	5.65	1.31	1.25
1	C	8	GLY	N-CA	-5.64	1.37	1.46
1	A	68	ARG	CZ-NH1	5.55	1.40	1.33
1	B	76	ARG	CZ-NH1	5.50	1.40	1.33
1	A	129	ASP	N-CA	-5.48	1.35	1.46
1	B	144	GLU	CD-OE1	5.46	1.31	1.25
1	B	115	ARG	CZ-NH1	5.38	1.40	1.33
1	A	143	GLU	CD-OE2	-5.35	1.19	1.25
1	A	143	GLU	CB-CG	-5.33	1.42	1.52
1	B	0	MET	CG-SD	-5.33	1.67	1.81
1	A	166	GLU	CG-CD	5.27	1.59	1.51
1	A	107	SER	CB-OG	-5.19	1.35	1.42
1	A	142	ARG	CZ-NH1	5.18	1.39	1.33
1	A	3	LEU	CB-CG	-5.15	1.37	1.52
1	A	90	ARG	NE-CZ	5.13	1.39	1.33
1	B	76	ARG	CZ-NH2	5.09	1.39	1.33
1	A	166	GLU	CD-OE2	5.09	1.31	1.25

All (89) bond angle outliers are listed below:

Mol	Chain	Res	Type	Atoms	Z	Observed(°)	Ideal(°)
1	A	28	ARG	NE-CZ-NH1	-15.13	112.74	120.30
1	A	90	ARG	NE-CZ-NH1	14.53	127.56	120.30
1	A	68	ARG	NE-CZ-NH2	-13.40	113.60	120.30
1	A	85	ASP	CB-CG-OD2	-12.97	106.62	118.30
1	B	27	ASP	CB-CG-OD1	12.17	129.25	118.30
1	A	76	ARG	NE-CZ-NH2	-12.12	114.24	120.30
1	B	28	ARG	NE-CZ-NH2	-11.45	114.58	120.30
1	B	68	ARG	NE-CZ-NH2	-10.50	115.05	120.30
1	B	28	ARG	NE-CZ-NH1	10.28	125.44	120.30
1	A	90	ARG	NE-CZ-NH2	-10.03	115.28	120.30
1	A	28	ARG	NH1-CZ-NH2	9.76	130.14	119.40
1	A	28	ARG	NE-CZ-NH2	-9.04	115.78	120.30
1	B	85	ASP	CB-CG-OD2	-8.75	110.42	118.30
1	A	70	TYR	CB-CG-CD1	-8.70	115.78	121.00
1	C	34	ARG	NE-CZ-NH2	-8.69	115.96	120.30
1	A	129	ASP	CB-CG-OD1	8.57	126.02	118.30
1	B	174	ARG	NE-CZ-NH1	-8.55	116.03	120.30

Continued on next page...

Continued from previous page...

Mol	Chain	Res	Type	Atoms	Z	Observed(°)	Ideal(°)
1	C	68	ARG	NE-CZ-NH1	8.40	124.50	120.30
1	B	68	ARG	NE-CZ-NH1	8.34	124.47	120.30
1	C	90	ARG	NE-CZ-NH2	8.01	124.30	120.30
1	C	165	ARG	NE-CZ-NH1	-7.91	116.35	120.30
1	A	16	ARG	NE-CZ-NH1	7.68	124.14	120.30
1	B	141	PHE	CB-CG-CD1	-7.68	115.42	120.80
1	A	50	LEU	CB-CG-CD2	-7.66	97.98	111.00
1	A	165	ARG	NE-CZ-NH1	7.65	124.12	120.30
1	A	16	ARG	NE-CZ-NH2	-7.60	116.50	120.30
1	A	121	ARG	NE-CZ-NH2	-7.52	116.54	120.30
1	B	55	TYR	CB-CG-CD2	-7.52	116.49	121.00
1	A	55	TYR	CG-CD2-CE2	-7.41	115.37	121.30
1	A	76	ARG	NE-CZ-NH1	7.38	123.99	120.30
1	B	103	ARG	NE-CZ-NH2	-7.27	116.67	120.30
1	B	135	GLU	OE1-CD-OE2	-7.21	114.65	123.30
1	B	16	ARG	NE-CZ-NH1	7.10	123.85	120.30
1	B	23	PHE	CB-CG-CD1	7.09	125.77	120.80
1	B	119	ARG	NE-CZ-NH2	-7.07	116.77	120.30
1	B	34	ARG	NE-CZ-NH2	7.03	123.81	120.30
1	A	27	ASP	CB-CG-OD1	7.00	124.60	118.30
1	A	13	ARG	CG-CD-NE	-6.98	97.15	111.80
1	A	61	ARG	CG-CD-NE	6.88	126.25	111.80
1	C	121	ARG	NE-CZ-NH2	-6.85	116.88	120.30
1	B	36	ARG	NE-CZ-NH2	-6.84	116.88	120.30
1	A	151	ARG	NE-CZ-NH1	6.81	123.70	120.30
1	A	14	TYR	CB-CG-CD1	6.80	125.08	121.00
1	B	115	ARG	NE-CZ-NH2	-6.79	116.90	120.30
1	C	28	ARG	CG-CD-NE	-6.72	97.68	111.80
1	A	50	LEU	CA-CB-CG	6.71	130.74	115.30
1	B	16	ARG	NE-CZ-NH2	-6.62	116.99	120.30
1	B	61	ARG	NE-CZ-NH2	-6.49	117.06	120.30
1	B	180	LEU	CB-CG-CD1	6.32	121.75	111.00
1	B	90	ARG	NE-CZ-NH1	-6.32	117.14	120.30
1	B	75	GLU	OE1-CD-OE2	6.29	130.85	123.30
1	C	23	PHE	CB-CG-CD2	-6.27	116.41	120.80
1	B	13	ARG	NE-CZ-NH2	6.20	123.40	120.30
1	C	90	ARG	NE-CZ-NH1	-6.20	117.20	120.30
1	C	106	LEU	CB-CG-CD2	-6.18	100.49	111.00
1	A	166	GLU	OE1-CD-OE2	-6.08	116.00	123.30
1	C	121	ARG	NE-CZ-NH1	6.03	123.31	120.30
1	A	158	GLU	OE1-CD-OE2	-6.02	116.07	123.30
1	B	27	ASP	OD1-CG-OD2	-5.93	112.03	123.30

Continued on next page...

Continued from previous page...

Mol	Chain	Res	Type	Atoms	Z	Observed(°)	Ideal(°)
1	B	145	GLU	OE1-CD-OE2	5.85	130.32	123.30
1	C	56	TYR	CB-CG-CD2	-5.72	117.57	121.00
1	A	55	TYR	CD1-CE1-CZ	-5.66	114.71	119.80
1	A	12	GLU	OE1-CD-OE2	-5.63	116.55	123.30
1	B	56	TYR	CG-CD2-CE2	5.60	125.78	121.30
1	B	82	ASP	CB-CG-OD1	5.58	123.32	118.30
1	A	143	GLU	OE1-CD-OE2	5.54	129.94	123.30
1	A	142	ARG	NE-CZ-NH2	-5.51	117.54	120.30
1	C	174	ARG	NE-CZ-NH2	-5.50	117.55	120.30
1	B	33	PHE	CB-CG-CD1	5.50	124.65	120.80
1	A	85	ASP	OD1-CG-OD2	5.48	133.72	123.30
1	A	115	ARG	NE-CZ-NH2	-5.43	117.58	120.30
1	C	61	ARG	NE-CZ-NH2	-5.34	117.63	120.30
1	A	154	GLU	OE1-CD-OE2	5.33	129.69	123.30
1	A	13	ARG	NE-CZ-NH1	-5.30	117.65	120.30
1	B	61	ARG	CB-CA-C	-5.28	99.83	110.40
1	C	165	ARG	NE-CZ-NH2	5.24	122.92	120.30
1	B	52	PRO	O-C-N	5.17	130.98	122.70
1	C	18	ARG	NE-CZ-NH1	5.16	122.88	120.30
1	C	90	ARG	CG-CD-NE	5.16	122.64	111.80
1	B	174	ARG	NE-CZ-NH2	5.15	122.88	120.30
1	C	106	LEU	CB-CG-CD1	5.15	119.76	111.00
1	C	141	PHE	CB-CG-CD2	-5.14	117.20	120.80
1	C	21	LEU	CB-CG-CD2	-5.11	102.31	111.00
1	A	14	TYR	CB-CG-CD2	-5.11	117.93	121.00
1	B	50	LEU	CA-CB-CG	5.08	126.98	115.30
1	A	174	ARG	CG-CD-NE	-5.08	101.14	111.80
1	B	33	PHE	CZ-CE2-CD2	5.07	126.19	120.10
1	A	1	MET	CG-SD-CE	-5.04	92.13	100.20
1	B	129	ASP	CB-CG-OD1	5.02	122.81	118.30

There are no chirality outliers.

All (1) planarity outliers are listed below:

Mol	Chain	Res	Type	Group
1	B	61	ARG	Sidechain

5.2 Too-close contacts [i](#)

In the following table, the Non-H and H(model) columns list the number of non-hydrogen atoms and hydrogen atoms in the chain respectively. The H(added) column lists the number of hydrogen

atoms added and optimized by MolProbity. The Clashes column lists the number of clashes within the asymmetric unit, whereas Symm-Clashes lists symmetry-related clashes.

Mol	Chain	Non-H	H(model)	H(added)	Clashes	Symm-Clashes
1	A	1444	0	1464	2	0
1	B	1440	0	1456	5	0
1	C	1436	0	1453	7	0
2	A	23	0	12	0	0
2	B	23	0	12	0	0
3	A	20	0	8	0	0
4	A	6	0	8	0	0
4	B	12	0	16	0	0
5	A	226	0	0	0	0
5	B	222	0	0	2	0
5	C	148	0	0	2	0
All	All	5000	0	4429	14	0

The all-atom clashscore is defined as the number of clashes found per 1000 atoms (including hydrogen atoms). The all-atom clashscore for this structure is 2.

All (14) close contacts within the same asymmetric unit are listed below, sorted by their clash magnitude.

Atom-1	Atom-2	Interatomic distance (Å)	Clash overlap (Å)
1:B:68:ARG:HG3	5:B:347:HOH:O	1.69	0.90
1:B:28:ARG:NH2	1:B:150:GLU:OE1	2.28	0.64
1:B:28:ARG:HH22	1:B:150:GLU:CD	2.04	0.61
1:C:68:ARG:NH2	5:C:201:HOH:O	2.35	0.59
1:B:92:ARG:CG	5:B:367:HOH:O	2.59	0.50
1:C:142:ARG:NH1	5:C:202:HOH:O	2.40	0.50
1:B:97:GLY:HA2	1:B:115:ARG:CZ	2.41	0.50
1:A:43:GLU:HG2	1:A:48:LEU:HD23	1.94	0.49
1:A:96:GLY:HA2	1:A:115:ARG:O	2.15	0.46
1:C:132:ARG:NH2	1:C:135:GLU:HG3	2.34	0.42
1:C:74:PRO:O	1:C:117:PHE:HA	2.19	0.42
1:C:7:GLN:HB3	1:C:56:TYR:CE2	2.55	0.42
1:C:96:GLY:HA2	1:C:115:ARG:O	2.20	0.42
1:C:90:ARG:HH21	1:C:90:ARG:HG3	1.85	0.41

There are no symmetry-related clashes.

5.3 Torsion angles [i](#)

5.3.1 Protein backbone [i](#)

In the following table, the Percentiles column shows the percent Ramachandran outliers of the chain as a percentile score with respect to all X-ray entries followed by that with respect to entries of similar resolution.

The Analysed column shows the number of residues for which the backbone conformation was analysed, and the total number of residues.

Mol	Chain	Analysed	Favoured	Allowed	Outliers	Percentiles	
1	A	183/187 (98%)	180 (98%)	3 (2%)	0	100	100
1	B	183/187 (98%)	179 (98%)	4 (2%)	0	100	100
1	C	182/187 (97%)	177 (97%)	5 (3%)	0	100	100
All	All	548/561 (98%)	536 (98%)	12 (2%)	0	100	100

There are no Ramachandran outliers to report.

5.3.2 Protein sidechains [i](#)

In the following table, the Percentiles column shows the percent sidechain outliers of the chain as a percentile score with respect to all X-ray entries followed by that with respect to entries of similar resolution.

The Analysed column shows the number of residues for which the sidechain conformation was analysed, and the total number of residues.

Mol	Chain	Analysed	Rotameric	Outliers	Percentiles	
1	A	147/147 (100%)	143 (97%)	4 (3%)	40	17
1	B	146/147 (99%)	144 (99%)	2 (1%)	62	43
1	C	146/147 (99%)	141 (97%)	5 (3%)	32	11
All	All	439/441 (100%)	428 (98%)	11 (2%)	42	19

All (11) residues with a non-rotameric sidechain are listed below:

Mol	Chain	Res	Type
1	A	-1	HIS
1	A	13	ARG
1	A	19	HIS
1	A	157	LYS
1	B	19	HIS

Continued on next page...

Continued from previous page...

Mol	Chain	Res	Type
1	B	50	LEU
1	C	19	HIS
1	C	90	ARG
1	C	98	SER
1	C	106	LEU
1	C	135	GLU

Sometimes sidechains can be flipped to improve hydrogen bonding and reduce clashes. All (1) such sidechains are listed below:

Mol	Chain	Res	Type
1	A	7	GLN

5.3.3 RNA [i](#)

There are no RNA molecules in this entry.

5.4 Non-standard residues in protein, DNA, RNA chains [i](#)

There are no non-standard protein/DNA/RNA residues in this entry.

5.5 Carbohydrates [i](#)

There are no oligosaccharides in this entry.

5.6 Ligand geometry [i](#)

7 ligands are modelled in this entry.

In the following table, the Counts columns list the number of bonds (or angles) for which Mogul statistics could be retrieved, the number of bonds (or angles) that are observed in the model and the number of bonds (or angles) that are defined in the Chemical Component Dictionary. The Link column lists molecule types, if any, to which the group is linked. The Z score for a bond length (or angle) is the number of standard deviations the observed value is removed from the expected value. A bond length (or angle) with $|Z| > 2$ is considered an outlier worth inspection. RMSZ is the root-mean-square of all Z scores of the bond lengths (or angles).

Mol	Type	Chain	Res	Link	Bond lengths			Bond angles		
					Counts	RMSZ	# $ Z > 2$	Counts	RMSZ	# $ Z > 2$
3	TLA	A	203	-	9,9,9	1.46	1 (11%)	12,12,12	1.41	1 (8%)

Mol	Type	Chain	Res	Link	Bond lengths			Bond angles		
					Counts	RMSZ	# Z > 2	Counts	RMSZ	# Z > 2
2	AMP	B	201	-	22,25,25	1.31	5 (22%)	25,38,38	1.37	2 (8%)
3	TLA	A	202	-	9,9,9	1.53	1 (11%)	12,12,12	2.03	4 (33%)
2	AMP	A	201	-	22,25,25	1.11	1 (4%)	25,38,38	3.27	8 (32%)
4	GOL	A	204	-	5,5,5	1.13	0	5,5,5	0.54	0
4	GOL	B	202	-	5,5,5	0.72	0	5,5,5	1.22	1 (20%)
4	GOL	B	203	-	5,5,5	0.62	0	5,5,5	1.06	0

In the following table, the Chirals column lists the number of chiral outliers, the number of chiral centers analysed, the number of these observed in the model and the number defined in the Chemical Component Dictionary. Similar counts are reported in the Torsion and Rings columns. '-' means no outliers of that kind were identified.

Mol	Type	Chain	Res	Link	Chirals	Torsions	Rings
3	TLA	A	203	-	-	0/12/12/12	-
2	AMP	B	201	-	-	3/6/26/26	0/3/3/3
3	TLA	A	202	-	-	0/12/12/12	-
2	AMP	A	201	-	-	1/6/26/26	0/3/3/3
4	GOL	A	204	-	-	0/4/4/4	-
4	GOL	B	202	-	-	0/4/4/4	-
4	GOL	B	203	-	-	2/4/4/4	-

All (8) bond length outliers are listed below:

Mol	Chain	Res	Type	Atoms	Z	Observed(Å)	Ideal(Å)
3	A	202	TLA	O11-C1	-3.10	1.20	1.30
2	B	201	AMP	C2'-C1'	-2.84	1.49	1.53
2	A	201	AMP	O4'-C1'	2.38	1.44	1.41
3	A	203	TLA	C3-C4	-2.28	1.49	1.52
2	B	201	AMP	C8-N7	-2.20	1.30	1.34
2	B	201	AMP	O3'-C3'	2.19	1.48	1.43
2	B	201	AMP	P-O2P	-2.17	1.46	1.54
2	B	201	AMP	C2-N1	2.04	1.37	1.33

All (16) bond angle outliers are listed below:

Mol	Chain	Res	Type	Atoms	Z	Observed(°)	Ideal(°)
2	A	201	AMP	O3P-P-O2P	10.21	146.65	107.64
2	A	201	AMP	O2P-P-O1P	-6.46	85.37	110.68
2	A	201	AMP	O4'-C1'-C2'	-5.96	98.21	106.93
2	A	201	AMP	C5-C6-N6	4.64	127.41	120.35
3	A	202	TLA	O11-C1-O1	4.20	133.62	124.09

Continued on next page...

Continued from previous page...

Mol	Chain	Res	Type	Atoms	Z	Observed(°)	Ideal(°)
2	A	201	AMP	O2P-P-O5'	-3.93	96.27	106.73
2	A	201	AMP	C5-C6-N1	-3.79	111.76	120.35
3	A	202	TLA	O1-C1-C2	-3.32	112.91	121.63
2	B	201	AMP	N3-C2-N1	-3.31	123.50	128.68
3	A	203	TLA	O4-C4-C3	-2.93	113.93	121.63
2	A	201	AMP	O3P-P-O5'	-2.67	99.62	106.73
3	A	202	TLA	O3-C3-C2	-2.51	105.25	110.23
2	B	201	AMP	C2-N1-C6	2.49	123.02	118.75
2	A	201	AMP	C3'-C2'-C1'	2.27	104.39	100.98
3	A	202	TLA	O3-C3-C4	-2.08	106.29	110.66
4	B	202	GOL	O2-C2-C3	2.01	117.97	109.12

There are no chirality outliers.

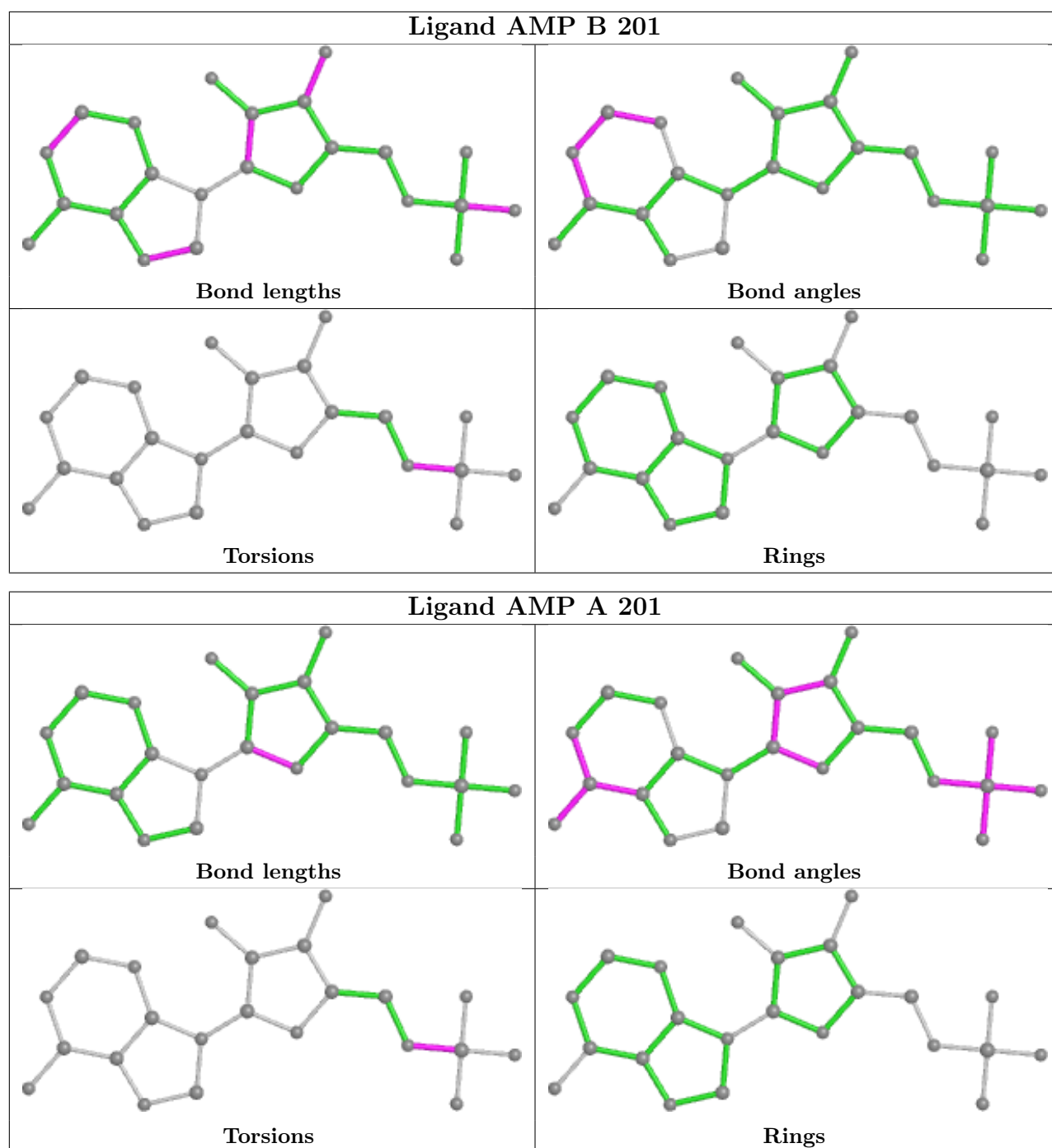
All (6) torsion outliers are listed below:

Mol	Chain	Res	Type	Atoms
2	A	201	AMP	C5'-O5'-P-O2P
2	B	201	AMP	C5'-O5'-P-O1P
4	B	203	GOL	O1-C1-C2-O2
2	B	201	AMP	C5'-O5'-P-O2P
2	B	201	AMP	C5'-O5'-P-O3P
4	B	203	GOL	O1-C1-C2-C3

There are no ring outliers.

No monomer is involved in short contacts.

The following is a two-dimensional graphical depiction of Mogul quality analysis of bond lengths, bond angles, torsion angles, and ring geometry for all instances of the Ligand of Interest. In addition, ligands with molecular weight > 250 and outliers as shown on the validation Tables will also be included. For torsion angles, if less than 5% of the Mogul distribution of torsion angles is within 10 degrees of the torsion angle in question, then that torsion angle is considered an outlier. Any bond that is central to one or more torsion angles identified as an outlier by Mogul will be highlighted in the graph. For rings, the root-mean-square deviation (RMSD) between the ring in question and similar rings identified by Mogul is calculated over all ring torsion angles. If the average RMSD is greater than 60 degrees and the minimal RMSD between the ring in question and any Mogul-identified rings is also greater than 60 degrees, then that ring is considered an outlier. The outliers are highlighted in purple. The color gray indicates Mogul did not find sufficient equivalents in the CSD to analyse the geometry.



5.7 Other polymers [i](#)

There are no such residues in this entry.

5.8 Polymer linkage issues [i](#)

There are no chain breaks in this entry.

6 Fit of model and data

6.1 Protein, DNA and RNA chains

In the following table, the column labelled ‘#RSRZ > 2’ contains the number (and percentage) of RSRZ outliers, followed by percent RSRZ outliers for the chain as percentile scores relative to all X-ray entries and entries of similar resolution. The OWAB column contains the minimum, median, 95th percentile and maximum values of the occupancy-weighted average B-factor per residue. The column labelled ‘Q < 0.9’ lists the number of (and percentage) of residues with an average occupancy less than 0.9.

Mol	Chain	Analysed	<RSRZ>	#RSRZ>2	OWAB(Å ²)	Q<0.9
1	A	185/187 (98%)	-0.50	3 (1%) 70 73	8, 12, 24, 63	0
1	B	185/187 (98%)	-0.27	0 100 100	9, 15, 29, 38	0
1	C	184/187 (98%)	0.49	21 (11%) 11 10	11, 23, 47, 67	0
All	All	554/561 (98%)	-0.10	24 (4%) 40 40	8, 15, 38, 67	0

All (24) RSRZ outliers are listed below:

Mol	Chain	Res	Type	RSRZ
1	A	-1	HIS	5.1
1	C	128	PRO	4.8
1	C	129	ASP	3.9
1	A	-2	SER	3.9
1	C	-1	HIS	3.7
1	C	130	PRO	3.6
1	C	-2	SER	3.4
1	C	131	SER	3.3
1	A	182	LEU	3.2
1	C	177	GLY	3.1
1	C	132	ARG	2.9
1	C	85	ASP	2.7
1	C	136	TYR	2.5
1	C	125	GLY	2.4
1	C	100	ALA	2.4
1	C	68	ARG	2.4
1	C	90	ARG	2.3
1	C	135	GLU	2.2
1	C	143	GLU	2.2
1	C	86	LEU	2.2
1	C	106	LEU	2.2
1	C	148	VAL	2.1
1	C	134	ALA	2.0

Continued on next page...

Continued from previous page...

Mol	Chain	Res	Type	RSRZ
1	C	181	SER	2.0

6.2 Non-standard residues in protein, DNA, RNA chains [i](#)

There are no non-standard protein/DNA/RNA residues in this entry.

6.3 Carbohydrates [i](#)

There are no monosaccharides in this entry.

6.4 Ligands [i](#)

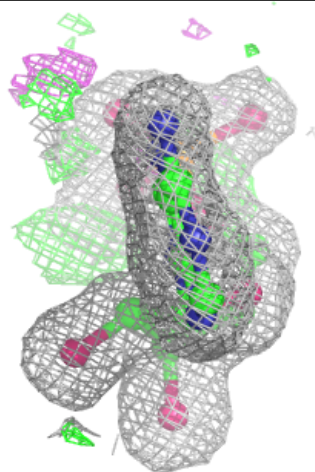
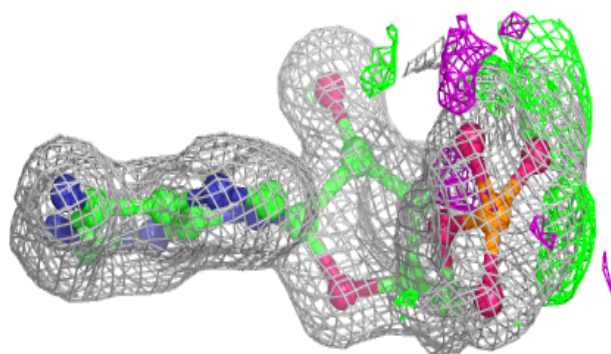
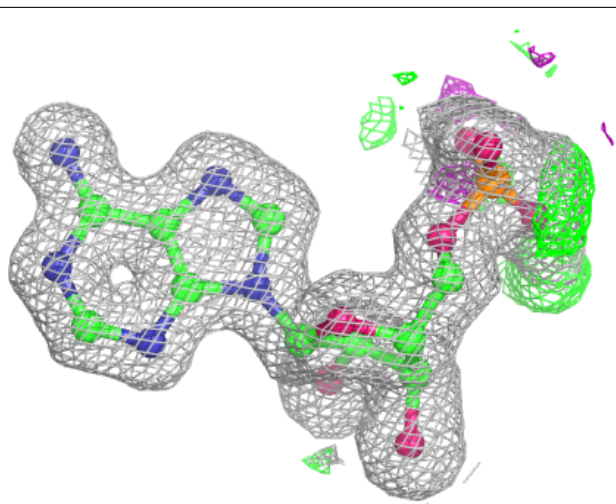
In the following table, the Atoms column lists the number of modelled atoms in the group and the number defined in the chemical component dictionary. The B-factors column lists the minimum, median, 95th percentile and maximum values of B factors of atoms in the group. The column labelled 'Q< 0.9' lists the number of atoms with occupancy less than 0.9.

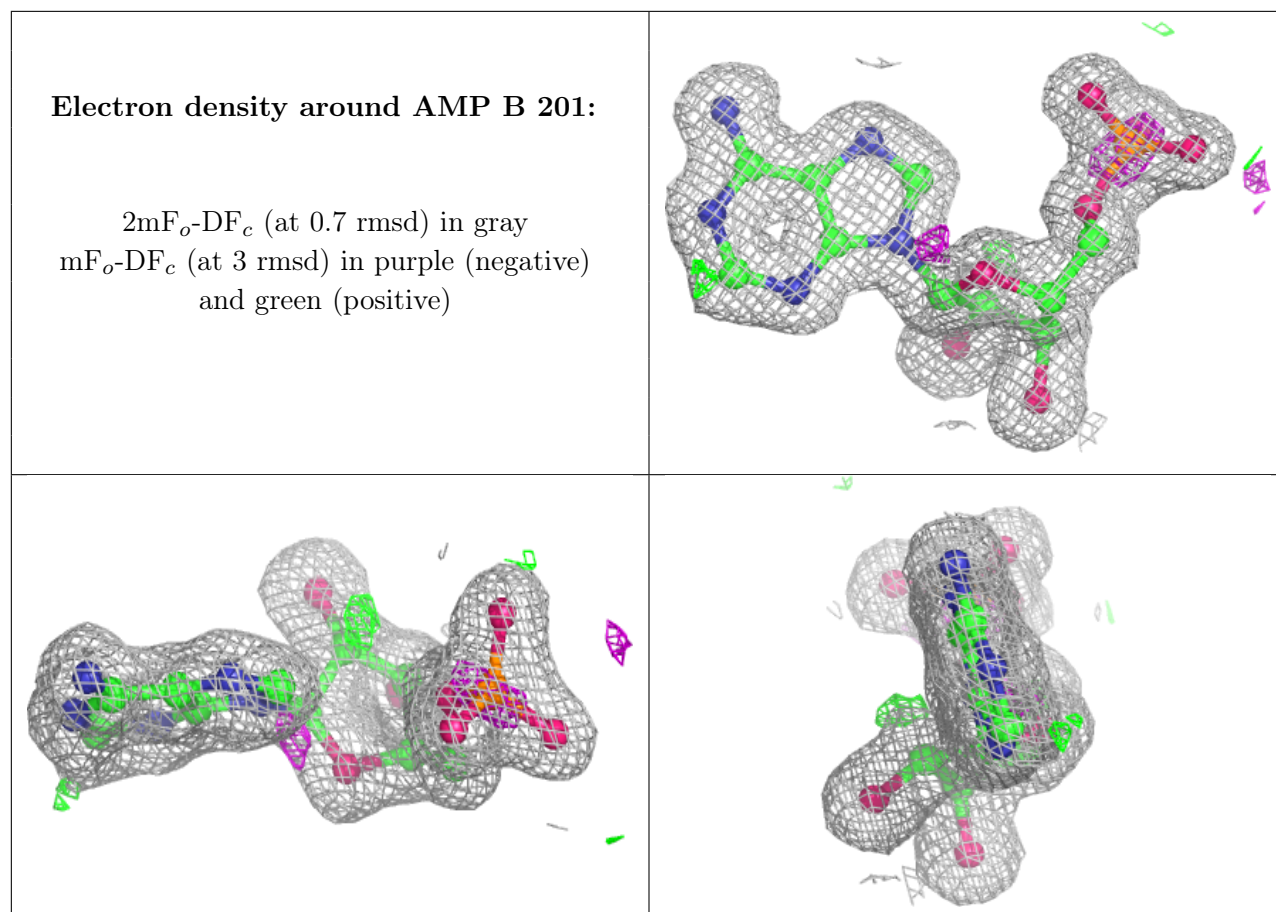
Mol	Type	Chain	Res	Atoms	RSCC	RSR	B-factors(Å ²)	Q<0.9
4	GOL	B	203	6/6	0.89	0.12	33,36,36,37	0
4	GOL	A	204	6/6	0.91	0.09	21,23,29,29	0
3	TLA	A	203	10/10	0.93	0.08	26,27,32,33	0
4	GOL	B	202	6/6	0.95	0.08	22,26,26,31	0
2	AMP	A	201	23/23	0.97	0.06	9,11,29,35	0
3	TLA	A	202	10/10	0.97	0.05	14,15,20,20	0
2	AMP	B	201	23/23	0.98	0.05	12,13,22,22	0

The following is a graphical depiction of the model fit to experimental electron density of all instances of the Ligand of Interest. In addition, ligands with molecular weight > 250 and outliers as shown on the geometry validation Tables will also be included. Each fit is shown from different orientation to approximate a three-dimensional view.

Electron density around AMP A 201:

$2mF_o-DF_c$ (at 0.7 rmsd) in gray
 mF_o-DF_c (at 3 rmsd) in purple (negative)
and green (positive)





6.5 Other polymers [i](#)

There are no such residues in this entry.