



Full wwPDB X-ray Structure Validation Report ⓘ

Mar 13, 2024 – 06:13 PM EDT

PDB ID : 8V8I
Title : PI3Ka H1047R co-crystal structure with inhibitor in cryptic pocket (compound 5).
Authors : Gunn, R.J.; Lawson, J.D.
Deposited on : 2023-12-05
Resolution : 3.20 Å(reported)

This is a Full wwPDB X-ray Structure Validation Report for a publicly released PDB entry.

We welcome your comments at validation@mail.wwpdb.org

A user guide is available at

<https://www.wwpdb.org/validation/2017/XrayValidationReportHelp>

with specific help available everywhere you see the ⓘ symbol.

The types of validation reports are described at

<http://www.wwpdb.org/validation/2017/FAQs#types>.

The following versions of software and data (see [references ⓘ](#)) were used in the production of this report:

MolProbity : 4.02b-467
Mogul : 1.8.5 (274361), CSD as541be (2020)
Xtriage (Phenix) : 1.13
EDS : 2.36
buster-report : 1.1.7 (2018)
Percentile statistics : 20191225.v01 (using entries in the PDB archive December 25th 2019)
Refmac : 5.8.0158
CCP4 : 7.0.044 (Gargrove)
Ideal geometry (proteins) : Engh & Huber (2001)
Ideal geometry (DNA, RNA) : Parkinson et al. (1996)
Validation Pipeline (wwPDB-VP) : 2.36

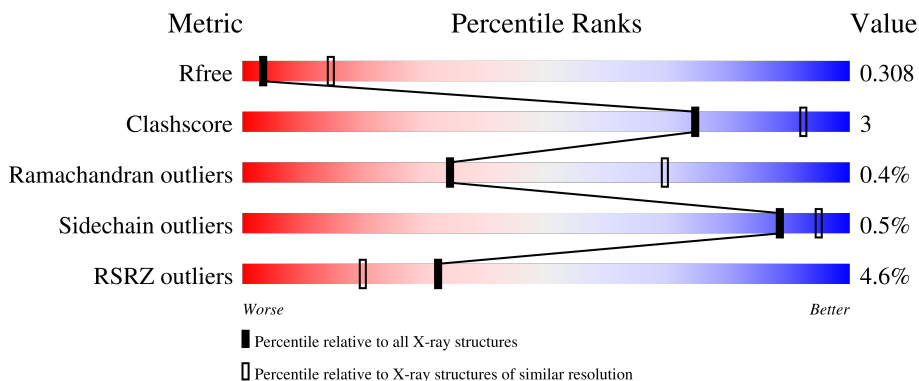
1 Overall quality at a glance

The following experimental techniques were used to determine the structure:

X-RAY DIFFRACTION

The reported resolution of this entry is 3.20 Å.

Percentile scores (ranging between 0-100) for global validation metrics of the entry are shown in the following graphic. The table shows the number of entries on which the scores are based.



Metric	Whole archive (#Entries)	Similar resolution (#Entries, resolution range(Å))
R_{free}	130704	1133 (3.20-3.20)
Clashscore	141614	1253 (3.20-3.20)
Ramachandran outliers	138981	1234 (3.20-3.20)
Sidechain outliers	138945	1233 (3.20-3.20)
RSRZ outliers	127900	1095 (3.20-3.20)

The table below summarises the geometric issues observed across the polymeric chains and their fit to the electron density. The red, orange, yellow and green segments of the lower bar indicate the fraction of residues that contain outliers for ≥ 3 , 2, 1 and 0 types of geometric quality criteria respectively. A grey segment represents the fraction of residues that are not modelled. The numeric value for each fraction is indicated below the corresponding segment, with a dot representing fractions $\leq 5\%$. The upper red bar (where present) indicates the fraction of residues that have poor fit to the electron density. The numeric value is given above the bar.

Mol	Chain	Length	Quality of chain
1	A	1072	 3% (red), 84% (green), 8% (yellow), 8% (grey)
1	C	1072	 2% (red), 83% (green), 9% (yellow), 8% (grey)
2	B	279	 11% (red), 66% (green), 9% (yellow), 14% (grey)
2	D	279	 10% (red), 72% (green), 8% (yellow), 10% (grey)

2 Entry composition i

There are 6 unique types of molecules in this entry. The entry contains 20052 atoms, of which 0 are hydrogens and 0 are deuteriums.

In the tables below, the ZeroOcc column contains the number of atoms modelled with zero occupancy, the AltConf column contains the number of residues with at least one atom in alternate conformation and the Trace column contains the number of residues modelled with at most 2 atoms.

- Molecule 1 is a protein called Phosphatidylinositol 4,5-bisphosphate 3-kinase catalytic subunit alpha isoform.

Mol	Chain	Residues	Atoms					ZeroOcc	AltConf	Trace
			Total	C	N	O	S			
1	A	990	Total	C	N	O	S	0	0	0
			8097	5183	1377	1469	68			
1	C	988	Total	C	N	O	S	0	0	0
			8083	5175	1375	1465	68			

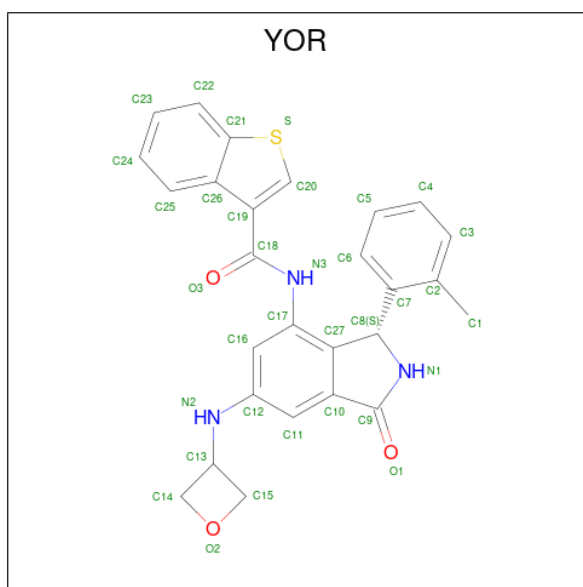
There are 10 discrepancies between the modelled and reference sequences:

Chain	Residue	Modelled	Actual	Comment	Reference
A	-3	ALA	-	expression tag	UNP P42336
A	-2	MET	-	expression tag	UNP P42336
A	-1	GLY	-	expression tag	UNP P42336
A	0	SER	-	expression tag	UNP P42336
A	1047	ARG	HIS	engineered mutation	UNP P42336
C	-3	ALA	-	expression tag	UNP P42336
C	-2	MET	-	expression tag	UNP P42336
C	-1	GLY	-	expression tag	UNP P42336
C	0	SER	-	expression tag	UNP P42336
C	1047	ARG	HIS	engineered mutation	UNP P42336

- Molecule 2 is a protein called Phosphatidylinositol 3-kinase regulatory subunit alpha.

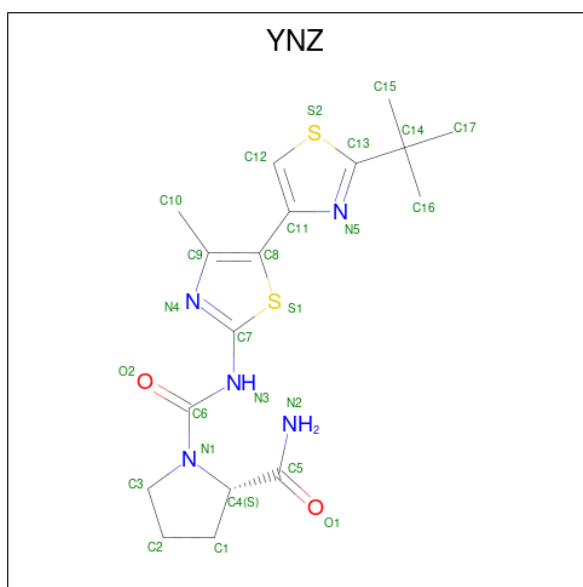
Mol	Chain	Residues	Atoms					ZeroOcc	AltConf	Trace
			Total	C	N	O	S			
2	B	212	Total	C	N	O	S	0	0	0
			1818	1140	326	347	5			
2	D	222	Total	C	N	O	S	0	0	0
			1903	1193	341	364	5			

- Molecule 3 is N-{(3S)-3-(2-methylphenyl)-6-[(oxetan-3-yl)amino]-1-oxo-2,3-dihydro-1H-isoindol-4-yl}-1-benzothiophene-3-carboxamide (three-letter code: YOR) (formula: C₂₇H₂₃N₃O₃S) (labeled as "Ligand of Interest" by depositor).



Mol	Chain	Residues	Atoms					ZeroOcc	AltConf
			Total	C	N	O	S		
3	A	1	Total	C	N	O	S	0	0
			34	27	3	3	1		
3	C	1	Total	C	N	O	S	0	0
			34	27	3	3	1		

- Molecule 4 is (2S)-N 1 -[(4P)-2-tert-butyl-4'-methyl[4,5'-bi-1,3-thiazol]-2'-yl]pyrrolidine-1, 2-dicarboxamide (three-letter code: YNZ) (formula: C₁₇H₂₃N₅O₂S₂) (labeled as "Ligand of Interest" by depositor).



Mol	Chain	Residues	Atoms					ZeroOcc	AltConf
			Total	C	N	O	S		
4	A	1	Total	C	N	O	S	0	0
			26	17	5	2	2		

Continued on next page...

Continued from previous page...

Mol	Chain	Residues	Atoms					ZeroOcc	AltConf
4	C	1	Total	C	N	O	S	0	0
			26	17	5	2	2		

- Molecule 5 is CHLORIDE ION (three-letter code: CL) (formula: Cl) (labeled as "Ligand of Interest" by depositor).

Mol	Chain	Residues	Atoms		ZeroOcc	AltConf
5	C	1	Total	Cl	0	0
			1	1		

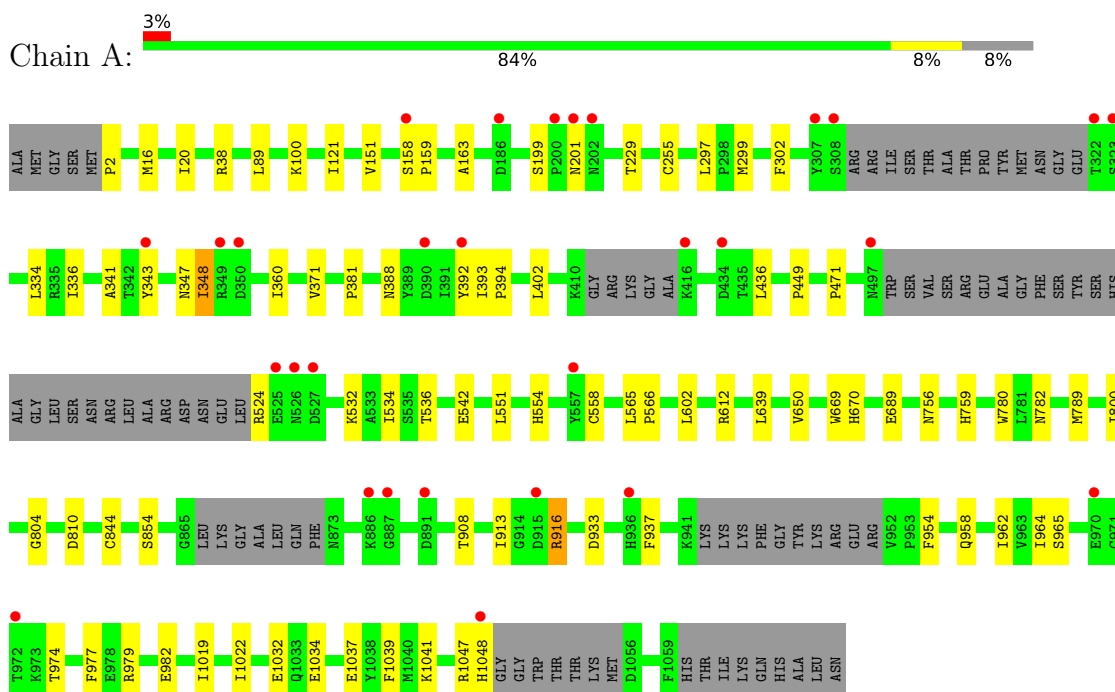
- Molecule 6 is water.

Mol	Chain	Residues	Atoms		ZeroOcc	AltConf
6	A	12	Total	O	0	0
			12	12		
6	C	17	Total	O	0	0
			17	17		
6	D	1	Total	O	0	0
			1	1		

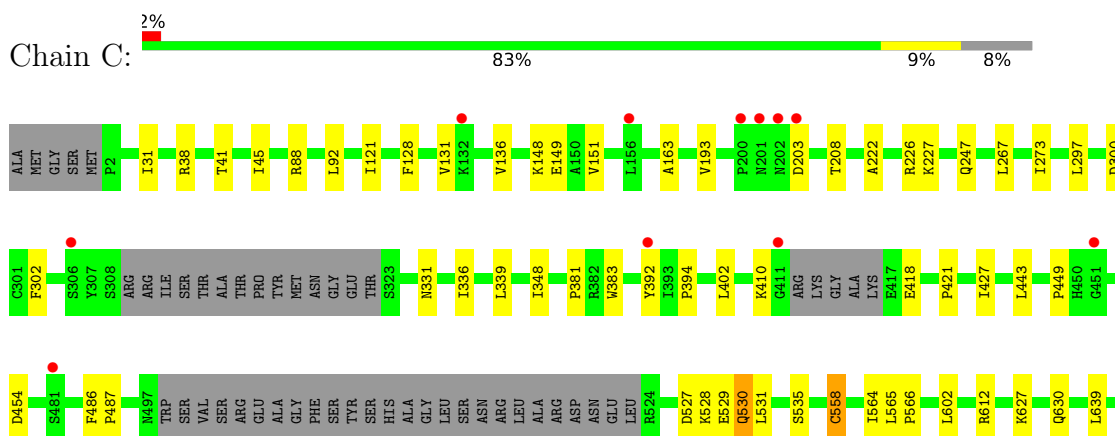
3 Residue-property plots [i](#)

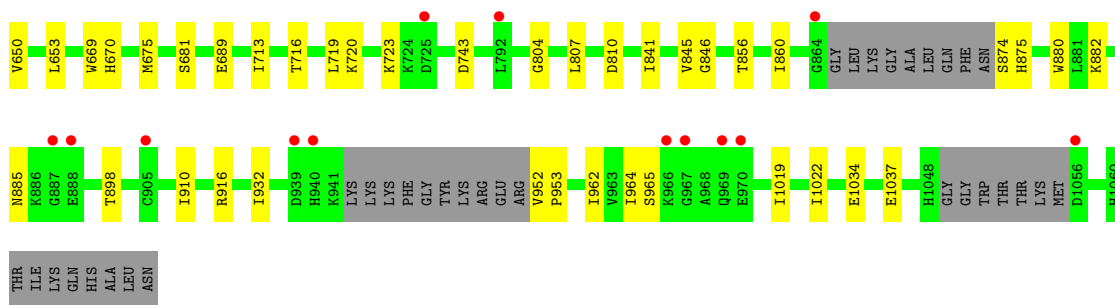
These plots are drawn for all protein, RNA, DNA and oligosaccharide chains in the entry. The first graphic for a chain summarises the proportions of the various outlier classes displayed in the second graphic. The second graphic shows the sequence view annotated by issues in geometry and electron density. Residues are color-coded according to the number of geometric quality criteria for which they contain at least one outlier: green = 0, yellow = 1, orange = 2 and red = 3 or more. A red dot above a residue indicates a poor fit to the electron density ($RSRZ > 2$). Stretches of 2 or more consecutive residues without any outlier are shown as a green connector. Residues present in the sample, but not in the model, are shown in grey.

- Molecule 1: Phosphatidylinositol 4,5-bisphosphate 3-kinase catalytic subunit alpha isoform

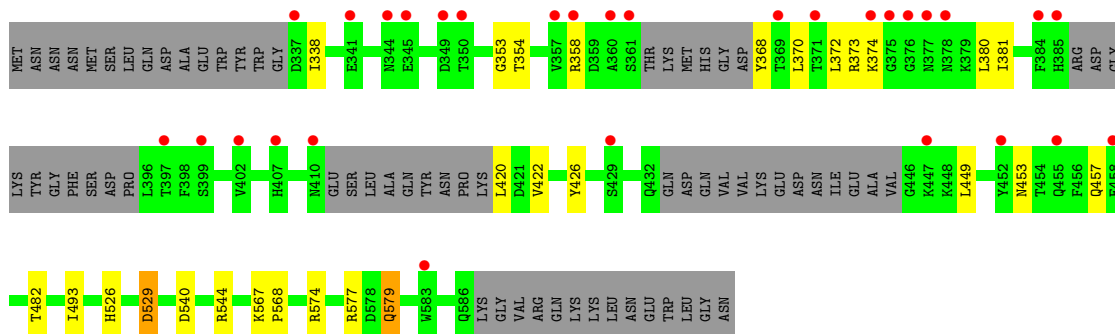


- Molecule 1: Phosphatidylinositol 4,5-bisphosphate 3-kinase catalytic subunit alpha isoform

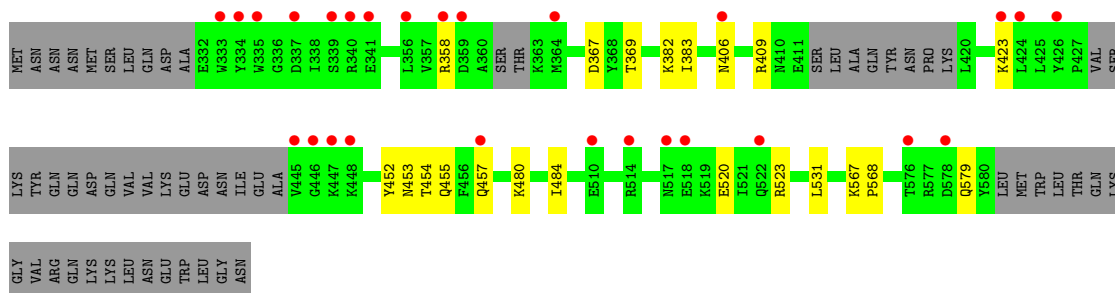




- Molecule 2: Phosphatidylinositol 3-kinase regulatory subunit alpha



- Molecule 2: Phosphatidylinositol 3-kinase regulatory subunit alpha



4 Data and refinement statistics

Property	Value	Source
Space group	P 1 21 1	Depositor
Cell constants a, b, c, α , β , γ	83.56Å 124.07Å 166.47Å 90.00° 93.57° 90.00°	Depositor
Resolution (Å)	19.99 – 3.20 19.99 – 3.20	Depositor EDS
% Data completeness (in resolution range)	99.2 (19.99-3.20) 99.6 (19.99-3.20)	Depositor EDS
R_{merge}	(Not available)	Depositor
R_{sym}	(Not available)	Depositor
$\langle I/\sigma(I) \rangle$ ¹	3.23 (at 3.22Å)	Xtrriage
Refinement program	REFMAC 5.8.0267	Depositor
R, R_{free}	0.277 , 0.310 0.275 , 0.308	Depositor DCC
R_{free} test set	2737 reflections (4.92%)	wwPDB-VP
Wilson B-factor (Å ²)	79.9	Xtrriage
Anisotropy	0.509	Xtrriage
Bulk solvent k_{sol} (e/Å ³), B_{sol} (Å ²)	0.28 , 35.0	EDS
L-test for twinning ²	$\langle L \rangle = 0.49$, $\langle L^2 \rangle = 0.32$	Xtrriage
Estimated twinning fraction	No twinning to report.	Xtrriage
F_o, F_c correlation	0.89	EDS
Total number of atoms	20052	wwPDB-VP
Average B, all atoms (Å ²)	93.0	wwPDB-VP

Xtrriage's analysis on translational NCS is as follows: *The largest off-origin peak in the Patterson function is 3.88% of the height of the origin peak. No significant pseudotranslation is detected.*

¹Intensities estimated from amplitudes.

²Theoretical values of $\langle |L| \rangle$, $\langle L^2 \rangle$ for acentric reflections are 0.5, 0.333 respectively for untwinned datasets, and 0.375, 0.2 for perfectly twinned datasets.

5 Model quality

5.1 Standard geometry

Bond lengths and bond angles in the following residue types are not validated in this section: YOR, CL, YNZ

The Z score for a bond length (or angle) is the number of standard deviations the observed value is removed from the expected value. A bond length (or angle) with $|Z| > 5$ is considered an outlier worth inspection. RMSZ is the root-mean-square of all Z scores of the bond lengths (or angles).

Mol	Chain	Bond lengths		Bond angles	
		RMSZ	# Z >5	RMSZ	# Z >5
1	A	0.69	0/8277	0.69	0/11187
1	C	0.71	0/8264	0.69	0/11170
2	B	0.69	0/1841	0.72	0/2455
2	D	0.74	0/1933	0.70	0/2580
All	All	0.70	0/20315	0.70	0/27392

Chiral center outliers are detected by calculating the chiral volume of a chiral center and verifying if the center is modelled as a planar moiety or with the opposite hand. A planarity outlier is detected by checking planarity of atoms in a peptide group, atoms in a mainchain group or atoms of a sidechain that are expected to be planar.

Mol	Chain	#Chirality outliers	#Planarity outliers
1	A	0	1
2	B	0	1
All	All	0	2

There are no bond length outliers.

There are no bond angle outliers.

There are no chirality outliers.

All (2) planarity outliers are listed below:

Mol	Chain	Res	Type	Group
1	A	782	ASN	Mainchain
2	B	529	ASP	Mainchain

5.2 Too-close contacts [i](#)

In the following table, the Non-H and H(model) columns list the number of non-hydrogen atoms and hydrogen atoms in the chain respectively. The H(added) column lists the number of hydrogen atoms added and optimized by MolProbity. The Clashes column lists the number of clashes within the asymmetric unit, whereas Symm-Clashes lists symmetry-related clashes.

Mol	Chain	Non-H	H(model)	H(added)	Clashes	Symm-Clashes
1	A	8097	0	8110	45	0
1	C	8083	0	8091	58	0
2	B	1818	0	1822	18	0
2	D	1903	0	1877	12	0
3	A	34	0	0	0	0
3	C	34	0	0	0	0
4	A	26	0	0	1	0
4	C	26	0	0	1	0
5	C	1	0	0	0	0
6	A	12	0	0	0	0
6	C	17	0	0	0	0
6	D	1	0	0	0	0
All	All	20052	0	19900	129	0

The all-atom clashscore is defined as the number of clashes found per 1000 atoms (including hydrogen atoms). The all-atom clashscore for this structure is 3.

All (129) close contacts within the same asymmetric unit are listed below, sorted by their clash magnitude.

Atom-1	Atom-2	Interatomic distance (Å)	Clash overlap (Å)
1:A:343:TYR:HB2	1:A:471:PRO:HA	1.59	0.83
2:B:353:GLY:N	2:B:373:ARG:O	2.15	0.78
1:C:131:VAL:HG21	1:C:136:VAL:HG11	1.66	0.78
2:B:354:THR:HG22	2:B:426:TYR:HB3	1.71	0.72
1:A:916:ARG:NH2	1:A:933:ASP:O	2.23	0.71
1:C:128:PHE:O	1:C:131:VAL:HG22	1.94	0.67
1:A:347:ASN:O	1:A:348:ILE:HG22	1.96	0.66
2:B:574:ARG:O	2:B:577:ARG:HB3	1.97	0.63
1:C:529:GLU:C	1:C:531:LEU:H	2.03	0.61
1:C:348:ILE:HG22	1:C:348:ILE:O	2.01	0.61
1:A:958:GLN:O	1:A:962:ILE:HG12	2.01	0.61
1:C:1019:ILE:O	1:C:1022:ILE:HG22	1.99	0.61
1:A:199:SER:O	1:A:201:ASN:O	2.19	0.60
1:A:602:LEU:O	1:A:612:ARG:NH2	2.36	0.58
1:A:16:MET:HB3	1:A:20:ILE:HD11	1.86	0.58

Continued on next page...

Continued from previous page...

Atom-1	Atom-2	Interatomic distance (Å)	Clash overlap (Å)
2:B:526:HIS:O	2:B:529:ASP:HB2	2.03	0.57
1:C:602:LEU:O	1:C:612:ARG:NH2	2.38	0.57
1:C:41:THR:O	1:C:45:ILE:HG12	2.04	0.57
1:C:421:PRO:HG3	1:C:454:ASP:O	2.05	0.57
1:C:962:ILE:HG22	1:C:962:ILE:O	2.03	0.56
1:C:410:LYS:HB3	1:C:418:GLU:HB3	1.88	0.56
1:C:874:SER:O	1:C:875:HIS:HB2	2.06	0.56
2:B:453:ASN:O	2:B:457:GLN:HG2	2.06	0.56
1:C:558:CYS:SG	1:C:564:ILE:HD11	2.46	0.56
1:C:151:VAL:HG21	1:C:302:PHE:HB2	1.88	0.55
1:C:131:VAL:HG21	1:C:136:VAL:CG1	2.37	0.54
2:B:449:LEU:HD13	2:B:579:GLN:CD	2.28	0.54
1:C:713:ILE:HG12	1:C:845:VAL:HG11	1.90	0.53
1:A:1047:ARG:O	1:A:1048:HIS:HB2	2.08	0.53
1:A:121:ILE:HD11	1:A:689:GLU:HA	1.90	0.53
2:D:453:ASN:O	2:D:457:GLN:HG2	2.09	0.53
1:C:193:VAL:HG22	1:C:208:THR:HG22	1.91	0.53
1:C:121:ILE:HD11	1:C:689:GLU:HA	1.89	0.53
1:A:974:THR:H	1:A:977:PHE:HB3	1.74	0.53
1:A:542:GLU:HB2	2:B:380:LEU:CD1	2.38	0.52
1:A:2:PRO:HG2	2:B:482:THR:HG22	1.92	0.52
1:C:860:ILE:HD12	1:C:880:TRP:CD2	2.43	0.52
1:C:841:ILE:HG13	1:C:845:VAL:HG23	1.92	0.52
1:A:1019:ILE:O	1:A:1022:ILE:HG22	2.10	0.51
1:A:804:GLY:C	1:A:844:CYS:HB3	2.31	0.51
1:C:898:THR:HG22	1:C:964:ILE:HD13	1.92	0.51
1:C:163:ALA:HB2	1:C:297:LEU:HD11	1.92	0.51
1:A:908:THR:HA	1:A:913:ILE:HG13	1.93	0.50
1:A:255:CYS:SG	1:A:789:MET:CE	3.00	0.50
2:B:372:LEU:HD21	2:B:374:LYS:HD2	1.93	0.50
1:A:38:ARG:O	1:A:89:LEU:HB3	2.12	0.50
1:A:151:VAL:HG11	1:A:302:PHE:HB3	1.92	0.49
2:D:406:ASN:HA	2:D:409:ARG:HB3	1.93	0.49
1:A:163:ALA:HB2	1:A:297:LEU:HD11	1.92	0.49
1:C:720:LYS:HZ1	1:C:804:GLY:HA3	1.76	0.49
1:A:229:THR:O	1:A:229:THR:HG22	2.12	0.49
1:C:565:LEU:N	1:C:566:PRO:HD2	2.28	0.49
1:A:565:LEU:N	1:A:566:PRO:HD2	2.27	0.48
1:A:534:ILE:HD12	1:A:551:LEU:HD11	1.95	0.48
1:C:962:ILE:O	1:C:962:ILE:CG2	2.61	0.48
2:D:520:GLU:O	2:D:523:ARG:N	2.39	0.48

Continued on next page...

Continued from previous page...

Atom-1	Atom-2	Interatomic distance (Å)	Clash overlap (Å)
1:A:392:TYR:CD2	1:A:394:PRO:HD2	2.48	0.48
1:C:226:ARG:O	1:C:227:LYS:C	2.51	0.48
2:D:358:ARG:HB3	2:D:369:THR:HG1	1.78	0.48
1:A:158:SER:N	1:A:159:PRO:HD2	2.28	0.48
1:C:882:LYS:O	1:C:885:ASN:O	2.32	0.48
1:A:954:PHE:HZ	1:A:1039:PHE:CE1	2.33	0.47
2:B:567:LYS:N	2:B:568:PRO:HD2	2.29	0.47
1:C:88:ARG:O	1:C:92:LEU:HG	2.16	0.46
2:D:480:LYS:O	2:D:484:ILE:HD13	2.15	0.46
1:C:392:TYR:CD2	1:C:394:PRO:HD2	2.52	0.45
1:C:529:GLU:C	1:C:531:LEU:N	2.70	0.45
1:A:341:ALA:O	1:A:381:PRO:HG2	2.16	0.45
1:C:527:ASP:O	1:C:530:GLN:HB2	2.16	0.45
1:A:639:LEU:HD22	1:A:650:VAL:CG1	2.46	0.44
2:D:358:ARG:HB3	2:D:369:THR:OG1	2.17	0.44
2:D:369:THR:HG22	2:D:382:LYS:HG2	1.99	0.44
1:A:336:ILE:HD13	1:A:402:LEU:HD22	2.00	0.44
1:C:916:ARG:NH1	1:C:932:ILE:O	2.50	0.44
1:A:780:TRP:CE3	1:A:800:ILE:HD11	2.53	0.44
1:C:856:THR:O	1:C:860:ILE:HG12	2.18	0.43
4:C:1102:YNZ:S1	4:C:1102:YNZ:O2	2.75	0.43
2:D:452:TYR:O	2:D:455:GLN:HB2	2.18	0.43
1:C:675:MET:HE1	1:C:681:SER:O	2.19	0.43
1:C:719:LEU:HA	1:C:723:LYS:HB2	2.01	0.43
1:A:1037:GLU:O	1:A:1041:LYS:HG2	2.18	0.43
1:C:486:PHE:CG	1:C:487:PRO:HD2	2.53	0.43
2:B:358:ARG:O	2:B:368:TYR:HA	2.19	0.43
1:A:524:ARG:HD2	1:A:554:HIS:NE2	2.34	0.43
1:A:916:ARG:NH1	1:A:937:PHE:HB2	2.34	0.43
1:A:371:VAL:HG11	1:A:388:ASN:O	2.18	0.43
2:B:579:GLN:HE21	2:B:579:GLN:HA	1.84	0.43
1:C:427:ILE:HD11	1:C:443:LEU:HD22	2.01	0.43
1:A:2:PRO:CG	2:B:482:THR:HG22	2.49	0.42
1:A:964:ILE:HD12	1:A:965:SER:N	2.33	0.42
2:B:574:ARG:O	2:B:577:ARG:N	2.49	0.42
1:C:528:LYS:O	1:C:531:LEU:N	2.52	0.42
2:D:367:ASP:HB3	2:D:383:ILE:O	2.18	0.42
2:D:567:LYS:N	2:D:568:PRO:HD2	2.34	0.42
1:C:38:ARG:NH1	1:C:743:ASP:OD2	2.52	0.42
1:A:756:ASN:HD22	1:A:759:HIS:CE1	2.37	0.42
2:B:540:ASP:O	2:B:544:ARG:N	2.43	0.42

Continued on next page...

Continued from previous page...

Atom-1	Atom-2	Interatomic distance (Å)	Clash overlap (Å)
1:C:348:ILE:O	1:C:348:ILE:CG2	2.68	0.42
1:A:979:ARG:O	1:A:982:GLU:N	2.53	0.42
1:C:627:LYS:O	1:C:630:GLN:HB3	2.20	0.42
1:C:910:ILE:HG22	1:C:1022:ILE:HD11	2.02	0.42
1:C:331:ASN:O	1:C:392:TYR:CE1	2.73	0.41
1:C:639:LEU:HD21	1:C:653:LEU:HD12	2.02	0.41
1:A:393:ILE:HB	1:A:394:PRO:HD3	2.03	0.41
1:A:669:TRP:O	1:A:670:HIS:C	2.59	0.41
1:C:148:LYS:O	1:C:149:GLU:C	2.59	0.41
1:C:952:VAL:HA	1:C:953:PRO:HD3	1.94	0.41
1:C:1034:GLU:O	1:C:1037:GLU:HB2	2.20	0.41
1:A:804:GLY:N	1:A:844:CYS:O	2.39	0.41
1:C:860:ILE:HD12	1:C:880:TRP:CE2	2.55	0.41
2:D:454:THR:O	2:D:457:GLN:HB2	2.20	0.41
1:C:267:LEU:HG	1:C:273:ILE:HG12	2.03	0.41
1:C:535:SER:HB3	1:C:564:ILE:CG2	2.51	0.41
1:A:334:LEU:HD23	1:A:360:ILE:HD13	2.03	0.41
1:C:336:ILE:HD13	1:C:402:LEU:HD22	2.01	0.41
1:C:339:LEU:O	1:C:383:TRP:N	2.47	0.41
1:C:669:TRP:O	1:C:670:HIS:C	2.58	0.41
1:A:100:LYS:HD2	2:B:493:ILE:HG23	2.03	0.41
2:B:370:LEU:HB3	2:B:381:ILE:O	2.21	0.41
1:C:807:LEU:HD22	1:C:846:GLY:HA3	2.03	0.41
1:A:854:SER:O	4:A:1102:YNZ:N2	2.54	0.40
1:C:222:ALA:HB2	1:C:247:GLN:HE21	1.85	0.40
1:C:535:SER:CB	1:C:564:ILE:HG22	2.51	0.40
1:C:716:THR:O	1:C:720:LYS:HG3	2.22	0.40
2:B:420:LEU:O	2:B:422:VAL:HG13	2.21	0.40
1:A:532:LYS:O	1:A:536:THR:HG23	2.22	0.40
1:A:1034:GLU:O	1:A:1037:GLU:HB2	2.22	0.40
1:C:31:ILE:HD12	2:D:531:LEU:HA	2.04	0.40
1:C:639:LEU:HD22	1:C:650:VAL:HG12	2.03	0.40

There are no symmetry-related clashes.

5.3 Torsion angles [i](#)

5.3.1 Protein backbone [i](#)

In the following table, the Percentiles column shows the percent Ramachandran outliers of the chain as a percentile score with respect to all X-ray entries followed by that with respect to entries

of similar resolution.

The Analysed column shows the number of residues for which the backbone conformation was analysed, and the total number of residues.

Mol	Chain	Analysed	Favoured	Allowed	Outliers	Percentiles	
1	A	976/1072 (91%)	920 (94%)	52 (5%)	4 (0%)	34	69
1	C	974/1072 (91%)	913 (94%)	57 (6%)	4 (0%)	34	69
2	B	202/279 (72%)	196 (97%)	5 (2%)	1 (0%)	29	67
2	D	214/279 (77%)	200 (94%)	14 (6%)	0	100	100
All	All	2366/2702 (88%)	2229 (94%)	128 (5%)	9 (0%)	34	69

All (9) Ramachandran outliers are listed below:

Mol	Chain	Res	Type
1	A	299	MET
1	A	348	ILE
1	A	558	CYS
1	C	558	CYS
1	C	530	GLN
1	A	449	PRO
2	B	338	ILE
1	C	381	PRO
1	C	449	PRO

5.3.2 Protein sidechains [i](#)

In the following table, the Percentiles column shows the percent sidechain outliers of the chain as a percentile score with respect to all X-ray entries followed by that with respect to entries of similar resolution.

The Analysed column shows the number of residues for which the sidechain conformation was analysed, and the total number of residues.

Mol	Chain	Analysed	Rotameric	Outliers	Percentiles	
1	A	912/976 (93%)	908 (100%)	4 (0%)	91	95
1	C	910/976 (93%)	906 (100%)	4 (0%)	91	95
2	B	201/259 (78%)	200 (100%)	1 (0%)	88	95
2	D	207/259 (80%)	205 (99%)	2 (1%)	76	90
All	All	2230/2470 (90%)	2219 (100%)	11 (0%)	88	95

All (11) residues with a non-rotameric sidechain are listed below:

Mol	Chain	Res	Type
1	A	436	LEU
1	A	810	ASP
1	A	916	ARG
1	A	1032	GLU
2	B	579	GLN
1	C	203	ASP
1	C	300	ASP
1	C	810	ASP
1	C	965	SER
2	D	423	LYS
2	D	579	GLN

Sometimes sidechains can be flipped to improve hydrogen bonding and reduce clashes. All (21) such sidechains are listed below:

Mol	Chain	Res	Type
1	A	157	ASN
1	A	189	GLN
1	A	212	ASN
1	A	238	GLN
1	A	269	GLN
1	A	347	ASN
1	A	370	ASN
1	A	605	ASN
1	A	760	GLN
1	A	763	ASN
2	B	455	GLN
2	B	564	ASN
1	C	75	GLN
1	C	247	GLN
1	C	269	GLN
1	C	530	GLN
1	C	605	ASN
1	C	756	ASN
1	C	760	GLN
1	C	763	ASN
2	D	564	ASN

5.3.3 RNA [i](#)

There are no RNA molecules in this entry.

5.4 Non-standard residues in protein, DNA, RNA chains [i](#)

There are no non-standard protein/DNA/RNA residues in this entry.

5.5 Carbohydrates [i](#)

There are no monosaccharides in this entry.

5.6 Ligand geometry [i](#)

Of 5 ligands modelled in this entry, 1 is monoatomic - leaving 4 for Mogul analysis.

In the following table, the Counts columns list the number of bonds (or angles) for which Mogul statistics could be retrieved, the number of bonds (or angles) that are observed in the model and the number of bonds (or angles) that are defined in the Chemical Component Dictionary. The Link column lists molecule types, if any, to which the group is linked. The Z score for a bond length (or angle) is the number of standard deviations the observed value is removed from the expected value. A bond length (or angle) with $|Z| > 2$ is considered an outlier worth inspection. RMSZ is the root-mean-square of all Z scores of the bond lengths (or angles).

Mol	Type	Chain	Res	Link	Bond lengths			Bond angles		
					Counts	RMSZ	# Z > 2	Counts	RMSZ	# Z > 2
3	YOR	C	1101	-	35,39,39	1.34	3 (8%)	40,57,57	2.12	8 (20%)
4	YNZ	A	1102	-	21,28,28	1.09	1 (4%)	21,42,42	1.47	7 (33%)
3	YOR	A	1101	-	35,39,39	1.35	3 (8%)	40,57,57	2.11	8 (20%)
4	YNZ	C	1102	-	21,28,28	1.10	1 (4%)	21,42,42	1.48	3 (14%)

In the following table, the Chirals column lists the number of chiral outliers, the number of chiral centers analysed, the number of these observed in the model and the number defined in the Chemical Component Dictionary. Similar counts are reported in the Torsion and Rings columns. '-' means no outliers of that kind were identified.

Mol	Type	Chain	Res	Link	Chirals	Torsions	Rings
3	YOR	C	1101	-	-	3/14/34/34	0/6/6/6
4	YNZ	A	1102	-	-	2/13/32/32	0/3/3/3
3	YOR	A	1101	-	-	5/14/34/34	0/6/6/6
4	YNZ	C	1102	-	-	2/13/32/32	0/3/3/3

All (8) bond length outliers are listed below:

Mol	Chain	Res	Type	Atoms	Z	Observed(Å)	Ideal(Å)
3	A	1101	YOR	C19-C26	6.04	1.47	1.42

Continued on next page...

Continued from previous page...

Mol	Chain	Res	Type	Atoms	Z	Observed(Å)	Ideal(Å)
3	C	1101	YOR	C19-C26	5.79	1.47	1.42
3	C	1101	YOR	C20-C19	-3.84	1.34	1.37
3	A	1101	YOR	C20-C19	-3.71	1.35	1.37
4	C	1102	YNZ	C12-S2	3.68	1.76	1.70
4	A	1102	YNZ	C12-S2	3.65	1.76	1.70
3	C	1101	YOR	C21-S	2.17	1.75	1.74
3	A	1101	YOR	C21-S	2.15	1.75	1.74

All (26) bond angle outliers are listed below:

Mol	Chain	Res	Type	Atoms	Z	Observed(°)	Ideal(°)
3	C	1101	YOR	C10-C9-N1	10.07	110.44	106.49
3	A	1101	YOR	C10-C9-N1	9.88	110.37	106.49
3	A	1101	YOR	C19-C18-N3	3.72	120.35	114.79
3	C	1101	YOR	C19-C18-N3	3.47	119.98	114.79
3	C	1101	YOR	C25-C26-C19	-3.43	130.74	135.63
3	A	1101	YOR	C25-C26-C19	-3.43	130.74	135.63
4	C	1102	YNZ	C1-C4-N1	3.30	107.93	103.03
4	A	1102	YNZ	C1-C4-N1	3.26	107.87	103.03
4	C	1102	YNZ	C11-C12-S2	-3.01	108.09	111.79
3	A	1101	YOR	C11-C10-C9	2.80	132.55	129.66
3	C	1101	YOR	C11-C10-C9	2.76	132.51	129.66
3	A	1101	YOR	C11-C10-C27	-2.52	119.50	122.80
3	C	1101	YOR	C11-C10-C27	-2.43	119.63	122.80
3	A	1101	YOR	C22-C21-S	2.41	129.69	125.07
3	C	1101	YOR	C22-C21-S	2.40	129.67	125.07
3	A	1101	YOR	C19-C20-S	2.39	113.19	112.53
3	C	1101	YOR	C14-O2-C15	2.33	93.42	91.10
4	A	1102	YNZ	C3-N1-C4	-2.32	108.32	112.00
4	A	1102	YNZ	C14-C13-N5	2.31	125.04	122.93
4	C	1102	YNZ	C3-N1-C4	-2.24	108.44	112.00
4	A	1102	YNZ	C11-C12-S2	-2.13	109.18	111.79
4	A	1102	YNZ	C2-C3-N1	2.12	106.97	103.25
4	A	1102	YNZ	C4-C5-N2	2.08	121.61	116.55
4	A	1102	YNZ	O1-C5-N2	-2.07	119.40	123.00
3	C	1101	YOR	C19-C20-S	2.07	113.11	112.53
3	A	1101	YOR	C14-O2-C15	2.05	93.14	91.10

There are no chirality outliers.

All (12) torsion outliers are listed below:

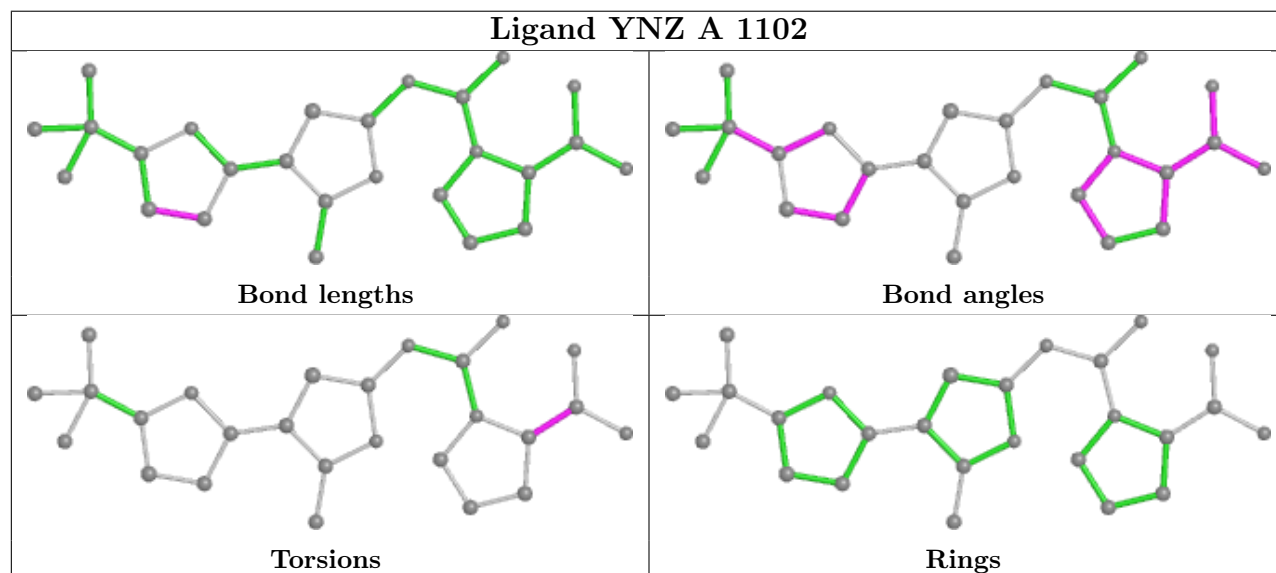
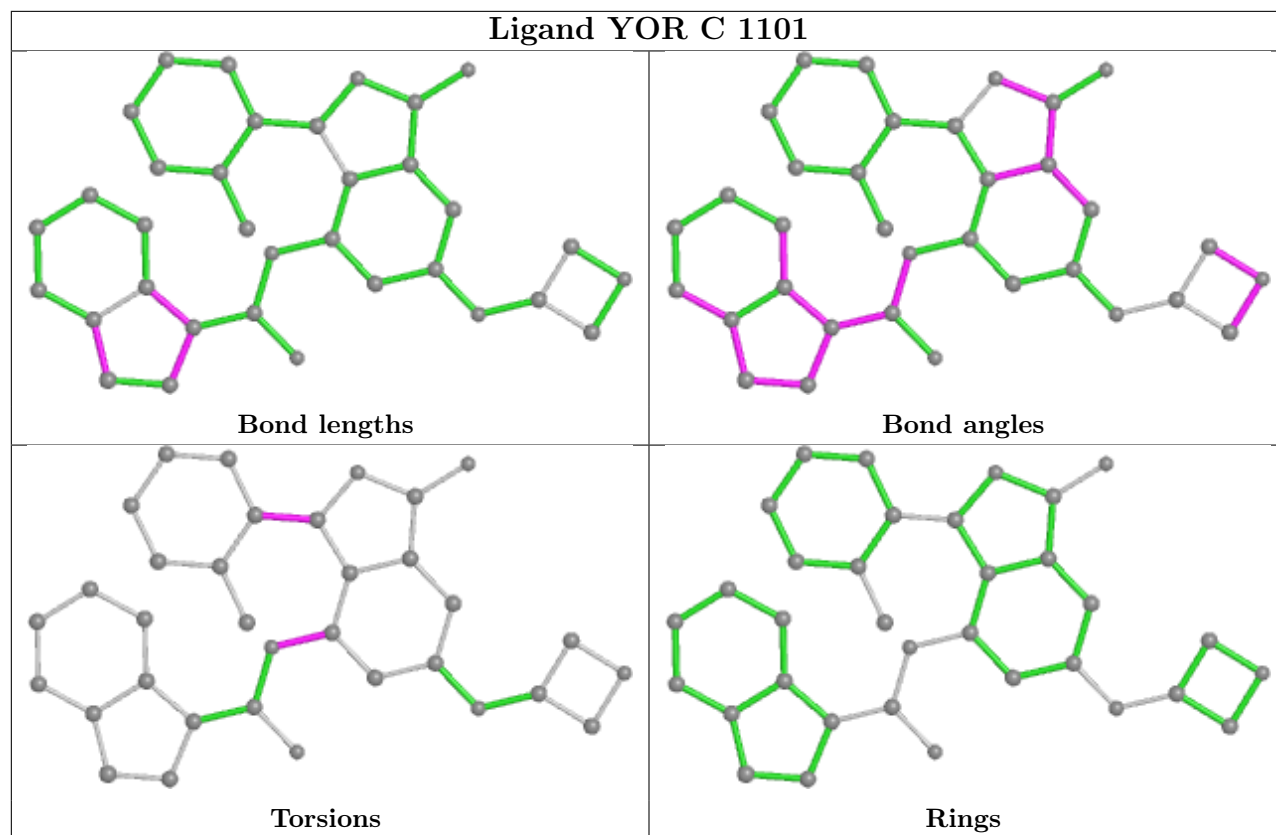
Mol	Chain	Res	Type	Atoms
3	C	1101	YOR	C2-C7-C8-N1
4	A	1102	YNZ	N1-C4-C5-N2
4	A	1102	YNZ	N1-C4-C5-O1
4	C	1102	YNZ	N1-C4-C5-N2
3	C	1101	YOR	C6-C7-C8-N1
3	A	1101	YOR	C2-C7-C8-N1
3	A	1101	YOR	C2-C7-C8-C27
4	C	1102	YNZ	N1-C4-C5-O1
3	A	1101	YOR	C6-C7-C8-N1
3	A	1101	YOR	C16-C17-N3-C18
3	C	1101	YOR	C27-C17-N3-C18
3	A	1101	YOR	C27-C17-N3-C18

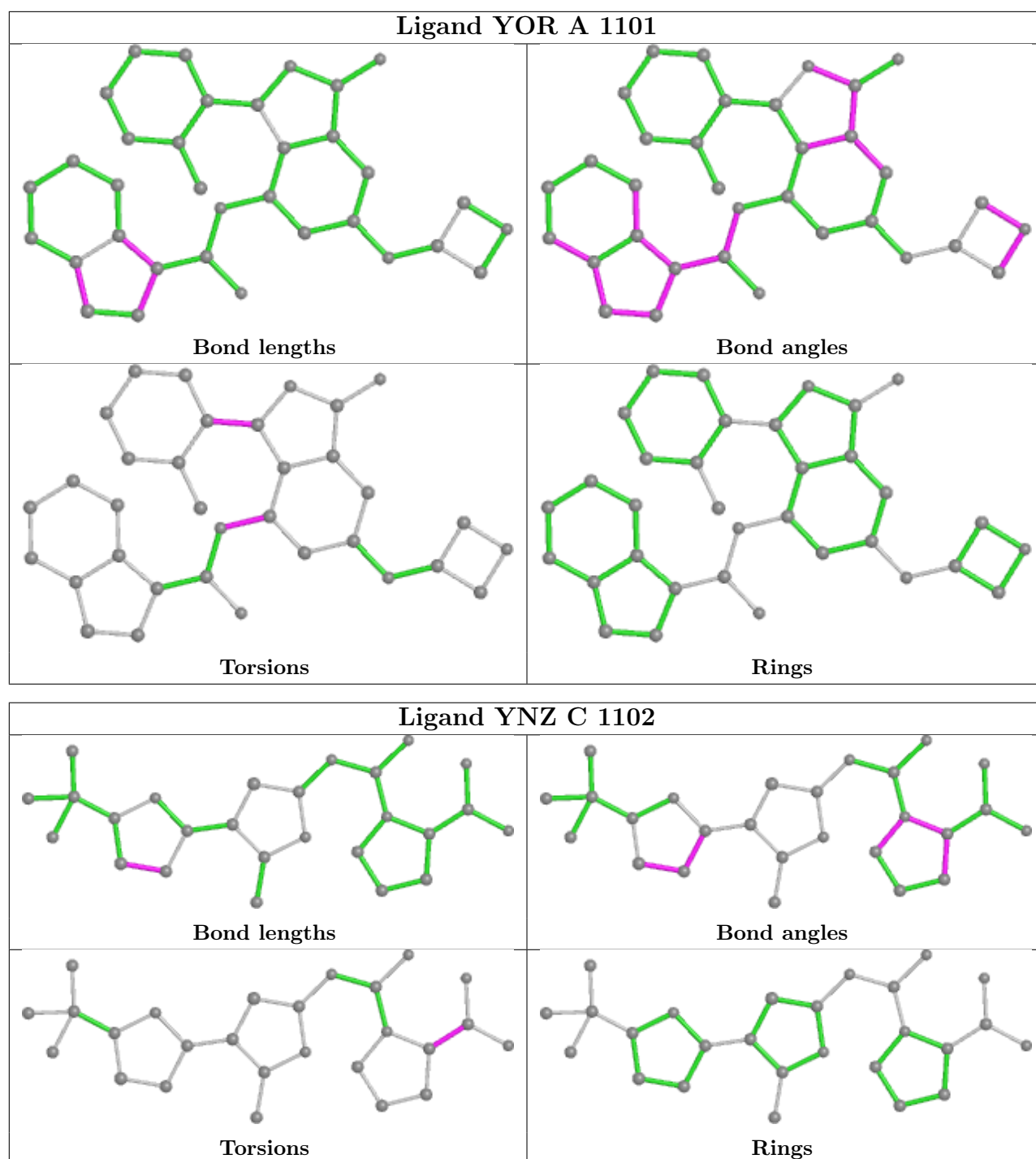
There are no ring outliers.

2 monomers are involved in 2 short contacts:

Mol	Chain	Res	Type	Clashes	Symm-Clashes
4	A	1102	YNZ	1	0
4	C	1102	YNZ	1	0

The following is a two-dimensional graphical depiction of Mogul quality analysis of bond lengths, bond angles, torsion angles, and ring geometry for all instances of the Ligand of Interest. In addition, ligands with molecular weight > 250 and outliers as shown on the validation Tables will also be included. For torsion angles, if less than 5% of the Mogul distribution of torsion angles is within 10 degrees of the torsion angle in question, then that torsion angle is considered an outlier. Any bond that is central to one or more torsion angles identified as an outlier by Mogul will be highlighted in the graph. For rings, the root-mean-square deviation (RMSD) between the ring in question and similar rings identified by Mogul is calculated over all ring torsion angles. If the average RMSD is greater than 60 degrees and the minimal RMSD between the ring in question and any Mogul-identified rings is also greater than 60 degrees, then that ring is considered an outlier. The outliers are highlighted in purple. The color gray indicates Mogul did not find sufficient equivalents in the CSD to analyse the geometry.





5.7 Other polymers [i](#)

There are no such residues in this entry.

5.8 Polymer linkage issues [i](#)

There are no chain breaks in this entry.

6 Fit of model and data

6.1 Protein, DNA and RNA chains

In the following table, the column labelled ‘#RSRZ> 2’ contains the number (and percentage) of RSRZ outliers, followed by percent RSRZ outliers for the chain as percentile scores relative to all X-ray entries and entries of similar resolution. The OWAB column contains the minimum, median, 95th percentile and maximum values of the occupancy-weighted average B-factor per residue. The column labelled ‘Q< 0.9’ lists the number of (and percentage) of residues with an average occupancy less than 0.9.

Mol	Chain	Analysed	<RSRZ>	#RSRZ>2	OWAB(Å ²)	Q<0.9
1	A	990/1072 (92%)	0.16	29 (2%) 51 36	60, 90, 125, 150	0
1	C	988/1072 (92%)	0.02	24 (2%) 59 44	48, 79, 111, 139	0
2	B	212/279 (75%)	0.70	30 (14%) 2 1	67, 126, 168, 176	0
2	D	222/279 (79%)	0.71	27 (12%) 4 2	73, 121, 160, 171	0
All	All	2412/2702 (89%)	0.20	110 (4%) 32 20	48, 87, 145, 176	0

All (110) RSRZ outliers are listed below:

Mol	Chain	Res	Type	RSRZ
1	A	322	THR	9.5
1	A	525	GLU	7.0
2	B	358	ARG	6.9
2	D	423	LYS	6.8
2	D	341	GLU	5.9
2	B	455	GLN	5.8
2	D	445	VAL	5.7
2	D	446	GLY	5.0
2	B	429	SER	4.9
2	D	576	THR	4.7
2	B	341	GLU	4.7
2	D	340	ARG	4.6
2	B	349	ASP	4.3
2	B	376	GLY	4.3
2	D	447	LYS	4.2
1	C	201	ASN	4.2
1	A	308	SER	4.1
1	C	203	ASP	4.0
1	C	725	ASP	3.9
2	B	402	VAL	3.9
2	D	337	ASP	3.9

Continued on next page...

Continued from previous page...

Mol	Chain	Res	Type	RSRZ
1	A	527	ASP	3.8
1	A	200	PRO	3.8
2	B	345	GLU	3.8
1	C	969	GLN	3.7
2	B	344	ASN	3.7
1	A	323	SER	3.7
2	B	337	ASP	3.7
2	B	375	GLY	3.6
1	C	306	SER	3.6
1	A	416	LYS	3.6
1	A	201	ASN	3.5
1	C	411	GLY	3.5
1	A	343	TYR	3.4
2	D	359	ASP	3.4
2	B	447	LYS	3.4
2	B	397	THR	3.3
2	D	335	TRP	3.3
2	B	452	TYR	3.2
2	D	339	SER	3.2
2	B	369	THR	3.1
2	B	361	SER	3.1
2	B	384	PHE	3.0
1	A	886	LYS	3.0
2	B	385	HIS	3.0
2	D	333	TRP	2.9
2	B	377	ASN	2.9
1	A	350	ASP	2.9
2	B	410	ASN	2.9
2	D	448	LYS	2.9
1	A	434	ASP	2.9
1	C	970	GLU	2.8
1	C	200	PRO	2.8
2	B	407	HIS	2.8
2	D	457	GLN	2.8
2	D	514	ARG	2.7
2	B	371	THR	2.7
1	A	887	GLY	2.7
2	D	517	ASN	2.7
1	C	887	GLY	2.6
1	A	970	GLU	2.6
2	D	510	GLU	2.6
1	A	390	ASP	2.6

Continued on next page...

Continued from previous page...

Mol	Chain	Res	Type	RSRZ
2	D	578	ASP	2.6
2	B	583	TRP	2.6
1	A	891	ASP	2.6
2	D	426	TYR	2.6
2	D	406	ASN	2.6
1	C	939	ASP	2.5
1	A	526	ASN	2.5
1	C	966	LYS	2.5
1	C	864	GLY	2.5
1	A	497	ASN	2.5
2	D	358	ARG	2.5
1	C	392	TYR	2.5
2	B	458	GLU	2.4
1	A	1048	HIS	2.4
2	B	399	SER	2.4
2	B	350	THR	2.4
1	C	156	LEU	2.4
1	C	792	LEU	2.4
1	C	481	SER	2.4
2	D	356	LEU	2.3
1	A	307	TYR	2.3
2	D	334	TYR	2.3
2	D	424	LEU	2.3
1	A	972	THR	2.3
1	A	392	TYR	2.3
1	A	936	HIS	2.3
2	D	522	GLN	2.2
1	C	967	GLY	2.2
1	C	888	GLU	2.2
2	B	374	LYS	2.2
1	C	940	HIS	2.2
1	C	1056	ASP	2.2
1	C	451	GLY	2.1
1	A	915	ASP	2.1
1	A	557	TYR	2.1
1	A	202	ASN	2.1
1	A	158	SER	2.1
2	B	378	ASN	2.1
2	D	364	MET	2.1
1	C	132	LYS	2.1
2	B	357	VAL	2.1
1	A	349	ARG	2.1

Continued on next page...

Continued from previous page...

Mol	Chain	Res	Type	RSRZ
2	D	518	GLU	2.1
2	B	360	ALA	2.0
1	C	202	ASN	2.0
1	C	905	CYS	2.0
1	A	186	ASP	2.0

6.2 Non-standard residues in protein, DNA, RNA chains [i](#)

There are no non-standard protein/DNA/RNA residues in this entry.

6.3 Carbohydrates [i](#)

There are no monosaccharides in this entry.

6.4 Ligands [i](#)

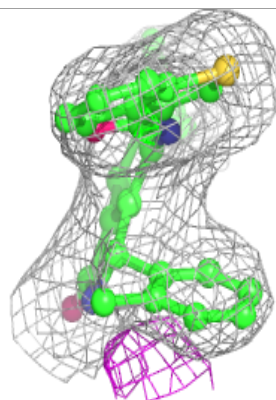
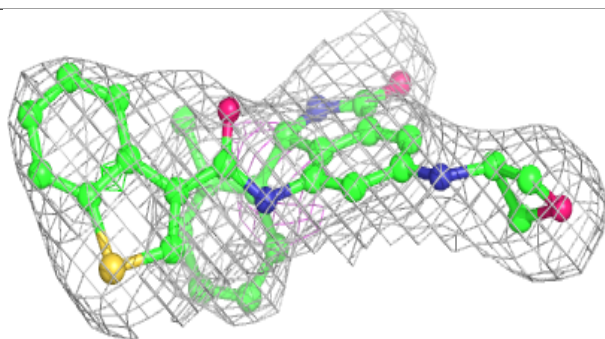
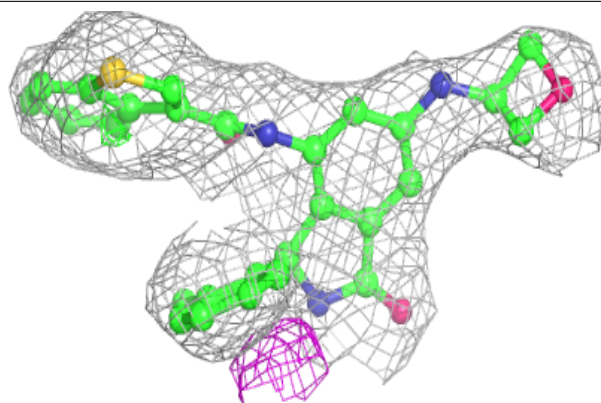
In the following table, the Atoms column lists the number of modelled atoms in the group and the number defined in the chemical component dictionary. The B-factors column lists the minimum, median, 95th percentile and maximum values of B factors of atoms in the group. The column labelled 'Q< 0.9' lists the number of atoms with occupancy less than 0.9.

Mol	Type	Chain	Res	Atoms	RSCC	RSR	B-factors(\AA^2)	Q<0.9
3	YOR	C	1101	34/34	0.86	0.25	60,66,69,70	0
4	YNZ	A	1102	26/26	0.87	0.35	92,97,106,106	0
3	YOR	A	1101	34/34	0.88	0.23	79,80,82,82	0
5	CL	C	1103	1/1	0.88	0.54	69,69,69,69	0
4	YNZ	C	1102	26/26	0.92	0.21	70,71,72,72	0

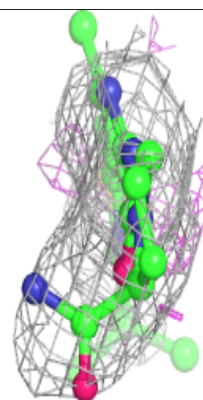
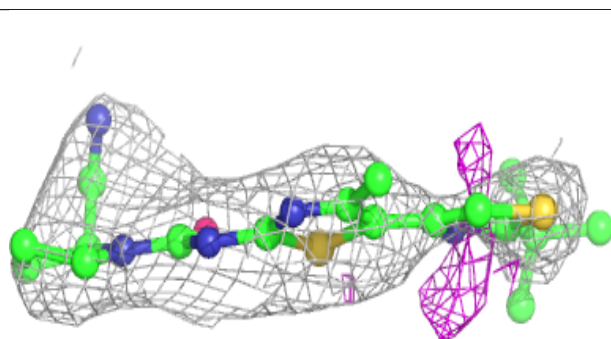
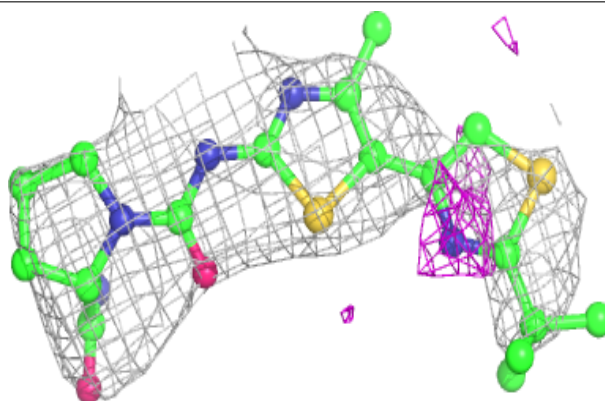
The following is a graphical depiction of the model fit to experimental electron density of all instances of the Ligand of Interest. In addition, ligands with molecular weight > 250 and outliers as shown on the geometry validation Tables will also be included. Each fit is shown from different orientation to approximate a three-dimensional view.

Electron density around YOR C 1101:

$2mF_o-DF_c$ (at 0.7 rmsd) in gray
 mF_o-DF_c (at 3 rmsd) in purple (negative)
and green (positive)

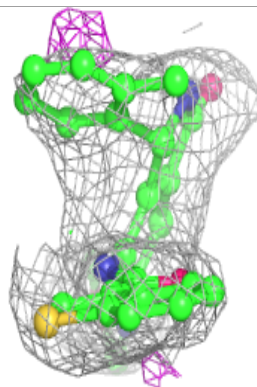
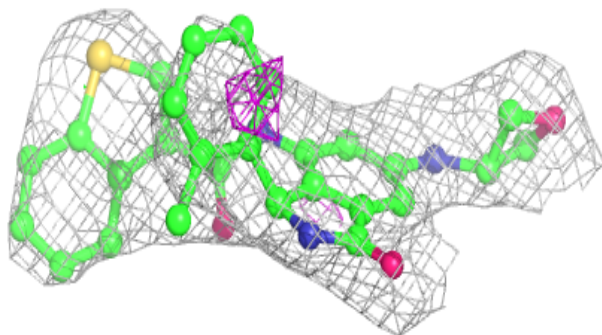
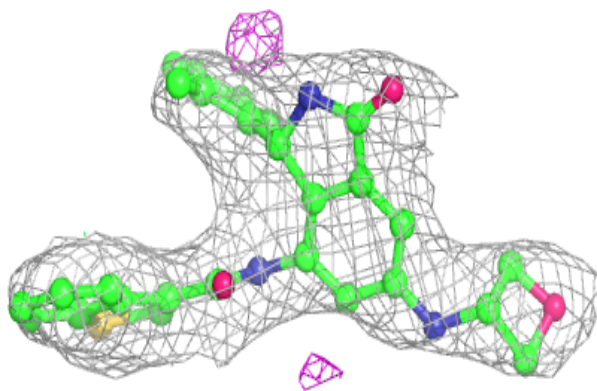
**Electron density around YNZ A 1102:**

$2mF_o-DF_c$ (at 0.7 rmsd) in gray
 mF_o-DF_c (at 3 rmsd) in purple (negative)
and green (positive)



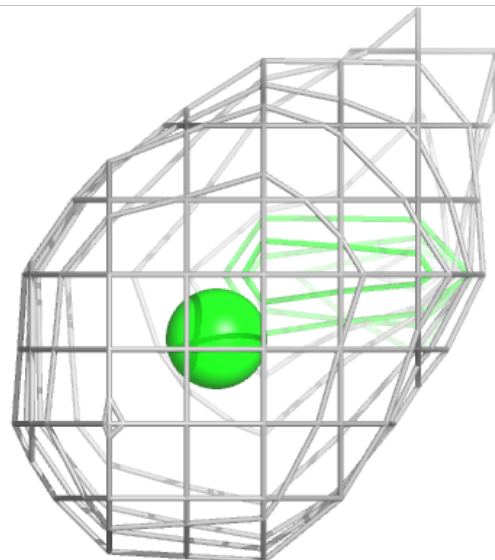
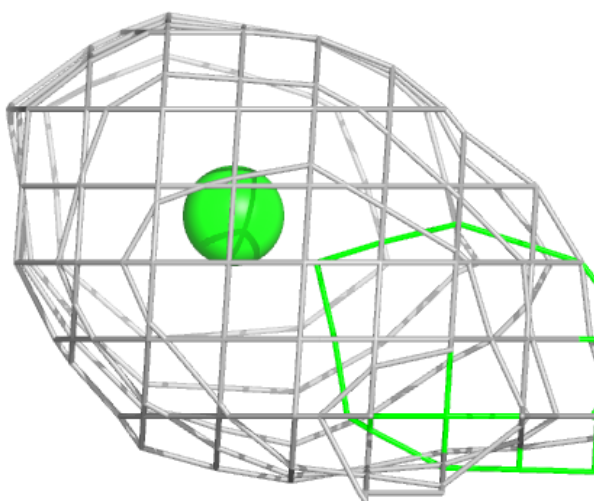
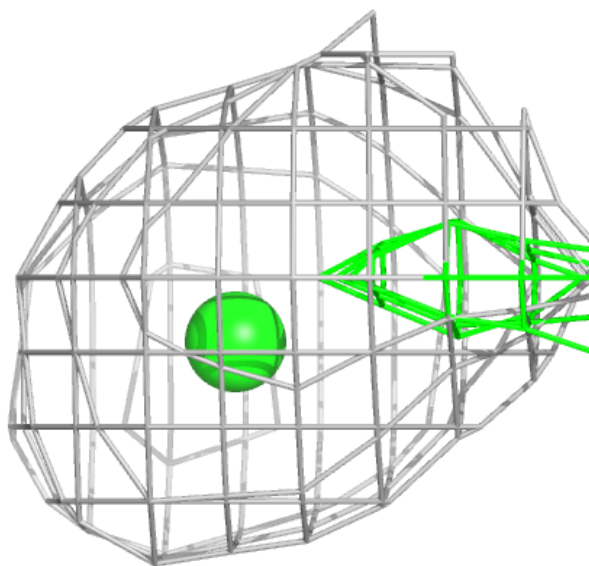
Electron density around YOR A 1101:

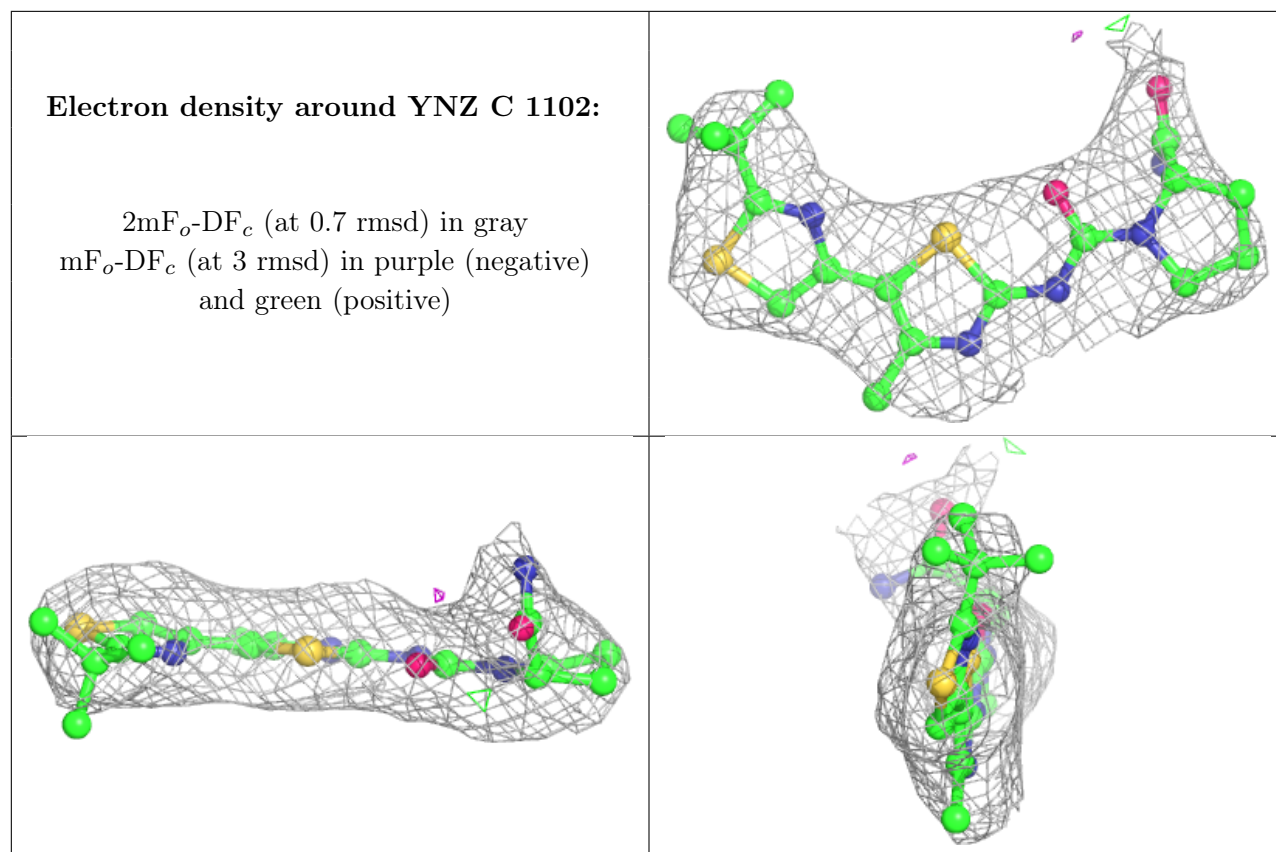
$2mF_o-DF_c$ (at 0.7 rmsd) in gray
 mF_o-DF_c (at 3 rmsd) in purple (negative)
and green (positive)



Electron density around CL C 1103:

$2mF_o-DF_c$ (at 0.7 rmsd) in gray
 mF_o-DF_c (at 3 rmsd) in purple (negative)
and green (positive)





6.5 Other polymers [i](#)

There are no such residues in this entry.