



Full wwPDB X-ray Structure Validation Report ⓘ

Jun 3, 2024 – 03:15 PM EDT

PDB ID : 8UKW
Title : Crystal structure the extracellular region of the epidermal growth factor receptor variant III (EGFRvIII) at pH 5.0
Authors : Stayrook, S.E.; Ferguson, K.M.
Deposited on : 2023-10-15
Resolution : 2.39 Å(reported)

This is a Full wwPDB X-ray Structure Validation Report for a publicly released PDB entry.

We welcome your comments at validation@mail.wwpdb.org

A user guide is available at

<https://www.wwpdb.org/validation/2017/XrayValidationReportHelp>

with specific help available everywhere you see the ⓘ symbol.

The types of validation reports are described at

<http://www.wwpdb.org/validation/2017/FAQs#types>.

The following versions of software and data (see [references ⓘ](#)) were used in the production of this report:

MolProbity : 4.02b-467
Mogul : 1.8.5 (274361), CSD as541be (2020)
Xtriage (Phenix) : 1.13
EDS : 2.36.2
Percentile statistics : 20191225.v01 (using entries in the PDB archive December 25th 2019)
Refmac : 5.8.0158
CCP4 : 7.0.044 (Gargrove)
Ideal geometry (proteins) : Engh & Huber (2001)
Ideal geometry (DNA, RNA) : Parkinson et al. (1996)
Validation Pipeline (wwPDB-VP) : 2.36.2

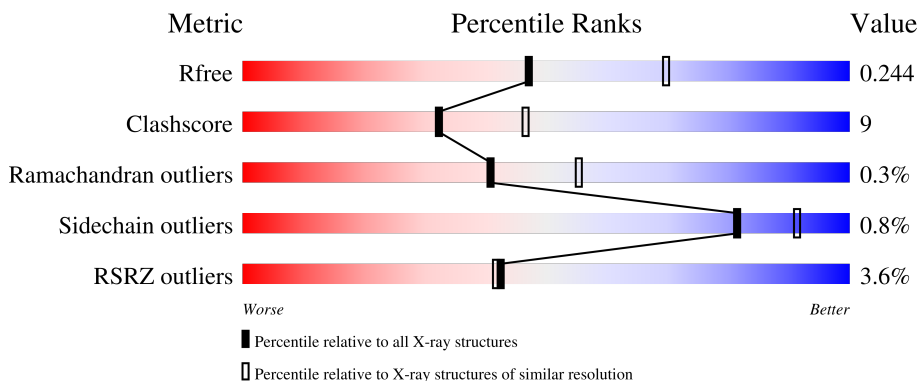
1 Overall quality at a glance

The following experimental techniques were used to determine the structure:

X-RAY DIFFRACTION

The reported resolution of this entry is 2.39 Å.

Percentile scores (ranging between 0-100) for global validation metrics of the entry are shown in the following graphic. The table shows the number of entries on which the scores are based.



Metric	Whole archive (#Entries)	Similar resolution (#Entries, resolution range(Å))
R_{free}	130704	3907 (2.40-2.40)
Clashscore	141614	4398 (2.40-2.40)
Ramachandran outliers	138981	4318 (2.40-2.40)
Sidechain outliers	138945	4319 (2.40-2.40)
RSRZ outliers	127900	3811 (2.40-2.40)

The table below summarises the geometric issues observed across the polymeric chains and their fit to the electron density. The red, orange, yellow and green segments of the lower bar indicate the fraction of residues that contain outliers for ≥ 3 , 2, 1 and 0 types of geometric quality criteria respectively. A grey segment represents the fraction of residues that are not modelled. The numeric value for each fraction is indicated below the corresponding segment, with a dot representing fractions $\leq 5\%$. The upper red bar (where present) indicates the fraction of residues that have poor fit to the electron density. The numeric value is given above the bar.

Mol	Chain	Length	Quality of chain
1	A	357	 2% 76% 9% 13%
1	B	357	 4% 71% 15% 13%
2	C	3	 100%
3	D	2	 50% 50%
3	E	2	 100%

2 Entry composition i

There are 5 unique types of molecules in this entry. The entry contains 4871 atoms, of which 0 are hydrogens and 0 are deuteriums.

In the tables below, the ZeroOcc column contains the number of atoms modelled with zero occupancy, the AltConf column contains the number of residues with at least one atom in alternate conformation and the Trace column contains the number of residues modelled with at most 2 atoms.

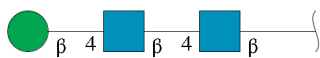
- Molecule 1 is a protein called Epidermal growth factor receptor.

Mol	Chain	Residues	Atoms					ZeroOcc	AltConf	Trace
			Total	C	N	O	S			
1	A	309	2305	1427	418	433	27	0	0	0
1	B	310	2298	1419	414	438	27	0	0	0

There are 16 discrepancies between the modelled and reference sequences:

Chain	Residue	Modelled	Actual	Comment	Reference
A	273	GLY	VAL	engineered mutation	UNP P00533
A	283	SER	CYS	engineered mutation	UNP P00533
A	619	HIS	-	expression tag	UNP P00533
A	620	HIS	-	expression tag	UNP P00533
A	621	HIS	-	expression tag	UNP P00533
A	622	HIS	-	expression tag	UNP P00533
A	623	HIS	-	expression tag	UNP P00533
A	624	HIS	-	expression tag	UNP P00533
B	273	GLY	VAL	engineered mutation	UNP P00533
B	283	SER	CYS	engineered mutation	UNP P00533
B	619	HIS	-	expression tag	UNP P00533
B	620	HIS	-	expression tag	UNP P00533
B	621	HIS	-	expression tag	UNP P00533
B	622	HIS	-	expression tag	UNP P00533
B	623	HIS	-	expression tag	UNP P00533
B	624	HIS	-	expression tag	UNP P00533

- Molecule 2 is an oligosaccharide called beta-D-mannopyranose-(1-4)-2-acetamido-2-deoxy-beta-D-glucopyranose-(1-4)-2-acetamido-2-deoxy-beta-D-glucopyranose.



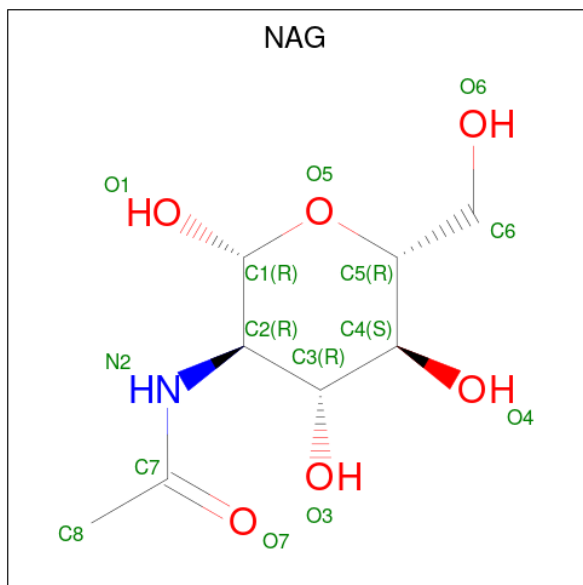
Mol	Chain	Residues	Atoms				ZeroOcc	AltConf	Trace
			Total	C	N	O			
2	C	3	39	22	2	15	0	0	0

- Molecule 3 is an oligosaccharide called 2-acetamido-2-deoxy-beta-D-glucopyranose-(1-4)-2-acetamido-2-deoxy-beta-D-glucopyranose.



Mol	Chain	Residues	Atoms				ZeroOcc	AltConf	Trace
			Total	C	N	O			
3	D	2	28	16	2	10	0	0	0
3	E	2	28	16	2	10	0	0	0

- Molecule 4 is 2-acetamido-2-deoxy-beta-D-glucopyranose (three-letter code: NAG) (formula: C₈H₁₅NO₆).



Mol	Chain	Residues	Atoms				ZeroOcc	AltConf
			Total	C	N	O		
4	A	1	14	8	1	5	0	0
4	A	1	14	8	1	5	0	0
4	B	1	14	8	1	5	0	0

Continued on next page...

Continued from previous page...

Mol	Chain	Residues	Atoms				ZeroOcc	AltConf
			Total	C	N	O		
4	B	1	14	8	1	5	0	0

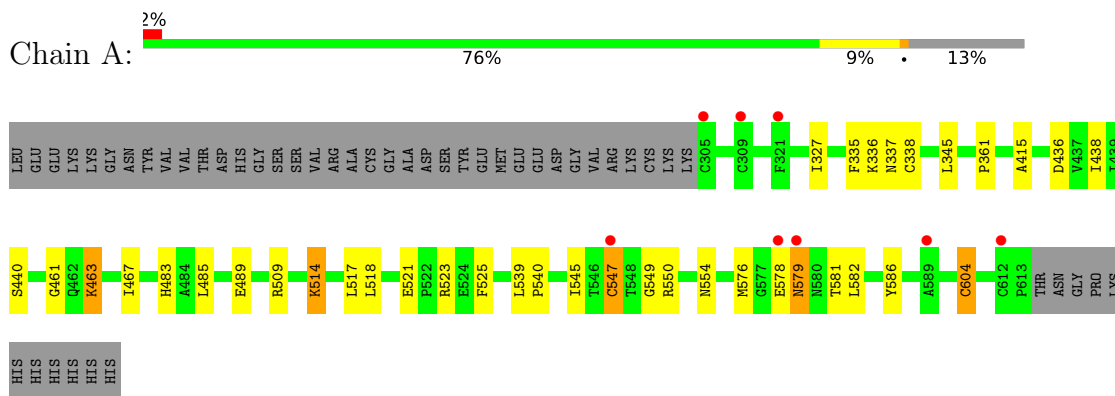
- Molecule 5 is water.

Mol	Chain	Residues	Atoms		ZeroOcc	AltConf
5	A	57	Total	O	0	0
			57	57		
5	B	60	Total	O	0	0
			60	60		

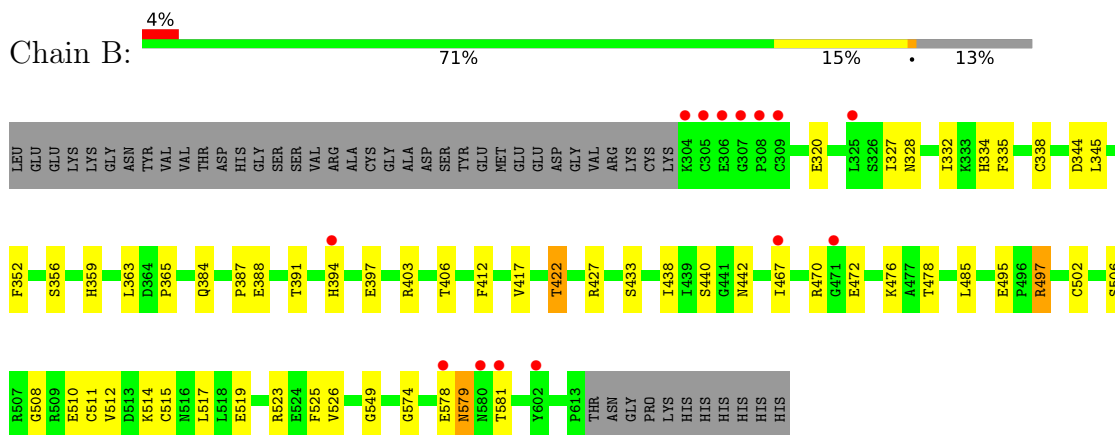
3 Residue-property plots [i](#)

These plots are drawn for all protein, RNA, DNA and oligosaccharide chains in the entry. The first graphic for a chain summarises the proportions of the various outlier classes displayed in the second graphic. The second graphic shows the sequence view annotated by issues in geometry and electron density. Residues are color-coded according to the number of geometric quality criteria for which they contain at least one outlier: green = 0, yellow = 1, orange = 2 and red = 3 or more. A red dot above a residue indicates a poor fit to the electron density ($RSRZ > 2$). Stretches of 2 or more consecutive residues without any outlier are shown as a green connector. Residues present in the sample, but not in the model, are shown in grey.

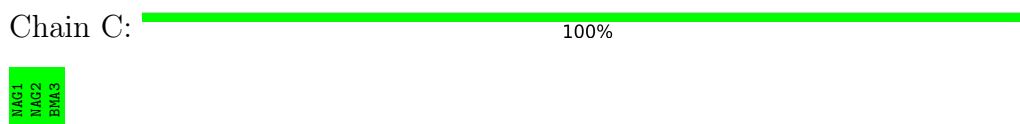
- Molecule 1: Epidermal growth factor receptor



- Molecule 1: Epidermal growth factor receptor



- Molecule 2: beta-D-mannopyranose-(1-4)-2-acetamido-2-deoxy-beta-D-glucopyranose-(1-4)-2-acetamido-2-deoxy-beta-D-glucopyranose




- Molecule 3: 2-acetamido-2-deoxy-beta-D-glucopyranose-(1-4)-2-acetamido-2-deoxy-beta-D-glucopyranose

Chain D:  50% 50%

MAG1
MAG2

- Molecule 3: 2-acetamido-2-deoxy-beta-D-glucopyranose-(1-4)-2-acetamido-2-deoxy-beta-D-glucopyranose

Chain E:  100%

MAG1
MAG2

4 Data and refinement statistics

Property	Value	Source
Space group	P 1 21 1	Depositor
Cell constants a, b, c, α , β , γ	48.82Å 88.29Å 99.75Å 90.00° 95.25° 90.00°	Depositor
Resolution (Å)	45.33 – 2.39 48.61 – 2.39	Depositor EDS
% Data completeness (in resolution range)	99.1 (45.33-2.39) 99.2 (48.61-2.39)	Depositor EDS
R_{merge}	0.07	Depositor
R_{sym}	(Not available)	Depositor
$\langle I/\sigma(I) \rangle$ ¹	2.10 (at 2.39Å)	Xtrriage
Refinement program	PHENIX (1.20.1_4487: ???)	Depositor
R, R_{free}	0.215 , 0.244 0.219 , 0.244	Depositor DCC
R_{free} test set	1600 reflections (4.81%)	wwPDB-VP
Wilson B-factor (Å ²)	47.4	Xtrriage
Anisotropy	0.534	Xtrriage
Bulk solvent k_{sol} (e/Å ³), B_{sol} (Å ²)	0.33 , 41.0	EDS
L-test for twinning ²	$\langle L \rangle = 0.50$, $\langle L^2 \rangle = 0.33$	Xtrriage
Estimated twinning fraction	No twinning to report.	Xtrriage
F_o, F_c correlation	0.94	EDS
Total number of atoms	4871	wwPDB-VP
Average B, all atoms (Å ²)	57.0	wwPDB-VP

Xtrriage's analysis on translational NCS is as follows: *The largest off-origin peak in the Patterson function is 4.93% of the height of the origin peak. No significant pseudotranslation is detected.*

¹Intensities estimated from amplitudes.

²Theoretical values of $\langle |L| \rangle$, $\langle L^2 \rangle$ for acentric reflections are 0.5, 0.333 respectively for untwinned datasets, and 0.375, 0.2 for perfectly twinned datasets.

5 Model quality [i](#)

5.1 Standard geometry [i](#)

Bond lengths and bond angles in the following residue types are not validated in this section: NAG, BMA

The Z score for a bond length (or angle) is the number of standard deviations the observed value is removed from the expected value. A bond length (or angle) with $|Z| > 5$ is considered an outlier worth inspection. RMSZ is the root-mean-square of all Z scores of the bond lengths (or angles).

Mol	Chain	Bond lengths		Bond angles	
		RMSZ	# $ Z > 5$	RMSZ	# $ Z > 5$
1	A	0.41	1/2355 (0.0%)	0.61	1/3199 (0.0%)
1	B	0.33	0/2348	0.58	0/3195
All	All	0.37	1/4703 (0.0%)	0.59	1/6394 (0.0%)

All (1) bond length outliers are listed below:

Mol	Chain	Res	Type	Atoms	Z	Observed(Å)	Ideal(Å)
1	A	547	CYS	CB-SG	-6.59	1.71	1.82

All (1) bond angle outliers are listed below:

Mol	Chain	Res	Type	Atoms	Z	Observed(°)	Ideal(°)
1	A	604	CYS	CA-CB-SG	-9.10	97.63	114.00

There are no chirality outliers.

There are no planarity outliers.

5.2 Too-close contacts [i](#)

In the following table, the Non-H and H(model) columns list the number of non-hydrogen atoms and hydrogen atoms in the chain respectively. The H(added) column lists the number of hydrogen atoms added and optimized by MolProbity. The Clashes column lists the number of clashes within the asymmetric unit, whereas Symm-Clashes lists symmetry-related clashes.

Mol	Chain	Non-H	H(model)	H(added)	Clashes	Symm-Clashes
1	A	2305	0	2189	32	0
1	B	2298	0	2146	52	0
2	C	39	0	34	0	0
3	D	28	0	25	0	0

Continued on next page...

Continued from previous page...

Mol	Chain	Non-H	H(model)	H(added)	Clashes	Symm-Clashes
3	E	28	0	25	1	0
4	A	28	0	26	0	0
4	B	28	0	26	0	0
5	A	57	0	0	0	0
5	B	60	0	0	5	0
All	All	4871	0	4471	81	0

The all-atom clashscore is defined as the number of clashes found per 1000 atoms (including hydrogen atoms). The all-atom clashscore for this structure is 9.

All (81) close contacts within the same asymmetric unit are listed below, sorted by their clash magnitude.

Atom-1	Atom-2	Interatomic distance (Å)	Clash overlap (Å)
1:B:497:ARG:HH11	1:B:497:ARG:HB2	1.02	1.15
1:B:497:ARG:HB2	1:B:497:ARG:NH1	1.67	1.08
1:A:578:GLU:O	1:A:579:ASN:CG	2.15	0.84
1:B:327:ILE:HD11	1:B:345:LEU:HD22	1.60	0.83
1:A:509:ARG:O	1:A:509:ARG:NE	2.16	0.77
1:B:523:ARG:HD2	5:B:804:HOH:O	1.87	0.73
1:A:545:ILE:HD12	1:A:547:CYS:O	1.89	0.72
1:A:336:LYS:HG3	1:A:337:ASN:OD1	1.89	0.72
1:B:412:PHE:CE2	1:B:438:ILE:HB	2.25	0.71
1:B:497:ARG:NH2	1:B:510:GLU:HB2	2.06	0.69
1:B:352:PHE:CZ	1:B:387:PRO:HD3	2.27	0.69
1:A:489:GLU:HA	1:A:489:GLU:OE1	1.92	0.69
1:B:510:GLU:HG2	1:B:512:VAL:HG13	1.73	0.69
1:A:514:LYS:HD2	1:A:514:LYS:O	1.95	0.66
1:A:576:MET:SD	1:B:359:HIS:HB3	2.36	0.66
1:A:539:LEU:HD12	1:A:540:PRO:HD2	1.79	0.65
1:B:327:ILE:HG23	1:B:332:ILE:HD13	1.81	0.62
1:A:436:ASP:OD2	1:A:463:LYS:HE3	1.99	0.62
1:B:515:CYS:HB2	1:B:517:LEU:HD13	1.80	0.61
1:B:427:ARG:HD3	1:B:497:ARG:HG2	1.83	0.60
1:B:476:LYS:H	1:B:476:LYS:HD2	1.68	0.59
1:B:412:PHE:HE2	1:B:438:ILE:HB	1.66	0.58
1:B:510:GLU:HG2	1:B:512:VAL:CG1	2.34	0.58
1:A:440:SER:HA	1:A:467:ILE:O	2.03	0.58
1:B:514:LYS:NZ	1:B:519:GLU:OE2	2.28	0.57
1:B:495:GLU:HA	1:B:495:GLU:OE1	2.04	0.57
1:A:576:MET:CE	1:A:582:LEU:HD23	2.35	0.57
1:A:327:ILE:HD11	1:A:345:LEU:HD22	1.87	0.56

Continued on next page...

Continued from previous page...

Atom-1	Atom-2	Interatomic distance (Å)	Clash overlap (Å)
1:A:461:GLY:O	1:A:463:LYS:HE2	2.04	0.56
1:B:365:PRO:HB3	1:B:387:PRO:HG3	1.88	0.55
1:B:352:PHE:CE1	1:B:363:LEU:HD23	2.42	0.54
1:B:391:THR:HB	1:B:422:THR:OG1	2.08	0.53
1:B:327:ILE:CG2	1:B:332:ILE:HD13	2.39	0.52
1:B:579:ASN:CB	1:B:581:THR:HG22	2.39	0.52
1:B:476:LYS:H	1:B:476:LYS:CD	2.22	0.52
1:B:502:CYS:HB3	5:B:806:HOH:O	2.11	0.52
1:B:328:ASN:HB2	5:B:809:HOH:O	2.10	0.51
1:B:476:LYS:HD2	1:B:476:LYS:N	2.26	0.50
1:B:427:ARG:CD	1:B:497:ARG:HG2	2.41	0.50
1:B:440:SER:HA	1:B:467:ILE:O	2.13	0.49
1:B:335:PHE:HA	1:B:338:CYS:SG	2.53	0.48
1:B:344:ASP:OD1	1:B:406:THR:OG1	2.30	0.48
1:A:335:PHE:HA	1:A:338:CYS:SG	2.54	0.48
1:B:472:GLU:O	1:B:476:LYS:HD3	2.14	0.48
1:B:508:GLY:O	5:B:801:HOH:O	2.20	0.48
1:A:576:MET:HE3	1:A:576:MET:HA	1.96	0.48
1:B:502:CYS:SG	1:B:506:SER:HB3	2.53	0.48
1:A:581:THR:HA	1:B:356:SER:HB2	1.95	0.47
1:A:586:TYR:HB3	1:A:604:CYS:SG	2.55	0.47
1:A:604:CYS:SG	1:A:604:CYS:O	2.69	0.47
1:A:436:ASP:CG	1:A:463:LYS:HE3	2.35	0.47
1:B:515:CYS:HB2	1:B:517:LEU:CD1	2.45	0.47
1:A:415:ALA:HA	1:A:438:ILE:HG23	1.97	0.47
1:B:485:LEU:HD13	1:B:511:CYS:O	2.15	0.47
1:A:578:GLU:O	1:A:579:ASN:CB	2.63	0.46
1:B:320:GLU:OE2	1:B:334:HIS:HB3	2.14	0.46
1:B:578:GLU:O	1:B:579:ASN:CB	2.64	0.46
1:A:361:PRO:HB3	1:B:574:GLY:O	2.15	0.46
1:B:427:ARG:HD3	1:B:497:ARG:O	2.16	0.45
1:A:514:LYS:HD2	1:A:514:LYS:C	2.37	0.45
1:A:576:MET:HE3	1:A:582:LEU:HD23	1.99	0.45
1:A:525:PHE:CZ	1:A:549:GLY:HA2	2.52	0.45
1:B:384:GLN:HG2	1:B:417:VAL:CG2	2.48	0.44
1:A:521:GLU:OE1	1:A:523:ARG:NH1	2.51	0.43
1:A:578:GLU:O	1:A:579:ASN:OD1	2.37	0.43
1:B:365:PRO:HB3	1:B:387:PRO:CG	2.46	0.43
1:B:510:GLU:HG3	1:B:511:CYS:N	2.32	0.43
1:B:525:PHE:CZ	1:B:549:GLY:HA2	2.53	0.43
1:B:442:ASN:C	5:B:807:HOH:O	2.57	0.43

Continued on next page...

Continued from previous page...

Atom-1	Atom-2	Interatomic distance (Å)	Clash overlap (Å)
1:A:483:HIS:CE1	1:A:485:LEU:HD12	2.53	0.43
1:A:517:LEU:C	1:A:518:LEU:HD23	2.39	0.43
1:B:403:ARG:O	1:B:433:SER:HB2	2.19	0.42
1:B:394:HIS:CE1	1:B:427:ARG:HH21	2.37	0.42
1:B:470:ARG:NH2	1:B:478:THR:HG21	2.34	0.42
1:B:497:ARG:HB2	1:B:497:ARG:CZ	2.40	0.41
1:B:515:CYS:SG	1:B:526:VAL:HG22	2.60	0.41
1:A:550:ARG:O	1:A:554:ASN:ND2	2.49	0.41
1:B:388:GLU:HB3	3:E:1:NAG:C7	2.51	0.41
1:A:509:ARG:O	1:A:509:ARG:CG	2.70	0.40
1:B:397:GLU:OE1	1:B:427:ARG:NH2	2.50	0.40
1:A:576:MET:CE	1:A:581:THR:O	2.70	0.40

There are no symmetry-related clashes.

5.3 Torsion angles [i](#)

5.3.1 Protein backbone [i](#)

In the following table, the Percentiles column shows the percent Ramachandran outliers of the chain as a percentile score with respect to all X-ray entries followed by that with respect to entries of similar resolution.

The Analysed column shows the number of residues for which the backbone conformation was analysed, and the total number of residues.

Mol	Chain	Analysed	Favoured	Allowed	Outliers	Percentiles	
1	A	307/357 (86%)	295 (96%)	11 (4%)	1 (0%)	41	55
1	B	308/357 (86%)	294 (96%)	13 (4%)	1 (0%)	41	55
All	All	615/714 (86%)	589 (96%)	24 (4%)	2 (0%)	41	55

All (2) Ramachandran outliers are listed below:

Mol	Chain	Res	Type
1	A	579	ASN
1	B	579	ASN

5.3.2 Protein sidechains [i](#)

In the following table, the Percentiles column shows the percent sidechain outliers of the chain as a percentile score with respect to all X-ray entries followed by that with respect to entries of similar resolution.

The Analysed column shows the number of residues for which the sidechain conformation was analysed, and the total number of residues.

Mol	Chain	Analysed	Rotameric	Outliers	Percentiles	
1	A	254/307 (83%)	252 (99%)	2 (1%)	81	91
1	B	251/307 (82%)	249 (99%)	2 (1%)	81	91
All	All	505/614 (82%)	501 (99%)	4 (1%)	81	91

All (4) residues with a non-rotameric sidechain are listed below:

Mol	Chain	Res	Type
1	A	463	LYS
1	A	514	LYS
1	B	422	THR
1	B	497	ARG

Sometimes sidechains can be flipped to improve hydrogen bonding and reduce clashes. All (4) such sidechains are listed below:

Mol	Chain	Res	Type
1	A	346	HIS
1	B	408	GLN
1	B	411	GLN
1	B	480	GLN

5.3.3 RNA [i](#)

There are no RNA molecules in this entry.

5.4 Non-standard residues in protein, DNA, RNA chains [i](#)

There are no non-standard protein/DNA/RNA residues in this entry.

5.5 Carbohydrates [i](#)

7 monosaccharides are modelled in this entry.

In the following table, the Counts columns list the number of bonds (or angles) for which Mogul statistics could be retrieved, the number of bonds (or angles) that are observed in the model and the number of bonds (or angles) that are defined in the Chemical Component Dictionary. The Link column lists molecule types, if any, to which the group is linked. The Z score for a bond length (or angle) is the number of standard deviations the observed value is removed from the expected value. A bond length (or angle) with $|Z| > 2$ is considered an outlier worth inspection. RMSZ is the root-mean-square of all Z scores of the bond lengths (or angles).

Mol	Type	Chain	Res	Link	Bond lengths			Bond angles		
					Counts	RMSZ	# Z > 2	Counts	RMSZ	# Z > 2
2	NAG	C	1	2,1	14,14,15	0.46	0	17,19,21	0.48	0
2	NAG	C	2	2	14,14,15	0.48	0	17,19,21	0.79	0
2	BMA	C	3	2	11,11,12	0.87	0	15,15,17	0.91	0
3	NAG	D	1	3,1	14,14,15	0.31	0	17,19,21	0.42	0
3	NAG	D	2	3	14,14,15	0.28	0	17,19,21	0.73	1 (5%)
3	NAG	E	1	3,1	14,14,15	0.32	0	17,19,21	0.47	0
3	NAG	E	2	3	14,14,15	0.32	0	17,19,21	0.68	1 (5%)

In the following table, the Chirals column lists the number of chiral outliers, the number of chiral centers analysed, the number of these observed in the model and the number defined in the Chemical Component Dictionary. Similar counts are reported in the Torsion and Rings columns. '-' means no outliers of that kind were identified.

Mol	Type	Chain	Res	Link	Chirals	Torsions	Rings
2	NAG	C	1	2,1	-	2/6/23/26	0/1/1/1
2	NAG	C	2	2	-	1/6/23/26	0/1/1/1
2	BMA	C	3	2	-	0/2/19/22	0/1/1/1
3	NAG	D	1	3,1	-	0/6/23/26	0/1/1/1
3	NAG	D	2	3	-	1/6/23/26	0/1/1/1
3	NAG	E	1	3,1	-	0/6/23/26	0/1/1/1
3	NAG	E	2	3	-	4/6/23/26	0/1/1/1

There are no bond length outliers.

All (2) bond angle outliers are listed below:

Mol	Chain	Res	Type	Atoms	Z	Observed(°)	Ideal(°)
3	D	2	NAG	C1-O5-C5	2.30	115.31	112.19
3	E	2	NAG	C1-O5-C5	2.10	115.03	112.19

There are no chirality outliers.

All (8) torsion outliers are listed below:

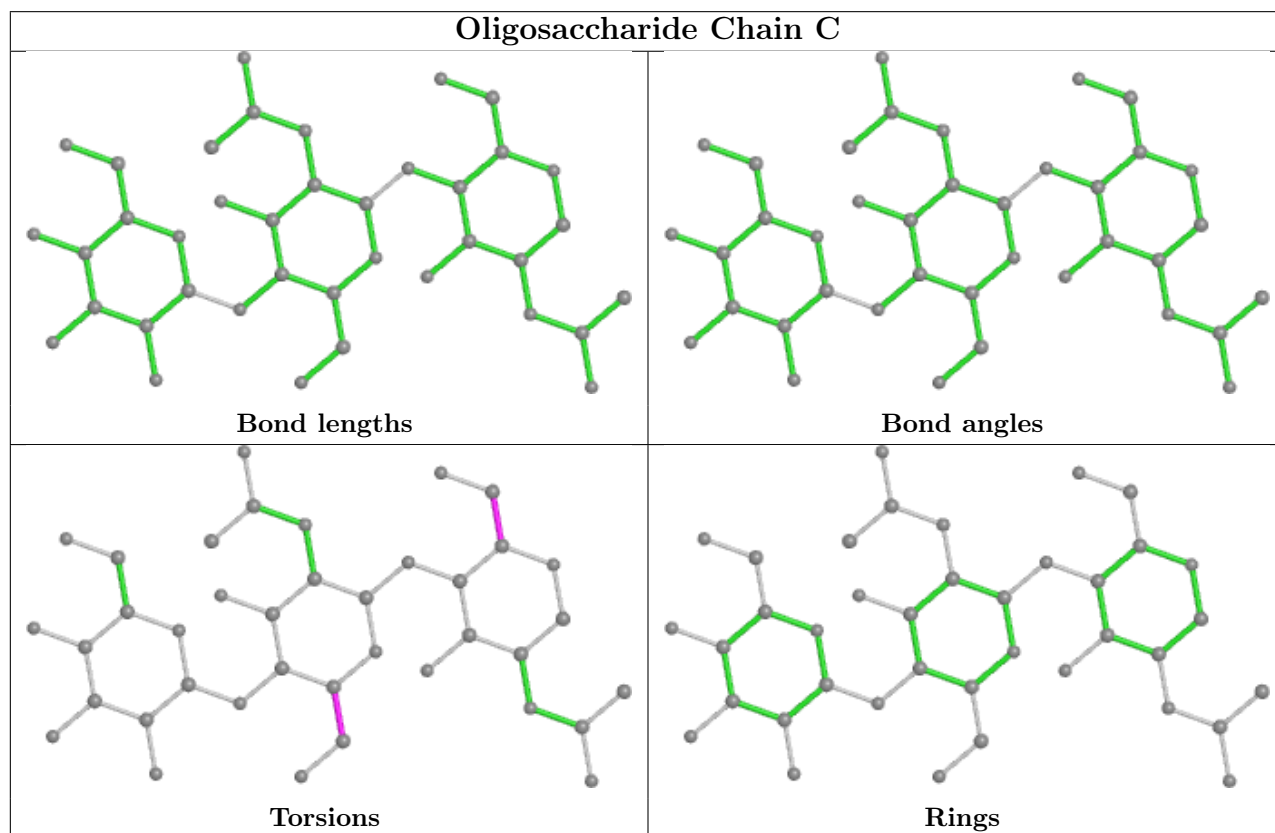
Mol	Chain	Res	Type	Atoms
3	E	2	NAG	C8-C7-N2-C2
3	E	2	NAG	O7-C7-N2-C2
3	E	2	NAG	O5-C5-C6-O6
2	C	1	NAG	C4-C5-C6-O6
3	D	2	NAG	O5-C5-C6-O6
2	C	1	NAG	O5-C5-C6-O6
2	C	2	NAG	O5-C5-C6-O6
3	E	2	NAG	C4-C5-C6-O6

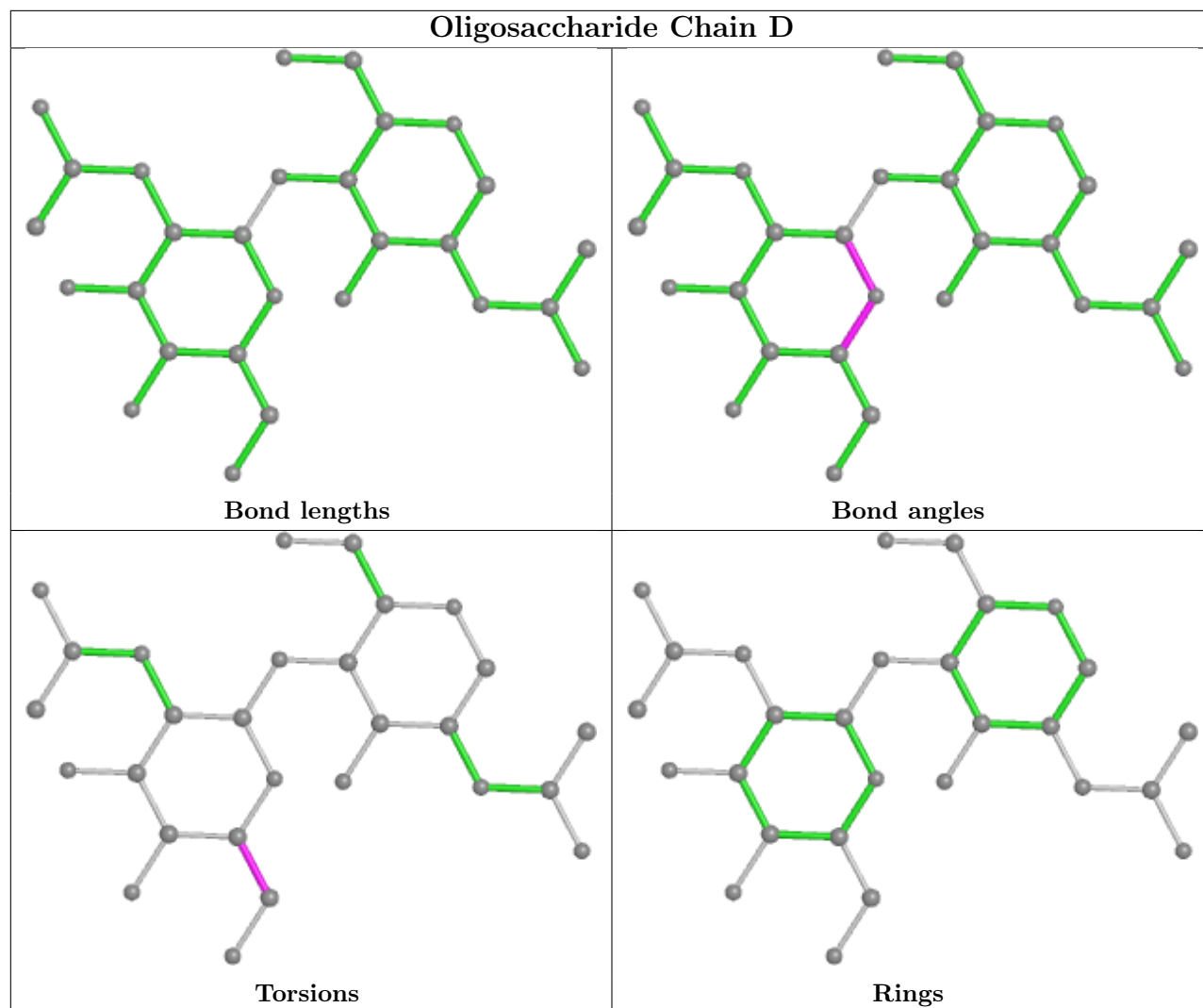
There are no ring outliers.

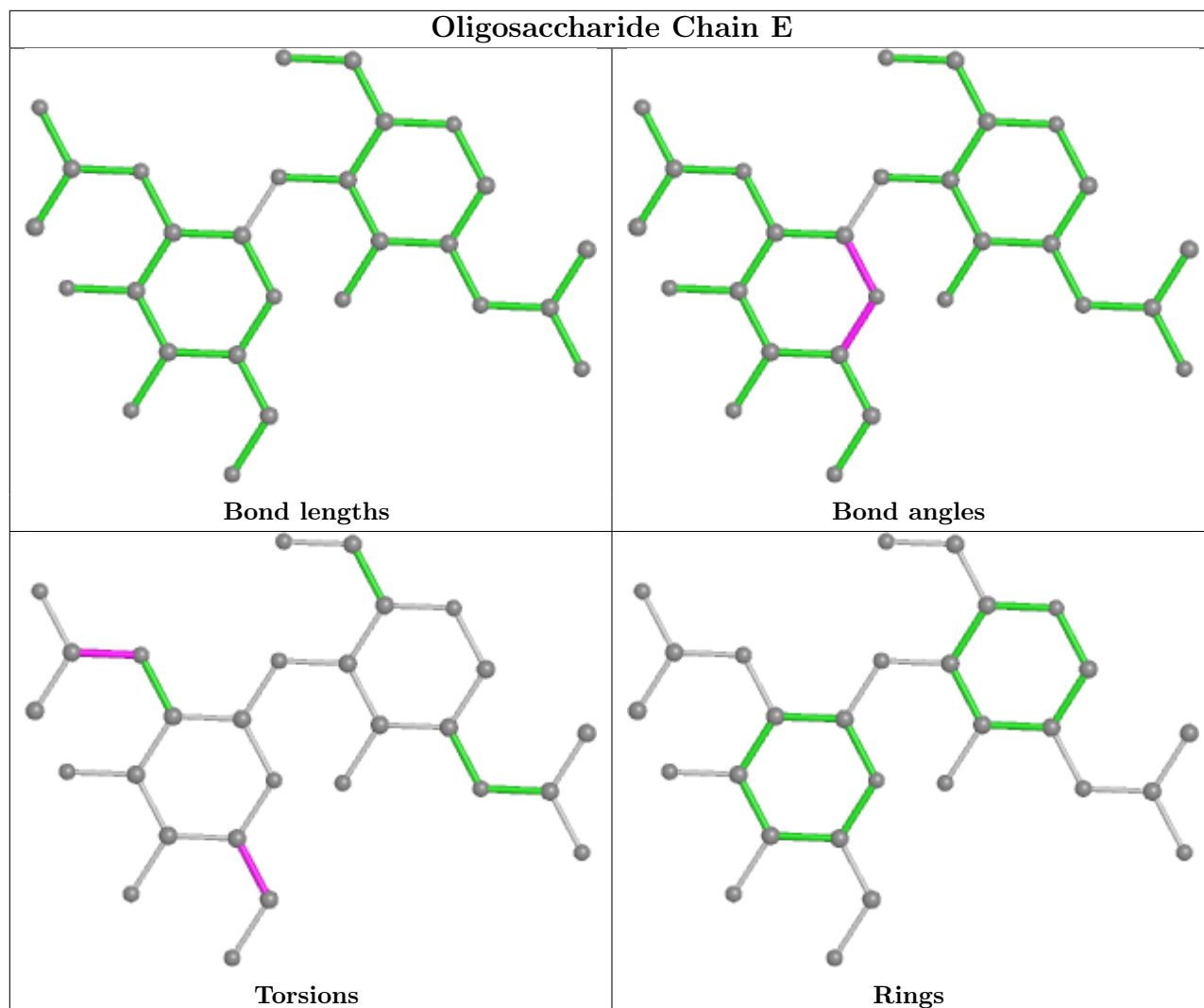
1 monomer is involved in 1 short contact:

Mol	Chain	Res	Type	Clashes	Symm-Clashes
3	E	1	NAG	1	0

The following is a two-dimensional graphical depiction of Mogul quality analysis of bond lengths, bond angles, torsion angles, and ring geometry for oligosaccharide.







5.6 Ligand geometry [i](#)

4 ligands are modelled in this entry.

In the following table, the Counts columns list the number of bonds (or angles) for which Mogul statistics could be retrieved, the number of bonds (or angles) that are observed in the model and the number of bonds (or angles) that are defined in the Chemical Component Dictionary. The Link column lists molecule types, if any, to which the group is linked. The Z score for a bond length (or angle) is the number of standard deviations the observed value is removed from the expected value. A bond length (or angle) with $|Z| > 2$ is considered an outlier worth inspection. RMSZ is the root-mean-square of all Z scores of the bond lengths (or angles).

Mol	Type	Chain	Res	Link	Bond lengths			Bond angles		
					Counts	RMSZ	$\# Z > 2$	Counts	RMSZ	$\# Z > 2$
4	NAG	A	702	1	14,14,15	0.22	0	17,19,21	0.51	0
4	NAG	A	701	1	14,14,15	0.24	0	17,19,21	0.45	0
4	NAG	B	702	1	14,14,15	0.30	0	17,19,21	0.82	1 (5%)
4	NAG	B	701	1	14,14,15	0.33	0	17,19,21	0.49	0

In the following table, the Chirals column lists the number of chiral outliers, the number of chiral centers analysed, the number of these observed in the model and the number defined in the Chemical Component Dictionary. Similar counts are reported in the Torsion and Rings columns. '-' means no outliers of that kind were identified.

Mol	Type	Chain	Res	Link	Chirals	Torsions	Rings
4	NAG	A	702	1	-	0/6/23/26	0/1/1/1
4	NAG	A	701	1	-	1/6/23/26	0/1/1/1
4	NAG	B	702	1	-	2/6/23/26	0/1/1/1
4	NAG	B	701	1	-	0/6/23/26	0/1/1/1

There are no bond length outliers.

All (1) bond angle outliers are listed below:

Mol	Chain	Res	Type	Atoms	Z	Observed(°)	Ideal(°)
4	B	702	NAG	C1-O5-C5	2.82	116.02	112.19

There are no chirality outliers.

All (3) torsion outliers are listed below:

Mol	Chain	Res	Type	Atoms
4	B	702	NAG	O5-C5-C6-O6
4	B	702	NAG	C4-C5-C6-O6
4	A	701	NAG	O5-C5-C6-O6

There are no ring outliers.

No monomer is involved in short contacts.

5.7 Other polymers [i](#)

There are no such residues in this entry.

5.8 Polymer linkage issues [i](#)

There are no chain breaks in this entry.

6 Fit of model and data

6.1 Protein, DNA and RNA chains

In the following table, the column labelled ‘#RSRZ > 2’ contains the number (and percentage) of RSRZ outliers, followed by percent RSRZ outliers for the chain as percentile scores relative to all X-ray entries and entries of similar resolution. The OWAB column contains the minimum, median, 95th percentile and maximum values of the occupancy-weighted average B-factor per residue. The column labelled ‘Q < 0.9’ lists the number of (and percentage) of residues with an average occupancy less than 0.9.

Mol	Chain	Analysed	<RSRZ>	#RSRZ>2	OWAB(Å ²)	Q<0.9
1	A	309/357 (86%)	0.48	8 (2%) 56 54	34, 51, 81, 131	0
1	B	310/357 (86%)	0.51	14 (4%) 33 31	37, 58, 82, 110	0
All	All	619/714 (86%)	0.49	22 (3%) 42 42	34, 56, 82, 131	0

All (22) RSRZ outliers are listed below:

Mol	Chain	Res	Type	RSRZ
1	B	307	GLY	7.0
1	B	580	ASN	6.5
1	A	305	CYS	6.1
1	B	306	GLU	4.6
1	B	309	CYS	4.0
1	B	305	CYS	3.6
1	B	578	GLU	3.5
1	A	309	CYS	3.3
1	B	308	PRO	3.0
1	B	467	ILE	3.0
1	B	394	HIS	3.0
1	B	581	THR	2.6
1	B	471	GLY	2.6
1	A	578	GLU	2.5
1	A	579	ASN	2.5
1	A	547	CYS	2.5
1	B	602	TYR	2.4
1	B	304	LYS	2.3
1	A	612	CYS	2.3
1	A	321	PHE	2.1
1	A	589	ALA	2.0
1	B	325	LEU	2.0

6.2 Non-standard residues in protein, DNA, RNA chains [i](#)

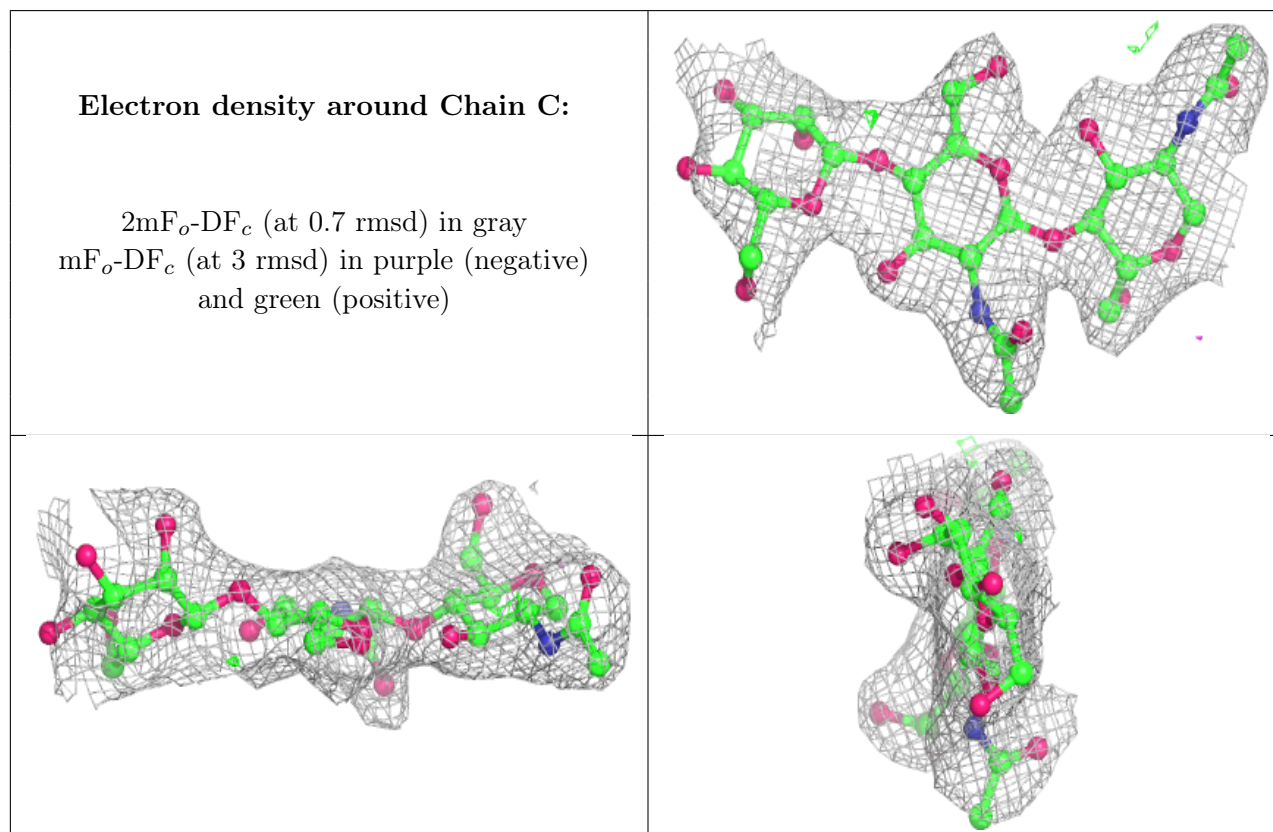
There are no non-standard protein/DNA/RNA residues in this entry.

6.3 Carbohydrates [i](#)

In the following table, the Atoms column lists the number of modelled atoms in the group and the number defined in the chemical component dictionary. The B-factors column lists the minimum, median, 95th percentile and maximum values of B factors of atoms in the group. The column labelled 'Q < 0.9' lists the number of atoms with occupancy less than 0.9.

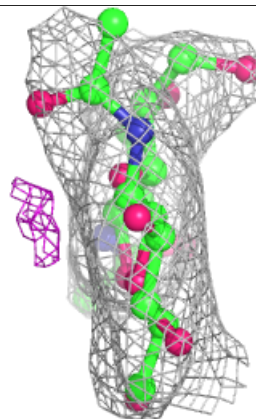
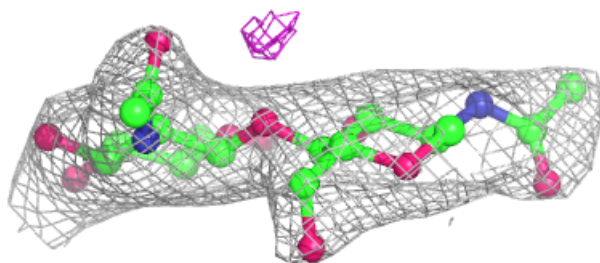
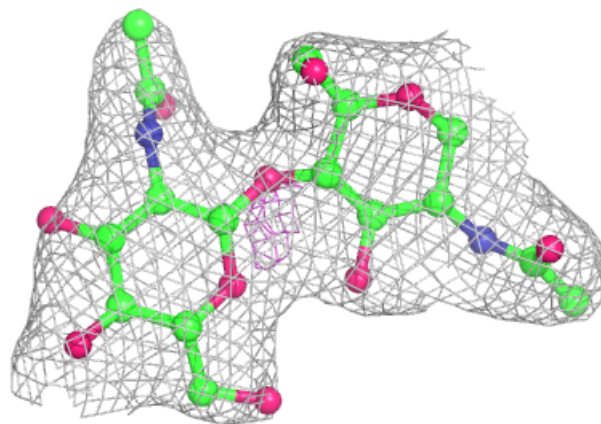
Mol	Type	Chain	Res	Atoms	RSCC	RSR	B-factors(Å ²)	Q<0.9
3	NAG	E	2	14/15	0.74	0.20	100,104,107,107	0
2	BMA	C	3	11/12	0.86	0.18	73,81,86,89	0
3	NAG	E	1	14/15	0.91	0.27	87,93,98,102	0
3	NAG	D	2	14/15	0.91	0.20	66,70,76,76	0
3	NAG	D	1	14/15	0.96	0.17	56,62,67,68	0
2	NAG	C	2	14/15	0.96	0.18	57,61,69,73	0
2	NAG	C	1	14/15	0.97	0.15	43,49,56,56	0

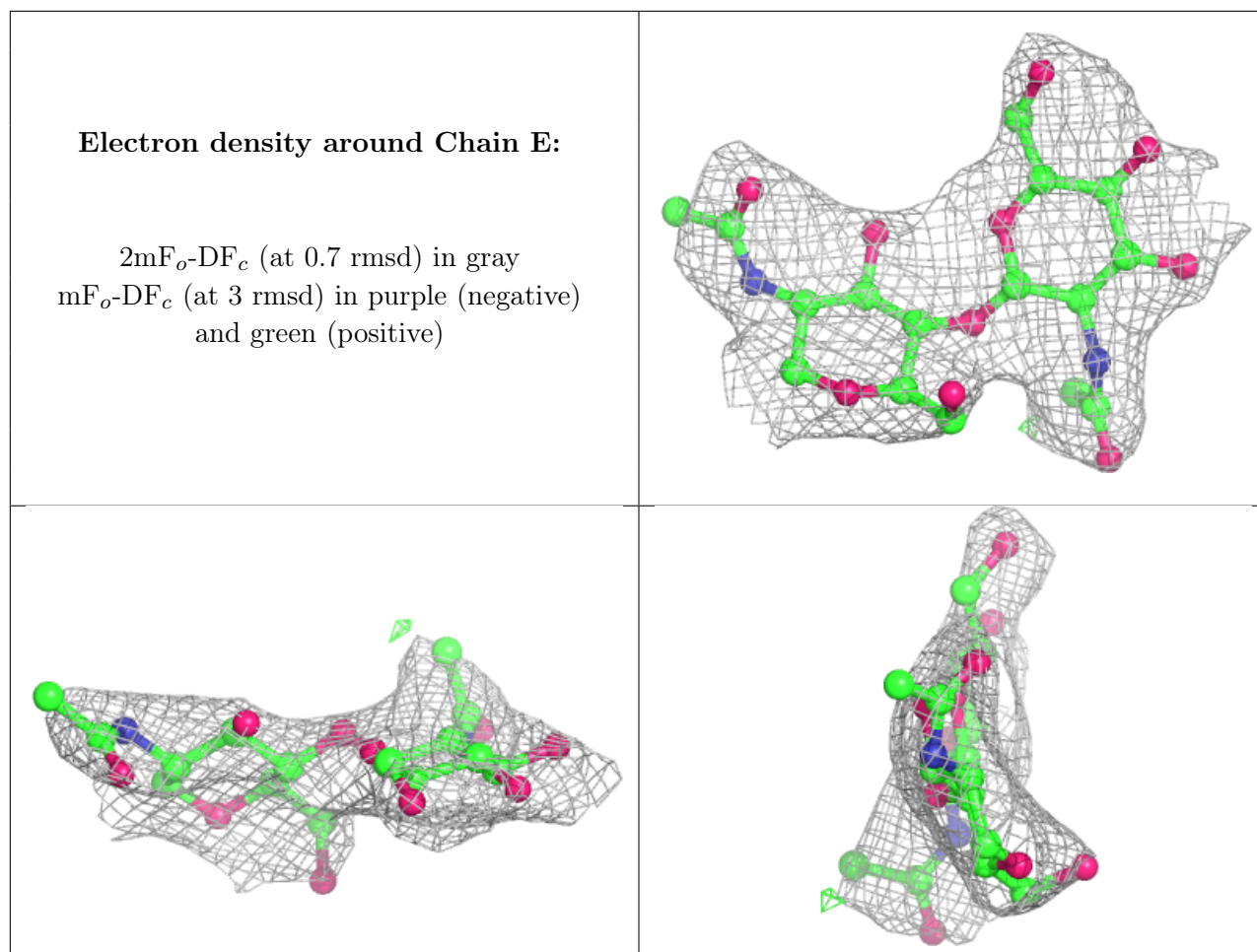
The following is a graphical depiction of the model fit to experimental electron density for oligosaccharide. Each fit is shown from different orientation to approximate a three-dimensional view.



Electron density around Chain D:

$2mF_o-DF_c$ (at 0.7 rmsd) in gray
 mF_o-DF_c (at 3 rmsd) in purple (negative)
and green (positive)





6.4 Ligands [i](#)

In the following table, the Atoms column lists the number of modelled atoms in the group and the number defined in the chemical component dictionary. The B-factors column lists the minimum, median, 95th percentile and maximum values of B factors of atoms in the group. The column labelled 'Q< 0.9' lists the number of atoms with occupancy less than 0.9.

Mol	Type	Chain	Res	Atoms	RSCC	RSR	B-factors(Å ²)	Q<0.9
4	NAG	A	702	14/15	0.64	0.20	61,74,78,79	0
4	NAG	B	701	14/15	0.71	0.18	67,79,84,84	0
4	NAG	B	702	14/15	0.79	0.16	54,61,64,65	0
4	NAG	A	701	14/15	0.82	0.41	113,127,144,145	0

6.5 Other polymers [i](#)

There are no such residues in this entry.