



Full wwPDB X-ray Structure Validation Report ⓘ

May 6, 2024 – 06:10 PM EDT

PDB ID : 8UJG
Title : X-ray crystal structure of *Toxoplasma gondii* GalNAc-T3 in complex with UDP-GalNAc, Mn²⁺, and the mono-glycopeptide Srs13.2
Authors : Kumar, P.; Samara, N.L.
Deposited on : 2023-10-11
Resolution : 2.27 Å (reported)

This is a Full wwPDB X-ray Structure Validation Report for a publicly released PDB entry.

We welcome your comments at validation@mail.wwpdb.org

A user guide is available at

<https://www.wwpdb.org/validation/2017/XrayValidationReportHelp>

with specific help available everywhere you see the ⓘ symbol.

The types of validation reports are described at

<http://www.wwpdb.org/validation/2017/FAQs#types>.

The following versions of software and data (see [references ⓘ](#)) were used in the production of this report:

MolProbity : 4.02b-467
Mogul : 1.8.5 (274361), CSD as541be (2020)
Xtriage (Phenix) : 1.13
EDS : 2.36.2
buster-report : 1.1.7 (2018)
Percentile statistics : 20191225.v01 (using entries in the PDB archive December 25th 2019)
Refmac : 5.8.0158
CCP4 : 7.0.044 (Gargrove)
Ideal geometry (proteins) : Engh & Huber (2001)
Ideal geometry (DNA, RNA) : Parkinson et al. (1996)
Validation Pipeline (wwPDB-VP) : 2.36.2

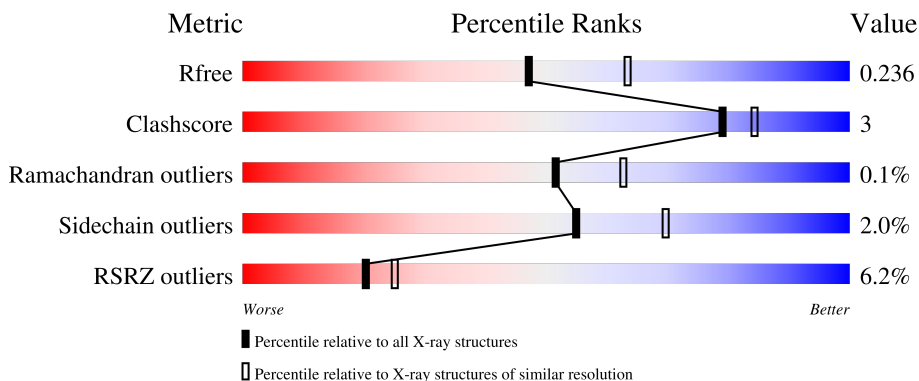
1 Overall quality at a glance

The following experimental techniques were used to determine the structure:

X-RAY DIFFRACTION

The reported resolution of this entry is 2.27 Å.

Percentile scores (ranging between 0-100) for global validation metrics of the entry are shown in the following graphic. The table shows the number of entries on which the scores are based.



Metric	Whole archive (#Entries)	Similar resolution (#Entries, resolution range(Å))
R_{free}	130704	6980 (2.30-2.26)
Clashscore	141614	7711 (2.30-2.26)
Ramachandran outliers	138981	7597 (2.30-2.26)
Sidechain outliers	138945	7598 (2.30-2.26)
RSRZ outliers	127900	6849 (2.30-2.26)

The table below summarises the geometric issues observed across the polymeric chains and their fit to the electron density. The red, orange, yellow and green segments of the lower bar indicate the fraction of residues that contain outliers for ≥ 3 , 2, 1 and 0 types of geometric quality criteria respectively. A grey segment represents the fraction of residues that are not modelled. The numeric value for each fraction is indicated below the corresponding segment, with a dot representing fractions $\leq 5\%$. The upper red bar (where present) indicates the fraction of residues that have poor fit to the electron density. The numeric value is given above the bar.

Mol	Chain	Length	Quality of chain
1	A	563	
1	B	563	
2	D	19	

2 Entry composition

There are 8 unique types of molecules in this entry. The entry contains 17581 atoms, of which 8565 are hydrogens and 0 are deuteriums.

In the tables below, the ZeroOcc column contains the number of atoms modelled with zero occupancy, the AltConf column contains the number of residues with at least one atom in alternate conformation and the Trace column contains the number of residues modelled with at most 2 atoms.

- Molecule 1 is a protein called Glycosyl transferase.

Mol	Chain	Residues	Atoms						ZeroOcc	AltConf	Trace
			Total	C	H	N	O	S			
1	A	530	8552	2757	4223	760	782	30	0	28	0
1	B	530	8474	2729	4184	757	774	30	0	15	0

There are 4 discrepancies between the modelled and reference sequences:

Chain	Residue	Modelled	Actual	Comment	Reference
A	73	GLY	-	expression tag	UNP A0A125YMZ8
A	297	SER	GLY	engineered mutation	UNP A0A125YMZ8
B	73	GLY	-	expression tag	UNP A0A125YMZ8
B	297	SER	GLY	engineered mutation	UNP A0A125YMZ8

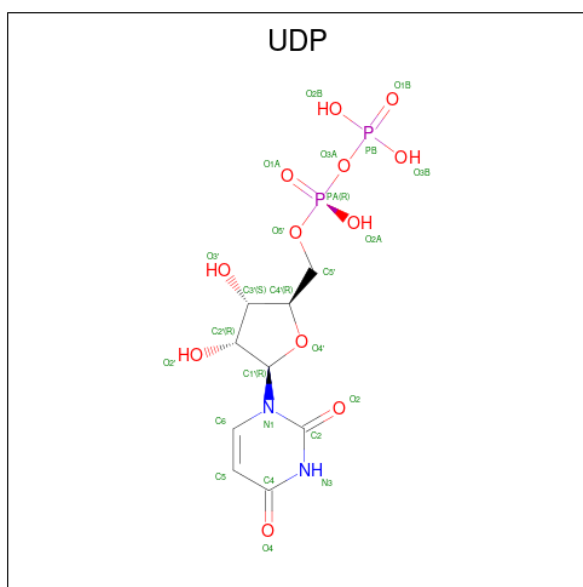
- Molecule 2 is a protein called SAG-related sequence SRS13.

Mol	Chain	Residues	Atoms					ZeroOcc	AltConf	Trace
			Total	C	H	N	O			
2	D	2	28	9	14	2	3	0	0	0

- Molecule 3 is MANGANESE (II) ION (three-letter code: MN) (formula: Mn) (labeled as "Ligand of Interest" by depositor).

Mol	Chain	Residues	Atoms		ZeroOcc	AltConf
3	A	2	Total	Mn	0	0
			2	2		
3	B	2	Total	Mn	0	0
			2	2		

- Molecule 4 is URIDINE-5'-DIPHOSPHATE (three-letter code: UDP) (formula: C₉H₁₄N₂O₁₂P₂) (labeled as "Ligand of Interest" by depositor).



Mol	Chain	Residues	Atoms					ZeroOcc	AltConf	
			Total	C	H	N	O			P
4	A	1	36	9	11	2	12	2	0	0
4	B	1	36	9	11	2	12	2	0	0

- Molecule 5 is GLYCEROL (three-letter code: GOL) (formula: $C_3H_8O_3$).



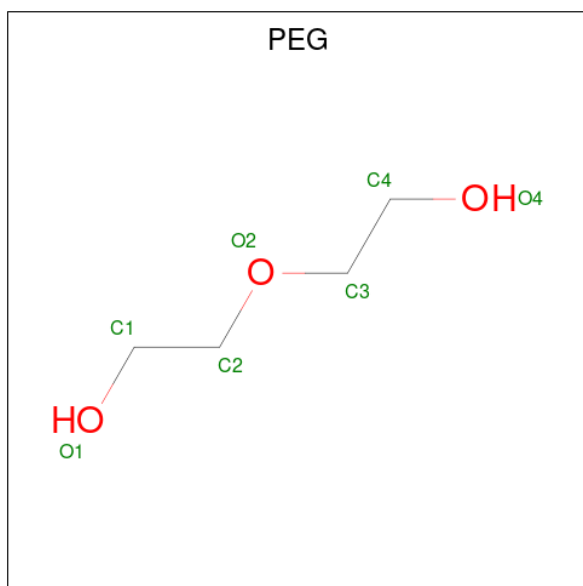
Mol	Chain	Residues	Atoms			ZeroOcc	AltConf	
			Total	C	H			O
5	A	1	14	3	8	3	0	0
5	A	1	13	3	7	3	0	0

Continued on next page...

Continued from previous page...

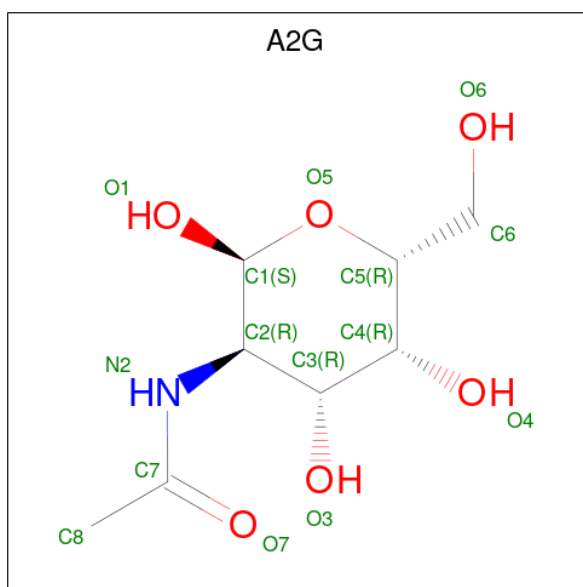
Mol	Chain	Residues	Atoms				ZeroOcc	AltConf
5	A	1	Total	C	H	O	0	0
			14	3	8	3		
5	A	1	Total	C	H	O	0	0
			14	3	8	3		
5	B	1	Total	C	O		0	0
			6	3	3			
5	B	1	Total	C	H	O	0	0
			14	3	8	3		
5	B	1	Total	C	H	O	0	0
			14	3	8	3		
5	B	1	Total	C	H	O	0	0
			14	3	8	3		
5	B	1	Total	C	H	O	0	0
			13	3	7	3		
5	B	1	Total	C	H	O	0	0
			14	3	8	3		

- Molecule 6 is DI(HYDROXYETHYL)ETHER (three-letter code: PEG) (formula: C₄H₁₀O₃).



Mol	Chain	Residues	Atoms				ZeroOcc	AltConf
6	A	1	Total	C	H	O	0	0
			17	4	10	3		
6	B	1	Total	C	H	O	0	0
			17	4	10	3		

- Molecule 7 is 2-acetamido-2-deoxy-alpha-D-galactopyranose (three-letter code: A2G) (formula: C₈H₁₅NO₆) (labeled as "Ligand of Interest" by depositor).



Mol	Chain	Residues	Atoms					ZeroOcc	AltConf
			Total	C	H	N	O		
7	A	1	28	8	14	1	5	0	0

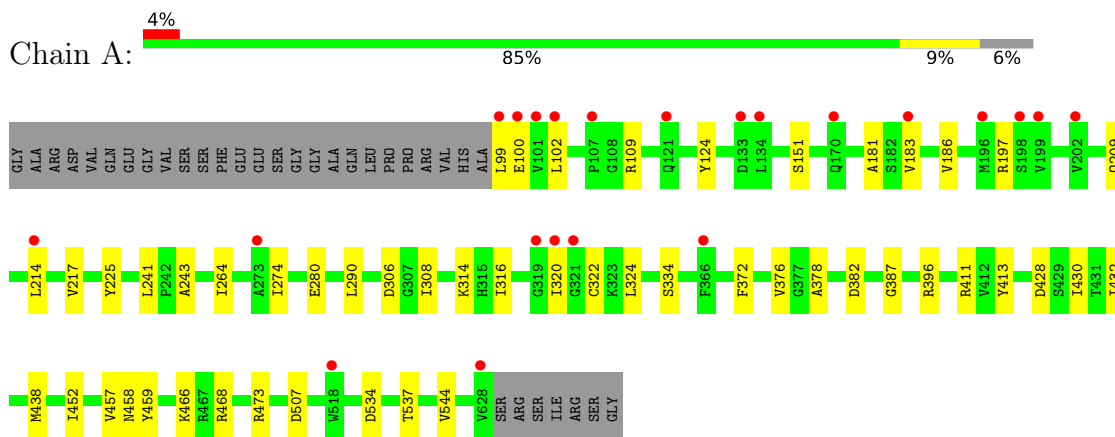
- Molecule 8 is water.

Mol	Chain	Residues	Atoms			ZeroOcc	AltConf
			Total	H	O		
8	A	129	143	14	129	0	0
8	B	112	116	4	112	0	0

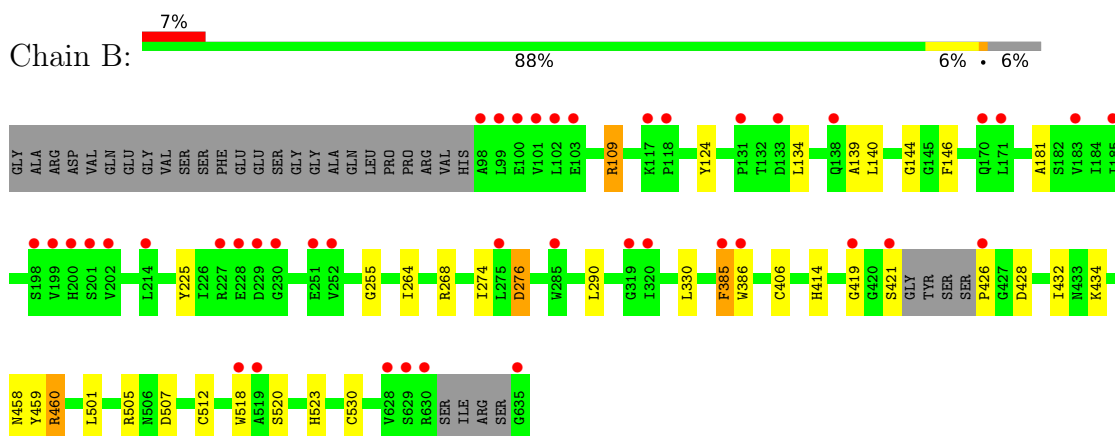
3 Residue-property plots [i](#)

These plots are drawn for all protein, RNA, DNA and oligosaccharide chains in the entry. The first graphic for a chain summarises the proportions of the various outlier classes displayed in the second graphic. The second graphic shows the sequence view annotated by issues in geometry and electron density. Residues are color-coded according to the number of geometric quality criteria for which they contain at least one outlier: green = 0, yellow = 1, orange = 2 and red = 3 or more. A red dot above a residue indicates a poor fit to the electron density ($RSRZ > 2$). Stretches of 2 or more consecutive residues without any outlier are shown as a green connector. Residues present in the sample, but not in the model, are shown in grey.

- Molecule 1: Glycosyl transferase



- Molecule 1: Glycosyl transferase



- Molecule 2: SAG-related sequence SRS13



4 Data and refinement statistics

Property	Value	Source
Space group	P 21 21 21	Depositor
Cell constants a, b, c, α , β , γ	66.61Å 122.62Å 165.66Å 90.00° 90.00° 90.00°	Depositor
Resolution (Å)	29.66 – 2.27 29.66 – 2.27	Depositor EDS
% Data completeness (in resolution range)	98.2 (29.66-2.27) 98.3 (29.66-2.27)	Depositor EDS
R_{merge}	0.20	Depositor
R_{sym}	(Not available)	Depositor
$\langle I/\sigma(I) \rangle$ ¹	1.22 (at 2.26Å)	Xtrriage
Refinement program	PHENIX 1.20.1_4487	Depositor
R, R_{free}	0.192 , 0.237 0.192 , 0.236	Depositor DCC
R_{free} test set	3125 reflections (5.03%)	wwPDB-VP
Wilson B-factor (Å ²)	38.6	Xtrriage
Anisotropy	0.315	Xtrriage
Bulk solvent k_{sol} (e/Å ³), B_{sol} (Å ²)	0.39 , 39.1	EDS
L-test for twinning ²	$\langle L \rangle = 0.48$, $\langle L^2 \rangle = 0.31$	Xtrriage
Estimated twinning fraction	No twinning to report.	Xtrriage
F_o, F_c correlation	0.95	EDS
Total number of atoms	17581	wwPDB-VP
Average B, all atoms (Å ²)	53.0	wwPDB-VP

Xtrriage's analysis on translational NCS is as follows: *The analyses of the Patterson function reveals a significant off-origin peak that is 52.03 % of the origin peak, indicating pseudo-translational symmetry. The chance of finding a peak of this or larger height randomly in a structure without pseudo-translational symmetry is equal to 5.1586e-05. The detected translational NCS is most likely also responsible for the elevated intensity ratio.*

¹Intensities estimated from amplitudes.

²Theoretical values of $\langle |L| \rangle$, $\langle L^2 \rangle$ for acentric reflections are 0.5, 0.333 respectively for untwinned datasets, and 0.375, 0.2 for perfectly twinned datasets.

5 Model quality [i](#)

5.1 Standard geometry [i](#)

Bond lengths and bond angles in the following residue types are not validated in this section: A2G, UDP, MN, GOL, PEG

The Z score for a bond length (or angle) is the number of standard deviations the observed value is removed from the expected value. A bond length (or angle) with $|Z| > 5$ is considered an outlier worth inspection. RMSZ is the root-mean-square of all Z scores of the bond lengths (or angles).

Mol	Chain	Bond lengths		Bond angles	
		RMSZ	# Z >5	RMSZ	# Z >5
1	A	0.25	0/4565	0.52	0/6189
1	B	0.26	0/4458	0.53	0/6042
2	D	0.29	0/13	0.57	0/17
All	All	0.25	0/9036	0.53	0/12248

Chiral center outliers are detected by calculating the chiral volume of a chiral center and verifying if the center is modelled as a planar moiety or with the opposite hand. A planarity outlier is detected by checking planarity of atoms in a peptide group, atoms in a mainchain group or atoms of a sidechain that are expected to be planar.

Mol	Chain	#Chirality outliers	#Planarity outliers
1	B	0	1

There are no bond length outliers.

There are no bond angle outliers.

There are no chirality outliers.

All (1) planarity outliers are listed below:

Mol	Chain	Res	Type	Group
1	B	109	ARG	Sidechain

5.2 Too-close contacts [i](#)

In the following table, the Non-H and H(model) columns list the number of non-hydrogen atoms and hydrogen atoms in the chain respectively. The H(added) column lists the number of hydrogen atoms added and optimized by MolProbity. The Clashes column lists the number of clashes within the asymmetric unit, whereas Symm-Clashes lists symmetry-related clashes.

Mol	Chain	Non-H	H(model)	H(added)	Clashes	Symm-Clashes
1	A	4329	4223	4116	30	0
1	B	4290	4184	4129	20	0
2	D	14	14	15	0	0
3	A	2	0	0	0	0
3	B	2	0	0	0	0
4	A	25	11	11	1	0
4	B	25	11	11	2	0
5	A	24	31	32	0	0
5	B	36	39	48	0	0
6	A	7	10	10	0	0
6	B	7	10	10	0	0
7	A	14	14	12	0	0
8	A	129	14	0	1	0
8	B	112	4	0	1	0
All	All	9016	8565	8394	49	0

The all-atom clashscore is defined as the number of clashes found per 1000 atoms (including hydrogen atoms). The all-atom clashscore for this structure is 3.

All (49) close contacts within the same asymmetric unit are listed below, sorted by their clash magnitude.

Atom-1	Atom-2	Interatomic distance (Å)	Clash overlap (Å)
1:B:181:ALA:HB2	1:B:290:LEU:HD21	1.73	0.69
1:A:100:GLU:HG3	1:A:243:ALA:HB3	1.76	0.68
1:B:505:ARG:NH1	1:B:507:ASP:OD1	2.28	0.67
4:A:703:UDP:O3B	8:A:801:HOH:O	2.13	0.66
1:B:386[B]:TRP:CH2	1:B:426:PRO:HD3	2.33	0.63
1:A:372:PHE:O	1:A:376[B]:VAL:HG23	2.03	0.58
1:A:428:ASP:HB2	1:A:457[B]:VAL:HG11	1.85	0.57
1:B:414:HIS:CE1	8:B:801:HOH:O	2.57	0.57
1:B:264:ILE:HD11	1:B:274:ILE:HD11	1.87	0.57
1:A:376[B]:VAL:HG12	1:A:376[B]:VAL:O	2.06	0.55
1:A:183:VAL:HB	1:A:214[B]:LEU:HD22	1.86	0.55
1:A:372:PHE:CZ	1:A:376[B]:VAL:HG21	2.42	0.55
1:A:306:ASP:OD1	1:A:411:ARG:NH2	2.41	0.53
1:A:181:ALA:HB2	1:A:290:LEU:HD21	1.91	0.52
1:B:255:GLY:HA3	1:B:385:PHE:HA	1.93	0.51
1:A:438[B]:MET:HE1	1:A:452:ILE:HD11	1.94	0.49
1:A:151:SER:OG	1:A:197:ARG:NH2	2.46	0.49
1:A:432:ILE:HG23	1:A:459:TYR:HA	1.95	0.49
1:A:99:LEU:N	1:A:99:LEU:HD23	2.28	0.48
1:B:330:LEU:HD12	1:B:434:LYS:HB3	1.96	0.48

Continued on next page...

Continued from previous page...

Atom-1	Atom-2	Interatomic distance (Å)	Clash overlap (Å)
1:A:457[B]:VAL:HG12	1:A:458[B]:ASN:H	1.78	0.47
1:A:99:LEU:O	1:A:99:LEU:HG	2.15	0.47
1:A:378:ALA:O	1:A:396:ARG:NH2	2.50	0.45
1:A:466:LYS:HD3	1:B:523:HIS:NE2	2.32	0.45
1:A:544[A]:VAL:O	1:A:544[A]:VAL:HG22	2.16	0.45
1:A:387:GLY:HA3	1:A:430:ILE:HD13	1.97	0.45
1:A:473:ARG:HH22	1:B:520:SER:HB2	1.83	0.44
1:A:99:LEU:HD11	1:A:241:LEU:O	2.18	0.44
1:A:466:LYS:O	1:B:518:TRP:HZ3	2.02	0.43
1:A:186:VAL:HG12	1:A:217:VAL:HB	2.00	0.43
1:B:460:ARG:N	1:B:460:ARG:HD3	2.33	0.43
1:A:534:ASP:HA	1:A:537[B]:THR:CG2	2.49	0.42
1:B:458:ASN:O	1:B:460:ARG:NH1	2.53	0.42
1:A:280:GLU:O	1:A:413:TYR:N	2.43	0.42
1:B:276:ASP:OD1	4:B:703:UDP:H3'	2.19	0.42
1:B:512[B]:CYS:HB3	1:B:530:CYS:SG	2.60	0.42
1:A:308:ILE:HG13	1:A:413:TYR:HB3	2.02	0.41
1:A:324:LEU:HD23	1:A:334[B]:SER:HA	2.02	0.41
1:B:134:LEU:HD11	1:B:139:ALA:HB2	2.02	0.41
1:A:324:LEU:HD23	1:A:334[A]:SER:HA	2.02	0.41
1:A:264:ILE:HD11	1:A:274:ILE:HD11	2.03	0.41
1:B:432:ILE:HG23	1:B:459:TYR:HA	2.03	0.40
1:B:501:LEU:C	1:B:501:LEU:HD23	2.42	0.40
1:B:144:GLY:HA2	1:B:421:SER:HB2	2.03	0.40
4:B:703:UDP:H3'	4:B:703:UDP:O1A	2.21	0.40
1:A:314[B]:LYS:NZ	1:A:316:ILE:CD1	2.85	0.40
1:B:140:LEU:HB3	1:B:419:GLY:HA3	2.04	0.40

There are no symmetry-related clashes.

5.3 Torsion angles [i](#)

5.3.1 Protein backbone [i](#)

In the following table, the Percentiles column shows the percent Ramachandran outliers of the chain as a percentile score with respect to all X-ray entries followed by that with respect to entries of similar resolution.

The Analysed column shows the number of residues for which the backbone conformation was analysed, and the total number of residues.

Mol	Chain	Analysed	Favoured	Allowed	Outliers	Percentiles	
1	A	556/563 (99%)	537 (97%)	19 (3%)	0	100	100
1	B	540/563 (96%)	525 (97%)	14 (3%)	1 (0%)	47	57
All	All	1096/1126 (97%)	1062 (97%)	33 (3%)	1 (0%)	51	63

All (1) Ramachandran outliers are listed below:

Mol	Chain	Res	Type
1	B	385	PHE

5.3.2 Protein sidechains [i](#)

In the following table, the Percentiles column shows the percent sidechain outliers of the chain as a percentile score with respect to all X-ray entries followed by that with respect to entries of similar resolution.

The Analysed column shows the number of residues for which the sidechain conformation was analysed, and the total number of residues.

Mol	Chain	Analysed	Rotameric	Outliers	Percentiles	
1	A	476/477 (100%)	466 (98%)	10 (2%)	53	68
1	B	463/477 (97%)	455 (98%)	8 (2%)	60	74
2	D	2/17 (12%)	1 (50%)	1 (50%)	0	0
All	All	941/971 (97%)	922 (98%)	19 (2%)	55	70

All (19) residues with a non-rotameric sidechain are listed below:

Mol	Chain	Res	Type
1	A	102	LEU
1	A	109	ARG
1	A	124	TYR
1	A	209[A]	GLN
1	A	209[B]	GLN
1	A	225	TYR
1	A	320	ILE
1	A	322	CYS
1	A	382	ASP
1	A	507	ASP
1	B	109	ARG
1	B	124	TYR
1	B	146	PHE
1	B	225	TYR

Continued on next page...

Continued from previous page...

Mol	Chain	Res	Type
1	B	276	ASP
1	B	406	CYS
1	B	428	ASP
1	B	460	ARG
2	D	3	VAL

Sometimes sidechains can be flipped to improve hydrogen bonding and reduce clashes. There are no such sidechains identified.

5.3.3 RNA [i](#)

There are no RNA molecules in this entry.

5.4 Non-standard residues in protein, DNA, RNA chains [i](#)

There are no non-standard protein/DNA/RNA residues in this entry.

5.5 Carbohydrates [i](#)

There are no monosaccharides in this entry.

5.6 Ligand geometry [i](#)

Of 19 ligands modelled in this entry, 4 are monoatomic - leaving 15 for Mogul analysis.

In the following table, the Counts columns list the number of bonds (or angles) for which Mogul statistics could be retrieved, the number of bonds (or angles) that are observed in the model and the number of bonds (or angles) that are defined in the Chemical Component Dictionary. The Link column lists molecule types, if any, to which the group is linked. The Z score for a bond length (or angle) is the number of standard deviations the observed value is removed from the expected value. A bond length (or angle) with $|Z| > 2$ is considered an outlier worth inspection. RMSZ is the root-mean-square of all Z scores of the bond lengths (or angles).

Mol	Type	Chain	Res	Link	Bond lengths			Bond angles		
					Counts	RMSZ	$\# Z > 2$	Counts	RMSZ	$\# Z > 2$
6	PEG	A	707	-	6,6,6	0.11	0	5,5,5	0.10	0
4	UDP	B	703	3	24,26,26	0.37	0	37,40,40	0.78	2 (5%)
5	GOL	B	708	-	5,5,5	0.91	0	5,5,5	1.00	0
5	GOL	A	708	-	5,5,5	0.91	0	5,5,5	0.98	0
5	GOL	B	710	-	5,5,5	0.91	0	5,5,5	1.00	0

Mol	Type	Chain	Res	Link	Bond lengths			Bond angles		
					Counts	RMSZ	# Z > 2	Counts	RMSZ	# Z > 2
5	GOL	A	705	-	5,5,5	0.91	0	5,5,5	1.00	0
5	GOL	B	706	-	5,5,5	0.89	0	5,5,5	0.98	0
5	GOL	B	704	-	5,5,5	0.91	0	5,5,5	0.94	0
6	PEG	B	709	-	6,6,6	0.13	0	5,5,5	0.08	0
5	GOL	A	704	-	5,5,5	0.89	0	5,5,5	1.03	0
7	A2G	A	709	-	14,14,15	0.46	0	17,19,21	2.01	2 (11%)
5	GOL	B	707	-	5,5,5	0.90	0	5,5,5	0.98	0
4	UDP	A	703	3	24,26,26	0.37	0	37,40,40	0.77	2 (5%)
5	GOL	B	705	-	5,5,5	0.89	0	5,5,5	1.02	0
5	GOL	A	706	-	5,5,5	0.92	0	5,5,5	0.83	0

In the following table, the Chirals column lists the number of chiral outliers, the number of chiral centers analysed, the number of these observed in the model and the number defined in the Chemical Component Dictionary. Similar counts are reported in the Torsion and Rings columns. '-' means no outliers of that kind were identified.

Mol	Type	Chain	Res	Link	Chirals	Torsions	Rings
6	PEG	A	707	-	-	1/4/4/4	-
4	UDP	B	703	3	-	5/16/32/32	0/2/2/2
5	GOL	B	708	-	-	3/4/4/4	-
5	GOL	A	708	-	-	2/4/4/4	-
5	GOL	B	710	-	-	2/4/4/4	-
5	GOL	A	705	-	-	0/4/4/4	-
5	GOL	B	706	-	-	0/4/4/4	-
5	GOL	B	704	-	-	2/4/4/4	-
6	PEG	B	709	-	-	1/4/4/4	-
5	GOL	A	704	-	-	2/4/4/4	-
7	A2G	A	709	-	-	1/6/23/26	0/1/1/1
5	GOL	B	707	-	-	2/4/4/4	-
4	UDP	A	703	3	-	0/16/32/32	0/2/2/2
5	GOL	B	705	-	-	2/4/4/4	-
5	GOL	A	706	-	-	2/4/4/4	-

There are no bond length outliers.

All (6) bond angle outliers are listed below:

Mol	Chain	Res	Type	Atoms	Z	Observed(°)	Ideal(°)
7	A	709	A2G	C1-O5-C5	6.76	121.36	112.19
7	A	709	A2G	O5-C1-C2	4.20	117.91	111.29

Continued on next page...

Continued from previous page...

Mol	Chain	Res	Type	Atoms	Z	Observed(°)	Ideal(°)
4	B	703	UDP	PA-O3A-PB	-2.92	122.80	132.83
4	A	703	UDP	PA-O3A-PB	-2.92	122.82	132.83
4	A	703	UDP	O3B-PB-O3A	2.23	112.11	104.64
4	B	703	UDP	O3B-PB-O3A	2.22	112.09	104.64

There are no chirality outliers.

All (25) torsion outliers are listed below:

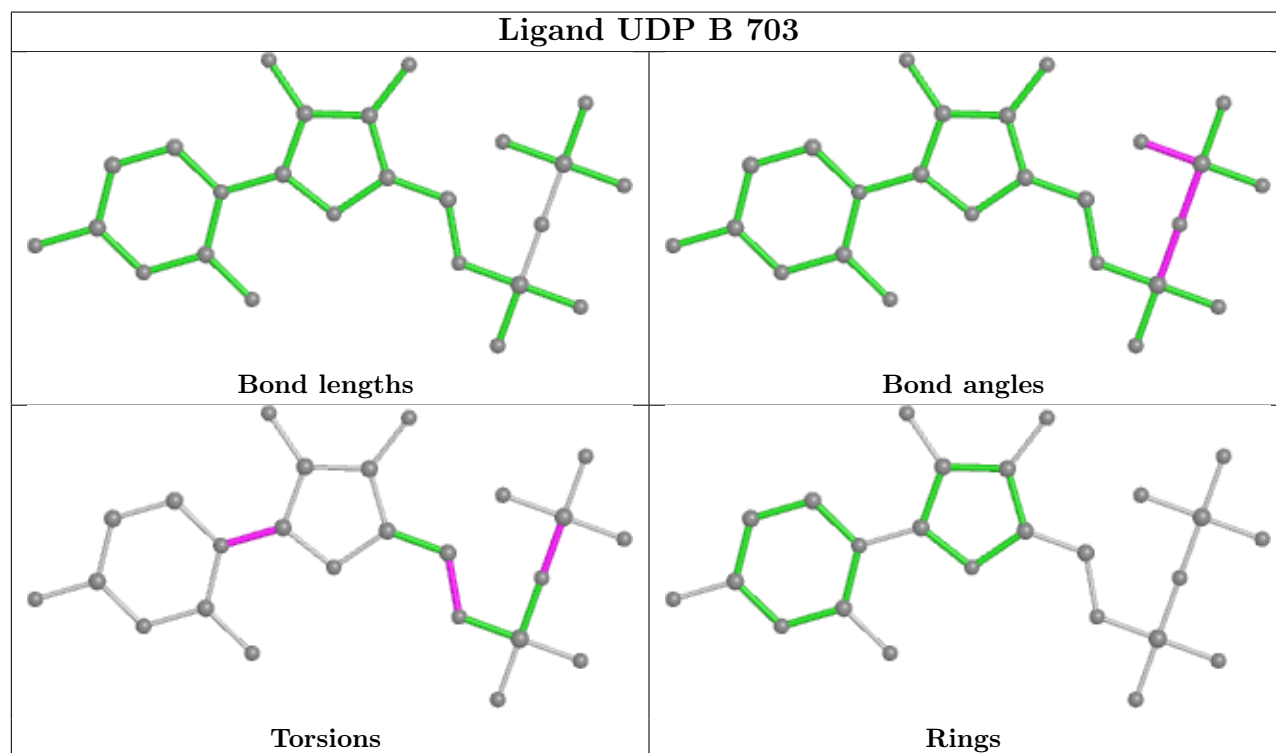
Mol	Chain	Res	Type	Atoms
4	B	703	UDP	PA-O3A-PB-O2B
5	A	704	GOL	O1-C1-C2-C3
5	A	706	GOL	O1-C1-C2-O2
5	A	706	GOL	O1-C1-C2-C3
5	B	705	GOL	O1-C1-C2-C3
5	B	710	GOL	C1-C2-C3-O3
6	A	707	PEG	O2-C3-C4-O4
6	B	709	PEG	O1-C1-C2-O2
5	B	704	GOL	O1-C1-C2-C3
5	B	707	GOL	C1-C2-C3-O3
7	A	709	A2G	O5-C5-C6-O6
5	A	704	GOL	O1-C1-C2-O2
5	B	705	GOL	O1-C1-C2-O2
5	B	707	GOL	O2-C2-C3-O3
5	B	710	GOL	O2-C2-C3-O3
5	B	704	GOL	O1-C1-C2-O2
5	A	708	GOL	O2-C2-C3-O3
5	B	708	GOL	O2-C2-C3-O3
4	B	703	UDP	C4'-C5'-O5'-PA
4	B	703	UDP	C2'-C1'-N1-C6
5	B	708	GOL	O1-C1-C2-C3
5	B	708	GOL	C1-C2-C3-O3
4	B	703	UDP	O4'-C1'-N1-C6
4	B	703	UDP	PA-O3A-PB-O1B
5	A	708	GOL	O1-C1-C2-C3

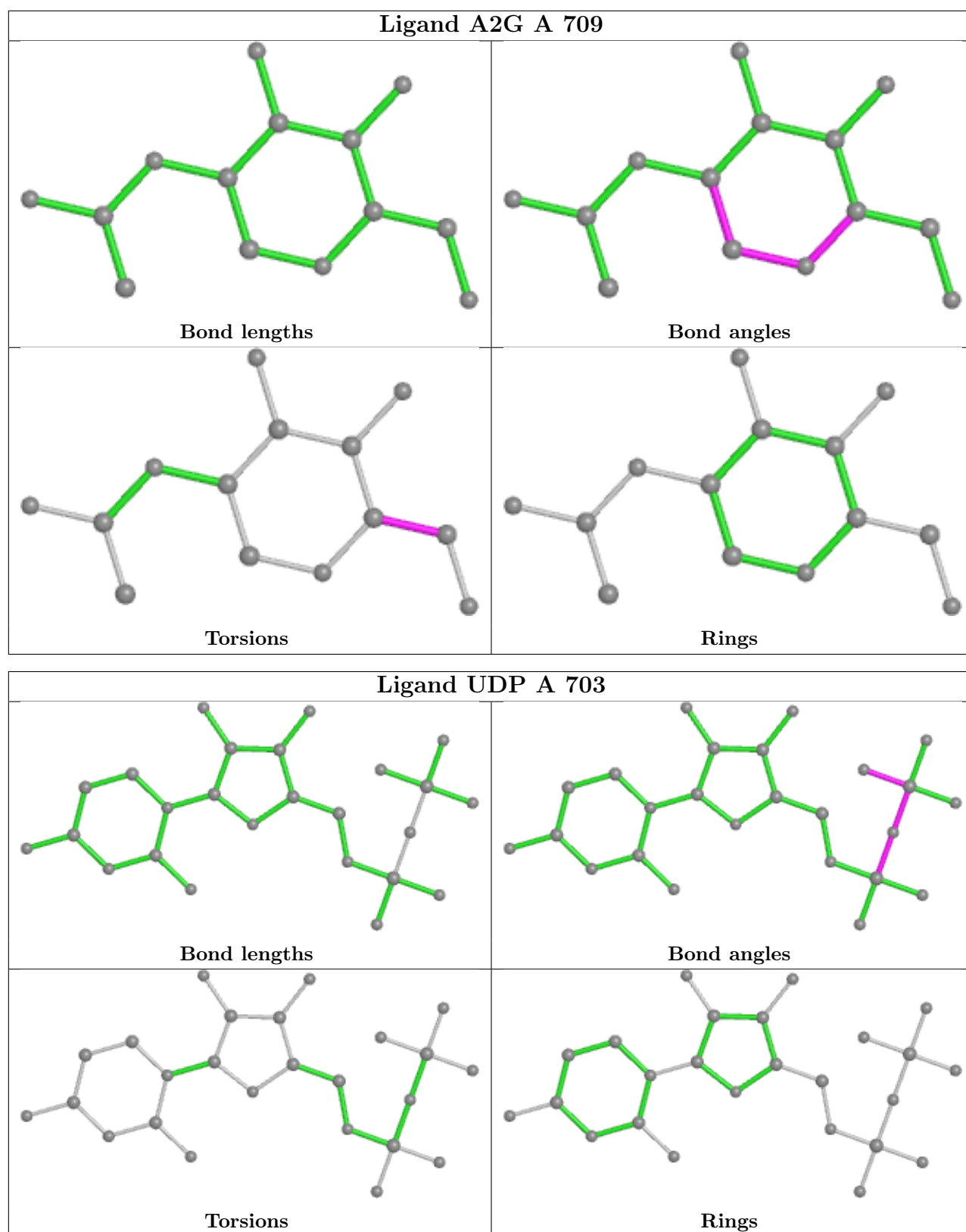
There are no ring outliers.

2 monomers are involved in 3 short contacts:

Mol	Chain	Res	Type	Clashes	Symm-Clashes
4	B	703	UDP	2	0
4	A	703	UDP	1	0

The following is a two-dimensional graphical depiction of Mogul quality analysis of bond lengths, bond angles, torsion angles, and ring geometry for all instances of the Ligand of Interest. In addition, ligands with molecular weight > 250 and outliers as shown on the validation Tables will also be included. For torsion angles, if less than 5% of the Mogul distribution of torsion angles is within 10 degrees of the torsion angle in question, then that torsion angle is considered an outlier. Any bond that is central to one or more torsion angles identified as an outlier by Mogul will be highlighted in the graph. For rings, the root-mean-square deviation (RMSD) between the ring in question and similar rings identified by Mogul is calculated over all ring torsion angles. If the average RMSD is greater than 60 degrees and the minimal RMSD between the ring in question and any Mogul-identified rings is also greater than 60 degrees, then that ring is considered an outlier. The outliers are highlighted in purple. The color gray indicates Mogul did not find sufficient equivalents in the CSD to analyse the geometry.





5.7 Other polymers [\(i\)](#)

There are no such residues in this entry.

5.8 Polymer linkage issues

There are no chain breaks in this entry.

6 Fit of model and data [i](#)

6.1 Protein, DNA and RNA chains [i](#)

In the following table, the column labelled ‘#RSRZ > 2’ contains the number (and percentage) of RSRZ outliers, followed by percent RSRZ outliers for the chain as percentile scores relative to all X-ray entries and entries of similar resolution. The OWAB column contains the minimum, median, 95th percentile and maximum values of the occupancy-weighted average B-factor per residue. The column labelled ‘Q < 0.9’ lists the number of (and percentage) of residues with an average occupancy less than 0.9.

Mol	Chain	Analysed	<RSRZ>	#RSRZ>2	OWAB(Å ²)	Q<0.9
1	A	530/563 (94%)	0.23	22 (4%) 36 41	27, 43, 74, 133	0
1	B	530/563 (94%)	0.35	42 (7%) 12 16	26, 44, 88, 146	0
2	D	2/19 (10%)	6.41	2 (100%) 0 0	90, 90, 90, 94	2 (100%)
All	All	1062/1145 (92%)	0.30	66 (6%) 20 25	26, 44, 81, 146	2 (0%)

All (66) RSRZ outliers are listed below:

Mol	Chain	Res	Type	RSRZ
1	B	101	VAL	9.5
1	B	98	ALA	8.0
2	D	3	VAL	6.9
1	B	99	LEU	6.7
1	B	630	ARG	6.0
2	D	2	THR	5.9
1	B	629	SER	5.7
1	A	319	GLY	5.5
1	B	518	TRP	5.5
1	A	320	ILE	5.1
1	A	101	VAL	5.1
1	B	320	ILE	4.6
1	B	252	VAL	4.6
1	A	99	LEU	4.5
1	A	170	GLN	4.5
1	B	102	LEU	4.4
1	B	100	GLU	4.1
1	B	421	SER	4.1
1	A	199	VAL	3.7
1	B	635	GLY	3.7
1	B	199	VAL	3.7
1	B	319	GLY	3.6
1	A	134	LEU	3.6

Continued on next page...

Continued from previous page...

Mol	Chain	Res	Type	RSRZ
1	B	628	VAL	3.5
1	B	133	ASP	3.5
1	B	202[A]	VAL	3.4
1	B	103	GLU	3.4
1	B	118	PRO	3.4
1	B	183	VAL	3.4
1	B	214	LEU	3.3
1	B	228	GLU	3.1
1	A	102	LEU	3.1
1	A	628	VAL	3.0
1	A	518	TRP	3.0
1	A	133	ASP	3.0
1	A	202	VAL	3.0
1	B	138	GLN	2.9
1	A	100	GLU	2.9
1	A	198	SER	2.9
1	A	121	GLN	2.9
1	B	185	ILE	2.8
1	B	275	LEU	2.7
1	B	201[A]	SER	2.6
1	A	183	VAL	2.6
1	A	273	ALA	2.5
1	B	198	SER	2.5
1	A	107	PRO	2.5
1	A	214[A]	LEU	2.4
1	B	519	ALA	2.4
1	B	117	LYS	2.4
1	B	251	GLU	2.3
1	B	171	LEU	2.3
1	B	200	HIS	2.2
1	A	196	MET	2.2
1	B	419	GLY	2.2
1	B	426	PRO	2.2
1	B	229	ASP	2.2
1	B	386[A]	TRP	2.1
1	B	170	GLN	2.1
1	A	366	PHE	2.1
1	B	385	PHE	2.1
1	B	230	GLY	2.1
1	B	131	PRO	2.1
1	A	321	GLY	2.1
1	B	285	TRP	2.0

Continued on next page...

Continued from previous page...

Mol	Chain	Res	Type	RSRZ
1	B	227	ARG	2.0

6.2 Non-standard residues in protein, DNA, RNA chains [i](#)

There are no non-standard protein/DNA/RNA residues in this entry.

6.3 Carbohydrates [i](#)

There are no monosaccharides in this entry.

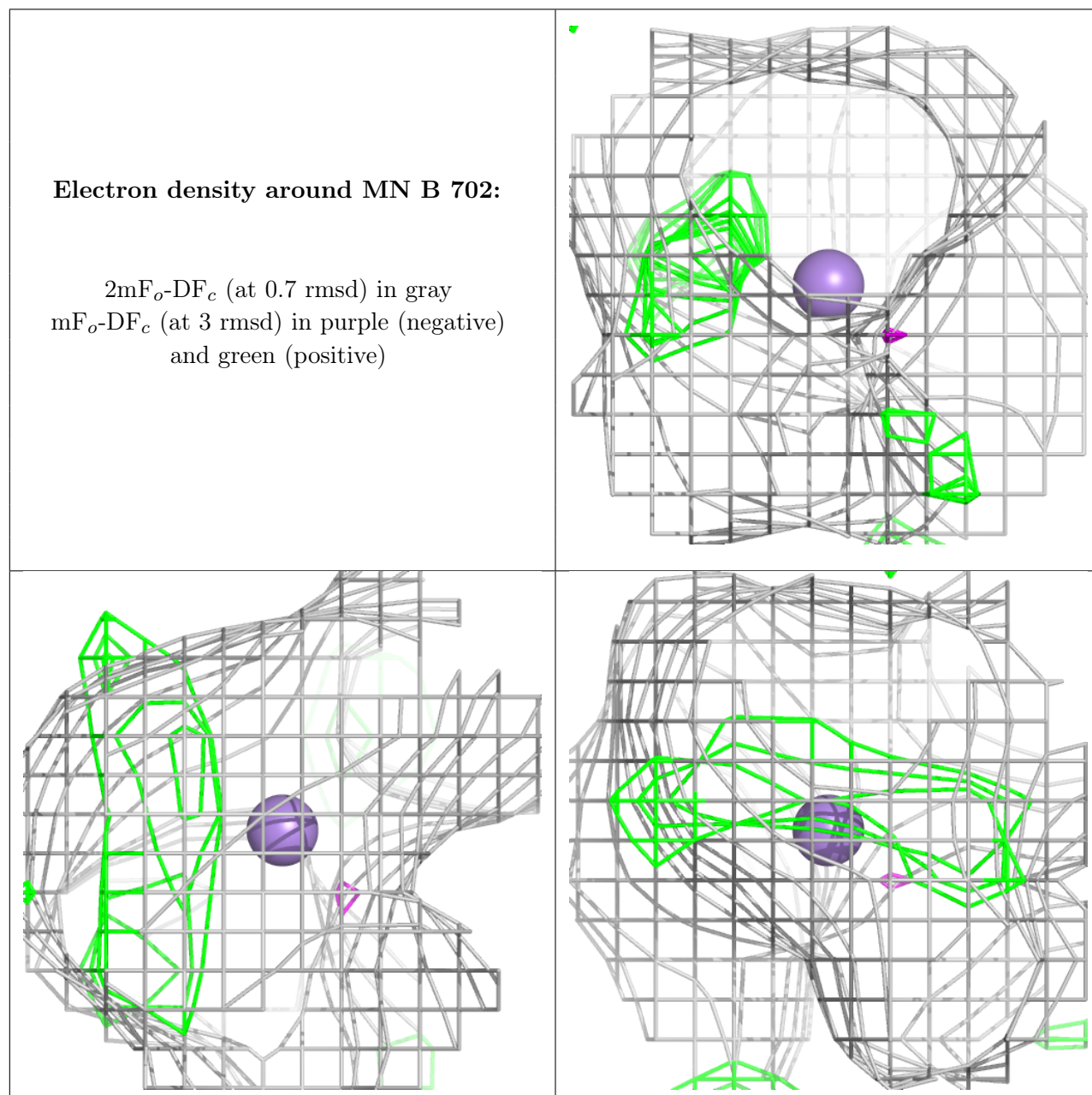
6.4 Ligands [i](#)

In the following table, the Atoms column lists the number of modelled atoms in the group and the number defined in the chemical component dictionary. The B-factors column lists the minimum, median, 95th percentile and maximum values of B factors of atoms in the group. The column labelled 'Q< 0.9' lists the number of atoms with occupancy less than 0.9.

Mol	Type	Chain	Res	Atoms	RSCC	RSR	B-factors(Å ²)	Q<0.9
3	MN	B	702	1/1	0.54	0.12	60,60,60,60	1
6	PEG	B	709	7/7	0.68	0.29	57,74,80,80	0
6	PEG	A	707	7/7	0.71	0.35	68,84,103,103	0
5	GOL	B	707	6/6	0.74	0.29	58,84,101,118	0
3	MN	A	702	1/1	0.76	0.14	81,81,81,81	1
5	GOL	B	708	6/6	0.77	0.37	58,78,97,97	0
5	GOL	B	704	6/6	0.78	0.29	67,71,76,79	0
5	GOL	A	706	6/6	0.80	0.39	76,91,100,100	0
5	GOL	A	708	6/6	0.81	0.29	61,85,105,105	0
5	GOL	B	710	6/6	0.81	0.34	55,74,89,89	0
5	GOL	A	705	6/6	0.82	0.37	53,77,93,93	0
4	UDP	B	703	25/25	0.87	0.19	39,53,70,80	23
7	A2G	A	709	14/15	0.89	0.23	40,63,76,76	25
5	GOL	A	704	6/6	0.90	0.25	65,78,88,100	0
5	GOL	B	706	6/6	0.90	0.36	58,79,110,112	0
5	GOL	B	705	6/6	0.91	0.36	72,87,98,98	0
4	UDP	A	703	25/25	0.97	0.12	34,43,52,55	5
3	MN	A	701	1/1	0.99	0.12	32,32,32,32	0
3	MN	B	701	1/1	0.99	0.09	38,38,38,38	0

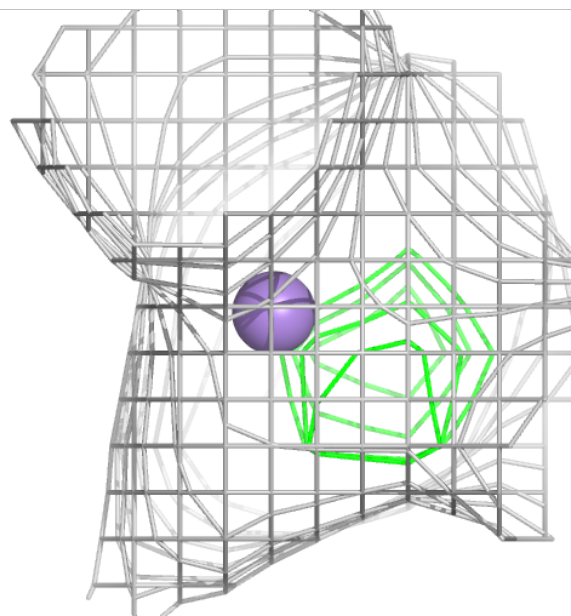
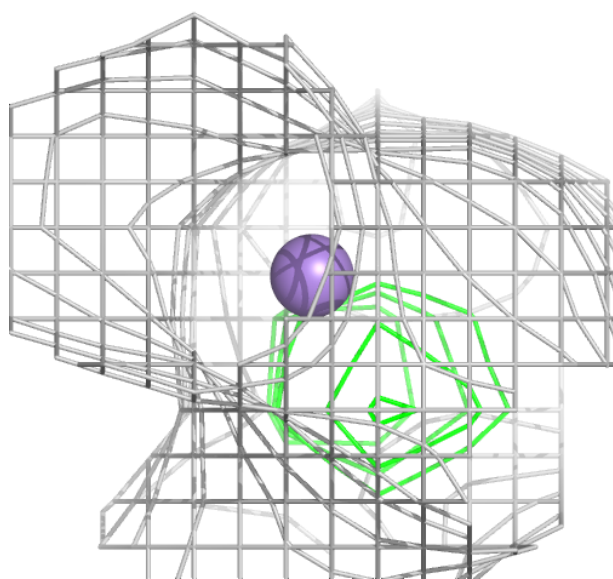
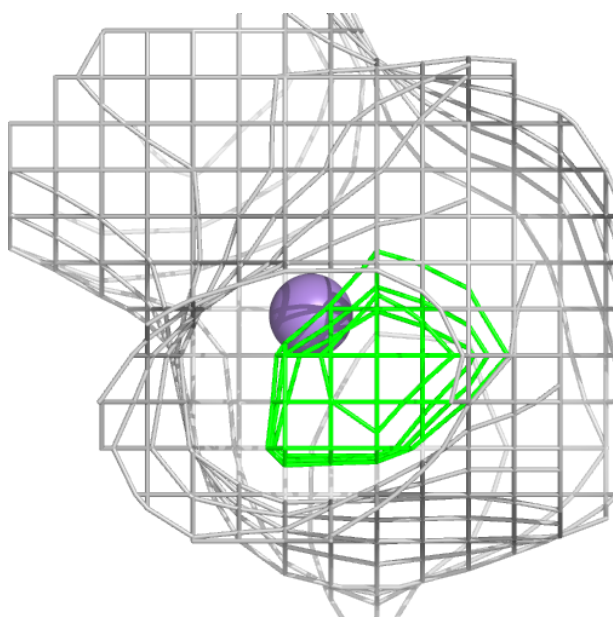
The following is a graphical depiction of the model fit to experimental electron density of all instances of the Ligand of Interest. In addition, ligands with molecular weight > 250 and outliers

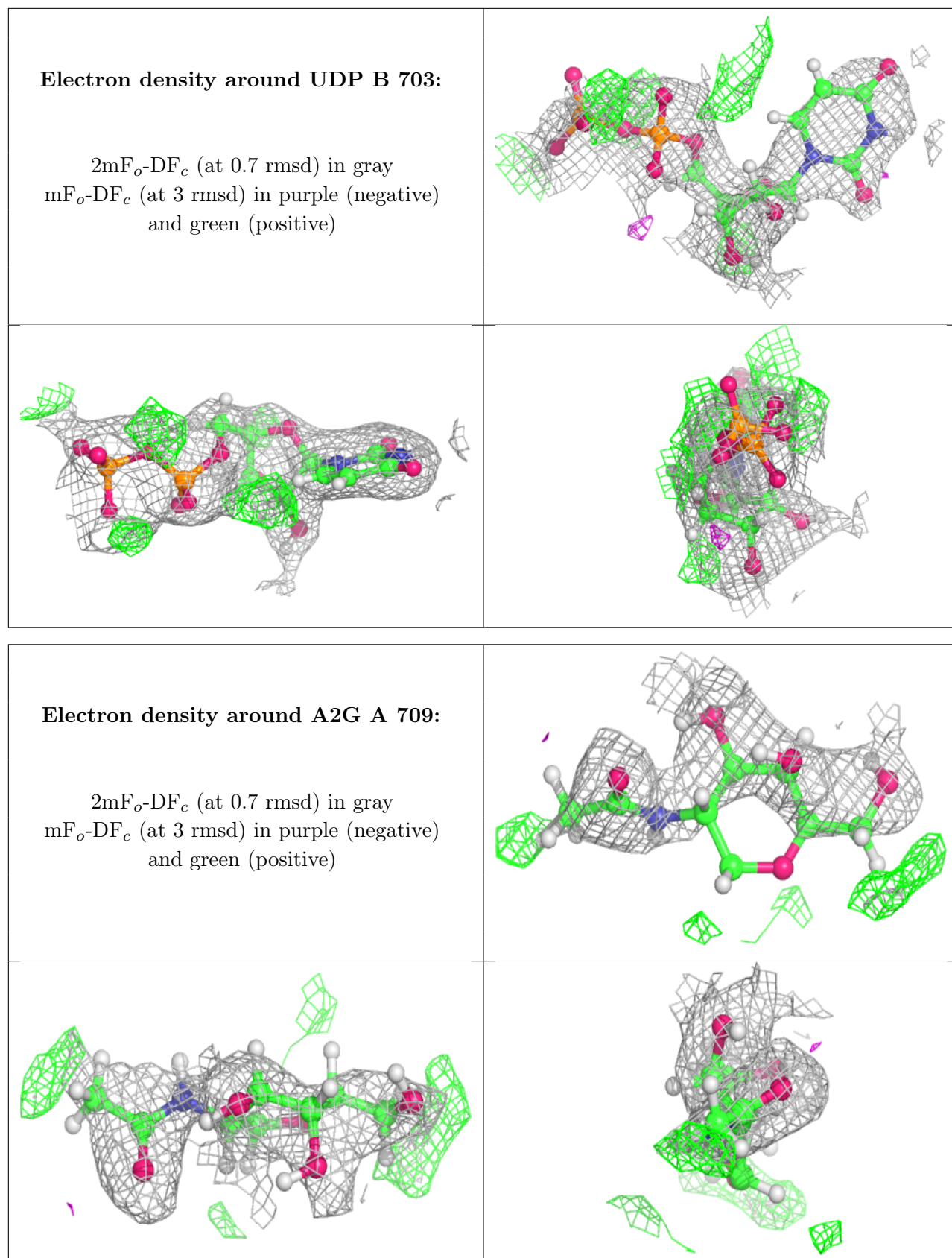
as shown on the geometry validation Tables will also be included. Each fit is shown from different orientation to approximate a three-dimensional view.



Electron density around MN A 702:

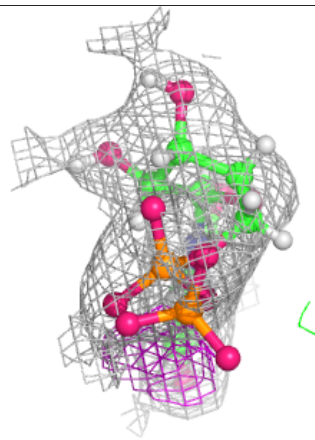
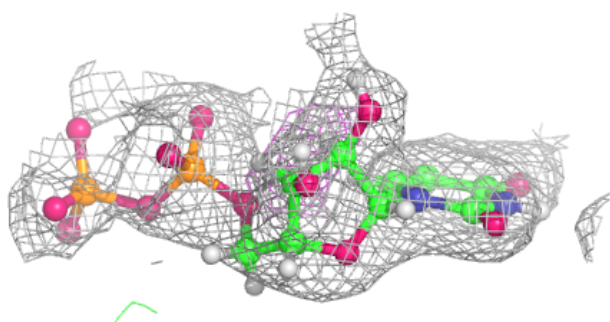
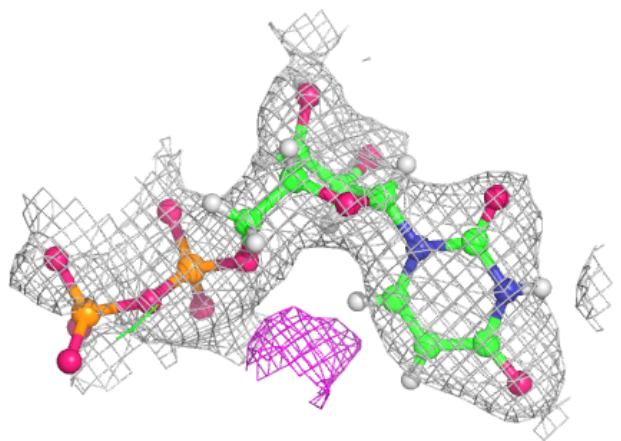
$2mF_o-DF_c$ (at 0.7 rmsd) in gray
 mF_o-DF_c (at 3 rmsd) in purple (negative)
and green (positive)





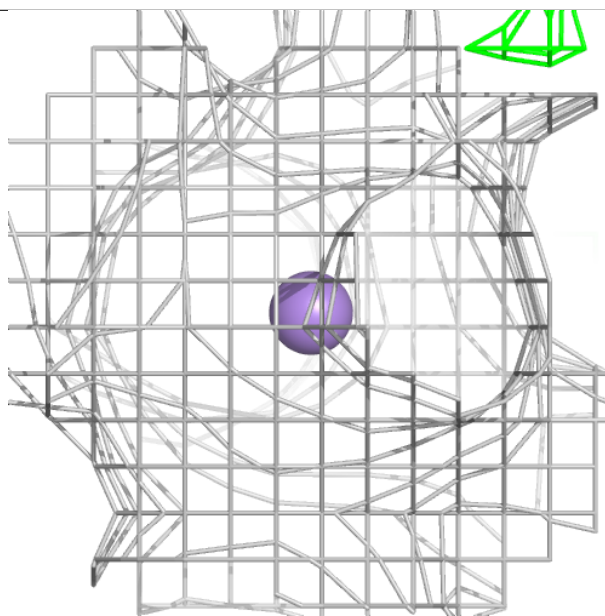
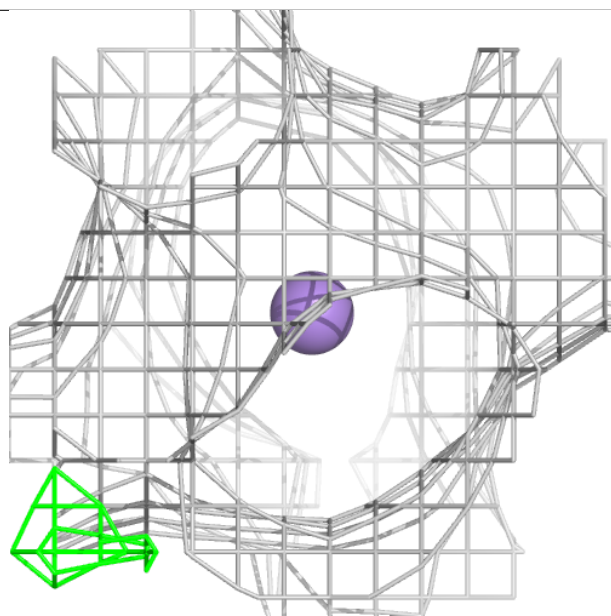
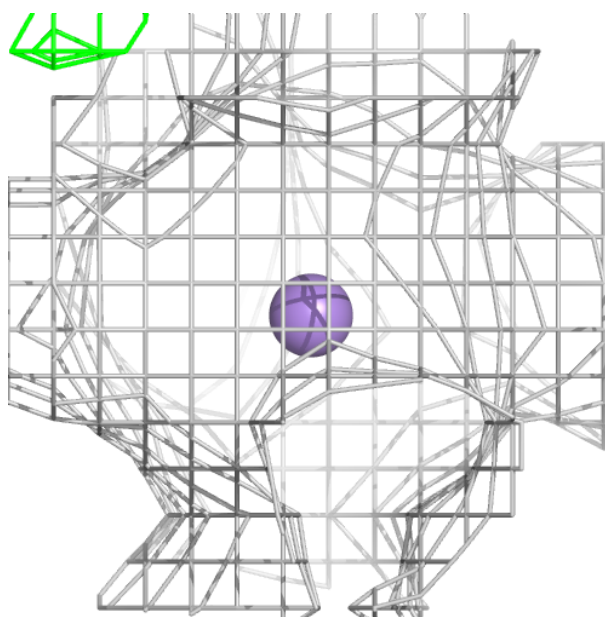
Electron density around UDP A 703:

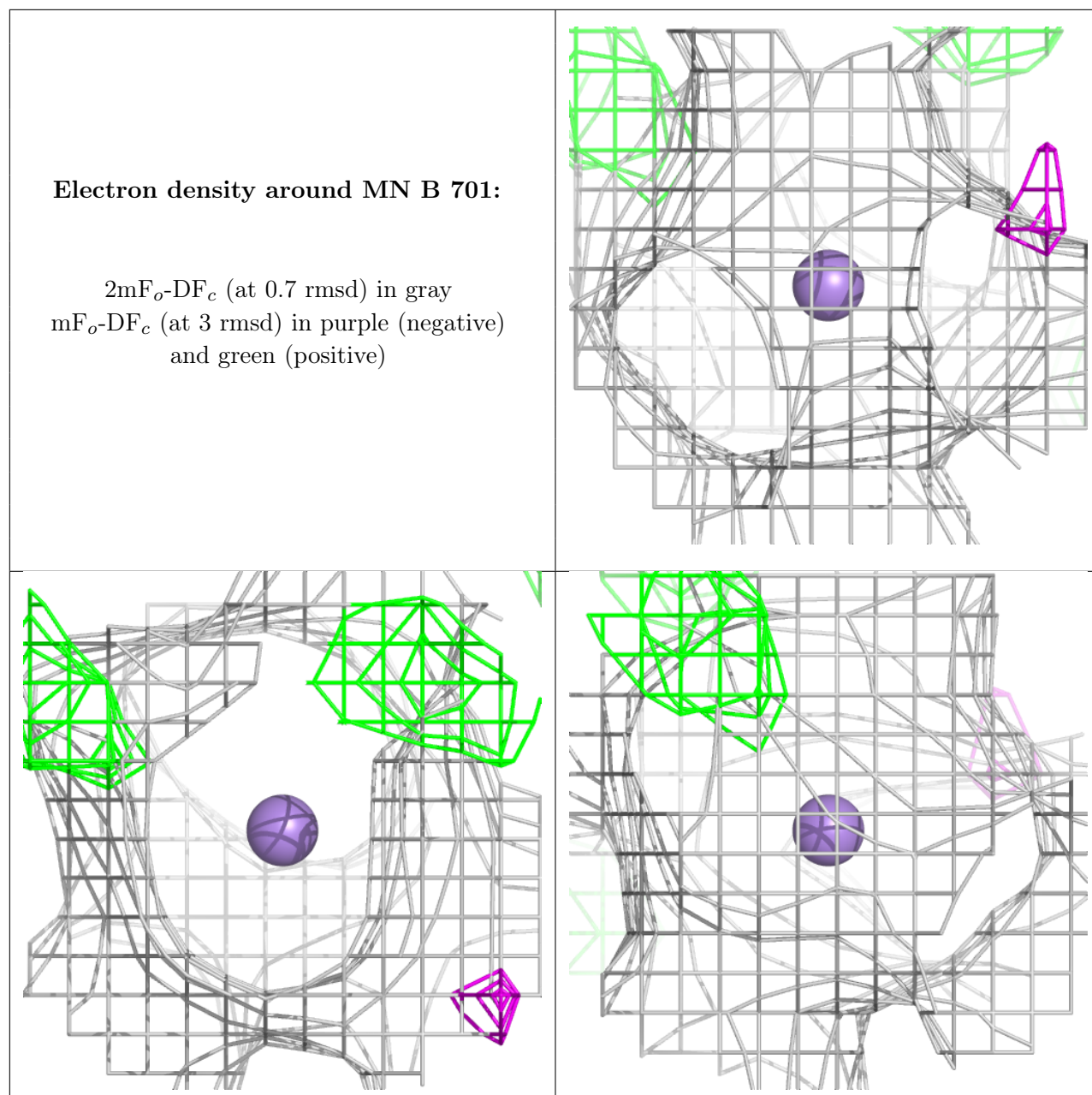
$2mF_o-DF_c$ (at 0.7 rmsd) in gray
 mF_o-DF_c (at 3 rmsd) in purple (negative)
and green (positive)



Electron density around MN A 701:

$2mF_o-DF_c$ (at 0.7 rmsd) in gray
 mF_o-DF_c (at 3 rmsd) in purple (negative)
and green (positive)





6.5 Other polymers ⓘ

There are no such residues in this entry.