



Full wwPDB X-ray Structure Validation Report ⓘ

Jul 16, 2024 – 06:03 PM EDT

PDB ID : 8UGT
Title : E. eligens beta-glucuronidase bound to UNC10206581-G
Authors : Simpson, J.B.; Redinbo, M.R.
Deposited on : 2023-10-06
Resolution : 2.65 Å(reported)

This is a Full wwPDB X-ray Structure Validation Report for a publicly released PDB entry.

We welcome your comments at validation@mail.wwpdb.org

A user guide is available at

<https://www.wwpdb.org/validation/2017/XrayValidationReportHelp>

with specific help available everywhere you see the ⓘ symbol.

The types of validation reports are described at

<http://www.wwpdb.org/validation/2017/FAQs#types>.

The following versions of software and data (see [references ⓘ](#)) were used in the production of this report:

MolProbity : 4.02b-467
Mogul : 1.8.5 (274361), CSD as541be (2020)
Xtriage (Phenix) : 1.13
EDS : 2.37.1
buster-report : 1.1.7 (2018)
Percentile statistics : 20191225.v01 (using entries in the PDB archive December 25th 2019)
Refmac : 5.8.0158
CCP4 : 7.0.044 (Gargrove)
Ideal geometry (proteins) : Engh & Huber (2001)
Ideal geometry (DNA, RNA) : Parkinson et al. (1996)
Validation Pipeline (wwPDB-VP) : 2.37.1

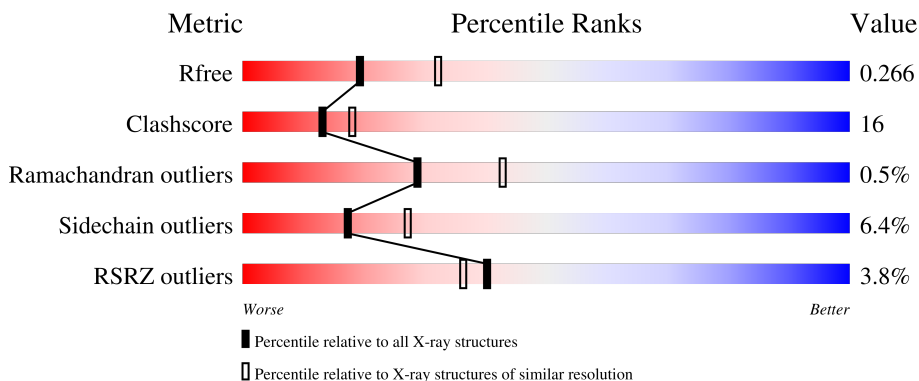
1 Overall quality at a glance

The following experimental techniques were used to determine the structure:

X-RAY DIFFRACTION

The reported resolution of this entry is 2.65 Å.

Percentile scores (ranging between 0-100) for global validation metrics of the entry are shown in the following graphic. The table shows the number of entries on which the scores are based.



Metric	Whole archive (#Entries)	Similar resolution (#Entries, resolution range(Å))
R_{free}	130704	1332 (2.68-2.64)
Clashscore	141614	1374 (2.68-2.64)
Ramachandran outliers	138981	1349 (2.68-2.64)
Sidechain outliers	138945	1349 (2.68-2.64)
RSRZ outliers	127900	1318 (2.68-2.64)

The table below summarises the geometric issues observed across the polymeric chains and their fit to the electron density. The red, orange, yellow and green segments of the lower bar indicate the fraction of residues that contain outliers for ≥ 3 , 2, 1 and 0 types of geometric quality criteria respectively. A grey segment represents the fraction of residues that are not modelled. The numeric value for each fraction is indicated below the corresponding segment, with a dot representing fractions $\leq 5\%$. The upper red bar (where present) indicates the fraction of residues that have poor fit to the electron density. The numeric value is given above the bar.

Mol	Chain	Length	Quality of chain
1	A	614	

2 Entry composition [i](#)

There are 4 unique types of molecules in this entry. The entry contains 4718 atoms, of which 65 are hydrogens and 0 are deuteriums.

In the tables below, the ZeroOcc column contains the number of atoms modelled with zero occupancy, the AltConf column contains the number of residues with at least one atom in alternate conformation and the Trace column contains the number of residues modelled with at most 2 atoms.

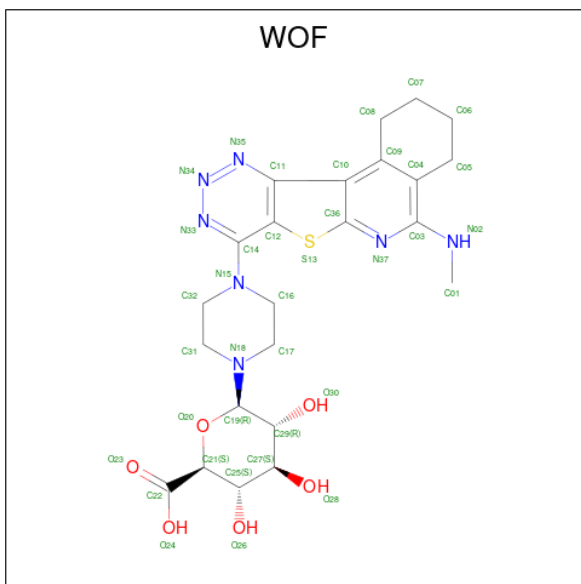
- Molecule 1 is a protein called Beta-glucuronidase.

Mol	Chain	Residues	Atoms					ZeroOcc	AltConf	Trace
			Total	C	N	O	S			
1	A	580	4579	2920	757	881	21	0	0	0

There are 4 discrepancies between the modelled and reference sequences:

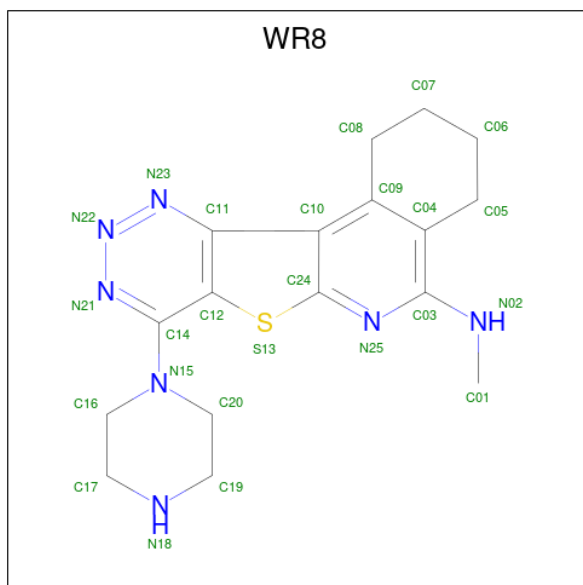
Chain	Residue	Modelled	Actual	Comment	Reference
A	-2	SER	-	expression tag	UNP A0A174ZZA3
A	-1	ASN	-	expression tag	UNP A0A174ZZA3
A	0	ALA	-	expression tag	UNP A0A174ZZA3
A	120	ASP	HIS	conflict	UNP A0A174ZZA3

- Molecule 2 is 8-(4-beta-D-glucopyranuronosylpiperazin-1-yl)-5-(methylamino)-1,2,3,4-tetrahydro[1,2,3]triazino[4',5':4,5]thieno[2,3-c]isoquinoline (three-letter code: WOF) (formula: C₂₃H₂₉N₇O₆S) (labeled as "Ligand of Interest" by depositor).



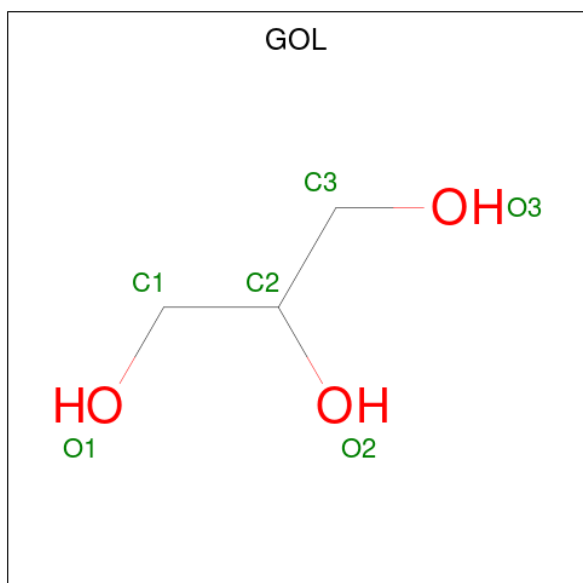
Mol	Chain	Residues	Atoms					ZeroOcc	AltConf	
			Total	C	H	N	O			S
2	A	1	65	23	28	7	6	1	0	0

- Molecule 3 is N-methyl-8-(piperazin-1-yl)-1,2,3,4-tetrahydro[1,2,3]triazino[4',5':4,5]thieno[2,3-c]isoquinolin-5-amine (three-letter code: WR8) (formula: C₁₇H₂₁N₇S) (labeled as "Ligand of Interest" by depositor).



Mol	Chain	Residues	Atoms					ZeroOcc	AltConf
			Total	C	H	N	S		
3	A	1	46	17	21	7	1	0	0

- Molecule 4 is GLYCEROL (three-letter code: GOL) (formula: C₃H₈O₃).



Mol	Chain	Residues	Atoms				ZeroOcc	AltConf
4	A	1	Total	C	H	O	0	0
			14	3	8	3		
4	A	1	Total	C	H	O	0	0
			14	3	8	3		

4 Data and refinement statistics

Property	Value	Source
Space group	P 64 2 2	Depositor
Cell constants a, b, c, α , β , γ	179.94Å 179.94Å 132.79Å 90.00° 90.00° 120.00°	Depositor
Resolution (Å)	44.98 – 2.65 44.98 – 2.65	Depositor EDS
% Data completeness (in resolution range)	100.0 (44.98-2.65) 100.0 (44.98-2.65)	Depositor EDS
R_{merge}	0.04	Depositor
R_{sym}	(Not available)	Depositor
$\langle I/\sigma(I) \rangle$ ¹	1.49 (at 2.65Å)	Xtrriage
Refinement program	PHENIX 1.19.2_4158	Depositor
R, R_{free}	0.239 , 0.267 0.237 , 0.266	Depositor DCC
R_{free} test set	2000 reflections (5.37%)	wwPDB-VP
Wilson B-factor (Å ²)	64.7	Xtrriage
Anisotropy	0.311	Xtrriage
Bulk solvent k_{sol} (e/Å ³), B_{sol} (Å ²)	0.34 , 61.4	EDS
L-test for twinning ²	$\langle L \rangle = 0.48$, $\langle L^2 \rangle = 0.31$	Xtrriage
Estimated twinning fraction	No twinning to report.	Xtrriage
F_o, F_c correlation	0.93	EDS
Total number of atoms	4718	wwPDB-VP
Average B, all atoms (Å ²)	67.0	wwPDB-VP

Xtrriage's analysis on translational NCS is as follows: *The largest off-origin peak in the Patterson function is 3.28% of the height of the origin peak. No significant pseudotranslation is detected.*

¹Intensities estimated from amplitudes.

²Theoretical values of $\langle |L| \rangle$, $\langle L^2 \rangle$ for acentric reflections are 0.5, 0.333 respectively for untwinned datasets, and 0.375, 0.2 for perfectly twinned datasets.

5 Model quality [i](#)

5.1 Standard geometry [i](#)

Bond lengths and bond angles in the following residue types are not validated in this section: WOF, GOL, WR8

The Z score for a bond length (or angle) is the number of standard deviations the observed value is removed from the expected value. A bond length (or angle) with $|Z| > 5$ is considered an outlier worth inspection. RMSZ is the root-mean-square of all Z scores of the bond lengths (or angles).

Mol	Chain	Bond lengths		Bond angles	
		RMSZ	# Z >5	RMSZ	# Z >5
1	A	0.50	0/4696	0.65	0/6385

There are no bond length outliers.

There are no bond angle outliers.

There are no chirality outliers.

There are no planarity outliers.

5.2 Too-close contacts [i](#)

In the following table, the Non-H and H(model) columns list the number of non-hydrogen atoms and hydrogen atoms in the chain respectively. The H(added) column lists the number of hydrogen atoms added and optimized by MolProbity. The Clashes column lists the number of clashes within the asymmetric unit, whereas Symm-Clashes lists symmetry-related clashes.

Mol	Chain	Non-H	H(model)	H(added)	Clashes	Symm-Clashes
1	A	4579	0	4288	145	0
2	A	37	28	0	1	0
3	A	25	21	0	1	0
4	A	12	16	16	2	0
All	All	4653	65	4304	146	0

The all-atom clashscore is defined as the number of clashes found per 1000 atoms (including hydrogen atoms). The all-atom clashscore for this structure is 16.

All (146) close contacts within the same asymmetric unit are listed below, sorted by their clash magnitude.

Atom-1	Atom-2	Interatomic distance (Å)	Clash overlap (Å)
1:A:210:SER:HB2	1:A:254:SER:HA	1.21	1.16
1:A:189:PRO:HG2	1:A:276:ASP:HB2	1.43	0.98
1:A:82:ARG:HB3	1:A:188:THR:HG22	1.49	0.93
1:A:82:ARG:HE	1:A:188:THR:HG21	1.40	0.85
1:A:98:LEU:HD11	1:A:126:ASN:HB3	1.60	0.81
1:A:72:ILE:HG22	1:A:126:ASN:HB2	1.62	0.80
1:A:522:VAL:HB	1:A:525:LEU:HD12	1.64	0.77
1:A:36:LYS:HE2	1:A:36:LYS:HA	1.68	0.76
1:A:443:LEU:HD12	1:A:447:LEU:HD13	1.66	0.76
1:A:82:ARG:HB3	1:A:188:THR:CG2	2.18	0.74
1:A:12:LEU:HD13	1:A:186:TYR:HB3	1.67	0.73
1:A:188:THR:HG23	1:A:189:PRO:O	1.89	0.72
1:A:443:LEU:CD1	1:A:447:LEU:HD13	2.20	0.72
1:A:85:LEU:HB2	1:A:117:LEU:HD11	1.70	0.72
1:A:280:LEU:HD22	1:A:281:PRO:HD2	1.74	0.69
1:A:98:LEU:HD12	1:A:99:ASN:N	2.09	0.68
1:A:448:ASP:OD2	1:A:452:ARG:HB2	1.93	0.68
1:A:72:ILE:HD11	1:A:185:ILE:HD11	1.75	0.68
1:A:210:SER:CB	1:A:254:SER:HA	2.14	0.66
1:A:308:LYS:O	1:A:342:SER:HB2	1.96	0.66
1:A:404:ILE:O	1:A:408:ILE:HG13	1.97	0.64
1:A:512:VAL:HG12	1:A:554:PHE:HD1	1.63	0.64
1:A:82:ARG:NE	1:A:188:THR:HG21	2.14	0.63
1:A:484:TRP:CZ2	1:A:520:ASP:HB2	2.33	0.63
1:A:70:ARG:NH1	1:A:71:ASN:O	2.32	0.62
1:A:127:LEU:O	1:A:127:LEU:HD23	1.98	0.62
1:A:181:ARG:HB3	1:A:182:PRO:CD	2.29	0.62
1:A:532:MET:O	1:A:533:TYR:HB2	1.98	0.62
1:A:2:LEU:O	1:A:86:ARG:NH2	2.29	0.61
1:A:527:ASP:OD2	4:A:704:GOL:H11	2.01	0.61
1:A:447:LEU:O	1:A:449:PRO:HD3	2.01	0.61
1:A:512:VAL:O	1:A:555:VAL:HA	2.02	0.60
1:A:522:VAL:HB	1:A:525:LEU:CD1	2.32	0.59
1:A:98:LEU:HD12	1:A:99:ASN:H	1.67	0.59
1:A:70:ARG:HG2	1:A:71:ASN:N	2.17	0.59
1:A:257:ARG:N	1:A:267:TYR:OH	2.30	0.58
1:A:193:ILE:HG13	1:A:276:ASP:OD2	2.03	0.58
1:A:295:LEU:HA	1:A:299:LYS:O	2.05	0.57
1:A:82:ARG:CB	1:A:188:THR:HG22	2.27	0.57
1:A:229:CYS:HB2	1:A:273:ALA:HB2	1.87	0.56
1:A:402:ASP:O	1:A:405:ARG:HG3	2.05	0.56
1:A:92:HIS:HB2	1:A:133:ASN:O	2.05	0.56

Continued on next page...

Continued from previous page...

Atom-1	Atom-2	Interatomic distance (Å)	Clash overlap (Å)
1:A:169:PRO:HB3	1:A:171:PHE:CZ	2.40	0.56
1:A:443:LEU:HD12	1:A:443:LEU:O	2.07	0.55
1:A:181:ARG:HB3	1:A:182:PRO:HD3	1.89	0.55
1:A:296:ILE:HD12	1:A:301:PHE:CG	2.42	0.55
1:A:76:GLU:C	1:A:78:VAL:H	2.11	0.54
1:A:272:THR:HG23	1:A:277:VAL:HB	1.88	0.54
1:A:258:LEU:HD22	1:A:284:VAL:HG12	1.90	0.54
1:A:1:MET:HE1	1:A:86:ARG:NE	2.22	0.54
1:A:0:ALA:HA	1:A:409:SER:OG	2.07	0.54
1:A:310:GLU:O	1:A:317:ARG:HA	2.08	0.53
1:A:531:VAL:HG23	1:A:534:THR:CG2	2.38	0.53
1:A:141:LEU:HD22	1:A:367:ALA:HA	1.91	0.53
1:A:259:TRP:O	1:A:260:GLN:HG2	2.09	0.53
1:A:288:ARG:O	1:A:295:LEU:HB2	2.08	0.53
1:A:456:LEU:HD12	1:A:456:LEU:C	2.29	0.53
1:A:96:ILE:N	1:A:96:ILE:HD12	2.23	0.52
1:A:364:GLU:OE2	1:A:424:ASN:HB2	2.10	0.52
1:A:36:LYS:HD3	1:A:37:PRO:HD2	1.92	0.52
1:A:81:GLN:HB3	1:A:188:THR:O	2.09	0.52
1:A:486:PHE:HB2	2:A:701:WOF:C01	2.40	0.52
1:A:22:LYS:HE3	1:A:39:LYS:O	2.10	0.52
1:A:37:PRO:HA	1:A:69:GLN:OE1	2.10	0.52
1:A:258:LEU:CD2	1:A:284:VAL:HG12	2.40	0.51
1:A:343:HIS:N	1:A:343:HIS:ND1	2.59	0.51
1:A:121:LEU:HD13	1:A:122:GLN:O	2.10	0.51
1:A:229:CYS:HB2	1:A:273:ALA:CB	2.41	0.51
1:A:84:VAL:HG11	1:A:186:TYR:CE2	2.46	0.51
1:A:341:THR:O	1:A:364:GLU:HB3	2.11	0.51
1:A:562:ASN:O	1:A:581:GLY:HA2	2.12	0.50
1:A:476:ILE:HG21	1:A:505:TRP:CE3	2.47	0.50
1:A:92:HIS:H	1:A:109:GLY:HA3	1.77	0.49
1:A:117:LEU:O	1:A:121:LEU:HB2	2.12	0.49
1:A:280:LEU:HD13	1:A:281:PRO:O	2.13	0.49
1:A:10:ARG:HB3	1:A:187:THR:O	2.13	0.49
1:A:6:LEU:HD13	1:A:6:LEU:HA	1.70	0.48
1:A:126:ASN:N	1:A:126:ASN:HD22	2.10	0.48
1:A:75:PRO:HB2	1:A:77:TYR:CE2	2.48	0.48
1:A:84:VAL:HG11	1:A:186:TYR:CZ	2.48	0.48
1:A:91:THR:HB	1:A:177:CYS:HA	1.95	0.47
1:A:521:THR:HG21	1:A:535:GLU:HA	1.96	0.47
1:A:92:HIS:H	1:A:109:GLY:CA	2.27	0.47

Continued on next page...

Continued from previous page...

Atom-1	Atom-2	Interatomic distance (Å)	Clash overlap (Å)
1:A:192:TYR:O	1:A:219:ILE:HG23	2.15	0.46
1:A:36:LYS:HA	1:A:36:LYS:CE	2.41	0.46
1:A:121:LEU:HD22	1:A:126:ASN:OD1	2.15	0.45
1:A:212:VAL:HG23	1:A:251:PHE:O	2.16	0.45
1:A:90:VAL:CG1	1:A:132:VAL:HG22	2.46	0.45
1:A:328:ILE:HD12	1:A:353:LEU:HD23	1.99	0.45
1:A:401:LYS:HG3	1:A:440:LEU:CD2	2.46	0.45
1:A:206:LYS:O	1:A:209:PRO:HD3	2.15	0.45
1:A:98:LEU:C	1:A:100:GLY:H	2.20	0.45
1:A:531:VAL:HG21	4:A:704:GOL:H12	1.99	0.45
1:A:484:TRP:HZ2	1:A:520:ASP:HB2	1.80	0.45
1:A:192:TYR:O	1:A:219:ILE:HA	2.17	0.44
1:A:338:SER:HA	1:A:360:VAL:O	2.17	0.44
1:A:82:ARG:NE	1:A:192:TYR:CE2	2.85	0.44
1:A:169:PRO:HB3	1:A:171:PHE:CE2	2.53	0.44
1:A:217:VAL:HG12	1:A:218:GLU:N	2.32	0.44
1:A:340:ARG:HD2	1:A:364:GLU:OE1	2.17	0.44
1:A:448:ASP:OD2	1:A:452:ARG:N	2.40	0.44
1:A:3:TYR:CD2	1:A:352:ARG:CZ	3.01	0.43
1:A:259:TRP:CZ2	1:A:358:GLY:HA2	2.53	0.43
1:A:76:GLU:O	1:A:78:VAL:N	2.52	0.43
1:A:334:GLN:O	1:A:335:HIS:HB2	2.17	0.43
1:A:434:TYR:CZ	1:A:438:LYS:HD2	2.53	0.43
1:A:459:VAL:HG22	1:A:460:GLN:N	2.33	0.43
1:A:271:VAL:O	1:A:277:VAL:HA	2.19	0.43
1:A:499:ARG:O	1:A:503:SER:HB2	2.19	0.43
1:A:76:GLU:C	1:A:78:VAL:N	2.72	0.43
1:A:74:VAL:HG22	1:A:75:PRO:HD2	2.01	0.42
3:A:702:WR8:S13	3:A:702:WR8:C16	3.07	0.42
1:A:373:GLN:HG2	1:A:374:PHE:CD1	2.54	0.42
1:A:420:TRP:O	1:A:455:THR:HG22	2.19	0.42
1:A:9:SER:CB	1:A:276:ASP:HA	2.49	0.42
1:A:9:SER:HB3	1:A:277:VAL:H	1.85	0.42
1:A:340:ARG:O	1:A:342:SER:N	2.53	0.42
1:A:552:PHE:HB3	1:A:554:PHE:CE2	2.55	0.42
1:A:521:THR:OG1	1:A:538:GLN:HB2	2.20	0.42
1:A:76:GLU:O	1:A:79:LYS:HG2	2.20	0.42
1:A:561:TRP:HA	1:A:562:ASN:HA	1.66	0.42
1:A:28:GLY:O	1:A:31:GLU:O	2.38	0.42
1:A:106:HIS:ND1	1:A:113:PHE:HB3	2.34	0.42
1:A:231:VAL:HG22	1:A:271:VAL:HG12	2.01	0.42

Continued on next page...

Continued from previous page...

Atom-1	Atom-2	Interatomic distance (Å)	Clash overlap (Å)
1:A:47:PRO:O	1:A:48:ALA:HB2	2.19	0.41
1:A:23:LEU:HD23	1:A:66:VAL:HG12	2.02	0.41
1:A:191:THR:HA	1:A:220:LYS:O	2.19	0.41
1:A:107:LYS:HG2	1:A:399:HIS:CD2	2.55	0.41
1:A:317:ARG:HD3	1:A:344:TYR:CZ	2.55	0.41
1:A:82:ARG:CG	1:A:188:THR:HG22	2.50	0.41
1:A:341:THR:HA	1:A:346:TYR:CZ	2.56	0.41
1:A:472:LEU:HD23	1:A:472:LEU:N	2.35	0.41
1:A:37:PRO:O	1:A:39:LYS:HG3	2.21	0.41
1:A:457:VAL:HG13	1:A:515:THR:OG1	2.20	0.41
1:A:266:LEU:HD23	1:A:281:PRO:HB2	2.02	0.41
1:A:468:CYS:O	1:A:472:LEU:HG	2.20	0.41
1:A:512:VAL:CG1	1:A:554:PHE:HD1	2.31	0.41
1:A:1:MET:HB3	1:A:1:MET:HE3	1.93	0.40
1:A:531:VAL:HG23	1:A:534:THR:HG21	2.01	0.40
1:A:9:SER:HB2	1:A:276:ASP:HA	2.03	0.40
1:A:31:GLU:H	1:A:31:GLU:HG3	1.74	0.40
1:A:219:ILE:HG22	1:A:220:LYS:N	2.35	0.40
1:A:306:TYR:CE1	1:A:331:MET:HG2	2.57	0.40
1:A:121:LEU:HD22	1:A:121:LEU:HA	1.90	0.40
1:A:191:THR:HG22	1:A:221:GLY:C	2.42	0.40
1:A:305:GLY:HA3	1:A:338:SER:O	2.22	0.40

There are no symmetry-related clashes.

5.3 Torsion angles [i](#)

5.3.1 Protein backbone [i](#)

In the following table, the Percentiles column shows the percent Ramachandran outliers of the chain as a percentile score with respect to all X-ray entries followed by that with respect to entries of similar resolution.

The Analysed column shows the number of residues for which the backbone conformation was analysed, and the total number of residues.

Mol	Chain	Analysed	Favoured	Allowed	Outliers	Percentiles
1	A	572/614 (93%)	525 (92%)	44 (8%)	3 (0%)	29 43

All (3) Ramachandran outliers are listed below:

Mol	Chain	Res	Type
1	A	92	HIS
1	A	341	THR
1	A	77	TYR

5.3.2 Protein sidechains [i](#)

In the following table, the Percentiles column shows the percent sidechain outliers of the chain as a percentile score with respect to all X-ray entries followed by that with respect to entries of similar resolution.

The Analysed column shows the number of residues for which the sidechain conformation was analysed, and the total number of residues.

Mol	Chain	Analysed	Rotameric	Outliers	Percentiles
1	A	484/533 (91%)	453 (94%)	31 (6%)	17 27

All (31) residues with a non-rotameric sidechain are listed below:

Mol	Chain	Res	Type
1	A	6	LEU
1	A	7	THR
1	A	8	GLN
1	A	9	SER
1	A	10	ARG
1	A	13	SER
1	A	42	ASP
1	A	70	ARG
1	A	72	ILE
1	A	73	SER
1	A	74	VAL
1	A	80	SER
1	A	82	ARG
1	A	103	ILE
1	A	205	THR
1	A	210	SER
1	A	229	CYS
1	A	235	ASP
1	A	251	PHE
1	A	272	THR
1	A	285	ARG
1	A	306	TYR
1	A	309	HIS
1	A	343	HIS

Continued on next page...

Continued from previous page...

Mol	Chain	Res	Type
1	A	500	LYS
1	A	503	SER
1	A	517	TYR
1	A	527	ASP
1	A	531	VAL
1	A	571	SER
1	A	609	LYS

Sometimes sidechains can be flipped to improve hydrogen bonding and reduce clashes. All (1) such sidechains are listed below:

Mol	Chain	Res	Type
1	A	424	ASN

5.3.3 RNA [i](#)

There are no RNA molecules in this entry.

5.4 Non-standard residues in protein, DNA, RNA chains [i](#)

There are no non-standard protein/DNA/RNA residues in this entry.

5.5 Carbohydrates [i](#)

There are no monosaccharides in this entry.

5.6 Ligand geometry [i](#)

4 ligands are modelled in this entry.

In the following table, the Counts columns list the number of bonds (or angles) for which Mogul statistics could be retrieved, the number of bonds (or angles) that are observed in the model and the number of bonds (or angles) that are defined in the Chemical Component Dictionary. The Link column lists molecule types, if any, to which the group is linked. The Z score for a bond length (or angle) is the number of standard deviations the observed value is removed from the expected value. A bond length (or angle) with $|Z| > 2$ is considered an outlier worth inspection. RMSZ is the root-mean-square of all Z scores of the bond lengths (or angles).

Mol	Type	Chain	Res	Link	Bond lengths			Bond angles		
					Counts	RMSZ	$\# Z > 2$	Counts	RMSZ	$\# Z > 2$
4	GOL	A	703	-	5,5,5	0.09	0	5,5,5	0.22	0

Mol	Type	Chain	Res	Link	Bond lengths			Bond angles		
					Counts	RMSZ	# Z > 2	Counts	RMSZ	# Z > 2
2	WOF	A	701	-	36,42,42	2.47	8 (22%)	37,63,63	2.01	9 (24%)
4	GOL	A	704	-	5,5,5	0.09	0	5,5,5	0.22	0
3	WR8	A	702	-	24,29,29	2.60	6 (25%)	20,42,42	1.66	2 (10%)

In the following table, the Chirals column lists the number of chiral outliers, the number of chiral centers analysed, the number of these observed in the model and the number defined in the Chemical Component Dictionary. Similar counts are reported in the Torsion and Rings columns. '-' means no outliers of that kind were identified.

Mol	Type	Chain	Res	Link	Chirals	Torsions	Rings
4	GOL	A	703	-	-	1/4/4/4	-
2	WOF	A	701	-	-	5/14/51/51	0/6/6/6
4	GOL	A	704	-	-	2/4/4/4	-
3	WR8	A	702	-	-	5/6/21/21	0/5/5/5

All (14) bond length outliers are listed below:

Mol	Chain	Res	Type	Atoms	Z	Observed(Å)	Ideal(Å)
3	A	702	WR8	C03-N02	9.86	1.44	1.34
2	A	701	WOF	C03-N02	8.36	1.43	1.34
2	A	701	WOF	O20-C19	6.05	1.52	1.42
2	A	701	WOF	C17-N18	-5.86	1.35	1.47
3	A	702	WR8	C20-N15	5.16	1.54	1.46
2	A	701	WOF	C31-N18	-4.63	1.38	1.47
2	A	701	WOF	C14-N15	3.67	1.48	1.37
3	A	702	WR8	C16-C17	-3.46	1.43	1.51
2	A	701	WOF	C29-C27	-2.48	1.46	1.52
2	A	701	WOF	C08-C09	2.47	1.56	1.51
3	A	702	WR8	C14-N15	2.46	1.44	1.37
2	A	701	WOF	C21-C22	-2.35	1.48	1.53
3	A	702	WR8	C24-C10	-2.16	1.39	1.42
3	A	702	WR8	C08-C09	2.01	1.55	1.51

All (11) bond angle outliers are listed below:

Mol	Chain	Res	Type	Atoms	Z	Observed(°)	Ideal(°)
2	A	701	WOF	C01-N02-C03	-5.65	118.01	122.87
3	A	702	WR8	C01-N02-C03	-4.46	119.03	122.87
2	A	701	WOF	C31-C32-N15	4.31	119.07	110.70
3	A	702	WR8	C04-C03-N25	-4.27	118.77	122.77
2	A	701	WOF	C27-C29-C19	4.12	115.04	108.98

Continued on next page...

Continued from previous page...

Mol	Chain	Res	Type	Atoms	Z	Observed(°)	Ideal(°)
2	A	701	WOF	C17-C16-N15	3.44	117.39	110.70
2	A	701	WOF	C17-N18-C19	-3.42	107.10	115.09
2	A	701	WOF	C04-C09-C10	-2.85	116.59	118.99
2	A	701	WOF	C31-N18-C19	2.71	121.43	115.09
2	A	701	WOF	C16-N15-C14	-2.52	111.55	118.73
2	A	701	WOF	O20-C21-C25	2.38	113.82	109.57

There are no chirality outliers.

All (13) torsion outliers are listed below:

Mol	Chain	Res	Type	Atoms
2	A	701	WOF	C29-C19-N18-C17
2	A	701	WOF	C29-C19-N18-C31
2	A	701	WOF	O20-C19-N18-C31
2	A	701	WOF	N37-C03-N02-C01
3	A	702	WR8	C12-C14-N15-C16
3	A	702	WR8	C12-C14-N15-C20
3	A	702	WR8	N21-C14-N15-C20
3	A	702	WR8	N25-C03-N02-C01
4	A	704	GOL	O2-C2-C3-O3
4	A	703	GOL	O1-C1-C2-C3
4	A	704	GOL	C1-C2-C3-O3
3	A	702	WR8	C04-C03-N02-C01
2	A	701	WOF	O20-C19-N18-C17

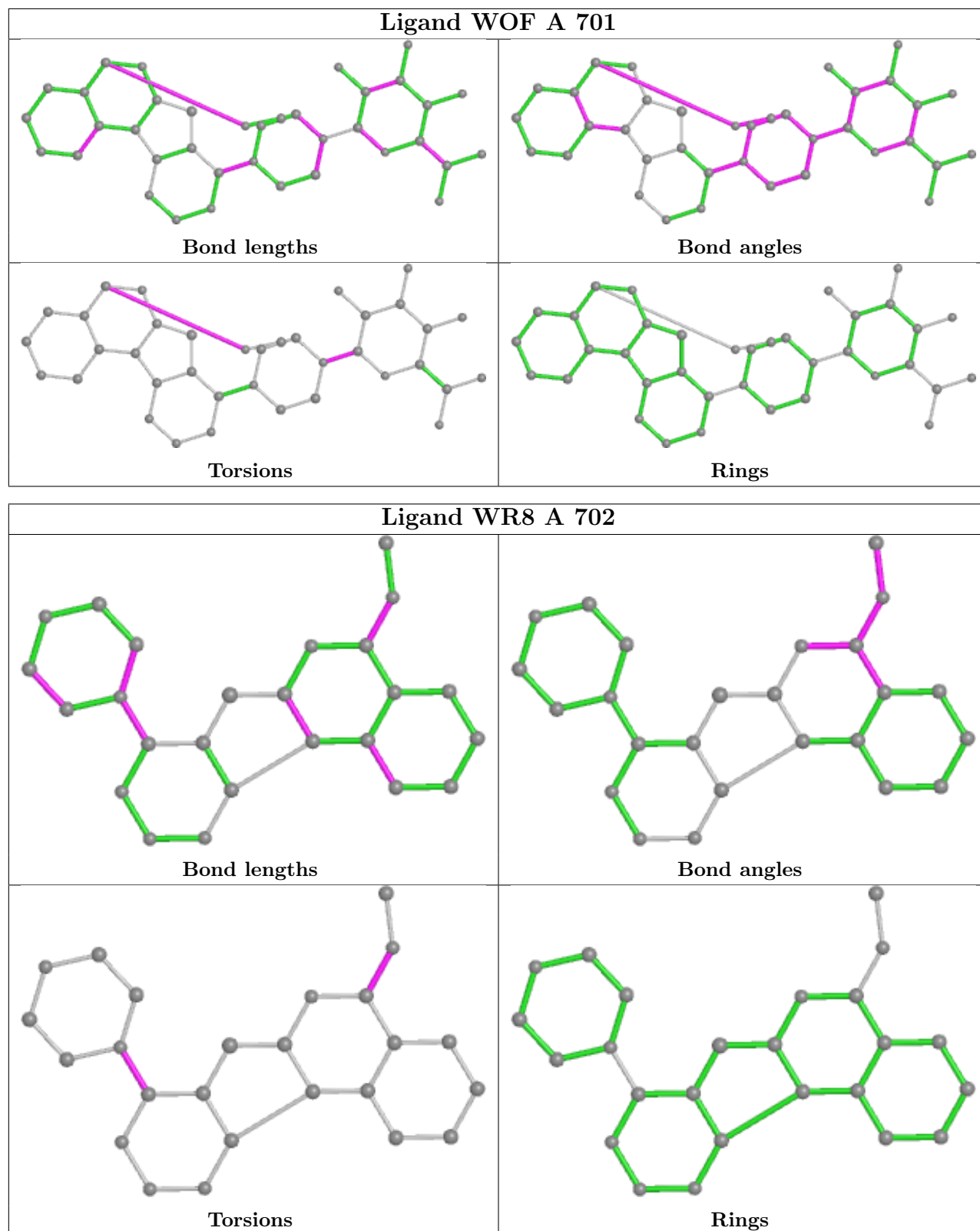
There are no ring outliers.

3 monomers are involved in 4 short contacts:

Mol	Chain	Res	Type	Clashes	Symm-Clashes
2	A	701	WOF	1	0
4	A	704	GOL	2	0
3	A	702	WR8	1	0

The following is a two-dimensional graphical depiction of Mogul quality analysis of bond lengths, bond angles, torsion angles, and ring geometry for all instances of the Ligand of Interest. In addition, ligands with molecular weight > 250 and outliers as shown on the validation Tables will also be included. For torsion angles, if less than 5% of the Mogul distribution of torsion angles is within 10 degrees of the torsion angle in question, then that torsion angle is considered an outlier. Any bond that is central to one or more torsion angles identified as an outlier by Mogul will be highlighted in the graph. For rings, the root-mean-square deviation (RMSD) between the ring in question and similar rings identified by Mogul is calculated over all ring torsion angles. If the average RMSD is greater than 60 degrees and the minimal RMSD between the ring in question and

any Mogul-identified rings is also greater than 60 degrees, then that ring is considered an outlier. The outliers are highlighted in purple. The color gray indicates Mogul did not find sufficient equivalents in the CSD to analyse the geometry.



5.7 Other polymers [i](#)

There are no such residues in this entry.

5.8 Polymer linkage issues [i](#)

There are no chain breaks in this entry.

6 Fit of model and data [i](#)

6.1 Protein, DNA and RNA chains [i](#)

In the following table, the column labelled ‘#RSRZ> 2’ contains the number (and percentage) of RSRZ outliers, followed by percent RSRZ outliers for the chain as percentile scores relative to all X-ray entries and entries of similar resolution. The OWAB column contains the minimum, median, 95th percentile and maximum values of the occupancy-weighted average B-factor per residue. The column labelled ‘Q< 0.9’ lists the number of (and percentage) of residues with an average occupancy less than 0.9.

Mol	Chain	Analysed	<RSRZ>	#RSRZ>2	OWAB(Å ²)	Q<0.9
1	A	580/614 (94%)	0.17	22 (3%) 40 36	30, 63, 106, 121	0

All (22) RSRZ outliers are listed below:

Mol	Chain	Res	Type	RSRZ
1	A	251	PHE	5.8
1	A	121	LEU	4.2
1	A	196	ILE	4.1
1	A	229	CYS	3.8
1	A	204	PHE	3.8
1	A	255	ASN	3.0
1	A	117	LEU	2.9
1	A	392	HIS	2.8
1	A	273	ALA	2.8
1	A	342	SER	2.7
1	A	244	THR	2.7
1	A	231	VAL	2.6
1	A	83	ILE	2.4
1	A	211	ALA	2.4
1	A	233	LEU	2.3
1	A	374	PHE	2.3
1	A	209	PRO	2.2
1	A	84	VAL	2.2
1	A	219	ILE	2.1
1	A	48	ALA	2.1
1	A	319	ILE	2.0
1	A	91	THR	2.0

6.2 Non-standard residues in protein, DNA, RNA chains [i](#)

There are no non-standard protein/DNA/RNA residues in this entry.

6.3 Carbohydrates [i](#)

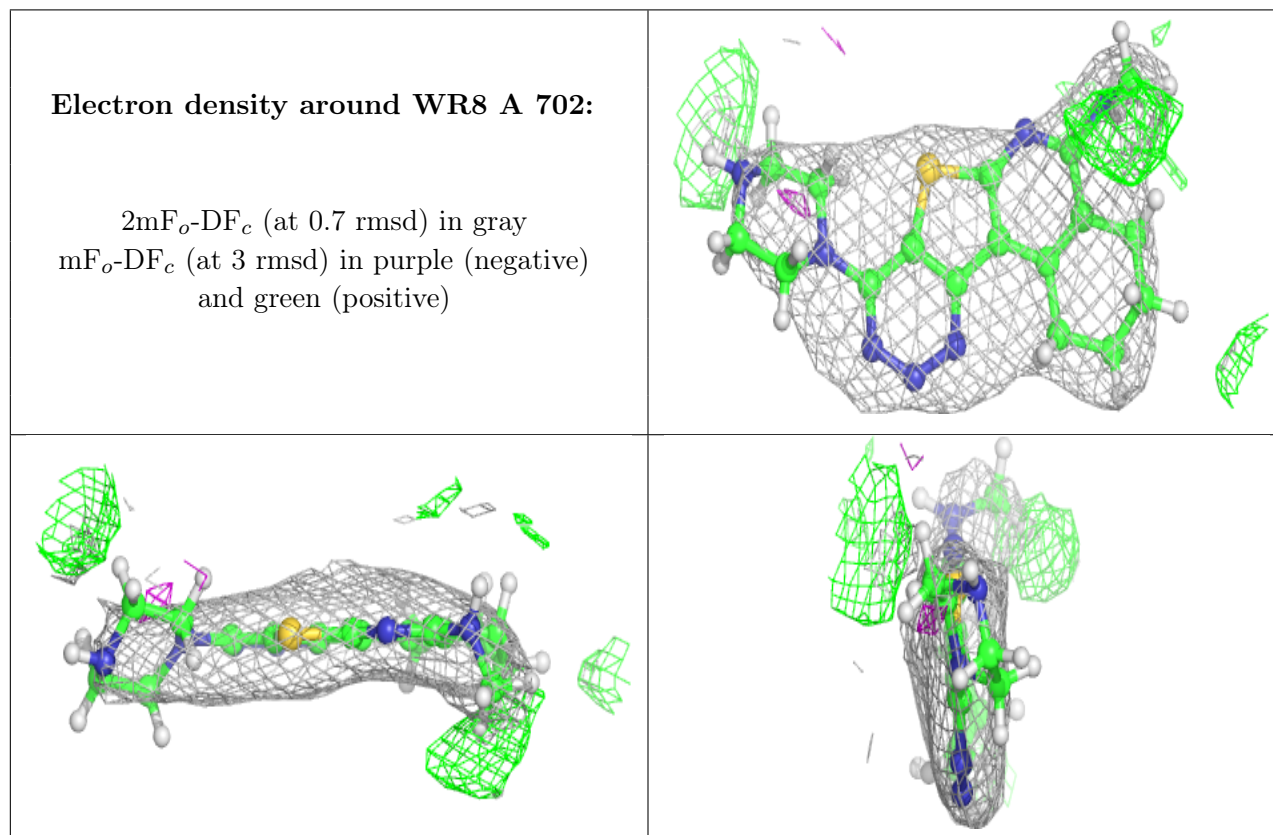
There are no monosaccharides in this entry.

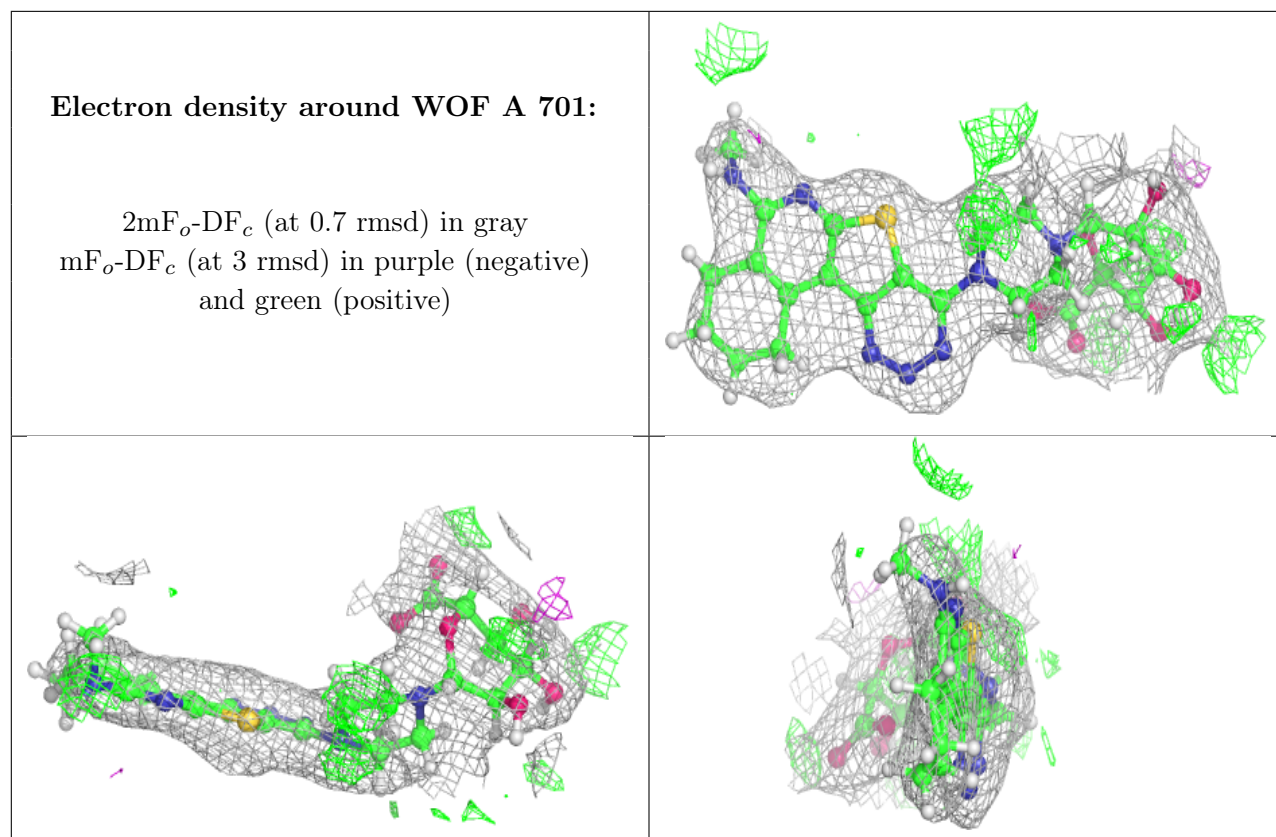
6.4 Ligands [i](#)

In the following table, the Atoms column lists the number of modelled atoms in the group and the number defined in the chemical component dictionary. The B-factors column lists the minimum, median, 95th percentile and maximum values of B factors of atoms in the group. The column labelled 'Q< 0.9' lists the number of atoms with occupancy less than 0.9.

Mol	Type	Chain	Res	Atoms	RSCC	RSR	B-factors(Å ²)	Q<0.9
3	WR8	A	702	25/25	0.85	0.22	60,72,88,94	46
2	WOF	A	701	37/37	0.86	0.20	41,53,63,69	65
4	GOL	A	704	6/6	0.90	0.32	20,20,20,20	0
4	GOL	A	703	6/6	0.92	0.34	20,20,20,20	0

The following is a graphical depiction of the model fit to experimental electron density of all instances of the Ligand of Interest. In addition, ligands with molecular weight > 250 and outliers as shown on the geometry validation Tables will also be included. Each fit is shown from different orientation to approximate a three-dimensional view.





6.5 Other polymers [i](#)

There are no such residues in this entry.