



Full wwPDB X-ray Structure Validation Report ⓘ

Aug 19, 2024 – 01:40 PM EDT

PDB ID : 8T7O
Title : Crystal structure of the R132H mutant of IDH1 bound to AG-120
Authors : Lu, J.; Abeywickrema, P.; Heo, M.R.; Parthasarathy, G.; McCoy, M.; Soisson, S.M.
Deposited on : 2023-06-20
Resolution : 2.05 Å(reported)

This is a Full wwPDB X-ray Structure Validation Report for a publicly released PDB entry.

We welcome your comments at validation@mail.wwpdb.org

A user guide is available at

<https://www.wwpdb.org/validation/2017/XrayValidationReportHelp>

with specific help available everywhere you see the ⓘ symbol.

The types of validation reports are described at

<http://www.wwpdb.org/validation/2017/FAQs#types>.

The following versions of software and data (see [references ⓘ](#)) were used in the production of this report:

MolProbity : 4.02b-467
Mogul : 1.8.5 (274361), CSD as541be (2020)
Xtrriage (Phenix) : 1.13
EDS : 2.37.1
buster-report : 1.1.7 (2018)
Percentile statistics : 20191225.v01 (using entries in the PDB archive December 25th 2019)
Refmac : 5.8.0158
CCP4 : 7.0.044 (Gargrove)
Ideal geometry (proteins) : Engh & Huber (2001)
Ideal geometry (DNA, RNA) : Parkinson et al. (1996)
Validation Pipeline (wwPDB-VP) : 2.37.1

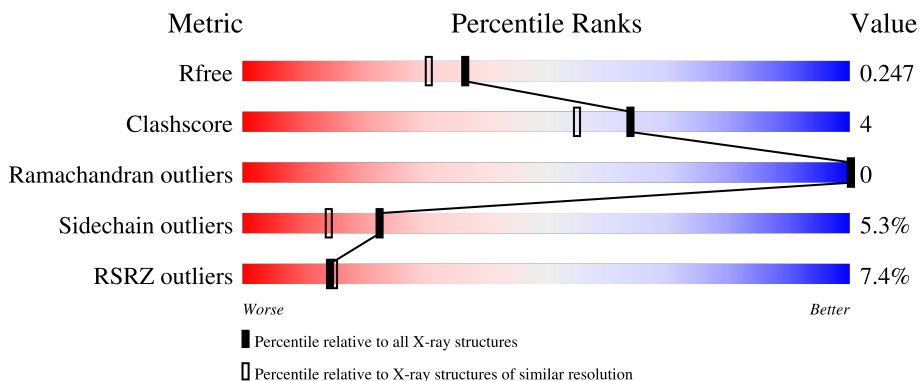
1 Overall quality at a glance

The following experimental techniques were used to determine the structure:

X-RAY DIFFRACTION



The reported resolution of this entry is 2.05 Å.

Percentile scores (ranging between 0-100) for global validation metrics of the entry are shown in the following graphic. The table shows the number of entries on which the scores are based.



Metric	Whole archive (#Entries)	Similar resolution (#Entries, resolution range(Å))
R_{free}	130704	2684 (2.08-2.04)
Clashscore	141614	2801 (2.08-2.04)
Ramachandran outliers	138981	2768 (2.08-2.04)
Sidechain outliers	138945	2768 (2.08-2.04)
RSRZ outliers	127900	2646 (2.08-2.04)

The table below summarises the geometric issues observed across the polymeric chains and their fit to the electron density. The red, orange, yellow and green segments of the lower bar indicate the fraction of residues that contain outliers for ≥ 3 , 2, 1 and 0 types of geometric quality criteria respectively. A grey segment represents the fraction of residues that are not modelled. The numeric value for each fraction is indicated below the corresponding segment, with a dot representing fractions $\leq 5\%$. The upper red bar (where present) indicates the fraction of residues that have poor fit to the electron density. The numeric value is given above the bar.

Mol	Chain	Length	Quality of chain
1	A	424	 7% 86% 9% . .
1	B	424	 7% 81% 11% . 8%

2 Entry composition [i](#)

There are 4 unique types of molecules in this entry. The entry contains 6636 atoms, of which 0 are hydrogens and 0 are deuteriums.

In the tables below, the ZeroOcc column contains the number of atoms modelled with zero occupancy, the AltConf column contains the number of residues with at least one atom in alternate conformation and the Trace column contains the number of residues modelled with at most 2 atoms.

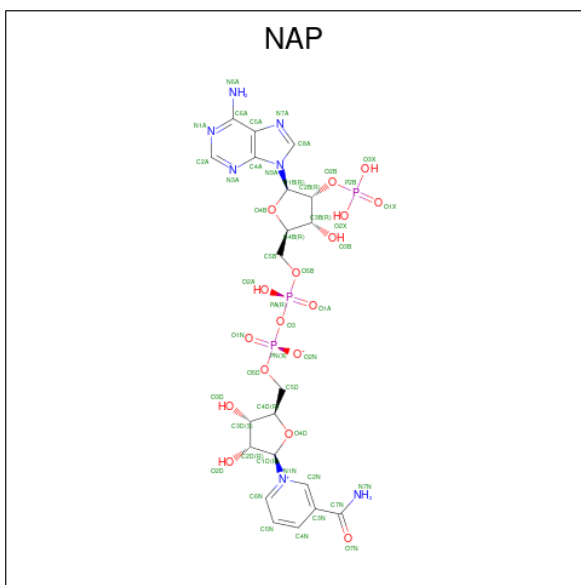
- Molecule 1 is a protein called Isocitrate dehydrogenase [NADP] cytoplasmic.

Mol	Chain	Residues	Atoms					ZeroOcc	AltConf	Trace
			Total	C	N	O	S			
1	A	407	3224	2052	547	607	18	0	0	0
1	B	392	3119	1988	531	582	18	0	0	0

There are 22 discrepancies between the modelled and reference sequences:

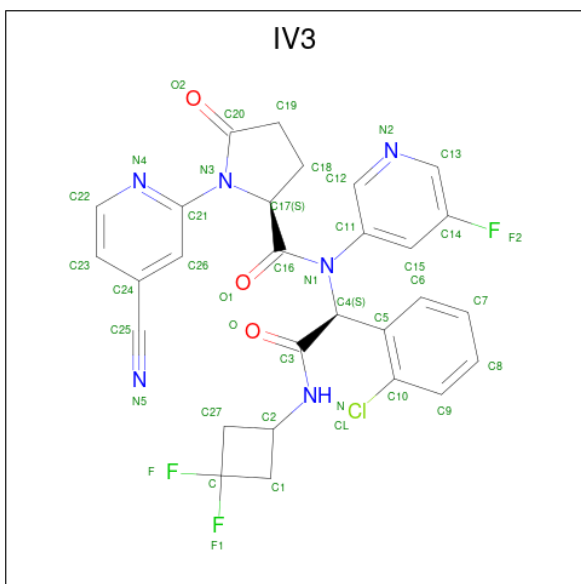
Chain	Residue	Modelled	Actual	Comment	Reference
A	132	HIS	ARG	variant	UNP O75874
A	415	LEU	-	expression tag	UNP O75874
A	416	GLU	-	expression tag	UNP O75874
A	417	HIS	-	expression tag	UNP O75874
A	418	HIS	-	expression tag	UNP O75874
A	419	HIS	-	expression tag	UNP O75874
A	420	HIS	-	expression tag	UNP O75874
A	421	HIS	-	expression tag	UNP O75874
A	422	HIS	-	expression tag	UNP O75874
A	423	HIS	-	expression tag	UNP O75874
A	424	HIS	-	expression tag	UNP O75874
B	132	HIS	ARG	variant	UNP O75874
B	415	LEU	-	expression tag	UNP O75874
B	416	GLU	-	expression tag	UNP O75874
B	417	HIS	-	expression tag	UNP O75874
B	418	HIS	-	expression tag	UNP O75874
B	419	HIS	-	expression tag	UNP O75874
B	420	HIS	-	expression tag	UNP O75874
B	421	HIS	-	expression tag	UNP O75874
B	422	HIS	-	expression tag	UNP O75874
B	423	HIS	-	expression tag	UNP O75874
B	424	HIS	-	expression tag	UNP O75874

- Molecule 2 is NADP NICOTINAMIDE-ADENINE-DINUCLEOTIDE PHOSPHATE (three-letter code: NAP) (formula: C₂₁H₂₈N₇O₁₇P₃).



Mol	Chain	Residues	Atoms					ZeroOcc	AltConf
			Total	C	N	O	P		
2	A	1	48	21	7	17	3	0	0
2	B	1	48	21	7	17	3	0	0

- Molecule 3 is ivosidenib (three-letter code: IV3) (formula: $C_{28}H_{22}ClF_3N_6O_3$) (labeled as "Ligand of Interest" by depositor).



Mol	Chain	Residues	Atoms					ZeroOcc	AltConf	
			Total	C	Cl	F	N			O
3	A	1	41	28	1	3	6	3	0	0

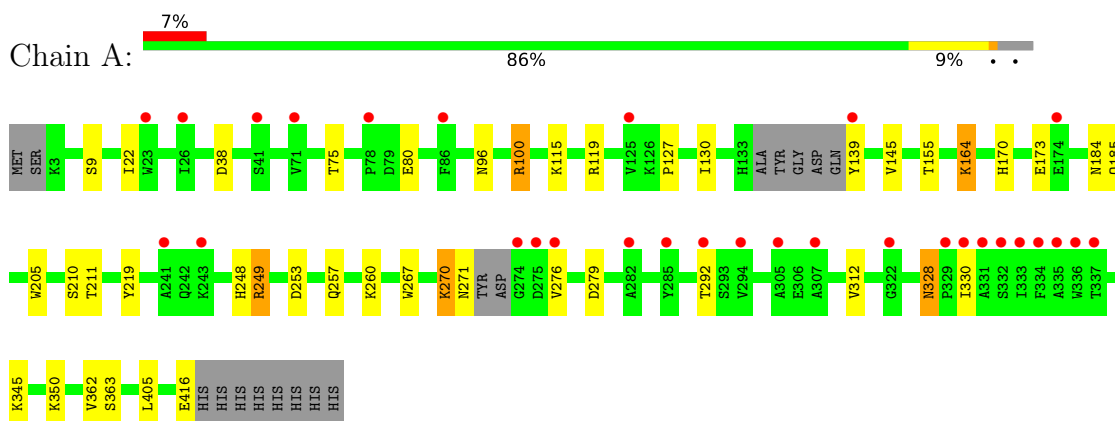
- Molecule 4 is water.

Mol	Chain	Residues	Atoms		ZeroOcc	AltConf
4	A	85	Total 85	O 85	0	0
4	B	71	Total 71	O 71	0	0

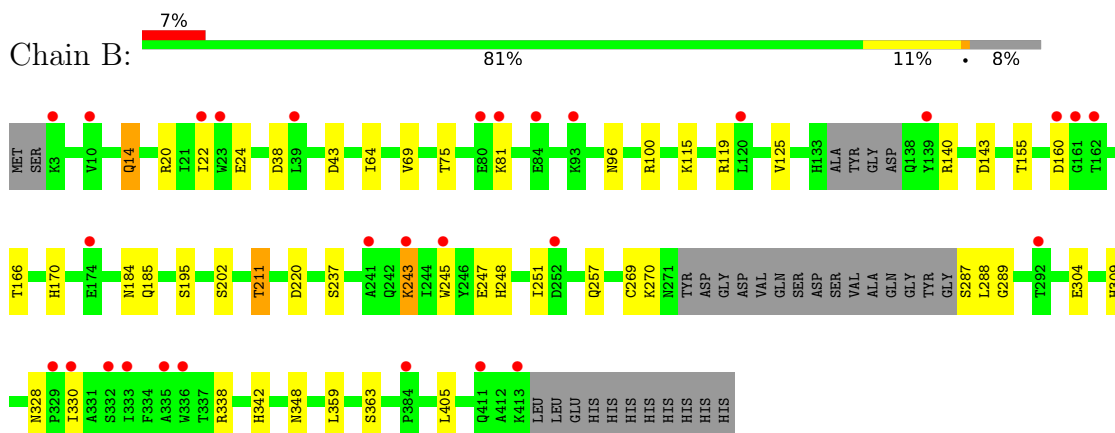
3 Residue-property plots [i](#)

These plots are drawn for all protein, RNA, DNA and oligosaccharide chains in the entry. The first graphic for a chain summarises the proportions of the various outlier classes displayed in the second graphic. The second graphic shows the sequence view annotated by issues in geometry and electron density. Residues are color-coded according to the number of geometric quality criteria for which they contain at least one outlier: green = 0, yellow = 1, orange = 2 and red = 3 or more. A red dot above a residue indicates a poor fit to the electron density ($RSRZ > 2$). Stretches of 2 or more consecutive residues without any outlier are shown as a green connector. Residues present in the sample, but not in the model, are shown in grey.

- Molecule 1: Isocitrate dehydrogenase [NADP] cytoplasmic



- Molecule 1: Isocitrate dehydrogenase [NADP] cytoplasmic



4 Data and refinement statistics

Property	Value	Source
Space group	P 43 21 2	Depositor
Cell constants a, b, c, α , β , γ	79.44Å 79.44Å 305.31Å 90.00° 90.00° 90.00°	Depositor
Resolution (Å)	29.37 – 2.05 29.37 – 2.05	Depositor EDS
% Data completeness (in resolution range)	84.2 (29.37-2.05) 84.2 (29.37-2.05)	Depositor EDS
R_{merge}	(Not available)	Depositor
R_{sym}	(Not available)	Depositor
$\langle I/\sigma(I) \rangle$ ¹	1.51 (at 2.04Å)	Xtrriage
Refinement program	BUSTER 2.11.8	Depositor
R, R_{free}	0.224 , 0.255 0.216 , 0.247	Depositor DCC
R_{free} test set	2666 reflections (5.07%)	wwPDB-VP
Wilson B-factor (Å ²)	47.2	Xtrriage
Anisotropy	0.036	Xtrriage
Bulk solvent k_{sol} (e/Å ³), B_{sol} (Å ²)	0.35 , 44.4	EDS
L-test for twinning ²	$\langle L \rangle = 0.47$, $\langle L^2 \rangle = 0.30$	Xtrriage
Estimated twinning fraction	No twinning to report.	Xtrriage
F_o, F_c correlation	0.95	EDS
Total number of atoms	6636	wwPDB-VP
Average B, all atoms (Å ²)	51.0	wwPDB-VP

Xtrriage's analysis on translational NCS is as follows: *The largest off-origin peak in the Patterson function is 3.90% of the height of the origin peak. No significant pseudotranslation is detected.*

¹Intensities estimated from amplitudes.

²Theoretical values of $\langle |L| \rangle$, $\langle L^2 \rangle$ for acentric reflections are 0.5, 0.333 respectively for untwinned datasets, and 0.375, 0.2 for perfectly twinned datasets.

5 Model quality [i](#)

5.1 Standard geometry [i](#)

Bond lengths and bond angles in the following residue types are not validated in this section: IV3, NAP

The Z score for a bond length (or angle) is the number of standard deviations the observed value is removed from the expected value. A bond length (or angle) with $|Z| > 5$ is considered an outlier worth inspection. RMSZ is the root-mean-square of all Z scores of the bond lengths (or angles).

Mol	Chain	Bond lengths		Bond angles	
		RMSZ	# $ Z > 5$	RMSZ	# $ Z > 5$
1	A	0.41	0/3289	0.64	1/4431 (0.0%)
1	B	0.42	0/3183	0.61	1/4287 (0.0%)
All	All	0.41	0/6472	0.63	2/8718 (0.0%)

There are no bond length outliers.

All (2) bond angle outliers are listed below:

Mol	Chain	Res	Type	Atoms	Z	Observed(°)	Ideal(°)
1	B	38	ASP	N-CA-C	-5.29	96.72	111.00
1	A	38	ASP	N-CA-C	-5.03	97.43	111.00

There are no chirality outliers.

There are no planarity outliers.

5.2 Too-close contacts [i](#)

In the following table, the Non-H and H(model) columns list the number of non-hydrogen atoms and hydrogen atoms in the chain respectively. The H(added) column lists the number of hydrogen atoms added and optimized by MolProbity. The Clashes column lists the number of clashes within the asymmetric unit, whereas Symm-Clashes lists symmetry-related clashes.

Mol	Chain	Non-H	H(model)	H(added)	Clashes	Symm-Clashes
1	A	3224	0	3206	24	0
1	B	3119	0	3111	34	0
2	A	48	0	25	1	0
2	B	48	0	25	6	0
3	A	41	0	0	4	0
4	A	85	0	0	0	0
4	B	71	0	0	0	0

Continued on next page...

Continued from previous page...

Mol	Chain	Non-H	H(model)	H(added)	Clashes	Symm-Clashes
All	All	6636	0	6367	54	0

The all-atom clashscore is defined as the number of clashes found per 1000 atoms (including hydrogen atoms). The all-atom clashscore for this structure is 4.

All (54) close contacts within the same asymmetric unit are listed below, sorted by their clash magnitude.

Atom-1	Atom-2	Interatomic distance (Å)	Clash overlap (Å)
1:A:328:ASN:HD21	1:A:330:ILE:HG12	1.44	0.81
1:B:211:THR:CG2	1:B:248:HIS:HE1	1.97	0.77
1:B:211:THR:HG22	1:B:248:HIS:HE1	1.51	0.74
1:A:276:VAL:HG22	1:B:251:ILE:HD11	1.70	0.73
1:A:253:ASP:O	1:A:257:GLN:HG2	1.87	0.73
1:B:75:THR:O	2:B:500:NAP:H2N	1.91	0.71
1:A:170:HIS:ND1	1:B:140:ARG:NH2	2.37	0.70
1:A:170:HIS:HE2	1:B:185:GLN:NE2	1.90	0.69
1:A:75:THR:O	2:A:501:NAP:H2N	1.98	0.64
1:B:211:THR:HG22	1:B:248:HIS:CE1	2.33	0.61
1:A:127:PRO:HD2	1:A:205:TRP:HH2	1.67	0.59
1:B:328:ASN:OD1	1:B:330:ILE:HG12	2.04	0.58
1:B:243:LYS:HA	1:B:243:LYS:NZ	2.19	0.57
1:B:211:THR:CG2	1:B:248:HIS:CE1	2.86	0.57
1:A:328:ASN:ND2	1:A:330:ILE:HG12	2.19	0.56
1:A:211:THR:OG1	1:A:248:HIS:HE1	1.88	0.56
1:B:20:ARG:NH2	1:B:43:ASP:OD1	2.37	0.56
1:A:127:PRO:HD2	1:A:205:TRP:CH2	2.42	0.54
1:B:155:THR:HG22	1:B:166:THR:HG23	1.89	0.54
1:B:289:GLY:HA2	1:B:309:HIS:CD2	2.42	0.54
1:B:288:LEU:HD23	2:B:500:NAP:H8A	1.90	0.54
1:B:359:LEU:HD13	1:B:405:LEU:HD22	1.88	0.54
1:A:155:THR:HG21	1:A:164:LYS:HE3	1.89	0.53
1:B:243:LYS:HA	1:B:243:LYS:HZ2	1.74	0.52
1:A:270:LYS:O	1:A:270:LYS:HG3	2.10	0.50
1:B:115:LYS:HE3	1:B:125:VAL:HG13	1.94	0.49
3:A:502:IV3:C25	1:B:269:CYS:SG	3.01	0.49
1:B:330:ILE:HD12	1:B:363:SER:HB3	1.95	0.48
1:B:211:THR:HB	1:B:248:HIS:HE1	1.78	0.48
1:A:260:LYS:NZ	2:B:500:NAP:H51A	2.28	0.48
1:B:211:THR:CB	1:B:248:HIS:HE1	2.26	0.48
1:B:64:ILE:HD13	1:B:304:GLU:HG3	1.95	0.47
1:A:362:VAL:HG21	1:A:405:LEU:HA	1.96	0.47

Continued on next page...

Continued from previous page...

Atom-1	Atom-2	Interatomic distance (Å)	Clash overlap (Å)
2:B:500:NAP:H8A	2:B:500:NAP:O5B	2.15	0.47
1:B:69:VAL:HG22	1:B:342:HIS:HD2	1.79	0.47
3:A:502:IV3:C23	1:B:269:CYS:SG	3.03	0.47
1:B:14:GLN:NE2	1:B:24:GLU:HG2	2.30	0.46
1:B:211:THR:HB	1:B:248:HIS:CE1	2.50	0.46
1:A:170:HIS:HE2	1:B:185:GLN:HE21	1.60	0.45
1:A:210:SER:HA	1:A:249:ARG:O	2.17	0.44
1:A:276:VAL:HG21	3:A:502:IV3:C25	2.47	0.44
1:B:211:THR:HG23	1:B:220:ASP:HB3	1.99	0.44
1:A:330:ILE:HD12	1:A:363:SER:HB3	2.01	0.43
2:B:500:NAP:H6N	2:B:500:NAP:H2D	1.86	0.42
1:A:219:TYR:HB2	1:B:143:ASP:HB2	2.00	0.42
3:A:502:IV3:N5	1:B:269:CYS:HB3	2.34	0.42
1:A:185:GLN:NE2	1:B:170:HIS:NE2	2.68	0.42
1:B:14:GLN:HE22	1:B:24:GLU:HG2	1.85	0.41
1:A:130:ILE:HG22	1:A:267:TRP:HB3	2.02	0.41
1:A:260:LYS:HZ1	2:B:500:NAP:H51A	1.84	0.41
1:B:96:ASN:O	1:B:100:ARG:HB2	2.20	0.41
1:A:96:ASN:O	1:A:100:ARG:HD2	2.21	0.41
1:A:270:LYS:O	1:A:271:ASN:HB2	2.21	0.40
1:B:245:TRP:HD1	1:B:247:GLU:HG3	1.86	0.40

There are no symmetry-related clashes.

5.3 Torsion angles [i](#)

5.3.1 Protein backbone [i](#)

In the following table, the Percentiles column shows the percent Ramachandran outliers of the chain as a percentile score with respect to all X-ray entries followed by that with respect to entries of similar resolution.

The Analysed column shows the number of residues for which the backbone conformation was analysed, and the total number of residues.

Mol	Chain	Analysed	Favoured	Allowed	Outliers	Percentiles	
1	A	401/424 (95%)	387 (96%)	14 (4%)	0	100	100
1	B	386/424 (91%)	376 (97%)	10 (3%)	0	100	100
All	All	787/848 (93%)	763 (97%)	24 (3%)	0	100	100

There are no Ramachandran outliers to report.

5.3.2 Protein sidechains [i](#)

In the following table, the Percentiles column shows the percent sidechain outliers of the chain as a percentile score with respect to all X-ray entries followed by that with respect to entries of similar resolution.

The Analysed column shows the number of residues for which the sidechain conformation was analysed, and the total number of residues.

Mol	Chain	Analysed	Rotameric	Outliers	Percentiles	
1	A	345/360 (96%)	325 (94%)	20 (6%)	20	11
1	B	334/360 (93%)	318 (95%)	16 (5%)	25	18
All	All	679/720 (94%)	643 (95%)	36 (5%)	22	14

All (36) residues with a non-rotameric sidechain are listed below:

Mol	Chain	Res	Type
1	A	9	SER
1	A	22	ILE
1	A	80	GLU
1	A	100	ARG
1	A	115	LYS
1	A	119	ARG
1	A	139	TYR
1	A	145	VAL
1	A	164	LYS
1	A	173	GLU
1	A	184	ASN
1	A	249	ARG
1	A	270	LYS
1	A	279	ASP
1	A	292	THR
1	A	312	VAL
1	A	328	ASN
1	A	345	LYS
1	A	350	LYS
1	A	416	GLU
1	B	14	GLN
1	B	22	ILE
1	B	81	LYS
1	B	119	ARG
1	B	160	ASP

Continued on next page...

Continued from previous page...

Mol	Chain	Res	Type
1	B	184	ASN
1	B	195	SER
1	B	202	SER
1	B	211	THR
1	B	237	SER
1	B	243	LYS
1	B	257	GLN
1	B	270	LYS
1	B	287	SER
1	B	338	ARG
1	B	348	ASN

Sometimes sidechains can be flipped to improve hydrogen bonding and reduce clashes. All (10) such sidechains are listed below:

Mol	Chain	Res	Type
1	A	68	ASN
1	A	90	GLN
1	A	133	HIS
1	A	185	GLN
1	A	198	GLN
1	A	248	HIS
1	A	328	ASN
1	B	185	GLN
1	B	248	HIS
1	B	404	ASN

5.3.3 RNA [i](#)

There are no RNA molecules in this entry.

5.4 Non-standard residues in protein, DNA, RNA chains [i](#)

There are no non-standard protein/DNA/RNA residues in this entry.

5.5 Carbohydrates [i](#)

There are no monosaccharides in this entry.

5.6 Ligand geometry

3 ligands are modelled in this entry.

In the following table, the Counts columns list the number of bonds (or angles) for which Mogul statistics could be retrieved, the number of bonds (or angles) that are observed in the model and the number of bonds (or angles) that are defined in the Chemical Component Dictionary. The Link column lists molecule types, if any, to which the group is linked. The Z score for a bond length (or angle) is the number of standard deviations the observed value is removed from the expected value. A bond length (or angle) with $|Z| > 2$ is considered an outlier worth inspection. RMSZ is the root-mean-square of all Z scores of the bond lengths (or angles).

Mol	Type	Chain	Res	Link	Bond lengths			Bond angles		
					Counts	RMSZ	# Z > 2	Counts	RMSZ	# Z > 2
2	NAP	B	500	-	45,52,52	1.55	5 (11%)	56,80,80	1.57	6 (10%)
2	NAP	A	501	-	45,52,52	1.61	5 (11%)	56,80,80	1.45	7 (12%)
3	IV3	A	502	-	41,45,45	0.33	0	56,66,66	0.64	1 (1%)

In the following table, the Chirals column lists the number of chiral outliers, the number of chiral centers analysed, the number of these observed in the model and the number defined in the Chemical Component Dictionary. Similar counts are reported in the Torsion and Rings columns. '-' means no outliers of that kind were identified.

Mol	Type	Chain	Res	Link	Chirals	Torsions	Rings
2	NAP	B	500	-	-	8/31/67/67	0/5/5/5
2	NAP	A	501	-	-	10/31/67/67	0/5/5/5
3	IV3	A	502	-	-	2/34/57/57	0/5/5/5

All (10) bond length outliers are listed below:

Mol	Chain	Res	Type	Atoms	Z	Observed(Å)	Ideal(Å)
2	A	501	NAP	C4N-C3N	7.14	1.51	1.39
2	B	500	NAP	C4N-C3N	6.92	1.51	1.39
2	A	501	NAP	C5N-C4N	5.30	1.50	1.38
2	B	500	NAP	C5N-C4N	5.19	1.49	1.38
2	A	501	NAP	C2N-N1N	3.23	1.38	1.35
2	B	500	NAP	C6N-C5N	-2.76	1.32	1.38
2	A	501	NAP	C6N-C5N	-2.70	1.32	1.38
2	B	500	NAP	C2N-C3N	-2.44	1.35	1.39
2	A	501	NAP	C2N-C3N	-2.39	1.35	1.39
2	B	500	NAP	C2N-N1N	2.34	1.37	1.35

All (14) bond angle outliers are listed below:

Mol	Chain	Res	Type	Atoms	Z	Observed(°)	Ideal(°)
2	B	500	NAP	C5N-C4N-C3N	-8.43	110.37	120.34
2	A	501	NAP	C5N-C4N-C3N	-7.36	111.63	120.34
2	B	500	NAP	C6N-N1N-C2N	-3.74	118.57	121.97
2	A	501	NAP	C6N-N1N-C2N	-3.38	118.89	121.97
2	B	500	NAP	C2N-C3N-C4N	3.08	121.75	118.26
3	A	502	IV3	C5-C4-N1	2.97	114.71	111.92
2	B	500	NAP	C6N-C5N-C4N	2.84	123.56	119.44
2	B	500	NAP	C3N-C2N-N1N	2.63	123.00	120.43
2	A	501	NAP	C3N-C2N-N1N	2.47	122.84	120.43
2	B	500	NAP	C5A-C6A-N6A	2.27	123.81	120.35
2	A	501	NAP	C2N-C3N-C4N	2.22	120.77	118.26
2	A	501	NAP	C6N-C5N-C4N	2.14	122.55	119.44
2	A	501	NAP	C5A-C6A-N6A	2.07	123.50	120.35
2	A	501	NAP	O3B-C3B-C2B	2.00	116.85	111.17

There are no chirality outliers.

All (20) torsion outliers are listed below:

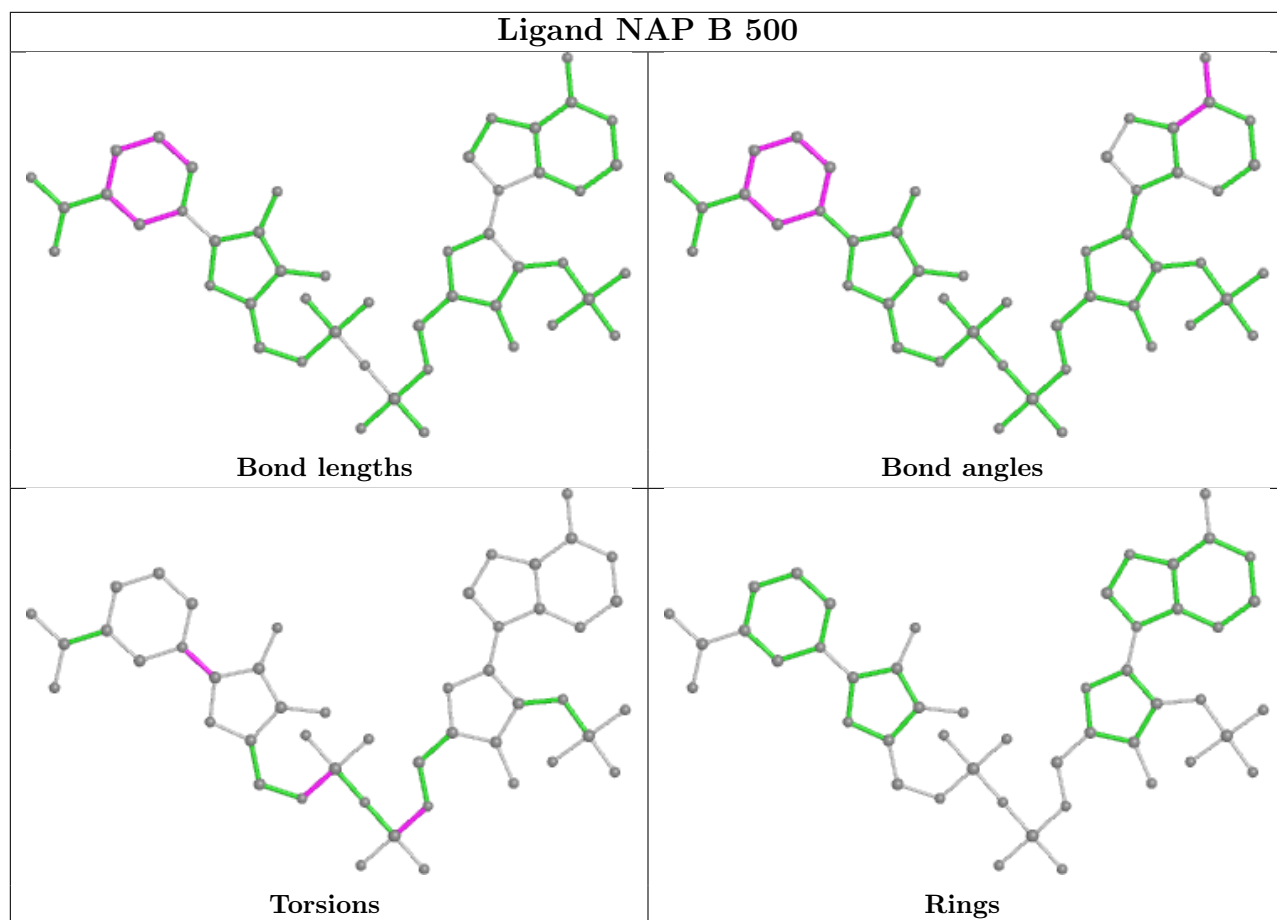
Mol	Chain	Res	Type	Atoms
2	A	501	NAP	C5D-O5D-PN-O1N
2	A	501	NAP	C5D-O5D-PN-O2N
2	A	501	NAP	O4D-C1D-N1N-C2N
2	A	501	NAP	O4D-C1D-N1N-C6N
2	A	501	NAP	C2D-C1D-N1N-C2N
2	B	500	NAP	C5D-O5D-PN-O1N
2	B	500	NAP	C5D-O5D-PN-O2N
2	B	500	NAP	O4D-C1D-N1N-C2N
2	B	500	NAP	O4D-C1D-N1N-C6N
2	B	500	NAP	C2D-C1D-N1N-C2N
2	B	500	NAP	C2D-C1D-N1N-C6N
3	A	502	IV3	O1-C16-N1-C4
2	A	501	NAP	C5D-O5D-PN-O3
2	B	500	NAP	C5D-O5D-PN-O3
2	A	501	NAP	C1B-C2B-O2B-P2B
3	A	502	IV3	C17-C16-N1-C4
2	A	501	NAP	C2D-C1D-N1N-C6N
2	A	501	NAP	C5B-O5B-PA-O1A
2	B	500	NAP	C5B-O5B-PA-O1A
2	A	501	NAP	C3B-C2B-O2B-P2B

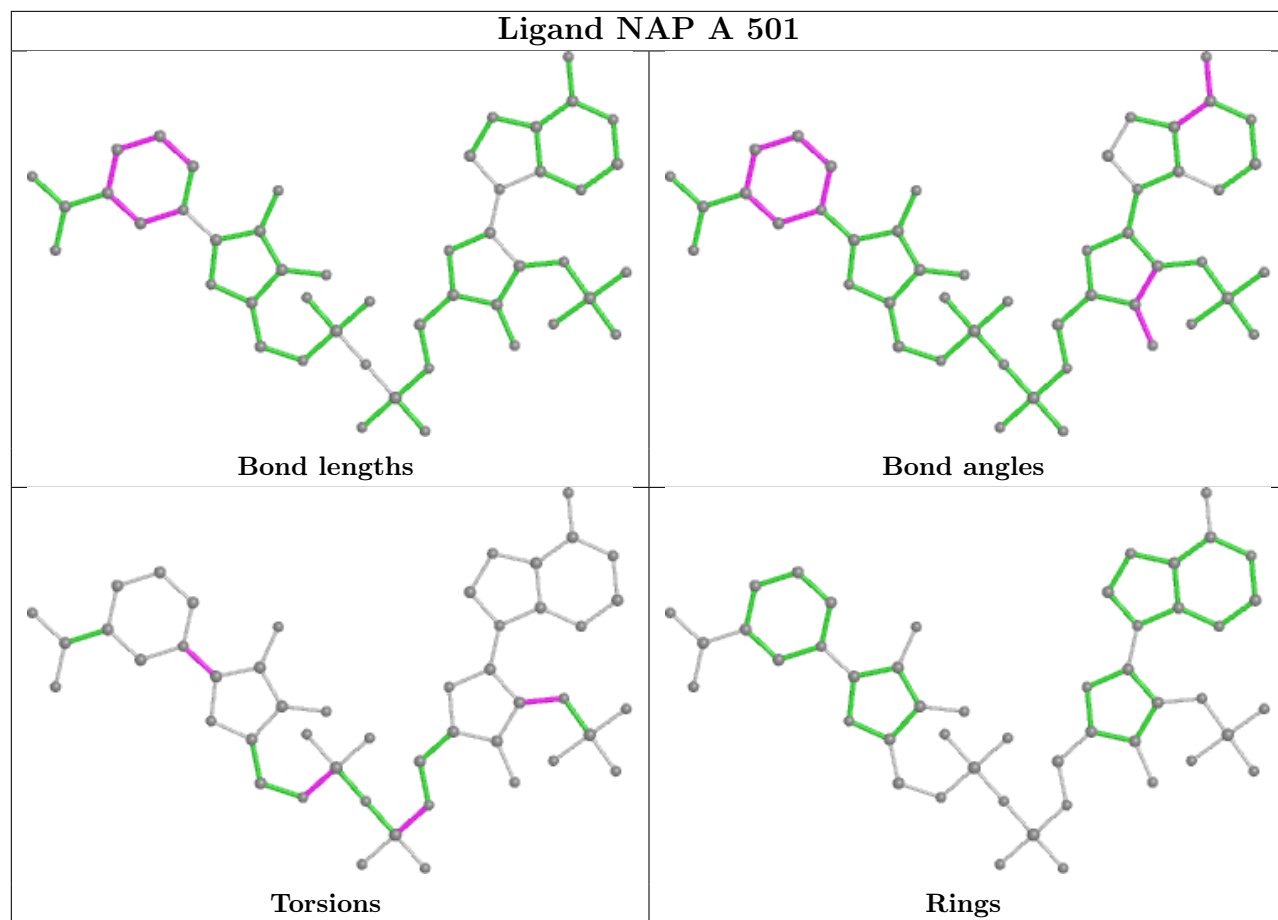
There are no ring outliers.

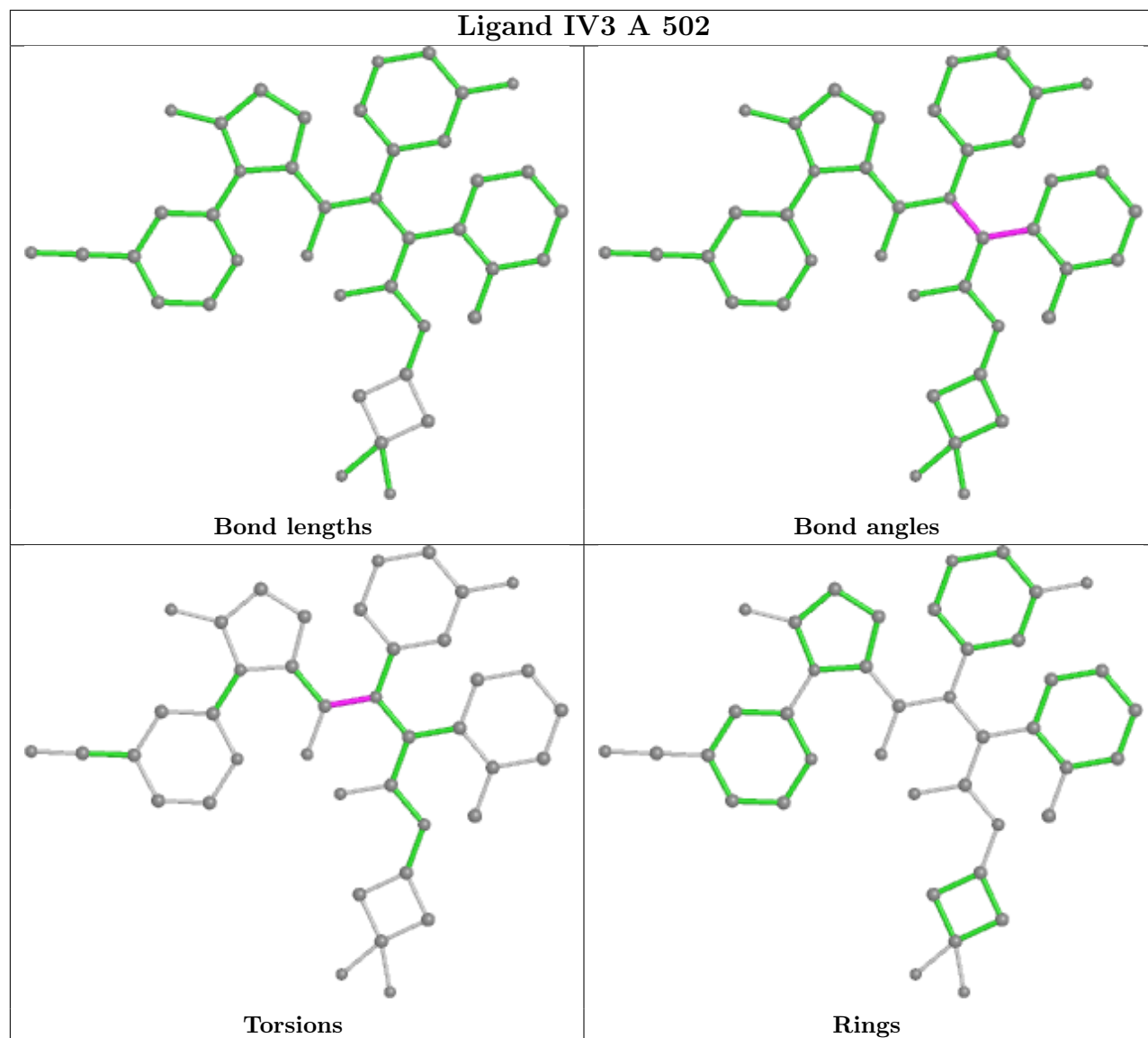
3 monomers are involved in 11 short contacts:

Mol	Chain	Res	Type	Clashes	Symm-Clashes
2	B	500	NAP	6	0
2	A	501	NAP	1	0
3	A	502	IV3	4	0

The following is a two-dimensional graphical depiction of Mogul quality analysis of bond lengths, bond angles, torsion angles, and ring geometry for all instances of the Ligand of Interest. In addition, ligands with molecular weight > 250 and outliers as shown on the validation Tables will also be included. For torsion angles, if less than 5% of the Mogul distribution of torsion angles is within 10 degrees of the torsion angle in question, then that torsion angle is considered an outlier. Any bond that is central to one or more torsion angles identified as an outlier by Mogul will be highlighted in the graph. For rings, the root-mean-square deviation (RMSD) between the ring in question and similar rings identified by Mogul is calculated over all ring torsion angles. If the average RMSD is greater than 60 degrees and the minimal RMSD between the ring in question and any Mogul-identified rings is also greater than 60 degrees, then that ring is considered an outlier. The outliers are highlighted in purple. The color gray indicates Mogul did not find sufficient equivalents in the CSD to analyse the geometry.







5.7 Other polymers [i](#)

There are no such residues in this entry.

5.8 Polymer linkage issues [i](#)

There are no chain breaks in this entry.

6 Fit of model and data

6.1 Protein, DNA and RNA chains

In the following table, the column labelled ‘#RSRZ > 2’ contains the number (and percentage) of RSRZ outliers, followed by percent RSRZ outliers for the chain as percentile scores relative to all X-ray entries and entries of similar resolution. The OWAB column contains the minimum, median, 95th percentile and maximum values of the occupancy-weighted average B-factor per residue. The column labelled ‘Q < 0.9’ lists the number of (and percentage) of residues with an average occupancy less than 0.9.

Mol	Chain	Analysed	<RSRZ>	#RSRZ>2	OWAB(Å ²)	Q<0.9
1	A	407/424 (95%)	0.48	30 (7%) 14 15	35, 48, 73, 97	0
1	B	392/424 (92%)	0.40	29 (7%) 14 15	33, 48, 71, 87	0
All	All	799/848 (94%)	0.44	59 (7%) 14 15	33, 48, 71, 97	0

All (59) RSRZ outliers are listed below:

Mol	Chain	Res	Type	RSRZ
1	B	161	GLY	7.2
1	B	139	TYR	6.8
1	A	139	TYR	5.8
1	B	162	THR	5.0
1	A	78	PRO	3.9
1	A	333	ILE	3.8
1	A	26	ILE	3.7
1	A	23	TRP	3.6
1	A	71	VAL	3.4
1	A	274	GLY	3.4
1	A	285	TYR	3.3
1	A	336	TRP	3.2
1	B	292	THR	3.0
1	A	332	SER	2.9
1	A	335	ALA	2.9
1	A	275	ASP	2.9
1	B	22	ILE	2.8
1	B	411	GLN	2.8
1	B	84	GLU	2.8
1	A	86	PHE	2.8
1	A	276	VAL	2.7
1	B	413	LYS	2.7
1	B	335	ALA	2.7
1	A	337	THR	2.7

Continued on next page...

Continued from previous page...

Mol	Chain	Res	Type	RSRZ
1	B	384	PRO	2.7
1	A	329	PRO	2.6
1	A	334	PHE	2.5
1	A	305	ALA	2.5
1	B	329	PRO	2.5
1	B	241	ALA	2.5
1	B	336	TRP	2.4
1	B	93	LYS	2.4
1	B	23	TRP	2.4
1	B	160	ASP	2.4
1	B	120	LEU	2.3
1	B	81	LYS	2.3
1	A	243	LYS	2.3
1	A	282	ALA	2.2
1	A	292	THR	2.2
1	B	10	VAL	2.2
1	B	333	ILE	2.2
1	A	241	ALA	2.2
1	B	174	GLU	2.2
1	A	330	ILE	2.2
1	B	332	SER	2.2
1	B	3	LYS	2.2
1	B	243	LYS	2.1
1	A	125	VAL	2.1
1	A	331	ALA	2.1
1	B	80	GLU	2.1
1	A	307	ALA	2.1
1	B	252	ASP	2.1
1	A	322	GLY	2.1
1	A	174	GLU	2.1
1	A	294	VAL	2.1
1	B	245	TRP	2.0
1	A	41	SER	2.0
1	B	39	LEU	2.0
1	B	330	ILE	2.0

6.2 Non-standard residues in protein, DNA, RNA chains

There are no non-standard protein/DNA/RNA residues in this entry.

6.3 Carbohydrates [i](#)

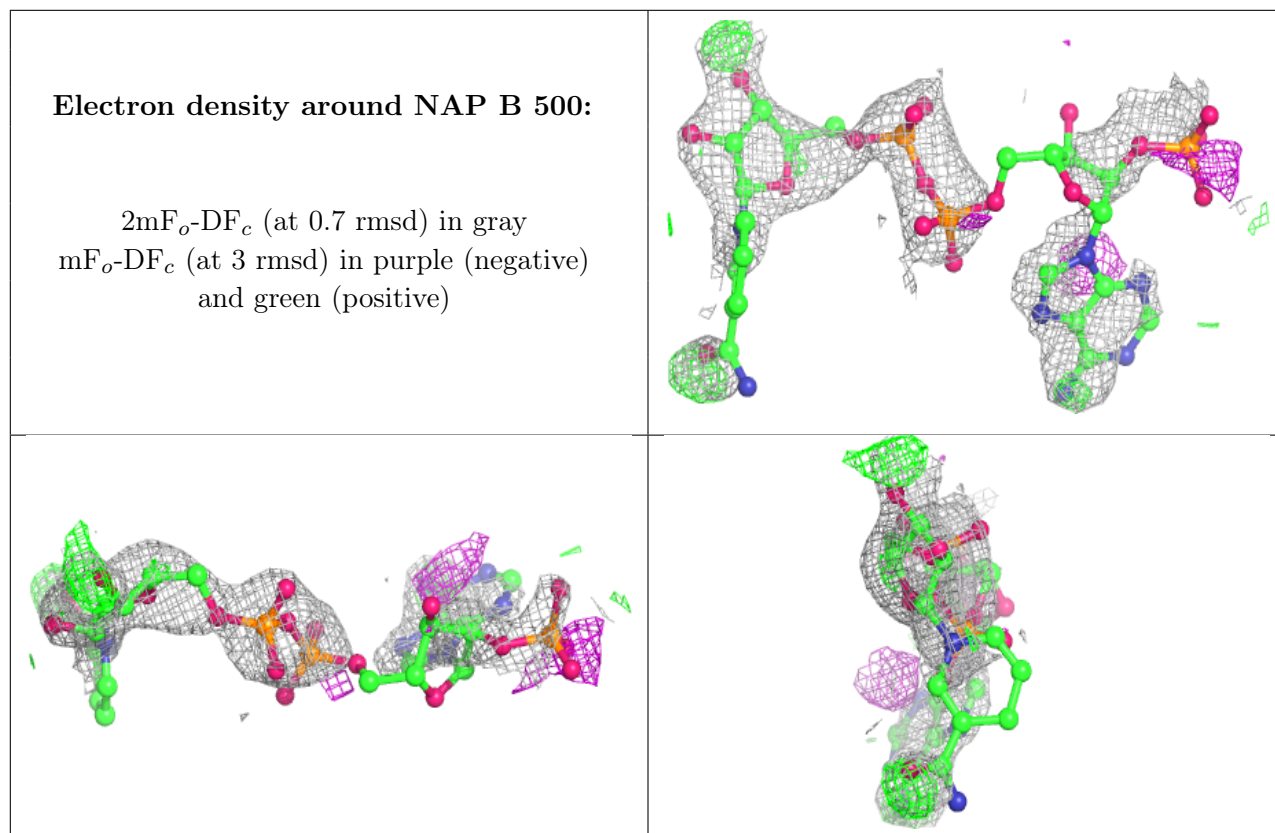
There are no monosaccharides in this entry.

6.4 Ligands [i](#)

In the following table, the Atoms column lists the number of modelled atoms in the group and the number defined in the chemical component dictionary. The B-factors column lists the minimum, median, 95th percentile and maximum values of B factors of atoms in the group. The column labelled 'Q< 0.9' lists the number of atoms with occupancy less than 0.9.

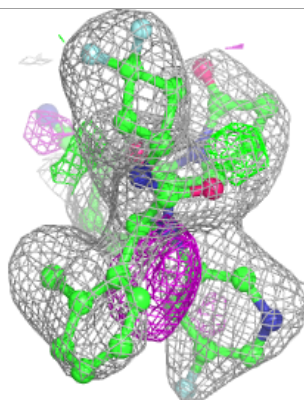
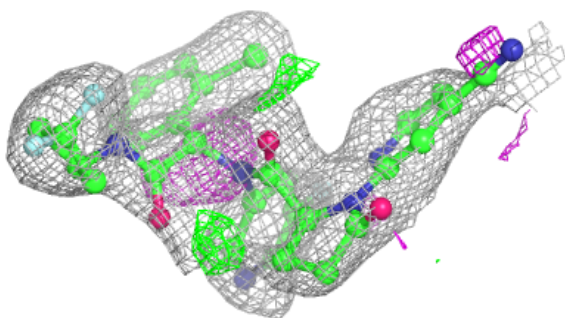
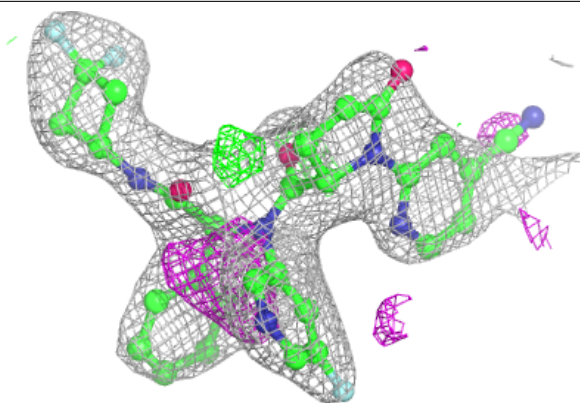
Mol	Type	Chain	Res	Atoms	RSCC	RSR	B-factors(Å ²)	Q<0.9
2	NAP	B	500	48/48	0.50	0.38	137,142,144,144	0
3	IV3	A	502	41/41	0.85	0.20	70,73,77,79	0
2	NAP	A	501	48/48	0.94	0.12	47,50,55,56	0

The following is a graphical depiction of the model fit to experimental electron density of all instances of the Ligand of Interest. In addition, ligands with molecular weight > 250 and outliers as shown on the geometry validation Tables will also be included. Each fit is shown from different orientation to approximate a three-dimensional view.

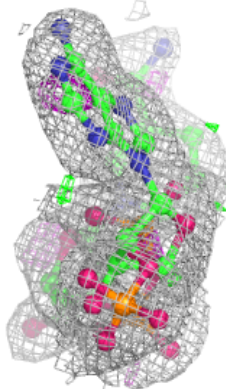
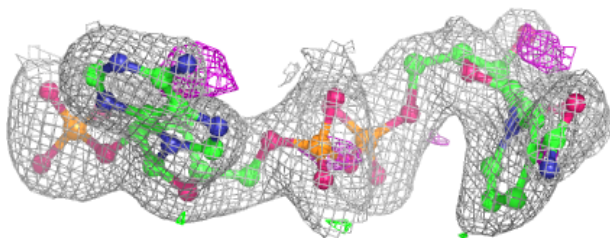
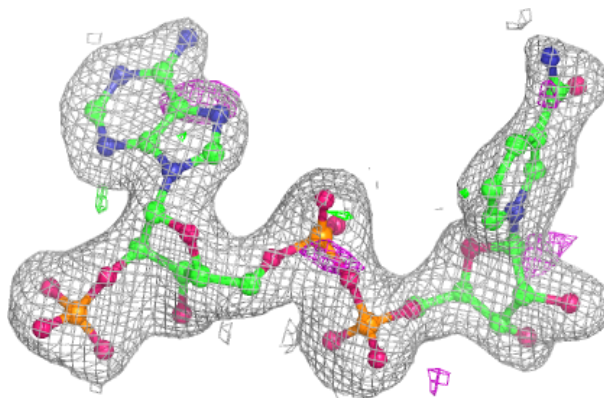


Electron density around IV3 A 502:

$2mF_o-DF_c$ (at 0.7 rmsd) in gray
 mF_o-DF_c (at 3 rmsd) in purple (negative)
and green (positive)

**Electron density around NAP A 501:**

$2mF_o-DF_c$ (at 0.7 rmsd) in gray
 mF_o-DF_c (at 3 rmsd) in purple (negative)
and green (positive)



6.5 Other polymers [i](#)

There are no such residues in this entry.