



Full wwPDB EM Validation Report ⓘ

Dec 4, 2024 – 12:45 PM EST

PDB ID : 8SNO
EMDB ID : EMD-40631
Title : Structure of mature human ADAM17/iRhom2 sheddase complex, conformation 2
Authors : Zhao, H.; Dai, Y.; Wang, Y.; Lee, C.H.
Deposited on : 2023-04-27
Resolution : 2.78 Å(reported)

This is a Full wwPDB EM Validation Report for a publicly released PDB entry.

We welcome your comments at validation@mail.wwpdb.org

A user guide is available at

<https://www.wwpdb.org/validation/2017/EMValidationReportHelp>

with specific help available everywhere you see the ⓘ symbol.

The types of validation reports are described at

<http://www.wwpdb.org/validation/2017/FAQs#types>.

The following versions of software and data (see [references ⓘ](#)) were used in the production of this report:

EMDB validation analysis : 0.0.1.dev113
MolProbity : 4.02b-467
Percentile statistics : 20231227.v01 (using entries in the PDB archive December 27th 2023)
MapQ : 1.9.13
Ideal geometry (proteins) : Engh & Huber (2001)
Ideal geometry (DNA, RNA) : Parkinson et al. (1996)
Validation Pipeline (wwPDB-VP) : 2.40

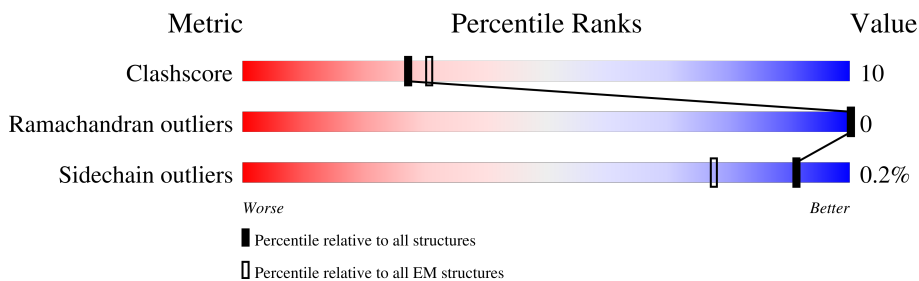
1 Overall quality at a glance

The following experimental techniques were used to determine the structure:

ELECTRON MICROSCOPY

The reported resolution of this entry is 2.78 Å.

Percentile scores (ranging between 0-100) for global validation metrics of the entry are shown in the following graphic. The table shows the number of entries on which the scores are based.



Metric	Whole archive (#Entries)	EM structures (#Entries)
Clashscore	210492	15764
Ramachandran outliers	207382	16835
Sidechain outliers	206894	16415

The table below summarises the geometric issues observed across the polymeric chains and their fit to the map. The red, orange, yellow and green segments of the bar indicate the fraction of residues that contain outliers for ≥ 3 , 2, 1 and 0 types of geometric quality criteria respectively. A grey segment represents the fraction of residues that are not modelled. The numeric value for each fraction is indicated below the corresponding segment, with a dot representing fractions $\leq 5\%$. The upper red bar (where present) indicates the fraction of residues that have poor fit to the EM map (all-atom inclusion $< 40\%$). The numeric value is given above the bar.

Mol	Chain	Length	Quality of chain
1	A	610	
2	B	827	

2 Entry composition [i](#)

There are 3 unique types of molecules in this entry. The entry contains 5685 atoms, of which 0 are hydrogens and 0 are deuteriums.

In the tables below, the AltConf column contains the number of residues with at least one atom in alternate conformation and the Trace column contains the number of residues modelled with at most 2 atoms.

- Molecule 1 is a protein called Disintegrin and metalloproteinase domain-containing protein 17.

Mol	Chain	Residues	Atoms					AltConf	Trace
			Total	C	N	O	S		
1	A	227	1745	1071	298	347	29	0	0

- Molecule 2 is a protein called Inactive rhomboid protein 2.

Mol	Chain	Residues	Atoms					AltConf	Trace
			Total	C	N	O	S		
2	B	491	3939	2564	663	686	26	0	0

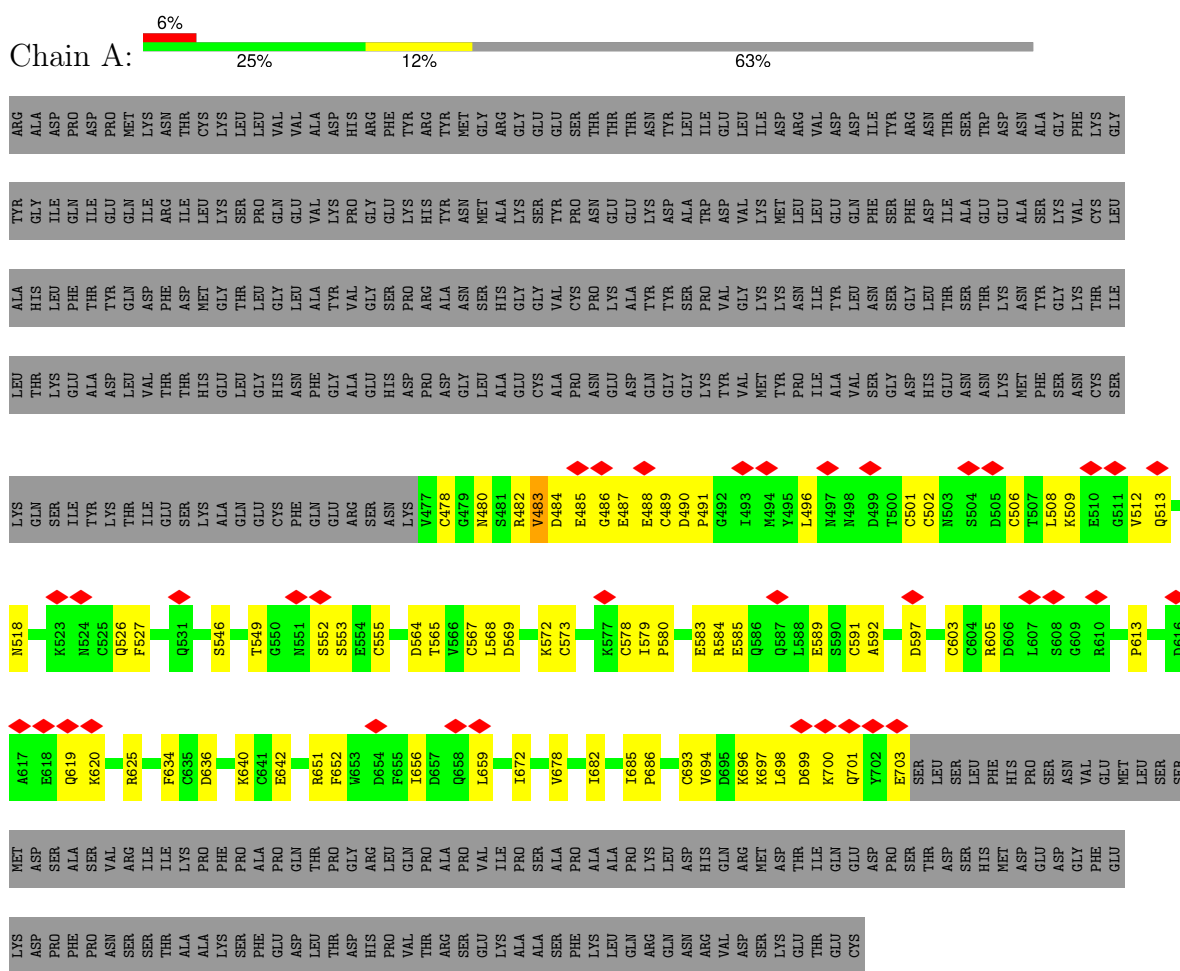
- Molecule 3 is CALCIUM ION (three-letter code: CA) (formula: Ca).

Mol	Chain	Residues	Atoms		AltConf
			Total	Ca	
3	A	1	1	1	0

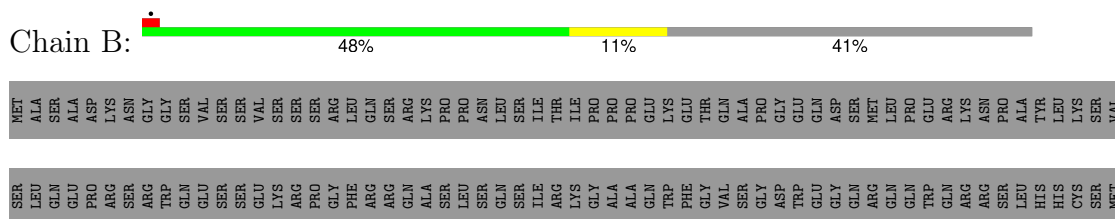
3 Residue-property plots

These plots are drawn for all protein, RNA, DNA and oligosaccharide chains in the entry. The first graphic for a chain summarises the proportions of the various outlier classes displayed in the second graphic. The second graphic shows the sequence view annotated by issues in geometry and atom inclusion in map density. Residues are color-coded according to the number of geometric quality criteria for which they contain at least one outlier: green = 0, yellow = 1, orange = 2 and red = 3 or more. A red diamond above a residue indicates a poor fit to the EM map for this residue (all-atom inclusion < 40%). Stretches of 2 or more consecutive residues without any outlier are shown as a green connector. Residues present in the sample, but not in the model, are shown in grey.

• Molecule 1: Disintegrin and metalloproteinase domain-containing protein 17



• Molecule 2: Inactive rhomboid protein 2



ARG TYR
LEU ARG
PHE ARG
PRO LYS
VAL ALA
SER SER
CYS CYS
GLN ARG
THR ASP
LEU LEU
GLU THR

PRO PRO
LEU THR
THR PRO
GLY GLY
VAL VAL
LEU LEU
SER SER
THR PHE
THR THR
SER SER
VAL VAL
PRO PRO
SER ARG
GLN GLN
GLY ASP
LEU LEU
CYS CYS
ARG ARG
VAL VAL
PRO PRO
HIS HIS

ARG SER
PHE ALA
GLN ALA
PRO PRO
SER SER
PHE PHE
LEU LEU
LYS LYS
GLU TYR
THR ARG
ASP ASP
VAL VAL
VAL VAL
ASP ASP
GLY GLY
VAL VAL
SER ARG
ALA ALA
ASP THR
PHE THR
SER SER
SER SER
PHE PHE
SER SER
SER SER
PHE PHE
GLY GLY
SER SER
MET MET
PRO PRO
ASP ASP
LYS LYS
ILE ILE
VAL VAL
PHE PHE
GLU GLU
SER SER
ALA ALA
PRO PRO
LEU LEU
LEU LEU
SER SER
GLY GLY
ARG ARG
ALA ALA
TYR TYR
PHE PHE
ARG ARG
GLY GLY
ILE ILE
PRO PRO
HIS HIS
SER SER
ALA ALA
PRO PRO
VAL VAL
SER SER
PRO PRO

ASP GLY
VAL VAL
GLN GLN
ILE ILE
PRO PRO
LEU LEU
LYS LYS
GLU TYR
THR ARG
ASP ASP
VAL VAL
PRO PRO
VAL VAL
PRO PRO
GLY GLY
ALA ALA
ASP THR
PHE THR
SER SER
SER SER
ILE ILE
ALA ALA
SER SER
LYS LYS
VAL VAL
GLU TYR
MET MET
SER SER
VAL VAL
ALA ALA
HIS HIS
MET MET
PRO PRO
ASP ASP
ASP ASP
LYS LYS
VAL VAL
PHE PHE
GLU GLU
SER SER
PRO PRO
LEU LEU
LEU LEU
SER SER
ALA ALA
SER SER
TYR TYR
PHE PHE
ARG ARG
GLY GLY
ILE ILE
PRO PRO
HIS HIS
SER SER
ALA ALA
PRO PRO
VAL VAL
SER SER
PRO PRO

E418 E423 E426 E435 E441 E446 E449 E450 Q453 I454 E455 V458 R462 E465 V472 Q473 N474 D475 I480 Q483 T482 D486 V497 Q498 D499 D500 T501 G502 M505 D506 R507 S508 D509 L510 G511 Q512 K513 R514 R515 S516 G517 A518 C520 R521

Q522 D523 E528 E529 P530 A531 D540 P546 E550 R553 L560 H561 H562 I566 K567 G568 R569 K576 E580 N581 T582 F594 S602 R609 L613 L614 P615 L628 F647 Q648 D654 L655 E656 N676 L683 P684 P691 Q695 L698

L712 R715 K718 L728 I732 L736 P737 W738 I742 I762 K769 R772 R773 T808 R814 R815 V825 L826 H827

4 Experimental information

Property	Value	Source
EM reconstruction method	SINGLE PARTICLE	Depositor
Imposed symmetry	POINT, Not provided	
Number of particles used	325764	Depositor
Resolution determination method	FSC 0.143 CUT-OFF	Depositor
CTF correction method	NONE	Depositor
Microscope	FEI TITAN KRIOS	Depositor
Voltage (kV)	300	Depositor
Electron dose ($e^-/\text{\AA}^2$)	66.6	Depositor
Minimum defocus (nm)	600	Depositor
Maximum defocus (nm)	1600	Depositor
Magnification	Not provided	
Image detector	GATAN K3 (6k x 4k)	Depositor
Maximum map value	4.664	Depositor
Minimum map value	-2.852	Depositor
Average map value	0.000	Depositor
Map value standard deviation	0.052	Depositor
Recommended contour level	0.55	Depositor
Map size (\AA)	343.3248, 343.3248, 343.3248	wwPDB
Map dimensions	416, 416, 416	wwPDB
Map angles ($^\circ$)	90.0, 90.0, 90.0	wwPDB
Pixel spacing (\AA)	0.8253, 0.8253, 0.8253	Depositor

5 Model quality [i](#)

5.1 Standard geometry [i](#)

Bond lengths and bond angles in the following residue types are not validated in this section: CA

The Z score for a bond length (or angle) is the number of standard deviations the observed value is removed from the expected value. A bond length (or angle) with $|Z| > 5$ is considered an outlier worth inspection. RMSZ is the root-mean-square of all Z scores of the bond lengths (or angles).

Mol	Chain	Bond lengths		Bond angles	
		RMSZ	# Z >5	RMSZ	# Z >5
1	A	0.31	0/1773	0.50	1/2390 (0.0%)
2	B	0.27	0/4055	0.48	1/5517 (0.0%)
All	All	0.28	0/5828	0.49	2/7907 (0.0%)

There are no bond length outliers.

All (2) bond angle outliers are listed below:

Mol	Chain	Res	Type	Atoms	Z	Observed(°)	Ideal(°)
2	B	518	ALA	N-CA-C	-5.88	95.13	111.00
1	A	483	VAL	CB-CA-C	-5.35	101.24	111.40

There are no chirality outliers.

There are no planarity outliers.

5.2 Too-close contacts [i](#)

In the following table, the Non-H and H(model) columns list the number of non-hydrogen atoms and hydrogen atoms in the chain respectively. The H(added) column lists the number of hydrogen atoms added and optimized by MolProbity. The Clashes column lists the number of clashes within the asymmetric unit, whereas Symm-Clashes lists symmetry-related clashes.

Mol	Chain	Non-H	H(model)	H(added)	Clashes	Symm-Clashes
1	A	1745	0	1637	55	0
2	B	3939	0	3875	60	0
3	A	1	0	0	0	0
All	All	5685	0	5512	107	0

The all-atom clashscore is defined as the number of clashes found per 1000 atoms (including hydrogen atoms). The all-atom clashscore for this structure is 10.

All (107) close contacts within the same asymmetric unit are listed below, sorted by their clash magnitude.

Atom-1	Atom-2	Interatomic distance (Å)	Clash overlap (Å)
2:B:506:ASP:HB3	2:B:509:ASP:HB2	1.60	0.84
1:A:651:ARG:HH12	2:B:615:PRO:HB2	1.52	0.74
1:A:672:ILE:HD12	1:A:672:ILE:H	1.56	0.70
2:B:712:LEU:HD11	2:B:762:ILE:HD11	1.75	0.68
2:B:522:GLN:N	2:B:562:MET:HE1	2.13	0.65
2:B:465:GLU:OE2	2:B:602:SER:OG	2.13	0.64
1:A:697:LYS:O	1:A:701:GLN:HG2	1.97	0.64
2:B:502:GLY:HA3	2:B:514:ARG:O	1.98	0.63
1:A:584:ARG:NH1	1:A:585:GLU:OE2	2.33	0.61
2:B:502:GLY:O	2:B:513:LYS:HE3	2.01	0.61
1:A:694:VAL:HA	1:A:697:LYS:HE2	1.84	0.59
1:A:699:ASP:O	1:A:703:GLU:HG2	2.03	0.59
2:B:523:ASP:HB2	2:B:562:MET:HE3	1.84	0.58
1:A:625:ARG:NH2	2:B:550:GLU:OE1	2.35	0.58
1:A:651:ARG:NH2	2:B:615:PRO:O	2.36	0.56
1:A:501:CYS:HA	1:A:509:LYS:HD2	1.88	0.55
1:A:549:THR:HB	1:A:552:SER:HB3	1.87	0.55
2:B:441:GLY:HA2	2:B:613:LEU:HD11	1.87	0.55
2:B:520:CYS:O	2:B:562:MET:HE2	2.05	0.55
1:A:501:CYS:HB2	1:A:512:VAL:HG21	1.88	0.55
1:A:696:LYS:O	1:A:700:LYS:HD3	2.07	0.55
2:B:338:ARG:NE	2:B:654:ASP:OD1	2.39	0.55
2:B:522:GLN:NE2	2:B:546:PRO:O	2.32	0.54
2:B:383:HIS:CE1	2:B:648:GLN:HE22	2.26	0.54
2:B:376:THR:OG1	2:B:656:GLU:OE1	2.20	0.54
1:A:569:ASP:OD2	2:B:531:ALA:HB3	2.08	0.54
2:B:715:ARG:HE	2:B:718:LYS:HD2	1.72	0.54
1:A:678:VAL:O	1:A:682:ILE:HG13	2.09	0.53
1:A:580:PRO:HB2	1:A:583:GLU:OE1	2.10	0.52
2:B:458:VAL:O	2:B:462:ARG:HG2	2.09	0.52
2:B:580:GLU:HG3	2:B:582:THR:HG23	1.90	0.52
1:A:693:CYS:O	1:A:697:LYS:HG3	2.10	0.52
2:B:401:PHE:HB3	2:B:738:TRP:CZ2	2.45	0.52
2:B:762:ILE:O	2:B:772:LYS:NZ	2.42	0.52
2:B:516:SER:HB3	2:B:540:ASP:O	2.10	0.51
2:B:529:GLU:HB3	2:B:550:GLU:HB3	1.91	0.51
2:B:505:MET:N	2:B:512:GLN:O	2.41	0.51
1:A:568:LEU:HD12	2:B:528:GLU:HG2	1.94	0.50
1:A:694:VAL:O	1:A:698:LEU:HD23	2.12	0.49
2:B:446:PRO:HD3	2:B:684:PRO:O	2.12	0.49

Continued on next page...

Continued from previous page...

Atom-1	Atom-2	Interatomic distance (Å)	Clash overlap (Å)
2:B:472:VAL:HG11	2:B:560:LEU:HG	1.94	0.49
2:B:691:PRO:O	2:B:695:GLN:HG3	2.13	0.49
1:A:546:SER:OG	1:A:555:CYS:SG	2.71	0.48
1:A:480:ASN:HB2	2:B:474:ASN:HD22	1.78	0.48
1:A:483:VAL:HG13	1:A:489:CYS:HA	1.95	0.48
2:B:647:PHE:HE1	2:B:698:LEU:HD12	1.79	0.47
1:A:483:VAL:CG1	1:A:489:CYS:HA	2.44	0.47
1:A:491:PRO:HB2	1:A:496:LEU:HA	1.97	0.47
1:A:652:PHE:O	1:A:656:ILE:HG12	2.15	0.47
1:A:636:ASP:OD1	1:A:640:LYS:N	2.46	0.47
1:A:527:PHE:CE1	1:A:553:SER:HB2	2.50	0.47
1:A:685:ILE:HB	1:A:686:PRO:HD3	1.96	0.46
2:B:728:LEU:O	2:B:732:ILE:HG12	2.15	0.46
1:A:603:CYS:HA	1:A:613:PRO:HA	1.96	0.46
2:B:480:ILE:HG23	2:B:482:THR:HG23	1.97	0.46
2:B:510:LEU:H	2:B:510:LEU:HD22	1.80	0.46
2:B:412:ARG:HG3	2:B:418:GLU:HB2	1.98	0.46
2:B:628:LEU:O	2:B:676:ASN:ND2	2.35	0.46
1:A:480:ASN:HD22	2:B:474:ASN:ND2	2.14	0.45
1:A:483:VAL:CG2	1:A:518:ASN:CG	2.85	0.45
1:A:591:CYS:SG	1:A:592:ALA:N	2.89	0.45
2:B:609:LYS:HE3	2:B:609:LYS:HB3	1.77	0.45
2:B:505:MET:O	2:B:505:MET:HG2	2.17	0.45
1:A:487:GLU:HB2	1:A:506:CYS:SG	2.57	0.45
1:A:485:GLU:H	1:A:485:GLU:CD	2.20	0.45
2:B:736:LEU:HB3	2:B:738:TRP:HE3	1.82	0.45
1:A:483:VAL:HG22	1:A:518:ASN:OD1	2.17	0.45
1:A:491:PRO:HG3	1:A:502:CYS:HB3	1.98	0.44
1:A:513:GLN:NE2	1:A:526:GLN:OE1	2.50	0.44
1:A:597:ASP:OD1	1:A:597:ASP:N	2.51	0.44
2:B:497:TRP:CD2	2:B:517:GLY:O	2.69	0.44
1:A:485:GLU:HG2	1:A:486:GLY:N	2.32	0.44
1:A:490:ASP:HA	1:A:491:PRO:HD3	1.86	0.44
2:B:769:LYS:HG2	2:B:773:ARG:NH1	2.33	0.44
1:A:567:CYS:HB3	1:A:568:LEU:H	1.55	0.44
1:A:656:ILE:O	1:A:659:LEU:HD23	2.19	0.43
2:B:435:ILE:H	2:B:435:ILE:HD12	1.83	0.43
1:A:619:GLN:HG3	1:A:620:LYS:H	1.83	0.43
2:B:482:THR:HB	2:B:486:ASP:HB2	2.01	0.43
2:B:576:LYS:HG3	2:B:826:LEU:HD11	2.01	0.43
1:A:584:ARG:HG3	1:A:585:GLU:OE1	2.18	0.43

Continued on next page...

Continued from previous page...

Atom-1	Atom-2	Interatomic distance (Å)	Clash overlap (Å)
1:A:578:CYS:SG	1:A:579:ILE:N	2.92	0.42
2:B:405:VAL:HG22	2:B:423:ILE:HG23	2.00	0.42
2:B:475:ASP:OD1	2:B:475:ASP:N	2.52	0.42
2:B:683:LEU:HD21	2:B:808:THR:HG21	2.01	0.42
2:B:355:ARG:HA	2:B:355:ARG:HD2	1.71	0.42
2:B:453:GLN:HE22	2:B:825:VAL:HA	1.85	0.42
1:A:564:ASP:HA	1:A:572:LYS:HB3	2.02	0.42
1:A:565:THR:HG22	1:A:573:CYS:HB3	2.01	0.42
1:A:482:ARG:NE	2:B:474:ASN:HD21	2.17	0.42
1:A:634:PHE:O	1:A:642:GLU:HG2	2.19	0.41
2:B:404:HIS:HB2	2:B:426:GLU:HG2	2.01	0.41
1:A:483:VAL:HG12	1:A:484:ASP:O	2.21	0.41
1:A:484:ASP:H	1:A:487:GLU:CD	2.24	0.41
2:B:344:VAL:N	2:B:654:ASP:OD2	2.53	0.41
2:B:498:GLN:N	2:B:501:THR:OG1	2.52	0.41
1:A:491:PRO:HG2	1:A:496:LEU:HD12	2.02	0.41
2:B:742:ILE:HG12	2:B:808:THR:HB	2.02	0.41
2:B:387:THR:O	2:B:391:ILE:HG12	2.20	0.41
2:B:736:LEU:HB3	2:B:738:TRP:CE3	2.55	0.41
1:A:478:CYS:HA	1:A:490:ASP:OD2	2.21	0.41
1:A:589:GLU:HG2	1:A:605:ARG:HB3	2.02	0.41
2:B:566:ILE:O	2:B:568:GLY:N	2.54	0.41
2:B:569:ARG:HB2	2:B:594:PHE:CZ	2.56	0.41
1:A:488:GLU:OE1	1:A:508:LEU:HB2	2.21	0.40
1:A:698:LEU:HD13	1:A:698:LEU:HA	1.96	0.40
2:B:450:LYS:HE2	2:B:455:GLU:OE1	2.21	0.40

There are no symmetry-related clashes.

5.3 Torsion angles [\(i\)](#)

5.3.1 Protein backbone [\(i\)](#)

In the following table, the Percentiles column shows the percent Ramachandran outliers of the chain as a percentile score with respect to all PDB entries followed by that with respect to all EM entries.

The Analysed column shows the number of residues for which the backbone conformation was analysed, and the total number of residues.

Mol	Chain	Analysed	Favoured	Allowed	Outliers	Percentiles	
1	A	225/610 (37%)	212 (94%)	13 (6%)	0	100	100
2	B	489/827 (59%)	463 (95%)	26 (5%)	0	100	100
All	All	714/1437 (50%)	675 (94%)	39 (6%)	0	100	100

There are no Ramachandran outliers to report.

5.3.2 Protein sidechains [i](#)

In the following table, the Percentiles column shows the percent sidechain outliers of the chain as a percentile score with respect to all PDB entries followed by that with respect to all EM entries.

The Analysed column shows the number of residues for which the sidechain conformation was analysed, and the total number of residues.

Mol	Chain	Analysed	Rotameric	Outliers	Percentiles	
1	A	202/539 (38%)	202 (100%)	0	100	100
2	B	429/721 (60%)	428 (100%)	1 (0%)	92	97
All	All	631/1260 (50%)	630 (100%)	1 (0%)	91	97

All (1) residues with a non-rotameric sidechain are listed below:

Mol	Chain	Res	Type
2	B	449	ARG

Sometimes sidechains can be flipped to improve hydrogen bonding and reduce clashes. All (2) such sidechains are listed below:

Mol	Chain	Res	Type
2	B	383	HIS
2	B	474	ASN

5.3.3 RNA [i](#)

There are no RNA molecules in this entry.

5.4 Non-standard residues in protein, DNA, RNA chains [i](#)

There are no non-standard protein/DNA/RNA residues in this entry.

5.5 Carbohydrates [i](#)

There are no oligosaccharides in this entry.

5.6 Ligand geometry [i](#)

Of 1 ligands modelled in this entry, 1 is monoatomic - leaving 0 for Mogul analysis.

There are no bond length outliers.

There are no bond angle outliers.

There are no chirality outliers.

There are no torsion outliers.

There are no ring outliers.

No monomer is involved in short contacts.

5.7 Other polymers [i](#)

There are no such residues in this entry.

5.8 Polymer linkage issues [i](#)

There are no chain breaks in this entry.

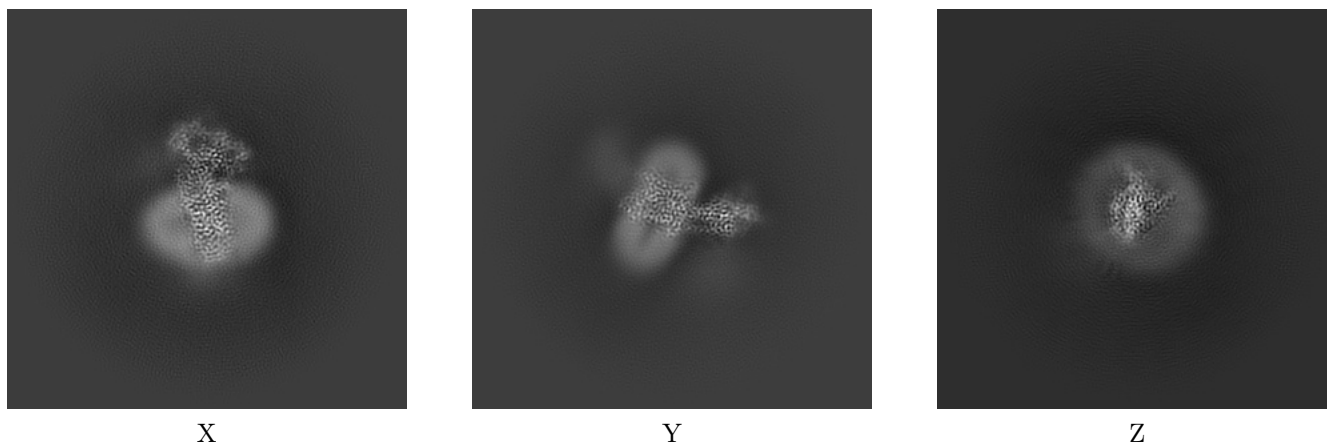
6 Map visualisation [i](#)

This section contains visualisations of the EMDB entry EMD-40631. These allow visual inspection of the internal detail of the map and identification of artifacts.

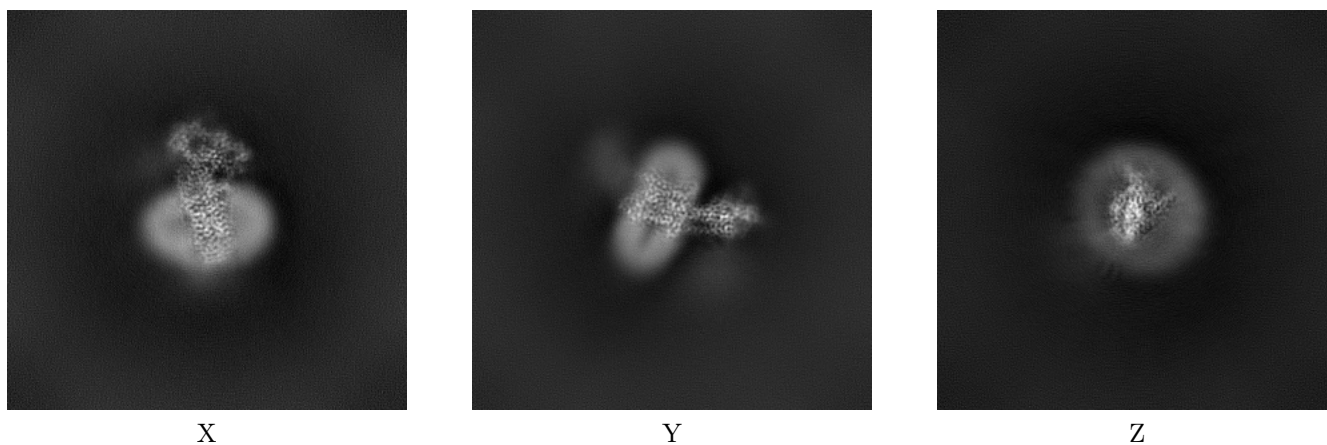
Images derived from a raw map, generated by summing the deposited half-maps, are presented below the corresponding image components of the primary map to allow further visual inspection and comparison with those of the primary map.

6.1 Orthogonal projections [i](#)

6.1.1 Primary map



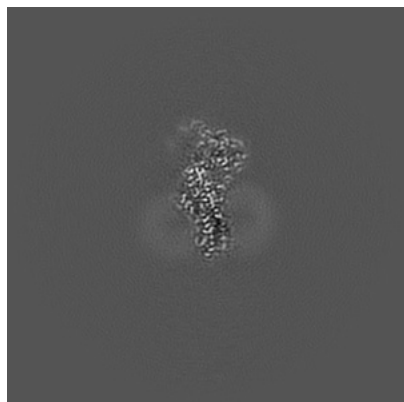
6.1.2 Raw map



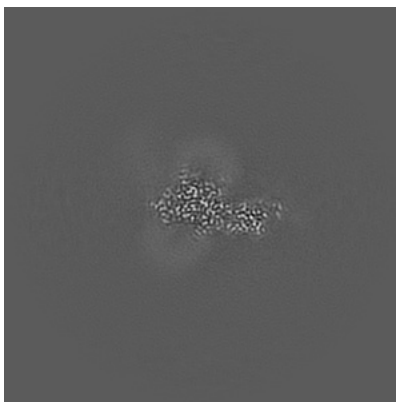
The images above show the map projected in three orthogonal directions.

6.2 Central slices [i](#)

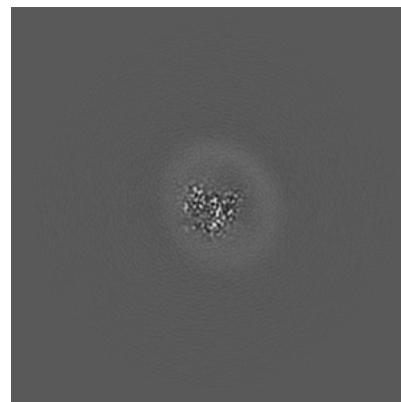
6.2.1 Primary map



X Index: 208

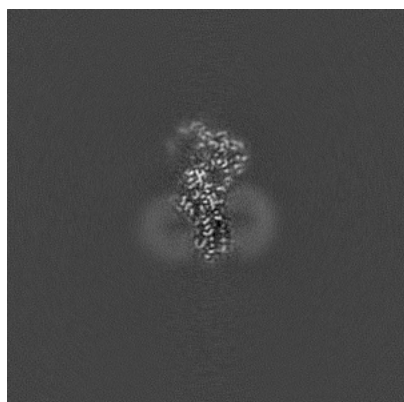


Y Index: 208

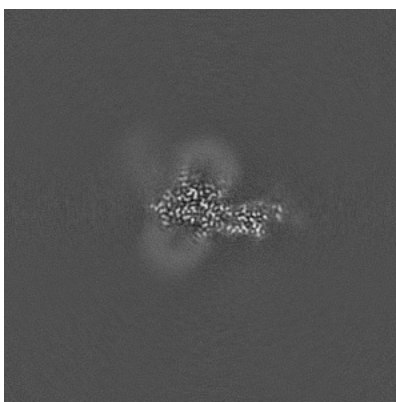


Z Index: 208

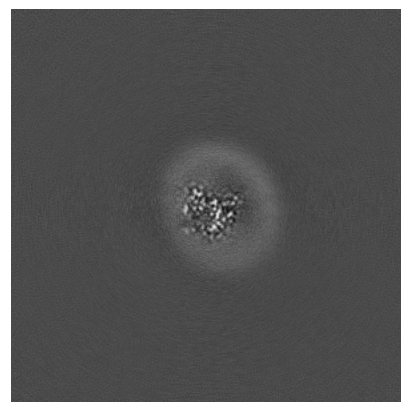
6.2.2 Raw map



X Index: 208



Y Index: 208

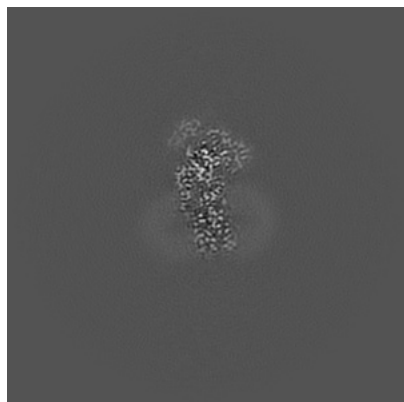


Z Index: 208

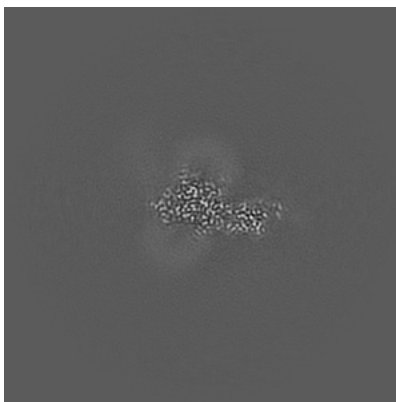
The images above show central slices of the map in three orthogonal directions.

6.3 Largest variance slices [i](#)

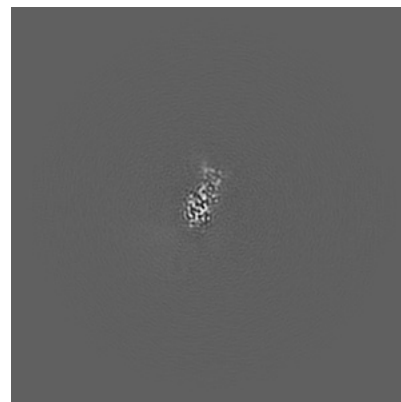
6.3.1 Primary map



X Index: 202

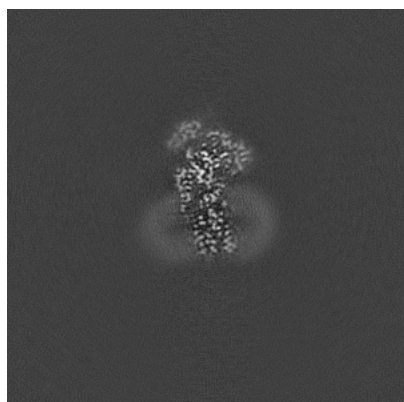


Y Index: 208

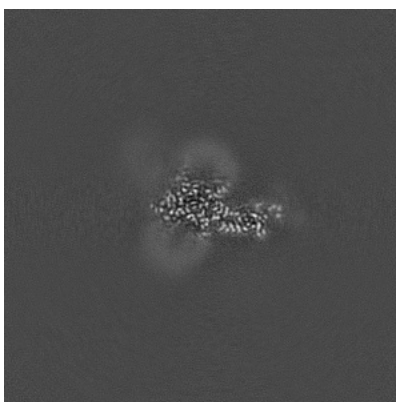


Z Index: 259

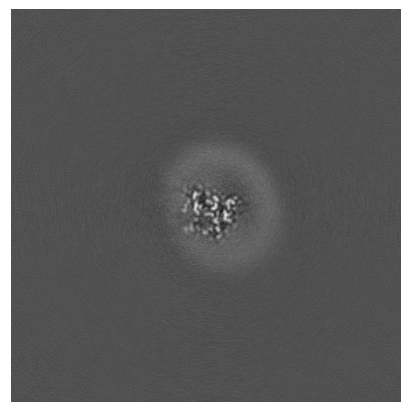
6.3.2 Raw map



X Index: 202



Y Index: 210

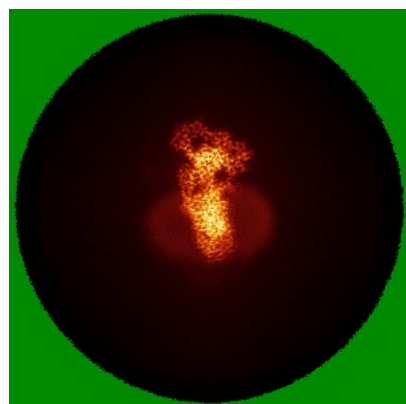


Z Index: 210

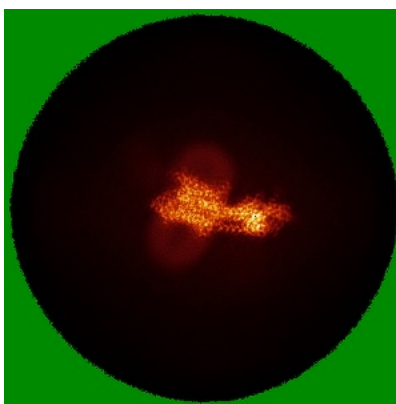
The images above show the largest variance slices of the map in three orthogonal directions.

6.4 Orthogonal standard-deviation projections (False-color) [i](#)

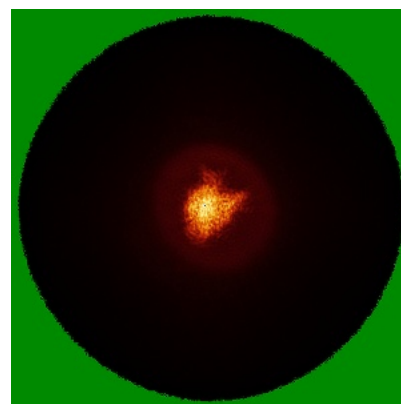
6.4.1 Primary map



X

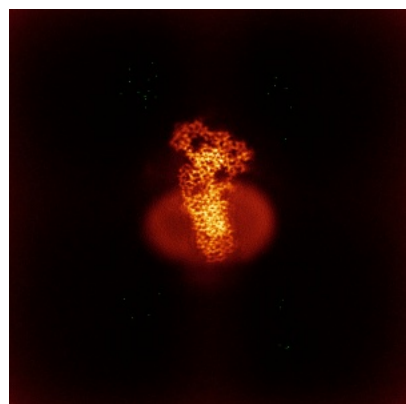


Y

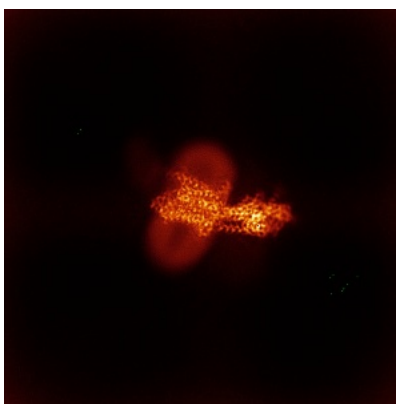


Z

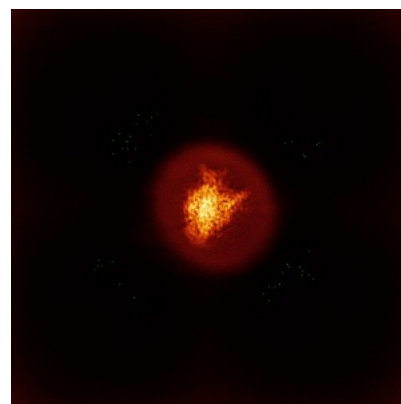
6.4.2 Raw map



X



Y

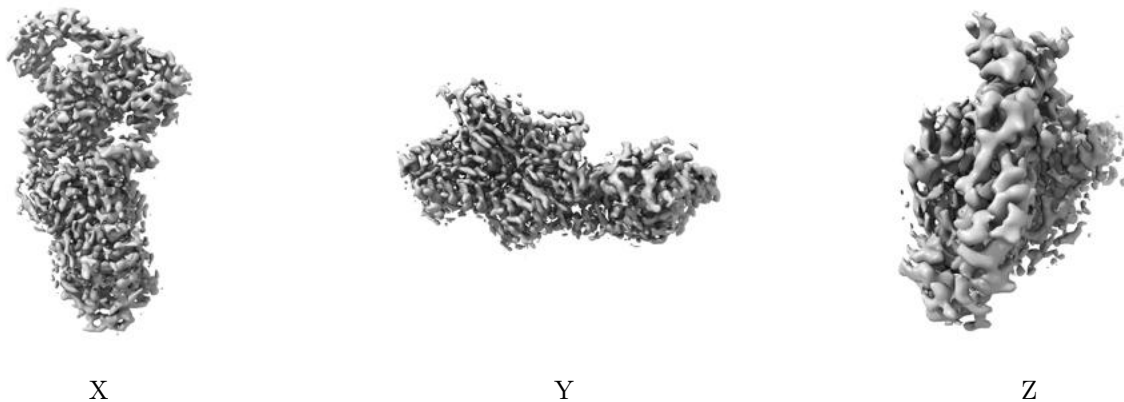


Z

The images above show the map standard deviation projections with false color in three orthogonal directions. Minimum values are shown in green, max in blue, and dark to light orange shades represent small to large values respectively.

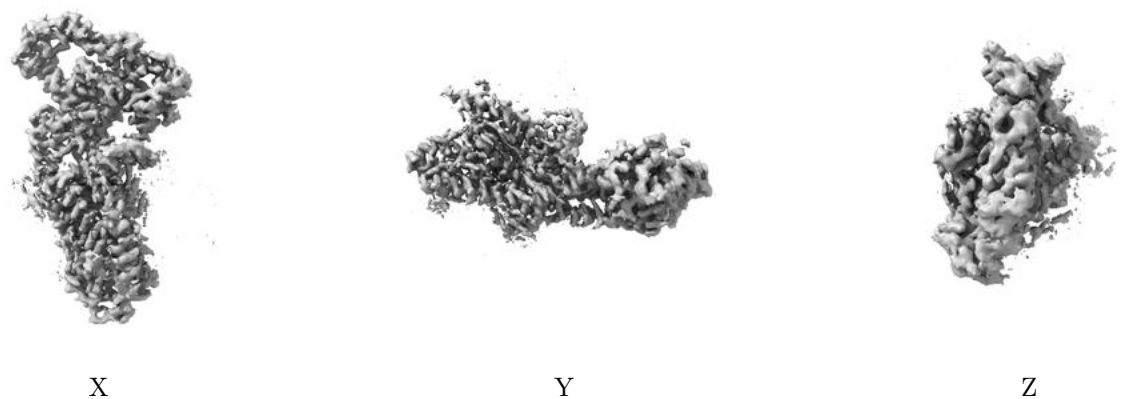
6.5 Orthogonal surface views [i](#)

6.5.1 Primary map



The images above show the 3D surface view of the map at the recommended contour level 0.55. These images, in conjunction with the slice images, may facilitate assessment of whether an appropriate contour level has been provided.

6.5.2 Raw map



These images show the 3D surface of the raw map. The raw map's contour level was selected so that its surface encloses the same volume as the primary map does at its recommended contour level.

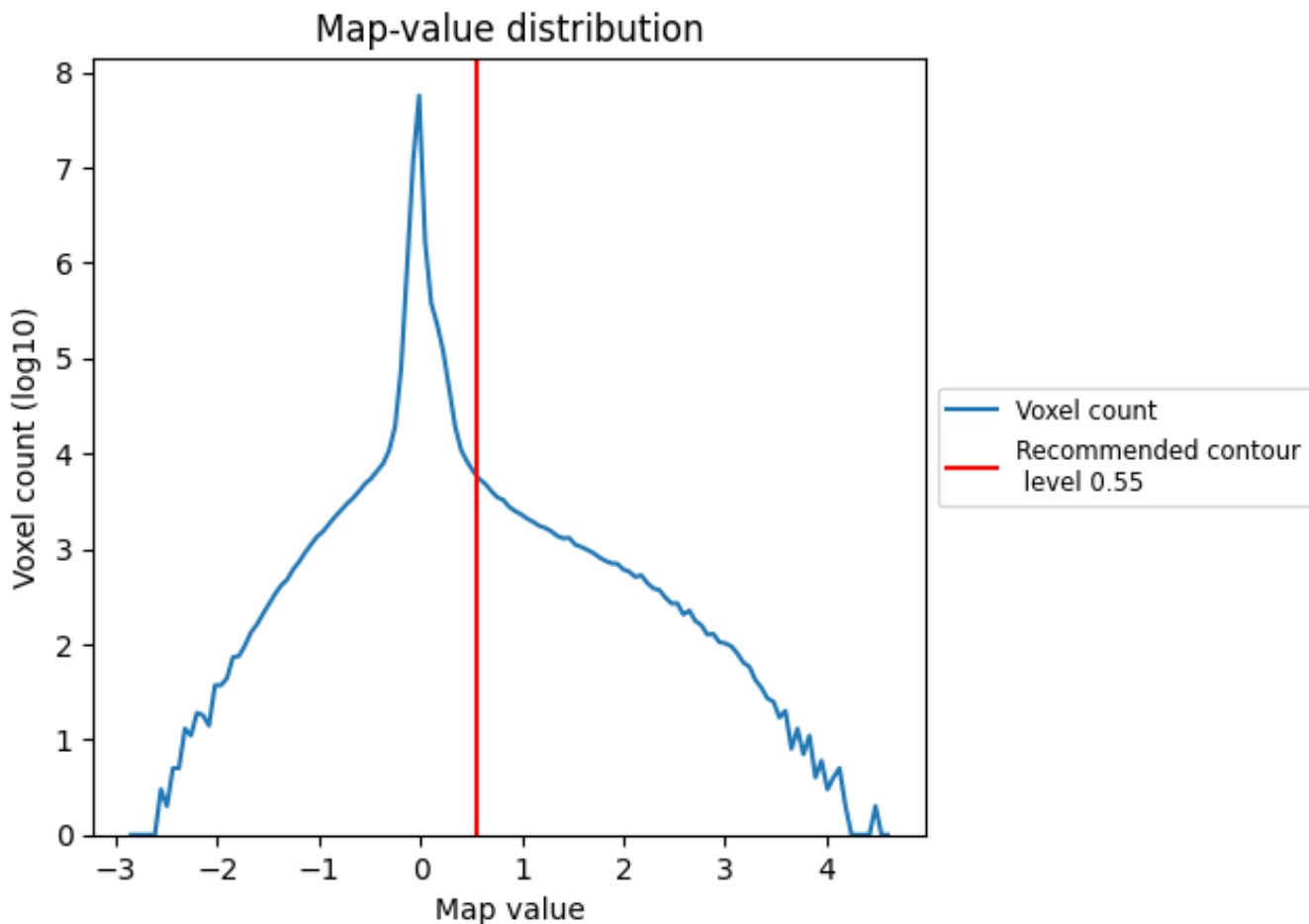
6.6 Mask visualisation [i](#)

This section was not generated. No masks/segmentation were deposited.

7 Map analysis [i](#)

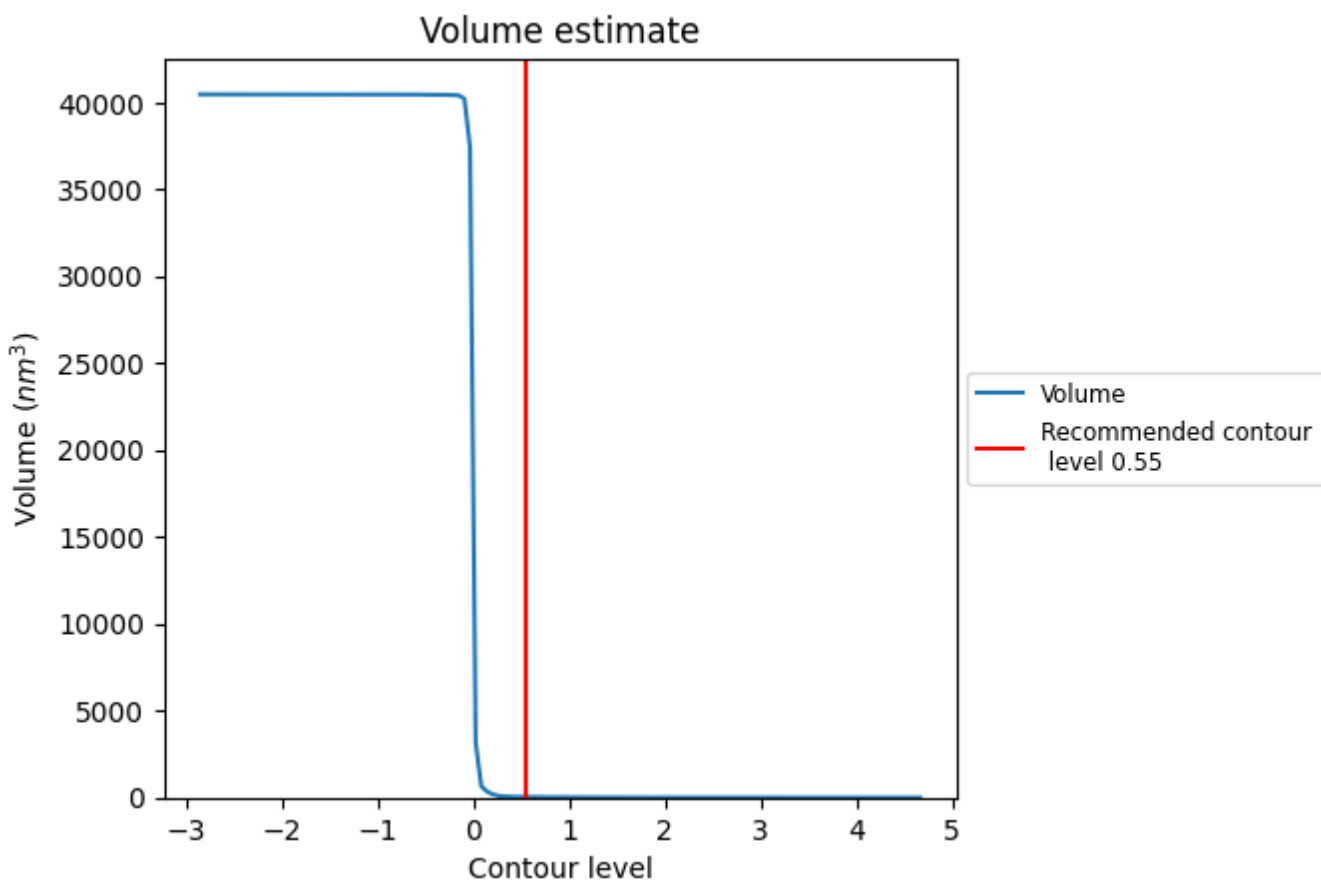
This section contains the results of statistical analysis of the map.

7.1 Map-value distribution [i](#)



The map-value distribution is plotted in 128 intervals along the x-axis. The y-axis is logarithmic. A spike in this graph at zero usually indicates that the volume has been masked.

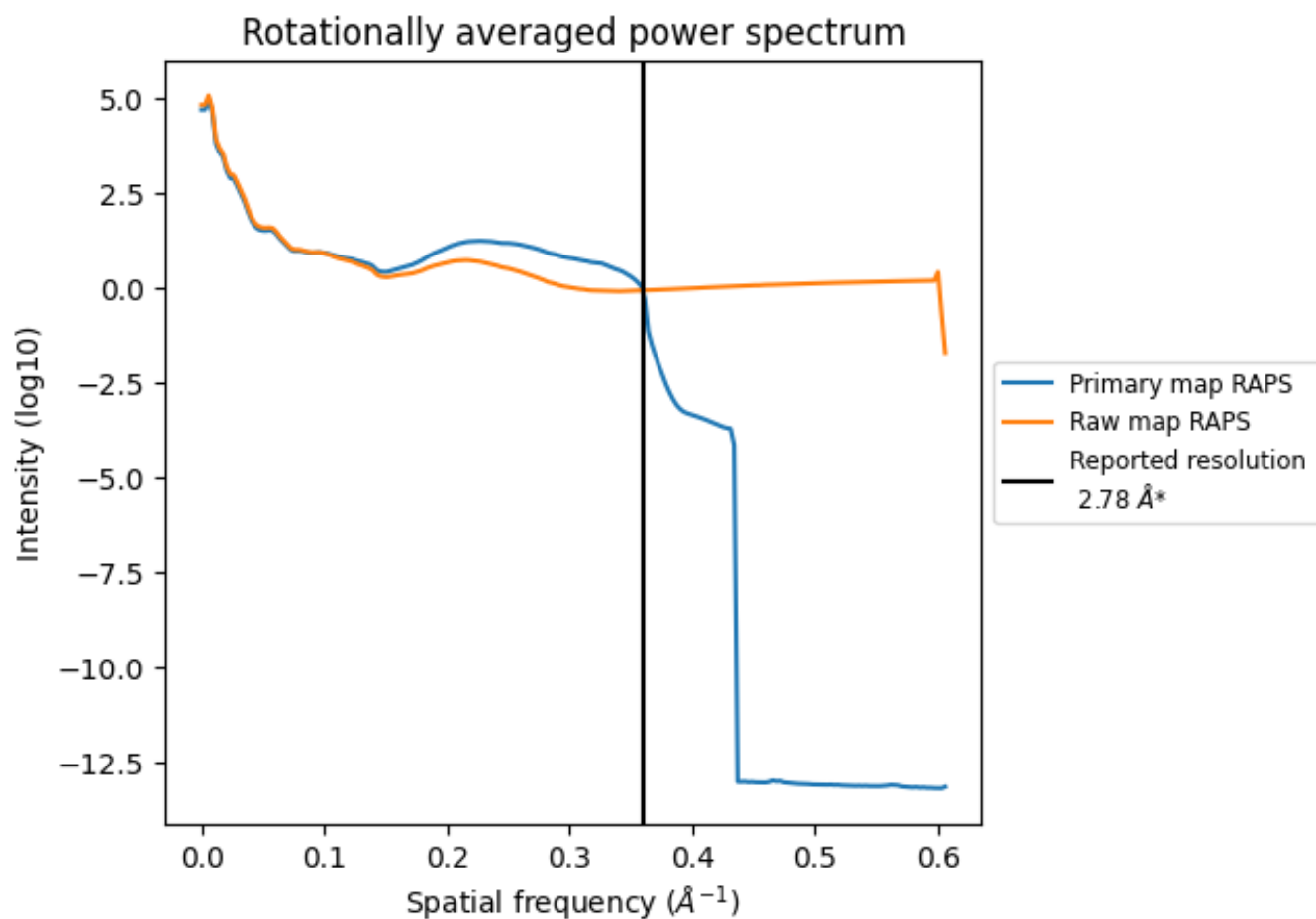
7.2 Volume estimate [i](#)



The volume at the recommended contour level is 32 nm³; this corresponds to an approximate mass of 29 kDa.

The volume estimate graph shows how the enclosed volume varies with the contour level. The recommended contour level is shown as a vertical line and the intersection between the line and the curve gives the volume of the enclosed surface at the given level.

7.3 Rotationally averaged power spectrum [i](#)

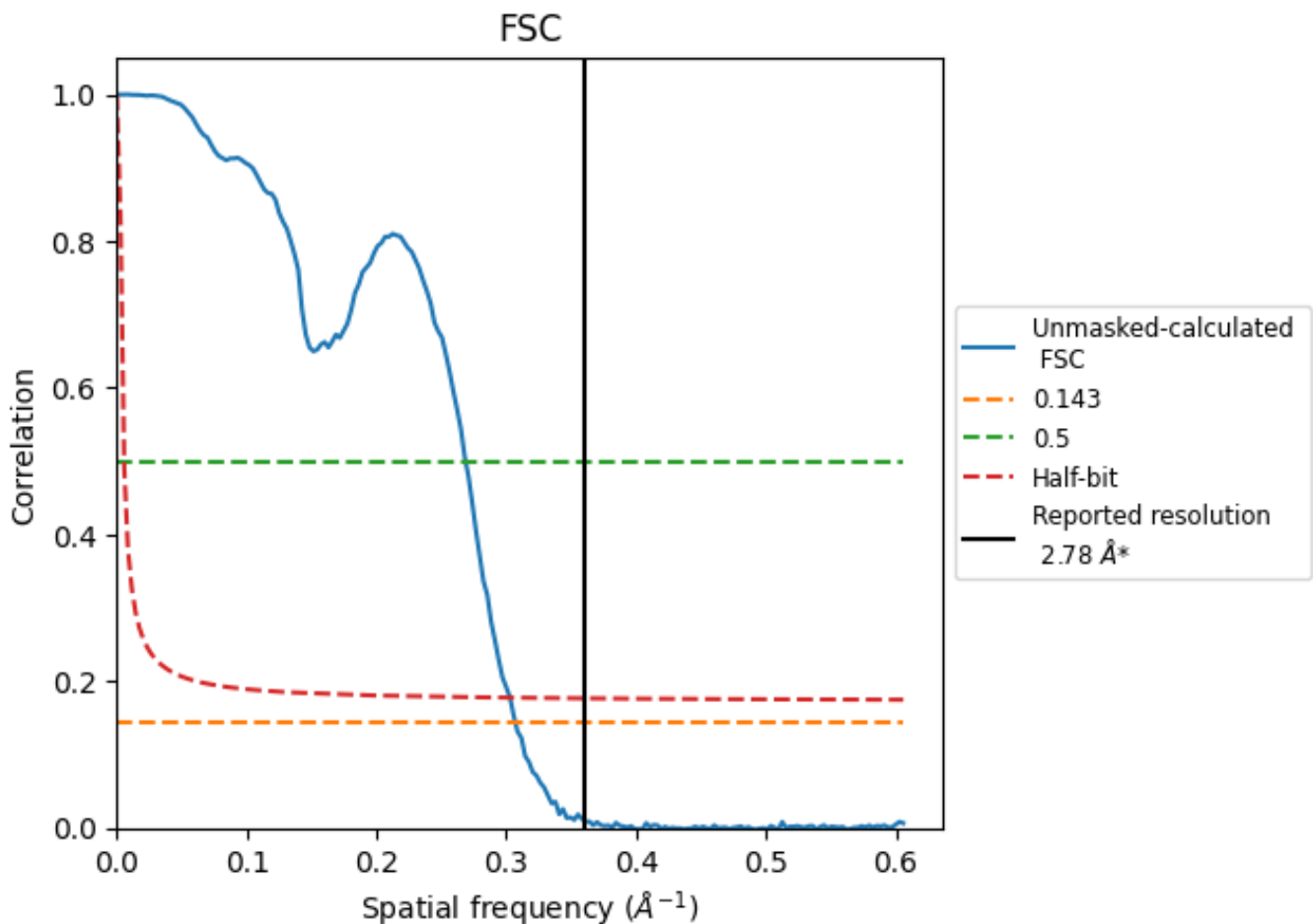


*Reported resolution corresponds to spatial frequency of 0.360 Å⁻¹

8 Fourier-Shell correlation [i](#)

Fourier-Shell Correlation (FSC) is the most commonly used method to estimate the resolution of single-particle and subtomogram-averaged maps. The shape of the curve depends on the imposed symmetry, mask and whether or not the two 3D reconstructions used were processed from a common reference. The reported resolution is shown as a black line. A curve is displayed for the half-bit criterion in addition to lines showing the 0.143 gold standard cut-off and 0.5 cut-off.

8.1 FSC [i](#)



*Reported resolution corresponds to spatial frequency of 0.360 Å⁻¹

8.2 Resolution estimates [i](#)

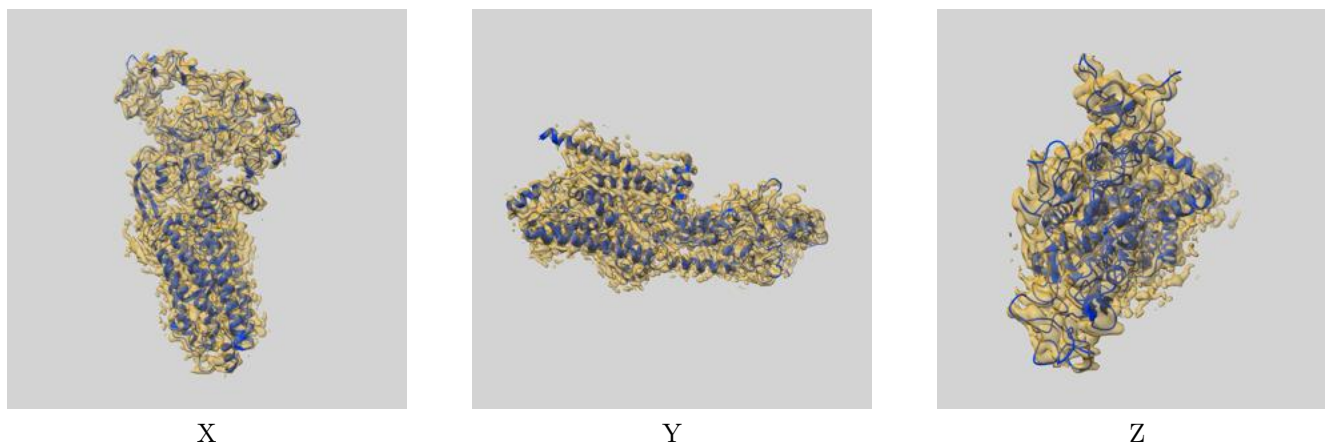
Resolution estimate (Å)	Estimation criterion (FSC cut-off)		
	0.143	0.5	Half-bit
Reported by author	2.78	-	-
Author-provided FSC curve	-	-	-
Unmasked-calculated*	3.26	3.72	3.30

*Resolution estimate based on FSC curve calculated by comparison of deposited half-maps. The value from deposited half-maps intersecting FSC 0.143 CUT-OFF 3.26 differs from the reported value 2.78 by more than 10 %

9 Map-model fit [i](#)

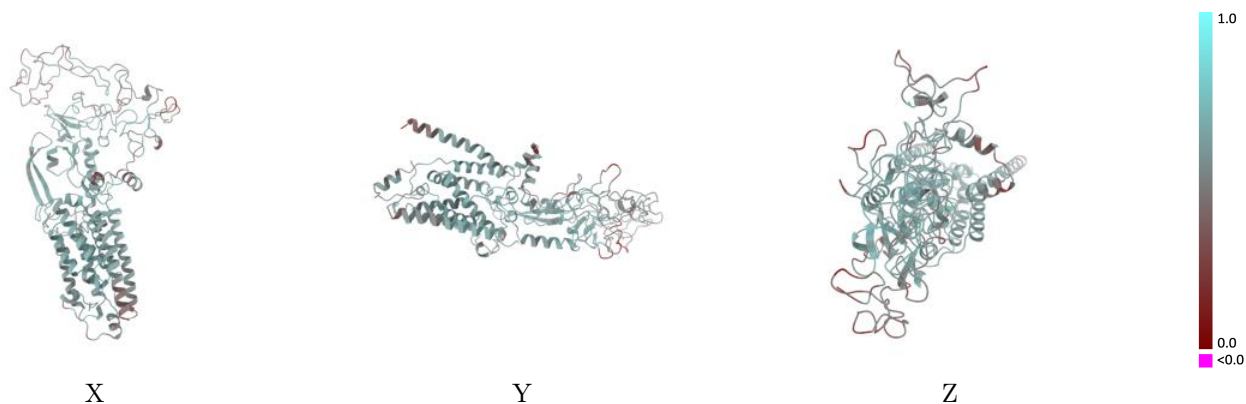
This section contains information regarding the fit between EMDB map EMD-40631 and PDB model 8SNO. Per-residue inclusion information can be found in section 3 on page 4.

9.1 Map-model overlay [i](#)



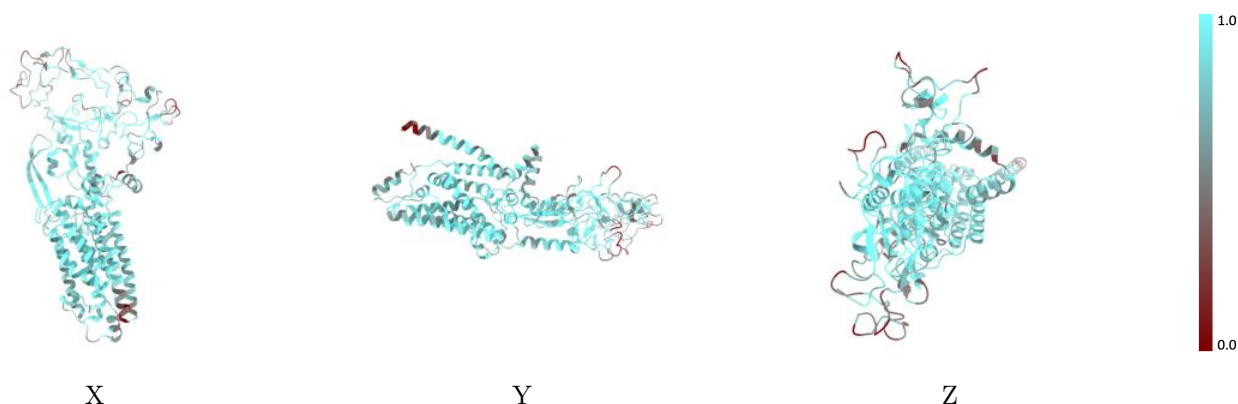
The images above show the 3D surface view of the map at the recommended contour level 0.55 at 50% transparency in yellow overlaid with a ribbon representation of the model coloured in blue. These images allow for the visual assessment of the quality of fit between the atomic model and the map.

9.2 Q-score mapped to coordinate model [\(i\)](#)



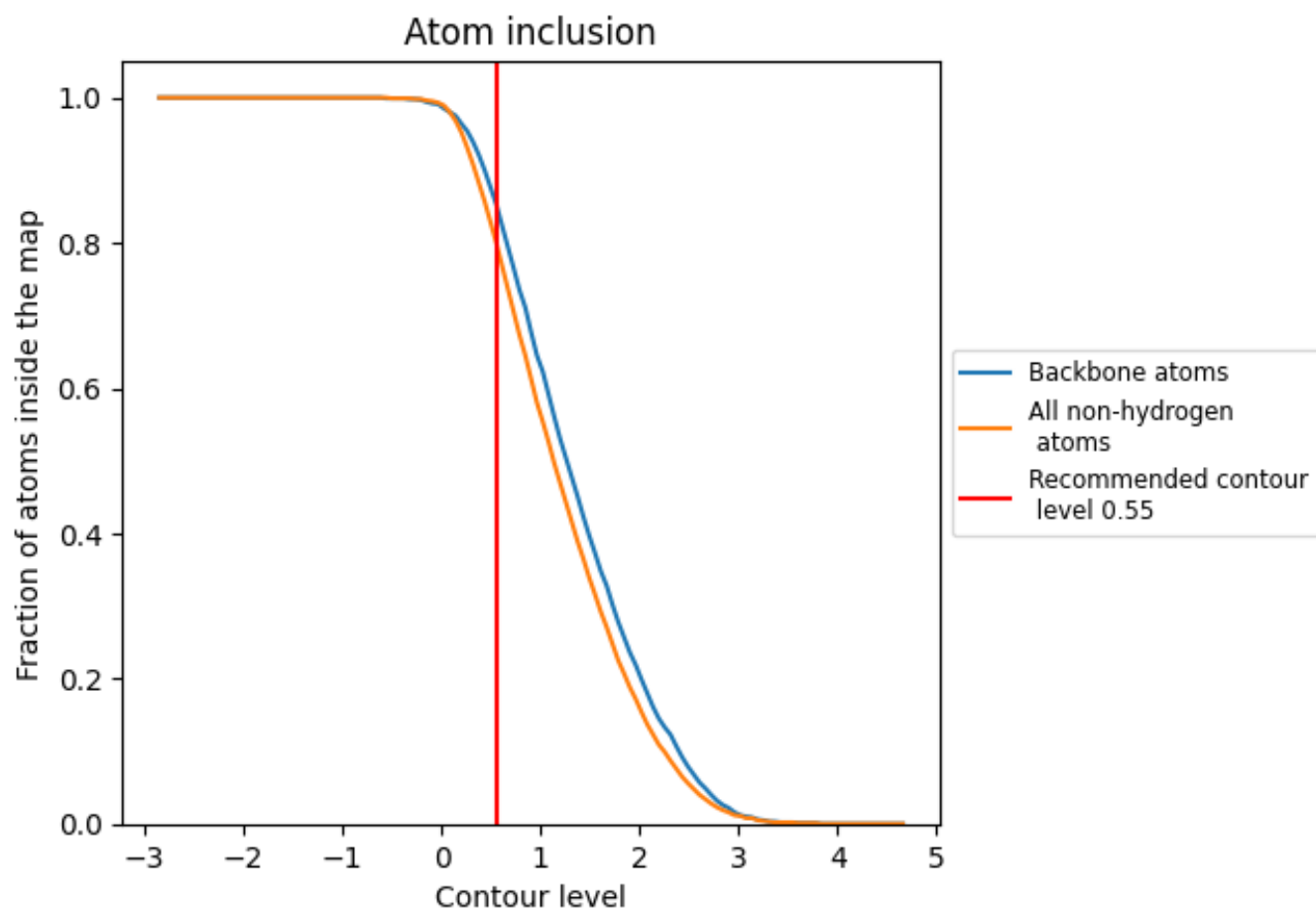
The images above show the model with each residue coloured according to its Q-score. This shows their resolvability in the map with higher Q-score values reflecting better resolvability. Please note: Q-score is calculating the resolvability of atoms, and thus high values are only expected at resolutions at which atoms can be resolved. Low Q-score values may therefore be expected for many entries.

9.3 Atom inclusion mapped to coordinate model [\(i\)](#)



The images above show the model with each residue coloured according to its atom inclusion. This shows to what extent they are inside the map at the recommended contour level (0.55).





9.4 Atom inclusion [i](#)



At the recommended contour level, 86% of all backbone atoms, 80% of all non-hydrogen atoms, are inside the map.

9.5 Map-model fit summary [i](#)

The table lists the average atom inclusion at the recommended contour level (0.55) and Q-score for the entire model and for each chain.

Chain	Atom inclusion	Q-score
All	 0.8010	 0.5520
A	 0.6520	 0.4820
B	 0.8680	 0.5830

