



Full wwPDB X-ray Structure Validation Report ⓘ

Jan 2, 2025 – 12:16 pm GMT

PDB ID : 8RWH
Title : Dark structure of the human adenosine A2A receptor bound to synthetic photoswitch 'StilSwitch2' determined by serial synchrotron crystallography
Authors : Glover, H.; Weinert, T.
Deposited on : 2024-02-04
Resolution : 2.45 Å(reported)

This is a Full wwPDB X-ray Structure Validation Report for a publicly released PDB entry.

We welcome your comments at validation@mail.wwpdb.org

A user guide is available at

<https://www.wwpdb.org/validation/2017/XrayValidationReportHelp>

with specific help available everywhere you see the ⓘ symbol.

The types of validation reports are described at

<http://www.wwpdb.org/validation/2017/FAQs#types>.

The following versions of software and data (see [references ⓘ](#)) were used in the production of this report:

MolProbity : 4.02b-467
Mogul : 1.8.4, CSD as541be (2020)
Xtrriage (Phenix) : 1.13
EDS : 3.0
buster-report : 1.1.7 (2018)
Percentile statistics : 20231227.v01 (using entries in the PDB archive December 27th 2023)
CCP4 : 9.0.003 (Gargrove)
Density-Fitness : 1.0.11
Ideal geometry (proteins) : Engh & Huber (2001)
Ideal geometry (DNA, RNA) : Parkinson et al. (1996)
Validation Pipeline (wwPDB-VP) : 2.40

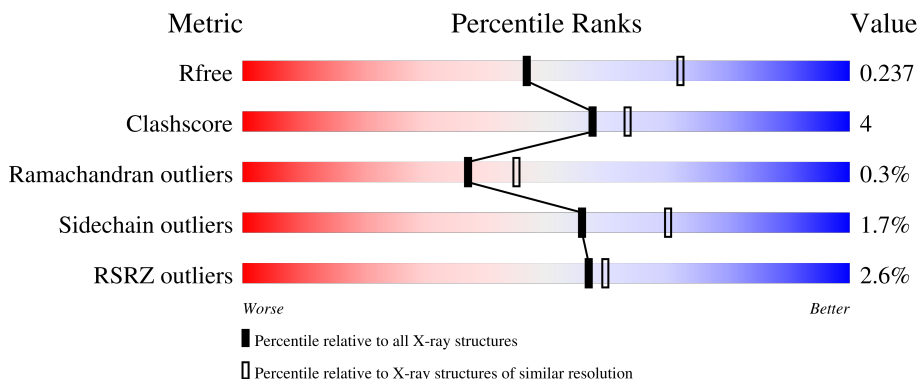
1 Overall quality at a glance

The following experimental techniques were used to determine the structure:

X-RAY DIFFRACTION

The reported resolution of this entry is 2.45 Å.

Percentile scores (ranging between 0-100) for global validation metrics of the entry are shown in the following graphic. The table shows the number of entries on which the scores are based.



Metric	Whole archive (#Entries)	Similar resolution (#Entries, resolution range(Å))
R_{free}	164625	1096 (2.46-2.46)
Clashscore	180529	1178 (2.46-2.46)
Ramachandran outliers	177936	1170 (2.46-2.46)
Sidechain outliers	177891	1170 (2.46-2.46)
RSRZ outliers	164620	1096 (2.46-2.46)

The table below summarises the geometric issues observed across the polymeric chains and their fit to the electron density. The red, orange, yellow and green segments of the lower bar indicate the fraction of residues that contain outliers for ≥ 3 , 2, 1 and 0 types of geometric quality criteria respectively. A grey segment represents the fraction of residues that are not modelled. The numeric value for each fraction is indicated below the corresponding segment, with a dot representing fractions $\leq 5\%$. The upper red bar (where present) indicates the fraction of residues that have poor fit to the electron density. The numeric value is given above the bar.

Mol	Chain	Length	Quality of chain
1	A	449	

2 Entry composition [i](#)

There are 8 unique types of molecules in this entry. The entry contains 3475 atoms, of which 0 are hydrogens and 0 are deuteriums.

In the tables below, the ZeroOcc column contains the number of atoms modelled with zero occupancy, the AltConf column contains the number of residues with at least one atom in alternate conformation and the Trace column contains the number of residues modelled with at most 2 atoms.

- Molecule 1 is a protein called Adenosine receptor A2a,Soluble cytochrome b562.

Mol	Chain	Residues	Atoms					ZeroOcc	AltConf	Trace
			Total	C	N	O	S			
1	A	389	3028	1981	497	527	23	3	18	0

There are 48 discrepancies between the modelled and reference sequences:

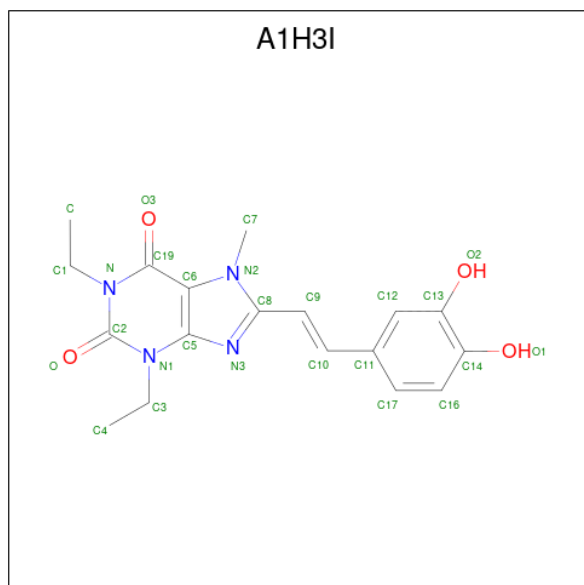
Chain	Residue	Modelled	Actual	Comment	Reference
A	-24	MET	-	initiating methionine	UNP P29274
A	-23	LYS	-	expression tag	UNP P29274
A	-22	THR	-	expression tag	UNP P29274
A	-21	ILE	-	expression tag	UNP P29274
A	-20	ILE	-	expression tag	UNP P29274
A	-19	ALA	-	expression tag	UNP P29274
A	-18	LEU	-	expression tag	UNP P29274
A	-17	SER	-	expression tag	UNP P29274
A	-16	TYR	-	expression tag	UNP P29274
A	-15	ILE	-	expression tag	UNP P29274
A	-14	PHE	-	expression tag	UNP P29274
A	-13	CYS	-	expression tag	UNP P29274
A	-12	LEU	-	expression tag	UNP P29274
A	-11	VAL	-	expression tag	UNP P29274
A	-10	PHE	-	expression tag	UNP P29274
A	-9	ALA	-	expression tag	UNP P29274
A	-8	ASP	-	expression tag	UNP P29274
A	-7	TYR	-	expression tag	UNP P29274
A	-6	LYS	-	expression tag	UNP P29274
A	-5	ASP	-	expression tag	UNP P29274
A	-4	ASP	-	expression tag	UNP P29274
A	-3	ASP	-	expression tag	UNP P29274
A	-2	ASP	-	expression tag	UNP P29274
A	-1	GLY	-	expression tag	UNP P29274
A	0	ALA	-	expression tag	UNP P29274
A	1	PRO	-	expression tag	UNP P29274
A	54	LEU	ALA	conflict	UNP P29274

Continued on next page...

Continued from previous page...

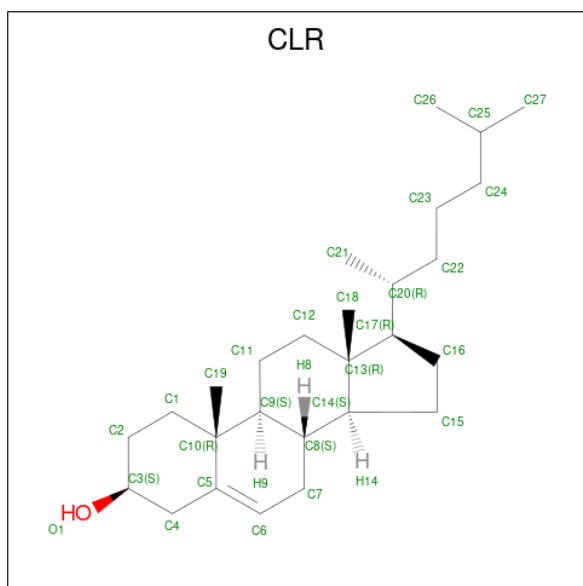
Chain	Residue	Modelled	Actual	Comment	Reference
A	88	ALA	THR	conflict	UNP P29274
A	107	ALA	ARG	conflict	UNP P29274
A	122	ALA	LYS	conflict	UNP P29274
A	154	ALA	ASN	conflict	UNP P29274
A	202	ALA	LEU	conflict	UNP P29274
A	1007	TRP	MET	conflict	UNP P0ABE7
A	1102	ILE	HIS	conflict	UNP P0ABE7
A	1106	LEU	-	linker	UNP P0ABE7
A	235	ALA	LEU	conflict	UNP P29274
A	239	ALA	VAL	conflict	UNP P29274
A	318	ALA	-	expression tag	UNP P29274
A	319	HIS	-	expression tag	UNP P29274
A	320	HIS	-	expression tag	UNP P29274
A	321	HIS	-	expression tag	UNP P29274
A	322	HIS	-	expression tag	UNP P29274
A	323	HIS	-	expression tag	UNP P29274
A	324	HIS	-	expression tag	UNP P29274
A	325	HIS	-	expression tag	UNP P29274
A	326	HIS	-	expression tag	UNP P29274
A	327	HIS	-	expression tag	UNP P29274
A	328	HIS	-	expression tag	UNP P29274

- Molecule 2 is 8-[(E)-2-[3,4-bis(oxidanyl)phenyl]ethenyl]-1,3-diethyl-7-methyl-purine-2,6-dione (three-letter code: A1H3I) (formula: C₁₈H₂₀N₄O₄) (labeled as "Ligand of Interest" by depositor).



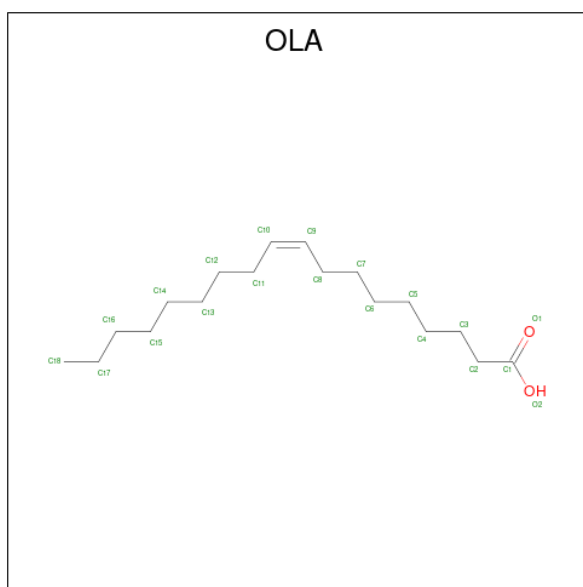
Mol	Chain	Residues	Atoms				ZeroOcc	AltConf
			Total	C	N	O		
2	A	1	26	18	4	4	0	0

- Molecule 3 is CHOLESTEROL (three-letter code: CLR) (formula: $C_{27}H_{46}O$).



Mol	Chain	Residues	Atoms			ZeroOcc	AltConf
			Total	C	O		
3	A	1	28	27	1	0	0
3	A	1	28	27	1	0	0
3	A	1	28	27	1	0	0

- Molecule 4 is OLEIC ACID (three-letter code: OLA) (formula: $C_{18}H_{34}O_2$).



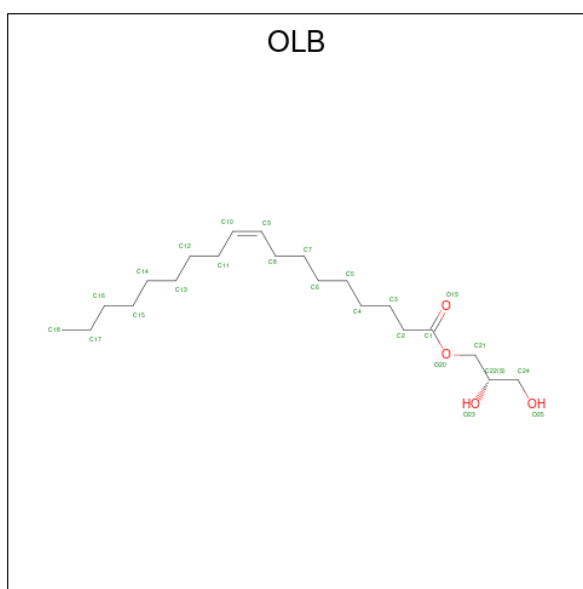
Mol	Chain	Residues	Atoms	ZeroOcc	AltConf
4	A	1	Total C O 20 18 2	0	0
4	A	1	Total C O 15 13 2	0	0
4	A	1	Total C 7 7	0	0
4	A	1	Total C O 9 7 2	0	0
4	A	1	Total C O 18 16 2	0	0
4	A	1	Total C O 15 13 2	0	0
4	A	1	Total C 8 8	0	0
4	A	1	Total C O 8 6 2	0	0
4	A	1	Total C 7 7	0	0
4	A	1	Total C O 19 17 2	0	0
4	A	1	Total C 10 10	0	0
4	A	1	Total C 7 7	0	0
4	A	1	Total C O 17 15 2	0	0
4	A	1	Total C O 11 9 2	0	0

Continued on next page...

Continued from previous page...

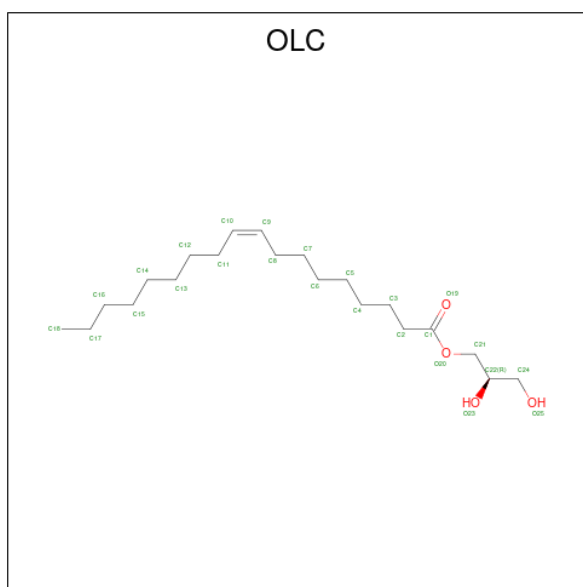
Mol	Chain	Residues	Atoms	ZeroOcc	AltConf
4	A	1	Total C 13 13	0	0
4	A	1	Total C O 17 15 2	0	0
4	A	1	Total C O 12 10 2	0	0
4	A	1	Total C 10 10	0	0
4	A	1	Total C O 17 15 2	0	0
4	A	1	Total C O 10 8 2	0	0
4	A	1	Total C 7 7	0	0
4	A	1	Total C O 13 11 2	0	0

- Molecule 5 is (2S)-2,3-dihydroxypropyl (9Z)-octadec-9-enoate (three-letter code: OLB) (formula: C₂₁H₄₀O₄).



Mol	Chain	Residues	Atoms	ZeroOcc	AltConf
5	A	1	Total C O 19 15 4	0	0

- Molecule 6 is (2R)-2,3-dihydroxypropyl (9Z)-octadec-9-enoate (three-letter code: OLC) (formula: C₂₁H₄₀O₄).



Mol	Chain	Residues	Atoms		ZeroOcc	AltConf
6	A	1	Total	C O	0	0
			19	15 4		

- Molecule 7 is SODIUM ION (three-letter code: NA) (formula: Na).

Mol	Chain	Residues	Atoms		ZeroOcc	AltConf
7	A	1	Total	Na	0	0
			1	1		

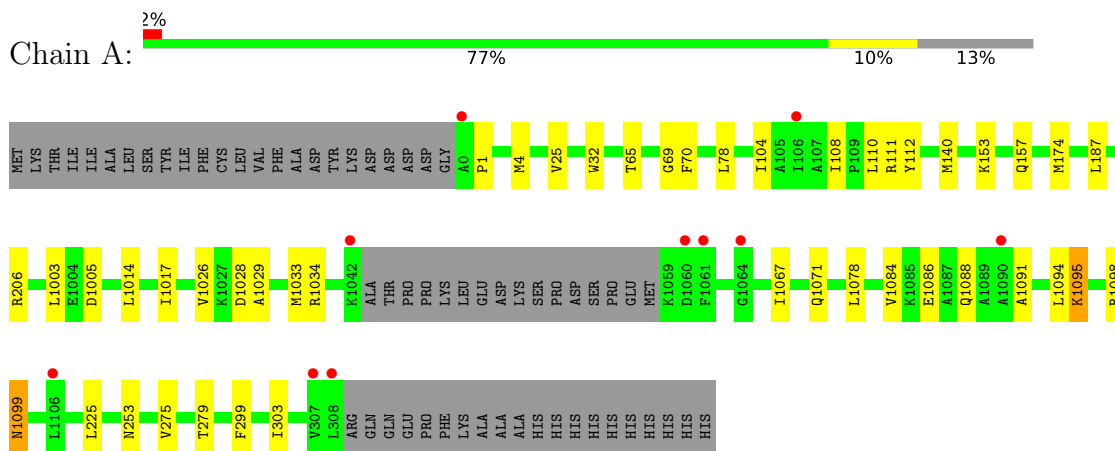
- Molecule 8 is water.

Mol	Chain	Residues	Atoms		ZeroOcc	AltConf
8	A	28	Total	O	0	0
			28	28		

3 Residue-property plots [i](#)

These plots are drawn for all protein, RNA, DNA and oligosaccharide chains in the entry. The first graphic for a chain summarises the proportions of the various outlier classes displayed in the second graphic. The second graphic shows the sequence view annotated by issues in geometry and electron density. Residues are color-coded according to the number of geometric quality criteria for which they contain at least one outlier: green = 0, yellow = 1, orange = 2 and red = 3 or more. A red dot above a residue indicates a poor fit to the electron density ($RSRZ > 2$). Stretches of 2 or more consecutive residues without any outlier are shown as a green connector. Residues present in the sample, but not in the model, are shown in grey.

- Molecule 1: Adenosine receptor A2a,Soluble cytochrome b562



4 Data and refinement statistics

Property	Value	Source
Space group	C 2 2 21	Depositor
Cell constants a, b, c, α , β , γ	40.55Å 182.54Å 143.66Å 90.00° 90.00° 90.00°	Depositor
Resolution (Å)	45.64 – 2.45 45.64 – 2.45	Depositor EDS
% Data completeness (in resolution range)	99.5 (45.64-2.45) 99.4 (45.64-2.45)	Depositor EDS
R_{merge}	(Not available)	Depositor
R_{sym}	(Not available)	Depositor
$\langle I/\sigma(I) \rangle$ ¹	1.05 (at 2.45Å)	Xtrriage
Refinement program	PHENIX (1.20_4459: ???)	Depositor
R, R_{free}	0.191 , 0.241 0.190 , 0.237	Depositor DCC
R_{free} test set	18227 reflections (9.94%)	wwPDB-VP
Wilson B-factor (Å ²)	61.8	Xtrriage
Anisotropy	0.055	Xtrriage
Bulk solvent k_{sol} (e/Å ³), B_{sol} (Å ²)	0.32 , 95.6	EDS
L-test for twinning ²	$\langle L \rangle = 0.49$, $\langle L^2 \rangle = 0.33$	Xtrriage
Estimated twinning fraction	No twinning to report.	Xtrriage
F_o, F_c correlation	0.96	EDS
Total number of atoms	3475	wwPDB-VP
Average B, all atoms (Å ²)	73.0	wwPDB-VP

Xtrriage's analysis on translational NCS is as follows: *The largest off-origin peak in the Patterson function is 5.81% of the height of the origin peak. No significant pseudotranslation is detected.*

¹Intensities estimated from amplitudes.

²Theoretical values of $\langle |L| \rangle$, $\langle L^2 \rangle$ for acentric reflections are 0.5, 0.333 respectively for untwinned datasets, and 0.375, 0.2 for perfectly twinned datasets.

5 Model quality [i](#)

5.1 Standard geometry [i](#)

Bond lengths and bond angles in the following residue types are not validated in this section: A1H3I, OLA, CLR, NA, OLC, OLB

The Z score for a bond length (or angle) is the number of standard deviations the observed value is removed from the expected value. A bond length (or angle) with $|Z| > 5$ is considered an outlier worth inspection. RMSZ is the root-mean-square of all Z scores of the bond lengths (or angles).

Mol	Chain	Bond lengths		Bond angles	
		RMSZ	# Z >5	RMSZ	# Z >5
1	A	0.26	0/3096	0.43	0/4232

There are no bond length outliers.

There are no bond angle outliers.

There are no chirality outliers.

There are no planarity outliers.

5.2 Too-close contacts [i](#)

In the following table, the Non-H and H(model) columns list the number of non-hydrogen atoms and hydrogen atoms in the chain respectively. The H(added) column lists the number of hydrogen atoms added and optimized by MolProbity. The Clashes column lists the number of clashes within the asymmetric unit, whereas Symm-Clashes lists symmetry-related clashes.

Mol	Chain	Non-H	H(model)	H(added)	Clashes	Symm-Clashes
1	A	3028	0	3017	26	0
2	A	26	0	0	0	0
3	A	84	0	138	1	0
4	A	270	0	385	7	0
5	A	19	0	25	0	0
6	A	19	0	25	1	0
7	A	1	0	0	0	0
8	A	28	0	0	0	0
All	All	3475	0	3590	31	0

The all-atom clashscore is defined as the number of clashes found per 1000 atoms (including hydrogen atoms). The all-atom clashscore for this structure is 4.

All (31) close contacts within the same asymmetric unit are listed below, sorted by their clash

magnitude.

Atom-1	Atom-2	Interatomic distance (Å)	Clash overlap (Å)
1:A:1078:LEU:HD13	1:A:1086:GLU:HB3	1.79	0.65
1:A:1029:ALA:O	1:A:1033:MET:HG3	2.02	0.59
1:A:25:VAL:HG22	4:A:1214:OLA:H132	1.85	0.57
1:A:108:ILE:HD12	1:A:108:ILE:O	2.06	0.56
1:A:299:PHE:O	1:A:303:ILE:HD12	2.06	0.55
1:A:32:TRP:CE2	4:A:1214:OLA:H62	2.45	0.52
4:A:1214:OLA:H141	4:A:1228:OLA:H9	1.92	0.52
1:A:1067:ILE:O	1:A:1071:GLN:HG3	2.11	0.51
1:A:104:ILE:HG22	1:A:112:TYR:HD1	1.75	0.50
1:A:69:GLY:O	1:A:157[B]:GLN:NE2	2.44	0.49
1:A:110:LEU:HD12	1:A:111:ARG:N	2.28	0.48
1:A:65:THR:HG22	1:A:70:PHE:CE1	2.49	0.48
3:A:1202:CLR:H6	4:A:1226:OLA:O1	2.15	0.47
1:A:1095:LYS:O	1:A:1098:ARG:N	2.46	0.46
4:A:1209:OLA:H71	4:A:1209:OLA:H42	1.72	0.46
4:A:1226:OLA:H72	4:A:1226:OLA:H41	1.66	0.44
4:A:1219:OLA:H81	6:A:1224:OLC:H8A	1.99	0.44
1:A:1014:LEU:HD23	1:A:1014:LEU:HA	1.82	0.44
1:A:1017:ILE:HD13	1:A:1026:VAL:HA	1.99	0.44
1:A:187[B]:LEU:HD23	1:A:187[B]:LEU:HA	1.87	0.44
1:A:1:PRO:HB2	1:A:4:MET:HG3	1.99	0.43
1:A:1003:LEU:HD12	1:A:1003:LEU:HA	1.88	0.43
1:A:225:LEU:HD12	1:A:225:LEU:HA	1.79	0.43
1:A:1084:VAL:O	1:A:1088:GLN:HG3	2.19	0.43
1:A:78[B]:LEU:HB3	1:A:140[B]:MET:SD	2.59	0.42
1:A:110:LEU:HD12	1:A:111:ARG:H	1.83	0.42
1:A:174[B]:MET:HE1	1:A:253:ASN:HB3	2.01	0.42
1:A:275[B]:VAL:O	1:A:279[B]:THR:HG23	2.21	0.41
1:A:206:ARG:HE	1:A:206:ARG:HB3	1.54	0.40
1:A:1091:ALA:O	1:A:1094:LEU:HB2	2.20	0.40
1:A:1098:ARG:HG3	1:A:1099:ASN:N	2.36	0.40

There are no symmetry-related clashes.

5.3 Torsion angles [i](#)

5.3.1 Protein backbone [i](#)

In the following table, the Percentiles column shows the percent Ramachandran outliers of the chain as a percentile score with respect to all X-ray entries followed by that with respect to entries

of similar resolution.

The Analysed column shows the number of residues for which the backbone conformation was analysed, and the total number of residues.

Mol	Chain	Analysed	Favoured	Allowed	Outliers	Percentiles
1	A	403/449 (90%)	397 (98%)	5 (1%)	1 (0%)	44 54

All (1) Ramachandran outliers are listed below:

Mol	Chain	Res	Type
1	A	1095	LYS

5.3.2 Protein sidechains [i](#)

In the following table, the Percentiles column shows the percent sidechain outliers of the chain as a percentile score with respect to all X-ray entries followed by that with respect to entries of similar resolution.

The Analysed column shows the number of residues for which the sidechain conformation was analysed, and the total number of residues.

Mol	Chain	Analysed	Rotameric	Outliers	Percentiles
1	A	306/368 (83%)	301 (98%)	5 (2%)	58 72

All (5) residues with a non-rotameric sidechain are listed below:

Mol	Chain	Res	Type
1	A	153	LYS
1	A	1005	ASP
1	A	1028	ASP
1	A	1034	ARG
1	A	1099	ASN

Sometimes sidechains can be flipped to improve hydrogen bonding and reduce clashes. All (1) such sidechains are listed below:

Mol	Chain	Res	Type
1	A	1006	ASN

5.3.3 RNA [i](#)

There are no RNA molecules in this entry.

5.4 Non-standard residues in protein, DNA, RNA chains [i](#)

There are no non-standard protein/DNA/RNA residues in this entry.

5.5 Carbohydrates [i](#)

There are no oligosaccharides in this entry.

5.6 Ligand geometry [i](#)

Of 29 ligands modelled in this entry, 1 is monoatomic - leaving 28 for Mogul analysis.

In the following table, the Counts columns list the number of bonds (or angles) for which Mogul statistics could be retrieved, the number of bonds (or angles) that are observed in the model and the number of bonds (or angles) that are defined in the Chemical Component Dictionary. The Link column lists molecule types, if any, to which the group is linked. The Z score for a bond length (or angle) is the number of standard deviations the observed value is removed from the expected value. A bond length (or angle) with $|Z| > 2$ is considered an outlier worth inspection. RMSZ is the root-mean-square of all Z scores of the bond lengths (or angles).

Mol	Type	Chain	Res	Link	Bond lengths			Bond angles		
					Counts	RMSZ	# Z > 2	Counts	RMSZ	# Z > 2
4	OLA	A	1214	-	18,18,19	0.81	1 (5%)	18,18,19	0.94	1 (5%)
4	OLA	A	1217	-	16,16,19	0.90	1 (6%)	16,16,19	0.90	0
4	OLA	A	1220	-	16,16,19	0.84	1 (6%)	16,16,19	0.98	1 (6%)
4	OLA	A	1208	-	8,8,19	0.68	0	8,8,19	1.27	1 (12%)
3	CLR	A	1204	-	31,31,31	0.38	0	48,48,48	0.54	0
3	CLR	A	1203	-	31,31,31	0.37	0	48,48,48	0.55	0
4	OLA	A	1221	-	11,11,19	1.06	1 (9%)	11,11,19	1.08	0
4	OLA	A	1206	-	14,14,19	0.90	1 (7%)	14,14,19	1.08	2 (14%)
4	OLA	A	1227	-	6,6,19	0.29	0	5,5,19	0.44	0
4	OLA	A	1209	-	17,17,19	0.82	1 (5%)	17,17,19	0.99	0
3	CLR	A	1202	-	31,31,31	0.37	0	48,48,48	0.48	0
4	OLA	A	1225	-	16,16,19	0.83	1 (6%)	16,16,19	1.05	1 (6%)
4	OLA	A	1226	-	9,9,19	0.68	0	9,9,19	1.12	1 (11%)
4	OLA	A	1213	-	6,6,19	0.26	0	5,5,19	0.45	0
6	OLC	A	1224	-	18,18,24	1.14	1 (5%)	18,19,25	1.38	2 (11%)
4	OLA	A	1207	-	6,6,19	0.26	0	5,5,19	0.45	0
4	OLA	A	1218	-	10,10,19	0.62	0	10,10,19	1.12	1 (10%)
4	OLA	A	1205	-	19,19,19	0.80	1 (5%)	19,19,19	0.92	2 (10%)
4	OLA	A	1222	-	9,9,19	0.96	1 (11%)	8,8,19	0.69	0

Mol	Type	Chain	Res	Link	Bond lengths			Bond angles		
					Counts	RMSZ	# Z > 2	Counts	RMSZ	# Z > 2
4	OLA	A	1215	-	9,9,19	0.97	1 (11%)	8,8,19	0.73	0
4	OLA	A	1219	-	12,12,19	0.83	1 (8%)	11,11,19	0.55	0
5	OLB	A	1223	-	18,18,24	0.39	0	18,19,25	0.46	0
4	OLA	A	1211	-	7,7,19	0.25	0	6,6,19	0.67	0
4	OLA	A	1216	-	6,6,19	0.25	0	5,5,19	0.49	0
4	OLA	A	1212	-	7,7,19	0.75	0	7,7,19	1.34	2 (28%)
4	OLA	A	1210	-	14,14,19	0.90	1 (7%)	14,14,19	1.04	1 (7%)
2	A1H3I	A	1201	-	25,28,28	0.57	0	29,41,41	1.28	3 (10%)
4	OLA	A	1228	-	12,12,19	0.91	1 (8%)	12,12,19	1.21	2 (16%)

In the following table, the Chirals column lists the number of chiral outliers, the number of chiral centers analysed, the number of these observed in the model and the number defined in the Chemical Component Dictionary. Similar counts are reported in the Torsion and Rings columns. '-' means no outliers of that kind were identified.

Mol	Type	Chain	Res	Link	Chirals	Torsions	Rings
4	OLA	A	1214	-	-	8/16/16/17	-
4	OLA	A	1217	-	-	12/14/14/17	-
4	OLA	A	1220	-	-	7/14/14/17	-
4	OLA	A	1208	-	-	2/6/6/17	-
3	CLR	A	1204	-	-	3/10/68/68	0/4/4/4
3	CLR	A	1203	-	-	0/10/68/68	0/4/4/4
4	OLA	A	1221	-	-	6/9/9/17	-
4	OLA	A	1206	-	-	8/12/12/17	-
4	OLA	A	1227	-	-	0/4/4/17	-
4	OLA	A	1209	-	-	8/15/15/17	-
3	CLR	A	1202	-	-	1/10/68/68	0/4/4/4
4	OLA	A	1225	-	-	9/14/14/17	-
4	OLA	A	1226	-	-	5/7/7/17	-
4	OLA	A	1213	-	-	3/4/4/17	-
6	OLC	A	1224	-	-	8/18/18/24	-
4	OLA	A	1207	-	-	1/4/4/17	-
4	OLA	A	1218	-	-	4/8/8/17	-
4	OLA	A	1205	-	-	9/17/17/17	-
4	OLA	A	1222	-	-	2/7/7/17	-
4	OLA	A	1215	-	-	4/7/7/17	-
4	OLA	A	1219	-	-	4/10/10/17	-

Continued on next page...

Continued from previous page...

Mol	Type	Chain	Res	Link	Chirals	Torsions	Rings
5	OLB	A	1223	-	-	2/18/18/24	-
4	OLA	A	1211	-	-	3/5/5/17	-
4	OLA	A	1216	-	-	2/4/4/17	-
4	OLA	A	1212	-	-	2/5/5/17	-
4	OLA	A	1210	-	-	5/12/12/17	-
2	A1H3I	A	1201	-	-	1/7/9/9	0/3/3/3
4	OLA	A	1228	-	-	6/10/10/17	-

All (14) bond length outliers are listed below:

Mol	Chain	Res	Type	Atoms	Z	Observed(Å)	Ideal(Å)
6	A	1224	OLC	O20-C1	3.00	1.42	1.33
4	A	1221	OLA	C10-C9	2.83	1.47	1.28
4	A	1215	OLA	C9-C10	2.82	1.47	1.28
4	A	1222	OLA	C9-C10	2.79	1.47	1.28
4	A	1217	OLA	C10-C9	2.78	1.47	1.31
4	A	1219	OLA	C10-C9	2.74	1.47	1.31
4	A	1205	OLA	C10-C9	2.71	1.47	1.31
4	A	1214	OLA	C10-C9	2.71	1.47	1.31
4	A	1220	OLA	C10-C9	2.71	1.47	1.31
4	A	1210	OLA	C10-C9	2.70	1.47	1.31
4	A	1209	OLA	C10-C9	2.70	1.47	1.31
4	A	1206	OLA	C10-C9	2.69	1.47	1.31
4	A	1225	OLA	C10-C9	2.62	1.47	1.31
4	A	1228	OLA	C9-C10	2.42	1.47	1.29

All (20) bond angle outliers are listed below:

Mol	Chain	Res	Type	Atoms	Z	Observed(°)	Ideal(°)
6	A	1224	OLC	C8-C9-C10	3.68	152.97	124.73
2	A	1201	A1H3I	C6-N2-C8	-3.49	106.21	109.81
2	A	1201	A1H3I	C5-N1-C2	-3.39	119.03	122.22
6	A	1224	OLC	O20-C1-C2	2.70	120.39	111.91
2	A	1201	A1H3I	C7-N2-C6	2.35	127.07	124.49
4	A	1228	OLA	O2-C1-C2	2.27	121.34	114.03
4	A	1225	OLA	C3-C2-C1	-2.21	108.89	114.47
4	A	1218	OLA	O2-C1-C2	2.19	121.08	114.03
4	A	1214	OLA	C3-C2-C1	-2.13	109.10	114.47
4	A	1208	OLA	O2-C1-C2	2.11	120.81	114.03
4	A	1228	OLA	C3-C2-C1	-2.10	109.19	114.47
4	A	1226	OLA	O2-C1-C2	2.05	120.61	114.03

Continued on next page...

Continued from previous page...

Mol	Chain	Res	Type	Atoms	Z	Observed(°)	Ideal(°)
4	A	1212	OLA	C3-C2-C1	-2.05	109.31	114.47
4	A	1212	OLA	O2-C1-C2	2.03	120.55	114.03
4	A	1210	OLA	C3-C2-C1	-2.01	109.40	114.47
4	A	1206	OLA	O2-C1-C2	2.01	120.49	114.03
4	A	1206	OLA	C3-C2-C1	-2.01	109.40	114.47
4	A	1220	OLA	C3-C2-C1	-2.01	109.41	114.47
4	A	1205	OLA	O2-C1-C2	2.00	120.47	114.03
4	A	1205	OLA	C3-C2-C1	-2.00	109.43	114.47

There are no chirality outliers.

All (125) torsion outliers are listed below:

Mol	Chain	Res	Type	Atoms
4	A	1228	OLA	C11-C10-C9-C8
5	A	1223	OLB	O20-C21-C22-C24
6	A	1224	OLC	C9-C10-C11-C12
5	A	1223	OLB	O20-C21-C22-O23
4	A	1226	OLA	C4-C5-C6-C7
4	A	1205	OLA	C1-C2-C3-C4
4	A	1206	OLA	C1-C2-C3-C4
4	A	1208	OLA	C1-C2-C3-C4
4	A	1214	OLA	C1-C2-C3-C4
4	A	1220	OLA	C1-C2-C3-C4
4	A	1226	OLA	C1-C2-C3-C4
4	A	1209	OLA	C1-C2-C3-C4
4	A	1210	OLA	C1-C2-C3-C4
4	A	1221	OLA	C1-C2-C3-C4
4	A	1228	OLA	C1-C2-C3-C4
4	A	1205	OLA	C4-C5-C6-C7
4	A	1217	OLA	C2-C3-C4-C5
4	A	1214	OLA	C11-C12-C13-C14
4	A	1225	OLA	C5-C6-C7-C8
4	A	1225	OLA	C4-C5-C6-C7
4	A	1225	OLA	C1-C2-C3-C4
4	A	1210	OLA	C3-C4-C5-C6
4	A	1221	OLA	C3-C4-C5-C6
4	A	1221	OLA	C4-C5-C6-C7
4	A	1228	OLA	C2-C3-C4-C5
4	A	1220	OLA	C3-C4-C5-C6
4	A	1217	OLA	C1-C2-C3-C4
4	A	1217	OLA	C4-C5-C6-C7
4	A	1225	OLA	C3-C4-C5-C6

Continued on next page...

Continued from previous page...

Mol	Chain	Res	Type	Atoms
4	A	1214	OLA	C3-C4-C5-C6
4	A	1218	OLA	C3-C4-C5-C6
4	A	1210	OLA	C4-C5-C6-C7
4	A	1228	OLA	C4-C5-C6-C7
6	A	1224	OLC	C2-C1-O20-C21
4	A	1220	OLA	C4-C5-C6-C7
6	A	1224	OLC	C6-C7-C8-C9
4	A	1212	OLA	C1-C2-C3-C4
6	A	1224	OLC	O19-C1-O20-C21
4	A	1205	OLA	C3-C4-C5-C6
4	A	1213	OLA	C3-C4-C5-C6
4	A	1215	OLA	C11-C12-C13-C14
4	A	1222	OLA	C11-C12-C13-C14
4	A	1219	OLA	C11-C10-C9-C8
4	A	1220	OLA	C11-C10-C9-C8
4	A	1211	OLA	C14-C15-C16-C17
4	A	1226	OLA	C2-C3-C4-C5
4	A	1225	OLA	C11-C10-C9-C8
4	A	1207	OLA	C1-C2-C3-C4
4	A	1209	OLA	C6-C7-C8-C9
4	A	1205	OLA	C11-C10-C9-C8
4	A	1210	OLA	C11-C10-C9-C8
4	A	1214	OLA	C11-C10-C9-C8
4	A	1213	OLA	C1-C2-C3-C4
4	A	1206	OLA	C4-C5-C6-C7
4	A	1206	OLA	C3-C4-C5-C6
6	A	1224	OLC	C2-C3-C4-C5
4	A	1217	OLA	C11-C10-C9-C8
4	A	1225	OLA	C11-C12-C13-C14
6	A	1224	OLC	C1-C2-C3-C4
4	A	1205	OLA	C11-C12-C13-C14
3	A	1204	CLR	C22-C23-C24-C25
4	A	1209	OLA	C11-C12-C13-C14
4	A	1209	OLA	C2-C3-C4-C5
4	A	1211	OLA	C13-C14-C15-C16
4	A	1215	OLA	C12-C13-C14-C15
4	A	1219	OLA	C11-C12-C13-C14
4	A	1221	OLA	C2-C3-C4-C5
4	A	1215	OLA	C15-C16-C17-C18
4	A	1216	OLA	C4-C5-C6-C7
3	A	1204	CLR	C23-C24-C25-C27
4	A	1217	OLA	C12-C13-C14-C15

Continued on next page...

Continued from previous page...

Mol	Chain	Res	Type	Atoms
4	A	1206	OLA	C11-C10-C9-C8
4	A	1222	OLA	C9-C10-C11-C12
3	A	1202	CLR	C21-C20-C22-C23
4	A	1214	OLA	C10-C11-C12-C13
6	A	1224	OLC	C3-C4-C5-C6
4	A	1216	OLA	C3-C4-C5-C6
4	A	1213	OLA	C4-C5-C6-C7
4	A	1215	OLA	C9-C10-C11-C12
4	A	1217	OLA	C3-C4-C5-C6
4	A	1218	OLA	C4-C5-C6-C7
4	A	1220	OLA	C11-C12-C13-C14
4	A	1212	OLA	C3-C4-C5-C6
4	A	1225	OLA	C9-C10-C11-C12
4	A	1217	OLA	C5-C6-C7-C8
4	A	1206	OLA	C9-C10-C11-C12
4	A	1217	OLA	C11-C12-C13-C14
4	A	1209	OLA	C12-C13-C14-C15
4	A	1217	OLA	C7-C8-C9-C10
4	A	1219	OLA	C9-C10-C11-C12
4	A	1221	OLA	C7-C8-C9-C10
4	A	1221	OLA	C5-C6-C7-C8
4	A	1228	OLA	C3-C4-C5-C6
4	A	1220	OLA	C9-C10-C11-C12
4	A	1205	OLA	C9-C10-C11-C12
4	A	1218	OLA	O2-C1-C2-C3
4	A	1209	OLA	C9-C10-C11-C12
4	A	1218	OLA	O1-C1-C2-C3
4	A	1209	OLA	C3-C4-C5-C6
4	A	1214	OLA	C5-C6-C7-C8
4	A	1228	OLA	C7-C8-C9-C10
4	A	1226	OLA	O2-C1-C2-C3
4	A	1208	OLA	C4-C5-C6-C7
4	A	1210	OLA	C9-C10-C11-C12
4	A	1217	OLA	C9-C10-C11-C12
4	A	1211	OLA	C12-C13-C14-C15
4	A	1205	OLA	C7-C8-C9-C10
4	A	1214	OLA	C9-C10-C11-C12
4	A	1220	OLA	C7-C8-C9-C10
3	A	1204	CLR	C23-C24-C25-C26
4	A	1225	OLA	C7-C8-C9-C10
4	A	1209	OLA	C4-C5-C6-C7
6	A	1224	OLC	O20-C21-C22-O23

Continued on next page...

Continued from previous page...

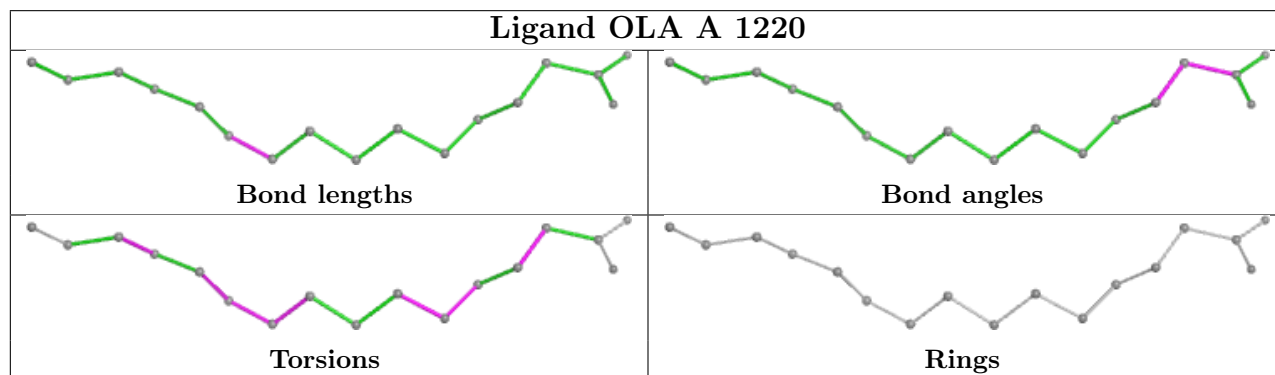
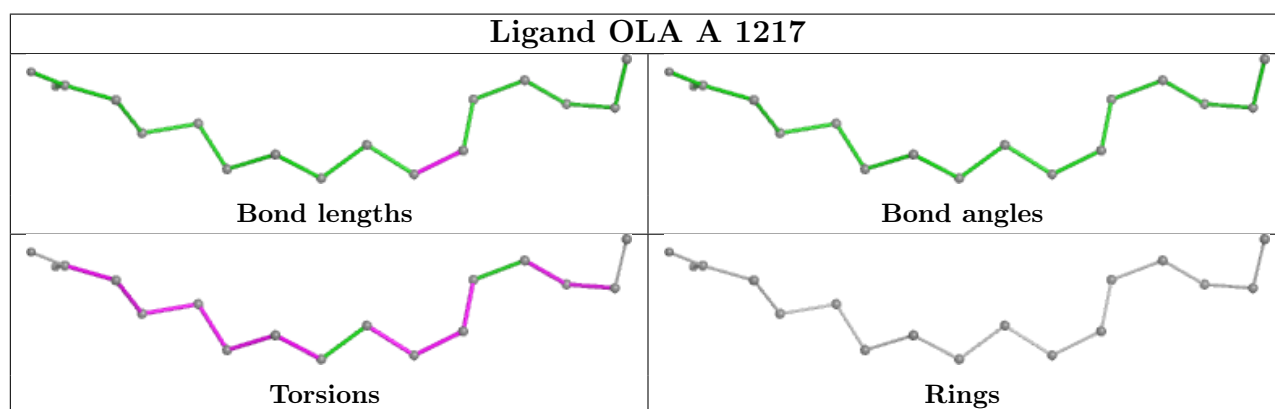
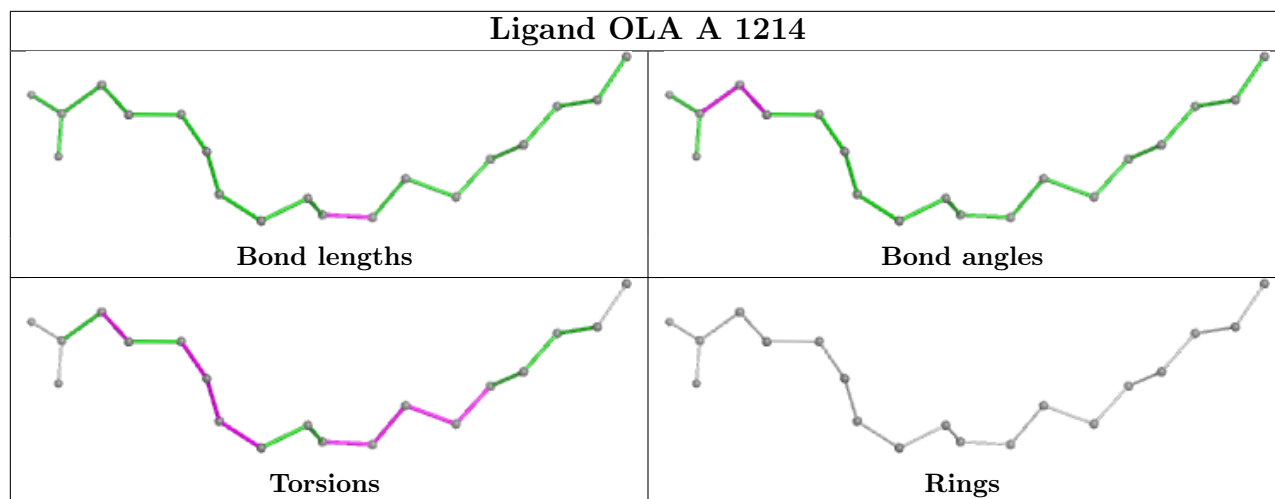
Mol	Chain	Res	Type	Atoms
4	A	1226	OLA	O1-C1-C2-C3
4	A	1205	OLA	O2-C1-C2-C3
4	A	1206	OLA	O2-C1-C2-C3
4	A	1225	OLA	O2-C1-C2-C3
4	A	1214	OLA	C4-C5-C6-C7
4	A	1219	OLA	C12-C13-C14-C15
2	A	1201	A1H3I	C4-C3-N1-C5
4	A	1206	OLA	O1-C1-C2-C3
4	A	1205	OLA	O1-C1-C2-C3
4	A	1217	OLA	O1-C1-C2-C3
4	A	1217	OLA	O2-C1-C2-C3
4	A	1206	OLA	C5-C6-C7-C8

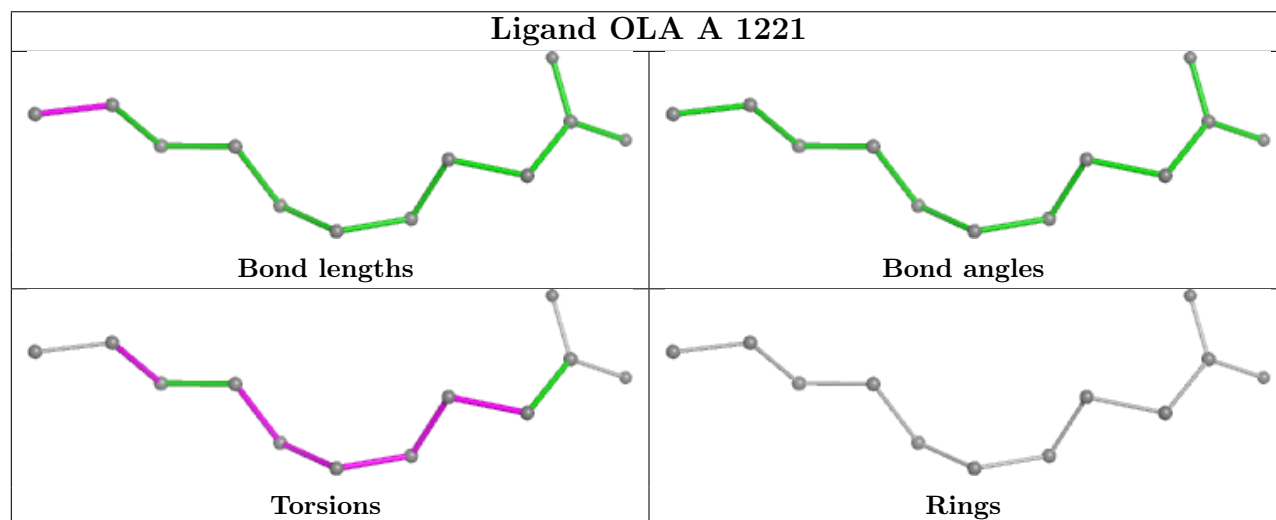
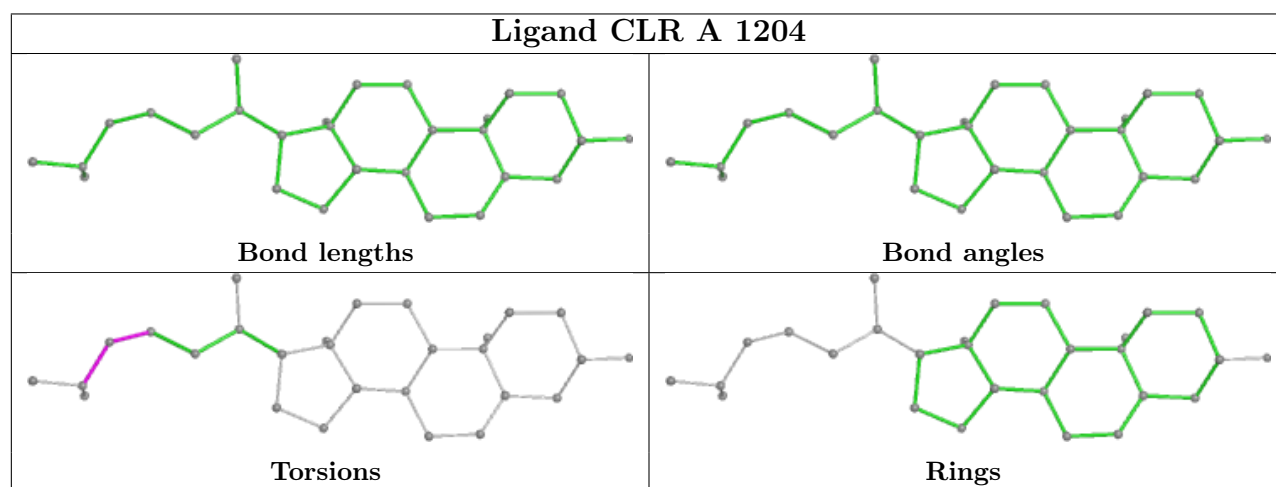
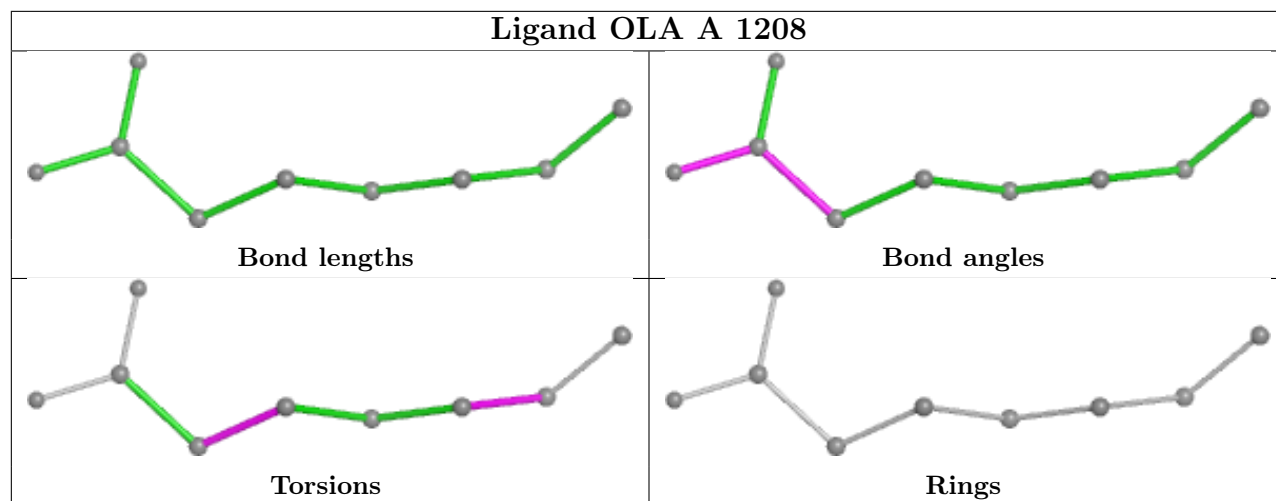
There are no ring outliers.

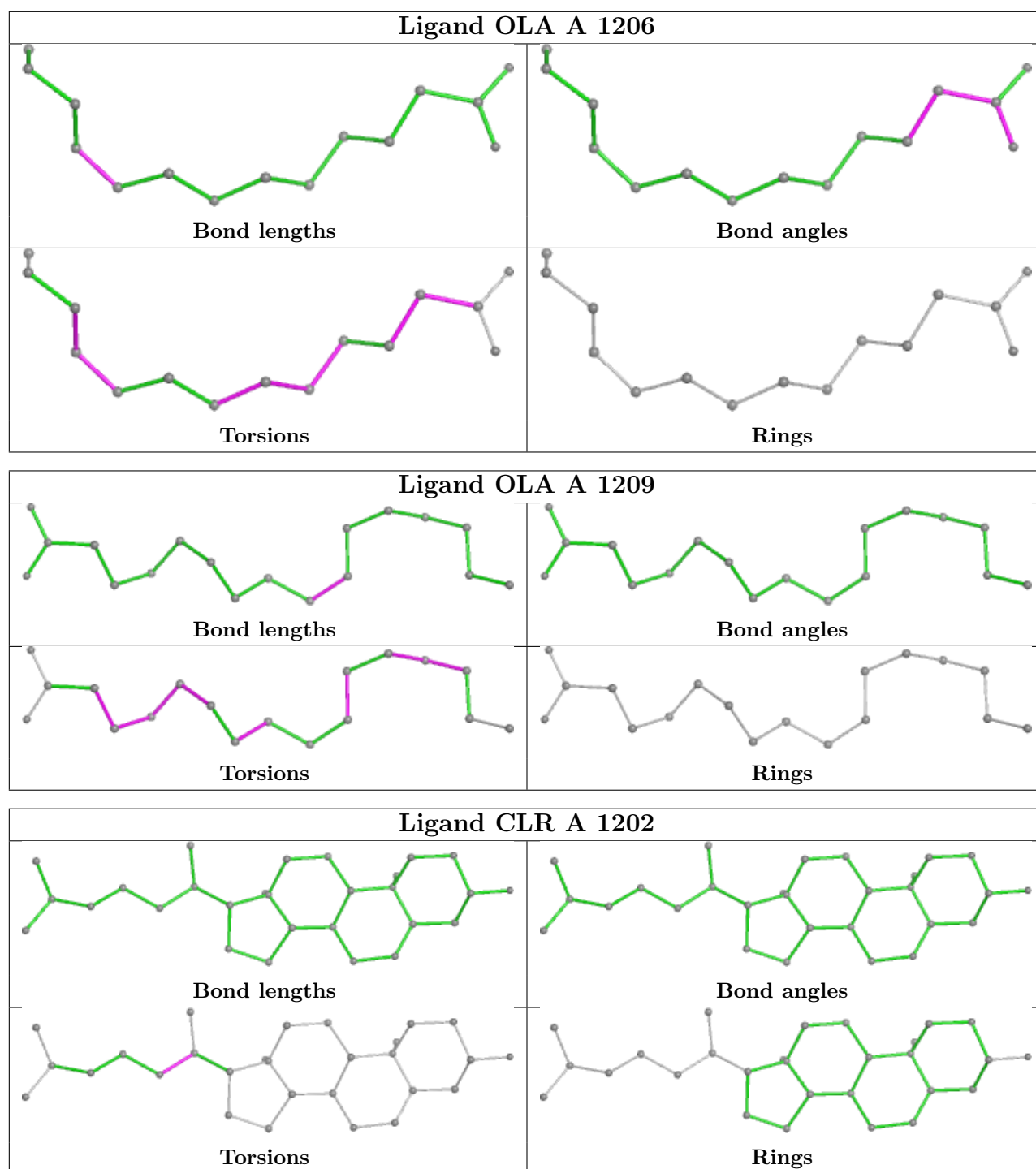
7 monomers are involved in 7 short contacts:

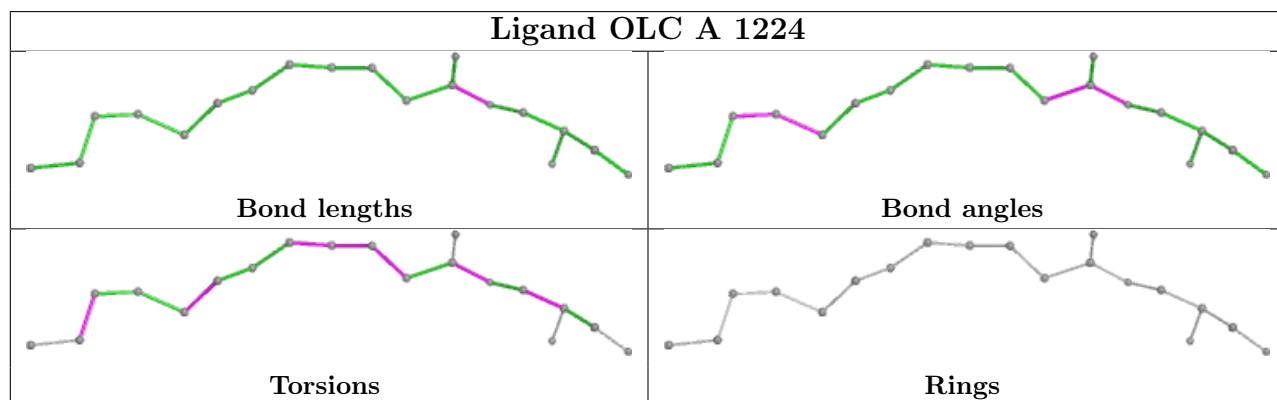
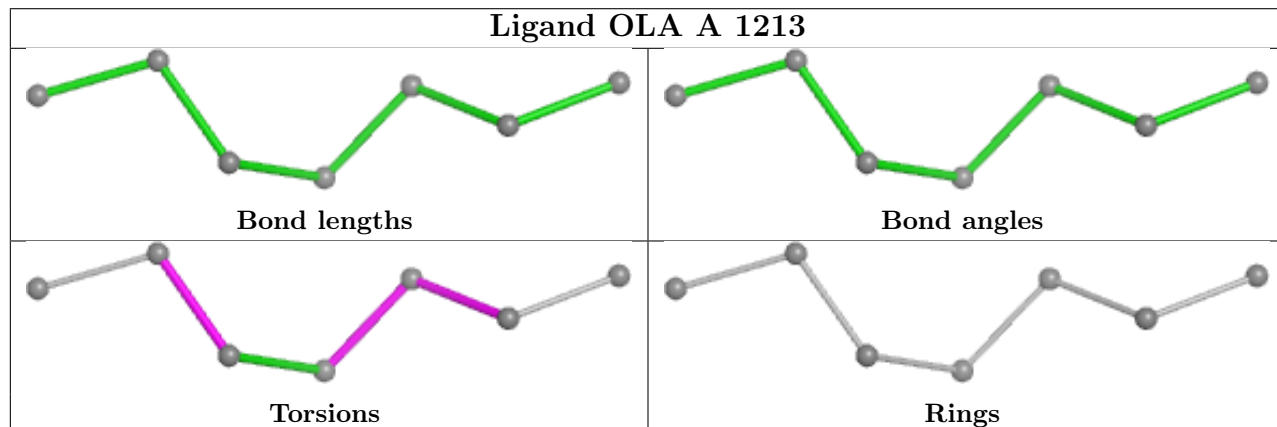
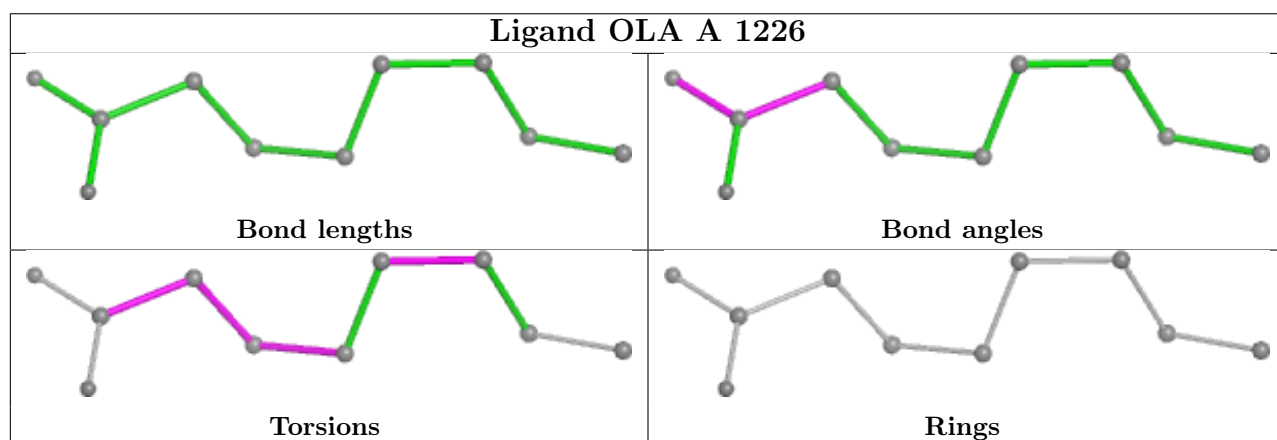
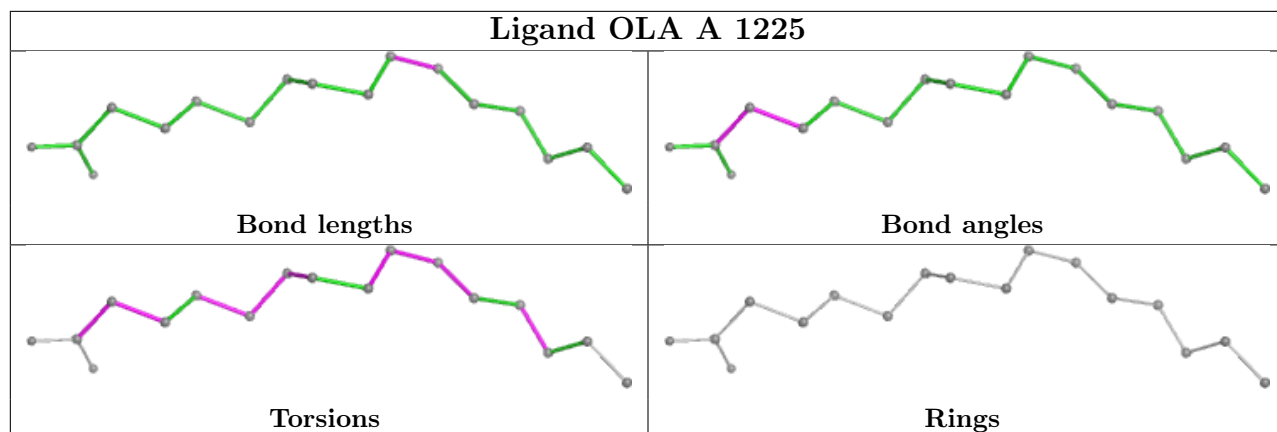
Mol	Chain	Res	Type	Clashes	Symm-Clashes
4	A	1214	OLA	3	0
4	A	1209	OLA	1	0
3	A	1202	CLR	1	0
4	A	1226	OLA	2	0
6	A	1224	OLC	1	0
4	A	1219	OLA	1	0
4	A	1228	OLA	1	0

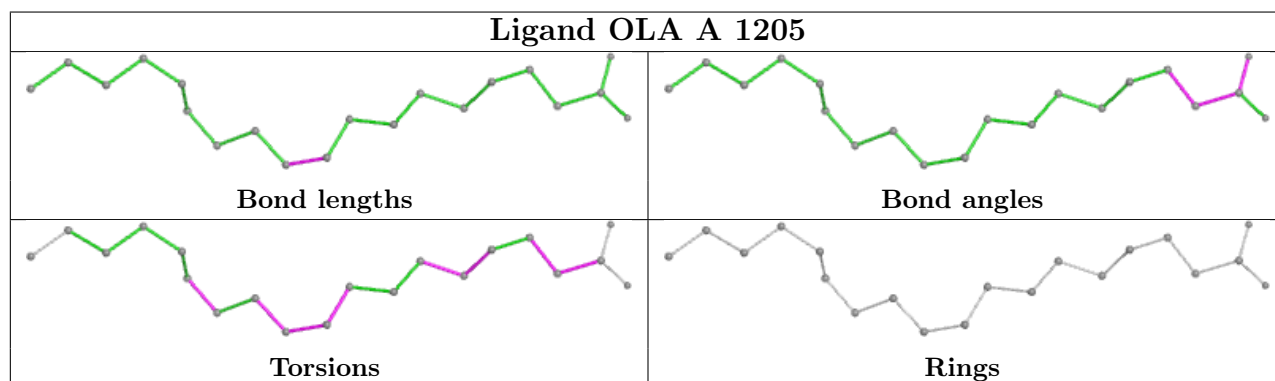
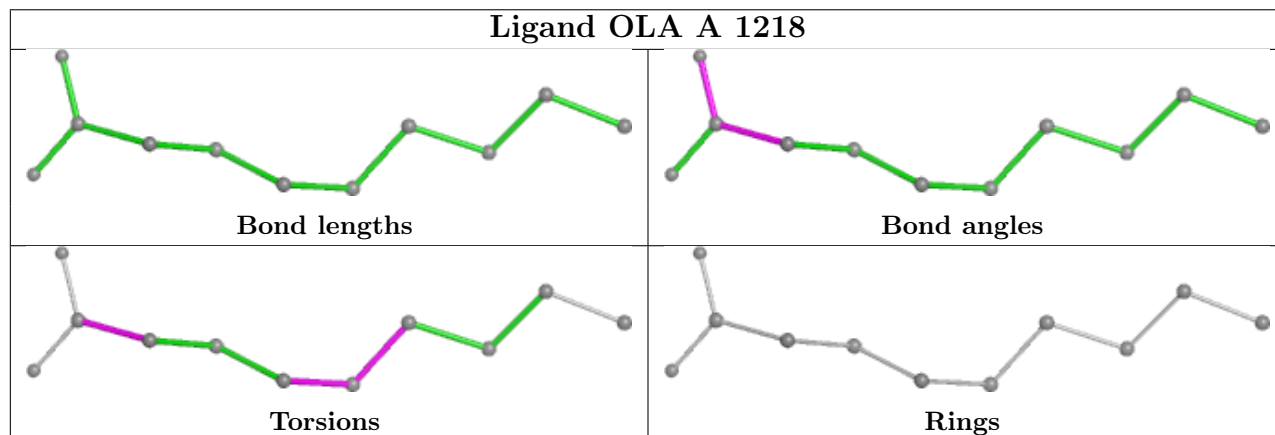
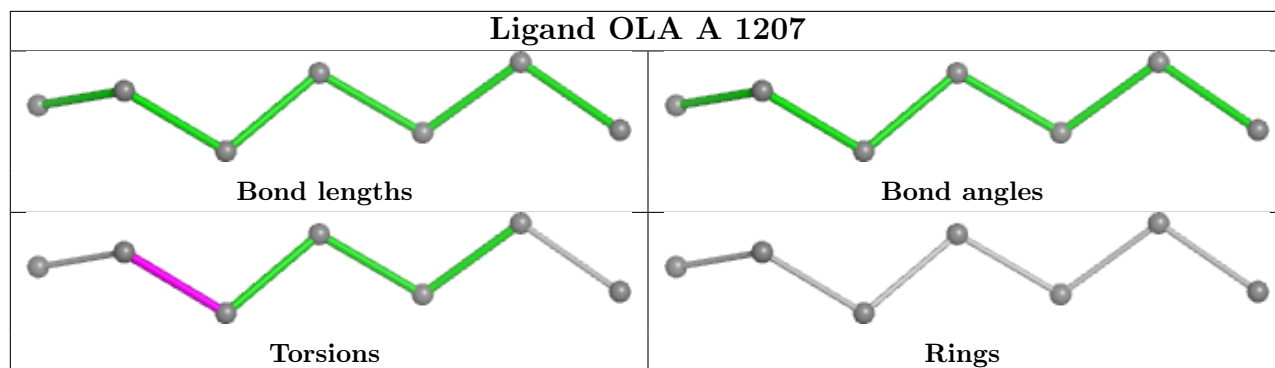
The following is a two-dimensional graphical depiction of Mogul quality analysis of bond lengths, bond angles, torsion angles, and ring geometry for all instances of the Ligand of Interest. In addition, ligands with molecular weight > 250 and outliers as shown on the validation Tables will also be included. For torsion angles, if less than 5% of the Mogul distribution of torsion angles is within 10 degrees of the torsion angle in question, then that torsion angle is considered an outlier. Any bond that is central to one or more torsion angles identified as an outlier by Mogul will be highlighted in the graph. For rings, the root-mean-square deviation (RMSD) between the ring in question and similar rings identified by Mogul is calculated over all ring torsion angles. If the average RMSD is greater than 60 degrees and the minimal RMSD between the ring in question and any Mogul-identified rings is also greater than 60 degrees, then that ring is considered an outlier. The outliers are highlighted in purple. The color gray indicates Mogul did not find sufficient equivalents in the CSD to analyse the geometry.

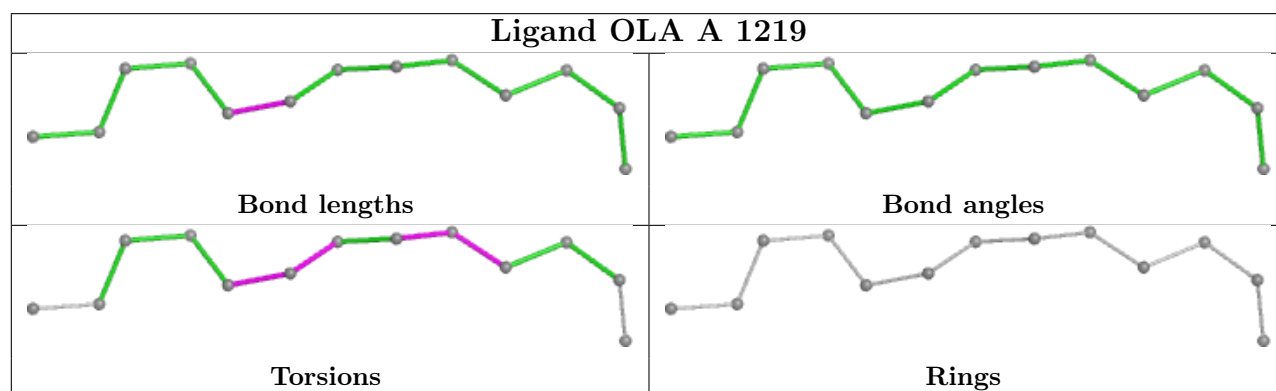
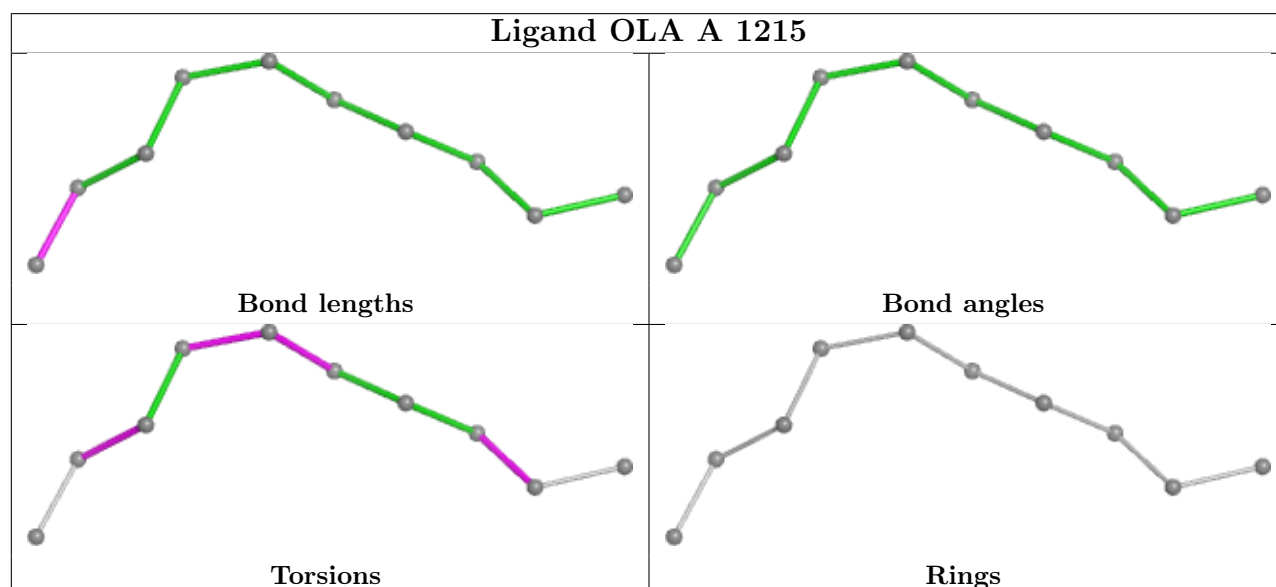
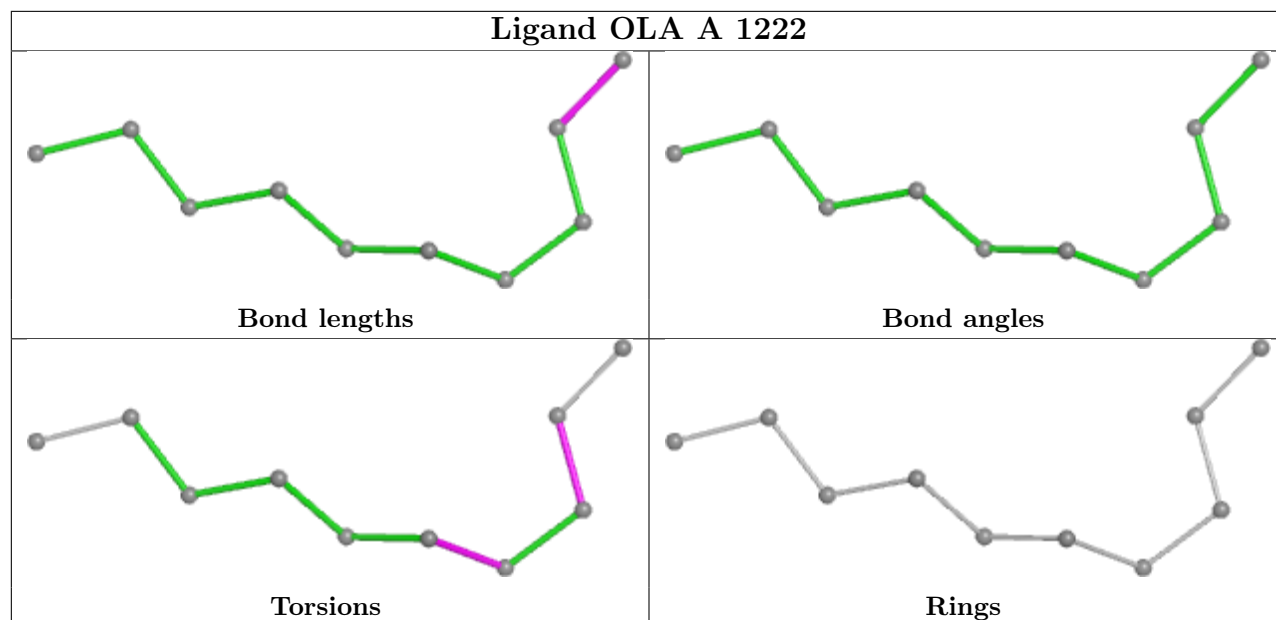


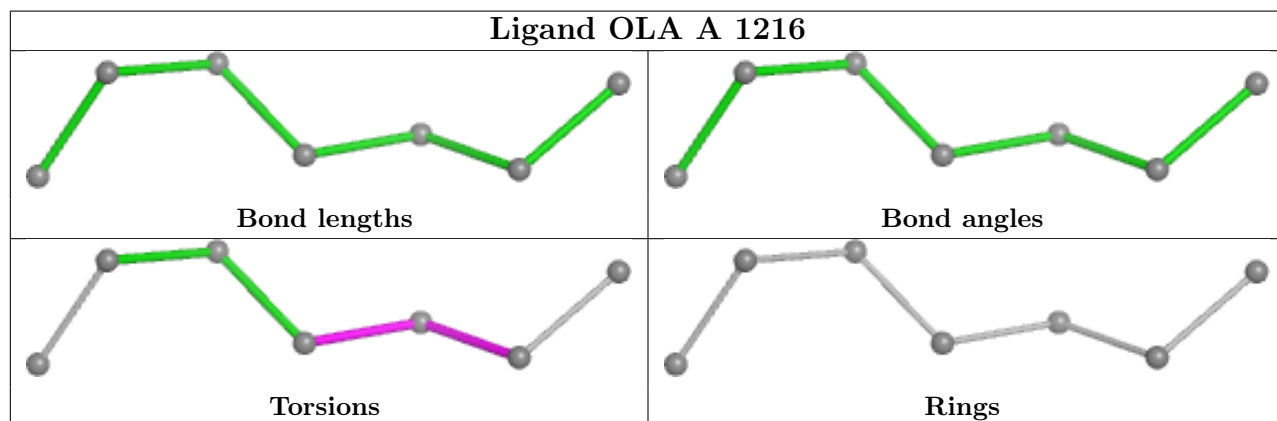
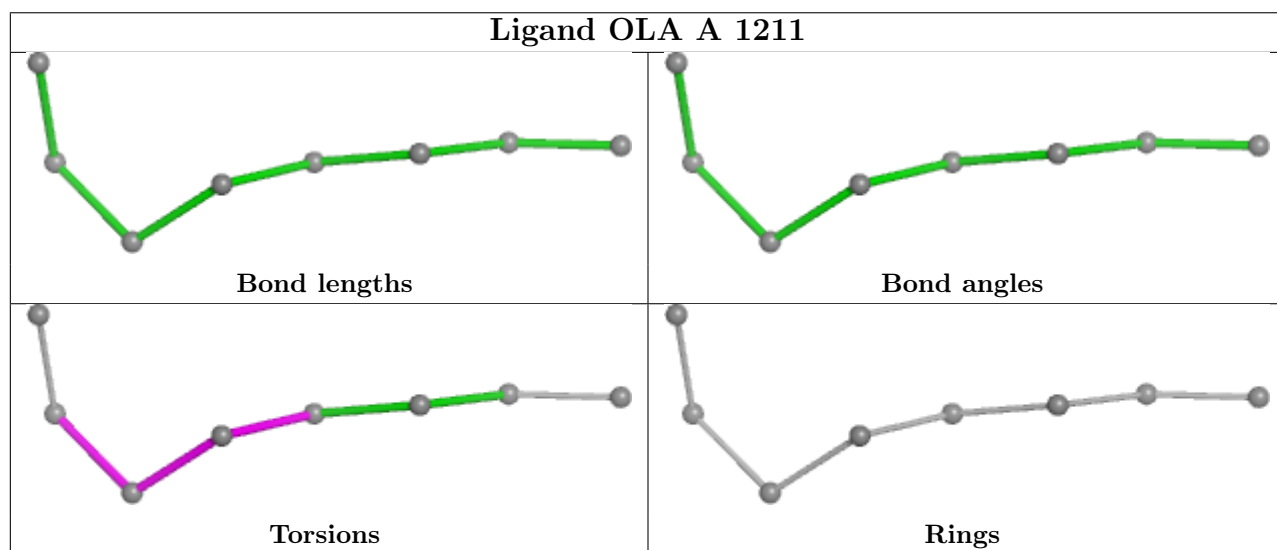
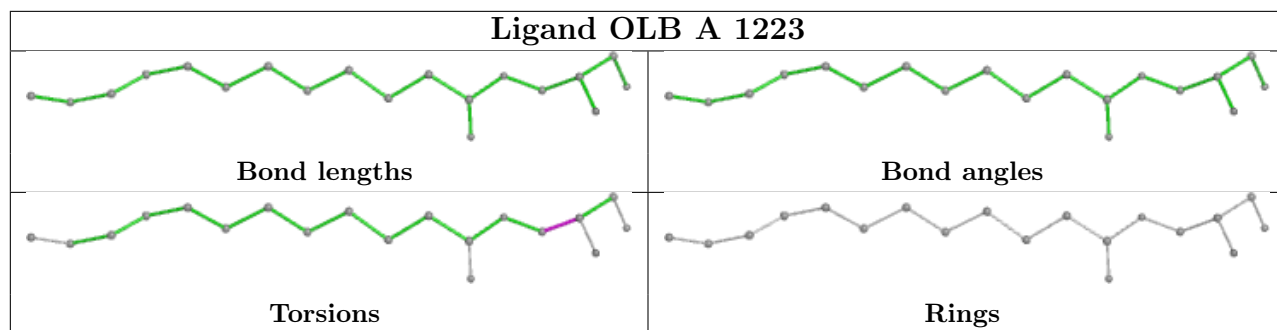


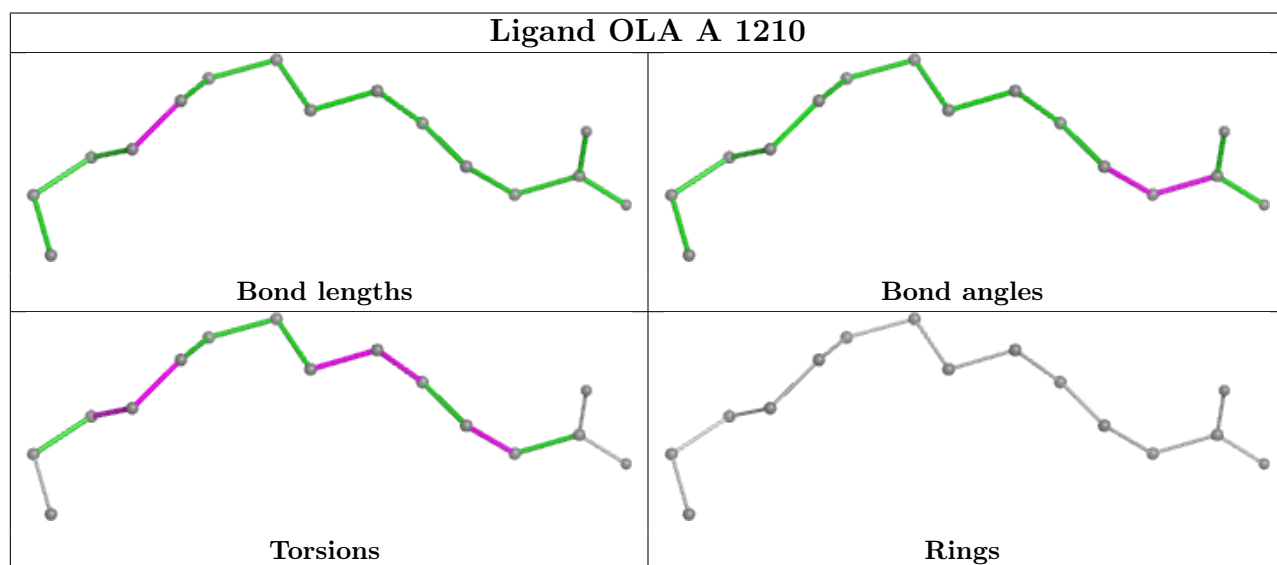
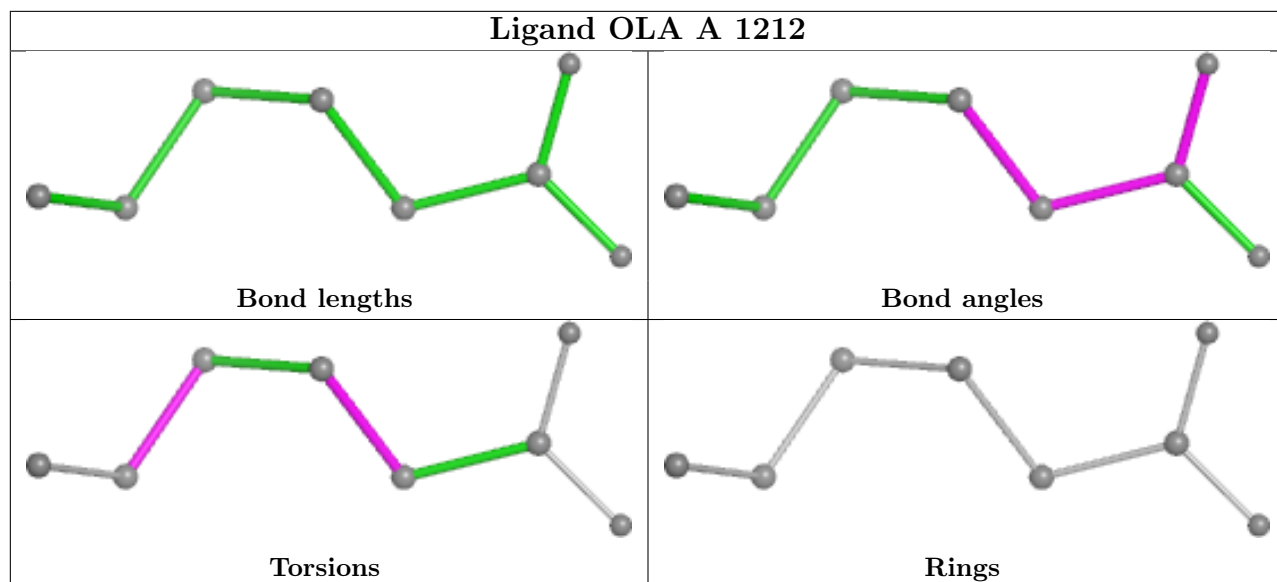


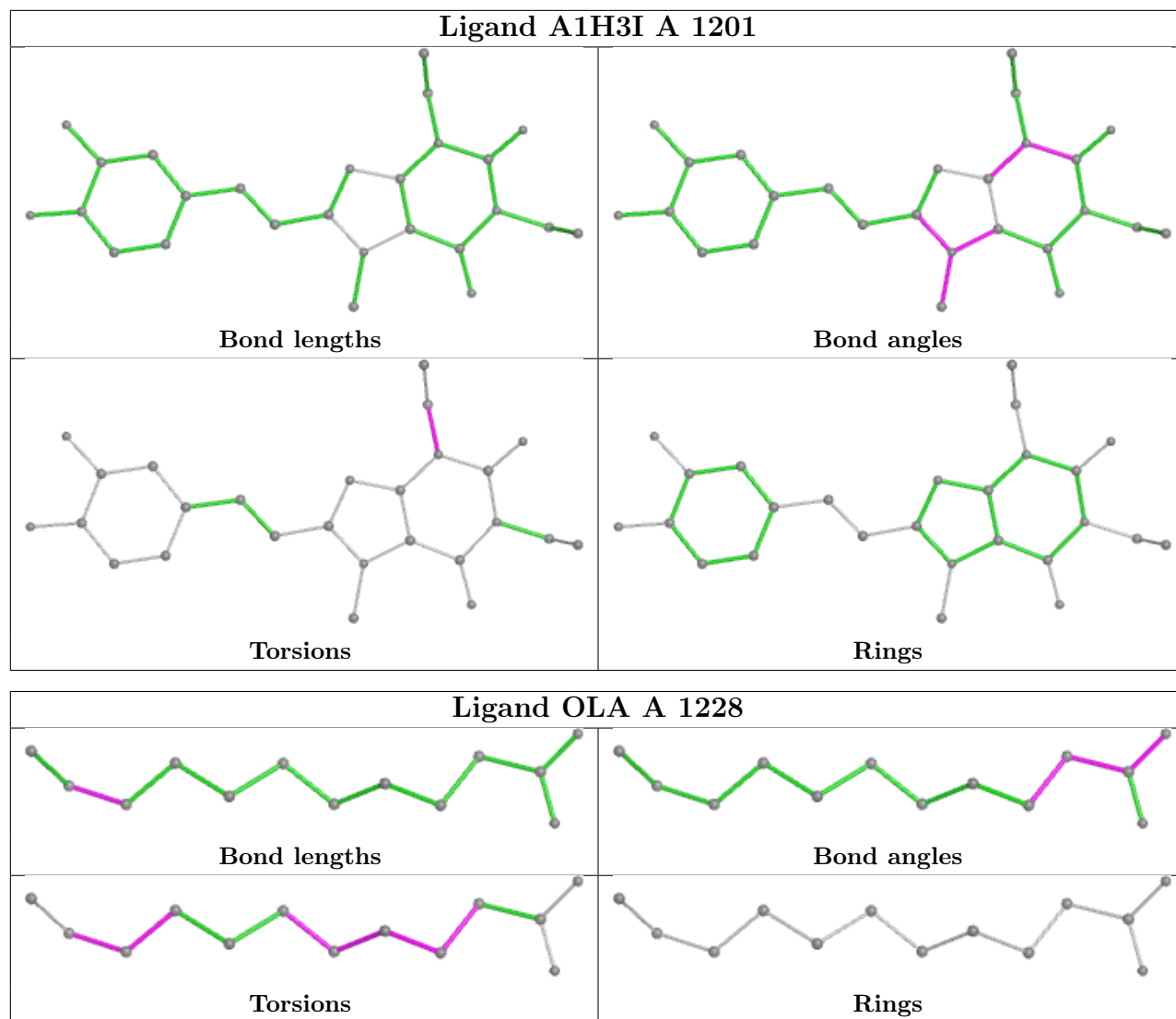












5.7 Other polymers [i](#)

There are no such residues in this entry.

5.8 Polymer linkage issues [i](#)

There are no chain breaks in this entry.

6 Fit of model and data [i](#)

6.1 Protein, DNA and RNA chains [i](#)

In the following table, the column labelled ‘#RSRZ> 2’ contains the number (and percentage) of RSRZ outliers, followed by percent RSRZ outliers for the chain as percentile scores relative to all X-ray entries and entries of similar resolution. The OWAB column contains the minimum, median, 95th percentile and maximum values of the occupancy-weighted average B-factor per residue. The column labelled ‘Q< 0.9’ lists the number of (and percentage) of residues with an average occupancy less than 0.9.

Mol	Chain	Analysed	<RSRZ>	#RSRZ>2	OWAB(Å ²)	Q<0.9
1	A	389/449 (86%)	-0.12	10 (2%) 57 60	24, 63, 114, 140	18 (4%)

All (10) RSRZ outliers are listed below:

Mol	Chain	Res	Type	RSRZ
1	A	1060	ASP	3.7
1	A	1042	LYS	3.4
1	A	1061	PHE	3.4
1	A	1106	LEU	2.8
1	A	0	ALA	2.7
1	A	106	ILE	2.5
1	A	1090	ALA	2.2
1	A	308	LEU	2.2
1	A	307	VAL	2.1
1	A	1064	GLY	2.0

6.2 Non-standard residues in protein, DNA, RNA chains [i](#)

There are no non-standard protein/DNA/RNA residues in this entry.

6.3 Carbohydrates [i](#)

There are no monosaccharides in this entry.

6.4 Ligands [i](#)

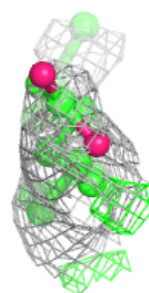
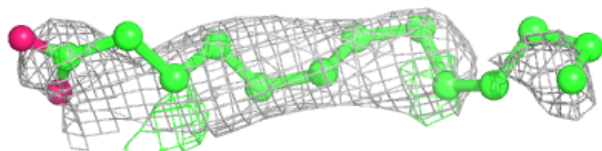
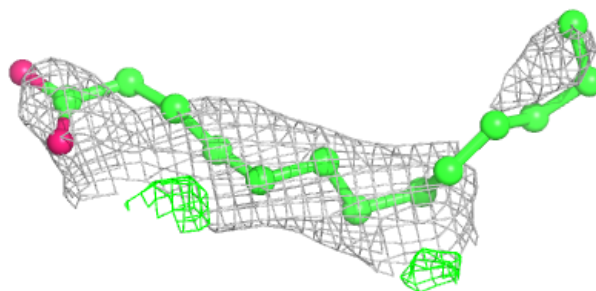
In the following table, the Atoms column lists the number of modelled atoms in the group and the number defined in the chemical component dictionary. The B-factors column lists the minimum, median, 95th percentile and maximum values of B factors of atoms in the group. The column labelled ‘Q< 0.9’ lists the number of atoms with occupancy less than 0.9.

Mol	Type	Chain	Res	Atoms	RSCC	RSR	B-factors(\AA^2)	Q<0.9
4	OLA	A	1210	15/20	0.75	0.19	95,106,114,121	0
4	OLA	A	1221	12/20	0.77	0.19	79,107,119,119	0
4	OLA	A	1214	19/20	0.78	0.18	89,101,119,129	0
4	OLA	A	1218	11/20	0.78	0.17	65,81,101,107	0
4	OLA	A	1207	7/20	0.78	0.20	73,85,87,87	0
4	OLA	A	1227	7/20	0.78	0.27	74,80,86,88	0
4	OLA	A	1226	10/20	0.80	0.20	79,97,101,101	0
5	OLB	A	1223	19/25	0.80	0.17	61,84,110,126	0
6	OLC	A	1224	19/25	0.81	0.17	63,84,104,114	0
4	OLA	A	1213	7/20	0.82	0.20	77,80,93,94	0
4	OLA	A	1206	15/20	0.82	0.16	73,91,117,132	0
4	OLA	A	1219	13/20	0.84	0.18	74,81,90,92	0
4	OLA	A	1212	8/20	0.85	0.13	82,87,94,110	0
4	OLA	A	1228	13/20	0.85	0.16	70,85,99,104	0
4	OLA	A	1222	10/20	0.87	0.19	65,84,93,101	0
4	OLA	A	1205	20/20	0.88	0.16	70,90,111,112	0
4	OLA	A	1209	18/20	0.88	0.15	73,84,112,117	0
4	OLA	A	1217	17/20	0.88	0.16	65,78,93,94	0
4	OLA	A	1220	17/20	0.89	0.16	78,88,118,119	0
4	OLA	A	1216	7/20	0.89	0.15	76,82,89,89	0
4	OLA	A	1208	9/20	0.90	0.14	67,73,88,99	0
4	OLA	A	1211	8/20	0.91	0.17	65,73,87,95	0
4	OLA	A	1225	17/20	0.92	0.14	71,78,91,93	0
4	OLA	A	1215	10/20	0.92	0.14	59,66,75,79	0
3	CLR	A	1202	28/28	0.93	0.11	58,73,94,98	0
3	CLR	A	1203	28/28	0.94	0.10	56,69,77,89	0
2	A1H3I	A	1201	26/26	0.95	0.08	40,50,72,78	0
3	CLR	A	1204	28/28	0.95	0.10	59,70,79,81	0
7	NA	A	1229	1/1	0.96	0.20	53,53,53,53	0

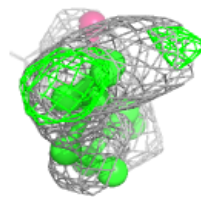
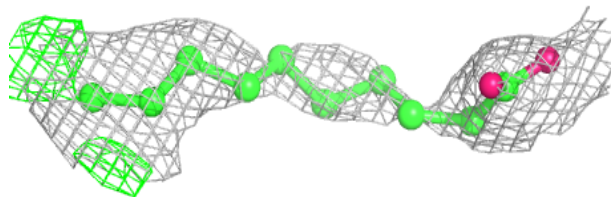
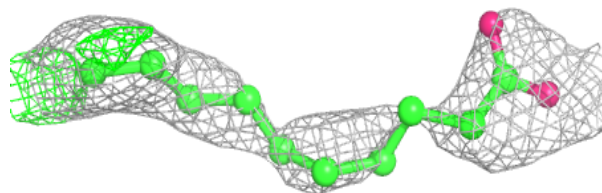
The following is a graphical depiction of the model fit to experimental electron density of all instances of the Ligand of Interest. In addition, ligands with molecular weight > 250 and outliers as shown on the geometry validation Tables will also be included. Each fit is shown from different orientation to approximate a three-dimensional view.

Electron density around OLA A 1210:

$2mF_o-DF_c$ (at 0.7 rmsd) in gray
 mF_o-DF_c (at 3 rmsd) in purple (negative)
and green (positive)

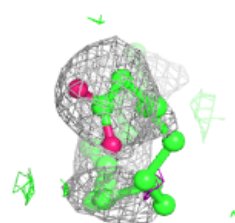
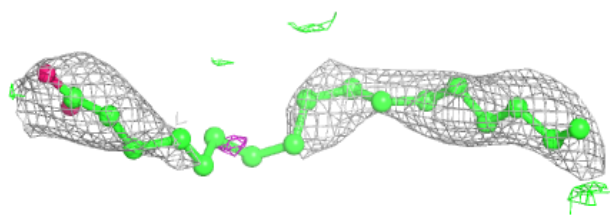
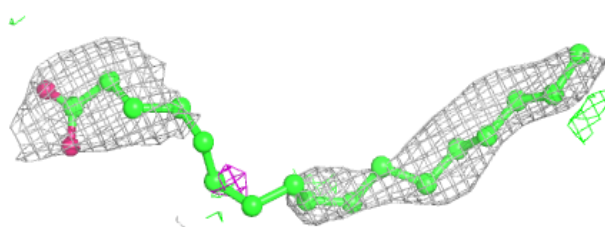
**Electron density around OLA A 1221:**

$2mF_o-DF_c$ (at 0.7 rmsd) in gray
 mF_o-DF_c (at 3 rmsd) in purple (negative)
and green (positive)

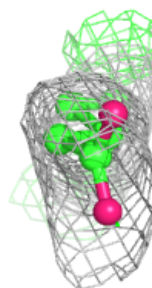
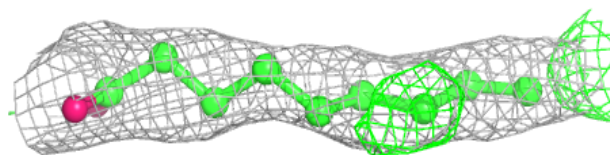
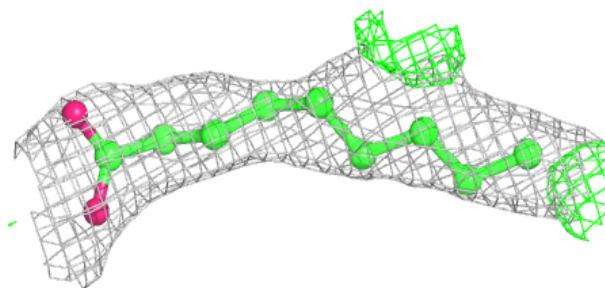


Electron density around OLA A 1214:

$2mF_o-DF_c$ (at 0.7 rmsd) in gray
 mF_o-DF_c (at 3 rmsd) in purple (negative)
and green (positive)

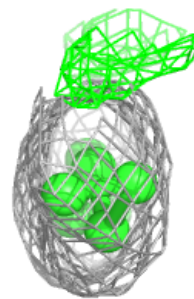
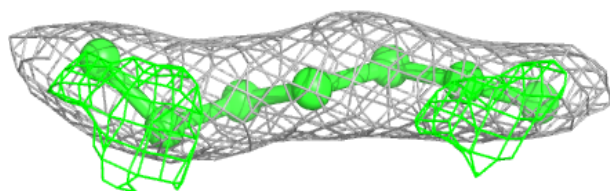
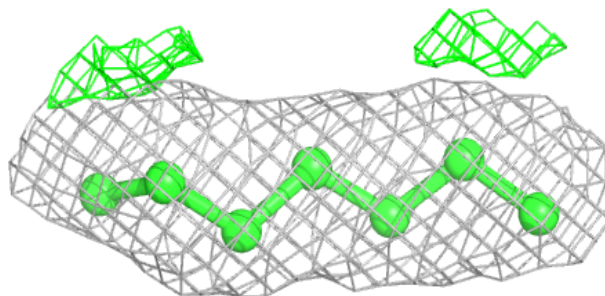
**Electron density around OLA A 1218:**

$2mF_o-DF_c$ (at 0.7 rmsd) in gray
 mF_o-DF_c (at 3 rmsd) in purple (negative)
and green (positive)

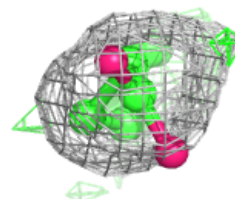
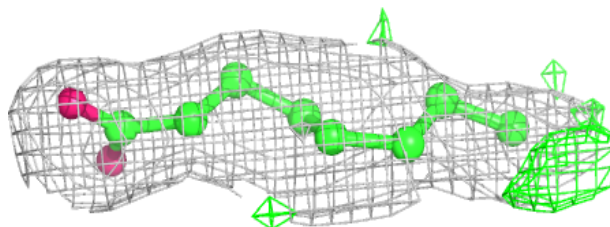
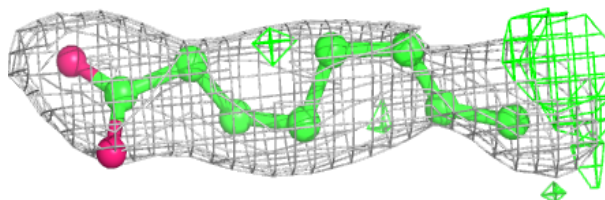


Electron density around OLA A 1207:

$2mF_o-DF_c$ (at 0.7 rmsd) in gray
 mF_o-DF_c (at 3 rmsd) in purple (negative)
and green (positive)

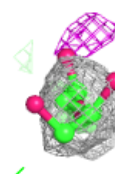
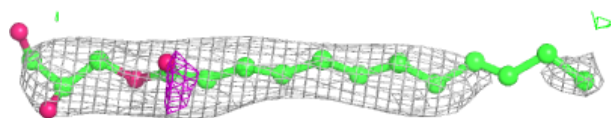
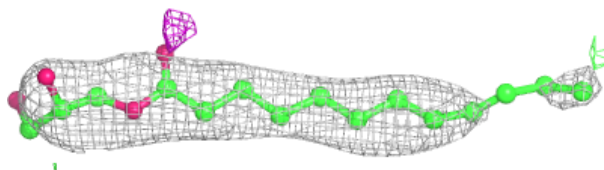
**Electron density around OLA A 1226:**

$2mF_o-DF_c$ (at 0.7 rmsd) in gray
 mF_o-DF_c (at 3 rmsd) in purple (negative)
and green (positive)

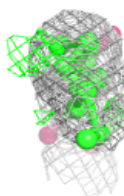
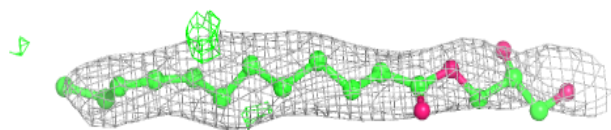
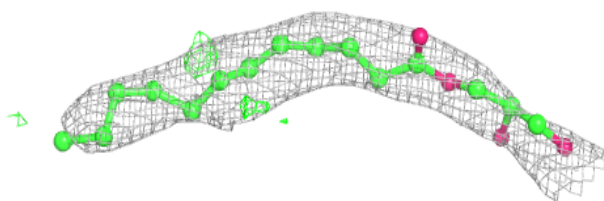


Electron density around OLB A 1223:

$2mF_o-DF_c$ (at 0.7 rmsd) in gray
 mF_o-DF_c (at 3 rmsd) in purple (negative)
and green (positive)

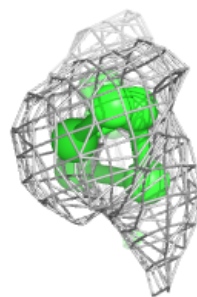
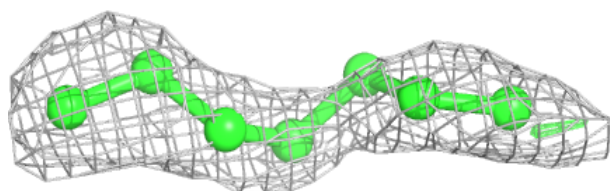
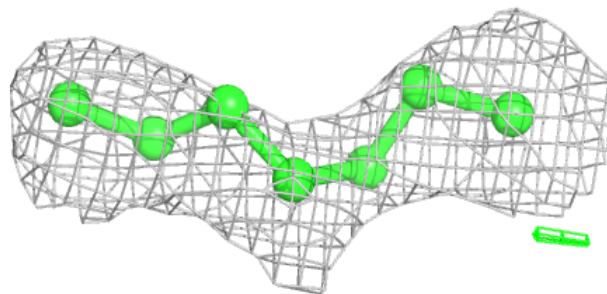
**Electron density around OLC A 1224:**

$2mF_o-DF_c$ (at 0.7 rmsd) in gray
 mF_o-DF_c (at 3 rmsd) in purple (negative)
and green (positive)

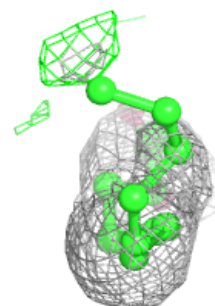
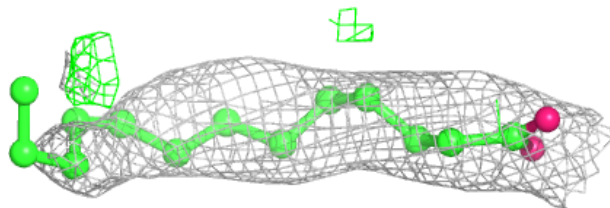
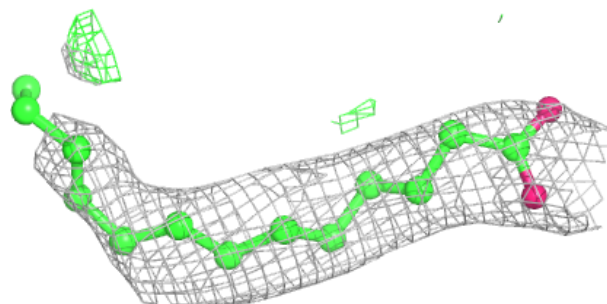


Electron density around OLA A 1213:

$2mF_o-DF_c$ (at 0.7 rmsd) in gray
 mF_o-DF_c (at 3 rmsd) in purple (negative)
and green (positive)

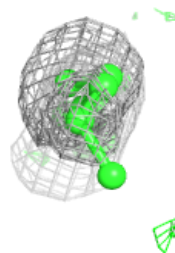
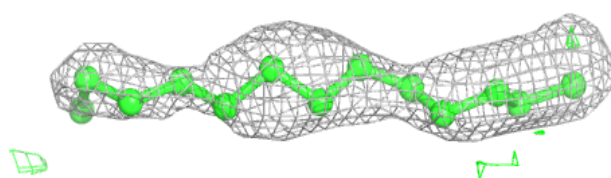
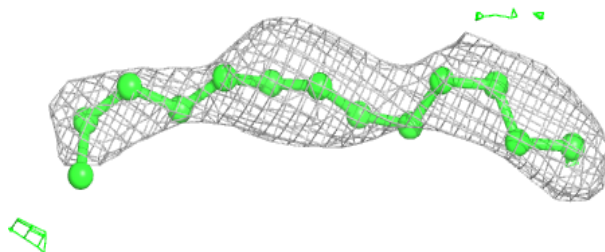
**Electron density around OLA A 1206:**

$2mF_o-DF_c$ (at 0.7 rmsd) in gray
 mF_o-DF_c (at 3 rmsd) in purple (negative)
and green (positive)

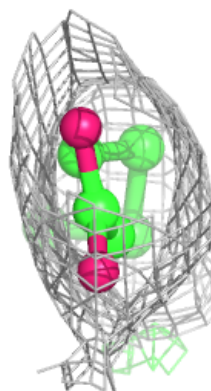
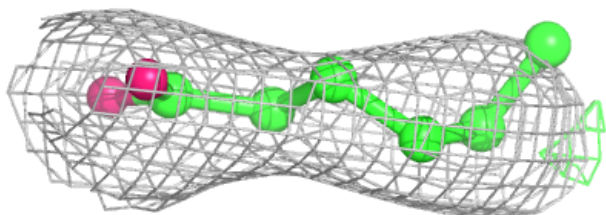
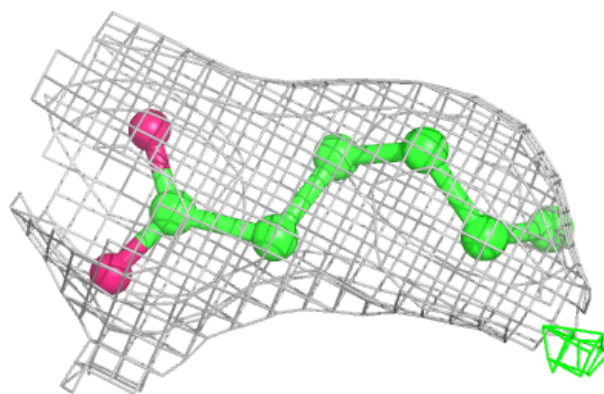


Electron density around OLA A 1219:

$2mF_o-DF_c$ (at 0.7 rmsd) in gray
 mF_o-DF_c (at 3 rmsd) in purple (negative)
and green (positive)

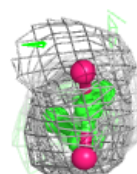
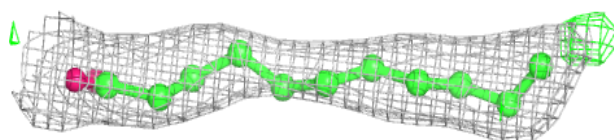
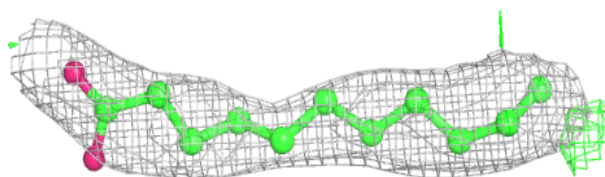
**Electron density around OLA A 1212:**

$2mF_o-DF_c$ (at 0.7 rmsd) in gray
 mF_o-DF_c (at 3 rmsd) in purple (negative)
and green (positive)

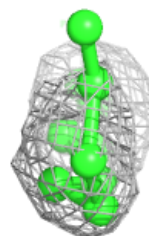
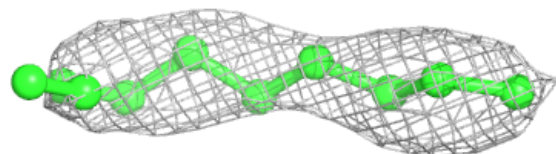
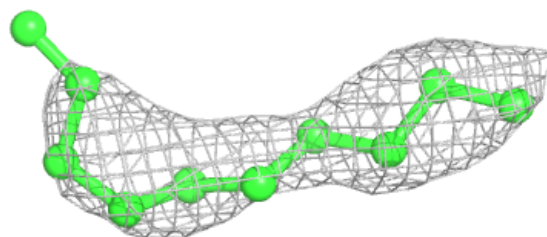


Electron density around OLA A 1228:

$2mF_o-DF_c$ (at 0.7 rmsd) in gray
 mF_o-DF_c (at 3 rmsd) in purple (negative)
and green (positive)

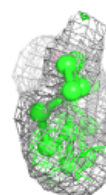
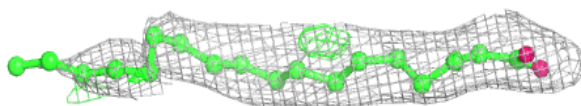
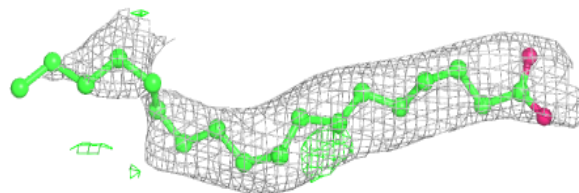
**Electron density around OLA A 1222:**

$2mF_o-DF_c$ (at 0.7 rmsd) in gray
 mF_o-DF_c (at 3 rmsd) in purple (negative)
and green (positive)

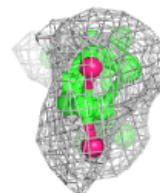
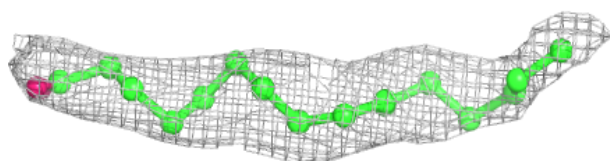
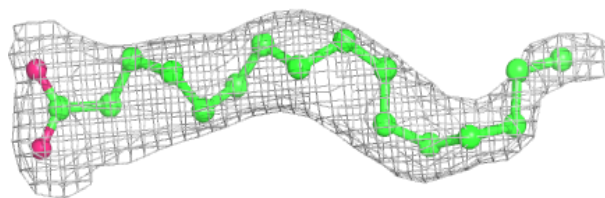


Electron density around OLA A 1205:

$2mF_o-DF_c$ (at 0.7 rmsd) in gray
 mF_o-DF_c (at 3 rmsd) in purple (negative)
and green (positive)

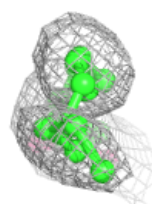
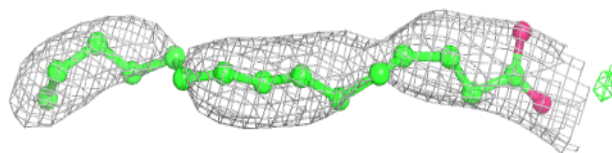
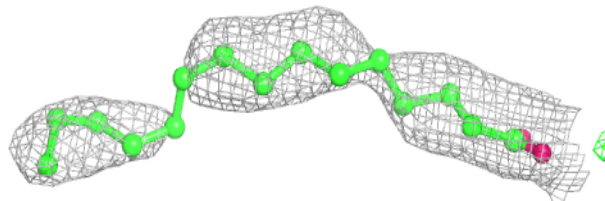
**Electron density around OLA A 1209:**

$2mF_o-DF_c$ (at 0.7 rmsd) in gray
 mF_o-DF_c (at 3 rmsd) in purple (negative)
and green (positive)

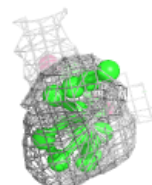
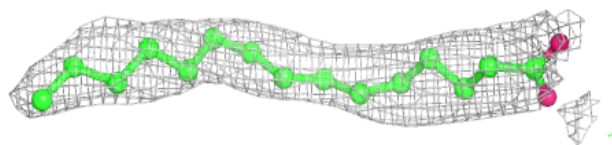
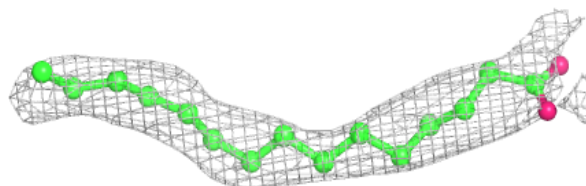


Electron density around OLA A 1217:

$2mF_o-DF_c$ (at 0.7 rmsd) in gray
 mF_o-DF_c (at 3 rmsd) in purple (negative)
and green (positive)

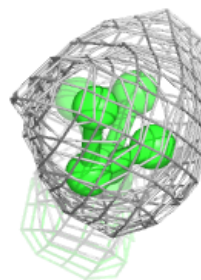
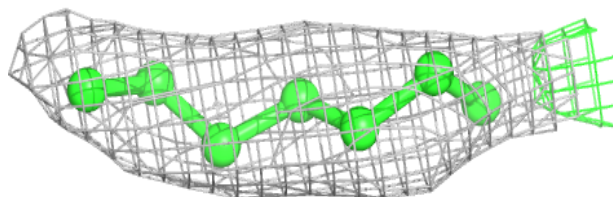
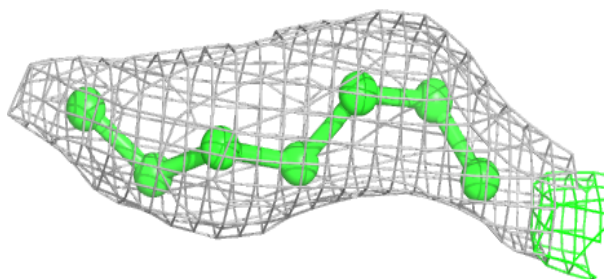
**Electron density around OLA A 1220:**

$2mF_o-DF_c$ (at 0.7 rmsd) in gray
 mF_o-DF_c (at 3 rmsd) in purple (negative)
and green (positive)

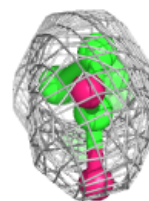
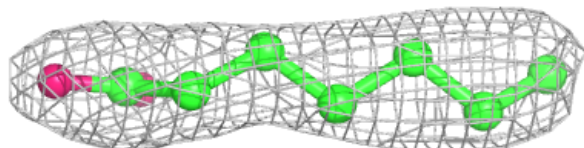
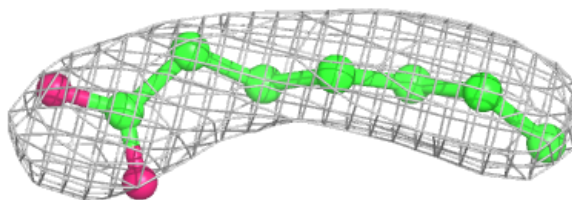


Electron density around OLA A 1216:

$2mF_o-DF_c$ (at 0.7 rmsd) in gray
 mF_o-DF_c (at 3 rmsd) in purple (negative)
and green (positive)

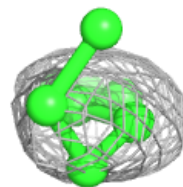
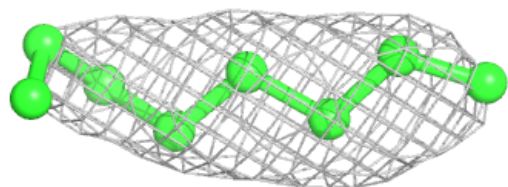
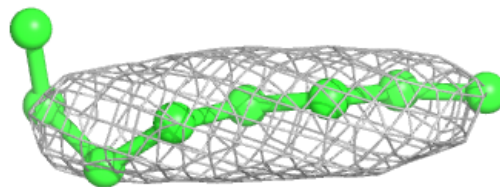
**Electron density around OLA A 1208:**

$2mF_o-DF_c$ (at 0.7 rmsd) in gray
 mF_o-DF_c (at 3 rmsd) in purple (negative)
and green (positive)

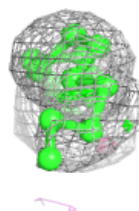
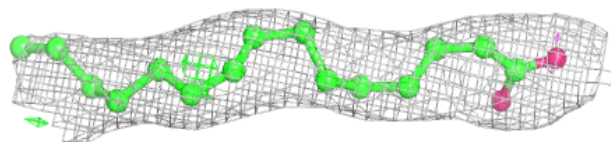
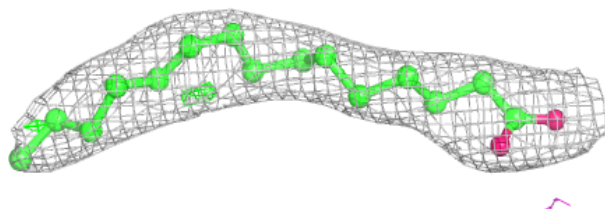


Electron density around OLA A 1211:

$2mF_o-DF_c$ (at 0.7 rmsd) in gray
 mF_o-DF_c (at 3 rmsd) in purple (negative)
and green (positive)

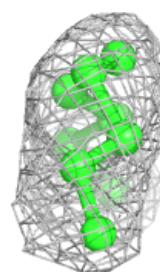
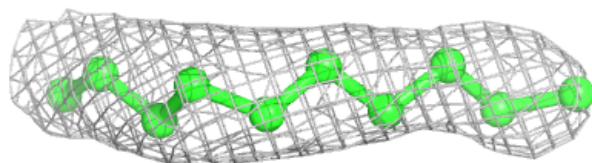
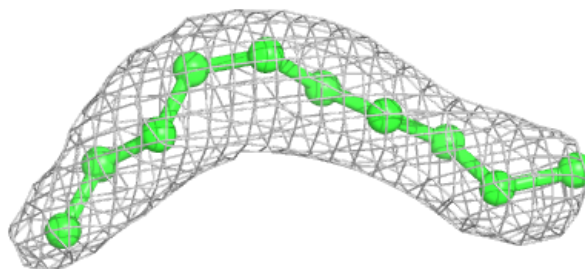
**Electron density around OLA A 1225:**

$2mF_o-DF_c$ (at 0.7 rmsd) in gray
 mF_o-DF_c (at 3 rmsd) in purple (negative)
and green (positive)

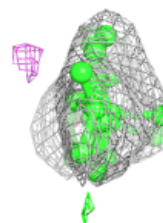
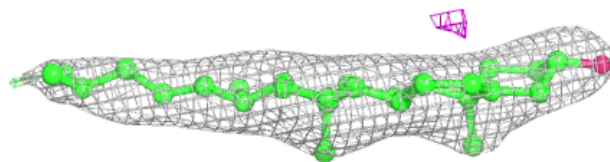
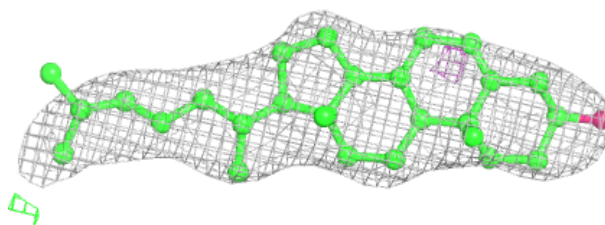


Electron density around OLA A 1215:

$2mF_o-DF_c$ (at 0.7 rmsd) in gray
 mF_o-DF_c (at 3 rmsd) in purple (negative)
and green (positive)

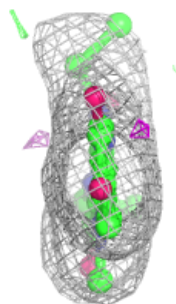
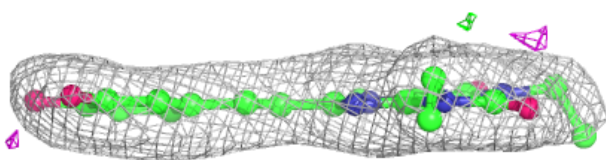
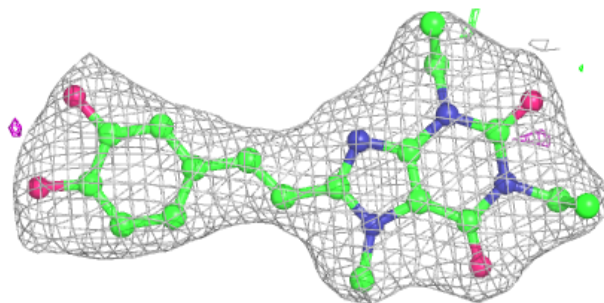
**Electron density around CLR A 1202:**

$2mF_o-DF_c$ (at 0.7 rmsd) in gray
 mF_o-DF_c (at 3 rmsd) in purple (negative)
and green (positive)

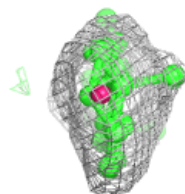
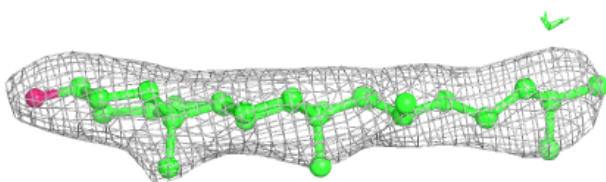
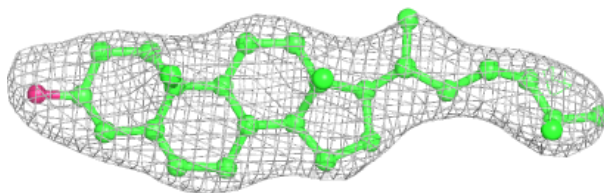


Electron density around A1H3I A 1201:

$2mF_o-DF_c$ (at 0.7 rmsd) in gray
 mF_o-DF_c (at 3 rmsd) in purple (negative)
and green (positive)

**Electron density around CLR A 1204:**

$2mF_o-DF_c$ (at 0.7 rmsd) in gray
 mF_o-DF_c (at 3 rmsd) in purple (negative)
and green (positive)



6.5 Other polymers [i](#)

There are no such residues in this entry.