



# Full wwPDB X-ray Structure Validation Report ⓘ

Jan 21, 2025 – 06:47 pm GMT

PDB ID : 8RIB  
Title : N-terminal domain of Trypanosoma brucei PEX14 in complex with a pyrazolo  
o-pyrazolo[4,3-c]pyridin-3-yl compound showing a novel binding pose  
Authors : Napolitano, V.; Janna Olmos, J.; Popowicz, G.M.; Dubin, G.  
Deposited on : 2023-12-18  
Resolution : 1.13 Å(reported)

This is a Full wwPDB X-ray Structure Validation Report for a publicly released PDB entry.

We welcome your comments at [validation@mail.wwpdb.org](mailto:validation@mail.wwpdb.org)

A user guide is available at

<https://www.wwpdb.org/validation/2017/XrayValidationReportHelp>

with specific help available everywhere you see the ⓘ symbol.

The types of validation reports are described at

<http://www.wwpdb.org/validation/2017/FAQs#types>.

---

The following versions of software and data (see [references ⓘ](#)) were used in the production of this report:

MolProbity : 4.02b-467  
Mogul : 1.8.4, CSD as541be (2020)  
Xtrriage (Phenix) : 1.13  
EDS : 3.0  
buster-report : 1.1.7 (2018)  
Percentile statistics : 20231227.v01 (using entries in the PDB archive December 27th 2023)  
CCP4 : 9.0.003 (Gargrove)  
Density-Fitness : 1.0.11  
Ideal geometry (proteins) : Engh & Huber (2001)  
Ideal geometry (DNA, RNA) : Parkinson et al. (1996)  
Validation Pipeline (wwPDB-VP) : 2.40

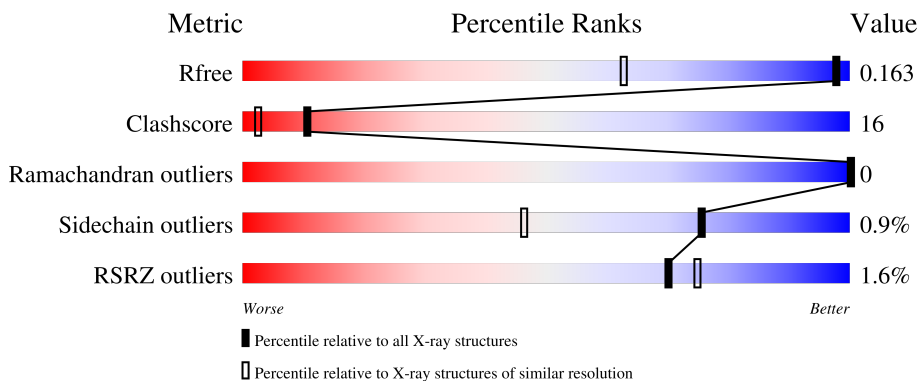
# 1 Overall quality at a glance i

The following experimental techniques were used to determine the structure:

*X-RAY DIFFRACTION*

The reported resolution of this entry is 1.13 Å.

Percentile scores (ranging between 0-100) for global validation metrics of the entry are shown in the following graphic. The table shows the number of entries on which the scores are based.



Metric	Whole archive (#Entries)	Similar resolution (#Entries, resolution range(Å))
$R_{free}$	164625	1652 (1.14-1.10)
Clashscore	180529	1870 (1.14-1.10)
Ramachandran outliers	177936	1828 (1.14-1.10)
Sidechain outliers	177891	1824 (1.14-1.10)
RSRZ outliers	164620	1652 (1.14-1.10)

The table below summarises the geometric issues observed across the polymeric chains and their fit to the electron density. The red, orange, yellow and green segments of the lower bar indicate the fraction of residues that contain outliers for  $\geq 3$ , 2, 1 and 0 types of geometric quality criteria respectively. A grey segment represents the fraction of residues that are not modelled. The numeric value for each fraction is indicated below the corresponding segment, with a dot representing fractions  $\leq 5\%$ . The upper red bar (where present) indicates the fraction of residues that have poor fit to the electron density. The numeric value is given above the bar.

Mol	Chain	Length	Quality of chain
1	A	69	<div style="display: flex; align-items: center;"> <div style="width: 3%; height: 10px; background-color: red; margin-right: 5px;"></div> <div style="width: 74%; height: 10px; background-color: green; margin-right: 5px;"></div> <div style="width: 16%; height: 10px; background-color: yellow; margin-right: 5px;"></div> <div style="width: 10%; height: 10px; background-color: grey;"></div> </div>
1	B	69	<div style="display: flex; align-items: center;"> <div style="width: 72%; height: 10px; background-color: green; margin-right: 5px;"></div> <div style="width: 17%; height: 10px; background-color: yellow; margin-right: 5px;"></div> <div style="width: 10%; height: 10px; background-color: grey;"></div> </div>

The following table lists non-polymeric compounds, carbohydrate monomers and non-standard residues in protein, DNA, RNA chains that are outliers for geometric or electron-density-fit criteria:

Mol	Type	Chain	Res	Chirality	Geometry	Clashes	Electron density
3	EDO	A	102	-	-	X	-
4	MLI	B	104	-	-	X	-

## 2 Entry composition

There are 7 unique types of molecules in this entry. The entry contains 2659 atoms, of which 1275 are hydrogens and 0 are deuteriums.

In the tables below, the ZeroOcc column contains the number of atoms modelled with zero occupancy, the AltConf column contains the number of residues with at least one atom in alternate conformation and the Trace column contains the number of residues modelled with at most 2 atoms.

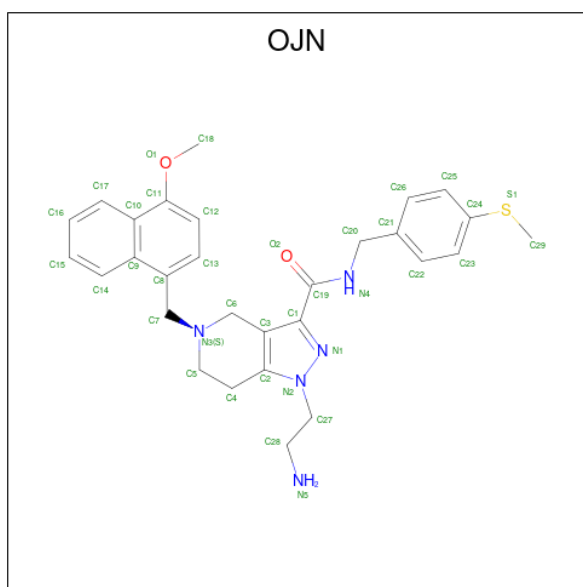
- Molecule 1 is a protein called Peroxisomal membrane protein PEX14.

Mol	Chain	Residues	Atoms						ZeroOcc	AltConf	Trace
			Total	C	H	N	O	S			
1	A	62	1141	343	590	102	104	2	17	7	0
1	B	62	1101	332	567	97	102	3	17	5	0

There are 8 discrepancies between the modelled and reference sequences:

Chain	Residue	Modelled	Actual	Comment	Reference
A	-2	GLY	-	expression tag	UNP Q8IEW2
A	-1	ALA	-	expression tag	UNP Q8IEW2
A	0	MET	-	expression tag	UNP Q8IEW2
A	1	TRP	-	expression tag	UNP Q8IEW2
B	-2	GLY	-	expression tag	UNP Q8IEW2
B	-1	ALA	-	expression tag	UNP Q8IEW2
B	0	MET	-	expression tag	UNP Q8IEW2
B	1	TRP	-	expression tag	UNP Q8IEW2

- Molecule 2 is 1-(2-azanylethyl)-5-[(4-methoxynaphthalen-1-yl)methyl]-{N}-[(4-methylsulfanylphenyl)methyl]-6,7-dihydro-4 {H}-pyrazolo[4,3-c]pyridine-3-carboxamide (three-letter code: OJN) (formula: C<sub>29</sub>H<sub>33</sub>N<sub>5</sub>O<sub>2</sub>S) (labeled as "Ligand of Interest" by depositor).



Mol	Chain	Residues	Atoms					ZeroOcc	AltConf	
			Total	C	H	N	O			S
2	A	1	Total	C	H	N	O	S	0	0
			70	29	33	5	2	1		
2	B	1	Total	C	H	N	O	S	0	0
			70	29	33	5	2	1		

- Molecule 3 is 1,2-ETHANEDIOL (three-letter code: EDO) (formula: C<sub>2</sub>H<sub>6</sub>O<sub>2</sub>).



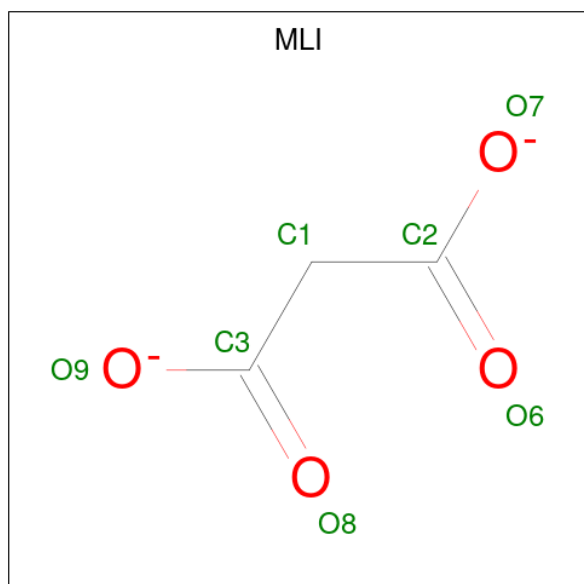
Mol	Chain	Residues	Atoms				ZeroOcc	AltConf
			Total	C	H	O		
3	A	1	Total	C	H	O	1	0
			10	2	6	2		
3	A	1	Total	C	H	O	1	0
			10	2	6	2		

*Continued on next page...*

Continued from previous page...

Mol	Chain	Residues	Atoms				ZeroOcc	AltConf
3	A	1	Total	C	H	O	1	0
			10	2	6	2		
3	A	1	Total	C	H	O	1	0
			10	2	6	2		
3	A	1	Total	C	H	O	1	0
			10	2	6	2		
3	B	1	Total	C	H	O	1	0
			10	2	6	2		
3	B	1	Total	C	H	O	1	0
			10	2	6	2		

- Molecule 4 is MALONATE ION (three-letter code: MLI) (formula:  $C_3H_2O_4$ ).



Mol	Chain	Residues	Atoms				ZeroOcc	AltConf
4	A	1	Total	C	H	O	0	0
			9	3	2	4		
4	B	1	Total	C	H	O	0	0
			9	3	2	4		

- Molecule 5 is SODIUM ION (three-letter code: NA) (formula: Na).

Mol	Chain	Residues	Atoms		ZeroOcc	AltConf
5	A	1	Total	Na	0	0
			1	1		

Continued on next page...

*Continued from previous page...*

Mol	Chain	Residues	Atoms		ZeroOcc	AltConf
5	B	4	Total	Na	0	0
			4	4		

- Molecule 6 is CHLORIDE ION (three-letter code: CL) (formula: Cl).

Mol	Chain	Residues	Atoms		ZeroOcc	AltConf
6	B	1	Total	Cl	0	0
			1	1		

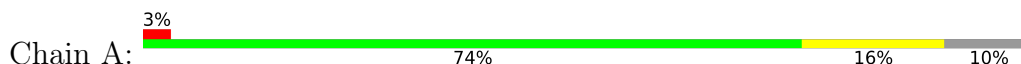
- Molecule 7 is water.

Mol	Chain	Residues	Atoms		ZeroOcc	AltConf
7	A	101	Total	O	0	0
			101	101		
7	B	71	Total	O	0	1
			72	72		

### 3 Residue-property plots [i](#)

These plots are drawn for all protein, RNA, DNA and oligosaccharide chains in the entry. The first graphic for a chain summarises the proportions of the various outlier classes displayed in the second graphic. The second graphic shows the sequence view annotated by issues in geometry and electron density. Residues are color-coded according to the number of geometric quality criteria for which they contain at least one outlier: green = 0, yellow = 1, orange = 2 and red = 3 or more. A red dot above a residue indicates a poor fit to the electron density ( $RSRZ > 2$ ). Stretches of 2 or more consecutive residues without any outlier are shown as a green connector. Residues present in the sample, but not in the model, are shown in grey.

- Molecule 1: Peroxisomal membrane protein PEX14



- Molecule 1: Peroxisomal membrane protein PEX14





## 4 Data and refinement statistics

Property	Value	Source
Space group	C 1 2 1	Depositor
Cell constants a, b, c, $\alpha$ , $\beta$ , $\gamma$	56.01Å 45.74Å 52.62Å 90.00° 118.87° 90.00°	Depositor
Resolution (Å)	46.08 – 1.13 46.08 – 1.13	Depositor EDS
% Data completeness (in resolution range)	80.4 (46.08-1.13) 80.5 (46.08-1.13)	Depositor EDS
$R_{merge}$	(Not available)	Depositor
$R_{sym}$	(Not available)	Depositor
$\langle I/\sigma(I) \rangle$ <sup>1</sup>	1.13 (at 1.12Å)	Xtrriage
Refinement program	REFMAC 5.8.0267	Depositor
R, $R_{free}$	0.126 , 0.162 0.126 , 0.163	Depositor DCC
$R_{free}$ test set	2087 reflections (4.69%)	wwPDB-VP
Wilson B-factor (Å <sup>2</sup> )	13.1	Xtrriage
Anisotropy	0.555	Xtrriage
Bulk solvent $k_{sol}$ (e/Å <sup>3</sup> ), $B_{sol}$ (Å <sup>2</sup> )	0.46 , 48.3	EDS
L-test for twinning <sup>2</sup>	$\langle  L  \rangle = 0.49$ , $\langle L^2 \rangle = 0.32$	Xtrriage
Estimated twinning fraction	No twinning to report.	Xtrriage
$F_o, F_c$ correlation	0.98	EDS
Total number of atoms	2659	wwPDB-VP
Average B, all atoms (Å <sup>2</sup> )	21.0	wwPDB-VP

Xtrriage's analysis on translational NCS is as follows: *The largest off-origin peak in the Patterson function is 9.69% of the height of the origin peak. No significant pseudotranslation is detected.*

<sup>1</sup>Intensities estimated from amplitudes.

<sup>2</sup>Theoretical values of  $\langle |L| \rangle$ ,  $\langle L^2 \rangle$  for acentric reflections are 0.5, 0.333 respectively for untwinned datasets, and 0.375, 0.2 for perfectly twinned datasets.

## 5 Model quality [i](#)

### 5.1 Standard geometry [i](#)

Bond lengths and bond angles in the following residue types are not validated in this section: EDO, MLI, OJN, NA, CME, CL

The Z score for a bond length (or angle) is the number of standard deviations the observed value is removed from the expected value. A bond length (or angle) with  $|Z| > 5$  is considered an outlier worth inspection. RMSZ is the root-mean-square of all Z scores of the bond lengths (or angles).

Mol	Chain	Bond lengths		Bond angles	
		RMSZ	# Z  >5	RMSZ	# Z  >5
1	A	0.81	0/551	0.85	1/730 (0.1%)
1	B	0.70	0/525	0.83	0/697
All	All	0.75	0/1076	0.84	1/1427 (0.1%)

There are no bond length outliers.

All (1) bond angle outliers are listed below:

Mol	Chain	Res	Type	Atoms	Z	Observed(°)	Ideal(°)
1	A	25	ARG	NE-CZ-NH2	5.27	122.94	120.30

There are no chirality outliers.

There are no planarity outliers.

### 5.2 Too-close contacts [i](#)

In the following table, the Non-H and H(model) columns list the number of non-hydrogen atoms and hydrogen atoms in the chain respectively. The H(added) column lists the number of hydrogen atoms added and optimized by MolProbity. The Clashes column lists the number of clashes within the asymmetric unit, whereas Symm-Clashes lists symmetry-related clashes.

Mol	Chain	Non-H	H(model)	H(added)	Clashes	Symm-Clashes
1	A	551	590	585	15	0
1	B	534	567	559	17	0
2	A	37	33	0	3	0
2	B	37	33	0	0	0
3	A	24	36	36	5	0
3	B	8	12	12	1	0
4	A	7	2	2	1	0
4	B	7	2	2	5	0

*Continued on next page...*

*Continued from previous page...*

Mol	Chain	Non-H	H(model)	H(added)	Clashes	Symm-Clashes
5	A	1	0	0	0	0
5	B	4	0	0	0	0
6	B	1	0	0	0	0
7	A	101	0	0	10	0
7	B	72	0	0	11	0
All	All	1384	1275	1196	40	0

The all-atom clashscore is defined as the number of clashes found per 1000 atoms (including hydrogen atoms). The all-atom clashscore for this structure is 16.

All (40) close contacts within the same asymmetric unit are listed below, sorted by their clash magnitude.

Atom-1	Atom-2	Interatomic distance (Å)	Clash overlap (Å)
3:A:102:EDO:H21	7:A:207:HOH:O	1.52	1.07
2:A:101:OJN:N5	7:A:201:HOH:O	1.86	1.05
1:A:16[A]:GLU:HG3	7:A:209:HOH:O	1.60	0.97
1:B:10:ARG:NH2	1:B:44[B]:GLU:OE2	2.09	0.85
4:B:104:MLI:C1	7:B:264:HOH:O	2.27	0.82
1:B:10:ARG:HE	1:B:44[B]:GLU:CD	1.83	0.81
4:B:104:MLI:H11	7:B:264:HOH:O	1.82	0.79
1:B:24:ARG:HD3	7:B:243:HOH:O	1.86	0.75
1:B:51[A]:LYS:HG3	7:B:208:HOH:O	1.89	0.72
1:A:63[B]:ARG:NH2	7:A:203:HOH:O	2.25	0.69
4:B:104:MLI:H12	7:B:264:HOH:O	1.92	0.69
1:A:13:ASN:HD22	2:A:101:OJN:C29	2.06	0.68
1:A:47:GLU:OE1	7:A:202:HOH:O	2.13	0.65
1:A:63[B]:ARG:NH1	7:A:205:HOH:O	2.30	0.64
1:B:36:LYS:NZ	7:B:203:HOH:O	2.32	0.62
1:A:6:GLU:HG2	7:A:262:HOH:O	2.00	0.61
1:A:24:ARG:NH1	7:A:206:HOH:O	2.33	0.61
3:B:103:EDO:O1	7:B:201:HOH:O	2.09	0.58
4:A:108:MLI:H12	7:B:218:HOH:O	2.03	0.58
1:A:66:SER:O	3:A:102:EDO:H21	2.04	0.57
1:B:10:ARG:NE	1:B:44[B]:GLU:OE2	2.37	0.57
1:B:10:ARG:NE	1:B:44[B]:GLU:OE1	2.35	0.55
1:A:16[A]:GLU:CG	7:A:209:HOH:O	2.35	0.55
1:B:10:ARG:CZ	1:B:44[B]:GLU:OE2	2.54	0.54
4:B:104:MLI:O6	7:B:202:HOH:O	2.19	0.53
1:A:66:SER:O	3:A:102:EDO:C2	2.58	0.51
1:B:46[A]:CME:HA	1:B:61[A]:ILE:CD1	2.41	0.51
1:B:54:GLN:HE21	1:B:54:GLN:HA	1.76	0.50

*Continued on next page...*

Continued from previous page...

Atom-1	Atom-2	Interatomic distance (Å)	Clash overlap (Å)
1:B:40:LEU:HA	1:B:44[B]:GLU:OE1	2.13	0.48
1:B:54:GLN:HA	1:B:54:GLN:NE2	2.29	0.47
1:B:43:GLU:O	1:B:46[A]:CME:HB2	2.16	0.46
1:B:6:GLU:HG3	7:B:235:HOH:O	2.16	0.46
1:B:63:ARG:O	4:B:104:MLI:C2	2.65	0.44
1:B:10:ARG:HD3	7:B:209:HOH:O	2.17	0.44
1:A:66:SER:O	3:A:102:EDO:O2	2.30	0.43
1:B:46[A]:CME:HA	1:B:61[A]:ILE:HD11	2.00	0.42
1:A:16[B]:GLU:HG2	7:A:201:HOH:O	2.21	0.41
1:A:13:ASN:ND2	2:A:101:OJN:C29	2.79	0.41
1:A:21[A]:SER:OG	3:A:104:EDO:H11	2.21	0.41
1:A:46:CME:C	1:A:46:CME:SD	3.10	0.40

There are no symmetry-related clashes.

## 5.3 Torsion angles [i](#)

### 5.3.1 Protein backbone [i](#)

In the following table, the Percentiles column shows the percent Ramachandran outliers of the chain as a percentile score with respect to all X-ray entries followed by that with respect to entries of similar resolution.

The Analysed column shows the number of residues for which the backbone conformation was analysed, and the total number of residues.

Mol	Chain	Analysed	Favoured	Allowed	Outliers	Percentiles	
1	A	66/69 (96%)	66 (100%)	0	0	100	100
1	B	63/69 (91%)	63 (100%)	0	0	100	100
All	All	129/138 (94%)	129 (100%)	0	0	100	100

There are no Ramachandran outliers to report.

### 5.3.2 Protein sidechains [i](#)

In the following table, the Percentiles column shows the percent sidechain outliers of the chain as a percentile score with respect to all X-ray entries followed by that with respect to entries of similar resolution.

The Analysed column shows the number of residues for which the sidechain conformation was

analysed, and the total number of residues.

Mol	Chain	Analysed	Rotameric	Outliers	Percentiles	
1	A	63/61 (103%)	61 (97%)	2 (3%)	34	4
1	B	60/61 (98%)	60 (100%)	0	100	100
All	All	123/122 (101%)	121 (98%)	2 (2%)	75	21

All (2) residues with a non-rotameric sidechain are listed below:

Mol	Chain	Res	Type
1	A	36[A]	LYS
1	A	36[B]	LYS

Sometimes sidechains can be flipped to improve hydrogen bonding and reduce clashes. All (2) such sidechains are listed below:

Mol	Chain	Res	Type
1	A	13	ASN
1	B	54	GLN

### 5.3.3 RNA [i](#)

There are no RNA molecules in this entry.

## 5.4 Non-standard residues in protein, DNA, RNA chains [i](#)

3 non-standard protein/DNA/RNA residues are modelled in this entry.

In the following table, the Counts columns list the number of bonds (or angles) for which Mogul statistics could be retrieved, the number of bonds (or angles) that are observed in the model and the number of bonds (or angles) that are defined in the Chemical Component Dictionary. The Link column lists molecule types, if any, to which the group is linked. The Z score for a bond length (or angle) is the number of standard deviations the observed value is removed from the expected value. A bond length (or angle) with  $|Z| > 2$  is considered an outlier worth inspection. RMSZ is the root-mean-square of all Z scores of the bond lengths (or angles).

Mol	Type	Chain	Res	Link	Bond lengths			Bond angles		
					Counts	RMSZ	$\# Z  > 2$	Counts	RMSZ	$\# Z  > 2$
1	CME	A	46	1	8,9,10	0.59	0	5,9,11	0.40	0
1	CME	B	46[A]	1	8,9,10	0.56	0	5,9,11	0.63	0
1	CME	B	46[B]	1	4,5,10	0.97	0	1,5,11	0.33	0

In the following table, the Chirals column lists the number of chiral outliers, the number of chiral

centers analysed, the number of these observed in the model and the number defined in the Chemical Component Dictionary. Similar counts are reported in the Torsion and Rings columns. '-' means no outliers of that kind were identified.

Mol	Type	Chain	Res	Link	Chirals	Torsions	Rings
1	CME	A	46	1	-	0/5/8/10	-
1	CME	B	46[A]	1	-	0/5/8/10	-
1	CME	B	46[B]	1	-	1/1/4/10	-

There are no bond length outliers.

There are no bond angle outliers.

There are no chirality outliers.

All (1) torsion outliers are listed below:

Mol	Chain	Res	Type	Atoms
1	B	46[B]	CME	N-CA-CB-SG

There are no ring outliers.

2 monomers are involved in 4 short contacts:

Mol	Chain	Res	Type	Clashes	Symm-Clashes
1	A	46	CME	1	0
1	B	46[A]	CME	3	0

## 5.5 Carbohydrates [i](#)

There are no oligosaccharides in this entry.

## 5.6 Ligand geometry [i](#)

Of 18 ligands modelled in this entry, 6 are monoatomic - leaving 12 for Mogul analysis.

In the following table, the Counts columns list the number of bonds (or angles) for which Mogul statistics could be retrieved, the number of bonds (or angles) that are observed in the model and the number of bonds (or angles) that are defined in the Chemical Component Dictionary. The Link column lists molecule types, if any, to which the group is linked. The Z score for a bond length (or angle) is the number of standard deviations the observed value is removed from the expected value. A bond length (or angle) with  $|Z| > 2$  is considered an outlier worth inspection. RMSZ is the root-mean-square of all Z scores of the bond lengths (or angles).

Mol	Type	Chain	Res	Link	Bond lengths			Bond angles		
					Counts	RMSZ	$\# Z  > 2$	Counts	RMSZ	$\# Z  > 2$
3	EDO	A	104	-	3,3,3	0.25	0	2,2,2	0.39	0

Mol	Type	Chain	Res	Link	Bond lengths			Bond angles		
					Counts	RMSZ	# Z  > 2	Counts	RMSZ	# Z  > 2
3	EDO	A	103	-	3,3,3	0.47	0	2,2,2	0.32	0
3	EDO	B	102	5	3,3,3	0.14	0	2,2,2	0.27	0
3	EDO	B	103	-	3,3,3	0.27	0	2,2,2	0.28	0
3	EDO	A	107	-	3,3,3	0.34	0	2,2,2	0.22	0
2	OJN	B	101	-	40,41,41	0.86	2 (5%)	48,57,57	0.95	1 (2%)
3	EDO	A	106	-	3,3,3	0.06	0	2,2,2	0.18	0
3	EDO	A	102	-	3,3,3	0.46	0	2,2,2	0.30	0
4	MLI	B	104	5	6,6,6	1.08	0	7,7,7	1.80	1 (14%)
4	MLI	A	108	-	6,6,6	1.40	1 (16%)	7,7,7	1.11	0
2	OJN	A	101	-	40,41,41	0.66	1 (2%)	48,57,57	1.13	3 (6%)
3	EDO	A	105	-	3,3,3	0.31	0	2,2,2	0.52	0

In the following table, the Chirals column lists the number of chiral outliers, the number of chiral centers analysed, the number of these observed in the model and the number defined in the Chemical Component Dictionary. Similar counts are reported in the Torsion and Rings columns. '-' means no outliers of that kind were identified.

Mol	Type	Chain	Res	Link	Chirals	Torsions	Rings
3	EDO	A	104	-	-	1/1/1/1	-
3	EDO	A	103	-	-	1/1/1/1	-
3	EDO	B	102	5	-	1/1/1/1	-
3	EDO	B	103	-	-	1/1/1/1	-
3	EDO	A	107	-	-	1/1/1/1	-
2	OJN	B	101	-	-	3/16/29/29	0/5/5/5
3	EDO	A	106	-	-	1/1/1/1	-
3	EDO	A	102	-	-	1/1/1/1	-
4	MLI	B	104	5	-	2/4/4/4	-
4	MLI	A	108	-	-	4/4/4/4	-
2	OJN	A	101	-	-	3/16/29/29	0/5/5/5
3	EDO	A	105	-	-	1/1/1/1	-

All (4) bond length outliers are listed below:

Mol	Chain	Res	Type	Atoms	Z	Observed(Å)	Ideal(Å)
2	B	101	OJN	C1-C19	-3.54	1.45	1.50
2	A	101	OJN	C1-C19	-3.03	1.46	1.50
4	A	108	MLI	O9-C3	-2.63	1.21	1.30
2	B	101	OJN	C1-C3	-2.16	1.37	1.41

All (5) bond angle outliers are listed below:

Mol	Chain	Res	Type	Atoms	Z	Observed(°)	Ideal(°)
4	B	104	MLI	C3-C1-C2	3.51	125.17	112.87
2	A	101	OJN	C6-N3-C5	3.50	114.38	109.91
2	A	101	OJN	C5-C4-C2	-2.76	108.26	113.16
2	B	101	OJN	C5-C4-C2	-2.74	108.30	113.16
2	A	101	OJN	C3-C6-N3	-2.25	108.49	111.56

There are no chirality outliers.

All (20) torsion outliers are listed below:

Mol	Chain	Res	Type	Atoms
2	A	101	OJN	C25-C24-S1-C29
2	A	101	OJN	C23-C24-S1-C29
2	B	101	OJN	C23-C24-S1-C29
2	B	101	OJN	C25-C24-S1-C29
3	A	103	EDO	O1-C1-C2-O2
3	A	105	EDO	O1-C1-C2-O2
3	A	106	EDO	O1-C1-C2-O2
3	A	107	EDO	O1-C1-C2-O2
2	A	101	OJN	N2-C27-C28-N5
2	B	101	OJN	N2-C27-C28-N5
3	A	102	EDO	O1-C1-C2-O2
3	A	104	EDO	O1-C1-C2-O2
3	B	102	EDO	O1-C1-C2-O2
3	B	103	EDO	O1-C1-C2-O2
4	A	108	MLI	C3-C1-C2-O7
4	B	104	MLI	C2-C1-C3-O8
4	A	108	MLI	C2-C1-C3-O8
4	A	108	MLI	C2-C1-C3-O9
4	A	108	MLI	C3-C1-C2-O6
4	B	104	MLI	C2-C1-C3-O9

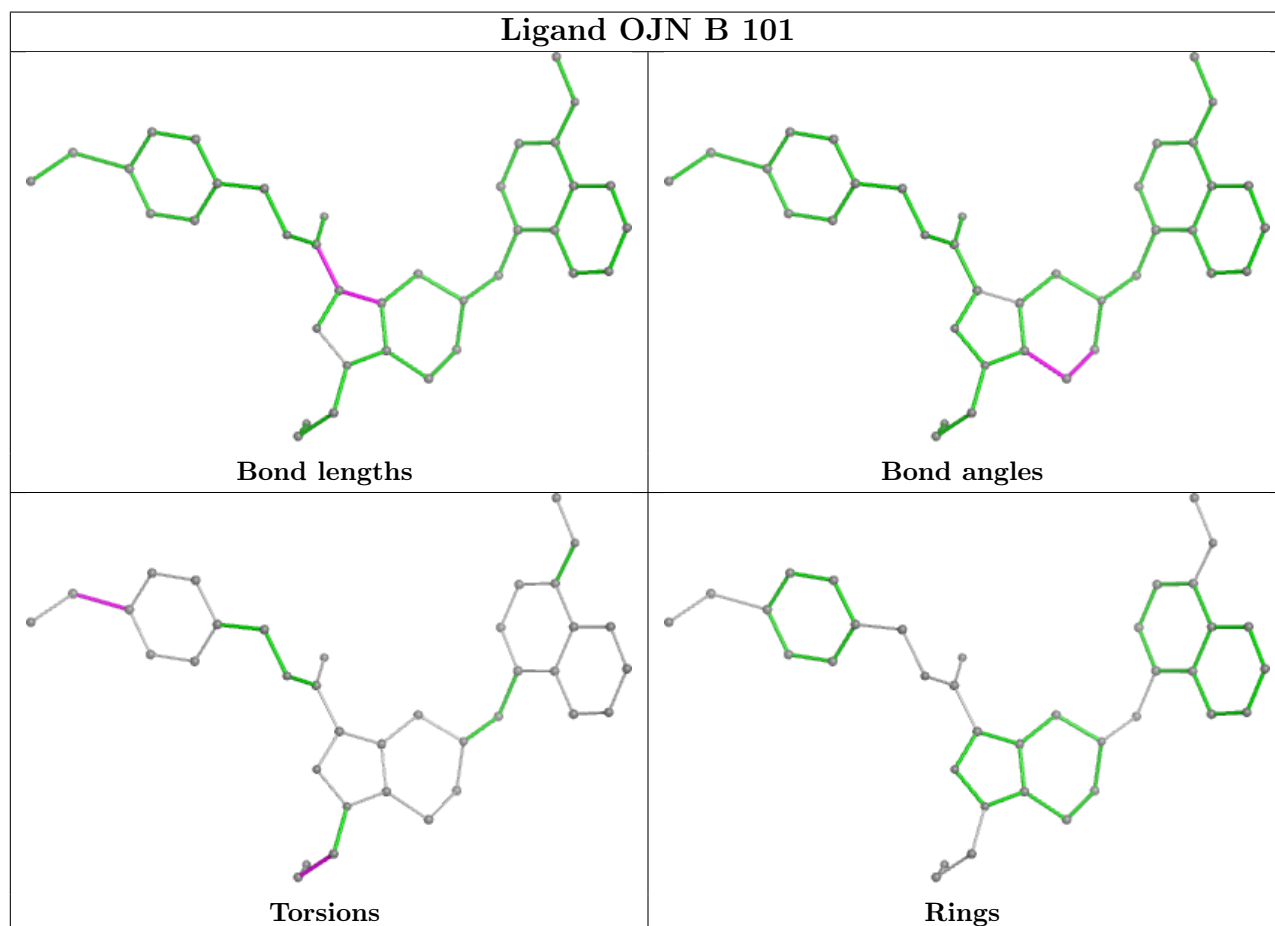
There are no ring outliers.

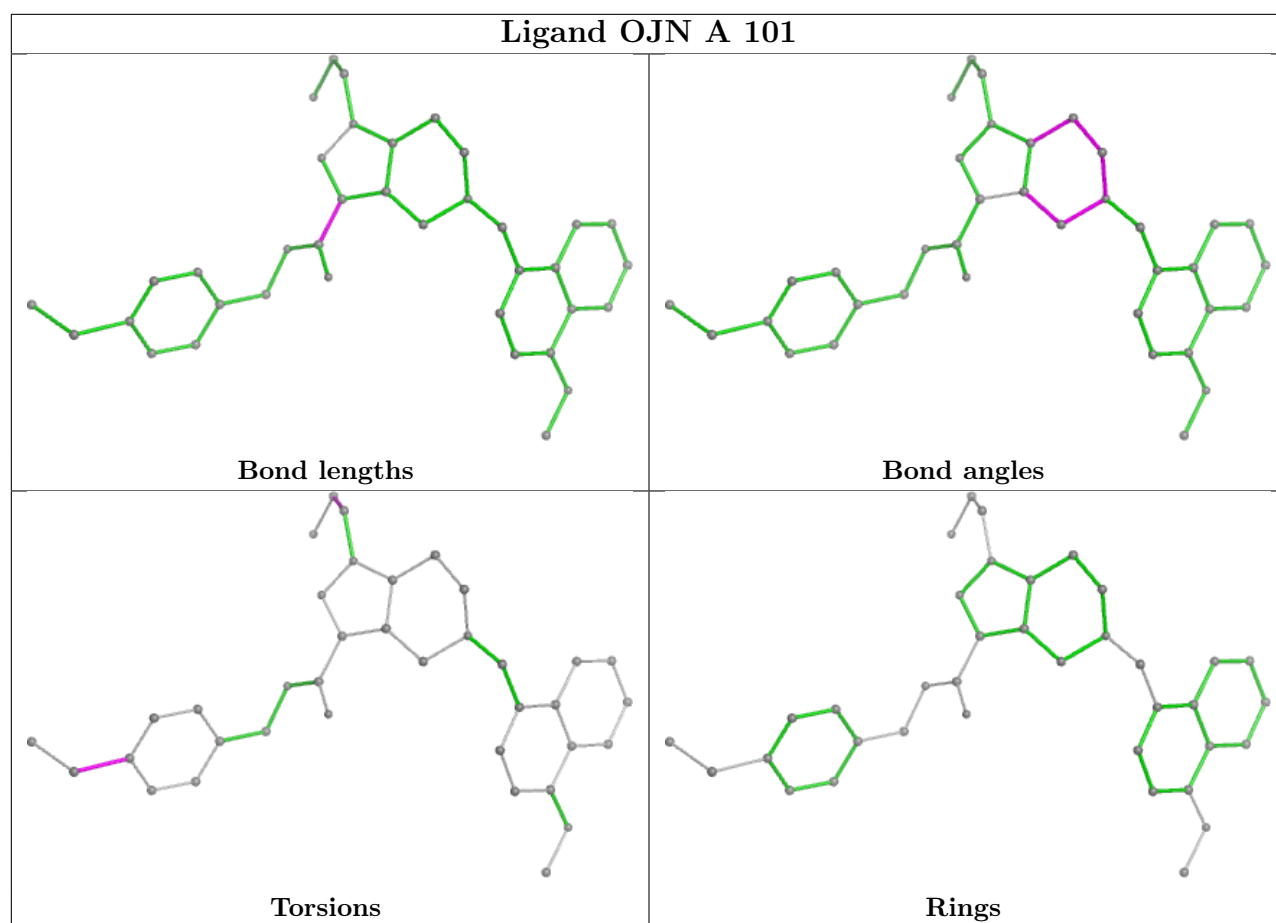
6 monomers are involved in 15 short contacts:

Mol	Chain	Res	Type	Clashes	Symm-Clashes
3	A	104	EDO	1	0
3	B	103	EDO	1	0
3	A	102	EDO	4	0
4	B	104	MLI	5	0
4	A	108	MLI	1	0
2	A	101	OJN	3	0



The following is a two-dimensional graphical depiction of Mogul quality analysis of bond lengths, bond angles, torsion angles, and ring geometry for all instances of the Ligand of Interest. In addition, ligands with molecular weight > 250 and outliers as shown on the validation Tables will also be included. For torsion angles, if less than 5% of the Mogul distribution of torsion angles is within 10 degrees of the torsion angle in question, then that torsion angle is considered an outlier. Any bond that is central to one or more torsion angles identified as an outlier by Mogul will be highlighted in the graph. For rings, the root-mean-square deviation (RMSD) between the ring in question and similar rings identified by Mogul is calculated over all ring torsion angles. If the average RMSD is greater than 60 degrees and the minimal RMSD between the ring in question and any Mogul-identified rings is also greater than 60 degrees, then that ring is considered an outlier. The outliers are highlighted in purple. The color gray indicates Mogul did not find sufficient equivalents in the CSD to analyse the geometry.





## 5.7 Other polymers [\(i\)](#)

There are no such residues in this entry.

## 5.8 Polymer linkage issues [\(i\)](#)

There are no chain breaks in this entry.

## 6 Fit of model and data [i](#)

### 6.1 Protein, DNA and RNA chains [i](#)

In the following table, the column labelled ‘#RSRZ > 2’ contains the number (and percentage) of RSRZ outliers, followed by percent RSRZ outliers for the chain as percentile scores relative to all X-ray entries and entries of similar resolution. The OWAB column contains the minimum, median, 95<sup>th</sup> percentile and maximum values of the occupancy-weighted average B-factor per residue. The column labelled ‘Q < 0.9’ lists the number of (and percentage) of residues with an average occupancy less than 0.9.

Mol	Chain	Analysed	<RSRZ>	#RSRZ>2	OWAB(Å <sup>2</sup> )	Q<0.9
1	A	61/69 (88%)	-0.40	2 (3%) 49 54	8, 15, 27, 36	7 (11%)
1	B	61/69 (88%)	-0.12	0 100 100	9, 17, 37, 44	4 (6%)
All	All	122/138 (88%)	-0.26	2 (1%) 70 75	8, 16, 34, 44	11 (9%)

All (2) RSRZ outliers are listed below:

Mol	Chain	Res	Type	RSRZ
1	A	5	SER	2.3
1	A	63[A]	ARG	2.2

### 6.2 Non-standard residues in protein, DNA, RNA chains [i](#)

In the following table, the Atoms column lists the number of modelled atoms in the group and the number defined in the chemical component dictionary. The B-factors column lists the minimum, median, 95<sup>th</sup> percentile and maximum values of B factors of atoms in the group. The column labelled ‘Q < 0.9’ lists the number of atoms with occupancy less than 0.9.

Mol	Type	Chain	Res	Atoms	RSCC	RSR	B-factors(Å <sup>2</sup> )	Q<0.9
1	CME	B	46[A]	10/11	0.96	0.08	14,17,21,30	21
1	CME	B	46[B]	6/11	0.96	0.08	16,17,22,30	11
1	CME	A	46	10/11	0.98	0.06	13,14,16,30	9

### 6.3 Carbohydrates [i](#)

There are no monosaccharides in this entry.

## 6.4 Ligands

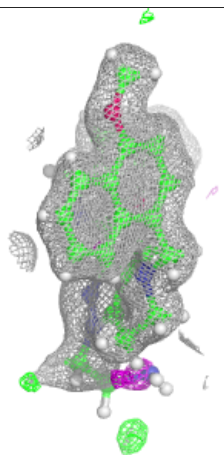
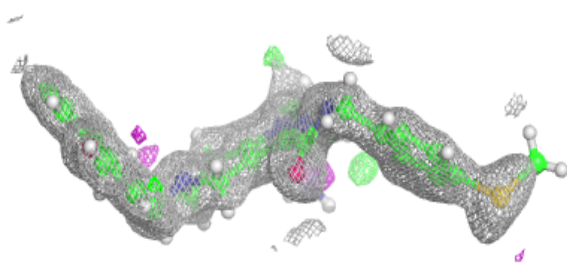
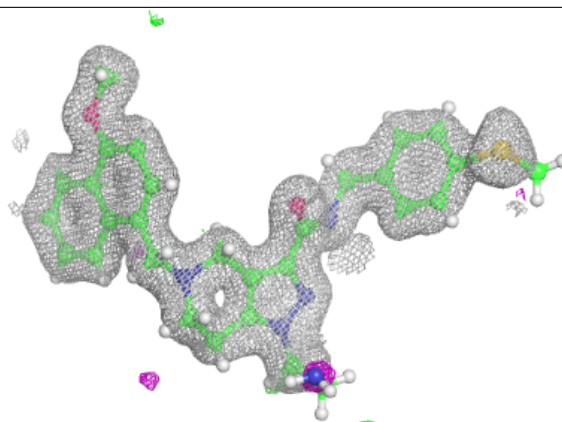
In the following table, the Atoms column lists the number of modelled atoms in the group and the number defined in the chemical component dictionary. The B-factors column lists the minimum, median, 95<sup>th</sup> percentile and maximum values of B factors of atoms in the group. The column labelled 'Q< 0.9' lists the number of atoms with occupancy less than 0.9.

Mol	Type	Chain	Res	Atoms	RSCC	RSR	B-factors(Å <sup>2</sup> )	Q<0.9
3	EDO	B	103	4/4	0.77	0.12	30,65,68,69	1
3	EDO	A	106	4/4	0.82	0.09	30,58,69,70	1
3	EDO	A	105	4/4	0.82	0.10	30,42,50,52	1
3	EDO	A	107	4/4	0.84	0.10	30,63,72,74	1
4	MLI	B	104	7/7	0.86	0.09	36,44,46,46	0
3	EDO	A	104	4/4	0.87	0.11	30,40,52,54	1
3	EDO	A	102	4/4	0.91	0.09	25,30,42,54	1
3	EDO	B	102	4/4	0.91	0.10	21,33,38,38	1
3	EDO	A	103	4/4	0.93	0.09	30,39,41,43	10
5	NA	B	106	1/1	0.94	0.14	47,47,47,47	0
5	NA	B	107	1/1	0.94	0.12	43,43,43,43	0
4	MLI	A	108	7/7	0.96	0.06	22,23,25,31	0
5	NA	B	105	1/1	0.97	0.09	27,27,27,27	0
2	OJN	B	101	37/37	0.98	0.05	13,19,46,54	0
2	OJN	A	101	37/37	0.98	0.06	11,18,38,44	0
5	NA	B	108	1/1	0.99	0.04	16,16,16,16	0
5	NA	A	109	1/1	1.00	0.02	18,18,18,18	0
6	CL	B	109	1/1	1.00	0.01	13,13,13,13	0

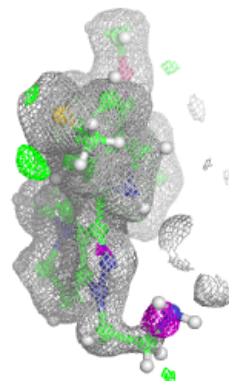
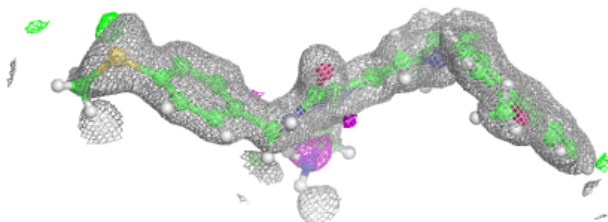
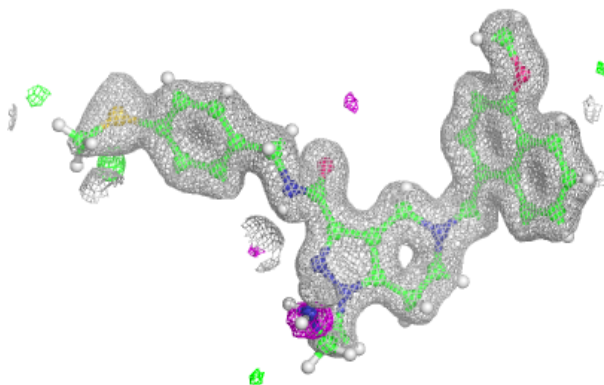
The following is a graphical depiction of the model fit to experimental electron density of all instances of the Ligand of Interest. In addition, ligands with molecular weight > 250 and outliers as shown on the geometry validation Tables will also be included. Each fit is shown from different orientation to approximate a three-dimensional view.

**Electron density around OJN B 101:**

$2mF_o-DF_c$  (at 0.7 rmsd) in gray  
 $mF_o-DF_c$  (at 3 rmsd) in purple (negative)  
and green (positive)

**Electron density around OJN A 101:**

$2mF_o-DF_c$  (at 0.7 rmsd) in gray  
 $mF_o-DF_c$  (at 3 rmsd) in purple (negative)  
and green (positive)



## 6.5 Other polymers [i](#)

There are no such residues in this entry.