



Full wwPDB X-ray Structure Validation Report ⓘ

Oct 15, 2024 – 03:45 pm BST

PDB ID : 8QUF
Title : carbonic anhydrase XII mimic in complex with 2-(3-((N-(4-sulfamoylbenzyl)pyridine-3-sulfonamido)methyl)phenoxy)acetic acid
Authors : Angeli, A.; Ferraroni, M.
Deposited on : 2023-10-16
Resolution : 1.14 Å(reported)

This is a Full wwPDB X-ray Structure Validation Report for a publicly released PDB entry.

We welcome your comments at validation@mail.wwpdb.org

A user guide is available at

<https://www.wwpdb.org/validation/2017/XrayValidationReportHelp>

with specific help available everywhere you see the ⓘ symbol.

The types of validation reports are described at

<http://www.wwpdb.org/validation/2017/FAQs#types>.

The following versions of software and data (see [references ⓘ](#)) were used in the production of this report:

MolProbity : 4.02b-467
Mogul : 1.8.4, CSD as541be (2020)
Xtriage (Phenix) : 1.13
EDS : 3.0
buster-report : 1.1.7 (2018)
Percentile statistics : 20231227.v01 (using entries in the PDB archive December 27th 2023)
CCP4 : 9.0.003 (Gargrove)
Density-Fitness : 1.0.11
Ideal geometry (proteins) : Engh & Huber (2001)
Ideal geometry (DNA, RNA) : Parkinson et al. (1996)
Validation Pipeline (wwPDB-VP) : 2.39

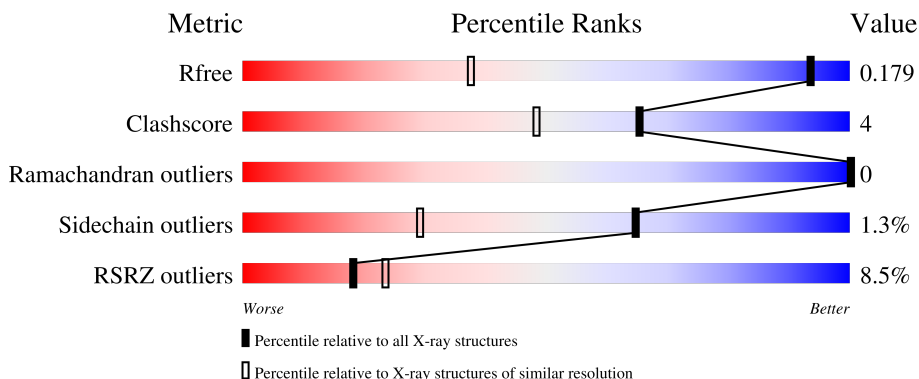
1 Overall quality at a glance

The following experimental techniques were used to determine the structure:

X-RAY DIFFRACTION

The reported resolution of this entry is 1.14 Å.

Percentile scores (ranging between 0-100) for global validation metrics of the entry are shown in the following graphic. The table shows the number of entries on which the scores are based.



Metric	Whole archive (#Entries)	Similar resolution (#Entries, resolution range(Å))
R_{free}	164625	1095 (1.16-1.12)
Clashscore	180529	1248 (1.16-1.12)
Ramachandran outliers	177936	1224 (1.16-1.12)
Sidechain outliers	177891	1224 (1.16-1.12)
RSRZ outliers	164620	1095 (1.16-1.12)

The table below summarises the geometric issues observed across the polymeric chains and their fit to the electron density. The red, orange, yellow and green segments of the lower bar indicate the fraction of residues that contain outliers for ≥ 3 , 2, 1 and 0 types of geometric quality criteria respectively. A grey segment represents the fraction of residues that are not modelled. The numeric value for each fraction is indicated below the corresponding segment, with a dot representing fractions $\leq 5\%$. The upper red bar (where present) indicates the fraction of residues that have poor fit to the electron density. The numeric value is given above the bar.

Mol	Chain	Length	Quality of chain
1	AAA	260	

2 Entry composition [i](#)

There are 5 unique types of molecules in this entry. The entry contains 2488 atoms, of which 0 are hydrogens and 0 are deuteriums.

In the tables below, the ZeroOcc column contains the number of atoms modelled with zero occupancy, the AltConf column contains the number of residues with at least one atom in alternate conformation and the Trace column contains the number of residues modelled with at most 2 atoms.

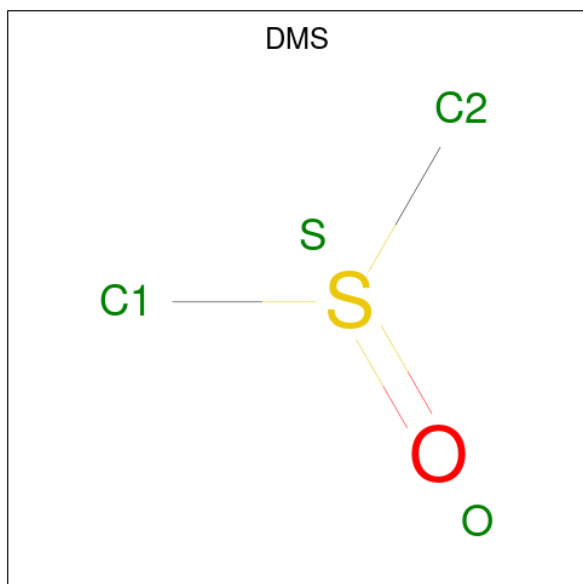
- Molecule 1 is a protein called Carbonic anhydrase 2.

Mol	Chain	Residues	Atoms					ZeroOcc	AltConf	Trace
			Total	C	N	O	S			
1	AAA	260	2144	1364	374	405	1	0	11	0

There are 9 discrepancies between the modelled and reference sequences:

Chain	Residue	Modelled	Actual	Comment	Reference
AAA	65	SER	ALA	engineered mutation	UNP P00918
AAA	67	LYS	ASN	engineered mutation	UNP P00918
AAA	69	ASN	GLU	engineered mutation	UNP P00918
AAA	91	THR	ILE	engineered mutation	UNP P00918
AAA	131	ALA	PHE	conflict	UNP P00918
AAA	132	SER	GLY	conflict	UNP P00918
AAA	135	SER	VAL	conflict	UNP P00918
AAA	204	ASN	LEU	engineered mutation	UNP P00918
AAA	206	THR	CYS	conflict	UNP P00918

- Molecule 2 is DIMETHYL SULFOXIDE (three-letter code: DMS) (formula: C₂H₆OS).

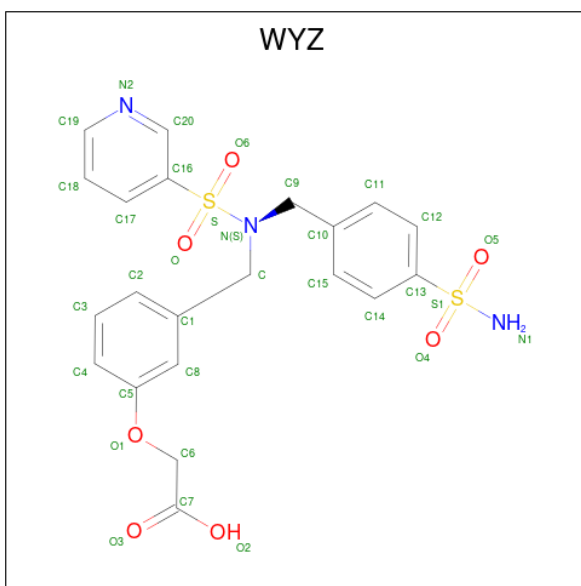


Mol	Chain	Residues	Atoms				ZeroOcc	AltConf
2	AAA	1	Total	C	O	S	0	0
			4	2	1	1		

- Molecule 3 is ZINC ION (three-letter code: ZN) (formula: Zn).

Mol	Chain	Residues	Atoms		ZeroOcc	AltConf
3	AAA	1	Total	Zn	0	0
			1	1		

- Molecule 4 is 2-[3-[[pyridin-3-ylsulfonyl-[(4-sulfamoylphenyl)methyl]amino]methyl]phenoxy]ethanoic acid (three-letter code: WYZ) (formula: C₂₁H₂₁N₃O₇S₂) (labeled as "Ligand of Interest" by depositor).



Mol	Chain	Residues	Atoms					ZeroOcc	AltConf
4	AAA	1	Total	C	N	O	S	0	0
			33	21	3	7	2		
4	AAA	1	Total	C	N	O	S	0	0
			33	21	3	7	2		

- Molecule 5 is water.

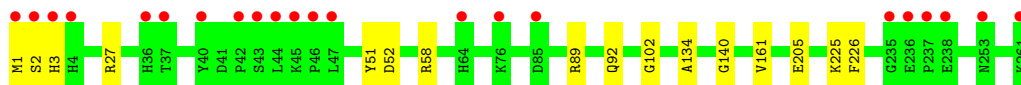
Mol	Chain	Residues	Atoms		ZeroOcc	AltConf
5	AAA	273	Total	O	0	0
			273	273		

3 Residue-property plots [i](#)

These plots are drawn for all protein, RNA, DNA and oligosaccharide chains in the entry. The first graphic for a chain summarises the proportions of the various outlier classes displayed in the second graphic. The second graphic shows the sequence view annotated by issues in geometry and electron density. Residues are color-coded according to the number of geometric quality criteria for which they contain at least one outlier: green = 0, yellow = 1, orange = 2 and red = 3 or more. A red dot above a residue indicates a poor fit to the electron density ($RSRZ > 2$). Stretches of 2 or more consecutive residues without any outlier are shown as a green connector. Residues present in the sample, but not in the model, are shown in grey.

- Molecule 1: Carbonic anhydrase 2

Chain AAA:  8% 94% 6%



4 Data and refinement statistics i

Property	Value	Source
Space group	P 1 21 1	Depositor
Cell constants a, b, c, α , β , γ	42.17Å 41.54Å 71.74Å 90.00° 104.10° 90.00°	Depositor
Resolution (Å)	40.93 – 1.14 40.93 – 1.14	Depositor EDS
% Data completeness (in resolution range)	99.5 (40.93-1.14) 99.5 (40.93-1.14)	Depositor EDS
R_{merge}	0.06	Depositor
R_{sym}	(Not available)	Depositor
$\langle I/\sigma(I) \rangle$ ¹	2.15 (at 1.14Å)	Xtrriage
Refinement program	REFMAC 5.8.0258	Depositor
R, R_{free}	0.164 , 0.178 0.165 , 0.179	Depositor DCC
R_{free} test set	4463 reflections (5.09%)	wwPDB-VP
Wilson B-factor (Å ²)	12.1	Xtrriage
Anisotropy	0.036	Xtrriage
Bulk solvent k_{sol} (e/Å ³), B_{sol} (Å ²)	0.37 , 33.3	EDS
L-test for twinning ²	$\langle L \rangle = 0.50$, $\langle L^2 \rangle = 0.33$	Xtrriage
Estimated twinning fraction	0.019 for h,-k,-h-l	Xtrriage
F_o, F_c correlation	0.97	EDS
Total number of atoms	2488	wwPDB-VP
Average B, all atoms (Å ²)	17.0	wwPDB-VP

Xtrriage's analysis on translational NCS is as follows: *The largest off-origin peak in the Patterson function is 8.80% of the height of the origin peak. No significant pseudotranslation is detected.*

¹Intensities estimated from amplitudes.

²Theoretical values of $\langle |L| \rangle$, $\langle L^2 \rangle$ for acentric reflections are 0.5, 0.333 respectively for untwinned datasets, and 0.375, 0.2 for perfectly twinned datasets.

5 Model quality [i](#)

5.1 Standard geometry [i](#)

Bond lengths and bond angles in the following residue types are not validated in this section: WYZ, DMS, ZN

The Z score for a bond length (or angle) is the number of standard deviations the observed value is removed from the expected value. A bond length (or angle) with $|Z| > 5$ is considered an outlier worth inspection. RMSZ is the root-mean-square of all Z scores of the bond lengths (or angles).

Mol	Chain	Bond lengths		Bond angles	
		RMSZ	# Z >5	RMSZ	# Z >5
1	AAA	0.79	0/2212	0.91	4/2999 (0.1%)

There are no bond length outliers.

All (4) bond angle outliers are listed below:

Mol	Chain	Res	Type	Atoms	Z	Observed(°)	Ideal(°)
1	AAA	226	PHE	CB-CG-CD1	7.34	125.94	120.80
1	AAA	89	ARG	CG-CD-NE	-6.48	98.20	111.80
1	AAA	51	TYR	CB-CG-CD1	5.08	124.05	121.00
1	AAA	51	TYR	CB-CG-CD2	-5.03	117.98	121.00

There are no chirality outliers.

There are no planarity outliers.

5.2 Too-close contacts [i](#)

In the following table, the Non-H and H(model) columns list the number of non-hydrogen atoms and hydrogen atoms in the chain respectively. The H(added) column lists the number of hydrogen atoms added and optimized by MolProbity. The Clashes column lists the number of clashes within the asymmetric unit, whereas Symm-Clashes lists symmetry-related clashes.

Mol	Chain	Non-H	H(model)	H(added)	Clashes	Symm-Clashes
1	AAA	2144	0	2080	13	0
2	AAA	4	0	6	2	0
3	AAA	1	0	0	0	0
4	AAA	66	0	0	3	0
5	AAA	273	0	0	4	0
All	All	2488	0	2086	16	0

The all-atom clashscore is defined as the number of clashes found per 1000 atoms (including hydrogen atoms). The all-atom clashscore for this structure is 4.

All (16) close contacts within the same asymmetric unit are listed below, sorted by their clash magnitude.

Atom-1	Atom-2	Interatomic distance (Å)	Clash overlap (Å)
1:AAA:161:VAL:CG1	1:AAA:225:LYS:HD2	2.30	0.61
1:AAA:1:MET:CB	5:AAA:611:HOH:O	2.49	0.59
1:AAA:3:HIS:HE1	5:AAA:641:HOH:O	1.85	0.58
4:AAA:304:WYZ:C7	4:AAA:304:WYZ:C8	2.83	0.55
1:AAA:134:ALA:O	1:AAA:140:GLY:HA3	2.11	0.51
1:AAA:3:HIS:CE1	5:AAA:641:HOH:O	2.63	0.48
1:AAA:161:VAL:CG1	1:AAA:225:LYS:CD	2.91	0.47
4:AAA:304:WYZ:C8	4:AAA:304:WYZ:O3	2.65	0.45
1:AAA:58:ARG:HH12	2:AAA:301:DMS:C1	2.29	0.44
1:AAA:58:ARG:HH12	2:AAA:301:DMS:H11	1.82	0.44
1:AAA:27[A]:ARG:HG2	1:AAA:27[A]:ARG:O	2.18	0.43
1:AAA:161:VAL:HG13	1:AAA:225:LYS:CD	2.49	0.43
1:AAA:161:VAL:HG13	1:AAA:225:LYS:HD2	2.02	0.41
4:AAA:304:WYZ:O3	4:AAA:304:WYZ:O	2.39	0.41
1:AAA:27[B]:ARG:HG3	1:AAA:205:GLU:HB3	2.03	0.40
1:AAA:102:GLY:HA2	5:AAA:459:HOH:O	2.22	0.40

There are no symmetry-related clashes.

5.3 Torsion angles [i](#)

5.3.1 Protein backbone [i](#)

In the following table, the Percentiles column shows the percent Ramachandran outliers of the chain as a percentile score with respect to all X-ray entries followed by that with respect to entries of similar resolution.

The Analysed column shows the number of residues for which the backbone conformation was analysed, and the total number of residues.

Mol	Chain	Analysed	Favoured	Allowed	Outliers	Percentiles
1	AAA	269/260 (104%)	256 (95%)	13 (5%)	0	100 100

There are no Ramachandran outliers to report.

5.3.2 Protein sidechains [i](#)

In the following table, the Percentiles column shows the percent sidechain outliers of the chain as a percentile score with respect to all X-ray entries followed by that with respect to entries of similar resolution.

The Analysed column shows the number of residues for which the sidechain conformation was analysed, and the total number of residues.

Mol	Chain	Analysed	Rotameric	Outliers	Percentiles
1	AAA	235/226 (104%)	232 (99%)	3 (1%)	65 29

All (3) residues with a non-rotameric sidechain are listed below:

Mol	Chain	Res	Type
1	AAA	2	SER
1	AAA	52	ASP
1	AAA	92	GLN

Sometimes sidechains can be flipped to improve hydrogen bonding and reduce clashes. There are no such sidechains identified.

5.3.3 RNA [i](#)

There are no RNA molecules in this entry.

5.4 Non-standard residues in protein, DNA, RNA chains [i](#)

There are no non-standard protein/DNA/RNA residues in this entry.

5.5 Carbohydrates [i](#)

There are no oligosaccharides in this entry.

5.6 Ligand geometry [i](#)

Of 4 ligands modelled in this entry, 1 is monoatomic - leaving 3 for Mogul analysis.

In the following table, the Counts columns list the number of bonds (or angles) for which Mogul statistics could be retrieved, the number of bonds (or angles) that are observed in the model and the number of bonds (or angles) that are defined in the Chemical Component Dictionary. The Link column lists molecule types, if any, to which the group is linked. The Z score for a bond

length (or angle) is the number of standard deviations the observed value is removed from the expected value. A bond length (or angle) with $|Z| > 2$ is considered an outlier worth inspection. RMSZ is the root-mean-square of all Z scores of the bond lengths (or angles).

Mol	Type	Chain	Res	Link	Bond lengths			Bond angles		
					Counts	RMSZ	# Z > 2	Counts	RMSZ	# Z > 2
4	WYZ	AAA	303	-	35,35,35	2.14	5 (14%)	50,50,50	2.40	9 (18%)
2	DMS	AAA	301	-	3,3,3	0.50	0	3,3,3	0.26	0
4	WYZ	AAA	304	3	35,35,35	0.57	0	50,50,50	0.86	3 (6%)

In the following table, the Chirals column lists the number of chiral outliers, the number of chiral centers analysed, the number of these observed in the model and the number defined in the Chemical Component Dictionary. Similar counts are reported in the Torsion and Rings columns. '2' means no outliers of that kind were identified.

Mol	Type	Chain	Res	Link	Chirals	Torsions	Rings
4	WYZ	AAA	303	-	-	19/31/31/31	0/3/3/3
4	WYZ	AAA	304	3	-	16/31/31/31	0/3/3/3

All (5) bond length outliers are listed below:

Mol	Chain	Res	Type	Atoms	Z	Observed(Å)	Ideal(Å)
4	AAA	303	WYZ	S-N	7.65	1.74	1.63
4	AAA	303	WYZ	C9-N	6.44	1.59	1.48
4	AAA	303	WYZ	S1-N1	-5.34	1.49	1.60
4	AAA	303	WYZ	C9-C10	3.21	1.57	1.51
4	AAA	303	WYZ	O4-S1	3.06	1.49	1.43

All (12) bond angle outliers are listed below:

Mol	Chain	Res	Type	Atoms	Z	Observed(°)	Ideal(°)
4	AAA	303	WYZ	C10-C9-N	11.84	135.96	112.15
4	AAA	303	WYZ	C-N-S	-5.97	103.39	117.35
4	AAA	303	WYZ	C9-N-S	5.74	130.79	117.35
4	AAA	303	WYZ	O4-S1-O5	-4.24	111.80	118.76
4	AAA	303	WYZ	O5-S1-N1	3.99	113.29	107.36
4	AAA	303	WYZ	C-N-C9	-3.06	109.85	116.21
4	AAA	303	WYZ	C1-C-N	2.63	117.44	112.15
4	AAA	304	WYZ	C10-C9-N	2.33	116.84	112.15
4	AAA	303	WYZ	O6-S-N	-2.26	104.63	106.69
4	AAA	304	WYZ	O4-S1-N1	2.21	110.64	107.36
4	AAA	304	WYZ	O4-S1-C13	-2.16	104.94	107.35
4	AAA	303	WYZ	C16-S-N	2.14	109.85	107.30

There are no chirality outliers.

All (35) torsion outliers are listed below:

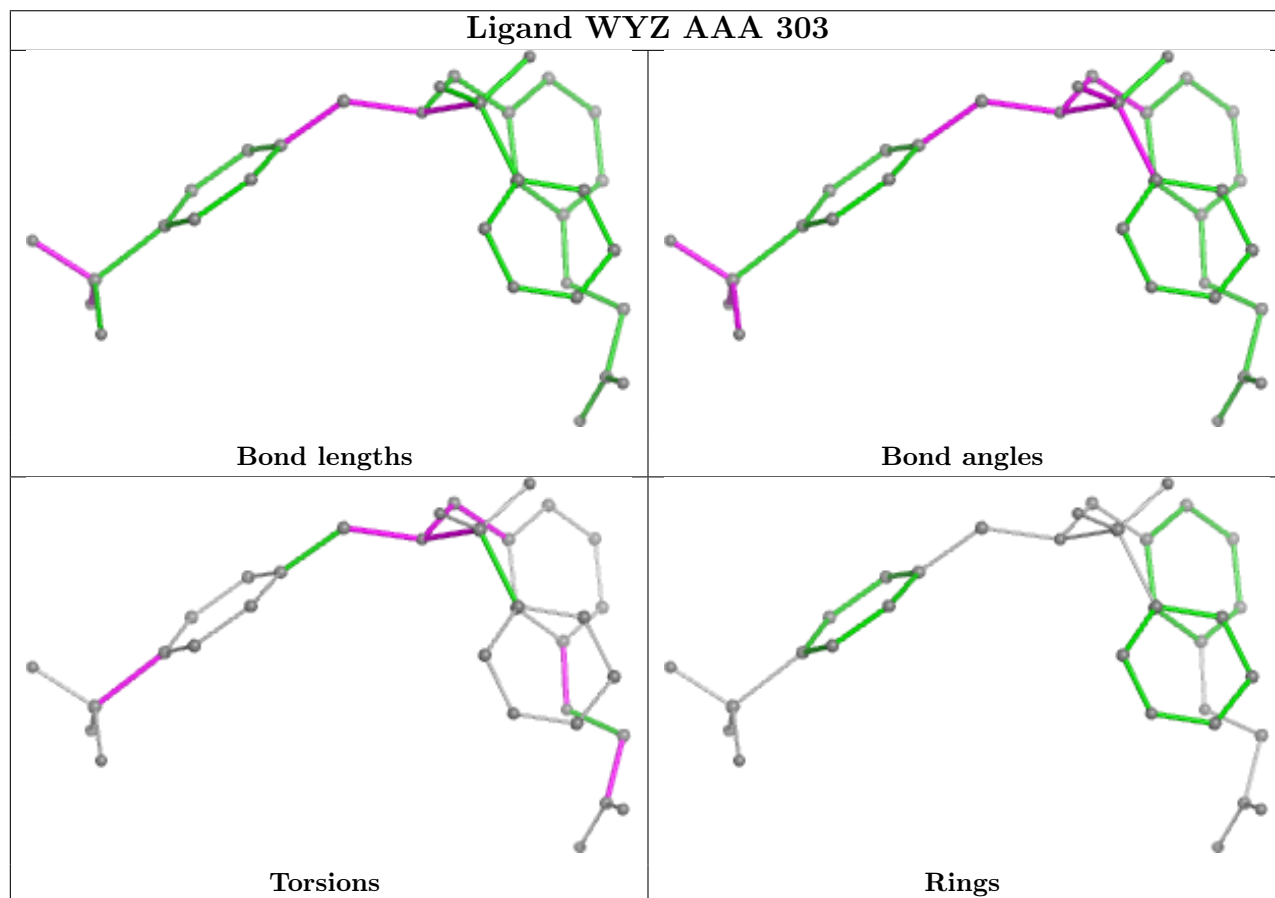
Mol	Chain	Res	Type	Atoms
4	AAA	304	WYZ	C17-C16-S-N
4	AAA	303	WYZ	O1-C6-C7-O2
4	AAA	304	WYZ	O1-C6-C7-O2
4	AAA	303	WYZ	C8-C5-O1-C6
4	AAA	304	WYZ	C20-C16-S-N
4	AAA	303	WYZ	C4-C5-O1-C6
4	AAA	304	WYZ	O1-C6-C7-O3
4	AAA	303	WYZ	C12-C13-S1-O4
4	AAA	304	WYZ	C17-C16-S-O
4	AAA	303	WYZ	C14-C13-S1-O4
4	AAA	303	WYZ	C12-C13-S1-N1
4	AAA	303	WYZ	C9-N-S-O
4	AAA	303	WYZ	O1-C6-C7-O3
4	AAA	303	WYZ	C14-C13-S1-N1
4	AAA	304	WYZ	C8-C5-O1-C6
4	AAA	303	WYZ	C-N-S-O6
4	AAA	304	WYZ	C-N-S-O6
4	AAA	304	WYZ	C4-C5-O1-C6
4	AAA	303	WYZ	C9-N-S-O6
4	AAA	303	WYZ	C1-C-N-C9
4	AAA	304	WYZ	C9-N-S-O6
4	AAA	303	WYZ	C9-N-S-C16
4	AAA	304	WYZ	C-N-S-O
4	AAA	303	WYZ	C-N-S-O
4	AAA	303	WYZ	C1-C-N-S
4	AAA	303	WYZ	N-C-C1-C2
4	AAA	303	WYZ	N-C-C1-C8
4	AAA	304	WYZ	C-N-S-C16
4	AAA	304	WYZ	C12-C13-S1-O5
4	AAA	304	WYZ	C14-C13-S1-O5
4	AAA	303	WYZ	C-N-S-C16
4	AAA	303	WYZ	C10-C9-N-C
4	AAA	304	WYZ	C20-C16-S-O
4	AAA	304	WYZ	C9-N-S-C16
4	AAA	304	WYZ	C1-C-N-S

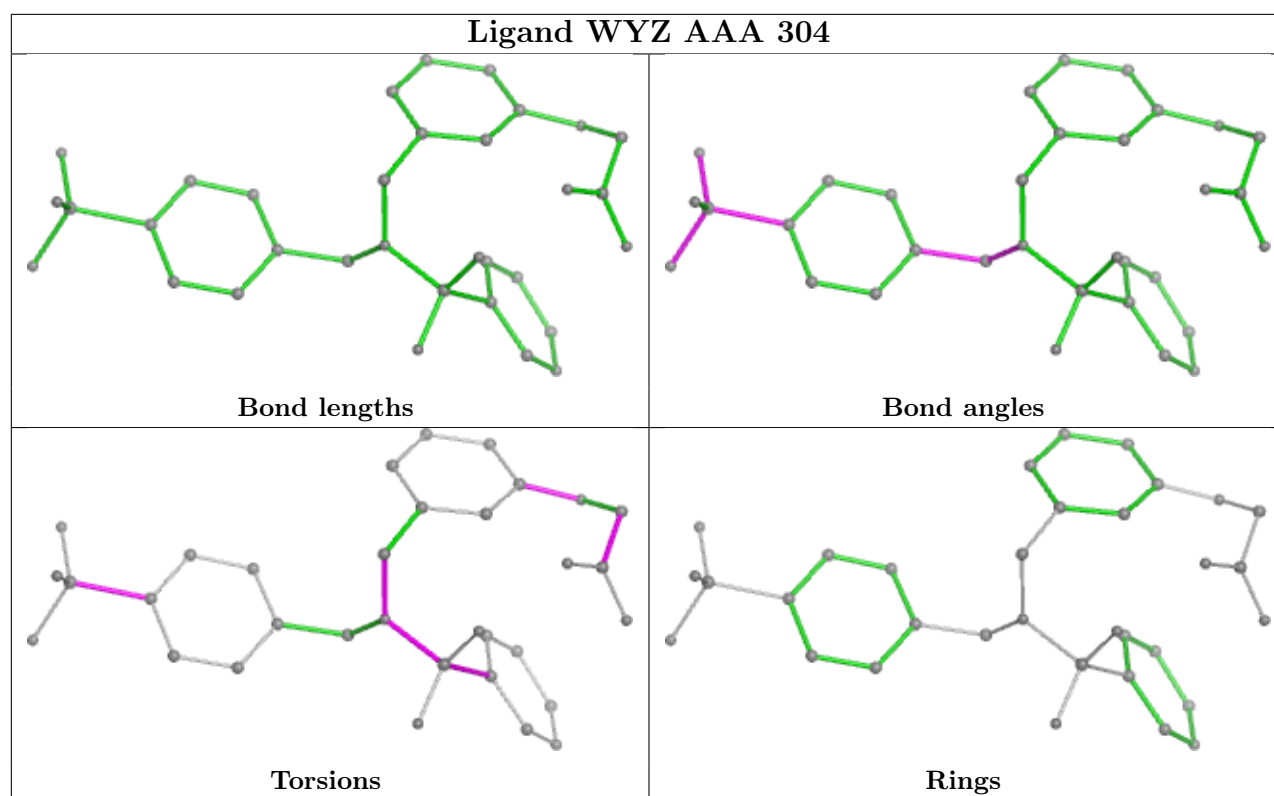
There are no ring outliers.

2 monomers are involved in 5 short contacts:

Mol	Chain	Res	Type	Clashes	Symm-Clashes
2	AAA	301	DMS	2	0
4	AAA	304	WYZ	3	0

The following is a two-dimensional graphical depiction of Mogul quality analysis of bond lengths, bond angles, torsion angles, and ring geometry for all instances of the Ligand of Interest. In addition, ligands with molecular weight > 250 and outliers as shown on the validation Tables will also be included. For torsion angles, if less than 5% of the Mogul distribution of torsion angles is within 10 degrees of the torsion angle in question, then that torsion angle is considered an outlier. Any bond that is central to one or more torsion angles identified as an outlier by Mogul will be highlighted in the graph. For rings, the root-mean-square deviation (RMSD) between the ring in question and similar rings identified by Mogul is calculated over all ring torsion angles. If the average RMSD is greater than 60 degrees and the minimal RMSD between the ring in question and any Mogul-identified rings is also greater than 60 degrees, then that ring is considered an outlier. The outliers are highlighted in purple. The color gray indicates Mogul did not find sufficient equivalents in the CSD to analyse the geometry.





5.7 Other polymers [i](#)

There are no such residues in this entry.

5.8 Polymer linkage issues [i](#)

There are no chain breaks in this entry.

6 Fit of model and data [i](#)

6.1 Protein, DNA and RNA chains [i](#)

In the following table, the column labelled ‘#RSRZ> 2’ contains the number (and percentage) of RSRZ outliers, followed by percent RSRZ outliers for the chain as percentile scores relative to all X-ray entries and entries of similar resolution. The OWAB column contains the minimum, median, 95th percentile and maximum values of the occupancy-weighted average B-factor per residue. The column labelled ‘Q< 0.9’ lists the number of (and percentage) of residues with an average occupancy less than 0.9.

Mol	Chain	Analysed	<RSRZ>	#RSRZ>2	OWAB(Å ²)	Q<0.9
1	AAA	260/260 (100%)	0.60	22 (8%) 18 23	5, 13, 29, 60	13 (5%)

All (22) RSRZ outliers are listed below:

Mol	Chain	Res	Type	RSRZ
1	AAA	253	ASN	6.0
1	AAA	235	GLY	5.2
1	AAA	2	SER	4.4
1	AAA	42	PRO	4.2
1	AAA	43	SER	4.1
1	AAA	237	PRO	4.1
1	AAA	46	PRO	3.9
1	AAA	1	MET	3.9
1	AAA	3	HIS	3.6
1	AAA	40	TYR	3.1
1	AAA	36	HIS	2.9
1	AAA	44	LEU	2.8
1	AAA	238	GLU	2.6
1	AAA	4	HIS	2.5
1	AAA	261	LYS	2.5
1	AAA	236	GLU	2.4
1	AAA	47	LEU	2.3
1	AAA	45	LYS	2.3
1	AAA	64[A]	HIS	2.3
1	AAA	85	ASP	2.2
1	AAA	37[A]	THR	2.1
1	AAA	76	LYS	2.0

6.2 Non-standard residues in protein, DNA, RNA chains [i](#)

There are no non-standard protein/DNA/RNA residues in this entry.

6.3 Carbohydrates [i](#)

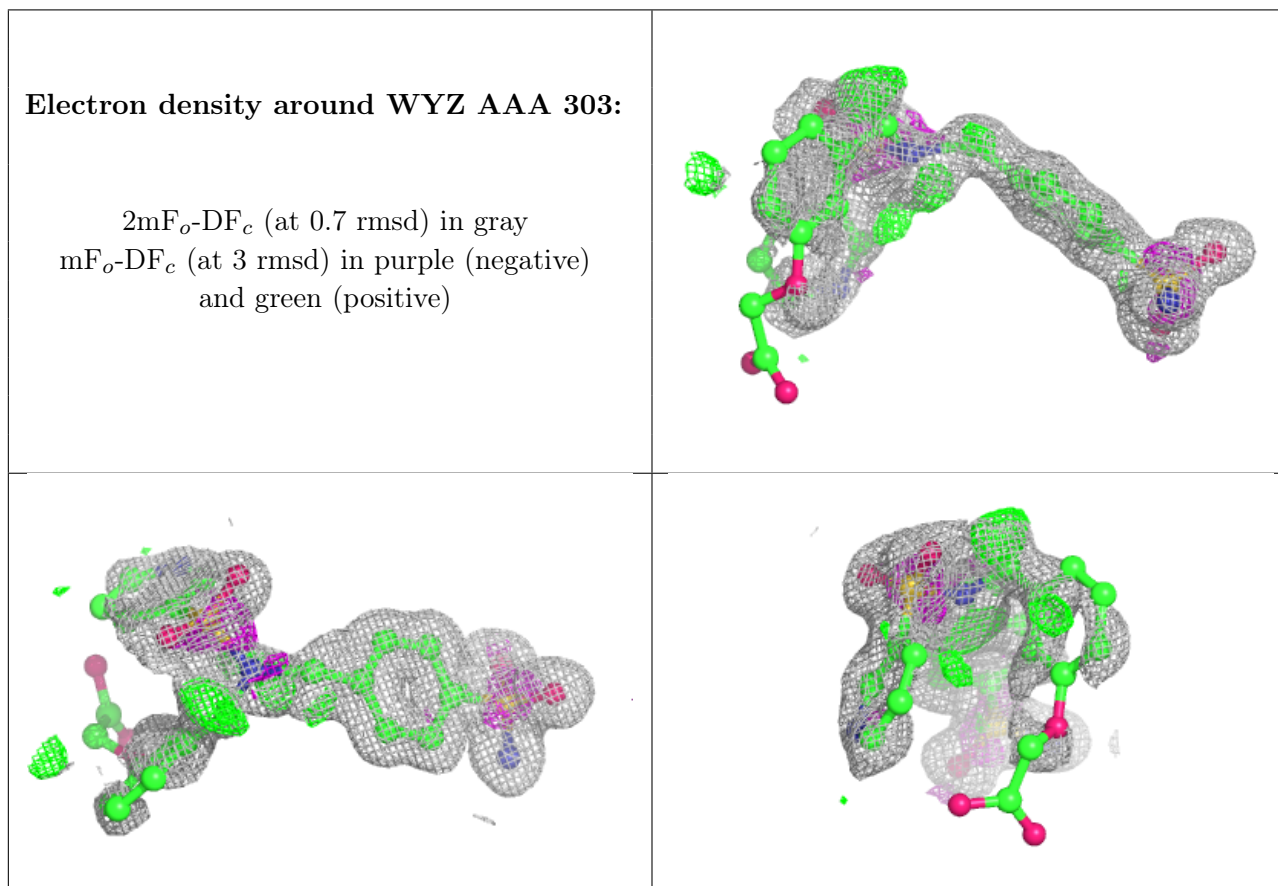
There are no monosaccharides in this entry.

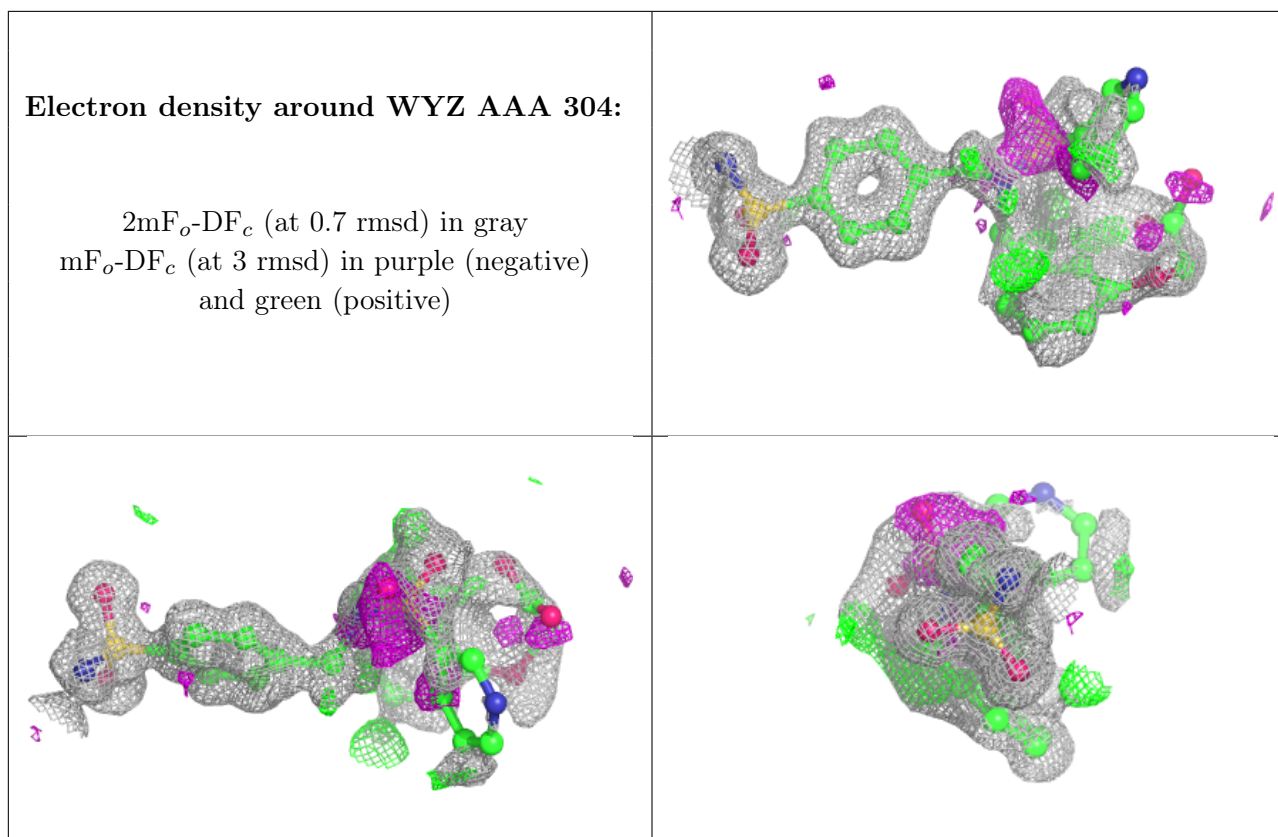
6.4 Ligands [i](#)

In the following table, the Atoms column lists the number of modelled atoms in the group and the number defined in the chemical component dictionary. The B-factors column lists the minimum, median, 95th percentile and maximum values of B factors of atoms in the group. The column labelled 'Q< 0.9' lists the number of atoms with occupancy less than 0.9.

Mol	Type	Chain	Res	Atoms	RSCC	RSR	B-factors(Å ²)	Q<0.9
2	DMS	AAA	301	4/4	0.82	0.20	33,41,46,50	0
4	WYZ	AAA	303	33/33	0.93	0.14	15,30,77,80	0
4	WYZ	AAA	304	33/33	0.96	0.16	8,41,64,68	0
3	ZN	AAA	302	1/1	1.00	0.01	7,7,7,7	0

The following is a graphical depiction of the model fit to experimental electron density of all instances of the Ligand of Interest. In addition, ligands with molecular weight > 250 and outliers as shown on the geometry validation Tables will also be included. Each fit is shown from different orientation to approximate a three-dimensional view.





6.5 Other polymers [i](#)

There are no such residues in this entry.