



Full wwPDB X-ray Structure Validation Report ⓘ

Jul 25, 2023 – 10:24 am BST

PDB ID : 8PUN
Title : Old Yellow Enzyme from the thermophilic *Ferroplasma* sp. JA12
Authors : Polidori, N.; Gruber, K.
Deposited on : 2023-07-17
Resolution : 2.30 Å(reported)

This is a Full wwPDB X-ray Structure Validation Report for a publicly released PDB entry.

We welcome your comments at validation@mail.wwpdb.org

A user guide is available at

<https://www.wwpdb.org/validation/2017/XrayValidationReportHelp>

with specific help available everywhere you see the ⓘ symbol.

The types of validation reports are described at

<http://www.wwpdb.org/validation/2017/FAQs#types>.

The following versions of software and data (see [references ⓘ](#)) were used in the production of this report:

MolProbity : 4.02b-467
Mogul : 1.8.4, CSD as541be (2020)
Xtriage (Phenix) : 1.13
EDS : 2.34
buster-report : 1.1.7 (2018)
Percentile statistics : 20191225.v01 (using entries in the PDB archive December 25th 2019)
Refmac : 5.8.0158
CCP4 : 7.0.044 (Gargrove)
Ideal geometry (proteins) : Engh & Huber (2001)
Ideal geometry (DNA, RNA) : Parkinson et al. (1996)
Validation Pipeline (wwPDB-VP) : 2.34

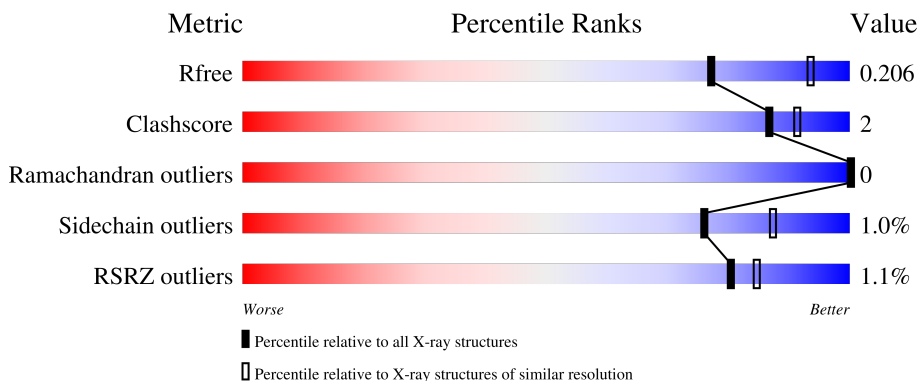
1 Overall quality at a glance

The following experimental techniques were used to determine the structure:

X-RAY DIFFRACTION

The reported resolution of this entry is 2.30 Å.

Percentile scores (ranging between 0-100) for global validation metrics of the entry are shown in the following graphic. The table shows the number of entries on which the scores are based.



Metric	Whole archive (#Entries)	Similar resolution (#Entries, resolution range(Å))
R_{free}	130704	5042 (2.30-2.30)
Clashscore	141614	5643 (2.30-2.30)
Ramachandran outliers	138981	5575 (2.30-2.30)
Sidechain outliers	138945	5575 (2.30-2.30)
RSRZ outliers	127900	4938 (2.30-2.30)

The table below summarises the geometric issues observed across the polymeric chains and their fit to the electron density. The red, orange, yellow and green segments of the lower bar indicate the fraction of residues that contain outliers for ≥ 3 , 2, 1 and 0 types of geometric quality criteria respectively. A grey segment represents the fraction of residues that are not modelled. The numeric value for each fraction is indicated below the corresponding segment, with a dot representing fractions $\leq 5\%$. The upper red bar (where present) indicates the fraction of residues that have poor fit to the electron density. The numeric value is given above the bar.

Mol	Chain	Length	Quality of chain
1	A	373	 89% 6% 5%
1	B	373	 90% 6% 5%
1	C	373	 91% 5% 5%
1	D	373	 90% 5% 5%

The following table lists non-polymeric compounds, carbohydrate monomers and non-standard

residues in protein, DNA, RNA chains that are outliers for geometric or electron-density-fit criteria:

Mol	Type	Chain	Res	Chirality	Geometry	Clashes	Electron density
3	PEG	A	402	-	-	-	X
8	PGE	B	403	-	-	-	X

2 Entry composition [i](#)

There are 10 unique types of molecules in this entry. The entry contains 11933 atoms, of which 0 are hydrogens and 0 are deuteriums.

In the tables below, the ZeroOcc column contains the number of atoms modelled with zero occupancy, the AltConf column contains the number of residues with at least one atom in alternate conformation and the Trace column contains the number of residues modelled with at most 2 atoms.

- Molecule 1 is a protein called NADPH dehydrogenase.

Mol	Chain	Residues	Atoms					ZeroOcc	AltConf	Trace
			Total	C	N	O	S			
1	A	356	2775	1758	497	507	13	0	4	0
1	B	356	2757	1746	493	505	13	0	2	0
1	C	356	2773	1755	493	512	13	0	4	0
1	D	356	2772	1756	493	510	13	0	4	0

There are 76 discrepancies between the modelled and reference sequences:

Chain	Residue	Modelled	Actual	Comment	Reference
A	-18	MET	-	initiating methionine	UNP A0A0R0LNE8
A	-17	GLY	-	expression tag	UNP A0A0R0LNE8
A	-16	SER	-	expression tag	UNP A0A0R0LNE8
A	-15	SER	-	expression tag	UNP A0A0R0LNE8
A	-14	HIS	-	expression tag	UNP A0A0R0LNE8
A	-13	HIS	-	expression tag	UNP A0A0R0LNE8
A	-12	HIS	-	expression tag	UNP A0A0R0LNE8
A	-11	HIS	-	expression tag	UNP A0A0R0LNE8
A	-10	HIS	-	expression tag	UNP A0A0R0LNE8
A	-9	HIS	-	expression tag	UNP A0A0R0LNE8
A	-8	SER	-	expression tag	UNP A0A0R0LNE8
A	-7	SER	-	expression tag	UNP A0A0R0LNE8
A	-6	GLY	-	expression tag	UNP A0A0R0LNE8
A	-5	LEU	-	expression tag	UNP A0A0R0LNE8
A	-4	VAL	-	expression tag	UNP A0A0R0LNE8
A	-3	PRO	-	expression tag	UNP A0A0R0LNE8
A	-2	ARG	-	expression tag	UNP A0A0R0LNE8
A	-1	GLY	-	expression tag	UNP A0A0R0LNE8
A	0	SER	-	expression tag	UNP A0A0R0LNE8
B	-18	MET	-	initiating methionine	UNP A0A0R0LNE8
B	-17	GLY	-	expression tag	UNP A0A0R0LNE8

Continued on next page...

Continued from previous page...

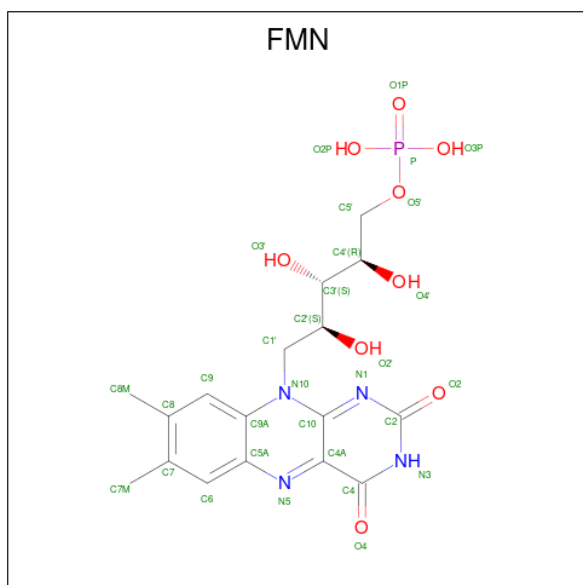
Chain	Residue	Modelled	Actual	Comment	Reference
B	-16	SER	-	expression tag	UNP A0A0R0LNE8
B	-15	SER	-	expression tag	UNP A0A0R0LNE8
B	-14	HIS	-	expression tag	UNP A0A0R0LNE8
B	-13	HIS	-	expression tag	UNP A0A0R0LNE8
B	-12	HIS	-	expression tag	UNP A0A0R0LNE8
B	-11	HIS	-	expression tag	UNP A0A0R0LNE8
B	-10	HIS	-	expression tag	UNP A0A0R0LNE8
B	-9	HIS	-	expression tag	UNP A0A0R0LNE8
B	-8	SER	-	expression tag	UNP A0A0R0LNE8
B	-7	SER	-	expression tag	UNP A0A0R0LNE8
B	-6	GLY	-	expression tag	UNP A0A0R0LNE8
B	-5	LEU	-	expression tag	UNP A0A0R0LNE8
B	-4	VAL	-	expression tag	UNP A0A0R0LNE8
B	-3	PRO	-	expression tag	UNP A0A0R0LNE8
B	-2	ARG	-	expression tag	UNP A0A0R0LNE8
B	-1	GLY	-	expression tag	UNP A0A0R0LNE8
B	0	SER	-	expression tag	UNP A0A0R0LNE8
C	-18	MET	-	initiating methionine	UNP A0A0R0LNE8
C	-17	GLY	-	expression tag	UNP A0A0R0LNE8
C	-16	SER	-	expression tag	UNP A0A0R0LNE8
C	-15	SER	-	expression tag	UNP A0A0R0LNE8
C	-14	HIS	-	expression tag	UNP A0A0R0LNE8
C	-13	HIS	-	expression tag	UNP A0A0R0LNE8
C	-12	HIS	-	expression tag	UNP A0A0R0LNE8
C	-11	HIS	-	expression tag	UNP A0A0R0LNE8
C	-10	HIS	-	expression tag	UNP A0A0R0LNE8
C	-9	HIS	-	expression tag	UNP A0A0R0LNE8
C	-8	SER	-	expression tag	UNP A0A0R0LNE8
C	-7	SER	-	expression tag	UNP A0A0R0LNE8
C	-6	GLY	-	expression tag	UNP A0A0R0LNE8
C	-5	LEU	-	expression tag	UNP A0A0R0LNE8
C	-4	VAL	-	expression tag	UNP A0A0R0LNE8
C	-3	PRO	-	expression tag	UNP A0A0R0LNE8
C	-2	ARG	-	expression tag	UNP A0A0R0LNE8
C	-1	GLY	-	expression tag	UNP A0A0R0LNE8
C	0	SER	-	expression tag	UNP A0A0R0LNE8
D	-18	MET	-	initiating methionine	UNP A0A0R0LNE8
D	-17	GLY	-	expression tag	UNP A0A0R0LNE8
D	-16	SER	-	expression tag	UNP A0A0R0LNE8
D	-15	SER	-	expression tag	UNP A0A0R0LNE8
D	-14	HIS	-	expression tag	UNP A0A0R0LNE8
D	-13	HIS	-	expression tag	UNP A0A0R0LNE8

Continued on next page...

Continued from previous page...

Chain	Residue	Modelled	Actual	Comment	Reference
D	-12	HIS	-	expression tag	UNP A0A0R0LNE8
D	-11	HIS	-	expression tag	UNP A0A0R0LNE8
D	-10	HIS	-	expression tag	UNP A0A0R0LNE8
D	-9	HIS	-	expression tag	UNP A0A0R0LNE8
D	-8	SER	-	expression tag	UNP A0A0R0LNE8
D	-7	SER	-	expression tag	UNP A0A0R0LNE8
D	-6	GLY	-	expression tag	UNP A0A0R0LNE8
D	-5	LEU	-	expression tag	UNP A0A0R0LNE8
D	-4	VAL	-	expression tag	UNP A0A0R0LNE8
D	-3	PRO	-	expression tag	UNP A0A0R0LNE8
D	-2	ARG	-	expression tag	UNP A0A0R0LNE8
D	-1	GLY	-	expression tag	UNP A0A0R0LNE8
D	0	SER	-	expression tag	UNP A0A0R0LNE8

- Molecule 2 is FLAVIN MONONUCLEOTIDE (three-letter code: FMN) (formula: C₁₇H₂₁N₄O₉P).



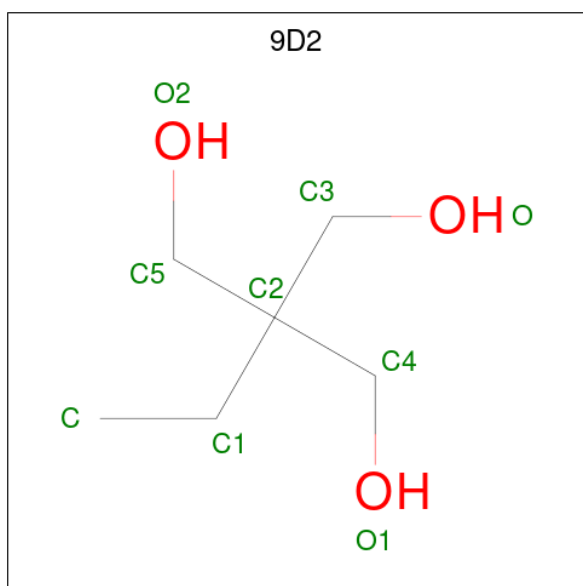
Mol	Chain	Residues	Atoms					ZeroOcc	AltConf
			Total	C	N	O	P		
2	A	1	Total	C	N	O	P	0	0
			31	17	4	9	1		
2	B	1	Total	C	N	O	P	0	0
			31	17	4	9	1		
2	C	1	Total	C	N	O	P	0	0
			31	17	4	9	1		
2	D	1	Total	C	N	O	P	0	0
			31	17	4	9	1		

- Molecule 3 is DI(HYDROXYETHYL)ETHER (three-letter code: PEG) (formula: C₄H₁₀O₃).



Mol	Chain	Residues	Atoms			ZeroOcc	AltConf
3	A	1	Total	C	O	0	0
			7	4	3		
3	A	1	Total	C	O	0	0
			7	4	3		
3	C	1	Total	C	O	0	0
			7	4	3		

- Molecule 4 is 2-ethyl-2-(hydroxymethyl)propane-1,3-diol (three-letter code: 9D2) (formula: $C_6H_{14}O_3$).



Mol	Chain	Residues	Atoms			ZeroOcc	AltConf
4	A	1	Total	C	O	0	0
			9	6	3		
4	B	1	Total	C	O	0	0
			9	6	3		

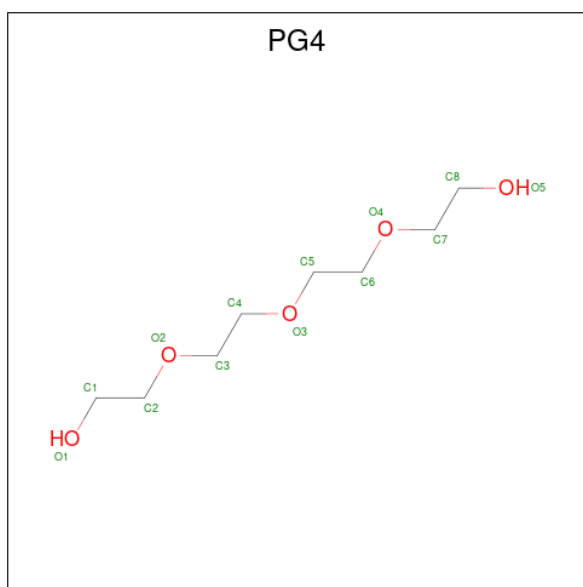
- Molecule 5 is YTTRIUM (III) ION (three-letter code: YT3) (formula: Y).

Mol	Chain	Residues	Atoms		ZeroOcc	AltConf
5	A	2	Total	Y	0	0
			2	2		
5	B	2	Total	Y	0	0
			2	2		
5	C	1	Total	Y	0	0
			1	1		
5	D	2	Total	Y	0	0
			2	2		

- Molecule 6 is CHLORIDE ION (three-letter code: CL) (formula: Cl).

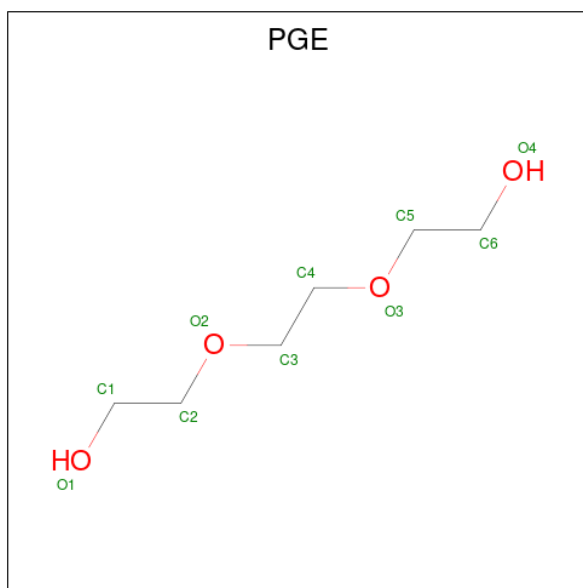
Mol	Chain	Residues	Atoms		ZeroOcc	AltConf
6	A	1	Total	Cl	0	0
			1	1		
6	B	1	Total	Cl	0	0
			1	1		
6	C	1	Total	Cl	0	0
			1	1		
6	D	2	Total	Cl	0	0
			2	2		

- Molecule 7 is TETRAETHYLENE GLYCOL (three-letter code: PG4) (formula: C₈H₁₈O₅).



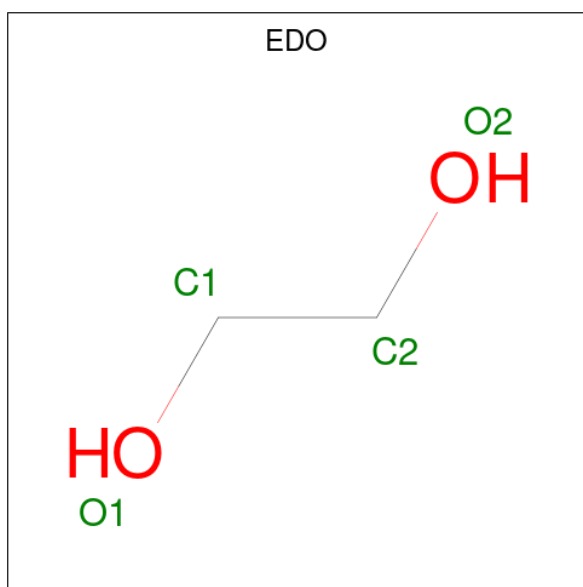
Mol	Chain	Residues	Atoms			ZeroOcc	AltConf
7	B	1	Total	C	O	0	0
			13	8	5		

- Molecule 8 is TRIETHYLENE GLYCOL (three-letter code: PGE) (formula: $C_6H_{14}O_4$).



Mol	Chain	Residues	Atoms			ZeroOcc	AltConf
8	B	1	Total	C	O	0	0
			10	6	4		

- Molecule 9 is 1,2-ETHANEDIOL (three-letter code: EDO) (formula: $C_2H_6O_2$).



Mol	Chain	Residues	Atoms	ZeroOcc	AltConf
9	C	1	Total C O 4 2 2	0	0
9	C	1	Total C O 4 2 2	0	0
9	D	1	Total C O 4 2 2	0	0
9	D	1	Total C O 4 2 2	0	0


- Molecule 10 is water.

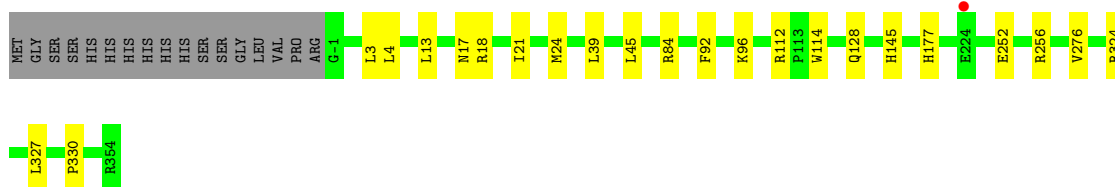
Mol	Chain	Residues	Atoms	ZeroOcc	AltConf
10	A	152	Total O 152 152	0	0
10	B	175	Total O 175 175	0	0
10	C	155	Total O 155 155	0	0
10	D	160	Total O 160 160	0	0

3 Residue-property plots [i](#)


These plots are drawn for all protein, RNA, DNA and oligosaccharide chains in the entry. The first graphic for a chain summarises the proportions of the various outlier classes displayed in the second graphic. The second graphic shows the sequence view annotated by issues in geometry and electron density. Residues are color-coded according to the number of geometric quality criteria for which they contain at least one outlier: green = 0, yellow = 1, orange = 2 and red = 3 or more. A red dot above a residue indicates a poor fit to the electron density ($RSRZ > 2$). Stretches of 2 or more consecutive residues without any outlier are shown as a green connector. Residues present in the sample, but not in the model, are shown in grey.

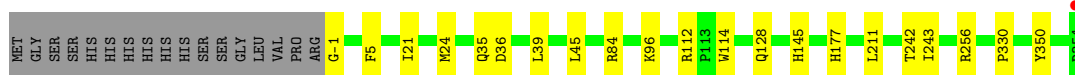
- Molecule 1: NADPH dehydrogenase

Chain A: 

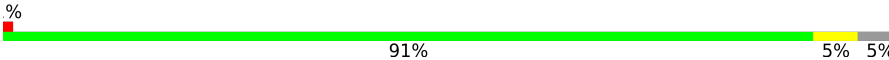


- Molecule 1: NADPH dehydrogenase

Chain B: 



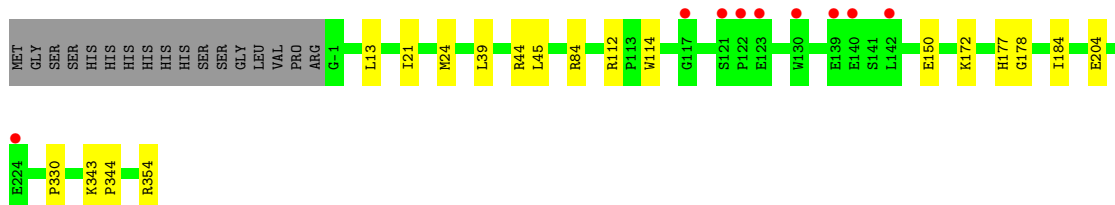
- Molecule 1: NADPH dehydrogenase

Chain C: 



- Molecule 1: NADPH dehydrogenase

Chain D: 



4 Data and refinement statistics

Property	Value	Source
Space group	P 41 2 2	Depositor
Cell constants a, b, c, α , β , γ	187.71Å 187.71Å 129.32Å 90.00° 90.00° 90.00°	Depositor
Resolution (Å)	48.30 – 2.30 48.30 – 2.30	Depositor EDS
% Data completeness (in resolution range)	99.5 (48.30-2.30) 99.7 (48.30-2.30)	Depositor EDS
R_{merge}	(Not available)	Depositor
R_{sym}	(Not available)	Depositor
$\langle I/\sigma(I) \rangle$ ¹	3.80 (at 2.29Å)	Xtrriage
Refinement program	PHENIX 1.17.1_3660	Depositor
R, R_{free}	0.180 , 0.205 0.181 , 0.206	Depositor DCC
R_{free} test set	5145 reflections (5.04%)	wwPDB-VP
Wilson B-factor (Å ²)	34.2	Xtrriage
Anisotropy	0.731	Xtrriage
Bulk solvent k_{sol} (e/Å ³), B_{sol} (Å ²)	0.33 , 37.6	EDS
L-test for twinning ²	$\langle L \rangle = 0.58$, $\langle L^2 \rangle = 0.43$	Xtrriage
Estimated twinning fraction	No twinning to report.	Xtrriage
F_o, F_c correlation	0.97	EDS
Total number of atoms	11933	wwPDB-VP
Average B, all atoms (Å ²)	39.0	wwPDB-VP

Xtrriage's analysis on translational NCS is as follows: *The analyses of the Patterson function reveals a significant off-origin peak that is 48.66 % of the origin peak, indicating pseudo-translational symmetry. The chance of finding a peak of this or larger height randomly in a structure without pseudo-translational symmetry is equal to 8.3355e-05. The detected translational NCS is most likely also responsible for the elevated intensity ratio.*

¹Intensities estimated from amplitudes.

²Theoretical values of $\langle |L| \rangle$, $\langle L^2 \rangle$ for acentric reflections are 0.5, 0.333 respectively for untwinned datasets, and 0.375, 0.2 for perfectly twinned datasets.

5 Model quality [i](#)

5.1 Standard geometry [i](#)

Bond lengths and bond angles in the following residue types are not validated in this section: YT3, 9D2, PGE, CL, PG4, EDO, PEG, FMN

The Z score for a bond length (or angle) is the number of standard deviations the observed value is removed from the expected value. A bond length (or angle) with $|Z| > 5$ is considered an outlier worth inspection. RMSZ is the root-mean-square of all Z scores of the bond lengths (or angles).

Mol	Chain	Bond lengths		Bond angles	
		RMSZ	# Z >5	RMSZ	# Z >5
1	A	0.26	0/2845	0.45	0/3864
1	B	0.26	0/2826	0.44	0/3837
1	C	0.26	0/2842	0.45	0/3859
1	D	0.26	0/2841	0.44	0/3858
All	All	0.26	0/11354	0.45	0/15418

There are no bond length outliers.

There are no bond angle outliers.

There are no chirality outliers.

There are no planarity outliers.

5.2 Too-close contacts [i](#)

In the following table, the Non-H and H(model) columns list the number of non-hydrogen atoms and hydrogen atoms in the chain respectively. The H(added) column lists the number of hydrogen atoms added and optimized by MolProbity. The Clashes column lists the number of clashes within the asymmetric unit, whereas Symm-Clashes lists symmetry-related clashes.

Mol	Chain	Non-H	H(model)	H(added)	Clashes	Symm-Clashes
1	A	2775	0	2739	15	0
1	B	2757	0	2722	15	0
1	C	2773	0	2727	10	0
1	D	2772	0	2732	11	0
2	A	31	0	19	1	0
2	B	31	0	19	1	0
2	C	31	0	19	1	0
2	D	31	0	19	1	0
3	A	14	0	20	3	0

Continued on next page...

Continued from previous page...

Mol	Chain	Non-H	H(model)	H(added)	Clashes	Symm-Clashes
3	C	7	0	10	1	0
4	A	9	0	0	0	0
4	B	9	0	0	0	0
5	A	2	0	0	0	0
5	B	2	0	0	0	0
5	C	1	0	0	0	0
5	D	2	0	0	0	0
6	A	1	0	0	0	0
6	B	1	0	0	0	0
6	C	1	0	0	0	0
6	D	2	0	0	0	0
7	B	13	0	18	5	0
8	B	10	0	14	2	0
9	C	8	0	12	1	0
9	D	8	0	12	1	0
10	A	152	0	0	0	0
10	B	175	0	0	0	0
10	C	155	0	0	0	0
10	D	160	0	0	1	0
All	All	11933	0	11082	47	0

The all-atom clashscore is defined as the number of clashes found per 1000 atoms (including hydrogen atoms). The all-atom clashscore for this structure is 2.

All (47) close contacts within the same asymmetric unit are listed below, sorted by their clash magnitude.

Atom-1	Atom-2	Interatomic distance (Å)	Clash overlap (Å)
1:C:39:LEU:HD12	1:D:39:LEU:HD12	1.67	0.76
1:B:36:ASP:HB2	7:B:401:PG4:H52	1.78	0.65
1:A:39:LEU:HD23	1:B:39:LEU:HD23	1.79	0.65
1:C:330:PRO:HG2	1:D:330:PRO:HG2	1.83	0.59
1:B:128:GLN:OE1	1:B:145:HIS:NE2	2.36	0.59
1:D:21:ILE:HG21	1:D:45:LEU:HD13	1.86	0.58
1:A:276:VAL:HG11	3:A:402:PEG:H22	1.87	0.56
1:C:136:LYS:HE2	1:C:139:GLU:HA	1.87	0.56
1:B:112:ARG:HD3	1:B:114:TRP:CZ2	2.41	0.56
1:B:243:ILE:HG22	8:B:403:PGE:H42	1.88	0.55
1:B:242:THR:HG22	8:B:403:PGE:H6	1.89	0.55
1:C:21:ILE:HG21	1:C:45:LEU:HD13	1.89	0.54
1:A:92:PHE:HE2	7:B:401:PG4:H51	1.72	0.54
1:D:13[B]:LEU:HD21	1:D:172:LYS:HB3	1.89	0.54

Continued on next page...

Continued from previous page...

Atom-1	Atom-2	Interatomic distance (Å)	Clash overlap (Å)
1:A:112:ARG:HD3	1:A:114:TRP:CZ2	2.44	0.53
1:B:35:GLN:HB2	7:B:401:PG4:H72	1.90	0.52
1:A:324:ARG:HH22	3:A:402:PEG:H42	1.73	0.52
1:A:13[B]:LEU:HD22	1:A:96:LYS:HG3	1.93	0.50
1:C:112:ARG:HD3	1:C:114:TRP:CZ2	2.46	0.50
1:D:178:GLY:HA2	1:D:184:ILE:HB	1.95	0.49
1:D:112:ARG:HD3	1:D:114:TRP:CZ2	2.47	0.49
1:D:24:MET:HA	2:D:401:FMN:C5A	2.44	0.47
1:A:330:PRO:HG2	1:B:330:PRO:HG2	1.98	0.46
1:C:198:GLN:HG3	9:C:402:EDO:H22	1.97	0.46
1:B:-1:GLY:HA3	1:B:5:PHE:O	2.16	0.46
7:B:401:PG4:H52	7:B:401:PG4:H32	1.70	0.45
1:A:24:MET:HA	2:A:401:FMN:C5A	2.46	0.45
1:A:252:GLU:O	1:A:256[B]:ARG:HG2	2.16	0.45
1:D:344:PRO:HG2	1:D:354:ARG:HD2	1.98	0.45
1:A:21:ILE:HG21	1:A:45:LEU:HD13	1.98	0.45
1:C:24:MET:HA	2:C:401:FMN:C5A	2.47	0.44
1:B:24:MET:HA	2:B:402:FMN:C5A	2.48	0.44
1:A:128:GLN:OE1	1:A:145[A]:HIS:NE2	2.51	0.43
1:C:10:LEU:HD11	1:C:260:PHE:HB3	2.01	0.43
1:A:3:LEU:O	1:A:18[B]:ARG:HD2	2.17	0.42
1:C:178:GLY:HA2	1:C:184:ILE:HB	2.01	0.42
1:D:204:GLU:HG3	9:D:404:EDO:H22	2.02	0.42
1:D:44:ARG:HB2	10:D:594:HOH:O	2.20	0.42
1:B:35:GLN:HB3	7:B:401:PG4:H61	2.01	0.41
1:A:4:LEU:O	1:A:17:ASN:HB2	2.21	0.41
1:B:211:LEU:HD22	1:B:256[A]:ARG:HD2	2.01	0.41
1:A:324:ARG:HH22	3:A:402:PEG:C4	2.33	0.41
1:D:172:LYS:HD3	1:D:172:LYS:HA	1.90	0.41
1:B:96:LYS:HD3	1:B:96:LYS:HA	1.83	0.41
1:A:327:LEU:HD22	1:B:350:TYR:CD1	2.56	0.41
1:B:21:ILE:HG21	1:B:45:LEU:HD13	2.02	0.40
1:C:313:LYS:HD2	3:C:404:PEG:H41	2.03	0.40

There are no symmetry-related clashes.

5.3 Torsion angles [i](#)

5.3.1 Protein backbone [i](#)

In the following table, the Percentiles column shows the percent Ramachandran outliers of the chain as a percentile score with respect to all X-ray entries followed by that with respect to entries of similar resolution.

The Analysed column shows the number of residues for which the backbone conformation was analysed, and the total number of residues.

Mol	Chain	Analysed	Favoured	Allowed	Outliers	Percentiles	
1	A	358/373 (96%)	350 (98%)	8 (2%)	0	100	100
1	B	356/373 (95%)	347 (98%)	9 (2%)	0	100	100
1	C	358/373 (96%)	350 (98%)	8 (2%)	0	100	100
1	D	358/373 (96%)	350 (98%)	8 (2%)	0	100	100
All	All	1430/1492 (96%)	1397 (98%)	33 (2%)	0	100	100

There are no Ramachandran outliers to report.

5.3.2 Protein sidechains [i](#)

In the following table, the Percentiles column shows the percent sidechain outliers of the chain as a percentile score with respect to all X-ray entries followed by that with respect to entries of similar resolution.

The Analysed column shows the number of residues for which the sidechain conformation was analysed, and the total number of residues.

Mol	Chain	Analysed	Rotameric	Outliers	Percentiles	
1	A	285/296 (96%)	283 (99%)	2 (1%)	84	92
1	B	283/296 (96%)	280 (99%)	3 (1%)	73	86
1	C	285/296 (96%)	282 (99%)	3 (1%)	73	86
1	D	285/296 (96%)	281 (99%)	4 (1%)	67	81
All	All	1138/1184 (96%)	1126 (99%)	12 (1%)	76	86

All (12) residues with a non-rotameric sidechain are listed below:

Mol	Chain	Res	Type
1	A	84	ARG
1	A	177	HIS

Continued on next page...

Continued from previous page...

Mol	Chain	Res	Type
1	B	84[A]	ARG
1	B	84[B]	ARG
1	B	177	HIS
1	C	84	ARG
1	C	177	HIS
1	C	224	GLU
1	D	84	ARG
1	D	150	GLU
1	D	177	HIS
1	D	343	LYS

Sometimes sidechains can be flipped to improve hydrogen bonding and reduce clashes. There are no such sidechains identified.

5.3.3 RNA [i](#)

There are no RNA molecules in this entry.

5.4 Non-standard residues in protein, DNA, RNA chains [i](#)

There are no non-standard protein/DNA/RNA residues in this entry.

5.5 Carbohydrates [i](#)

There are no monosaccharides in this entry.

5.6 Ligand geometry [i](#)

Of 27 ligands modelled in this entry, 12 are monoatomic - leaving 15 for Mogul analysis.

In the following table, the Counts columns list the number of bonds (or angles) for which Mogul statistics could be retrieved, the number of bonds (or angles) that are observed in the model and the number of bonds (or angles) that are defined in the Chemical Component Dictionary. The Link column lists molecule types, if any, to which the group is linked. The Z score for a bond length (or angle) is the number of standard deviations the observed value is removed from the expected value. A bond length (or angle) with $|Z| > 2$ is considered an outlier worth inspection. RMSZ is the root-mean-square of all Z scores of the bond lengths (or angles).

Mol	Type	Chain	Res	Link	Bond lengths			Bond angles		
					Counts	RMSZ	$\# Z > 2$	Counts	RMSZ	$\# Z > 2$
9	EDO	D	402	-	3,3,3	0.51	0	2,2,2	0.17	0

Mol	Type	Chain	Res	Link	Bond lengths			Bond angles		
					Counts	RMSZ	# Z > 2	Counts	RMSZ	# Z > 2
2	FMN	D	401	-	33,33,33	1.07	2 (6%)	48,50,50	1.26	7 (14%)
3	PEG	A	402	-	6,6,6	0.49	0	5,5,5	0.29	0
2	FMN	A	401	-	33,33,33	1.06	2 (6%)	48,50,50	1.24	7 (14%)
3	PEG	C	404	-	6,6,6	0.47	0	5,5,5	0.30	0
7	PG4	B	401	-	12,12,12	0.52	0	11,11,11	0.28	0
2	FMN	B	402	-	33,33,33	1.07	2 (6%)	48,50,50	1.25	7 (14%)
2	FMN	C	401	-	33,33,33	1.07	2 (6%)	48,50,50	1.25	7 (14%)
8	PGE	B	403	-	9,9,9	0.51	0	8,8,8	0.21	0
3	PEG	A	406	5	6,6,6	0.49	0	5,5,5	0.22	0
9	EDO	C	405	-	3,3,3	0.47	0	2,2,2	0.37	0
9	EDO	D	404	-	3,3,3	0.50	0	2,2,2	0.21	0
4	9D2	B	404	-	8,8,8	0.54	0	10,10,10	0.91	1 (10%)
9	EDO	C	402	-	3,3,3	0.50	0	2,2,2	0.27	0
4	9D2	A	403	-	8,8,8	0.48	0	10,10,10	0.76	0

In the following table, the Chirals column lists the number of chiral outliers, the number of chiral centers analysed, the number of these observed in the model and the number defined in the Chemical Component Dictionary. Similar counts are reported in the Torsion and Rings columns. '-' means no outliers of that kind were identified.

Mol	Type	Chain	Res	Link	Chirals	Torsions	Rings
9	EDO	D	402	-	-	0/1/1/1	-
2	FMN	D	401	-	-	1/18/18/18	0/3/3/3
3	PEG	A	402	-	-	4/4/4/4	-
2	FMN	A	401	-	-	1/18/18/18	0/3/3/3
3	PEG	C	404	-	-	1/4/4/4	-
7	PG4	B	401	-	-	8/10/10/10	-
2	FMN	B	402	-	-	1/18/18/18	0/3/3/3
2	FMN	C	401	-	-	1/18/18/18	0/3/3/3
8	PGE	B	403	-	-	4/7/7/7	-
3	PEG	A	406	5	-	1/4/4/4	-
9	EDO	C	405	-	-	0/1/1/1	-
9	EDO	D	404	-	-	0/1/1/1	-
4	9D2	B	404	-	-	0/12/12/12	-
9	EDO	C	402	-	-	0/1/1/1	-
4	9D2	A	403	-	-	9/12/12/12	-

All (8) bond length outliers are listed below:

Mol	Chain	Res	Type	Atoms	Z	Observed(Å)	Ideal(Å)
2	C	401	FMN	C4A-N5	4.05	1.38	1.30
2	D	401	FMN	C4A-N5	4.00	1.38	1.30
2	B	402	FMN	C4A-N5	3.89	1.38	1.30
2	A	401	FMN	C4A-N5	3.87	1.38	1.30
2	C	401	FMN	C10-N1	2.54	1.38	1.33
2	B	402	FMN	C10-N1	2.52	1.38	1.33
2	D	401	FMN	C10-N1	2.52	1.38	1.33
2	A	401	FMN	C10-N1	2.43	1.38	1.33

All (29) bond angle outliers are listed below:

Mol	Chain	Res	Type	Atoms	Z	Observed(°)	Ideal(°)
2	D	401	FMN	C4-N3-C2	-3.28	119.58	125.64
2	B	402	FMN	C4-N3-C2	-3.20	119.73	125.64
2	C	401	FMN	C4-N3-C2	-3.15	119.81	125.64
2	A	401	FMN	C4-N3-C2	-3.15	119.82	125.64
2	D	401	FMN	C4A-C4-N3	2.87	120.47	113.19
2	C	401	FMN	C4A-C4-N3	2.82	120.34	113.19
2	B	402	FMN	C4A-C4-N3	2.79	120.28	113.19
2	D	401	FMN	C4A-C10-N10	2.77	120.53	116.48
2	A	401	FMN	C4A-C4-N3	2.72	120.11	113.19
2	A	401	FMN	C4A-C10-N10	2.72	120.46	116.48
2	C	401	FMN	C4A-C10-N10	2.63	120.33	116.48
2	B	402	FMN	C4A-C10-N10	2.61	120.30	116.48
2	C	401	FMN	C10-C4A-N5	-2.54	119.47	124.86
2	D	401	FMN	C10-C4A-N5	-2.51	119.53	124.86
2	B	402	FMN	C10-C4A-N5	-2.47	119.61	124.86
2	B	402	FMN	O4-C4-C4A	-2.46	120.07	126.60
2	A	401	FMN	C10-C4A-N5	-2.45	119.65	124.86
2	A	401	FMN	O4-C4-C4A	-2.43	120.15	126.60
2	C	401	FMN	C9A-C5A-N5	-2.38	119.84	122.43
2	B	402	FMN	C9A-C5A-N5	-2.34	119.89	122.43
2	D	401	FMN	C4A-C10-N1	-2.32	119.34	124.73
2	D	401	FMN	O4-C4-C4A	-2.29	120.53	126.60
2	C	401	FMN	O4-C4-C4A	-2.21	120.75	126.60
2	A	401	FMN	C9A-C5A-N5	-2.20	120.04	122.43
2	C	401	FMN	C4A-C10-N1	-2.19	119.64	124.73
4	B	404	9D2	C-C1-C2	-2.19	111.35	116.64
2	D	401	FMN	C9A-C5A-N5	-2.17	120.07	122.43
2	A	401	FMN	C4A-C10-N1	-2.16	119.71	124.73
2	B	402	FMN	C4A-C10-N1	-2.16	119.72	124.73

There are no chirality outliers.

All (31) torsion outliers are listed below:

Mol	Chain	Res	Type	Atoms
4	A	403	9D2	C1-C2-C5-O2
4	A	403	9D2	C-C1-C2-C4
4	A	403	9D2	C-C1-C2-C5
4	A	403	9D2	C-C1-C2-C3
3	A	402	PEG	O1-C1-C2-O2
7	B	401	PG4	O3-C5-C6-O4
3	A	402	PEG	O2-C3-C4-O4
7	B	401	PG4	O4-C7-C8-O5
3	A	406	PEG	O2-C3-C4-O4
3	C	404	PEG	O1-C1-C2-O2
4	A	403	9D2	C4-C2-C5-O2
4	A	403	9D2	C3-C2-C5-O2
7	B	401	PG4	O2-C3-C4-O3
7	B	401	PG4	C3-C4-O3-C5
4	A	403	9D2	C3-C2-C4-O1
2	C	401	FMN	C4'-C5'-O5'-P
7	B	401	PG4	C8-C7-O4-C6
3	A	402	PEG	C4-C3-O2-C2
2	B	402	FMN	C4'-C5'-O5'-P
2	D	401	FMN	C4'-C5'-O5'-P
7	B	401	PG4	C1-C2-O2-C3
8	B	403	PGE	C4-C3-O2-C2
2	A	401	FMN	C4'-C5'-O5'-P
7	B	401	PG4	O1-C1-C2-O2
8	B	403	PGE	C3-C4-O3-C5
8	B	403	PGE	O1-C1-C2-O2
7	B	401	PG4	C4-C3-O2-C2
4	A	403	9D2	C1-C2-C4-O1
4	A	403	9D2	C5-C2-C4-O1
3	A	402	PEG	C1-C2-O2-C3
8	B	403	PGE	O2-C3-C4-O3

There are no ring outliers.

10 monomers are involved in 17 short contacts:

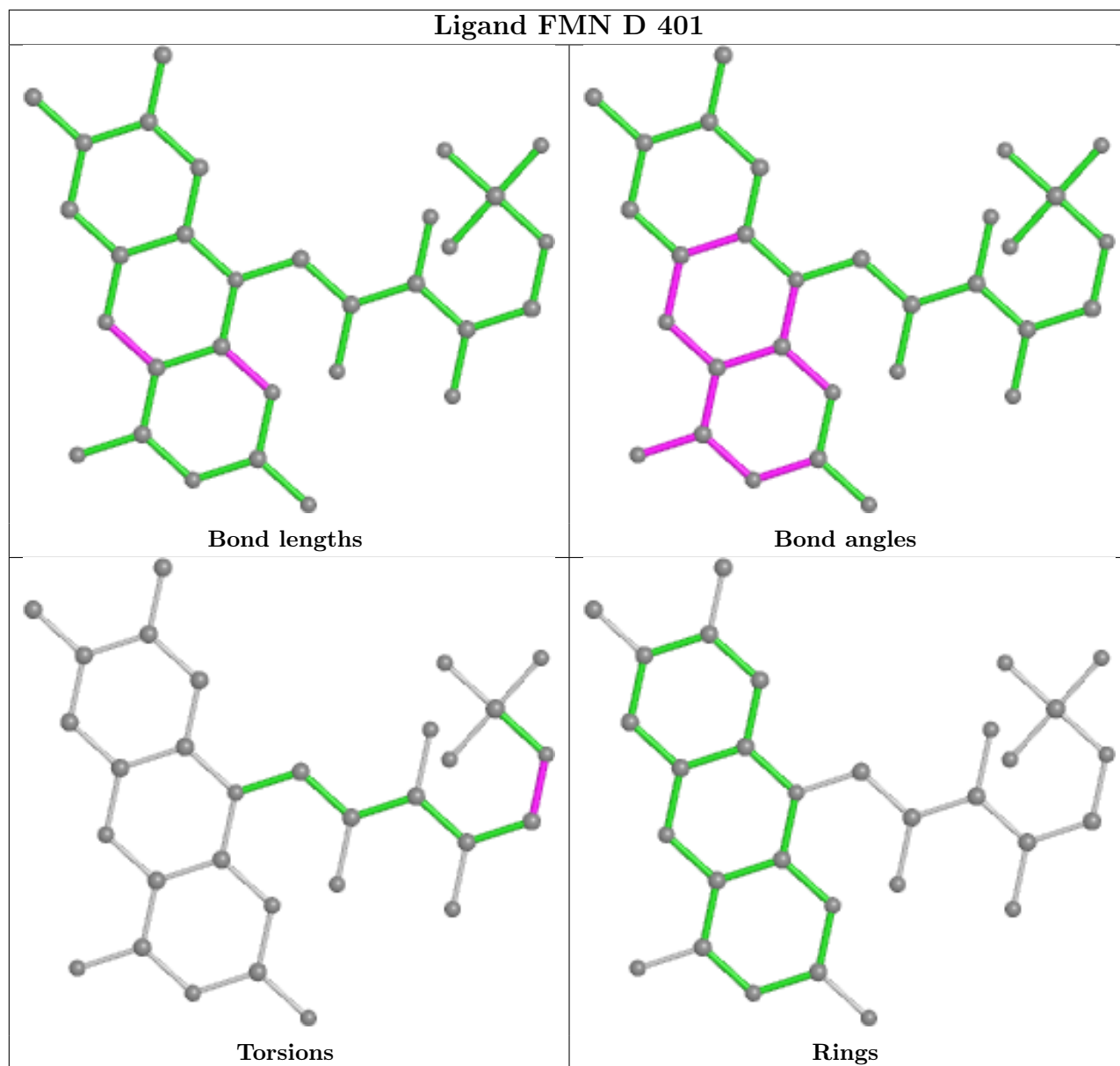
Mol	Chain	Res	Type	Clashes	Symm-Clashes
2	D	401	FMN	1	0
3	A	402	PEG	3	0
2	A	401	FMN	1	0
3	C	404	PEG	1	0
7	B	401	PG4	5	0

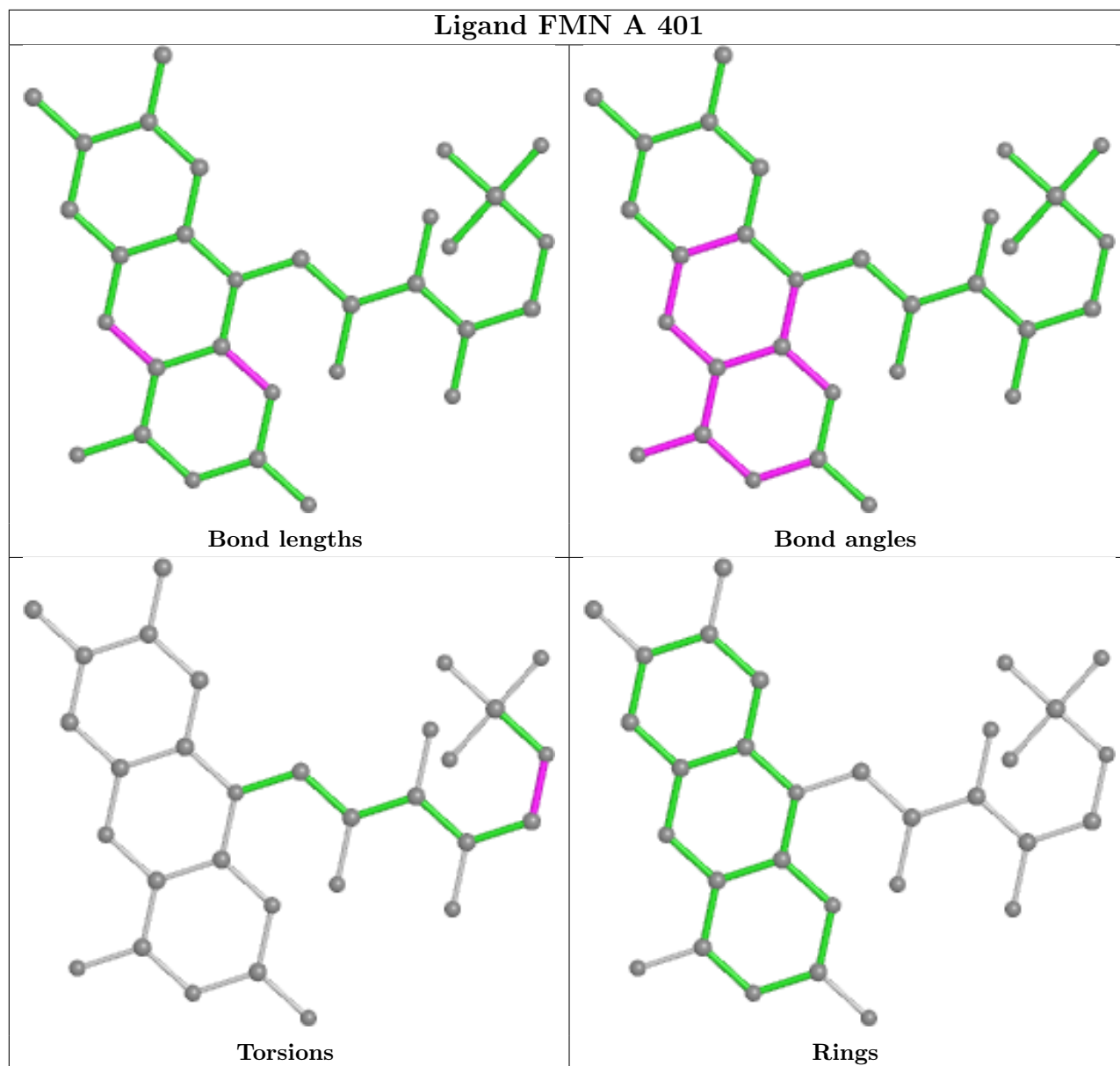
Continued on next page...

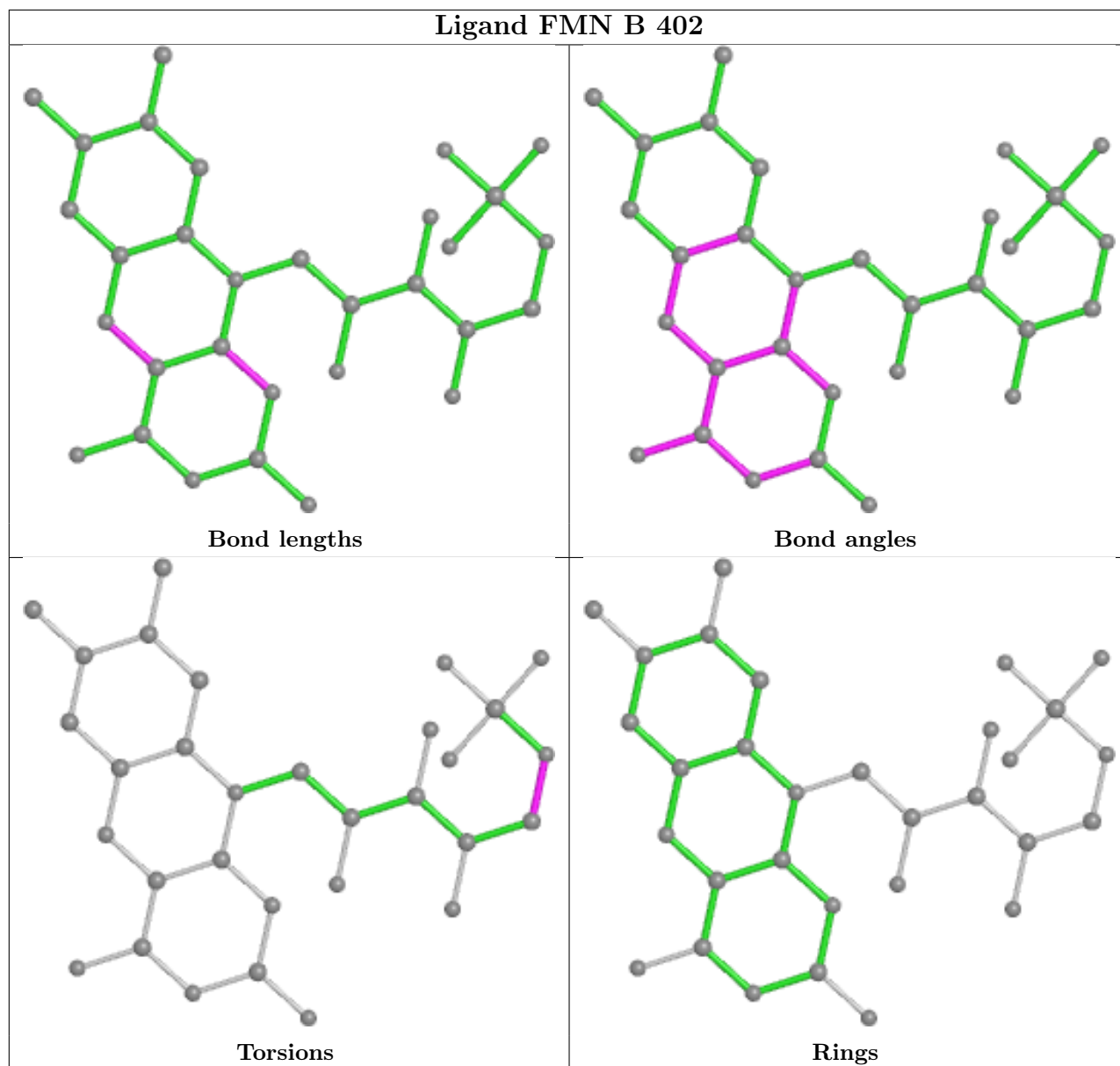
Continued from previous page...

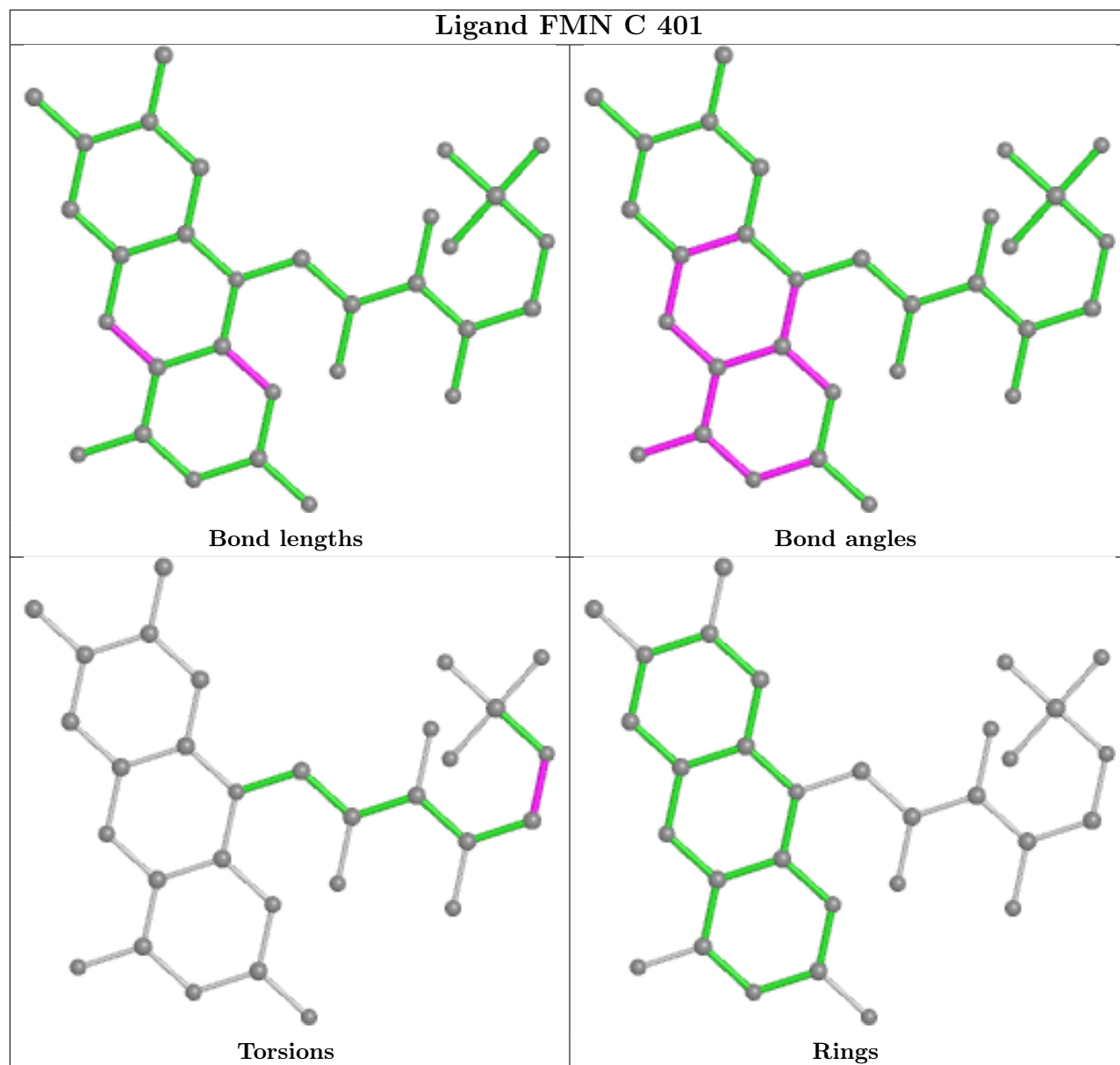
Mol	Chain	Res	Type	Clashes	Symm-Clashes
2	B	402	FMN	1	0
2	C	401	FMN	1	0
8	B	403	PGE	2	0
9	D	404	EDO	1	0
9	C	402	EDO	1	0

The following is a two-dimensional graphical depiction of Mogul quality analysis of bond lengths, bond angles, torsion angles, and ring geometry for all instances of the Ligand of Interest. In addition, ligands with molecular weight > 250 and outliers as shown on the validation Tables will also be included. For torsion angles, if less than 5% of the Mogul distribution of torsion angles is within 10 degrees of the torsion angle in question, then that torsion angle is considered an outlier. Any bond that is central to one or more torsion angles identified as an outlier by Mogul will be highlighted in the graph. For rings, the root-mean-square deviation (RMSD) between the ring in question and similar rings identified by Mogul is calculated over all ring torsion angles. If the average RMSD is greater than 60 degrees and the minimal RMSD between the ring in question and any Mogul-identified rings is also greater than 60 degrees, then that ring is considered an outlier. The outliers are highlighted in purple. The color gray indicates Mogul did not find sufficient equivalents in the CSD to analyse the geometry.









5.7 Other polymers [\(i\)](#)

There are no such residues in this entry.

5.8 Polymer linkage issues [\(i\)](#)

There are no chain breaks in this entry.

6 Fit of model and data [i](#)

6.1 Protein, DNA and RNA chains [i](#)

In the following table, the column labelled ‘#RSRZ > 2’ contains the number (and percentage) of RSRZ outliers, followed by percent RSRZ outliers for the chain as percentile scores relative to all X-ray entries and entries of similar resolution. The OWAB column contains the minimum, median, 95th percentile and maximum values of the occupancy-weighted average B-factor per residue. The column labelled ‘Q < 0.9’ lists the number of (and percentage) of residues with an average occupancy less than 0.9.

Mol	Chain	Analysed	<RSRZ>	#RSRZ>2	OWAB(Å ²)	Q<0.9
1	A	356/373 (95%)	-0.34	1 (0%) 94 96	28, 36, 54, 74	0
1	B	356/373 (95%)	-0.40	1 (0%) 94 96	27, 36, 54, 70	0
1	C	356/373 (95%)	-0.31	4 (1%) 80 85	28, 37, 59, 81	0
1	D	356/373 (95%)	-0.25	9 (2%) 57 64	28, 37, 63, 80	0
All	All	1424/1492 (95%)	-0.33	15 (1%) 80 85	27, 36, 57, 81	0

All (15) RSRZ outliers are listed below:

Mol	Chain	Res	Type	RSRZ
1	D	123	GLU	4.4
1	C	123	GLU	3.7
1	D	117	GLY	3.1
1	D	140	GLU	3.0
1	D	122	PRO	3.0
1	D	142	LEU	2.8
1	D	224	GLU	2.7
1	D	121	SER	2.5
1	C	139	GLU	2.3
1	C	142	LEU	2.2
1	D	139	GLU	2.2
1	B	354	ARG	2.1
1	A	224	GLU	2.1
1	C	122	PRO	2.0
1	D	130	TRP	2.0

6.2 Non-standard residues in protein, DNA, RNA chains [i](#)

There are no non-standard protein/DNA/RNA residues in this entry.

6.3 Carbohydrates [i](#)

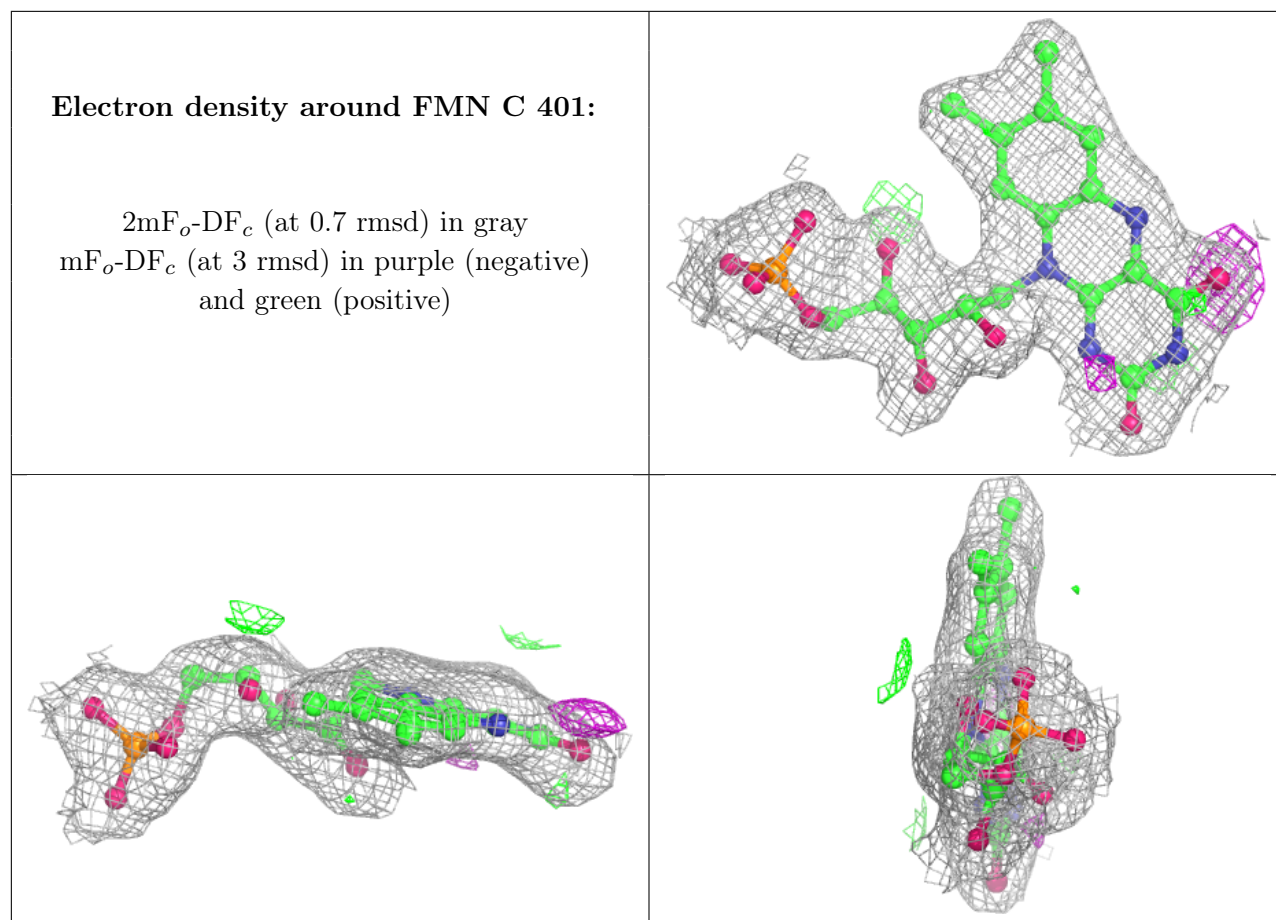
There are no monosaccharides in this entry.

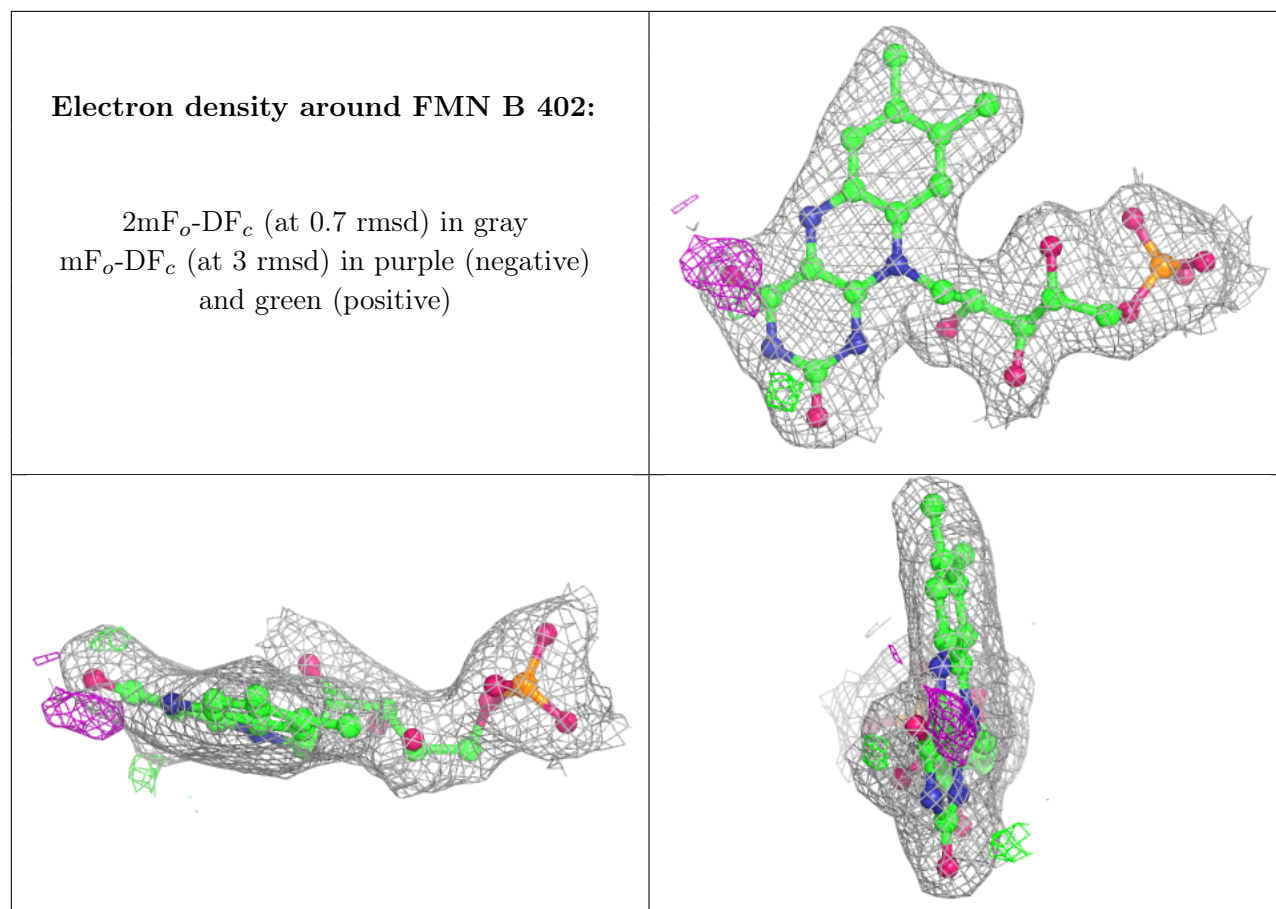
6.4 Ligands [i](#)

In the following table, the Atoms column lists the number of modelled atoms in the group and the number defined in the chemical component dictionary. The B-factors column lists the minimum, median, 95th percentile and maximum values of B factors of atoms in the group. The column labelled 'Q< 0.9' lists the number of atoms with occupancy less than 0.9.

Mol	Type	Chain	Res	Atoms	RSCC	RSR	B-factors(Å ²)	Q<0.9
3	PEG	A	406	7/7	0.60	0.39	49,67,75,80	0
9	EDO	D	402	4/4	0.62	0.34	43,45,51,56	4
7	PG4	B	401	13/13	0.65	0.39	42,55,71,72	0
8	PGE	B	403	10/10	0.68	0.49	48,55,61,62	10
9	EDO	D	404	4/4	0.72	0.35	38,43,50,55	4
3	PEG	A	402	7/7	0.78	0.51	46,55,64,74	0
9	EDO	C	402	4/4	0.78	0.24	40,51,55,58	0
3	PEG	C	404	7/7	0.81	0.24	60,71,77,79	0
6	CL	C	406	1/1	0.82	0.23	71,71,71,71	0
9	EDO	C	405	4/4	0.84	0.17	54,55,69,71	0
5	YT3	A	404	1/1	0.88	0.13	93,93,93,93	0
4	9D2	A	403	9/9	0.88	0.21	34,50,57,60	0
5	YT3	B	406	1/1	0.89	0.11	88,88,88,88	0
6	CL	A	407	1/1	0.91	0.14	59,59,59,59	0
6	CL	B	407	1/1	0.91	0.15	52,52,52,52	0
5	YT3	C	403	1/1	0.91	0.06	84,84,84,84	0
6	CL	D	406	1/1	0.91	0.16	66,66,66,66	0
5	YT3	D	405	1/1	0.91	0.09	84,84,84,84	0
4	9D2	B	404	9/9	0.92	0.15	34,44,49,57	0
6	CL	D	407	1/1	0.92	0.05	78,78,78,78	0
5	YT3	D	403	1/1	0.93	0.03	120,120,120,120	0
2	FMN	C	401	31/31	0.97	0.13	26,32,39,42	0
5	YT3	A	405	1/1	0.98	0.20	39,39,39,39	0
2	FMN	B	402	31/31	0.98	0.13	22,29,36,37	0
2	FMN	A	401	31/31	0.98	0.11	23,31,37,40	0
2	FMN	D	401	31/31	0.98	0.11	26,32,38,41	0
5	YT3	B	405	1/1	0.99	0.20	37,37,37,37	0

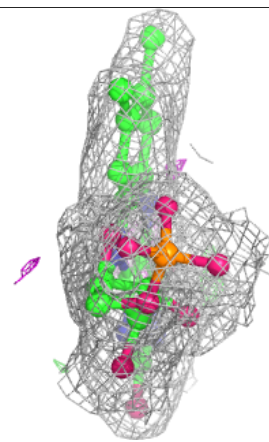
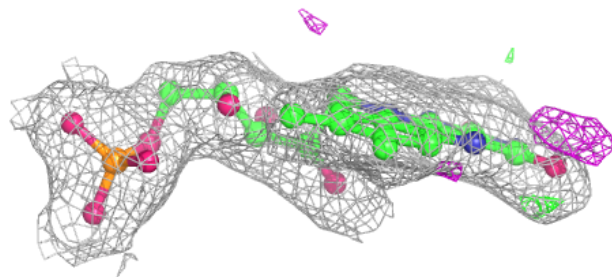
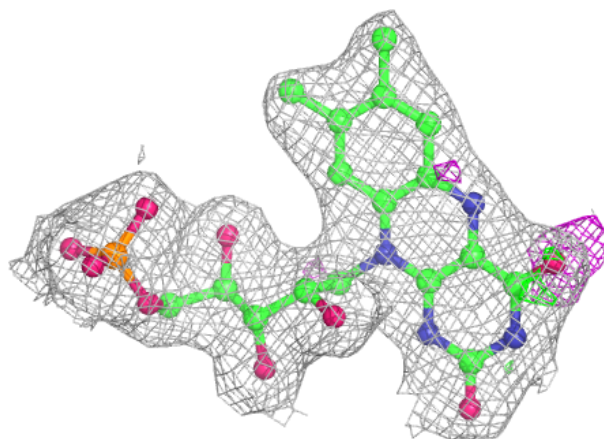
The following is a graphical depiction of the model fit to experimental electron density of all instances of the Ligand of Interest. In addition, ligands with molecular weight > 250 and outliers as shown on the geometry validation Tables will also be included. Each fit is shown from different orientation to approximate a three-dimensional view.

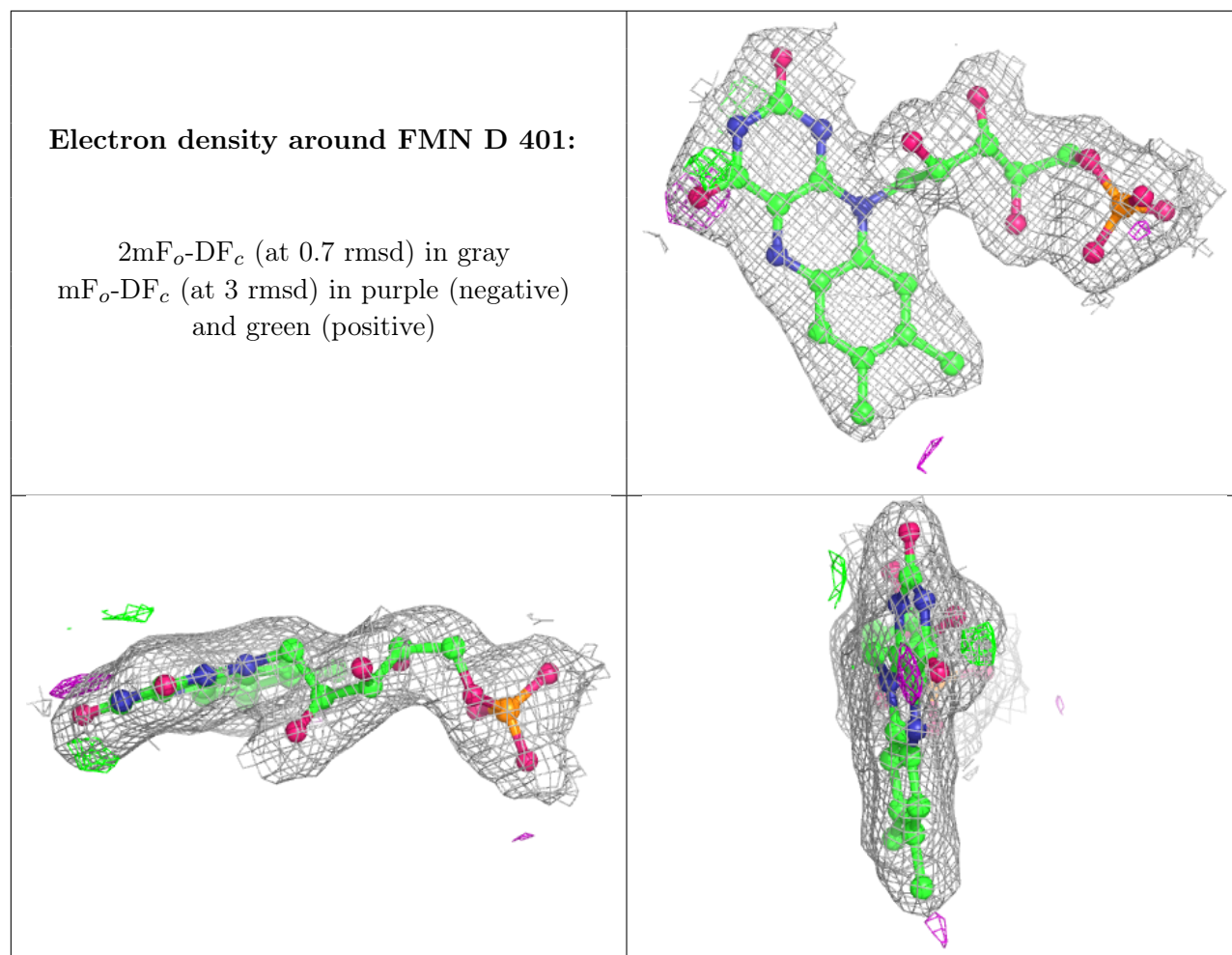




Electron density around FMN A 401:

$2mF_o-DF_c$ (at 0.7 rmsd) in gray
 mF_o-DF_c (at 3 rmsd) in purple (negative)
and green (positive)





6.5 Other polymers [\(i\)](#)

There are no such residues in this entry.