



Full wwPDB EM Validation Report ⓘ

Apr 18, 2024 – 04:12 pm BST

PDB ID : 8PEN
EMDB ID : EMD-17632
Title : fully recruited RfaH bound to E. coli transcription complex paused at ops site
(alternative state of RfaH)
Authors : Zuber, P.K.; Said, N.; Hilal, T.; Loll, B.; Wahl, M.C.; Knauer, S.H.
Deposited on : 2023-06-14
Resolution : 3.10 Å(reported)

This is a Full wwPDB EM Validation Report for a publicly released PDB entry.

We welcome your comments at validation@mail.wwpdb.org

A user guide is available at

<https://www.wwpdb.org/validation/2017/EMValidationReportHelp>

with specific help available everywhere you see the ⓘ symbol.

The types of validation reports are described at

<http://www.wwpdb.org/validation/2017/FAQs#types>.

The following versions of software and data (see [references ⓘ](#)) were used in the production of this report:

EMDB validation analysis : 0.0.1.dev92
MolProbity : 4.02b-467
Percentile statistics : 20191225.v01 (using entries in the PDB archive December 25th 2019)
MapQ : 1.9.13
Ideal geometry (proteins) : Engh & Huber (2001)
Ideal geometry (DNA, RNA) : Parkinson et al. (1996)
Validation Pipeline (wwPDB-VP) : 2.36

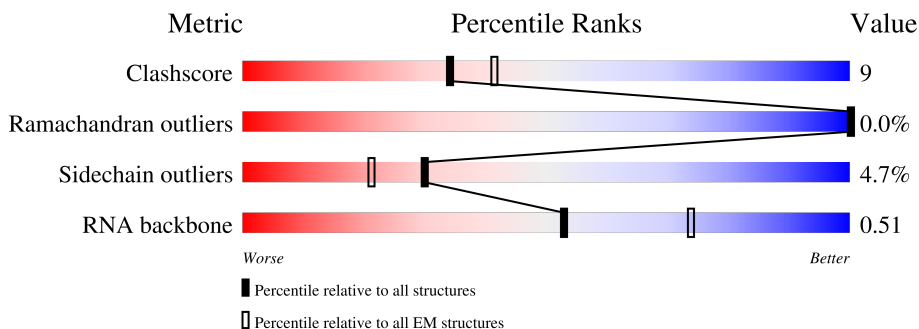
1 Overall quality at a glance i

The following experimental techniques were used to determine the structure:

ELECTRON MICROSCOPY

The reported resolution of this entry is 3.10 Å.

Percentile scores (ranging between 0-100) for global validation metrics of the entry are shown in the following graphic. The table shows the number of entries on which the scores are based.




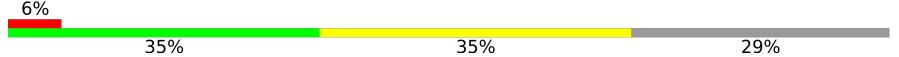
Metric	Whole archive (#Entries)	EM structures (#Entries)
Clashscore	158937	4297
Ramachandran outliers	154571	4023
Sidechain outliers	154315	3826
RNA backbone	4643	859

The table below summarises the geometric issues observed across the polymeric chains and their fit to the map. The red, orange, yellow and green segments of the bar indicate the fraction of residues that contain outliers for ≥ 3 , 2, 1 and 0 types of geometric quality criteria respectively. A grey segment represents the fraction of residues that are not modelled. The numeric value for each fraction is indicated below the corresponding segment, with a dot representing fractions $\leq 5\%$. The upper red bar (where present) indicates the fraction of residues that have poor fit to the EM map (all-atom inclusion $< 40\%$). The numeric value is given above the bar.

Mol	Chain	Length	Quality of chain
1	P	164	
2	I	1342	
3	J	1416	
4	K	91	
5	G	329	
5	H	329	
6	A	40	

Continued on next page...

Continued from previous page...

Mol	Chain	Length	Quality of chain
7	B	40	
8	R	17	

2 Entry composition i

There are 10 unique types of molecules in this entry. The entry contains 27734 atoms, of which 0 are hydrogens and 0 are deuteriums.

In the tables below, the AltConf column contains the number of residues with at least one atom in alternate conformation and the Trace column contains the number of residues modelled with at most 2 atoms.

- Molecule 1 is a protein called Transcription antitermination protein RfaH.

Mol	Chain	Residues	Atoms					AltConf	Trace
			Total	C	N	O	S		
1	P	101	811	523	144	140	4	0	0

There are 2 discrepancies between the modelled and reference sequences:

Chain	Residue	Modelled	Actual	Comment	Reference
P	-1	GLY	-	expression tag	UNP P0AFW0
P	0	HIS	-	expression tag	UNP P0AFW0

- Molecule 2 is a protein called DNA-directed RNA polymerase subunit beta.

Mol	Chain	Residues	Atoms					AltConf	Trace
			Total	C	N	O	S		
2	I	1321	10423	6539	1816	2024	44	0	0

- Molecule 3 is a protein called DNA-directed RNA polymerase subunit beta'.

Mol	Chain	Residues	Atoms					AltConf	Trace
			Total	C	N	O	S		
3	J	1342	10440	6560	1861	1969	50	0	0

There are 10 discrepancies between the modelled and reference sequences:

Chain	Residue	Modelled	Actual	Comment	Reference
J	1	VAL	-	expression tag	UNP P0A8T7
J	1408	LEU	-	expression tag	UNP P0A8T7
J	1409	GLU	-	expression tag	UNP P0A8T7
J	1410	VAL	-	expression tag	UNP P0A8T7
J	1411	HIS	-	expression tag	UNP P0A8T7
J	1412	HIS	-	expression tag	UNP P0A8T7
J	1413	HIS	-	expression tag	UNP P0A8T7
J	1414	HIS	-	expression tag	UNP P0A8T7
J	1415	HIS	-	expression tag	UNP P0A8T7

Continued on next page...

Continued from previous page...

Chain	Residue	Modelled	Actual	Comment	Reference
J	1416	HIS	-	expression tag	UNP P0A8T7

- Molecule 4 is a protein called DNA-directed RNA polymerase subunit omega.

Mol	Chain	Residues	Atoms					AltConf	Trace
			Total	C	N	O	S		
4	K	83	655	399	123	132	1	0	0

- Molecule 5 is a protein called DNA-directed RNA polymerase subunit alpha.

Mol	Chain	Residues	Atoms					AltConf	Trace
			Total	C	N	O	S		
5	G	232	1807	1125	322	354	6	1	0
5	H	230	1780	1108	314	352	6	0	0

- Molecule 6 is a DNA chain called non-template DNA.

Mol	Chain	Residues	Atoms					AltConf	Trace
			Total	C	N	O	P		
6	A	38	771	367	131	235	38	0	0

- Molecule 7 is a DNA chain called template DNA.

Mol	Chain	Residues	Atoms					AltConf	Trace
			Total	C	N	O	P		
7	B	38	784	370	158	219	37	0	0

- Molecule 8 is a RNA chain called RNA.

Mol	Chain	Residues	Atoms					AltConf	Trace
			Total	C	N	O	P		
8	R	12	260	115	47	86	12	0	0

- Molecule 9 is ZINC ION (three-letter code: ZN) (formula: Zn).

Mol	Chain	Residues	Atoms		AltConf
9	J	2	Total	Zn	0
			2	2	

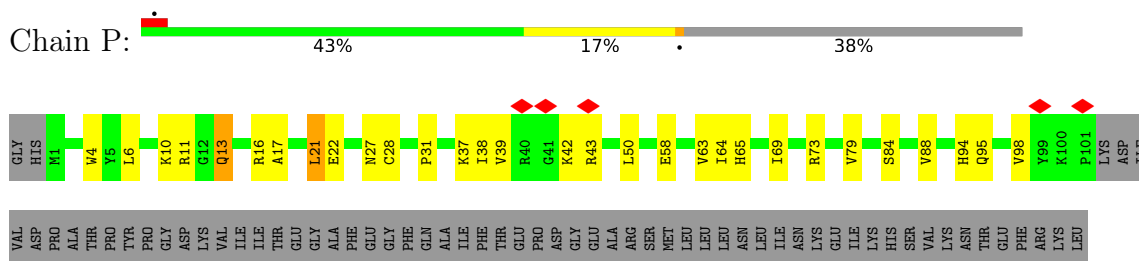
- Molecule 10 is MAGNESIUM ION (three-letter code: MG) (formula: Mg).

Mol	Chain	Residues	Atoms		AltConf
10	J	1	Total	Mg	0
			1	1	

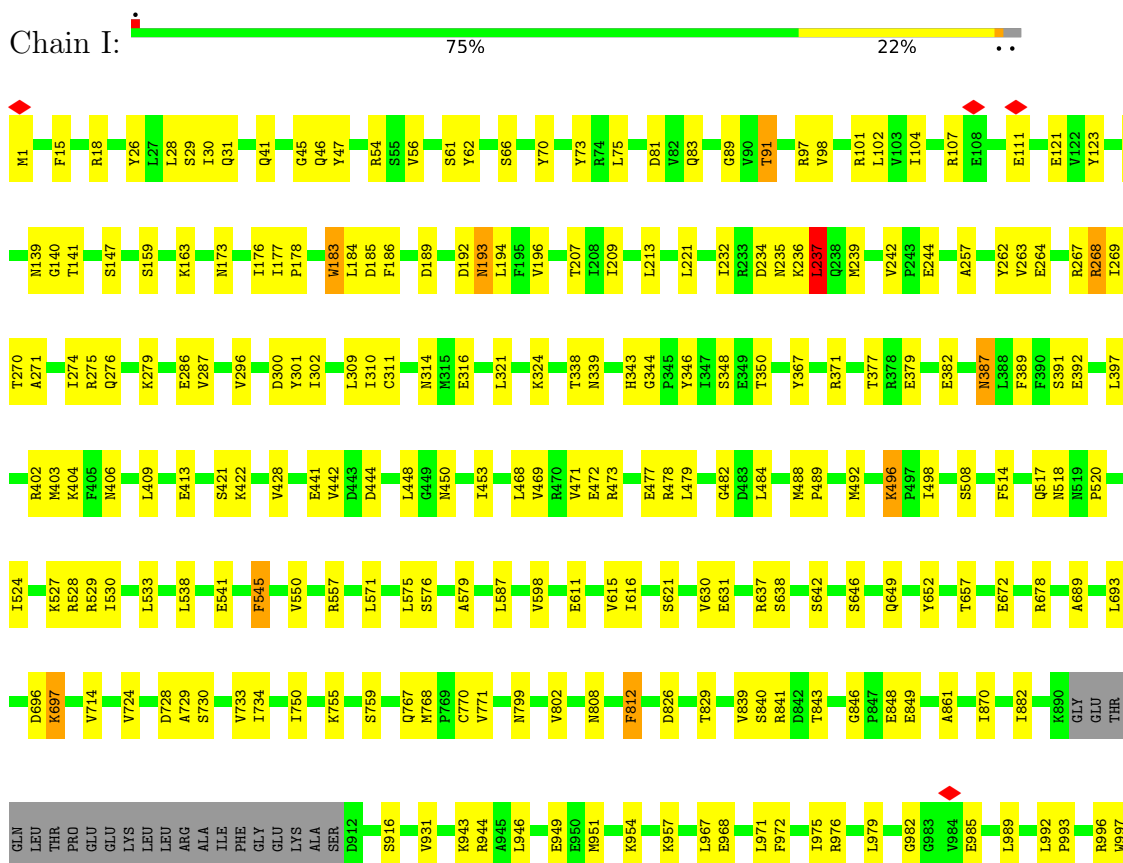
3 Residue-property plots

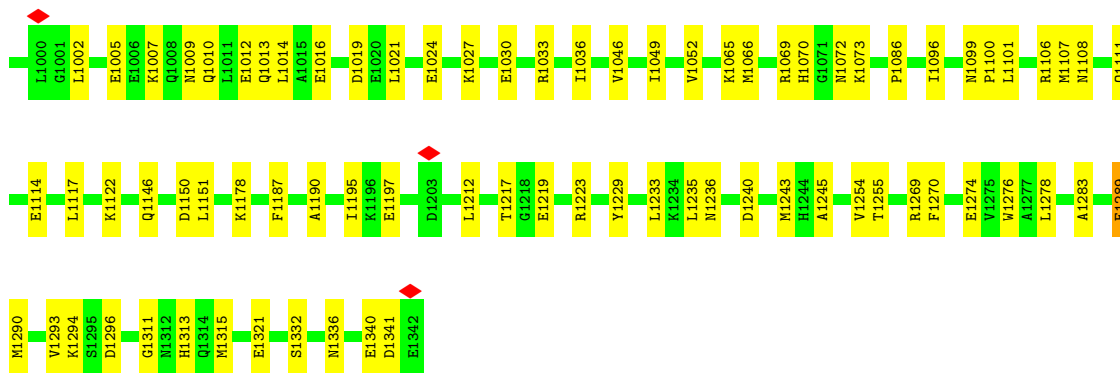
These plots are drawn for all protein, RNA, DNA and oligosaccharide chains in the entry. The first graphic for a chain summarises the proportions of the various outlier classes displayed in the second graphic. The second graphic shows the sequence view annotated by issues in geometry and atom inclusion in map density. Residues are color-coded according to the number of geometric quality criteria for which they contain at least one outlier: green = 0, yellow = 1, orange = 2 and red = 3 or more. A red diamond above a residue indicates a poor fit to the EM map for this residue (all-atom inclusion < 40%). Stretches of 2 or more consecutive residues without any outlier are shown as a green connector. Residues present in the sample, but not in the model, are shown in grey.

- Molecule 1: Transcription antitermination protein RfaH

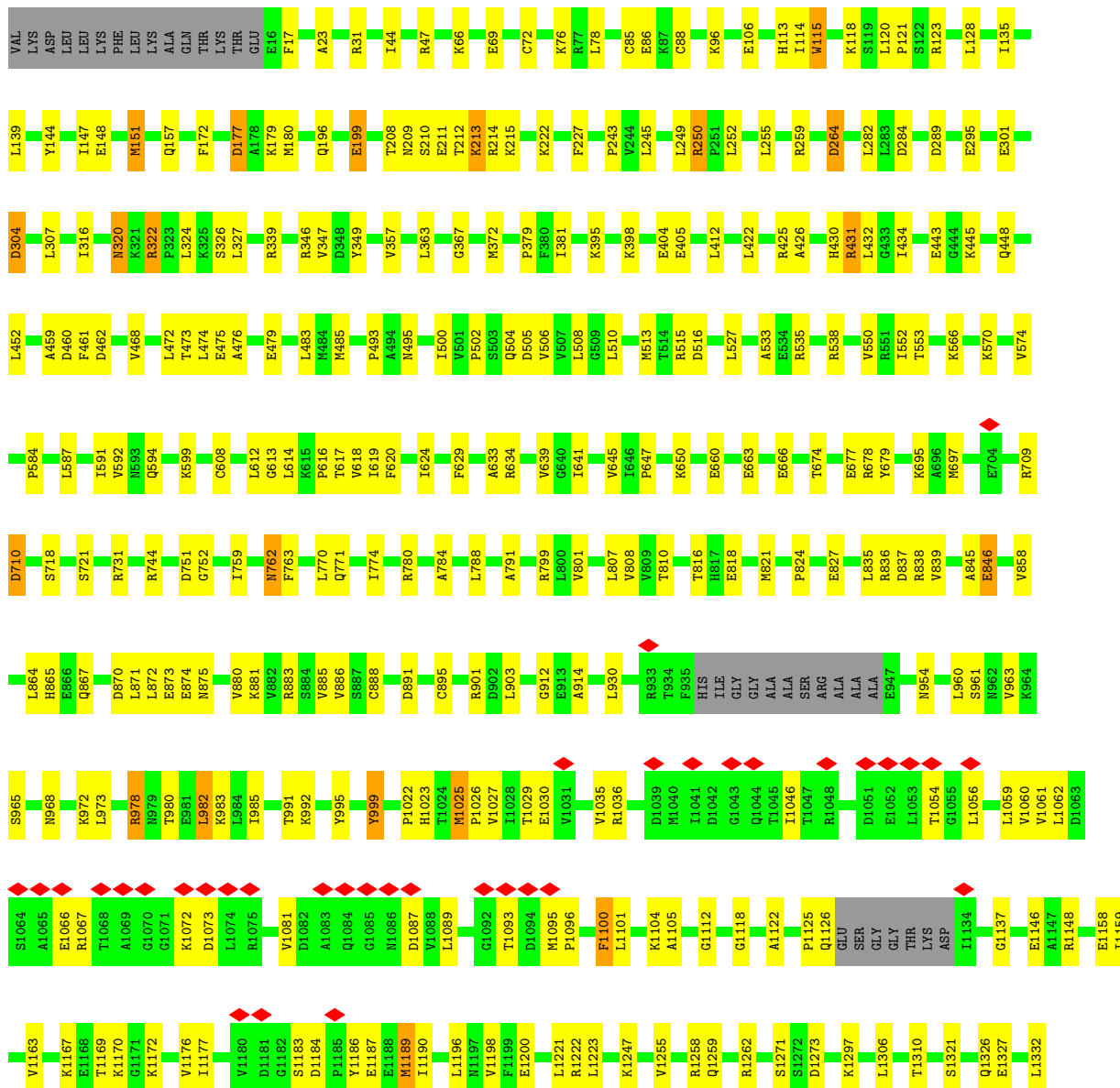


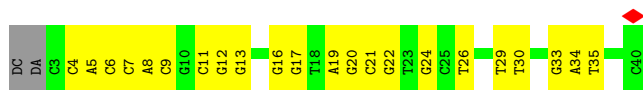
- Molecule 2: DNA-directed RNA polymerase subunit beta





• Molecule 3: DNA-directed RNA polymerase subunit beta'

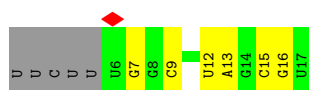




- Molecule 7: template DNA



- Molecule 8: RNA



4 Experimental information

Property	Value	Source
EM reconstruction method	SINGLE PARTICLE	Depositor
Imposed symmetry	POINT, C1	Depositor
Number of particles used	124233	Depositor
Resolution determination method	FSC 0.143 CUT-OFF	Depositor
CTF correction method	PHASE FLIPPING AND AMPLITUDE CORRECTION	Depositor
Microscope	FEI TITAN KRIOS	Depositor
Voltage (kV)	300	Depositor
Electron dose ($e^-/\text{\AA}^2$)	42	Depositor
Minimum defocus (nm)	200	Depositor
Maximum defocus (nm)	800	Depositor
Magnification	96000	Depositor
Image detector	FEI FALCON III (4k x 4k)	Depositor
Maximum map value	1.637	Depositor
Minimum map value	-0.000	Depositor
Average map value	0.008	Depositor
Map value standard deviation	0.050	Depositor
Recommended contour level	0.25	Depositor
Map size (Å)	319.488, 319.488, 319.488	wwPDB
Map dimensions	384, 384, 384	wwPDB
Map angles (°)	90.0, 90.0, 90.0	wwPDB
Pixel spacing (Å)	0.832, 0.832, 0.832	Depositor

5 Model quality [i](#)

5.1 Standard geometry [i](#)

Bond lengths and bond angles in the following residue types are not validated in this section: ZN, MG

The Z score for a bond length (or angle) is the number of standard deviations the observed value is removed from the expected value. A bond length (or angle) with $|Z| > 5$ is considered an outlier worth inspection. RMSZ is the root-mean-square of all Z scores of the bond lengths (or angles).

Mol	Chain	Bond lengths		Bond angles	
		RMSZ	# Z >5	RMSZ	# Z >5
1	P	0.30	0/832	0.62	0/1131
2	I	0.25	0/10589	0.50	1/14286 (0.0%)
3	J	0.25	0/10598	0.51	0/14309
4	K	0.32	0/657	0.72	0/886
5	G	0.24	0/1832	0.52	0/2482
5	H	0.25	0/1802	0.54	0/2443
6	A	0.50	0/860	0.95	0/1324
7	B	0.48	0/883	0.81	0/1362
8	R	0.18	0/290	0.79	0/451
All	All	0.27	0/28343	0.56	1/38674 (0.0%)

There are no bond length outliers.

All (1) bond angle outliers are listed below:

Mol	Chain	Res	Type	Atoms	Z	Observed($^{\circ}$)	Ideal($^{\circ}$)
2	I	237	LEU	CA-CB-CG	7.37	132.26	115.30

There are no chirality outliers.

There are no planarity outliers.

5.2 Too-close contacts [i](#)

In the following table, the Non-H and H(model) columns list the number of non-hydrogen atoms and hydrogen atoms in the chain respectively. The H(added) column lists the number of hydrogen atoms added and optimized by MolProbity. The Clashes column lists the number of clashes within the asymmetric unit, whereas Symm-Clashes lists symmetry-related clashes.

Mol	Chain	Non-H	H(model)	H(added)	Clashes	Symm-Clashes
1	P	811	0	826	16	0

Continued on next page...

Continued from previous page...

Mol	Chain	Non-H	H(model)	H(added)	Clashes	Symm-Clashes
2	I	10423	0	10436	187	0
3	J	10440	0	10660	191	0
4	K	655	0	663	26	0
5	G	1807	0	1840	31	0
5	H	1780	0	1803	41	0
6	A	771	0	430	19	0
7	B	784	0	424	23	0
8	R	260	0	130	5	0
9	J	2	0	0	0	0
10	J	1	0	0	0	0
All	All	27734	0	27212	490	0

The all-atom clashscore is defined as the number of clashes found per 1000 atoms (including hydrogen atoms). The all-atom clashscore for this structure is 9.

All (490) close contacts within the same asymmetric unit are listed below, sorted by their clash magnitude.

Atom-1	Atom-2	Interatomic distance (Å)	Clash overlap (Å)
5:H:10:LYS:HB3	5:H:12:ARG:HH11	1.48	0.78
3:J:960:LEU:HB3	3:J:963:VAL:HG21	1.66	0.77
2:I:812:PHE:O	2:I:1099:ASN:ND2	2.20	0.74
2:I:1005:GLU:HG2	2:I:1007:LYS:H	1.53	0.74
2:I:1073:LYS:NZ	8:R:16:G:OP1	2.20	0.73
3:J:381:ILE:HD11	3:J:412:LEU:HD23	1.72	0.72
2:I:808:ASN:H	3:J:633:ALA:HB2	1.53	0.71
2:I:177:ILE:HA	2:I:183:TRP:HB3	1.73	0.70
4:K:63:ILE:HG22	4:K:67:ARG:HH12	1.55	0.70
3:J:502:PRO:HB3	3:J:506:VAL:HB	1.71	0.70
5:G:45:ARG:HE	5:H:38:THR:HG22	1.57	0.70
2:I:1108:ASN:ND2	2:I:1111:GLN:OE1	2.25	0.69
2:I:392:GLU:OE1	2:I:392:GLU:N	2.25	0.69
3:J:431:ARG:HD3	3:J:493:PRO:HG3	1.74	0.69
3:J:443:GLU:OE2	3:J:443:GLU:N	2.25	0.69
3:J:395:LYS:HA	3:J:398:LYS:HE2	1.76	0.68
5:G:127:GLN:OE1	5:G:127:GLN:N	2.23	0.68
4:K:8:ASP:OD2	4:K:9:ALA:N	2.27	0.67
4:K:42:GLU:OE2	4:K:42:GLU:N	2.28	0.67
4:K:15:ASN:O	4:K:15:ASN:ND2	2.22	0.67
2:I:1269:ARG:NH1	7:B:20:DG:OP1	2.27	0.67
2:I:992:LEU:HB2	2:I:996:ARG:HH22	1.58	0.67
5:H:108:GLY:HA3	5:H:133:LEU:HB2	1.78	0.66

Continued on next page...

Continued from previous page...

Atom-1	Atom-2	Interatomic distance (Å)	Clash overlap (Å)
1:P:73:ARG:HH12	2:I:477:GLU:HB2	1.59	0.66
1:P:10:LYS:NZ	6:A:16:DG:N7	2.44	0.66
2:I:545:PHE:HE1	3:J:788:LEU:HD11	1.61	0.66
3:J:535:ARG:NH1	5:H:176:CYS:SG	2.66	0.66
2:I:104:ILE:HG12	2:I:484:LEU:HD22	1.76	0.65
3:J:245:LEU:O	3:J:250:ARG:NH1	2.28	0.65
2:I:1100:PRO:HB3	3:J:639:VAL:HG22	1.79	0.65
4:K:72:GLN:O	4:K:76:GLU:HG3	1.97	0.65
3:J:751:ASP:OD1	3:J:752:GLY:N	2.29	0.65
5:H:192:VAL:HG12	5:H:193:GLU:HG3	1.78	0.65
2:I:371:ARG:NH1	6:A:20:DG:OP2	2.31	0.64
3:J:963:VAL:HG22	3:J:980:THR:HG23	1.80	0.64
5:H:188:GLU:OE1	5:H:200:LYS:NZ	2.30	0.64
5:G:5:VAL:O	5:H:150:ARG:NH2	2.30	0.64
2:I:441:GLU:OE1	2:I:442:VAL:N	2.28	0.64
1:P:63:VAL:HG12	1:P:64:ILE:HG23	1.80	0.64
2:I:611:GLU:OE2	2:I:637:ARG:NH2	2.31	0.63
3:J:1326:GLN:HG3	3:J:1327:GLU:HG3	1.80	0.63
3:J:846:GLU:HG2	3:J:881:LYS:HE3	1.81	0.63
5:H:191:ARG:HB3	5:H:196:THR:HG22	1.81	0.63
5:H:74:VAL:HG22	5:H:76:GLU:H	1.63	0.63
5:G:8:PHE:O	5:G:10:LYS:NZ	2.32	0.62
2:I:976:ARG:HB2	2:I:997:TRP:HZ3	1.64	0.62
3:J:584:PRO:HG2	3:J:587:LEU:HD23	1.82	0.62
3:J:614:LEU:HD23	4:K:7:GLN:HB2	1.80	0.62
3:J:282:LEU:HD12	3:J:295:GLU:HG3	1.80	0.62
3:J:527:LEU:HB2	3:J:550:VAL:HG12	1.82	0.62
2:I:104:ILE:HG23	2:I:484:LEU:HD13	1.81	0.61
3:J:1169:THR:OG1	3:J:1172:LYS:O	2.18	0.61
5:H:127:GLN:OE1	5:H:127:GLN:N	2.21	0.61
3:J:1158:GLU:HA	3:J:1223:LEU:HD11	1.83	0.61
5:G:235:ARG:HH12	5:H:14:VAL:HB	1.66	0.61
5:H:100:LEU:HB2	5:H:144:ILE:HD11	1.82	0.61
2:I:979:LEU:HD22	2:I:989:LEU:HD22	1.82	0.61
2:I:1106:ARG:HG3	2:I:1106:ARG:HH11	1.65	0.61
3:J:1259:GLN:OE1	3:J:1262:ARG:NH1	2.33	0.61
3:J:1035:VAL:O	3:J:1112:GLY:N	2.34	0.60
4:K:70:GLN:HA	4:K:73:GLN:HE21	1.66	0.60
5:G:104:LYS:HG2	5:G:110:VAL:HG22	1.84	0.60
3:J:363:LEU:HD23	3:J:618:VAL:HG12	1.83	0.60
5:H:93:GLN:HA	5:H:148:ARG:HH22	1.67	0.60

Continued on next page...

Continued from previous page...

Atom-1	Atom-2	Interatomic distance (Å)	Clash overlap (Å)
2:I:268:ARG:HH21	2:I:270:THR:HG22	1.67	0.60
2:I:1223:ARG:NH2	3:J:721:SER:OG	2.35	0.59
2:I:646:SER:HB3	2:I:649:GLN:HG3	1.83	0.59
2:I:697:LYS:O	2:I:799:ASN:ND2	2.35	0.59
2:I:189:ASP:HB3	2:I:193:ASN:HB2	1.83	0.59
5:G:158:ARG:NH2	5:G:173:VAL:O	2.35	0.59
3:J:69:GLU:HG3	3:J:76:LYS:HG2	1.85	0.59
2:I:406:ASN:ND2	2:I:413:GLU:O	2.36	0.59
2:I:1245:ALA:HB2	3:J:372:MET:HG3	1.84	0.59
3:J:1022:PRO:O	3:J:1126:GLN:NE2	2.36	0.59
2:I:302:ILE:HA	2:I:309:LEU:HA	1.84	0.59
3:J:968:ASN:OD1	3:J:972:LYS:N	2.36	0.59
7:B:26:DG:H2'	7:B:27:DC:C6	2.37	0.59
2:I:387:ASN:HA	2:I:391:SER:HB3	1.83	0.59
3:J:1046:ILE:HD12	3:J:1059:LEU:HB2	1.85	0.59
2:I:1086:PRO:HB2	2:I:1212:LEU:HD13	1.84	0.58
5:G:182:ARG:HB3	5:G:206:GLU:HB3	1.85	0.58
3:J:211:GLU:OE2	3:J:211:GLU:N	2.22	0.58
5:G:120:ASP:OD1	5:G:120:ASP:N	2.36	0.58
4:K:60:ASN:OD1	4:K:61:ASN:N	2.36	0.58
8:R:15:C:H2'	8:R:16:G:C8	2.39	0.58
3:J:837:ASP:OD2	3:J:838:ARG:N	2.37	0.58
2:I:972:PHE:HA	2:I:975:ILE:HG12	1.86	0.57
5:G:98:VAL:HG11	5:G:121:VAL:HG21	1.87	0.57
5:G:212:ASP:HB3	5:G:215:GLU:HB2	1.86	0.57
6:A:26:DT:O2	7:B:16:DG:N2	2.37	0.57
4:K:18:ASP:OD1	4:K:18:ASP:N	2.32	0.57
2:I:66:SER:HB2	2:I:484:LEU:HD11	1.86	0.57
3:J:1054:THR:HG23	3:J:1056:LEU:H	1.68	0.57
4:K:38:LEU:N	4:K:53:GLU:OE2	2.38	0.57
2:I:26:TYR:HB3	2:I:29:SER:HB3	1.86	0.56
4:K:65:ASP:HA	4:K:68:GLU:HG3	1.87	0.56
1:P:31:PRO:HB2	1:P:50:LEU:HB3	1.87	0.56
2:I:91:THR:HG22	2:I:139:ASN:H	1.70	0.56
2:I:841:ARG:HA	2:I:1046:VAL:HA	1.86	0.56
2:I:642:SER:HB2	3:J:770:LEU:HD21	1.88	0.56
2:I:1117:LEU:HD13	2:I:1195:ILE:HG12	1.87	0.56
3:J:784:ALA:O	3:J:788:LEU:HG	2.05	0.56
2:I:147:SER:HB2	2:I:530:ILE:HG22	1.87	0.56
2:I:196:VAL:HG21	2:I:209:ILE:HD11	1.88	0.56
2:I:275:ARG:O	2:I:275:ARG:NH1	2.39	0.56

Continued on next page...

Continued from previous page...

Atom-1	Atom-2	Interatomic distance (Å)	Clash overlap (Å)
5:G:61:ILE:HB	5:G:64:VAL:HB	1.88	0.56
2:I:1311:GLY:O	4:K:31:GLN:NE2	2.38	0.55
3:J:1087:ASP:OD1	3:J:1087:ASP:N	2.39	0.55
3:J:151:MET:H	3:J:151:MET:CE	2.19	0.55
5:H:29:GLU:OE1	5:H:29:GLU:N	2.38	0.55
2:I:533:LEU:HD21	2:I:571:LEU:HD13	1.87	0.55
3:J:121:PRO:HD2	3:J:123:ARG:HH12	1.71	0.55
2:I:982:GLY:HA3	2:I:1002:LEU:HD21	1.89	0.55
3:J:808:VAL:HG12	3:J:914:ALA:HA	1.89	0.55
3:J:426:ALA:HB1	7:B:20:DG:H1'	1.88	0.55
3:J:710:ASP:N	3:J:710:ASP:OD1	2.39	0.55
5:H:76:GLU:HG2	5:H:80:GLU:HG2	1.88	0.55
2:I:444:ASP:O	2:I:450:ASN:ND2	2.40	0.55
2:I:271:ALA:HA	2:I:274:ILE:HD12	1.88	0.54
3:J:405:GLU:N	3:J:405:GLU:OE1	2.40	0.54
3:J:930:LEU:HD12	3:J:1137:GLY:HA2	1.90	0.54
6:A:8:DA:H2''	6:A:9:DC:H5'	1.89	0.54
2:I:528:ARG:NH2	2:I:576:SER:O	2.40	0.54
2:I:276:GLN:HA	2:I:279:LYS:HE2	1.90	0.54
2:I:993:PRO:HD2	2:I:996:ARG:HH21	1.73	0.54
2:I:1070:HIS:NE2	2:I:1114:GLU:OE1	2.33	0.54
4:K:36:ASP:OD2	4:K:36:ASP:N	2.38	0.54
2:I:843:THR:OG1	2:I:846:GLY:O	2.26	0.54
3:J:1158:GLU:OE2	3:J:1222:ARG:NH1	2.41	0.54
5:G:57:THR:HG22	5:G:58:GLU:HG3	1.89	0.54
5:H:100:LEU:HB2	5:H:144:ILE:CD1	2.37	0.54
3:J:1067:ARG:O	3:J:1072:LYS:NZ	2.39	0.53
2:I:473:ARG:HH11	6:A:17:DG:H5''	1.72	0.53
2:I:1296:ASP:HB3	2:I:1321:GLU:H	1.74	0.53
2:I:1065:LYS:HE2	2:I:1235:LEU:HD12	1.89	0.53
3:J:209:ASN:HA	3:J:214:ARG:HH22	1.74	0.53
8:R:15:C:H2'	8:R:16:G:H8	1.74	0.53
5:G:235:ARG:HH21	5:H:16:ILE:HG22	1.74	0.53
2:I:163:LYS:HD2	2:I:163:LYS:N	2.23	0.53
3:J:462:ASP:OD1	3:J:462:ASP:N	2.39	0.53
3:J:591:ILE:HG13	3:J:592:VAL:HG13	1.91	0.53
1:P:6:LEU:HD23	1:P:79:VAL:HG11	1.91	0.52
3:J:824:PRO:HD3	3:J:835:LEU:HB2	1.91	0.52
3:J:709:ARG:HG2	3:J:710:ASP:N	2.23	0.52
2:I:132:ASP:OD1	2:I:132:ASP:N	2.36	0.52
3:J:1172:LYS:HB2	3:J:1189:MET:SD	2.49	0.52

Continued on next page...

Continued from previous page...

Atom-1	Atom-2	Interatomic distance (Å)	Clash overlap (Å)
3:J:1176:VAL:HG22	3:J:1187:GLU:HG3	1.90	0.52
2:I:1283:ALA:HA	3:J:479:GLU:OE1	2.09	0.52
5:G:222:THR:HA	5:H:232:VAL:HG23	1.91	0.52
1:P:38:ILE:HG12	1:P:43:ARG:HH22	1.75	0.52
2:I:615:VAL:HG22	2:I:638:SER:HB2	1.92	0.52
2:I:1151:LEU:HD11	2:I:1197:GLU:HG3	1.92	0.52
3:J:807:LEU:HD22	3:J:1259:GLN:HE21	1.74	0.52
5:G:98:VAL:HB	5:G:146:VAL:HG12	1.92	0.52
2:I:176:ILE:HD11	2:I:428:VAL:HG11	1.91	0.52
3:J:1036:ARG:HD3	3:J:1081:VAL:HG21	1.92	0.52
4:K:15:ASN:HD22	4:K:15:ASN:C	2.10	0.52
5:H:59:VAL:HG12	5:H:171:LEU:HB2	1.91	0.52
3:J:404:GLU:OE1	3:J:404:GLU:N	2.43	0.51
2:I:1341:ASP:HA	3:J:17:PHE:HA	1.91	0.51
3:J:660:GLU:O	3:J:663:GLU:HG3	2.11	0.51
2:I:696:ASP:OD1	2:I:799:ASN:ND2	2.41	0.51
3:J:799:ARG:NH1	3:J:1146:GLU:OE2	2.43	0.51
7:B:23:DA:H2'	7:B:24:DC:C6	2.46	0.51
2:I:689:ALA:HB2	2:I:1233:LEU:HD23	1.93	0.51
3:J:965:SER:HB2	3:J:973:LEU:HG	1.93	0.51
3:J:845:ALA:HA	3:J:883:ARG:HG3	1.93	0.51
4:K:13:ILE:HG13	4:K:19:LEU:HB2	1.93	0.51
5:H:118:ASP:HB2	5:H:121:VAL:HG22	1.93	0.51
2:I:916:SER:O	2:I:916:SER:OG	2.25	0.51
7:B:3:DA:H2''	7:B:4:DA:C8	2.46	0.51
3:J:1100:PHE:CD2	3:J:1200:GLU:HB2	2.46	0.51
3:J:121:PRO:O	3:J:123:ARG:NH1	2.43	0.50
3:J:1089:LEU:HA	3:J:1096:PRO:HA	1.92	0.50
2:I:557:ARG:HB3	2:I:587:LEU:HD13	1.94	0.50
7:B:24:DC:H2'	7:B:25:DC:C6	2.47	0.50
3:J:72:CYS:HB3	3:J:88:CYS:SG	2.50	0.50
2:I:163:LYS:HD2	2:I:163:LYS:H	1.77	0.50
2:I:310:ILE:HD11	2:I:324:LYS:HD2	1.92	0.50
3:J:326:SER:OG	3:J:327:LEU:N	2.44	0.50
7:B:27:DC:H2'	7:B:28:DC:C6	2.46	0.50
3:J:807:LEU:HD23	3:J:1255:VAL:HG13	1.93	0.50
2:I:296:VAL:HG12	2:I:316:GLU:HA	1.92	0.50
3:J:422:LEU:HD23	3:J:434:ILE:HD11	1.92	0.50
3:J:954:ASN:HD21	3:J:992:LYS:HG2	1.76	0.50
3:J:114:ILE:HB	3:J:304:ASP:HB2	1.94	0.50
5:H:101:THR:HG22	5:H:143:ARG:HG2	1.94	0.50

Continued on next page...

Continued from previous page...

Atom-1	Atom-2	Interatomic distance (Å)	Clash overlap (Å)
3:J:816:THR:HG22	3:J:818:GLU:H	1.77	0.49
3:J:835:LEU:O	3:J:839:VAL:HB	2.11	0.49
3:J:1190:ILE:HG21	3:J:1196:LEU:HD11	1.94	0.49
2:I:173:ASN:HA	2:I:186:PHE:O	2.12	0.49
2:I:1289:GLU:OE1	2:I:1294:LYS:HD2	2.11	0.49
5:H:124:VAL:HG11	5:H:210:THR:HA	1.94	0.49
2:I:840:SER:OG	2:I:848:GLU:O	2.29	0.49
2:I:1332:SER:HA	3:J:243:PRO:HB2	1.93	0.49
3:J:479:GLU:HG3	3:J:483:LEU:HD12	1.94	0.49
3:J:647:PRO:HG3	3:J:697:MET:HB2	1.95	0.49
2:I:1254:VAL:HG13	2:I:1255:THR:HG23	1.93	0.49
3:J:591:ILE:O	3:J:594:GLN:NE2	2.46	0.49
4:K:15:ASN:HB3	4:K:18:ASP:OD1	2.12	0.49
7:B:36:DT:H2'	7:B:37:DG:C8	2.48	0.49
1:P:13:GLN:OE1	1:P:16:ARG:NH1	2.46	0.49
2:I:1009:ASN:O	2:I:1012:GLU:HG3	2.13	0.49
3:J:961:SER:OG	3:J:983:LYS:NZ	2.45	0.49
4:K:70:GLN:O	4:K:74:GLU:HG3	2.12	0.49
5:H:163:GLU:HA	5:H:166:ARG:HG2	1.95	0.49
5:H:92:VAL:O	5:H:148:ARG:NH2	2.46	0.49
3:J:674:THR:OG1	3:J:677:GLU:OE1	2.31	0.49
3:J:1346:GLY:O	3:J:1350:ASN:ND2	2.41	0.49
3:J:587:LEU:HD21	3:J:608:CYS:HA	1.95	0.48
5:G:92:VAL:O	5:G:148:ARG:NH2	2.38	0.48
2:I:870:ILE:HG21	2:I:931:VAL:HG11	1.94	0.48
3:J:650:LYS:HE3	3:J:762:ASN:HD21	1.78	0.48
1:P:17:ALA:O	1:P:21:LEU:HD23	2.13	0.48
5:G:67:GLU:HG3	5:G:171:LEU:HD22	1.95	0.48
7:B:26:DG:H2'	7:B:27:DC:H6	1.75	0.48
2:I:755:LYS:NZ	2:I:767:GLN:O	2.41	0.48
6:A:22:DG:H5'	6:A:22:DG:C8	2.49	0.48
2:I:141:THR:HB	2:I:514:PHE:HE1	1.79	0.48
2:I:729:ALA:HB1	2:I:755:LYS:HE3	1.95	0.48
3:J:85:CYS:SG	3:J:86:GLU:N	2.86	0.48
4:K:67:ARG:HB2	4:K:67:ARG:NH1	2.29	0.48
2:I:728:ASP:OD2	2:I:730:SER:OG	2.31	0.48
5:G:97:GLU:OE2	5:G:145:LYS:NZ	2.36	0.48
2:I:1240:ASP:HA	3:J:445:LYS:HD2	1.96	0.48
2:I:1336:ASN:N	3:J:23:ALA:O	2.47	0.48
3:J:460:ASP:OD1	3:J:460:ASP:N	2.44	0.48
3:J:504:GLN:OE1	3:J:731:ARG:NH1	2.46	0.48

Continued on next page...

Continued from previous page...

Atom-1	Atom-2	Interatomic distance (Å)	Clash overlap (Å)
3:J:827:GLU:OE2	3:J:827:GLU:HA	2.13	0.48
2:I:30:ILE:HG13	2:I:31:GLN:N	2.28	0.47
2:I:1290:MET:HG3	3:J:347:VAL:HG11	1.94	0.47
3:J:505:ASP:HB2	3:J:629:PHE:HE1	1.79	0.47
3:J:1062:LEU:HD23	3:J:1066:GLU:HB3	1.96	0.47
3:J:1271:SER:HB3	3:J:1297:LYS:HE3	1.96	0.47
1:P:94:HIS:O	1:P:98:VAL:HG13	2.14	0.47
2:I:733:VAL:HG22	2:I:750:ILE:HG12	1.95	0.47
2:I:1030:GLU:OE1	2:I:1033:ARG:NH2	2.46	0.47
2:I:1122:LYS:HG2	2:I:1229:TYR:CZ	2.49	0.47
5:H:86:LYS:HD3	5:H:174:ASP:HB2	1.96	0.47
3:J:885:VAL:HG11	3:J:1255:VAL:HG22	1.96	0.47
7:B:9:DG:H2''	7:B:10:DA:C8	2.50	0.47
1:P:73:ARG:HG3	1:P:73:ARG:HH11	1.80	0.47
2:I:177:ILE:HG23	2:I:183:TRP:CE3	2.50	0.47
4:K:60:ASN:HB3	4:K:63:ILE:HD13	1.97	0.47
2:I:630:VAL:HG23	2:I:631:GLU:HG3	1.96	0.47
3:J:113:HIS:CE1	3:J:115:TRP:HB2	2.49	0.47
3:J:1035:VAL:O	3:J:1112:GLY:CA	2.63	0.47
5:G:233:ASP:O	5:H:218:ARG:NH1	2.47	0.47
7:B:23:DA:H2'	7:B:24:DC:H6	1.79	0.47
3:J:552:ILE:HD11	3:J:570:LYS:HG3	1.95	0.47
3:J:515:ARG:NH2	3:J:718:SER:O	2.48	0.47
2:I:300:ASP:N	2:I:300:ASP:OD1	2.47	0.47
2:I:993:PRO:HD2	2:I:996:ARG:NH2	2.30	0.47
5:H:10:LYS:HB3	5:H:12:ARG:NH1	2.21	0.47
2:I:488:MET:HG3	2:I:489:PRO:HD2	1.97	0.46
2:I:1313:HIS:HB2	3:J:474:LEU:HG	1.97	0.46
3:J:430:HIS:CD2	3:J:432:LEU:HB2	2.49	0.46
3:J:871:LEU:O	3:J:875:ASN:ND2	2.48	0.46
5:G:102:LEU:HD12	5:G:115:ILE:HG12	1.96	0.46
2:I:949:GLU:HG2	2:I:1036:ILE:HG22	1.96	0.46
2:I:951:MET:SD	2:I:951:MET:N	2.88	0.46
2:I:975:ILE:HG22	2:I:1014:LEU:HD13	1.97	0.46
2:I:1010:GLN:O	2:I:1013:GLN:HG2	2.15	0.46
3:J:533:ALA:HB1	3:J:574:VAL:HG13	1.97	0.46
3:J:954:ASN:OD1	3:J:954:ASN:N	2.47	0.46
3:J:978:ARG:HA	3:J:999:TYR:HB2	1.97	0.46
2:I:232:ILE:HG13	2:I:237:LEU:HA	1.97	0.46
2:I:257:ALA:HB3	2:I:262:TYR:HE2	1.80	0.46
2:I:301:TYR:HB2	2:I:311:CYS:SG	2.55	0.46

Continued on next page...

Continued from previous page...

Atom-1	Atom-2	Interatomic distance (Å)	Clash overlap (Å)
3:J:500:ILE:HG23	3:J:500:ILE:O	2.15	0.46
3:J:118:LYS:HD2	3:J:118:LYS:HA	1.79	0.46
3:J:500:ILE:HD12	3:J:500:ILE:HA	1.80	0.46
3:J:316:ILE:HG22	3:J:324:LEU:HD12	1.96	0.46
4:K:45:LYS:O	4:K:49:ILE:HG22	2.15	0.46
8:R:12:U:H2'	8:R:13:A:H8	1.80	0.46
3:J:516:ASP:OD1	3:J:516:ASP:N	2.49	0.46
3:J:1221:LEU:HD22	3:J:1306:LEU:HB2	1.97	0.46
3:J:349:TYR:HE1	3:J:379:PRO:HG2	1.80	0.46
3:J:1104:LYS:NZ	3:J:1125:PRO:O	2.48	0.46
7:B:25:DC:H2'	7:B:26:DG:H8	1.81	0.46
3:J:66:LYS:HA	3:J:66:LYS:HE2	1.98	0.46
3:J:473:THR:HG23	3:J:476:ALA:H	1.81	0.46
3:J:978:ARG:NH2	3:J:1198:VAL:HA	2.30	0.46
1:P:10:LYS:HB2	1:P:13:GLN:HG3	1.98	0.46
1:P:22:GLU:HA	1:P:22:GLU:OE2	2.16	0.46
2:I:28:LEU:HD22	2:I:527:LYS:HD2	1.98	0.46
2:I:46:GLN:HG2	2:I:47:TYR:CD2	2.51	0.46
2:I:213:LEU:HD13	2:I:422:LYS:HG2	1.98	0.46
2:I:242:VAL:HG12	2:I:244:GLU:HG2	1.97	0.46
2:I:339:ASN:HB2	2:I:343:HIS:H	1.81	0.46
2:I:1276:TRP:CE2	3:J:801:VAL:HG11	2.51	0.46
3:J:613:GLY:O	3:J:617:THR:OG1	2.27	0.46
3:J:1029:THR:O	3:J:1118:GLY:N	2.35	0.46
2:I:469:VAL:O	2:I:472:GLU:HG3	2.15	0.45
3:J:222:LYS:HD2	3:J:222:LYS:HA	1.78	0.45
4:K:63:ILE:HA	4:K:66:VAL:HG12	1.98	0.45
3:J:495:ASN:HD22	3:J:1247:LYS:HG3	1.81	0.45
7:B:4:DA:H2''	7:B:5:DG:C8	2.51	0.45
7:B:9:DG:H2''	7:B:10:DA:H8	1.81	0.45
2:I:239:MET:HG2	2:I:287:VAL:HG21	1.98	0.45
2:I:314:ASN:HD21	2:I:348:SER:HA	1.81	0.45
2:I:1106:ARG:HG3	2:I:1106:ARG:NH1	2.30	0.45
3:J:196:GLN:O	3:J:199:GLU:HG3	2.15	0.45
3:J:452:LEU:HB3	3:J:500:ILE:HD11	1.97	0.45
2:I:1073:LYS:HD2	3:J:462:ASP:HB2	1.97	0.45
3:J:264:ASP:OD2	3:J:264:ASP:N	2.50	0.45
3:J:612:LEU:HB3	3:J:616:PRO:HG2	1.97	0.45
3:J:663:GLU:O	3:J:666:GLU:HG3	2.15	0.45
3:J:810:THR:O	3:J:810:THR:OG1	2.33	0.45
6:A:34:DA:H2'	6:A:35:DT:H71	1.97	0.45

Continued on next page...

Continued from previous page...

Atom-1	Atom-2	Interatomic distance (Å)	Clash overlap (Å)
1:P:65:HIS:NE2	2:I:367:TYR:OH	2.32	0.45
2:I:234:ASP:OD1	2:I:235:ASN:N	2.49	0.45
2:I:954:LYS:HE3	2:I:954:LYS:HB3	1.68	0.45
2:I:1217:THR:HA	5:H:41:ASN:ND2	2.32	0.45
5:G:13:LEU:HD11	5:G:16:ILE:HD11	1.98	0.45
6:A:33:DG:H2''	6:A:34:DA:H8	1.81	0.45
1:P:4:TRP:CE2	1:P:58:GLU:HB2	2.52	0.45
2:I:41:GLN:NE2	2:I:73:TYR:O	2.49	0.45
2:I:344:GLY:HA3	2:I:346:TYR:CE2	2.52	0.45
3:J:912:GLY:O	3:J:1360:GLY:N	2.41	0.45
2:I:496:LYS:HB2	2:I:496:LYS:HE2	1.76	0.45
5:H:108:GLY:O	5:H:132:HIS:HA	2.17	0.45
2:I:448:LEU:HD12	2:I:448:LEU:HA	1.84	0.45
2:I:517:GLN:HB3	2:I:759:SER:HB2	1.99	0.45
7:B:25:DC:H2'	7:B:26:DG:C8	2.51	0.45
3:J:985:ILE:HG12	3:J:991:THR:HA	1.99	0.45
3:J:865:HIS:CE1	3:J:867:GLN:HB2	2.52	0.44
2:I:189:ASP:O	2:I:192:ASP:N	2.50	0.44
2:I:944:ARG:HD2	2:I:944:ARG:HA	1.83	0.44
5:G:95:LYS:NZ	5:G:120:ASP:OD2	2.41	0.44
2:I:232:ILE:HD12	2:I:232:ILE:H	1.82	0.44
2:I:575:LEU:HD23	2:I:575:LEU:HA	1.83	0.44
2:I:1101:LEU:HD21	3:J:508:LEU:HD22	2.00	0.44
3:J:301:GLU:HA	3:J:304:ASP:OD1	2.18	0.44
2:I:520:PRO:HG3	2:I:714:VAL:HG21	1.99	0.44
2:I:1024:GLU:O	2:I:1027:LYS:HG2	2.17	0.44
5:H:107:ILE:HG13	5:H:109:PRO:HD3	1.98	0.44
2:I:541:GLU:H	2:I:541:GLU:CD	2.17	0.44
2:I:672:GLU:H	2:I:672:GLU:HG2	1.58	0.44
2:I:870:ILE:HD12	2:I:944:ARG:HG3	1.98	0.44
7:B:18:DA:H2'	7:B:19:DC:H6	1.82	0.44
3:J:31:ARG:NH1	3:J:106:GLU:OE2	2.50	0.44
3:J:808:VAL:HG11	3:J:1359:ALA:HB2	1.98	0.44
5:G:10:LYS:HA	5:G:10:LYS:HD3	1.65	0.44
6:A:12:DG:H2''	6:A:13:DG:C8	2.53	0.44
1:P:21:LEU:HD13	1:P:69:ILE:HD12	2.00	0.44
2:I:478:ARG:HH12	2:I:482:GLY:HA3	1.82	0.44
4:K:55:GLU:OE2	4:K:55:GLU:HA	2.18	0.44
2:I:1276:TRP:CD2	3:J:801:VAL:HG11	2.53	0.44
5:G:45:ARG:NE	5:H:38:THR:HG22	2.30	0.44
3:J:836:ARG:NH1	3:J:870:ASP:OD1	2.48	0.44

Continued on next page...

Continued from previous page...

Atom-1	Atom-2	Interatomic distance (Å)	Clash overlap (Å)
3:J:1027:VAL:HB	3:J:1122:ALA:H	1.83	0.44
2:I:379:GLU:O	2:I:382:GLU:HG3	2.17	0.43
1:P:11:ARG:NH2	6:A:11:DC:H1'	2.33	0.43
2:I:839:VAL:HG12	2:I:1049:ILE:HG12	2.00	0.43
3:J:135:ILE:O	3:J:139:LEU:HB2	2.17	0.43
2:I:802:VAL:HG23	2:I:1096:ILE:HB	2.01	0.43
3:J:320:ASN:HB2	3:J:322:ARG:HH11	1.83	0.43
7:B:24:DC:H2'	7:B:25:DC:H6	1.83	0.43
2:I:1340:GLU:OE1	3:J:1341:ARG:NH1	2.41	0.43
6:A:21:DC:H2''	6:A:22:DG:H5''	1.99	0.43
2:I:275:ARG:HH12	2:I:279:LYS:HB3	1.84	0.43
5:G:49:SER:OG	5:G:50:SER:N	2.51	0.43
5:G:64:VAL:HG11	5:G:171:LEU:HD11	2.00	0.43
2:I:194:LEU:HD12	2:I:194:LEU:HA	1.82	0.43
2:I:616:ILE:HG12	2:I:652:TYR:HB2	1.99	0.43
2:I:861:ALA:HB1	2:I:882:ILE:HD12	2.01	0.43
3:J:619:ILE:HD12	3:J:620:PHE:N	2.33	0.43
3:J:901:ARG:HG2	3:J:903:LEU:H	1.82	0.43
3:J:1073:ASP:OD1	3:J:1073:ASP:N	2.52	0.43
5:G:190:ALA:HB2	5:G:200:LYS:HB3	2.01	0.43
2:I:15:PHE:CG	2:I:1190:ALA:HB2	2.54	0.43
2:I:45:GLY:H	2:I:54:ARG:NH2	2.16	0.43
2:I:184:LEU:HD11	2:I:389:PHE:CE1	2.54	0.43
3:J:255:LEU:HA	3:J:255:LEU:HD23	1.78	0.43
2:I:724:VAL:HA	2:I:734:ILE:HG12	1.99	0.43
2:I:931:VAL:HG22	2:I:1052:VAL:HG22	1.99	0.43
2:I:967:LEU:HD13	2:I:1021:LEU:HD11	2.01	0.43
2:I:1278:LEU:HD23	2:I:1278:LEU:HA	1.85	0.43
3:J:744:ARG:HD2	3:J:763:PHE:CE2	2.53	0.43
6:A:33:DG:H2''	6:A:34:DA:C8	2.54	0.43
7:B:2:DG:H2''	7:B:3:DA:C8	2.53	0.43
2:I:276:GLN:HA	2:I:279:LYS:HG2	2.01	0.43
2:I:971:LEU:O	2:I:975:ILE:HG23	2.19	0.43
5:H:4:SER:OG	5:H:5:VAL:N	2.49	0.43
2:I:178:PRO:HA	2:I:397:LEU:HD12	2.00	0.43
2:I:1146:GLN:NE2	2:I:1150:ASP:OD2	2.48	0.43
3:J:1030:GLU:H	3:J:1030:GLU:HG3	1.64	0.43
3:J:1332:LEU:HD23	3:J:1332:LEU:HA	1.89	0.43
5:H:97:GLU:HG3	5:H:145:LYS:HE3	2.00	0.43
2:I:236:LYS:HA	2:I:236:LYS:HD2	1.74	0.42
3:J:255:LEU:HD11	7:B:28:DC:C2	2.54	0.42

Continued on next page...

Continued from previous page...

Atom-1	Atom-2	Interatomic distance (Å)	Clash overlap (Å)
3:J:1061:VAL:HG21	3:J:1101:LEU:HB3	2.01	0.42
8:R:12:U:H2'	8:R:13:A:C8	2.53	0.42
2:I:263:VAL:HG21	2:I:269:ILE:HG13	2.01	0.42
6:A:16:DG:H1'	6:A:19:DA:N6	2.34	0.42
2:I:1270:PHE:CZ	2:I:1274:GLU:HB3	2.53	0.42
3:J:259:ARG:HE	3:J:259:ARG:HB2	1.68	0.42
3:J:695:LYS:HE2	3:J:695:LYS:HB3	1.86	0.42
3:J:791:ALA:HA	7:B:18:DA:C8	2.54	0.42
5:H:104:LYS:HG2	5:H:110:VAL:HG22	2.00	0.42
5:H:166:ARG:HA	5:H:166:ARG:HD3	1.73	0.42
2:I:657:THR:HB	2:I:1187:PHE:HB2	2.01	0.42
3:J:886:VAL:HA	3:J:1258:ARG:HB2	2.01	0.42
7:B:12:DA:H2''	7:B:13:DA:H8	1.85	0.42
2:I:1313:HIS:HB3	3:J:473:THR:HA	2.02	0.42
2:I:826:ASP:OD1	2:I:829:THR:OG1	2.33	0.42
6:A:29:DT:H2'	6:A:30:DT:H71	2.02	0.42
2:I:538:LEU:HD21	6:A:24:DG:C5	2.55	0.42
3:J:148:GLU:HG3	3:J:177:ASP:OD2	2.19	0.42
3:J:759:ILE:HG12	3:J:771:GLN:HG2	2.02	0.42
2:I:576:SER:HB2	2:I:579:ALA:HB2	2.01	0.42
2:I:985:GLU:CD	2:I:985:GLU:H	2.23	0.42
2:I:1072:ASN:OD1	2:I:1072:ASN:N	2.47	0.42
2:I:1269:ARG:HA	3:J:346:ARG:HA	2.02	0.42
3:J:144:TYR:HA	3:J:180:MET:HG2	2.02	0.42
3:J:1060:VAL:HA	3:J:1105:ALA:O	2.20	0.42
3:J:1183:SER:OG	3:J:1184:ASP:N	2.51	0.42
2:I:56:VAL:HG21	2:I:468:LEU:HG	2.01	0.42
3:J:858:VAL:HG11	3:J:864:LEU:HD21	2.02	0.42
3:J:885:VAL:HG12	3:J:1258:ARG:HD3	2.02	0.42
3:J:982:LEU:HD21	3:J:995:TYR:HB2	2.02	0.42
3:J:1321:SER:OG	3:J:1349:GLU:OE2	2.38	0.42
7:B:27:DC:H2'	7:B:28:DC:H6	1.85	0.42
2:I:98:VAL:N	2:I:121:GLU:OE2	2.53	0.42
2:I:402:ARG:HA	2:I:402:ARG:HD3	1.83	0.42
2:I:468:LEU:HD12	2:I:468:LEU:HA	1.83	0.42
2:I:1117:LEU:HD12	2:I:1117:LEU:HA	1.89	0.42
3:J:425:ARG:HD2	3:J:459:ALA:HB2	2.02	0.42
3:J:744:ARG:HB2	3:J:759:ILE:HB	2.01	0.42
4:K:73:GLN:HA	4:K:76:GLU:OE2	2.20	0.41
2:I:89:GLY:HA2	2:I:140:GLY:HA3	2.02	0.41
2:I:409:LEU:HD11	2:I:428:VAL:HG23	2.01	0.41

Continued on next page...

Continued from previous page...

Atom-1	Atom-2	Interatomic distance (Å)	Clash overlap (Å)
3:J:120:LEU:HD13	6:A:30:DT:H4'	2.01	0.41
3:J:1159:ILE:HG13	3:J:1177:ILE:HG21	2.01	0.41
5:H:9:LEU:HD23	5:H:9:LEU:HA	1.78	0.41
2:I:61:SER:OG	2:I:62:TYR:N	2.53	0.41
2:I:236:LYS:HB3	2:I:286:GLU:HB2	2.02	0.41
2:I:1016:GLU:HA	2:I:1019:ASP:OD2	2.21	0.41
3:J:128:LEU:O	3:J:157:GLN:NE2	2.50	0.41
2:I:97:ARG:HH11	2:I:123:TYR:HB2	1.85	0.41
2:I:75:LEU:HD23	2:I:75:LEU:HA	1.83	0.41
2:I:550:VAL:HG23	3:J:780:ARG:HG2	2.02	0.41
3:J:774:ILE:HD13	3:J:774:ILE:HA	1.91	0.41
4:K:38:LEU:HD12	4:K:38:LEU:H	1.86	0.41
2:I:724:VAL:HG21	2:I:771:VAL:HG21	2.02	0.41
2:I:992:LEU:HD12	2:I:993:PRO:O	2.21	0.41
3:J:538:ARG:HH12	3:J:634:ARG:HD2	1.85	0.41
3:J:641:ILE:HD12	3:J:641:ILE:HA	1.92	0.41
3:J:678:ARG:HG3	3:J:679:TYR:N	2.35	0.41
3:J:367:GLY:HA3	3:J:448:GLN:HB2	2.02	0.41
3:J:978:ARG:HD2	3:J:999:TYR:CG	2.55	0.41
2:I:147:SER:HB3	2:I:453:ILE:HG23	2.03	0.41
2:I:404:LYS:HA	2:I:404:LYS:HD2	1.90	0.41
2:I:471:VAL:HG21	2:I:498:ILE:HD11	2.03	0.41
3:J:44:ILE:HD12	3:J:252:LEU:HD12	2.03	0.41
3:J:113:HIS:CE1	3:J:307:LEU:HD13	2.56	0.41
3:J:510:LEU:HD11	3:J:624:ILE:HG23	2.01	0.41
3:J:1177:ILE:HB	3:J:1186:TYR:HB3	2.01	0.41
5:H:30:PRO:HG3	5:H:192:VAL:HG21	2.03	0.41
5:H:178:SER:HA	5:H:179:PRO:HD3	1.91	0.41
6:A:6:DC:H2''	6:A:7:DC:C5	2.56	0.41
2:I:102:LEU:HB2	2:I:489:PRO:HG3	2.03	0.41
2:I:207:THR:HG22	2:I:350:THR:HG22	2.02	0.41
3:J:47:ARG:NH1	6:A:9:DC:OP2	2.53	0.41
3:J:147:ILE:HD12	3:J:179:LYS:HZ3	1.86	0.41
3:J:1025:MET:HA	3:J:1026:PRO:HD3	1.81	0.41
3:J:1146:GLU:OE1	3:J:1310:THR:HG22	2.21	0.41
2:I:943:LYS:HA	2:I:946:LEU:HD12	2.02	0.40
3:J:339:ARG:HE	3:J:339:ARG:HB3	1.75	0.40
3:J:357:VAL:HB	3:J:461:PHE:CE2	2.56	0.40
4:K:71:GLU:HA	4:K:74:GLU:OE1	2.21	0.40
5:H:118:ASP:OD1	5:H:118:ASP:N	2.53	0.40
2:I:479:LEU:HD13	2:I:492:MET:HE1	2.02	0.40

Continued on next page...

Continued from previous page...

Atom-1	Atom-2	Interatomic distance (Å)	Clash overlap (Å)
2:I:678:ARG:HA	2:I:678:ARG:HD2	1.81	0.40
3:J:208:THR:HG21	3:J:213:LYS:HB3	2.02	0.40
6:A:4:DC:H2"	6:A:5:DA:C8	2.56	0.40
3:J:212:THR:O	3:J:215:LYS:HG2	2.22	0.40
3:J:475:GLU:OE1	4:K:28:ARG:NH2	2.54	0.40
3:J:872:LEU:HD21	3:J:880:VAL:HG21	2.01	0.40
3:J:1273:ASP:OD1	3:J:1273:ASP:N	2.50	0.40
5:G:185:TYR:HB2	5:G:201:LEU:HD11	2.04	0.40
5:G:235:ARG:HH22	5:H:14:VAL:HG12	1.85	0.40
5:H:59:VAL:HG23	5:H:144:ILE:CG2	2.51	0.40
2:I:849:GLU:OE2	2:I:849:GLU:N	2.54	0.40
2:I:976:ARG:HB2	2:I:997:TRP:CZ3	2.50	0.40
3:J:838:ARG:HE	3:J:838:ARG:HB2	1.63	0.40
2:I:18:ARG:NH1	2:I:621:SER:O	2.51	0.40
2:I:1069:ARG:NH2	2:I:1114:GLU:OE2	2.40	0.40
5:G:116:THR:O	5:G:116:THR:OG1	2.36	0.40

There are no symmetry-related clashes.

5.3 Torsion angles [i](#)

5.3.1 Protein backbone [i](#)

In the following table, the Percentiles column shows the percent Ramachandran outliers of the chain as a percentile score with respect to all PDB entries followed by that with respect to all EM entries.

The Analysed column shows the number of residues for which the backbone conformation was analysed, and the total number of residues.

Mol	Chain	Analysed	Favoured	Allowed	Outliers	Percentiles	
1	P	99/164 (60%)	92 (93%)	6 (6%)	1 (1%)	15	49
2	I	1317/1342 (98%)	1295 (98%)	22 (2%)	0	100	100
3	J	1336/1416 (94%)	1303 (98%)	33 (2%)	0	100	100
4	K	81/91 (89%)	80 (99%)	1 (1%)	0	100	100
5	G	231/329 (70%)	226 (98%)	5 (2%)	0	100	100
5	H	228/329 (69%)	219 (96%)	9 (4%)	0	100	100
All	All	3292/3671 (90%)	3215 (98%)	76 (2%)	1 (0%)	100	100

All (1) Ramachandran outliers are listed below:

Mol	Chain	Res	Type
1	P	39	VAL

5.3.2 Protein sidechains [i](#)

In the following table, the Percentiles column shows the percent sidechain outliers of the chain as a percentile score with respect to all PDB entries followed by that with respect to all EM entries.

The Analysed column shows the number of residues for which the sidechain conformation was analysed, and the total number of residues.

Mol	Chain	Analysed	Rotameric	Outliers	Percentiles
1	P	89/143 (62%)	80 (90%)	9 (10%)	7 28
2	I	1140/1157 (98%)	1094 (96%)	46 (4%)	31 65
3	J	1125/1177 (96%)	1076 (96%)	49 (4%)	28 61
4	K	70/75 (93%)	59 (84%)	11 (16%)	2 11
5	G	201/286 (70%)	191 (95%)	10 (5%)	24 57
5	H	198/286 (69%)	190 (96%)	8 (4%)	31 65
All	All	2823/3124 (90%)	2690 (95%)	133 (5%)	30 59

All (133) residues with a non-rotameric sidechain are listed below:

Mol	Chain	Res	Type
1	P	13	GLN
1	P	21	LEU
1	P	27	ASN
1	P	28	CYS
1	P	37	LYS
1	P	42	LYS
1	P	84	SER
1	P	88	VAL
1	P	95	GLN
2	I	1	MET
2	I	70	TYR
2	I	81	ASP
2	I	83	GLN
2	I	91	THR
2	I	101	ARG
2	I	107	ARG

Continued on next page...

Continued from previous page...

Mol	Chain	Res	Type
2	I	111	GLU
2	I	159	SER
2	I	183	TRP
2	I	185	ASP
2	I	193	ASN
2	I	221	LEU
2	I	237	LEU
2	I	264	GLU
2	I	267	ARG
2	I	268	ARG
2	I	321	LEU
2	I	338	THR
2	I	377	THR
2	I	387	ASN
2	I	403	MET
2	I	421	SER
2	I	496	LYS
2	I	508	SER
2	I	518	ASN
2	I	524	ILE
2	I	529	ARG
2	I	545	PHE
2	I	598	VAL
2	I	693	LEU
2	I	697	LYS
2	I	768	MET
2	I	770	CYS
2	I	812	PHE
2	I	957	LYS
2	I	968	GLU
2	I	1066	MET
2	I	1107	MET
2	I	1178	LYS
2	I	1219	GLU
2	I	1236	ASN
2	I	1243	MET
2	I	1289	GLU
2	I	1293	VAL
2	I	1315	MET
3	J	78	LEU
3	J	96	LYS
3	J	115	TRP

Continued on next page...

Continued from previous page...

Mol	Chain	Res	Type
3	J	151	MET
3	J	172	PHE
3	J	177	ASP
3	J	199	GLU
3	J	210	SER
3	J	213	LYS
3	J	227	PHE
3	J	249	LEU
3	J	250	ARG
3	J	264	ASP
3	J	284	ASP
3	J	289	ASP
3	J	304	ASP
3	J	320	ASN
3	J	322	ARG
3	J	431	ARG
3	J	468	VAL
3	J	472	LEU
3	J	485	MET
3	J	513	MET
3	J	553	THR
3	J	566	LYS
3	J	599	LYS
3	J	645	VAL
3	J	710	ASP
3	J	762	ASN
3	J	821	MET
3	J	846	GLU
3	J	873	GLU
3	J	874	GLU
3	J	888	CYS
3	J	891	ASP
3	J	895	CYS
3	J	978	ARG
3	J	982	LEU
3	J	999	TYR
3	J	1023	HIS
3	J	1025	MET
3	J	1093	THR
3	J	1095	MET
3	J	1100	PHE
3	J	1148	ARG

Continued on next page...

Continued from previous page...

Mol	Chain	Res	Type
3	J	1163	VAL
3	J	1167	LYS
3	J	1170	LYS
3	J	1189	MET
4	K	3	ARG
4	K	11	GLU
4	K	15	ASN
4	K	38	LEU
4	K	44	ASP
4	K	65	ASP
4	K	68	GLU
4	K	69	ARG
4	K	72	GLN
4	K	74	GLU
4	K	76	GLU
5	G	49	SER
5	G	77	ASP
5	G	80	GLU
5	G	95	LYS
5	G	139	SER
5	G	152	TYR
5	G	156	SER
5	G	194	GLN
5	G	219[A]	ARG
5	G	219[B]	ARG
5	H	10	LYS
5	H	25	LYS
5	H	38	THR
5	H	68	TYR
5	H	79	LEU
5	H	185	TYR
5	H	186	ASN
5	H	191	ARG

Sometimes sidechains can be flipped to improve hydrogen bonding and reduce clashes. All (3) such sidechains are listed below:

Mol	Chain	Res	Type
2	I	618	GLN
2	I	1108	ASN
2	I	1111	GLN

5.3.3 RNA [i](#)

Mol	Chain	Analysed	Backbone Outliers	Pucker Outliers
8	R	11/17 (64%)	2 (18%)	0

All (2) RNA backbone outliers are listed below:

Mol	Chain	Res	Type
8	R	7	G
8	R	9	C

There are no RNA pucker outliers to report.

5.4 Non-standard residues in protein, DNA, RNA chains [i](#)

There are no non-standard protein/DNA/RNA residues in this entry.

5.5 Carbohydrates [i](#)

There are no monosaccharides in this entry.

5.6 Ligand geometry [i](#)

Of 3 ligands modelled in this entry, 3 are monoatomic - leaving 0 for Mogul analysis.

There are no bond length outliers.

There are no bond angle outliers.

There are no chirality outliers.

There are no torsion outliers.

There are no ring outliers.

No monomer is involved in short contacts.

5.7 Other polymers [i](#)

There are no such residues in this entry.

5.8 Polymer linkage issues [i](#)

There are no chain breaks in this entry.

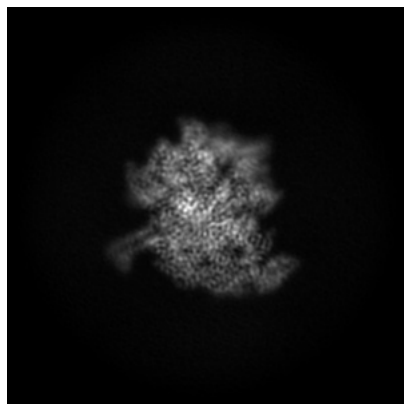
6 Map visualisation [i](#)

This section contains visualisations of the EMDB entry EMD-17632. These allow visual inspection of the internal detail of the map and identification of artifacts.

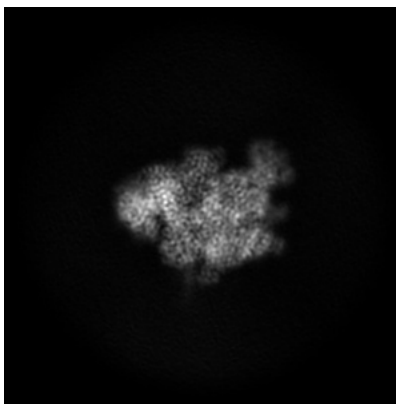
Images derived from a raw map, generated by summing the deposited half-maps, are presented below the corresponding image components of the primary map to allow further visual inspection and comparison with those of the primary map.

6.1 Orthogonal projections [i](#)

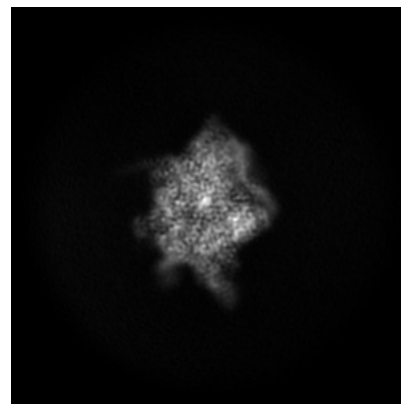
6.1.1 Primary map



X

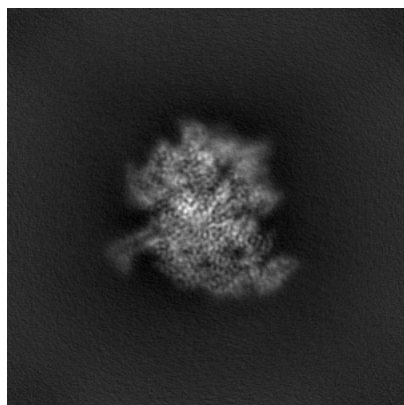


Y

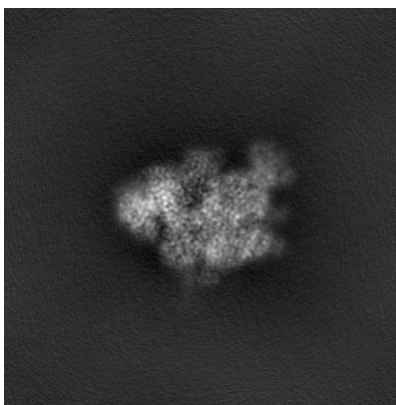


Z

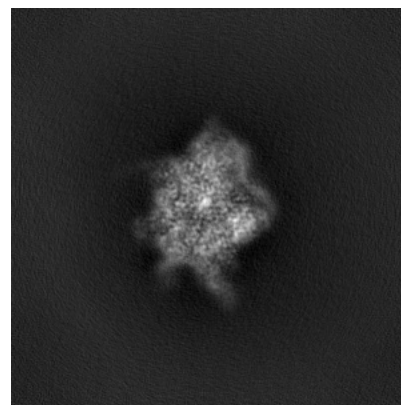
6.1.2 Raw map



X



Y

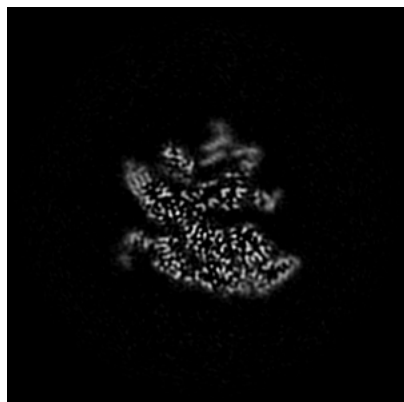


Z

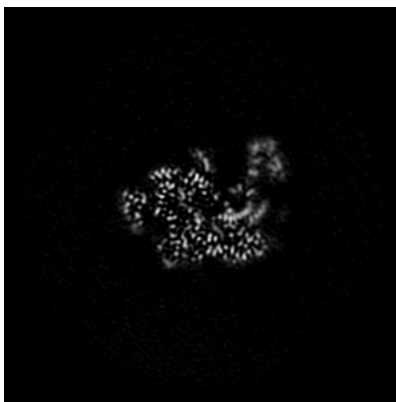
The images above show the map projected in three orthogonal directions.

6.2 Central slices [i](#)

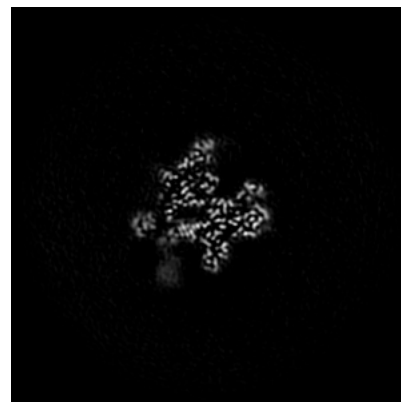
6.2.1 Primary map



X Index: 192

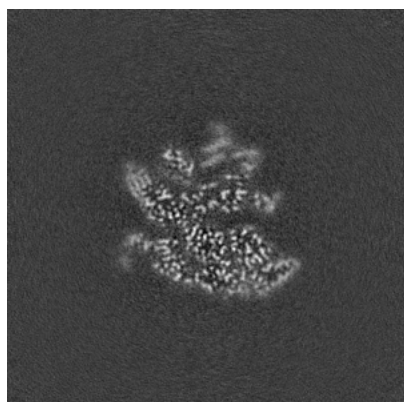


Y Index: 192

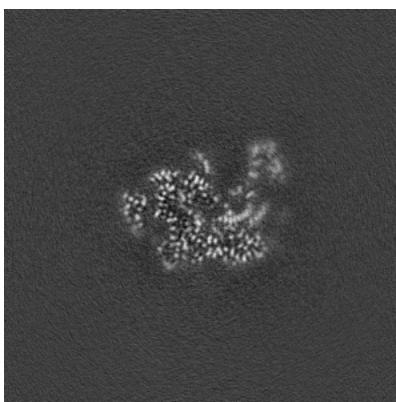


Z Index: 192

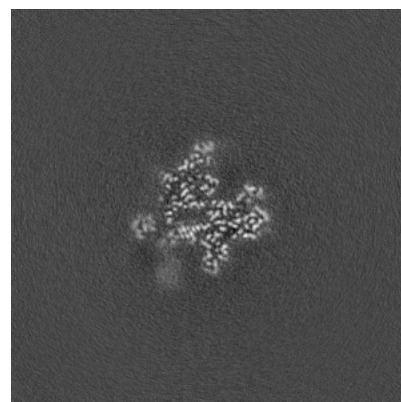
6.2.2 Raw map



X Index: 192



Y Index: 192

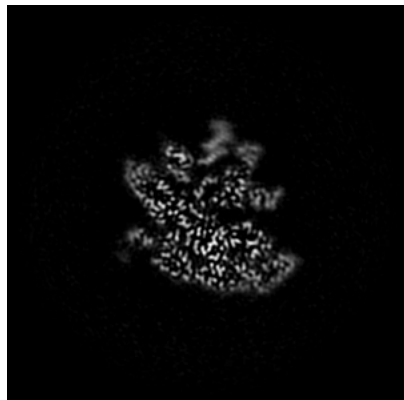


Z Index: 192

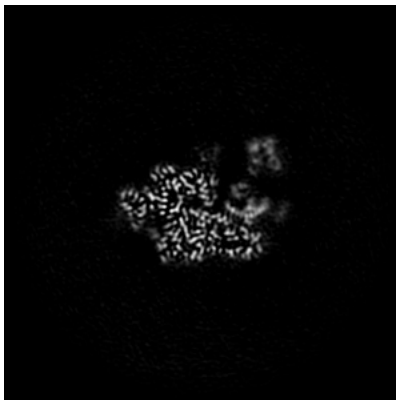
The images above show central slices of the map in three orthogonal directions.

6.3 Largest variance slices [i](#)

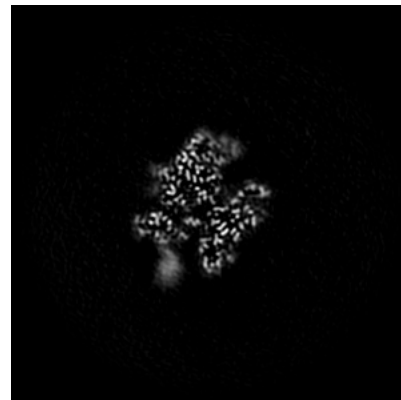
6.3.1 Primary map



X Index: 190

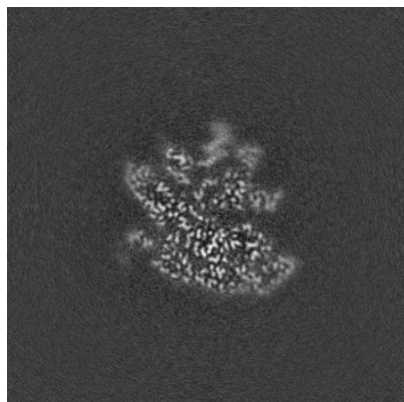


Y Index: 195

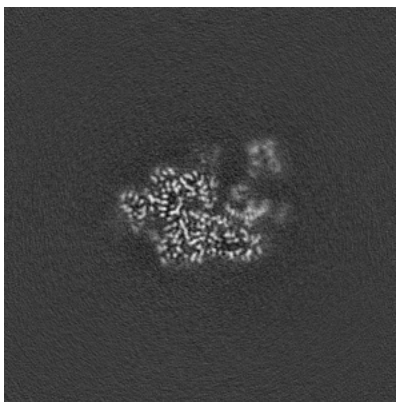


Z Index: 199

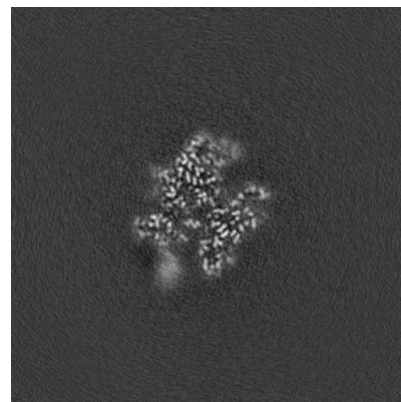
6.3.2 Raw map



X Index: 190



Y Index: 195

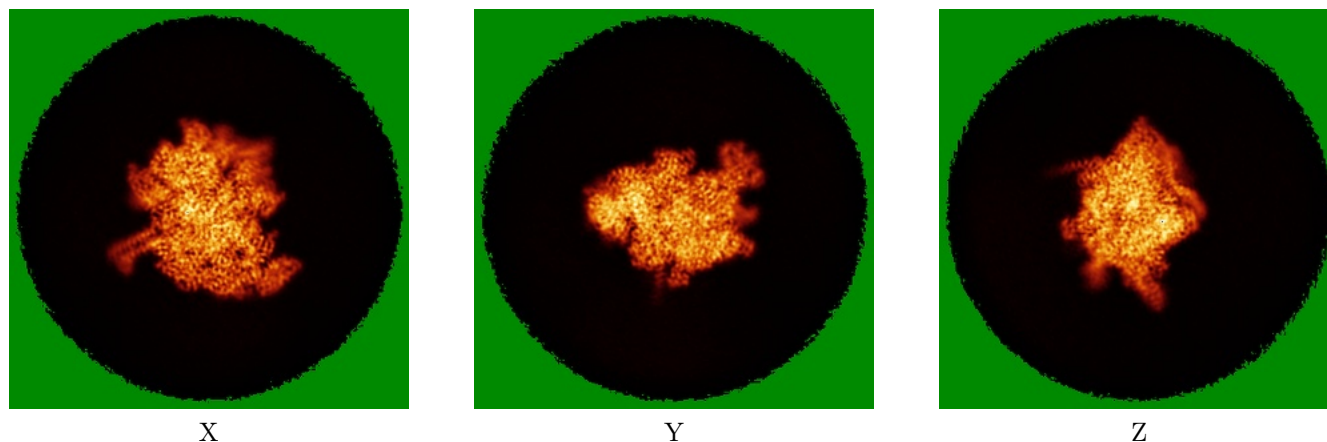


Z Index: 199

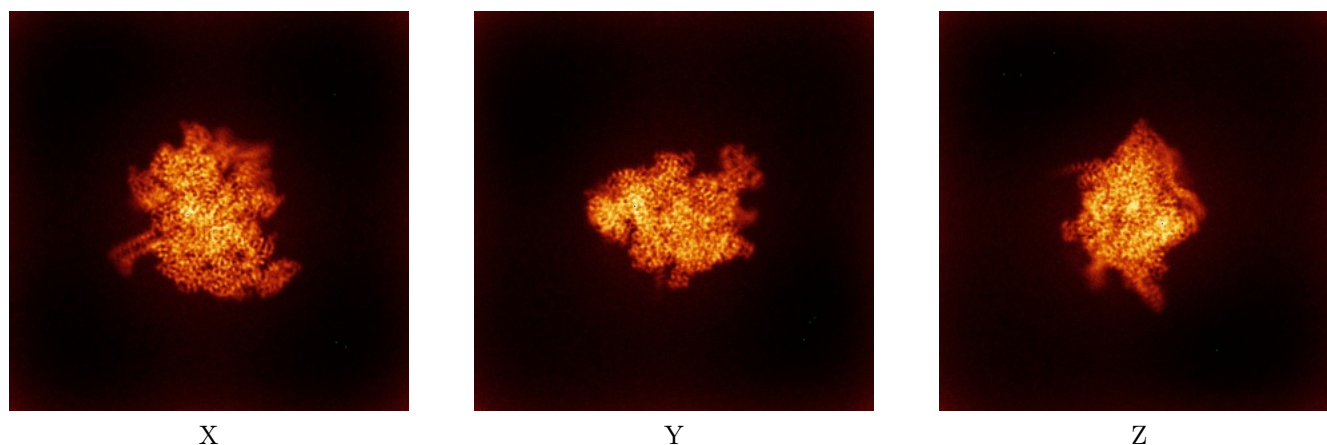
The images above show the largest variance slices of the map in three orthogonal directions.

6.4 Orthogonal standard-deviation projections (False-color) [i](#)

6.4.1 Primary map



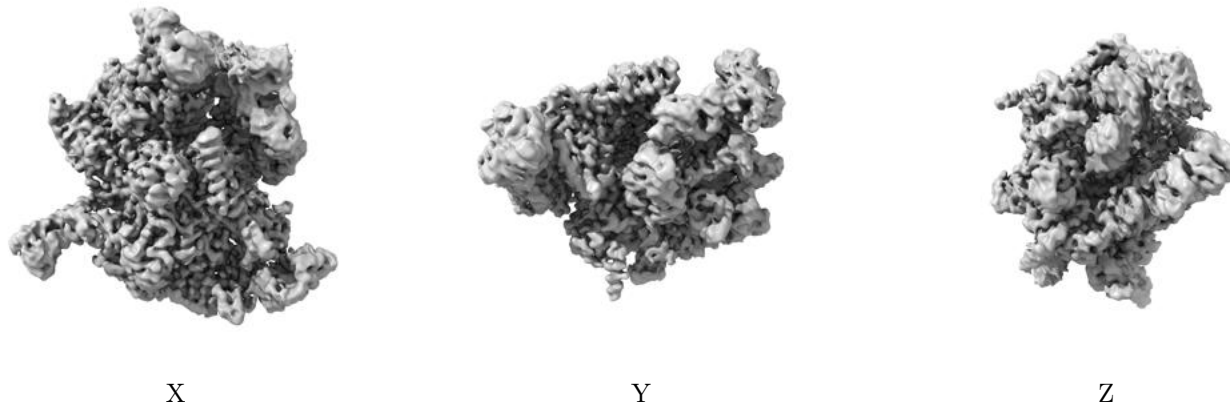
6.4.2 Raw map



The images above show the map standard deviation projections with false color in three orthogonal directions. Minimum values are shown in green, max in blue, and dark to light orange shades represent small to large values respectively.

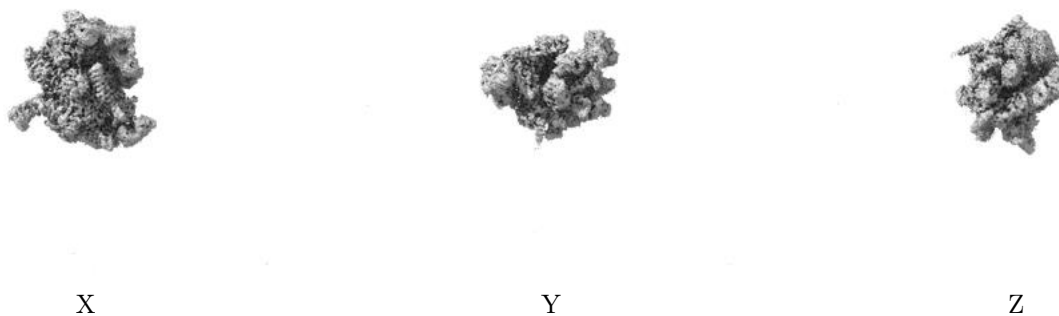
6.5 Orthogonal surface views [i](#)

6.5.1 Primary map



The images above show the 3D surface view of the map at the recommended contour level 0.25. These images, in conjunction with the slice images, may facilitate assessment of whether an appropriate contour level has been provided.

6.5.2 Raw map



These images show the 3D surface of the raw map. The raw map's contour level was selected so that its surface encloses the same volume as the primary map does at its recommended contour level.

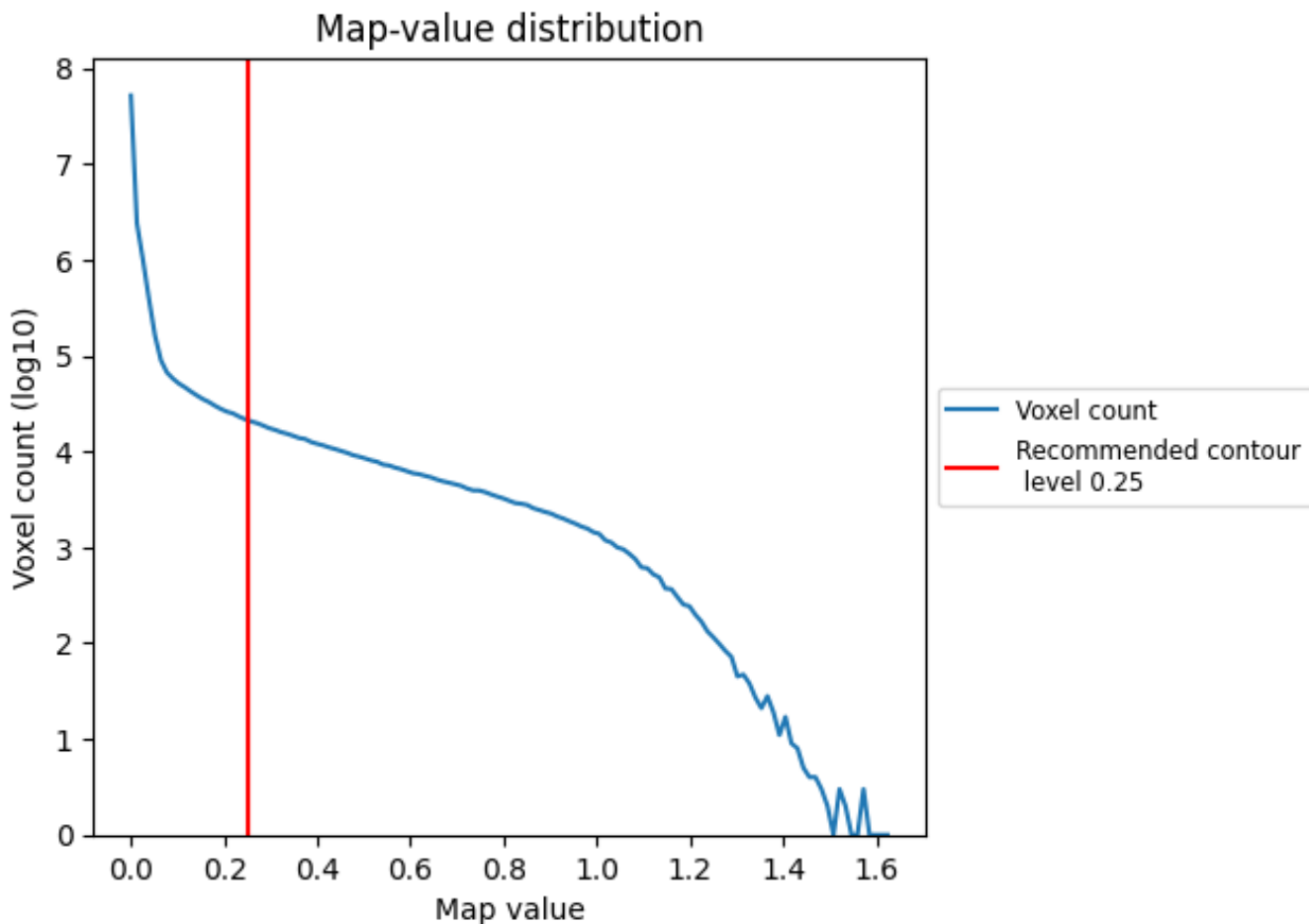
6.6 Mask visualisation [i](#)

This section was not generated. No masks/segmentation were deposited.

7 Map analysis [i](#)

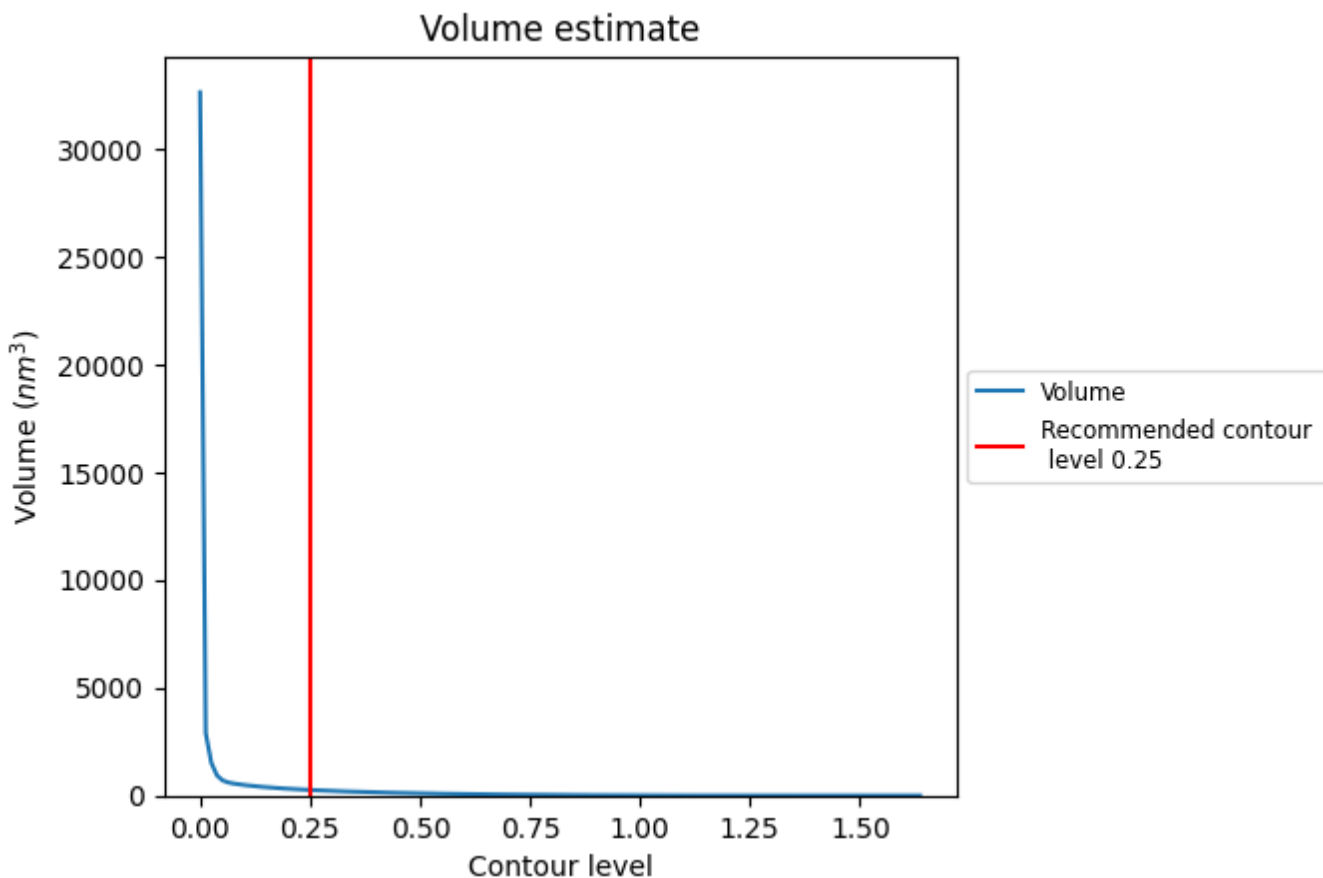
This section contains the results of statistical analysis of the map.

7.1 Map-value distribution [i](#)



The map-value distribution is plotted in 128 intervals along the x-axis. The y-axis is logarithmic. A spike in this graph at zero usually indicates that the volume has been masked.

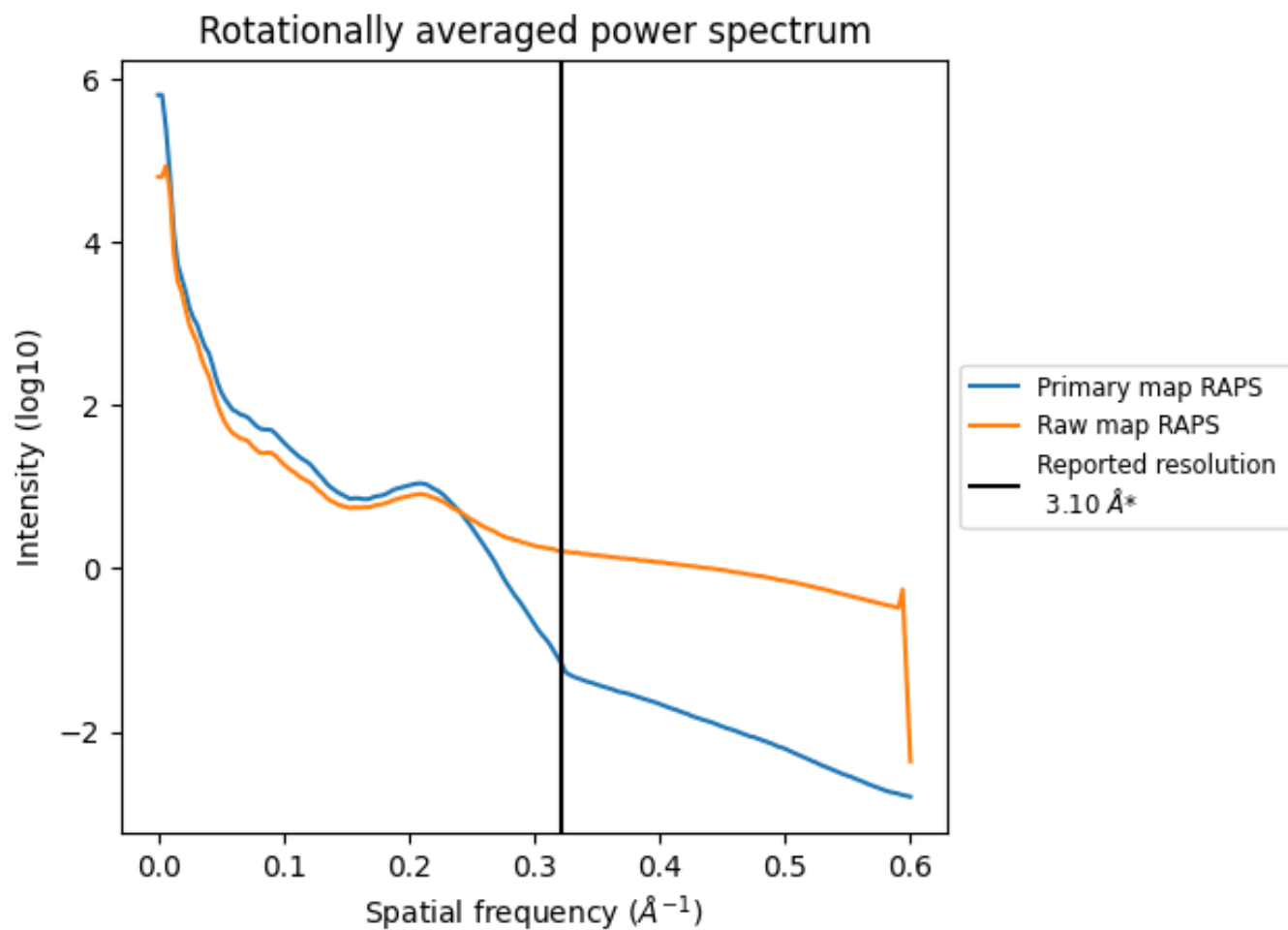
7.2 Volume estimate [i](#)



The volume at the recommended contour level is 260 nm^3 ; this corresponds to an approximate mass of 235 kDa.

The volume estimate graph shows how the enclosed volume varies with the contour level. The recommended contour level is shown as a vertical line and the intersection between the line and the curve gives the volume of the enclosed surface at the given level.

7.3 Rotationally averaged power spectrum i

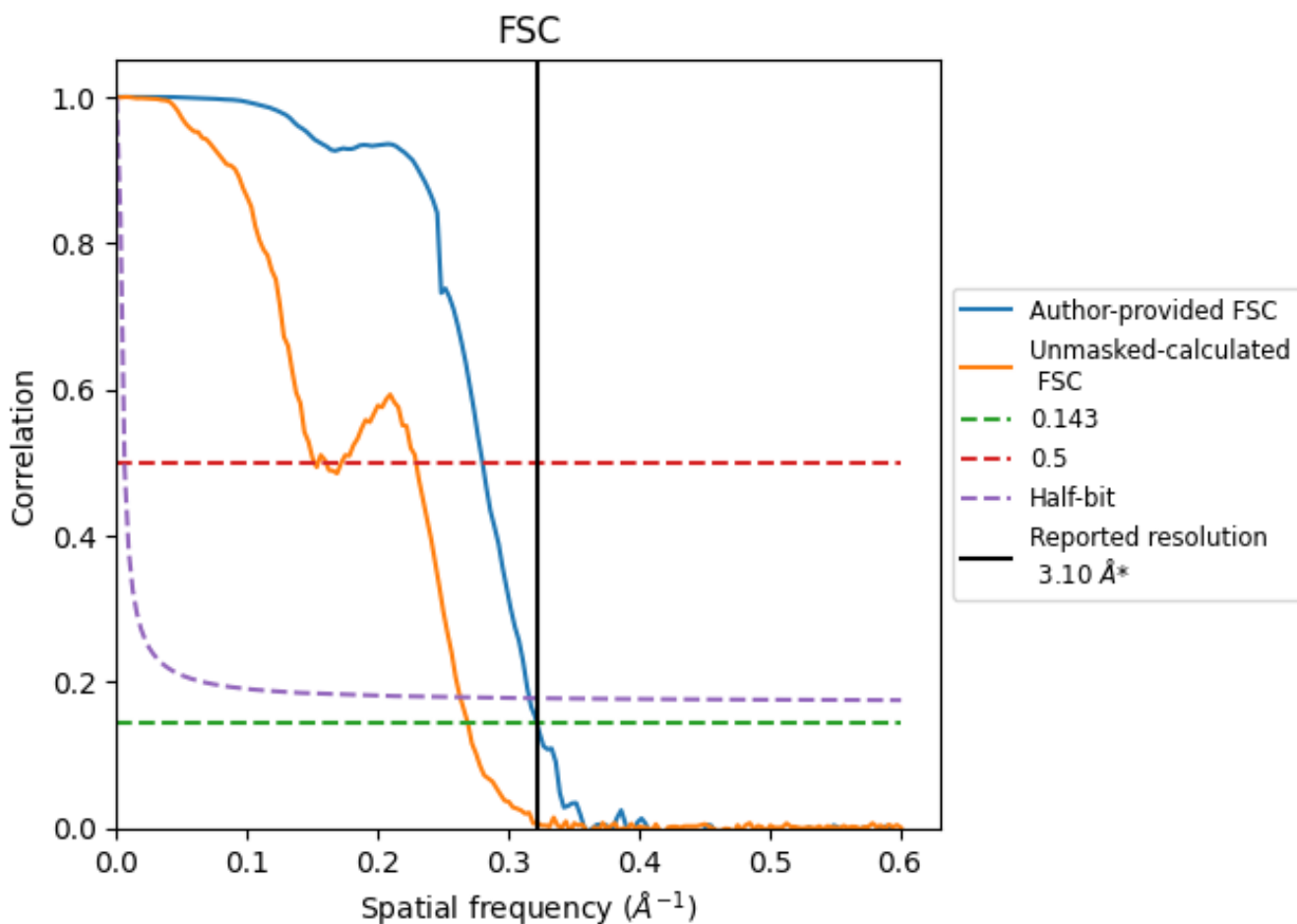


*Reported resolution corresponds to spatial frequency of 0.323 Å⁻¹

8 Fourier-Shell correlation [i](#)

Fourier-Shell Correlation (FSC) is the most commonly used method to estimate the resolution of single-particle and subtomogram-averaged maps. The shape of the curve depends on the imposed symmetry, mask and whether or not the two 3D reconstructions used were processed from a common reference. The reported resolution is shown as a black line. A curve is displayed for the half-bit criterion in addition to lines showing the 0.143 gold standard cut-off and 0.5 cut-off.

8.1 FSC [i](#)



*Reported resolution corresponds to spatial frequency of 0.323 \AA^{-1}

8.2 Resolution estimates [i](#)

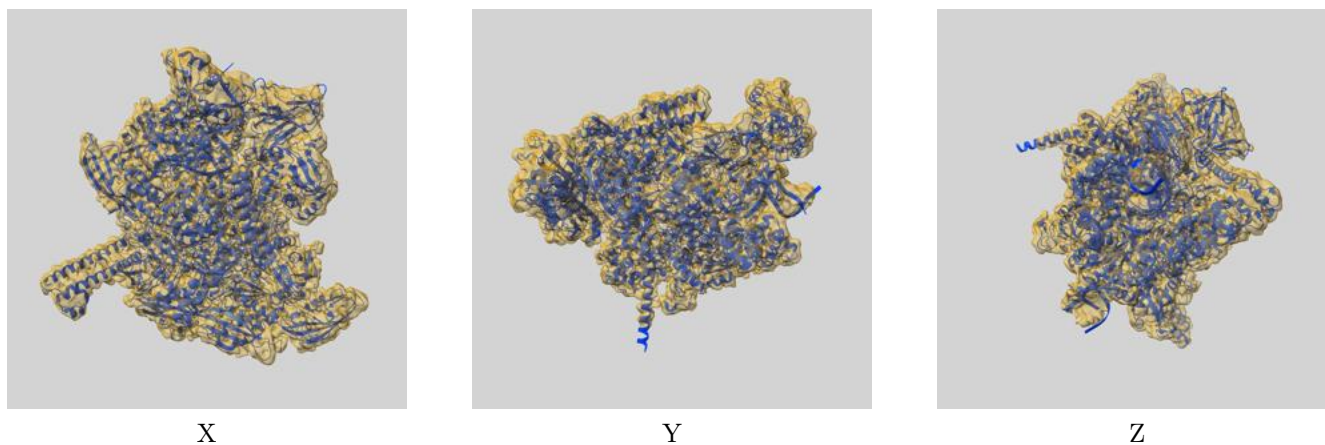
Resolution estimate (Å)	Estimation criterion (FSC cut-off)		
	0.143	0.5	Half-bit
Reported by author	3.10	-	-
Author-provided FSC curve	3.10	3.57	3.16
Unmasked-calculated*	3.71	6.59	3.80

*Resolution estimate based on FSC curve calculated by comparison of deposited half-maps. The value from deposited half-maps intersecting FSC 0.143 CUT-OFF 3.71 differs from the reported value 3.1 by more than 10 %

9 Map-model fit [i](#)

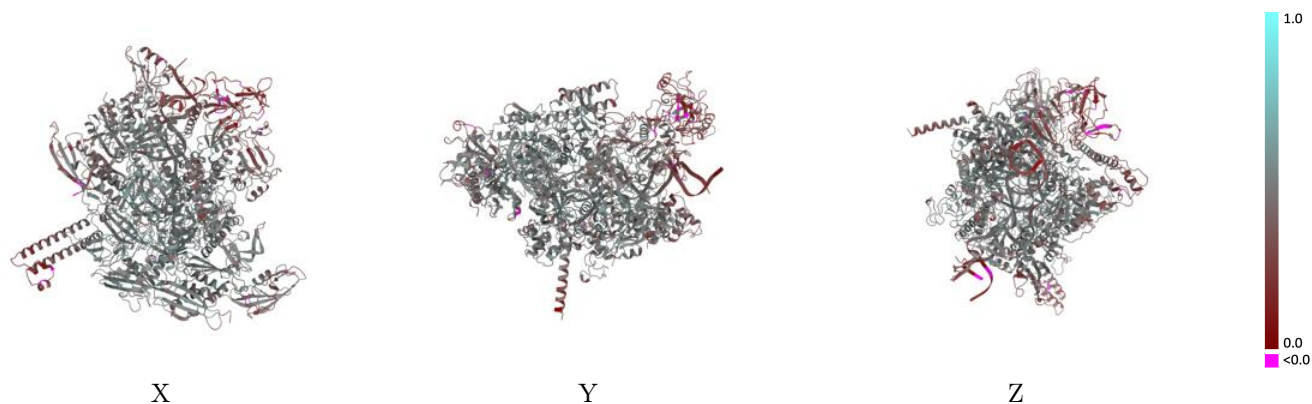
This section contains information regarding the fit between EMDB map EMD-17632 and PDB model 8PEN. Per-residue inclusion information can be found in section 3 on page 7.

9.1 Map-model overlay [i](#)



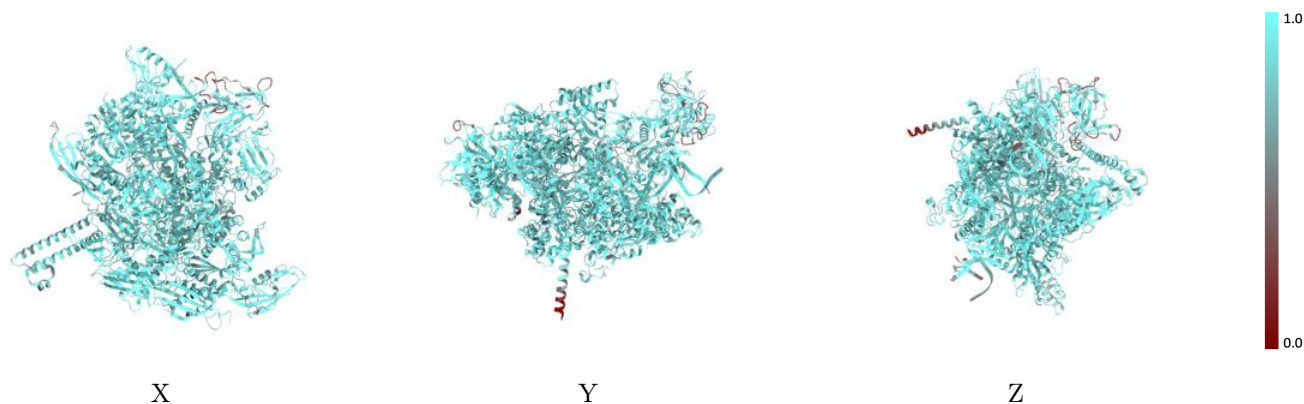
The images above show the 3D surface view of the map at the recommended contour level 0.25 at 50% transparency in yellow overlaid with a ribbon representation of the model coloured in blue. These images allow for the visual assessment of the quality of fit between the atomic model and the map.

9.2 Q-score mapped to coordinate model [i](#)



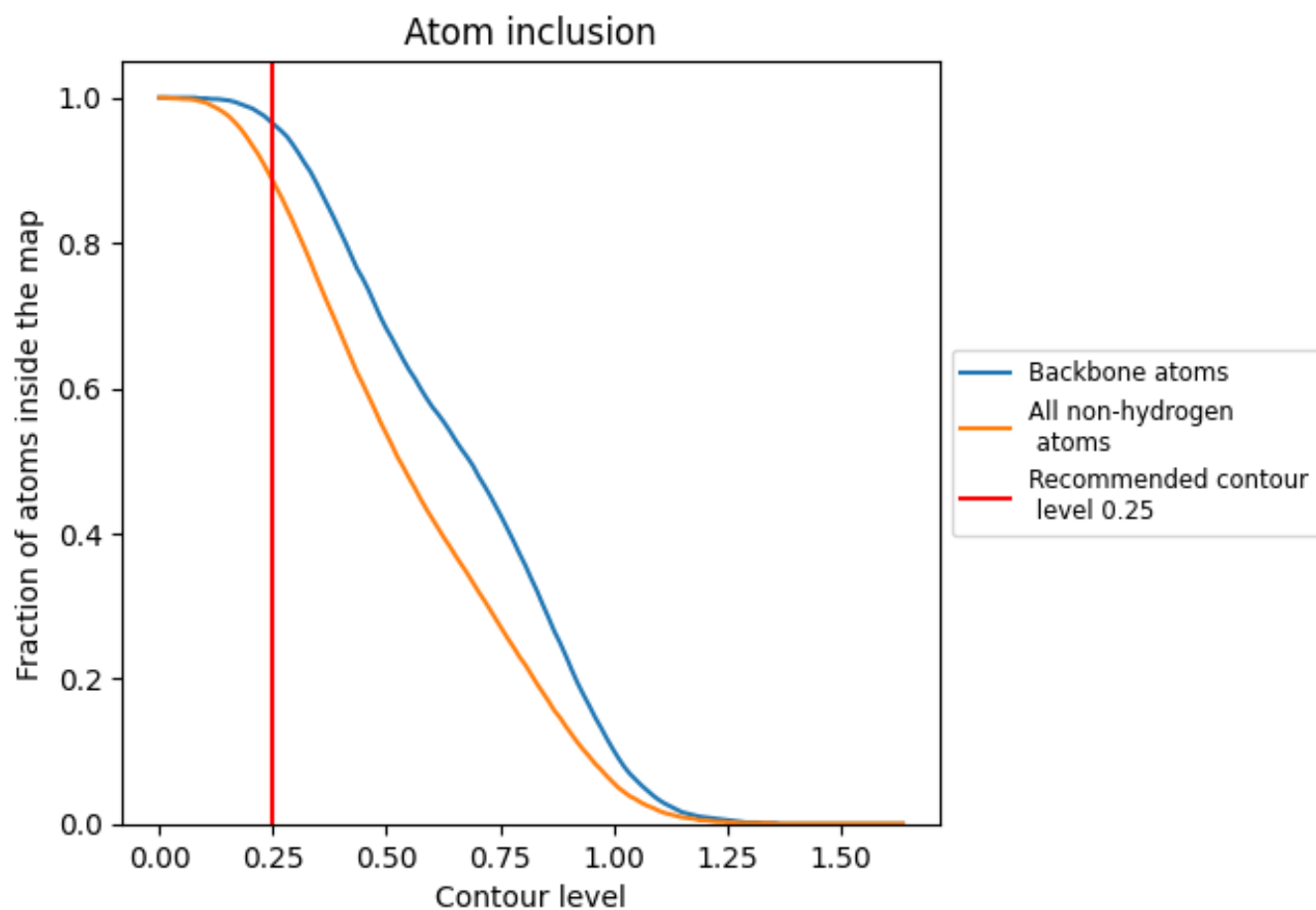
The images above show the model with each residue coloured according to its Q-score. This shows their resolvability in the map with higher Q-score values reflecting better resolvability. Please note: Q-score is calculating the resolvability of atoms, and thus high values are only expected at resolutions at which atoms can be resolved. Low Q-score values may therefore be expected for many entries.

9.3 Atom inclusion mapped to coordinate model [i](#)



The images above show the model with each residue coloured according to its atom inclusion. This shows to what extent they are inside the map at the recommended contour level (0.25).





















9.4 Atom inclusion [i](#)



At the recommended contour level, 96% of all backbone atoms, 88% of all non-hydrogen atoms, are inside the map.

9.5 Map-model fit summary

The table lists the average atom inclusion at the recommended contour level (0.25) and Q-score for the entire model and for each chain.

Chain	Atom inclusion	Q-score
All	 0.8850	 0.4510
A	 0.9050	 0.3580
B	 0.9320	 0.3560
G	 0.9050	 0.4780
H	 0.8790	 0.4310
I	 0.8950	 0.4690
J	 0.8750	 0.4460
K	 0.7680	 0.4350
P	 0.8850	 0.4520
R	 0.9150	 0.4530

