



Full wwPDB X-ray Structure Validation Report ⓘ

Nov 9, 2024 – 12:53 pm GMT

PDB ID : 8P3G
Title : Fusion hSlp2-a_Rab27A bound to covalent hit fragment IMP-1704
Authors : De Vita, E.; Brustur, D.; Tersa, M.; Petracca, R.; Morgan, R.M.L.; Lanyon-Hogg, T.; Norman, J.C.; Cota, E.; Tate, E.W.
Deposited on : 2023-05-17
Resolution : 2.13 Å(reported)

This is a Full wwPDB X-ray Structure Validation Report for a publicly released PDB entry.

We welcome your comments at validation@mail.wwpdb.org

A user guide is available at

<https://www.wwpdb.org/validation/2017/XrayValidationReportHelp>

with specific help available everywhere you see the ⓘ symbol.

The types of validation reports are described at

<http://www.wwpdb.org/validation/2017/FAQs#types>.

The following versions of software and data (see [references ⓘ](#)) were used in the production of this report:

MolProbity : 4.02b-467
Mogul : 1.8.4, CSD as541be (2020)
Xtrriage (Phenix) : 1.13
EDS : 3.0
buster-report : 1.1.7 (2018)
Percentile statistics : 20231227.v01 (using entries in the PDB archive December 27th 2023)
CCP4 : 9.0.003 (Gargrove)
Density-Fitness : 1.0.11
Ideal geometry (proteins) : Engh & Huber (2001)
Ideal geometry (DNA, RNA) : Parkinson et al. (1996)
Validation Pipeline (wwPDB-VP) : 2.39

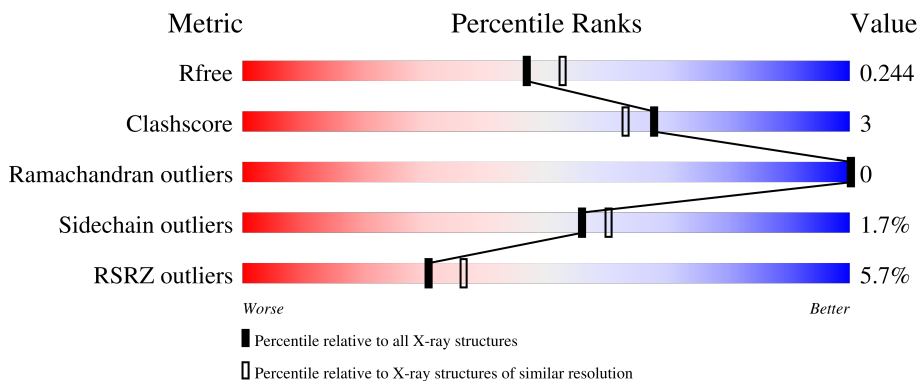
1 Overall quality at a glance

The following experimental techniques were used to determine the structure:

X-RAY DIFFRACTION

The reported resolution of this entry is 2.13 Å.

Percentile scores (ranging between 0-100) for global validation metrics of the entry are shown in the following graphic. The table shows the number of entries on which the scores are based.



Metric	Whole archive (#Entries)	Similar resolution (#Entries, resolution range(Å))
R_{free}	164625	3336 (2.16-2.12)
Clashscore	180529	3585 (2.16-2.12)
Ramachandran outliers	177936	3554 (2.16-2.12)
Sidechain outliers	177891	3553 (2.16-2.12)
RSRZ outliers	164620	3337 (2.16-2.12)

The table below summarises the geometric issues observed across the polymeric chains and their fit to the electron density. The red, orange, yellow and green segments of the lower bar indicate the fraction of residues that contain outliers for ≥ 3 , 2, 1 and 0 types of geometric quality criteria respectively. A grey segment represents the fraction of residues that are not modelled. The numeric value for each fraction is indicated below the corresponding segment, with a dot representing fractions $\leq 5\%$. The upper red bar (where present) indicates the fraction of residues that have poor fit to the electron density. The numeric value is given above the bar.

Mol	Chain	Length	Quality of chain
1	A	230	 5% 86% 5% 8%
1	B	230	 6% 81% 7% 10%

The following table lists non-polymeric compounds, carbohydrate monomers and non-standard residues in protein, DNA, RNA chains that are outliers for geometric or electron-density-fit criteria:

Mol	Type	Chain	Res	Chirality	Geometry	Clashes	Electron density
4	WTU	B	206	-	X	-	-

2 Entry composition [i](#)

There are 6 unique types of molecules in this entry. The entry contains 3833 atoms, of which 0 are hydrogens and 0 are deuteriums.

In the tables below, the ZeroOcc column contains the number of atoms modelled with zero occupancy, the AltConf column contains the number of residues with at least one atom in alternate conformation and the Trace column contains the number of residues modelled with at most 2 atoms.

- Molecule 1 is a protein called Synaptotagmin-like protein 2,Ras-related protein Rab-27A.

Mol	Chain	Residues	Atoms					ZeroOcc	AltConf	Trace
			Total	C	N	O	S			
1	A	211	1686	1067	292	318	9	0	2	0
1	B	207	1693	1077	291	317	8	0	4	0

There are 24 discrepancies between the modelled and reference sequences:

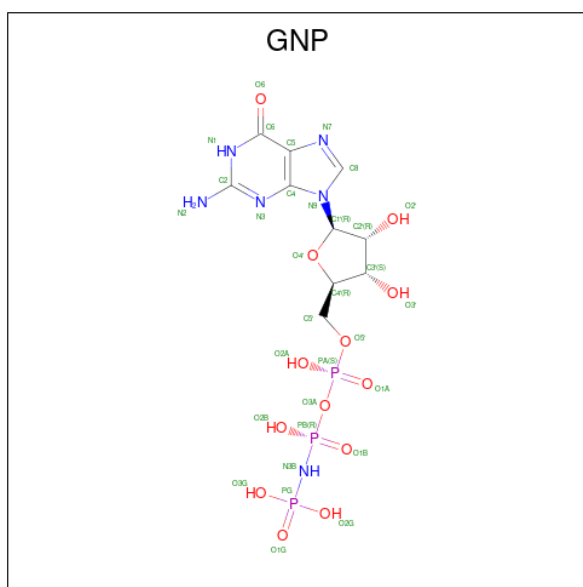
Chain	Residue	Modelled	Actual	Comment	Reference
A	-38	GLY	-	expression tag	UNP Q9HCH5
A	-37	HIS	-	expression tag	UNP Q9HCH5
A	-36	MET	-	expression tag	UNP Q9HCH5
A	-11D	GLY	-	linker	UNP Q9HCH5
A	-11E	SER	-	linker	UNP Q9HCH5
A	-11F	GLY	-	linker	UNP Q9HCH5
A	-11G	SER	-	linker	UNP Q9HCH5
A	-11H	GLY	-	linker	UNP Q9HCH5
A	-11I	SER	-	linker	UNP Q9HCH5
A	-11J	GLY	-	linker	UNP Q9HCH5
A	62	LEU	GLN	engineered mutation	UNP P51159
A	172	SER	CYS	engineered mutation	UNP P51159
B	-38	GLY	-	expression tag	UNP Q9HCH5
B	-37	HIS	-	expression tag	UNP Q9HCH5
B	-36	MET	-	expression tag	UNP Q9HCH5
B	-8A	GLY	-	linker	UNP Q9HCH5
B	-8B	SER	-	linker	UNP Q9HCH5
B	-8C	GLY	-	linker	UNP Q9HCH5
B	-8D	SER	-	linker	UNP Q9HCH5
B	-8E	GLY	-	linker	UNP Q9HCH5
B	-8F	SER	-	linker	UNP Q9HCH5
B	-8G	GLY	-	linker	UNP Q9HCH5
B	61	LEU	GLN	engineered mutation	UNP P51159
B	171	SER	CYS	engineered mutation	UNP P51159

- Molecule 2 is GLYCEROL (three-letter code: GOL) (formula: $C_3H_8O_3$).



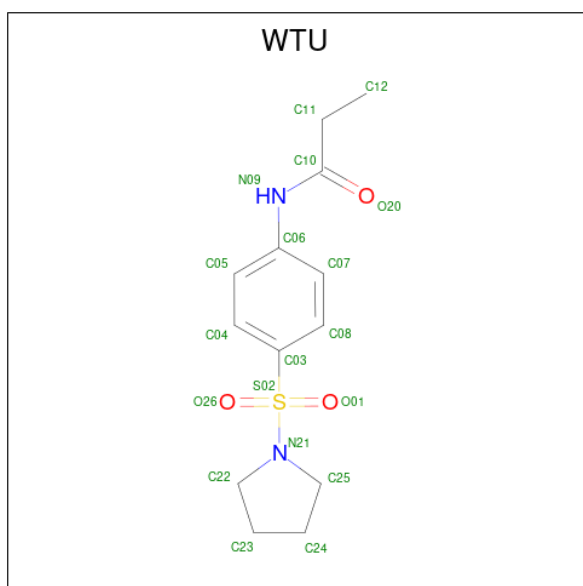
Mol	Chain	Residues	Atoms	ZeroOcc	AltConf
2	A	1	Total C O 6 3 3	0	0
2	A	1	Total C O 6 3 3	0	0
2	A	1	Total C O 6 3 3	0	0
2	B	1	Total C O 6 3 3	0	0
2	B	1	Total C O 6 3 3	0	0
2	B	1	Total C O 6 3 3	0	0
2	B	1	Total C O 6 3 3	0	0

- Molecule 3 is PHOSPHOAMINOPHOSPHONIC ACID-GUANYLATE ESTER (three-letter code: GNP) (formula: $C_{10}H_{17}N_6O_{13}P_3$).



Mol	Chain	Residues	Atoms					ZeroOcc	AltConf
			Total	C	N	O	P		
3	A	1	Total	C	N	O	P	0	0
			32	10	6	13	3		
3	B	1	Total	C	N	O	P	0	0
			32	10	6	13	3		

- Molecule 4 is {N}-(4-pyrrolidin-1-ylsulfonylphenyl)propanamide (three-letter code: WTU) (formula: C₁₃H₁₈N₂O₃S) (labeled as "Ligand of Interest" by depositor).



Mol	Chain	Residues	Atoms					ZeroOcc	AltConf
			Total	C	N	O	S		
4	A	1	Total	C	N	O	S	0	0
			19	13	2	3	1		

Continued on next page...

Continued from previous page...

Mol	Chain	Residues	Atoms					ZeroOcc	AltConf
4	B	1	Total	C	N	O	S	1	0
			19	13	2	3	1		

- Molecule 5 is MAGNESIUM ION (three-letter code: MG) (formula: Mg).

Mol	Chain	Residues	Atoms		ZeroOcc	AltConf
5	A	1	Total	Mg	0	0
			1	1		
5	B	1	Total	Mg	0	0
			1	1		

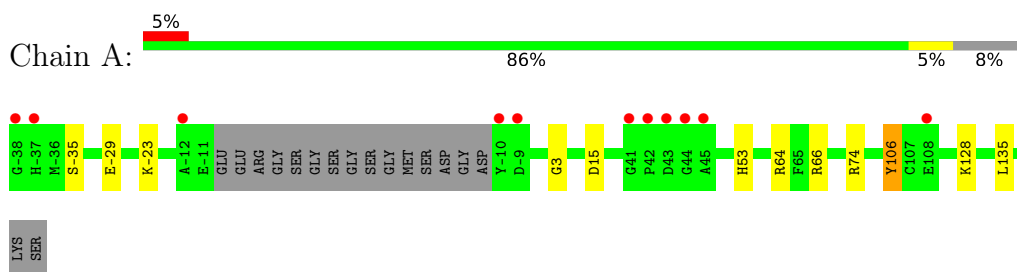
- Molecule 6 is water.

Mol	Chain	Residues	Atoms		ZeroOcc	AltConf
6	A	187	Total	O	0	0
			187	187		
6	B	121	Total	O	0	0
			121	121		

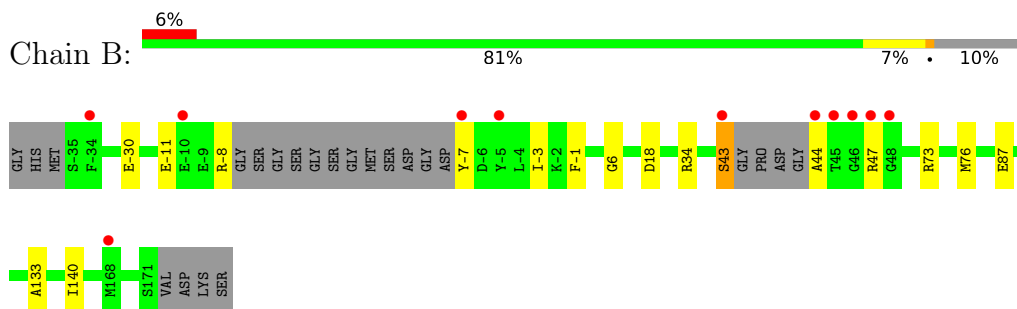
3 Residue-property plots [i](#)

These plots are drawn for all protein, RNA, DNA and oligosaccharide chains in the entry. The first graphic for a chain summarises the proportions of the various outlier classes displayed in the second graphic. The second graphic shows the sequence view annotated by issues in geometry and electron density. Residues are color-coded according to the number of geometric quality criteria for which they contain at least one outlier: green = 0, yellow = 1, orange = 2 and red = 3 or more. A red dot above a residue indicates a poor fit to the electron density ($RSRZ > 2$). Stretches of 2 or more consecutive residues without any outlier are shown as a green connector. Residues present in the sample, but not in the model, are shown in grey.

- Molecule 1: Synaptotagmin-like protein 2,Ras-related protein Rab-27A



- Molecule 1: Synaptotagmin-like protein 2,Ras-related protein Rab-27A



4 Data and refinement statistics

Property	Value	Source
Space group	P 21 21 21	Depositor
Cell constants a, b, c, α , β , γ	62.30Å 76.03Å 118.85Å 90.00° 90.00° 90.00°	Depositor
Resolution (Å)	59.42 – 2.13 59.42 – 2.13	Depositor EDS
% Data completeness (in resolution range)	99.7 (59.42-2.13) 99.7 (59.42-2.13)	Depositor EDS
R_{merge}	(Not available)	Depositor
R_{sym}	(Not available)	Depositor
$\langle I/\sigma(I) \rangle$ ¹	1.61 (at 2.12Å)	Xtrriage
Refinement program	PHENIX (1.17_3644: ???)	Depositor
R, R_{free}	0.190 , 0.241 0.193 , 0.244	Depositor DCC
R_{free} test set	1617 reflections (5.01%)	wwPDB-VP
Wilson B-factor (Å ²)	25.7	Xtrriage
Anisotropy	0.542	Xtrriage
Bulk solvent k_{sol} (e/Å ³), B_{sol} (Å ²)	0.33 , 44.2	EDS
L-test for twinning ²	$\langle L \rangle = 0.49$, $\langle L^2 \rangle = 0.33$	Xtrriage
Estimated twinning fraction	No twinning to report.	Xtrriage
F_o, F_c correlation	0.94	EDS
Total number of atoms	3833	wwPDB-VP
Average B, all atoms (Å ²)	32.0	wwPDB-VP

Xtrriage's analysis on translational NCS is as follows: *The largest off-origin peak in the Patterson function is 5.42% of the height of the origin peak. No significant pseudotranslation is detected.*

¹Intensities estimated from amplitudes.

²Theoretical values of $\langle |L| \rangle$, $\langle L^2 \rangle$ for acentric reflections are 0.5, 0.333 respectively for untwinned datasets, and 0.375, 0.2 for perfectly twinned datasets.

5 Model quality [i](#)

5.1 Standard geometry [i](#)

Bond lengths and bond angles in the following residue types are not validated in this section: WTU, GOL, MG, GNP

The Z score for a bond length (or angle) is the number of standard deviations the observed value is removed from the expected value. A bond length (or angle) with $|Z| > 5$ is considered an outlier worth inspection. RMSZ is the root-mean-square of all Z scores of the bond lengths (or angles).

Mol	Chain	Bond lengths		Bond angles	
		RMSZ	# Z >5	RMSZ	# Z >5
1	A	0.41	0/1713	0.60	1/2304 (0.0%)
1	B	0.43	0/1723	0.98	3/2316 (0.1%)
All	All	0.42	0/3436	0.81	4/4620 (0.1%)

Chiral center outliers are detected by calculating the chiral volume of a chiral center and verifying if the center is modelled as a planar moiety or with the opposite hand. A planarity outlier is detected by checking planarity of atoms in a peptide group, atoms in a mainchain group or atoms of a sidechain that are expected to be planar.

Mol	Chain	#Chirality outliers	#Planarity outliers
1	A	0	1
1	B	0	3
All	All	0	4

There are no bond length outliers.

All (4) bond angle outliers are listed below:

Mol	Chain	Res	Type	Atoms	Z	Observed($^{\circ}$)	Ideal($^{\circ}$)
1	B	105[A]	TYR	O-C-N	-24.85	82.95	122.70
1	B	105[B]	TYR	O-C-N	-24.85	82.95	122.70
1	B	106	CYS	O-C-N	-17.90	94.05	122.70
1	A	106	TYR	O-C-N	-9.12	108.11	122.70

There are no chirality outliers.

All (4) planarity outliers are listed below:

Mol	Chain	Res	Type	Group
1	A	106	TYR	Mainchain
1	B	105[A]	TYR	Mainchain

Continued on next page...

Continued from previous page...

Mol	Chain	Res	Type	Group
1	B	105[B]	TYR	Peptide
1	B	106	CYS	Mainchain

5.2 Too-close contacts [i](#)

In the following table, the Non-H and H(model) columns list the number of non-hydrogen atoms and hydrogen atoms in the chain respectively. The H(added) column lists the number of hydrogen atoms added and optimized by MolProbity. The Clashes column lists the number of clashes within the asymmetric unit, whereas Symm-Clashes lists symmetry-related clashes.

Mol	Chain	Non-H	H(model)	H(added)	Clashes	Symm-Clashes
1	A	1686	0	1661	10	0
1	B	1693	0	1670	16	0
2	A	18	0	24	1	0
2	B	24	0	32	2	0
3	A	32	0	13	1	0
3	B	32	0	13	1	0
4	A	19	0	0	0	0
4	B	19	0	0	1	0
5	A	1	0	0	0	0
5	B	1	0	0	0	0
6	A	187	0	0	2	1
6	B	121	0	0	2	1
All	All	3833	0	3413	24	1

The all-atom clashscore is defined as the number of clashes found per 1000 atoms (including hydrogen atoms). The all-atom clashscore for this structure is 3.

All (24) close contacts within the same asymmetric unit are listed below, sorted by their clash magnitude.

Atom-1	Atom-2	Interatomic distance (Å)	Clash overlap (Å)
1:B:87:GLU:OE2	6:B:301:HOH:O	2.06	0.72
1:A:-29:GLU:OE2	1:A:64:ARG:NH2	2.32	0.58
1:A:128:LYS:HD2	6:A:307:HOH:O	2.03	0.57
1:B:-11:GLU:OE1	1:B:-7:TYR:OH	2.24	0.56
1:B:133:ALA:HB2	2:B:203:GOL:H11	1.92	0.52
1:B:113:LEU:HB2	1:B:140:ILE:HD11	1.93	0.50
1:B:-3:ILE:HG22	1:B:-1[B]:PHE:HE1	1.77	0.50
1:A:135:LEU:HD11	1:A:139:TYR:HE2	1.78	0.48
1:A:3:GLY:H	3:A:202:GNP:HNB3	1.60	0.48

Continued on next page...

Continued from previous page...

Atom-1	Atom-2	Interatomic distance (Å)	Clash overlap (Å)
1:B:133:ALA:HA	2:B:203:GOL:H31	1.95	0.48
1:A:66:ARG:HH12	2:A:204:GOL:H12	1.79	0.47
1:B:-30:GLU:CD	1:B:-30:GLU:H	2.18	0.47
1:A:74[B]:ARG:NH1	1:B:73:ARG:HH11	2.11	0.47
1:B:6:GLY:H	3:B:202:GNP:HNB3	1.61	0.46
1:A:-35:SER:O	1:A:64:ARG:HD2	2.16	0.45
1:B:113:LEU:HB2	1:B:140:ILE:CD1	2.48	0.44
1:B:-3:ILE:HG22	1:B:-1[B]:PHE:CE1	2.52	0.43
1:B:43:SER:HA	1:B:44:ALA:O	2.18	0.43
1:B:34:ARG:HD2	6:B:373:HOH:O	2.19	0.42
1:A:74[A]:ARG:HD2	1:B:73:ARG:HD2	2.00	0.42
1:A:139:TYR:OH	6:A:301:HOH:O	2.22	0.42
1:B:76:MET:HA	4:B:206:WTU:C05	2.51	0.41
1:B:-3:ILE:CG2	1:B:-1[B]:PHE:HE1	2.33	0.41
1:A:-23:LYS:HA	1:A:-23:LYS:HD3	1.71	0.40

All (1) symmetry-related close contacts are listed below. The label for Atom-2 includes the symmetry operator and encoded unit-cell translations to be applied.

Atom-1	Atom-2	Interatomic distance (Å)	Clash overlap (Å)
6:A:425:HOH:O	6:B:369:HOH:O[2_554]	1.96	0.24

5.3 Torsion angles [\(i\)](#)

5.3.1 Protein backbone [\(i\)](#)

In the following table, the Percentiles column shows the percent Ramachandran outliers of the chain as a percentile score with respect to all X-ray entries followed by that with respect to entries of similar resolution.

The Analysed column shows the number of residues for which the backbone conformation was analysed, and the total number of residues.

Mol	Chain	Analysed	Favoured	Allowed	Outliers	Percentiles	
1	A	209/230 (91%)	204 (98%)	5 (2%)	0	100	100
1	B	205/230 (89%)	198 (97%)	7 (3%)	0	100	100
All	All	414/460 (90%)	402 (97%)	12 (3%)	0	100	100

There are no Ramachandran outliers to report.

5.3.2 Protein sidechains [i](#)

In the following table, the Percentiles column shows the percent sidechain outliers of the chain as a percentile score with respect to all X-ray entries followed by that with respect to entries of similar resolution.

The Analysed column shows the number of residues for which the sidechain conformation was analysed, and the total number of residues.

Mol	Chain	Analysed	Rotameric	Outliers	Percentiles	
1	A	176/193 (91%)	174 (99%)	2 (1%)	70	74
1	B	178/193 (92%)	174 (98%)	4 (2%)	47	49
All	All	354/386 (92%)	348 (98%)	6 (2%)	56	60

All (6) residues with a non-rotameric sidechain are listed below:

Mol	Chain	Res	Type
1	A	15	ASP
1	A	53	HIS
1	B	-8	ARG
1	B	18	ASP
1	B	43	SER
1	B	47	ARG

Sometimes sidechains can be flipped to improve hydrogen bonding and reduce clashes. There are no such sidechains identified.

5.3.3 RNA [i](#)

There are no RNA molecules in this entry.

5.4 Non-standard residues in protein, DNA, RNA chains [i](#)

There are no non-standard protein/DNA/RNA residues in this entry.

5.5 Carbohydrates [i](#)

There are no oligosaccharides in this entry.

5.6 Ligand geometry [i](#)

Of 13 ligands modelled in this entry, 2 are monoatomic - leaving 11 for Mogul analysis.

In the following table, the Counts columns list the number of bonds (or angles) for which Mogul statistics could be retrieved, the number of bonds (or angles) that are observed in the model and the number of bonds (or angles) that are defined in the Chemical Component Dictionary. The Link column lists molecule types, if any, to which the group is linked. The Z score for a bond length (or angle) is the number of standard deviations the observed value is removed from the expected value. A bond length (or angle) with $|Z| > 2$ is considered an outlier worth inspection. RMSZ is the root-mean-square of all Z scores of the bond lengths (or angles).

Mol	Type	Chain	Res	Link	Bond lengths			Bond angles		
					Counts	RMSZ	# Z > 2	Counts	RMSZ	# Z > 2
3	GNP	B	202	5	29,34,34	1.65	7 (24%)	33,54,54	2.13	6 (18%)
4	WTU	B	206	1	20,20,20	4.03	9 (45%)	27,28,28	3.50	12 (44%)
2	GOL	B	205	-	5,5,5	0.88	0	5,5,5	1.31	0
2	GOL	A	201	-	5,5,5	0.87	0	5,5,5	0.94	0
4	WTU	A	205	1	20,20,20	3.76	9 (45%)	27,28,28	3.47	12 (44%)
2	GOL	B	201	-	5,5,5	1.17	0	5,5,5	0.86	0
3	GNP	A	202	5	29,34,34	1.62	6 (20%)	33,54,54	2.17	6 (18%)
2	GOL	A	204	-	5,5,5	1.24	0	5,5,5	0.82	0
2	GOL	B	204	-	5,5,5	0.85	0	5,5,5	1.18	0
2	GOL	B	203	-	5,5,5	0.85	0	5,5,5	0.90	0
2	GOL	A	203	-	5,5,5	0.76	0	5,5,5	0.99	0

In the following table, the Chirals column lists the number of chiral outliers, the number of chiral centers analysed, the number of these observed in the model and the number defined in the Chemical Component Dictionary. Similar counts are reported in the Torsion and Rings columns. '-' means no outliers of that kind were identified.

Mol	Type	Chain	Res	Link	Chirals	Torsions	Rings
3	GNP	B	202	5	-	4/14/38/38	0/3/3/3
4	WTU	B	206	1	-	12/18/25/25	0/2/2/2
2	GOL	B	205	-	-	0/4/4/4	-
2	GOL	A	201	-	-	2/4/4/4	-
4	WTU	A	205	1	-	7/18/25/25	0/2/2/2
2	GOL	B	201	-	-	2/4/4/4	-
3	GNP	A	202	5	-	3/14/38/38	0/3/3/3
2	GOL	A	204	-	-	2/4/4/4	-
2	GOL	B	204	-	-	2/4/4/4	-
2	GOL	B	203	-	-	3/4/4/4	-
2	GOL	A	203	-	-	2/4/4/4	-

All (31) bond length outliers are listed below:

Mol	Chain	Res	Type	Atoms	Z	Observed(Å)	Ideal(Å)
4	B	206	WTU	C22-N21	8.05	1.63	1.48
4	A	205	WTU	C22-N21	7.55	1.62	1.48
4	B	206	WTU	S02-N21	7.55	1.74	1.63
4	A	205	WTU	C25-N21	-7.52	1.34	1.48
4	B	206	WTU	C25-N21	-7.29	1.34	1.48
4	A	205	WTU	S02-N21	6.93	1.73	1.63
4	B	206	WTU	C10-N09	6.62	1.50	1.35
4	A	205	WTU	C10-N09	6.36	1.49	1.35
4	B	206	WTU	O26-S02	5.29	1.49	1.43
3	B	202	GNP	PB-O3A	4.96	1.65	1.59
3	A	202	GNP	PB-O3A	4.92	1.65	1.59
4	B	206	WTU	O01-S02	4.57	1.48	1.43
4	A	205	WTU	O26-S02	4.51	1.48	1.43
4	B	206	WTU	C23-C22	-4.50	1.36	1.51
4	A	205	WTU	C23-C22	-4.41	1.36	1.51
4	B	206	WTU	C03-S02	4.21	1.82	1.76
4	A	205	WTU	O01-S02	3.83	1.47	1.43
3	B	202	GNP	C6-N1	3.23	1.38	1.33
3	A	202	GNP	PG-O1G	3.10	1.51	1.46
4	A	205	WTU	C03-S02	3.10	1.80	1.76
3	B	202	GNP	PB-O1B	2.99	1.50	1.46
3	A	202	GNP	C6-N1	2.88	1.38	1.33
4	B	206	WTU	C06-N09	2.79	1.47	1.41
3	A	202	GNP	PG-N3B	2.65	1.70	1.63
3	A	202	GNP	PB-O1B	2.61	1.50	1.46
4	A	205	WTU	C06-N09	2.56	1.46	1.41
3	B	202	GNP	PB-O2B	-2.55	1.49	1.56
3	B	202	GNP	PG-O1G	2.46	1.50	1.46
3	B	202	GNP	PG-N3B	2.35	1.69	1.63
3	A	202	GNP	C5-C6	2.13	1.45	1.41
3	B	202	GNP	C8-N7	-2.05	1.31	1.34

All (36) bond angle outliers are listed below:

Mol	Chain	Res	Type	Atoms	Z	Observed(°)	Ideal(°)
4	B	206	WTU	O26-S02-O01	-12.22	99.72	119.52
4	A	205	WTU	O26-S02-O01	-10.97	101.74	119.52
3	B	202	GNP	C5-C6-N1	-8.53	111.77	123.43
3	A	202	GNP	C5-C6-N1	-8.41	111.93	123.43
4	A	205	WTU	C03-S02-N21	7.39	116.10	107.30
3	A	202	GNP	C2-N1-C6	5.78	125.12	115.93
3	B	202	GNP	C2-N1-C6	5.69	124.97	115.93
4	A	205	WTU	O26-S02-N21	5.47	111.68	106.69

Continued on next page...

Continued from previous page...

Mol	Chain	Res	Type	Atoms	Z	Observed(°)	Ideal(°)
4	B	206	WTU	O01-S02-N21	5.17	111.40	106.69
4	B	206	WTU	O26-S02-C03	4.90	114.25	108.05
4	B	206	WTU	C23-C22-N21	4.80	110.49	103.43
4	A	205	WTU	C22-N21-S02	4.78	127.48	119.97
3	A	202	GNP	O1G-PG-N3B	-4.60	105.00	111.77
4	B	206	WTU	O20-C10-N09	-3.96	116.40	123.63
4	A	205	WTU	C23-C22-N21	3.80	109.02	103.43
4	B	206	WTU	C22-N21-S02	3.79	125.92	119.97
4	A	205	WTU	O01-S02-N21	3.79	110.14	106.69
4	B	206	WTU	C03-S02-N21	3.69	111.69	107.30
4	B	206	WTU	C11-C10-N09	3.65	124.50	114.75
4	A	205	WTU	C11-C10-N09	3.62	124.42	114.75
4	A	205	WTU	O20-C10-N09	-3.55	117.15	123.63
4	A	205	WTU	C25-N21-S02	3.44	125.38	119.97
4	B	206	WTU	O26-S02-N21	3.44	109.83	106.69
4	B	206	WTU	C06-N09-C10	3.07	132.86	127.50
4	B	206	WTU	C24-C25-N21	2.94	107.75	103.43
3	B	202	GNP	N3-C2-N1	-2.86	123.40	127.22
3	A	202	GNP	N3-C2-N1	-2.77	123.53	127.22
4	A	205	WTU	C04-C03-S02	-2.77	116.84	119.76
4	A	205	WTU	C08-C03-S02	2.72	122.62	119.76
4	B	206	WTU	C25-N21-S02	2.68	124.18	119.97
4	A	205	WTU	C24-C25-N21	2.57	107.21	103.43
3	A	202	GNP	C2-N3-C4	-2.36	112.66	115.36
3	A	202	GNP	C4-C5-C6	-2.36	118.54	120.80
3	B	202	GNP	O2B-PB-O1B	2.24	114.61	109.92
3	B	202	GNP	C4-C5-C6	-2.23	118.67	120.80
3	B	202	GNP	O2B-PB-O3A	2.06	111.51	104.64

There are no chirality outliers.

All (39) torsion outliers are listed below:

Mol	Chain	Res	Type	Atoms
2	A	201	GOL	C1-C2-C3-O3
2	A	203	GOL	C1-C2-C3-O3
2	B	201	GOL	C1-C2-C3-O3
2	B	204	GOL	O1-C1-C2-C3
3	A	202	GNP	PA-O3A-PB-O1B
3	A	202	GNP	PA-O3A-PB-O2B
3	B	202	GNP	PB-N3B-PG-O1G
3	B	202	GNP	PG-N3B-PB-O1B
3	B	202	GNP	PA-O3A-PB-O1B

Continued on next page...

Continued from previous page...

Mol	Chain	Res	Type	Atoms
3	B	202	GNP	PA-O3A-PB-O2B
4	A	205	WTU	C22-N21-S02-C03
4	A	205	WTU	C25-N21-S02-C03
4	A	205	WTU	C25-N21-S02-O26
4	A	205	WTU	C22-N21-S02-O26
4	B	206	WTU	C08-C03-S02-N21
4	B	206	WTU	C22-N21-S02-O26
4	B	206	WTU	C25-N21-S02-O26
4	A	205	WTU	O20-C10-N09-C06
4	B	206	WTU	O20-C10-N09-C06
4	B	206	WTU	C04-C03-S02-N21
4	A	205	WTU	C11-C10-N09-C06
4	B	206	WTU	C11-C10-N09-C06
4	B	206	WTU	C25-N21-S02-C03
2	B	204	GOL	O1-C1-C2-O2
2	A	204	GOL	O1-C1-C2-C3
2	B	203	GOL	O1-C1-C2-C3
2	A	203	GOL	O2-C2-C3-O3
2	B	201	GOL	O2-C2-C3-O3
4	B	206	WTU	C22-N21-S02-C03
2	A	201	GOL	O2-C2-C3-O3
4	A	205	WTU	C25-N21-S02-O01
2	A	204	GOL	O1-C1-C2-O2
2	B	203	GOL	O1-C1-C2-O2
4	B	206	WTU	C08-C03-S02-O01
4	B	206	WTU	C04-C03-S02-O01
3	A	202	GNP	PG-N3B-PB-O1B
4	B	206	WTU	C04-C03-S02-O26
4	B	206	WTU	C08-C03-S02-O26
2	B	203	GOL	O2-C2-C3-O3

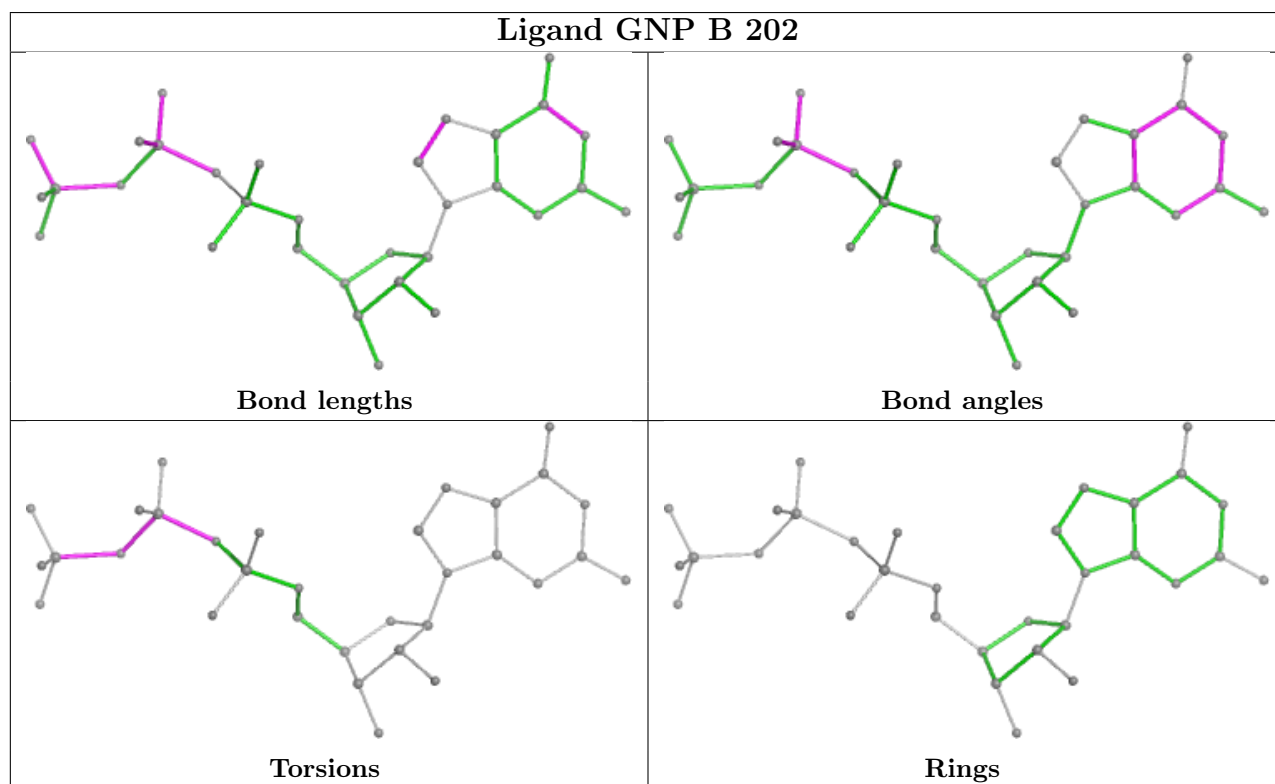
There are no ring outliers.

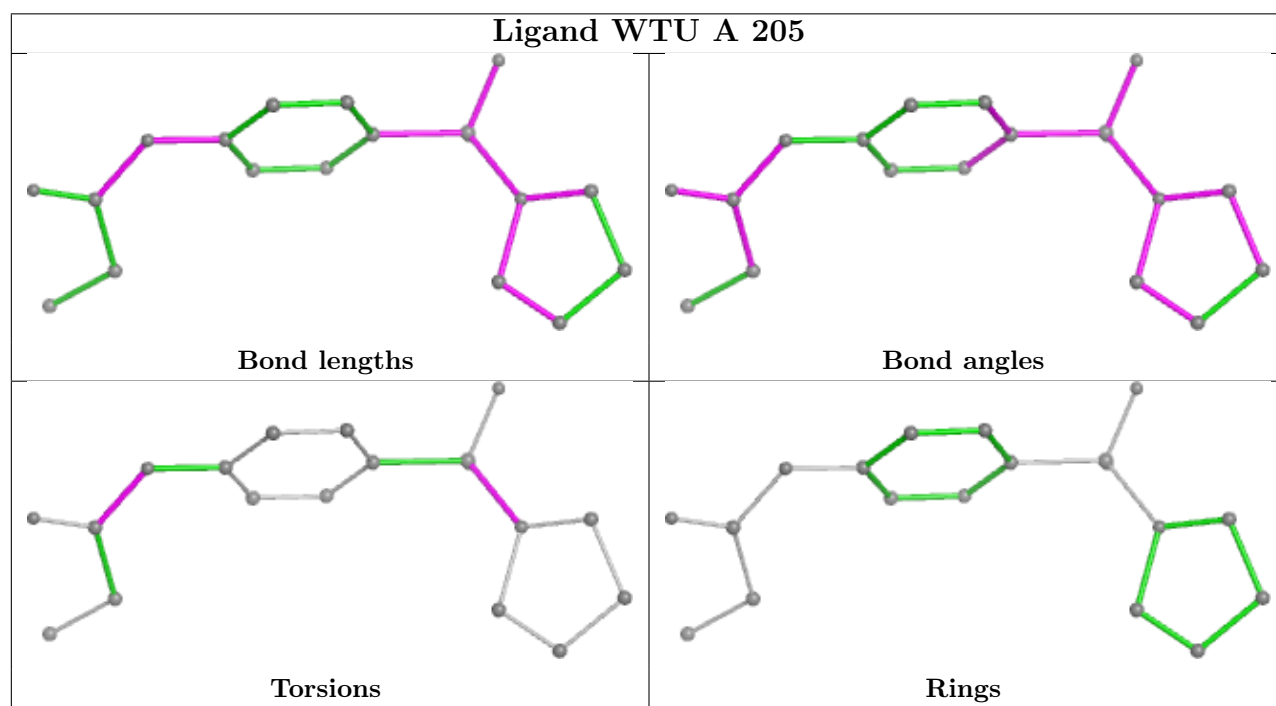
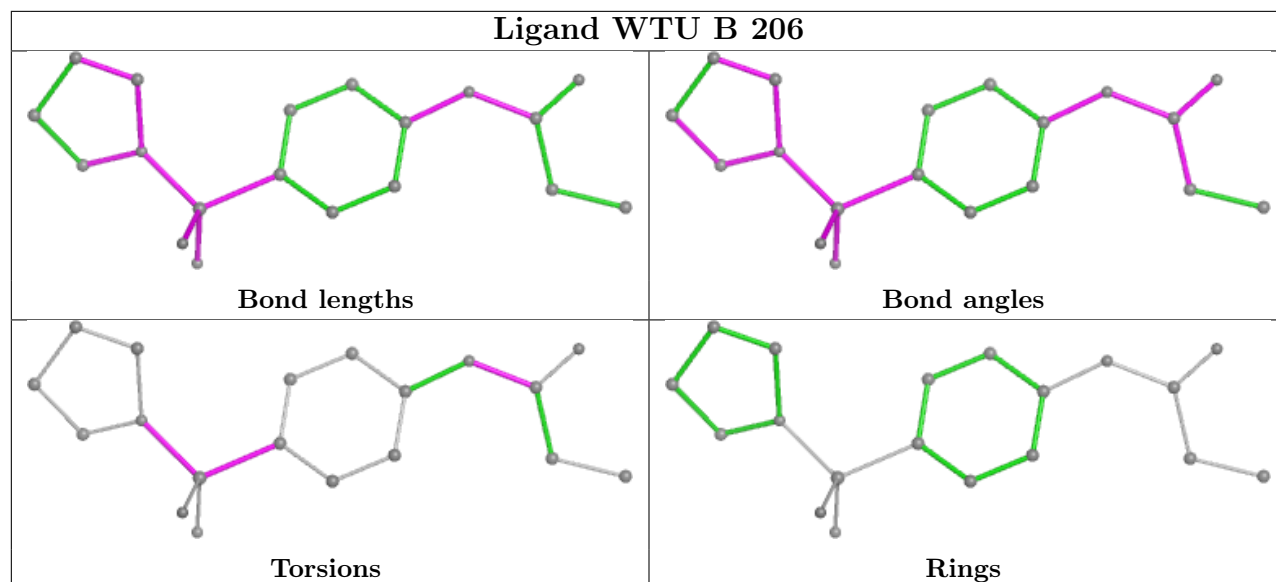
5 monomers are involved in 6 short contacts:

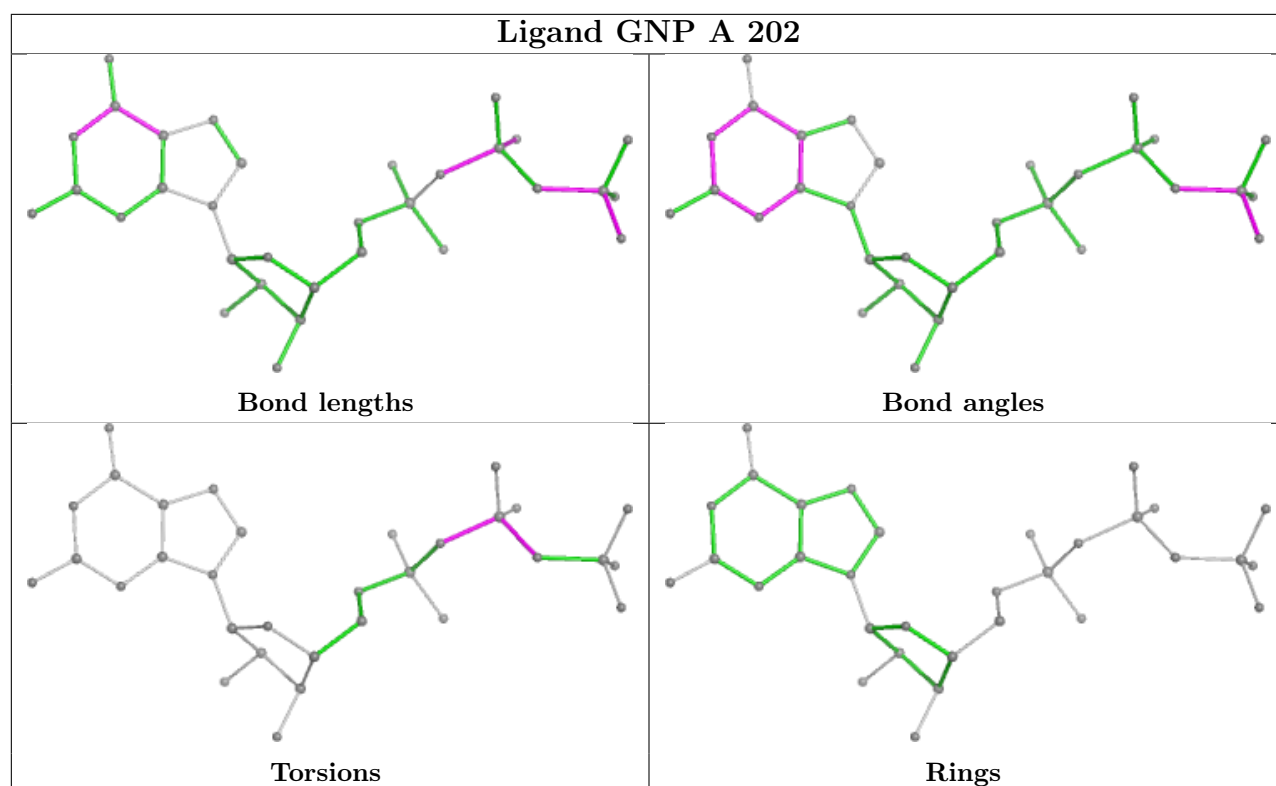
Mol	Chain	Res	Type	Clashes	Symm-Clashes
3	B	202	GNP	1	0
4	B	206	WTU	1	0
3	A	202	GNP	1	0
2	A	204	GOL	1	0
2	B	203	GOL	2	0

The following is a two-dimensional graphical depiction of Mogul quality analysis of bond lengths,

bond angles, torsion angles, and ring geometry for all instances of the Ligand of Interest. In addition, ligands with molecular weight > 250 and outliers as shown on the validation Tables will also be included. For torsion angles, if less than 5% of the Mogul distribution of torsion angles is within 10 degrees of the torsion angle in question, then that torsion angle is considered an outlier. Any bond that is central to one or more torsion angles identified as an outlier by Mogul will be highlighted in the graph. For rings, the root-mean-square deviation (RMSD) between the ring in question and similar rings identified by Mogul is calculated over all ring torsion angles. If the average RMSD is greater than 60 degrees and the minimal RMSD between the ring in question and any Mogul-identified rings is also greater than 60 degrees, then that ring is considered an outlier. The outliers are highlighted in purple. The color gray indicates Mogul did not find sufficient equivalents in the CSD to analyse the geometry.







5.7 Other polymers [i](#)

There are no such residues in this entry.

5.8 Polymer linkage issues [i](#)

There are no chain breaks in this entry.

6 Fit of model and data [i](#)

6.1 Protein, DNA and RNA chains [i](#)

In the following table, the column labelled ‘#RSRZ > 2’ contains the number (and percentage) of RSRZ outliers, followed by percent RSRZ outliers for the chain as percentile scores relative to all X-ray entries and entries of similar resolution. The OWAB column contains the minimum, median, 95th percentile and maximum values of the occupancy-weighted average B-factor per residue. The column labelled ‘Q < 0.9’ lists the number of (and percentage) of residues with an average occupancy less than 0.9.

Mol	Chain	Analysed	<RSRZ>	#RSRZ>2	OWAB(Å ²)	Q<0.9
1	A	211/230 (91%)	-0.17	11 (5%) 34 40	15, 25, 53, 115	2 (0%)
1	B	207/230 (90%)	0.10	13 (6%) 27 33	12, 29, 66, 83	4 (1%)
All	All	418/460 (90%)	-0.04	24 (5%) 30 36	12, 27, 63, 115	6 (1%)

All (24) RSRZ outliers are listed below:

Mol	Chain	Res	Type	RSRZ
1	B	107	GLU	6.6
1	B	44	ALA	5.3
1	A	42	PRO	4.6
1	B	105[A]	TYR	4.5
1	B	-7	TYR	3.8
1	A	41	GLY	3.7
1	A	-9	ASP	3.6
1	A	108	GLU	3.6
1	A	45	ALA	3.4
1	A	-10	TYR	3.4
1	B	45	THR	3.0
1	A	44	GLY	2.8
1	B	168	MET	2.7
1	B	46	GLY	2.7
1	B	48	GLY	2.5
1	B	-5	TYR	2.5
1	B	-34	PHE	2.4
1	A	43	ASP	2.4
1	A	-38	GLY	2.4
1	A	-12	ALA	2.3
1	B	47	ARG	2.2
1	A	-37	HIS	2.2
1	B	-10	GLU	2.1
1	B	43	SER	2.1

6.2 Non-standard residues in protein, DNA, RNA chains [i](#)

There are no non-standard protein/DNA/RNA residues in this entry.

6.3 Carbohydrates [i](#)

There are no monosaccharides in this entry.

6.4 Ligands [i](#)

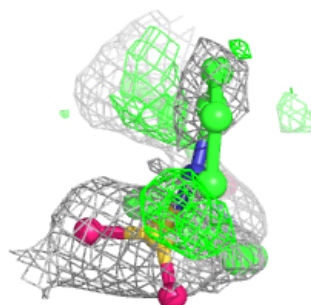
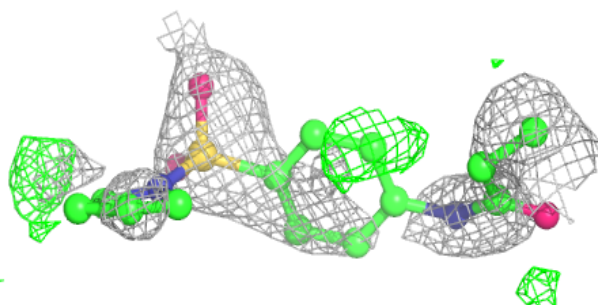
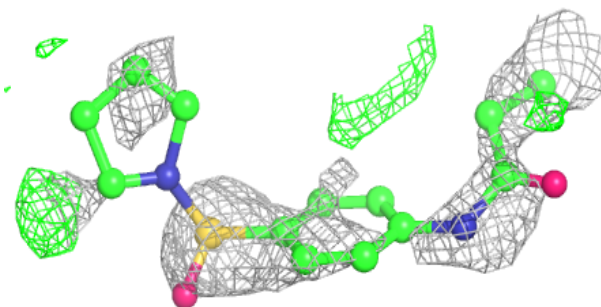
In the following table, the Atoms column lists the number of modelled atoms in the group and the number defined in the chemical component dictionary. The B-factors column lists the minimum, median, 95th percentile and maximum values of B factors of atoms in the group. The column labelled 'Q< 0.9' lists the number of atoms with occupancy less than 0.9.

Mol	Type	Chain	Res	Atoms	RSCC	RSR	B-factors(Å ²)	Q<0.9
2	GOL	B	203	6/6	0.75	0.17	46,51,60,70	0
4	WTU	A	205	19/19	0.75	0.23	31,49,66,71	9
4	WTU	B	206	19/19	0.76	0.22	37,48,60,60	8
2	GOL	A	204	6/6	0.81	0.17	37,39,48,49	0
2	GOL	A	201	6/6	0.90	0.11	31,41,46,49	0
2	GOL	B	205	6/6	0.90	0.12	28,36,40,54	0
2	GOL	B	201	6/6	0.91	0.13	21,35,39,42	0
2	GOL	B	204	6/6	0.92	0.12	27,43,46,48	0
2	GOL	A	203	6/6	0.94	0.09	17,30,35,47	0
3	GNP	A	202	32/32	0.99	0.04	13,17,21,23	0
3	GNP	B	202	32/32	0.99	0.04	15,20,24,25	0
5	MG	B	207	1/1	0.99	0.04	18,18,18,18	0
5	MG	A	206	1/1	1.00	0.04	18,18,18,18	0

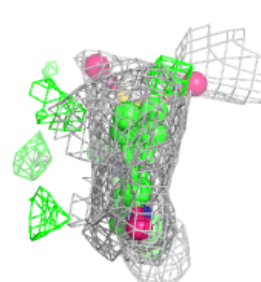
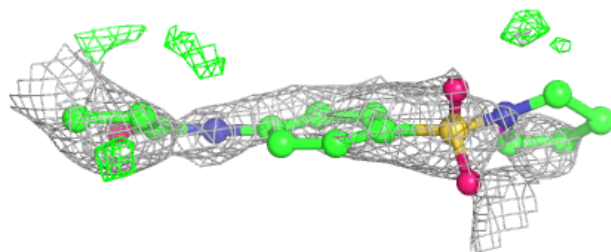
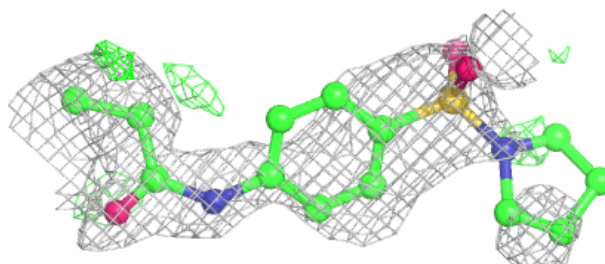
The following is a graphical depiction of the model fit to experimental electron density of all instances of the Ligand of Interest. In addition, ligands with molecular weight > 250 and outliers as shown on the geometry validation Tables will also be included. Each fit is shown from different orientation to approximate a three-dimensional view.

Electron density around WTU A 205:

$2mF_o-DF_c$ (at 0.7 rmsd) in gray
 mF_o-DF_c (at 3 rmsd) in purple (negative)
and green (positive)

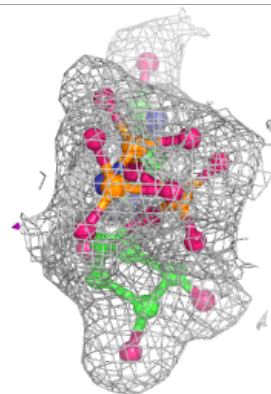
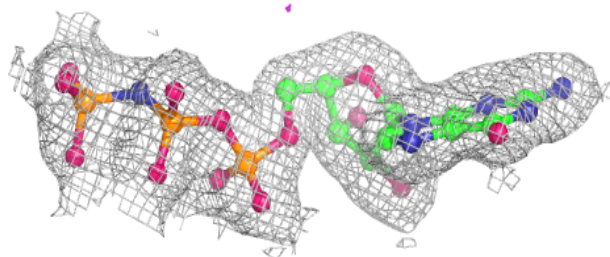
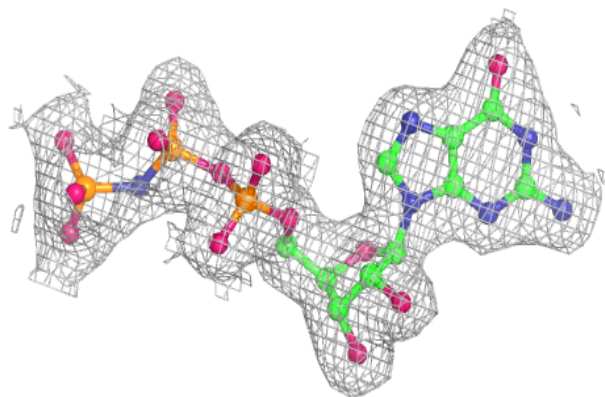
**Electron density around WTU B 206:**

$2mF_o-DF_c$ (at 0.7 rmsd) in gray
 mF_o-DF_c (at 3 rmsd) in purple (negative)
and green (positive)

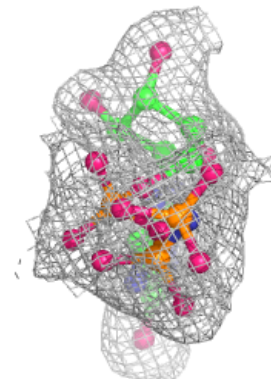
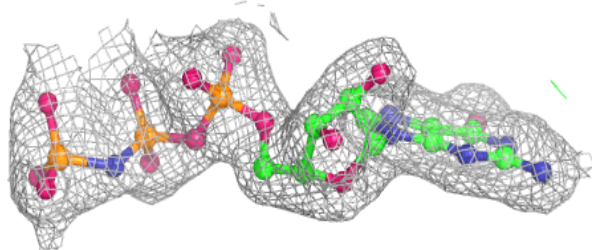
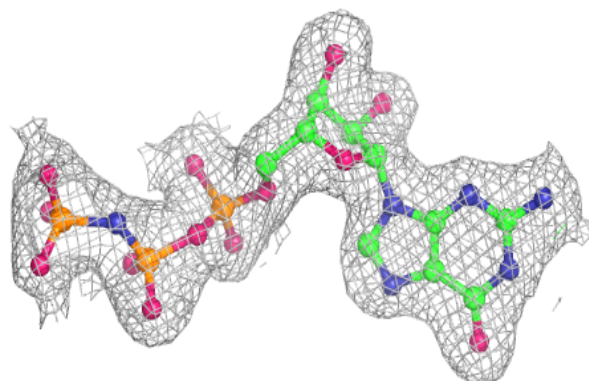


Electron density around GNP A 202:

$2mF_o-DF_c$ (at 0.7 rmsd) in gray
 mF_o-DF_c (at 3 rmsd) in purple (negative)
and green (positive)

**Electron density around GNP B 202:**

$2mF_o-DF_c$ (at 0.7 rmsd) in gray
 mF_o-DF_c (at 3 rmsd) in purple (negative)
and green (positive)



6.5 Other polymers [i](#)

There are no such residues in this entry.