



Full wwPDB X-ray Structure Validation Report ⓘ

Jan 26, 2025 – 06:10 PM EST

PDB ID : 8GJ6
Title : LSD1-CoREST in complex with T16
Authors : Caroli, J.; Mattevi, A.
Deposited on : 2023-03-15
Resolution : 2.77 Å(reported)

This is a Full wwPDB X-ray Structure Validation Report for a publicly released PDB entry.

We welcome your comments at validation@mail.wwpdb.org

A user guide is available at

<https://www.wwpdb.org/validation/2017/XrayValidationReportHelp>

with specific help available everywhere you see the ⓘ symbol.

The types of validation reports are described at

<http://www.wwpdb.org/validation/2017/FAQs#types>.

The following versions of software and data (see [references ⓘ](#)) were used in the production of this report:

MolProbity : 4.02b-467
Mogul : 2022.3.0, CSD as543be (2022)
Xtriage (Phenix) : 1.21
EDS : 3.0
buster-report : 1.1.7 (2018)
Percentile statistics : 20231227.v01 (using entries in the PDB archive December 27th 2023)
CCP4 : 9.0.004 (Gargrove)
Density-Fitness : 1.0.11
Ideal geometry (proteins) : Engh & Huber (2001)
Ideal geometry (DNA, RNA) : Parkinson et al. (1996)
Validation Pipeline (wwPDB-VP) : 2.40

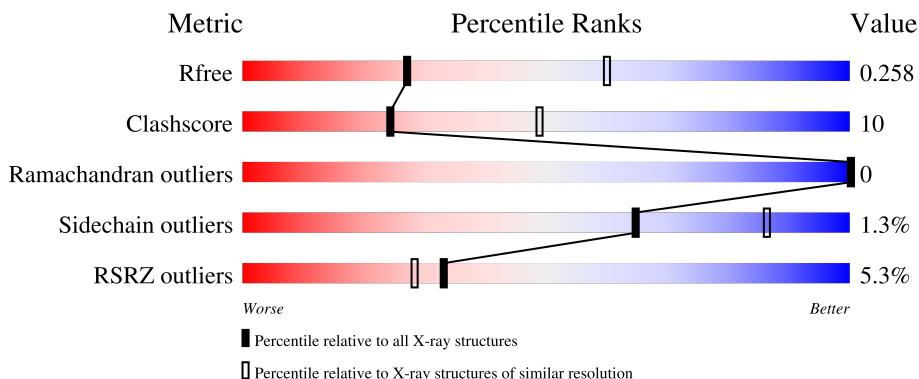
1 Overall quality at a glance i

The following experimental techniques were used to determine the structure:

X-RAY DIFFRACTION

The reported resolution of this entry is 2.77 Å.

Percentile scores (ranging between 0-100) for global validation metrics of the entry are shown in the following graphic. The table shows the number of entries on which the scores are based.



Metric	Whole archive (#Entries)	Similar resolution (#Entries, resolution range(Å))
R_{free}	164625	4924 (2.80-2.76)
Clashscore	180529	5458 (2.80-2.76)
Ramachandran outliers	177936	5386 (2.80-2.76)
Sidechain outliers	177891	5388 (2.80-2.76)
RSRZ outliers	164620	4926 (2.80-2.76)

The table below summarises the geometric issues observed across the polymeric chains and their fit to the electron density. The red, orange, yellow and green segments of the lower bar indicate the fraction of residues that contain outliers for ≥ 3 , 2, 1 and 0 types of geometric quality criteria respectively. A grey segment represents the fraction of residues that are not modelled. The numeric value for each fraction is indicated below the corresponding segment, with a dot representing fractions $\leq 5\%$. The upper red bar (where present) indicates the fraction of residues that have poor fit to the electron density. The numeric value is given above the bar.

Mol	Chain	Length	Quality of chain
1	A	871	
2	B	144	

2 Entry composition

There are 4 unique types of molecules in this entry. The entry contains 6361 atoms, of which 0 are hydrogens and 0 are deuteriums.

In the tables below, the ZeroOcc column contains the number of atoms modelled with zero occupancy, the AltConf column contains the number of residues with at least one atom in alternate conformation and the Trace column contains the number of residues modelled with at most 2 atoms.

- Molecule 1 is a protein called Lysine-specific histone demethylase 1A.

Mol	Chain	Residues	Atoms					ZeroOcc	AltConf	Trace
			Total	C	N	O	S			
1	A	666	5217	3324	906	967	20	0	0	0

There are 19 discrepancies between the modelled and reference sequences:

Chain	Residue	Modelled	Actual	Comment	Reference
A	-18	GLY	-	expression tag	UNP O60341
A	-17	SER	-	expression tag	UNP O60341
A	-16	SER	-	expression tag	UNP O60341
A	-15	HIS	-	expression tag	UNP O60341
A	-14	HIS	-	expression tag	UNP O60341
A	-13	HIS	-	expression tag	UNP O60341
A	-12	HIS	-	expression tag	UNP O60341
A	-11	HIS	-	expression tag	UNP O60341
A	-10	HIS	-	expression tag	UNP O60341
A	-9	SER	-	expression tag	UNP O60341
A	-8	SER	-	expression tag	UNP O60341
A	-7	GLY	-	expression tag	UNP O60341
A	-6	LEU	-	expression tag	UNP O60341
A	-5	VAL	-	expression tag	UNP O60341
A	-4	PRO	-	expression tag	UNP O60341
A	-3	ARG	-	expression tag	UNP O60341
A	-2	GLY	-	expression tag	UNP O60341
A	-1	SER	-	expression tag	UNP O60341
A	0	HIS	-	expression tag	UNP O60341

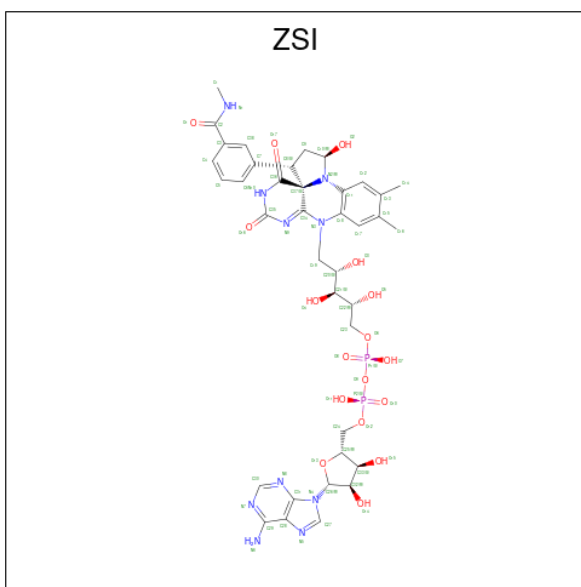
- Molecule 2 is a protein called REST corepressor 1.

Mol	Chain	Residues	Atoms					ZeroOcc	AltConf	Trace
			Total	C	N	O	S			
2	B	133	1076	676	194	203	3	0	0	0

There are 8 discrepancies between the modelled and reference sequences:

Chain	Residue	Modelled	Actual	Comment	Reference
B	297	GLY	-	expression tag	UNP Q9UKL0
B	298	PRO	-	expression tag	UNP Q9UKL0
B	299	LEU	-	expression tag	UNP Q9UKL0
B	300	GLY	-	expression tag	UNP Q9UKL0
B	301	SER	-	expression tag	UNP Q9UKL0
B	302	PRO	-	expression tag	UNP Q9UKL0
B	303	GLU	-	expression tag	UNP Q9UKL0
B	304	PHE	-	expression tag	UNP Q9UKL0

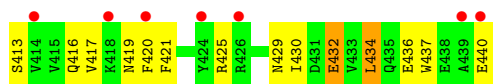
- Molecule 3 is [(2R,3S,4R,5R)-5-(6-amino-9H-purin-9-yl)-3,4-dihydroxyoxolan-2-yl]methyl (2R,3S,4S)-2,3,4-trihydroxy-5-[(1R,3S,3aS,13R)-1-hydroxy-10,11-dimethyl-3-[3-(methyl carbamoyl)phenyl]-4,6-dioxo-2,3,5,6-tetrahydro-1H-benzo[g]pyrrolo[2,1-e]pteridin-8(4H)-yl]pentyl dihydrogen diphosphate (non-preferred name) (three-letter code: ZSI) (formula: C₃₈H₄₆N₁₀O₁₇P₂) (labeled as "Ligand of Interest" by depositor).



Mol	Chain	Residues	Atoms				ZeroOcc	AltConf	
			Total	C	N	O			P
3	A	1	67	38	10	17	2	0	0

- Molecule 4 is POTASSIUM ION (three-letter code: K) (formula: K).

Mol	Chain	Residues	Atoms		ZeroOcc	AltConf
4	A	1	Total	K	0	0
			1	1		



4 Data and refinement statistics

Property	Value	Source
Space group	I 2 2 2	Depositor
Cell constants a, b, c, α , β , γ	118.36Å 178.66Å 234.97Å 90.00° 90.00° 90.00°	Depositor
Resolution (Å)	48.46 – 2.77 48.46 – 2.77	Depositor EDS
% Data completeness (in resolution range)	96.8 (48.46-2.77) 96.8 (48.46-2.77)	Depositor EDS
R_{merge}	0.11	Depositor
R_{sym}	(Not available)	Depositor
$\langle I/\sigma(I) \rangle$ ¹	1.23 (at 2.77Å)	Xtrriage
Refinement program	PHENIX 1.18.2_3874	Depositor
R, R_{free}	0.223 , 0.251 0.228 , 0.258	Depositor DCC
R_{free} test set	61537 reflections (3.24%)	wwPDB-VP
Wilson B-factor (Å ²)	81.9	Xtrriage
Anisotropy	0.431	Xtrriage
Bulk solvent k_{sol} (e/Å ³), B_{sol} (Å ²)	0.33 , 54.1	EDS
L-test for twinning ²	$\langle L \rangle = 0.52$, $\langle L^2 \rangle = 0.35$	Xtrriage
Estimated twinning fraction	No twinning to report.	Xtrriage
F_o, F_c correlation	0.95	EDS
Total number of atoms	6361	wwPDB-VP
Average B, all atoms (Å ²)	91.0	wwPDB-VP

Xtrriage's analysis on translational NCS is as follows: *The largest off-origin peak in the Patterson function is 2.91% of the height of the origin peak. No significant pseudotranslation is detected.*

¹Intensities estimated from amplitudes.

²Theoretical values of $\langle |L| \rangle$, $\langle L^2 \rangle$ for acentric reflections are 0.5, 0.333 respectively for untwinned datasets, and 0.375, 0.2 for perfectly twinned datasets.

5 Model quality [i](#)

5.1 Standard geometry [i](#)

Bond lengths and bond angles in the following residue types are not validated in this section: K, ZSI

The Z score for a bond length (or angle) is the number of standard deviations the observed value is removed from the expected value. A bond length (or angle) with $|Z| > 5$ is considered an outlier worth inspection. RMSZ is the root-mean-square of all Z scores of the bond lengths (or angles).

Mol	Chain	Bond lengths		Bond angles	
		RMSZ	# Z >5	RMSZ	# Z >5
1	A	0.55	0/5331	0.74	1/7232 (0.0%)
2	B	0.56	2/1091 (0.2%)	0.70	2/1471 (0.1%)
All	All	0.55	2/6422 (0.0%)	0.73	3/8703 (0.0%)

All (2) bond length outliers are listed below:

Mol	Chain	Res	Type	Atoms	Z	Observed(Å)	Ideal(Å)
2	B	432	GLU	CB-CG	5.69	1.62	1.52
2	B	432	GLU	CD-OE1	-5.10	1.20	1.25

All (3) bond angle outliers are listed below:

Mol	Chain	Res	Type	Atoms	Z	Observed(°)	Ideal(°)
1	A	392	LEU	CB-CG-CD2	-5.57	101.53	111.00
2	B	434	LEU	CB-CG-CD2	-5.48	101.69	111.00
2	B	436	GLU	CA-CB-CG	5.31	125.08	113.40

There are no chirality outliers.

There are no planarity outliers.

5.2 Too-close contacts [i](#)

In the following table, the Non-H and H(model) columns list the number of non-hydrogen atoms and hydrogen atoms in the chain respectively. The H(added) column lists the number of hydrogen atoms added and optimized by MolProbity. The Clashes column lists the number of clashes within the asymmetric unit, whereas Symm-Clashes lists symmetry-related clashes.

Mol	Chain	Non-H	H(model)	H(added)	Clashes	Symm-Clashes
1	A	5217	0	5252	105	0

Continued on next page...

Continued from previous page...

Mol	Chain	Non-H	H(model)	H(added)	Clashes	Symm-Clashes
2	B	1076	0	1091	29	0
3	A	67	0	0	0	0
4	A	1	0	0	0	0
All	All	6361	0	6343	124	0

The all-atom clashscore is defined as the number of clashes found per 1000 atoms (including hydrogen atoms). The all-atom clashscore for this structure is 10.

All (124) close contacts within the same asymmetric unit are listed below, sorted by their clash magnitude.

Atom-1	Atom-2	Interatomic distance (Å)	Clash overlap (Å)
1:A:346:SER:HA	1:A:351:MET:CE	1.77	1.15
1:A:374:LYS:NZ	1:A:525:ASP:OD1	1.82	1.11
1:A:374:LYS:NZ	1:A:525:ASP:CG	2.07	1.07
1:A:374:LYS:HZ1	1:A:525:ASP:CG	1.59	1.04
1:A:346:SER:HA	1:A:351:MET:HE2	1.37	0.99
1:A:352:GLU:HG2	1:A:568:ARG:HB2	1.58	0.83
2:B:425:ARG:HA	2:B:430:ILE:HD13	1.60	0.82
1:A:591:ARG:HG2	1:A:591:ARG:HH11	1.42	0.81
1:A:346:SER:CA	1:A:351:MET:CE	2.58	0.81
1:A:276:LYS:HD3	1:A:277:LYS:H	1.44	0.79
1:A:606:ASN:HD21	1:A:608:ARG:HE	1.32	0.76
1:A:583:ASP:OD1	1:A:585:LYS:NZ	2.23	0.71
1:A:591:ARG:HH11	1:A:591:ARG:CG	2.04	0.70
1:A:437:THR:OG1	1:A:508:LEU:HD21	1.93	0.69
1:A:661:LYS:HD3	1:A:704:LEU:HD21	1.74	0.69
1:A:188:MET:HB2	1:A:200:ILE:HD11	1.73	0.68
1:A:693:LEU:HD12	1:A:694:PHE:H	1.59	0.68
2:B:413:SER:OG	2:B:416:GLN:OE1	2.13	0.66
1:A:716:GLU:HG2	1:A:750:ARG:HG2	1.76	0.66
2:B:437:TRP:O	2:B:440:GLU:HG3	1.96	0.65
1:A:499:GLU:OE2	1:A:499:GLU:HA	1.96	0.64
1:A:456:LYS:HE2	2:B:370:TYR:OH	1.98	0.64
2:B:416:GLN:HA	2:B:419:ASN:HB2	1.78	0.64
1:A:276:LYS:HD3	1:A:277:LYS:N	2.13	0.64
2:B:321:VAL:O	2:B:325:SER:OG	2.10	0.63
1:A:591:ARG:HG2	1:A:591:ARG:NH1	2.11	0.62
1:A:282:ILE:HG21	1:A:602:VAL:HG21	1.81	0.62
1:A:566:THR:HG21	1:A:697:LEU:HD22	1.80	0.62
1:A:632:GLN:NE2	1:A:758:ARG:HH21	1.98	0.62
1:A:418:LEU:HD21	2:B:324:VAL:HG21	1.81	0.61

Continued on next page...

Continued from previous page...

Atom-1	Atom-2	Interatomic distance (Å)	Clash overlap (Å)
1:A:343:ALA:O	1:A:346:SER:OG	2.17	0.60
1:A:504:LEU:N	1:A:504:LEU:HD23	2.16	0.59
1:A:341:PRO:HG3	1:A:816:LEU:HD21	1.83	0.59
1:A:352:GLU:CG	1:A:568:ARG:HB2	2.32	0.59
1:A:366:ASN:OD1	1:A:367:GLY:N	2.35	0.59
1:A:672:ASP:HB3	1:A:675:VAL:HG22	1.84	0.58
1:A:612:GLN:HG2	1:A:614:PHE:CE2	2.37	0.58
1:A:456:LYS:HG3	2:B:370:TYR:HE1	1.71	0.56
1:A:329:LEU:HD12	1:A:749:SER:HB3	1.88	0.55
1:A:456:LYS:HA	2:B:370:TYR:CE1	2.42	0.55
1:A:526:ARG:NH1	1:A:530:ASP:OD1	2.43	0.52
1:A:463:LYS:O	1:A:467:GLU:HG2	2.09	0.52
1:A:761:TYR:CD1	1:A:809:ALA:HB1	2.44	0.52
1:A:352:GLU:O	1:A:352:GLU:HG3	2.09	0.52
1:A:231:PHE:HE1	1:A:249:VAL:HG12	1.75	0.52
1:A:346:SER:CA	1:A:351:MET:HE1	2.40	0.52
1:A:322:LYS:O	1:A:325:TYR:HB2	2.10	0.51
1:A:418:LEU:CD2	2:B:324:VAL:HG21	2.40	0.51
1:A:647:LYS:HE3	1:A:780:ILE:HD11	1.91	0.51
1:A:695:TRP:HE3	1:A:697:LEU:HD21	1.74	0.51
1:A:469:LYS:HA	1:A:469:LYS:HE2	1.93	0.51
2:B:383:TRP:CD2	2:B:412:LYS:HE2	2.46	0.51
1:A:195:CYS:HA	1:A:835:THR:HG22	1.92	0.51
1:A:456:LYS:HA	2:B:370:TYR:HE1	1.76	0.51
1:A:374:LYS:NZ	1:A:525:ASP:OD2	2.44	0.50
1:A:384:ARG:NH1	2:B:312:LYS:O	2.38	0.50
1:A:188:MET:SD	1:A:200:ILE:HD11	2.51	0.50
1:A:311:ASP:OD1	1:A:311:ASP:N	2.42	0.50
1:A:485:ARG:C	1:A:485:ARG:HD3	2.33	0.50
1:A:245:ASP:OD1	1:A:247:VAL:HG22	2.11	0.49
1:A:266:ILE:HD11	1:A:578:LEU:HD23	1.94	0.49
1:A:353:LEU:HB3	1:A:565:LEU:HD23	1.94	0.49
1:A:601:GLU:OE1	1:A:617:LYS:HE2	2.12	0.49
1:A:205:GLN:O	1:A:209:VAL:HG23	2.12	0.49
1:A:346:SER:CB	1:A:351:MET:CE	2.90	0.49
1:A:447:LYS:HE2	1:A:447:LYS:HB2	1.58	0.49
1:A:456:LYS:HG3	2:B:370:TYR:CE1	2.48	0.48
1:A:564:HIS:C	1:A:565:LEU:HD12	2.34	0.48
2:B:403:GLN:NE2	2:B:403:GLN:HA	2.29	0.48
1:A:724:VAL:HG11	1:A:746:THR:HG21	1.97	0.46
1:A:541:ALA:O	1:A:657:GLY:HA3	2.15	0.46

Continued on next page...

Continued from previous page...

Atom-1	Atom-2	Interatomic distance (Å)	Clash overlap (Å)
1:A:671:TRP:O	1:A:673:PRO:HD3	2.16	0.46
1:A:669:VAL:HG13	1:A:671:TRP:CE2	2.50	0.46
1:A:548:SER:O	1:A:552:TRP:HB3	2.16	0.45
2:B:417:VAL:O	2:B:421:PHE:HD1	1.99	0.45
1:A:603:ILE:HG12	1:A:615:ILE:HD13	1.98	0.45
2:B:425:ARG:HA	2:B:430:ILE:CD1	2.39	0.45
2:B:429:ASN:OD1	2:B:432:GLU:HG3	2.16	0.45
1:A:319:THR:HB	1:A:572:SER:HB3	1.97	0.45
1:A:374:LYS:HZ2	1:A:525:ASP:CG	2.15	0.45
2:B:387:GLU:OE2	2:B:411:ASN:ND2	2.42	0.45
1:A:666:PHE:O	1:A:701:PRO:HG2	2.17	0.44
2:B:310:PRO:HB3	2:B:316:LEU:HD12	1.98	0.44
1:A:458:LEU:HD23	1:A:458:LEU:HA	1.76	0.44
1:A:200:ILE:HG23	1:A:200:ILE:HD12	1.48	0.44
2:B:334:VAL:HG12	2:B:335:LEU:HD23	2.00	0.44
1:A:691:LEU:HD23	1:A:691:LEU:HA	1.84	0.44
1:A:188:MET:CB	1:A:200:ILE:HD11	2.44	0.43
2:B:346:LYS:O	2:B:349:ILE:HB	2.19	0.43
1:A:188:MET:SD	1:A:200:ILE:CD1	3.06	0.43
1:A:625:LEU:HD22	1:A:629:VAL:HG11	2.00	0.43
2:B:327:ASN:ND2	2:B:330:ALA:HB2	2.34	0.43
2:B:383:TRP:CZ2	2:B:420:PHE:HB2	2.54	0.43
1:A:340:ASN:OD1	1:A:342:MET:N	2.45	0.43
1:A:356:ILE:HD11	1:A:566:THR:HG23	2.00	0.43
1:A:363:TYR:HB3	1:A:734:ILE:HD12	2.00	0.43
1:A:507:LYS:O	1:A:507:LYS:HG3	2.17	0.43
1:A:693:LEU:HD12	1:A:694:PHE:N	2.29	0.43
2:B:324:VAL:HG12	2:B:324:VAL:O	2.19	0.43
1:A:386:LEU:HD23	1:A:386:LEU:HA	1.91	0.43
2:B:430:ILE:H	2:B:430:ILE:HD12	1.83	0.43
2:B:434:LEU:HA	2:B:434:LEU:HD23	1.83	0.42
1:A:346:SER:CB	1:A:351:MET:HE3	2.48	0.42
1:A:187:ARG:HH11	1:A:187:ARG:HG2	1.85	0.42
1:A:540:ASN:O	1:A:542:THR:HG22	2.20	0.42
1:A:384:ARG:HH22	2:B:313:GLY:HA3	1.85	0.42
1:A:438:GLN:OE1	1:A:508:LEU:HD13	2.20	0.41
1:A:609:SER:C	1:A:611:SER:H	2.21	0.41
1:A:744:LYS:HD3	1:A:744:LYS:HA	1.87	0.41
1:A:780:ILE:HB	1:A:796:LEU:HB3	2.02	0.41
1:A:627:LEU:HD22	1:A:654:MET:HE2	2.02	0.41
1:A:220:LEU:HD23	1:A:220:LEU:HA	1.90	0.41

Continued on next page...

Continued from previous page...

Atom-1	Atom-2	Interatomic distance (Å)	Clash overlap (Å)
1:A:321:ARG:NH2	1:A:569:ASN:O	2.51	0.41
1:A:566:THR:HG21	1:A:697:LEU:HD13	2.02	0.41
1:A:231:PHE:CE1	1:A:249:VAL:HG12	2.56	0.41
1:A:435:VAL:HG13	2:B:349:ILE:CD1	2.51	0.41
1:A:356:ILE:HD11	1:A:566:THR:CG2	2.52	0.41
1:A:363:TYR:CB	1:A:734:ILE:HD12	2.51	0.41
1:A:730:ILE:O	1:A:734:ILE:HG12	2.21	0.41
1:A:447:LYS:HD2	1:A:497:LEU:HD21	2.03	0.40
1:A:200:ILE:HD13	1:A:200:ILE:HA	1.92	0.40
1:A:789:ALA:HB1	1:A:790:PRO:HD2	2.01	0.40
1:A:210:PHE:CD2	1:A:210:PHE:C	2.95	0.40
1:A:216:ARG:HD2	1:A:216:ARG:HA	1.90	0.40

There are no symmetry-related clashes.

5.3 Torsion angles [i](#)

5.3.1 Protein backbone [i](#)

In the following table, the Percentiles column shows the percent Ramachandran outliers of the chain as a percentile score with respect to all X-ray entries followed by that with respect to entries of similar resolution.

The Analysed column shows the number of residues for which the backbone conformation was analysed, and the total number of residues.

Mol	Chain	Analysed	Favoured	Allowed	Outliers	Percentiles	
1	A	664/871 (76%)	634 (96%)	30 (4%)	0	100	100
2	B	131/144 (91%)	117 (89%)	14 (11%)	0	100	100
All	All	795/1015 (78%)	751 (94%)	44 (6%)	0	100	100

There are no Ramachandran outliers to report.

5.3.2 Protein sidechains [i](#)

In the following table, the Percentiles column shows the percent sidechain outliers of the chain as a percentile score with respect to all X-ray entries followed by that with respect to entries of similar resolution.

The Analysed column shows the number of residues for which the sidechain conformation was

analysed, and the total number of residues.

Mol	Chain	Analysed	Rotameric	Outliers	Percentiles	
1	A	566/715 (79%)	558 (99%)	8 (1%)	62	85
2	B	117/125 (94%)	116 (99%)	1 (1%)	75	91
All	All	683/840 (81%)	674 (99%)	9 (1%)	65	86

All (9) residues with a non-rotameric sidechain are listed below:

Mol	Chain	Res	Type
1	A	352	GLU
1	A	372	LYS
1	A	373	GLU
1	A	499	GLU
1	A	504	LEU
1	A	506	GLU
1	A	507	LYS
1	A	591	ARG
2	B	335	LEU

Sometimes sidechains can be flipped to improve hydrogen bonding and reduce clashes. All (7) such sidechains are listed below:

Mol	Chain	Res	Type
1	A	236	GLN
1	A	399	ASN
1	A	632	GLN
1	A	638	GLN
1	A	828	GLN
2	B	348	GLN
2	B	403	GLN

5.3.3 RNA ⓘ

There are no RNA molecules in this entry.

5.4 Non-standard residues in protein, DNA, RNA chains ⓘ

There are no non-standard protein/DNA/RNA residues in this entry.

5.5 Carbohydrates [i](#)

There are no oligosaccharides in this entry.

5.6 Ligand geometry [i](#)

Of 2 ligands modelled in this entry, 1 is monoatomic - leaving 1 for Mogul analysis.

In the following table, the Counts columns list the number of bonds (or angles) for which Mogul statistics could be retrieved, the number of bonds (or angles) that are observed in the model and the number of bonds (or angles) that are defined in the Chemical Component Dictionary. The Link column lists molecule types, if any, to which the group is linked. The Z score for a bond length (or angle) is the number of standard deviations the observed value is removed from the expected value. A bond length (or angle) with $|Z| > 2$ is considered an outlier worth inspection. RMSZ is the root-mean-square of all Z scores of the bond lengths (or angles).

Mol	Type	Chain	Res	Link	Bond lengths			Bond angles		
					Counts	RMSZ	# Z > 2	Counts	RMSZ	# Z > 2
3	ZSI	A	901	-	67,74,74	1.46	12 (17%)	83,115,115	1.55	12 (14%)

In the following table, the Chirals column lists the number of chiral outliers, the number of chiral centers analysed, the number of these observed in the model and the number defined in the Chemical Component Dictionary. Similar counts are reported in the Torsion and Rings columns. '-' means no outliers of that kind were identified.

Mol	Type	Chain	Res	Link	Chirals	Torsions	Rings
3	ZSI	A	901	-	-	13/40/112/112	0/7/8/8

All (12) bond length outliers are listed below:

Mol	Chain	Res	Type	Atoms	Z	Observed(Å)	Ideal(Å)
3	A	901	ZSI	C26-N4	-3.83	1.40	1.49
3	A	901	ZSI	C36-N10	-3.21	1.32	1.37
3	A	901	ZSI	C35-N9	-3.05	1.29	1.36
3	A	901	ZSI	P2-O9	-3.04	1.56	1.59
3	A	901	ZSI	O3-C20	-2.96	1.37	1.43
3	A	901	ZSI	C11-N2	-2.91	1.36	1.41
3	A	901	ZSI	P1-O9	-2.77	1.56	1.59
3	A	901	ZSI	C27-N5	-2.28	1.30	1.34
3	A	901	ZSI	C12-C13	-2.18	1.36	1.39
3	A	901	ZSI	P1-O7	-2.14	1.45	1.55
3	A	901	ZSI	P2-O11	-2.13	1.45	1.55
3	A	901	ZSI	O16-C35	-2.12	1.20	1.24

All (12) bond angle outliers are listed below:

Mol	Chain	Res	Type	Atoms	Z	Observed(°)	Ideal(°)
3	A	901	ZSI	C11-N2-C10	-5.87	110.47	123.92
3	A	901	ZSI	C37-C8-C7	5.73	124.97	116.08
3	A	901	ZSI	C8-C9-C10	-3.70	96.78	104.25
3	A	901	ZSI	C36-C37-C34	-3.64	106.94	113.40
3	A	901	ZSI	C6-C7-C8	-3.51	114.06	121.07
3	A	901	ZSI	C25-O13-C26	-3.24	106.96	109.92
3	A	901	ZSI	C4-C3-C2	-2.72	111.78	120.60
3	A	901	ZSI	C36-N10-C35	-2.68	121.38	125.42
3	A	901	ZSI	C28-C29-N6	2.55	124.20	120.31
3	A	901	ZSI	C38-C3-C2	2.35	128.17	120.40
3	A	901	ZSI	C38-C7-C8	2.35	126.86	120.63
3	A	901	ZSI	O16-C35-N9	-2.01	118.46	121.80

There are no chirality outliers.

All (13) torsion outliers are listed below:

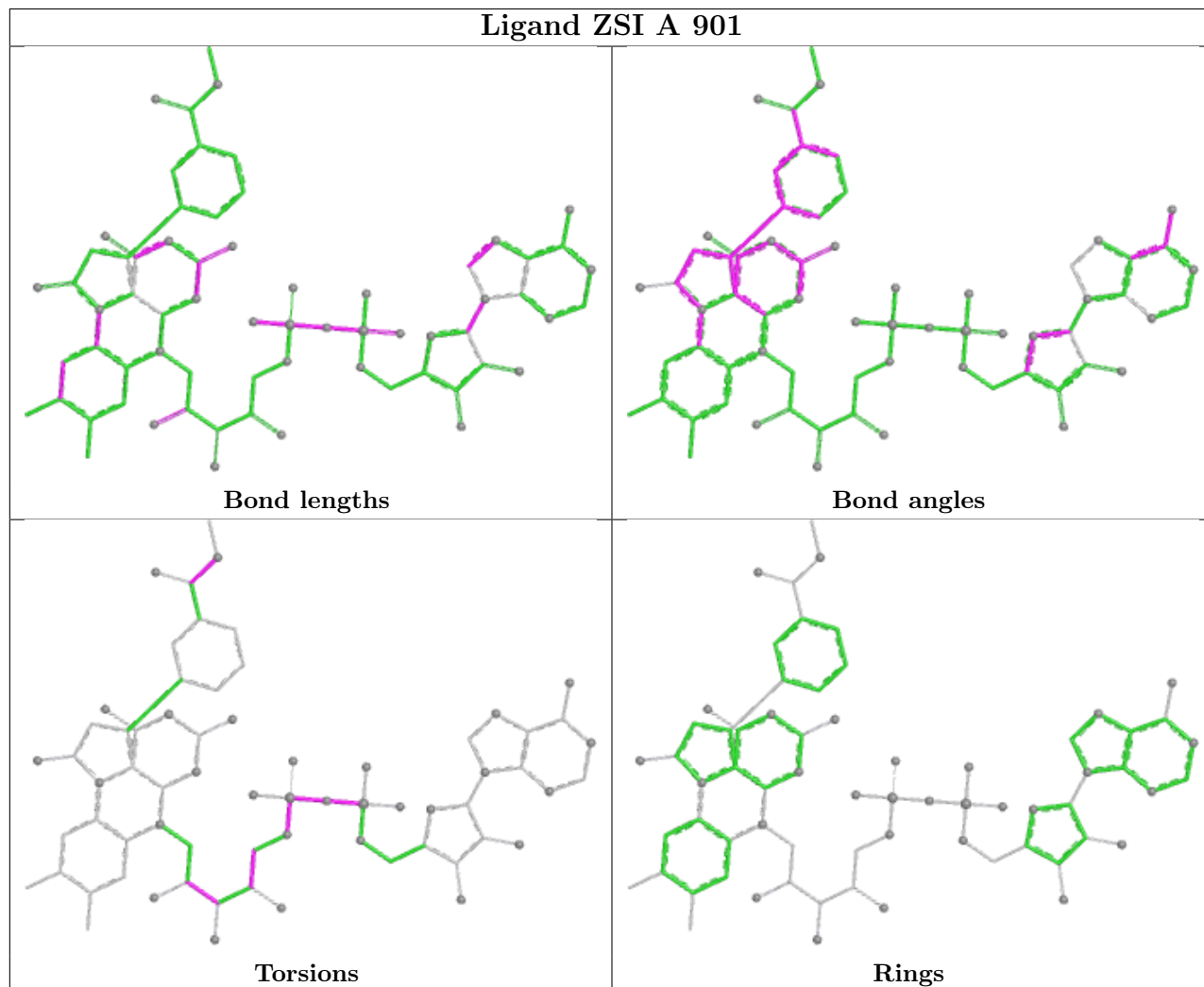
Mol	Chain	Res	Type	Atoms
3	A	901	ZSI	O5-C22-C23-O6
3	A	901	ZSI	C23-O6-P1-O8
3	A	901	ZSI	C23-O6-P1-O9
3	A	901	ZSI	P2-O9-P1-O6
3	A	901	ZSI	C21-C22-C23-O6
3	A	901	ZSI	O3-C20-C21-O4
3	A	901	ZSI	O3-C20-C21-C22
3	A	901	ZSI	C3-C2-N1-C1
3	A	901	ZSI	C23-O6-P1-O7
3	A	901	ZSI	O1-C2-N1-C1
3	A	901	ZSI	P1-O9-P2-O10
3	A	901	ZSI	P1-O9-P2-O11
3	A	901	ZSI	C19-C20-C21-O4

There are no ring outliers.

No monomer is involved in short contacts.

The following is a two-dimensional graphical depiction of Mogul quality analysis of bond lengths, bond angles, torsion angles, and ring geometry for all instances of the Ligand of Interest. In addition, ligands with molecular weight > 250 and outliers as shown on the validation Tables will also be included. For torsion angles, if less than 5% of the Mogul distribution of torsion angles is within 10 degrees of the torsion angle in question, then that torsion angle is considered an outlier. Any bond that is central to one or more torsion angles identified as an outlier by Mogul will be highlighted in the graph. For rings, the root-mean-square deviation (RMSD) between the ring

in question and similar rings identified by Mogul is calculated over all ring torsion angles. If the average RMSD is greater than 60 degrees and the minimal RMSD between the ring in question and any Mogul-identified rings is also greater than 60 degrees, then that ring is considered an outlier. The outliers are highlighted in purple. The color gray indicates Mogul did not find sufficient equivalents in the CSD to analyse the geometry.



5.7 Other polymers [\(i\)](#)

There are no such residues in this entry.

5.8 Polymer linkage issues [\(i\)](#)

There are no chain breaks in this entry.

6 Fit of model and data

6.1 Protein, DNA and RNA chains

In the following table, the column labelled ‘#RSRZ > 2’ contains the number (and percentage) of RSRZ outliers, followed by percent RSRZ outliers for the chain as percentile scores relative to all X-ray entries and entries of similar resolution. The OWAB column contains the minimum, median, 95th percentile and maximum values of the occupancy-weighted average B-factor per residue. The column labelled ‘Q < 0.9’ lists the number of (and percentage) of residues with an average occupancy less than 0.9.

Mol	Chain	Analysed	<RSRZ>	#RSRZ>2	OWAB(Å ²)	Q<0.9
1	A	666/871 (76%)	0.30	24 (3%) 46 40	54, 85, 115, 135	0
2	B	133/144 (92%)	0.98	18 (13%) 8 8	81, 112, 134, 150	0
All	All	799/1015 (78%)	0.42	42 (5%) 33 28	54, 91, 123, 150	0

All (42) RSRZ outliers are listed below:

Mol	Chain	Res	Type	RSRZ
1	A	836	LEU	7.6
1	A	171	PRO	4.4
1	A	269	ARG	4.2
1	A	272	PRO	3.8
2	B	375	VAL	3.8
1	A	556	ASP	3.7
1	A	275	THR	3.7
1	A	496	GLU	3.1
2	B	308	ARG	3.1
2	B	340	MET	2.9
2	B	440	GLU	2.9
2	B	418	LYS	2.9
2	B	381	ALA	2.8
2	B	312	LYS	2.8
2	B	376	ILE	2.8
2	B	420	PHE	2.8
1	A	833	MET	2.7
2	B	439	ALA	2.7
1	A	611	SER	2.6
1	A	172	SER	2.5
2	B	332	THR	2.4
2	B	374	GLU	2.4
1	A	519	VAL	2.4
2	B	424	TYR	2.4

Continued on next page...

Continued from previous page...

Mol	Chain	Res	Type	RSRZ
1	A	377	MET	2.3
1	A	499	GLU	2.3
1	A	787	PRO	2.3
1	A	274	PRO	2.2
2	B	318	GLN	2.2
1	A	273	LEU	2.2
2	B	426	ARG	2.2
1	A	436	LYS	2.2
1	A	508	LEU	2.1
1	A	373	GLU	2.1
1	A	443	GLU	2.1
1	A	786	ILE	2.1
2	B	337	GLN	2.1
1	A	512	GLU	2.1
1	A	835	THR	2.1
2	B	414	VAL	2.1
2	B	382	ARG	2.1
1	A	744	LYS	2.0

6.2 Non-standard residues in protein, DNA, RNA chains [i](#)

There are no non-standard protein/DNA/RNA residues in this entry.

6.3 Carbohydrates [i](#)

There are no monosaccharides in this entry.

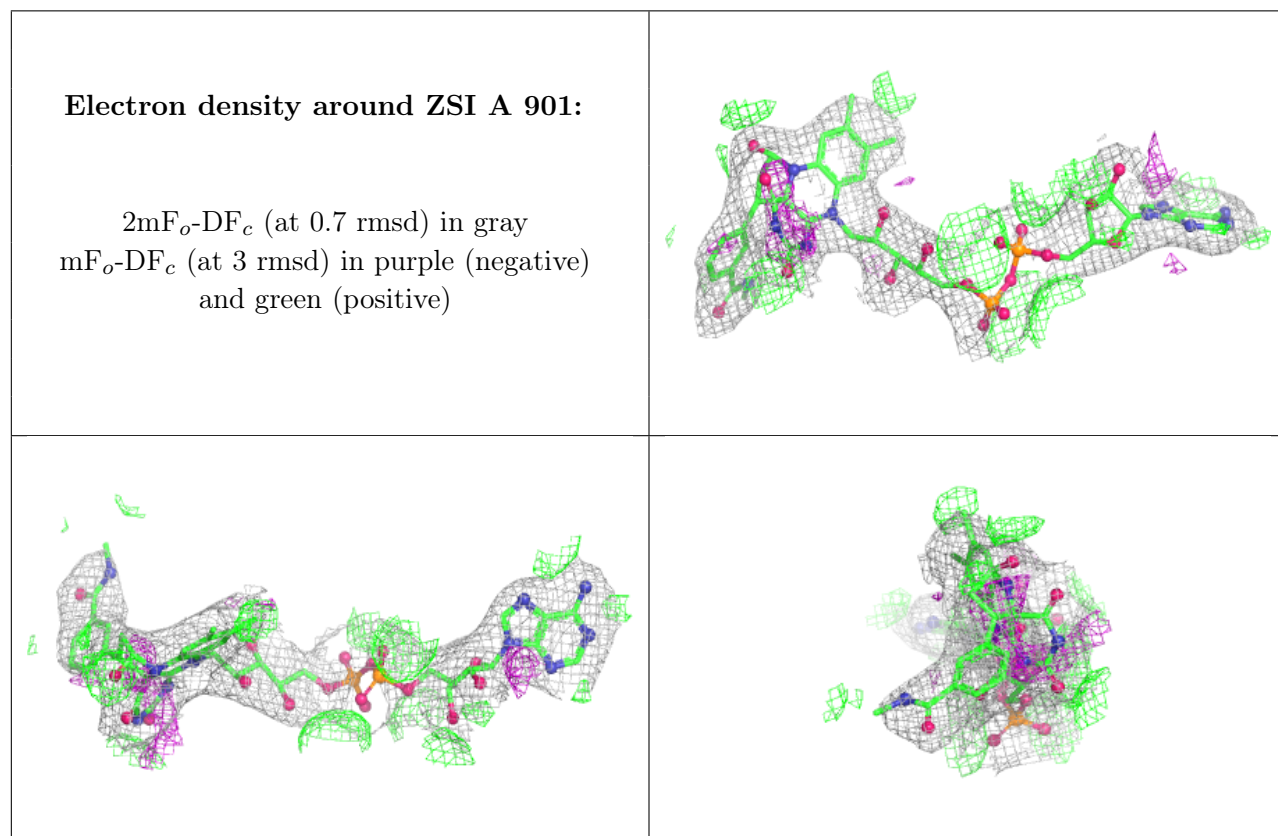
6.4 Ligands [i](#)

In the following table, the Atoms column lists the number of modelled atoms in the group and the number defined in the chemical component dictionary. The B-factors column lists the minimum, median, 95th percentile and maximum values of B factors of atoms in the group. The column labelled 'Q< 0.9' lists the number of atoms with occupancy less than 0.9.

Mol	Type	Chain	Res	Atoms	RSCC	RSR	B-factors(Å ²)	Q<0.9
4	K	A	902	1/1	0.54	0.27	145,145,145,145	0
3	ZSI	A	901	67/67	0.96	0.10	46,69,84,91	0

The following is a graphical depiction of the model fit to experimental electron density of all instances of the Ligand of Interest. In addition, ligands with molecular weight > 250 and outliers

as shown on the geometry validation Tables will also be included. Each fit is shown from different orientation to approximate a three-dimensional view.



6.5 Other polymers [i](#)

There are no such residues in this entry.