



Full wwPDB X-ray Structure Validation Report ⓘ

Oct 14, 2023 – 10:12 PM EDT

PDB ID : 8E4Z
Title : Co-crystal structure of Chaetomium glucosidase with compound 8
Authors : Karade, S.S.; Mariuzza, R.A.
Deposited on : 2022-08-19
Resolution : 2.37 Å(reported)

This is a Full wwPDB X-ray Structure Validation Report for a publicly released PDB entry.

We welcome your comments at validation@mail.wwpdb.org

A user guide is available at

<https://www.wwpdb.org/validation/2017/XrayValidationReportHelp>

with specific help available everywhere you see the ⓘ symbol.

The types of validation reports are described at

<http://www.wwpdb.org/validation/2017/FAQs#types>.

The following versions of software and data (see [references ⓘ](#)) were used in the production of this report:

MolProbity : 4.02b-467
Mogul : 1.8.5 (274361), CSD as541be (2020)
Xtriage (Phenix) : 1.13
EDS : 2.36
buster-report : 1.1.7 (2018)
Percentile statistics : 20191225.v01 (using entries in the PDB archive December 25th 2019)
Refmac : 5.8.0158
CCP4 : 7.0.044 (Gargrove)
Ideal geometry (proteins) : Engh & Huber (2001)
Ideal geometry (DNA, RNA) : Parkinson et al. (1996)
Validation Pipeline (wwPDB-VP) : 2.36

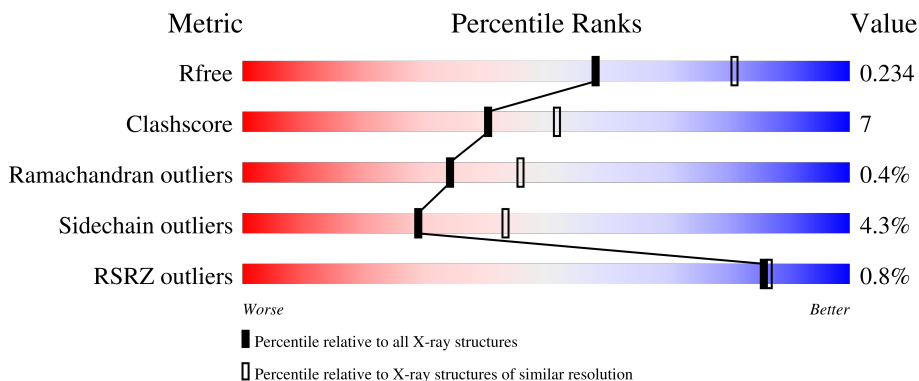
1 Overall quality at a glance

The following experimental techniques were used to determine the structure:

X-RAY DIFFRACTION



The reported resolution of this entry is 2.37 Å.

Percentile scores (ranging between 0-100) for global validation metrics of the entry are shown in the following graphic. The table shows the number of entries on which the scores are based.



Metric	Whole archive (#Entries)	Similar resolution (#Entries, resolution range(Å))
R_{free}	130704	5509 (2.40-2.36)
Clashscore	141614	6082 (2.40-2.36)
Ramachandran outliers	138981	5973 (2.40-2.36)
Sidechain outliers	138945	5975 (2.40-2.36)
RSRZ outliers	127900	5397 (2.40-2.36)

The table below summarises the geometric issues observed across the polymeric chains and their fit to the electron density. The red, orange, yellow and green segments of the lower bar indicate the fraction of residues that contain outliers for ≥ 3 , 2, 1 and 0 types of geometric quality criteria respectively. A grey segment represents the fraction of residues that are not modelled. The numeric value for each fraction is indicated below the corresponding segment, with a dot representing fractions $\leq 5\%$. The upper red bar (where present) indicates the fraction of residues that have poor fit to the electron density. The numeric value is given above the bar.

Mol	Chain	Length	Quality of chain
1	A	819	 80% 12% • 7%
1	B	819	 77% 15% • 6%

2 Entry composition i

There are 7 unique types of molecules in this entry. The entry contains 12552 atoms, of which 0 are hydrogens and 0 are deuteriums.

In the tables below, the ZeroOcc column contains the number of atoms modelled with zero occupancy, the AltConf column contains the number of residues with at least one atom in alternate conformation and the Trace column contains the number of residues modelled with at most 2 atoms.

- Molecule 1 is a protein called Chaetomium alpha glucosidase.

Mol	Chain	Residues	Atoms					ZeroOcc	AltConf	Trace
			Total	C	N	O	S			
1	A	765	6032	3870	1021	1128	13	0	4	0
1	B	767	6027	3866	1018	1130	13	0	1	0

There are 78 discrepancies between the modelled and reference sequences:

Chain	Residue	Modelled	Actual	Comment	Reference
A	-1	MET	-	initiating methionine	UNP G0SFD1
A	0	GLY	-	expression tag	UNP G0SFD1
A	1	ILE	-	expression tag	UNP G0SFD1
A	2	LEU	-	expression tag	UNP G0SFD1
A	3	PRO	-	expression tag	UNP G0SFD1
A	4	SER	-	expression tag	UNP G0SFD1
A	5	PRO	-	expression tag	UNP G0SFD1
A	6	GLY	-	expression tag	UNP G0SFD1
A	7	MET	-	expression tag	UNP G0SFD1
A	8	PRO	-	expression tag	UNP G0SFD1
A	9	ALA	-	expression tag	UNP G0SFD1
A	10	LEU	-	expression tag	UNP G0SFD1
A	11	LEU	-	expression tag	UNP G0SFD1
A	12	SER	-	expression tag	UNP G0SFD1
A	13	LEU	-	expression tag	UNP G0SFD1
A	14	VAL	-	expression tag	UNP G0SFD1
A	15	SER	-	expression tag	UNP G0SFD1
A	16	LEU	-	expression tag	UNP G0SFD1
A	17	LEU	-	expression tag	UNP G0SFD1
A	18	SER	-	expression tag	UNP G0SFD1
A	19	VAL	-	expression tag	UNP G0SFD1
A	20	LEU	-	expression tag	UNP G0SFD1
A	21	LEU	-	expression tag	UNP G0SFD1
A	22	MET	-	expression tag	UNP G0SFD1
A	23	GLY	-	expression tag	UNP G0SFD1

Continued on next page...

Continued from previous page...

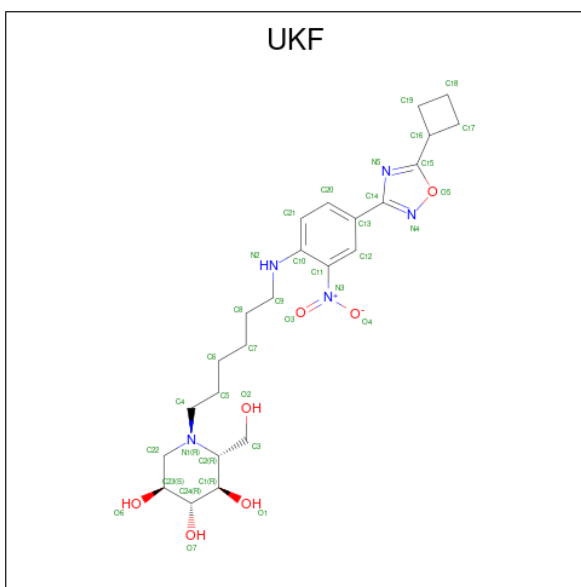
Chain	Residue	Modelled	Actual	Comment	Reference
A	24	CYS	-	expression tag	UNP G0SFD1
A	25	VAL	-	expression tag	UNP G0SFD1
A	26	ALA	-	expression tag	UNP G0SFD1
A	27	GLU	-	expression tag	UNP G0SFD1
A	28	THR	-	expression tag	UNP G0SFD1
A	29	GLY	-	expression tag	UNP G0SFD1
A	810	SER	-	expression tag	UNP G0SFD1
A	811	GLY	-	expression tag	UNP G0SFD1
A	812	HIS	-	expression tag	UNP G0SFD1
A	813	HIS	-	expression tag	UNP G0SFD1
A	814	HIS	-	expression tag	UNP G0SFD1
A	815	HIS	-	expression tag	UNP G0SFD1
A	816	HIS	-	expression tag	UNP G0SFD1
A	817	HIS	-	expression tag	UNP G0SFD1
B	-1	MET	-	initiating methionine	UNP G0SFD1
B	0	GLY	-	expression tag	UNP G0SFD1
B	1	ILE	-	expression tag	UNP G0SFD1
B	2	LEU	-	expression tag	UNP G0SFD1
B	3	PRO	-	expression tag	UNP G0SFD1
B	4	SER	-	expression tag	UNP G0SFD1
B	5	PRO	-	expression tag	UNP G0SFD1
B	6	GLY	-	expression tag	UNP G0SFD1
B	7	MET	-	expression tag	UNP G0SFD1
B	8	PRO	-	expression tag	UNP G0SFD1
B	9	ALA	-	expression tag	UNP G0SFD1
B	10	LEU	-	expression tag	UNP G0SFD1
B	11	LEU	-	expression tag	UNP G0SFD1
B	12	SER	-	expression tag	UNP G0SFD1
B	13	LEU	-	expression tag	UNP G0SFD1
B	14	VAL	-	expression tag	UNP G0SFD1
B	15	SER	-	expression tag	UNP G0SFD1
B	16	LEU	-	expression tag	UNP G0SFD1
B	17	LEU	-	expression tag	UNP G0SFD1
B	18	SER	-	expression tag	UNP G0SFD1
B	19	VAL	-	expression tag	UNP G0SFD1
B	20	LEU	-	expression tag	UNP G0SFD1
B	21	LEU	-	expression tag	UNP G0SFD1
B	22	MET	-	expression tag	UNP G0SFD1
B	23	GLY	-	expression tag	UNP G0SFD1
B	24	CYS	-	expression tag	UNP G0SFD1
B	25	VAL	-	expression tag	UNP G0SFD1
B	26	ALA	-	expression tag	UNP G0SFD1

Continued on next page...

Continued from previous page...

Chain	Residue	Modelled	Actual	Comment	Reference
B	27	GLU	-	expression tag	UNP G0SFD1
B	28	THR	-	expression tag	UNP G0SFD1
B	29	GLY	-	expression tag	UNP G0SFD1
B	810	SER	-	expression tag	UNP G0SFD1
B	811	GLY	-	expression tag	UNP G0SFD1
B	812	HIS	-	expression tag	UNP G0SFD1
B	813	HIS	-	expression tag	UNP G0SFD1
B	814	HIS	-	expression tag	UNP G0SFD1
B	815	HIS	-	expression tag	UNP G0SFD1
B	816	HIS	-	expression tag	UNP G0SFD1
B	817	HIS	-	expression tag	UNP G0SFD1

- Molecule 2 is (2R,3R,4R,5S)-1-(6-{{[(4P)-4-(5-cyclobutyl-1,2,4-oxadiazol-3-yl)-2-nitrophenyl]amino}hexyl)-2-(hydroxymethyl)piperidine-3,4,5-triol (three-letter code: UKF) (formula: C₂₄H₃₅N₅O₇) (labeled as "Ligand of Interest" by depositor).



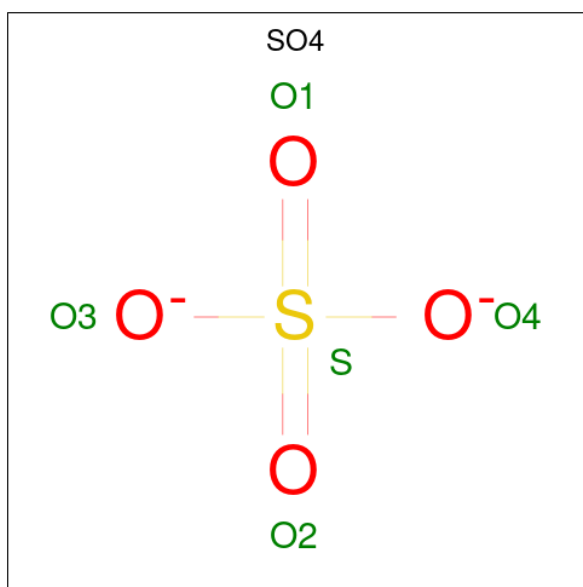
Mol	Chain	Residues	Atoms			ZeroOcc	AltConf	
			Total	C	N			O
2	A	1	Total	C	N	O	0	0
			36	24	5	7		
2	B	1	Total	C	N	O	0	0
			36	24	5	7		

- Molecule 3 is GLYCEROL (three-letter code: GOL) (formula: C₃H₈O₃).



Mol	Chain	Residues	Atoms			ZeroOcc	AltConf
3	A	1	Total	C	O	0	0
			6	3	3		
3	A	1	Total	C	O	0	0
			6	3	3		
3	B	1	Total	C	O	0	0
			6	3	3		

- Molecule 4 is SULFATE ION (three-letter code: SO4) (formula: O₄S).



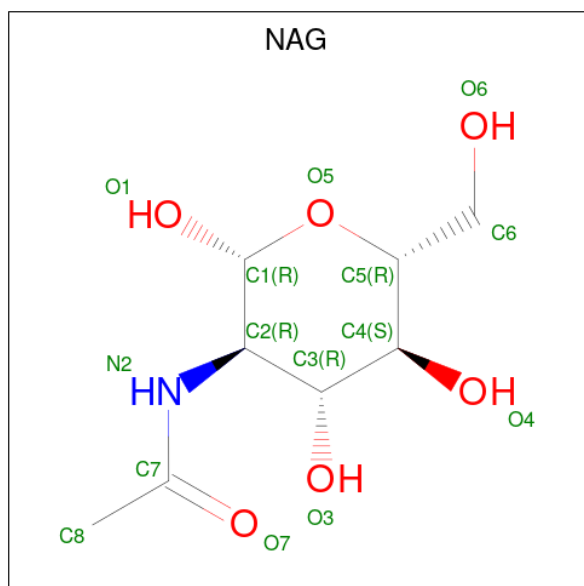
Mol	Chain	Residues	Atoms			ZeroOcc	AltConf
4	A	1	Total	O	S	0	0
			5	4	1		

Continued on next page...

Continued from previous page...

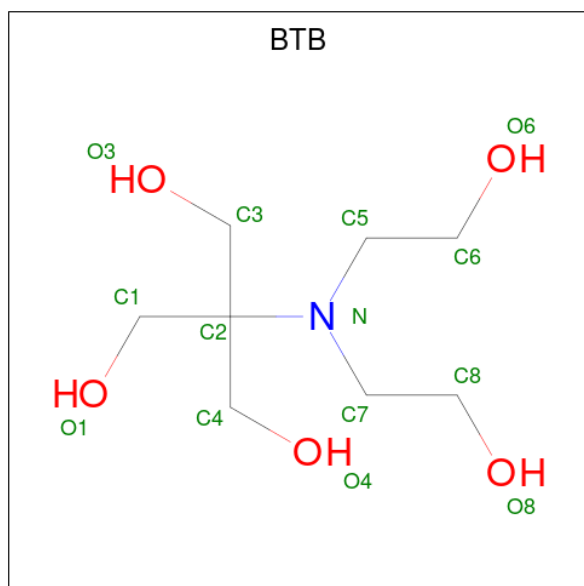
Mol	Chain	Residues	Atoms			ZeroOcc	AltConf
4	A	1	Total	O	S	0	0
			5	4	1		
4	A	1	Total	O	S	0	0
			5	4	1		
4	A	1	Total	O	S	0	0
			5	4	1		
4	A	1	Total	O	S	0	0
			5	4	1		
4	A	1	Total	O	S	0	0
			5	4	1		
4	A	1	Total	O	S	0	0
			5	4	1		
4	B	1	Total	O	S	0	0
			5	4	1		
4	B	1	Total	O	S	0	0
			5	4	1		
4	B	1	Total	O	S	0	0
			5	4	1		
4	B	1	Total	O	S	0	0
			5	4	1		

- Molecule 5 is 2-acetamido-2-deoxy-beta-D-glucopyranose (three-letter code: NAG) (formula: $C_8H_{15}NO_6$).



Mol	Chain	Residues	Atoms				ZeroOcc	AltConf
			Total	C	N	O		
5	B	1	14	8	1	5	0	0

- Molecule 6 is 2-[BIS-(2-HYDROXY-ETHYL)-AMINO]-2-HYDROXYMETHYL-PROPAN E-1,3-DIOL (three-letter code: BTB) (formula: C₈H₁₉NO₅).



Mol	Chain	Residues	Atoms				ZeroOcc	AltConf
			Total	C	N	O		
6	B	1	14	8	1	5	0	0

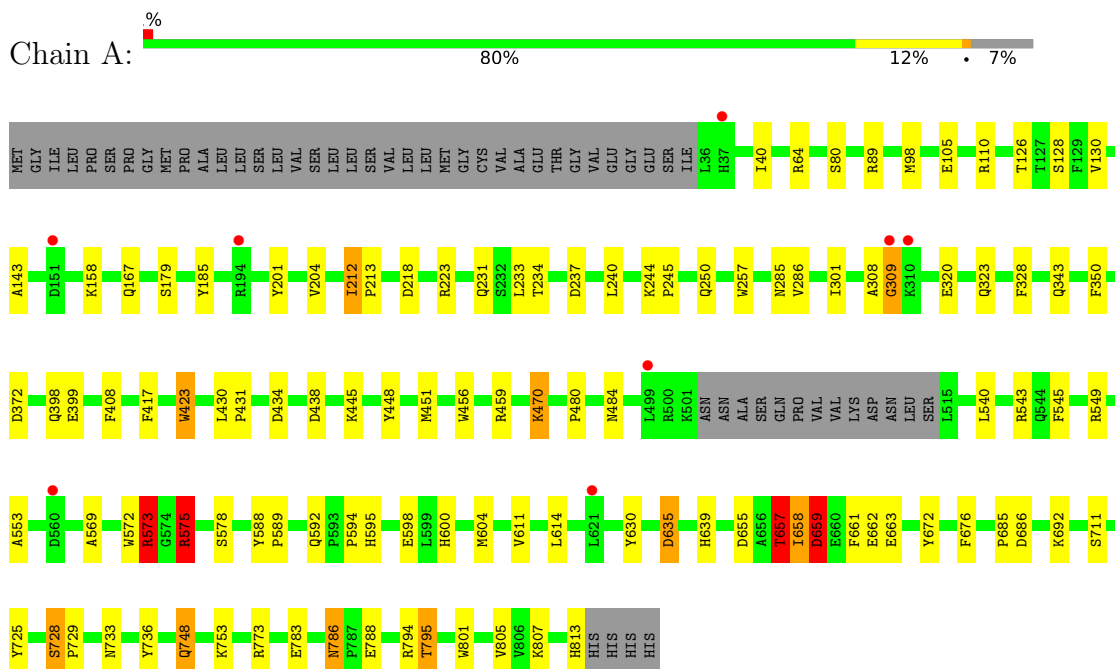
- Molecule 7 is water.

Mol	Chain	Residues	Atoms		ZeroOcc	AltConf
			Total	O		
7	A	149	149	149	0	0
7	B	166	166	166	0	0

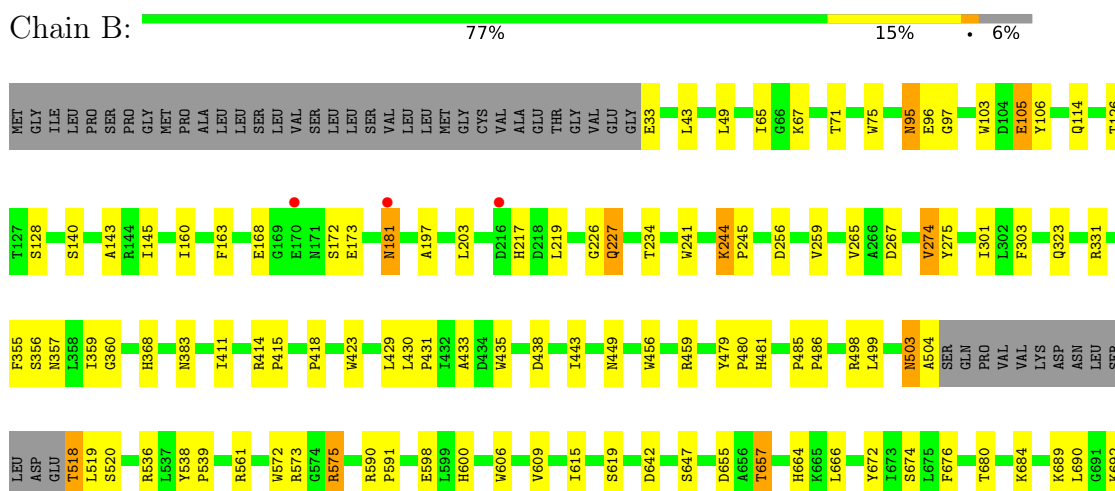
3 Residue-property plots [i](#)

These plots are drawn for all protein, RNA, DNA and oligosaccharide chains in the entry. The first graphic for a chain summarises the proportions of the various outlier classes displayed in the second graphic. The second graphic shows the sequence view annotated by issues in geometry and electron density. Residues are color-coded according to the number of geometric quality criteria for which they contain at least one outlier: green = 0, yellow = 1, orange = 2 and red = 3 or more. A red dot above a residue indicates a poor fit to the electron density ($RSRZ > 2$). Stretches of 2 or more consecutive residues without any outlier are shown as a green connector. Residues present in the sample, but not in the model, are shown in grey.

- Molecule 1: Chaetomium alpha glucosidase



- Molecule 1: Chaetomium alpha glucosidase





4 Data and refinement statistics

Property	Value	Source
Space group	I 2 2 2	Depositor
Cell constants a, b, c, α , β , γ	135.37Å 178.35Å 179.41Å 90.00° 90.00° 90.00°	Depositor
Resolution (Å)	46.67 – 2.37 46.63 – 2.37	Depositor EDS
% Data completeness (in resolution range)	99.0 (46.67-2.37) 99.0 (46.63-2.37)	Depositor EDS
R_{merge}	0.10	Depositor
R_{sym}	(Not available)	Depositor
$\langle I/\sigma(I) \rangle$ ¹	1.91 (at 2.37Å)	Xtrriage
Refinement program	REFMAC 5.8.0258	Depositor
R, R_{free}	0.180 , 0.234 0.180 , 0.234	Depositor DCC
R_{free} test set	4273 reflections (4.92%)	wwPDB-VP
Wilson B-factor (Å ²)	44.0	Xtrriage
Anisotropy	0.496	Xtrriage
Bulk solvent k_{sol} (e/Å ³), B_{sol} (Å ²)	0.34 , 29.5	EDS
L-test for twinning ²	$\langle L \rangle = 0.49$, $\langle L^2 \rangle = 0.32$	Xtrriage
Estimated twinning fraction	0.009 for -h,-l,-k	Xtrriage
F_o, F_c correlation	0.96	EDS
Total number of atoms	12552	wwPDB-VP
Average B, all atoms (Å ²)	45.0	wwPDB-VP

Xtrriage's analysis on translational NCS is as follows: *The largest off-origin peak in the Patterson function is 2.85% of the height of the origin peak. No significant pseudotranslation is detected.*

¹Intensities estimated from amplitudes.

²Theoretical values of $\langle |L| \rangle$, $\langle L^2 \rangle$ for acentric reflections are 0.5, 0.333 respectively for untwinned datasets, and 0.375, 0.2 for perfectly twinned datasets.

5 Model quality i

5.1 Standard geometry i

Bond lengths and bond angles in the following residue types are not validated in this section: BTB, UKF, GOL, NAG, SO4

The Z score for a bond length (or angle) is the number of standard deviations the observed value is removed from the expected value. A bond length (or angle) with $|Z| > 5$ is considered an outlier worth inspection. RMSZ is the root-mean-square of all Z scores of the bond lengths (or angles).

Mol	Chain	Bond lengths		Bond angles	
		RMSZ	# Z >5	RMSZ	# Z >5
1	A	0.49	0/6216	0.87	11/8473 (0.1%)
1	B	0.50	0/6203	0.90	10/8459 (0.1%)
All	All	0.49	0/12419	0.88	21/16932 (0.1%)

There are no bond length outliers.

All (21) bond angle outliers are listed below:

Mol	Chain	Res	Type	Atoms	Z	Observed(°)	Ideal(°)
1	B	575	ARG	CG-CD-NE	-9.93	90.96	111.80
1	A	659	ASP	CB-CA-C	-9.45	91.51	110.40
1	B	459	ARG	NE-CZ-NH2	-8.71	115.94	120.30
1	A	575	ARG	CB-CA-C	8.59	127.57	110.40
1	A	794	ARG	CG-CD-NE	-8.26	94.45	111.80
1	A	459	ARG	NE-CZ-NH2	-7.95	116.33	120.30
1	A	575	ARG	CG-CD-NE	-7.67	95.70	111.80
1	B	459	ARG	NE-CZ-NH1	7.23	123.91	120.30
1	A	794	ARG	NE-CZ-NH1	-7.22	116.69	120.30
1	B	575	ARG	CB-CA-C	7.11	124.62	110.40
1	A	459	ARG	CG-CD-NE	-7.05	96.98	111.80
1	A	573	ARG	CG-CD-NE	-6.67	97.80	111.80
1	B	459	ARG	CG-CD-NE	-6.53	98.10	111.80
1	A	448	TYR	CB-CA-C	6.19	122.77	110.40
1	B	684	LYS	CB-CA-C	5.94	122.29	110.40
1	A	657	THR	CB-CA-C	-5.69	96.23	111.60
1	B	573	ARG	NE-CZ-NH2	-5.52	117.54	120.30
1	B	459	ARG	CD-NE-CZ	5.52	131.33	123.60
1	B	573	ARG	CG-CD-NE	-5.24	100.79	111.80
1	A	748	GLN	CB-CA-C	-5.22	99.96	110.40
1	B	657	THR	CB-CA-C	-5.04	98.00	111.60

There are no chirality outliers.

There are no planarity outliers.

5.2 Too-close contacts [i](#)

In the following table, the Non-H and H(model) columns list the number of non-hydrogen atoms and hydrogen atoms in the chain respectively. The H(added) column lists the number of hydrogen atoms added and optimized by MolProbity. The Clashes column lists the number of clashes within the asymmetric unit, whereas Symm-Clashes lists symmetry-related clashes.

Mol	Chain	Non-H	H(model)	H(added)	Clashes	Symm-Clashes
1	A	6032	0	5638	80	0
1	B	6027	0	5608	89	0
2	A	36	0	0	0	0
2	B	36	0	0	0	0
3	A	12	0	16	2	0
3	B	6	0	8	0	0
4	A	40	0	0	2	0
4	B	20	0	0	2	0
5	B	14	0	13	0	0
6	B	14	0	19	3	0
7	A	149	0	0	11	0
7	B	166	0	0	0	0
All	All	12552	0	11302	169	0

The all-atom clashscore is defined as the number of clashes found per 1000 atoms (including hydrogen atoms). The all-atom clashscore for this structure is 7.

All (169) close contacts within the same asymmetric unit are listed below, sorted by their clash magnitude.

Atom-1	Atom-2	Interatomic distance (Å)	Clash overlap (Å)
1:A:795:THR:HG23	7:A:1001:HOH:O	1.52	1.07
1:A:40:ILE:CB	7:A:1079:HOH:O	1.99	1.07
1:A:451:MET:HE1	1:A:540:LEU:HB3	1.38	1.05
1:A:657:THR:HG21	7:A:1088:HOH:O	1.65	0.96
1:B:572:TRP:H	1:B:600:HIS:HD2	1.12	0.94
1:A:795:THR:CG2	7:A:1001:HOH:O	2.14	0.91
1:B:786:ASN:HD22	1:B:789:THR:H	1.15	0.90
1:A:451:MET:CE	1:A:540:LEU:HB3	2.05	0.86
1:A:658:ILE:HD13	1:A:662:GLU:HA	1.59	0.85
1:A:659:ASP:HB3	1:A:661:PHE:H	1.43	0.82
1:A:40:ILE:CA	7:A:1079:HOH:O	2.27	0.81

Continued on next page...

Continued from previous page...

Atom-1	Atom-2	Interatomic distance (Å)	Clash overlap (Å)
1:B:561:ARG:HE	1:B:664:HIS:HD2	1.28	0.80
1:A:434:ASP:OD2	1:A:807:LYS:HD3	1.81	0.80
1:B:572:TRP:H	1:B:600:HIS:CD2	2.00	0.79
1:B:217:HIS:HD2	1:B:219:LEU:H	1.34	0.75
1:B:561:ARG:HE	1:B:664:HIS:CD2	2.06	0.73
1:A:470:LYS:HE2	7:A:1136:HOH:O	1.87	0.73
6:B:903:BTB:H52	6:B:903:BTB:O8	1.91	0.71
1:B:114:GLN:NE2	1:B:414:ARG:HH12	1.88	0.71
1:A:231:GLN:NE2	1:A:250:GLN:HE21	1.89	0.69
1:A:685:PRO:HG3	1:A:748:GLN:HE22	1.58	0.69
1:B:786:ASN:ND2	1:B:789:THR:H	1.89	0.69
1:B:128:SER:O	1:B:143:ALA:HA	1.94	0.68
1:A:231:GLN:HE22	1:A:250:GLN:HE21	1.40	0.68
1:A:451:MET:HE1	1:A:540:LEU:CB	2.20	0.68
1:A:308:ALA:O	1:A:309:GLY:O	2.12	0.67
1:A:578:SER:N	4:A:910:SO4:O1	2.26	0.67
1:A:572:TRP:H	1:A:600:HIS:HD2	1.41	0.67
1:A:233:LEU:HD22	1:B:265:VAL:HG23	1.77	0.66
1:A:40:ILE:HA	7:A:1079:HOH:O	1.94	0.66
1:A:783:GLU:OE1	1:A:795:THR:HB	1.93	0.66
1:A:545:PHE:CZ	1:A:549:ARG:HD2	2.31	0.66
1:B:766:ASN:O	1:B:770:THR:HG23	1.96	0.65
1:A:598:GLU:OE2	1:A:600:HIS:HE1	1.79	0.65
1:B:103:TRP:H	1:B:357:ASN:ND2	1.95	0.63
1:B:803:SER:O	1:B:806:VAL:HG23	1.99	0.63
1:B:217:HIS:HE1	1:B:267:ASP:O	1.81	0.63
1:A:553:ALA:O	1:A:573:ARG:NH2	2.31	0.63
1:A:575:ARG:HH22	1:A:592:GLN:HE22	1.46	0.61
1:B:786:ASN:HB2	1:B:793:GLN:NE2	2.15	0.61
1:A:456:TRP:CE2	1:A:480:PRO:HA	2.36	0.60
1:B:728:SER:N	1:B:729:PRO:HD3	2.17	0.60
1:A:110:ARG:HH21	1:A:323:GLN:HG3	1.68	0.59
1:A:470:LYS:CE	7:A:1136:HOH:O	2.47	0.59
1:A:110:ARG:NH2	1:A:323:GLN:HG3	2.18	0.59
1:B:518:THR:HG23	1:B:520:SER:HB2	1.85	0.59
1:A:658:ILE:HD12	1:A:659:ASP:O	2.02	0.58
1:B:762:ARG:NH2	4:B:907:SO4:O1	2.34	0.58
1:A:659:ASP:HB3	1:A:661:PHE:N	2.15	0.58
1:A:659:ASP:HB2	1:A:663:GLU:H	1.68	0.58
1:A:604:MET:HE3	7:A:1090:HOH:O	2.03	0.58
1:A:212:ILE:HD12	1:A:213:PRO:HD2	1.85	0.58

Continued on next page...

Continued from previous page...

Atom-1	Atom-2	Interatomic distance (Å)	Clash overlap (Å)
1:A:423:TRP:H	1:A:484:ASN:ND2	2.02	0.58
1:B:145:ILE:HD13	1:B:301:ILE:CD1	2.34	0.57
1:A:635:ASP:O	1:A:639:HIS:HD2	1.89	0.56
1:A:672:TYR:CZ	1:A:711:SER:HA	2.41	0.56
1:A:736:TYR:OH	1:A:807:LYS:HE3	2.06	0.56
1:A:595:HIS:CE1	1:A:658:ILE:HG13	2.41	0.55
1:B:728:SER:N	1:B:729:PRO:CD	2.70	0.55
1:B:103:TRP:H	1:B:357:ASN:HD21	1.55	0.55
1:B:368:HIS:HD2	4:B:905:SO4:O3	1.90	0.55
1:A:786:ASN:ND2	1:A:788:GLU:H	2.04	0.55
1:B:485:PRO:HB3	1:B:606:TRP:CE2	2.42	0.54
1:A:423:TRP:H	1:A:484:ASN:HD22	1.54	0.54
1:B:503:ASN:O	1:B:504:ALA:HB2	2.06	0.54
1:A:658:ILE:CD1	1:A:662:GLU:HA	2.33	0.54
1:B:106:TYR:HD2	1:B:359:ILE:HG23	1.73	0.53
1:B:728:SER:H	1:B:729:PRO:CD	2.21	0.53
1:B:766:ASN:O	1:B:770:THR:CG2	2.56	0.53
1:B:561:ARG:NE	1:B:664:HIS:HD2	2.04	0.53
1:A:244:LYS:HB3	1:A:245:PRO:HD3	1.91	0.52
6:B:903:BTB:O3	6:B:903:BTB:H51	2.10	0.52
1:A:128:SER:O	1:A:143:ALA:HA	2.10	0.52
1:B:140:SER:HB3	1:B:303:PHE:O	2.10	0.51
1:B:226:GLY:H	1:B:227:GLN:HE22	1.57	0.51
1:A:543:ARG:HE	3:A:902:GOL:H11	1.74	0.51
1:B:414:ARG:N	1:B:415:PRO:HD2	2.26	0.51
1:B:503:ASN:O	1:B:504:ALA:CB	2.59	0.51
1:B:647:SER:HB2	1:B:666:LEU:HD13	1.93	0.51
1:B:226:GLY:H	1:B:227:GLN:NE2	2.08	0.51
1:A:728:SER:N	1:A:729:PRO:CD	2.73	0.51
1:A:80:SER:HB2	7:A:1050:HOH:O	2.10	0.51
1:B:615:ILE:O	1:B:619:SER:HB2	2.11	0.51
1:B:600:HIS:HA	1:B:655:ASP:OD1	2.11	0.51
1:B:456:TRP:CE2	1:B:480:PRO:HA	2.47	0.50
1:B:796:GLN:O	1:B:797:HIS:HB2	2.12	0.50
1:B:783:GLU:OE1	1:B:795:THR:HB	2.10	0.50
1:B:33:GLU:HB2	1:B:536:ARG:HH12	1.76	0.50
1:B:782:TRP:CG	1:B:792:GLY:HA3	2.47	0.49
1:B:181:ASN:HD22	1:B:181:ASN:N	2.11	0.49
1:A:130:VAL:HG21	1:A:320:GLU:HB3	1.95	0.48
1:B:672:TYR:CE1	1:B:711:SER:HA	2.49	0.48
1:A:126:THR:HG22	7:A:1114:HOH:O	2.14	0.48

Continued on next page...

Continued from previous page...

Atom-1	Atom-2	Interatomic distance (Å)	Clash overlap (Å)
1:B:95:ASN:HD22	1:B:97:GLY:H	1.63	0.47
1:B:411:ILE:HD12	1:B:418:PRO:HA	1.96	0.47
1:B:672:TYR:CG	1:B:734:ILE:HG21	2.50	0.47
1:A:543:ARG:HB2	3:A:902:GOL:H31	1.97	0.47
1:B:591:PRO:HD2	1:B:598:GLU:OE2	2.15	0.47
1:B:217:HIS:CD2	1:B:219:LEU:H	2.24	0.47
1:B:642:ASP:CG	1:B:689:LYS:HE2	2.35	0.46
1:B:786:ASN:HD21	1:B:788:GLU:HB2	1.81	0.46
1:A:223[B]:ARG:NH2	1:A:257:TRP:CE2	2.84	0.46
1:A:350:PHE:CZ	1:A:805[B]:VAL:HG11	2.50	0.46
1:A:545:PHE:CE2	1:A:549:ARG:CD	2.98	0.46
1:A:569:ALA:HA	1:A:604:MET:CE	2.45	0.46
1:A:614:LEU:HB3	1:A:630:TYR:CE2	2.51	0.46
1:B:67:LYS:HG2	1:B:168:GLU:CD	2.35	0.46
1:B:331:ARG:NH1	1:B:435:TRP:O	2.48	0.45
1:B:65:ILE:HD13	1:B:197:ALA:HB1	1.98	0.45
1:A:430:LEU:HB2	1:A:431:PRO:HD3	1.97	0.45
1:B:106:TYR:CD2	1:B:360:GLY:HA2	2.51	0.45
1:B:429:LEU:HD11	1:B:443:ILE:HG22	1.99	0.45
1:A:575:ARG:HH22	1:A:592:GLN:NE2	2.14	0.45
1:A:594:PRO:HA	1:A:598:GLU:OE1	2.16	0.45
1:A:733:ASN:HB3	1:A:801:TRP:CG	2.52	0.45
1:B:244:LYS:HB3	1:B:245:PRO:HD3	1.99	0.45
1:A:672:TYR:CE1	1:A:711:SER:HA	2.52	0.45
1:B:71:THR:HB	1:B:163:PHE:CZ	2.52	0.45
1:A:658:ILE:HD12	1:A:658:ILE:C	2.37	0.44
1:A:545:PHE:CE2	1:A:549:ARG:HD2	2.53	0.44
1:B:33:GLU:CB	1:B:536:ARG:HH12	2.31	0.44
1:B:106:TYR:CE2	1:B:360:GLY:HA2	2.52	0.44
1:A:105:GLU:HG2	1:A:328:PHE:CD2	2.52	0.44
1:A:130:VAL:HG21	1:A:320:GLU:CB	2.46	0.44
1:B:690:LEU:O	1:B:694:LEU:HG	2.18	0.44
1:B:707:TYR:HA	1:B:770:THR:HG21	2.00	0.44
1:A:89:ARG:NH2	1:A:98:MET:HE2	2.31	0.44
1:A:240:LEU:HD22	1:A:286:VAL:CG2	2.47	0.44
1:A:167:GLN:O	1:A:285:ASN:HB2	2.18	0.43
1:B:145:ILE:CD1	1:B:301:ILE:CD1	2.95	0.43
1:B:114:GLN:HE22	1:B:414:ARG:HH22	1.65	0.43
1:B:590:ARG:HB3	1:B:591:PRO:CD	2.48	0.43
1:B:727:ARG:O	1:B:728:SER:HB3	2.18	0.43
1:A:451:MET:HE3	1:A:540:LEU:HD22	1.99	0.43

Continued on next page...

Continued from previous page...

Atom-1	Atom-2	Interatomic distance (Å)	Clash overlap (Å)
1:A:89:ARG:CZ	1:A:98:MET:CE	2.96	0.43
1:A:813:HIS:HA	4:A:909:SO4:O2	2.18	0.43
1:B:145:ILE:HD13	1:B:301:ILE:HD11	2.00	0.43
1:A:786:ASN:HD22	1:A:788:GLU:H	1.66	0.43
1:B:256:ASP:O	1:B:259:VAL:HG22	2.18	0.43
1:A:398:GLN:HE22	1:B:241:TRP:HZ2	1.66	0.42
1:A:456:TRP:CD2	1:A:480:PRO:HA	2.54	0.42
1:B:433:ALA:O	1:B:498:ARG:NH2	2.52	0.42
1:A:372:ASP:HA	1:A:399:GLU:HA	2.01	0.42
1:A:64:ARG:HD3	1:A:408:PHE:CE1	2.54	0.42
1:B:43:LEU:HB3	1:B:519:LEU:HD11	2.02	0.42
1:B:538:TYR:HB3	1:B:539:PRO:HD3	2.01	0.42
1:B:430:LEU:HB2	1:B:431:PRO:HD3	2.01	0.41
1:B:707:TYR:CA	1:B:770:THR:HG21	2.49	0.41
1:B:798:PHE:C	1:B:800:GLY:HA3	2.40	0.41
1:B:234:THR:O	6:B:903:BTB:H71	2.20	0.41
1:A:600:HIS:HA	1:A:655:ASP:OD1	2.20	0.41
1:B:75:TRP:HA	1:B:160:ILE:O	2.20	0.41
1:B:481:HIS:H	1:B:481:HIS:CD2	2.38	0.41
1:B:479:TYR:HA	1:B:480:PRO:HD3	1.93	0.41
1:B:105:GLU:HA	1:B:356:SER:OG	2.21	0.41
1:B:203:LEU:HD11	1:B:301:ILE:HG23	2.02	0.41
1:B:486:PRO:HD2	1:B:606:TRP:HB3	2.03	0.41
1:B:707:TYR:HB3	1:B:770:THR:HG21	2.02	0.41
1:A:179:SER:HB3	1:A:185:TYR:CD2	2.56	0.40
1:B:609:VAL:CG2	1:B:680:THR:HB	2.50	0.40
1:B:114:GLN:HE21	1:B:414:ARG:HH12	1.64	0.40
1:B:355:PHE:HB2	1:B:806:VAL:HG21	2.02	0.40
1:B:672:TYR:CZ	1:B:711:SER:HA	2.56	0.40
1:B:499:LEU:HD23	1:B:499:LEU:HA	1.98	0.40
1:A:167:GLN:NE2	1:A:201:TYR:OH	2.54	0.40
1:B:274:VAL:HG12	1:B:275:TYR:CD1	2.56	0.40
1:B:733:ASN:HB3	1:B:801:TRP:CG	2.56	0.40
1:A:204:VAL:O	1:A:301:ILE:HA	2.21	0.40
1:A:588:TYR:CD1	1:A:589:PRO:HD2	2.56	0.40

There are no symmetry-related clashes.

5.3 Torsion angles [i](#)

5.3.1 Protein backbone [i](#)

In the following table, the Percentiles column shows the percent Ramachandran outliers of the chain as a percentile score with respect to all X-ray entries followed by that with respect to entries of similar resolution.

The Analysed column shows the number of residues for which the backbone conformation was analysed, and the total number of residues.

Mol	Chain	Analysed	Favoured	Allowed	Outliers	Percentiles	
1	A	765/819 (93%)	740 (97%)	22 (3%)	3 (0%)	34	46
1	B	764/819 (93%)	743 (97%)	18 (2%)	3 (0%)	34	46
All	All	1529/1638 (93%)	1483 (97%)	40 (3%)	6 (0%)	34	46

All (6) Ramachandran outliers are listed below:

Mol	Chain	Res	Type
1	A	309	GLY
1	A	728	SER
1	B	503	ASN
1	B	728	SER
1	A	659	ASP
1	B	96	GLU

5.3.2 Protein sidechains [i](#)

In the following table, the Percentiles column shows the percent sidechain outliers of the chain as a percentile score with respect to all X-ray entries followed by that with respect to entries of similar resolution.

The Analysed column shows the number of residues for which the sidechain conformation was analysed, and the total number of residues.

Mol	Chain	Analysed	Rotameric	Outliers	Percentiles	
1	A	615/707 (87%)	589 (96%)	26 (4%)	30	44
1	B	613/707 (87%)	586 (96%)	27 (4%)	28	42
All	All	1228/1414 (87%)	1175 (96%)	53 (4%)	29	43

All (53) residues with a non-rotameric sidechain are listed below:

Mol	Chain	Res	Type
1	A	158	LYS
1	A	212	ILE
1	A	218	ASP
1	A	234[A]	THR
1	A	234[B]	THR
1	A	237	ASP
1	A	343	GLN
1	A	417	PHE
1	A	423	TRP
1	A	438	ASP
1	A	445	LYS
1	A	470	LYS
1	A	573	ARG
1	A	575	ARG
1	A	611	VAL
1	A	635	ASP
1	A	657	THR
1	A	658	ILE
1	A	676	PHE
1	A	686	ASP
1	A	692	LYS
1	A	725	TYR
1	A	753	LYS
1	A	773	ARG
1	A	786	ASN
1	A	795	THR
1	B	49	LEU
1	B	95	ASN
1	B	105	GLU
1	B	126	THR
1	B	172	SER
1	B	173	GLU
1	B	181	ASN
1	B	227	GLN
1	B	244	LYS
1	B	274	VAL
1	B	323	GLN
1	B	383	ASN
1	B	423	TRP
1	B	438	ASP
1	B	449	ASN
1	B	518	THR
1	B	575	ARG

Continued on next page...

Continued from previous page...

Mol	Chain	Res	Type
1	B	657	THR
1	B	674	SER
1	B	676	PHE
1	B	692	LYS
1	B	725	TYR
1	B	770	THR
1	B	777	GLU
1	B	788	GLU
1	B	801	TRP
1	B	805	VAL

Sometimes sidechains can be flipped to improve hydrogen bonding and reduce clashes. All (34) such sidechains are listed below:

Mol	Chain	Res	Type
1	A	85	GLN
1	A	167	GLN
1	A	231	GLN
1	A	261	ASN
1	A	398	GLN
1	A	461	GLN
1	A	481	HIS
1	A	484	ASN
1	A	592	GLN
1	A	600	HIS
1	A	639	HIS
1	A	748	GLN
1	A	786	ASN
1	A	793	GLN
1	B	95	ASN
1	B	114	GLN
1	B	120	GLN
1	B	137	HIS
1	B	167	GLN
1	B	181	ASN
1	B	217	HIS
1	B	227	GLN
1	B	249	GLN
1	B	323	GLN
1	B	357	ASN
1	B	368	HIS
1	B	481	HIS
1	B	484	ASN

Continued on next page...

Continued from previous page...

Mol	Chain	Res	Type
1	B	544	GLN
1	B	600	HIS
1	B	639	HIS
1	B	664	HIS
1	B	786	ASN
1	B	793	GLN

5.3.3 RNA [i](#)

There are no RNA molecules in this entry.

5.4 Non-standard residues in protein, DNA, RNA chains [i](#)

There are no non-standard protein/DNA/RNA residues in this entry.

5.5 Carbohydrates [i](#)

There are no monosaccharides in this entry.

5.6 Ligand geometry [i](#)

19 ligands are modelled in this entry.

In the following table, the Counts columns list the number of bonds (or angles) for which Mogul statistics could be retrieved, the number of bonds (or angles) that are observed in the model and the number of bonds (or angles) that are defined in the Chemical Component Dictionary. The Link column lists molecule types, if any, to which the group is linked. The Z score for a bond length (or angle) is the number of standard deviations the observed value is removed from the expected value. A bond length (or angle) with $|Z| > 2$ is considered an outlier worth inspection. RMSZ is the root-mean-square of all Z scores of the bond lengths (or angles).

Mol	Type	Chain	Res	Link	Bond lengths			Bond angles		
					Counts	RMSZ	# Z > 2	Counts	RMSZ	# Z > 2
5	NAG	B	902	1	14,14,15	1.28	2 (14%)	17,19,21	3.37	10 (58%)
6	BTB	B	903	-	13,13,13	1.58	1 (7%)	7,16,16	1.19	0
4	SO4	B	905	-	4,4,4	0.39	0	6,6,6	0.19	0
4	SO4	A	904	-	4,4,4	0.35	0	6,6,6	0.17	0
3	GOL	B	904	-	5,5,5	0.26	0	5,5,5	0.71	0
4	SO4	A	906	-	4,4,4	0.31	0	6,6,6	0.08	0
4	SO4	A	911	-	4,4,4	0.24	0	6,6,6	0.12	0

Mol	Type	Chain	Res	Link	Bond lengths			Bond angles		
					Counts	RMSZ	# Z > 2	Counts	RMSZ	# Z > 2
4	SO4	B	908	-	4,4,4	0.21	0	6,6,6	0.25	0
2	UKF	B	901	-	34,39,39	3.63	12 (35%)	42,54,54	2.18	10 (23%)
4	SO4	A	909	-	4,4,4	0.32	0	6,6,6	0.08	0
4	SO4	B	906	-	4,4,4	0.23	0	6,6,6	0.14	0
4	SO4	A	908	-	4,4,4	0.36	0	6,6,6	0.24	0
4	SO4	A	905	-	4,4,4	0.36	0	6,6,6	0.48	0
4	SO4	B	907	-	4,4,4	0.36	0	6,6,6	0.17	0
3	GOL	A	902	-	5,5,5	0.17	0	5,5,5	0.48	0
3	GOL	A	903	-	5,5,5	0.11	0	5,5,5	0.40	0
4	SO4	A	910	-	4,4,4	0.33	0	6,6,6	0.14	0
2	UKF	A	901	-	34,39,39	3.81	13 (38%)	42,54,54	1.65	8 (19%)
4	SO4	A	907	-	4,4,4	0.26	0	6,6,6	0.15	0

In the following table, the Chirals column lists the number of chiral outliers, the number of chiral centers analysed, the number of these observed in the model and the number defined in the Chemical Component Dictionary. Similar counts are reported in the Torsion and Rings columns. '2' means no outliers of that kind were identified.

Mol	Type	Chain	Res	Link	Chirals	Torsions	Rings
5	NAG	B	902	1	-	2/6/23/26	0/1/1/1
2	UKF	A	901	-	-	4/18/50/50	0/4/4/4
6	BTB	B	903	-	-	1/21/21/21	-
2	UKF	B	901	-	-	10/18/50/50	0/4/4/4
3	GOL	B	904	-	-	0/4/4/4	-
3	GOL	A	902	-	-	2/4/4/4	-
3	GOL	A	903	-	-	4/4/4/4	-

All (28) bond length outliers are listed below:

Mol	Chain	Res	Type	Atoms	Z	Observed(Å)	Ideal(Å)
2	A	901	UKF	C4-N1	-13.34	1.23	1.47
2	A	901	UKF	O3-N3	13.33	1.45	1.22
2	B	901	UKF	C4-N1	-12.41	1.25	1.47
2	B	901	UKF	O3-N3	12.39	1.43	1.22
2	B	901	UKF	C9-N2	6.66	1.59	1.45
2	A	901	UKF	C9-N2	5.77	1.57	1.45
6	B	903	BTB	C2-N	4.83	1.58	1.48
2	A	901	UKF	C23-C24	-4.62	1.45	1.52
2	A	901	UKF	C10-C11	3.33	1.45	1.40
2	B	901	UKF	C13-C14	3.20	1.57	1.48
2	A	901	UKF	C10-N2	3.15	1.46	1.37

Continued on next page...

Continued from previous page...

Mol	Chain	Res	Type	Atoms	Z	Observed(Å)	Ideal(Å)
2	B	901	UKF	C12-C11	3.07	1.45	1.39
2	A	901	UKF	C21-C20	3.05	1.44	1.38
2	B	901	UKF	C8-C7	2.95	1.68	1.51
2	B	901	UKF	C10-C11	2.70	1.44	1.40
2	B	901	UKF	C21-C20	2.69	1.43	1.38
2	A	901	UKF	C8-C7	2.63	1.66	1.51
5	B	902	NAG	O4-C4	2.60	1.49	1.43
2	B	901	UKF	C20-C13	2.57	1.44	1.39
2	A	901	UKF	C20-C13	2.57	1.44	1.39
2	B	901	UKF	O7-C24	2.47	1.48	1.43
5	B	902	NAG	C1-C2	2.35	1.55	1.52
2	B	901	UKF	C8-C9	2.20	1.60	1.51
2	A	901	UKF	C13-C14	2.14	1.54	1.48
2	A	901	UKF	C8-C9	2.11	1.60	1.51
2	B	901	UKF	C10-N2	2.08	1.43	1.37
2	A	901	UKF	C1-C24	-2.05	1.47	1.52
2	A	901	UKF	C12-C11	2.03	1.43	1.39

All (28) bond angle outliers are listed below:

Mol	Chain	Res	Type	Atoms	Z	Observed(°)	Ideal(°)
2	B	901	UKF	C14-N5-C15	8.27	108.97	103.79
5	B	902	NAG	C2-N2-C7	7.29	133.29	122.90
5	B	902	NAG	O3-C3-C2	-6.23	96.58	109.47
5	B	902	NAG	C8-C7-N2	5.33	125.13	116.10
2	B	901	UKF	C13-C14-N5	4.76	129.66	123.71
2	A	901	UKF	C13-C14-N4	4.40	124.85	119.12
5	B	902	NAG	C1-O5-C5	4.26	117.96	112.19
2	B	901	UKF	C13-C14-N4	4.12	124.48	119.12
2	A	901	UKF	C14-N5-C15	4.08	106.34	103.79
2	A	901	UKF	C3-C2-C1	-3.43	107.65	112.90
5	B	902	NAG	C4-C3-C2	3.39	115.99	111.02
5	B	902	NAG	O4-C4-C5	3.35	117.61	109.30
2	B	901	UKF	C12-C11-C10	-3.32	118.52	121.53
2	B	901	UKF	C21-C10-N2	-3.13	116.46	121.80
5	B	902	NAG	O4-C4-C3	3.13	117.58	110.35
2	B	901	UKF	C3-C2-C1	-2.99	108.32	112.90
2	B	901	UKF	C8-C9-N2	2.86	119.17	111.49
5	B	902	NAG	O7-C7-N2	-2.76	116.88	121.95
2	B	901	UKF	C4-N1-C2	2.72	120.57	113.29
2	B	901	UKF	C5-C4-N1	2.70	121.27	113.88
2	A	901	UKF	C20-C13-C12	2.58	121.81	118.16

Continued on next page...

Continued from previous page...

Mol	Chain	Res	Type	Atoms	Z	Observed(°)	Ideal(°)
2	B	901	UKF	C9-N2-C10	-2.52	117.33	123.39
5	B	902	NAG	C3-C4-C5	-2.42	105.93	110.24
2	A	901	UKF	O6-C23-C22	2.33	114.11	109.62
2	A	901	UKF	C23-C24-C1	-2.28	106.94	110.89
2	A	901	UKF	C12-C13-C14	-2.21	116.79	120.05
5	B	902	NAG	O7-C7-C8	-2.21	117.95	122.06
2	A	901	UKF	C19-C16-C15	-2.08	111.79	119.20

There are no chirality outliers.

All (23) torsion outliers are listed below:

Mol	Chain	Res	Type	Atoms
2	A	901	UKF	C10-C11-N3-O3
2	A	901	UKF	C12-C11-N3-O3
2	B	901	UKF	C5-C4-N1-C2
2	B	901	UKF	C11-C10-N2-C9
2	B	901	UKF	C20-C13-C14-N4
2	B	901	UKF	C20-C13-C14-N5
2	B	901	UKF	C12-C13-C14-N4
2	B	901	UKF	C12-C13-C14-N5
3	A	903	GOL	O1-C1-C2-C3
3	A	903	GOL	C1-C2-C3-O3
5	B	902	NAG	C8-C7-N2-C2
2	B	901	UKF	C21-C10-N2-C9
2	B	901	UKF	N1-C4-C5-C6
5	B	902	NAG	O7-C7-N2-C2
3	A	903	GOL	O1-C1-C2-O2
2	B	901	UKF	C5-C6-C7-C8
3	A	902	GOL	C1-C2-C3-O3
3	A	903	GOL	O2-C2-C3-O3
2	B	901	UKF	C6-C7-C8-C9
6	B	903	BTB	C8-C7-N-C5
2	A	901	UKF	C6-C7-C8-C9
3	A	902	GOL	O2-C2-C3-O3
2	A	901	UKF	C7-C8-C9-N2

There are no ring outliers.

6 monomers are involved in 9 short contacts:

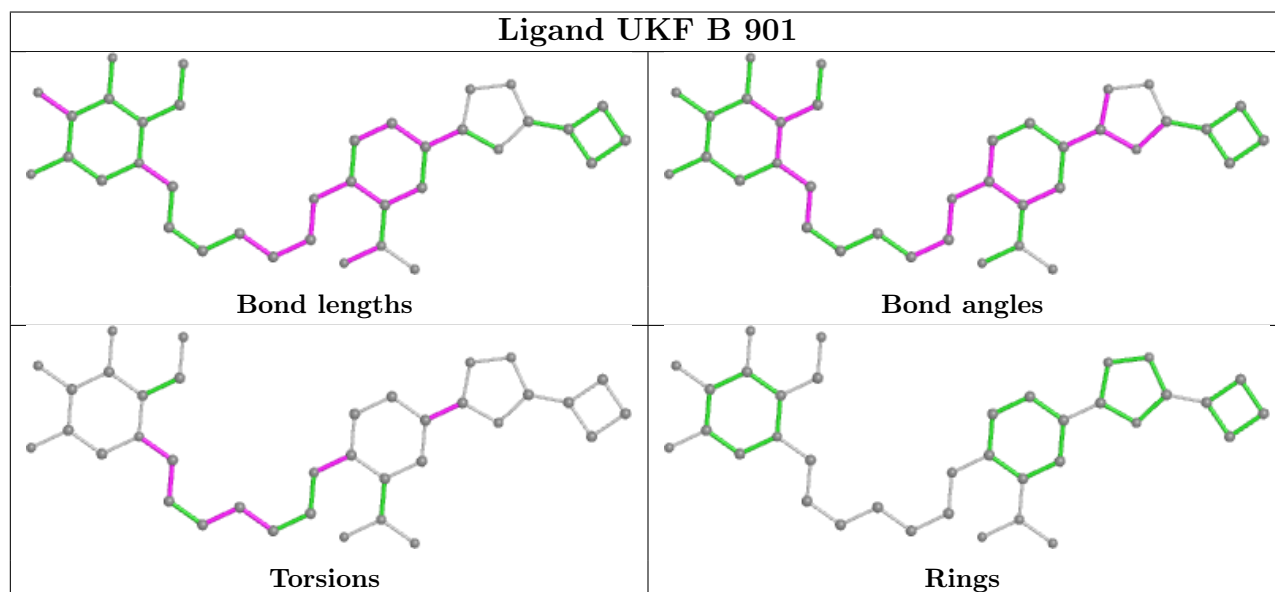
Mol	Chain	Res	Type	Clashes	Symm-Clashes
6	B	903	BTB	3	0

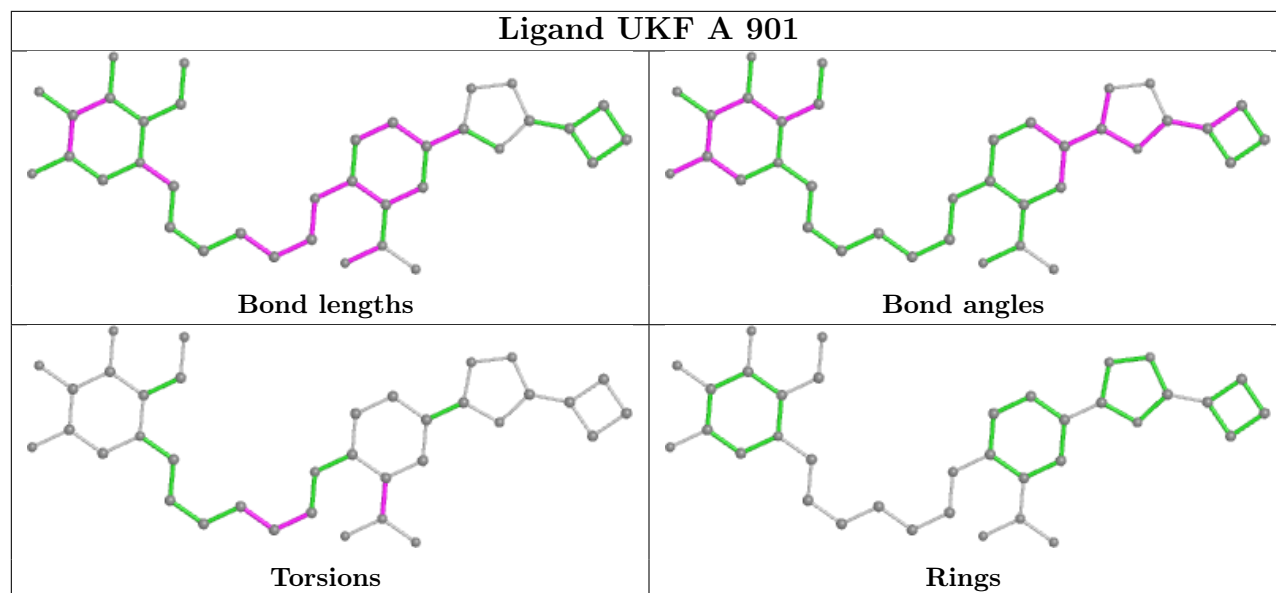
Continued on next page...

Continued from previous page...

Mol	Chain	Res	Type	Clashes	Symm-Clashes
4	B	905	SO4	1	0
4	A	909	SO4	1	0
4	B	907	SO4	1	0
3	A	902	GOL	2	0
4	A	910	SO4	1	0

The following is a two-dimensional graphical depiction of Mogul quality analysis of bond lengths, bond angles, torsion angles, and ring geometry for all instances of the Ligand of Interest. In addition, ligands with molecular weight > 250 and outliers as shown on the validation Tables will also be included. For torsion angles, if less than 5% of the Mogul distribution of torsion angles is within 10 degrees of the torsion angle in question, then that torsion angle is considered an outlier. Any bond that is central to one or more torsion angles identified as an outlier by Mogul will be highlighted in the graph. For rings, the root-mean-square deviation (RMSD) between the ring in question and similar rings identified by Mogul is calculated over all ring torsion angles. If the average RMSD is greater than 60 degrees and the minimal RMSD between the ring in question and any Mogul-identified rings is also greater than 60 degrees, then that ring is considered an outlier. The outliers are highlighted in purple. The color gray indicates Mogul did not find sufficient equivalents in the CSD to analyse the geometry.





5.7 Other polymers [i](#)

There are no such residues in this entry.

5.8 Polymer linkage issues [i](#)

There are no chain breaks in this entry.

6 Fit of model and data [i](#)

6.1 Protein, DNA and RNA chains [i](#)

In the following table, the column labelled ‘#RSRZ > 2’ contains the number (and percentage) of RSRZ outliers, followed by percent RSRZ outliers for the chain as percentile scores relative to all X-ray entries and entries of similar resolution. The OWAB column contains the minimum, median, 95th percentile and maximum values of the occupancy-weighted average B-factor per residue. The column labelled ‘Q < 0.9’ lists the number of (and percentage) of residues with an average occupancy less than 0.9.

Mol	Chain	Analysed	<RSRZ>	#RSRZ>2	OWAB(Å ²)	Q<0.9
1	A	765/819 (93%)	-0.23	8 (1%) 82 83	30, 43, 66, 90	0
1	B	767/819 (93%)	-0.34	4 (0%) 91 91	29, 43, 63, 115	0
All	All	1532/1638 (93%)	-0.29	12 (0%) 86 86	29, 43, 65, 115	0

All (12) RSRZ outliers are listed below:

Mol	Chain	Res	Type	RSRZ
1	A	621	LEU	3.4
1	A	37	HIS	2.7
1	A	151	ASP	2.6
1	B	718	PHE	2.4
1	A	560	ASP	2.3
1	A	499	LEU	2.2
1	B	181	ASN	2.1
1	A	310	LYS	2.1
1	B	170	GLU	2.1
1	A	309	GLY	2.1
1	B	216	ASP	2.1
1	A	194	ARG	2.0

6.2 Non-standard residues in protein, DNA, RNA chains [i](#)

There are no non-standard protein/DNA/RNA residues in this entry.

6.3 Carbohydrates [i](#)

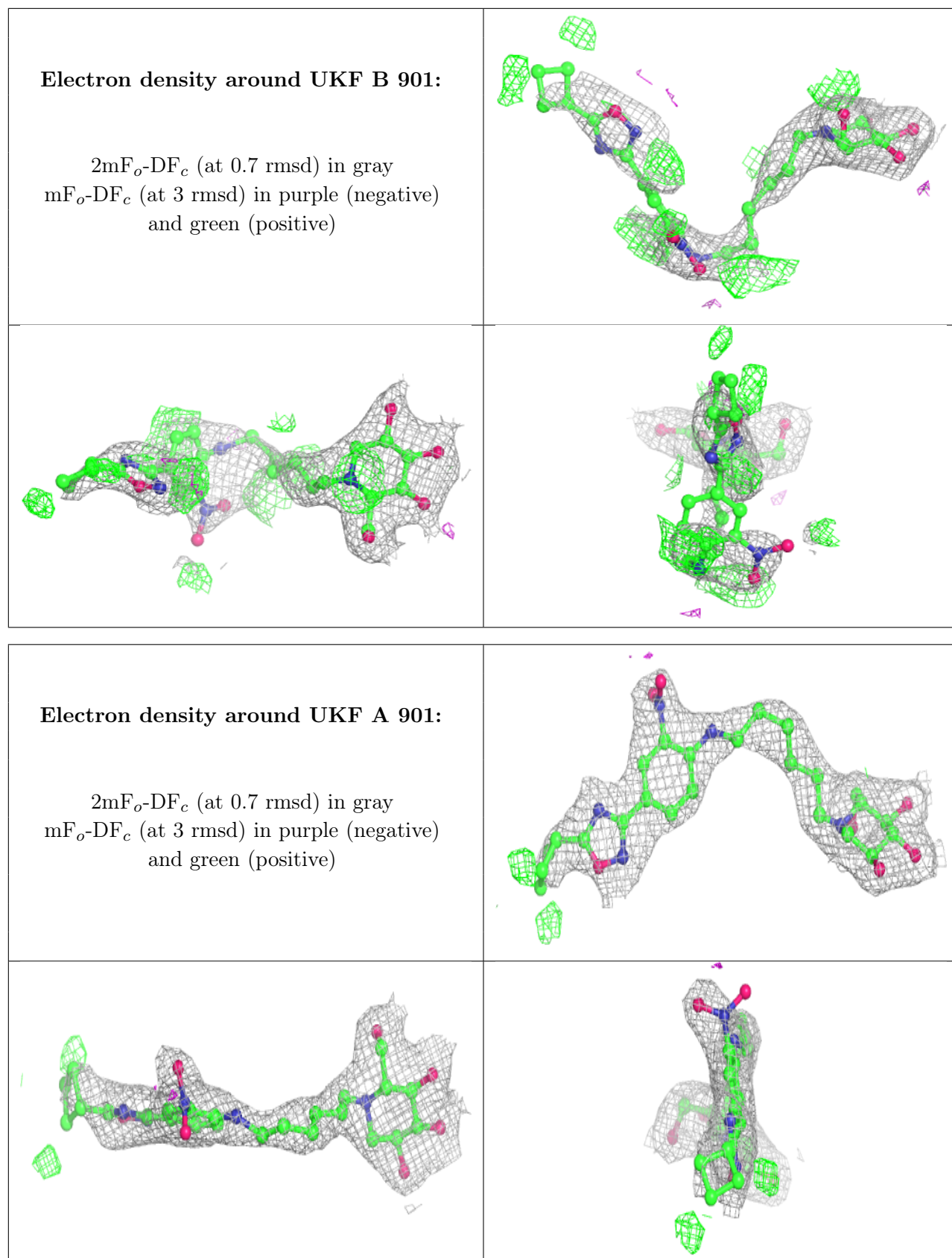
There are no monosaccharides in this entry.

6.4 Ligands

In the following table, the Atoms column lists the number of modelled atoms in the group and the number defined in the chemical component dictionary. The B-factors column lists the minimum, median, 95th percentile and maximum values of B factors of atoms in the group. The column labelled 'Q< 0.9' lists the number of atoms with occupancy less than 0.9.

Mol	Type	Chain	Res	Atoms	RSCC	RSR	B-factors(Å ²)	Q<0.9
6	BTB	B	903	14/14	0.81	0.18	59,64,71,73	0
3	GOL	A	902	6/6	0.85	0.19	68,76,82,90	0
4	SO4	A	906	5/5	0.87	0.36	115,117,119,125	0
3	GOL	A	903	6/6	0.88	0.20	68,74,82,84	0
2	UKF	B	901	36/36	0.90	0.24	41,104,150,153	0
5	NAG	B	902	14/15	0.90	0.18	49,60,73,75	0
4	SO4	A	904	5/5	0.90	0.20	86,100,115,127	0
4	SO4	A	911	5/5	0.93	0.22	84,96,106,113	0
3	GOL	B	904	6/6	0.93	0.16	31,45,51,54	0
4	SO4	A	910	5/5	0.93	0.14	74,89,97,101	0
4	SO4	A	909	5/5	0.94	0.21	90,92,93,105	0
4	SO4	B	906	5/5	0.95	0.12	71,73,76,85	0
2	UKF	A	901	36/36	0.96	0.19	33,63,111,117	0
4	SO4	A	907	5/5	0.96	0.10	73,81,90,98	0
4	SO4	B	908	5/5	0.98	0.16	53,66,76,80	0
4	SO4	A	908	5/5	0.98	0.14	60,66,80,92	0
4	SO4	B	907	5/5	0.98	0.15	61,73,79,90	0
4	SO4	B	905	5/5	0.99	0.10	40,44,48,60	0
4	SO4	A	905	5/5	0.99	0.14	42,46,47,49	0

The following is a graphical depiction of the model fit to experimental electron density of all instances of the Ligand of Interest. In addition, ligands with molecular weight > 250 and outliers as shown on the geometry validation Tables will also be included. Each fit is shown from different orientation to approximate a three-dimensional view.



6.5 Other polymers [i](#)

There are no such residues in this entry.