



# Full wwPDB X-ray Structure Validation Report ⓘ

Oct 9, 2023 – 01:47 PM EDT

PDB ID : 8DNJ  
Title : Crystal structure of human KRAS G12C covalently bound with AstraZeneca  
WO2020/178282A1 compound 76  
Authors : Mohr, C.  
Deposited on : 2022-07-11  
Resolution : 1.81 Å(reported)

This is a Full wwPDB X-ray Structure Validation Report for a publicly released PDB entry.

We welcome your comments at [validation@mail.wwpdb.org](mailto:validation@mail.wwpdb.org)

A user guide is available at

<https://www.wwpdb.org/validation/2017/XrayValidationReportHelp>

with specific help available everywhere you see the ⓘ symbol.

The types of validation reports are described at

<http://www.wwpdb.org/validation/2017/FAQs#types>.

---

The following versions of software and data (see [references ⓘ](#)) were used in the production of this report:

MolProbity : 4.02b-467  
Mogul : 1.8.5 (274361), CSD as541be (2020)  
Xtrriage (Phenix) : 1.13  
EDS : 2.35.1  
buster-report : 1.1.7 (2018)  
Percentile statistics : 20191225.v01 (using entries in the PDB archive December 25th 2019)  
Refmac : 5.8.0158  
CCP4 : 7.0.044 (Gargrove)  
Ideal geometry (proteins) : Engh & Huber (2001)  
Ideal geometry (DNA, RNA) : Parkinson et al. (1996)  
Validation Pipeline (wwPDB-VP) : 2.35.1

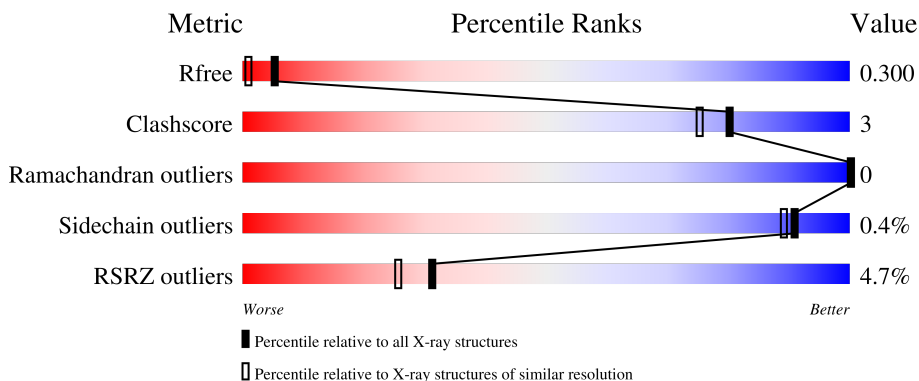
# 1 Overall quality at a glance

The following experimental techniques were used to determine the structure:

*X-RAY DIFFRACTION*

The reported resolution of this entry is 1.81 Å.

Percentile scores (ranging between 0-100) for global validation metrics of the entry are shown in the following graphic. The table shows the number of entries on which the scores are based.



Metric	Whole archive (#Entries)	Similar resolution (#Entries, resolution range(Å))
$R_{free}$	130704	7484 (1.84-1.80)
Clashscore	141614	8401 (1.84-1.80)
Ramachandran outliers	138981	8290 (1.84-1.80)
Sidechain outliers	138945	8290 (1.84-1.80)
RSRZ outliers	127900	7371 (1.84-1.80)

The table below summarises the geometric issues observed across the polymeric chains and their fit to the electron density. The red, orange, yellow and green segments of the lower bar indicate the fraction of residues that contain outliers for  $\geq 3$ , 2, 1 and 0 types of geometric quality criteria respectively. A grey segment represents the fraction of residues that are not modelled. The numeric value for each fraction is indicated below the corresponding segment, with a dot representing fractions  $\leq 5\%$ . The upper red bar (where present) indicates the fraction of residues that have poor fit to the electron density. The numeric value is given above the bar.

Mol	Chain	Length	Quality of chain
1	A	184	 3% 86% 7% 4% 2%
1	B	184	 3% 88% 7% 2% 2%
1	C	184	 7% 83% 8% 3% 2%

## 2 Entry composition

There are 5 unique types of molecules in this entry. The entry contains 4418 atoms, of which 0 are hydrogens and 0 are deuteriums.

In the tables below, the ZeroOcc column contains the number of atoms modelled with zero occupancy, the AltConf column contains the number of residues with at least one atom in alternate conformation and the Trace column contains the number of residues modelled with at most 2 atoms.

- Molecule 1 is a protein called Isoform 2B of GTPase KRas.

Mol	Chain	Residues	Atoms					ZeroOcc	AltConf	Trace
			Total	C	N	O	S			
1	A	170	1363	853	235	270	5	0	1	0
1	B	168	1342	841	230	266	5	0	0	0
1	C	168	1337	837	229	266	5	0	0	0

There are 57 discrepancies between the modelled and reference sequences:

Chain	Residue	Modelled	Actual	Comment	Reference
A	-14	MET	-	initiating methionine	UNP P01116-2
A	-13	LYS	-	expression tag	UNP P01116-2
A	-12	HIS	-	expression tag	UNP P01116-2
A	-11	HIS	-	expression tag	UNP P01116-2
A	-10	HIS	-	expression tag	UNP P01116-2
A	-9	HIS	-	expression tag	UNP P01116-2
A	-8	HIS	-	expression tag	UNP P01116-2
A	-7	HIS	-	expression tag	UNP P01116-2
A	-6	HIS	-	expression tag	UNP P01116-2
A	-5	LEU	-	expression tag	UNP P01116-2
A	-4	VAL	-	expression tag	UNP P01116-2
A	-3	PRO	-	expression tag	UNP P01116-2
A	-2	ARG	-	expression tag	UNP P01116-2
A	-1	GLY	-	expression tag	UNP P01116-2
A	0	SER	-	expression tag	UNP P01116-2
A	12	CYS	GLY	variant	UNP P01116-2
A	51	SER	CYS	engineered mutation	UNP P01116-2
A	80	LEU	CYS	engineered mutation	UNP P01116-2
A	118	SER	CYS	engineered mutation	UNP P01116-2
B	-14	MET	-	initiating methionine	UNP P01116-2
B	-13	LYS	-	expression tag	UNP P01116-2
B	-12	HIS	-	expression tag	UNP P01116-2
B	-11	HIS	-	expression tag	UNP P01116-2

*Continued on next page...*

*Continued from previous page...*

Chain	Residue	Modelled	Actual	Comment	Reference
B	-10	HIS	-	expression tag	UNP P01116-2
B	-9	HIS	-	expression tag	UNP P01116-2
B	-8	HIS	-	expression tag	UNP P01116-2
B	-7	HIS	-	expression tag	UNP P01116-2
B	-6	HIS	-	expression tag	UNP P01116-2
B	-5	LEU	-	expression tag	UNP P01116-2
B	-4	VAL	-	expression tag	UNP P01116-2
B	-3	PRO	-	expression tag	UNP P01116-2
B	-2	ARG	-	expression tag	UNP P01116-2
B	-1	GLY	-	expression tag	UNP P01116-2
B	0	SER	-	expression tag	UNP P01116-2
B	12	CYS	GLY	variant	UNP P01116-2
B	51	SER	CYS	engineered mutation	UNP P01116-2
B	80	LEU	CYS	engineered mutation	UNP P01116-2
B	118	SER	CYS	engineered mutation	UNP P01116-2
C	-14	MET	-	initiating methionine	UNP P01116-2
C	-13	LYS	-	expression tag	UNP P01116-2
C	-12	HIS	-	expression tag	UNP P01116-2
C	-11	HIS	-	expression tag	UNP P01116-2
C	-10	HIS	-	expression tag	UNP P01116-2
C	-9	HIS	-	expression tag	UNP P01116-2
C	-8	HIS	-	expression tag	UNP P01116-2
C	-7	HIS	-	expression tag	UNP P01116-2
C	-6	HIS	-	expression tag	UNP P01116-2
C	-5	LEU	-	expression tag	UNP P01116-2
C	-4	VAL	-	expression tag	UNP P01116-2
C	-3	PRO	-	expression tag	UNP P01116-2
C	-2	ARG	-	expression tag	UNP P01116-2
C	-1	GLY	-	expression tag	UNP P01116-2
C	0	SER	-	expression tag	UNP P01116-2
C	12	CYS	GLY	variant	UNP P01116-2
C	51	SER	CYS	engineered mutation	UNP P01116-2
C	80	LEU	CYS	engineered mutation	UNP P01116-2
C	118	SER	CYS	engineered mutation	UNP P01116-2

- Molecule 2 is MAGNESIUM ION (three-letter code: MG) (formula: Mg).

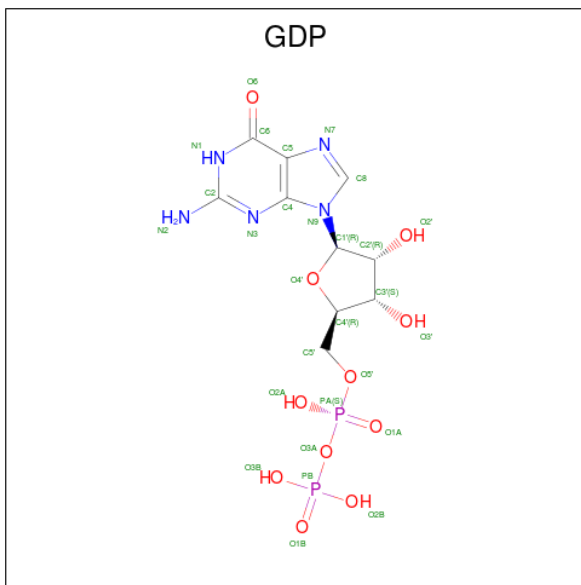
Mol	Chain	Residues	Atoms	ZeroOcc	AltConf
2	A	1	Total Mg 1 1	0	0
2	B	1	Total Mg 1 1	0	0

*Continued on next page...*

Continued from previous page...

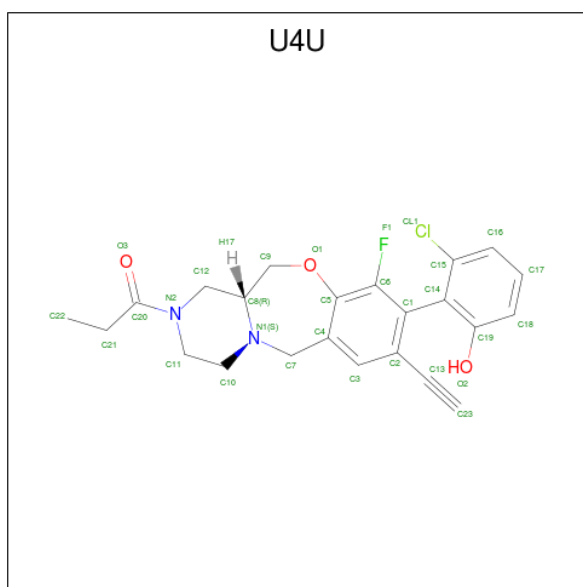
Mol	Chain	Residues	Atoms		ZeroOcc	AltConf
2	C	1	Total	Mg	0	0
			1	1		

- Molecule 3 is GUANOSINE-5'-DIPHOSPHATE (three-letter code: GDP) (formula:  $C_{10}H_{15}N_5O_{11}P_2$ ).



Mol	Chain	Residues	Atoms				ZeroOcc	AltConf	
3	A	1	Total	C	N	O	P	0	0
			28	10	5	11	2		
3	B	1	Total	C	N	O	P	0	0
			28	10	5	11	2		
3	C	1	Total	C	N	O	P	0	0
			28	10	5	11	2		

- Molecule 4 is 1-[(5S,9P,12aR)-9-(2-chloro-6-hydroxyphenyl)-8-ethynyl-10-fluoro-3,4,12,12a-tetrahydro-6H-pyrazino[2,1-c][1,4]benzoxazepin-2(1H)-yl]propan-1-one (three-letter code: U4U) (formula:  $C_{23}H_{22}ClFN_2O_3$ ) (labeled as "Ligand of Interest" by depositor).



Mol	Chain	Residues	Atoms					ZeroOcc	AltConf	
			Total	C	Cl	F	N			O
4	A	1	Total	C	Cl	F	N	O	0	0
			30	23	1	1	2	3		
4	B	1	Total	C	Cl	F	N	O	0	0
			30	23	1	1	2	3		
4	C	1	Total	C	Cl	F	N	O	0	0
			30	23	1	1	2	3		

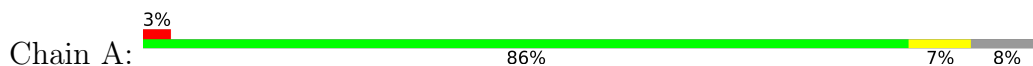
- Molecule 5 is water.

Mol	Chain	Residues	Atoms		ZeroOcc	AltConf
5	A	70	Total	O	0	0
			70	70		
5	B	74	Total	O	0	0
			74	74		
5	C	55	Total	O	0	0
			55	55		

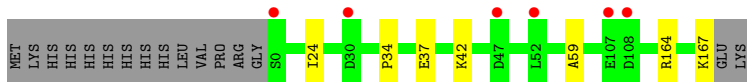
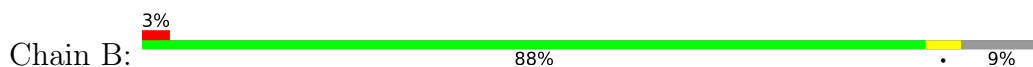
### 3 Residue-property plots [i](#)

These plots are drawn for all protein, RNA, DNA and oligosaccharide chains in the entry. The first graphic for a chain summarises the proportions of the various outlier classes displayed in the second graphic. The second graphic shows the sequence view annotated by issues in geometry and electron density. Residues are color-coded according to the number of geometric quality criteria for which they contain at least one outlier: green = 0, yellow = 1, orange = 2 and red = 3 or more. A red dot above a residue indicates a poor fit to the electron density ( $RSRZ > 2$ ). Stretches of 2 or more consecutive residues without any outlier are shown as a green connector. Residues present in the sample, but not in the model, are shown in grey.

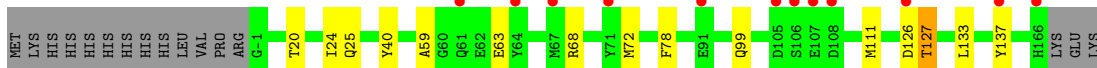
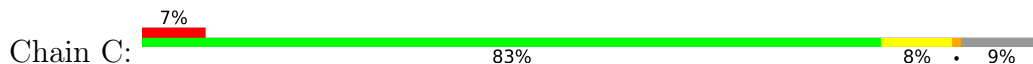
- Molecule 1: Isoform 2B of GTPase KRas



- Molecule 1: Isoform 2B of GTPase KRas



- Molecule 1: Isoform 2B of GTPase KRas



## 4 Data and refinement statistics

Property	Value	Source
Space group	P 1 21 1	Depositor
Cell constants a, b, c, $\alpha$ , $\beta$ , $\gamma$	37.59Å 112.16Å 57.82Å 90.00° 96.80° 90.00°	Depositor
Resolution (Å)	30.00 – 1.81 29.73 – 1.81	Depositor EDS
% Data completeness (in resolution range)	99.5 (30.00-1.81) 99.5 (29.73-1.81)	Depositor EDS
$R_{merge}$	(Not available)	Depositor
$R_{sym}$	(Not available)	Depositor
$\langle I/\sigma(I) \rangle$ <sup>1</sup>	1.30 (at 1.80Å)	Xtrriage
Refinement program	REFMAC v5.8.0267	Depositor
R, $R_{free}$	0.239 , 0.289 0.252 , 0.300	Depositor DCC
$R_{free}$ test set	2186 reflections (5.08%)	wwPDB-VP
Wilson B-factor (Å <sup>2</sup> )	17.8	Xtrriage
Anisotropy	0.453	Xtrriage
Bulk solvent $k_{sol}$ (e/Å <sup>3</sup> ), $B_{sol}$ (Å <sup>2</sup> )	0.32 , 29.1	EDS
L-test for twinning <sup>2</sup>	$\langle  L  \rangle = 0.49$ , $\langle L^2 \rangle = 0.33$	Xtrriage
Estimated twinning fraction	No twinning to report.	Xtrriage
$F_o, F_c$ correlation	0.92	EDS
Total number of atoms	4418	wwPDB-VP
Average B, all atoms (Å <sup>2</sup> )	27.0	wwPDB-VP

Xtrriage's analysis on translational NCS is as follows: *The largest off-origin peak in the Patterson function is 6.19% of the height of the origin peak. No significant pseudotranslation is detected.*

<sup>1</sup>Intensities estimated from amplitudes.

<sup>2</sup>Theoretical values of  $\langle |L| \rangle$ ,  $\langle L^2 \rangle$  for acentric reflections are 0.5, 0.333 respectively for untwinned datasets, and 0.375, 0.2 for perfectly twinned datasets.



## 5 Model quality

### 5.1 Standard geometry

Bond lengths and bond angles in the following residue types are not validated in this section: GDP, U4U, MG

The Z score for a bond length (or angle) is the number of standard deviations the observed value is removed from the expected value. A bond length (or angle) with  $|Z| > 5$  is considered an outlier worth inspection. RMSZ is the root-mean-square of all Z scores of the bond lengths (or angles).

Mol	Chain	Bond lengths		Bond angles	
		RMSZ	# Z  >5	RMSZ	# Z  >5
1	A	0.64	0/1387	0.75	0/1870
1	B	0.64	0/1363	0.74	0/1839
1	C	0.65	0/1358	0.76	0/1833
All	All	0.64	0/4108	0.75	0/5542

There are no bond length outliers.

There are no bond angle outliers.

There are no chirality outliers.

There are no planarity outliers.

### 5.2 Too-close contacts

In the following table, the Non-H and H(model) columns list the number of non-hydrogen atoms and hydrogen atoms in the chain respectively. The H(added) column lists the number of hydrogen atoms added and optimized by MolProbity. The Clashes column lists the number of clashes within the asymmetric unit, whereas Symm-Clashes lists symmetry-related clashes.

Mol	Chain	Non-H	H(model)	H(added)	Clashes	Symm-Clashes
1	A	1363	0	1348	7	0
1	B	1342	0	1326	5	0
1	C	1337	0	1316	11	0
2	A	1	0	0	0	0
2	B	1	0	0	0	0
2	C	1	0	0	0	0
3	A	28	0	12	0	0
3	B	28	0	12	0	0
3	C	28	0	12	0	0
4	A	30	0	0	0	0

*Continued on next page...*

*Continued from previous page...*

Mol	Chain	Non-H	H(model)	H(added)	Clashes	Symm-Clashes
4	B	30	0	0	0	0
4	C	30	0	0	2	0
5	A	70	0	0	0	0
5	B	74	0	0	0	0
5	C	55	0	0	0	0
All	All	4418	0	4026	22	0

The all-atom clashscore is defined as the number of clashes found per 1000 atoms (including hydrogen atoms). The all-atom clashscore for this structure is 3.

All (22) close contacts within the same asymmetric unit are listed below, sorted by their clash magnitude.

Atom-1	Atom-2	Interatomic distance (Å)	Clash overlap (Å)
1:B:24:ILE:CD1	1:B:42:LYS:HB2	2.18	0.74
1:B:24:ILE:HD13	1:B:42:LYS:HB2	1.84	0.58
1:B:164:ARG:HA	1:B:167:LYS:HE3	1.86	0.57
1:C:59:ALA:O	1:C:68:ARG:NH2	2.38	0.57
1:C:20:THR:O	1:C:24:ILE:HD12	2.07	0.55
1:C:24:ILE:HG22	1:C:25:GLN:HG3	1.88	0.55
1:C:63:GLU:O	4:C:303:U4U:O2	2.25	0.54
1:A:20:THR:O	1:A:24:ILE:HG12	2.12	0.50
1:A:148:THR:O	1:A:149[A]:ARG:HB2	2.11	0.49
1:A:27:HIS:HB2	1:B:37:GLU:O	2.12	0.49
1:A:79:LEU:HG	1:A:114:VAL:HG21	1.96	0.47
1:C:133:LEU:HD11	1:C:137:TYR:OH	2.16	0.46
1:A:41:ARG:NH1	1:A:54:ASP:OD2	2.48	0.46
1:C:99:GLN:HG2	4:C:303:U4U:C23	2.46	0.46
1:A:148:THR:O	1:A:149[B]:ARG:HB2	2.16	0.45
1:B:34:PRO:O	1:B:59:ALA:HB1	2.19	0.43
1:C:24:ILE:HD13	1:C:40:TYR:CB	2.48	0.43
1:C:68:ARG:O	1:C:72:MET:HG2	2.19	0.42
1:C:126:ASP:OD1	1:C:127:THR:N	2.52	0.42
1:C:20:THR:HG22	1:C:24:ILE:CD1	2.51	0.41
1:C:78:PHE:O	1:C:111:MET:HA	2.20	0.41
1:A:80:LEU:HD11	1:A:111:MET:SD	2.61	0.40

There are no symmetry-related clashes.

## 5.3 Torsion angles [i](#)

### 5.3.1 Protein backbone [i](#)

In the following table, the Percentiles column shows the percent Ramachandran outliers of the chain as a percentile score with respect to all X-ray entries followed by that with respect to entries of similar resolution.

The Analysed column shows the number of residues for which the backbone conformation was analysed, and the total number of residues.

Mol	Chain	Analysed	Favoured	Allowed	Outliers	Percentiles	
1	A	169/184 (92%)	164 (97%)	5 (3%)	0	100	100
1	B	166/184 (90%)	165 (99%)	1 (1%)	0	100	100
1	C	166/184 (90%)	163 (98%)	3 (2%)	0	100	100
All	All	501/552 (91%)	492 (98%)	9 (2%)	0	100	100

There are no Ramachandran outliers to report.

### 5.3.2 Protein sidechains [i](#)

In the following table, the Percentiles column shows the percent sidechain outliers of the chain as a percentile score with respect to all X-ray entries followed by that with respect to entries of similar resolution.

The Analysed column shows the number of residues for which the sidechain conformation was analysed, and the total number of residues.

Mol	Chain	Analysed	Rotameric	Outliers	Percentiles	
1	A	151/164 (92%)	150 (99%)	1 (1%)	84	80
1	B	149/164 (91%)	149 (100%)	0	100	100
1	C	148/164 (90%)	147 (99%)	1 (1%)	84	80
All	All	448/492 (91%)	446 (100%)	2 (0%)	91	89

All (2) residues with a non-rotameric sidechain are listed below:

Mol	Chain	Res	Type
1	A	9	VAL
1	C	127	THR

Sometimes sidechains can be flipped to improve hydrogen bonding and reduce clashes. All (5) such sidechains are listed below:

Mol	Chain	Res	Type
1	B	27	HIS
1	B	94	HIS
1	B	150	GLN
1	C	27	HIS
1	C	150	GLN

### 5.3.3 RNA [i](#)

There are no RNA molecules in this entry.

### 5.4 Non-standard residues in protein, DNA, RNA chains [i](#)

There are no non-standard protein/DNA/RNA residues in this entry.

### 5.5 Carbohydrates [i](#)

There are no monosaccharides in this entry.

### 5.6 Ligand geometry [i](#)

Of 9 ligands modelled in this entry, 3 are monoatomic - leaving 6 for Mogul analysis.

In the following table, the Counts columns list the number of bonds (or angles) for which Mogul statistics could be retrieved, the number of bonds (or angles) that are observed in the model and the number of bonds (or angles) that are defined in the Chemical Component Dictionary. The Link column lists molecule types, if any, to which the group is linked. The Z score for a bond length (or angle) is the number of standard deviations the observed value is removed from the expected value. A bond length (or angle) with  $|Z| > 2$  is considered an outlier worth inspection. RMSZ is the root-mean-square of all Z scores of the bond lengths (or angles).

Mol	Type	Chain	Res	Link	Bond lengths			Bond angles		
					Counts	RMSZ	# Z  > 2	Counts	RMSZ	# Z  > 2
3	GDP	B	302	2	24,30,30	0.93	1 (4%)	30,47,47	1.08	2 (6%)
3	GDP	A	302	2	24,30,30	0.93	1 (4%)	30,47,47	1.14	2 (6%)
4	U4U	C	303	1	33,33,33	1.11	1 (3%)	40,48,48	1.95	10 (25%)
4	U4U	B	303	1	33,33,33	1.12	2 (6%)	40,48,48	1.87	9 (22%)
3	GDP	C	302	2	24,30,30	0.91	1 (4%)	30,47,47	1.14	2 (6%)
4	U4U	A	303	1	33,33,33	1.02	1 (3%)	40,48,48	1.99	12 (30%)

In the following table, the Chirals column lists the number of chiral outliers, the number of chiral

centers analysed, the number of these observed in the model and the number defined in the Chemical Component Dictionary. Similar counts are reported in the Torsion and Rings columns. '2' means no outliers of that kind were identified.

Mol	Type	Chain	Res	Link	Chirals	Torsions	Rings
3	GDP	B	302	2	-	2/12/32/32	0/3/3/3
3	GDP	A	302	2	-	3/12/32/32	0/3/3/3
4	U4U	C	303	1	-	3/11/34/34	0/3/4/4
4	U4U	B	303	1	-	2/11/34/34	0/3/4/4
3	GDP	C	302	2	-	0/12/32/32	0/3/3/3
4	U4U	A	303	1	-	2/11/34/34	0/3/4/4

All (7) bond length outliers are listed below:

Mol	Chain	Res	Type	Atoms	Z	Observed(Å)	Ideal(Å)
4	C	303	U4U	C14-C1	-4.76	1.39	1.50
4	B	303	U4U	C14-C1	-4.54	1.40	1.50
4	A	303	U4U	C14-C1	-4.07	1.41	1.50
3	A	302	GDP	C6-N1	-2.29	1.34	1.37
3	B	302	GDP	C6-N1	-2.28	1.34	1.37
4	B	303	U4U	C12-N2	2.22	1.49	1.46
3	C	302	GDP	C6-N1	-2.19	1.34	1.37

All (37) bond angle outliers are listed below:

Mol	Chain	Res	Type	Atoms	Z	Observed(°)	Ideal(°)
4	A	303	U4U	C7-C4-C5	6.03	127.02	119.65
4	B	303	U4U	C7-C4-C5	5.82	126.77	119.65
4	C	303	U4U	C7-C4-C5	5.34	126.18	119.65
4	A	303	U4U	C7-C4-C3	-4.66	113.19	119.17
4	C	303	U4U	C7-C4-C3	-4.53	113.36	119.17
4	B	303	U4U	C7-C4-C3	-4.41	113.51	119.17
4	A	303	U4U	C22-C21-C20	4.29	120.64	112.72
4	B	303	U4U	C22-C21-C20	4.17	120.43	112.72
4	C	303	U4U	C22-C21-C20	3.83	119.79	112.72
4	C	303	U4U	O1-C5-C6	-3.77	112.28	118.23
4	C	303	U4U	O1-C5-C4	3.56	127.37	119.54
4	B	303	U4U	O1-C5-C4	3.54	127.33	119.54
4	B	303	U4U	O1-C5-C6	-3.42	112.83	118.23
4	A	303	U4U	O1-C5-C6	-3.38	112.91	118.23
4	C	303	U4U	C7-N1-C8	-3.29	108.58	115.23
4	A	303	U4U	O1-C5-C4	3.28	126.75	119.54
4	C	303	U4U	C4-C7-N1	-3.07	107.34	115.00

*Continued on next page...*

Continued from previous page...

Mol	Chain	Res	Type	Atoms	Z	Observed(°)	Ideal(°)
4	A	303	U4U	C1-C14-C15	2.80	124.97	121.69
3	C	302	GDP	C8-N7-C5	2.73	108.19	102.99
4	C	303	U4U	C2-C3-C4	-2.68	119.26	121.89
4	A	303	U4U	C4-C7-N1	-2.56	108.60	115.00
4	B	303	U4U	C4-C7-N1	-2.55	108.64	115.00
4	B	303	U4U	C11-N2-C12	2.52	118.11	113.06
4	A	303	U4U	C7-N1-C8	-2.42	110.34	115.23
3	A	302	GDP	C5-C6-N1	2.42	118.22	113.95
4	C	303	U4U	C16-C15-C14	-2.33	119.86	122.35
4	B	303	U4U	C21-C20-N2	2.33	121.72	117.95
3	A	302	GDP	C8-N7-C5	2.26	107.30	102.99
4	A	303	U4U	C11-N2-C12	2.25	117.57	113.06
3	C	302	GDP	C5-C6-N1	2.23	117.90	113.95
3	B	302	GDP	C5-C6-N1	2.22	117.87	113.95
3	B	302	GDP	C8-N7-C5	2.21	107.20	102.99
4	B	303	U4U	C16-C15-C14	-2.21	120.00	122.35
4	C	303	U4U	C11-N2-C12	2.19	117.45	113.06
4	A	303	U4U	C2-C3-C4	-2.12	119.81	121.89
4	A	303	U4U	C16-C15-C14	-2.10	120.11	122.35
4	A	303	U4U	C21-C20-N2	2.05	121.27	117.95

There are no chirality outliers.

All (12) torsion outliers are listed below:

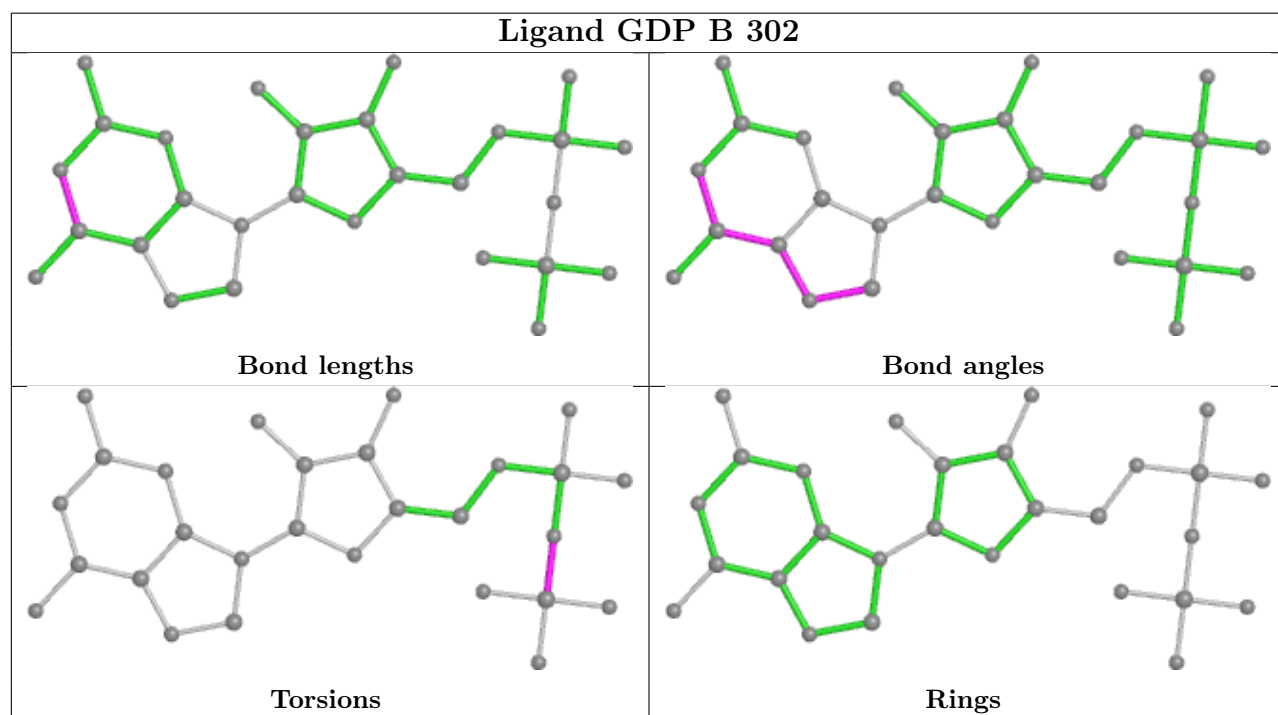
Mol	Chain	Res	Type	Atoms
3	A	302	GDP	PA-O3A-PB-O2B
3	A	302	GDP	PA-O3A-PB-O3B
3	B	302	GDP	PA-O3A-PB-O2B
4	C	303	U4U	C23-C13-C2-C3
4	A	303	U4U	N2-C20-C21-C22
4	B	303	U4U	N2-C20-C21-C22
4	C	303	U4U	N2-C20-C21-C22
4	A	303	U4U	O3-C20-C21-C22
4	B	303	U4U	O3-C20-C21-C22
4	C	303	U4U	O3-C20-C21-C22
3	B	302	GDP	PA-O3A-PB-O1B
3	A	302	GDP	PA-O3A-PB-O1B

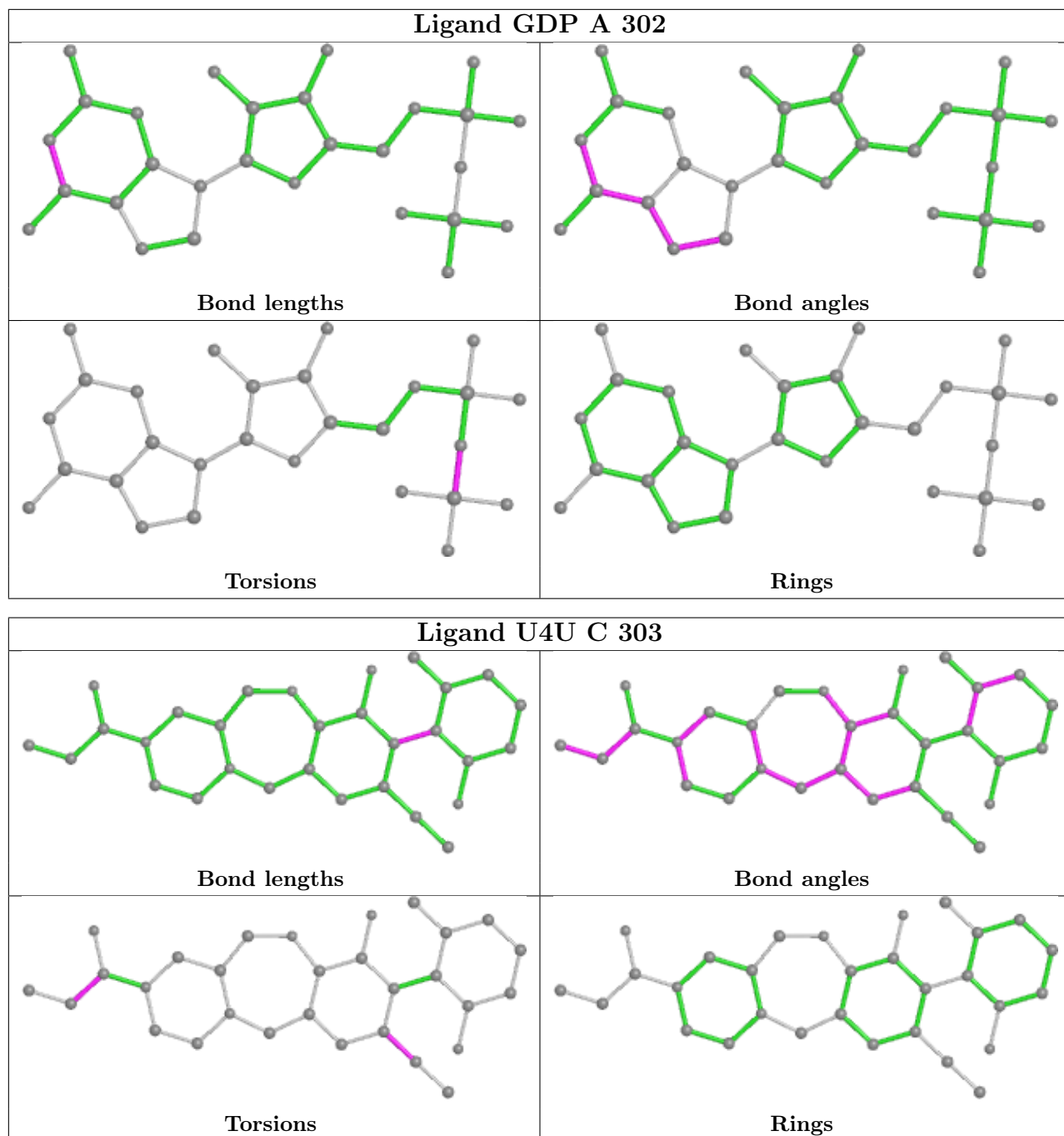
There are no ring outliers.

1 monomer is involved in 2 short contacts:

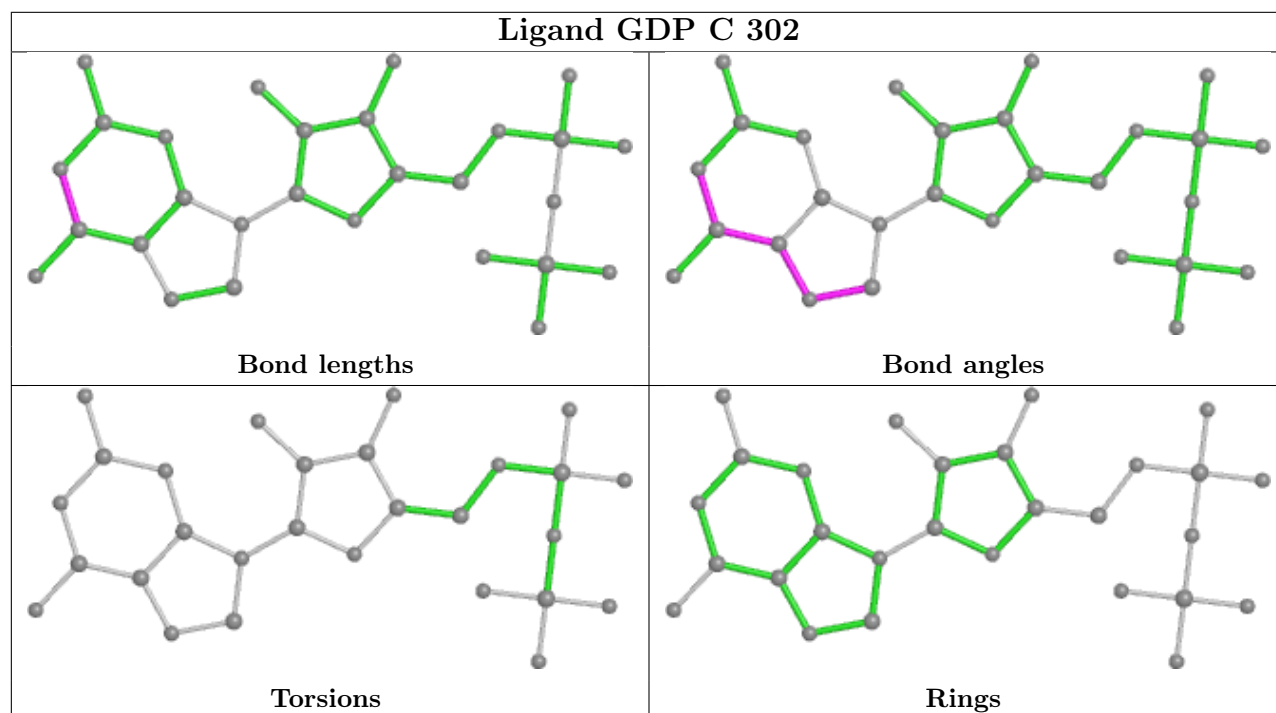
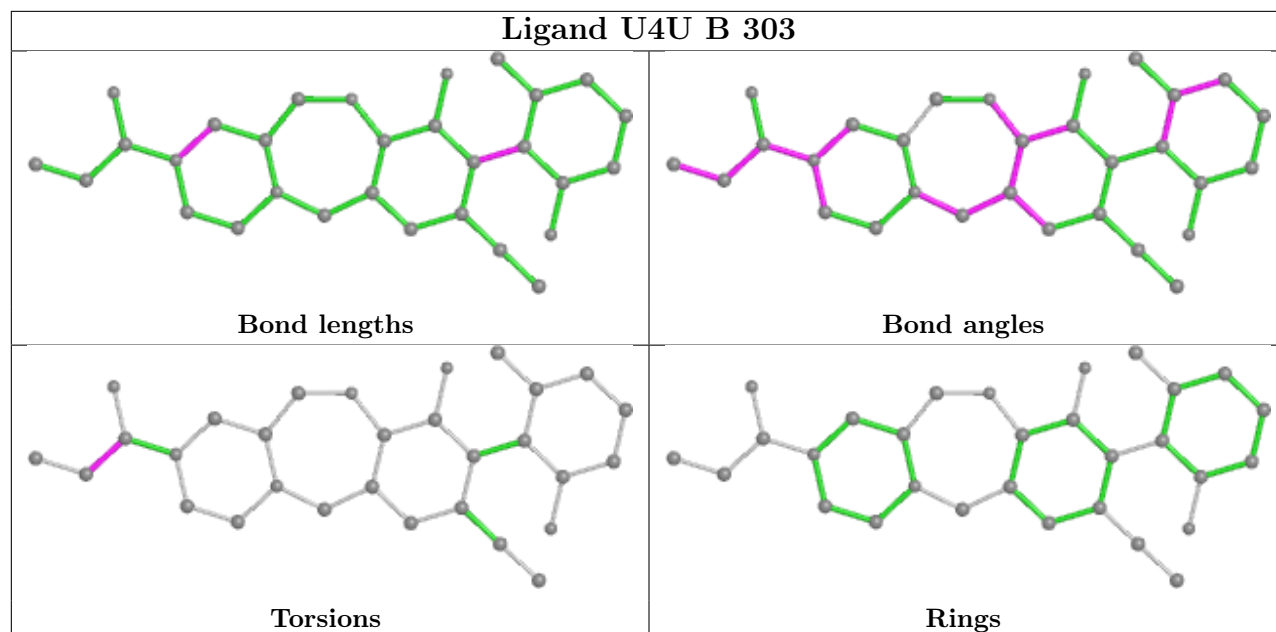
Mol	Chain	Res	Type	Clashes	Symm-Clashes
4	C	303	U4U	2	0

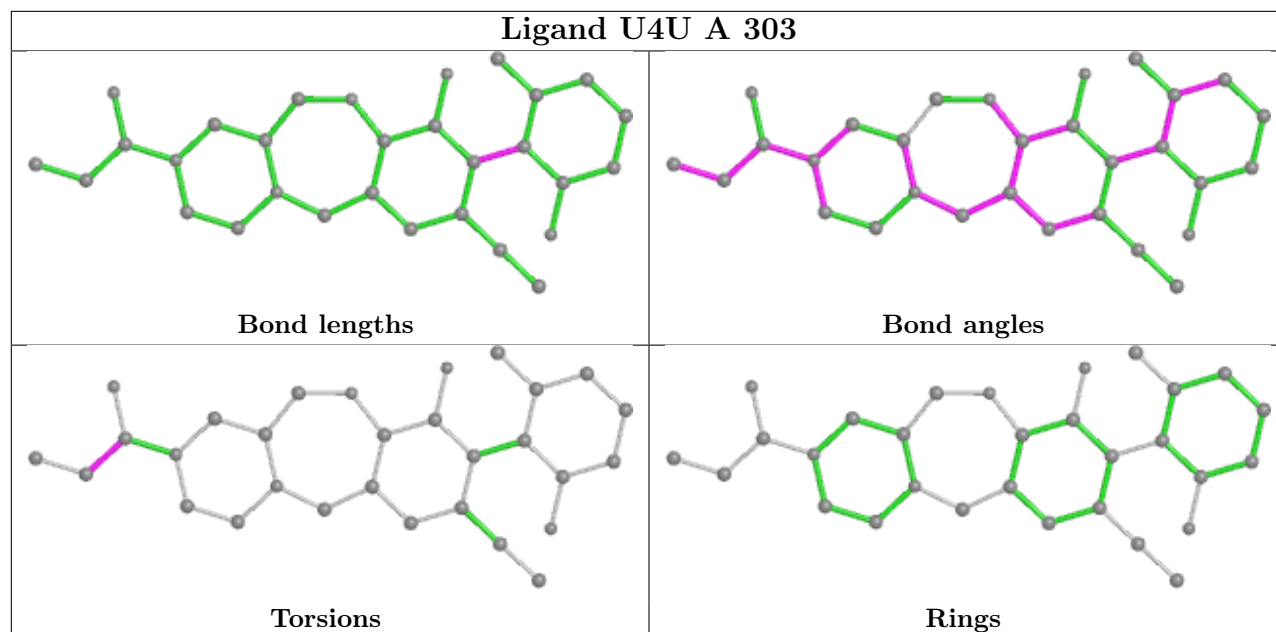
The following is a two-dimensional graphical depiction of Mogul quality analysis of bond lengths, bond angles, torsion angles, and ring geometry for all instances of the Ligand of Interest. In addition, ligands with molecular weight > 250 and outliers as shown on the validation Tables will also be included. For torsion angles, if less than 5% of the Mogul distribution of torsion angles is within 10 degrees of the torsion angle in question, then that torsion angle is considered an outlier. Any bond that is central to one or more torsion angles identified as an outlier by Mogul will be highlighted in the graph. For rings, the root-mean-square deviation (RMSD) between the ring in question and similar rings identified by Mogul is calculated over all ring torsion angles. If the average RMSD is greater than 60 degrees and the minimal RMSD between the ring in question and any Mogul-identified rings is also greater than 60 degrees, then that ring is considered an outlier. The outliers are highlighted in purple. The color gray indicates Mogul did not find sufficient equivalents in the CSD to analyse the geometry.











## 5.7 Other polymers [i](#)

There are no such residues in this entry.

## 5.8 Polymer linkage issues [i](#)

There are no chain breaks in this entry.

## 6 Fit of model and data

### 6.1 Protein, DNA and RNA chains

In the following table, the column labelled ‘#RSRZ> 2’ contains the number (and percentage) of RSRZ outliers, followed by percent RSRZ outliers for the chain as percentile scores relative to all X-ray entries and entries of similar resolution. The OWAB column contains the minimum, median, 95<sup>th</sup> percentile and maximum values of the occupancy-weighted average B-factor per residue. The column labelled ‘Q< 0.9’ lists the number of (and percentage) of residues with an average occupancy less than 0.9.

Mol	Chain	Analysed	<RSRZ>	#RSRZ>2	OWAB(Å <sup>2</sup> )	Q<0.9
1	A	170/184 (92%)	0.43	6 (3%) 44 38	13, 22, 39, 62	0
1	B	168/184 (91%)	0.46	6 (3%) 42 37	14, 23, 45, 54	0
1	C	168/184 (91%)	0.67	12 (7%) 16 12	17, 31, 57, 67	0
All	All	506/552 (91%)	0.52	24 (4%) 31 25	13, 25, 48, 67	0

All (24) RSRZ outliers are listed below:

Mol	Chain	Res	Type	RSRZ
1	C	107	GLU	4.7
1	C	64	TYR	3.9
1	C	71	TYR	3.7
1	B	108	ASP	3.4
1	B	30	ASP	3.3
1	C	67	MET	3.3
1	A	168	GLU	3.1
1	C	166	HIS	3.0
1	C	137	TYR	3.0
1	C	106	SER	2.9
1	A	107	GLU	2.5
1	C	105	ASP	2.5
1	A	132	ASP	2.5
1	C	126	ASP	2.5
1	B	107	GLU	2.4
1	B	47	ASP	2.4
1	B	0	SER	2.3
1	A	48	GLY	2.3
1	C	61	GLN	2.2
1	C	108	ASP	2.1
1	A	128	LYS	2.1
1	A	154	ASP	2.0
1	B	52	LEU	2.0

*Continued on next page...*

*Continued from previous page...*

Mol	Chain	Res	Type	RSRZ
1	C	91	GLU	2.0

## 6.2 Non-standard residues in protein, DNA, RNA chains [i](#)

There are no non-standard protein/DNA/RNA residues in this entry.

## 6.3 Carbohydrates [i](#)

There are no monosaccharides in this entry.

## 6.4 Ligands [i](#)

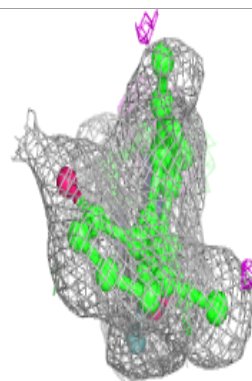
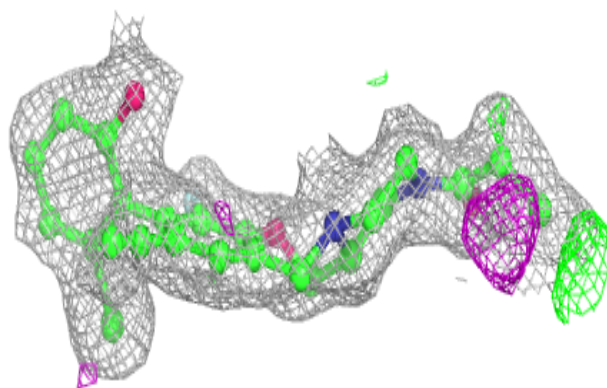
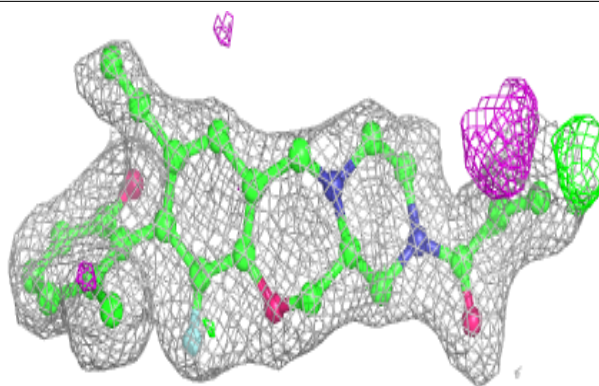
In the following table, the Atoms column lists the number of modelled atoms in the group and the number defined in the chemical component dictionary. The B-factors column lists the minimum, median, 95<sup>th</sup> percentile and maximum values of B factors of atoms in the group. The column labelled 'Q< 0.9' lists the number of atoms with occupancy less than 0.9.

Mol	Type	Chain	Res	Atoms	RSCC	RSR	B-factors(Å <sup>2</sup> )	Q<0.9
4	U4U	C	303	30/30	0.83	0.14	30,34,36,37	0
4	U4U	A	303	30/30	0.90	0.12	19,22,26,26	0
4	U4U	B	303	30/30	0.91	0.11	18,20,21,22	0
3	GDP	C	302	28/28	0.96	0.10	16,19,20,21	0
3	GDP	B	302	28/28	0.96	0.09	14,15,15,16	0
3	GDP	A	302	28/28	0.97	0.10	13,14,15,15	0
2	MG	C	301	1/1	0.97	0.10	17,17,17,17	0
2	MG	B	301	1/1	0.99	0.10	13,13,13,13	0
2	MG	A	301	1/1	0.99	0.09	13,13,13,13	0

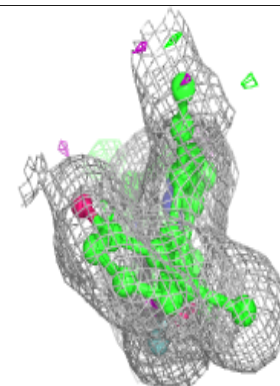
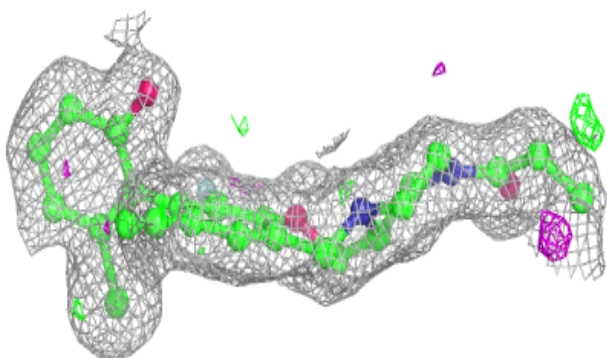
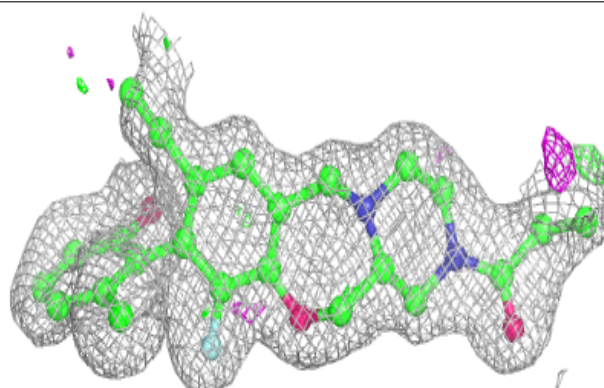
The following is a graphical depiction of the model fit to experimental electron density of all instances of the Ligand of Interest. In addition, ligands with molecular weight > 250 and outliers as shown on the geometry validation Tables will also be included. Each fit is shown from different orientation to approximate a three-dimensional view.

**Electron density around U4U C 303:**

$2mF_o-DF_c$  (at 0.7 rmsd) in gray  
 $mF_o-DF_c$  (at 3 rmsd) in purple (negative)  
and green (positive)

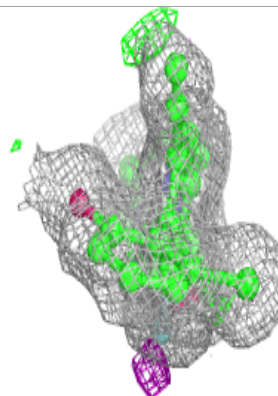
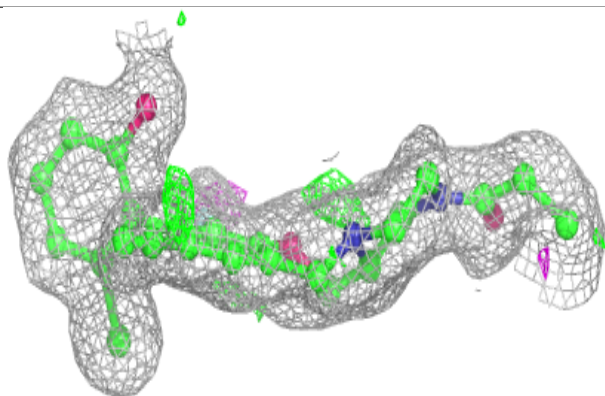
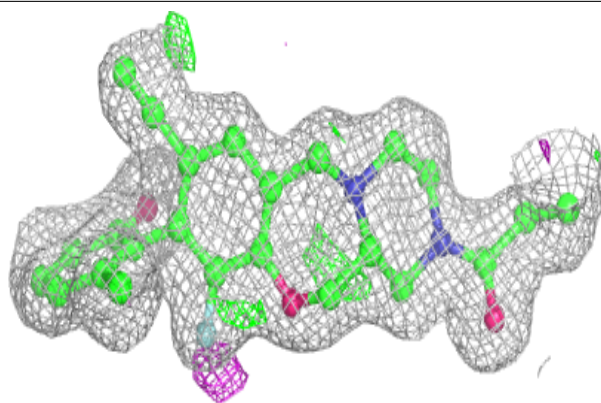
**Electron density around U4U A 303:**

$2mF_o-DF_c$  (at 0.7 rmsd) in gray  
 $mF_o-DF_c$  (at 3 rmsd) in purple (negative)  
and green (positive)

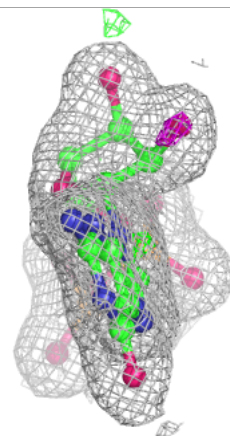
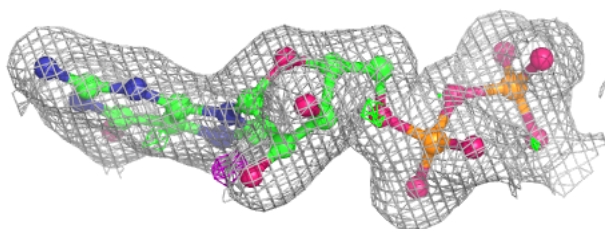
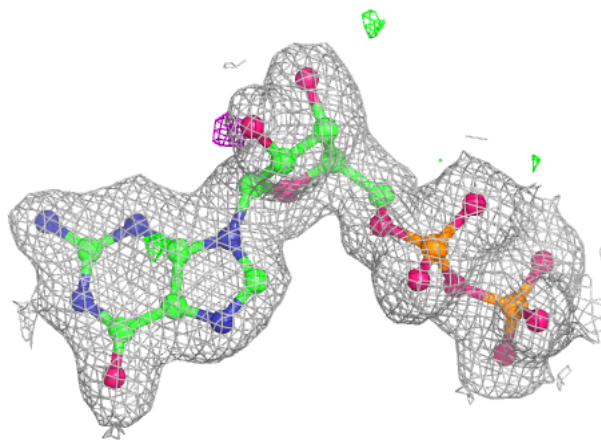


**Electron density around U4U B 303:**

$2mF_o-DF_c$  (at 0.7 rmsd) in gray  
 $mF_o-DF_c$  (at 3 rmsd) in purple (negative)  
and green (positive)

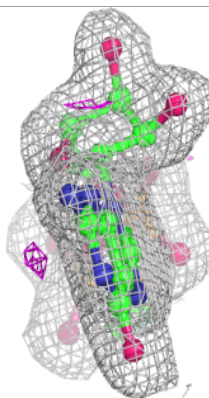
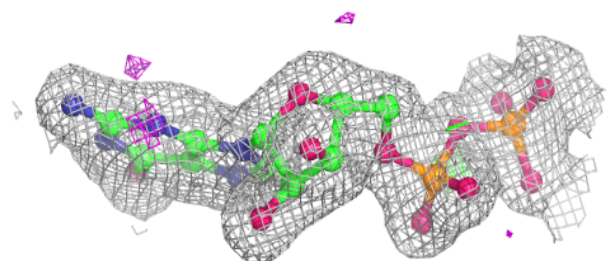
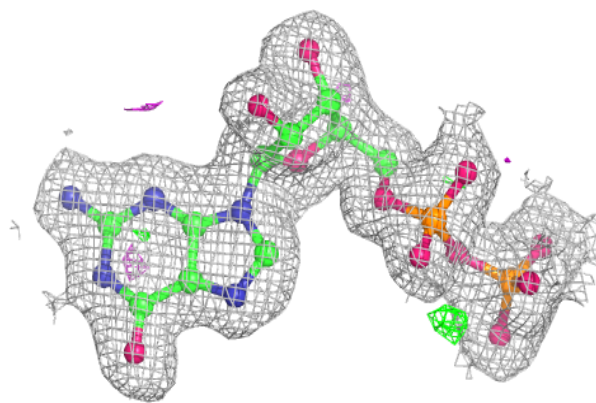
**Electron density around GDP C 302:**

$2mF_o-DF_c$  (at 0.7 rmsd) in gray  
 $mF_o-DF_c$  (at 3 rmsd) in purple (negative)  
and green (positive)

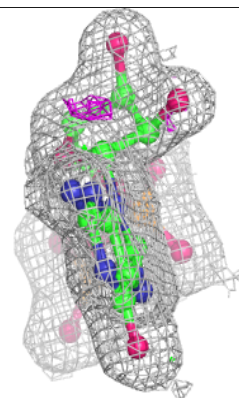
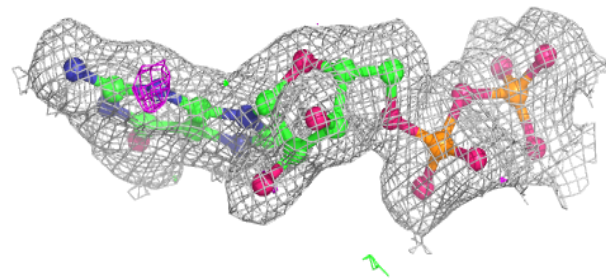
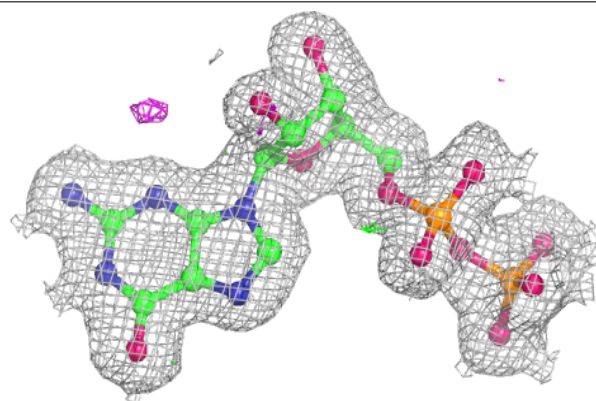


**Electron density around GDP B 302:**

$2mF_o-DF_c$  (at 0.7 rmsd) in gray  
 $mF_o-DF_c$  (at 3 rmsd) in purple (negative)  
and green (positive)

**Electron density around GDP A 302:**

$2mF_o-DF_c$  (at 0.7 rmsd) in gray  
 $mF_o-DF_c$  (at 3 rmsd) in purple (negative)  
and green (positive)



## 6.5 Other polymers [i](#)

There are no such residues in this entry.