



Full wwPDB EM Validation Report ⓘ

Oct 13, 2024 – 02:33 pm BST

PDB ID : 8C8L
EMDB ID : EMD-16483
Title : In vitro structure of the Nitrosopumilus maritimus S-layer - Two-fold symmetry (C2)
Authors : von Kuegelgen, A.; Bharat, T.
Deposited on : 2023-01-20
Resolution : 2.71 Å(reported)

This is a Full wwPDB EM Validation Report for a publicly released PDB entry.

We welcome your comments at validation@mail.wwpdb.org

A user guide is available at

<https://www.wwpdb.org/validation/2017/EMValidationReportHelp>

with specific help available everywhere you see the ⓘ symbol.

The types of validation reports are described at

<http://www.wwpdb.org/validation/2017/FAQs#types>.

The following versions of software and data (see [references ⓘ](#)) were used in the production of this report:

EMDB validation analysis : 0.0.1.dev113
MolProbity : 4.02b-467
Percentile statistics : 20231227.v01 (using entries in the PDB archive December 27th 2023)
MapQ : 1.9.13
Ideal geometry (proteins) : Engh & Huber (2001)
Ideal geometry (DNA, RNA) : Parkinson et al. (1996)
Validation Pipeline (wwPDB-VP) : 2.39

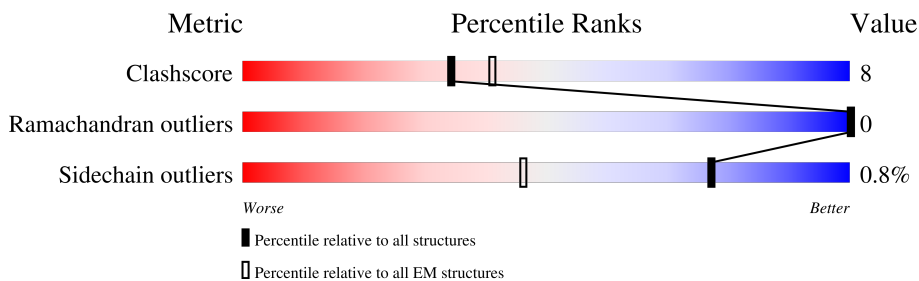
1 Overall quality at a glance

The following experimental techniques were used to determine the structure:

ELECTRON MICROSCOPY

The reported resolution of this entry is 2.71 Å.

Percentile scores (ranging between 0-100) for global validation metrics of the entry are shown in the following graphic. The table shows the number of entries on which the scores are based.



Metric	Whole archive (#Entries)	EM structures (#Entries)
Clashscore	210492	15764
Ramachandran outliers	207382	16835
Sidechain outliers	206894	16415

The table below summarises the geometric issues observed across the polymeric chains and their fit to the map. The red, orange, yellow and green segments of the bar indicate the fraction of residues that contain outliers for ≥ 3 , 2, 1 and 0 types of geometric quality criteria respectively. A grey segment represents the fraction of residues that are not modelled. The numeric value for each fraction is indicated below the corresponding segment, with a dot representing fractions $\leq 5\%$. The upper red bar (where present) indicates the fraction of residues that have poor fit to the EM map (all-atom inclusion $< 40\%$). The numeric value is given above the bar.

Mol	Chain	Length	Quality of chain
1	A	1734	
1	B	1734	
1	C	1734	
1	D	1734	
1	E	1734	
1	F	1734	

2 Entry composition

There is only 1 type of molecule in this entry. The entry contains 59076 atoms, of which 0 are hydrogens and 0 are deuteriums.

In the tables below, the AltConf column contains the number of residues with at least one atom in alternate conformation and the Trace column contains the number of residues modelled with at most 2 atoms.

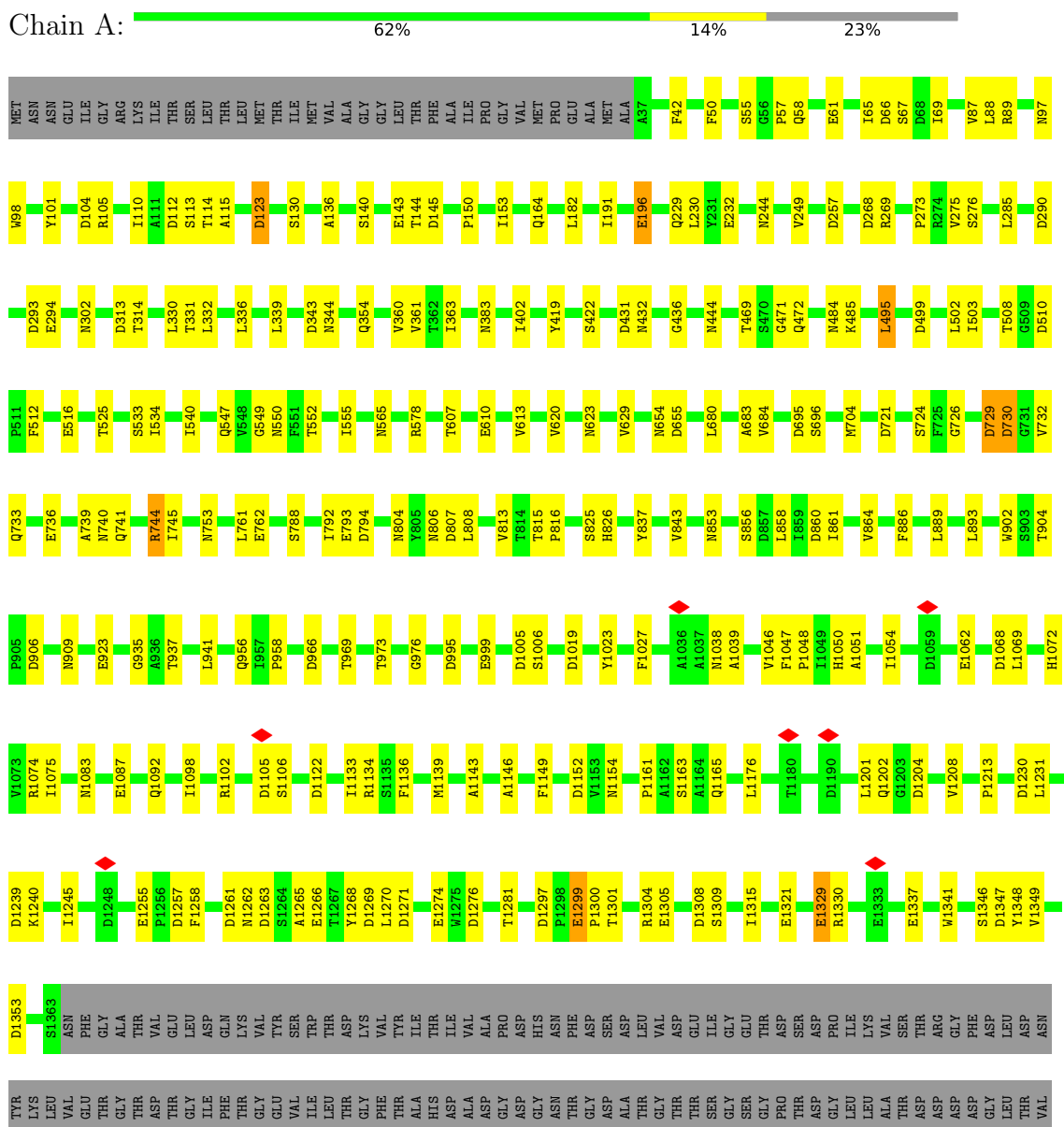
- Molecule 1 is a protein called Cell surface protein.

Mol	Chain	Residues	Atoms					AltConf	Trace
			Total	C	N	O	S		
1	A	1327	9846	6055	1595	2178	18	0	0
1	B	1327	9846	6055	1595	2178	18	0	0
1	C	1327	9846	6055	1595	2178	18	0	0
1	D	1327	9846	6055	1595	2178	18	0	0
1	E	1327	9846	6055	1595	2178	18	0	0
1	F	1327	9846	6055	1595	2178	18	0	0

3 Residue-property plots

These plots are drawn for all protein, RNA, DNA and oligosaccharide chains in the entry. The first graphic for a chain summarises the proportions of the various outlier classes displayed in the second graphic. The second graphic shows the sequence view annotated by issues in geometry and atom inclusion in map density. Residues are color-coded according to the number of geometric quality criteria for which they contain at least one outlier: green = 0, yellow = 1, orange = 2 and red = 3 or more. A red diamond above a residue indicates a poor fit to the EM map for this residue (all-atom inclusion < 40%). Stretches of 2 or more consecutive residues without any outlier are shown as a green connector. Residues present in the sample, but not in the model, are shown in grey.

● Molecule 1: Cell surface protein



PRO
TYR
THR
THR
ALA
ASP
GLU
LEU
ASP
ILE
THR
THR
ALA
THR
SER
SER
LEU
ILE
GLY
THR
VAL
VAL
VAL
PRO
PRO
LEU
ALA
LEU
GLU
TRP
GLY
ALA
ALA
PRO
ALA
ALA
SER
LEU
ASN
SER
SER
LEU
ARG
THR
VAL
THR
VAL
VAL

ASP
ARG
GLU
GLN
THR
SER
PHE
ALA
TYR
TYR
LEU
VAL
SER
ILE
GLN
THR
ILE
GLN
THR
ASP
ASP
ALA
ALA
ASN
ASN
GLY
VAL
THR
THR
VAL
VAL
SER
SER
LEU
ALA
ALA
TRP
TRP
LEU
SER
SER
LEU
GLY
GLN
THR
SER
PHE
ASP
SER
SER
PRO
PHE
GLY
ALA
LEU
SER
SER
TRP
ILE
ILE
SER
SER
THR
THR
GLU
SER
ALA
GLY
GLY
ASP
THR
THR
TYR
GLN
VAL
VAL
GLN
GLN
THR
THR
ALA
PHE
SER
SER
VAL
PHE
ALA
ALA
SER
SER
THR
THR
TRP
TRP
LEU
GLU
SER
SER
VAL
VAL
ASP
ASP
GLN

ASN
PRO
THR
ALA
LEU
SER
SER
PRO
PRO
VAL
VAL
SER
SER
THR
THR
VAL
VAL
ASN
ASN
VAL
VAL
SER

4 Experimental information

Property	Value	Source
EM reconstruction method	SINGLE PARTICLE	Depositor
Imposed symmetry	POINT, C2	Depositor
Number of particles used	354860	Depositor
Resolution determination method	FSC 0.143 CUT-OFF	Depositor
CTF correction method	PHASE FLIPPING AND AMPLITUDE CORRECTION; RELION refinement with in-built CTF correction. The function is similar to a Wiener filter, so amplitude correction included.	Depositor
Microscope	FEI TITAN KRIOS	Depositor
Voltage (kV)	300	Depositor
Electron dose ($e^-/\text{\AA}^2$)	48.5	Depositor
Minimum defocus (nm)	2000	Depositor
Maximum defocus (nm)	5000	Depositor
Magnification	81000	Depositor
Image detector	GATAN K3 BIOQUANTUM (6k x 4k)	Depositor
Maximum map value	0.109	Depositor
Minimum map value	-0.059	Depositor
Average map value	0.000	Depositor
Map value standard deviation	0.006	Depositor
Recommended contour level	0.01471	Depositor
Map size (Å)	349.44, 349.44, 349.44	wwPDB
Map dimensions	320, 320, 320	wwPDB
Map angles (°)	90.0, 90.0, 90.0	wwPDB
Pixel spacing (Å)	1.092, 1.092, 1.092	Depositor

5 Model quality i

5.1 Standard geometry i

The Z score for a bond length (or angle) is the number of standard deviations the observed value is removed from the expected value. A bond length (or angle) with $|Z| > 5$ is considered an outlier worth inspection. RMSZ is the root-mean-square of all Z scores of the bond lengths (or angles).

Mol	Chain	Bond lengths		Bond angles	
		RMSZ	# Z >5	RMSZ	# Z >5
1	A	0.77	8/10000 (0.1%)	0.82	17/13678 (0.1%)
1	B	0.70	2/10000 (0.0%)	0.78	7/13678 (0.1%)
1	C	0.70	2/10000 (0.0%)	0.78	6/13678 (0.0%)
1	D	0.69	1/10000 (0.0%)	0.77	6/13678 (0.0%)
1	E	0.70	2/10000 (0.0%)	0.78	7/13678 (0.1%)
1	F	0.70	2/10000 (0.0%)	0.78	5/13678 (0.0%)
All	All	0.71	17/60000 (0.0%)	0.78	48/82068 (0.1%)

Chiral center outliers are detected by calculating the chiral volume of a chiral center and verifying if the center is modelled as a planar moiety or with the opposite hand. A planarity outlier is detected by checking planarity of atoms in a peptide group, atoms in a mainchain group or atoms of a sidechain that are expected to be planar.

Mol	Chain	#Chirality outliers	#Planarity outliers
1	A	0	2
1	B	0	1
All	All	0	3

All (17) bond length outliers are listed below:

Mol	Chain	Res	Type	Atoms	Z	Observed(Å)	Ideal(Å)
1	A	793	GLU	CD-OE2	16.03	1.43	1.25
1	A	1255	GLU	CD-OE1	-15.38	1.08	1.25
1	A	793	GLU	CD-OE1	-13.35	1.10	1.25
1	A	196	GLU	CD-OE1	-10.86	1.13	1.25
1	A	1299	GLU	CD-OE1	-9.95	1.14	1.25
1	F	858	LEU	C-O	-8.47	1.07	1.23
1	C	858	LEU	C-O	-8.44	1.07	1.23
1	D	858	LEU	C-O	-7.86	1.08	1.23
1	A	858	LEU	C-O	-7.75	1.08	1.23
1	B	858	LEU	C-O	-7.45	1.09	1.23
1	E	858	LEU	C-O	-7.41	1.09	1.23
1	C	808	LEU	C-O	-5.62	1.12	1.23

Continued on next page...

Continued from previous page...

Mol	Chain	Res	Type	Atoms	Z	Observed(Å)	Ideal(Å)
1	F	808	LEU	C-O	-5.55	1.12	1.23
1	A	1329	GLU	CD-OE2	-5.38	1.19	1.25
1	E	808	LEU	C-O	-5.12	1.13	1.23
1	B	808	LEU	C-O	-5.07	1.13	1.23
1	A	1299	GLU	CD-OE2	-5.04	1.20	1.25

All (48) bond angle outliers are listed below:

Mol	Chain	Res	Type	Atoms	Z	Observed(°)	Ideal(°)
1	A	729	ASP	CB-CG-OD1	15.40	132.16	118.30
1	A	123	ASP	CB-CG-OD1	11.60	128.74	118.30
1	A	794	ASP	CB-CG-OD2	10.58	127.82	118.30
1	A	729	ASP	CB-CG-OD2	-9.00	110.20	118.30
1	E	1257	ASP	CB-CG-OD1	-8.15	110.96	118.30
1	A	793	GLU	CG-CD-OE2	8.12	134.55	118.30
1	B	1257	ASP	CB-CG-OD1	-8.12	110.99	118.30
1	A	729	ASP	CA-CB-CG	7.90	130.77	113.40
1	D	1257	ASP	CB-CG-OD1	-7.82	111.27	118.30
1	F	1257	ASP	CB-CG-OD1	-7.71	111.36	118.30
1	A	794	ASP	CB-CG-OD1	-7.66	111.41	118.30
1	D	58	GLN	CB-CA-C	-7.20	96.00	110.40
1	A	58	GLN	CB-CA-C	-7.18	96.03	110.40
1	C	58	GLN	CB-CA-C	-7.10	96.20	110.40
1	F	38	ASN	CB-CA-C	6.91	124.22	110.40
1	B	58	GLN	CB-CA-C	-6.70	97.01	110.40
1	E	58	GLN	CB-CA-C	-6.31	97.78	110.40
1	A	793	GLU	CG-CD-OE1	-6.26	105.78	118.30
1	D	1340	ASP	CB-CG-OD2	-6.24	112.69	118.30
1	A	1299	GLU	OE1-CD-OE2	-6.20	115.86	123.30
1	A	1255	GLU	OE1-CD-OE2	-6.10	115.98	123.30
1	C	1257	ASP	CB-CG-OD1	-6.05	112.86	118.30
1	E	1340	ASP	CB-CG-OD2	-6.02	112.88	118.30
1	B	1340	ASP	CB-CG-OD2	-5.97	112.93	118.30
1	A	1257	ASP	CB-CG-OD2	5.93	123.64	118.30
1	A	730	ASP	CB-CG-OD2	5.86	123.58	118.30
1	B	744	ARG	NE-CZ-NH1	5.85	123.22	120.30
1	C	1340	ASP	CB-CG-OD2	-5.85	113.04	118.30
1	A	729	ASP	OD1-CG-OD2	-5.75	112.38	123.30
1	F	1340	ASP	CB-CG-OD2	-5.68	113.19	118.30
1	E	744	ARG	NE-CZ-NH1	5.68	123.14	120.30
1	A	510	ASP	CB-CG-OD2	5.54	123.28	118.30
1	B	730	ASP	CB-CG-OD2	5.30	123.07	118.30

Continued on next page...

Continued from previous page...

Mol	Chain	Res	Type	Atoms	Z	Observed(°)	Ideal(°)
1	C	550	ASN	CB-CA-C	5.21	120.83	110.40
1	F	550	ASN	CB-CA-C	5.21	120.82	110.40
1	E	730	ASP	CB-CG-OD2	5.18	122.97	118.30
1	D	550	ASN	CB-CA-C	5.17	120.73	110.40
1	A	550	ASN	CB-CA-C	5.16	120.71	110.40
1	A	744	ARG	NE-CZ-NH1	5.11	122.86	120.30
1	B	550	ASN	CB-CA-C	5.11	120.62	110.40
1	E	123	ASP	CB-CG-OD1	5.11	122.89	118.30
1	E	550	ASN	CB-CA-C	5.10	120.60	110.40
1	D	744	ARG	NE-CZ-NH1	5.08	122.84	120.30
1	D	730	ASP	CB-CG-OD2	5.07	122.86	118.30
1	C	123	ASP	CB-CG-OD1	5.05	122.85	118.30
1	F	123	ASP	CB-CG-OD1	5.03	122.83	118.30
1	C	730	ASP	CB-CG-OD2	5.01	122.81	118.30
1	B	123	ASP	CB-CG-OD1	5.01	122.81	118.30

There are no chirality outliers.

All (3) planarity outliers are listed below:

Mol	Chain	Res	Type	Group
1	A	196	GLU	Sidechain
1	A	729	ASP	Sidechain
1	B	55	SER	Mainchain

5.2 Too-close contacts [i](#)

In the following table, the Non-H and H(model) columns list the number of non-hydrogen atoms and hydrogen atoms in the chain respectively. The H(added) column lists the number of hydrogen atoms added and optimized by MolProbity. The Clashes column lists the number of clashes within the asymmetric unit, whereas Symm-Clashes lists symmetry-related clashes.

Mol	Chain	Non-H	H(model)	H(added)	Clashes	Symm-Clashes
1	A	9846	0	9212	159	0
1	B	9846	0	9212	172	0
1	C	9846	0	9212	174	0
1	D	9846	0	9212	159	0
1	E	9846	0	9212	172	0
1	F	9846	0	9212	171	0
All	All	59076	0	55272	907	0

The all-atom clashscore is defined as the number of clashes found per 1000 atoms (including

hydrogen atoms). The all-atom clashscore for this structure is 8.

All (907) close contacts within the same asymmetric unit are listed below, sorted by their clash magnitude.

Atom-1	Atom-2	Interatomic distance (Å)	Clash overlap (Å)
1:C:816:PRO:HD2	1:D:1083:ASN:HD21	1.01	1.14
1:C:816:PRO:HD2	1:D:1083:ASN:ND2	1.72	1.03
1:C:816:PRO:CD	1:D:1083:ASN:HD21	1.75	1.00
1:D:57:PRO:HG3	1:D:339:LEU:HD22	1.54	0.90
1:C:57:PRO:HG3	1:C:339:LEU:HD22	1.53	0.90
1:C:886:PHE:O	1:D:1301:THR:HG21	1.71	0.90
1:A:57:PRO:HG3	1:A:339:LEU:HD22	1.54	0.90
1:B:57:PRO:HG3	1:B:339:LEU:HD22	1.54	0.90
1:A:1301:THR:HG21	1:F:886:PHE:O	1.72	0.89
1:E:57:PRO:HG3	1:E:339:LEU:HD22	1.54	0.88
1:D:886:PHE:O	1:E:1301:THR:HG21	1.76	0.86
1:A:886:PHE:O	1:B:1301:THR:HG21	1.76	0.84
1:C:1261:ASP:O	1:C:1266:GLU:OE2	1.98	0.82
1:F:1261:ASP:O	1:F:1266:GLU:OE2	1.98	0.82
1:A:1261:ASP:O	1:A:1266:GLU:OE2	1.99	0.81
1:B:1261:ASP:O	1:B:1266:GLU:OE2	1.99	0.81
1:E:1261:ASP:O	1:E:1266:GLU:OE2	1.99	0.81
1:C:1068:ASP:HB3	1:C:1154:ASN:HD21	1.46	0.80
1:F:1068:ASP:HB3	1:F:1154:ASN:HD21	1.46	0.80
1:B:363:ILE:HD13	1:B:402:ILE:HG23	1.64	0.80
1:D:1261:ASP:O	1:D:1266:GLU:OE2	1.98	0.80
1:C:363:ILE:HD13	1:C:402:ILE:HG23	1.63	0.80
1:E:1068:ASP:HB3	1:E:1154:ASN:HD21	1.47	0.80
1:B:234:ASN:CB	1:C:422:SER:HB3	2.12	0.79
1:F:363:ILE:HD13	1:F:402:ILE:HG23	1.63	0.79
1:D:1068:ASP:HB3	1:D:1154:ASN:HD21	1.48	0.79
1:B:1068:ASP:HB3	1:B:1154:ASN:HD21	1.47	0.79
1:E:363:ILE:HD13	1:E:402:ILE:HG23	1.63	0.79
1:E:234:ASN:CB	1:F:422:SER:HB3	2.13	0.78
1:A:1068:ASP:HB3	1:A:1154:ASN:HD21	1.48	0.78
1:A:363:ILE:HD13	1:A:402:ILE:HG23	1.65	0.77
1:D:363:ILE:HD13	1:D:402:ILE:HG23	1.65	0.77
1:A:956:GLN:NE2	1:F:813:VAL:HG11	2.01	0.76
1:B:449:THR:HG21	1:C:859:ILE:HB	1.68	0.75
1:E:449:THR:HG21	1:F:859:ILE:HB	1.68	0.75
1:B:886:PHE:O	1:C:1301:THR:HG21	1.88	0.74
1:E:886:PHE:O	1:F:1301:THR:HG21	1.86	0.74
1:F:1046:VAL:HG23	1:F:1048:PRO:HD3	1.71	0.73

Continued on next page...

Continued from previous page...

Atom-1	Atom-2	Interatomic distance (Å)	Clash overlap (Å)
1:A:815:THR:HG23	1:B:1083:ASN:OD1	1.89	0.73
1:C:813:VAL:HG11	1:D:956:GLN:NE2	2.03	0.73
1:D:825:SER:OG	1:D:995:ASP:O	2.07	0.73
1:F:825:SER:OG	1:F:995:ASP:O	2.06	0.73
1:C:816:PRO:CD	1:D:1083:ASN:ND2	2.41	0.72
1:C:825:SER:OG	1:C:995:ASP:O	2.06	0.72
1:C:1046:VAL:HG23	1:C:1048:PRO:HD3	1.71	0.72
1:D:815:THR:HG23	1:E:1083:ASN:OD1	1.89	0.72
1:E:825:SER:OG	1:E:995:ASP:O	2.07	0.72
1:A:1083:ASN:ND2	1:F:816:PRO:HD2	2.05	0.72
1:B:1046:VAL:HG23	1:B:1048:PRO:HD3	1.72	0.72
1:B:816:PRO:HD2	1:C:1083:ASN:ND2	2.05	0.72
1:B:825:SER:OG	1:B:995:ASP:O	2.07	0.71
1:A:825:SER:OG	1:A:995:ASP:O	2.07	0.71
1:E:816:PRO:HD2	1:F:1083:ASN:ND2	2.05	0.71
1:D:816:PRO:HD2	1:E:1083:ASN:ND2	2.06	0.71
1:D:1244:ILE:HA	1:D:1363:SER:OG	1.90	0.70
1:A:1046:VAL:HG23	1:A:1048:PRO:HD3	1.72	0.70
1:A:816:PRO:HD2	1:B:1083:ASN:ND2	2.06	0.70
1:A:1297:ASP:OD2	1:A:1299:GLU:OE2	2.09	0.69
1:E:1046:VAL:HG23	1:E:1048:PRO:HD3	1.72	0.69
1:B:435:ARG:NH1	1:C:937:THR:O	2.26	0.69
1:C:816:PRO:HG2	1:D:1083:ASN:ND2	2.07	0.69
1:D:1046:VAL:HG23	1:D:1048:PRO:HD3	1.72	0.69
1:E:435:ARG:NH1	1:F:937:THR:O	2.25	0.69
1:E:813:VAL:HG11	1:F:956:GLN:NE2	2.09	0.69
1:B:813:VAL:HG11	1:C:956:GLN:NE2	2.08	0.68
1:B:343:ASP:O	1:B:444:ASN:HA	1.94	0.68
1:D:1072:HIS:ND1	1:D:1152:ASP:OD1	2.27	0.68
1:E:721:ASP:OD2	1:E:744:ARG:NH2	2.27	0.68
1:B:721:ASP:OD2	1:B:744:ARG:NH2	2.27	0.68
1:E:343:ASP:O	1:E:444:ASN:HA	1.94	0.67
1:E:816:PRO:HD2	1:F:1083:ASN:HD21	1.60	0.67
1:D:721:ASP:OD2	1:D:744:ARG:NH2	2.27	0.67
1:E:1072:HIS:ND1	1:E:1152:ASP:OD1	2.28	0.66
1:A:1072:HIS:ND1	1:A:1152:ASP:OD1	2.27	0.66
1:F:721:ASP:OD2	1:F:744:ARG:NH2	2.28	0.66
1:F:1072:HIS:ND1	1:F:1152:ASP:OD1	2.28	0.66
1:B:84:ASN:HD22	1:C:421:GLU:CB	2.09	0.66
1:C:1072:HIS:ND1	1:C:1152:ASP:OD1	2.28	0.66
1:B:886:PHE:HA	1:C:1301:THR:HG21	1.77	0.66

Continued on next page...

Continued from previous page...

Atom-1	Atom-2	Interatomic distance (Å)	Clash overlap (Å)
1:A:343:ASP:O	1:A:444:ASN:HA	1.96	0.66
1:B:1072:HIS:ND1	1:B:1152:ASP:OD1	2.28	0.66
1:A:721:ASP:OD2	1:A:744:ARG:NH2	2.27	0.66
1:B:816:PRO:HD2	1:C:1083:ASN:HD21	1.60	0.65
1:B:923:GLU:OE1	1:B:976:GLY:O	2.15	0.65
1:C:721:ASP:OD2	1:C:744:ARG:NH2	2.28	0.65
1:C:923:GLU:OE1	1:C:976:GLY:O	2.15	0.65
1:E:886:PHE:HA	1:F:1301:THR:HG21	1.78	0.65
1:C:343:ASP:O	1:C:444:ASN:HA	1.96	0.65
1:C:864:VAL:HG11	1:C:935:GLY:HA2	1.79	0.65
1:F:343:ASP:O	1:F:444:ASN:HA	1.96	0.65
1:F:923:GLU:OE1	1:F:976:GLY:O	2.15	0.65
1:A:923:GLU:OE1	1:A:976:GLY:O	2.15	0.65
1:E:84:ASN:HD22	1:F:421:GLU:CB	2.09	0.65
1:D:105:ARG:HA	1:D:230:LEU:HD12	1.78	0.65
1:E:923:GLU:OE1	1:E:976:GLY:O	2.15	0.65
1:A:105:ARG:HA	1:A:230:LEU:HD12	1.78	0.65
1:F:864:VAL:HG11	1:F:935:GLY:HA2	1.79	0.65
1:A:275:VAL:HG12	1:A:275:VAL:O	1.97	0.65
1:B:105:ARG:HA	1:B:230:LEU:HD12	1.79	0.65
1:B:275:VAL:HG12	1:B:275:VAL:O	1.97	0.64
1:D:275:VAL:HG12	1:D:275:VAL:O	1.97	0.64
1:D:343:ASP:O	1:D:444:ASN:HA	1.96	0.64
1:D:923:GLU:OE1	1:D:976:GLY:O	2.15	0.64
1:C:105:ARG:HA	1:C:230:LEU:HD12	1.80	0.64
1:E:105:ARG:HA	1:E:230:LEU:HD12	1.80	0.64
1:E:275:VAL:O	1:E:275:VAL:HG12	1.97	0.63
1:A:145:ASP:OD2	1:A:232:GLU:N	2.31	0.63
1:E:145:ASP:OD2	1:E:232:GLU:N	2.32	0.63
1:F:909:ASN:HB3	1:F:973:THR:HG22	1.81	0.63
1:A:813:VAL:HG11	1:B:956:GLN:NE2	2.14	0.63
1:A:864:VAL:HG11	1:A:935:GLY:HA2	1.80	0.63
1:C:495:LEU:HD12	1:C:503:ILE:HD13	1.81	0.63
1:B:86:LYS:HG2	1:C:322:ASN:HB2	1.80	0.63
1:B:909:ASN:HB3	1:B:973:THR:HG22	1.81	0.63
1:B:864:VAL:HG11	1:B:935:GLY:HA2	1.81	0.63
1:C:275:VAL:HG12	1:C:275:VAL:O	1.99	0.63
1:D:864:VAL:HG11	1:D:935:GLY:HA2	1.80	0.63
1:C:909:ASN:HB3	1:C:973:THR:HG22	1.81	0.63
1:E:864:VAL:HG11	1:E:935:GLY:HA2	1.81	0.63
1:E:86:LYS:HG2	1:F:322:ASN:HB2	1.80	0.62

Continued on next page...

Continued from previous page...

Atom-1	Atom-2	Interatomic distance (Å)	Clash overlap (Å)
1:D:613:VAL:HG22	1:D:623:ASN:HD21	1.64	0.62
1:F:275:VAL:HG12	1:F:275:VAL:O	1.99	0.62
1:A:909:ASN:HB3	1:A:973:THR:HG22	1.81	0.62
1:D:813:VAL:HG11	1:E:956:GLN:NE2	2.14	0.62
1:F:105:ARG:HA	1:F:230:LEU:HD12	1.80	0.62
1:C:816:PRO:CG	1:D:1083:ASN:ND2	2.62	0.62
1:A:1083:ASN:OD1	1:F:815:THR:HG23	1.99	0.62
1:A:613:VAL:HG22	1:A:623:ASN:HD21	1.64	0.61
1:B:145:ASP:OD2	1:B:232:GLU:N	2.32	0.61
1:D:495:LEU:HD12	1:D:503:ILE:HD13	1.81	0.61
1:D:1330:ARG:HB3	1:D:1363:SER:O	1.99	0.61
1:E:234:ASN:HB2	1:F:422:SER:HB3	1.83	0.61
1:E:909:ASN:HB3	1:E:973:THR:HG22	1.81	0.61
1:A:495:LEU:HD12	1:A:503:ILE:HD13	1.81	0.61
1:F:613:VAL:HG22	1:F:623:ASN:HD21	1.66	0.61
1:F:495:LEU:HD12	1:F:503:ILE:HD13	1.81	0.61
1:D:909:ASN:HB3	1:D:973:THR:HG22	1.81	0.61
1:F:1341:TRP:CZ3	1:F:1353:ASP:HB3	2.36	0.61
1:B:1341:TRP:CZ3	1:B:1353:ASP:HB3	2.36	0.60
1:D:145:ASP:OD2	1:D:232:GLU:N	2.31	0.60
1:E:613:VAL:HG22	1:E:623:ASN:HD21	1.66	0.60
1:B:495:LEU:HD12	1:B:503:ILE:HD13	1.83	0.60
1:C:145:ASP:OD2	1:C:232:GLU:N	2.32	0.60
1:E:1341:TRP:CZ3	1:E:1353:ASP:HB3	2.36	0.60
1:A:1341:TRP:CZ3	1:A:1353:ASP:HB3	2.36	0.60
1:C:1341:TRP:CZ3	1:C:1353:ASP:HB3	2.36	0.60
1:C:613:VAL:HG22	1:C:623:ASN:HD21	1.66	0.60
1:E:495:LEU:HD12	1:E:503:ILE:HD13	1.83	0.60
1:D:1341:TRP:CZ3	1:D:1353:ASP:HB3	2.36	0.60
1:B:234:ASN:HB2	1:C:422:SER:HB3	1.83	0.60
1:B:87:VAL:HG12	1:B:143:GLU:HB2	1.84	0.60
1:F:145:ASP:OD2	1:F:232:GLU:N	2.31	0.59
1:F:1269:ASP:OD2	1:F:1271:ASP:OD2	2.21	0.59
1:B:613:VAL:HG22	1:B:623:ASN:HD21	1.67	0.59
1:E:1269:ASP:OD2	1:E:1271:ASP:OD2	2.21	0.59
1:A:1269:ASP:OD2	1:A:1271:ASP:OD2	2.21	0.59
1:B:1269:ASP:OD2	1:B:1271:ASP:OD2	2.21	0.59
1:D:1269:ASP:OD2	1:D:1271:ASP:OD2	2.21	0.58
1:E:87:VAL:HG12	1:E:143:GLU:HB2	1.84	0.58
1:B:739:ALA:HB2	1:B:792:ILE:CG1	2.34	0.58
1:C:1201:LEU:HD12	1:C:1347:ASP:HB3	1.86	0.58

Continued on next page...

Continued from previous page...

Atom-1	Atom-2	Interatomic distance (Å)	Clash overlap (Å)
1:C:1269:ASP:OD2	1:C:1271:ASP:OD2	2.21	0.58
1:B:1102:ARG:NH2	1:B:1161:PRO:O	2.37	0.58
1:F:1102:ARG:NH2	1:F:1161:PRO:O	2.37	0.58
1:F:1201:LEU:HD12	1:F:1347:ASP:HB3	1.85	0.58
1:A:1102:ARG:NH2	1:A:1161:PRO:O	2.37	0.58
1:C:302:ASN:HB2	1:C:402:ILE:HD12	1.86	0.58
1:F:302:ASN:HB2	1:F:402:ILE:HD12	1.86	0.58
1:B:540:ILE:HA	1:B:547:GLN:OE1	2.04	0.58
1:D:540:ILE:HA	1:D:547:GLN:OE1	2.04	0.58
1:A:540:ILE:HA	1:A:547:GLN:OE1	2.04	0.57
1:B:1201:LEU:HD12	1:B:1347:ASP:HB3	1.86	0.57
1:E:77:GLY:H	1:F:94:VAL:HG21	1.69	0.57
1:F:1019:ASP:OD1	1:F:1262:ASN:ND2	2.37	0.57
1:E:1102:ARG:NH2	1:E:1161:PRO:O	2.37	0.57
1:F:540:ILE:HA	1:F:547:GLN:OE1	2.04	0.57
1:D:302:ASN:HB2	1:D:402:ILE:HD12	1.85	0.57
1:E:1201:LEU:HD12	1:E:1347:ASP:HB3	1.86	0.57
1:C:1102:ARG:NH2	1:C:1161:PRO:O	2.37	0.57
1:C:739:ALA:HB2	1:C:792:ILE:CG1	2.35	0.57
1:A:302:ASN:HB2	1:A:402:ILE:HD12	1.85	0.57
1:A:816:PRO:HD2	1:B:1083:ASN:HD21	1.69	0.57
1:C:1019:ASP:OD1	1:C:1262:ASN:ND2	2.37	0.57
1:E:302:ASN:HB2	1:E:402:ILE:HD12	1.87	0.57
1:F:279:HIS:CE1	1:F:488:ARG:HD3	2.40	0.57
1:F:1092:GLN:HG2	1:F:1213:PRO:HG3	1.87	0.57
1:A:1019:ASP:OD1	1:A:1262:ASN:ND2	2.38	0.57
1:A:1201:LEU:HD12	1:A:1347:ASP:HB3	1.86	0.57
1:D:1102:ARG:NH2	1:D:1161:PRO:O	2.37	0.57
1:A:739:ALA:HB2	1:A:792:ILE:CG1	2.35	0.56
1:B:1019:ASP:OD1	1:B:1262:ASN:ND2	2.38	0.56
1:E:540:ILE:HA	1:E:547:GLN:OE1	2.04	0.56
1:B:77:GLY:H	1:C:94:VAL:HG21	1.69	0.56
1:B:302:ASN:HB2	1:B:402:ILE:HD12	1.86	0.56
1:D:739:ALA:HB2	1:D:792:ILE:CG1	2.35	0.56
1:C:540:ILE:HA	1:C:547:GLN:OE1	2.04	0.56
1:F:739:ALA:HB2	1:F:792:ILE:CG1	2.35	0.56
1:A:1092:GLN:HG2	1:A:1213:PRO:HG3	1.87	0.56
1:E:739:ALA:HB2	1:E:792:ILE:CG1	2.34	0.56
1:B:886:PHE:CA	1:C:1301:THR:HG21	2.36	0.56
1:D:1019:ASP:OD1	1:D:1262:ASN:ND2	2.38	0.56
1:E:1092:GLN:HG2	1:E:1213:PRO:HG3	1.88	0.56

Continued on next page...

Continued from previous page...

Atom-1	Atom-2	Interatomic distance (Å)	Clash overlap (Å)
1:C:1092:GLN:HG2	1:C:1213:PRO:HG3	1.87	0.56
1:E:1019:ASP:OD1	1:E:1262:ASN:ND2	2.37	0.56
1:D:1201:LEU:HD12	1:D:1347:ASP:HB3	1.86	0.56
1:B:1019:ASP:HB3	1:B:1023:TYR:OH	2.06	0.56
1:F:1019:ASP:HB3	1:F:1023:TYR:OH	2.06	0.56
1:E:1019:ASP:HB3	1:E:1023:TYR:OH	2.06	0.55
1:E:435:ARG:NH2	1:F:954:ASP:O	2.37	0.55
1:F:1098:ILE:HG13	1:F:1208:VAL:HG12	1.88	0.55
1:E:886:PHE:CA	1:F:1301:THR:HG21	2.36	0.55
1:E:1098:ILE:HG13	1:E:1208:VAL:HG12	1.88	0.55
1:C:279:HIS:CE1	1:C:488:ARG:HD3	2.40	0.55
1:C:1019:ASP:HB3	1:C:1023:TYR:OH	2.06	0.55
1:D:816:PRO:HD2	1:E:1083:ASN:HD21	1.69	0.55
1:B:1098:ILE:HG13	1:B:1208:VAL:HG12	1.88	0.55
1:A:1098:ILE:HG13	1:A:1208:VAL:HG12	1.88	0.55
1:D:1019:ASP:HB3	1:D:1023:TYR:OH	2.06	0.55
1:B:1092:GLN:HG2	1:B:1213:PRO:HG3	1.88	0.55
1:C:1098:ILE:HG13	1:C:1208:VAL:HG12	1.88	0.55
1:B:435:ARG:NH2	1:C:954:ASP:O	2.37	0.55
1:B:534:ILE:HD13	1:B:549:GLY:HA3	1.89	0.54
1:D:1092:GLN:HG2	1:D:1213:PRO:HG3	1.87	0.54
1:A:1019:ASP:HB3	1:A:1023:TYR:OH	2.06	0.54
1:C:150:PRO:HB3	1:C:191:ILE:HG13	1.89	0.54
1:D:1098:ILE:HG13	1:D:1208:VAL:HG12	1.88	0.54
1:D:1269:ASP:OD1	1:D:1270:LEU:N	2.41	0.54
1:C:1269:ASP:OD1	1:C:1270:LEU:N	2.40	0.54
1:A:1269:ASP:OD1	1:A:1270:LEU:N	2.41	0.54
1:C:1297:ASP:OD2	1:C:1299:GLU:OE2	2.26	0.54
1:D:969:THR:HG21	1:D:973:THR:HG23	1.89	0.54
1:A:534:ILE:HD13	1:A:549:GLY:HA3	1.90	0.54
1:B:1269:ASP:OD1	1:B:1270:LEU:N	2.40	0.54
1:F:533:SER:OG	1:F:552:THR:O	2.25	0.54
1:B:547:GLN:HG3	1:B:683:ALA:HB3	1.90	0.54
1:E:534:ILE:HD13	1:E:549:GLY:HA3	1.89	0.54
1:B:150:PRO:HB3	1:B:191:ILE:HG13	1.90	0.54
1:D:1297:ASP:OD2	1:D:1299:GLU:OE2	2.26	0.54
1:E:533:SER:OG	1:E:552:THR:O	2.25	0.54
1:E:1269:ASP:OD1	1:E:1270:LEU:N	2.40	0.54
1:F:150:PRO:HB3	1:F:191:ILE:HG13	1.89	0.54
1:B:1297:ASP:OD2	1:B:1299:GLU:OE2	2.26	0.53
1:E:1265:ALA:HA	1:E:1305:GLU:OE2	2.08	0.53

Continued on next page...

Continued from previous page...

Atom-1	Atom-2	Interatomic distance (Å)	Clash overlap (Å)
1:F:534:ILE:HD13	1:F:549:GLY:HA3	1.90	0.53
1:F:1269:ASP:OD1	1:F:1270:LEU:N	2.40	0.53
1:D:436:GLY:O	1:E:861:ILE:HD13	2.08	0.53
1:C:525:THR:HG21	1:C:555:ILE:HD13	1.91	0.53
1:E:249:VAL:HG11	1:F:411:PRO:HG2	1.90	0.53
1:E:813:VAL:HG13	1:E:815:THR:HG23	1.91	0.53
1:E:1297:ASP:OD2	1:E:1299:GLU:OE2	2.26	0.53
1:C:534:ILE:HD13	1:C:549:GLY:HA3	1.90	0.53
1:D:534:ILE:HD13	1:D:549:GLY:HA3	1.90	0.53
1:C:969:THR:HG21	1:C:973:THR:HG23	1.90	0.53
1:D:1265:ALA:HA	1:D:1305:GLU:OE2	2.08	0.53
1:F:969:THR:HG21	1:F:973:THR:HG23	1.90	0.53
1:A:969:THR:HG21	1:A:973:THR:HG23	1.89	0.53
1:B:813:VAL:HG13	1:B:815:THR:HG23	1.91	0.53
1:C:1163:SER:OG	1:C:1165:GLN:OE1	2.21	0.53
1:C:1265:ALA:HA	1:C:1305:GLU:OE2	2.08	0.53
1:E:150:PRO:HB3	1:E:191:ILE:HG13	1.90	0.53
1:B:249:VAL:HG11	1:C:411:PRO:HG2	1.90	0.53
1:C:436:GLY:O	1:D:861:ILE:HD13	2.09	0.53
1:A:533:SER:OG	1:A:552:THR:O	2.25	0.53
1:A:1102:ARG:NH1	1:A:1204:ASP:OD2	2.42	0.53
1:B:1102:ARG:NH1	1:B:1204:ASP:OD2	2.42	0.53
1:C:401:SER:O	1:C:401:SER:OG	2.22	0.53
1:D:1262:ASN:HB2	1:D:1309:SER:OG	2.09	0.53
1:A:436:GLY:O	1:B:861:ILE:HD13	2.08	0.52
1:A:1083:ASN:HD21	1:F:816:PRO:HD2	1.73	0.52
1:B:739:ALA:HB2	1:B:792:ILE:HG13	1.91	0.52
1:D:1102:ARG:NH1	1:D:1204:ASP:OD2	2.42	0.52
1:E:401:SER:O	1:E:401:SER:OG	2.23	0.52
1:E:547:GLN:HG3	1:E:683:ALA:HB3	1.90	0.52
1:A:1262:ASN:HB2	1:A:1309:SER:OG	2.09	0.52
1:B:1265:ALA:HA	1:B:1305:GLU:OE2	2.08	0.52
1:C:435:ARG:NH1	1:D:937:THR:O	2.42	0.52
1:F:1102:ARG:NH1	1:F:1204:ASP:OD2	2.42	0.52
1:A:999:GLU:HB3	1:B:1304:ARG:NH1	2.25	0.52
1:C:1102:ARG:NH1	1:C:1204:ASP:OD2	2.42	0.52
1:D:533:SER:OG	1:D:552:THR:O	2.25	0.52
1:F:1297:ASP:OD2	1:F:1299:GLU:OE2	2.26	0.52
1:B:76:LYS:HD2	1:C:94:VAL:O	2.10	0.52
1:C:322:ASN:OD1	1:C:322:ASN:C	2.48	0.52
1:C:1262:ASN:HB2	1:C:1309:SER:OG	2.10	0.52

Continued on next page...

Continued from previous page...

Atom-1	Atom-2	Interatomic distance (Å)	Clash overlap (Å)
1:A:150:PRO:HB3	1:A:191:ILE:HG13	1.90	0.52
1:A:937:THR:O	1:F:435:ARG:NH1	2.42	0.52
1:A:1265:ALA:HA	1:A:1305:GLU:OE2	2.08	0.52
1:D:150:PRO:HB3	1:D:191:ILE:HG13	1.90	0.52
1:F:322:ASN:C	1:F:322:ASN:OD1	2.48	0.52
1:A:547:GLN:HG3	1:A:683:ALA:HB3	1.91	0.52
1:B:969:THR:HG21	1:B:973:THR:HG23	1.91	0.52
1:E:502:LEU:HD13	1:E:806:ASN:O	2.10	0.52
1:E:807:ASP:OD1	1:E:808:LEU:N	2.43	0.52
1:E:969:THR:HG21	1:E:973:THR:HG23	1.91	0.52
1:E:1262:ASN:HB2	1:E:1309:SER:OG	2.10	0.52
1:C:547:GLN:HG3	1:C:683:ALA:HB3	1.92	0.52
1:A:112:ASP:OD1	1:A:123:ASP:OD2	2.28	0.52
1:C:807:ASP:OD1	1:C:808:LEU:N	2.43	0.52
1:D:739:ALA:HB2	1:D:792:ILE:HG13	1.92	0.52
1:F:525:THR:HG21	1:F:555:ILE:HD13	1.91	0.52
1:F:1262:ASN:HB2	1:F:1309:SER:OG	2.10	0.52
1:A:739:ALA:HB2	1:A:792:ILE:HG13	1.92	0.52
1:E:739:ALA:HB2	1:E:792:ILE:HG13	1.92	0.52
1:B:807:ASP:OD1	1:B:808:LEU:N	2.43	0.52
1:E:1102:ARG:NH1	1:E:1204:ASP:OD2	2.42	0.52
1:F:807:ASP:OD1	1:F:808:LEU:N	2.43	0.52
1:E:525:THR:HG21	1:E:555:ILE:HD13	1.92	0.51
1:A:695:ASP:OD2	1:A:696:SER:N	2.43	0.51
1:A:861:ILE:HD13	1:F:436:GLY:O	2.10	0.51
1:B:502:LEU:HD13	1:B:806:ASN:O	2.10	0.51
1:C:816:PRO:CG	1:D:1083:ASN:HD21	2.18	0.51
1:C:1055:THR:OG1	1:C:1062:GLU:OE2	2.22	0.51
1:A:1083:ASN:ND2	1:F:816:PRO:HG2	2.25	0.51
1:D:547:GLN:HG3	1:D:683:ALA:HB3	1.92	0.51
1:E:1163:SER:OG	1:E:1165:GLN:OE1	2.22	0.51
1:B:88:LEU:HD12	1:B:229:GLN:OE1	2.10	0.51
1:A:724:SER:OG	1:A:740:ASN:ND2	2.44	0.51
1:A:807:ASP:OD1	1:A:808:LEU:N	2.44	0.51
1:F:547:GLN:HG3	1:F:683:ALA:HB3	1.92	0.51
1:B:401:SER:O	1:B:401:SER:OG	2.23	0.51
1:B:533:SER:OG	1:B:552:THR:O	2.25	0.51
1:C:739:ALA:HB2	1:C:792:ILE:HG13	1.92	0.51
1:E:1262:ASN:O	1:E:1308:ASP:HB3	2.11	0.51
1:F:695:ASP:OD2	1:F:696:SER:N	2.44	0.51
1:B:525:THR:HG21	1:B:555:ILE:HD13	1.92	0.51

Continued on next page...

Continued from previous page...

Atom-1	Atom-2	Interatomic distance (Å)	Clash overlap (Å)
1:B:1262:ASN:HB2	1:B:1309:SER:OG	2.10	0.51
1:D:502:LEU:HD13	1:D:806:ASN:O	2.11	0.51
1:D:695:ASP:OD2	1:D:696:SER:N	2.43	0.51
1:E:76:LYS:HD2	1:F:94:VAL:O	2.10	0.51
1:E:88:LEU:HD12	1:E:229:GLN:OE1	2.10	0.51
1:F:88:LEU:HD12	1:F:229:GLN:OE1	2.11	0.51
1:A:525:THR:HG21	1:A:555:ILE:HD13	1.93	0.51
1:B:695:ASP:OD2	1:B:696:SER:N	2.43	0.51
1:C:695:ASP:OD2	1:C:696:SER:N	2.44	0.51
1:D:807:ASP:OD1	1:D:808:LEU:N	2.44	0.51
1:D:893:LEU:HD13	1:D:941:LEU:HD11	1.93	0.51
1:F:739:ALA:HB2	1:F:792:ILE:HG13	1.92	0.51
1:F:37:ALA:HB2	1:F:251:SER:O	2.11	0.51
1:F:1262:ASN:O	1:F:1308:ASP:HB3	2.11	0.51
1:D:525:THR:HG21	1:D:555:ILE:HD13	1.94	0.50
1:D:1262:ASN:O	1:D:1308:ASP:HB3	2.11	0.50
1:E:695:ASP:OD2	1:E:696:SER:N	2.43	0.50
1:A:88:LEU:HD12	1:A:229:GLN:OE1	2.11	0.50
1:A:502:LEU:HD13	1:A:806:ASN:O	2.11	0.50
1:F:1050:HIS:NE2	1:F:1274:GLU:OE1	2.45	0.50
1:E:1050:HIS:NE2	1:E:1274:GLU:OE1	2.45	0.50
1:C:1262:ASN:O	1:C:1308:ASP:HB3	2.11	0.50
1:F:502:LEU:HD13	1:F:806:ASN:O	2.12	0.50
1:A:1050:HIS:NE2	1:A:1274:GLU:OE1	2.45	0.50
1:B:1262:ASN:O	1:B:1308:ASP:HB3	2.10	0.50
1:C:1050:HIS:NE2	1:C:1274:GLU:OE1	2.45	0.50
1:D:724:SER:OG	1:D:740:ASN:ND2	2.44	0.50
1:D:1050:HIS:NE2	1:D:1274:GLU:OE1	2.45	0.50
1:A:1163:SER:OG	1:A:1165:GLN:OE1	2.21	0.50
1:A:1262:ASN:O	1:A:1308:ASP:HB3	2.11	0.50
1:B:724:SER:OG	1:B:740:ASN:ND2	2.45	0.50
1:B:1050:HIS:NE2	1:B:1274:GLU:OE1	2.45	0.50
1:C:88:LEU:HD12	1:C:229:GLN:OE1	2.11	0.50
1:D:999:GLU:HG2	1:E:1304:ARG:NH1	2.27	0.50
1:F:724:SER:OG	1:F:740:ASN:ND2	2.44	0.50
1:C:502:LEU:HD13	1:C:806:ASN:O	2.12	0.50
1:C:724:SER:OG	1:C:740:ASN:ND2	2.44	0.50
1:D:88:LEU:HD12	1:D:229:GLN:OE1	2.11	0.50
1:C:533:SER:OG	1:C:552:THR:O	2.25	0.49
1:E:84:ASN:ND2	1:F:421:GLU:HB3	2.27	0.49
1:B:1163:SER:OG	1:B:1165:GLN:OE1	2.21	0.49

Continued on next page...

Continued from previous page...

Atom-1	Atom-2	Interatomic distance (Å)	Clash overlap (Å)
1:E:893:LEU:HD13	1:E:941:LEU:HD11	1.95	0.49
1:B:84:ASN:ND2	1:C:421:GLU:CB	2.75	0.49
1:B:1276:ASP:HB3	1:B:1281:THR:HG23	1.95	0.49
1:E:724:SER:OG	1:E:740:ASN:ND2	2.45	0.49
1:F:1276:ASP:HB3	1:F:1281:THR:HG23	1.95	0.49
1:A:745:ILE:HD11	1:A:761:LEU:HD21	1.94	0.49
1:E:512:PHE:HA	1:E:516:GLU:HG3	1.95	0.49
1:E:745:ILE:HD11	1:E:761:LEU:HD21	1.94	0.49
1:A:512:PHE:HA	1:A:516:GLU:HG3	1.94	0.49
1:B:112:ASP:OD1	1:B:123:ASP:OD2	2.31	0.49
1:C:1122:ASP:HB2	1:C:1133:ILE:HD12	1.95	0.49
1:A:275:VAL:HB	1:A:485:LYS:HE3	1.94	0.49
1:A:893:LEU:HD13	1:A:941:LEU:HD11	1.93	0.49
1:A:1122:ASP:HB2	1:A:1133:ILE:HD12	1.95	0.49
1:B:275:VAL:HB	1:B:485:LYS:HE3	1.95	0.49
1:B:512:PHE:HA	1:B:516:GLU:HG3	1.95	0.49
1:B:745:ILE:HD11	1:B:761:LEU:HD21	1.94	0.49
1:C:512:PHE:HA	1:C:516:GLU:HG3	1.95	0.49
1:C:1276:ASP:HB3	1:C:1281:THR:HG23	1.95	0.49
1:D:512:PHE:HA	1:D:516:GLU:HG3	1.94	0.49
1:D:745:ILE:HD11	1:D:761:LEU:HD21	1.94	0.49
1:F:512:PHE:HA	1:F:516:GLU:HG3	1.95	0.49
1:E:84:ASN:ND2	1:F:421:GLU:CB	2.75	0.49
1:E:730:ASP:HB2	1:E:732:VAL:HG23	1.95	0.49
1:E:813:VAL:HG11	1:F:956:GLN:CD	2.33	0.49
1:B:1051:ALA:HA	1:B:1054:ILE:HD12	1.95	0.49
1:A:804:ASN:HD21	1:B:1087:GLU:HG3	1.78	0.49
1:A:1276:ASP:HB3	1:A:1281:THR:HG23	1.95	0.49
1:B:84:ASN:ND2	1:C:421:GLU:HB3	2.27	0.49
1:B:1122:ASP:HB2	1:B:1133:ILE:HD12	1.95	0.49
1:D:1122:ASP:HB2	1:D:1133:ILE:HD12	1.95	0.49
1:D:275:VAL:HB	1:D:485:LYS:HE3	1.94	0.48
1:D:804:ASN:HD21	1:E:1087:GLU:HG3	1.77	0.48
1:E:902:TRP:CZ2	1:E:958:PRO:HG3	2.48	0.48
1:E:1239:ASP:OD1	1:E:1240:LYS:N	2.46	0.48
1:A:1051:ALA:HA	1:A:1054:ILE:HD12	1.95	0.48
1:B:813:VAL:HG11	1:C:956:GLN:CD	2.33	0.48
1:D:112:ASP:OD1	1:D:123:ASP:OD2	2.30	0.48
1:E:1051:ALA:HA	1:E:1054:ILE:HD12	1.95	0.48
1:A:354:GLN:NE2	1:B:861:ILE:HD12	2.28	0.48
1:B:1075:ILE:HD12	1:B:1139:MET:CE	2.43	0.48

Continued on next page...

Continued from previous page...

Atom-1	Atom-2	Interatomic distance (Å)	Clash overlap (Å)
1:E:1276:ASP:HB3	1:E:1281:THR:HG23	1.95	0.48
1:E:1346:SER:OG	1:E:1348:TYR:O	2.30	0.48
1:F:89:ARG:NH1	1:F:140:SER:O	2.46	0.48
1:B:293:ASP:OD1	1:B:294:GLU:OE1	2.31	0.48
1:B:902:TRP:CZ2	1:B:958:PRO:HG3	2.48	0.48
1:D:730:ASP:HB2	1:D:732:VAL:HG23	1.95	0.48
1:D:1163:SER:OG	1:D:1165:GLN:OE1	2.21	0.48
1:D:1346:SER:OG	1:D:1348:TYR:O	2.30	0.48
1:E:275:VAL:HB	1:E:485:LYS:HE3	1.95	0.48
1:E:1075:ILE:HD12	1:E:1139:MET:CE	2.43	0.48
1:F:110:ILE:O	1:F:113:SER:OG	2.31	0.48
1:F:112:ASP:OD1	1:F:123:ASP:OD2	2.31	0.48
1:F:1239:ASP:OD1	1:F:1240:LYS:N	2.46	0.48
1:A:273:PRO:HG2	1:A:276:SER:OG	2.14	0.48
1:C:89:ARG:NH1	1:C:140:SER:O	2.46	0.48
1:E:112:ASP:OD1	1:E:123:ASP:OD2	2.31	0.48
1:A:1087:GLU:HG3	1:F:804:ASN:HD21	1.79	0.48
1:A:1143:ALA:HB3	1:A:1146:ALA:HB2	1.96	0.48
1:F:275:VAL:O	1:F:275:VAL:CG1	2.62	0.48
1:F:1143:ALA:HB3	1:F:1146:ALA:HB2	1.96	0.48
1:F:1346:SER:OG	1:F:1348:TYR:O	2.30	0.48
1:A:629:VAL:HG11	1:A:704:MET:HE3	1.96	0.48
1:B:893:LEU:HD13	1:B:941:LEU:HD11	1.95	0.48
1:B:1258:PHE:HB3	1:B:1268:TYR:CE2	2.49	0.48
1:C:273:PRO:HG2	1:C:276:SER:OG	2.14	0.48
1:C:902:TRP:CZ2	1:C:958:PRO:HG3	2.49	0.48
1:D:354:GLN:NE2	1:E:861:ILE:HD12	2.28	0.48
1:D:902:TRP:CZ2	1:D:958:PRO:HG3	2.49	0.48
1:D:1269:ASP:CG	1:D:1271:ASP:OD2	2.52	0.48
1:E:804:ASN:HD21	1:F:1087:GLU:HG3	1.79	0.48
1:F:902:TRP:CZ2	1:F:958:PRO:HG3	2.49	0.48
1:A:275:VAL:O	1:A:275:VAL:CG1	2.62	0.48
1:A:902:TRP:CZ2	1:A:958:PRO:HG3	2.49	0.48
1:A:1269:ASP:CG	1:A:1271:ASP:OD2	2.52	0.48
1:B:730:ASP:HB2	1:B:732:VAL:HG23	1.95	0.48
1:C:112:ASP:OD1	1:C:123:ASP:OD2	2.31	0.48
1:D:110:ILE:O	1:D:113:SER:OG	2.30	0.48
1:D:273:PRO:HG2	1:D:276:SER:OG	2.14	0.48
1:E:89:ARG:NH1	1:E:140:SER:O	2.47	0.48
1:E:1245:ILE:HD12	1:E:1245:ILE:H	1.79	0.48
1:E:1269:ASP:CG	1:E:1271:ASP:OD2	2.52	0.48

Continued on next page...

Continued from previous page...

Atom-1	Atom-2	Interatomic distance (Å)	Clash overlap (Å)
1:F:1122:ASP:HB2	1:F:1133:ILE:HD12	1.95	0.48
1:C:804:ASN:HD21	1:D:1087:GLU:HG3	1.78	0.48
1:C:1258:PHE:HB3	1:C:1268:TYR:CE2	2.49	0.48
1:D:1051:ALA:HA	1:D:1054:ILE:HD12	1.95	0.48
1:A:730:ASP:HB2	1:A:732:VAL:HG23	1.94	0.47
1:B:1143:ALA:HB3	1:B:1146:ALA:HB2	1.95	0.47
1:B:1245:ILE:HD12	1:B:1245:ILE:H	1.79	0.47
1:C:730:ASP:HB2	1:C:732:VAL:HG23	1.95	0.47
1:C:1269:ASP:CG	1:C:1271:ASP:OD2	2.52	0.47
1:D:1239:ASP:OD1	1:D:1240:LYS:N	2.46	0.47
1:E:293:ASP:OD1	1:E:294:GLU:OE1	2.31	0.47
1:F:1048:PRO:HD2	1:F:1341:TRP:CD1	2.49	0.47
1:C:275:VAL:O	1:C:275:VAL:CG1	2.62	0.47
1:C:1239:ASP:OD1	1:C:1240:LYS:N	2.46	0.47
1:F:293:ASP:OD1	1:F:294:GLU:OE1	2.32	0.47
1:B:275:VAL:O	1:B:275:VAL:CG1	2.62	0.47
1:B:290:ASP:OD2	1:B:293:ASP:N	2.46	0.47
1:F:273:PRO:HG2	1:F:276:SER:OG	2.14	0.47
1:A:293:ASP:OD1	1:A:294:GLU:OE1	2.32	0.47
1:A:1075:ILE:HD12	1:A:1139:MET:HE3	1.96	0.47
1:A:1239:ASP:OD1	1:A:1240:LYS:N	2.46	0.47
1:B:1269:ASP:CG	1:B:1271:ASP:OD2	2.52	0.47
1:D:1276:ASP:HB3	1:D:1281:THR:HG23	1.95	0.47
1:E:1122:ASP:HB2	1:E:1133:ILE:HD12	1.95	0.47
1:F:730:ASP:HB2	1:F:732:VAL:HG23	1.96	0.47
1:F:1051:ALA:HA	1:F:1054:ILE:HD12	1.96	0.47
1:A:89:ARG:NH1	1:A:140:SER:O	2.47	0.47
1:A:104:ASP:OD2	1:A:105:ARG:N	2.48	0.47
1:B:89:ARG:NH1	1:B:140:SER:O	2.47	0.47
1:E:275:VAL:O	1:E:275:VAL:CG1	2.62	0.47
1:F:1258:PHE:HB3	1:F:1268:TYR:CE2	2.49	0.47
1:A:1258:PHE:HB3	1:A:1268:TYR:CE2	2.50	0.47
1:B:1239:ASP:OD1	1:B:1240:LYS:N	2.46	0.47
1:C:104:ASP:OD2	1:C:105:ARG:N	2.48	0.47
1:C:629:VAL:HG11	1:C:704:MET:HE3	1.97	0.47
1:C:1048:PRO:HD2	1:C:1341:TRP:CD1	2.49	0.47
1:C:1245:ILE:HD12	1:C:1245:ILE:H	1.79	0.47
1:D:1075:ILE:HD12	1:D:1139:MET:CE	2.45	0.47
1:F:104:ASP:OD2	1:F:105:ARG:N	2.48	0.47
1:F:290:ASP:OD2	1:F:293:ASP:N	2.47	0.47
1:A:1069:LEU:O	1:A:1154:ASN:ND2	2.47	0.47

Continued on next page...

Continued from previous page...

Atom-1	Atom-2	Interatomic distance (Å)	Clash overlap (Å)
1:B:1048:PRO:HD2	1:B:1341:TRP:CD1	2.49	0.47
1:C:525:THR:HG21	1:C:555:ILE:CD1	2.45	0.47
1:C:733:GLN:HB2	1:C:736:GLU:OE2	2.15	0.47
1:C:1143:ALA:HB3	1:C:1146:ALA:HB2	1.96	0.47
1:D:1143:ALA:HB3	1:D:1146:ALA:HB2	1.96	0.47
1:E:234:ASN:HB3	1:F:422:SER:HB3	1.94	0.47
1:A:607:THR:O	1:A:610:GLU:HG2	2.15	0.47
1:B:234:ASN:HB3	1:C:422:SER:HB3	1.94	0.47
1:B:484:ASN:HD21	1:B:753:ASN:HA	1.80	0.47
1:B:1069:LEU:O	1:B:1154:ASN:ND2	2.47	0.47
1:C:1051:ALA:HA	1:C:1054:ILE:HD12	1.96	0.47
1:D:89:ARG:NH1	1:D:140:SER:O	2.47	0.47
1:D:1048:PRO:HD2	1:D:1341:TRP:CD1	2.49	0.47
1:D:1322:SER:HB2	1:D:1327:LYS:HG2	1.96	0.47
1:E:273:PRO:HG2	1:E:276:SER:OG	2.15	0.47
1:B:804:ASN:HD21	1:C:1087:GLU:HG3	1.79	0.47
1:D:104:ASP:OD2	1:D:105:ARG:N	2.48	0.47
1:D:293:ASP:OD1	1:D:294:GLU:OE1	2.32	0.47
1:D:1258:PHE:HB3	1:D:1268:TYR:CE2	2.50	0.47
1:E:886:PHE:C	1:F:1301:THR:HG21	2.36	0.47
1:E:1048:PRO:HD2	1:E:1341:TRP:CD1	2.50	0.47
1:E:1258:PHE:HB3	1:E:1268:TYR:CE2	2.49	0.47
1:C:290:ASP:OD2	1:C:293:ASP:N	2.47	0.47
1:C:293:ASP:OD1	1:C:294:GLU:OE1	2.32	0.47
1:C:1322:SER:HB2	1:C:1327:LYS:HG2	1.97	0.47
1:E:607:THR:O	1:E:610:GLU:HG2	2.15	0.47
1:F:1269:ASP:CG	1:F:1271:ASP:OD2	2.53	0.47
1:A:290:ASP:OD2	1:A:293:ASP:N	2.46	0.46
1:A:1048:PRO:HD2	1:A:1341:TRP:CD1	2.50	0.46
1:B:607:THR:O	1:B:610:GLU:HG2	2.15	0.46
1:D:290:ASP:OD2	1:D:293:ASP:N	2.46	0.46
1:E:84:ASN:HD22	1:F:421:GLU:HB3	1.80	0.46
1:E:104:ASP:OD2	1:E:105:ARG:N	2.48	0.46
1:F:525:THR:HG21	1:F:555:ILE:CD1	2.45	0.46
1:A:956:GLN:CD	1:F:813:VAL:HG11	2.35	0.46
1:B:733:GLN:HB2	1:B:736:GLU:OE2	2.15	0.46
1:E:733:GLN:HB2	1:E:736:GLU:OE2	2.15	0.46
1:E:1143:ALA:HB3	1:E:1146:ALA:HB2	1.95	0.46
1:F:607:THR:O	1:F:610:GLU:HG2	2.16	0.46
1:A:733:GLN:HB2	1:A:736:GLU:OE2	2.16	0.46
1:B:273:PRO:HG2	1:B:276:SER:OG	2.15	0.46

Continued on next page...

Continued from previous page...

Atom-1	Atom-2	Interatomic distance (Å)	Clash overlap (Å)
1:C:484:ASN:HD21	1:C:753:ASN:HA	1.80	0.46
1:F:401:SER:O	1:F:401:SER:OG	2.22	0.46
1:F:484:ASN:HD21	1:F:753:ASN:HA	1.80	0.46
1:F:1075:ILE:HD12	1:F:1139:MET:CE	2.45	0.46
1:A:1075:ILE:HD12	1:A:1139:MET:CE	2.45	0.46
1:B:104:ASP:OD2	1:B:105:ARG:N	2.48	0.46
1:B:680:LEU:HD13	1:B:684:VAL:HG11	1.98	0.46
1:D:733:GLN:HB2	1:D:736:GLU:OE2	2.15	0.46
1:F:1245:ILE:HD12	1:F:1245:ILE:H	1.79	0.46
1:B:1346:SER:OG	1:B:1348:TYR:O	2.31	0.46
1:F:733:GLN:HB2	1:F:736:GLU:OE2	2.14	0.46
1:C:607:THR:O	1:C:610:GLU:HG2	2.16	0.46
1:C:1075:ILE:HD12	1:C:1139:MET:CE	2.45	0.46
1:D:275:VAL:O	1:D:275:VAL:CG1	2.62	0.46
1:E:484:ASN:HD21	1:E:753:ASN:HA	1.80	0.46
1:B:739:ALA:HB2	1:B:792:ILE:HG12	1.97	0.46
1:B:1300:PRO:O	1:B:1315:ILE:HD11	2.16	0.46
1:D:87:VAL:HG12	1:D:143:GLU:HB3	1.98	0.46
1:F:1300:PRO:O	1:F:1315:ILE:HD11	2.16	0.46
1:F:1322:SER:HB2	1:F:1327:LYS:HG2	1.97	0.46
1:C:1075:ILE:HD12	1:C:1139:MET:HE3	1.97	0.46
1:D:484:ASN:HD21	1:D:753:ASN:HA	1.81	0.46
1:D:739:ALA:HB2	1:D:792:ILE:HG12	1.98	0.46
1:D:1300:PRO:O	1:D:1315:ILE:HD11	2.16	0.46
1:E:1069:LEU:O	1:E:1154:ASN:ND2	2.47	0.46
1:F:1027:PHE:HB3	1:F:1349:VAL:HB	1.98	0.46
1:A:1269:ASP:OD1	1:A:1271:ASP:OD2	2.34	0.46
1:B:525:THR:HG21	1:B:555:ILE:CD1	2.46	0.46
1:D:1269:ASP:OD1	1:D:1271:ASP:OD2	2.34	0.46
1:F:893:LEU:HD13	1:F:941:LEU:HD11	1.98	0.46
1:B:84:ASN:HD22	1:C:421:GLU:HB3	1.80	0.46
1:E:290:ASP:OD2	1:E:293:ASP:N	2.46	0.46
1:A:1300:PRO:O	1:A:1315:ILE:HD11	2.16	0.45
1:B:502:LEU:HD22	1:B:806:ASN:HB3	1.98	0.45
1:C:739:ALA:HB2	1:C:792:ILE:HG12	1.98	0.45
1:C:1300:PRO:O	1:C:1315:ILE:HD11	2.16	0.45
1:D:680:LEU:HD13	1:D:684:VAL:HG11	1.98	0.45
1:F:745:ILE:HD11	1:F:761:LEU:HD21	1.98	0.45
1:A:110:ILE:O	1:A:113:SER:OG	2.30	0.45
1:A:904:THR:OG1	1:A:906:ASP:OD2	2.34	0.45
1:A:1027:PHE:HB3	1:A:1349:VAL:HB	1.98	0.45

Continued on next page...

Continued from previous page...

Atom-1	Atom-2	Interatomic distance (Å)	Clash overlap (Å)
1:A:1346:SER:OG	1:A:1348:TYR:O	2.30	0.45
1:E:66:ASP:OD1	1:E:67:SER:N	2.50	0.45
1:E:1300:PRO:O	1:E:1315:ILE:HD11	2.16	0.45
1:A:680:LEU:HD13	1:A:684:VAL:HG11	1.97	0.45
1:B:904:THR:OG1	1:B:906:ASP:OD2	2.35	0.45
1:C:893:LEU:HD13	1:C:941:LEU:HD11	1.98	0.45
1:C:1269:ASP:OD1	1:C:1271:ASP:OD2	2.35	0.45
1:D:607:THR:O	1:D:610:GLU:HG2	2.15	0.45
1:F:629:VAL:HG11	1:F:704:MET:HE3	1.98	0.45
1:B:66:ASP:OD1	1:B:67:SER:N	2.50	0.45
1:C:66:ASP:OD1	1:C:67:SER:N	2.49	0.45
1:C:87:VAL:HG12	1:C:143:GLU:HB3	1.99	0.45
1:D:66:ASP:OD1	1:D:67:SER:N	2.50	0.45
1:D:1027:PHE:HB3	1:D:1349:VAL:HB	1.99	0.45
1:A:87:VAL:HG12	1:A:143:GLU:HB3	1.98	0.45
1:C:904:THR:OG1	1:C:906:ASP:OD2	2.35	0.45
1:C:1346:SER:OG	1:C:1348:TYR:O	2.30	0.45
1:D:1245:ILE:H	1:D:1245:ILE:HD12	1.81	0.45
1:E:525:THR:HG21	1:E:555:ILE:CD1	2.46	0.45
1:A:739:ALA:HB2	1:A:792:ILE:HG12	1.98	0.45
1:C:502:LEU:HD22	1:C:806:ASN:HB3	1.98	0.45
1:C:1027:PHE:HB3	1:C:1349:VAL:HB	1.98	0.45
1:E:680:LEU:HD13	1:E:684:VAL:HG11	1.98	0.45
1:F:654:ASN:OD1	1:F:655:ASP:N	2.50	0.45
1:F:1069:LEU:O	1:F:1154:ASN:ND2	2.47	0.45
1:B:837:TYR:CZ	1:B:843:VAL:HG23	2.52	0.45
1:B:1027:PHE:HB3	1:B:1349:VAL:HB	1.99	0.45
1:B:1269:ASP:OD1	1:B:1271:ASP:OD2	2.35	0.45
1:C:816:PRO:HG2	1:D:1083:ASN:HD22	1.79	0.45
1:E:654:ASN:OD1	1:E:655:ASP:N	2.50	0.45
1:E:837:TYR:CZ	1:E:843:VAL:HG23	2.52	0.45
1:F:66:ASP:OD1	1:F:67:SER:N	2.49	0.45
1:F:739:ALA:HB2	1:F:792:ILE:HG12	1.98	0.45
1:C:813:VAL:HG11	1:D:956:GLN:CD	2.37	0.45
1:E:999:GLU:OE1	1:F:1265:ALA:HB3	2.17	0.45
1:F:837:TYR:CZ	1:F:843:VAL:HG23	2.52	0.45
1:A:502:LEU:HD22	1:A:806:ASN:HB3	1.99	0.45
1:A:654:ASN:OD1	1:A:655:ASP:N	2.50	0.45
1:B:1075:ILE:HD12	1:B:1139:MET:HE3	1.99	0.45
1:C:745:ILE:HD11	1:C:761:LEU:HD21	1.98	0.45
1:C:837:TYR:CZ	1:C:843:VAL:HG23	2.52	0.45

Continued on next page...

Continued from previous page...

Atom-1	Atom-2	Interatomic distance (Å)	Clash overlap (Å)
1:C:881:THR:OG1	1:C:888:GLU:OE2	2.25	0.45
1:D:629:VAL:HG11	1:D:704:MET:HE3	1.99	0.45
1:A:66:ASP:OD1	1:A:67:SER:N	2.50	0.44
1:A:484:ASN:HD21	1:A:753:ASN:HA	1.81	0.44
1:C:110:ILE:O	1:C:113:SER:OG	2.31	0.44
1:D:1075:ILE:HD12	1:D:1139:MET:HE3	1.99	0.44
1:F:1269:ASP:OD1	1:F:1271:ASP:OD2	2.35	0.44
1:A:313:ASP:OD1	1:A:314:THR:N	2.47	0.44
1:A:525:THR:HG21	1:A:555:ILE:CD1	2.47	0.44
1:B:1274:GLU:HB3	1:B:1337:GLU:HB3	2.00	0.44
1:C:313:ASP:OD1	1:C:314:THR:N	2.47	0.44
1:D:904:THR:OG1	1:D:906:ASP:OD2	2.35	0.44
1:E:110:ILE:O	1:E:113:SER:OG	2.30	0.44
1:E:739:ALA:HB2	1:E:792:ILE:HG12	1.97	0.44
1:E:1027:PHE:HB3	1:E:1349:VAL:HB	1.99	0.44
1:B:654:ASN:OD1	1:B:655:ASP:N	2.50	0.44
1:D:502:LEU:HD22	1:D:806:ASN:HB3	1.99	0.44
1:F:1163:SER:OG	1:F:1165:GLN:OE1	2.21	0.44
1:A:1005:ASP:OD2	1:A:1006:SER:N	2.51	0.44
1:B:1005:ASP:OD2	1:B:1006:SER:N	2.51	0.44
1:C:1202:GLN:HG2	1:C:1230:ASP:HA	1.99	0.44
1:E:447:PRO:HG2	1:F:858:LEU:HG	2.00	0.44
1:E:1202:GLN:HG2	1:E:1230:ASP:HA	1.99	0.44
1:F:313:ASP:OD1	1:F:314:THR:N	2.47	0.44
1:A:1202:GLN:HG2	1:A:1230:ASP:HA	1.99	0.44
1:C:1005:ASP:OD2	1:C:1006:SER:N	2.51	0.44
1:F:904:THR:OG1	1:F:906:ASP:OD2	2.35	0.44
1:A:130:SER:OG	1:A:144:THR:O	2.27	0.44
1:A:153:ILE:HD13	1:A:164:GLN:HB2	2.00	0.44
1:A:837:TYR:CZ	1:A:843:VAL:HG23	2.52	0.44
1:A:1274:GLU:HB3	1:A:1337:GLU:HB3	1.99	0.44
1:D:401:SER:O	1:D:401:SER:OG	2.23	0.44
1:E:1269:ASP:OD1	1:E:1271:ASP:OD2	2.35	0.44
1:B:886:PHE:C	1:C:1301:THR:HG21	2.37	0.44
1:D:837:TYR:CZ	1:D:843:VAL:HG23	2.52	0.44
1:F:502:LEU:HD22	1:F:806:ASN:HB3	1.98	0.44
1:B:344:ASN:HB3	1:B:444:ASN:OD1	2.18	0.44
1:C:469:THR:HG22	1:C:826:HIS:CE1	2.53	0.44
1:E:904:THR:OG1	1:E:906:ASP:OD2	2.35	0.44
1:C:654:ASN:OD1	1:C:655:ASP:N	2.50	0.44
1:B:313:ASP:OD1	1:B:314:THR:N	2.47	0.43

Continued on next page...

Continued from previous page...

Atom-1	Atom-2	Interatomic distance (Å)	Clash overlap (Å)
1:E:344:ASN:HB3	1:E:444:ASN:OD1	2.18	0.43
1:E:620:VAL:O	1:E:726:GLY:HA3	2.18	0.43
1:E:1274:GLU:HB3	1:E:1337:GLU:HB3	2.00	0.43
1:F:1005:ASP:OD2	1:F:1006:SER:N	2.51	0.43
1:A:629:VAL:HG11	1:A:704:MET:CE	2.49	0.43
1:B:1202:GLN:HG2	1:B:1230:ASP:HA	2.00	0.43
1:D:153:ILE:HD13	1:D:164:GLN:HB2	2.00	0.43
1:E:313:ASP:OD1	1:E:314:THR:N	2.47	0.43
1:E:502:LEU:HD22	1:E:806:ASN:HB3	1.98	0.43
1:D:130:SER:OG	1:D:144:THR:O	2.27	0.43
1:D:654:ASN:OD1	1:D:655:ASP:N	2.50	0.43
1:D:1005:ASP:OD2	1:D:1006:SER:N	2.51	0.43
1:D:1202:GLN:HG2	1:D:1230:ASP:HA	1.99	0.43
1:E:1005:ASP:OD2	1:E:1006:SER:N	2.51	0.43
1:F:629:VAL:HG11	1:F:704:MET:CE	2.48	0.43
1:A:813:VAL:HG11	1:B:956:GLN:CD	2.39	0.43
1:C:629:VAL:HG11	1:C:704:MET:CE	2.48	0.43
1:D:431:ASP:OD1	1:D:432:ASN:N	2.52	0.43
1:D:1262:ASN:OD1	1:D:1263:ASP:N	2.52	0.43
1:E:1329:GLU:N	1:E:1329:GLU:OE2	2.52	0.43
1:A:115:ALA:HA	1:A:330:LEU:HD13	2.00	0.43
1:B:447:PRO:HG2	1:C:858:LEU:HG	2.00	0.43
1:C:1230:ASP:OD1	1:C:1231:LEU:N	2.52	0.43
1:D:136:ALA:O	1:D:182:LEU:HD11	2.19	0.43
1:F:1202:GLN:HG2	1:F:1230:ASP:HA	1.99	0.43
1:C:605:LEU:HD23	1:C:605:LEU:HA	1.89	0.43
1:D:471:GLY:O	1:D:856:SER:HB3	2.19	0.43
1:D:813:VAL:HG11	1:E:956:GLN:CD	2.39	0.43
1:E:1262:ASN:OD1	1:E:1263:ASP:N	2.52	0.43
1:F:620:VAL:O	1:F:726:GLY:HA3	2.19	0.43
1:A:471:GLY:O	1:A:856:SER:HB3	2.19	0.43
1:C:431:ASP:OD1	1:C:432:ASN:N	2.52	0.43
1:D:1274:GLU:HB3	1:D:1337:GLU:HB3	2.00	0.43
1:F:42:PHE:CE1	1:F:65:ILE:HD12	2.54	0.43
1:F:431:ASP:OD1	1:F:432:ASN:N	2.52	0.43
1:A:620:VAL:O	1:A:726:GLY:HA3	2.19	0.43
1:A:1245:ILE:HD12	1:A:1245:ILE:H	1.83	0.43
1:B:471:GLY:O	1:B:856:SER:HB3	2.19	0.43
1:B:620:VAL:O	1:B:726:GLY:HA3	2.18	0.43
1:A:1230:ASP:OD1	1:A:1231:LEU:N	2.52	0.43
1:B:1262:ASN:OD1	1:B:1263:ASP:N	2.52	0.43

Continued on next page...

Continued from previous page...

Atom-1	Atom-2	Interatomic distance (Å)	Clash overlap (Å)
1:B:1329:GLU:N	1:B:1329:GLU:OE2	2.52	0.43
1:C:886:PHE:HZ	1:C:889:LEU:HD13	1.84	0.43
1:C:1262:ASN:OD1	1:C:1263:ASP:N	2.52	0.43
1:D:313:ASP:OD1	1:D:314:THR:N	2.47	0.43
1:D:525:THR:HG21	1:D:555:ILE:CD1	2.48	0.43
1:D:886:PHE:HZ	1:D:889:LEU:HD13	1.84	0.43
1:F:469:THR:HG22	1:F:826:HIS:CE1	2.53	0.43
1:F:1134:ARG:HH11	1:F:1176:LEU:HD21	1.84	0.43
1:A:431:ASP:OD1	1:A:432:ASN:N	2.52	0.42
1:B:431:ASP:OD1	1:B:432:ASN:N	2.52	0.42
1:B:1230:ASP:OD1	1:B:1231:LEU:N	2.52	0.42
1:C:50:PHE:HB3	1:C:285:LEU:HD12	2.00	0.42
1:D:115:ALA:HA	1:D:330:LEU:HD13	2.00	0.42
1:D:629:VAL:HG11	1:D:704:MET:CE	2.49	0.42
1:E:886:PHE:HZ	1:E:889:LEU:HD13	1.84	0.42
1:F:87:VAL:HG12	1:F:143:GLU:HB3	2.01	0.42
1:C:1274:GLU:HB3	1:C:1337:GLU:HB3	2.01	0.42
1:D:469:THR:HG22	1:D:826:HIS:CE1	2.55	0.42
1:D:620:VAL:O	1:D:726:GLY:HA3	2.19	0.42
1:E:431:ASP:OD1	1:E:432:ASN:N	2.52	0.42
1:E:629:VAL:HG11	1:E:704:MET:CE	2.49	0.42
1:E:1134:ARG:HH11	1:E:1176:LEU:HD21	1.84	0.42
1:F:1262:ASN:OD1	1:F:1263:ASP:N	2.52	0.42
1:B:110:ILE:O	1:B:113:SER:OG	2.30	0.42
1:B:886:PHE:O	1:C:1301:THR:CG2	2.64	0.42
1:C:999:GLU:HG2	1:D:1304:ARG:NH1	2.34	0.42
1:F:1274:GLU:HB3	1:F:1337:GLU:HB3	2.01	0.42
1:A:136:ALA:O	1:A:182:LEU:HD11	2.19	0.42
1:A:886:PHE:HZ	1:A:889:LEU:HD13	1.84	0.42
1:A:1134:ARG:HH11	1:A:1176:LEU:HD21	1.85	0.42
1:C:136:ALA:O	1:C:182:LEU:HD11	2.19	0.42
1:D:1134:ARG:HH11	1:D:1176:LEU:HD21	1.85	0.42
1:E:469:THR:HG22	1:E:826:HIS:CE1	2.54	0.42
1:E:1230:ASP:OD1	1:E:1231:LEU:N	2.52	0.42
1:A:1304:ARG:NH1	1:F:999:GLU:HB3	2.34	0.42
1:B:130:SER:OG	1:B:144:THR:O	2.28	0.42
1:B:886:PHE:HZ	1:B:889:LEU:HD13	1.84	0.42
1:C:1038:ASN:OD1	1:C:1039:ALA:N	2.53	0.42
1:D:1038:ASN:OD1	1:D:1039:ALA:N	2.53	0.42
1:E:153:ILE:HD13	1:E:164:GLN:HB2	2.02	0.42
1:E:629:VAL:HG11	1:E:704:MET:HE3	2.02	0.42

Continued on next page...

Continued from previous page...

Atom-1	Atom-2	Interatomic distance (Å)	Clash overlap (Å)
1:A:1038:ASN:OD1	1:A:1039:ALA:N	2.53	0.42
1:A:1262:ASN:OD1	1:A:1263:ASP:N	2.52	0.42
1:B:114:THR:HG21	1:B:332:LEU:HD23	2.02	0.42
1:B:268:ASP:OD1	1:B:268:ASP:N	2.52	0.42
1:B:629:VAL:HG11	1:B:704:MET:HE3	2.02	0.42
1:B:1134:ARG:HH11	1:B:1176:LEU:HD21	1.84	0.42
1:C:344:ASN:HB3	1:C:444:ASN:OD1	2.19	0.42
1:C:680:LEU:HD13	1:C:684:VAL:HG11	2.01	0.42
1:D:1230:ASP:OD1	1:D:1231:LEU:N	2.52	0.42
1:E:471:GLY:O	1:E:856:SER:HB3	2.19	0.42
1:E:1054:ILE:HG23	1:E:1062:GLU:OE1	2.20	0.42
1:F:268:ASP:OD1	1:F:268:ASP:N	2.53	0.42
1:F:886:PHE:HZ	1:F:889:LEU:HD13	1.84	0.42
1:A:1105:ASP:OD2	1:A:1106:SER:N	2.53	0.42
1:B:153:ILE:HD13	1:B:164:GLN:HB2	2.02	0.42
1:B:629:VAL:HG11	1:B:704:MET:CE	2.49	0.42
1:D:1054:ILE:HG23	1:D:1062:GLU:OE1	2.20	0.42
1:F:580:ILE:HG12	1:F:717:VAL:HG12	2.02	0.42
1:A:1321:GLU:OE1	1:A:1321:GLU:N	2.52	0.42
1:B:55:SER:HB2	1:B:257:ASP:O	2.20	0.42
1:B:966:ASP:HB3	1:B:973:THR:OG1	2.20	0.42
1:E:1038:ASN:OD1	1:E:1039:ALA:N	2.53	0.42
1:C:620:VAL:O	1:C:726:GLY:HA3	2.19	0.42
1:C:1134:ARG:HH11	1:C:1176:LEU:HD21	1.84	0.42
1:D:344:ASN:HB3	1:D:444:ASN:OD1	2.20	0.42
1:E:69:ILE:HD12	1:E:98:TRP:NE1	2.35	0.42
1:E:268:ASP:OD1	1:E:268:ASP:N	2.52	0.42
1:F:1038:ASN:OD1	1:F:1039:ALA:N	2.53	0.42
1:F:1054:ILE:HG23	1:F:1062:GLU:OE1	2.20	0.42
1:F:1230:ASP:OD1	1:F:1231:LEU:N	2.52	0.42
1:A:995:ASP:OD2	1:A:999:GLU:N	2.48	0.42
1:B:136:ALA:O	1:B:182:LEU:HD11	2.19	0.42
1:C:966:ASP:HB3	1:C:973:THR:OG1	2.20	0.42
1:D:1098:ILE:HD13	1:D:1136:PHE:CE1	2.55	0.42
1:E:136:ALA:O	1:E:182:LEU:HD11	2.19	0.42
1:E:1105:ASP:OD2	1:E:1106:SER:N	2.53	0.42
1:F:680:LEU:HD13	1:F:684:VAL:HG11	2.01	0.42
1:F:966:ASP:HB3	1:F:973:THR:OG1	2.20	0.42
1:F:1105:ASP:OD2	1:F:1106:SER:N	2.53	0.42
1:A:114:THR:HG21	1:A:332:LEU:HD23	2.01	0.41
1:A:268:ASP:OD1	1:A:268:ASP:N	2.52	0.41

Continued on next page...

Continued from previous page...

Atom-1	Atom-2	Interatomic distance (Å)	Clash overlap (Å)
1:A:344:ASN:HB3	1:A:444:ASN:OD1	2.19	0.41
1:A:469:THR:HG22	1:A:826:HIS:CE1	2.54	0.41
1:A:1329:GLU:OE2	1:A:1329:GLU:N	2.52	0.41
1:B:469:THR:HG22	1:B:826:HIS:CE1	2.55	0.41
1:C:42:PHE:CE1	1:C:65:ILE:HD12	2.55	0.41
1:D:966:ASP:HB3	1:D:973:THR:OG1	2.20	0.41
1:F:153:ILE:HD13	1:F:164:GLN:HB2	2.02	0.41
1:F:344:ASN:HB3	1:F:444:ASN:OD1	2.20	0.41
1:B:1105:ASP:OD2	1:B:1106:SER:N	2.53	0.41
1:C:268:ASP:OD1	1:C:268:ASP:N	2.53	0.41
1:C:332:LEU:O	1:C:336:LEU:HG	2.20	0.41
1:D:268:ASP:OD1	1:D:268:ASP:N	2.52	0.41
1:F:50:PHE:HB3	1:F:285:LEU:HD12	2.00	0.41
1:A:332:LEU:O	1:A:336:LEU:HG	2.20	0.41
1:B:84:ASN:HD22	1:C:421:GLU:HG2	1.85	0.41
1:B:1038:ASN:OD1	1:B:1039:ALA:N	2.53	0.41
1:B:1098:ILE:HD13	1:B:1136:PHE:CE1	2.55	0.41
1:C:1105:ASP:OD2	1:C:1106:SER:N	2.53	0.41
1:C:1329:GLU:N	1:C:1329:GLU:OE2	2.52	0.41
1:E:84:ASN:HD22	1:F:421:GLU:HG2	1.85	0.41
1:E:1098:ILE:HD13	1:E:1136:PHE:CE1	2.55	0.41
1:F:197:ALA:HB2	1:F:226:PRO:HG3	2.03	0.41
1:F:310:PHE:CE2	1:F:401:SER:HB2	2.56	0.41
1:A:1098:ILE:HD13	1:A:1136:PHE:CE1	2.55	0.41
1:B:50:PHE:HB3	1:B:285:LEU:HD12	2.02	0.41
1:C:1239:ASP:OD1	1:C:1243:TYR:OH	2.25	0.41
1:D:1329:GLU:OE2	1:D:1329:GLU:N	2.53	0.41
1:E:114:THR:HG21	1:E:332:LEU:HD23	2.02	0.41
1:E:313:ASP:OD2	1:E:331:THR:HG23	2.21	0.41
1:E:966:ASP:HB3	1:E:973:THR:OG1	2.20	0.41
1:E:1075:ILE:HD12	1:E:1139:MET:HE1	2.03	0.41
1:F:136:ALA:O	1:F:182:LEU:HD11	2.19	0.41
1:B:65:ILE:HG12	1:B:97:ASN:CG	2.41	0.41
1:B:1038:ASN:OD1	1:B:1040:ALA:N	2.45	0.41
1:D:114:THR:HG21	1:D:332:LEU:HD23	2.01	0.41
1:D:1105:ASP:OD2	1:D:1106:SER:N	2.53	0.41
1:A:42:PHE:CE1	1:A:65:ILE:HD12	2.56	0.41
1:A:966:ASP:HB3	1:A:973:THR:OG1	2.20	0.41
1:B:244:ASN:HA	1:B:249:VAL:HG12	2.03	0.41
1:C:69:ILE:HD12	1:C:98:TRP:NE1	2.36	0.41
1:C:749:GLU:HG2	1:C:751:GLY:O	2.21	0.41

Continued on next page...

Continued from previous page...

Atom-1	Atom-2	Interatomic distance (Å)	Clash overlap (Å)
1:D:853:ASN:HA	1:D:860:ASP:OD2	2.21	0.41
1:E:310:PHE:CE2	1:E:401:SER:HB2	2.55	0.41
1:E:853:ASN:HA	1:E:860:ASP:OD2	2.20	0.41
1:F:65:ILE:HG12	1:F:97:ASN:CG	2.41	0.41
1:F:115:ALA:HA	1:F:330:LEU:HD13	2.02	0.41
1:A:65:ILE:HG12	1:A:97:ASN:CG	2.41	0.41
1:A:230:LEU:HD13	1:A:230:LEU:HA	1.94	0.41
1:A:762:GLU:O	1:A:788:SER:HA	2.21	0.41
1:B:310:PHE:CE2	1:B:401:SER:HB2	2.56	0.41
1:B:313:ASP:OD2	1:B:331:THR:HG23	2.21	0.41
1:C:310:PHE:CE2	1:C:401:SER:HB2	2.56	0.41
1:D:508:THR:OG1	1:D:741:GLN:HG2	2.21	0.41
1:F:762:GLU:O	1:F:788:SER:HA	2.21	0.41
1:A:55:SER:HB2	1:A:257:ASP:O	2.21	0.41
1:B:69:ILE:HD12	1:B:98:TRP:NE1	2.35	0.41
1:B:469:THR:OG1	1:B:472:GLN:OE1	2.39	0.41
1:B:1054:ILE:HG23	1:B:1062:GLU:OE1	2.20	0.41
1:C:197:ALA:HB2	1:C:226:PRO:HG3	2.03	0.41
1:D:69:ILE:HD12	1:D:98:TRP:NE1	2.36	0.41
1:D:1069:LEU:O	1:D:1154:ASN:ND2	2.47	0.41
1:E:50:PHE:HB3	1:E:285:LEU:HD12	2.02	0.41
1:E:130:SER:OG	1:E:144:THR:O	2.28	0.41
1:E:332:LEU:O	1:E:336:LEU:HG	2.20	0.41
1:F:469:THR:OG1	1:F:472:GLN:OE1	2.39	0.41
1:A:50:PHE:HB3	1:A:285:LEU:HD12	2.02	0.41
1:A:244:ASN:HA	1:A:249:VAL:HG12	2.03	0.41
1:A:360:VAL:HG12	1:A:361:VAL:HG23	2.03	0.41
1:A:508:THR:OG1	1:A:741:GLN:HG2	2.21	0.41
1:B:54:MET:HA	1:B:285:LEU:HD21	2.03	0.41
1:C:115:ALA:HA	1:C:330:LEU:HD13	2.02	0.41
1:C:313:ASP:OD2	1:C:331:THR:HG23	2.21	0.41
1:C:580:ILE:HG12	1:C:717:VAL:HG12	2.02	0.41
1:C:1098:ILE:HD13	1:C:1136:PHE:CE1	2.55	0.41
1:D:55:SER:HB2	1:D:257:ASP:O	2.21	0.41
1:D:332:LEU:O	1:D:336:LEU:HG	2.20	0.41
1:D:469:THR:OG1	1:D:472:GLN:OE1	2.39	0.41
1:F:1098:ILE:HD13	1:F:1136:PHE:CE1	2.55	0.41
1:F:1341:TRP:CE3	1:F:1353:ASP:HB3	2.56	0.41
1:A:313:ASP:OD2	1:A:331:THR:HG23	2.21	0.41
1:A:469:THR:OG1	1:A:472:GLN:OE1	2.39	0.41
1:C:853:ASN:HA	1:C:860:ASP:OD2	2.21	0.41

Continued on next page...

Continued from previous page...

Atom-1	Atom-2	Interatomic distance (Å)	Clash overlap (Å)
1:C:1054:ILE:HG23	1:C:1062:GLU:OE1	2.20	0.41
1:E:55:SER:HB2	1:E:257:ASP:O	2.21	0.41
1:F:114:THR:HG21	1:F:332:LEU:HD23	2.02	0.41
1:F:313:ASP:OD2	1:F:331:THR:HG23	2.21	0.41
1:A:1087:GLU:CG	1:F:804:ASN:HD21	2.34	0.40
1:B:508:THR:OG1	1:B:741:GLN:HG2	2.21	0.40
1:C:153:ILE:HD13	1:C:164:GLN:HB2	2.02	0.40
1:C:469:THR:OG1	1:C:472:GLN:OE1	2.39	0.40
1:D:605:LEU:HD23	1:D:605:LEU:HA	1.88	0.40
1:E:383:ASN:ND2	1:E:432:ASN:OD1	2.55	0.40
1:E:1038:ASN:OD1	1:E:1040:ALA:N	2.45	0.40
1:F:69:ILE:HD12	1:F:98:TRP:NE1	2.36	0.40
1:F:749:GLU:HG2	1:F:751:GLY:O	2.21	0.40
1:A:383:ASN:ND2	1:A:432:ASN:OD1	2.55	0.40
1:A:1074:ARG:HA	1:A:1149:PHE:O	2.21	0.40
1:A:1341:TRP:CE3	1:A:1353:ASP:HB3	2.56	0.40
1:B:1341:TRP:CE3	1:B:1353:ASP:HB3	2.56	0.40
1:D:42:PHE:CE1	1:D:65:ILE:HD12	2.56	0.40
1:D:61:GLU:HG3	1:D:101:TYR:CE1	2.57	0.40
1:D:65:ILE:HG12	1:D:97:ASN:CG	2.41	0.40
1:D:313:ASP:OD2	1:D:331:THR:HG23	2.21	0.40
1:E:1074:ARG:HA	1:E:1149:PHE:O	2.22	0.40
1:E:1341:TRP:CE3	1:E:1353:ASP:HB3	2.56	0.40
1:F:332:LEU:O	1:F:336:LEU:HG	2.20	0.40
1:A:69:ILE:HD12	1:A:98:TRP:NE1	2.36	0.40
1:A:853:ASN:HA	1:A:860:ASP:OD2	2.21	0.40
1:B:115:ALA:HA	1:B:330:LEU:HD13	2.03	0.40
1:B:1205:ILE:CD1	1:B:1228:THR:HG22	2.52	0.40
1:C:114:THR:HG21	1:C:332:LEU:HD23	2.02	0.40
1:D:50:PHE:HB3	1:D:285:LEU:HD12	2.02	0.40
1:D:1341:TRP:CE3	1:D:1353:ASP:HB3	2.56	0.40
1:E:54:MET:HA	1:E:285:LEU:HD21	2.03	0.40
1:E:508:THR:OG1	1:E:741:GLN:HG2	2.21	0.40
1:E:762:GLU:O	1:E:788:SER:HA	2.21	0.40
1:F:130:SER:OG	1:F:144:THR:O	2.28	0.40
1:A:61:GLU:HG3	1:A:101:TYR:CE1	2.57	0.40
1:A:1054:ILE:HG23	1:A:1062:GLU:OE1	2.20	0.40
1:B:624:PHE:HB2	1:B:723:PHE:HB2	2.02	0.40
1:B:858:LEU:HD23	1:B:858:LEU:HA	1.93	0.40
1:C:508:THR:OG1	1:C:741:GLN:HG2	2.22	0.40
1:E:65:ILE:HG12	1:E:97:ASN:CG	2.41	0.40

Continued on next page...

Continued from previous page...

Atom-1	Atom-2	Interatomic distance (Å)	Clash overlap (Å)
1:E:624:PHE:HB2	1:E:723:PHE:HB2	2.02	0.40
1:E:886:PHE:O	1:F:1301:THR:CG2	2.63	0.40
1:F:333:ARG:HG3	1:F:334:THR:HG23	2.03	0.40
1:F:1019:ASP:OD2	1:F:1072:HIS:HD2	2.05	0.40
1:B:61:GLU:HG3	1:B:101:TYR:CE1	2.57	0.40
1:B:853:ASN:HA	1:B:860:ASP:OD2	2.21	0.40
1:E:244:ASN:HA	1:E:249:VAL:HG12	2.03	0.40
1:F:853:ASN:HA	1:F:860:ASP:OD2	2.21	0.40

There are no symmetry-related clashes.

5.3 Torsion angles [i](#)

5.3.1 Protein backbone [i](#)

In the following table, the Percentiles column shows the percent Ramachandran outliers of the chain as a percentile score with respect to all PDB entries followed by that with respect to all EM entries.

The Analysed column shows the number of residues for which the backbone conformation was analysed, and the total number of residues.

Mol	Chain	Analysed	Favoured	Allowed	Outliers	Percentiles	
1	A	1325/1734 (76%)	1270 (96%)	55 (4%)	0	100	100
1	B	1325/1734 (76%)	1271 (96%)	54 (4%)	0	100	100
1	C	1325/1734 (76%)	1272 (96%)	53 (4%)	0	100	100
1	D	1325/1734 (76%)	1272 (96%)	53 (4%)	0	100	100
1	E	1325/1734 (76%)	1271 (96%)	54 (4%)	0	100	100
1	F	1325/1734 (76%)	1272 (96%)	53 (4%)	0	100	100
All	All	7950/10404 (76%)	7628 (96%)	322 (4%)	0	100	100

There are no Ramachandran outliers to report.

5.3.2 Protein sidechains [i](#)

In the following table, the Percentiles column shows the percent sidechain outliers of the chain as a percentile score with respect to all PDB entries followed by that with respect to all EM entries.

The Analysed column shows the number of residues for which the sidechain conformation was analysed, and the total number of residues.

Mol	Chain	Analysed	Rotameric	Outliers	Percentiles	
1	A	1100/1438 (76%)	1091 (99%)	9 (1%)	79	91
1	B	1100/1438 (76%)	1091 (99%)	9 (1%)	79	91
1	C	1100/1438 (76%)	1092 (99%)	8 (1%)	81	92
1	D	1100/1438 (76%)	1091 (99%)	9 (1%)	79	91
1	E	1100/1438 (76%)	1090 (99%)	10 (1%)	75	89
1	F	1100/1438 (76%)	1090 (99%)	10 (1%)	75	89
All	All	6600/8628 (76%)	6545 (99%)	55 (1%)	77	91

All (55) residues with a non-rotameric sidechain are listed below:

Mol	Chain	Res	Type
1	A	269	ARG
1	A	419	TYR
1	A	422	SER
1	A	495	LEU
1	A	499	ASP
1	A	565	ASN
1	A	578	ARG
1	A	1047	PHE
1	A	1330	ARG
1	B	269	ARG
1	B	419	TYR
1	B	422	SER
1	B	495	LEU
1	B	501	THR
1	B	565	ASN
1	B	578	ARG
1	B	1047	PHE
1	B	1330	ARG
1	C	269	ARG
1	C	274	ARG
1	C	419	TYR
1	C	495	LEU
1	C	565	ASN
1	C	578	ARG
1	C	1047	PHE
1	C	1330	ARG
1	D	269	ARG

Continued on next page...

Continued from previous page...

Mol	Chain	Res	Type
1	D	422	SER
1	D	495	LEU
1	D	499	ASP
1	D	501	THR
1	D	565	ASN
1	D	578	ARG
1	D	1047	PHE
1	D	1330	ARG
1	E	269	ARG
1	E	419	TYR
1	E	422	SER
1	E	495	LEU
1	E	501	THR
1	E	565	ASN
1	E	578	ARG
1	E	999	GLU
1	E	1047	PHE
1	E	1330	ARG
1	F	38	ASN
1	F	58	GLN
1	F	269	ARG
1	F	274	ARG
1	F	419	TYR
1	F	495	LEU
1	F	565	ASN
1	F	578	ARG
1	F	1047	PHE
1	F	1330	ARG

Sometimes sidechains can be flipped to improve hydrogen bonding and reduce clashes. All (73) such sidechains are listed below:

Mol	Chain	Res	Type
1	A	58	GLN
1	A	92	GLN
1	A	97	ASN
1	A	211	GLN
1	A	623	ASN
1	A	682	ASN
1	A	733	GLN
1	A	740	ASN
1	A	804	ASN
1	A	956	GLN

Continued on next page...

Continued from previous page...

Mol	Chain	Res	Type
1	A	1154	ASN
1	B	58	GLN
1	B	84	ASN
1	B	92	GLN
1	B	97	ASN
1	B	211	GLN
1	B	484	ASN
1	B	623	ASN
1	B	733	GLN
1	B	740	ASN
1	B	804	ASN
1	B	853	ASN
1	B	956	GLN
1	B	1083	ASN
1	B	1154	ASN
1	C	58	GLN
1	C	92	GLN
1	C	97	ASN
1	C	211	GLN
1	C	484	ASN
1	C	623	ASN
1	C	733	GLN
1	C	740	ASN
1	C	804	ASN
1	C	956	GLN
1	C	1083	ASN
1	C	1154	ASN
1	D	58	GLN
1	D	92	GLN
1	D	97	ASN
1	D	211	GLN
1	D	623	ASN
1	D	733	GLN
1	D	740	ASN
1	D	804	ASN
1	D	956	GLN
1	D	1083	ASN
1	D	1154	ASN
1	E	58	GLN
1	E	84	ASN
1	E	92	GLN
1	E	97	ASN

Continued on next page...

Continued from previous page...

Mol	Chain	Res	Type
1	E	211	GLN
1	E	484	ASN
1	E	623	ASN
1	E	733	GLN
1	E	740	ASN
1	E	804	ASN
1	E	853	ASN
1	E	956	GLN
1	E	1083	ASN
1	E	1154	ASN
1	F	58	GLN
1	F	92	GLN
1	F	97	ASN
1	F	211	GLN
1	F	623	ASN
1	F	733	GLN
1	F	740	ASN
1	F	804	ASN
1	F	956	GLN
1	F	1083	ASN
1	F	1154	ASN

5.3.3 RNA [i](#)

There are no RNA molecules in this entry.

5.4 Non-standard residues in protein, DNA, RNA chains [i](#)

There are no non-standard protein/DNA/RNA residues in this entry.

5.5 Carbohydrates [i](#)

There are no oligosaccharides in this entry.

5.6 Ligand geometry [i](#)

There are no ligands in this entry.

5.7 Other polymers [i](#)

There are no such residues in this entry.

5.8 Polymer linkage issues [i](#)

There are no chain breaks in this entry.

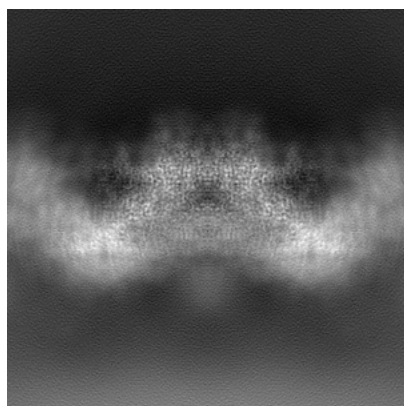
6 Map visualisation [i](#)

This section contains visualisations of the EMDB entry EMD-16483. These allow visual inspection of the internal detail of the map and identification of artifacts.

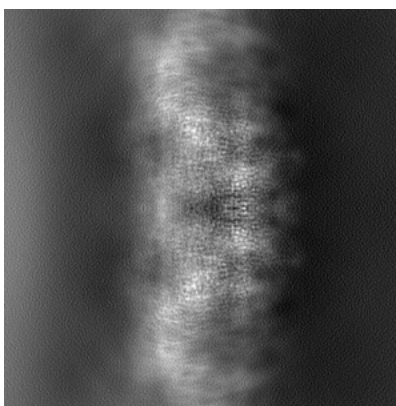
Images derived from a raw map, generated by summing the deposited half-maps, are presented below the corresponding image components of the primary map to allow further visual inspection and comparison with those of the primary map.

6.1 Orthogonal projections [i](#)

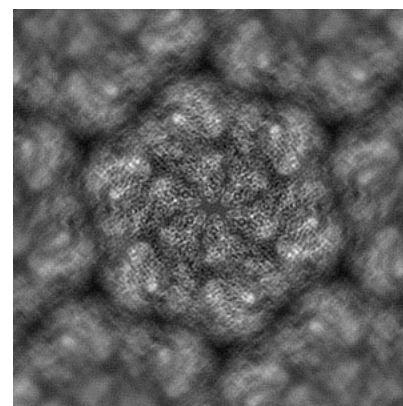
6.1.1 Primary map



X

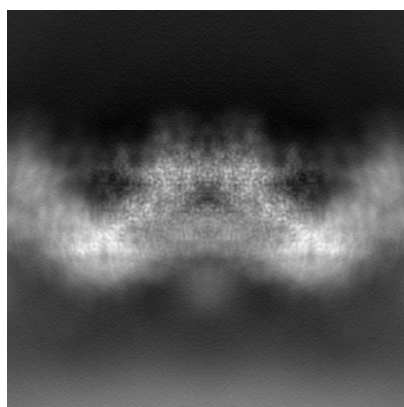


Y

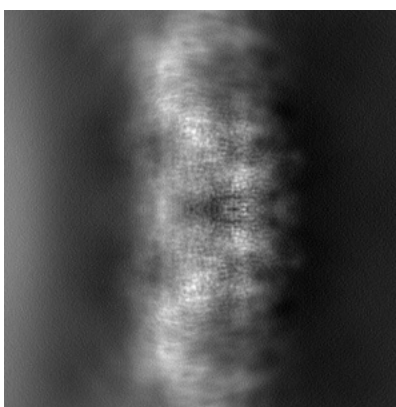


Z

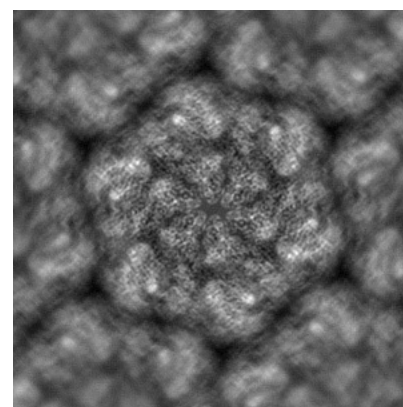
6.1.2 Raw map



X



Y

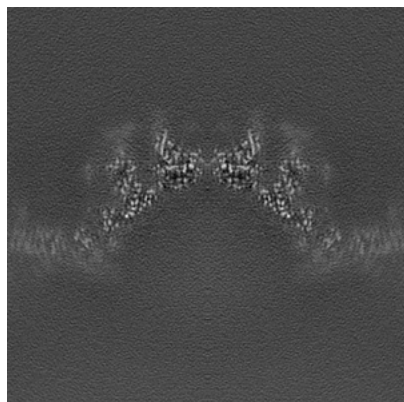


Z

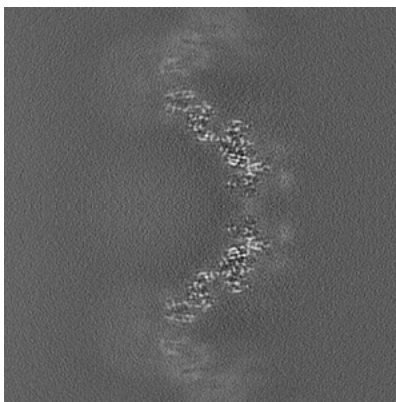
The images above show the map projected in three orthogonal directions.

6.2 Central slices [i](#)

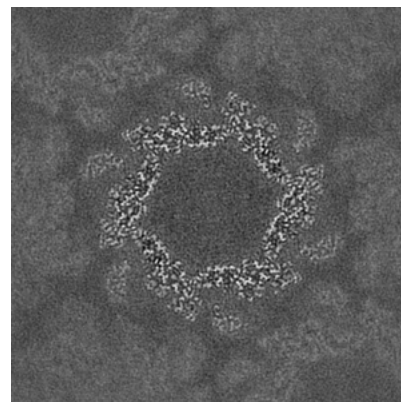
6.2.1 Primary map



X Index: 160

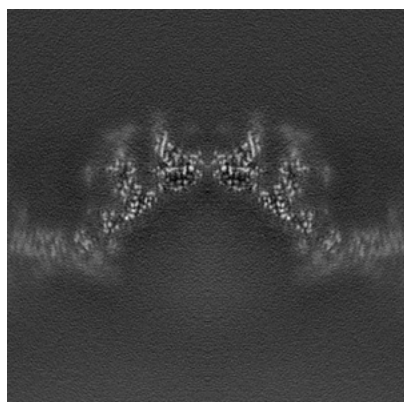


Y Index: 160

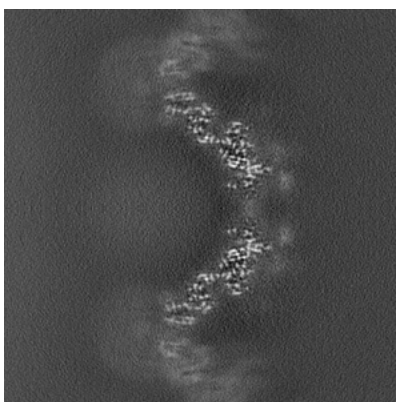


Z Index: 160

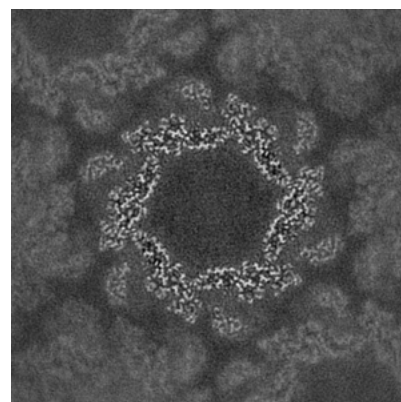
6.2.2 Raw map



X Index: 160



Y Index: 160

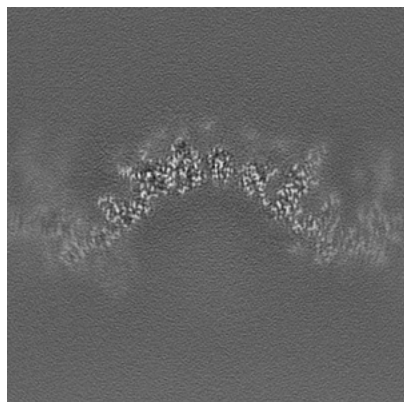


Z Index: 160

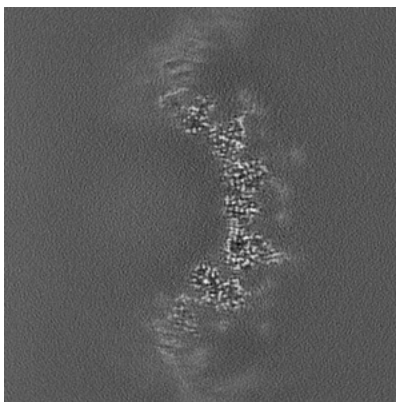
The images above show central slices of the map in three orthogonal directions.

6.3 Largest variance slices [i](#)

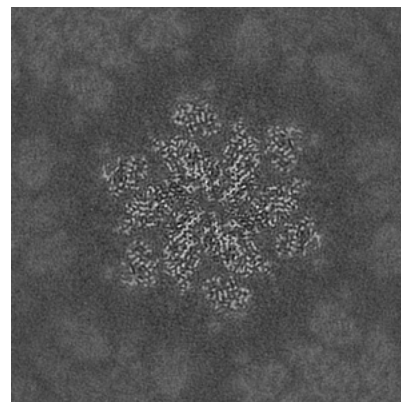
6.3.1 Primary map



X Index: 137

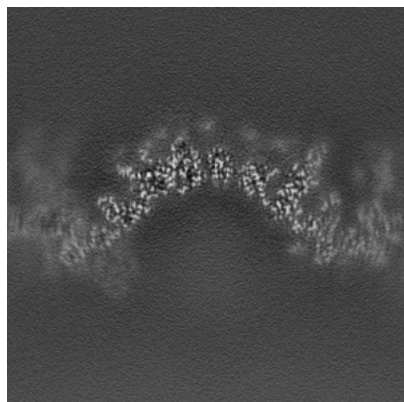


Y Index: 175

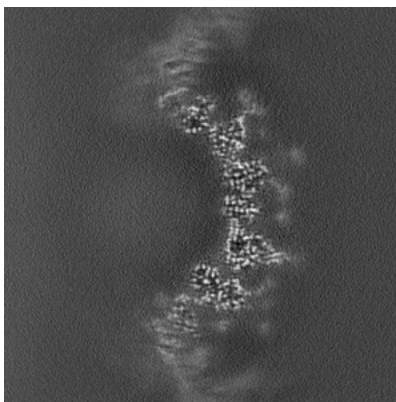


Z Index: 186

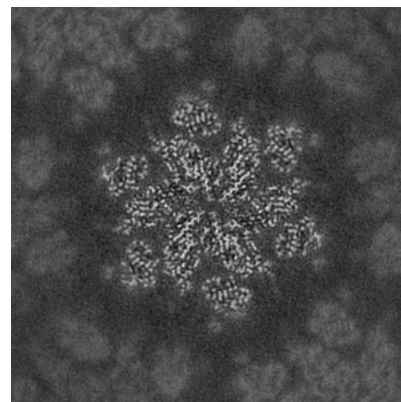
6.3.2 Raw map



X Index: 137



Y Index: 175

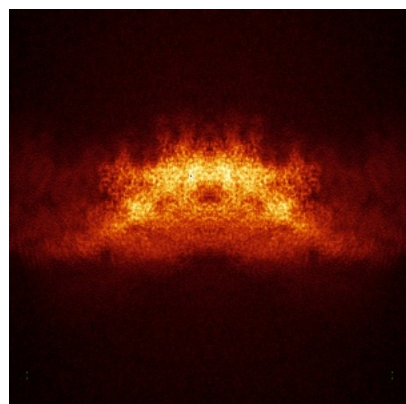


Z Index: 186

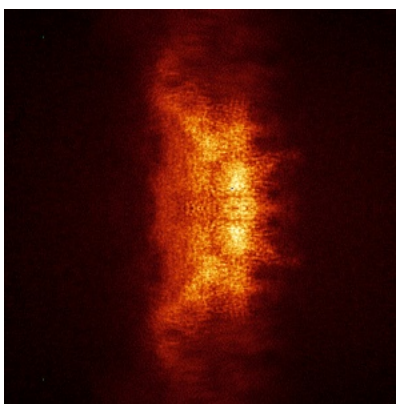
The images above show the largest variance slices of the map in three orthogonal directions.

6.4 Orthogonal standard-deviation projections (False-color) [i](#)

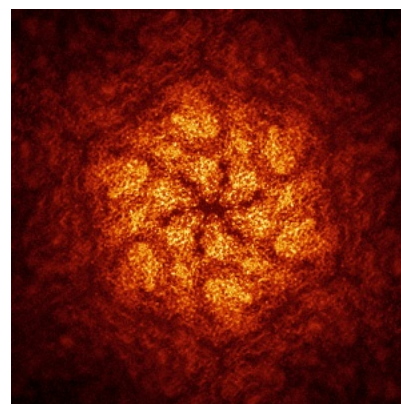
6.4.1 Primary map



X

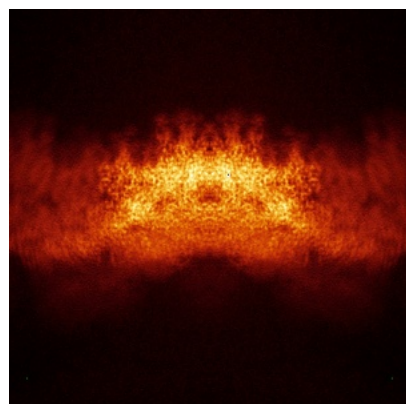


Y

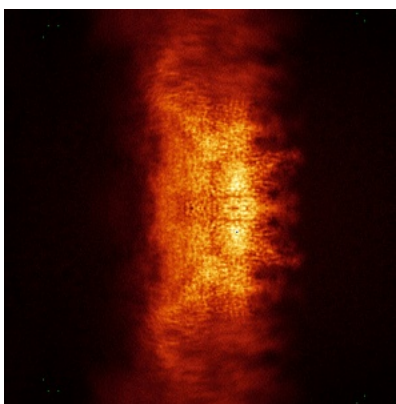


Z

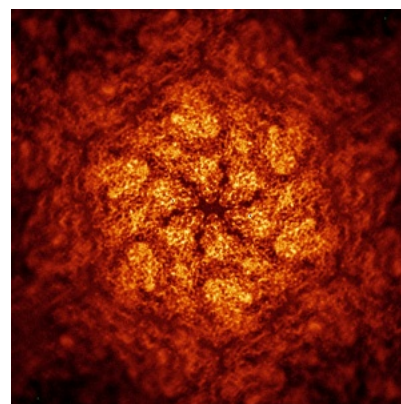
6.4.2 Raw map



X



Y

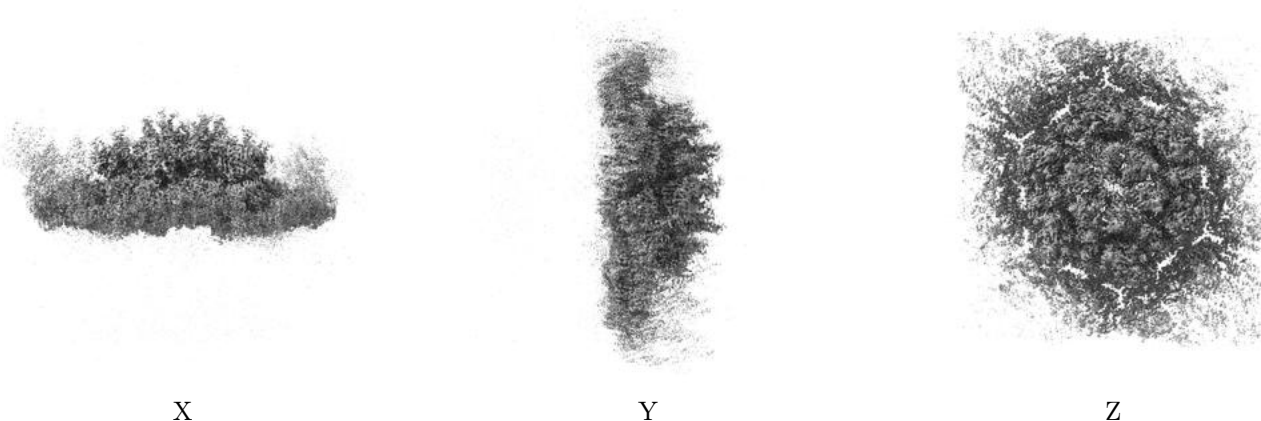


Z

The images above show the map standard deviation projections with false color in three orthogonal directions. Minimum values are shown in green, max in blue, and dark to light orange shades represent small to large values respectively.

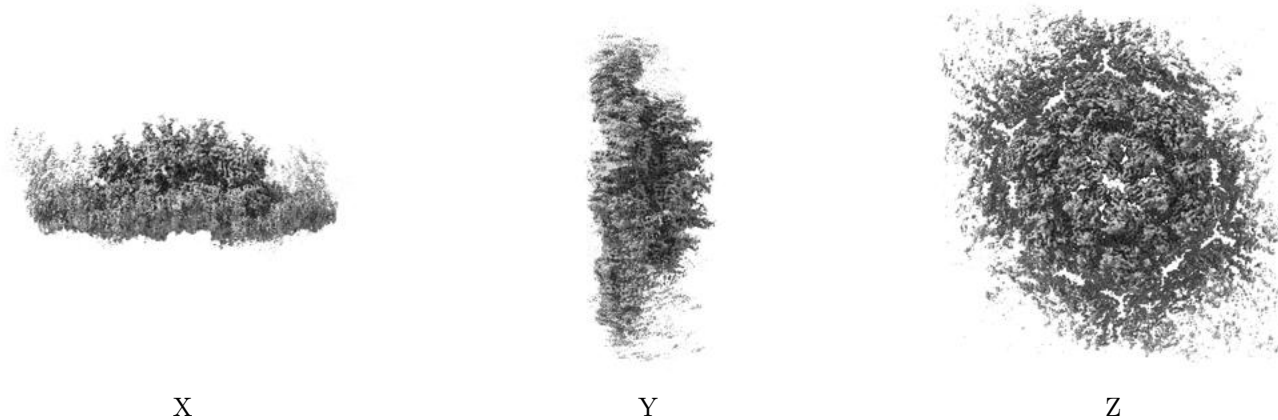
6.5 Orthogonal surface views [i](#)

6.5.1 Primary map



The images above show the 3D surface view of the map at the recommended contour level 0.01471. These images, in conjunction with the slice images, may facilitate assessment of whether an appropriate contour level has been provided.

6.5.2 Raw map



These images show the 3D surface of the raw map. The raw map's contour level was selected so that its surface encloses the same volume as the primary map does at its recommended contour level.

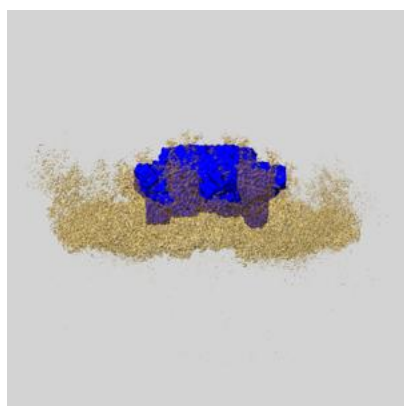
6.6 Mask visualisation [i](#)

This section shows the 3D surface view of the primary map at 50% transparency overlaid with the specified mask at 0% transparency

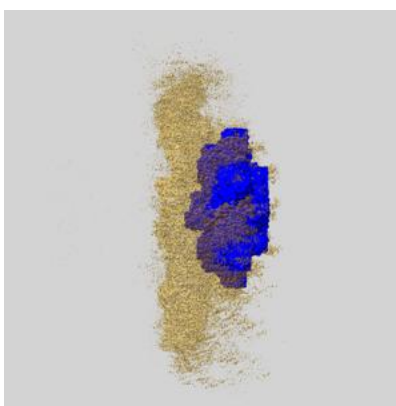
A mask typically either:

- Encompasses the whole structure
- Separates out a domain, a functional unit, a monomer or an area of interest from a larger structure

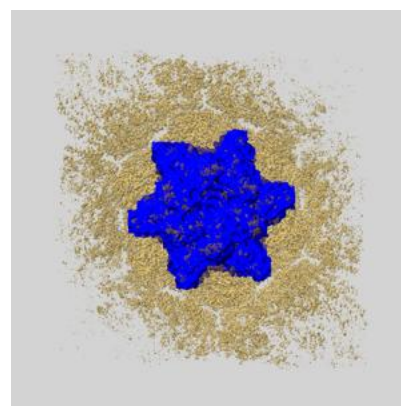
6.6.1 emd_16483_msk_1.map [i](#)



X



Y

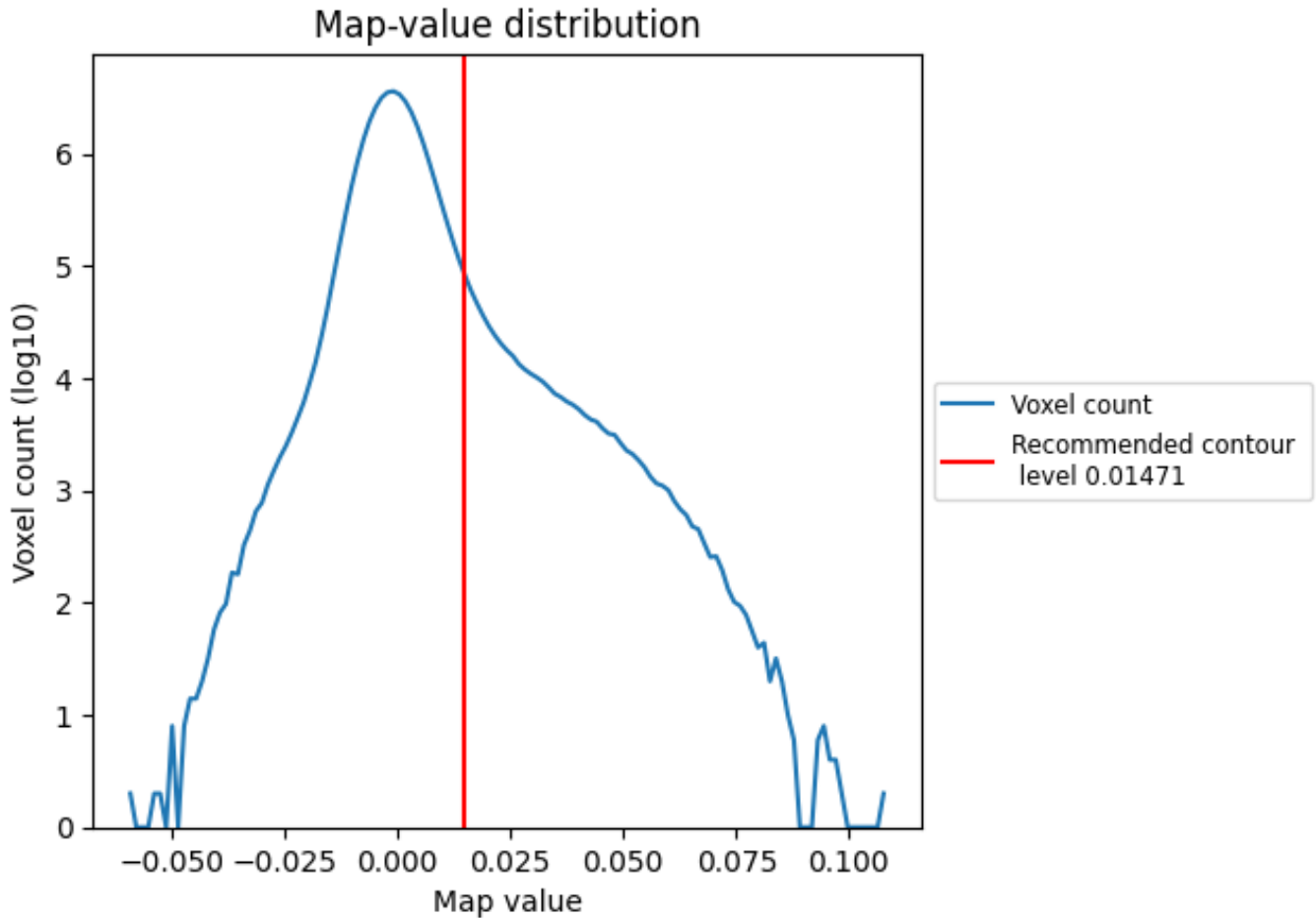


Z

7 Map analysis [i](#)

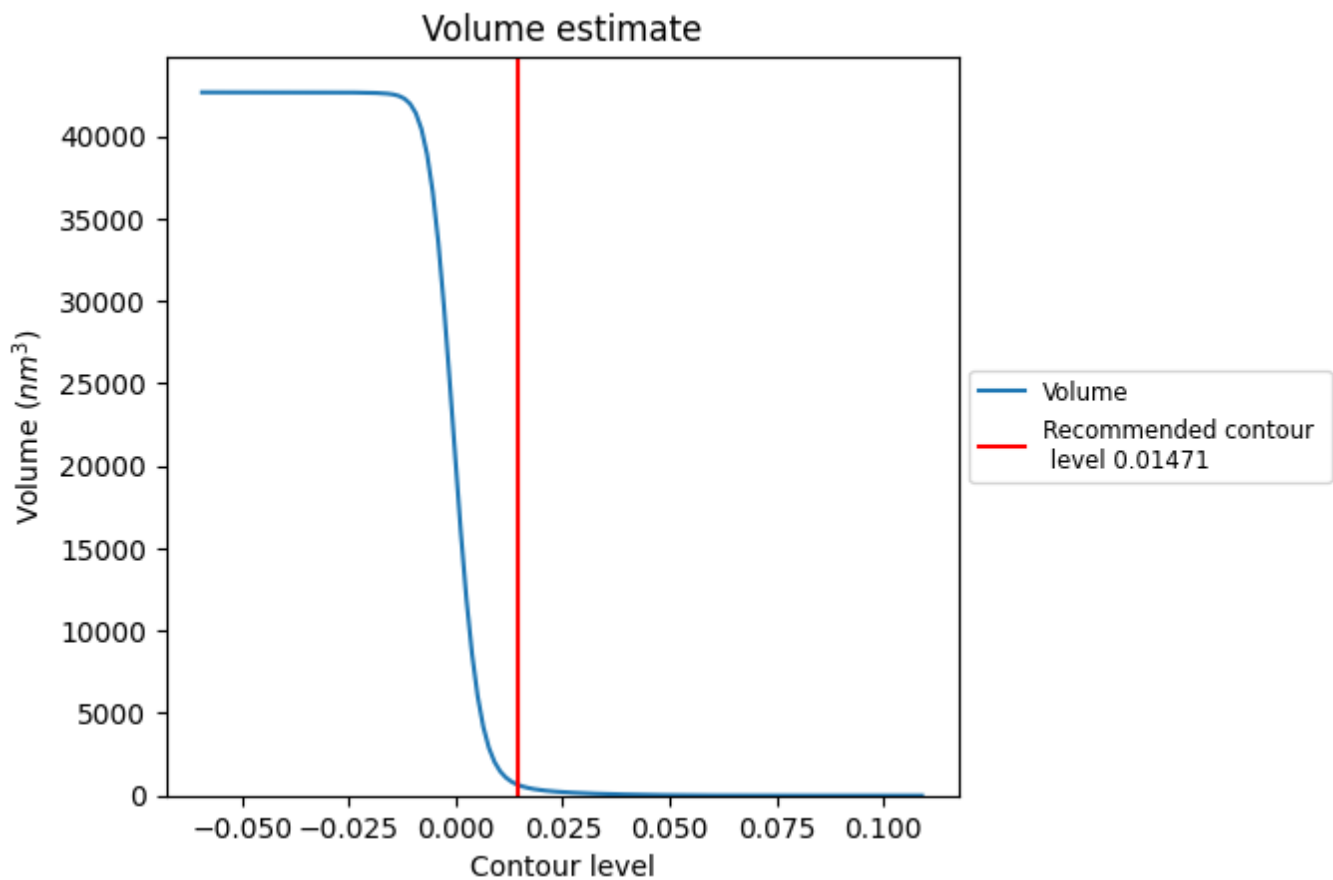
This section contains the results of statistical analysis of the map.

7.1 Map-value distribution [i](#)



The map-value distribution is plotted in 128 intervals along the x-axis. The y-axis is logarithmic. A spike in this graph at zero usually indicates that the volume has been masked.

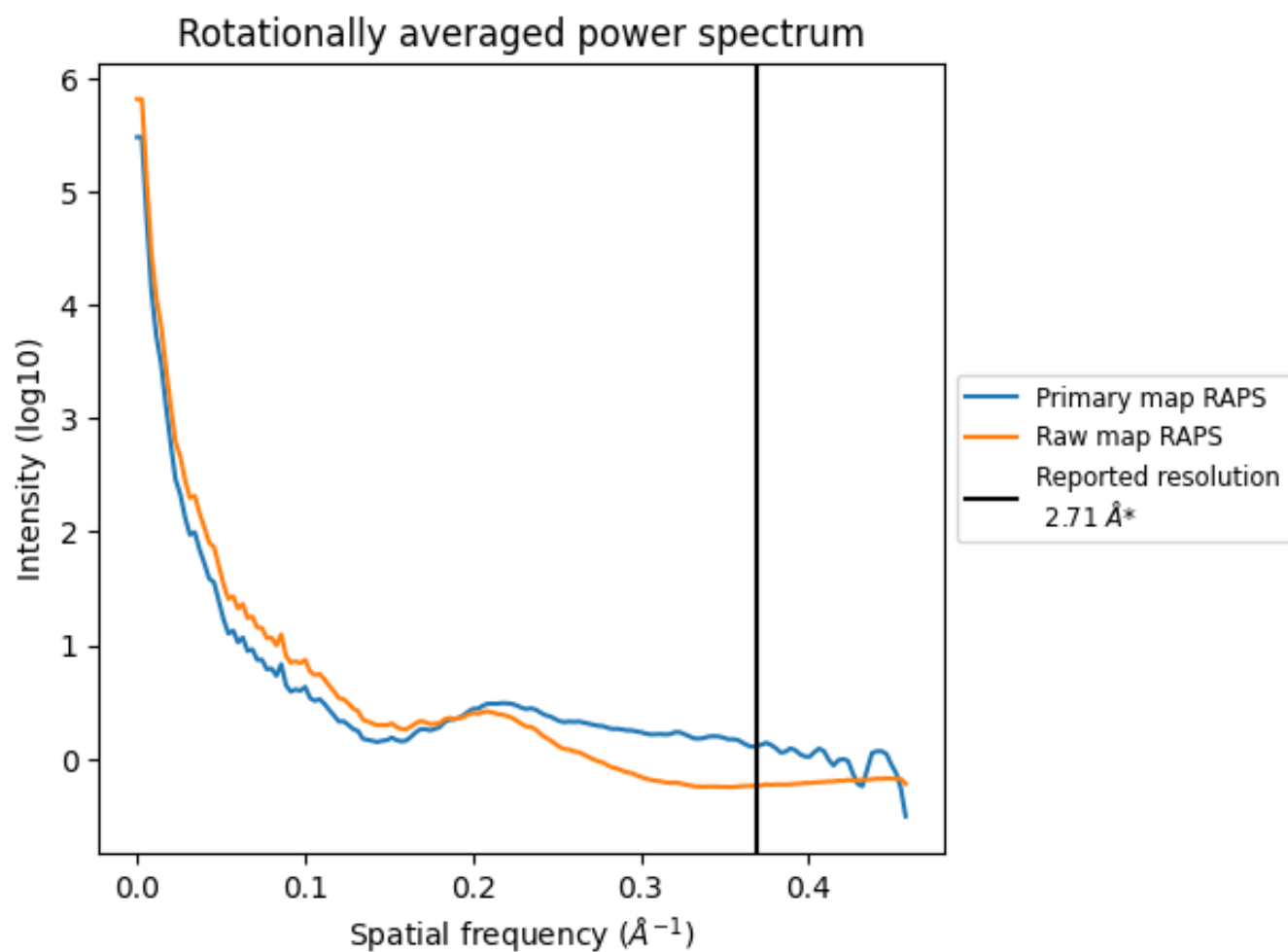
7.2 Volume estimate [i](#)



The volume at the recommended contour level is 638 nm³; this corresponds to an approximate mass of 577 kDa.

The volume estimate graph shows how the enclosed volume varies with the contour level. The recommended contour level is shown as a vertical line and the intersection between the line and the curve gives the volume of the enclosed surface at the given level.

7.3 Rotationally averaged power spectrum i

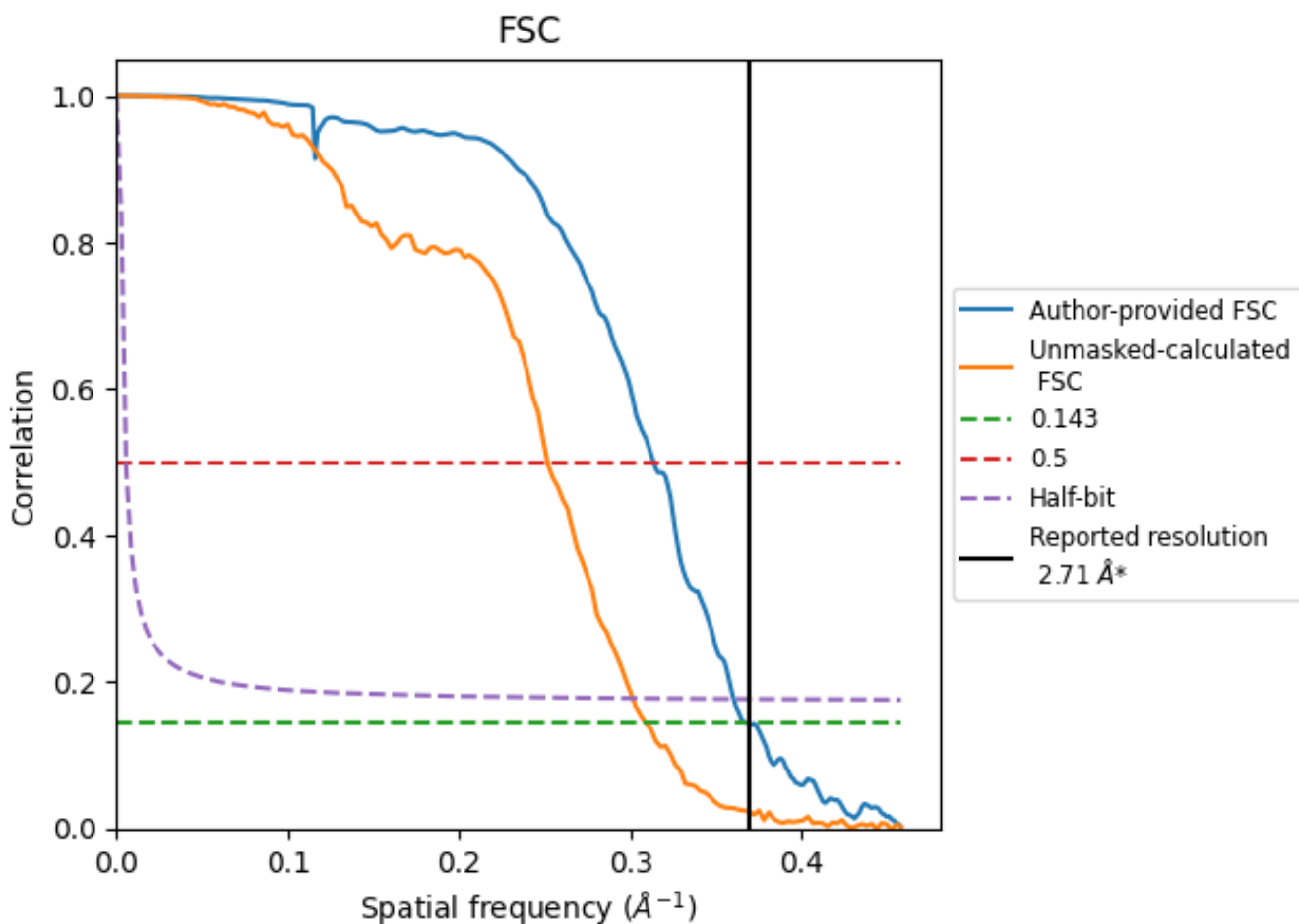


*Reported resolution corresponds to spatial frequency of 0.369 Å⁻¹

8 Fourier-Shell correlation [i](#)

Fourier-Shell Correlation (FSC) is the most commonly used method to estimate the resolution of single-particle and subtomogram-averaged maps. The shape of the curve depends on the imposed symmetry, mask and whether or not the two 3D reconstructions used were processed from a common reference. The reported resolution is shown as a black line. A curve is displayed for the half-bit criterion in addition to lines showing the 0.143 gold standard cut-off and 0.5 cut-off.

8.1 FSC [i](#)



*Reported resolution corresponds to spatial frequency of 0.369 Å⁻¹

8.2 Resolution estimates [i](#)

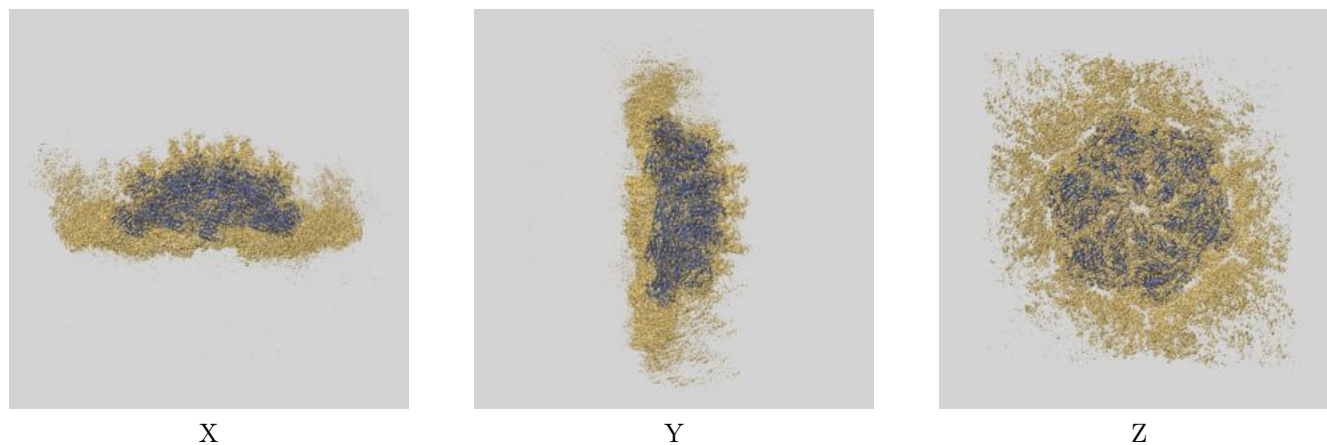
Resolution estimate (Å)	Estimation criterion (FSC cut-off)		
	0.143	0.5	Half-bit
Reported by author	2.71	-	-
Author-provided FSC curve	2.72	3.19	2.77
Unmasked-calculated*	3.24	3.98	3.32

*Resolution estimate based on FSC curve calculated by comparison of deposited half-maps. The value from deposited half-maps intersecting FSC 0.143 CUT-OFF 3.24 differs from the reported value 2.71 by more than 10 %

9 Map-model fit [i](#)

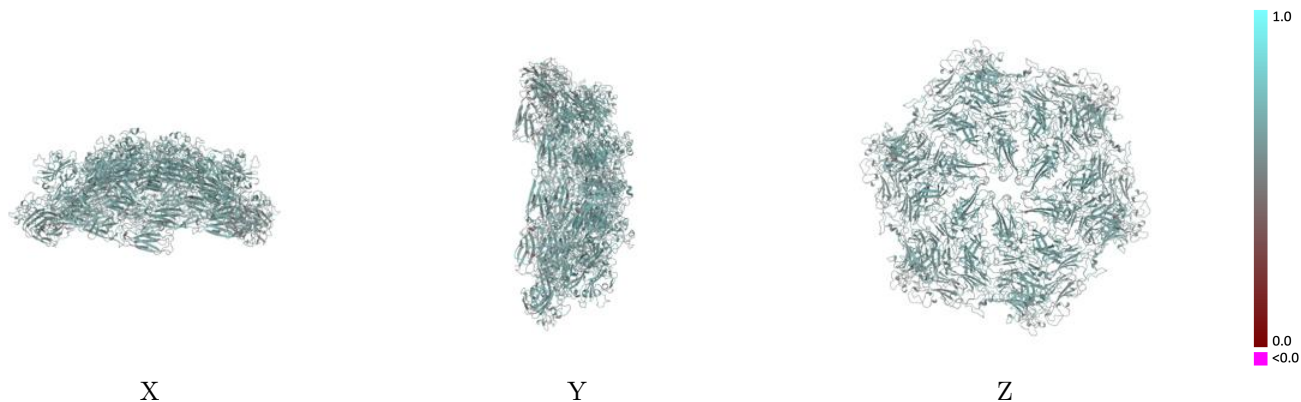
This section contains information regarding the fit between EMDB map EMD-16483 and PDB model 8C8L. Per-residue inclusion information can be found in section 3 on page 4.

9.1 Map-model overlay [i](#)



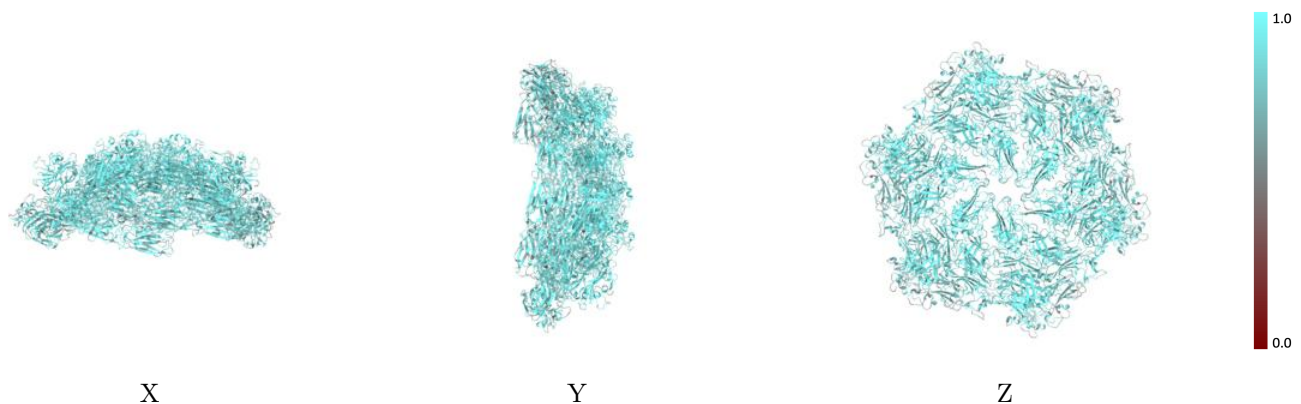
The images above show the 3D surface view of the map at the recommended contour level 0.01471 at 50% transparency in yellow overlaid with a ribbon representation of the model coloured in blue. These images allow for the visual assessment of the quality of fit between the atomic model and the map.

9.2 Q-score mapped to coordinate model [i](#)



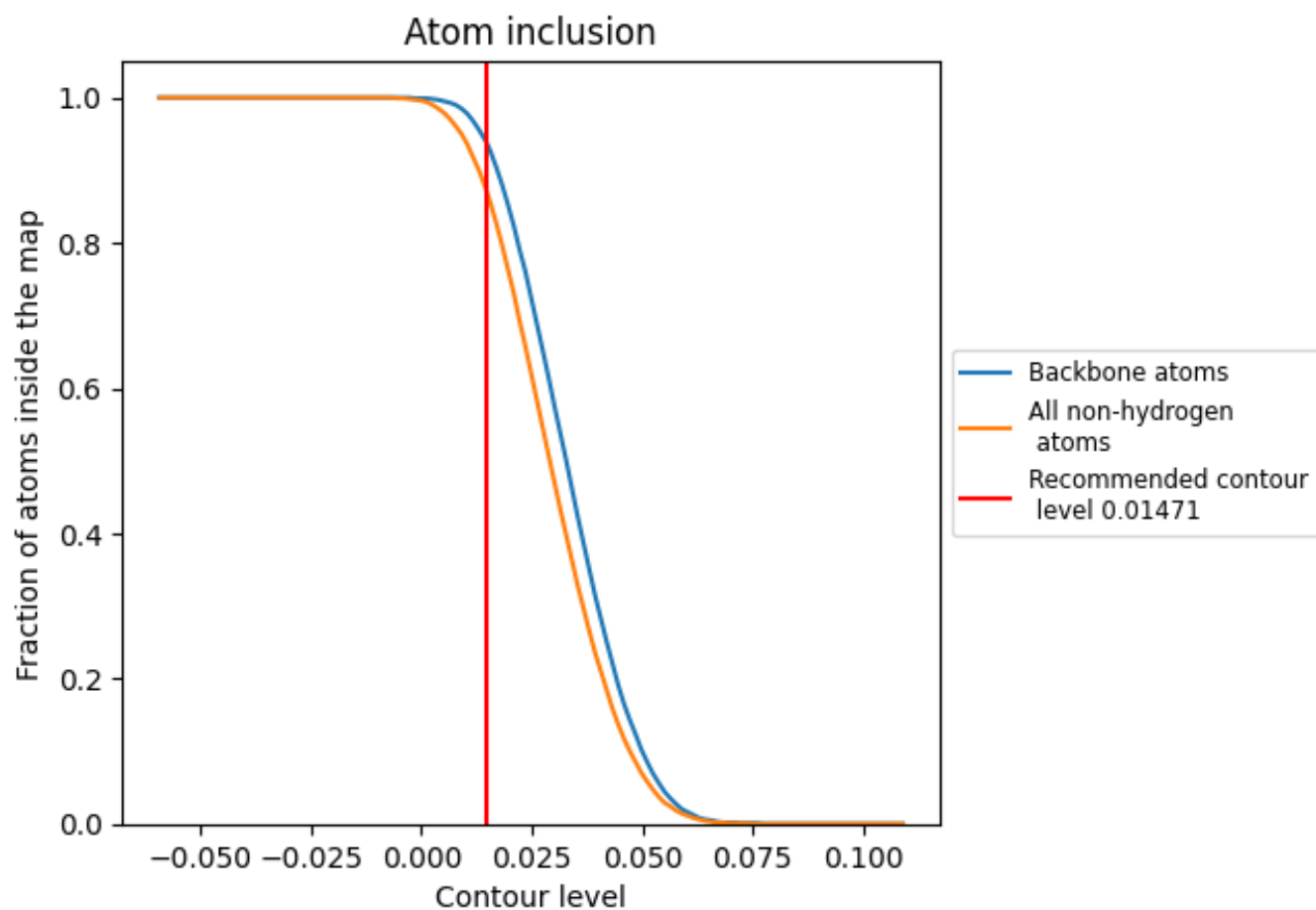
The images above show the model with each residue coloured according to its Q-score. This shows their resolvability in the map with higher Q-score values reflecting better resolvability. Please note: Q-score is calculating the resolvability of atoms, and thus high values are only expected at resolutions at which atoms can be resolved. Low Q-score values may therefore be expected for many entries.

9.3 Atom inclusion mapped to coordinate model [i](#)



The images above show the model with each residue coloured according to its atom inclusion. This shows to what extent they are inside the map at the recommended contour level (0.01471).



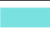











9.4 Atom inclusion [i](#)



At the recommended contour level, 94% of all backbone atoms, 87% of all non-hydrogen atoms, are inside the map.

9.5 Map-model fit summary

The table lists the average atom inclusion at the recommended contour level (0.01471) and Q-score for the entire model and for each chain.

Chain	Atom inclusion	Q-score
All	 0.8730	 0.5950
A	 0.8850	 0.6070
B	 0.8730	 0.5910
C	 0.8600	 0.5890
D	 0.8850	 0.6060
E	 0.8730	 0.5890
F	 0.8600	 0.5890

