



# Full wwPDB X-ray Structure Validation Report ⓘ

Jan 24, 2023 – 12:33 pm GMT

PDB ID : 8B8U  
Title : Crystal structure of JAK2 JH2-V617F in complex with HTS-A3  
Authors : Haikarainen, T.; Silvennoinen, O.  
Deposited on : 2022-10-05  
Resolution : 1.50 Å(reported)

This is a Full wwPDB X-ray Structure Validation Report for a publicly released PDB entry.

We welcome your comments at [validation@mail.wwpdb.org](mailto:validation@mail.wwpdb.org)

A user guide is available at

<https://www.wwpdb.org/validation/2017/XrayValidationReportHelp>

with specific help available everywhere you see the ⓘ symbol.

The types of validation reports are described at

<http://www.wwpdb.org/validation/2017/FAQs#types>.

---

The following versions of software and data (see [references ⓘ](#)) were used in the production of this report:

MolProbity : 4.02b-467  
Mogul : 1.8.4, CSD as541be (2020)  
Xtriage (Phenix) : 1.13  
EDS : 2.31.3  
buster-report : 1.1.7 (2018)  
Percentile statistics : 20191225.v01 (using entries in the PDB archive December 25th 2019)  
Refmac : 5.8.0158  
CCP4 : 7.0.044 (Gargrove)  
Ideal geometry (proteins) : Engh & Huber (2001)  
Ideal geometry (DNA, RNA) : Parkinson et al. (1996)  
Validation Pipeline (wwPDB-VP) : 2.31.3

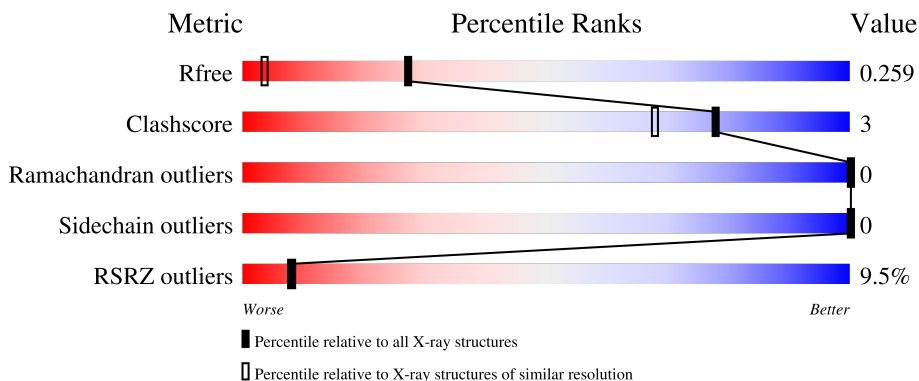
# 1 Overall quality at a glance

The following experimental techniques were used to determine the structure:

*X-RAY DIFFRACTION*

The reported resolution of this entry is 1.50 Å.

Percentile scores (ranging between 0-100) for global validation metrics of the entry are shown in the following graphic. The table shows the number of entries on which the scores are based.



Metric	Whole archive (#Entries)	Similar resolution (#Entries, resolution range(Å))
$R_{free}$	130704	2936 (1.50-1.50)
Clashscore	141614	3144 (1.50-1.50)
Ramachandran outliers	138981	3066 (1.50-1.50)
Sidechain outliers	138945	3064 (1.50-1.50)
RSRZ outliers	127900	2884 (1.50-1.50)

The table below summarises the geometric issues observed across the polymeric chains and their fit to the electron density. The red, orange, yellow and green segments of the lower bar indicate the fraction of residues that contain outliers for  $\geq 3$ , 2, 1 and 0 types of geometric quality criteria respectively. A grey segment represents the fraction of residues that are not modelled. The numeric value for each fraction is indicated below the corresponding segment, with a dot representing fractions  $\leq 5\%$ . The upper red bar (where present) indicates the fraction of residues that have poor fit to the electron density. The numeric value is given above the bar.

Mol	Chain	Length	Quality of chain
1	A	289	 7% 89% 6% 5%
1	B	289	 11% 89% 5% 6%

## 2 Entry composition i

There are 4 unique types of molecules in this entry. The entry contains 9204 atoms, of which 4331 are hydrogens and 0 are deuteriums.

In the tables below, the ZeroOcc column contains the number of atoms modelled with zero occupancy, the AltConf column contains the number of residues with at least one atom in alternate conformation and the Trace column contains the number of residues modelled with at most 2 atoms.

- Molecule 1 is a protein called Tyrosine-protein kinase JAK2.

Mol	Chain	Residues	Atoms						ZeroOcc	AltConf	Trace
			Total	C	H	N	O	S			
1	A	274	4371	1409	2169	374	407	12	0	8	0
1	B	272	4246	1375	2092	366	402	11	0	7	0

There are 32 discrepancies between the modelled and reference sequences:

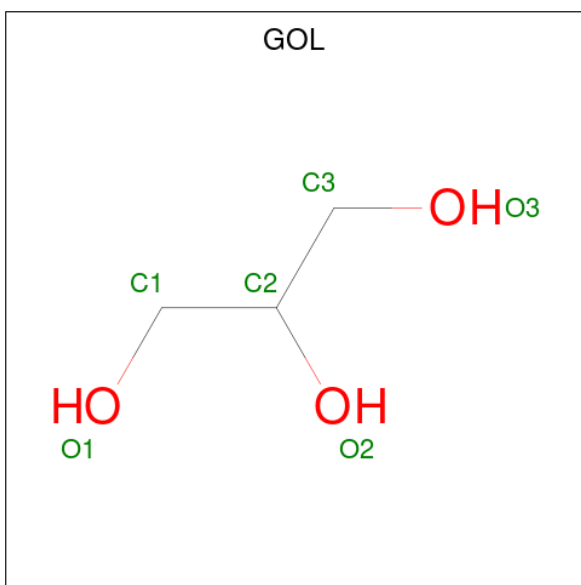
Chain	Residue	Modelled	Actual	Comment	Reference
A	617	PHE	VAL	variant	UNP O60674
A	659	ALA	TRP	engineered mutation	UNP O60674
A	777	ALA	TRP	engineered mutation	UNP O60674
A	794	HIS	PHE	engineered mutation	UNP O60674
A	813	LEU	-	expression tag	UNP O60674
A	814	VAL	-	expression tag	UNP O60674
A	815	PRO	-	expression tag	UNP O60674
A	816	ARG	-	expression tag	UNP O60674
A	817	GLY	-	expression tag	UNP O60674
A	818	SER	-	expression tag	UNP O60674
A	819	HIS	-	expression tag	UNP O60674
A	820	HIS	-	expression tag	UNP O60674
A	821	HIS	-	expression tag	UNP O60674
A	822	HIS	-	expression tag	UNP O60674
A	823	HIS	-	expression tag	UNP O60674
A	824	HIS	-	expression tag	UNP O60674
B	617	PHE	VAL	variant	UNP O60674
B	659	ALA	TRP	engineered mutation	UNP O60674
B	777	ALA	TRP	engineered mutation	UNP O60674
B	794	HIS	PHE	engineered mutation	UNP O60674
B	813	LEU	-	expression tag	UNP O60674
B	814	VAL	-	expression tag	UNP O60674
B	815	PRO	-	expression tag	UNP O60674
B	816	ARG	-	expression tag	UNP O60674
B	817	GLY	-	expression tag	UNP O60674

*Continued on next page...*

Continued from previous page...

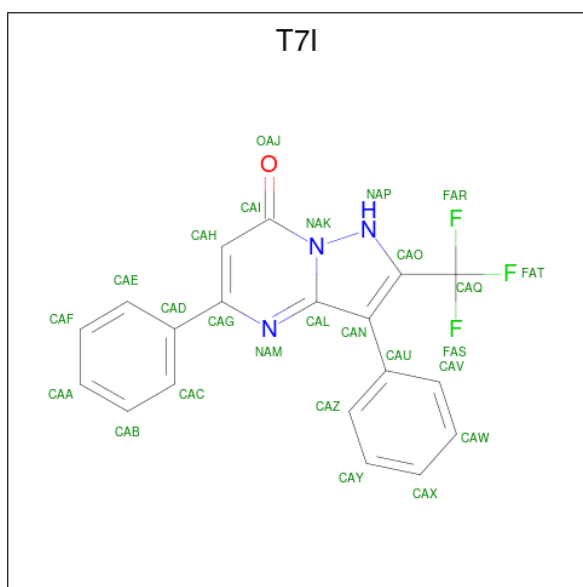
Chain	Residue	Modelled	Actual	Comment	Reference
B	818	SER	-	expression tag	UNP O60674
B	819	HIS	-	expression tag	UNP O60674
B	820	HIS	-	expression tag	UNP O60674
B	821	HIS	-	expression tag	UNP O60674
B	822	HIS	-	expression tag	UNP O60674
B	823	HIS	-	expression tag	UNP O60674
B	824	HIS	-	expression tag	UNP O60674

- Molecule 2 is GLYCEROL (three-letter code: GOL) (formula: C<sub>3</sub>H<sub>8</sub>O<sub>3</sub>).



Mol	Chain	Residues	Atoms				ZeroOcc	AltConf
			Total	C	H	O		
2	A	1	14	3	8	3	0	0
2	A	1	28	6	16	6	0	1
2	B	1	14	3	8	3	0	0
2	B	1	12	3	6	3	0	0
2	B	1	14	3	8	3	0	0

- Molecule 3 is 3,5-diphenyl-2-(trifluoromethyl)-1 {H}-pyrazolo[1,5-a]pyrimidin-7-one (three-letter code: T7I) (formula: C<sub>19</sub>H<sub>12</sub>F<sub>3</sub>N<sub>3</sub>O) (labeled as "Ligand of Interest" by depositor).



Mol	Chain	Residues	Atoms					ZeroOcc	AltConf	
			Total	C	F	H	N			O
3	A	1	38	19	3	12	3	1	0	0
3	B	1	38	19	3	12	3	1	0	0

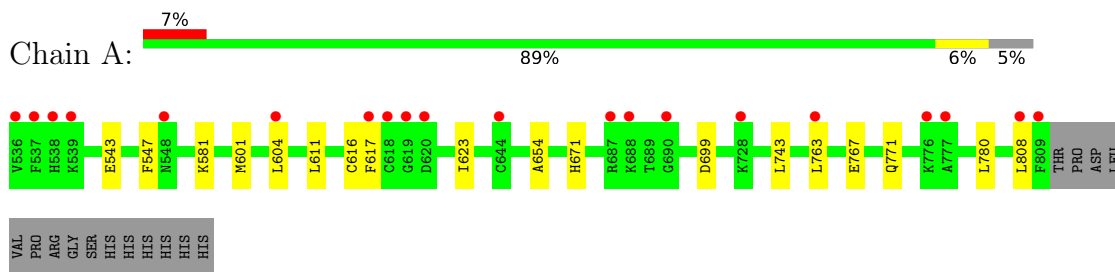
- Molecule 4 is water.

Mol	Chain	Residues	Atoms		ZeroOcc	AltConf
4	A	215	Total	O	0	3
			218	218		
4	B	207	Total	O	0	4
			211	211		

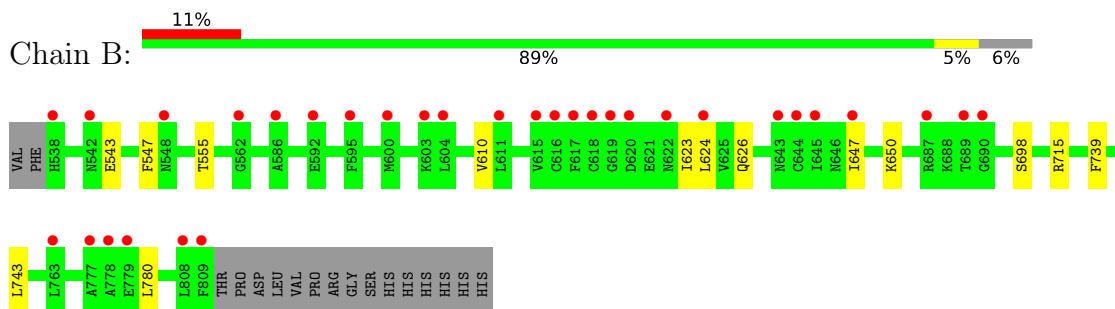
### 3 Residue-property plots [i](#)

These plots are drawn for all protein, RNA, DNA and oligosaccharide chains in the entry. The first graphic for a chain summarises the proportions of the various outlier classes displayed in the second graphic. The second graphic shows the sequence view annotated by issues in geometry and electron density. Residues are color-coded according to the number of geometric quality criteria for which they contain at least one outlier: green = 0, yellow = 1, orange = 2 and red = 3 or more. A red dot above a residue indicates a poor fit to the electron density ( $RSRZ > 2$ ). Stretches of 2 or more consecutive residues without any outlier are shown as a green connector. Residues present in the sample, but not in the model, are shown in grey.

- Molecule 1: Tyrosine-protein kinase JAK2



- Molecule 1: Tyrosine-protein kinase JAK2



## 4 Data and refinement statistics

Property	Value	Source
Space group	P 1	Depositor
Cell constants a, b, c, $\alpha$ , $\beta$ , $\gamma$	46.28Å 56.80Å 60.66Å 89.97° 79.14° 71.39°	Depositor
Resolution (Å)	41.19 – 1.50 41.19 – 1.50	Depositor EDS
% Data completeness (in resolution range)	94.6 (41.19-1.50) 94.8 (41.19-1.50)	Depositor EDS
$R_{merge}$	0.06	Depositor
$R_{sym}$	(Not available)	Depositor
$\langle I/\sigma(I) \rangle$ <sup>1</sup>	1.73 (at 1.50Å)	Xtrriage
Refinement program	PHENIX 1.19.2_4158	Depositor
R, $R_{free}$	0.222 , 0.259 0.222 , 0.259	Depositor DCC
$R_{free}$ test set	4336 reflections (4.98%)	wwPDB-VP
Wilson B-factor (Å <sup>2</sup> )	16.7	Xtrriage
Anisotropy	0.712	Xtrriage
Bulk solvent $k_{sol}$ (e/Å <sup>3</sup> ), $B_{sol}$ (Å <sup>2</sup> )	0.41 , 46.3	EDS
L-test for twinning <sup>2</sup>	$\langle  L  \rangle = 0.51$ , $\langle L^2 \rangle = 0.34$	Xtrriage
Estimated twinning fraction	No twinning to report.	Xtrriage
$F_o, F_c$ correlation	0.94	EDS
Total number of atoms	9204	wwPDB-VP
Average B, all atoms (Å <sup>2</sup> )	30.0	wwPDB-VP

Xtrriage's analysis on translational NCS is as follows: *The analyses of the Patterson function reveals a significant off-origin peak that is 26.71 % of the origin peak, indicating pseudo-translational symmetry. The chance of finding a peak of this or larger height randomly in a structure without pseudo-translational symmetry is equal to 2.5061e-03. The detected translational NCS is most likely also responsible for the elevated intensity ratio.*

<sup>1</sup>Intensities estimated from amplitudes.

<sup>2</sup>Theoretical values of  $\langle |L| \rangle$ ,  $\langle L^2 \rangle$  for acentric reflections are 0.5, 0.333 respectively for untwinned datasets, and 0.375, 0.2 for perfectly twinned datasets.

## 5 Model quality

### 5.1 Standard geometry

Bond lengths and bond angles in the following residue types are not validated in this section: T7I, GOL

The Z score for a bond length (or angle) is the number of standard deviations the observed value is removed from the expected value. A bond length (or angle) with  $|Z| > 5$  is considered an outlier worth inspection. RMSZ is the root-mean-square of all Z scores of the bond lengths (or angles).

Mol	Chain	Bond lengths		Bond angles	
		RMSZ	# Z  >5	RMSZ	# Z  >5
1	A	0.39	0/2284	0.56	0/3094
1	B	0.38	0/2231	0.54	0/3030
All	All	0.39	0/4515	0.55	0/6124

There are no bond length outliers.

There are no bond angle outliers.

There are no chirality outliers.

There are no planarity outliers.

### 5.2 Too-close contacts

In the following table, the Non-H and H(model) columns list the number of non-hydrogen atoms and hydrogen atoms in the chain respectively. The H(added) column lists the number of hydrogen atoms added and optimized by MolProbity. The Clashes column lists the number of clashes within the asymmetric unit, whereas Symm-Clashes lists symmetry-related clashes.

Mol	Chain	Non-H	H(model)	H(added)	Clashes	Symm-Clashes
1	A	2202	2169	2158	14	0
1	B	2154	2092	2079	11	0
2	A	18	24	24	1	0
2	B	18	22	24	0	0
3	A	26	12	0	0	0
3	B	26	12	0	0	0
4	A	218	0	0	3	0
4	B	211	0	0	1	0
All	All	4873	4331	4285	25	0

The all-atom clashscore is defined as the number of clashes found per 1000 atoms (including hydrogen atoms). The all-atom clashscore for this structure is 3.



All (25) close contacts within the same asymmetric unit are listed below, sorted by their clash magnitude.

Atom-1	Atom-2	Interatomic distance (Å)	Clash overlap (Å)
1:B:743[B]:LEU:HD11	1:B:780:LEU:HD13	1.73	0.69
1:A:611:LEU:HD21	4:A:1185:HOH:O	1.93	0.69
1:B:624:LEU:HD21	1:B:626:GLN:NE2	2.10	0.65
1:A:581:LYS:NZ	1:A:699:ASP:OD2	2.29	0.64
1:B:743[B]:LEU:HD11	1:B:780:LEU:CD1	2.29	0.63
1:A:611:LEU:HD23	2:A:903[B]:GOL:H2	1.82	0.61
1:A:604:LEU:HD23	4:A:1140:HOH:O	2.00	0.60
1:B:647:ILE:HD12	1:B:650:LYS:HE2	1.84	0.59
1:B:543:GLU:OE1	1:B:543:GLU:N	2.37	0.56
1:A:780:LEU:HD23	1:A:808:LEU:HD21	1.91	0.53
1:A:547:PHE:HZ	1:A:623:ILE:HD13	1.75	0.52
1:B:610:VAL:HG11	4:B:1026:HOH:O	2.11	0.51
1:A:543:GLU:OE1	1:A:543:GLU:N	2.39	0.49
1:A:743:LEU:HD22	1:A:780:LEU:HD13	1.94	0.48
1:A:547:PHE:CZ	1:A:623:ILE:HD13	2.50	0.47
1:A:654:ALA:CB	1:A:743:LEU:HD21	2.46	0.46
1:A:771:GLN:HG3	4:A:1184:HOH:O	2.16	0.45
1:B:547:PHE:HZ	1:B:623:ILE:HD13	1.82	0.45
1:A:616:CYS:O	1:A:617:PHE:HB2	2.19	0.41
1:B:624:LEU:HG	1:B:626:GLN:HG3	2.02	0.41
1:B:555:THR:OG1	1:B:715:ARG:NH2	2.48	0.41
1:A:763:LEU:O	1:A:767:GLU:HG2	2.19	0.41
1:B:610:VAL:CG1	1:B:698:SER:HA	2.50	0.41
1:B:739:PHE:CE2	1:B:743[A]:LEU:HD11	2.55	0.41
1:A:601[B]:MET:HE1	1:A:671:HIS:HA	2.02	0.41

There are no symmetry-related clashes.

## 5.3 Torsion angles [i](#)

### 5.3.1 Protein backbone [i](#)

In the following table, the Percentiles column shows the percent Ramachandran outliers of the chain as a percentile score with respect to all X-ray entries followed by that with respect to entries of similar resolution.

The Analysed column shows the number of residues for which the backbone conformation was analysed, and the total number of residues.

Mol	Chain	Analysed	Favoured	Allowed	Outliers	Percentiles	
1	A	280/289 (97%)	274 (98%)	6 (2%)	0	100	100
1	B	277/289 (96%)	270 (98%)	7 (2%)	0	100	100
All	All	557/578 (96%)	544 (98%)	13 (2%)	0	100	100

There are no Ramachandran outliers to report.

### 5.3.2 Protein sidechains [i](#)

In the following table, the Percentiles column shows the percent sidechain outliers of the chain as a percentile score with respect to all X-ray entries followed by that with respect to entries of similar resolution.

The Analysed column shows the number of residues for which the sidechain conformation was analysed, and the total number of residues.

Mol	Chain	Analysed	Rotameric	Outliers	Percentiles	
1	A	245/259 (95%)	245 (100%)	0	100	100
1	B	236/259 (91%)	236 (100%)	0	100	100
All	All	481/518 (93%)	481 (100%)	0	100	100

There are no protein residues with a non-rotameric sidechain to report.

Sometimes sidechains can be flipped to improve hydrogen bonding and reduce clashes. There are no such sidechains identified.

### 5.3.3 RNA [i](#)

There are no RNA molecules in this entry.

## 5.4 Non-standard residues in protein, DNA, RNA chains [i](#)

There are no non-standard protein/DNA/RNA residues in this entry.

### 5.5 Carbohydrates [i](#)

There are no monosaccharides in this entry.

## 5.6 Ligand geometry

8 ligands are modelled in this entry.

In the following table, the Counts columns list the number of bonds (or angles) for which Mogul statistics could be retrieved, the number of bonds (or angles) that are observed in the model and the number of bonds (or angles) that are defined in the Chemical Component Dictionary. The Link column lists molecule types, if any, to which the group is linked. The Z score for a bond length (or angle) is the number of standard deviations the observed value is removed from the expected value. A bond length (or angle) with  $|Z| > 2$  is considered an outlier worth inspection. RMSZ is the root-mean-square of all Z scores of the bond lengths (or angles).

Mol	Type	Chain	Res	Link	Bond lengths			Bond angles		
					Counts	RMSZ	# Z  > 2	Counts	RMSZ	# Z  > 2
2	GOL	B	902	-	5,5,5	0.92	0	5,5,5	0.94	0
2	GOL	A	903[A]	-	5,5,5	0.84	0	5,5,5	1.05	0
2	GOL	A	901	-	5,5,5	0.70	0	5,5,5	1.08	0
3	T7I	A	902	-	27,29,29	1.93	6 (22%)	37,43,43	2.16	8 (21%)
2	GOL	B	904	-	5,5,5	0.72	0	5,5,5	0.98	0
2	GOL	A	903[B]	-	5,5,5	1.03	0	5,5,5	0.90	0
2	GOL	B	901	-	5,5,5	0.92	0	5,5,5	0.83	0
3	T7I	B	903	-	27,29,29	1.95	7 (25%)	37,43,43	2.11	8 (21%)

In the following table, the Chirals column lists the number of chiral outliers, the number of chiral centers analysed, the number of these observed in the model and the number defined in the Chemical Component Dictionary. Similar counts are reported in the Torsion and Rings columns. '-' means no outliers of that kind were identified.

Mol	Type	Chain	Res	Link	Chirals	Torsions	Rings
2	GOL	B	902	-	-	3/4/4/4	-
2	GOL	A	903[A]	-	-	2/4/4/4	-
2	GOL	A	901	-	-	2/4/4/4	-
3	T7I	A	902	-	-	0/14/14/14	0/4/4/4
2	GOL	B	904	-	-	0/4/4/4	-
2	GOL	A	903[B]	-	-	2/4/4/4	-
2	GOL	B	901	-	-	2/4/4/4	-
3	T7I	B	903	-	-	0/14/14/14	0/4/4/4

All (13) bond length outliers are listed below:

Mol	Chain	Res	Type	Atoms	Z	Observed(Å)	Ideal(Å)
3	B	903	T7I	CAD-CAG	-5.11	1.39	1.47
3	A	902	T7I	CAD-CAG	-4.85	1.40	1.47
3	B	903	T7I	CAU-CAN	-4.55	1.41	1.49

*Continued on next page...*

Continued from previous page...

Mol	Chain	Res	Type	Atoms	Z	Observed(Å)	Ideal(Å)
3	A	902	T7I	CAN-CAL	-4.31	1.35	1.46
3	A	902	T7I	CAU-CAN	-4.25	1.41	1.49
3	B	903	T7I	CAN-CAL	-3.91	1.36	1.46
3	B	903	T7I	CAG-NAM	-3.05	1.32	1.38
3	A	902	T7I	CAG-NAM	-2.87	1.32	1.38
3	B	903	T7I	CAH-CAI	-2.72	1.36	1.43
3	A	902	T7I	CAH-CAI	-2.40	1.37	1.43
3	B	903	T7I	NAP-NAK	2.32	1.42	1.39
3	A	902	T7I	CAL-NAK	2.24	1.39	1.38
3	B	903	T7I	CAL-NAK	2.17	1.39	1.38

All (16) bond angle outliers are listed below:

Mol	Chain	Res	Type	Atoms	Z	Observed(°)	Ideal(°)
3	B	903	T7I	CAN-CAL-NAM	6.86	139.24	124.48
3	A	902	T7I	CAN-CAL-NAM	6.84	139.20	124.48
3	A	902	T7I	CAO-NAP-NAK	-5.92	100.42	108.70
3	A	902	T7I	CAN-CAO-NAP	5.24	115.21	109.38
3	B	903	T7I	CAO-NAP-NAK	-4.98	101.73	108.70
3	B	903	T7I	CAN-CAO-NAP	4.80	114.73	109.38
3	B	903	T7I	NAK-CAL-NAM	-3.86	117.34	126.95
3	B	903	T7I	CAQ-CAO-NAP	-3.84	116.15	120.99
3	A	902	T7I	NAK-CAL-NAM	-3.53	118.17	126.95
3	A	902	T7I	CAQ-CAO-NAP	-3.41	116.69	120.99
3	A	902	T7I	CAN-CAL-NAK	-2.72	102.62	109.85
3	B	903	T7I	OAJ-CAI-CAH	-2.42	119.52	125.72
3	B	903	T7I	CAN-CAL-NAK	-2.42	103.41	109.85
3	A	902	T7I	FAT-CAQ-CAO	-2.27	108.81	112.36
3	B	903	T7I	CAD-CAG-NAM	2.14	117.58	115.38
3	A	902	T7I	CAD-CAG-NAM	2.11	117.54	115.38

There are no chirality outliers.

All (11) torsion outliers are listed below:

Mol	Chain	Res	Type	Atoms
2	A	901	GOL	O1-C1-C2-C3
2	A	903[A]	GOL	O1-C1-C2-O2
2	A	903[A]	GOL	O1-C1-C2-C3
2	A	903[B]	GOL	O1-C1-C2-C3
2	B	901	GOL	O1-C1-C2-C3
2	B	902	GOL	O1-C1-C2-C3
2	A	901	GOL	O1-C1-C2-O2

Continued on next page...

*Continued from previous page...*

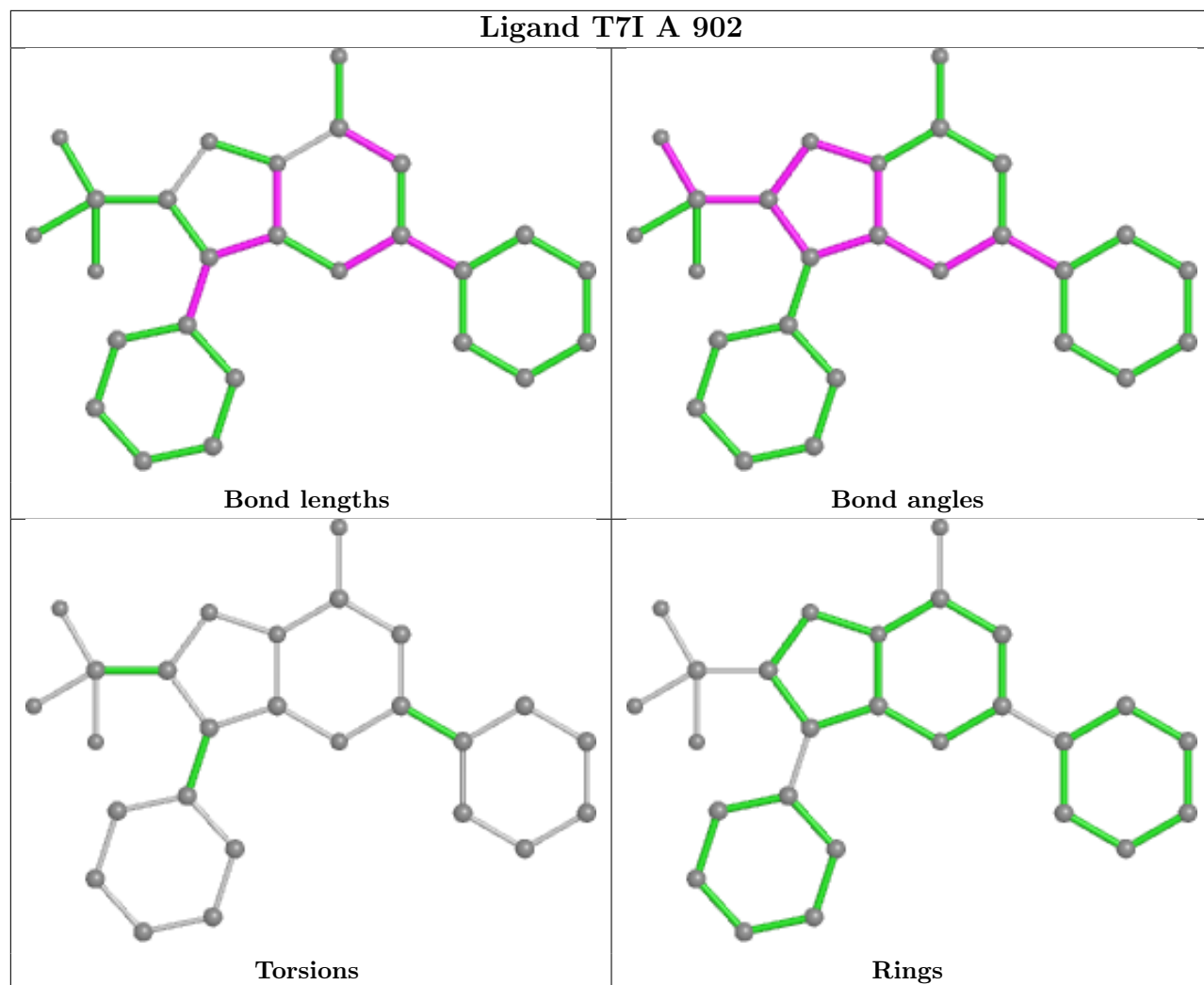
Mol	Chain	Res	Type	Atoms
2	A	903[B]	GOL	O1-C1-C2-O2
2	B	902	GOL	O1-C1-C2-O2
2	B	901	GOL	O1-C1-C2-O2
2	B	902	GOL	O2-C2-C3-O3

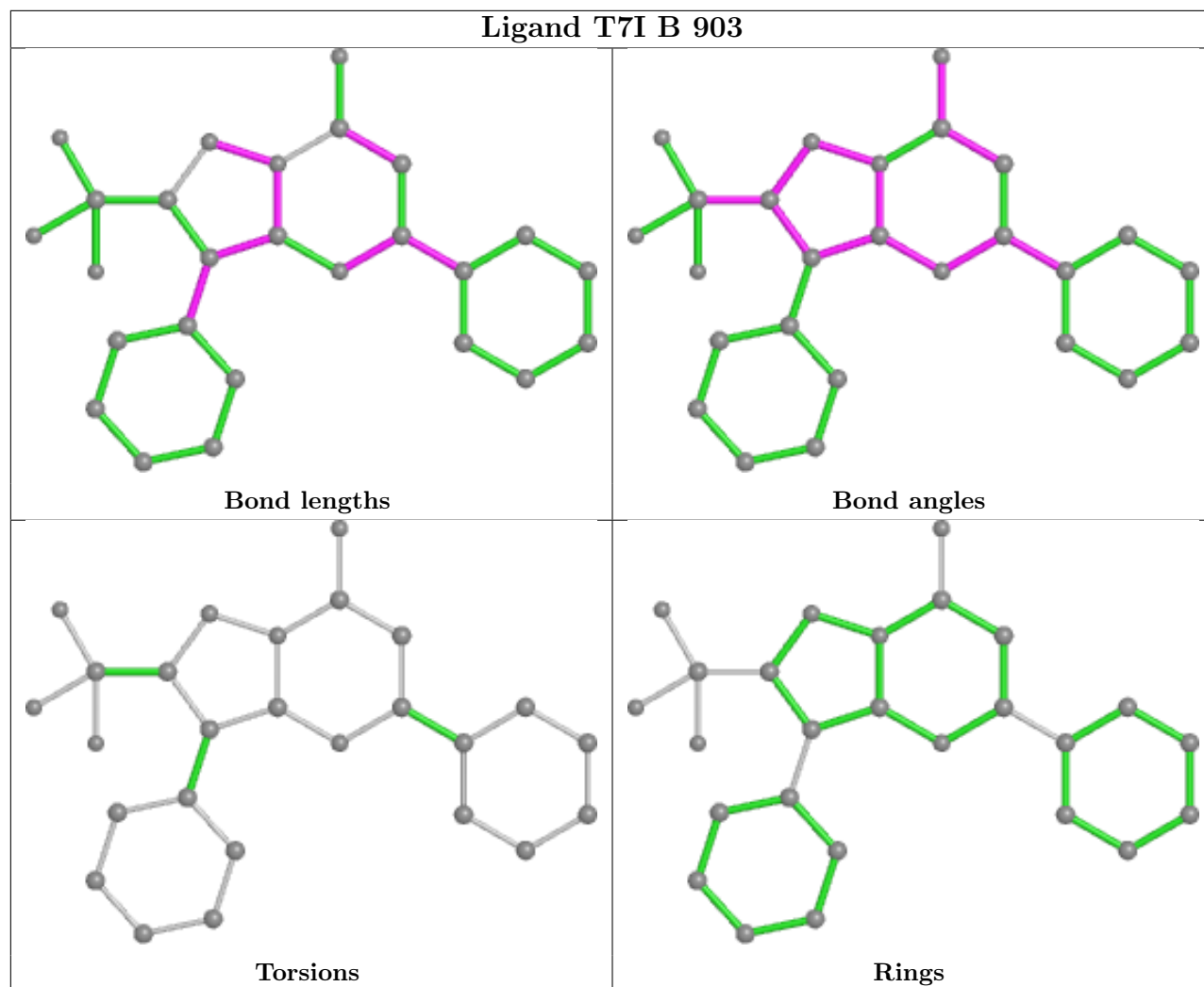
There are no ring outliers.

1 monomer is involved in 1 short contact:

Mol	Chain	Res	Type	Clashes	Symm-Clashes
2	A	903[B]	GOL	1	0

The following is a two-dimensional graphical depiction of Mogul quality analysis of bond lengths, bond angles, torsion angles, and ring geometry for all instances of the Ligand of Interest. In addition, ligands with molecular weight > 250 and outliers as shown on the validation Tables will also be included. For torsion angles, if less than 5% of the Mogul distribution of torsion angles is within 10 degrees of the torsion angle in question, then that torsion angle is considered an outlier. Any bond that is central to one or more torsion angles identified as an outlier by Mogul will be highlighted in the graph. For rings, the root-mean-square deviation (RMSD) between the ring in question and similar rings identified by Mogul is calculated over all ring torsion angles. If the average RMSD is greater than 60 degrees and the minimal RMSD between the ring in question and any Mogul-identified rings is also greater than 60 degrees, then that ring is considered an outlier. The outliers are highlighted in purple. The color gray indicates Mogul did not find sufficient equivalents in the CSD to analyse the geometry.





## 5.7 Other polymers [i](#)

There are no such residues in this entry.

## 5.8 Polymer linkage issues [i](#)

There are no chain breaks in this entry.

## 6 Fit of model and data

### 6.1 Protein, DNA and RNA chains

In the following table, the column labelled ‘#RSRZ > 2’ contains the number (and percentage) of RSRZ outliers, followed by percent RSRZ outliers for the chain as percentile scores relative to all X-ray entries and entries of similar resolution. The OWAB column contains the minimum, median, 95<sup>th</sup> percentile and maximum values of the occupancy-weighted average B-factor per residue. The column labelled ‘Q < 0.9’ lists the number of (and percentage) of residues with an average occupancy less than 0.9.

Mol	Chain	Analysed	<RSRZ>	#RSRZ>2	OWAB(Å <sup>2</sup> )	Q<0.9
1	A	274/289 (94%)	0.77	20 (7%) <b>15</b> <b>16</b>	14, 24, 48, 62	0
1	B	272/289 (94%)	0.88	32 (11%) <b>4</b> <b>4</b>	12, 25, 52, 76	0
All	All	546/578 (94%)	0.83	52 (9%) <b>8</b> <b>8</b>	12, 24, 50, 76	0

All (52) RSRZ outliers are listed below:

Mol	Chain	Res	Type	RSRZ
1	A	617	PHE	17.4
1	B	617	PHE	11.4
1	A	809	PHE	10.0
1	B	808	LEU	9.1
1	B	619	GLY	6.1
1	A	536	VAL	6.0
1	B	620	ASP	6.0
1	B	618	CYS	6.0
1	B	809	PHE	5.1
1	B	616	CYS	4.7
1	A	808	LEU	4.7
1	A	619	GLY	4.7
1	A	687	ARG	4.4
1	A	644	CYS	4.4
1	A	777	ALA	4.1
1	B	586	ALA	3.8
1	B	600	MET	3.7
1	A	763	LEU	3.6
1	A	539	LYS	3.6
1	B	538	HIS	3.5
1	B	624	LEU	3.2
1	A	690	GLY	3.2
1	B	644	CYS	3.2
1	B	643	ASN	3.2

*Continued on next page...*



*Continued from previous page...*

Mol	Chain	Res	Type	RSRZ
1	B	778	ALA	3.1
1	A	537	PHE	3.1
1	A	538	HIS	3.1
1	B	689	THR	3.1
1	B	604	LEU	3.0
1	B	595	PHE	2.9
1	A	618	CYS	2.8
1	A	620	ASP	2.7
1	A	604	LEU	2.7
1	B	645	ILE	2.6
1	B	542	ASN	2.6
1	A	688	LYS	2.6
1	B	779	GLU	2.6
1	B	687	ARG	2.6
1	A	728	LYS	2.5
1	B	777	ALA	2.5
1	B	611	LEU	2.4
1	B	763	LEU	2.4
1	B	690	GLY	2.4
1	A	548	ASN	2.4
1	A	776	LYS	2.4
1	B	562	GLY	2.4
1	B	603	LYS	2.1
1	B	647	ILE	2.1
1	B	615	VAL	2.1
1	B	622	ASN	2.1
1	B	592	GLU	2.0
1	B	548	ASN	2.0

## 6.2 Non-standard residues in protein, DNA, RNA chains [i](#)

There are no non-standard protein/DNA/RNA residues in this entry.

## 6.3 Carbohydrates [i](#)

There are no monosaccharides in this entry.

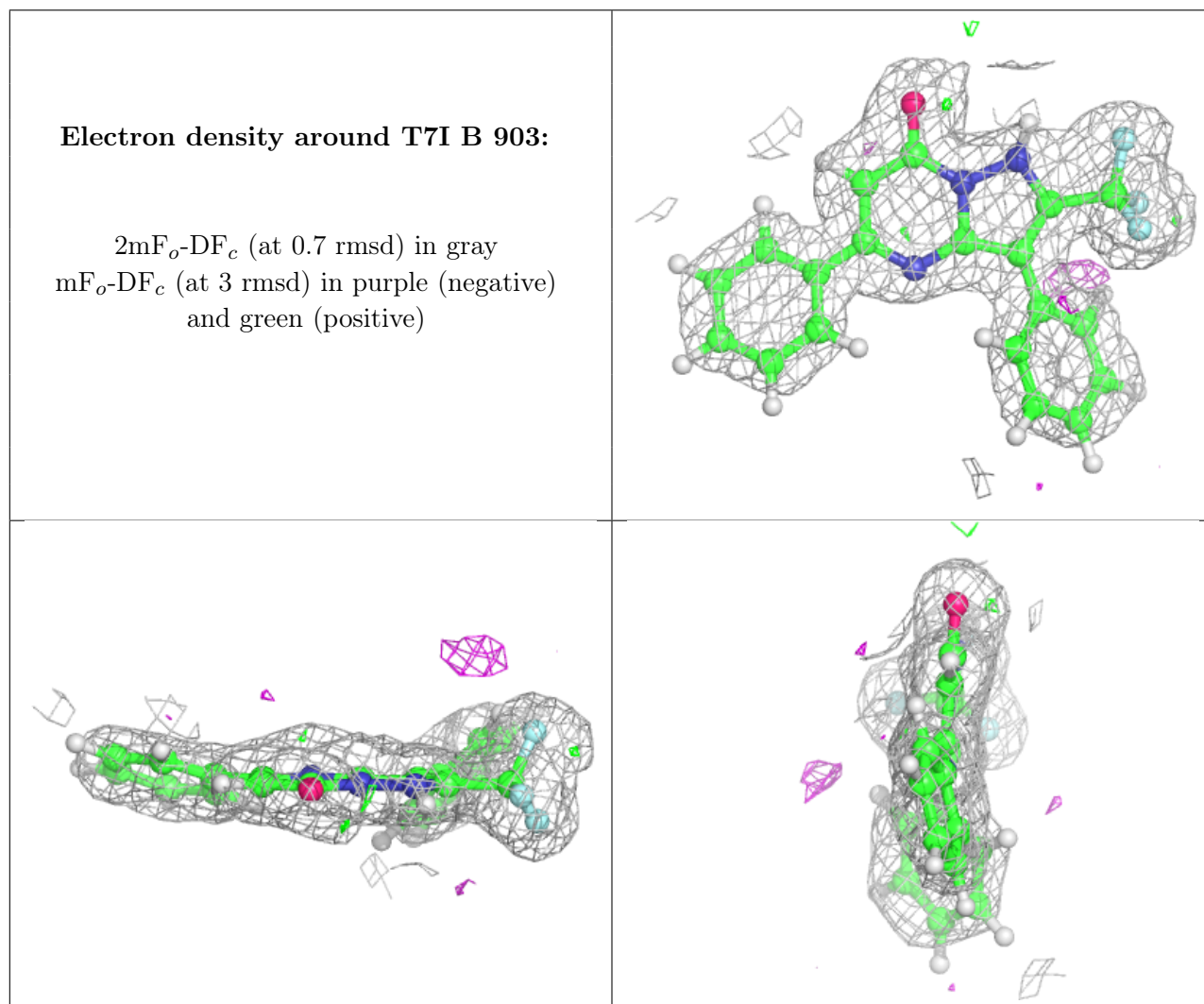
## 6.4 Ligands [i](#)

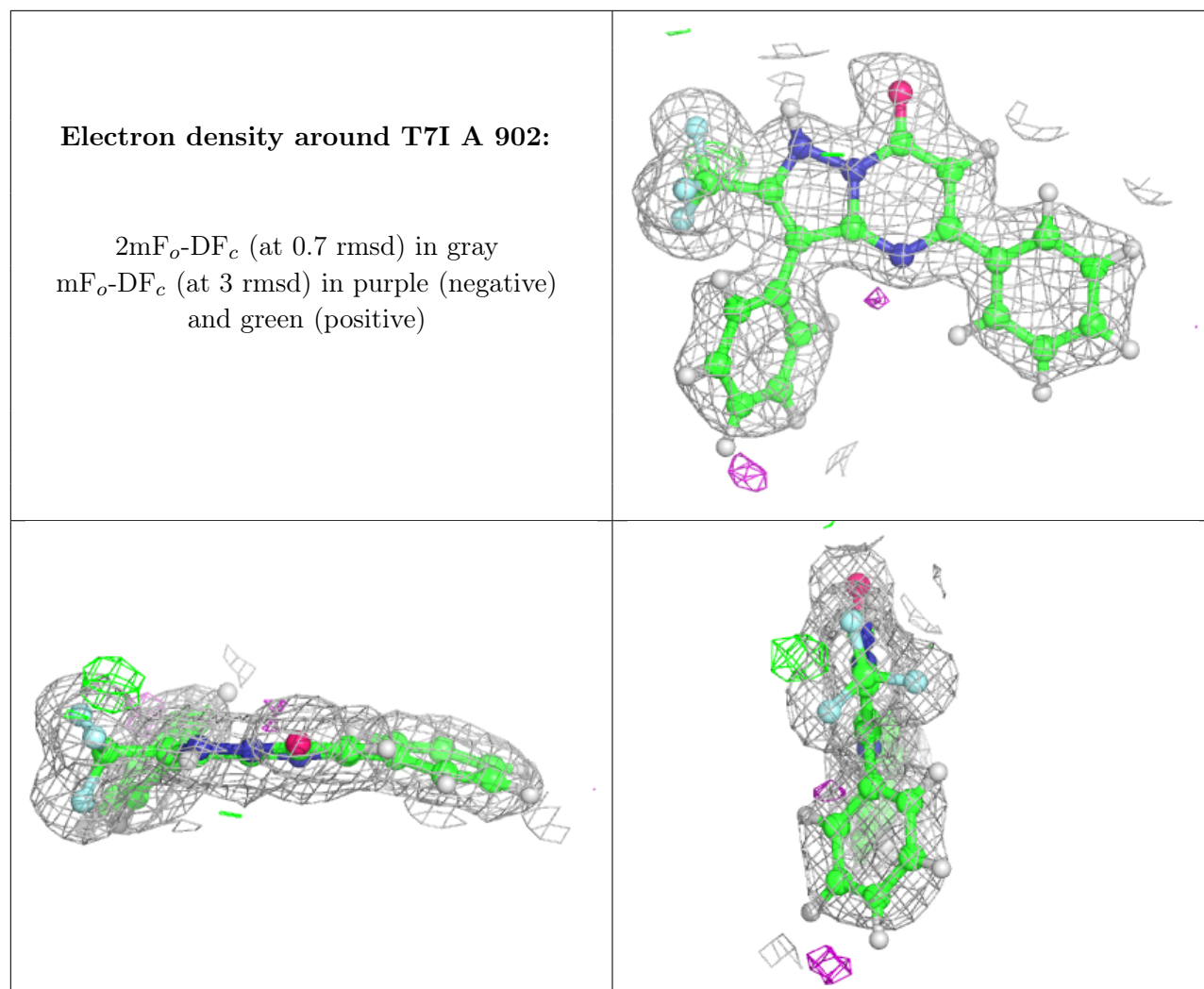
In the following table, the Atoms column lists the number of modelled atoms in the group and the number defined in the chemical component dictionary. The B-factors column lists the minimum,

median, 95<sup>th</sup> percentile and maximum values of B factors of atoms in the group. The column labelled 'Q < 0.9' lists the number of atoms with occupancy less than 0.9.

Mol	Type	Chain	Res	Atoms	RSCC	RSR	B-factors(Å <sup>2</sup> )	Q<0.9
2	GOL	A	903[A]	6/6	0.53	0.25	30,37,42,44	14
2	GOL	A	903[B]	6/6	0.53	0.25	29,35,40,42	14
2	GOL	B	901	6/6	0.78	0.16	37,45,51,53	0
2	GOL	A	901	6/6	0.82	0.13	28,34,37,37	0
2	GOL	B	902	6/6	0.82	0.33	26,36,43,43	0
2	GOL	B	904	6/6	0.82	0.15	30,37,42,44	0
3	T7I	B	903	26/26	0.94	0.09	16,20,27,27	0
3	T7I	A	902	26/26	0.96	0.07	17,19,24,25	0

The following is a graphical depiction of the model fit to experimental electron density of all instances of the Ligand of Interest. In addition, ligands with molecular weight > 250 and outliers as shown on the geometry validation Tables will also be included. Each fit is shown from different orientation to approximate a three-dimensional view.





## 6.5 Other polymers [\(i\)](#)

There are no such residues in this entry.