



Full wwPDB X-ray Structure Validation Report ⓘ

Sep 6, 2022 – 02:04 pm BST

PDB ID : 8ARJ
Title : Anaplastic Lymphoma Kinase with a novel carboline inhibitor
Authors : Mologni, L.; Scapozza, L.; Gambacorti-Passerini, C.; Tardy, S.; Goekjian, P.;
Robinson, C.; Brown, D.
Deposited on : 2022-08-17
Resolution : 1.65 Å(reported)

This is a Full wwPDB X-ray Structure Validation Report for a publicly released PDB entry.

We welcome your comments at validation@mail.wwpdb.org

A user guide is available at

<https://www.wwpdb.org/validation/2017/XrayValidationReportHelp>

with specific help available everywhere you see the ⓘ symbol.

The types of validation reports are described at <http://www.wwpdb.org/validation/2017/FAQs#types>.

The following versions of software and data (see [references ⓘ](#)) were used in the production of this report:

MolProbity : 4.02b-467
Mogul : 1.8.4, CSD as541be (2020)
Xtriage (Phenix) : 1.13
EDS : 2.30
buster-report : 1.1.7 (2018)
Percentile statistics : 20191225.v01 (using entries in the PDB archive December 25th 2019)
Refmac : 5.8.0267
CCP4 : 7.1.010 (Gargrove)
Ideal geometry (proteins) : Engh & Huber (2001)
Ideal geometry (DNA, RNA) : Parkinson et al. (1996)
Validation Pipeline (wwPDB-VP) : 2.30

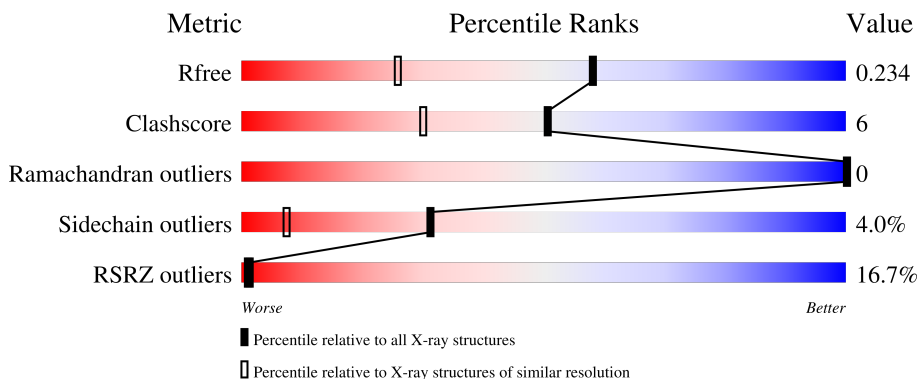
1 Overall quality at a glance

The following experimental techniques were used to determine the structure:

X-RAY DIFFRACTION

The reported resolution of this entry is 1.65 Å.

Percentile scores (ranging between 0-100) for global validation metrics of the entry are shown in the following graphic. The table shows the number of entries on which the scores are based.



Metric	Whole archive (#Entries)	Similar resolution (#Entries, resolution range(Å))
R_{free}	130704	3122 (1.66-1.62)
Clashscore	141614	3268 (1.66-1.62)
Ramachandran outliers	138981	3215 (1.66-1.62)
Sidechain outliers	138945	3215 (1.66-1.62)
RSRZ outliers	127900	3079 (1.66-1.62)

The table below summarises the geometric issues observed across the polymeric chains and their fit to the electron density. The red, orange, yellow and green segments of the lower bar indicate the fraction of residues that contain outliers for ≥ 3 , 2, 1 and 0 types of geometric quality criteria respectively. A grey segment represents the fraction of residues that are not modelled. The numeric value for each fraction is indicated below the corresponding segment, with a dot representing fractions $\leq 5\%$. The upper red bar (where present) indicates the fraction of residues that have poor fit to the electron density. The numeric value is given above the bar.

Mol	Chain	Length	Quality of chain
1	A	321	

2 Entry composition [i](#)

There are 3 unique types of molecules in this entry. The entry contains 4370 atoms, of which 2149 are hydrogens and 0 are deuteriums.

In the tables below, the ZeroOcc column contains the number of atoms modelled with zero occupancy, the AltConf column contains the number of residues with at least one atom in alternate conformation and the Trace column contains the number of residues modelled with at most 2 atoms.

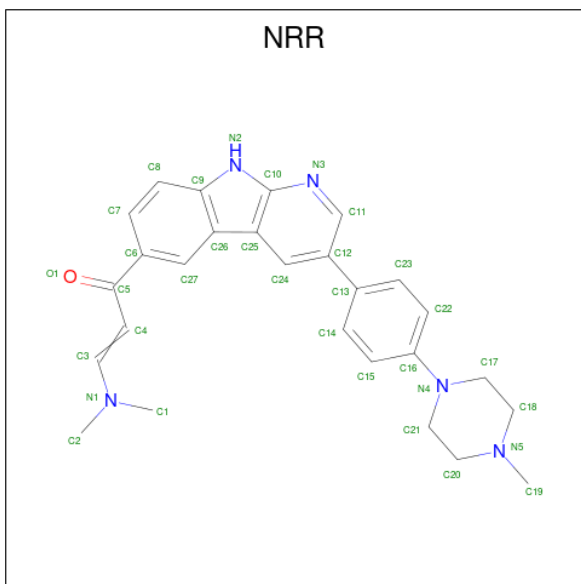
- Molecule 1 is a protein called ALK tyrosine kinase receptor.

Mol	Chain	Residues	Atoms					ZeroOcc	AltConf	Trace	
			Total	C	H	N	O				S
1	A	275	4245	1357	2120	364	383	21	134	1	0

There are 2 discrepancies between the modelled and reference sequences:

Chain	Residue	Modelled	Actual	Comment	Reference
A	1091	GLY	-	expression tag	UNP Q9UM73
A	1092	SER	-	expression tag	UNP Q9UM73

- Molecule 2 is 3-(dimethylamino)-1-[3-[4-(4-methylpiperazin-1-yl)phenyl]-9 {H}-pyrido[2,3-b]indol-6-yl]prop-2-en-1-one (three-letter code: NRR) (formula: C₂₇H₂₉N₅O) (labeled as "Ligand of Interest" by depositor).



Mol	Chain	Residues	Atoms					ZeroOcc	AltConf
			Total	C	H	N	O		
2	A	1	62	27	29	5	1	0	0

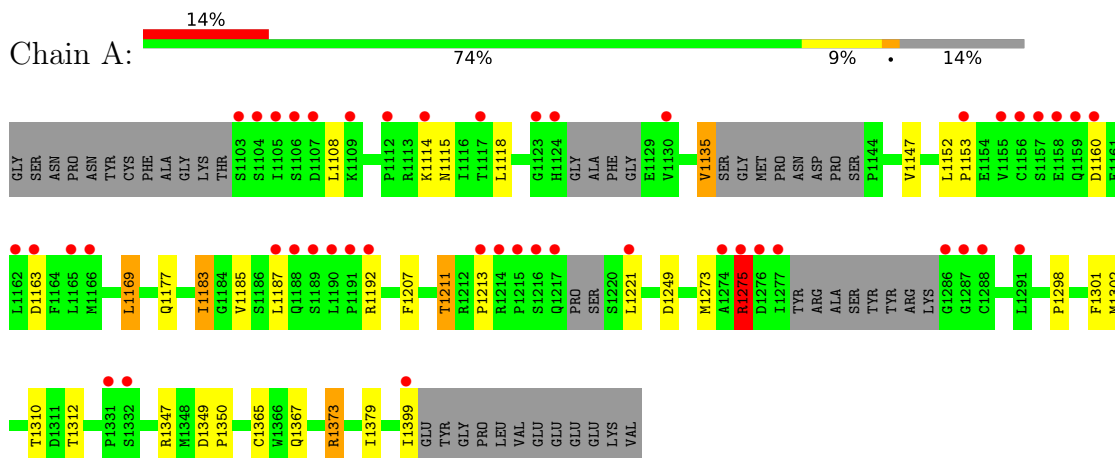
- Molecule 3 is water.

Mol	Chain	Residues	Atoms	ZeroOcc	AltConf
3	A	63	Total O 63 63	0	0

3 Residue-property plots [i](#)

These plots are drawn for all protein, RNA, DNA and oligosaccharide chains in the entry. The first graphic for a chain summarises the proportions of the various outlier classes displayed in the second graphic. The second graphic shows the sequence view annotated by issues in geometry and electron density. Residues are color-coded according to the number of geometric quality criteria for which they contain at least one outlier: green = 0, yellow = 1, orange = 2 and red = 3 or more. A red dot above a residue indicates a poor fit to the electron density ($RSRZ > 2$). Stretches of 2 or more consecutive residues without any outlier are shown as a green connector. Residues present in the sample, but not in the model, are shown in grey.

- Molecule 1: ALK tyrosine kinase receptor



4 Data and refinement statistics

Property	Value	Source
Space group	P 21 21 21	Depositor
Cell constants a, b, c, α , β , γ	51.71Å 56.59Å 103.24Å 90.00° 90.00° 90.00°	Depositor
Resolution (Å)	46.28 – 1.65 46.24 – 1.65	Depositor EDS
% Data completeness (in resolution range)	69.3 (46.28-1.65) 69.3 (46.24-1.65)	Depositor EDS
R_{merge}	0.07	Depositor
R_{sym}	(Not available)	Depositor
$\langle I/\sigma(I) \rangle$ ¹	1.59 (at 1.64Å)	Xtriage
Refinement program	REFMAC 5.8.0352	Depositor
R, R_{free}	0.197 , 0.229 0.204 , 0.234	Depositor DCC
R_{free} test set	1349 reflections (5.18%)	wwPDB-VP
Wilson B-factor (Å ²)	32.6	Xtriage
Anisotropy	0.058	Xtriage
Bulk solvent k_{sol} (e/Å ³), B_{sol} (Å ²)	(Not available) , (Not available)	EDS
L-test for twinning ²	$\langle L \rangle = 0.48$, $\langle L^2 \rangle = 0.31$	Xtriage
Estimated twinning fraction	No twinning to report.	Xtriage
F_o, F_c correlation	0.96	EDS
Total number of atoms	4370	wwPDB-VP
Average B, all atoms (Å ²)	44.0	wwPDB-VP

Xtriage's analysis on translational NCS is as follows: *The largest off-origin peak in the Patterson function is 6.55% of the height of the origin peak. No significant pseudotranslation is detected.*

¹Intensities estimated from amplitudes.

²Theoretical values of $\langle |L| \rangle$, $\langle L^2 \rangle$ for acentric reflections are 0.5, 0.333 respectively for untwinned datasets, and 0.375, 0.2 for perfectly twinned datasets.

5 Model quality [i](#)

5.1 Standard geometry [i](#)

Bond lengths and bond angles in the following residue types are not validated in this section: NRR

The Z score for a bond length (or angle) is the number of standard deviations the observed value is removed from the expected value. A bond length (or angle) with $|Z| > 5$ is considered an outlier worth inspection. RMSZ is the root-mean-square of all Z scores of the bond lengths (or angles).

Mol	Chain	Bond lengths		Bond angles	
		RMSZ	# $ Z > 5$	RMSZ	# $ Z > 5$
1	A	0.42	0/2172	0.79	4/2944 (0.1%)

Chiral center outliers are detected by calculating the chiral volume of a chiral center and verifying if the center is modelled as a planar moiety or with the opposite hand. A planarity outlier is detected by checking planarity of atoms in a peptide group, atoms in a mainchain group or atoms of a sidechain that are expected to be planar.

Mol	Chain	#Chirality outliers	#Planarity outliers
1	A	0	1

There are no bond length outliers.

All (4) bond angle outliers are listed below:

Mol	Chain	Res	Type	Atoms	Z	Observed($^{\circ}$)	Ideal($^{\circ}$)
1	A	1373	ARG	NE-CZ-NH1	7.06	123.83	120.30
1	A	1373	ARG	NE-CZ-NH2	-6.74	116.93	120.30
1	A	1310	THR	CB-CA-C	-5.38	97.08	111.60
1	A	1347	ARG	NE-CZ-NH2	-5.24	117.68	120.30

There are no chirality outliers.

All (1) planarity outliers are listed below:

Mol	Chain	Res	Type	Group
1	A	1275	ARG	Sidechain

5.2 Too-close contacts [i](#)

In the following table, the Non-H and H(model) columns list the number of non-hydrogen atoms and hydrogen atoms in the chain respectively. The H(added) column lists the number of hydrogen

atoms added and optimized by MolProbity. The Clashes column lists the number of clashes within the asymmetric unit, whereas Symm-Clashes lists symmetry-related clashes.

Mol	Chain	Non-H	H(model)	H(added)	Clashes	Symm-Clashes
1	A	2125	2120	2082	24	0
2	A	33	29	0	0	0
3	A	63	0	0	0	0
All	All	2221	2149	2082	24	0

The all-atom clashscore is defined as the number of clashes found per 1000 atoms (including hydrogen atoms). The all-atom clashscore for this structure is 6.

All (24) close contacts within the same asymmetric unit are listed below, sorted by their clash magnitude.

Atom-1	Atom-2	Interatomic distance (Å)	Clash overlap (Å)
1:A:1367:GLN:O	1:A:1373:ARG:HD3	1.90	0.71
1:A:1163:ASP:HB3	1:A:1275:ARG:HD3	1.73	0.70
1:A:1163:ASP:CB	1:A:1275:ARG:HD3	2.27	0.64
1:A:1365:CYS:O	1:A:1373:ARG:HD2	2.02	0.59
1:A:1207:PHE:O	1:A:1211:THR:HB	2.03	0.58
1:A:1187:LEU:O	1:A:1192:ARG:NH1	2.37	0.58
1:A:1115:ASN:O	1:A:1135:VAL:HA	2.04	0.58
1:A:1211:THR:CG2	1:A:1221:LEU:HD22	2.35	0.56
1:A:1367:GLN:HB2	1:A:1373:ARG:HG2	1.87	0.55
1:A:1302:MET:HA	1:A:1302:MET:HE2	1.92	0.52
1:A:1108:LEU:HD11	1:A:1169:LEU:HD13	1.94	0.50
1:A:1249:ASP:HB2	1:A:1273:MET:HG2	1.94	0.48
1:A:1163:ASP:CA	1:A:1275:ARG:HD3	2.43	0.48
1:A:1185:VAL:HB	1:A:1187:LEU:HG	1.95	0.48
1:A:1349:ASP:HB3	1:A:1350:PRO:HD2	1.97	0.47
1:A:1114:LYS:HG3	1:A:1115:ASN:ND2	2.30	0.46
1:A:1152:LEU:HD12	1:A:1153:PRO:HD2	1.99	0.44
1:A:1183:ILE:N	1:A:1183:ILE:HD13	2.33	0.43
1:A:1211:THR:HG23	1:A:1221:LEU:HD22	2.01	0.43
1:A:1298:PRO:HA	1:A:1301:PHE:CZ	2.53	0.43
1:A:1115:ASN:HD22	1:A:1115:ASN:N	2.16	0.42
1:A:1312:THR:HG23	1:A:1379:ILE:HD11	2.01	0.42
1:A:1183:ILE:N	1:A:1183:ILE:CD1	2.83	0.41
1:A:1213:PRO:HB2	1:A:1399:ILE:HG12	2.02	0.41

There are no symmetry-related clashes.

5.3 Torsion angles [i](#)

5.3.1 Protein backbone [i](#)

In the following table, the Percentiles column shows the percent Ramachandran outliers of the chain as a percentile score with respect to all X-ray entries followed by that with respect to entries of similar resolution.

The Analysed column shows the number of residues for which the backbone conformation was analysed, and the total number of residues.

Mol	Chain	Analysed	Favoured	Allowed	Outliers	Percentiles
1	A	266/321 (83%)	261 (98%)	5 (2%)	0	100 100

There are no Ramachandran outliers to report.

5.3.2 Protein sidechains [i](#)

In the following table, the Percentiles column shows the percent sidechain outliers of the chain as a percentile score with respect to all X-ray entries followed by that with respect to entries of similar resolution.

The Analysed column shows the number of residues for which the sidechain conformation was analysed, and the total number of residues.

Mol	Chain	Analysed	Rotameric	Outliers	Percentiles
1	A	228/279 (82%)	219 (96%)	9 (4%)	32 8

All (9) residues with a non-rotameric sidechain are listed below:

Mol	Chain	Res	Type
1	A	1118	LEU
1	A	1135	VAL
1	A	1147	VAL
1	A	1160	ASP
1	A	1169	LEU
1	A	1177	GLN
1	A	1183	ILE
1	A	1211	THR
1	A	1275	ARG

Sometimes sidechains can be flipped to improve hydrogen bonding and reduce clashes. All (3) such sidechains are listed below:

Mol	Chain	Res	Type
1	A	1115	ASN
1	A	1368	HIS
1	A	1369	GLN

5.3.3 RNA [i](#)

There are no RNA molecules in this entry.

5.4 Non-standard residues in protein, DNA, RNA chains [i](#)

There are no non-standard protein/DNA/RNA residues in this entry.

5.5 Carbohydrates [i](#)

There are no monosaccharides in this entry.

5.6 Ligand geometry [i](#)

1 ligand is modelled in this entry.

In the following table, the Counts columns list the number of bonds (or angles) for which Mogul statistics could be retrieved, the number of bonds (or angles) that are observed in the model and the number of bonds (or angles) that are defined in the Chemical Component Dictionary. The Link column lists molecule types, if any, to which the group is linked. The Z score for a bond length (or angle) is the number of standard deviations the observed value is removed from the expected value. A bond length (or angle) with $|Z| > 2$ is considered an outlier worth inspection. RMSZ is the root-mean-square of all Z scores of the bond lengths (or angles).

Mol	Type	Chain	Res	Link	Bond lengths			Bond angles		
					Counts	RMSZ	# Z > 2	Counts	RMSZ	# Z > 2
2	NRR	A	1501	-	37,37,37	0.90	3 (8%)	48,53,53	1.20	6 (12%)

In the following table, the Chirals column lists the number of chiral outliers, the number of chiral centers analysed, the number of these observed in the model and the number defined in the Chemical Component Dictionary. Similar counts are reported in the Torsion and Rings columns. '-' means no outliers of that kind were identified.

Mol	Type	Chain	Res	Link	Chirals	Torsions	Rings
2	NRR	A	1501	-	-	6/17/27/27	0/5/5/5

All (3) bond length outliers are listed below:

Mol	Chain	Res	Type	Atoms	Z	Observed(Å)	Ideal(Å)
2	A	1501	NRR	C4-C5	-2.45	1.43	1.47
2	A	1501	NRR	C10-N3	-2.30	1.33	1.37
2	A	1501	NRR	C11-C12	2.29	1.43	1.39

All (6) bond angle outliers are listed below:

Mol	Chain	Res	Type	Atoms	Z	Observed(°)	Ideal(°)
2	A	1501	NRR	C6-C5-C4	3.27	122.90	119.23
2	A	1501	NRR	C24-C25-C26	3.01	136.44	132.28
2	A	1501	NRR	C12-C24-C25	-2.98	118.94	122.36
2	A	1501	NRR	C3-C4-C5	2.46	122.05	119.75
2	A	1501	NRR	C7-C8-C9	-2.38	117.84	120.84
2	A	1501	NRR	C21-N4-C16	2.18	123.98	118.09

There are no chirality outliers.

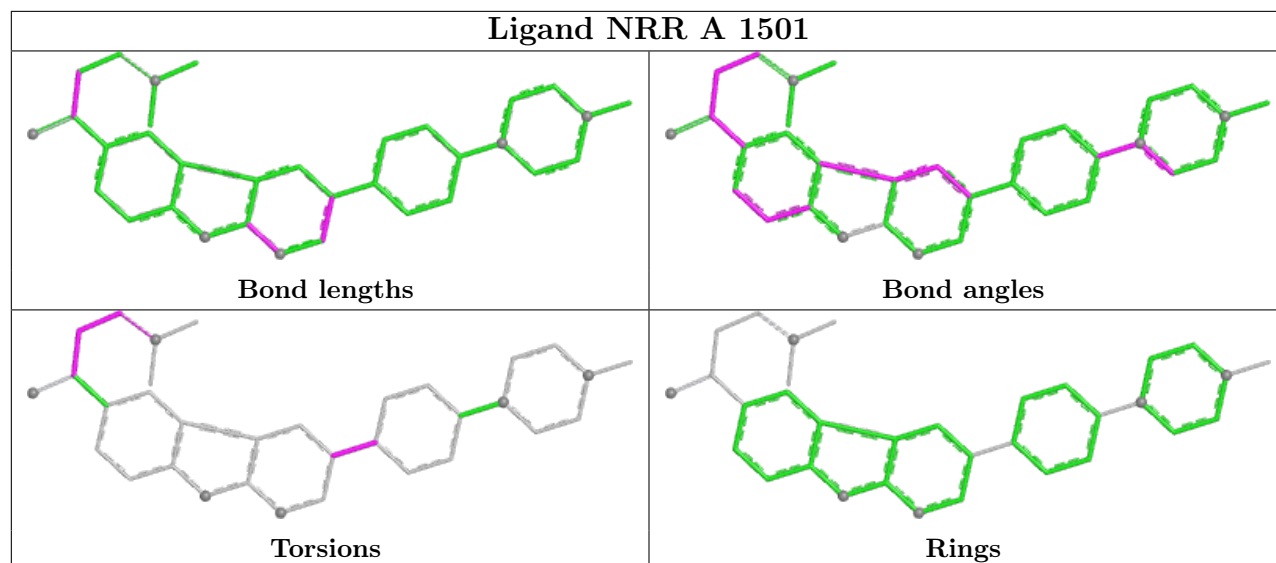
All (6) torsion outliers are listed below:

Mol	Chain	Res	Type	Atoms
2	A	1501	NRR	N1-C3-C4-C5
2	A	1501	NRR	C3-C4-C5-O1
2	A	1501	NRR	C3-C4-C5-C6
2	A	1501	NRR	C4-C3-N1-C2
2	A	1501	NRR	C11-C12-C13-C14
2	A	1501	NRR	C11-C12-C13-C23

There are no ring outliers.

No monomer is involved in short contacts.

The following is a two-dimensional graphical depiction of Mogul quality analysis of bond lengths, bond angles, torsion angles, and ring geometry for all instances of the Ligand of Interest. In addition, ligands with molecular weight > 250 and outliers as shown on the validation Tables will also be included. For torsion angles, if less than 5% of the Mogul distribution of torsion angles is within 10 degrees of the torsion angle in question, then that torsion angle is considered an outlier. Any bond that is central to one or more torsion angles identified as an outlier by Mogul will be highlighted in the graph. For rings, the root-mean-square deviation (RMSD) between the ring in question and similar rings identified by Mogul is calculated over all ring torsion angles. If the average RMSD is greater than 60 degrees and the minimal RMSD between the ring in question and any Mogul-identified rings is also greater than 60 degrees, then that ring is considered an outlier. The outliers are highlighted in purple. The color gray indicates Mogul did not find sufficient equivalents in the CSD to analyse the geometry.



5.7 Other polymers [i](#)

There are no such residues in this entry.

5.8 Polymer linkage issues [i](#)

There are no chain breaks in this entry.

6 Fit of model and data

6.1 Protein, DNA and RNA chains

In the following table, the column labelled ‘#RSRZ> 2’ contains the number (and percentage) of RSRZ outliers, followed by percent RSRZ outliers for the chain as percentile scores relative to all X-ray entries and entries of similar resolution. The OWAB column contains the minimum, median, 95th percentile and maximum values of the occupancy-weighted average B-factor per residue. The column labelled ‘Q< 0.9’ lists the number of (and percentage) of residues with an average occupancy less than 0.9.

Mol	Chain	Analysed	<RSRZ>	#RSRZ>2	OWAB(Å ²)	Q<0.9
1	A	275/321 (85%)	0.91	46 (16%) 1 1	21, 38, 96, 122	1 (0%)

All (46) RSRZ outliers are listed below:

Mol	Chain	Res	Type	RSRZ
1	A	1399	ILE	7.8
1	A	1215	PRO	6.2
1	A	1157	SER	6.2
1	A	1156	CYS	6.0
1	A	1216	SER	5.9
1	A	1106	SER	5.7
1	A	1190	LEU	5.3
1	A	1188	GLN	5.2
1	A	1158	GLU	4.9
1	A	1155	VAL	4.9
1	A	1214	ARG	4.8
1	A	1153	PRO	4.7
1	A	1112	PRO	4.6
1	A	1274	ALA	4.5
1	A	1187	LEU	4.4
1	A	1159	GLN	4.4
1	A	1103	SER	4.1
1	A	1276	ASP	4.0
1	A	1332	SER	3.9
1	A	1275	ARG	3.8
1	A	1288	CYS	3.6
1	A	1162	LEU	3.6
1	A	1287	GLY	3.5
1	A	1165	LEU	3.3
1	A	1114	LYS	3.3
1	A	1117	THR	3.1
1	A	1104	SER	3.1

Continued on next page...

Continued from previous page...

Mol	Chain	Res	Type	RSRZ
1	A	1105	ILE	2.9
1	A	1163	ASP	2.8
1	A	1160	ASP	2.8
1	A	1217	GLN	2.7
1	A	1109	LYS	2.5
1	A	1291	LEU	2.5
1	A	1123	GLY	2.4
1	A	1107	ASP	2.4
1	A	1221	LEU	2.4
1	A	1166	MET	2.3
1	A	1191	PRO	2.3
1	A	1189	SER	2.3
1	A	1124	HIS	2.3
1	A	1277	ILE	2.3
1	A	1286	GLY	2.2
1	A	1213	PRO	2.2
1	A	1192	ARG	2.1
1	A	1331	PRO	2.1
1	A	1130	VAL	2.0

6.2 Non-standard residues in protein, DNA, RNA chains [i](#)

There are no non-standard protein/DNA/RNA residues in this entry.

6.3 Carbohydrates [i](#)

There are no monosaccharides in this entry.

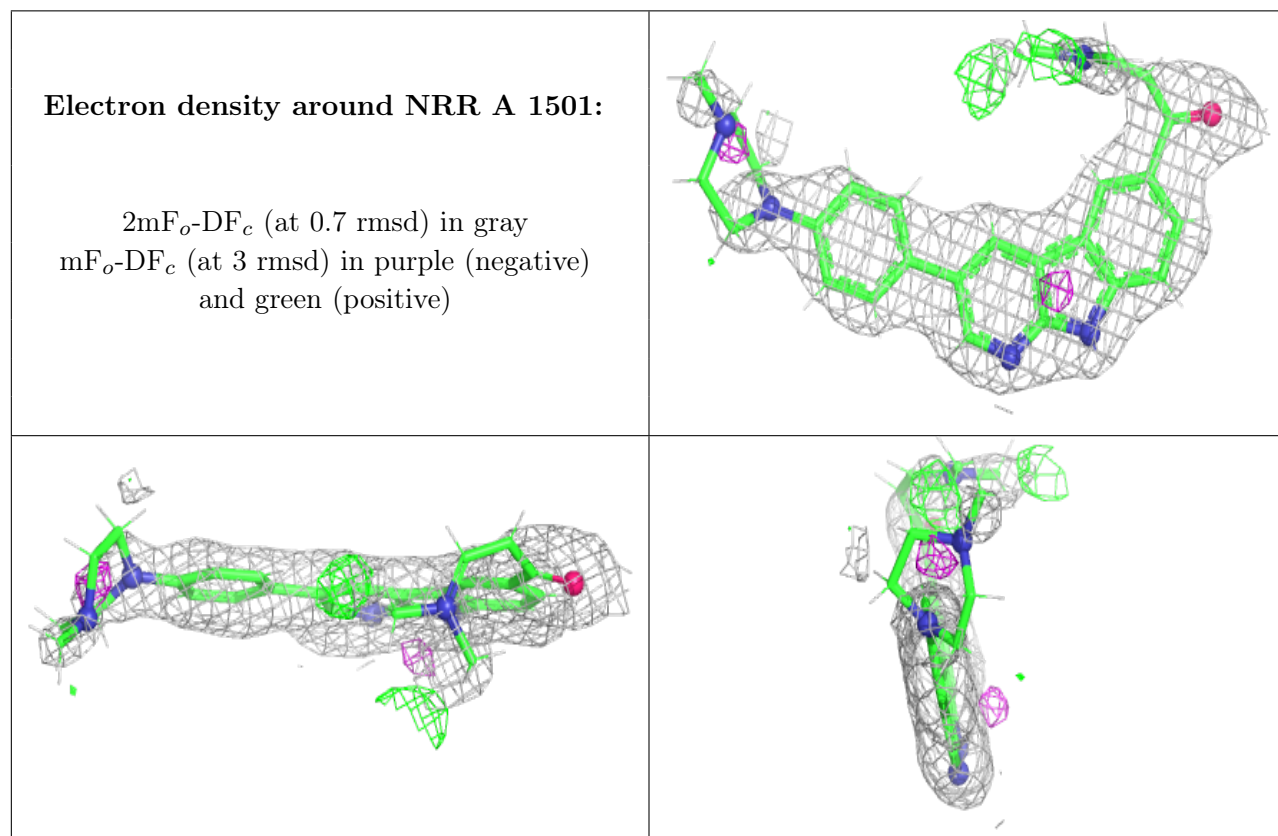
6.4 Ligands [i](#)

In the following table, the Atoms column lists the number of modelled atoms in the group and the number defined in the chemical component dictionary. The B-factors column lists the minimum, median, 95th percentile and maximum values of B factors of atoms in the group. The column labelled 'Q<0.9' lists the number of atoms with occupancy less than 0.9.

Mol	Type	Chain	Res	Atoms	RSCC	RSR	B-factors(\AA^2)	Q<0.9
2	NRR	A	1501	33/33	0.87	0.18	34,64,92,95	0

The following is a graphical depiction of the model fit to experimental electron density of all instances of the Ligand of Interest. In addition, ligands with molecular weight > 250 and outliers

as shown on the geometry validation Tables will also be included. Each fit is shown from different orientation to approximate a three-dimensional view.



6.5 Other polymers [i](#)

There are no such residues in this entry.