



# Full wwPDB X-ray Structure Validation Report ⓘ

Dec 6, 2022 – 12:22 pm GMT

PDB ID : 8A76  
Title : Metallo-beta-lactamase NDM-1 in complex with 1,2,4-Triazole-3-thione compound 26  
Authors : Vascon, F.; Legru, A.; Hernandez, J.F.; Cendron, L.  
Deposited on : 2022-06-20  
Resolution : 1.50 Å(reported)

This is a Full wwPDB X-ray Structure Validation Report for a publicly released PDB entry.

We welcome your comments at [validation@mail.wwpdb.org](mailto:validation@mail.wwpdb.org)

A user guide is available at

<https://www.wwpdb.org/validation/2017/XrayValidationReportHelp>

with specific help available everywhere you see the ⓘ symbol.

The types of validation reports are described at

<http://www.wwpdb.org/validation/2017/FAQs#types>.

---

The following versions of software and data (see [references ⓘ](#)) were used in the production of this report:

MolProbity : 4.02b-467  
Mogul : 1.8.4, CSD as541be (2020)  
Xtrriage (Phenix) : 1.13  
EDS : 2.31.3  
buster-report : 1.1.7 (2018)  
Percentile statistics : 20191225.v01 (using entries in the PDB archive December 25th 2019)  
Refmac : 5.8.0267  
CCP4 : 7.1.010 (Gargrove)  
Ideal geometry (proteins) : Engh & Huber (2001)  
Ideal geometry (DNA, RNA) : Parkinson et al. (1996)  
Validation Pipeline (wwPDB-VP) : 2.31.3

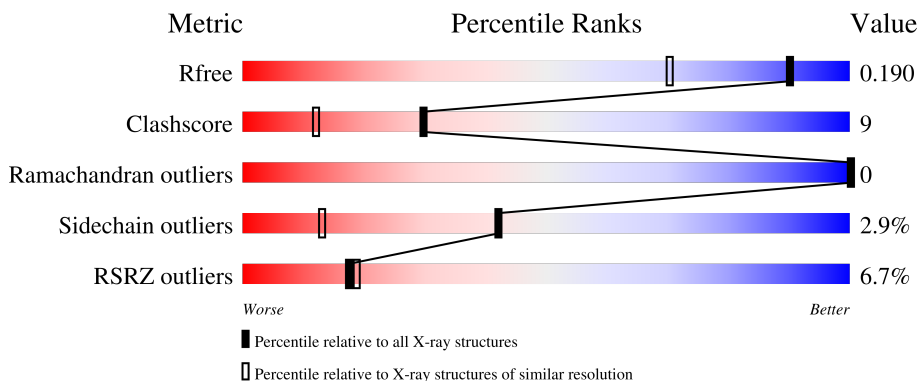
# 1 Overall quality at a glance

The following experimental techniques were used to determine the structure:

*X-RAY DIFFRACTION*

The reported resolution of this entry is 1.50 Å.

Percentile scores (ranging between 0-100) for global validation metrics of the entry are shown in the following graphic. The table shows the number of entries on which the scores are based.



Metric	Whole archive (#Entries)	Similar resolution (#Entries, resolution range(Å))
$R_{free}$	130704	2936 (1.50-1.50)
Clashscore	141614	3144 (1.50-1.50)
Ramachandran outliers	138981	3066 (1.50-1.50)
Sidechain outliers	138945	3064 (1.50-1.50)
RSRZ outliers	127900	2884 (1.50-1.50)

The table below summarises the geometric issues observed across the polymeric chains and their fit to the electron density. The red, orange, yellow and green segments of the lower bar indicate the fraction of residues that contain outliers for  $\geq 3$ , 2, 1 and 0 types of geometric quality criteria respectively. A grey segment represents the fraction of residues that are not modelled. The numeric value for each fraction is indicated below the corresponding segment, with a dot representing fractions  $\leq 5\%$ . The upper red bar (where present) indicates the fraction of residues that have poor fit to the electron density. The numeric value is given above the bar.

Mol	Chain	Length	Quality of chain
1	A	241	 6% 83% 12% . .
1	B	241	 7% 80% 15% .

The following table lists non-polymeric compounds, carbohydrate monomers and non-standard residues in protein, DNA, RNA chains that are outliers for geometric or electron-density-fit criteria:

Mol	Type	Chain	Res	Chirality	Geometry	Clashes	Electron density
6	PEG	A	310	-	-	X	-

## 2 Entry composition [i](#)

There are 8 unique types of molecules in this entry. The entry contains 3976 atoms, of which 0 are hydrogens and 0 are deuteriums.

In the tables below, the ZeroOcc column contains the number of atoms modelled with zero occupancy, the AltConf column contains the number of residues with at least one atom in alternate conformation and the Trace column contains the number of residues modelled with at most 2 atoms.

- Molecule 1 is a protein called Metallo-beta-lactamase NDM-1.

Mol	Chain	Residues	Atoms					ZeroOcc	AltConf	Trace
			Total	C	N	O	S			
1	A	231	1747	1096	310	332	9	0	4	0
1	B	231	1807	1135	322	341	9	0	11	0

There are 2 discrepancies between the modelled and reference sequences:

Chain	Residue	Modelled	Actual	Comment	Reference
A	?	-	ARG	deletion	UNP M4JT39
B	?	-	ARG	deletion	UNP M4JT39

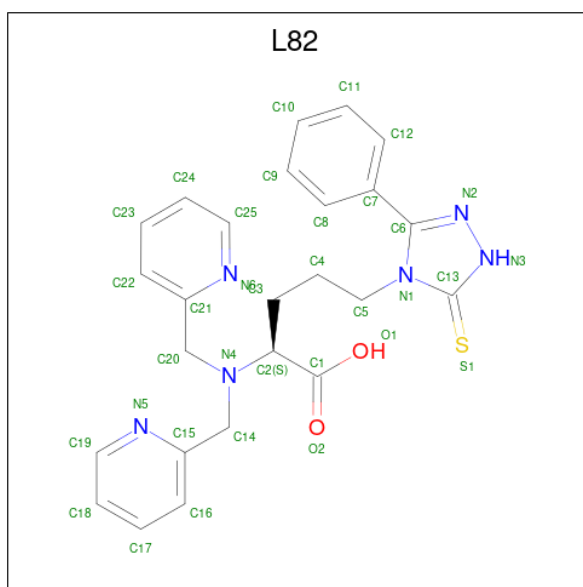
- Molecule 2 is ZINC ION (three-letter code: ZN) (formula: Zn).

Mol	Chain	Residues	Atoms		ZeroOcc	AltConf
			Total	Zn		
2	A	2	2	2	0	0
2	B	2	2	2	0	0

- Molecule 3 is CALCIUM ION (three-letter code: CA) (formula: Ca).

Mol	Chain	Residues	Atoms		ZeroOcc	AltConf
			Total	Ca		
3	A	2	2	2	0	0
3	B	2	2	2	0	0

- Molecule 4 is (2 {S})-2-[bis(pyridin-2-ylmethyl)amino]-5-(3-phenyl-5-sulfanylidene-1 {H})-1,2,4-triazol-4-yl)pentanoic acid (three-letter code: L82) (formula: C<sub>25</sub>H<sub>26</sub>N<sub>6</sub>O<sub>2</sub>S) (labeled as "Ligand of Interest" by depositor).



Mol	Chain	Residues	Atoms					ZeroOcc	AltConf
			Total	C	N	O	S		
4	A	1	34	25	6	2	1	0	0

- Molecule 5 is 1,2-ETHANEDIOL (three-letter code: EDO) (formula: C<sub>2</sub>H<sub>6</sub>O<sub>2</sub>).



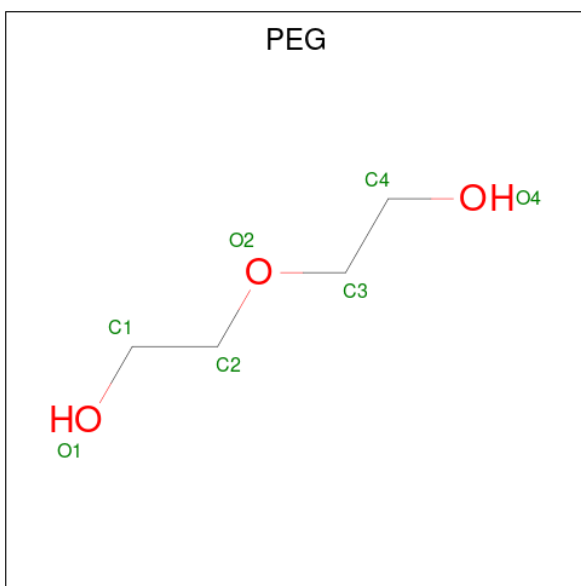
Mol	Chain	Residues	Atoms		ZeroOcc	AltConf
			Total	C O		
5	A	1	4	2 2	0	0
5	A	1	4	2 2	0	0
5	A	1	4	2 2	0	0

*Continued on next page...*

Continued from previous page...

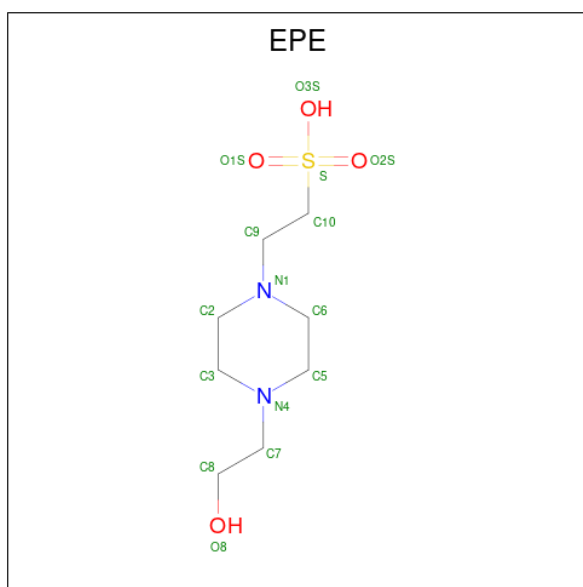
Mol	Chain	Residues	Atoms	ZeroOcc	AltConf
5	B	1	Total C O 4 2 2	0	0
5	B	1	Total C O 4 2 2	0	0
5	B	1	Total C O 4 2 2	0	0
5	B	1	Total C O 4 2 2	0	0
5	B	1	Total C O 4 2 2	0	0

- Molecule 6 is DI(HYDROXYETHYL)ETHER (three-letter code: PEG) (formula: C<sub>4</sub>H<sub>10</sub>O<sub>3</sub>).



Mol	Chain	Residues	Atoms	ZeroOcc	AltConf
6	A	1	Total C O 7 4 3	0	0
6	A	1	Total C O 7 4 3	0	0
6	A	1	Total C O 7 4 3	0	0
6	A	1	Total C O 7 4 3	0	0
6	A	1	Total C O 7 4 3	0	0

- Molecule 7 is 4-(2-HYDROXYETHYL)-1-PIPERAZINE ETHANESULFONIC ACID (three-letter code: EPE) (formula: C<sub>8</sub>H<sub>18</sub>N<sub>2</sub>O<sub>4</sub>S).



Mol	Chain	Residues	Atoms					ZeroOcc	AltConf
			Total	C	N	O	S		
7	B	1	15	8	2	4	1	0	0

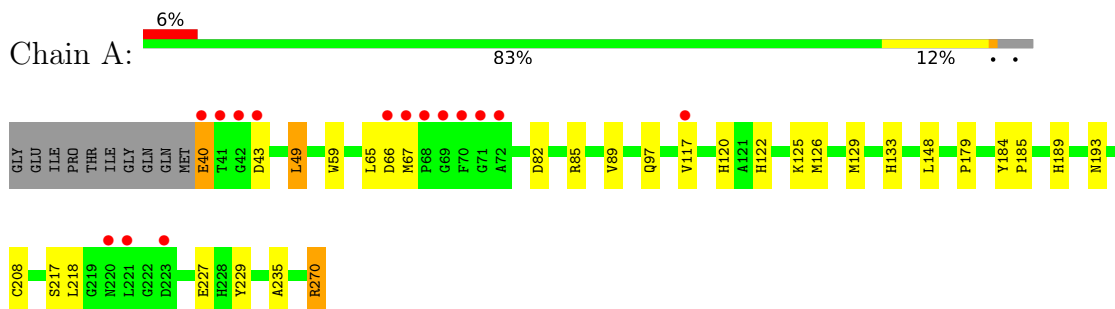
- Molecule 8 is water.

Mol	Chain	Residues	Atoms		ZeroOcc	AltConf
8	A	143	Total	O	0	0
			143	143		
8	B	155	Total	O	0	0
			155	155		

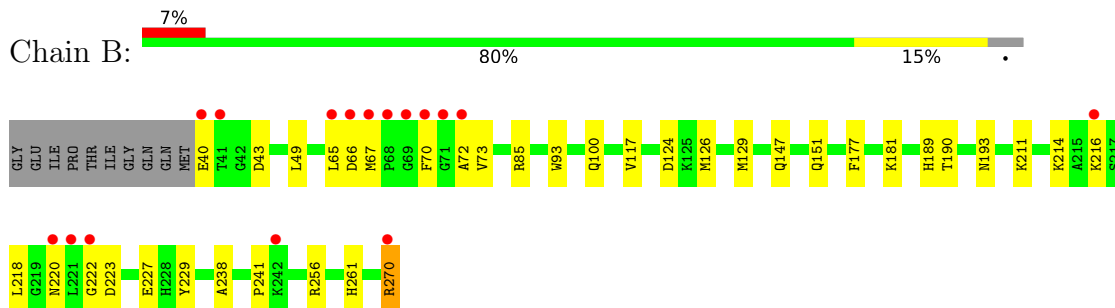
### 3 Residue-property plots [i](#)

These plots are drawn for all protein, RNA, DNA and oligosaccharide chains in the entry. The first graphic for a chain summarises the proportions of the various outlier classes displayed in the second graphic. The second graphic shows the sequence view annotated by issues in geometry and electron density. Residues are color-coded according to the number of geometric quality criteria for which they contain at least one outlier: green = 0, yellow = 1, orange = 2 and red = 3 or more. A red dot above a residue indicates a poor fit to the electron density ( $RSRZ > 2$ ). Stretches of 2 or more consecutive residues without any outlier are shown as a green connector. Residues present in the sample, but not in the model, are shown in grey.

- Molecule 1: Metallo-beta-lactamase NDM-1



- Molecule 1: Metallo-beta-lactamase NDM-1





## 4 Data and refinement statistics

Property	Value	Source
Space group	P 21 21 21	Depositor
Cell constants a, b, c, $\alpha$ , $\beta$ , $\gamma$	70.33Å 73.90Å 77.29Å 90.00° 90.00° 90.00°	Depositor
Resolution (Å)	42.57 – 1.50 42.54 – 1.50	Depositor EDS
% Data completeness (in resolution range)	99.9 (42.57-1.50) 100.0 (42.54-1.50)	Depositor EDS
$R_{merge}$	(Not available)	Depositor
$R_{sym}$	(Not available)	Depositor
$\langle I/\sigma(I) \rangle$ <sup>1</sup>	2.72 (at 1.50Å)	Xtrriage
Refinement program	REFMAC 5.8.0267	Depositor
R, $R_{free}$	0.166 , 0.188 0.167 , 0.190	Depositor DCC
$R_{free}$ test set	3241 reflections (4.98%)	wwPDB-VP
Wilson B-factor (Å <sup>2</sup> )	20.2	Xtrriage
Anisotropy	0.061	Xtrriage
Bulk solvent $k_{sol}$ (e/Å <sup>3</sup> ), $B_{sol}$ (Å <sup>2</sup> )	(Not available) , (Not available)	EDS
L-test for twinning <sup>2</sup>	$\langle  L  \rangle = 0.50$ , $\langle L^2 \rangle = 0.34$	Xtrriage
Estimated twinning fraction	0.006 for -h,l,k	Xtrriage
$F_o, F_c$ correlation	0.97	EDS
Total number of atoms	3976	wwPDB-VP
Average B, all atoms (Å <sup>2</sup> )	23.0	wwPDB-VP

Xtrriage's analysis on translational NCS is as follows: *The largest off-origin peak in the Patterson function is 4.90% of the height of the origin peak. No significant pseudotranslation is detected.*

<sup>1</sup>Intensities estimated from amplitudes.

<sup>2</sup>Theoretical values of  $\langle |L| \rangle$ ,  $\langle L^2 \rangle$  for acentric reflections are 0.5, 0.333 respectively for untwinned datasets, and 0.375, 0.2 for perfectly twinned datasets.

## 5 Model quality [i](#)

### 5.1 Standard geometry [i](#)

Bond lengths and bond angles in the following residue types are not validated in this section: EPE, CA, L82, ZN, PEG, EDO

The Z score for a bond length (or angle) is the number of standard deviations the observed value is removed from the expected value. A bond length (or angle) with  $|Z| > 5$  is considered an outlier worth inspection. RMSZ is the root-mean-square of all Z scores of the bond lengths (or angles).

Mol	Chain	Bond lengths		Bond angles	
		RMSZ	# $ Z  > 5$	RMSZ	# $ Z  > 5$
1	A	0.57	1/1787 (0.1%)	0.95	3/2433 (0.1%)
1	B	0.58	0/1848	0.95	3/2513 (0.1%)
All	All	0.58	1/3635 (0.0%)	0.95	6/4946 (0.1%)

All (1) bond length outliers are listed below:

Mol	Chain	Res	Type	Atoms	Z	Observed(Å)	Ideal(Å)
1	A	122	HIS	CG-ND1	5.29	1.50	1.38

All (6) bond angle outliers are listed below:

Mol	Chain	Res	Type	Atoms	Z	Observed(°)	Ideal(°)
1	B	256	ARG	NE-CZ-NH1	6.09	123.34	120.30
1	A	184	TYR	CB-CG-CD2	-5.94	117.43	121.00
1	B	85	ARG	CG-CD-NE	-5.86	99.49	111.80
1	B	85	ARG	NE-CZ-NH2	-5.61	117.50	120.30
1	A	85	ARG	NE-CZ-NH2	-5.48	117.56	120.30
1	A	122	HIS	CG-ND1-CE1	-5.22	98.91	105.70

There are no chirality outliers.

There are no planarity outliers.

### 5.2 Too-close contacts [i](#)

In the following table, the Non-H and H(model) columns list the number of non-hydrogen atoms and hydrogen atoms in the chain respectively. The H(added) column lists the number of hydrogen atoms added and optimized by MolProbity. The Clashes column lists the number of clashes within the asymmetric unit, whereas Symm-Clashes lists symmetry-related clashes.

Mol	Chain	Non-H	H(model)	H(added)	Clashes	Symm-Clashes
1	A	1747	0	1690	31	0
1	B	1807	0	1756	29	0
2	A	2	0	0	0	0
2	B	2	0	0	0	0
3	A	2	0	0	0	0
3	B	2	0	0	0	0
4	A	34	0	0	5	0
5	A	12	0	17	1	0
5	B	20	0	30	3	0
6	A	35	0	50	17	0
7	B	15	0	17	2	0
8	A	143	0	0	1	0
8	B	155	0	0	10	0
All	All	3976	0	3560	68	0

The all-atom clashscore is defined as the number of clashes found per 1000 atoms (including hydrogen atoms). The all-atom clashscore for this structure is 9.

All (68) close contacts within the same asymmetric unit are listed below, sorted by their clash magnitude.

Atom-1	Atom-2	Interatomic distance (Å)	Clash overlap (Å)
1:A:148:LEU:HD13	5:A:307:EDO:H22	1.49	0.94
4:A:304:L82:O2	8:A:401:HOH:O	1.95	0.84
1:A:59:TRP:HE1	6:A:308:PEG:H41	1.48	0.79
1:B:40:GLU:HB2	1:B:43:ASP:OD2	1.89	0.73
1:A:185:PRO:O	6:A:310:PEG:H32	1.89	0.72
5:B:308:EDO:C1	8:B:401:HOH:O	2.38	0.71
1:A:65:LEU:HD23	1:A:67:MET:HG2	1.72	0.70
1:B:261:HIS:HD2	8:B:465:HOH:O	1.73	0.70
1:A:179:PRO:HG3	6:A:309:PEG:H21	1.71	0.70
1:A:270:ARG:CG	1:A:270:ARG:HH11	2.05	0.69
1:B:100:GLN:CD	8:B:405:HOH:O	2.30	0.69
4:A:304:L82:C16	4:A:304:L82:C22	2.71	0.68
5:B:308:EDO:H11	8:B:401:HOH:O	1.93	0.68
1:A:270:ARG:HH11	1:A:270:ARG:HG2	1.58	0.67
7:B:305:EPE:O8	7:B:305:EPE:H32	1.95	0.66
1:B:227:GLU:HG3	1:B:270:ARG:HH12	1.62	0.65
1:A:218:LEU:H	6:A:306:PEG:H11	1.64	0.62
6:A:310:PEG:C4	1:B:151:GLN:HE22	2.13	0.62
1:A:82:ASP:HA	6:A:309:PEG:H22	1.83	0.61
1:B:220:ASN:ND2	1:B:222:GLY:H	1.99	0.61
1:A:129[B]:MET:HG3	1:A:133:HIS:CE1	2.36	0.60

*Continued on next page...*

*Continued from previous page...*

Atom-1	Atom-2	Interatomic distance (Å)	Clash overlap (Å)
1:A:235:ALA:HB2	6:A:310:PEG:H22	1.82	0.60
1:A:59:TRP:HE1	6:A:308:PEG:C4	2.15	0.60
1:B:216:LYS:NZ	8:B:404:HOH:O	2.34	0.59
1:A:270:ARG:HB3	1:A:270:ARG:NH1	2.19	0.58
1:B:67:MET:HB2	1:B:70:PHE:HB2	1.85	0.58
6:A:310:PEG:C4	1:B:151:GLN:NE2	2.66	0.57
7:B:305:EPE:O8	7:B:305:EPE:C3	2.53	0.56
1:A:217:SER:OG	4:A:304:L82:C18	2.55	0.55
1:B:126:MET:O	1:B:129:MET:HG2	2.06	0.55
1:B:67:MET:HG3	1:B:73:VAL:CG2	2.36	0.55
1:A:235:ALA:CB	6:A:310:PEG:H22	2.37	0.55
1:B:238:ALA:O	1:B:241[B]:PRO:HD3	2.08	0.54
1:A:218:LEU:N	6:A:306:PEG:H11	2.24	0.53
1:A:227:GLU:OE1	1:B:223[A]:ASP:OD1	2.27	0.53
5:B:308:EDO:O1	8:B:401:HOH:O	2.19	0.53
1:B:67:MET:HG3	1:B:73:VAL:HG21	1.89	0.52
1:A:126:MET:O	1:A:129[A]:MET:HG2	2.09	0.52
1:A:120:HIS:HE1	1:A:208:CYS:SG	2.33	0.51
1:A:270:ARG:HH11	1:A:270:ARG:CB	2.25	0.50
1:B:100:GLN:HG2	8:B:405:HOH:O	2.12	0.50
6:A:310:PEG:H12	1:B:147:GLN:HG3	1.93	0.49
1:B:261:HIS:HE1	8:B:541:HOH:O	1.96	0.48
1:A:89:VAL:HG22	1:A:117[B]:VAL:HG22	1.96	0.47
1:B:65[A]:LEU:HG	1:B:67:MET:HG2	1.96	0.47
1:B:100:GLN:CG	8:B:405:HOH:O	2.61	0.47
1:A:270:ARG:NH1	1:A:270:ARG:CB	2.78	0.46
1:A:67:MET:SD	4:A:304:L82:C11	3.03	0.46
1:B:117[A]:VAL:HG21	1:B:177:PHE:CE2	2.52	0.45
6:A:310:PEG:H12	1:B:147:GLN:HE21	1.81	0.45
1:B:227:GLU:HG3	1:B:270:ARG:NH1	2.31	0.45
6:A:309:PEG:H11	6:A:309:PEG:H41	1.99	0.44
1:B:211:LYS:HE3	1:B:218:LEU:O	2.18	0.44
1:A:133:HIS:HB3	6:A:312:PEG:H42	1.99	0.44
1:B:65[A]:LEU:O	1:B:72:ALA:HA	2.17	0.44
1:A:189:HIS:CE1	4:A:304:L82:S1	3.11	0.44
6:A:310:PEG:H42	1:B:151:GLN:NE2	2.32	0.43
1:A:49:LEU:HD21	1:A:97:GLN:HB3	2.01	0.42
1:A:66:ASP:OD1	1:A:66:ASP:N	2.38	0.42
1:A:40:GLU:HB3	1:A:43:ASP:OD2	2.20	0.42
1:B:65[A]:LEU:HD12	1:B:66:ASP:N	2.35	0.41
1:A:40:GLU:CB	1:A:43:ASP:OD2	2.68	0.41

*Continued on next page...*

Continued from previous page...

Atom-1	Atom-2	Interatomic distance (Å)	Clash overlap (Å)
1:B:93:TRP:CZ3	1:B:124:ASP:HB3	2.56	0.41
1:B:189:HIS:CD2	1:B:190:THR:HG23	2.56	0.41
1:A:227:GLU:HG3	1:A:270:ARG:NH1	2.35	0.41
6:A:310:PEG:H11	8:B:440:HOH:O	2.22	0.40
1:A:125:LYS:HE2	1:A:125:LYS:HA	2.02	0.40
1:B:181[B]:LYS:HA	1:B:181[B]:LYS:HD3	1.77	0.40

There are no symmetry-related clashes.

## 5.3 Torsion angles [i](#)

### 5.3.1 Protein backbone [i](#)

In the following table, the Percentiles column shows the percent Ramachandran outliers of the chain as a percentile score with respect to all X-ray entries followed by that with respect to entries of similar resolution.

The Analysed column shows the number of residues for which the backbone conformation was analysed, and the total number of residues.

Mol	Chain	Analysed	Favoured	Allowed	Outliers	Percentiles	
1	A	233/241 (97%)	229 (98%)	4 (2%)	0	100	100
1	B	240/241 (100%)	235 (98%)	5 (2%)	0	100	100
All	All	473/482 (98%)	464 (98%)	9 (2%)	0	100	100

There are no Ramachandran outliers to report.

### 5.3.2 Protein sidechains [i](#)

In the following table, the Percentiles column shows the percent sidechain outliers of the chain as a percentile score with respect to all X-ray entries followed by that with respect to entries of similar resolution.

The Analysed column shows the number of residues for which the sidechain conformation was analysed, and the total number of residues.

Mol	Chain	Analysed	Rotameric	Outliers	Percentiles	
1	A	177/181 (98%)	172 (97%)	5 (3%)	43	14
1	B	184/181 (102%)	178 (97%)	6 (3%)	38	10

Continued on next page...

*Continued from previous page...*

Mol	Chain	Analysed	Rotameric	Outliers	Percentiles
All	All	361/362 (100%)	350 (97%)	11 (3%)	42 12

All (11) residues with a non-rotameric sidechain are listed below:

Mol	Chain	Res	Type
1	A	40	GLU
1	A	49	LEU
1	A	193	ASN
1	A	229	TYR
1	A	270	ARG
1	B	49[A]	LEU
1	B	49[B]	LEU
1	B	193	ASN
1	B	214	LYS
1	B	229	TYR
1	B	270	ARG

Sometimes sidechains can be flipped to improve hydrogen bonding and reduce clashes. All (5) such sidechains are listed below:

Mol	Chain	Res	Type
1	A	123	GLN
1	A	220	ASN
1	B	176	ASN
1	B	220	ASN
1	B	261	HIS

### 5.3.3 RNA [i](#)

There are no RNA molecules in this entry.

### 5.4 Non-standard residues in protein, DNA, RNA chains [i](#)

There are no non-standard protein/DNA/RNA residues in this entry.

### 5.5 Carbohydrates [i](#)

There are no monosaccharides in this entry.

## 5.6 Ligand geometry i

Of 23 ligands modelled in this entry, 8 are monoatomic - leaving 15 for Mogul analysis.

In the following table, the Counts columns list the number of bonds (or angles) for which Mogul statistics could be retrieved, the number of bonds (or angles) that are observed in the model and the number of bonds (or angles) that are defined in the Chemical Component Dictionary. The Link column lists molecule types, if any, to which the group is linked. The Z score for a bond length (or angle) is the number of standard deviations the observed value is removed from the expected value. A bond length (or angle) with  $|Z| > 2$  is considered an outlier worth inspection. RMSZ is the root-mean-square of all Z scores of the bond lengths (or angles).

Mol	Type	Chain	Res	Link	Bond lengths			Bond angles		
					Counts	RMSZ	# Z  > 2	Counts	RMSZ	# Z  > 2
6	PEG	A	308	-	6,6,6	0.68	0	5,5,5	1.19	0
7	EPE	B	305	-	15,15,15	0.79	1 (6%)	18,20,20	1.32	2 (11%)
5	EDO	B	307	-	3,3,3	0.50	0	2,2,2	0.93	0
6	PEG	A	312	-	6,6,6	0.75	0	5,5,5	1.25	1 (20%)
6	PEG	A	306	-	6,6,6	0.44	0	5,5,5	0.48	0
6	PEG	A	310	-	6,6,6	0.47	0	5,5,5	1.14	1 (20%)
5	EDO	B	308	-	3,3,3	0.45	0	2,2,2	0.98	0
4	L82	A	304	2	37,37,37	1.57	2 (5%)	48,49,49	2.00	9 (18%)
5	EDO	A	305	-	3,3,3	0.06	0	2,2,2	0.24	0
6	PEG	A	309	-	6,6,6	0.51	0	5,5,5	0.68	0
5	EDO	B	310	-	3,3,3	0.33	0	2,2,2	0.78	0
5	EDO	B	309	-	3,3,3	0.10	0	2,2,2	0.22	0
5	EDO	A	311	-	3,3,3	0.21	0	2,2,2	0.53	0
5	EDO	B	306	-	3,3,3	0.09	0	2,2,2	0.48	0
5	EDO	A	307	-	3,3,3	0.70	0	2,2,2	0.08	0

In the following table, the Chirals column lists the number of chiral outliers, the number of chiral centers analysed, the number of these observed in the model and the number defined in the Chemical Component Dictionary. Similar counts are reported in the Torsion and Rings columns. '-' means no outliers of that kind were identified.

Mol	Type	Chain	Res	Link	Chirals	Torsions	Rings
6	PEG	A	308	-	-	0/4/4/4	-
7	EPE	B	305	-	-	2/9/19/19	0/1/1/1
5	EDO	B	307	-	-	1/1/1/1	-
6	PEG	A	312	-	-	2/4/4/4	-
6	PEG	A	306	-	-	1/4/4/4	-
6	PEG	A	310	-	-	3/4/4/4	-
5	EDO	B	308	-	-	1/1/1/1	-
4	L82	A	304	2	-	5/26/26/26	0/4/4/4

*Continued on next page...*

*Continued from previous page...*

Mol	Type	Chain	Res	Link	Chirals	Torsions	Rings
5	EDO	A	305	-	-	1/1/1/1	-
6	PEG	A	309	-	-	4/4/4/4	-
5	EDO	B	310	-	-	1/1/1/1	-
5	EDO	B	309	-	-	0/1/1/1	-
5	EDO	A	311	-	-	1/1/1/1	-
5	EDO	B	306	-	-	1/1/1/1	-
5	EDO	A	307	-	-	1/1/1/1	-

All (3) bond length outliers are listed below:

Mol	Chain	Res	Type	Atoms	Z	Observed(Å)	Ideal(Å)
4	A	304	L82	C13-S1	7.52	1.80	1.67
7	B	305	EPE	O1S-S	2.48	1.52	1.45
4	A	304	L82	C7-C6	2.40	1.51	1.47

All (13) bond angle outliers are listed below:

Mol	Chain	Res	Type	Atoms	Z	Observed(°)	Ideal(°)
4	A	304	L82	C13-N3-N2	-5.75	110.31	113.95
4	A	304	L82	N3-C13-N1	5.22	107.65	103.82
4	A	304	L82	C1-C2-N4	-5.01	99.80	111.20
4	A	304	L82	C11-C12-C7	-3.95	115.66	120.34
4	A	304	L82	C25-N6-C21	3.33	121.99	117.42
4	A	304	L82	C14-N4-C2	-3.11	105.47	113.73
7	B	305	EPE	O1S-S-C10	-3.06	103.23	106.92
4	A	304	L82	C12-C7-C8	2.89	122.70	118.59
7	B	305	EPE	O3S-S-O2S	2.79	118.08	111.27
4	A	304	L82	C3-C2-C1	-2.56	106.23	112.04
4	A	304	L82	C19-N5-C15	2.53	120.88	117.42
6	A	312	PEG	O2-C3-C4	2.19	119.70	110.07
6	A	310	PEG	O2-C3-C4	-2.05	101.07	110.07

There are no chirality outliers.

All (24) torsion outliers are listed below:

Mol	Chain	Res	Type	Atoms
4	A	304	L82	C1-C2-C3-C4
4	A	304	L82	C21-C20-N4-C14
6	A	309	PEG	C1-C2-O2-C3
6	A	312	PEG	O2-C3-C4-O4
5	A	307	EDO	O1-C1-C2-O2

*Continued on next page...*



*Continued from previous page...*

Mol	Chain	Res	Type	Atoms
5	B	307	EDO	O1-C1-C2-O2
5	B	308	EDO	O1-C1-C2-O2
5	B	310	EDO	O1-C1-C2-O2
4	A	304	L82	O1-C1-C2-N4
4	A	304	L82	O2-C1-C2-N4
6	A	309	PEG	O1-C1-C2-O2
6	A	310	PEG	O2-C3-C4-O4
4	A	304	L82	C3-C2-N4-C20
5	B	306	EDO	O1-C1-C2-O2
6	A	306	PEG	C4-C3-O2-C2
6	A	312	PEG	C1-C2-O2-C3
7	B	305	EPE	C9-C10-S-O2S
6	A	310	PEG	C1-C2-O2-C3
5	A	311	EDO	O1-C1-C2-O2
6	A	310	PEG	O1-C1-C2-O2
6	A	309	PEG	O2-C3-C4-O4
6	A	309	PEG	C4-C3-O2-C2
5	A	305	EDO	O1-C1-C2-O2
7	B	305	EPE	C9-C10-S-O1S

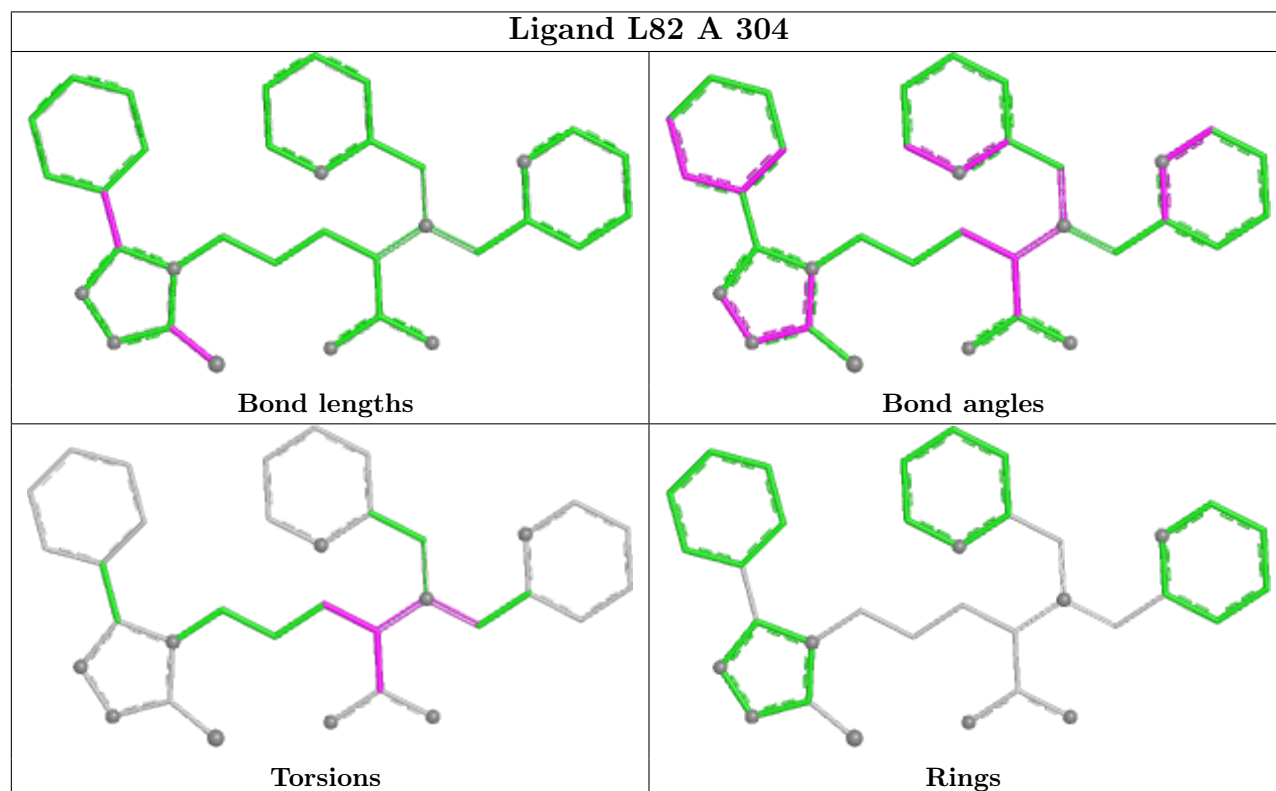
There are no ring outliers.

9 monomers are involved in 28 short contacts:

Mol	Chain	Res	Type	Clashes	Symm-Clashes
6	A	308	PEG	2	0
7	B	305	EPE	2	0
6	A	312	PEG	1	0
6	A	306	PEG	2	0
6	A	310	PEG	9	0
5	B	308	EDO	3	0
4	A	304	L82	5	0
6	A	309	PEG	3	0
5	A	307	EDO	1	0

The following is a two-dimensional graphical depiction of Mogul quality analysis of bond lengths, bond angles, torsion angles, and ring geometry for all instances of the Ligand of Interest. In addition, ligands with molecular weight > 250 and outliers as shown on the validation Tables will also be included. For torsion angles, if less than 5% of the Mogul distribution of torsion angles is within 10 degrees of the torsion angle in question, then that torsion angle is considered an outlier. Any bond that is central to one or more torsion angles identified as an outlier by Mogul will be highlighted in the graph. For rings, the root-mean-square deviation (RMSD) between the ring in question and similar rings identified by Mogul is calculated over all ring torsion angles. If the

average RMSD is greater than 60 degrees and the minimal RMSD between the ring in question and any Mogul-identified rings is also greater than 60 degrees, then that ring is considered an outlier. The outliers are highlighted in purple. The color gray indicates Mogul did not find sufficient equivalents in the CSD to analyse the geometry.



## 5.7 Other polymers [i](#)

There are no such residues in this entry.

## 5.8 Polymer linkage issues [i](#)

There are no chain breaks in this entry.

## 6 Fit of model and data

### 6.1 Protein, DNA and RNA chains

In the following table, the column labelled ‘#RSRZ > 2’ contains the number (and percentage) of RSRZ outliers, followed by percent RSRZ outliers for the chain as percentile scores relative to all X-ray entries and entries of similar resolution. The OWAB column contains the minimum, median, 95<sup>th</sup> percentile and maximum values of the occupancy-weighted average B-factor per residue. The column labelled ‘Q < 0.9’ lists the number of (and percentage) of residues with an average occupancy less than 0.9.

Mol	Chain	Analysed	<RSRZ>	#RSRZ>2	OWAB(Å <sup>2</sup> )	Q<0.9
1	A	231/241 (95%)	0.70	15 (6%) 18 20	14, 19, 40, 85	0
1	B	231/241 (95%)	0.70	16 (6%) 16 17	13, 17, 37, 77	0
All	All	462/482 (95%)	0.70	31 (6%) 17 19	13, 18, 38, 85	0

All (31) RSRZ outliers are listed below:

Mol	Chain	Res	Type	RSRZ
1	A	68	PRO	16.7
1	B	70	PHE	14.2
1	A	70	PHE	8.8
1	A	41	THR	7.9
1	B	68	PRO	7.5
1	B	69	GLY	6.2
1	B	65[A]	LEU	5.5
1	B	72	ALA	5.0
1	B	66	ASP	4.8
1	A	67	MET	4.5
1	B	67	MET	4.2
1	A	40	GLU	3.8
1	A	72	ALA	3.8
1	B	41	THR	3.7
1	A	66	ASP	3.6
1	A	42	GLY	3.5
1	A	220	ASN	3.5
1	B	222	GLY	3.5
1	A	71	GLY	3.4
1	B	220	ASN	3.2
1	B	71	GLY	3.2
1	B	270	ARG	2.9
1	A	69	GLY	2.5
1	B	221	LEU	2.4

*Continued on next page...*

*Continued from previous page...*

Mol	Chain	Res	Type	RSRZ
1	B	242[A]	LYS	2.3
1	A	117[A]	VAL	2.2
1	B	40	GLU	2.2
1	A	221	LEU	2.1
1	B	216	LYS	2.1
1	A	43	ASP	2.1
1	A	223	ASP	2.0

## 6.2 Non-standard residues in protein, DNA, RNA chains [i](#)

There are no non-standard protein/DNA/RNA residues in this entry.

## 6.3 Carbohydrates [i](#)

There are no monosaccharides in this entry.

## 6.4 Ligands [i](#)

In the following table, the Atoms column lists the number of modelled atoms in the group and the number defined in the chemical component dictionary. The B-factors column lists the minimum, median, 95<sup>th</sup> percentile and maximum values of B factors of atoms in the group. The column labelled 'Q< 0.9' lists the number of atoms with occupancy less than 0.9.

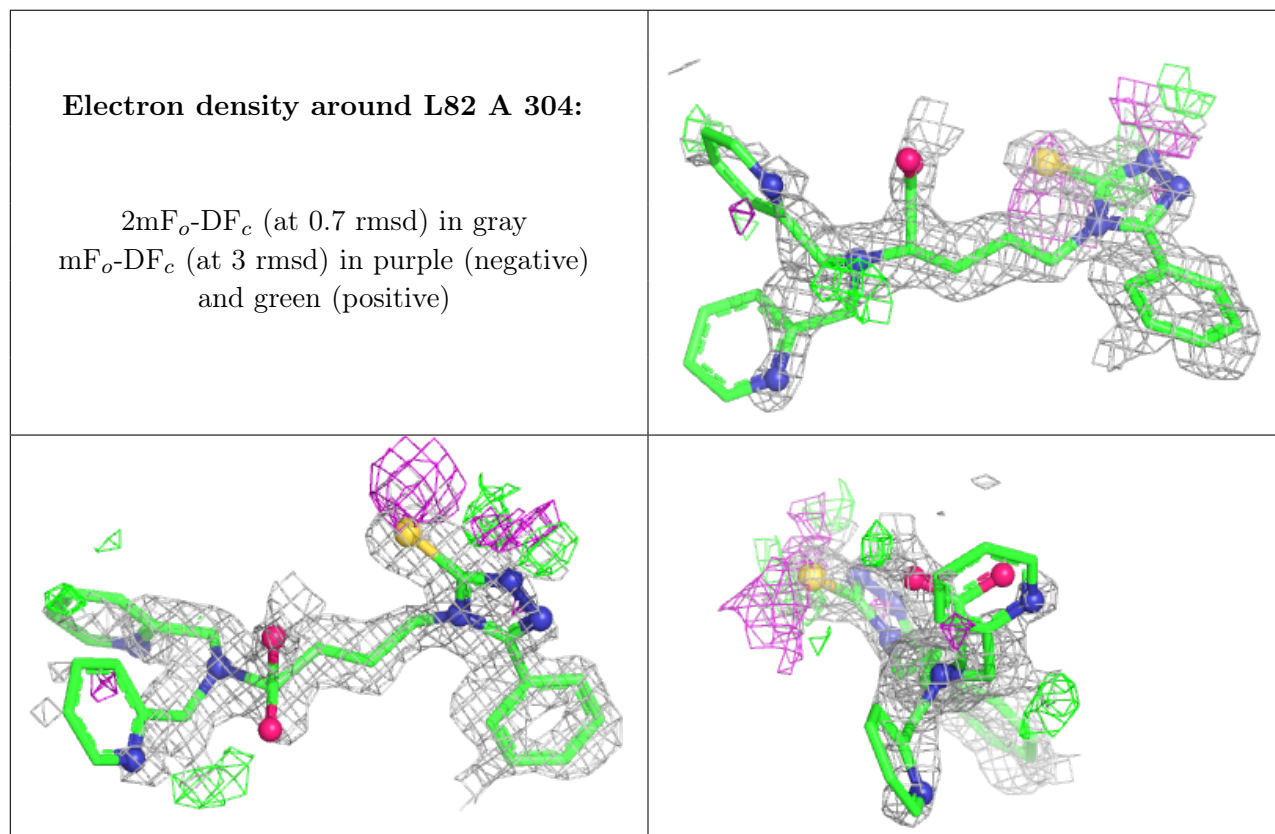
Mol	Type	Chain	Res	Atoms	RSCC	RSR	B-factors(Å <sup>2</sup> )	Q<0.9
6	PEG	A	308	7/7	0.50	0.34	36,44,56,61	0
4	L82	A	304	34/34	0.64	0.31	31,44,58,61	34
5	EDO	A	305	4/4	0.72	0.24	49,57,60,63	0
6	PEG	A	306	7/7	0.74	0.15	49,52,58,59	0
5	EDO	B	310	4/4	0.74	0.26	33,41,43,45	0
6	PEG	A	309	7/7	0.81	0.20	46,47,53,55	0
5	EDO	A	311	4/4	0.83	0.12	31,37,37,40	0
6	PEG	A	312	7/7	0.83	0.19	32,38,44,47	0
5	EDO	B	308	4/4	0.84	0.13	39,40,41,41	0
6	PEG	A	310	7/7	0.87	0.13	23,33,42,50	0
5	EDO	B	306	4/4	0.87	0.19	37,40,46,49	0
5	EDO	B	309	4/4	0.89	0.20	38,39,41,47	0
3	CA	B	303	1/1	0.91	0.37	52,52,52,52	0
5	EDO	B	307	4/4	0.93	0.17	25,34,41,44	0
2	ZN	A	301	1/1	0.94	0.09	23,23,23,23	1
7	EPE	B	305	15/15	0.95	0.15	23,27,41,49	0

*Continued on next page...*

Continued from previous page...

Mol	Type	Chain	Res	Atoms	RSCC	RSR	B-factors( $\text{\AA}^2$ )	Q<0.9
5	EDO	A	307	4/4	0.97	0.11	25,31,33,37	0
3	CA	A	313	1/1	0.98	0.18	32,32,32,32	0
2	ZN	B	302	1/1	0.99	0.09	22,22,22,22	1
3	CA	A	303	1/1	0.99	0.11	30,30,30,30	0
3	CA	B	304	1/1	0.99	0.08	25,25,25,25	0
2	ZN	A	302	1/1	1.00	0.07	20,20,20,20	1
2	ZN	B	301	1/1	1.00	0.06	18,18,18,18	1

The following is a graphical depiction of the model fit to experimental electron density of all instances of the Ligand of Interest. In addition, ligands with molecular weight > 250 and outliers as shown on the geometry validation Tables will also be included. Each fit is shown from different orientation to approximate a three-dimensional view.



## 6.5 Other polymers [i](#)

There are no such residues in this entry.