



# Full wwPDB X-ray Structure Validation Report ⓘ

Nov 29, 2022 – 03:25 pm GMT

PDB ID : 7Z6A  
Title : CRYSTAL STRUCTURE OF WEISSELLA VIRIDESCENS FEMXVV NON-RIBOSOMAL AMINO ACID TRANSFERASE IN COMPLEX WITH A PEPTIDYL-XNA CONJUGATE  
Authors : Li de la Sierra-Gallay, I.  
Deposited on : 2022-03-11  
Resolution : 1.66 Å(reported)

This is a Full wwPDB X-ray Structure Validation Report for a publicly released PDB entry.

We welcome your comments at [validation@mail.wwpdb.org](mailto:validation@mail.wwpdb.org)

A user guide is available at

<https://www.wwpdb.org/validation/2017/XrayValidationReportHelp>

with specific help available everywhere you see the ⓘ symbol.

The types of validation reports are described at

<http://www.wwpdb.org/validation/2017/FAQs#types>.

---

The following versions of software and data (see [references ⓘ](#)) were used in the production of this report:

MolProbity : 4.02b-467  
Mogul : 1.8.4, CSD as541be (2020)  
Xtriage (Phenix) : 1.13  
EDS : 2.31.3  
buster-report : 1.1.7 (2018)  
Percentile statistics : 20191225.v01 (using entries in the PDB archive December 25th 2019)  
Refmac : 5.8.0267  
CCP4 : 7.1.010 (Gargrove)  
Ideal geometry (proteins) : Engh & Huber (2001)  
Ideal geometry (DNA, RNA) : Parkinson et al. (1996)  
Validation Pipeline (wwPDB-VP) : 2.31.3

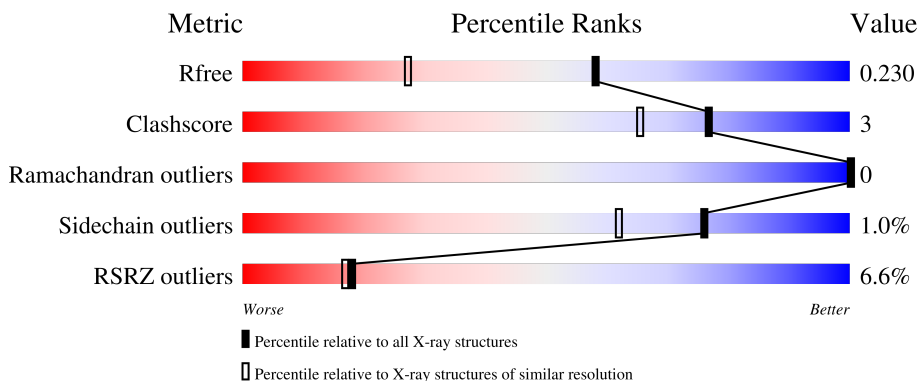
# 1 Overall quality at a glance i

The following experimental techniques were used to determine the structure:

*X-RAY DIFFRACTION*

The reported resolution of this entry is 1.66 Å.

Percentile scores (ranging between 0-100) for global validation metrics of the entry are shown in the following graphic. The table shows the number of entries on which the scores are based.



Metric	Whole archive (#Entries)	Similar resolution (#Entries, resolution range(Å))
$R_{free}$	130704	1827 (1.66-1.66)
Clashscore	141614	1931 (1.66-1.66)
Ramachandran outliers	138981	1891 (1.66-1.66)
Sidechain outliers	138945	1891 (1.66-1.66)
RSRZ outliers	127900	1791 (1.66-1.66)

The table below summarises the geometric issues observed across the polymeric chains and their fit to the electron density. The red, orange, yellow and green segments of the lower bar indicate the fraction of residues that contain outliers for  $\geq 3$ , 2, 1 and 0 types of geometric quality criteria respectively. A grey segment represents the fraction of residues that are not modelled. The numeric value for each fraction is indicated below the corresponding segment, with a dot representing fractions  $\leq 5\%$ . The upper red bar (where present) indicates the fraction of residues that have poor fit to the electron density. The numeric value is given above the bar.

Mol	Chain	Length	Quality of chain
1	A	343	 6% 90% 6% ..
2	C	5	 20% 60% 40%
3	B	8	 62% 38%

The following table lists non-polymeric compounds, carbohydrate monomers and non-standard

residues in protein, DNA, RNA chains that are outliers for geometric or electron-density-fit criteria:

Mol	Type	Chain	Res	Chirality	Geometry	Clashes	Electron density
3	CFZ	B	5	-	-	-	X
3	CFZ	B	6	-	-	-	X

## 2 Entry composition i

There are 7 unique types of molecules in this entry. The entry contains 3067 atoms, of which 0 are hydrogens and 0 are deuteriums.

In the tables below, the ZeroOcc column contains the number of atoms modelled with zero occupancy, the AltConf column contains the number of residues with at least one atom in alternate conformation and the Trace column contains the number of residues modelled with at most 2 atoms.

- Molecule 1 is a protein called UDP-N-acetylmuramoylpentapeptide-lysine N(6)-alanyltransferase.

Mol	Chain	Residues	Atoms					ZeroOcc	AltConf	Trace
			Total	C	N	O	S			
1	A	332	2676	1703	440	520	13	0	2	0

There are 7 discrepancies between the modelled and reference sequences:

Chain	Residue	Modelled	Actual	Comment	Reference
A	336	GLY	-	expression tag	UNP Q9EY50
A	337	HIS	-	expression tag	UNP Q9EY50
A	338	HIS	-	expression tag	UNP Q9EY50
A	339	HIS	-	expression tag	UNP Q9EY50
A	340	HIS	-	expression tag	UNP Q9EY50
A	341	HIS	-	expression tag	UNP Q9EY50
A	342	HIS	-	expression tag	UNP Q9EY50

- Molecule 2 is a protein called UDP-MurNAc-pentapeptide.

Mol	Chain	Residues	Atoms					ZeroOcc	AltConf	Trace
			Total	C	N	O	S			
2	C	5	31	17	5	8	1	0	0	0

- Molecule 3 is a DNA chain called 2'F-RNA (5'-D(\*(GF2)P\*(GF2)P\*(CFZ)P\*(CFZ)P\*(AF2)P\*(CFZ)P\*(CFZ))-R(P\*(A9Z))-3').

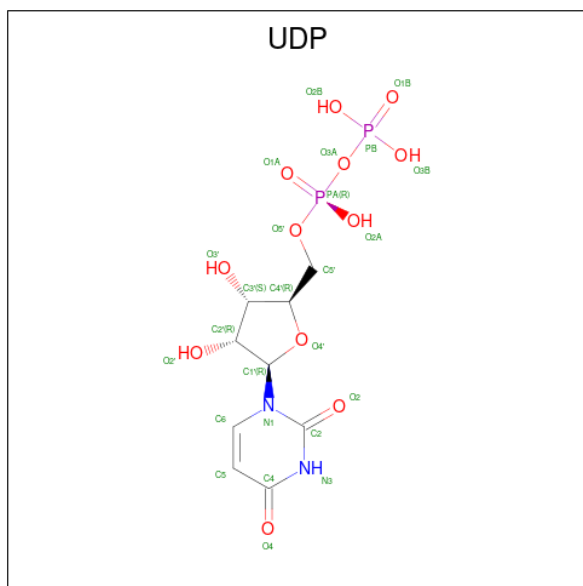
Mol	Chain	Residues	Atoms						ZeroOcc	AltConf	Trace
			Total	C	F	N	O	P			
3	B	8	177	80	7	35	47	8	0	0	0

- Molecule 4 is GLYCEROL (three-letter code: GOL) (formula: C<sub>3</sub>H<sub>8</sub>O<sub>3</sub>).



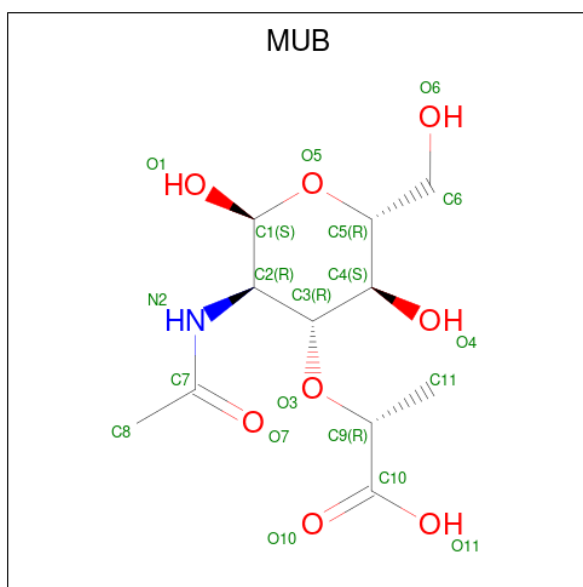
Mol	Chain	Residues	Atoms			ZeroOcc	AltConf
4	A	1	Total	C	O	0	0
			6	3	3		

- Molecule 5 is URIDINE-5'-DIPHOSPHATE (three-letter code: UDP) (formula:  $C_9H_{14}N_2O_{12}P_2$ ) (labeled as "Ligand of Interest" by depositor).



Mol	Chain	Residues	Atoms					ZeroOcc	AltConf
5	A	1	Total	C	N	O	P	0	0
			24	9	2	11	2		

- Molecule 6 is N-acetyl-alpha-muramic acid (three-letter code: MUB) (formula:  $C_{11}H_{19}NO_8$ ) (labeled as "Ligand of Interest" by depositor).



Mol	Chain	Residues	Atoms				ZeroOcc	AltConf
			Total	C	N	O		
6	C	1	19	11	1	7	0	0

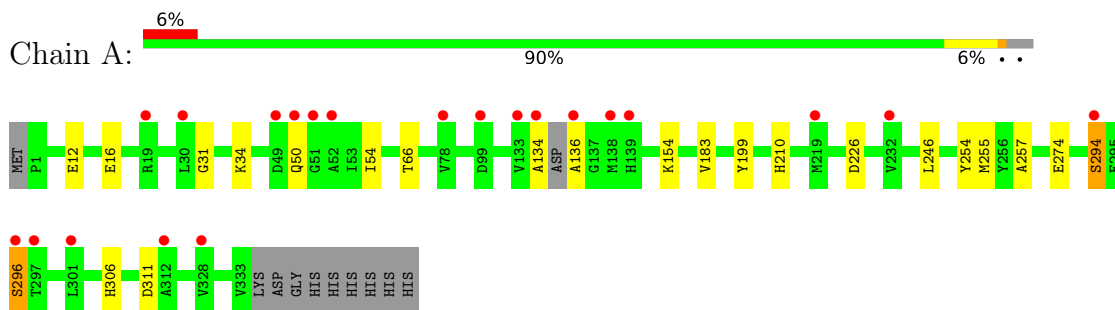
- Molecule 7 is water.

Mol	Chain	Residues	Atoms		ZeroOcc	AltConf
7	A	130	Total	O	0	0
			130	130		
7	C	1	Total	O	0	0
			1	1		
7	B	3	Total	O	0	0
			3	3		

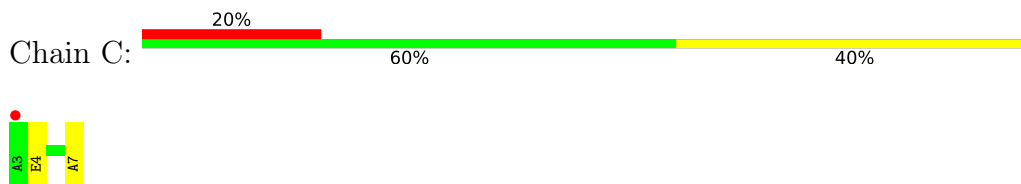
### 3 Residue-property plots [i](#)

These plots are drawn for all protein, RNA, DNA and oligosaccharide chains in the entry. The first graphic for a chain summarises the proportions of the various outlier classes displayed in the second graphic. The second graphic shows the sequence view annotated by issues in geometry and electron density. Residues are color-coded according to the number of geometric quality criteria for which they contain at least one outlier: green = 0, yellow = 1, orange = 2 and red = 3 or more. A red dot above a residue indicates a poor fit to the electron density ( $RSRZ > 2$ ). Stretches of 2 or more consecutive residues without any outlier are shown as a green connector. Residues present in the sample, but not in the model, are shown in grey.

- Molecule 1: UDP-N-acetylmuramoylpentapeptide-lysine N(6)-alanyltransferase



- Molecule 2: UDP-MurNAc-pentapeptide



- Molecule 3: 2'F-RNA (5'-D\*(GF2)P\*(GF2)P\*(CFZ)P\*(CFZ)P\*(AF2)P\*(CFZ)P\*(CFZ))-R(P\*(A9Z))-3')



## 4 Data and refinement statistics

Property	Value	Source
Space group	P 1 21 1	Depositor
Cell constants a, b, c, $\alpha$ , $\beta$ , $\gamma$	41.90Å 100.88Å 44.29Å 90.00° 110.65° 90.00°	Depositor
Resolution (Å)	41.44 – 1.66 41.44 – 1.66	Depositor EDS
% Data completeness (in resolution range)	99.3 (41.44-1.66) 99.2 (41.44-1.66)	Depositor EDS
$R_{merge}$	(Not available)	Depositor
$R_{sym}$	(Not available)	Depositor
$\langle I/\sigma(I) \rangle$ <sup>1</sup>	1.14 (at 1.66Å)	Xtriage
Refinement program	PHENIX 1.20_4459	Depositor
R, $R_{free}$	0.198 , 0.230 0.199 , 0.230	Depositor DCC
$R_{free}$ test set	2021 reflections (5.00%)	wwPDB-VP
Wilson B-factor (Å <sup>2</sup> )	23.0	Xtriage
Anisotropy	0.572	Xtriage
Bulk solvent $k_{sol}$ (e/Å <sup>3</sup> ), $B_{sol}$ (Å <sup>2</sup> )	(Not available) , (Not available)	EDS
L-test for twinning <sup>2</sup>	$\langle  L  \rangle = 0.49$ , $\langle L^2 \rangle = 0.32$	Xtriage
Estimated twinning fraction	No twinning to report.	Xtriage
$F_o, F_c$ correlation	0.96	EDS
Total number of atoms	3067	wwPDB-VP
Average B, all atoms (Å <sup>2</sup> )	30.0	wwPDB-VP

Xtriage's analysis on translational NCS is as follows: *The largest off-origin peak in the Patterson function is 8.38% of the height of the origin peak. No significant pseudotranslation is detected.*

<sup>1</sup>Intensities estimated from amplitudes.

<sup>2</sup>Theoretical values of  $\langle |L| \rangle$ ,  $\langle L^2 \rangle$  for acentric reflections are 0.5, 0.333 respectively for untwinned datasets, and 0.375, 0.2 for perfectly twinned datasets.



## 5 Model quality

### 5.1 Standard geometry

Bond lengths and bond angles in the following residue types are not validated in this section: UDP, MUB, AF2, GF2, CFZ, DAL, FGA, A9Z, GOL

The Z score for a bond length (or angle) is the number of standard deviations the observed value is removed from the expected value. A bond length (or angle) with  $|Z| > 5$  is considered an outlier worth inspection. RMSZ is the root-mean-square of all Z scores of the bond lengths (or angles).

Mol	Chain	Bond lengths		Bond angles	
		RMSZ	# Z  >5	RMSZ	# Z  >5
1	A	0.43	0/2743	0.65	0/3720
2	C	0.39	0/9	1.16	0/9
All	All	0.43	0/2752	0.65	0/3729

There are no bond length outliers.

There are no bond angle outliers.

There are no chirality outliers.

There are no planarity outliers.

### 5.2 Too-close contacts

In the following table, the Non-H and H(model) columns list the number of non-hydrogen atoms and hydrogen atoms in the chain respectively. The H(added) column lists the number of hydrogen atoms added and optimized by MolProbity. The Clashes column lists the number of clashes within the asymmetric unit, whereas Symm-Clashes lists symmetry-related clashes.

Mol	Chain	Non-H	H(model)	H(added)	Clashes	Symm-Clashes
1	A	2676	0	2595	15	0
2	C	31	0	22	0	0
3	B	177	0	88	4	0
4	A	6	0	8	0	0
5	A	24	0	11	0	0
6	C	19	0	17	0	0
7	A	130	0	0	1	0
7	B	3	0	0	0	0
7	C	1	0	0	0	0
All	All	3067	0	2741	17	0

The all-atom clashscore is defined as the number of clashes found per 1000 atoms (including

hydrogen atoms). The all-atom clashscore for this structure is 3.

All (17) close contacts within the same asymmetric unit are listed below, sorted by their clash magnitude.

Atom-1	Atom-2	Interatomic distance (Å)	Clash overlap (Å)
1:A:12:GLU:O	1:A:16:GLU:HG3	1.93	0.69
1:A:134:ALA:HA	1:A:136:ALA:N	2.08	0.68
1:A:246:LEU:HD13	1:A:255[B]:MET:SD	2.38	0.64
3:B:8:CFZ:H6	3:B:8:CFZ:H5'	1.81	0.62
1:A:306:HIS:HD2	3:B:1:GF2:H5'	1.65	0.61
1:A:31:GLY:HA2	1:A:34:LYS:HD2	1.85	0.57
1:A:294:SER:OG	1:A:296:SER:HB3	2.09	0.52
1:A:66:THR:O	7:A:501:HOH:O	2.19	0.52
1:A:306:HIS:CD2	3:B:1:GF2:H5'	2.48	0.47
3:B:7:AF2:H5'	3:B:7:AF2:H8	1.97	0.46
1:A:50:GLN:HG2	1:A:50:GLN:O	2.18	0.44
1:A:199:TYR:CE2	1:A:210:HIS:HB2	2.52	0.44
1:A:54:ILE:O	1:A:54:ILE:HG12	2.18	0.43
1:A:134:ALA:CA	1:A:136:ALA:N	2.78	0.43
1:A:254:TYR:HE1	1:A:257:ALA:HB2	1.83	0.42
1:A:154:LYS:NZ	1:A:311:ASP:OD2	2.41	0.42
1:A:183:VAL:HB	1:A:274:GLU:HG3	2.04	0.40

There are no symmetry-related clashes.

## 5.3 Torsion angles [i](#)

### 5.3.1 Protein backbone [i](#)

In the following table, the Percentiles column shows the percent Ramachandran outliers of the chain as a percentile score with respect to all X-ray entries followed by that with respect to entries of similar resolution.

The Analysed column shows the number of residues for which the backbone conformation was analysed, and the total number of residues.

Mol	Chain	Analysed	Favoured	Allowed	Outliers	Percentiles
1	A	330/343 (96%)	325 (98%)	5 (2%)	0	<b>100</b> <b>100</b>

There are no Ramachandran outliers to report.

### 5.3.2 Protein sidechains [i](#)

In the following table, the Percentiles column shows the percent sidechain outliers of the chain as a percentile score with respect to all X-ray entries followed by that with respect to entries of similar resolution.

The Analysed column shows the number of residues for which the sidechain conformation was analysed, and the total number of residues.

Mol	Chain	Analysed	Rotameric	Outliers	Percentiles	
1	A	287/295 (97%)	284 (99%)	3 (1%)	76	62
2	C	1/1 (100%)	1 (100%)	0	100	100
All	All	288/296 (97%)	285 (99%)	3 (1%)	76	62

All (3) residues with a non-rotameric sidechain are listed below:

Mol	Chain	Res	Type
1	A	226	ASP
1	A	294	SER
1	A	296	SER

Sometimes sidechains can be flipped to improve hydrogen bonding and reduce clashes. There are no such sidechains identified.

### 5.3.3 RNA [i](#)

There are no RNA molecules in this entry.

## 5.4 Non-standard residues in protein, DNA, RNA chains [i](#)

11 non-standard protein/DNA/RNA residues are modelled in this entry.

In the following table, the Counts columns list the number of bonds (or angles) for which Mogul statistics could be retrieved, the number of bonds (or angles) that are observed in the model and the number of bonds (or angles) that are defined in the Chemical Component Dictionary. The Link column lists molecule types, if any, to which the group is linked. The Z score for a bond length (or angle) is the number of standard deviations the observed value is removed from the expected value. A bond length (or angle) with  $|Z| > 2$  is considered an outlier worth inspection. RMSZ is the root-mean-square of all Z scores of the bond lengths (or angles).

Mol	Type	Chain	Res	Link	Bond lengths			Bond angles		
					Counts	RMSZ	# Z  > 2	Counts	RMSZ	# Z  > 2
3	A9Z	B	10	3,2	24,31,32	0.77	0	19,45,48	1.26	2 (10%)

Mol	Type	Chain	Res	Link	Bond lengths			Bond angles		
					Counts	RMSZ	# Z  > 2	Counts	RMSZ	# Z  > 2
3	CFZ	B	6	3	18,21,22	0.98	0	26,30,33	1.22	1 (3%)
3	CFZ	B	8	3	18,21,22	0.96	0	26,30,33	1.14	1 (3%)
3	GF2	B	2	3	18,25,26	1.05	1 (5%)	19,37,40	1.45	5 (26%)
2	FGA	C	4	2	7,8,9	2.38	3 (42%)	7,9,11	1.88	4 (57%)
3	AF2	B	7	3	18,24,25	1.16	1 (5%)	18,35,38	1.56	4 (22%)
3	CFZ	B	9	3	18,21,22	0.95	1 (5%)	26,30,33	1.03	1 (3%)
3	GF2	B	1	3	22,26,26	1.04	1 (4%)	26,40,40	1.21	3 (11%)
2	DAL	C	7	2	5,5,5	1.07	0	6,6,6	1.42	1 (16%)
2	DAL	C	6	2	3,4,5	0.56	0	2,4,6	0.84	0
3	CFZ	B	5	3	18,21,22	0.89	0	26,30,33	1.16	2 (7%)

In the following table, the Chirals column lists the number of chiral outliers, the number of chiral centers analysed, the number of these observed in the model and the number defined in the Chemical Component Dictionary. Similar counts are reported in the Torsion and Rings columns. '-' means no outliers of that kind were identified.

Mol	Type	Chain	Res	Link	Chirals	Torsions	Rings
3	A9Z	B	10	3,2	-	0/5/31/32	0/4/4/4
3	CFZ	B	6	3	-	0/7/25/26	0/2/2/2
3	CFZ	B	8	3	-	2/7/25/26	0/2/2/2
3	GF2	B	2	3	-	0/3/25/26	0/3/3/3
2	FGA	C	4	2	-	0/7/8/9	-
3	AF2	B	7	3	-	3/3/25/26	0/3/3/3
3	CFZ	B	9	3	-	0/7/25/26	0/2/2/2
3	GF2	B	1	3	-	4/6/26/26	0/3/3/3
2	DAL	C	7	2	-	2/4/4/4	-
2	DAL	C	6	2	-	0/0/2/4	-
3	CFZ	B	5	3	-	3/7/25/26	0/2/2/2

All (7) bond length outliers are listed below:

Mol	Chain	Res	Type	Atoms	Z	Observed(Å)	Ideal(Å)
2	C	4	FGA	O-C	4.68	1.36	1.22
3	B	7	AF2	C5-C4	2.72	1.48	1.40
2	C	4	FGA	CB-CA	2.66	1.58	1.53
2	C	4	FGA	OE1-CD	2.55	1.34	1.19
3	B	2	GF2	C6-N1	-2.36	1.34	1.37
3	B	1	GF2	C6-N1	-2.18	1.34	1.37
3	B	9	CFZ	C6-C5	2.05	1.39	1.35

All (24) bond angle outliers are listed below:

Mol	Chain	Res	Type	Atoms	Z	Observed(°)	Ideal(°)
3	B	6	CFZ	C2'-C1'-N1	-4.24	107.71	114.20
3	B	10	A9Z	C5T-N1T-C2'	3.45	128.54	125.48
3	B	9	CFZ	C2'-C1'-N1	-3.31	109.15	114.20
3	B	7	AF2	N3-C2-N1	-3.23	123.63	128.68
3	B	7	AF2	C2'-C3'-C4'	3.15	106.48	102.40
2	C	4	FGA	CB-CG-CD	2.94	120.66	112.29
3	B	5	CFZ	C2'-C1'-N1	-2.94	109.71	114.20
3	B	1	GF2	C2'-C3'-C4'	2.56	105.70	102.40
2	C	7	DAL	OXT-C-O	-2.53	118.34	124.09
3	B	2	GF2	C2'-C3'-C4'	2.39	105.49	102.40
3	B	8	CFZ	C5'-C4'-C3'	-2.37	106.30	115.18
3	B	7	AF2	C5'-C4'-C3'	-2.36	106.33	115.18
3	B	10	A9Z	C5-C6-N6	2.33	123.89	120.35
2	C	4	FGA	OXT-C-O	-2.33	118.80	124.09
2	C	4	FGA	OXT-C-CA	2.33	121.32	113.38
3	B	2	GF2	C5-C6-N1	2.28	117.98	113.95
3	B	2	GF2	C3'-C2'-C1'	2.27	105.88	103.13
3	B	2	GF2	C8-N7-C5	2.27	107.31	102.99
3	B	7	AF2	C4-C5-N7	-2.25	107.06	109.40
3	B	5	CFZ	C2'-C3'-C4'	2.25	105.31	102.40
2	C	4	FGA	CB-CA-C	-2.18	105.10	110.30
3	B	1	GF2	C5-C6-N1	2.16	117.77	113.95
3	B	1	GF2	C8-N7-C5	2.13	107.04	102.99
3	B	2	GF2	O4'-C1'-C2'	2.05	107.91	105.79

There are no chirality outliers.

All (14) torsion outliers are listed below:

Mol	Chain	Res	Type	Atoms
3	B	1	GF2	C5'-O5'-P-OP2
3	B	1	GF2	C5'-O5'-P-OP3
3	B	8	CFZ	C3'-C4'-C5'-O5'
3	B	5	CFZ	C4'-C5'-O5'-P
3	B	7	AF2	C3'-C4'-C5'-O5'
3	B	8	CFZ	O4'-C4'-C5'-O5'
3	B	7	AF2	O4'-C4'-C5'-O5'
3	B	1	GF2	C5'-O5'-P-OP1
3	B	5	CFZ	C3'-C4'-C5'-O5'
2	C	7	DAL	OXT-C-CA-N
2	C	7	DAL	O-C-CA-N
3	B	5	CFZ	O4'-C4'-C5'-O5'

*Continued on next page...*

Continued from previous page...

Mol	Chain	Res	Type	Atoms
3	B	7	AF2	C4'-C5'-O5'-P
3	B	1	GF2	O4'-C4'-C5'-O5'

There are no ring outliers.

3 monomers are involved in 4 short contacts:

Mol	Chain	Res	Type	Clashes	Symm-Clashes
3	B	8	CFZ	1	0
3	B	7	AF2	1	0
3	B	1	GF2	2	0

## 5.5 Carbohydrates [i](#)

There are no monosaccharides in this entry.

## 5.6 Ligand geometry [i](#)

3 ligands are modelled in this entry.

In the following table, the Counts columns list the number of bonds (or angles) for which Mogul statistics could be retrieved, the number of bonds (or angles) that are observed in the model and the number of bonds (or angles) that are defined in the Chemical Component Dictionary. The Link column lists molecule types, if any, to which the group is linked. The Z score for a bond length (or angle) is the number of standard deviations the observed value is removed from the expected value. A bond length (or angle) with  $|Z| > 2$  is considered an outlier worth inspection. RMSZ is the root-mean-square of all Z scores of the bond lengths (or angles).

Mol	Type	Chain	Res	Link	Bond lengths			Bond angles		
					Counts	RMSZ	# Z  > 2	Counts	RMSZ	# Z  > 2
6	MUB	C	101	5,2	18,19,20	0.43	0	21,26,28	0.67	0
5	UDP	A	402	6	21,25,26	0.31	0	31,37,40	0.46	0
4	GOL	A	401	-	5,5,5	0.90	0	5,5,5	0.96	0

In the following table, the Chirals column lists the number of chiral outliers, the number of chiral centers analysed, the number of these observed in the model and the number defined in the Chemical Component Dictionary. Similar counts are reported in the Torsion and Rings columns. '2' means no outliers of that kind were identified.

Mol	Type	Chain	Res	Link	Chirals	Torsions	Rings
6	MUB	C	101	5,2	-	1/10/32/34	0/1/1/1
5	UDP	A	402	6	-	1/13/31/32	0/2/2/2

Continued on next page...

*Continued from previous page...*

Mol	Type	Chain	Res	Link	Chirals	Torsions	Rings
4	GOL	A	401	-	-	1/4/4/4	-

There are no bond length outliers.

There are no bond angle outliers.

There are no chirality outliers.

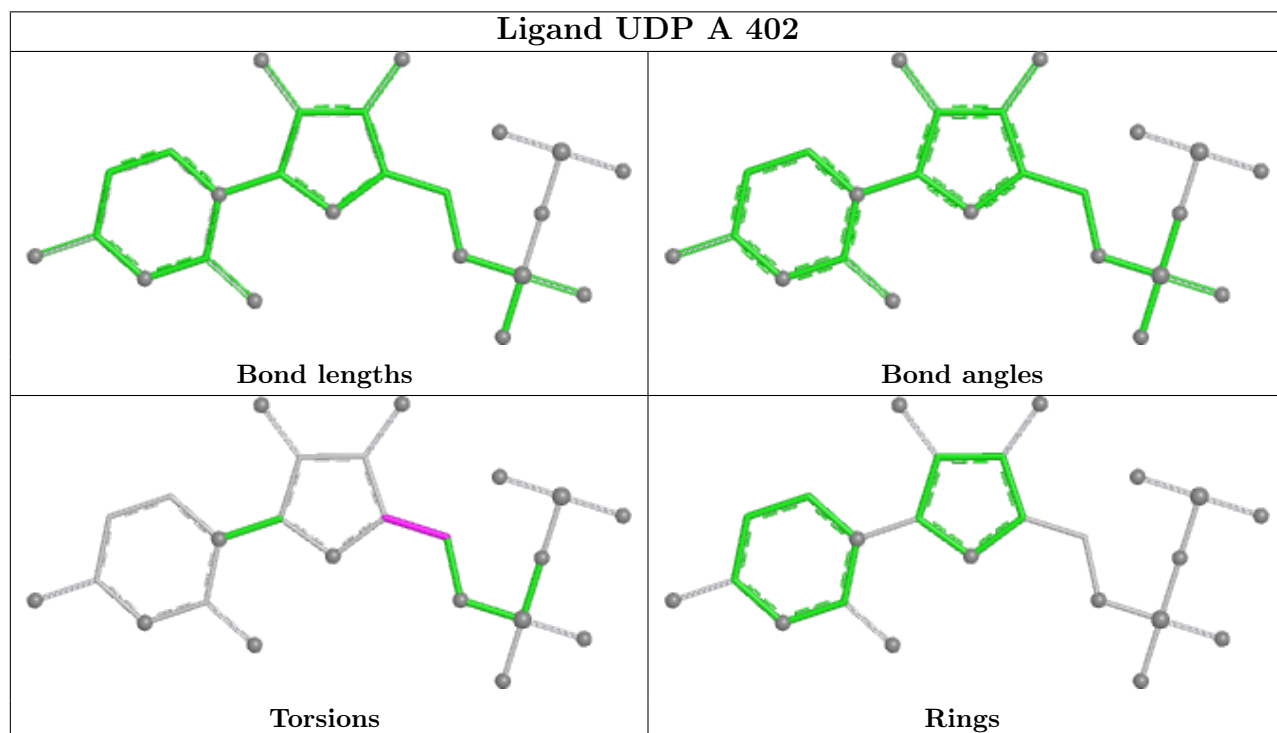
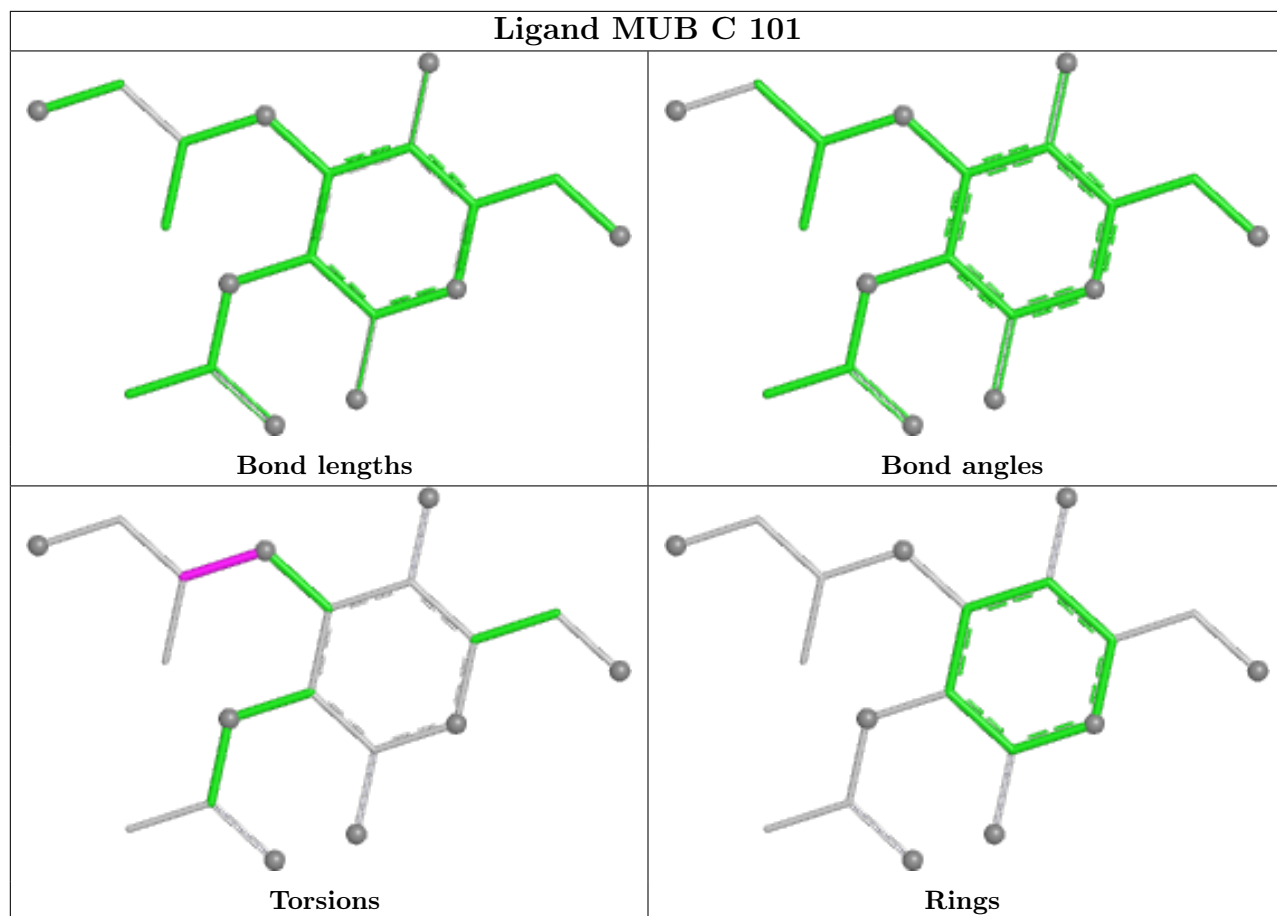
All (3) torsion outliers are listed below:

Mol	Chain	Res	Type	Atoms
4	A	401	GOL	O1-C1-C2-C3
6	C	101	MUB	C11-C9-O3-C3
5	A	402	UDP	O4'-C4'-C5'-O5'

There are no ring outliers.

No monomer is involved in short contacts.

The following is a two-dimensional graphical depiction of Mogul quality analysis of bond lengths, bond angles, torsion angles, and ring geometry for all instances of the Ligand of Interest. In addition, ligands with molecular weight > 250 and outliers as shown on the validation Tables will also be included. For torsion angles, if less than 5% of the Mogul distribution of torsion angles is within 10 degrees of the torsion angle in question, then that torsion angle is considered an outlier. Any bond that is central to one or more torsion angles identified as an outlier by Mogul will be highlighted in the graph. For rings, the root-mean-square deviation (RMSD) between the ring in question and similar rings identified by Mogul is calculated over all ring torsion angles. If the average RMSD is greater than 60 degrees and the minimal RMSD between the ring in question and any Mogul-identified rings is also greater than 60 degrees, then that ring is considered an outlier. The outliers are highlighted in purple. The color gray indicates Mogul did not find sufficient equivalents in the CSD to analyse the geometry.





## 5.7 Other polymers [i](#)

There are no such residues in this entry.

## 5.8 Polymer linkage issues [i](#)

The following chains have linkage breaks:

Mol	Chain	Number of breaks
3	B	1

All chain breaks are listed below:

Model	Chain	Residue-1	Atom-1	Residue-2	Atom-2	Distance (Å)
1	B	2:GF2	O3'	5:CFZ	P	17.40

## 6 Fit of model and data

### 6.1 Protein, DNA and RNA chains

In the following table, the column labelled ‘#RSRZ > 2’ contains the number (and percentage) of RSRZ outliers, followed by percent RSRZ outliers for the chain as percentile scores relative to all X-ray entries and entries of similar resolution. The OWAB column contains the minimum, median, 95<sup>th</sup> percentile and maximum values of the occupancy-weighted average B-factor per residue. The column labelled ‘Q < 0.9’ lists the number of (and percentage) of residues with an average occupancy less than 0.9.

Mol	Chain	Analysed	<RSRZ>	#RSRZ>2	OWAB(Å <sup>2</sup> )	Q<0.9
1	A	332/343 (96%)	0.90	21 (6%) 20 19	19, 26, 44, 64	0
2	C	2/5 (40%)	2.11	1 (50%) 0 0	37, 37, 37, 39	0
3	B	0/8	-	-	-	-
All	All	334/356 (93%)	0.91	22 (6%) 18 17	19, 26, 44, 64	0

All (22) RSRZ outliers are listed below:

Mol	Chain	Res	Type	RSRZ
1	A	134	ALA	7.7
1	A	49	ASP	6.5
1	A	136	ALA	5.6
1	A	133	VAL	5.1
1	A	297	THR	4.9
1	A	50	GLN	4.5
1	A	138	MET	3.9
1	A	296	SER	3.2
1	A	312	ALA	3.0
2	C	3	ALA	2.9
1	A	19	ARG	2.8
1	A	294	SER	2.5
1	A	232	VAL	2.4
1	A	301	LEU	2.3
1	A	78	VAL	2.3
1	A	139	HIS	2.2
1	A	328	VAL	2.2
1	A	30	LEU	2.2
1	A	51	GLY	2.2
1	A	99	ASP	2.2
1	A	219	MET	2.1
1	A	52	ALA	2.1

## 6.2 Non-standard residues in protein, DNA, RNA chains [i](#)

In the following table, the Atoms column lists the number of modelled atoms in the group and the number defined in the chemical component dictionary. The B-factors column lists the minimum, median, 95<sup>th</sup> percentile and maximum values of B factors of atoms in the group. The column labelled 'Q< 0.9' lists the number of atoms with occupancy less than 0.9.

Mol	Type	Chain	Res	Atoms	RSCC	RSR	B-factors(Å <sup>2</sup> )	Q<0.9
3	CFZ	B	6	20/21	0.40	0.48	64,79,88,91	0
3	CFZ	B	5	20/21	0.45	0.47	72,83,93,106	0
3	GF2	B	1	24/24	0.49	0.39	65,72,86,98	0
2	FGA	C	4	9/10	0.56	0.20	39,43,48,49	0
3	AF2	B	7	22/23	0.58	0.37	52,70,83,94	0
3	GF2	B	2	23/24	0.61	0.32	69,74,84,85	0
3	CFZ	B	8	20/21	0.69	0.32	48,58,69,77	0
3	A9Z	B	10	28/29	0.70	0.23	31,47,59,61	0
3	CFZ	B	9	20/21	0.74	0.26	42,49,57,62	0
2	DAL	C	6	5/6	0.84	0.12	25,25,28,29	0
2	DAL	C	7	6/6	0.90	0.11	25,25,28,29	0

## 6.3 Carbohydrates [i](#)

There are no monosaccharides in this entry.

## 6.4 Ligands [i](#)

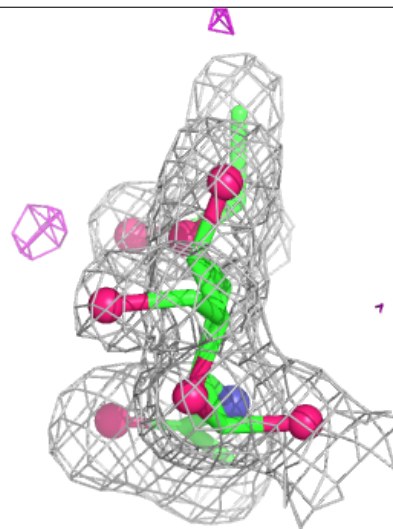
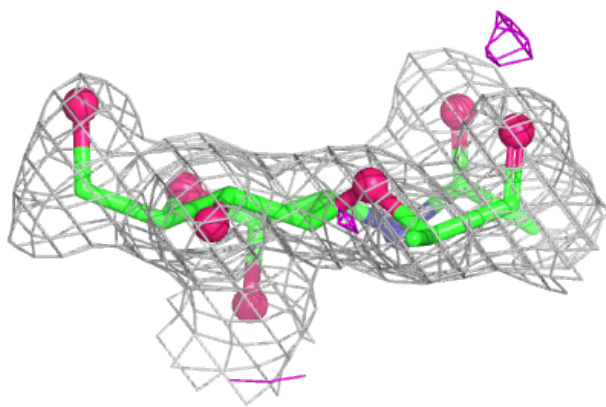
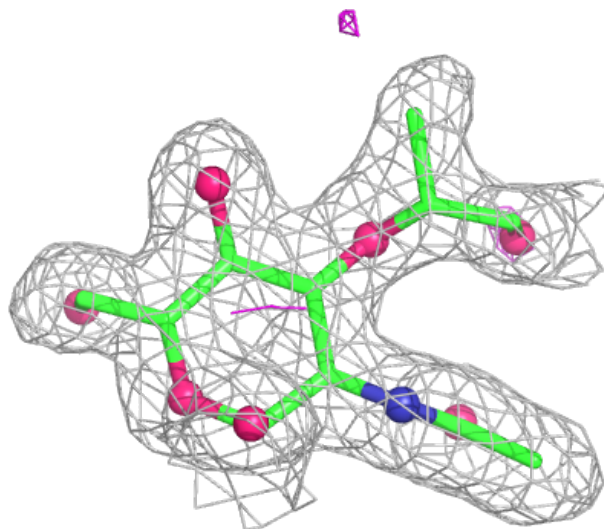
In the following table, the Atoms column lists the number of modelled atoms in the group and the number defined in the chemical component dictionary. The B-factors column lists the minimum, median, 95<sup>th</sup> percentile and maximum values of B factors of atoms in the group. The column labelled 'Q< 0.9' lists the number of atoms with occupancy less than 0.9.

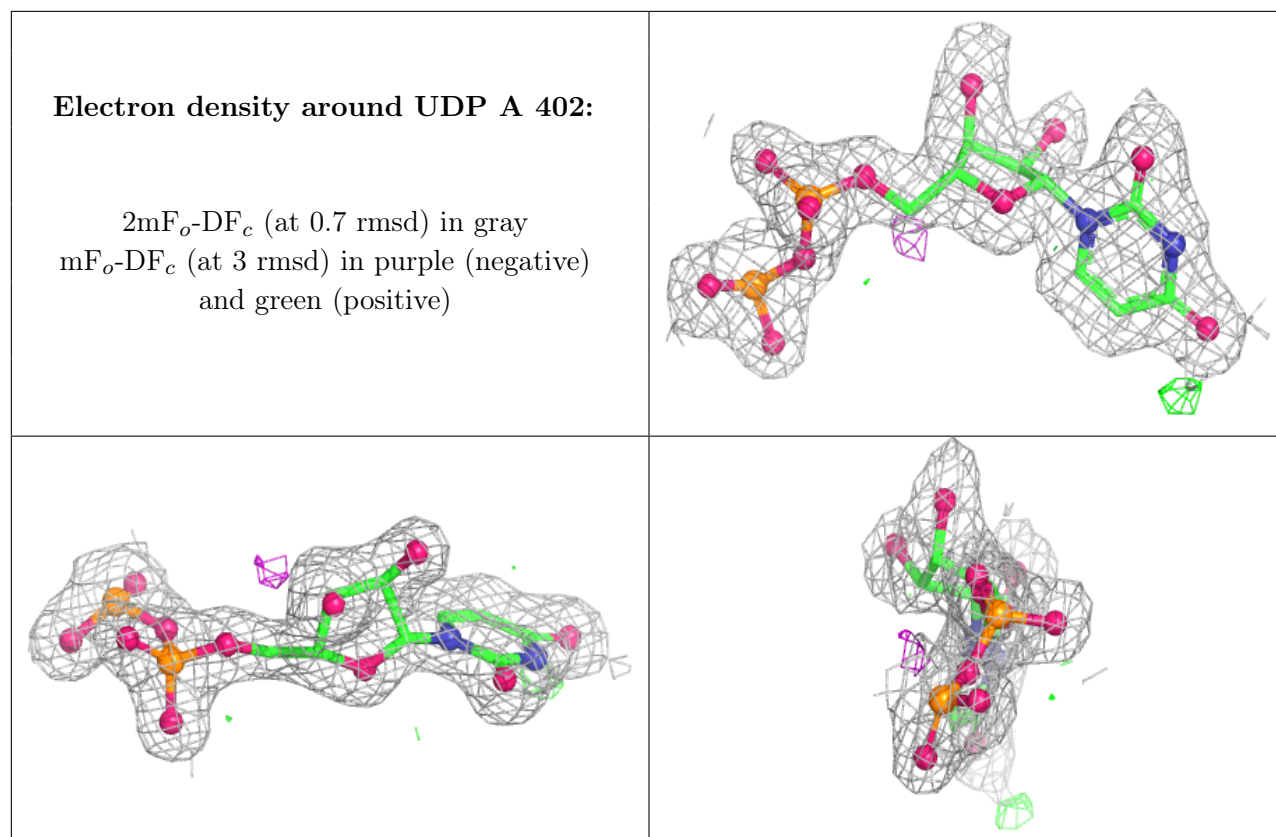
Mol	Type	Chain	Res	Atoms	RSCC	RSR	B-factors(Å <sup>2</sup> )	Q<0.9
6	MUB	C	101	19/20	0.88	0.13	24,28,35,37	0
4	GOL	A	401	6/6	0.91	0.14	19,25,27,27	0
5	UDP	A	402	24/25	0.94	0.12	21,24,32,35	0

The following is a graphical depiction of the model fit to experimental electron density of all instances of the Ligand of Interest. In addition, ligands with molecular weight > 250 and outliers as shown on the geometry validation Tables will also be included. Each fit is shown from different orientation to approximate a three-dimensional view.

**Electron density around MUB C 101:**

$2mF_o-DF_c$  (at 0.7 rmsd) in gray  
 $mF_o-DF_c$  (at 3 rmsd) in purple (negative)  
and green (positive)





## 6.5 Other polymers [i](#)

There are no such residues in this entry.