



Full wwPDB X-ray Structure Validation Report ⓘ

Nov 14, 2023 – 03:58 AM JST

PDB ID : 7YD8

Title : TR-SFX MmCPDII-DNA complex: 2 ns snapshot. Includes 2 ns, dark, and extrapolated structure factors

Authors : Maestre-Reyna, M.; Wang, P.-H.; Nango, E.; Hosokawa, Y.; Saft, M.; Furrer, A.; Yang, C.-H.; Ngura Putu, E.P.G.; Wu, W.-J.; Emmerich, H.-J.; Engilberge, S.; Caramello, N.; Wranik, M.; Glover, H.L.; Franz-Badur, S.; Wu, H.-Y.; Lee, C.-C.; Huang, W.-C.; Huang, K.-F.; Chang, Y.-K.; Liao, J.-H.; Weng, J.-H.; Gad, W.; Chang, C.-W.; Pang, A.H.; Gashi, D.; Beale, E.; Ozerov, D.; Milne, C.; Cirelli, C.; Bacellar, C.; Sugahara, M.; Owada, S.; Joti, Y.; Yamashita, A.; Tanaka, R.; Tanaka, T.; Luo, F.J.; Tono, K.; Kiontke, S.; Spadaccini, R.; Royant, A.; Yamamoto, J.; Iwata, S.; Standfuss, J.; Essen, L.-O.; Bessho, Y.; Tsai, M.-D.

Deposited on : 2022-07-04

Resolution : 2.15 Å(reported)

This is a Full wwPDB X-ray Structure Validation Report for a publicly released PDB entry.

We welcome your comments at validation@mail.wwpdb.org

A user guide is available at

<https://www.wwpdb.org/validation/2017/XrayValidationReportHelp>

with specific help available everywhere you see the ⓘ symbol.

The types of validation reports are described at

<http://www.wwpdb.org/validation/2017/FAQs#types>.

The following versions of software and data (see [references ⓘ](#)) were used in the production of this report:

MolProbity : 4.02b-467
Mogul : 1.8.5 (274361), CSD as541be (2020)
Xtriage (Phenix) : 1.13

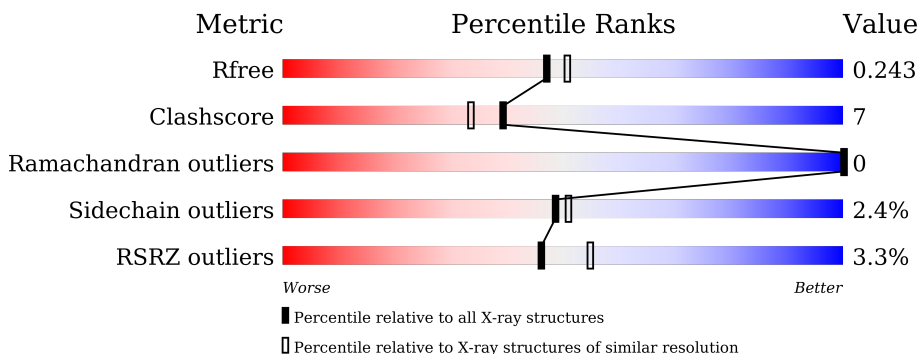
1 Overall quality at a glance

The following experimental techniques were used to determine the structure:

X-RAY DIFFRACTION

The reported resolution of this entry is 2.15 Å.

Percentile scores (ranging between 0-100) for global validation metrics of the entry are shown in the following graphic. The table shows the number of entries on which the scores are based.



Metric	Whole archive (#Entries)	Similar resolution (#Entries, resolution range(Å))
R_{free}	130704	1479 (2.16-2.16)
Clashscore	141614	1585 (2.16-2.16)
Ramachandran outliers	138981	1560 (2.16-2.16)
Sidechain outliers	138945	1559 (2.16-2.16)
RSRZ outliers	127900	1456 (2.16-2.16)

The table below summarises the geometric issues observed across the polymeric chains and their fit to the electron density. The red, orange, yellow and green segments of the lower bar indicate the fraction of residues that contain outliers for ≥ 3 , 2, 1 and 0 types of geometric quality criteria respectively. A grey segment represents the fraction of residues that are not modelled. The numeric value for each fraction is indicated below the corresponding segment, with a dot representing fractions $\leq 5\%$. The upper red bar (where present) indicates the fraction of residues that have poor fit to the electron density. The numeric value is given above the bar.

Mol	Chain	Length	Quality of chain
1	A	482	

Continued on next page...

EDS : 2.36
buster-report : 1.1.7 (2018)
Percentile statistics : 20191225.v01 (using entries in the PDB archive December 25th 2019)
Refmac : 5.8.0158
CCP4 : 7.0.044 (Gargrove)
Ideal geometry (proteins) : Engh & Huber (2001)
Ideal geometry (DNA, RNA) : Parkinson et al. (1996)
Validation Pipeline (wwPDB-VP) : 2.36

Continued from previous page...

Mol	Chain	Length	Quality of chain
1	B	482	 3% 72% 17% 10%
2	C	14	 43% 29% 7% 21%
3	D	14	 100%
3	F	14	 50% 43% 7%
4	E	15	 20% 53% 27%

2 Entry composition i

There are 7 unique types of molecules in this entry. The entry contains 8682 atoms, of which 0 are hydrogens and 0 are deuteriums.

In the tables below, the ZeroOcc column contains the number of atoms modelled with zero occupancy, the AltConf column contains the number of residues with at least one atom in alternate conformation and the Trace column contains the number of residues modelled with at most 2 atoms.

- Molecule 1 is a protein called Deoxyribodipyrimidine photolyase.

Mol	Chain	Residues	Atoms					ZeroOcc	AltConf	Trace
			Total	C	N	O	S			
1	A	456	3655	2357	604	680	14	0	7	0
1	B	434	3517	2264	594	644	15	0	10	0

There are 42 discrepancies between the modelled and reference sequences:

Chain	Residue	Modelled	Actual	Comment	Reference
A	-17	MET	-	initiating methionine	UNP A0A0F8I5V2
A	-16	GLY	-	expression tag	UNP A0A0F8I5V2
A	-15	SER	-	expression tag	UNP A0A0F8I5V2
A	-14	SER	-	expression tag	UNP A0A0F8I5V2
A	-13	HIS	-	expression tag	UNP A0A0F8I5V2
A	-12	HIS	-	expression tag	UNP A0A0F8I5V2
A	-11	HIS	-	expression tag	UNP A0A0F8I5V2
A	-10	HIS	-	expression tag	UNP A0A0F8I5V2
A	-9	HIS	-	expression tag	UNP A0A0F8I5V2
A	-8	HIS	-	expression tag	UNP A0A0F8I5V2
A	-7	SER	-	expression tag	UNP A0A0F8I5V2
A	-6	SER	-	expression tag	UNP A0A0F8I5V2
A	-5	GLY	-	expression tag	UNP A0A0F8I5V2
A	-4	LEU	-	expression tag	UNP A0A0F8I5V2
A	-3	VAL	-	expression tag	UNP A0A0F8I5V2
A	-2	PRO	-	expression tag	UNP A0A0F8I5V2
A	-1	ARG	-	expression tag	UNP A0A0F8I5V2
A	0	GLY	-	expression tag	UNP A0A0F8I5V2
A	1	SER	-	expression tag	UNP A0A0F8I5V2
A	2	HIS	-	expression tag	UNP A0A0F8I5V2
A	377	THR	MET	engineered mutation	UNP A0A0F8I5V2
B	-17	MET	-	initiating methionine	UNP A0A0F8I5V2
B	-16	GLY	-	expression tag	UNP A0A0F8I5V2
B	-15	SER	-	expression tag	UNP A0A0F8I5V2
B	-14	SER	-	expression tag	UNP A0A0F8I5V2

Continued on next page...

Continued from previous page...

Chain	Residue	Modelled	Actual	Comment	Reference
B	-13	HIS	-	expression tag	UNP A0A0F8I5V2
B	-12	HIS	-	expression tag	UNP A0A0F8I5V2
B	-11	HIS	-	expression tag	UNP A0A0F8I5V2
B	-10	HIS	-	expression tag	UNP A0A0F8I5V2
B	-9	HIS	-	expression tag	UNP A0A0F8I5V2
B	-8	HIS	-	expression tag	UNP A0A0F8I5V2
B	-7	SER	-	expression tag	UNP A0A0F8I5V2
B	-6	SER	-	expression tag	UNP A0A0F8I5V2
B	-5	GLY	-	expression tag	UNP A0A0F8I5V2
B	-4	LEU	-	expression tag	UNP A0A0F8I5V2
B	-3	VAL	-	expression tag	UNP A0A0F8I5V2
B	-2	PRO	-	expression tag	UNP A0A0F8I5V2
B	-1	ARG	-	expression tag	UNP A0A0F8I5V2
B	0	GLY	-	expression tag	UNP A0A0F8I5V2
B	1	SER	-	expression tag	UNP A0A0F8I5V2
B	2	HIS	-	expression tag	UNP A0A0F8I5V2
B	377	THR	MET	engineered mutation	UNP A0A0F8I5V2

- Molecule 2 is a DNA chain called CPD photolesion containing DNA.

Mol	Chain	Residues	Atoms					ZeroOcc	AltConf	Trace
			Total	C	N	O	P			
2	C	11	244	115	44	73	12	0	0	0

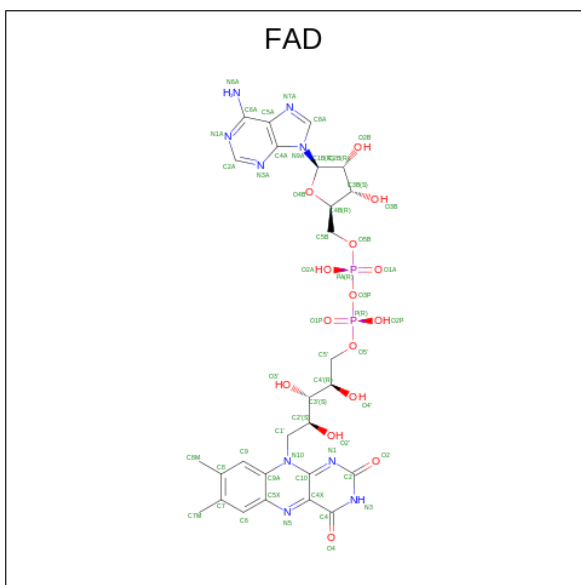
- Molecule 3 is a DNA chain called complementary oligonucleotide to the CPD containing DNA.

Mol	Chain	Residues	Atoms					ZeroOcc	AltConf	Trace
			Total	C	N	O	P			
3	D	14	286	136	56	81	13	0	0	0
3	F	13	266	126	54	74	12	0	0	0

- Molecule 4 is a DNA chain called CPD photolesion containing DNA.

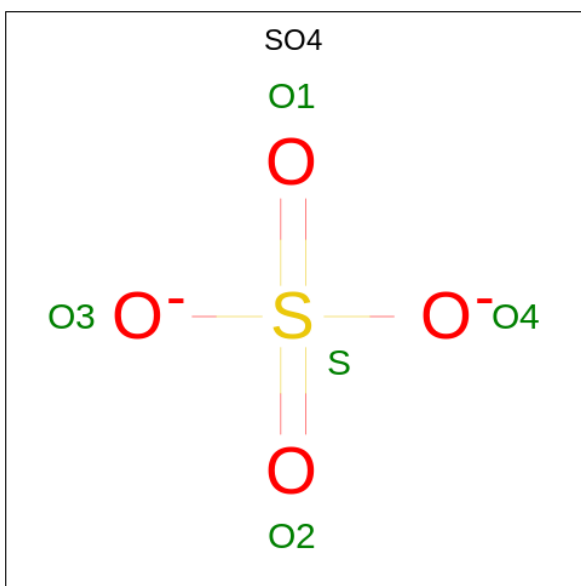
Mol	Chain	Residues	Atoms					ZeroOcc	AltConf	Trace
			Total	C	N	O	P			
4	E	11	225	106	41	67	11	0	0	0

- Molecule 5 is FLAVIN-ADENINE DINUCLEOTIDE (three-letter code: FAD) (formula: C₂₇H₃₃N₉O₁₅P₂) (labeled as "Ligand of Interest" by depositor).



Mol	Chain	Residues	Atoms				ZeroOcc	AltConf	
			Total	C	N	O			P
5	A	1	53	27	9	15	2	0	0
5	B	1	53	27	9	15	2	0	0

- Molecule 6 is SULFATE ION (three-letter code: SO4) (formula: O₄S).



Mol	Chain	Residues	Atoms		ZeroOcc	AltConf
			Total	O S		
6	A	1	5	4 1	0	0

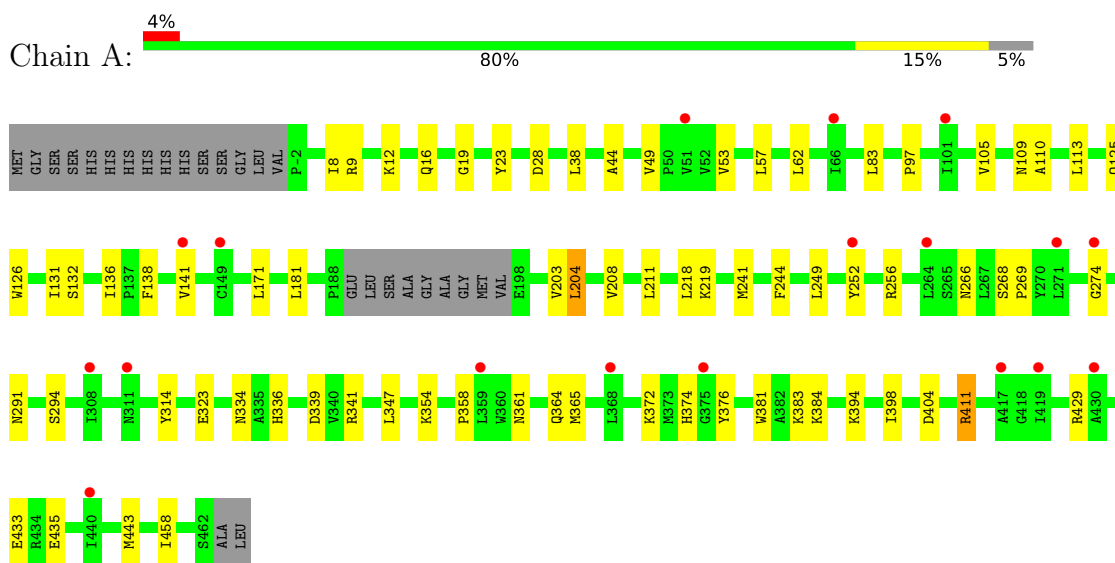
- Molecule 7 is water.

Mol	Chain	Residues	Atoms		ZeroOcc	AltConf
7	A	200	Total 200	O 200	0	0
7	B	141	Total 141	O 141	0	0
7	C	12	Total 12	O 12	0	0
7	D	8	Total 8	O 8	0	0
7	E	9	Total 9	O 9	0	0
7	F	8	Total 8	O 8	0	0

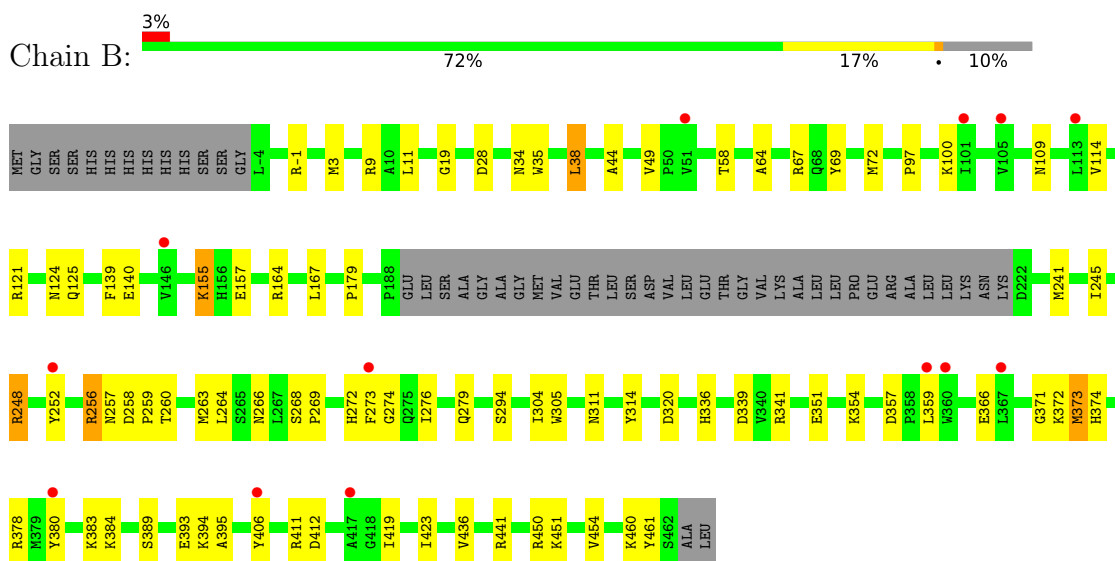
3 Residue-property plots [i](#)

These plots are drawn for all protein, RNA, DNA and oligosaccharide chains in the entry. The first graphic for a chain summarises the proportions of the various outlier classes displayed in the second graphic. The second graphic shows the sequence view annotated by issues in geometry and electron density. Residues are color-coded according to the number of geometric quality criteria for which they contain at least one outlier: green = 0, yellow = 1, orange = 2 and red = 3 or more. A red dot above a residue indicates a poor fit to the electron density ($RSRZ > 2$). Stretches of 2 or more consecutive residues without any outlier are shown as a green connector. Residues present in the sample, but not in the model, are shown in grey.

- Molecule 1: Deoxyribodipyrimidine photolyase

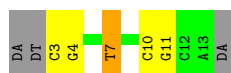


- Molecule 1: Deoxyribodipyrimidine photolyase



- Molecule 2: CPD photolysis containing DNA

Chain C:  43% 29% 7% 21%



- Molecule 3: complementary oligonucleotide to the CPD containing DNA

Chain D:  100%

There are no outlier residues recorded for this chain.

- Molecule 3: complementary oligonucleotide to the CPD containing DNA

Chain F:  50% 43% 7%



- Molecule 4: CPD photolesion containing DNA

Chain E:  20% 53% 27%



4 Data and refinement statistics

Property	Value	Source
Space group	P 21 21 21	Depositor
Cell constants a, b, c, α , β , γ	72.47Å 115.93Å 169.35Å 90.00° 90.00° 90.00°	Depositor
Resolution (Å)	16.78 – 2.15 16.78 – 2.12	Depositor EDS
% Data completeness (in resolution range)	100.0 (16.78-2.15) 99.9 (16.78-2.12)	Depositor EDS
R_{merge}	(Not available)	Depositor
R_{sym}	(Not available)	Depositor
$\langle I/\sigma(I) \rangle$ ¹	0.36 (at 2.12Å)	Xtriage
Refinement program	PHENIX (1.19_4092: ???)	Depositor
R, R_{free}	0.234 , 0.243 0.234 , 0.243	Depositor DCC
R_{free} test set	4016 reflections (4.94%)	wwPDB-VP
Wilson B-factor (Å ²)	21.3	Xtriage
Anisotropy	0.114	Xtriage
Bulk solvent k_{sol} (e/Å ³), B_{sol} (Å ²)	(Not available) , (Not available)	EDS
L-test for twinning ²	$\langle L \rangle = 0.49$, $\langle L^2 \rangle = 0.33$	Xtriage
Estimated twinning fraction	No twinning to report.	Xtriage
F_o, F_c correlation	0.95	EDS
Total number of atoms	8682	wwPDB-VP
Average B, all atoms (Å ²)	25.0	wwPDB-VP

Xtriage's analysis on translational NCS is as follows: *The largest off-origin peak in the Patterson function is 2.84% of the height of the origin peak. No significant pseudotranslation is detected.*

¹Intensities estimated from amplitudes.

²Theoretical values of $\langle |L| \rangle$, $\langle L^2 \rangle$ for acentric reflections are 0.5, 0.333 respectively for untwinned datasets, and 0.375, 0.2 for perfectly twinned datasets.

5 Model quality [i](#)

5.1 Standard geometry [i](#)

Bond lengths and bond angles in the following residue types are not validated in this section: TTD, SO4, FAD

The Z score for a bond length (or angle) is the number of standard deviations the observed value is removed from the expected value. A bond length (or angle) with $|Z| > 5$ is considered an outlier worth inspection. RMSZ is the root-mean-square of all Z scores of the bond lengths (or angles).

Mol	Chain	Bond lengths		Bond angles	
		RMSZ	# $ Z > 5$	RMSZ	# $ Z > 5$
1	A	0.28	1/3777 (0.0%)	0.47	0/5123
1	B	0.25	0/3641	0.47	0/4937
2	C	0.47	0/227	0.70	0/345
3	D	0.48	0/321	0.80	0/494
3	F	0.47	0/299	0.77	0/460
4	E	0.52	0/251	0.92	0/385
All	All	0.31	1/8516 (0.0%)	0.53	0/11744

All (1) bond length outliers are listed below:

Mol	Chain	Res	Type	Atoms	Z	Observed(Å)	Ideal(Å)
1	A	435	GLU	CD-OE1	-5.51	1.19	1.25

There are no bond angle outliers.

There are no chirality outliers.

There are no planarity outliers.

5.2 Too-close contacts [i](#)

In the following table, the Non-H and H(model) columns list the number of non-hydrogen atoms and hydrogen atoms in the chain respectively. The H(added) column lists the number of hydrogen atoms added and optimized by MolProbity. The Clashes column lists the number of clashes within the asymmetric unit, whereas Symm-Clashes lists symmetry-related clashes.

Mol	Chain	Non-H	H(model)	H(added)	Clashes	Symm-Clashes
1	A	3655	0	3485	45	0
1	B	3517	0	3356	60	0
2	C	244	0	135	7	0
3	D	286	0	158	0	0

Continued on next page...

Continued from previous page...

Mol	Chain	Non-H	H(model)	H(added)	Clashes	Symm-Clashes
3	F	266	0	146	4	0
4	E	225	0	124	8	0
5	A	53	0	31	1	0
5	B	53	0	31	0	0
6	A	5	0	0	0	0
7	A	200	0	0	5	0
7	B	141	0	0	5	0
7	C	12	0	0	0	0
7	D	8	0	0	0	0
7	E	9	0	0	0	0
7	F	8	0	0	0	0
All	All	8682	0	7466	116	0

The all-atom clashscore is defined as the number of clashes found per 1000 atoms (including hydrogen atoms). The all-atom clashscore for this structure is 7.

All (116) close contacts within the same asymmetric unit are listed below, sorted by their clash magnitude.

Atom-1	Atom-2	Interatomic distance (Å)	Clash overlap (Å)
2:C:7:TTD:C5	2:C:7:TTD:C5T	2.31	1.08
2:C:7:TTD:C6T	2:C:7:TTD:C6	2.47	0.93
3:F:4:DG:H2''	3:F:5:DC:H5''	1.66	0.76
1:A:411[B]:ARG:NH1	7:A:602:HOH:O	2.18	0.75
1:A:105:VAL:HG13	1:A:110:ALA:HB3	1.72	0.72
1:A:404:ASP:O	7:A:601:HOH:O	2.08	0.70
1:A:341:ARG:H	1:B:125:GLN:HE22	1.41	0.68
2:C:7:TTD:C5T	2:C:7:TTD:C6	2.74	0.66
1:B:167:LEU:HD13	1:B:304:ILE:HD13	1.81	0.63
1:B:336:HIS:ND1	1:B:339:ASP:OD2	2.26	0.63
1:B:351:GLU:OE2	1:B:406:TYR:OH	2.15	0.62
1:A:347:LEU:HD23	1:A:398:ILE:HD12	1.82	0.62
1:B:38:LEU:HD22	1:B:179:PRO:HG2	1.83	0.60
1:B:124[B]:ASN:ND2	7:B:612:HOH:O	2.35	0.60
1:A:9:ARG:NH2	1:A:314:TYR:OH	2.32	0.60
1:B:72:MET:HG3	1:B:273:PHE:HD2	1.68	0.58
1:A:53:VAL:HG21	1:A:83:LEU:HD13	1.85	0.58
1:B:157:GLU:H	1:B:311:ASN:HD21	1.53	0.56
1:A:125:GLN:HE22	1:B:341:ARG:H	1.52	0.56
1:B:258:ASP:OD1	1:B:260:THR:OG1	2.24	0.56
1:B:9:ARG:NH2	1:B:314:TYR:OH	2.40	0.55
1:A:62:LEU:HA	1:A:211:LEU:HD21	1.87	0.55

Continued on next page...

Continued from previous page...

Atom-1	Atom-2	Interatomic distance (Å)	Clash overlap (Å)
1:B:35:TRP:HE1	1:B:279:GLN:HE22	1.55	0.54
1:A:97:PRO:HG2	1:A:126:TRP:CD2	2.42	0.54
1:B:272:HIS:HD2	1:B:412:ASP:OD2	1.91	0.54
1:B:450[A]:ARG:NH2	4:E:12:DG:O6	2.39	0.54
1:B:339:ASP:HB2	1:B:436:VAL:HG12	1.90	0.54
1:A:57:LEU:HD13	1:A:203:VAL:HG11	1.90	0.54
1:B:256:ARG:HH11	1:B:257:ASN:HD21	1.55	0.54
2:C:7:TTD:C5T	2:C:7:TTD:C5A	2.84	0.53
1:B:164:ARG:NH2	7:B:606:HOH:O	2.30	0.53
1:A:364:GLN:HG2	1:A:381:TRP:HE1	1.73	0.53
1:B:357:ASP:OD2	1:B:380:TYR:OH	2.18	0.52
1:A:204:LEU:O	1:A:208:VAL:HG23	2.09	0.52
1:B:383:LYS:NZ	1:B:441:ARG:HB3	2.25	0.52
3:F:7:DA:H2'	3:F:8:DA:C8	2.45	0.52
1:A:291:ASN:HB3	1:A:294:SER:HB2	1.91	0.51
1:A:411[A]:ARG:NH1	7:A:601:HOH:O	2.43	0.51
1:B:339:ASP:O	1:B:341:ARG:NH1	2.43	0.51
1:A:16:GLN:NE2	7:A:612:HOH:O	2.38	0.51
3:F:1:DT:H2'	3:F:2:DG:C8	2.46	0.51
1:B:100:LYS:NZ	7:B:616:HOH:O	2.43	0.51
4:E:4:DG:H4'	4:E:5:DG:OP1	2.11	0.51
1:A:334:ASN:ND2	7:A:628:HOH:O	2.45	0.50
1:A:347:LEU:HD23	1:A:398:ILE:HG23	1.93	0.50
1:B:451:LYS:NZ	4:E:10:DG:OP2	2.42	0.50
1:B:311:ASN:ND2	7:B:614:HOH:O	2.38	0.49
1:A:374:HIS:CD2	1:A:376:TYR:H	2.31	0.49
1:A:411[B]:ARG:HB2	1:A:411[B]:ARG:HH11	1.78	0.48
1:A:28:ASP:HA	1:A:274:GLY:HA3	1.94	0.48
1:A:266:ASN:HA	1:A:372:LYS:HE3	1.95	0.48
1:A:218:LEU:HG	1:A:219:LYS:H	1.79	0.48
2:C:3:DC:H2'	2:C:4:DG:C8	2.49	0.48
1:B:264:LEU:HD11	1:B:374:HIS:CD2	2.49	0.48
1:A:113:LEU:HB2	1:A:136:ILE:HD11	1.96	0.47
1:B:34:ASN:O	1:B:38:LEU:HD12	2.14	0.47
1:B:241:MET:O	1:B:245:ILE:HD12	2.14	0.47
1:B:339:ASP:CB	1:B:436:VAL:HG12	2.44	0.47
1:A:113:LEU:HD22	1:A:138:PHE:CE1	2.49	0.47
1:A:394:LYS:O	1:A:398:ILE:HG12	2.15	0.47
1:B:419:ILE:HG23	1:B:423:ILE:HD12	1.97	0.47
1:A:268:SER:HB3	5:A:501:FAD:H5'2	1.97	0.47
1:A:383:LYS:HD2	1:A:443:MET:HG3	1.97	0.46

Continued on next page...

Continued from previous page...

Atom-1	Atom-2	Interatomic distance (Å)	Clash overlap (Å)
1:B:259:PRO:HA	1:B:374:HIS:CD2	2.51	0.46
2:C:10:DC:H2''	2:C:11:DG:C8	2.50	0.46
1:A:358:PRO:HB2	1:A:458:ILE:HD13	1.97	0.46
1:B:441:ARG:NH2	4:E:8:DT:OP2	2.36	0.46
1:A:252:TYR:O	1:A:256:ARG:HB3	2.16	0.46
1:A:336:HIS:NE2	1:A:433:GLU:OE2	2.48	0.46
1:B:67:ARG:HH21	1:B:371:GLY:HA2	1.81	0.46
1:B:252:TYR:O	1:B:256:ARG:HB3	2.15	0.46
1:B:451:LYS:NZ	4:E:9:DC:OP1	2.40	0.45
1:A:38:LEU:HD23	1:A:181:LEU:HD23	1.97	0.45
1:B:155:LYS:HE3	1:B:155:LYS:HB2	1.59	0.45
1:B:266:ASN:HA	1:B:372:LYS:HE3	1.97	0.45
1:B:394:LYS:HD3	1:B:394:LYS:HA	1.73	0.45
1:B:58:THR:HG22	1:B:97:PRO:HD3	1.99	0.45
1:A:12:LYS:HD2	1:A:131:ILE:HG23	1.98	0.45
1:B:373:MET:HE3	1:B:378[B]:ARG:HG2	1.99	0.45
1:B:383:LYS:HZ1	1:B:441:ARG:HB3	1.80	0.45
1:A:23:TYR:HD2	1:A:53:VAL:HG12	1.82	0.45
1:A:244:PHE:O	1:A:249:LEU:N	2.48	0.45
1:B:19:GLY:HA3	1:B:109:ASN:O	2.17	0.45
1:A:19:GLY:HA3	1:A:109:ASN:O	2.17	0.44
1:A:97:PRO:HG2	1:A:126:TRP:CE2	2.53	0.44
1:B:366:GLU:HG3	1:B:461:TYR:CZ	2.53	0.44
1:B:272:HIS:CD2	1:B:412:ASP:HB2	2.53	0.44
1:B:64:ALA:HB1	1:B:411:ARG:NH2	2.33	0.43
1:B:114:VAL:HG22	1:B:139:PHE:HB2	2.00	0.43
1:B:359:LEU:HD13	1:B:454:VAL:HG13	1.99	0.43
1:A:336:HIS:ND1	1:A:339:ASP:OD2	2.52	0.43
1:B:72:MET:HG3	1:B:273:PHE:CD2	2.51	0.43
1:B:389:SER:OG	1:B:395:ALA:HB2	2.19	0.43
3:F:1:DT:H2''	3:F:2:DG:OP1	2.18	0.43
4:E:7:DT:H1'	4:E:8:DT:H5'	2.01	0.43
1:B:11:LEU:HD11	1:B:140:GLU:HB2	2.02	0.42
1:A:8:ILE:HD12	1:A:141:VAL:HG22	2.01	0.42
1:A:268:SER:OG	1:A:269:PRO:HD3	2.19	0.42
4:E:14:DA:C8	4:E:14:DA:H5'	2.55	0.42
2:C:7:TTD:H2''	2:C:7:TTD:H6	1.73	0.42
1:B:28:ASP:HA	1:B:274:GLY:HA3	2.02	0.42
1:B:121:ARG:NH2	1:B:320:ASP:OD1	2.44	0.42
1:B:248:ARG:NH1	7:B:620:HOH:O	2.50	0.42
1:B:393:GLU:OE1	1:B:393:GLU:N	2.47	0.42

Continued on next page...

Continued from previous page...

Atom-1	Atom-2	Interatomic distance (Å)	Clash overlap (Å)
1:A:361:ASN:O	1:A:365:MET:HG2	2.19	0.41
1:B:241:MET:HE2	1:B:276:ILE:HD11	2.02	0.41
1:B:248:ARG:HG2	1:B:263:MET:HA	2.02	0.41
1:B:384:LYS:HD2	1:B:384:LYS:HA	1.82	0.41
1:A:171:LEU:HD23	1:A:171:LEU:HA	1.88	0.41
1:B:44:ALA:HB1	1:B:49:VAL:O	2.20	0.41
1:B:268:SER:OG	1:B:269:PRO:HD3	2.20	0.41
1:B:460[A]:LYS:HD2	1:B:461:TYR:CZ	2.55	0.41
1:B:305:TRP:CZ3	4:E:7:DT:H72	2.56	0.41
1:A:44:ALA:HB1	1:A:49:VAL:O	2.21	0.40
1:A:341:ARG:H	1:B:125:GLN:NE2	2.14	0.40
1:A:384:LYS:HA	1:A:384:LYS:HD3	1.77	0.40

There are no symmetry-related clashes.

5.3 Torsion angles [i](#)

5.3.1 Protein backbone [i](#)

In the following table, the Percentiles column shows the percent Ramachandran outliers of the chain as a percentile score with respect to all X-ray entries followed by that with respect to entries of similar resolution.

The Analysed column shows the number of residues for which the backbone conformation was analysed, and the total number of residues.

Mol	Chain	Analysed	Favoured	Allowed	Outliers	Percentiles	
1	A	459/482 (95%)	453 (99%)	6 (1%)	0	100	100
1	B	440/482 (91%)	437 (99%)	3 (1%)	0	100	100
All	All	899/964 (93%)	890 (99%)	9 (1%)	0	100	100

There are no Ramachandran outliers to report.

5.3.2 Protein sidechains [i](#)

In the following table, the Percentiles column shows the percent sidechain outliers of the chain as a percentile score with respect to all X-ray entries followed by that with respect to entries of similar resolution.

The Analysed column shows the number of residues for which the sidechain conformation was

analysed, and the total number of residues.

Mol	Chain	Analysed	Rotameric	Outliers	Percentiles	
1	A	377/416 (91%)	367 (97%)	10 (3%)	44	46
1	B	363/416 (87%)	352 (97%)	11 (3%)	41	40
All	All	740/832 (89%)	719 (97%)	21 (3%)	49	44

All (21) residues with a non-rotameric sidechain are listed below:

Mol	Chain	Res	Type
1	A	132[A]	SER
1	A	132[B]	SER
1	A	204	LEU
1	A	241	MET
1	A	323[A]	GLU
1	A	323[B]	GLU
1	A	354	LYS
1	A	411[A]	ARG
1	A	411[B]	ARG
1	A	429	ARG
1	B	-1	ARG
1	B	3[A]	MET
1	B	3[B]	MET
1	B	38	LEU
1	B	69	TYR
1	B	155	LYS
1	B	248	ARG
1	B	256	ARG
1	B	294	SER
1	B	354	LYS
1	B	373	MET

Sometimes sidechains can be flipped to improve hydrogen bonding and reduce clashes. All (11) such sidechains are listed below:

Mol	Chain	Res	Type
1	A	77	GLN
1	A	125	GLN
1	A	161	HIS
1	A	291	ASN
1	A	364	GLN
1	B	77	GLN
1	B	125	GLN

Continued on next page...

Continued from previous page...

Mol	Chain	Res	Type
1	B	257	ASN
1	B	279	GLN
1	B	311	ASN
1	B	343	HIS

5.3.3 RNA [i](#)

There are no RNA molecules in this entry.

5.4 Non-standard residues in protein, DNA, RNA chains [i](#)

1 non-standard protein/DNA/RNA residue is modelled in this entry.

In the following table, the Counts columns list the number of bonds (or angles) for which Mogul statistics could be retrieved, the number of bonds (or angles) that are observed in the model and the number of bonds (or angles) that are defined in the Chemical Component Dictionary. The Link column lists molecule types, if any, to which the group is linked. The Z score for a bond length (or angle) is the number of standard deviations the observed value is removed from the expected value. A bond length (or angle) with $|Z| > 2$ is considered an outlier worth inspection. RMSZ is the root-mean-square of all Z scores of the bond lengths (or angles).

Mol	Type	Chain	Res	Link	Bond lengths			Bond angles		
					Counts	RMSZ	# Z > 2	Counts	RMSZ	# Z > 2
2	TTD	C	7	2	42,45,46	5.14	8 (19%)	62,74,77	2.59	16 (25%)

In the following table, the Chirals column lists the number of chiral outliers, the number of chiral centers analysed, the number of these observed in the model and the number defined in the Chemical Component Dictionary. Similar counts are reported in the Torsion and Rings columns. '-' means no outliers of that kind were identified.

Mol	Type	Chain	Res	Link	Chirals	Torsions	Rings
2	TTD	C	7	2	-	11/22/109/110	0/5/6/6

All (8) bond length outliers are listed below:

Mol	Chain	Res	Type	Atoms	Z	Observed(Å)	Ideal(Å)
2	C	7	TTD	C6T-C6	31.41	2.47	1.56
2	C	7	TTD	C5T-C5	7.65	2.31	1.61
2	C	7	TTD	C1'-N1	-3.36	1.41	1.45
2	C	7	TTD	C2T-N1T	3.24	1.43	1.36
2	C	7	TTD	C5T-C6T	-2.93	1.51	1.55

Continued on next page...

Continued from previous page...

Mol	Chain	Res	Type	Atoms	Z	Observed(Å)	Ideal(Å)
2	C	7	TTD	C4T-N3T	-2.52	1.33	1.37
2	C	7	TTD	C2-N3	-2.30	1.33	1.38
2	C	7	TTD	C2T-N3T	-2.27	1.33	1.38

All (16) bond angle outliers are listed below:

Mol	Chain	Res	Type	Atoms	Z	Observed(°)	Ideal(°)
2	C	7	TTD	C5A-C5-C5T	-8.04	93.16	116.39
2	C	7	TTD	C5A-C5-C6	7.63	137.60	114.16
2	C	7	TTD	C5-C5T-C6T	6.80	96.84	88.38
2	C	7	TTD	O4-C4-C5	-6.62	117.59	122.88
2	C	7	TTD	N3T-C2T-N1T	5.89	122.80	116.69
2	C	7	TTD	C5-C4-N3	5.38	120.75	116.06
2	C	7	TTD	O2T-C2T-N1T	-4.27	116.86	123.49
2	C	7	TTD	C2'-C1'-N1	-3.78	110.48	115.59
2	C	7	TTD	O4T-C4T-C5T	-3.78	119.86	122.88
2	C	7	TTD	C5T-C6T-C6	-3.68	83.25	89.28
2	C	7	TTD	N3-C2-N1	3.29	120.11	116.69
2	C	7	TTD	C6-C6T-N1T	-3.02	106.12	118.20
2	C	7	TTD	C5T-C4T-N3T	2.78	118.48	116.06
2	C	7	TTD	C5M-C5T-C4T	-2.48	103.94	108.22
2	C	7	TTD	O2-C2-N1	-2.44	119.71	123.49
2	C	7	TTD	C5T-C5-C4	-2.32	105.57	113.21

There are no chirality outliers.

All (11) torsion outliers are listed below:

Mol	Chain	Res	Type	Atoms
2	C	7	TTD	O4'-C4R-C5'-O5'
2	C	7	TTD	C3R-C4R-C5'-O5'
2	C	7	TTD	C2'-C1'-N1-C6
2	C	7	TTD	C2R-C1R-N1T-C6T
2	C	7	TTD	O4R-C4'-C5R-O5R
2	C	7	TTD	C3'-C4'-C5R-O5R
2	C	7	TTD	O4R-C1R-N1T-C6T
2	C	7	TTD	O4'-C1'-N1-C6
2	C	7	TTD	C2'-C1'-N1-C2
2	C	7	TTD	O4'-C1'-N1-C2
2	C	7	TTD	O4R-C1R-N1T-C2T

There are no ring outliers.

1 monomer is involved in 5 short contacts:

Mol	Chain	Res	Type	Clashes	Symm-Clashes
2	C	7	TTD	5	0

5.5 Carbohydrates [i](#)

There are no monosaccharides in this entry.

5.6 Ligand geometry [i](#)

3 ligands are modelled in this entry.

In the following table, the Counts columns list the number of bonds (or angles) for which Mogul statistics could be retrieved, the number of bonds (or angles) that are observed in the model and the number of bonds (or angles) that are defined in the Chemical Component Dictionary. The Link column lists molecule types, if any, to which the group is linked. The Z score for a bond length (or angle) is the number of standard deviations the observed value is removed from the expected value. A bond length (or angle) with $|Z| > 2$ is considered an outlier worth inspection. RMSZ is the root-mean-square of all Z scores of the bond lengths (or angles).

Mol	Type	Chain	Res	Link	Bond lengths			Bond angles		
					Counts	RMSZ	# Z > 2	Counts	RMSZ	# Z > 2
5	FAD	A	501	-	53,58,58	0.61	0	68,89,89	0.84	4 (5%)
6	SO4	A	502	-	4,4,4	0.13	0	6,6,6	0.06	0
5	FAD	B	501	-	53,58,58	0.46	0	68,89,89	0.52	2 (2%)

In the following table, the Chirals column lists the number of chiral outliers, the number of chiral centers analysed, the number of these observed in the model and the number defined in the Chemical Component Dictionary. Similar counts are reported in the Torsion and Rings columns. '·' means no outliers of that kind were identified.

Mol	Type	Chain	Res	Link	Chirals	Torsions	Rings
5	FAD	A	501	-	-	6/30/50/50	0/6/6/6
5	FAD	B	501	-	-	6/30/50/50	0/6/6/6

There are no bond length outliers.

All (6) bond angle outliers are listed below:

Mol	Chain	Res	Type	Atoms	Z	Observed(°)	Ideal(°)
5	A	501	FAD	P-O3P-PA	-2.63	123.78	132.83
5	A	501	FAD	C9A-C5X-N5	-2.55	119.66	122.43

Continued on next page...

Continued from previous page...

Mol	Chain	Res	Type	Atoms	Z	Observed(°)	Ideal(°)
5	B	501	FAD	P-O3P-PA	-2.43	124.49	132.83
5	A	501	FAD	C5A-C6A-N6A	2.29	123.83	120.35
5	B	501	FAD	C5A-C6A-N6A	2.25	123.77	120.35
5	A	501	FAD	C4-N3-C2	-2.06	121.83	125.64

There are no chirality outliers.

All (12) torsion outliers are listed below:

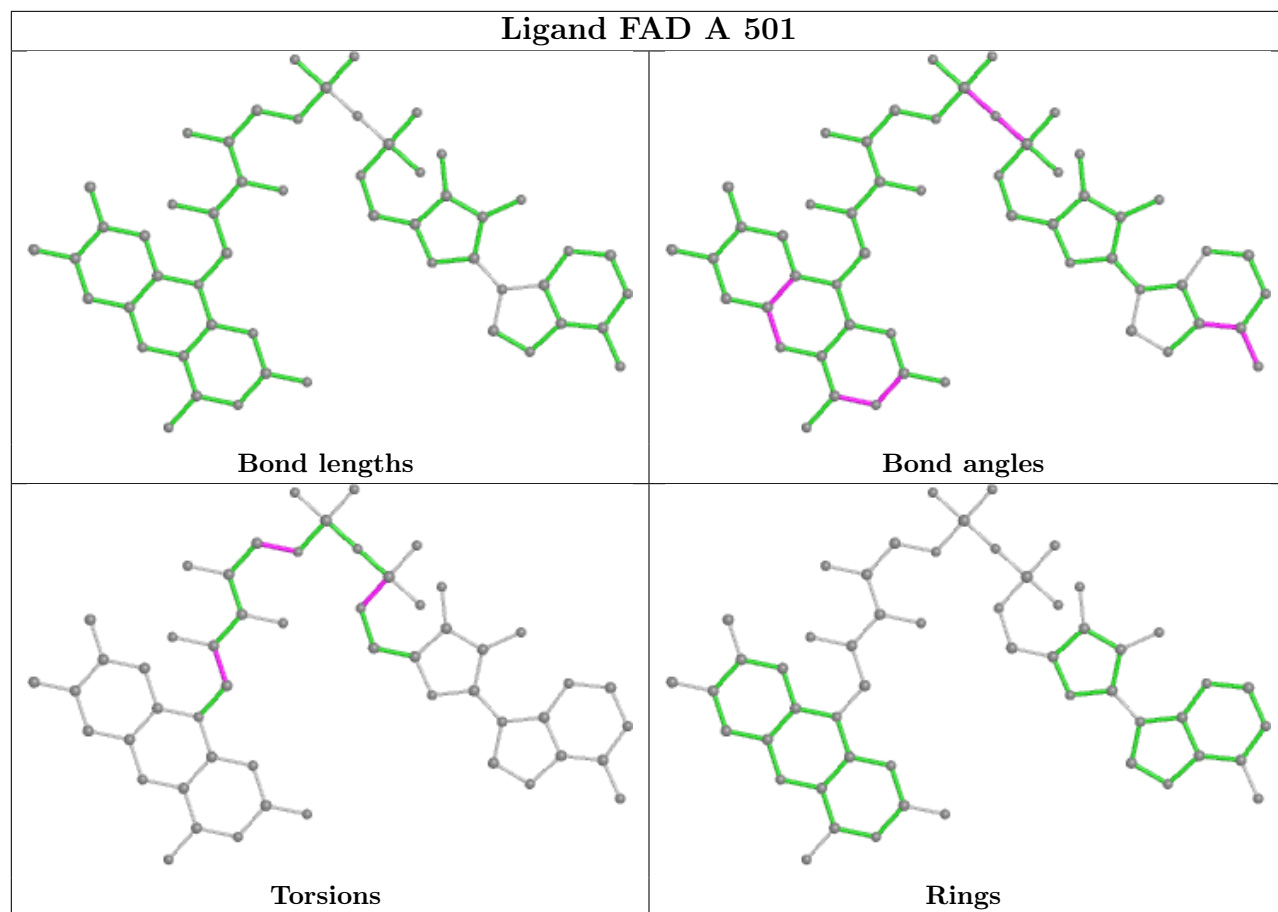
Mol	Chain	Res	Type	Atoms
5	A	501	FAD	C5B-O5B-PA-O1A
5	A	501	FAD	N10-C1'-C2'-C3'
5	B	501	FAD	C5B-O5B-PA-O1A
5	B	501	FAD	N10-C1'-C2'-C3'
5	A	501	FAD	C5B-O5B-PA-O3P
5	A	501	FAD	C4'-C5'-O5'-P
5	B	501	FAD	C4'-C5'-O5'-P
5	A	501	FAD	C5B-O5B-PA-O2A
5	B	501	FAD	C5B-O5B-PA-O2A
5	B	501	FAD	N10-C1'-C2'-O2'
5	B	501	FAD	C5B-O5B-PA-O3P
5	A	501	FAD	N10-C1'-C2'-O2'

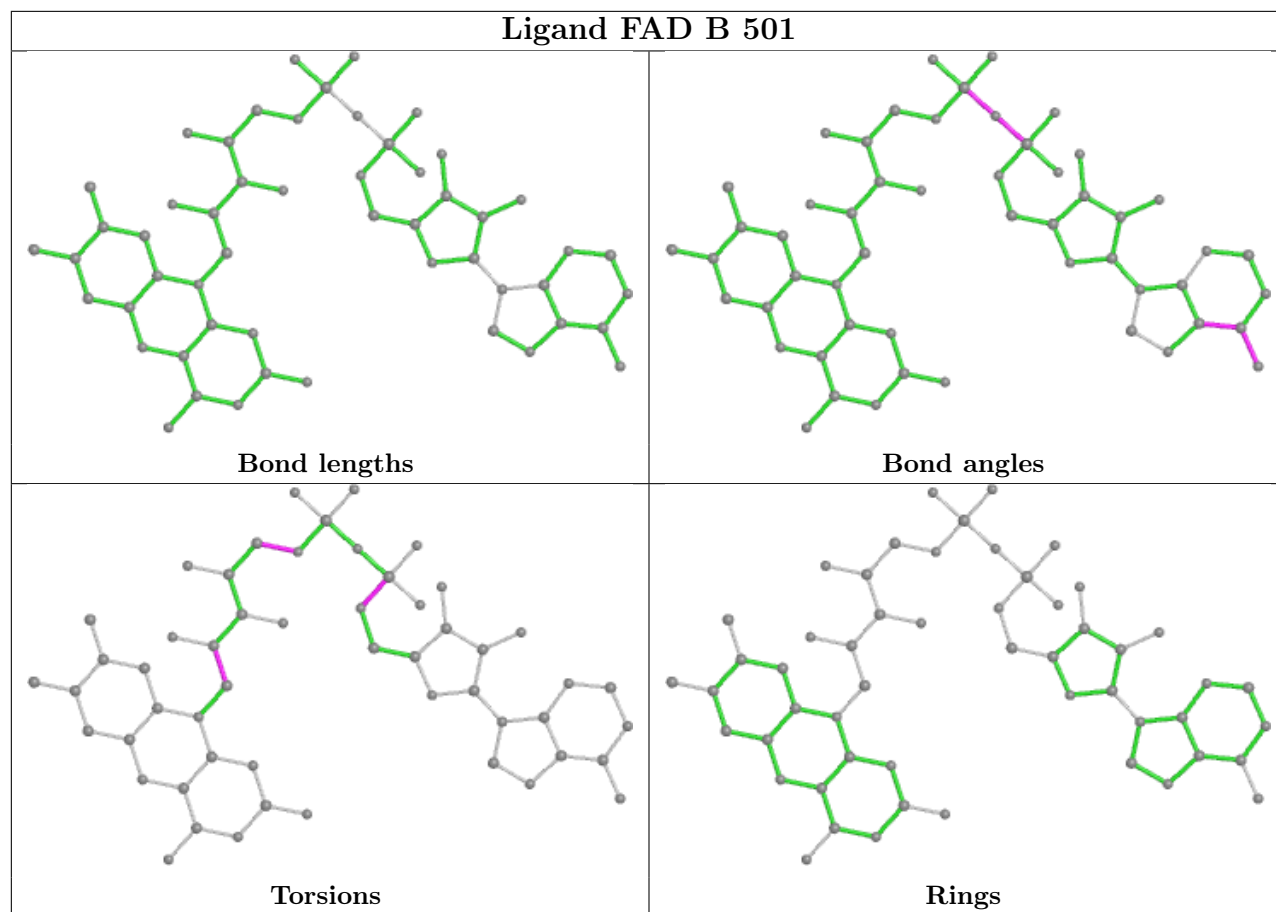
There are no ring outliers.

1 monomer is involved in 1 short contact:

Mol	Chain	Res	Type	Clashes	Symm-Clashes
5	A	501	FAD	1	0

The following is a two-dimensional graphical depiction of Mogul quality analysis of bond lengths, bond angles, torsion angles, and ring geometry for all instances of the Ligand of Interest. In addition, ligands with molecular weight > 250 and outliers as shown on the validation Tables will also be included. For torsion angles, if less than 5% of the Mogul distribution of torsion angles is within 10 degrees of the torsion angle in question, then that torsion angle is considered an outlier. Any bond that is central to one or more torsion angles identified as an outlier by Mogul will be highlighted in the graph. For rings, the root-mean-square deviation (RMSD) between the ring in question and similar rings identified by Mogul is calculated over all ring torsion angles. If the average RMSD is greater than 60 degrees and the minimal RMSD between the ring in question and any Mogul-identified rings is also greater than 60 degrees, then that ring is considered an outlier. The outliers are highlighted in purple. The color gray indicates Mogul did not find sufficient equivalents in the CSD to analyse the geometry.





5.7 Other polymers [i](#)

There are no such residues in this entry.

5.8 Polymer linkage issues [i](#)

There are no chain breaks in this entry.

6 Fit of model and data [i](#)

6.1 Protein, DNA and RNA chains [i](#)

In the following table, the column labelled ‘#RSRZ> 2’ contains the number (and percentage) of RSRZ outliers, followed by percent RSRZ outliers for the chain as percentile scores relative to all X-ray entries and entries of similar resolution. The OWAB column contains the minimum, median, 95th percentile and maximum values of the occupancy-weighted average B-factor per residue. The column labelled ‘Q< 0.9’ lists the number of (and percentage) of residues with an average occupancy less than 0.9.

Mol	Chain	Analysed	<RSRZ>	#RSRZ>2	OWAB(Å ²)	Q<0.9
1	A	456/482 (94%)	0.53	18 (3%) 39 48	9, 16, 46, 78	0
1	B	434/482 (90%)	0.43	13 (2%) 50 59	12, 23, 46, 81	0
2	C	10/14 (71%)	-0.12	0 100 100	20, 43, 63, 64	0
3	D	14/14 (100%)	-0.04	0 100 100	28, 55, 68, 72	0
3	F	13/14 (92%)	-0.04	0 100 100	37, 55, 66, 71	0
4	E	11/15 (73%)	-0.04	0 100 100	31, 44, 62, 64	0
All	All	938/1021 (91%)	0.45	31 (3%) 46 55	9, 21, 53, 81	0

All (31) RSRZ outliers are listed below:

Mol	Chain	Res	Type	RSRZ
1	B	113	LEU	3.1
1	B	101	ILE	2.9
1	A	51	VAL	2.9
1	A	101	ILE	2.9
1	B	105	VAL	2.8
1	B	360	TRP	2.7
1	A	359	LEU	2.7
1	A	274	GLY	2.6
1	A	417	ALA	2.6
1	A	430	ALA	2.6
1	A	252	TYR	2.5
1	A	149	CYS	2.5
1	B	252	TYR	2.5
1	A	308	ILE	2.4
1	A	311	ASN	2.3
1	B	367	LEU	2.3
1	B	146	VAL	2.3
1	A	419	ILE	2.3
1	B	51	VAL	2.2

Continued on next page...

Continued from previous page...

Mol	Chain	Res	Type	RSRZ
1	B	359	LEU	2.2
1	A	264	LEU	2.1
1	A	141	VAL	2.1
1	B	406	TYR	2.1
1	A	440	ILE	2.1
1	A	375	GLY	2.1
1	B	273	PHE	2.1
1	A	66	ILE	2.0
1	B	417	ALA	2.0
1	A	271	LEU	2.0
1	A	368	LEU	2.0
1	B	380	TYR	2.0

6.2 Non-standard residues in protein, DNA, RNA chains [i](#)

In the following table, the Atoms column lists the number of modelled atoms in the group and the number defined in the chemical component dictionary. The B-factors column lists the minimum, median, 95th percentile and maximum values of B factors of atoms in the group. The column labelled 'Q< 0.9' lists the number of atoms with occupancy less than 0.9.

Mol	Type	Chain	Res	Atoms	RSCC	RSR	B-factors(Å ²)	Q<0.9
2	TTD	C	7	40/41	0.88	0.13	10,14,21,22	0

6.3 Carbohydrates [i](#)

There are no monosaccharides in this entry.

6.4 Ligands [i](#)

In the following table, the Atoms column lists the number of modelled atoms in the group and the number defined in the chemical component dictionary. The B-factors column lists the minimum, median, 95th percentile and maximum values of B factors of atoms in the group. The column labelled 'Q< 0.9' lists the number of atoms with occupancy less than 0.9.

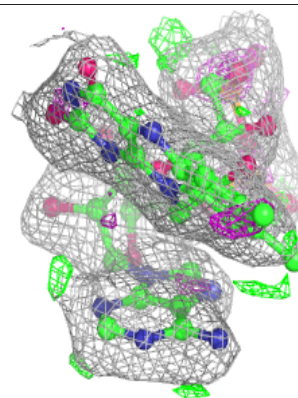
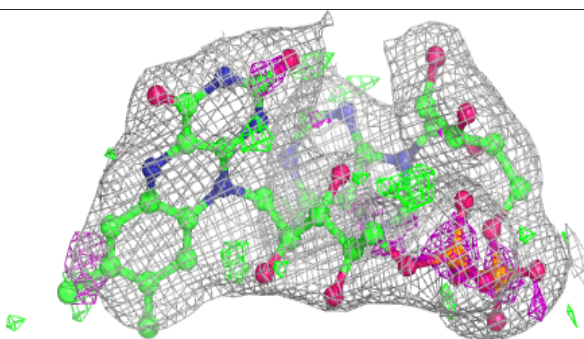
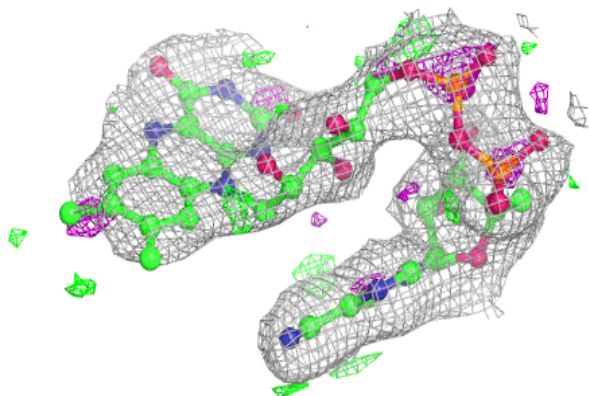
Mol	Type	Chain	Res	Atoms	RSCC	RSR	B-factors(Å ²)	Q<0.9
5	FAD	A	501	53/53	0.84	0.17	9,9,11,20	0
5	FAD	B	501	53/53	0.85	0.15	12,15,16,19	0
6	SO4	A	502	5/5	0.95	0.12	15,16,20,21	0

The following is a graphical depiction of the model fit to experimental electron density of all instances of the Ligand of Interest. In addition, ligands with molecular weight > 250 and outliers

as shown on the geometry validation Tables will also be included. Each fit is shown from different orientation to approximate a three-dimensional view.

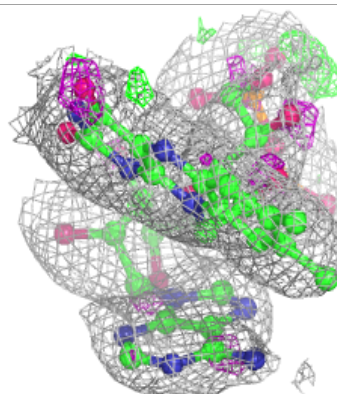
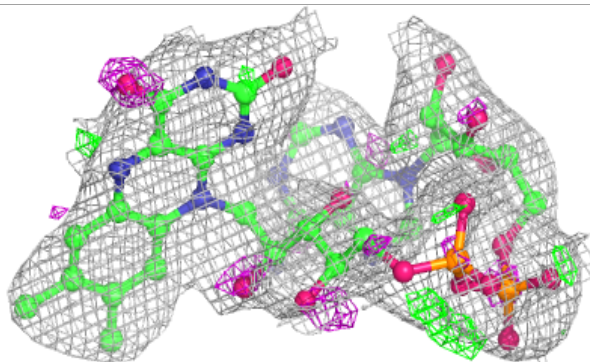
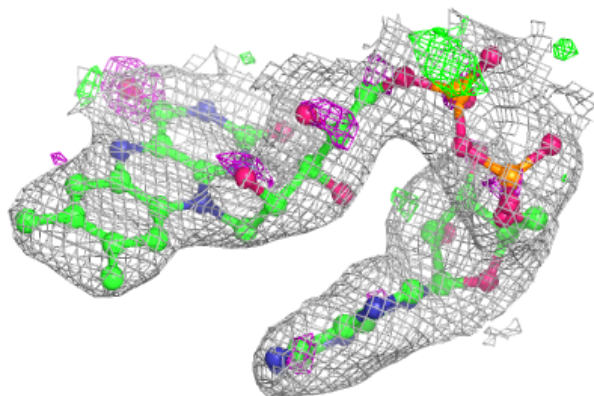
Electron density around FAD A 501:

$2mF_o-DF_c$ (at 0.7 rmsd) in gray
 mF_o-DF_c (at 3 rmsd) in purple (negative)
and green (positive)



Electron density around FAD B 501:

$2mF_o-DF_c$ (at 0.7 rmsd) in gray
 mF_o-DF_c (at 3 rmsd) in purple (negative)
and green (positive)



6.5 Other polymers [i](#)

There are no such residues in this entry.