



# Full wwPDB X-ray Structure Validation Report ⓘ

Oct 15, 2023 – 01:32 AM EDT

PDB ID : 7UJ4  
Title : Inhibition of Human Menin by SNDX-5613  
Authors : McKeever, B.M.; Kulkarni, S.; McGeehan, G.M.  
Deposited on : 2022-03-30  
Resolution : 1.96 Å(reported)

This is a Full wwPDB X-ray Structure Validation Report for a publicly released PDB entry.

We welcome your comments at [validation@mail.wwpdb.org](mailto:validation@mail.wwpdb.org)

A user guide is available at

<https://www.wwpdb.org/validation/2017/XrayValidationReportHelp>

with specific help available everywhere you see the ⓘ symbol.

The types of validation reports are described at

<http://www.wwpdb.org/validation/2017/FAQs#types>.

---

The following versions of software and data (see [references ⓘ](#)) were used in the production of this report:

MolProbity : 4.02b-467  
Mogul : 1.8.5 (274361), CSD as541be (2020)  
Xtriage (Phenix) : 1.13  
EDS : 2.36  
buster-report : 1.1.7 (2018)  
Percentile statistics : 20191225.v01 (using entries in the PDB archive December 25th 2019)  
Refmac : 5.8.0158  
CCP4 : 7.0.044 (Gargrove)  
Ideal geometry (proteins) : Engh & Huber (2001)  
Ideal geometry (DNA, RNA) : Parkinson et al. (1996)  
Validation Pipeline (wwPDB-VP) : 2.36

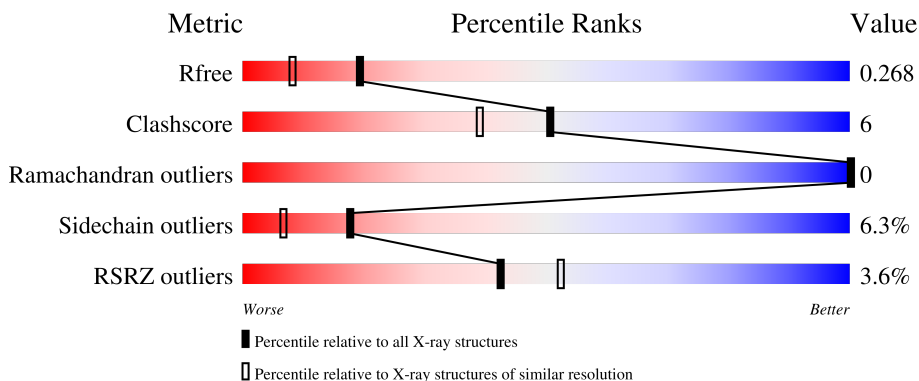
# 1 Overall quality at a glance

The following experimental techniques were used to determine the structure:

*X-RAY DIFFRACTION*

The reported resolution of this entry is 1.96 Å.

Percentile scores (ranging between 0-100) for global validation metrics of the entry are shown in the following graphic. The table shows the number of entries on which the scores are based.



Metric	Whole archive (#Entries)	Similar resolution (#Entries, resolution range(Å))
$R_{free}$	130704	2580 (1.96-1.96)
Clashscore	141614	2705 (1.96-1.96)
Ramachandran outliers	138981	2678 (1.96-1.96)
Sidechain outliers	138945	2678 (1.96-1.96)
RSRZ outliers	127900	2539 (1.96-1.96)

The table below summarises the geometric issues observed across the polymeric chains and their fit to the electron density. The red, orange, yellow and green segments of the lower bar indicate the fraction of residues that contain outliers for  $\geq 3$ , 2, 1 and 0 types of geometric quality criteria respectively. A grey segment represents the fraction of residues that are not modelled. The numeric value for each fraction is indicated below the corresponding segment, with a dot representing fractions  $\leq 5\%$ . The upper red bar (where present) indicates the fraction of residues that have poor fit to the electron density. The numeric value is given above the bar.

Mol	Chain	Length	Quality of chain
1	A	488	 2% 77% 12% • 9%
1	B	488	 5% 77% 13% • 8%

## 2 Entry composition [i](#)

There are 4 unique types of molecules in this entry. The entry contains 7366 atoms, of which 0 are hydrogens and 0 are deuteriums.

In the tables below, the ZeroOcc column contains the number of atoms modelled with zero occupancy, the AltConf column contains the number of residues with at least one atom in alternate conformation and the Trace column contains the number of residues modelled with at most 2 atoms.

- Molecule 1 is a protein called Isoform 2 of Menin.

Mol	Chain	Residues	Atoms					ZeroOcc	AltConf	Trace
			Total	C	N	O	S			
1	A	442	3515	2255	602	644	14	0	0	0
1	B	447	3547	2275	607	651	14	0	0	0

There are 190 discrepancies between the modelled and reference sequences:

Chain	Residue	Modelled	Actual	Comment	Reference
A	5	THR	ALA	engineered mutation	UNP O00255-2
A	?	-	VAL	deletion	UNP O00255-2
A	?	-	SER	deletion	UNP O00255-2
A	?	-	ARG	deletion	UNP O00255-2
A	?	-	GLU	deletion	UNP O00255-2
A	?	-	ALA	deletion	UNP O00255-2
A	?	-	GLU	deletion	UNP O00255-2
A	?	-	ALA	deletion	UNP O00255-2
A	?	-	ALA	deletion	UNP O00255-2
A	?	-	GLU	deletion	UNP O00255-2
A	?	-	ALA	deletion	UNP O00255-2
A	?	-	GLU	deletion	UNP O00255-2
A	?	-	GLU	deletion	UNP O00255-2
A	?	-	PRO	deletion	UNP O00255-2
A	?	-	TRP	deletion	UNP O00255-2
A	?	-	GLY	deletion	UNP O00255-2
A	?	-	GLU	deletion	UNP O00255-2
A	?	-	GLU	deletion	UNP O00255-2
A	?	-	ALA	deletion	UNP O00255-2
A	?	-	ARG	deletion	UNP O00255-2
A	?	-	GLU	deletion	UNP O00255-2
A	?	-	GLY	deletion	UNP O00255-2
A	?	-	ARG	deletion	UNP O00255-2
A	?	-	ARG	deletion	UNP O00255-2
A	?	-	ARG	deletion	UNP O00255-2

*Continued on next page...*

*Continued from previous page...*

Chain	Residue	Modelled	Actual	Comment	Reference
A	?	-	GLY	deletion	UNP O00255-2
A	?	-	PRO	deletion	UNP O00255-2
A	?	-	ARG	deletion	UNP O00255-2
A	?	-	ARG	deletion	UNP O00255-2
A	?	-	GLU	deletion	UNP O00255-2
A	?	-	SER	deletion	UNP O00255-2
A	?	-	LYS	deletion	UNP O00255-2
A	?	-	PRO	deletion	UNP O00255-2
A	?	-	GLU	deletion	UNP O00255-2
A	?	-	GLU	deletion	UNP O00255-2
A	?	-	PRO	deletion	UNP O00255-2
A	?	-	PRO	deletion	UNP O00255-2
A	?	-	PRO	deletion	UNP O00255-2
A	?	-	PRO	deletion	UNP O00255-2
A	?	-	LYS	deletion	UNP O00255-2
A	?	-	LYS	deletion	UNP O00255-2
A	?	-	PRO	deletion	UNP O00255-2
A	?	-	ALA	deletion	UNP O00255-2
A	?	-	LEU	deletion	UNP O00255-2
A	?	-	ASP	deletion	UNP O00255-2
A	?	-	LYS	deletion	UNP O00255-2
A	?	-	GLY	deletion	UNP O00255-2
A	?	-	LEU	deletion	UNP O00255-2
A	?	-	GLY	deletion	UNP O00255-2
A	?	-	THR	deletion	UNP O00255-2
A	?	-	GLY	deletion	UNP O00255-2
A	?	-	GLN	deletion	UNP O00255-2
A	?	-	GLY	deletion	UNP O00255-2
A	?	-	ALA	deletion	UNP O00255-2
A	?	-	VAL	deletion	UNP O00255-2
A	?	-	SER	deletion	UNP O00255-2
A	?	-	GLY	deletion	UNP O00255-2
A	?	-	PRO	deletion	UNP O00255-2
A	?	-	PRO	deletion	UNP O00255-2
A	?	-	ARG	deletion	UNP O00255-2
A	?	-	LYS	deletion	UNP O00255-2
A	?	-	PRO	deletion	UNP O00255-2
A	?	-	PRO	deletion	UNP O00255-2
A	?	-	GLY	deletion	UNP O00255-2
A	?	-	THR	deletion	UNP O00255-2
A	?	-	VAL	deletion	UNP O00255-2
A	?	-	ALA	deletion	UNP O00255-2

*Continued on next page...*

*Continued from previous page...*

Chain	Residue	Modelled	Actual	Comment	Reference
A	?	-	GLY	deletion	UNP O00255-2
A	?	-	THR	deletion	UNP O00255-2
A	?	-	ALA	deletion	UNP O00255-2
A	?	-	ARG	deletion	UNP O00255-2
A	?	-	GLY	deletion	UNP O00255-2
A	?	-	PRO	deletion	UNP O00255-2
A	?	-	GLU	deletion	UNP O00255-2
A	?	-	GLY	deletion	UNP O00255-2
A	?	-	GLY	deletion	UNP O00255-2
A	?	-	SER	deletion	UNP O00255-2
A	?	-	THR	deletion	UNP O00255-2
A	?	-	ALA	deletion	UNP O00255-2
A	?	-	GLN	deletion	UNP O00255-2
A	?	-	VAL	deletion	UNP O00255-2
A	?	-	PRO	deletion	UNP O00255-2
A	?	-	ALA	deletion	UNP O00255-2
A	?	-	PRO	deletion	UNP O00255-2
A	?	-	THR	deletion	UNP O00255-2
A	?	-	ALA	deletion	UNP O00255-2
A	?	-	SER	deletion	UNP O00255-2
A	?	-	PRO	deletion	UNP O00255-2
A	?	-	PRO	deletion	UNP O00255-2
A	?	-	PRO	deletion	UNP O00255-2
A	?	-	GLU	deletion	UNP O00255-2
A	?	-	GLY	deletion	UNP O00255-2
A	?	-	PRO	deletion	UNP O00255-2
A	?	-	VAL	deletion	UNP O00255-2
A	?	-	LEU	deletion	UNP O00255-2
B	5	THR	ALA	engineered mutation	UNP O00255-2
B	?	-	VAL	deletion	UNP O00255-2
B	?	-	SER	deletion	UNP O00255-2
B	?	-	ARG	deletion	UNP O00255-2
B	?	-	GLU	deletion	UNP O00255-2
B	?	-	ALA	deletion	UNP O00255-2
B	?	-	GLU	deletion	UNP O00255-2
B	?	-	ALA	deletion	UNP O00255-2
B	?	-	ALA	deletion	UNP O00255-2
B	?	-	GLU	deletion	UNP O00255-2
B	?	-	ALA	deletion	UNP O00255-2
B	?	-	GLU	deletion	UNP O00255-2
B	?	-	ALA	deletion	UNP O00255-2
B	?	-	GLU	deletion	UNP O00255-2
B	?	-	GLU	deletion	UNP O00255-2
B	?	-	PRO	deletion	UNP O00255-2

*Continued on next page...*

*Continued from previous page...*

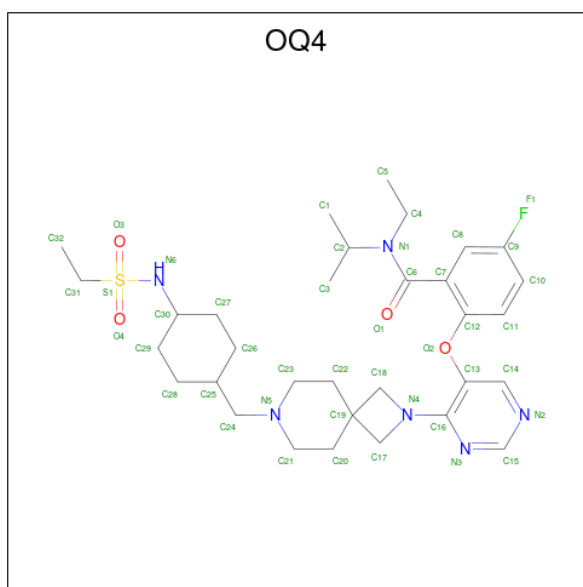
Chain	Residue	Modelled	Actual	Comment	Reference
B	?	-	TRP	deletion	UNP O00255-2
B	?	-	GLY	deletion	UNP O00255-2
B	?	-	GLU	deletion	UNP O00255-2
B	?	-	GLU	deletion	UNP O00255-2
B	?	-	ALA	deletion	UNP O00255-2
B	?	-	ARG	deletion	UNP O00255-2
B	?	-	GLU	deletion	UNP O00255-2
B	?	-	GLY	deletion	UNP O00255-2
B	?	-	ARG	deletion	UNP O00255-2
B	?	-	ARG	deletion	UNP O00255-2
B	?	-	ARG	deletion	UNP O00255-2
B	?	-	GLY	deletion	UNP O00255-2
B	?	-	PRO	deletion	UNP O00255-2
B	?	-	ARG	deletion	UNP O00255-2
B	?	-	ARG	deletion	UNP O00255-2
B	?	-	GLU	deletion	UNP O00255-2
B	?	-	SER	deletion	UNP O00255-2
B	?	-	LYS	deletion	UNP O00255-2
B	?	-	PRO	deletion	UNP O00255-2
B	?	-	GLU	deletion	UNP O00255-2
B	?	-	GLU	deletion	UNP O00255-2
B	?	-	PRO	deletion	UNP O00255-2
B	?	-	PRO	deletion	UNP O00255-2
B	?	-	PRO	deletion	UNP O00255-2
B	?	-	PRO	deletion	UNP O00255-2
B	?	-	LYS	deletion	UNP O00255-2
B	?	-	LYS	deletion	UNP O00255-2
B	?	-	PRO	deletion	UNP O00255-2
B	?	-	ALA	deletion	UNP O00255-2
B	?	-	LEU	deletion	UNP O00255-2
B	?	-	ASP	deletion	UNP O00255-2
B	?	-	LYS	deletion	UNP O00255-2
B	?	-	GLY	deletion	UNP O00255-2
B	?	-	LEU	deletion	UNP O00255-2
B	?	-	GLY	deletion	UNP O00255-2
B	?	-	THR	deletion	UNP O00255-2
B	?	-	GLY	deletion	UNP O00255-2
B	?	-	GLN	deletion	UNP O00255-2
B	?	-	GLY	deletion	UNP O00255-2
B	?	-	ALA	deletion	UNP O00255-2
B	?	-	VAL	deletion	UNP O00255-2
B	?	-	SER	deletion	UNP O00255-2

*Continued on next page...*

Continued from previous page...

Chain	Residue	Modelled	Actual	Comment	Reference
B	?	-	GLY	deletion	UNP O00255-2
B	?	-	PRO	deletion	UNP O00255-2
B	?	-	PRO	deletion	UNP O00255-2
B	?	-	ARG	deletion	UNP O00255-2
B	?	-	LYS	deletion	UNP O00255-2
B	?	-	PRO	deletion	UNP O00255-2
B	?	-	PRO	deletion	UNP O00255-2
B	?	-	GLY	deletion	UNP O00255-2
B	?	-	THR	deletion	UNP O00255-2
B	?	-	VAL	deletion	UNP O00255-2
B	?	-	ALA	deletion	UNP O00255-2
B	?	-	GLY	deletion	UNP O00255-2
B	?	-	THR	deletion	UNP O00255-2
B	?	-	ALA	deletion	UNP O00255-2
B	?	-	ARG	deletion	UNP O00255-2
B	?	-	GLY	deletion	UNP O00255-2
B	?	-	PRO	deletion	UNP O00255-2
B	?	-	GLU	deletion	UNP O00255-2
B	?	-	GLY	deletion	UNP O00255-2
B	?	-	GLY	deletion	UNP O00255-2
B	?	-	SER	deletion	UNP O00255-2
B	?	-	THR	deletion	UNP O00255-2
B	?	-	ALA	deletion	UNP O00255-2
B	?	-	GLN	deletion	UNP O00255-2
B	?	-	VAL	deletion	UNP O00255-2
B	?	-	PRO	deletion	UNP O00255-2
B	?	-	ALA	deletion	UNP O00255-2
B	?	-	PRO	deletion	UNP O00255-2
B	?	-	THR	deletion	UNP O00255-2
B	?	-	ALA	deletion	UNP O00255-2
B	?	-	SER	deletion	UNP O00255-2
B	?	-	PRO	deletion	UNP O00255-2
B	?	-	PRO	deletion	UNP O00255-2
B	?	-	PRO	deletion	UNP O00255-2
B	?	-	GLU	deletion	UNP O00255-2
B	?	-	GLY	deletion	UNP O00255-2
B	?	-	PRO	deletion	UNP O00255-2
B	?	-	VAL	deletion	UNP O00255-2
B	?	-	LEU	deletion	UNP O00255-2

- Molecule 2 is 2-({4-[7-({(1r,4r)-4-[(ethanesulfonyl)amino]cyclohexyl)methyl)-2,7-diazaspiro[3.5]nonan-2-yl]pyrimidin-5-yl}oxy)-N-ethyl-5-fluoro-N-(propan-2-yl)benzamide (three-letter code: OQ4) (formula: C<sub>32</sub>H<sub>47</sub>FN<sub>6</sub>O<sub>4</sub>S) (labeled as "Ligand of Interest" by depositor).



Mol	Chain	Residues	Atoms					ZeroOcc	AltConf	
			Total	C	F	N	O			S
2	A	1	44	32	1	6	4	1	0	0
2	B	1	44	32	1	6	4	1	0	0

- Molecule 3 is MAGNESIUM ION (three-letter code: MG) (formula: Mg).

Mol	Chain	Residues	Atoms		ZeroOcc	AltConf
			Total	Mg		
3	A	2	2	2	0	0
3	B	2	2	2	0	0

- Molecule 4 is water.

Mol	Chain	Residues	Atoms		ZeroOcc	AltConf
			Total	O		
4	A	103	103	103	0	0
4	B	109	109	109	0	0





## 4 Data and refinement statistics

Property	Value	Source
Space group	P 1 21 1	Depositor
Cell constants a, b, c, $\alpha$ , $\beta$ , $\gamma$	69.54Å 78.04Å 92.86Å 90.00° 101.36° 90.00°	Depositor
Resolution (Å)	47.91 – 1.96 47.86 – 1.96	Depositor EDS
% Data completeness (in resolution range)	98.9 (47.91-1.96) 98.9 (47.86-1.96)	Depositor EDS
$R_{merge}$	0.14	Depositor
$R_{sym}$	(Not available)	Depositor
$\langle I/\sigma(I) \rangle$ <sup>1</sup>	1.34 (at 1.95Å)	Xtrriage
Refinement program	REFMAC 5.8.0267	Depositor
R, $R_{free}$	0.218 , 0.262 0.226 , 0.268	Depositor DCC
$R_{free}$ test set	3426 reflections (4.92%)	wwPDB-VP
Wilson B-factor (Å <sup>2</sup> )	30.1	Xtrriage
Anisotropy	0.100	Xtrriage
Bulk solvent $k_{sol}$ (e/Å <sup>3</sup> ), $B_{sol}$ (Å <sup>2</sup> )	0.38 , 46.5	EDS
L-test for twinning <sup>2</sup>	$\langle  L  \rangle = 0.51$ , $\langle L^2 \rangle = 0.34$	Xtrriage
Estimated twinning fraction	No twinning to report.	Xtrriage
$F_o, F_c$ correlation	0.95	EDS
Total number of atoms	7366	wwPDB-VP
Average B, all atoms (Å <sup>2</sup> )	40.0	wwPDB-VP

Xtrriage's analysis on translational NCS is as follows: *The largest off-origin peak in the Patterson function is 6.76% of the height of the origin peak. No significant pseudotranslation is detected.*

<sup>1</sup>Intensities estimated from amplitudes.

<sup>2</sup>Theoretical values of  $\langle |L| \rangle$ ,  $\langle L^2 \rangle$  for acentric reflections are 0.5, 0.333 respectively for untwinned datasets, and 0.375, 0.2 for perfectly twinned datasets.

## 5 Model quality

### 5.1 Standard geometry

Bond lengths and bond angles in the following residue types are not validated in this section: OQ4, MG

The Z score for a bond length (or angle) is the number of standard deviations the observed value is removed from the expected value. A bond length (or angle) with  $|Z| > 5$  is considered an outlier worth inspection. RMSZ is the root-mean-square of all Z scores of the bond lengths (or angles).

Mol	Chain	Bond lengths		Bond angles	
		RMSZ	# Z  >5	RMSZ	# Z  >5
1	A	0.73	0/3592	0.84	0/4870
1	B	0.73	0/3625	0.83	0/4913
All	All	0.73	0/7217	0.83	0/9783

There are no bond length outliers.

There are no bond angle outliers.

There are no chirality outliers.

There are no planarity outliers.

### 5.2 Too-close contacts

In the following table, the Non-H and H(model) columns list the number of non-hydrogen atoms and hydrogen atoms in the chain respectively. The H(added) column lists the number of hydrogen atoms added and optimized by MolProbity. The Clashes column lists the number of clashes within the asymmetric unit, whereas Symm-Clashes lists symmetry-related clashes.

Mol	Chain	Non-H	H(model)	H(added)	Clashes	Symm-Clashes
1	A	3515	0	3500	35	0
1	B	3547	0	3527	47	0
2	A	44	0	0	0	0
2	B	44	0	0	1	0
3	A	2	0	0	0	0
3	B	2	0	0	0	0
4	A	103	0	0	8	0
4	B	109	0	0	19	0
All	All	7366	0	7027	81	0

The all-atom clashscore is defined as the number of clashes found per 1000 atoms (including hydrogen atoms). The all-atom clashscore for this structure is 6.

All (81) close contacts within the same asymmetric unit are listed below, sorted by their clash magnitude.

Atom-1	Atom-2	Interatomic distance (Å)	Clash overlap (Å)
1:B:256:LEU:HD13	4:B:719:HOH:O	1.63	0.97
1:B:98:ARG:HD3	4:B:777:HOH:O	1.78	0.83
1:B:288:GLU:HB2	4:B:707:HOH:O	1.83	0.77
1:B:260:GLN:HB3	4:B:703:HOH:O	1.94	0.68
1:B:288:GLU:CB	4:B:707:HOH:O	2.40	0.68
1:A:29:ARG:HD2	4:A:731:HOH:O	1.94	0.66
1:B:576:LYS:CB	4:B:792:HOH:O	2.46	0.63
1:B:576:LYS:HB2	4:B:792:HOH:O	2.01	0.61
1:B:282:ASN:HB2	4:B:756:HOH:O	2.01	0.61
1:B:126:TRP:HZ3	1:B:196:VAL:O	1.87	0.58
1:B:126:TRP:CZ3	1:B:197:THR:HA	2.39	0.57
1:B:321:TYR:HB2	1:B:344:THR:HG22	1.86	0.56
1:B:195:GLU:HB2	1:B:207:ARG:HB2	1.87	0.56
1:B:457:ILE:HD11	1:B:553:PHE:CE1	2.39	0.55
1:B:126:TRP:CZ3	1:B:196:VAL:O	2.60	0.55
1:A:14:ARG:HD3	4:A:743:HOH:O	2.06	0.55
1:A:321:TYR:HB2	1:A:344:THR:HG22	1.89	0.54
1:B:256:LEU:HD22	4:B:719:HOH:O	2.07	0.54
1:A:185:VAL:HG12	1:A:193:THR:HG22	1.90	0.53
1:B:126:TRP:CH2	1:B:197:THR:HA	2.43	0.52
1:B:218:ARG:NH1	4:B:710:HOH:O	2.43	0.52
1:B:349:GLN:HB2	1:B:422:LYS:HB3	1.92	0.51
1:B:296:PRO:HD3	4:B:783:HOH:O	2.11	0.51
1:B:172:ASP:O	1:B:186:PHE:HA	2.12	0.50
1:B:185:VAL:HG12	1:B:193:THR:HG22	1.93	0.50
1:B:335:ARG:HG2	1:B:409:CYS:SG	2.52	0.50
1:B:363:GLU:HG2	4:B:714:HOH:O	2.11	0.50
1:A:186:PHE:O	1:A:192:GLN:HG2	2.13	0.49
1:A:349:GLN:HB2	1:A:422:LYS:HB3	1.94	0.49
1:A:250:HIS:HD2	1:B:250:HIS:HD2	1.60	0.49
1:A:185:VAL:HA	1:A:192:GLN:O	2.13	0.49
1:A:172:ASP:O	1:A:186:PHE:HA	2.13	0.48
1:B:185:VAL:HA	1:B:192:GLN:O	2.13	0.48
1:B:319:TYR:N	1:B:320:PRO:CD	2.76	0.48
1:A:319:TYR:N	1:A:320:PRO:CD	2.77	0.48
1:B:576:LYS:CG	4:B:792:HOH:O	2.61	0.48
1:A:137:ARG:HH12	1:A:151:LYS:HE3	1.79	0.47
1:B:140:ILE:O	1:B:152:LEU:HA	2.15	0.47
1:A:140:ILE:O	1:A:152:LEU:HA	2.14	0.47
1:B:358:GLU:HG2	1:B:362:LYS:HE3	1.97	0.46

*Continued on next page...*

*Continued from previous page...*

Atom-1	Atom-2	Interatomic distance (Å)	Clash overlap (Å)
1:A:175:LEU:CD2	1:A:177:LEU:HD21	2.45	0.46
1:B:98:ARG:CD	4:B:777:HOH:O	2.49	0.46
1:A:96:GLN:HG2	4:A:782:HOH:O	2.16	0.46
1:B:108:ARG:HG2	1:B:112:VAL:O	2.16	0.45
1:A:249:LEU:CD2	4:A:803:HOH:O	2.64	0.45
1:A:320:PRO:HG3	4:A:781:HOH:O	2.17	0.45
1:A:249:LEU:HD21	1:A:250:HIS:CE1	2.52	0.45
1:A:254:LEU:HD12	1:A:254:LEU:HA	1.87	0.45
1:A:299:LEU:HD23	1:A:299:LEU:HA	1.90	0.44
1:B:360:ILE:HD12	1:B:360:ILE:HA	1.93	0.44
1:B:561:MET:HB3	1:B:578:GLN:HG2	1.99	0.44
1:A:457:ILE:HD11	1:A:553:PHE:CE1	2.53	0.44
1:B:135:LYS:CD	4:B:779:HOH:O	2.66	0.44
1:B:256:LEU:CD1	4:B:719:HOH:O	2.43	0.44
1:A:346:THR:O	1:A:349:GLN:HG2	2.19	0.43
1:A:441:VAL:HG11	1:A:572:SER:HB2	1.99	0.43
1:B:355:ARG:CZ	1:B:355:ARG:H	2.32	0.43
1:A:108:ARG:HG2	1:A:112:VAL:O	2.18	0.43
1:B:249:LEU:H	1:B:249:LEU:HD12	1.83	0.43
1:B:346:THR:O	1:B:349:GLN:HG2	2.18	0.43
1:B:258:GLN:OE1	4:B:701:HOH:O	2.21	0.43
1:A:335:ARG:HG2	1:A:409:CYS:SG	2.59	0.43
1:A:250:HIS:HD2	1:B:250:HIS:CD2	2.37	0.42
1:A:375:LEU:HD12	1:A:375:LEU:HA	1.92	0.42
1:A:176:ALA:HA	1:A:228:MET:O	2.20	0.42
1:A:192:GLN:HG2	1:A:192:GLN:H	1.76	0.42
1:A:345:ALA:HA	1:A:348:ILE:HG22	2.02	0.41
1:B:126:TRP:HZ3	1:B:197:THR:HA	1.85	0.41
1:B:434:VAL:HA	1:B:580:THR:HG21	2.02	0.41
1:A:29:ARG:O	1:A:233:LYS:NZ	2.54	0.41
1:A:278:MET:HG3	4:A:781:HOH:O	2.20	0.41
1:A:320:PRO:HA	4:A:771:HOH:O	2.20	0.41
1:B:21:ARG:HD2	4:B:787:HOH:O	2.21	0.41
1:A:360:ILE:HD12	1:A:360:ILE:HA	1.92	0.41
1:B:29:ARG:O	1:B:233:LYS:NZ	2.54	0.41
1:B:137:ARG:NH2	1:B:151:LYS:HE3	2.35	0.41
1:A:425:GLU:O	4:A:701:HOH:O	2.22	0.41
1:B:135:LYS:HD3	4:B:779:HOH:O	2.21	0.40
2:B:601:OQ4:O2	2:B:601:OQ4:C18	2.69	0.40
1:A:236:VAL:O	1:A:240:VAL:HG23	2.21	0.40
1:B:228:MET:HE2	1:B:228:MET:HB3	1.84	0.40

There are no symmetry-related clashes.

## 5.3 Torsion angles [i](#)

### 5.3.1 Protein backbone [i](#)

In the following table, the Percentiles column shows the percent Ramachandran outliers of the chain as a percentile score with respect to all X-ray entries followed by that with respect to entries of similar resolution.

The Analysed column shows the number of residues for which the backbone conformation was analysed, and the total number of residues.

Mol	Chain	Analysed	Favoured	Allowed	Outliers	Percentiles	
1	A	434/488 (89%)	426 (98%)	8 (2%)	0	100	100
1	B	439/488 (90%)	427 (97%)	12 (3%)	0	100	100
All	All	873/976 (89%)	853 (98%)	20 (2%)	0	100	100

There are no Ramachandran outliers to report.

### 5.3.2 Protein sidechains [i](#)

In the following table, the Percentiles column shows the percent sidechain outliers of the chain as a percentile score with respect to all X-ray entries followed by that with respect to entries of similar resolution.

The Analysed column shows the number of residues for which the sidechain conformation was analysed, and the total number of residues.

Mol	Chain	Analysed	Rotameric	Outliers	Percentiles	
1	A	374/412 (91%)	348 (93%)	26 (7%)	15	5
1	B	376/412 (91%)	355 (94%)	21 (6%)	21	9
All	All	750/824 (91%)	703 (94%)	47 (6%)	18	7

All (47) residues with a non-rotameric sidechain are listed below:

Mol	Chain	Res	Type
1	A	4	LYS
1	A	14	ARG
1	A	52	ARG
1	A	53	VAL
1	A	108	ARG

*Continued on next page...*

*Continued from previous page...*

<b>Mol</b>	<b>Chain</b>	<b>Res</b>	<b>Type</b>
1	A	132	SER
1	A	135	LYS
1	A	136	ASP
1	A	154	SER
1	A	177	LEU
1	A	192	GLN
1	A	209	GLN
1	A	218	ARG
1	A	254	LEU
1	A	276	TYR
1	A	282	ASN
1	A	289	LEU
1	A	355	ARG
1	A	363	GLU
1	A	378	GLU
1	A	402	SER
1	A	429	THR
1	A	454	LYS
1	A	573	SER
1	A	576	LYS
1	A	582	GLN
1	B	4	LYS
1	B	30	GLU
1	B	108	ARG
1	B	127	ASN
1	B	132	SER
1	B	177	LEU
1	B	191	GLU
1	B	218	ARG
1	B	276	TYR
1	B	282	ASN
1	B	289	LEU
1	B	355	ARG
1	B	378	GLU
1	B	384	GLU
1	B	429	THR
1	B	442	GLN
1	B	450	GLN
1	B	563	GLU
1	B	568	THR
1	B	569	LYS
1	B	573	SER

Sometimes sidechains can be flipped to improve hydrogen bonding and reduce clashes. All (11) such sidechains are listed below:

Mol	Chain	Res	Type
1	A	96	GLN
1	A	212	ASN
1	A	250	HIS
1	A	282	ASN
1	A	374	ASN
1	A	450	GLN
1	B	51	ASN
1	B	96	GLN
1	B	250	HIS
1	B	282	ASN
1	B	578	GLN

### 5.3.3 RNA [i](#)

There are no RNA molecules in this entry.

## 5.4 Non-standard residues in protein, DNA, RNA chains [i](#)

There are no non-standard protein/DNA/RNA residues in this entry.

## 5.5 Carbohydrates [i](#)

There are no monosaccharides in this entry.

## 5.6 Ligand geometry [i](#)

Of 6 ligands modelled in this entry, 4 are monoatomic - leaving 2 for Mogul analysis.

In the following table, the Counts columns list the number of bonds (or angles) for which Mogul statistics could be retrieved, the number of bonds (or angles) that are observed in the model and the number of bonds (or angles) that are defined in the Chemical Component Dictionary. The Link column lists molecule types, if any, to which the group is linked. The Z score for a bond length (or angle) is the number of standard deviations the observed value is removed from the expected value. A bond length (or angle) with  $|Z| > 2$  is considered an outlier worth inspection. RMSZ is the root-mean-square of all Z scores of the bond lengths (or angles).

Mol	Type	Chain	Res	Link	Bond lengths			Bond angles		
					Counts	RMSZ	# Z  > 2	Counts	RMSZ	# Z  > 2
2	OQ4	B	601	-	47,48,48	1.13	2 (4%)	53,70,70	1.16	6 (11%)



Mol	Type	Chain	Res	Link	Bond lengths			Bond angles		
					Counts	RMSZ	# Z  > 2	Counts	RMSZ	# Z  > 2
2	OQ4	A	601	-	47,48,48	1.37	2 (4%)	53,70,70	1.13	4 (7%)

In the following table, the Chirals column lists the number of chiral outliers, the number of chiral centers analysed, the number of these observed in the model and the number defined in the Chemical Component Dictionary. Similar counts are reported in the Torsion and Rings columns. '-' means no outliers of that kind were identified.

Mol	Type	Chain	Res	Link	Chirals	Torsions	Rings
2	OQ4	B	601	-	-	6/30/66/66	0/5/5/5
2	OQ4	A	601	-	-	4/30/66/66	0/5/5/5

All (4) bond length outliers are listed below:

Mol	Chain	Res	Type	Atoms	Z	Observed(Å)	Ideal(Å)
2	A	601	OQ4	C17-C19	5.88	1.59	1.54
2	A	601	OQ4	C18-C19	5.41	1.59	1.54
2	B	601	OQ4	C18-C19	4.73	1.58	1.54
2	B	601	OQ4	C17-C19	4.31	1.58	1.54

All (10) bond angle outliers are listed below:

Mol	Chain	Res	Type	Atoms	Z	Observed(°)	Ideal(°)
2	A	601	OQ4	C7-C6-N1	3.73	123.08	117.92
2	B	601	OQ4	C18-C19-C17	3.60	91.29	85.68
2	A	601	OQ4	C18-C19-C17	2.64	89.79	85.68
2	B	601	OQ4	C7-C6-N1	2.38	121.22	117.92
2	B	601	OQ4	C32-C31-S1	-2.38	109.58	112.93
2	A	601	OQ4	C15-N3-C16	2.35	117.31	111.75
2	A	601	OQ4	N2-C15-N3	-2.28	125.20	127.70
2	B	601	OQ4	N2-C15-N3	-2.20	125.28	127.70
2	B	601	OQ4	C15-N3-C16	2.14	116.81	111.75
2	B	601	OQ4	C13-C16-N4	-2.09	120.61	123.69

There are no chirality outliers.

All (10) torsion outliers are listed below:

Mol	Chain	Res	Type	Atoms
2	A	601	OQ4	C32-C31-S1-N6
2	A	601	OQ4	C32-C31-S1-O3
2	A	601	OQ4	C32-C31-S1-O4

*Continued on next page...*

*Continued from previous page...*

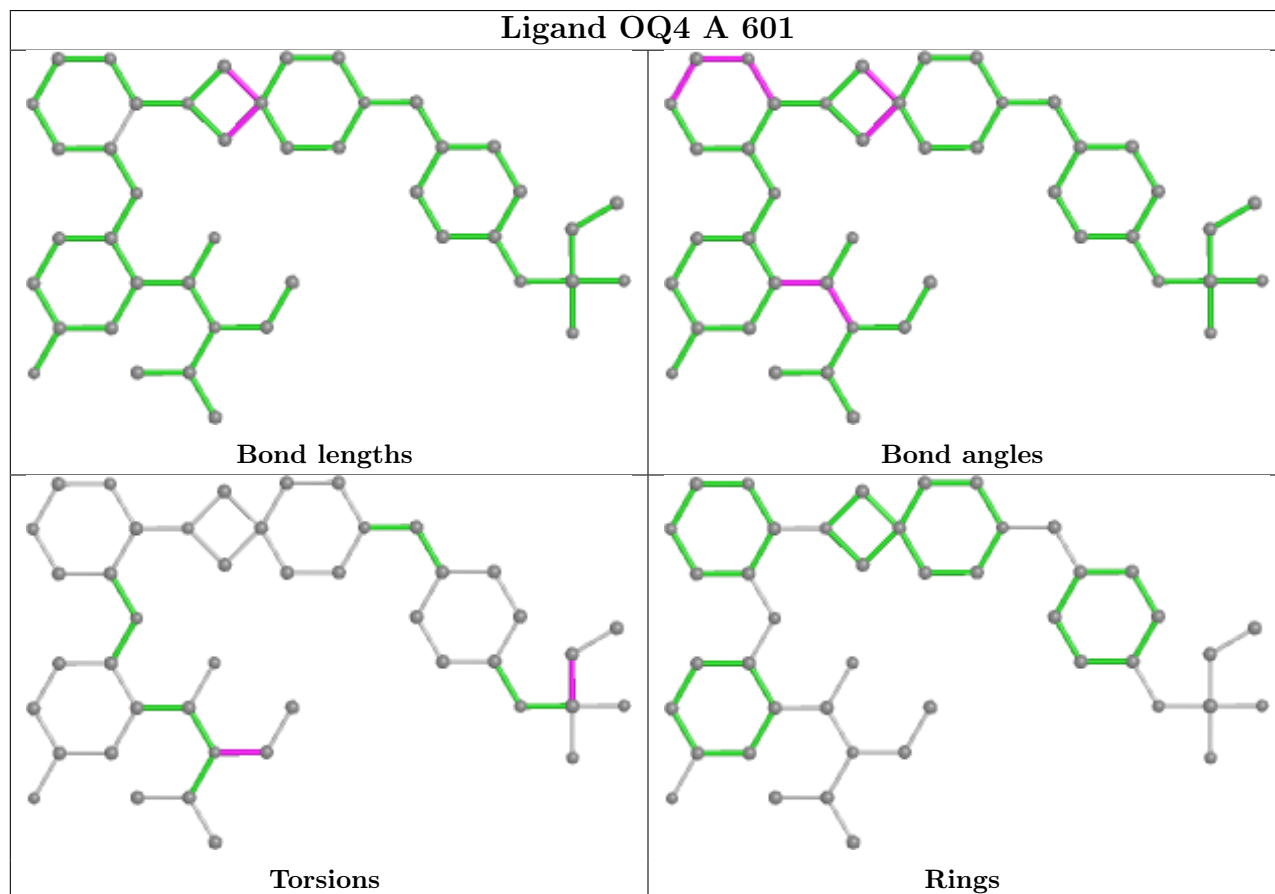
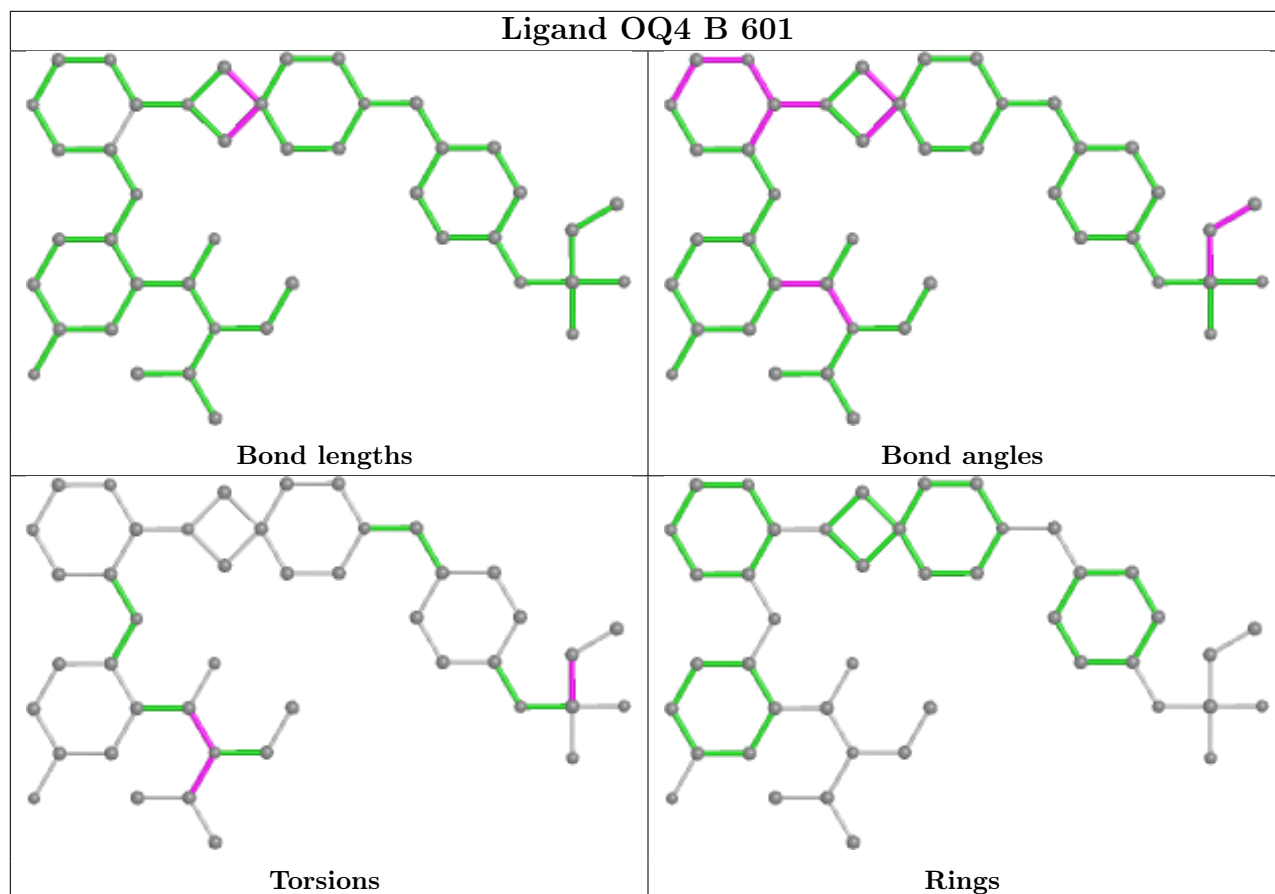
Mol	Chain	Res	Type	Atoms
2	B	601	OQ4	C32-C31-S1-N6
2	B	601	OQ4	C32-C31-S1-O4
2	B	601	OQ4	C1-C2-N1-C4
2	B	601	OQ4	C3-C2-N1-C4
2	B	601	OQ4	C7-C6-N1-C4
2	B	601	OQ4	O1-C6-N1-C4
2	A	601	OQ4	C5-C4-N1-C6

There are no ring outliers.

1 monomer is involved in 1 short contact:

Mol	Chain	Res	Type	Clashes	Symm-Clashes
2	B	601	OQ4	1	0

The following is a two-dimensional graphical depiction of Mogul quality analysis of bond lengths, bond angles, torsion angles, and ring geometry for all instances of the Ligand of Interest. In addition, ligands with molecular weight > 250 and outliers as shown on the validation Tables will also be included. For torsion angles, if less than 5% of the Mogul distribution of torsion angles is within 10 degrees of the torsion angle in question, then that torsion angle is considered an outlier. Any bond that is central to one or more torsion angles identified as an outlier by Mogul will be highlighted in the graph. For rings, the root-mean-square deviation (RMSD) between the ring in question and similar rings identified by Mogul is calculated over all ring torsion angles. If the average RMSD is greater than 60 degrees and the minimal RMSD between the ring in question and any Mogul-identified rings is also greater than 60 degrees, then that ring is considered an outlier. The outliers are highlighted in purple. The color gray indicates Mogul did not find sufficient equivalents in the CSD to analyse the geometry.



## 5.7 Other polymers [i](#)

There are no such residues in this entry.

## 5.8 Polymer linkage issues [i](#)

There are no chain breaks in this entry.

## 6 Fit of model and data

### 6.1 Protein, DNA and RNA chains

In the following table, the column labelled ‘#RSRZ> 2’ contains the number (and percentage) of RSRZ outliers, followed by percent RSRZ outliers for the chain as percentile scores relative to all X-ray entries and entries of similar resolution. The OWAB column contains the minimum, median, 95<sup>th</sup> percentile and maximum values of the occupancy-weighted average B-factor per residue. The column labelled ‘Q< 0.9’ lists the number of (and percentage) of residues with an average occupancy less than 0.9.

Mol	Chain	Analysed	<RSRZ>	#RSRZ>2	OWAB(Å <sup>2</sup> )	Q<0.9
1	A	442/488 (90%)	0.19	9 (2%) 65 73	23, 36, 62, 87	0
1	B	447/488 (91%)	0.30	23 (5%) 28 37	25, 38, 66, 89	0
All	All	889/976 (91%)	0.25	32 (3%) 42 52	23, 37, 65, 89	0

All (32) RSRZ outliers are listed below:

Mol	Chain	Res	Type	RSRZ
1	B	386	GLY	5.1
1	B	111	GLY	4.9
1	B	383	LEU	4.5
1	B	131	ARG	4.0
1	B	577	LEU	3.8
1	B	570	ILE	3.7
1	B	2	GLY	3.7
1	B	382	LEU	3.7
1	A	582	GLN	3.6
1	A	383	LEU	3.6
1	B	450	GLN	3.4
1	B	447	PHE	3.3
1	B	109	GLU	3.2
1	B	381	SER	3.2
1	A	189	ASN	3.1
1	B	6	ALA	3.0
1	A	382	LEU	2.8
1	A	53	VAL	2.5
1	B	569	LYS	2.5
1	A	448	GLU	2.5
1	B	385	ALA	2.5
1	B	249	LEU	2.4
1	B	3	LEU	2.4
1	A	450	GLN	2.2

*Continued on next page...*

*Continued from previous page...*

Mol	Chain	Res	Type	RSRZ
1	B	563	GLU	2.2
1	A	289	LEU	2.2
1	B	355	ARG	2.2
1	B	448	GLU	2.1
1	A	131	ARG	2.1
1	B	378	GLU	2.1
1	B	4	LYS	2.0
1	B	126	TRP	2.0

## 6.2 Non-standard residues in protein, DNA, RNA chains [i](#)

There are no non-standard protein/DNA/RNA residues in this entry.

## 6.3 Carbohydrates [i](#)

There are no monosaccharides in this entry.

## 6.4 Ligands [i](#)

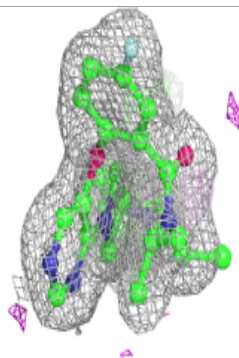
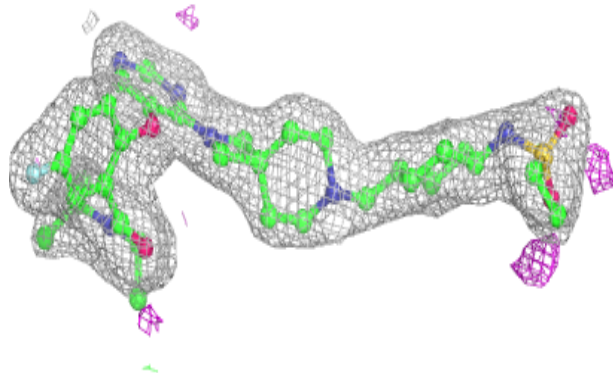
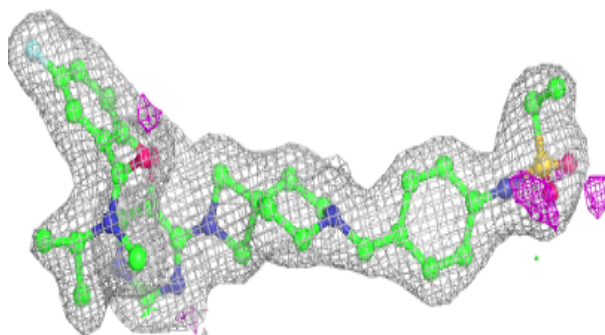
In the following table, the Atoms column lists the number of modelled atoms in the group and the number defined in the chemical component dictionary. The B-factors column lists the minimum, median, 95<sup>th</sup> percentile and maximum values of B factors of atoms in the group. The column labelled 'Q< 0.9' lists the number of atoms with occupancy less than 0.9.

Mol	Type	Chain	Res	Atoms	RSCC	RSR	B-factors(Å <sup>2</sup> )	Q<0.9
3	MG	A	603	1/1	0.75	0.09	38,38,38,38	0
2	OQ4	B	601	44/44	0.95	0.14	26,32,42,44	0
2	OQ4	A	601	44/44	0.96	0.11	18,26,47,50	0
3	MG	A	602	1/1	0.97	0.06	36,36,36,36	0
3	MG	B	603	1/1	0.98	0.04	38,38,38,38	0
3	MG	B	602	1/1	0.99	0.10	32,32,32,32	0

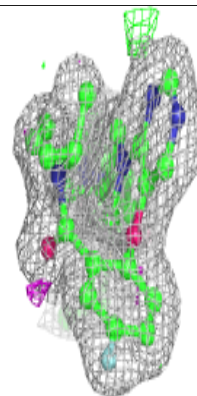
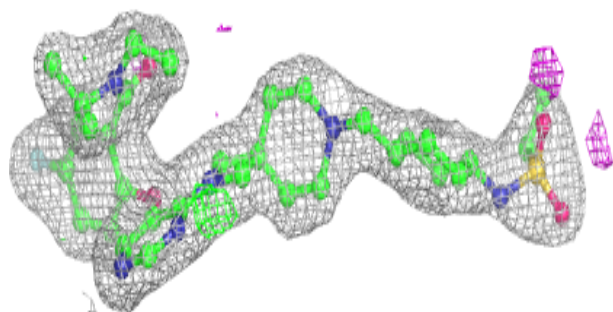
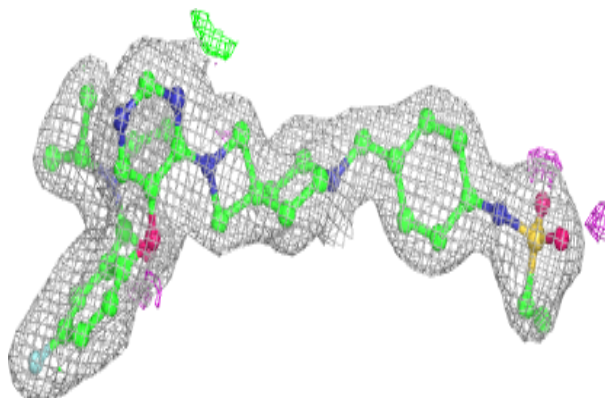
The following is a graphical depiction of the model fit to experimental electron density of all instances of the Ligand of Interest. In addition, ligands with molecular weight > 250 and outliers as shown on the geometry validation Tables will also be included. Each fit is shown from different orientation to approximate a three-dimensional view.

**Electron density around OQ4 B 601:**

$2mF_o-DF_c$  (at 0.7 rmsd) in gray  
 $mF_o-DF_c$  (at 3 rmsd) in purple (negative)  
and green (positive)

**Electron density around OQ4 A 601:**

$2mF_o-DF_c$  (at 0.7 rmsd) in gray  
 $mF_o-DF_c$  (at 3 rmsd) in purple (negative)  
and green (positive)



## 6.5 Other polymers [i](#)

There are no such residues in this entry.