



# Full wwPDB X-ray Structure Validation Report ⓘ

Sep 6, 2023 – 02:04 PM EDT

PDB ID : 7TAK  
Title : Structure of a NAT transporter  
Authors : Weng, J.; Zhou, X.; Ren, Z.; Chen, K.; Zhou, M.  
Deposited on : 2021-12-21  
Resolution : 2.80 Å(reported)

This is a Full wwPDB X-ray Structure Validation Report for a publicly released PDB entry.

We welcome your comments at [validation@mail.wwpdb.org](mailto:validation@mail.wwpdb.org)

A user guide is available at

<https://www.wwpdb.org/validation/2017/XrayValidationReportHelp>

with specific help available everywhere you see the ⓘ symbol.

The types of validation reports are described at

<http://www.wwpdb.org/validation/2017/FAQs#types>.

---

The following versions of software and data (see [references ⓘ](#)) were used in the production of this report:

MolProbity : 4.02b-467  
Mogul : 1.8.5 (274361), CSD as541be (2020)  
Xtriage (Phenix) : 1.13  
EDS : 2.35  
buster-report : 1.1.7 (2018)  
Percentile statistics : 20191225.v01 (using entries in the PDB archive December 25th 2019)  
Refmac : 5.8.0158  
CCP4 : 7.0.044 (Gargrove)  
Ideal geometry (proteins) : Engh & Huber (2001)  
Ideal geometry (DNA, RNA) : Parkinson et al. (1996)  
Validation Pipeline (wwPDB-VP) : 2.35

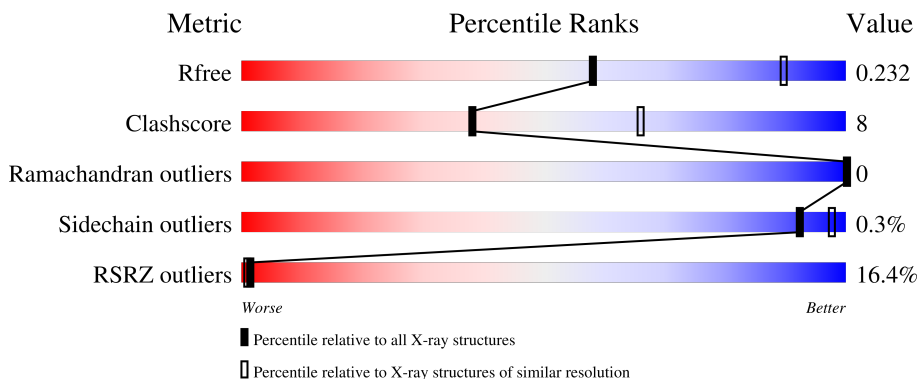
# 1 Overall quality at a glance

The following experimental techniques were used to determine the structure:

*X-RAY DIFFRACTION*

The reported resolution of this entry is 2.80 Å.

Percentile scores (ranging between 0-100) for global validation metrics of the entry are shown in the following graphic. The table shows the number of entries on which the scores are based.



Metric	Whole archive (#Entries)	Similar resolution (#Entries, resolution range(Å))
$R_{free}$	130704	3140 (2.80-2.80)
Clashscore	141614	3569 (2.80-2.80)
Ramachandran outliers	138981	3498 (2.80-2.80)
Sidechain outliers	138945	3500 (2.80-2.80)
RSRZ outliers	127900	3078 (2.80-2.80)

The table below summarises the geometric issues observed across the polymeric chains and their fit to the electron density. The red, orange, yellow and green segments of the lower bar indicate the fraction of residues that contain outliers for  $\geq 3$ , 2, 1 and 0 types of geometric quality criteria respectively. A grey segment represents the fraction of residues that are not modelled. The numeric value for each fraction is indicated below the corresponding segment, with a dot representing fractions  $\leq 5\%$ . The upper red bar (where present) indicates the fraction of residues that have poor fit to the electron density. The numeric value is given above the bar.

Mol	Chain	Length	Quality of chain
1	A	471	
1	B	471	

The following table lists non-polymeric compounds, carbohydrate monomers and non-standard residues in protein, DNA, RNA chains that are outliers for geometric or electron-density-fit criteria:

Mol	Type	Chain	Res	Chirality	Geometry	Clashes	Electron density
2	GUN	A	501	-	-	X	-
2	GUN	B	501	-	-	X	-

## 2 Entry composition [i](#)

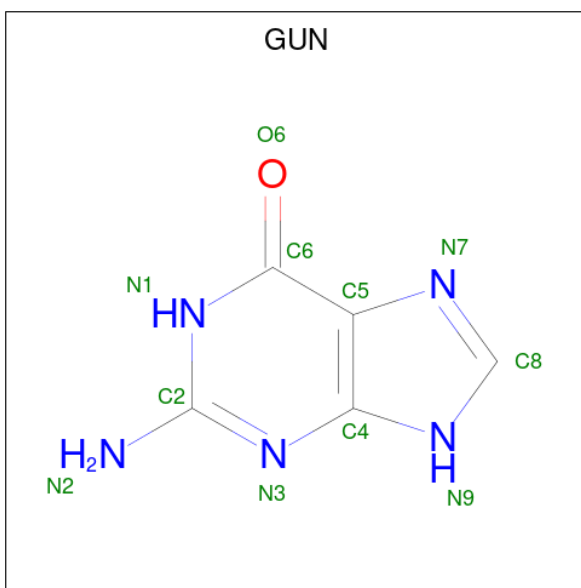
There are 3 unique types of molecules in this entry. The entry contains 7031 atoms, of which 0 are hydrogens and 0 are deuteriums.

In the tables below, the ZeroOcc column contains the number of atoms modelled with zero occupancy, the AltConf column contains the number of residues with at least one atom in alternate conformation and the Trace column contains the number of residues modelled with at most 2 atoms.

- Molecule 1 is a protein called Putative membrane protein PurT.

Mol	Chain	Residues	Atoms					ZeroOcc	AltConf	Trace
			Total	C	N	O	S			
1	A	451	Total	C	N	O	S	0	0	0
			3500	2336	554	587	23			
1	B	450	Total	C	N	O	S	0	0	0
			3492	2331	553	586	22			

- Molecule 2 is GUANINE (three-letter code: GUN) (formula:  $C_5H_5N_5O$ ) (labeled as "Ligand of Interest" by depositor).



Mol	Chain	Residues	Atoms				ZeroOcc	AltConf
			Total	C	N	O		
2	A	1	Total	C	N	O	0	0
			11	5	5	1		
2	B	1	Total	C	N	O	0	0
			11	5	5	1		

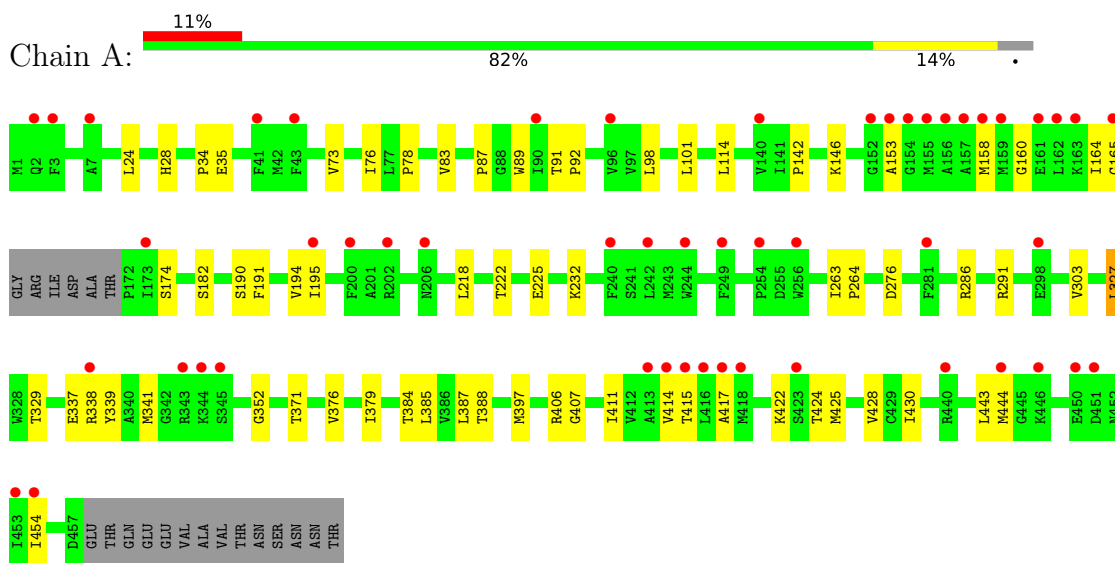
- Molecule 3 is water.

<b>Mol</b>	<b>Chain</b>	<b>Residues</b>	<b>Atoms</b>	<b>ZeroOcc</b>	<b>AltConf</b>
3	A	8	Total O 8 8	0	0
3	B	9	Total O 9 9	0	0

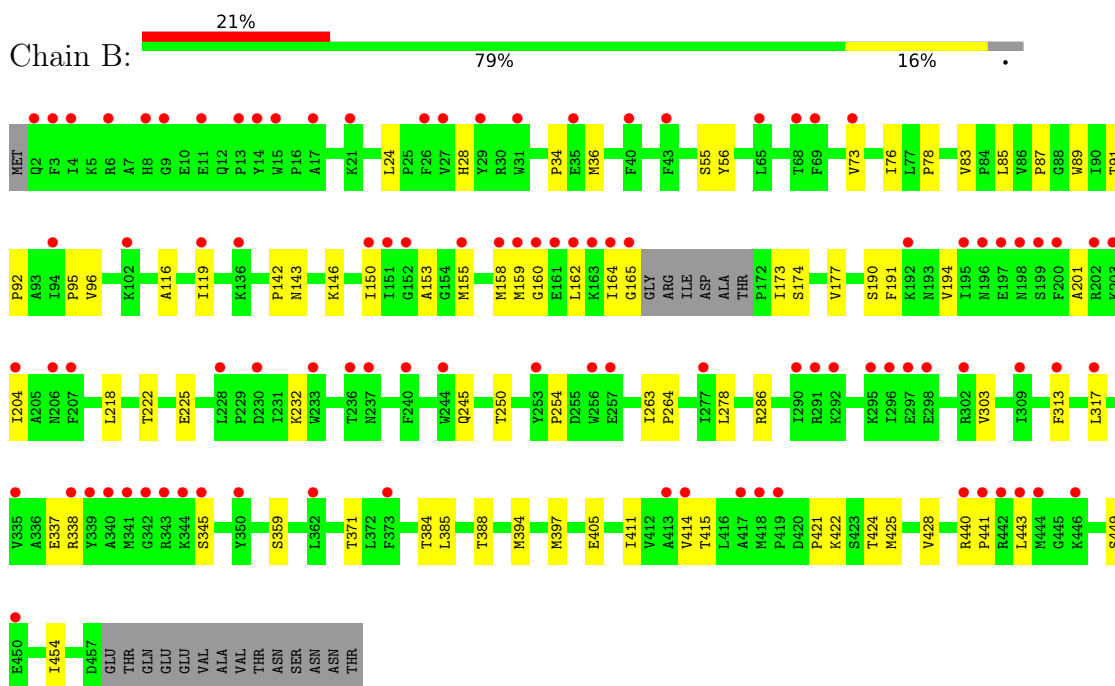
### 3 Residue-property plots

These plots are drawn for all protein, RNA, DNA and oligosaccharide chains in the entry. The first graphic for a chain summarises the proportions of the various outlier classes displayed in the second graphic. The second graphic shows the sequence view annotated by issues in geometry and electron density. Residues are color-coded according to the number of geometric quality criteria for which they contain at least one outlier: green = 0, yellow = 1, orange = 2 and red = 3 or more. A red dot above a residue indicates a poor fit to the electron density ( $RSRZ > 2$ ). Stretches of 2 or more consecutive residues without any outlier are shown as a green connector. Residues present in the sample, but not in the model, are shown in grey.

- Molecule 1: Putative membrane protein PurT



- Molecule 1: Putative membrane protein PurT



## 4 Data and refinement statistics

Property	Value	Source
Space group	P 21 21 2	Depositor
Cell constants a, b, c, $\alpha$ , $\beta$ , $\gamma$	131.71Å 135.99Å 79.17Å 90.00° 90.00° 90.00°	Depositor
Resolution (Å)	41.78 – 2.80 48.03 – 2.80	Depositor EDS
% Data completeness (in resolution range)	98.7 (41.78-2.80) 98.7 (48.03-2.80)	Depositor EDS
$R_{merge}$	0.25	Depositor
$R_{sym}$	(Not available)	Depositor
$\langle I/\sigma(I) \rangle$ <sup>1</sup>	2.21 (at 2.81Å)	Xtrriage
Refinement program	PHENIX dev_1951	Depositor
R, $R_{free}$	0.198 , 0.232 0.198 , 0.232	Depositor DCC
$R_{free}$ test set	1773 reflections (5.01%)	wwPDB-VP
Wilson B-factor (Å <sup>2</sup> )	95.2	Xtrriage
Anisotropy	0.064	Xtrriage
Bulk solvent $k_{sol}$ (e/Å <sup>3</sup> ), $B_{sol}$ (Å <sup>2</sup> )	0.32 , 80.6	EDS
L-test for twinning <sup>2</sup>	$\langle  L  \rangle = 0.51$ , $\langle L^2 \rangle = 0.34$	Xtrriage
Estimated twinning fraction	0.005 for k,h,-l	Xtrriage
$F_o, F_c$ correlation	0.94	EDS
Total number of atoms	7031	wwPDB-VP
Average B, all atoms (Å <sup>2</sup> )	107.0	wwPDB-VP

Xtrriage's analysis on translational NCS is as follows: *The largest off-origin peak in the Patterson function is 3.63% of the height of the origin peak. No significant pseudotranslation is detected.*

<sup>1</sup>Intensities estimated from amplitudes.

<sup>2</sup>Theoretical values of  $\langle |L| \rangle$ ,  $\langle L^2 \rangle$  for acentric reflections are 0.5, 0.333 respectively for untwinned datasets, and 0.375, 0.2 for perfectly twinned datasets.

## 5 Model quality [i](#)

### 5.1 Standard geometry [i](#)

Bond lengths and bond angles in the following residue types are not validated in this section: GUN

The Z score for a bond length (or angle) is the number of standard deviations the observed value is removed from the expected value. A bond length (or angle) with  $|Z| > 5$  is considered an outlier worth inspection. RMSZ is the root-mean-square of all Z scores of the bond lengths (or angles).

Mol	Chain	Bond lengths		Bond angles	
		RMSZ	# Z  >5	RMSZ	# Z  >5
1	A	0.42	0/3600	0.57	2/4906 (0.0%)
1	B	0.38	0/3592	0.53	0/4896
All	All	0.40	0/7192	0.55	2/9802 (0.0%)

There are no bond length outliers.

All (2) bond angle outliers are listed below:

Mol	Chain	Res	Type	Atoms	Z	Observed(°)	Ideal(°)
1	A	327	LEU	CB-CG-CD2	-5.90	100.97	111.00
1	A	327	LEU	CA-CB-CG	5.75	128.52	115.30

There are no chirality outliers.

There are no planarity outliers.

### 5.2 Too-close contacts [i](#)

In the following table, the Non-H and H(model) columns list the number of non-hydrogen atoms and hydrogen atoms in the chain respectively. The H(added) column lists the number of hydrogen atoms added and optimized by MolProbity. The Clashes column lists the number of clashes within the asymmetric unit, whereas Symm-Clashes lists symmetry-related clashes.

Mol	Chain	Non-H	H(model)	H(added)	Clashes	Symm-Clashes
1	A	3500	0	3622	60	0
1	B	3492	0	3610	64	0
2	A	11	0	5	7	0
2	B	11	0	5	5	0
3	A	8	0	0	0	0
3	B	9	0	0	0	0
All	All	7031	0	7242	108	0



The all-atom clashscore is defined as the number of clashes found per 1000 atoms (including hydrogen atoms). The all-atom clashscore for this structure is 8.

All (108) close contacts within the same asymmetric unit are listed below, sorted by their clash magnitude.

Atom-1	Atom-2	Interatomic distance (Å)	Clash overlap (Å)
1:A:195:ILE:HD13	1:A:341:MET:HE3	1.72	0.72
1:A:174:SER:OG	1:A:225:GLU:OE1	2.10	0.68
1:B:411:ILE:O	1:B:415:THR:HG23	1.94	0.68
1:A:24:LEU:H	1:A:28:HIS:HD2	1.42	0.67
1:A:182:SER:HB3	1:A:387:LEU:HD11	1.76	0.66
1:B:24:LEU:H	1:B:28:HIS:HD2	1.43	0.66
1:B:384:THR:OG1	2:B:501:GUN:N7	2.29	0.63
1:B:24:LEU:H	1:B:28:HIS:CD2	2.19	0.60
1:B:232:LYS:HB2	1:B:371:THR:HG21	1.85	0.59
1:A:444:MET:HE2	1:B:204:ILE:HG13	1.85	0.59
1:A:73:VAL:O	1:A:76:ILE:HG12	2.04	0.58
1:B:73:VAL:O	1:B:76:ILE:HG12	2.03	0.58
1:A:417:ALA:HB3	1:B:158:MET:HE1	1.85	0.58
1:A:388:THR:OG1	2:A:501:GUN:O6	2.21	0.58
1:B:96:VAL:CG1	1:B:421:PRO:HG3	2.34	0.57
1:A:218:LEU:O	1:A:222:THR:HG23	2.04	0.57
1:A:422:LYS:HA	1:A:425:MET:HE2	1.87	0.57
1:A:414:VAL:HG22	1:B:158:MET:SD	2.46	0.56
1:A:24:LEU:H	1:A:28:HIS:CD2	2.23	0.56
1:A:411:ILE:O	1:A:415:THR:HG23	2.06	0.56
1:B:388:THR:OG1	2:B:501:GUN:O6	2.24	0.56
1:A:327:LEU:HD13	1:A:329:THR:HA	1.86	0.56
1:A:101:LEU:HD21	1:A:114:LEU:HB2	1.88	0.55
1:A:89:TRP:H	2:A:501:GUN:HN9	1.53	0.55
1:A:444:MET:HA	1:B:201:ALA:HB2	1.88	0.55
1:B:92:PRO:HB3	1:B:153:ALA:O	2.06	0.55
1:B:95:PRO:HG3	1:B:160:GLY:HA3	1.88	0.54
1:B:424:THR:O	1:B:428:VAL:HG23	2.08	0.53
1:B:78:PRO:HG2	1:B:87:PRO:HG3	1.91	0.53
1:A:83:VAL:HG13	1:A:303:VAL:HG22	1.90	0.53
1:B:218:LEU:O	1:B:222:THR:HG23	2.08	0.53
1:A:232:LYS:HB2	1:A:371:THR:HG21	1.91	0.53
1:B:174:SER:OG	1:B:225:GLU:OE1	2.22	0.52
1:A:454:ILE:HB	1:B:190:SER:HB2	1.93	0.51
1:B:95:PRO:HG3	1:B:160:GLY:CA	2.40	0.51
1:A:384:THR:OG1	2:A:501:GUN:N7	2.43	0.50
1:A:454:ILE:O	1:B:286:ARG:NH1	2.43	0.50

*Continued on next page...*

*Continued from previous page...*

Atom-1	Atom-2	Interatomic distance (Å)	Clash overlap (Å)
1:A:92:PRO:HB3	1:A:153:ALA:O	2.11	0.50
1:A:160:GLY:O	1:A:164:ILE:HG23	2.12	0.50
1:A:78:PRO:HG2	1:A:87:PRO:HB3	1.94	0.50
1:B:440:ARG:HB3	1:B:441:PRO:HD3	1.93	0.49
1:A:337:GLU:HG2	1:B:454:ILE:HG13	1.94	0.49
1:A:397:MET:SD	1:B:397:MET:HG2	2.52	0.49
1:B:164:ILE:HG13	1:B:165:GLY:N	2.27	0.49
1:A:407:GLY:HA2	1:B:394:MET:SD	2.52	0.49
1:B:441:PRO:HB2	1:B:443:LEU:HG	1.96	0.48
1:A:424:THR:O	1:A:428:VAL:HG23	2.13	0.47
1:A:158:MET:HE1	1:B:414:VAL:HA	1.95	0.47
1:A:91:THR:HG22	1:A:385:LEU:HD23	1.96	0.47
1:B:83:VAL:HG12	1:B:85:LEU:H	1.79	0.47
1:B:78:PRO:O	1:B:83:VAL:N	2.46	0.47
1:B:313:PHE:CE1	1:B:317:LEU:HD12	2.50	0.47
1:A:276:ASP:OD2	2:A:501:GUN:N2	2.49	0.46
1:B:91:THR:HG22	1:B:385:LEU:HD23	1.98	0.46
1:A:35:GLU:OE2	1:A:338:ARG:NH1	2.49	0.46
1:B:142:PRO:O	1:B:146:LYS:HG3	2.15	0.45
1:A:443:LEU:O	1:A:444:MET:HB2	2.15	0.45
1:A:78:PRO:HB3	1:A:83:VAL:HB	1.98	0.45
1:A:286:ARG:NH1	1:B:454:ILE:O	2.48	0.45
1:A:142:PRO:O	1:A:146:LYS:HG3	2.16	0.45
1:A:263:ILE:HB	1:A:264:PRO:HD3	1.99	0.45
1:A:91:THR:OG1	2:A:501:GUN:N3	2.50	0.44
1:B:36:MET:HA	1:B:359:SER:OG	2.16	0.44
1:B:422:LYS:HA	1:B:425:MET:HE2	1.99	0.44
1:B:91:THR:HB	1:B:92:PRO:HD3	1.99	0.44
1:B:96:VAL:HG12	1:B:421:PRO:HG3	1.99	0.44
1:A:291:ARG:HG3	1:A:339:TYR:CZ	2.52	0.44
1:A:397:MET:HG2	1:B:397:MET:SD	2.57	0.44
1:B:173:ILE:O	1:B:177:VAL:HG13	2.17	0.44
1:B:34:PRO:HG2	1:B:338:ARG:HH21	1.83	0.43
1:B:425:MET:HE2	1:B:425:MET:HB2	1.89	0.43
1:A:89:TRP:O	2:A:501:GUN:N3	2.51	0.43
1:A:174:SER:HB3	1:A:379:ILE:HD13	2.00	0.43
1:A:406:ARG:HG3	1:B:397:MET:HE3	2.00	0.43
1:B:91:THR:OG1	2:B:501:GUN:C4	2.66	0.43
1:B:116:ALA:HB2	1:B:254:PRO:HG3	2.00	0.43
1:A:190:SER:HB2	1:B:454:ILE:HB	2.00	0.43
1:B:146:LYS:O	1:B:150:ILE:HG13	2.19	0.43

*Continued on next page...*

Continued from previous page...

Atom-1	Atom-2	Interatomic distance (Å)	Clash overlap (Å)
1:B:191:PHE:O	1:B:194:VAL:HG23	2.19	0.42
1:A:78:PRO:HG2	1:A:87:PRO:HG3	2.01	0.42
1:B:119:ILE:HD12	1:B:119:ILE:HA	1.80	0.42
1:A:291:ARG:HG3	1:A:339:TYR:CE1	2.55	0.42
1:A:387:LEU:HD23	1:A:387:LEU:HA	1.87	0.42
1:A:430:ILE:HD13	1:B:177:VAL:HG12	2.01	0.42
1:B:83:VAL:HG13	1:B:303:VAL:HG22	2.02	0.42
1:A:191:PHE:O	1:A:194:VAL:HG23	2.19	0.42
1:B:78:PRO:HG2	1:B:87:PRO:CG	2.50	0.42
1:A:34:PRO:HG2	1:A:338:ARG:NH2	2.35	0.41
1:A:164:ILE:HG13	1:A:165:GLY:N	2.35	0.41
1:B:155:MET:O	1:B:159:MET:HG2	2.20	0.41
1:B:55:SER:HB2	1:B:56:TYR:CD2	2.55	0.41
1:B:263:ILE:HB	1:B:264:PRO:HD3	2.02	0.41
1:B:158:MET:O	1:B:162:LEU:HD13	2.20	0.41
1:B:264:PRO:HG2	1:B:422:LYS:HE2	2.03	0.41
1:A:35:GLU:HG2	1:A:352:GLY:O	2.21	0.41
1:A:91:THR:HG1	2:A:501:GUN:C2	2.34	0.41
1:A:376:VAL:HG22	1:A:379:ILE:HD12	2.02	0.41
1:A:454:ILE:HG13	1:B:337:GLU:HG2	2.01	0.41
1:B:89:TRP:H	2:B:501:GUN:HN9	1.69	0.41
1:B:159:MET:HG2	1:B:159:MET:H	1.73	0.41
1:B:245:GLN:HA	1:B:250:THR:HG21	2.02	0.41
1:A:98:LEU:HD23	1:A:98:LEU:HA	1.90	0.41
1:A:34:PRO:HG2	1:A:338:ARG:HH21	1.86	0.40
1:B:143:ASN:HB3	1:B:405:GLU:OE2	2.22	0.40
1:A:35:GLU:OE1	1:A:338:ARG:NH1	2.55	0.40
1:B:91:THR:HG1	2:B:501:GUN:C2	2.35	0.40
1:A:78:PRO:HG2	1:A:87:PRO:CG	2.52	0.40
1:B:146:LYS:HB3	1:B:278:LEU:HD13	2.02	0.40

There are no symmetry-related clashes.

## 5.3 Torsion angles [i](#)

### 5.3.1 Protein backbone [i](#)

In the following table, the Percentiles column shows the percent Ramachandran outliers of the chain as a percentile score with respect to all X-ray entries followed by that with respect to entries of similar resolution.

The Analysed column shows the number of residues for which the backbone conformation was analysed, and the total number of residues.

Mol	Chain	Analysed	Favoured	Allowed	Outliers	Percentiles	
1	A	447/471 (95%)	432 (97%)	15 (3%)	0	100	100
1	B	446/471 (95%)	435 (98%)	11 (2%)	0	100	100
All	All	893/942 (95%)	867 (97%)	26 (3%)	0	100	100

There are no Ramachandran outliers to report.

### 5.3.2 Protein sidechains [i](#)

In the following table, the Percentiles column shows the percent sidechain outliers of the chain as a percentile score with respect to all X-ray entries followed by that with respect to entries of similar resolution.

The Analysed column shows the number of residues for which the sidechain conformation was analysed, and the total number of residues.

Mol	Chain	Analysed	Rotameric	Outliers	Percentiles	
1	A	368/385 (96%)	368 (100%)	0	100	100
1	B	367/385 (95%)	365 (100%)	2 (0%)	88	96
All	All	735/770 (96%)	733 (100%)	2 (0%)	92	98

All (2) residues with a non-rotameric sidechain are listed below:

Mol	Chain	Res	Type
1	B	345	SER
1	B	449	SER

Sometimes sidechains can be flipped to improve hydrogen bonding and reduce clashes. All (2) such sidechains are listed below:

Mol	Chain	Res	Type
1	A	28	HIS
1	B	28	HIS

### 5.3.3 RNA [i](#)

There are no RNA molecules in this entry.

## 5.4 Non-standard residues in protein, DNA, RNA chains [i](#)

There are no non-standard protein/DNA/RNA residues in this entry.

## 5.5 Carbohydrates [i](#)

There are no monosaccharides in this entry.

## 5.6 Ligand geometry [i](#)

2 ligands are modelled in this entry.

In the following table, the Counts columns list the number of bonds (or angles) for which Mogul statistics could be retrieved, the number of bonds (or angles) that are observed in the model and the number of bonds (or angles) that are defined in the Chemical Component Dictionary. The Link column lists molecule types, if any, to which the group is linked. The Z score for a bond length (or angle) is the number of standard deviations the observed value is removed from the expected value. A bond length (or angle) with  $|Z| > 2$  is considered an outlier worth inspection. RMSZ is the root-mean-square of all Z scores of the bond lengths (or angles).

Mol	Type	Chain	Res	Link	Bond lengths			Bond angles		
					Counts	RMSZ	# Z  > 2	Counts	RMSZ	# Z  > 2
2	GUN	A	501	-	7,12,12	1.36	0	8,17,17	1.63	2 (25%)
2	GUN	B	501	-	7,12,12	1.31	0	8,17,17	1.70	2 (25%)

In the following table, the Chirals column lists the number of chiral outliers, the number of chiral centers analysed, the number of these observed in the model and the number defined in the Chemical Component Dictionary. Similar counts are reported in the Torsion and Rings columns. '-' means no outliers of that kind were identified.

Mol	Type	Chain	Res	Link	Chirals	Torsions	Rings
2	GUN	A	501	-	-	-	0/2/2/2
2	GUN	B	501	-	-	-	0/2/2/2

There are no bond length outliers.

All (4) bond angle outliers are listed below:

Mol	Chain	Res	Type	Atoms	Z	Observed(°)	Ideal(°)
2	B	501	GUN	C8-N7-C5	3.20	109.08	102.99
2	A	501	GUN	C8-N7-C5	2.87	108.47	102.99
2	A	501	GUN	C5-C6-N1	2.61	118.56	113.95
2	B	501	GUN	C5-C6-N1	2.53	118.42	113.95

There are no chirality outliers.

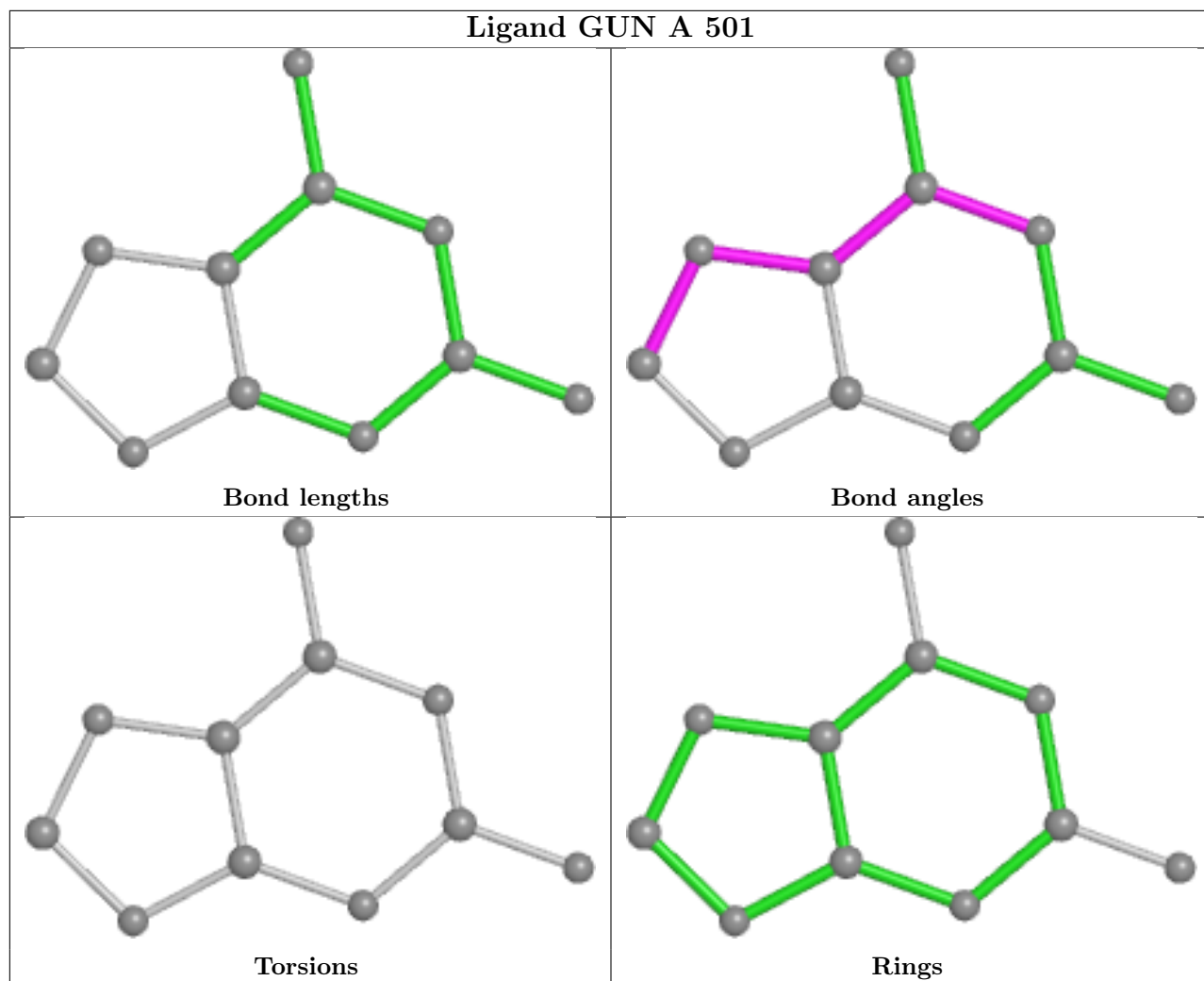
There are no torsion outliers.

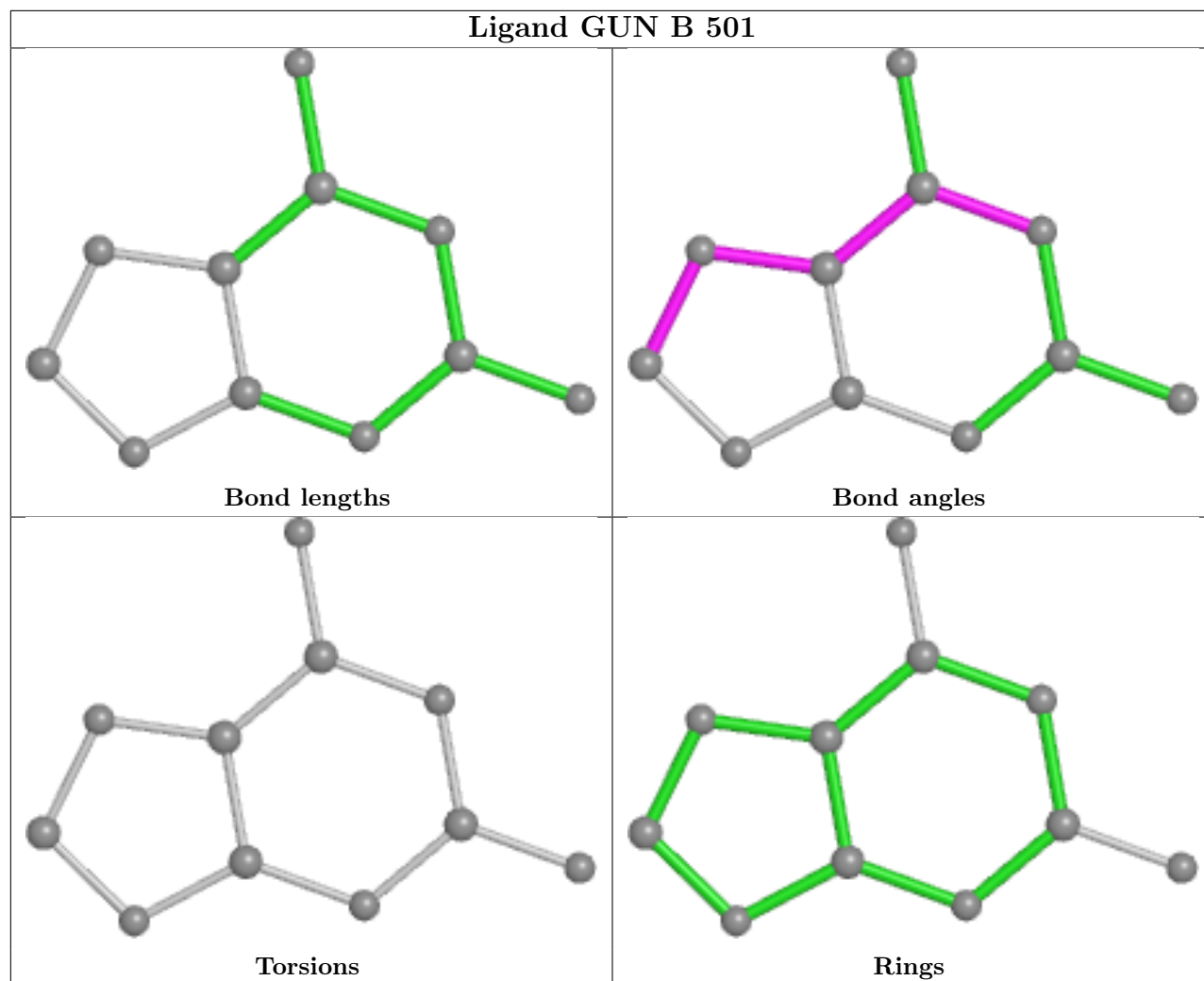
There are no ring outliers.

2 monomers are involved in 12 short contacts:

Mol	Chain	Res	Type	Clashes	Symm-Clashes
2	A	501	GUN	7	0
2	B	501	GUN	5	0

The following is a two-dimensional graphical depiction of Mogul quality analysis of bond lengths, bond angles, torsion angles, and ring geometry for all instances of the Ligand of Interest. In addition, ligands with molecular weight > 250 and outliers as shown on the validation Tables will also be included. For torsion angles, if less than 5% of the Mogul distribution of torsion angles is within 10 degrees of the torsion angle in question, then that torsion angle is considered an outlier. Any bond that is central to one or more torsion angles identified as an outlier by Mogul will be highlighted in the graph. For rings, the root-mean-square deviation (RMSD) between the ring in question and similar rings identified by Mogul is calculated over all ring torsion angles. If the average RMSD is greater than 60 degrees and the minimal RMSD between the ring in question and any Mogul-identified rings is also greater than 60 degrees, then that ring is considered an outlier. The outliers are highlighted in purple. The color gray indicates Mogul did not find sufficient equivalents in the CSD to analyse the geometry.





## 5.7 Other polymers [i](#)

There are no such residues in this entry.

## 5.8 Polymer linkage issues [i](#)

There are no chain breaks in this entry.



## 6 Fit of model and data

### 6.1 Protein, DNA and RNA chains

In the following table, the column labelled ‘#RSRZ > 2’ contains the number (and percentage) of RSRZ outliers, followed by percent RSRZ outliers for the chain as percentile scores relative to all X-ray entries and entries of similar resolution. The OWAB column contains the minimum, median, 95<sup>th</sup> percentile and maximum values of the occupancy-weighted average B-factor per residue. The column labelled ‘Q < 0.9’ lists the number of (and percentage) of residues with an average occupancy less than 0.9.

Mol	Chain	Analysed	<RSRZ>	#RSRZ>2	OWAB(Å <sup>2</sup> )	Q<0.9
1	A	451/471 (95%)	0.78	51 (11%) 5 3	63, 97, 150, 202	0
1	B	450/471 (95%)	1.13	97 (21%) 0 0	66, 103, 167, 207	0
All	All	901/942 (95%)	0.96	148 (16%) 1 1	63, 100, 160, 207	0

All (148) RSRZ outliers are listed below:

Mol	Chain	Res	Type	RSRZ
1	B	165	GLY	12.1
1	B	3	PHE	8.9
1	A	165	GLY	8.4
1	A	343	ARG	7.2
1	B	195	ILE	6.8
1	B	163	LYS	6.7
1	B	292	LYS	6.1
1	B	202	ARG	5.9
1	A	3	PHE	5.8
1	B	203	LYS	5.5
1	B	256	TRP	5.2
1	B	2	GLN	5.1
1	B	297	GLU	5.0
1	A	256	TRP	4.9
1	B	199	SER	4.9
1	B	442	ARG	4.7
1	B	341	MET	4.4
1	A	163	LYS	4.3
1	A	200	PHE	4.3
1	B	340	ALA	4.3
1	B	31	TRP	4.2
1	B	15	TRP	4.1
1	B	40	PHE	4.1
1	B	27	VAL	4.1

*Continued on next page...*

*Continued from previous page...*

<b>Mol</b>	<b>Chain</b>	<b>Res</b>	<b>Type</b>	<b>RSRZ</b>
1	B	343	ARG	4.0
1	A	453	ILE	4.0
1	B	313	PHE	3.9
1	A	157	ALA	3.9
1	A	244	TRP	3.9
1	B	198	ASN	3.9
1	B	443	LEU	3.9
1	A	344	LYS	3.9
1	B	4	ILE	3.9
1	B	206	ASN	3.8
1	B	158	MET	3.8
1	B	345	SER	3.7
1	A	159	MET	3.7
1	B	8	HIS	3.7
1	B	159	MET	3.6
1	B	164	ILE	3.5
1	B	207	PHE	3.5
1	A	158	MET	3.5
1	B	9	GLY	3.5
1	B	298	GLU	3.5
1	B	192	LYS	3.5
1	B	295	LYS	3.4
1	A	450	GLU	3.4
1	B	317	LEU	3.4
1	B	21	LYS	3.3
1	B	446	LYS	3.3
1	A	454	ILE	3.3
1	A	156	ALA	3.3
1	A	418	MET	3.2
1	A	281	PHE	3.2
1	B	13	PRO	3.2
1	B	342	GLY	3.1
1	A	41	PHE	3.1
1	B	119	ILE	3.1
1	A	242	LEU	3.0
1	A	173	ILE	2.9
1	B	240	PHE	2.9
1	B	450	GLU	2.9
1	B	440	ARG	2.9
1	B	233	TRP	2.9
1	A	206	ASN	2.9
1	A	154	GLY	2.8

*Continued on next page...*

*Continued from previous page...*

<b>Mol</b>	<b>Chain</b>	<b>Res</b>	<b>Type</b>	<b>RSRZ</b>
1	B	162	LEU	2.8
1	B	29	TYR	2.8
1	B	418	MET	2.8
1	B	228	LEU	2.8
1	A	423	SER	2.8
1	B	373	PHE	2.8
1	B	43	PHE	2.7
1	A	440	ARG	2.7
1	A	195	ILE	2.7
1	B	197	GLU	2.7
1	B	14	TYR	2.7
1	A	152	GLY	2.7
1	A	43	PHE	2.7
1	A	446	LYS	2.7
1	B	338	ARG	2.7
1	A	249	PHE	2.7
1	B	73	VAL	2.7
1	A	444	MET	2.6
1	B	35	GLU	2.6
1	B	26	PHE	2.6
1	B	6	ARG	2.6
1	B	65	LEU	2.5
1	B	151	ILE	2.5
1	B	339	TYR	2.5
1	B	200	PHE	2.5
1	A	7	ALA	2.5
1	B	196	ASN	2.5
1	A	202	ARG	2.5
1	A	161	GLU	2.5
1	B	335	VAL	2.5
1	A	155	MET	2.5
1	B	230	ASP	2.4
1	A	254	PRO	2.4
1	B	237	ASN	2.4
1	B	152	GLY	2.4
1	B	69	PHE	2.4
1	A	240	PHE	2.4
1	B	150	ILE	2.3
1	B	414	VAL	2.3
1	B	102	LYS	2.3
1	A	415	THR	2.3
1	B	68	THR	2.3

*Continued on next page...*

*Continued from previous page...*

<b>Mol</b>	<b>Chain</b>	<b>Res</b>	<b>Type</b>	<b>RSRZ</b>
1	B	296	ILE	2.3
1	B	290	ILE	2.3
1	B	277	ILE	2.3
1	B	244	TRP	2.2
1	A	413	ALA	2.2
1	B	344	LYS	2.2
1	B	362	LEU	2.2
1	B	444	MET	2.2
1	B	161	GLU	2.2
1	B	441	PRO	2.2
1	B	257	GLU	2.2
1	A	417	ALA	2.2
1	A	298	GLU	2.1
1	B	11	GLU	2.1
1	A	90	ILE	2.1
1	A	414	VAL	2.1
1	B	160	GLY	2.1
1	B	291	ARG	2.1
1	B	413	ALA	2.1
1	B	417	ALA	2.1
1	A	345	SER	2.1
1	A	416	LEU	2.1
1	B	136	LYS	2.1
1	B	17	ALA	2.1
1	B	155	MET	2.1
1	A	162	LEU	2.1
1	B	253	TYR	2.1
1	B	350	TYR	2.1
1	A	153	ALA	2.1
1	A	338	ARG	2.1
1	A	96	VAL	2.1
1	A	2	GLN	2.1
1	B	204	ILE	2.1
1	B	309	ILE	2.1
1	B	419	PRO	2.1
1	B	302	ARG	2.1
1	B	94	ILE	2.0
1	A	451	ASP	2.0
1	B	236	THR	2.0
1	A	140	VAL	2.0

## 6.2 Non-standard residues in protein, DNA, RNA chains [i](#)

There are no non-standard protein/DNA/RNA residues in this entry.

## 6.3 Carbohydrates [i](#)

There are no monosaccharides in this entry.

## 6.4 Ligands [i](#)

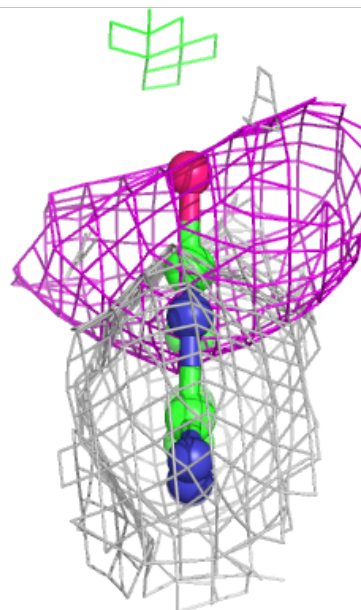
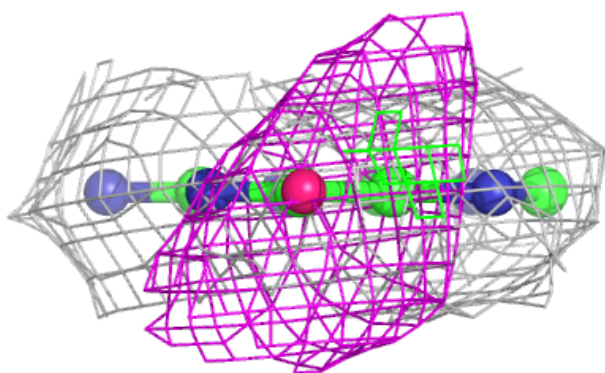
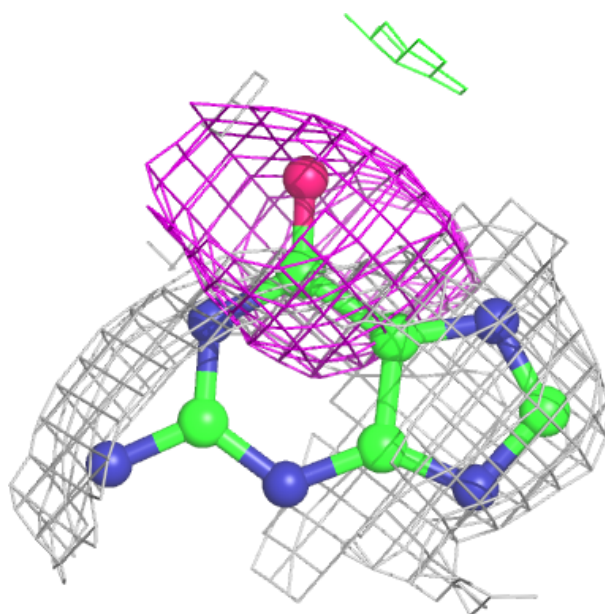
In the following table, the Atoms column lists the number of modelled atoms in the group and the number defined in the chemical component dictionary. The B-factors column lists the minimum, median, 95<sup>th</sup> percentile and maximum values of B factors of atoms in the group. The column labelled 'Q< 0.9' lists the number of atoms with occupancy less than 0.9.

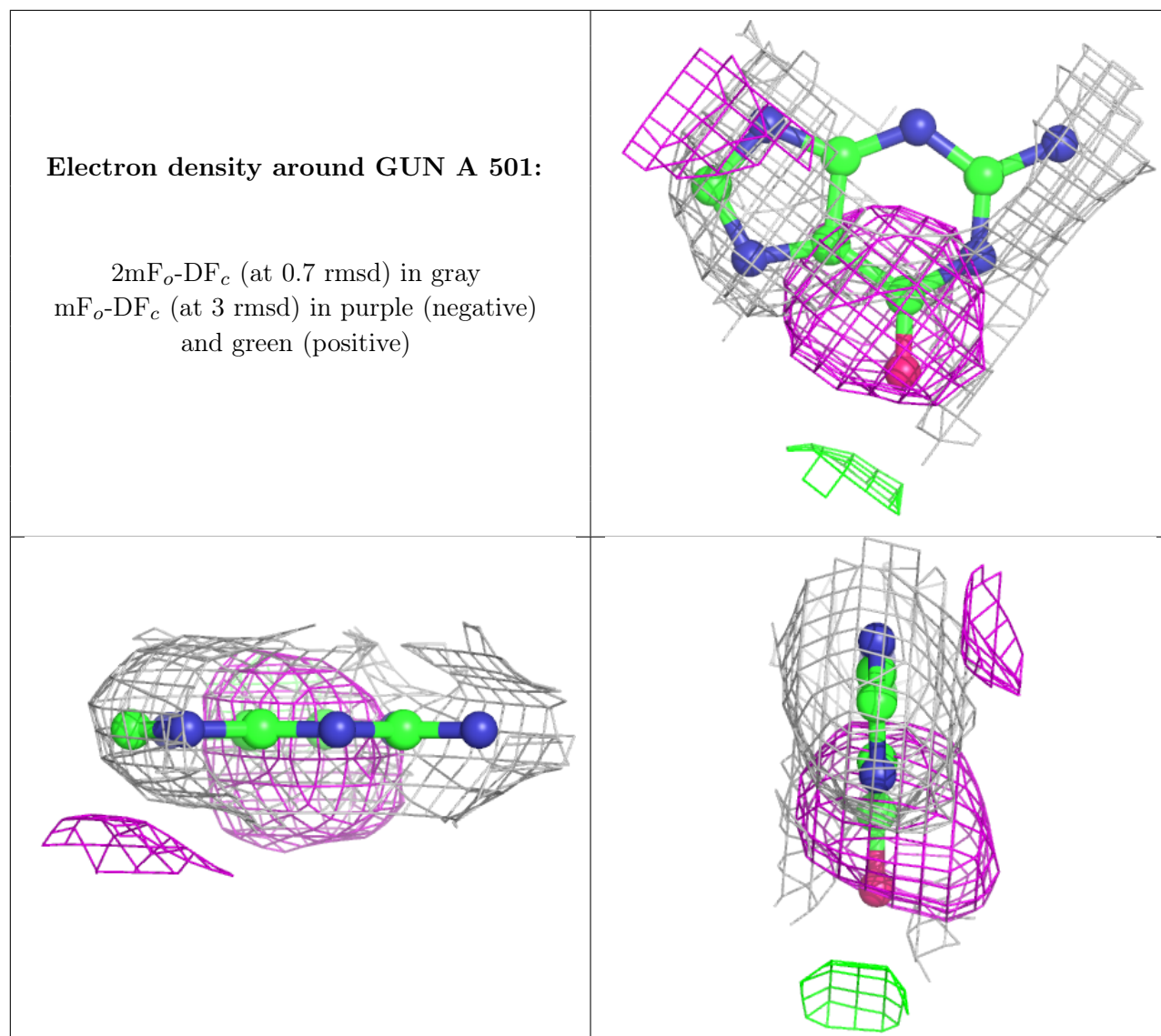
Mol	Type	Chain	Res	Atoms	RSCC	RSR	B-factors(Å <sup>2</sup> )	Q<0.9
2	GUN	B	501	11/11	0.81	0.26	99,106,116,121	0
2	GUN	A	501	11/11	0.85	0.28	91,95,114,126	0

The following is a graphical depiction of the model fit to experimental electron density of all instances of the Ligand of Interest. In addition, ligands with molecular weight > 250 and outliers as shown on the geometry validation Tables will also be included. Each fit is shown from different orientation to approximate a three-dimensional view.

**Electron density around GUN B 501:**

$2mF_o-DF_c$  (at 0.7 rmsd) in gray  
 $mF_o-DF_c$  (at 3 rmsd) in purple (negative)  
and green (positive)





## 6.5 Other polymers [\(i\)](#)

There are no such residues in this entry.