



Full wwPDB EM Validation Report ⓘ

May 25, 2024 – 09:31 AM EDT

PDB ID : 7RKH
EMDB ID : EMD-24497
Title : Yeast CTP Synthase (URA8) tetramer bound to ATP/UTP at neutral pH
Authors : Hansen, J.M.; Lynch, E.M.; Farrell, D.P.; DiMaio, F.; Quispe, J.; Kollman, J.M.
Deposited on : 2021-07-22
Resolution : 2.80 Å(reported)

This is a Full wwPDB EM Validation Report for a publicly released PDB entry.

We welcome your comments at validation@mail.wwpdb.org

A user guide is available at

<https://www.wwpdb.org/validation/2017/EMValidationReportHelp>

with specific help available everywhere you see the ⓘ symbol.

The types of validation reports are described at

<http://www.wwpdb.org/validation/2017/FAQs#types>.

The following versions of software and data (see [references ⓘ](#)) were used in the production of this report:

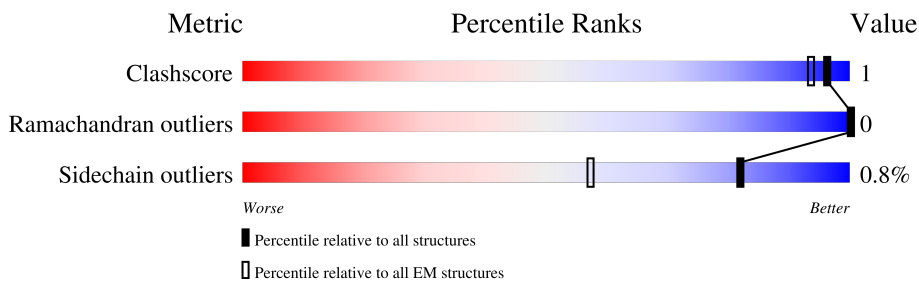
EMDB validation analysis : 0.0.1.dev92
Mogul : 1.8.5 (274361), CSD as541be (2020)
MolProbity : 4.02b-467
buster-report : 1.1.7 (2018)
Percentile statistics : 20191225.v01 (using entries in the PDB archive December 25th 2019)
MapQ : 1.9.13
Ideal geometry (proteins) : Engh & Huber (2001)
Ideal geometry (DNA, RNA) : Parkinson et al. (1996)
Validation Pipeline (wwPDB-VP) : 2.36.2

1 Overall quality at a glance i

The following experimental techniques were used to determine the structure:
ELECTRON MICROSCOPY

The reported resolution of this entry is 2.80 Å.

Percentile scores (ranging between 0-100) for global validation metrics of the entry are shown in the following graphic. The table shows the number of entries on which the scores are based.



Metric	Whole archive (#Entries)	EM structures (#Entries)
Clashscore	158937	4297
Ramachandran outliers	154571	4023
Sidechain outliers	154315	3826

The table below summarises the geometric issues observed across the polymeric chains and their fit to the map. The red, orange, yellow and green segments of the bar indicate the fraction of residues that contain outliers for ≥ 3 , 2, 1 and 0 types of geometric quality criteria respectively. A grey segment represents the fraction of residues that are not modelled. The numeric value for each fraction is indicated below the corresponding segment, with a dot representing fractions $\leq 5\%$. The upper red bar (where present) indicates the fraction of residues that have poor fit to the EM map (all-atom inclusion $< 40\%$). The numeric value is given above the bar.

Mol	Chain	Length	Quality of chain
1	A	559	<div style="display: flex; justify-content: space-between; align-items: center;"> 25% <div style="width: 100%; height: 15px; background: linear-gradient(to right, red 25%, orange 25%, yellow 25%, green 25%, grey 25%);"></div> 94% 5% </div>
1	B	559	<div style="display: flex; justify-content: space-between; align-items: center;"> 25% <div style="width: 100%; height: 15px; background: linear-gradient(to right, red 25%, orange 25%, yellow 25%, green 25%, grey 25%);"></div> 94% 5% </div>
1	C	559	<div style="display: flex; justify-content: space-between; align-items: center;"> 25% <div style="width: 100%; height: 15px; background: linear-gradient(to right, red 25%, orange 25%, yellow 25%, green 25%, grey 25%);"></div> 95% 5% </div>
1	D	559	<div style="display: flex; justify-content: space-between; align-items: center;"> 25% <div style="width: 100%; height: 15px; background: linear-gradient(to right, red 25%, orange 25%, yellow 25%, green 25%, grey 25%);"></div> 95% 5% </div>

2 Entry composition [i](#)

There are 4 unique types of molecules in this entry. The entry contains 35428 atoms, of which 17640 are hydrogens and 0 are deuteriums.

In the tables below, the AltConf column contains the number of residues with at least one atom in alternate conformation and the Trace column contains the number of residues modelled with at most 2 atoms.

- Molecule 1 is a protein called CTP synthase.

Mol	Chain	Residues	Atoms						AltConf	Trace
			Total	C	H	N	O	S		
1	D	559	8776	2775	4391	757	833	20	0	0
1	A	559	8776	2775	4391	757	833	20	0	0
1	B	559	8776	2775	4391	757	833	20	0	0
1	C	559	8776	2775	4391	757	833	20	0	0

There are 48 discrepancies between the modelled and reference sequences:

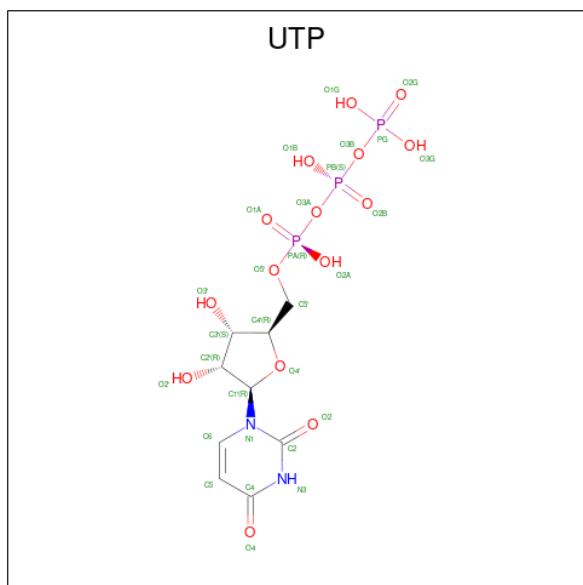
Chain	Residue	Modelled	Actual	Comment	Reference
D	?	-	TYR	deletion	UNP A0A6A5PYW3
D	?	-	MET	deletion	UNP A0A6A5PYW3
D	?	-	PRO	deletion	UNP A0A6A5PYW3
D	?	-	GLU	deletion	UNP A0A6A5PYW3
D	?	-	ILE	deletion	UNP A0A6A5PYW3
D	?	-	ASP	deletion	UNP A0A6A5PYW3
D	?	-	LYS	deletion	UNP A0A6A5PYW3
D	?	-	GLU	deletion	UNP A0A6A5PYW3
D	?	-	HIS	deletion	UNP A0A6A5PYW3
D	?	-	MET	deletion	UNP A0A6A5PYW3
D	?	-	GLY	deletion	UNP A0A6A5PYW3
D	?	-	GLY	deletion	UNP A0A6A5PYW3
A	?	-	TYR	deletion	UNP A0A6A5PYW3
A	?	-	MET	deletion	UNP A0A6A5PYW3
A	?	-	PRO	deletion	UNP A0A6A5PYW3
A	?	-	GLU	deletion	UNP A0A6A5PYW3
A	?	-	ILE	deletion	UNP A0A6A5PYW3
A	?	-	ASP	deletion	UNP A0A6A5PYW3
A	?	-	LYS	deletion	UNP A0A6A5PYW3
A	?	-	GLU	deletion	UNP A0A6A5PYW3
A	?	-	HIS	deletion	UNP A0A6A5PYW3
A	?	-	MET	deletion	UNP A0A6A5PYW3

Continued on next page...

Continued from previous page...

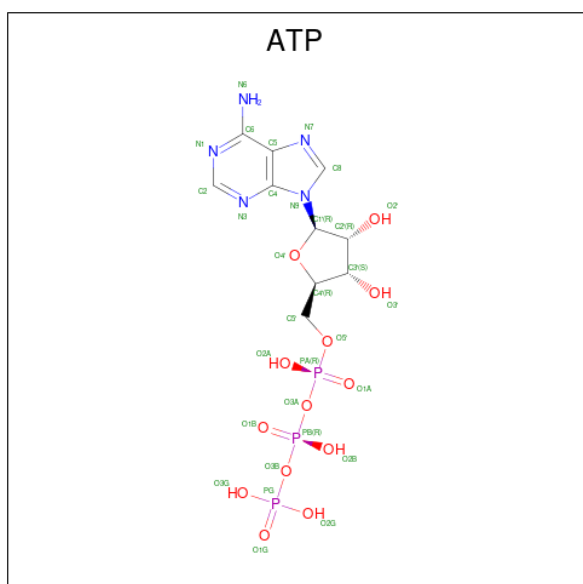
Chain	Residue	Modelled	Actual	Comment	Reference
A	?	-	GLY	deletion	UNP A0A6A5PYW3
A	?	-	GLY	deletion	UNP A0A6A5PYW3
B	?	-	TYR	deletion	UNP A0A6A5PYW3
B	?	-	MET	deletion	UNP A0A6A5PYW3
B	?	-	PRO	deletion	UNP A0A6A5PYW3
B	?	-	GLU	deletion	UNP A0A6A5PYW3
B	?	-	ILE	deletion	UNP A0A6A5PYW3
B	?	-	ASP	deletion	UNP A0A6A5PYW3
B	?	-	LYS	deletion	UNP A0A6A5PYW3
B	?	-	GLU	deletion	UNP A0A6A5PYW3
B	?	-	HIS	deletion	UNP A0A6A5PYW3
B	?	-	MET	deletion	UNP A0A6A5PYW3
B	?	-	GLY	deletion	UNP A0A6A5PYW3
B	?	-	GLY	deletion	UNP A0A6A5PYW3
C	?	-	TYR	deletion	UNP A0A6A5PYW3
C	?	-	MET	deletion	UNP A0A6A5PYW3
C	?	-	PRO	deletion	UNP A0A6A5PYW3
C	?	-	GLU	deletion	UNP A0A6A5PYW3
C	?	-	ILE	deletion	UNP A0A6A5PYW3
C	?	-	ASP	deletion	UNP A0A6A5PYW3
C	?	-	LYS	deletion	UNP A0A6A5PYW3
C	?	-	GLU	deletion	UNP A0A6A5PYW3
C	?	-	HIS	deletion	UNP A0A6A5PYW3
C	?	-	MET	deletion	UNP A0A6A5PYW3
C	?	-	GLY	deletion	UNP A0A6A5PYW3
C	?	-	GLY	deletion	UNP A0A6A5PYW3

- Molecule 2 is URIDINE 5'-TRIPHOSPHATE (three-letter code: UTP) (formula: C₉H₁₅N₂O₁₅P₃).



Mol	Chain	Residues	Atoms					AltConf	
			Total	C	H	N	O		P
2	D	1	Total	C	H	N	O	P	0
			36	9	7	2	15	3	
2	A	1	Total	C	H	N	O	P	0
			36	9	7	2	15	3	
2	B	1	Total	C	H	N	O	P	0
			36	9	7	2	15	3	
2	C	1	Total	C	H	N	O	P	0
			36	9	7	2	15	3	

- Molecule 3 is ADENOSINE-5'-TRIPHOSPHATE (three-letter code: ATP) (formula: $C_{10}H_{16}N_5O_{13}P_3$).



Mol	Chain	Residues	Atoms					AltConf	
3	D	1	Total 43	C 10	H 12	N 5	O 13	P 3	0
3	A	1	Total 43	C 10	H 12	N 5	O 13	P 3	0
3	B	1	Total 43	C 10	H 12	N 5	O 13	P 3	0
3	C	1	Total 43	C 10	H 12	N 5	O 13	P 3	0

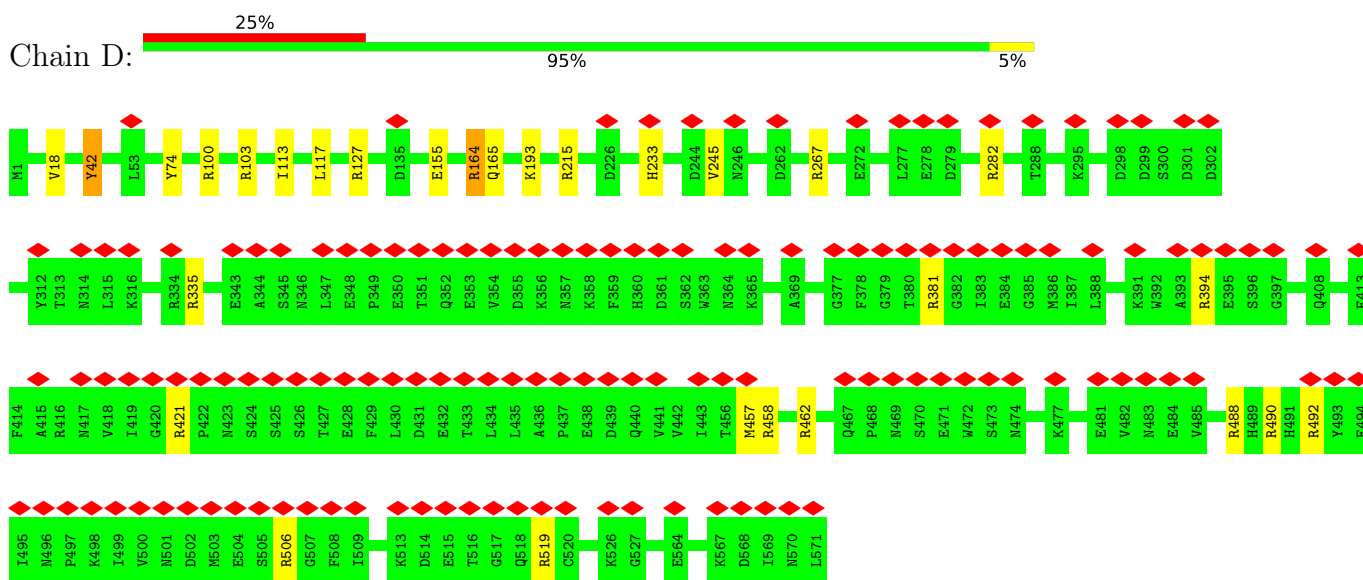
- Molecule 4 is MAGNESIUM ION (three-letter code: MG) (formula: Mg).

Mol	Chain	Residues	Atoms		AltConf
4	D	2	Total 2	Mg 2	0
4	A	2	Total 2	Mg 2	0
4	B	2	Total 2	Mg 2	0
4	C	2	Total 2	Mg 2	0

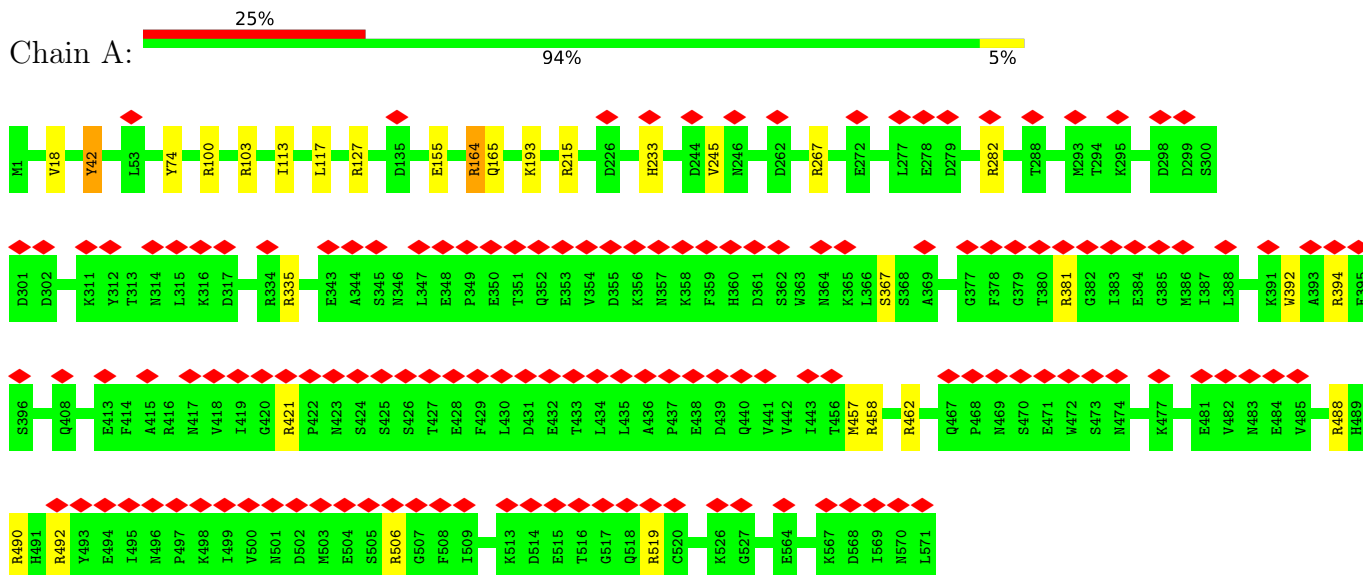
3 Residue-property plots

These plots are drawn for all protein, RNA, DNA and oligosaccharide chains in the entry. The first graphic for a chain summarises the proportions of the various outlier classes displayed in the second graphic. The second graphic shows the sequence view annotated by issues in geometry and atom inclusion in map density. Residues are color-coded according to the number of geometric quality criteria for which they contain at least one outlier: green = 0, yellow = 1, orange = 2 and red = 3 or more. A red diamond above a residue indicates a poor fit to the EM map for this residue (all-atom inclusion < 40%). Stretches of 2 or more consecutive residues without any outlier are shown as a green connector. Residues present in the sample, but not in the model, are shown in grey.

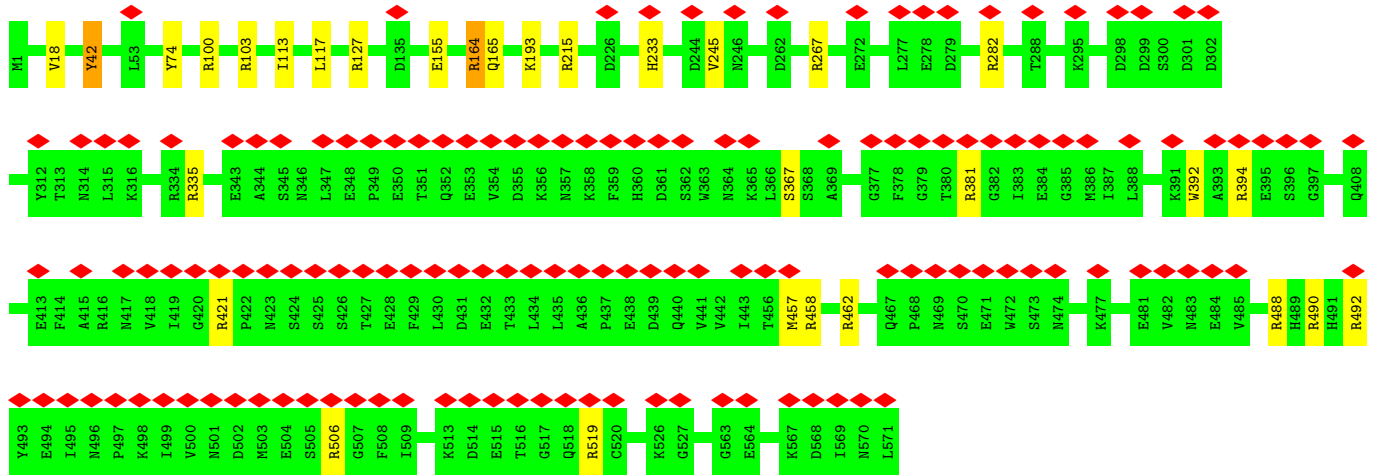
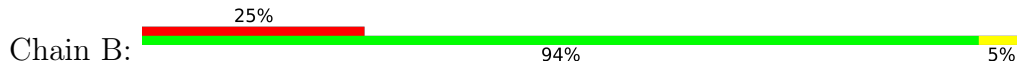
- Molecule 1: CTP synthase



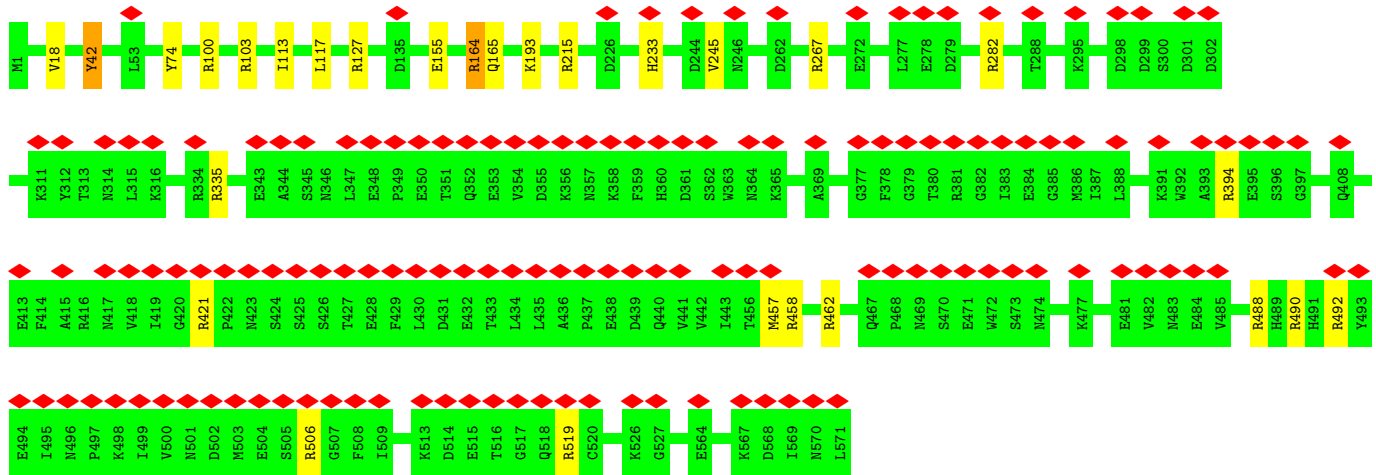
- Molecule 1: CTP synthase



- Molecule 1: CTP synthase



• Molecule 1: CTP synthase



4 Experimental information

Property	Value	Source
EM reconstruction method	SINGLE PARTICLE	Depositor
Imposed symmetry	POINT, D2	Depositor
Number of particles used	76963	Depositor
Resolution determination method	OTHER	Depositor
CTF correction method	PHASE FLIPPING AND AMPLITUDE CORRECTION	Depositor
Microscope	FEI TITAN KRIOS	Depositor
Voltage (kV)	300	Depositor
Electron dose ($e^-/\text{\AA}^2$)	90	Depositor
Minimum defocus (nm)	1200	Depositor
Maximum defocus (nm)	5500	Depositor
Magnification	130000	Depositor
Image detector	GATAN K2 SUMMIT (4k x 4k)	Depositor
Maximum map value	12.374	Depositor
Minimum map value	-5.911	Depositor
Average map value	-0.000	Depositor
Map value standard deviation	0.189	Depositor
Recommended contour level	1.61	Depositor
Map size (Å)	336.0, 336.0, 336.0	wwPDB
Map dimensions	320, 320, 320	wwPDB
Map angles (°)	90.0, 90.0, 90.0	wwPDB
Pixel spacing (Å)	1.05, 1.05, 1.05	Depositor

5 Model quality i

5.1 Standard geometry i

Bond lengths and bond angles in the following residue types are not validated in this section: ATP, MG, UTP

The Z score for a bond length (or angle) is the number of standard deviations the observed value is removed from the expected value. A bond length (or angle) with $|Z| > 5$ is considered an outlier worth inspection. RMSZ is the root-mean-square of all Z scores of the bond lengths (or angles).

Mol	Chain	Bond lengths		Bond angles	
		RMSZ	# Z >5	RMSZ	# Z >5
1	A	0.63	0/4471	1.05	22/6056 (0.4%)
1	B	0.63	0/4471	1.04	22/6056 (0.4%)
1	C	0.63	0/4471	1.05	21/6056 (0.3%)
1	D	0.63	0/4471	1.05	22/6056 (0.4%)
All	All	0.63	0/17884	1.05	87/24224 (0.4%)

There are no bond length outliers.

All (87) bond angle outliers are listed below:

Mol	Chain	Res	Type	Atoms	Z	Observed(°)	Ideal(°)
1	A	488	ARG	NE-CZ-NH1	8.28	124.44	120.30
1	D	488	ARG	NE-CZ-NH1	8.27	124.43	120.30
1	B	488	ARG	NE-CZ-NH1	8.26	124.43	120.30
1	C	488	ARG	NE-CZ-NH1	8.25	124.42	120.30
1	A	100	ARG	NE-CZ-NH2	6.98	123.79	120.30
1	D	100	ARG	NE-CZ-NH2	6.95	123.77	120.30
1	B	100	ARG	NE-CZ-NH2	6.89	123.74	120.30
1	C	100	ARG	NE-CZ-NH2	6.86	123.73	120.30
1	C	335	ARG	NE-CZ-NH1	6.86	123.73	120.30
1	D	335	ARG	NE-CZ-NH1	6.77	123.68	120.30
1	D	519	ARG	NE-CZ-NH1	6.76	123.68	120.30
1	B	519	ARG	NE-CZ-NH1	6.76	123.68	120.30
1	A	335	ARG	NE-CZ-NH1	6.76	123.68	120.30
1	B	335	ARG	NE-CZ-NH1	6.74	123.67	120.30
1	C	519	ARG	NE-CZ-NH1	6.72	123.66	120.30
1	A	519	ARG	NE-CZ-NH1	6.71	123.66	120.30
1	A	458	ARG	NE-CZ-NH1	6.64	123.62	120.30
1	C	458	ARG	NE-CZ-NH1	6.60	123.60	120.30
1	D	458	ARG	NE-CZ-NH1	6.58	123.59	120.30
1	B	458	ARG	NE-CZ-NH1	6.50	123.55	120.30

Continued on next page...

Continued from previous page...

Mol	Chain	Res	Type	Atoms	Z	Observed(°)	Ideal(°)
1	A	164	ARG	NE-CZ-NH1	6.27	123.44	120.30
1	B	164	ARG	NE-CZ-NH1	6.26	123.43	120.30
1	A	492	ARG	NE-CZ-NH1	6.24	123.42	120.30
1	D	164	ARG	NE-CZ-NH1	6.22	123.41	120.30
1	D	492	ARG	NE-CZ-NH1	6.20	123.40	120.30
1	C	492	ARG	NE-CZ-NH1	6.20	123.40	120.30
1	C	164	ARG	NE-CZ-NH1	6.20	123.40	120.30
1	B	492	ARG	NE-CZ-NH1	6.12	123.36	120.30
1	B	421	ARG	NE-CZ-NH1	6.08	123.34	120.30
1	A	421	ARG	NE-CZ-NH1	6.08	123.34	120.30
1	A	282	ARG	NE-CZ-NH1	6.07	123.34	120.30
1	B	74	TYR	CB-CG-CD2	-6.06	117.36	121.00
1	D	74	TYR	CB-CG-CD2	-6.05	117.37	121.00
1	B	282	ARG	NE-CZ-NH1	6.04	123.32	120.30
1	C	74	TYR	CB-CG-CD2	-6.03	117.38	121.00
1	D	282	ARG	NE-CZ-NH1	6.02	123.31	120.30
1	C	282	ARG	NE-CZ-NH1	6.02	123.31	120.30
1	D	421	ARG	NE-CZ-NH1	6.00	123.30	120.30
1	A	74	TYR	CB-CG-CD2	-6.00	117.40	121.00
1	C	421	ARG	NE-CZ-NH1	5.92	123.26	120.30
1	B	103	ARG	NE-CZ-NH1	5.89	123.24	120.30
1	A	267	ARG	NE-CZ-NH2	5.85	123.22	120.30
1	D	103	ARG	NE-CZ-NH1	5.84	123.22	120.30
1	A	103	ARG	NE-CZ-NH1	5.77	123.19	120.30
1	C	103	ARG	NE-CZ-NH1	5.77	123.19	120.30
1	D	267	ARG	NE-CZ-NH2	5.76	123.18	120.30
1	C	490	ARG	NE-CZ-NH1	5.76	123.18	120.30
1	B	267	ARG	NE-CZ-NH2	5.75	123.17	120.30
1	C	267	ARG	NE-CZ-NH2	5.74	123.17	120.30
1	D	490	ARG	NE-CZ-NH1	5.68	123.14	120.30
1	A	127	ARG	NE-CZ-NH1	5.63	123.11	120.30
1	A	490	ARG	NE-CZ-NH1	5.62	123.11	120.30
1	B	490	ARG	NE-CZ-NH1	5.60	123.10	120.30
1	C	127	ARG	NE-CZ-NH1	5.59	123.10	120.30
1	D	127	ARG	NE-CZ-NH1	5.57	123.08	120.30
1	B	127	ARG	NE-CZ-NH1	5.54	123.07	120.30
1	D	215	ARG	NE-CZ-NH1	5.49	123.05	120.30
1	C	215	ARG	NE-CZ-NH1	5.49	123.05	120.30
1	A	462	ARG	NE-CZ-NH1	5.45	123.03	120.30
1	C	462	ARG	NE-CZ-NH1	5.43	123.02	120.30
1	A	215	ARG	NE-CZ-NH1	5.43	123.01	120.30
1	D	42	TYR	CB-CG-CD2	-5.38	117.77	121.00

Continued on next page...

Continued from previous page...

Mol	Chain	Res	Type	Atoms	Z	Observed(°)	Ideal(°)
1	A	42	TYR	CB-CG-CD2	-5.38	117.77	121.00
1	C	42	TYR	CB-CG-CD2	-5.37	117.78	121.00
1	D	103	ARG	NE-CZ-NH2	-5.37	117.62	120.30
1	B	103	ARG	NE-CZ-NH2	-5.37	117.62	120.30
1	C	103	ARG	NE-CZ-NH2	-5.37	117.62	120.30
1	D	462	ARG	NE-CZ-NH1	5.34	122.97	120.30
1	A	103	ARG	NE-CZ-NH2	-5.33	117.63	120.30
1	B	42	TYR	CB-CG-CD2	-5.33	117.80	121.00
1	B	215	ARG	NE-CZ-NH1	5.29	122.95	120.30
1	A	490	ARG	NE-CZ-NH2	-5.27	117.66	120.30
1	B	462	ARG	NE-CZ-NH1	5.27	122.93	120.30
1	C	490	ARG	NE-CZ-NH2	-5.26	117.67	120.30
1	D	490	ARG	NE-CZ-NH2	-5.23	117.68	120.30
1	C	506	ARG	NE-CZ-NH1	5.16	122.88	120.30
1	B	490	ARG	NE-CZ-NH2	-5.15	117.73	120.30
1	A	394	ARG	NE-CZ-NH2	5.12	122.86	120.30
1	D	506	ARG	NE-CZ-NH1	5.12	122.86	120.30
1	B	381	ARG	NE-CZ-NH2	5.10	122.85	120.30
1	B	394	ARG	NE-CZ-NH2	5.09	122.85	120.30
1	B	506	ARG	NE-CZ-NH1	5.06	122.83	120.30
1	C	394	ARG	NE-CZ-NH2	5.05	122.83	120.30
1	A	506	ARG	NE-CZ-NH1	5.05	122.82	120.30
1	D	381	ARG	NE-CZ-NH2	5.04	122.82	120.30
1	D	394	ARG	NE-CZ-NH2	5.03	122.82	120.30
1	A	381	ARG	NE-CZ-NH2	5.03	122.81	120.30

There are no chirality outliers.

There are no planarity outliers.

5.2 Too-close contacts

In the following table, the Non-H and H(model) columns list the number of non-hydrogen atoms and hydrogen atoms in the chain respectively. The H(added) column lists the number of hydrogen atoms added and optimized by MolProbity. The Clashes column lists the number of clashes within the asymmetric unit, whereas Symm-Clashes lists symmetry-related clashes.

Mol	Chain	Non-H	H(model)	H(added)	Clashes	Symm-Clashes
1	A	4385	4391	4392	12	0
1	B	4385	4391	4392	12	0
1	C	4385	4391	4392	10	0
1	D	4385	4391	4392	11	0

Continued on next page...

Continued from previous page...

Mol	Chain	Non-H	H(model)	H(added)	Clashes	Symm-Clashes
2	A	29	7	11	2	0
2	B	29	7	11	2	0
2	C	29	7	11	1	0
2	D	29	7	11	2	0
3	A	31	12	12	1	0
3	B	31	12	12	1	0
3	C	31	12	12	1	0
3	D	31	12	12	1	0
4	A	2	0	0	0	0
4	B	2	0	0	0	0
4	C	2	0	0	0	0
4	D	2	0	0	0	0
All	All	17788	17640	17660	29	0

The all-atom clashscore is defined as the number of clashes found per 1000 atoms (including hydrogen atoms). The all-atom clashscore for this structure is 1.

All (29) close contacts within the same asymmetric unit are listed below, sorted by their clash magnitude.

Atom-1	Atom-2	Interatomic distance (Å)	Clash overlap (Å)
2:D:601:UTP:O3G	1:C:193:LYS:N	2.31	0.64
1:A:193:LYS:N	2:B:602:UTP:O3G	2.32	0.62
1:D:193:LYS:N	2:C:602:UTP:O2G	2.33	0.62
2:A:601:UTP:O2G	1:B:193:LYS:N	2.33	0.61
1:C:18:VAL:HG21	3:C:603:ATP:H2'	1.85	0.58
1:D:18:VAL:HG21	3:D:602:ATP:H2'	1.85	0.57
1:A:18:VAL:HG21	3:A:602:ATP:H2'	1.85	0.56
1:B:18:VAL:HG21	3:B:603:ATP:H2'	1.85	0.56
1:D:233:HIS:CE1	1:A:165:GLN:HE21	2.28	0.52
1:D:165:GLN:HE21	1:A:233:HIS:CE1	2.28	0.51
1:B:233:HIS:CE1	1:C:165:GLN:HE21	2.29	0.51
1:B:233:HIS:CD2	1:C:164:ARG:HH22	2.30	0.50
1:D:164:ARG:HH22	1:A:233:HIS:CD2	2.30	0.50
1:B:165:GLN:HE21	1:C:233:HIS:CE1	2.31	0.49
1:D:233:HIS:CD2	1:A:164:ARG:HH22	2.30	0.48
1:D:113:ILE:HD12	1:B:155:GLU:HA	1.97	0.47
1:A:155:GLU:HA	1:C:113:ILE:HD12	1.97	0.47
1:D:233:HIS:HE1	1:A:165:GLN:HE21	1.63	0.47
1:B:164:ARG:HH22	1:C:233:HIS:CD2	2.32	0.47
1:D:155:GLU:HA	1:B:113:ILE:HD12	1.97	0.46
1:B:233:HIS:HE1	1:C:165:GLN:HE21	1.63	0.46

Continued on next page...

Continued from previous page...

Atom-1	Atom-2	Interatomic distance (Å)	Clash overlap (Å)
1:D:165:GLN:HE21	1:A:233:HIS:HE1	1.63	0.45
1:D:155:GLU:OE1	2:D:601:UTP:O2'	2.20	0.45
1:A:113:ILE:HD12	1:C:155:GLU:HA	1.98	0.45
1:A:155:GLU:OE1	2:A:601:UTP:O2'	2.20	0.45
1:B:155:GLU:OE1	2:B:602:UTP:O2'	2.20	0.44
1:B:165:GLN:HE21	1:C:233:HIS:HE1	1.65	0.44
1:A:367:SER:HA	1:A:392:TRP:CH2	2.57	0.40
1:B:367:SER:HA	1:B:392:TRP:CH2	2.57	0.40

There are no symmetry-related clashes.

5.3 Torsion angles [i](#)

5.3.1 Protein backbone [i](#)

In the following table, the Percentiles column shows the percent Ramachandran outliers of the chain as a percentile score with respect to all PDB entries followed by that with respect to all EM entries.

The Analysed column shows the number of residues for which the backbone conformation was analysed, and the total number of residues.

Mol	Chain	Analysed	Favoured	Allowed	Outliers	Percentiles	
1	A	555/559 (99%)	539 (97%)	16 (3%)	0	100	100
1	B	555/559 (99%)	539 (97%)	16 (3%)	0	100	100
1	C	555/559 (99%)	539 (97%)	16 (3%)	0	100	100
1	D	555/559 (99%)	539 (97%)	16 (3%)	0	100	100
All	All	2220/2236 (99%)	2156 (97%)	64 (3%)	0	100	100

There are no Ramachandran outliers to report.

5.3.2 Protein sidechains [i](#)

In the following table, the Percentiles column shows the percent sidechain outliers of the chain as a percentile score with respect to all PDB entries followed by that with respect to all EM entries.

The Analysed column shows the number of residues for which the sidechain conformation was analysed, and the total number of residues.

Mol	Chain	Analysed	Rotameric	Outliers	Percentiles	
1	A	488/488 (100%)	484 (99%)	4 (1%)	81	94
1	B	488/488 (100%)	484 (99%)	4 (1%)	81	94
1	C	488/488 (100%)	484 (99%)	4 (1%)	81	94
1	D	488/488 (100%)	484 (99%)	4 (1%)	81	94
All	All	1952/1952 (100%)	1936 (99%)	16 (1%)	82	94

All (16) residues with a non-rotameric sidechain are listed below:

Mol	Chain	Res	Type
1	D	42	TYR
1	D	117	LEU
1	D	245	VAL
1	D	457	MET
1	A	42	TYR
1	A	117	LEU
1	A	245	VAL
1	A	457	MET
1	B	42	TYR
1	B	117	LEU
1	B	245	VAL
1	B	457	MET
1	C	42	TYR
1	C	117	LEU
1	C	245	VAL
1	C	457	MET

Sometimes sidechains can be flipped to improve hydrogen bonding and reduce clashes. All (4) such sidechains are listed below:

Mol	Chain	Res	Type
1	D	233	HIS
1	A	233	HIS
1	B	233	HIS
1	C	233	HIS

5.3.3 RNA [i](#)

There are no RNA molecules in this entry.

5.4 Non-standard residues in protein, DNA, RNA chains [i](#)

There are no non-standard protein/DNA/RNA residues in this entry.

5.5 Carbohydrates [i](#)

There are no monosaccharides in this entry.

5.6 Ligand geometry [i](#)

Of 16 ligands modelled in this entry, 8 are monoatomic - leaving 8 for Mogul analysis.

In the following table, the Counts columns list the number of bonds (or angles) for which Mogul statistics could be retrieved, the number of bonds (or angles) that are observed in the model and the number of bonds (or angles) that are defined in the Chemical Component Dictionary. The Link column lists molecule types, if any, to which the group is linked. The Z score for a bond length (or angle) is the number of standard deviations the observed value is removed from the expected value. A bond length (or angle) with $|Z| > 2$ is considered an outlier worth inspection. RMSZ is the root-mean-square of all Z scores of the bond lengths (or angles).

Mol	Type	Chain	Res	Link	Bond lengths			Bond angles		
					Counts	RMSZ	# Z > 2	Counts	RMSZ	# Z > 2
3	ATP	A	602	4	26,33,33	1.42	2 (7%)	31,52,52	1.27	3 (9%)
3	ATP	B	603	4	26,33,33	1.42	2 (7%)	31,52,52	1.27	3 (9%)
2	UTP	B	602	4	22,30,30	1.00	1 (4%)	27,47,47	1.38	3 (11%)
2	UTP	A	601	4	22,30,30	1.00	1 (4%)	27,47,47	1.40	3 (11%)
3	ATP	C	603	4	26,33,33	1.42	2 (7%)	31,52,52	1.27	3 (9%)
2	UTP	C	602	4	22,30,30	0.98	1 (4%)	27,47,47	1.40	3 (11%)
2	UTP	D	601	4	22,30,30	0.99	1 (4%)	27,47,47	1.38	3 (11%)
3	ATP	D	602	4	26,33,33	1.42	2 (7%)	31,52,52	1.27	3 (9%)

In the following table, the Chirals column lists the number of chiral outliers, the number of chiral centers analysed, the number of these observed in the model and the number defined in the Chemical Component Dictionary. Similar counts are reported in the Torsion and Rings columns. '-' means no outliers of that kind were identified.

Mol	Type	Chain	Res	Link	Chirals	Torsions	Rings
3	ATP	A	602	4	-	4/18/38/38	0/3/3/3
3	ATP	B	603	4	-	4/18/38/38	0/3/3/3
2	UTP	B	602	4	-	7/20/38/38	0/2/2/2
2	UTP	A	601	4	-	8/20/38/38	0/2/2/2

Continued on next page...

Continued from previous page...

Mol	Type	Chain	Res	Link	Chirals	Torsions	Rings
3	ATP	C	603	4	-	4/18/38/38	0/3/3/3
2	UTP	C	602	4	-	8/20/38/38	0/2/2/2
2	UTP	D	601	4	-	7/20/38/38	0/2/2/2
3	ATP	D	602	4	-	4/18/38/38	0/3/3/3

All (12) bond length outliers are listed below:

Mol	Chain	Res	Type	Atoms	Z	Observed(Å)	Ideal(Å)
3	A	602	ATP	PB-O1B	-4.56	1.34	1.50
3	C	603	ATP	PB-O1B	-4.56	1.34	1.50
3	D	602	ATP	PB-O1B	-4.55	1.34	1.50
3	B	603	ATP	PB-O1B	-4.54	1.34	1.50
2	D	601	UTP	C4-N3	2.88	1.38	1.33
2	A	601	UTP	C4-N3	2.88	1.38	1.33
2	B	602	UTP	C4-N3	2.86	1.38	1.33
2	C	602	UTP	C4-N3	2.85	1.38	1.33
3	A	602	ATP	PB-O2B	-2.83	1.42	1.55
3	D	602	ATP	PB-O2B	-2.83	1.42	1.55
3	B	603	ATP	PB-O2B	-2.82	1.42	1.55
3	C	603	ATP	PB-O2B	-2.81	1.42	1.55

All (24) bond angle outliers are listed below:

Mol	Chain	Res	Type	Atoms	Z	Observed(°)	Ideal(°)
3	C	603	ATP	PB-O3B-PG	4.60	148.62	132.83
3	B	603	ATP	PB-O3B-PG	4.60	148.62	132.83
3	A	602	ATP	PB-O3B-PG	4.60	148.60	132.83
3	D	602	ATP	PB-O3B-PG	4.60	148.59	132.83
2	C	602	UTP	C5-C4-N3	-4.10	114.30	123.31
2	D	601	UTP	C5-C4-N3	-4.07	114.34	123.31
2	A	601	UTP	C5-C4-N3	-4.07	114.35	123.31
2	B	602	UTP	C5-C4-N3	-4.07	114.35	123.31
3	A	602	ATP	C5-C6-N6	2.76	124.54	120.35
3	B	603	ATP	C5-C6-N6	2.76	124.54	120.35
3	C	603	ATP	C5-C6-N6	2.75	124.53	120.35
3	D	602	ATP	C5-C6-N6	2.73	124.51	120.35
2	B	602	UTP	C2'-C3'-C4'	-2.61	97.56	102.64
2	A	601	UTP	C2'-C3'-C4'	-2.60	97.59	102.64
2	D	601	UTP	C2'-C3'-C4'	-2.60	97.59	102.64
2	C	602	UTP	C2'-C3'-C4'	-2.59	97.61	102.64
2	D	601	UTP	O3'-C3'-C2'	2.41	119.61	111.82

Continued on next page...

Continued from previous page...

Mol	Chain	Res	Type	Atoms	Z	Observed(°)	Ideal(°)
2	A	601	UTP	O3'-C3'-C2'	2.41	119.61	111.82
2	C	602	UTP	O3'-C3'-C2'	2.40	119.58	111.82
2	B	602	UTP	O3'-C3'-C2'	2.40	119.58	111.82
3	C	603	ATP	C3'-C2'-C1'	2.14	104.20	100.98
3	D	602	ATP	C3'-C2'-C1'	2.13	104.18	100.98
3	A	602	ATP	C3'-C2'-C1'	2.11	104.16	100.98
3	B	603	ATP	C3'-C2'-C1'	2.11	104.15	100.98

There are no chirality outliers.

All (46) torsion outliers are listed below:

Mol	Chain	Res	Type	Atoms
2	D	601	UTP	C5'-O5'-PA-O1A
2	D	601	UTP	O4'-C4'-C5'-O5'
2	A	601	UTP	C5'-O5'-PA-O1A
2	A	601	UTP	C5'-O5'-PA-O2A
2	A	601	UTP	O4'-C4'-C5'-O5'
2	B	602	UTP	C5'-O5'-PA-O1A
2	B	602	UTP	O4'-C4'-C5'-O5'
2	C	602	UTP	C5'-O5'-PA-O1A
2	C	602	UTP	C5'-O5'-PA-O2A
2	C	602	UTP	O4'-C4'-C5'-O5'
3	D	602	ATP	C5'-O5'-PA-O2A
3	A	602	ATP	C5'-O5'-PA-O2A
3	B	603	ATP	C5'-O5'-PA-O2A
3	C	603	ATP	C5'-O5'-PA-O2A
2	D	601	UTP	C3'-C4'-C5'-O5'
2	A	601	UTP	C3'-C4'-C5'-O5'
2	B	602	UTP	C3'-C4'-C5'-O5'
2	C	602	UTP	C3'-C4'-C5'-O5'
2	D	601	UTP	C4'-C5'-O5'-PA
2	A	601	UTP	C4'-C5'-O5'-PA
2	B	602	UTP	C4'-C5'-O5'-PA
2	C	602	UTP	C4'-C5'-O5'-PA
2	D	601	UTP	PB-O3A-PA-O5'
2	A	601	UTP	PB-O3A-PA-O5'
2	B	602	UTP	PB-O3A-PA-O5'
2	C	602	UTP	PB-O3A-PA-O5'
3	D	602	ATP	C5'-O5'-PA-O3A
3	A	602	ATP	C5'-O5'-PA-O3A
3	B	603	ATP	C5'-O5'-PA-O3A
3	C	603	ATP	C5'-O5'-PA-O3A

Continued on next page...

Continued from previous page...

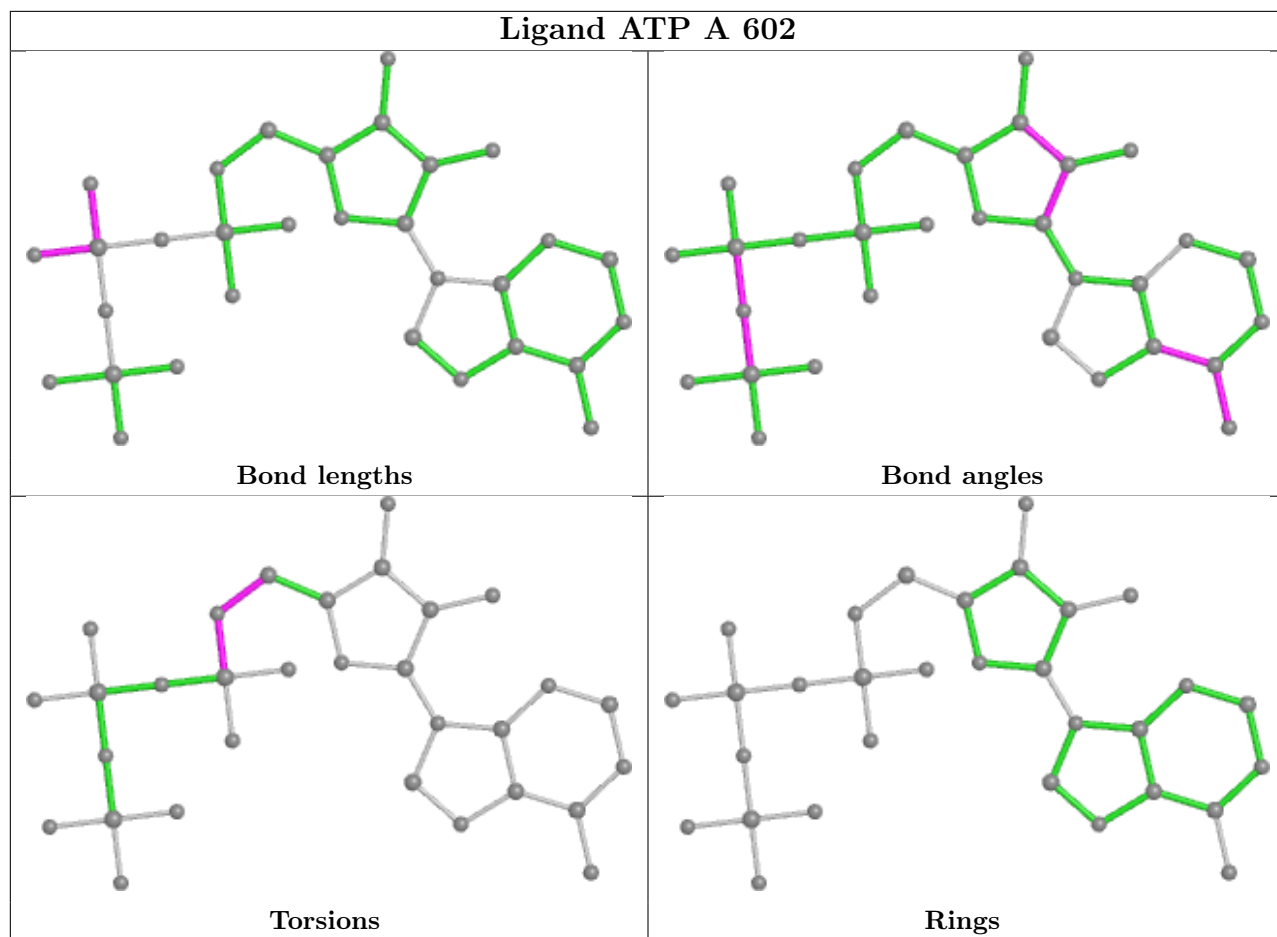
Mol	Chain	Res	Type	Atoms
2	D	601	UTP	C5'-O5'-PA-O2A
2	B	602	UTP	C5'-O5'-PA-O2A
3	D	602	ATP	C5'-O5'-PA-O1A
3	A	602	ATP	C5'-O5'-PA-O1A
3	B	603	ATP	C5'-O5'-PA-O1A
3	C	603	ATP	C5'-O5'-PA-O1A
3	D	602	ATP	C4'-C5'-O5'-PA
3	A	602	ATP	C4'-C5'-O5'-PA
3	B	603	ATP	C4'-C5'-O5'-PA
3	C	603	ATP	C4'-C5'-O5'-PA
2	D	601	UTP	C5'-O5'-PA-O3A
2	A	601	UTP	C5'-O5'-PA-O3A
2	B	602	UTP	C5'-O5'-PA-O3A
2	C	602	UTP	C5'-O5'-PA-O3A
2	A	601	UTP	PB-O3A-PA-O1A
2	C	602	UTP	PB-O3A-PA-O1A

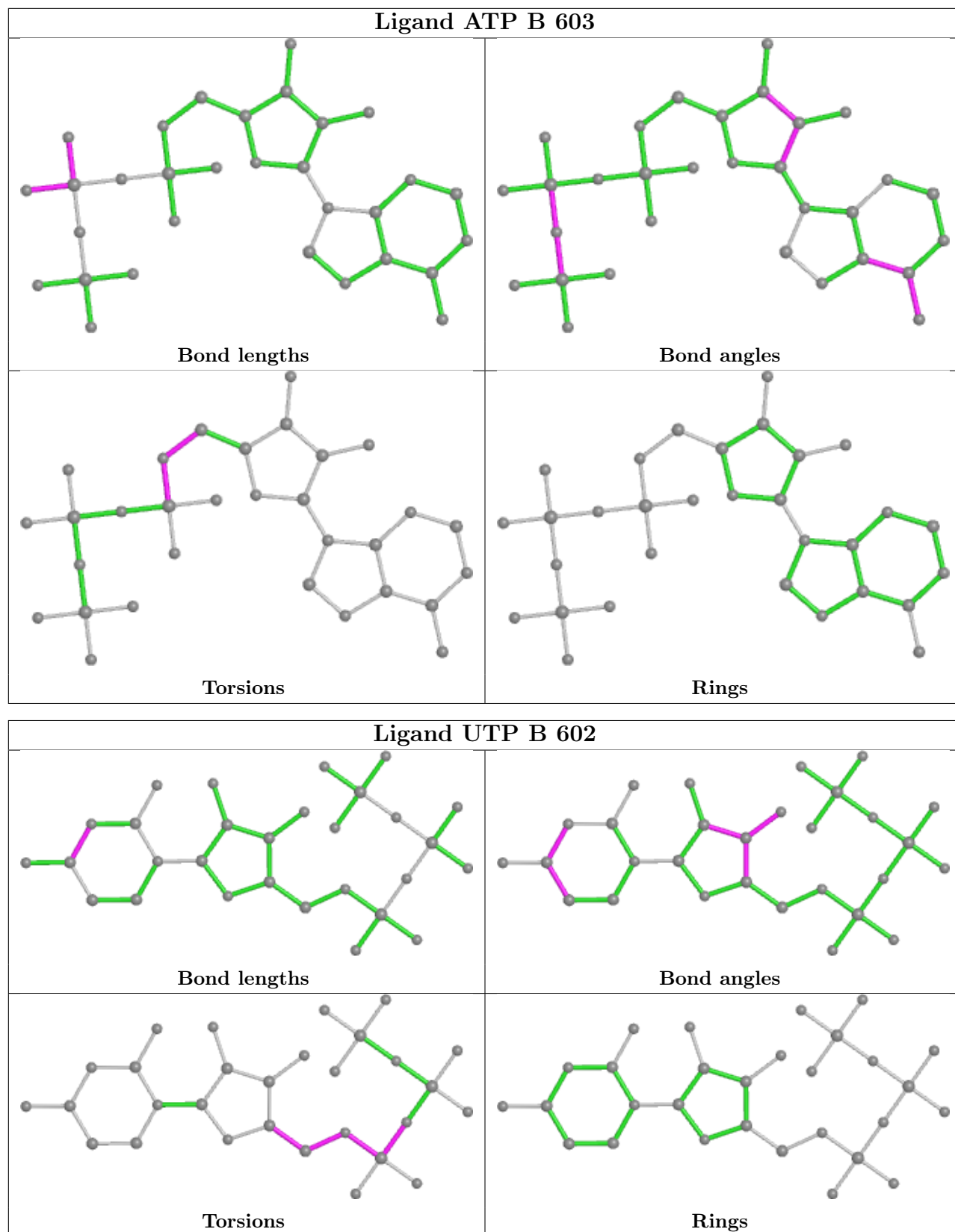
There are no ring outliers.

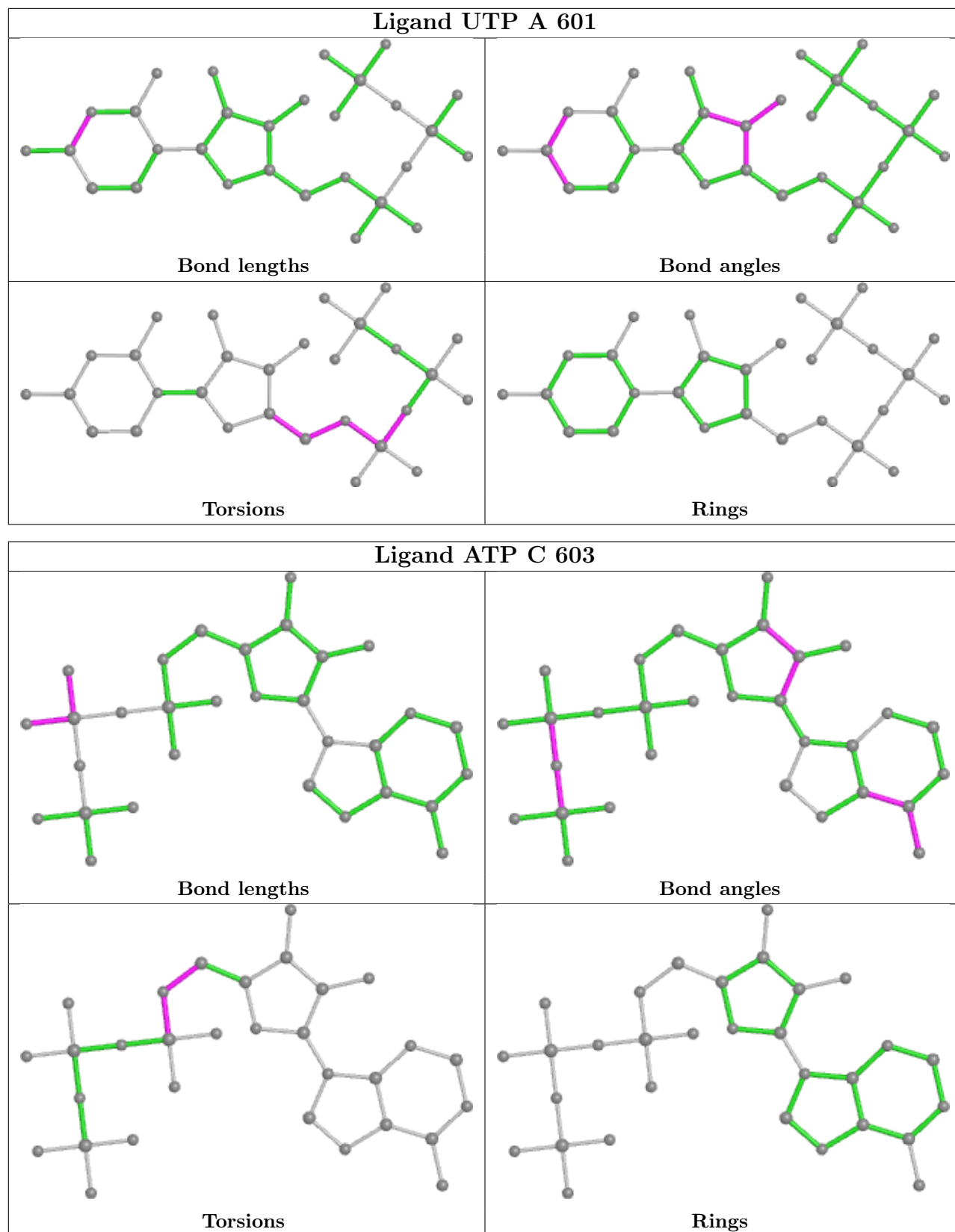
8 monomers are involved in 11 short contacts:

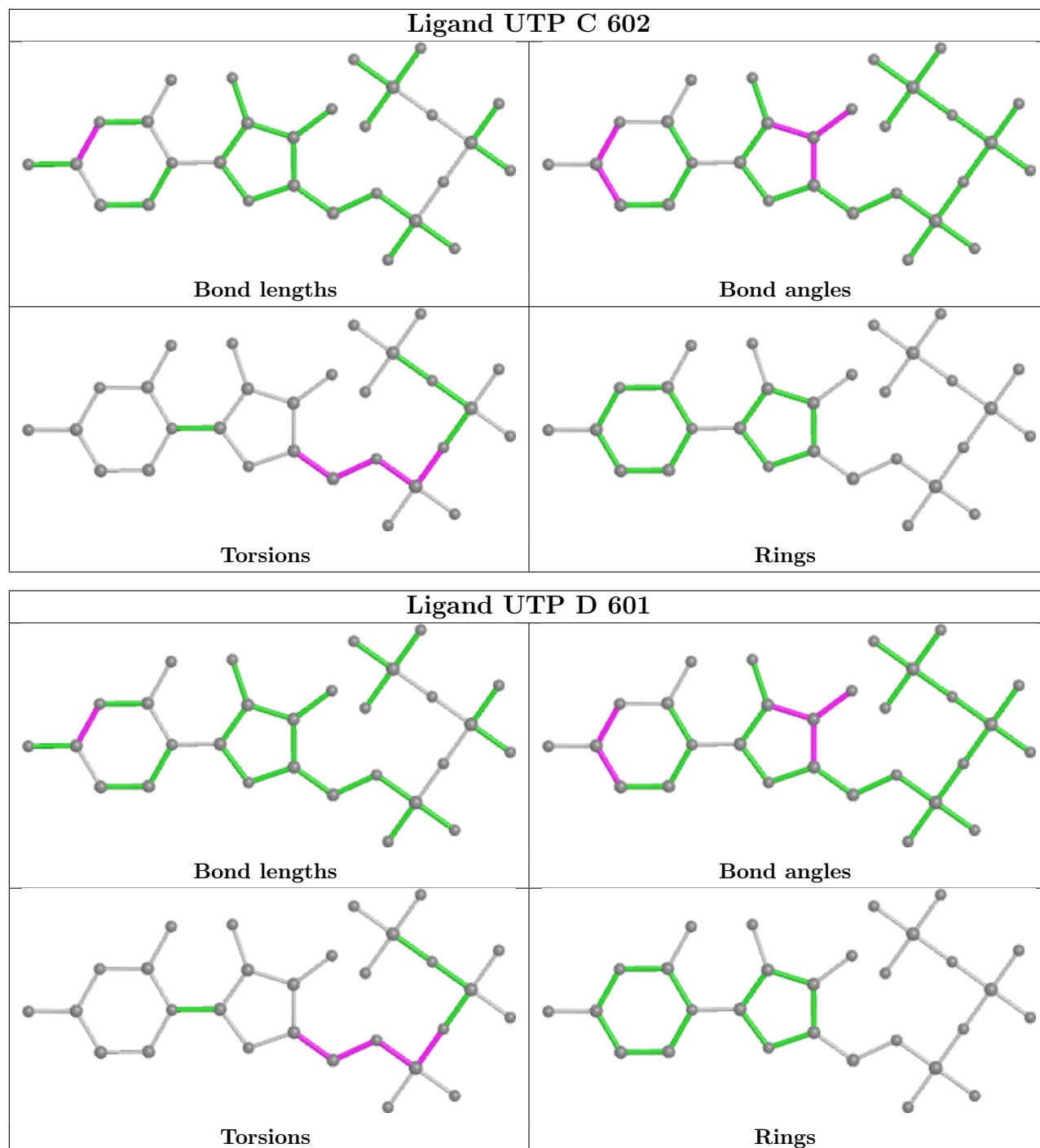
Mol	Chain	Res	Type	Clashes	Symm-Clashes
3	A	602	ATP	1	0
3	B	603	ATP	1	0
2	B	602	UTP	2	0
2	A	601	UTP	2	0
3	C	603	ATP	1	0
2	C	602	UTP	1	0
2	D	601	UTP	2	0
3	D	602	ATP	1	0

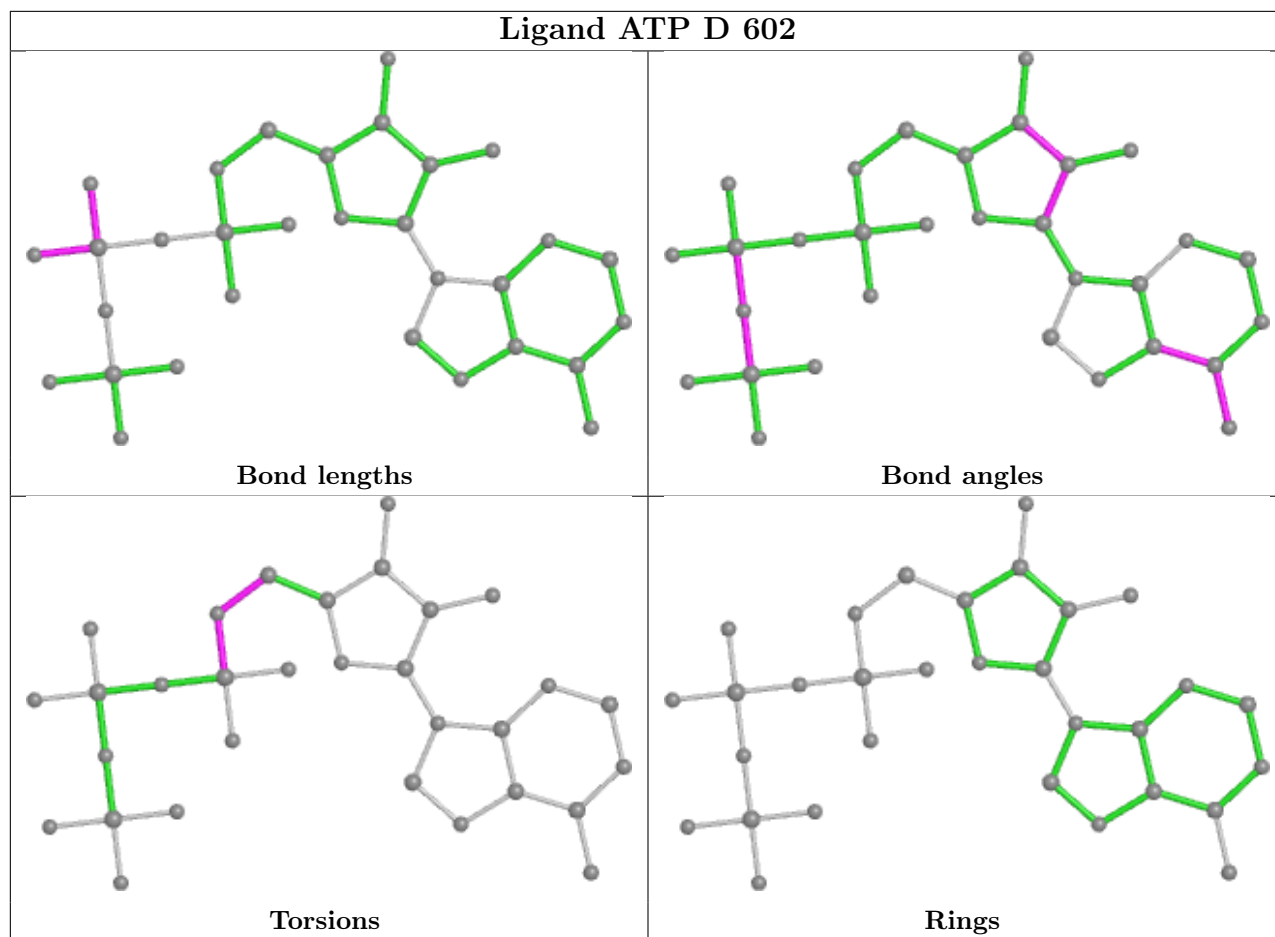
The following is a two-dimensional graphical depiction of Mogul quality analysis of bond lengths, bond angles, torsion angles, and ring geometry for all instances of the Ligand of Interest. In addition, ligands with molecular weight > 250 and outliers as shown on the validation Tables will also be included. For torsion angles, if less than 5% of the Mogul distribution of torsion angles is within 10 degrees of the torsion angle in question, then that torsion angle is considered an outlier. Any bond that is central to one or more torsion angles identified as an outlier by Mogul will be highlighted in the graph. For rings, the root-mean-square deviation (RMSD) between the ring in question and similar rings identified by Mogul is calculated over all ring torsion angles. If the average RMSD is greater than 60 degrees and the minimal RMSD between the ring in question and any Mogul-identified rings is also greater than 60 degrees, then that ring is considered an outlier. The outliers are highlighted in purple. The color gray indicates Mogul did not find sufficient equivalents in the CSD to analyse the geometry.











5.7 Other polymers [\(i\)](#)

There are no such residues in this entry.

5.8 Polymer linkage issues [\(i\)](#)

The following chains have linkage breaks:

Mol	Chain	Number of breaks
1	D	1
1	A	1
1	B	1
1	C	1

All chain breaks are listed below:

Model	Chain	Residue-1	Atom-1	Residue-2	Atom-2	Distance (Å)
1	D	443:ILE	C	456:THR	N	7.50
1	A	443:ILE	C	456:THR	N	7.50

Continued on next page...

Continued from previous page...

Model	Chain	Residue-1	Atom-1	Residue-2	Atom-2	Distance (Å)
1	B	443:ILE	C	456:THR	N	7.50
1	C	443:ILE	C	456:THR	N	7.50

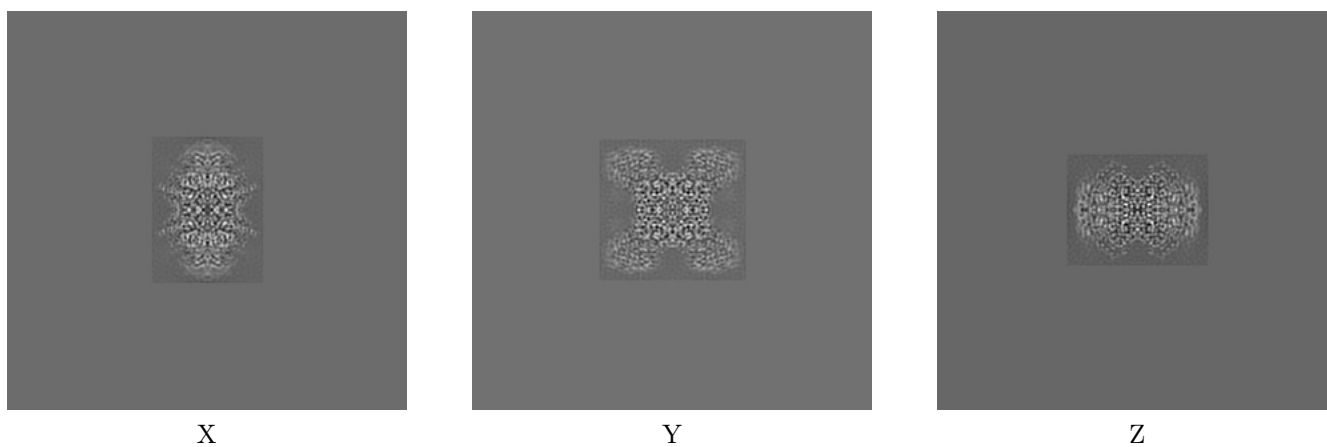
6 Map visualisation [i](#)

This section contains visualisations of the EMDB entry EMD-24497. These allow visual inspection of the internal detail of the map and identification of artifacts.

No raw map or half-maps were deposited for this entry and therefore no images, graphs, etc. pertaining to the raw map can be shown.

6.1 Orthogonal projections [i](#)

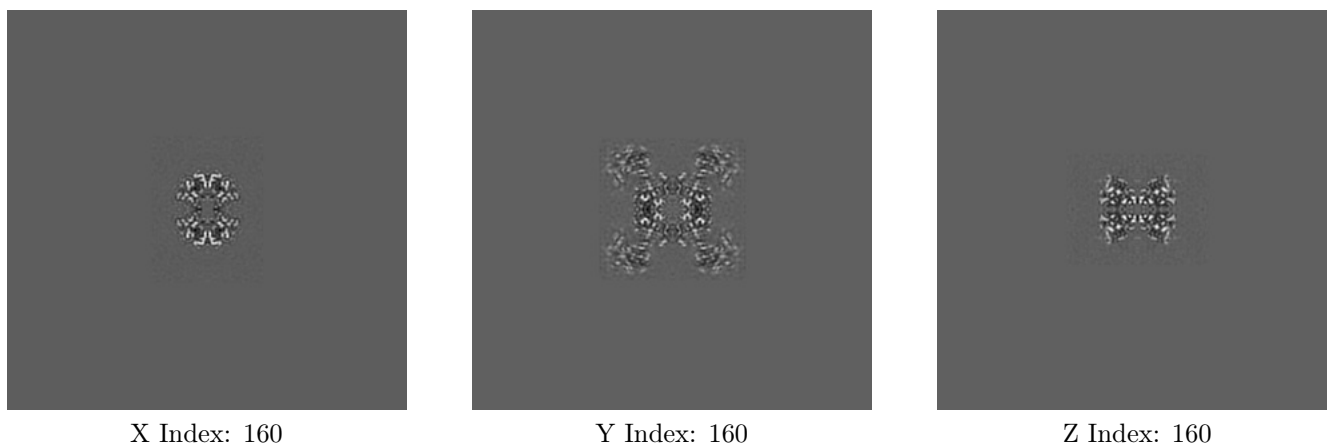
6.1.1 Primary map



The images above show the map projected in three orthogonal directions.

6.2 Central slices [i](#)

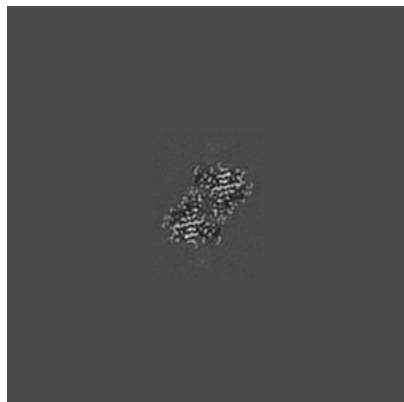
6.2.1 Primary map



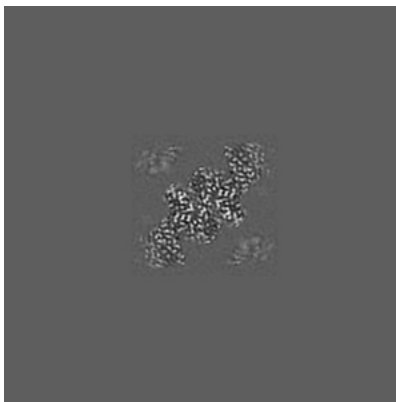
The images above show central slices of the map in three orthogonal directions.

6.3 Largest variance slices [i](#)

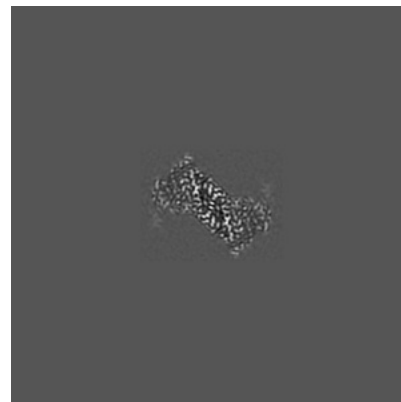
6.3.1 Primary map



X Index: 172



Y Index: 169

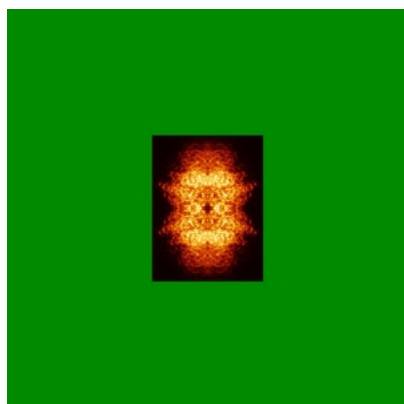


Z Index: 141

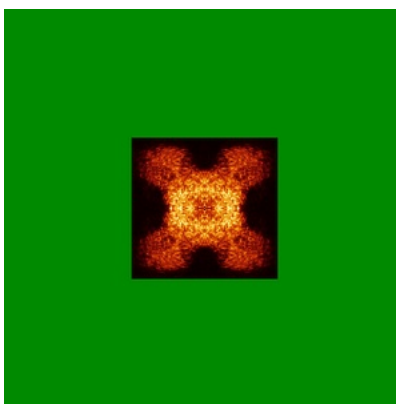
The images above show the largest variance slices of the map in three orthogonal directions.

6.4 Orthogonal standard-deviation projections (False-color) [i](#)

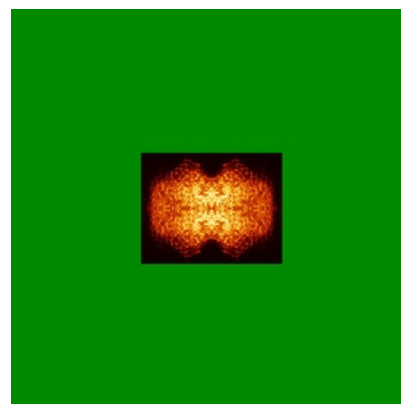
6.4.1 Primary map



X



Y

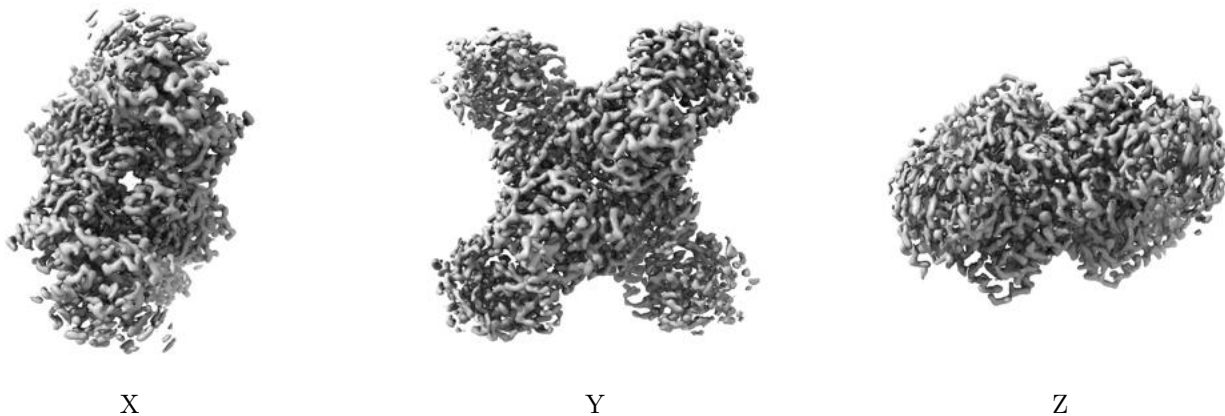


Z

The images above show the map standard deviation projections with false color in three orthogonal directions. Minimum values are shown in green, max in blue, and dark to light orange shades represent small to large values respectively.

6.5 Orthogonal surface views [i](#)

6.5.1 Primary map



The images above show the 3D surface view of the map at the recommended contour level 1.61. These images, in conjunction with the slice images, may facilitate assessment of whether an appropriate contour level has been provided.

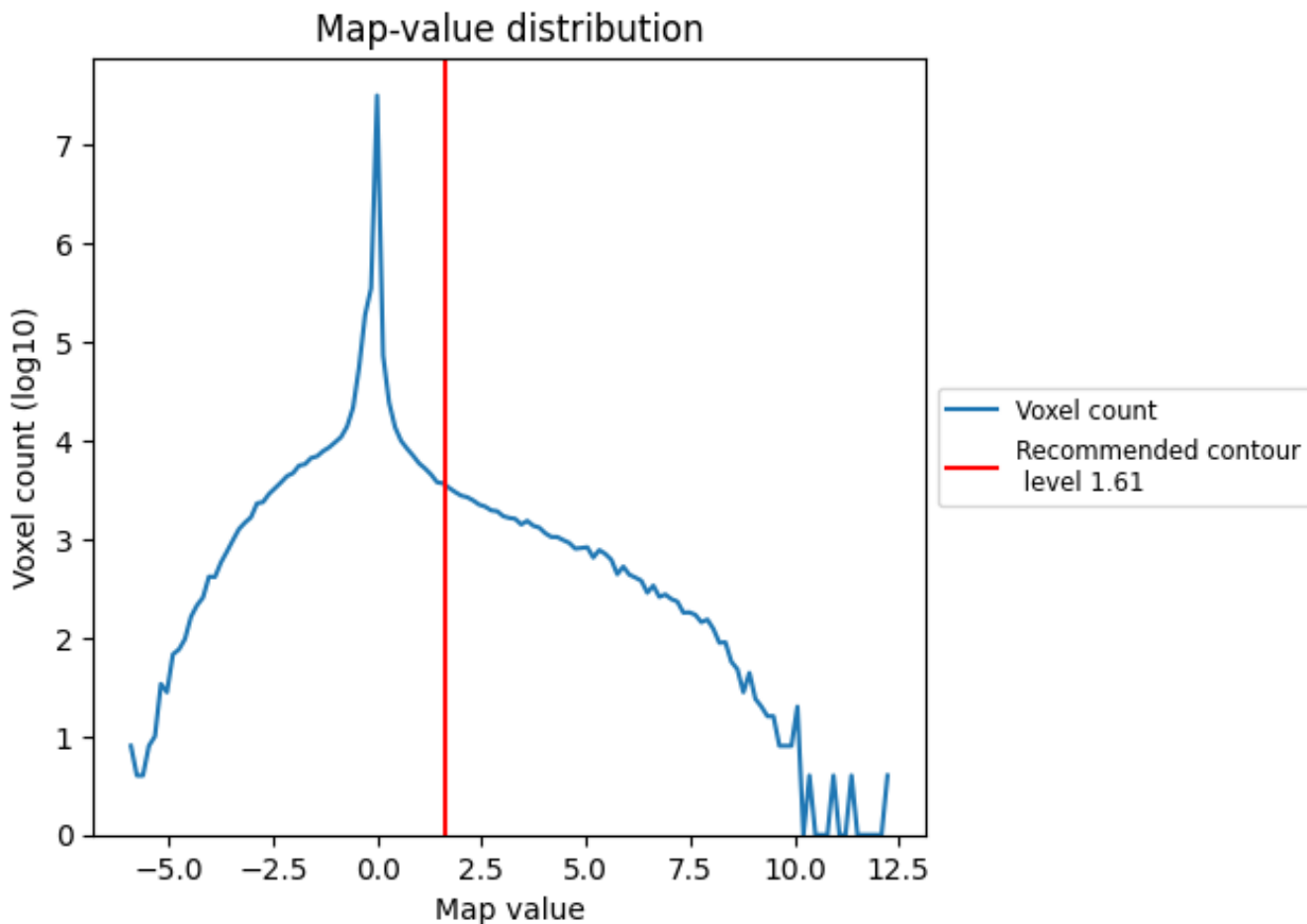
6.6 Mask visualisation [i](#)

This section was not generated. No masks/segmentation were deposited.

7 Map analysis [i](#)

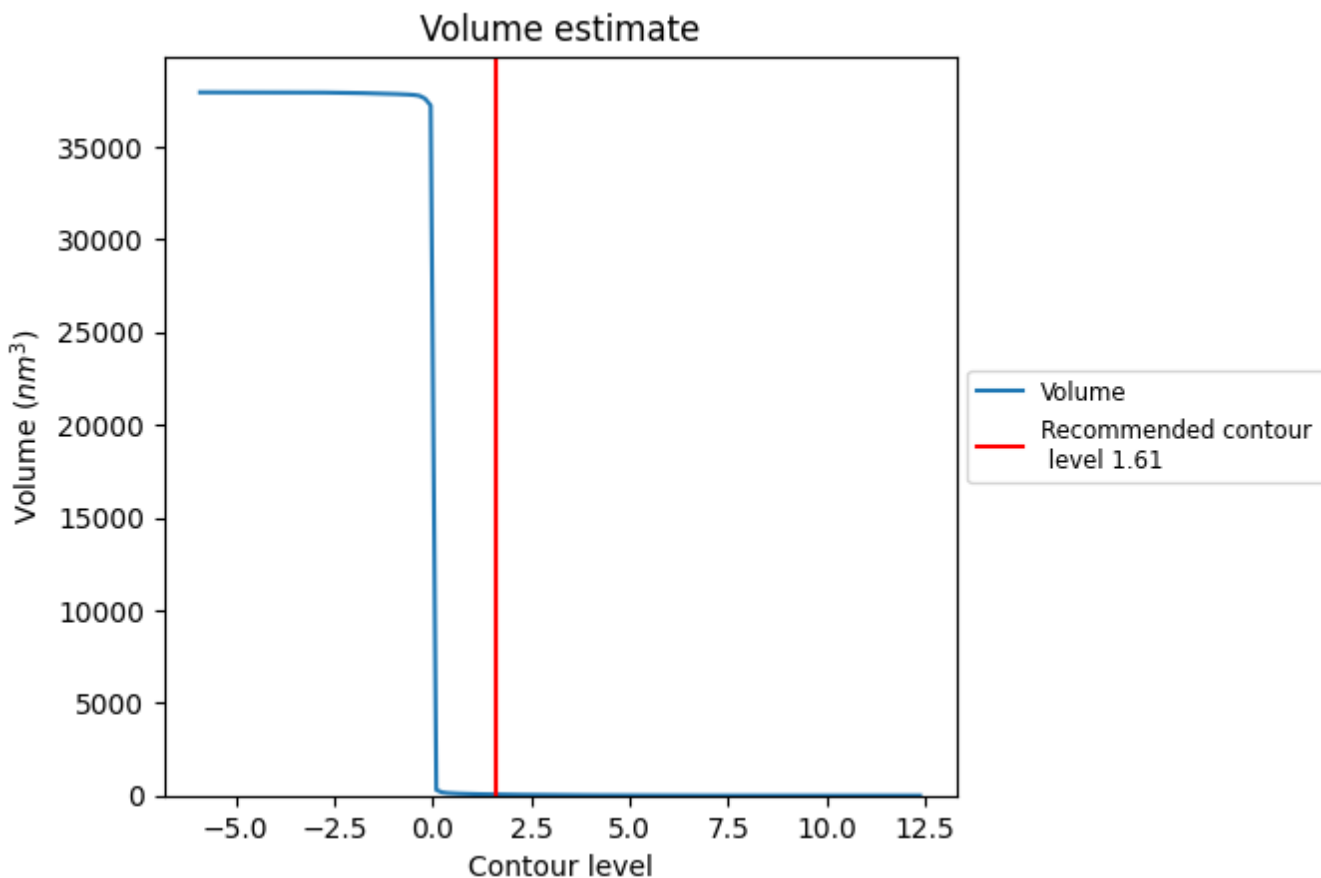
This section contains the results of statistical analysis of the map.

7.1 Map-value distribution [i](#)



The map-value distribution is plotted in 128 intervals along the x-axis. The y-axis is logarithmic. A spike in this graph at zero usually indicates that the volume has been masked.

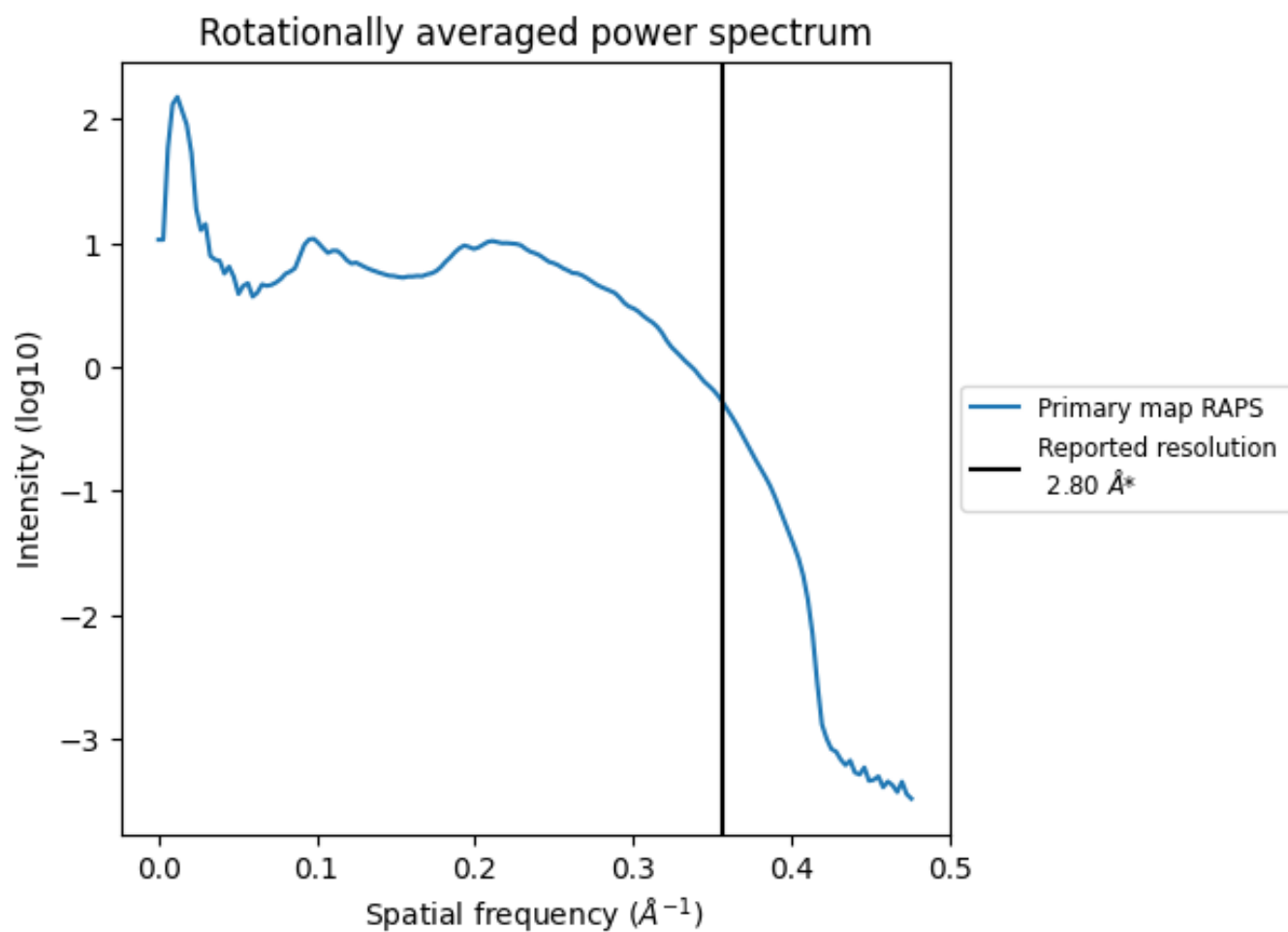
7.2 Volume estimate [\(i\)](#)



The volume at the recommended contour level is 60 nm^3 ; this corresponds to an approximate mass of 54 kDa.

The volume estimate graph shows how the enclosed volume varies with the contour level. The recommended contour level is shown as a vertical line and the intersection between the line and the curve gives the volume of the enclosed surface at the given level.

7.3 Rotationally averaged power spectrum [i](#)



*Reported resolution corresponds to spatial frequency of 0.357\AA^{-1}

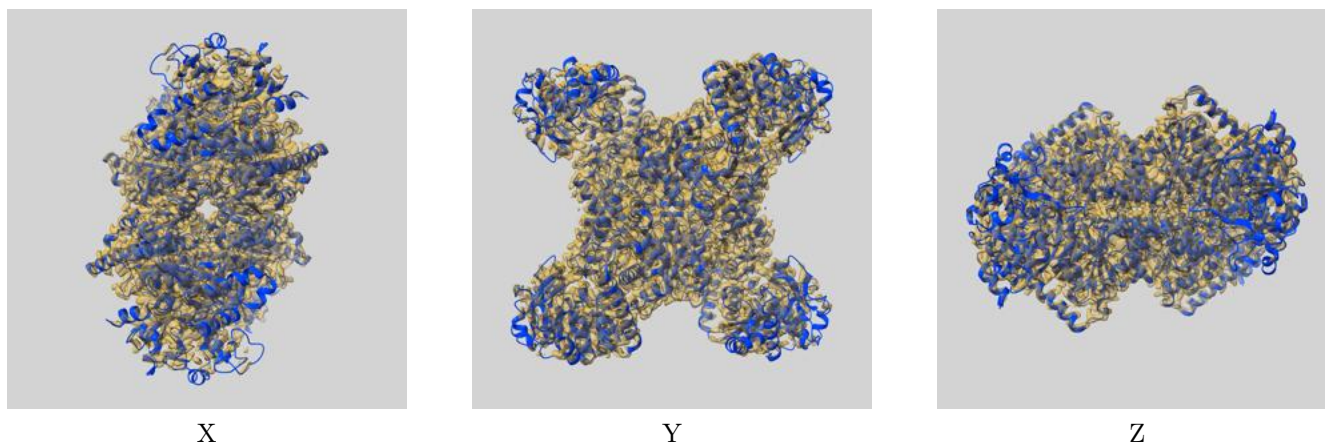
8 Fourier-Shell correlation

This section was not generated. No FSC curve or half-maps provided.

9 Map-model fit [i](#)

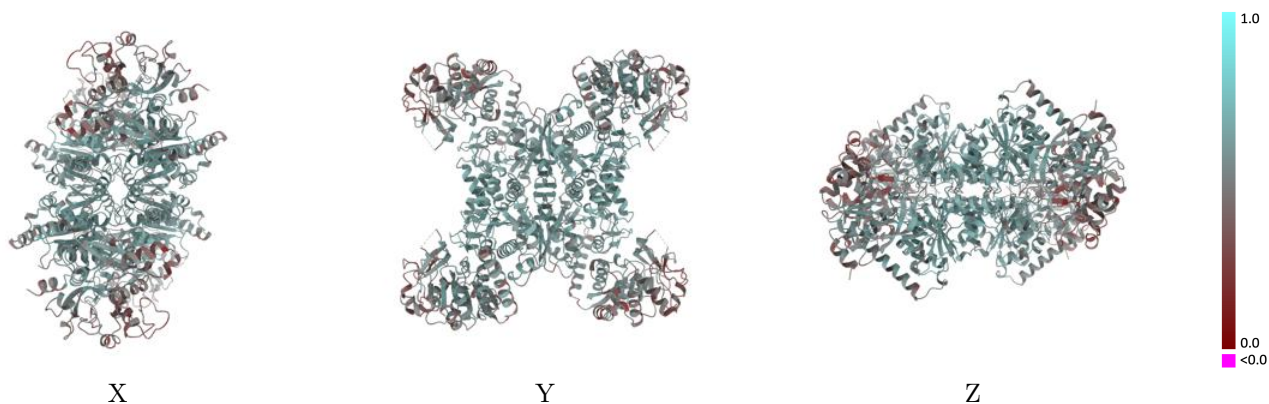
This section contains information regarding the fit between EMDB map EMD-24497 and PDB model 7RKH. Per-residue inclusion information can be found in section [3](#) on page [7](#).

9.1 Map-model overlay [i](#)



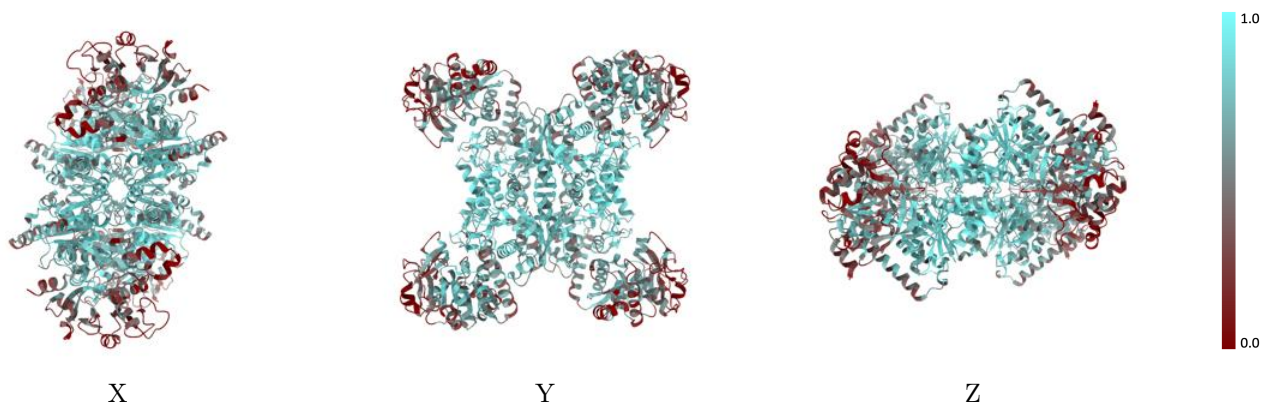
The images above show the 3D surface view of the map at the recommended contour level 1.61 at 50% transparency in yellow overlaid with a ribbon representation of the model coloured in blue. These images allow for the visual assessment of the quality of fit between the atomic model and the map.

9.2 Q-score mapped to coordinate model [i](#)



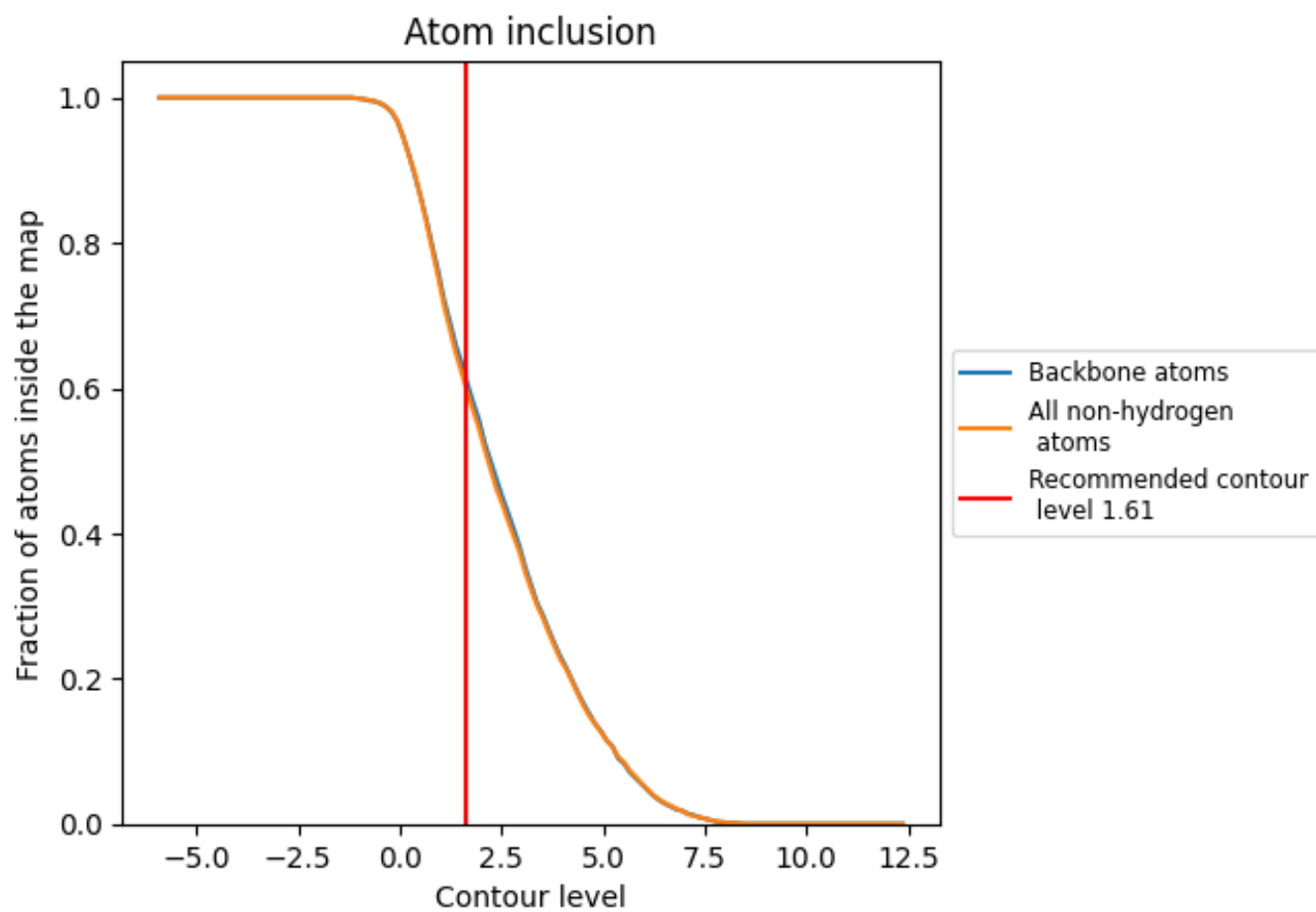
The images above show the model with each residue coloured according to its Q-score. This shows their resolvability in the map with higher Q-score values reflecting better resolvability. Please note: Q-score is calculating the resolvability of atoms, and thus high values are only expected at resolutions at which atoms can be resolved. Low Q-score values may therefore be expected for many entries.

9.3 Atom inclusion mapped to coordinate model [i](#)



The images above show the model with each residue coloured according to its atom inclusion. This shows to what extent they are inside the map at the recommended contour level (1.61).











9.4 Atom inclusion [i](#)



At the recommended contour level, 62% of all backbone atoms, 60% of all non-hydrogen atoms, are inside the map.

9.5 Map-model fit summary

The table lists the average atom inclusion at the recommended contour level (1.61) and Q-score for the entire model and for each chain.

Chain	Atom inclusion	Q-score
All	 0.6050	 0.5350
A	 0.6120	 0.5350
B	 0.6120	 0.5350
C	 0.6140	 0.5350
D	 0.6140	 0.5350

