



Full wwPDB EM Validation Report ⓘ

Oct 13, 2024 – 04:52 pm BST

PDB ID : 7QXB
EMDB ID : EMD-14197
Title : Cryo-EM map of human telomerase-DNA-TPP1-POT1 complex (sharpened map)
Authors : Sekne, Z.; Ghanim, G.E.; van Roon, A.M.M.; Nguyen, T.H.D.
Deposited on : 2022-01-26
Resolution : 3.90 Å (reported)
Based on initial model : 7BG9

This is a Full wwPDB EM Validation Report for a publicly released PDB entry.

We welcome your comments at validation@mail.wwpdb.org

A user guide is available at

<https://www.wwpdb.org/validation/2017/EMValidationReportHelp>

with specific help available everywhere you see the ⓘ symbol.

The types of validation reports are described at

<http://www.wwpdb.org/validation/2017/FAQs#types>.

The following versions of software and data (see [references ⓘ](#)) were used in the production of this report:

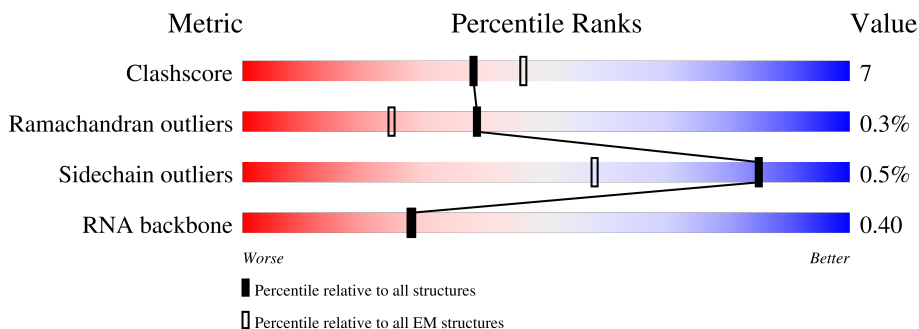
EMDB validation analysis : 0.0.1.dev113
MolProbity : 4.02b-467
Percentile statistics : 20231227.v01 (using entries in the PDB archive December 27th 2023)
MapQ : 1.9.13
Ideal geometry (proteins) : Engh & Huber (2001)
Ideal geometry (DNA, RNA) : Parkinson et al. (1996)
Validation Pipeline (wwPDB-VP) : 2.39

1 Overall quality at a glance

The following experimental techniques were used to determine the structure:
ELECTRON MICROSCOPY

The reported resolution of this entry is 3.90 Å.

Percentile scores (ranging between 0-100) for global validation metrics of the entry are shown in the following graphic. The table shows the number of entries on which the scores are based.



Metric	Whole archive (#Entries)	EM structures (#Entries)
Clashscore	210492	15764
Ramachandran outliers	207382	16835
Sidechain outliers	206894	16415
RNA backbone	6643	2191

The table below summarises the geometric issues observed across the polymeric chains and their fit to the map. The red, orange, yellow and green segments of the bar indicate the fraction of residues that contain outliers for ≥ 3 , 2, 1 and 0 types of geometric quality criteria respectively. A grey segment represents the fraction of residues that are not modelled. The numeric value for each fraction is indicated below the corresponding segment, with a dot representing fractions $\leq 5\%$. The upper red bar (where present) indicates the fraction of residues that have poor fit to the EM map (all-atom inclusion $< 40\%$). The numeric value is given above the bar.

Mol	Chain	Length	Quality of chain
1	A	1132	
2	B	451	
3	L	130	
4	M	166	
5	N	30	
6	O	458	
7	P	634	

2 Entry composition [i](#)

There are 7 unique types of molecules in this entry. The entry contains 17053 atoms, of which 0 are hydrogens and 0 are deuteriums.

In the tables below, the AltConf column contains the number of residues with at least one atom in alternate conformation and the Trace column contains the number of residues modelled with at most 2 atoms.

- Molecule 1 is a protein called Telomerase reverse transcriptase.

Mol	Chain	Residues	Atoms					AltConf	Trace
			Total	C	N	O	S		
1	A	951	7626	4892	1418	1280	36	0	0

- Molecule 2 is a RNA chain called human telomerase RNA.

Mol	Chain	Residues	Atoms					AltConf	Trace
			Total	C	N	O	P		
2	B	256	5431	2420	947	1808	256	0	0

- Molecule 3 is a protein called Histone H2A.

Mol	Chain	Residues	Atoms				AltConf	Trace
			Total	C	N	O		
3	L	82	643	403	128	112	0	0

- Molecule 4 is a protein called Histone H2B.

Mol	Chain	Residues	Atoms					AltConf	Trace
			Total	C	N	O	S		
4	M	90	699	440	123	134	2	0	0

- Molecule 5 is a DNA chain called Telomeric DNA.

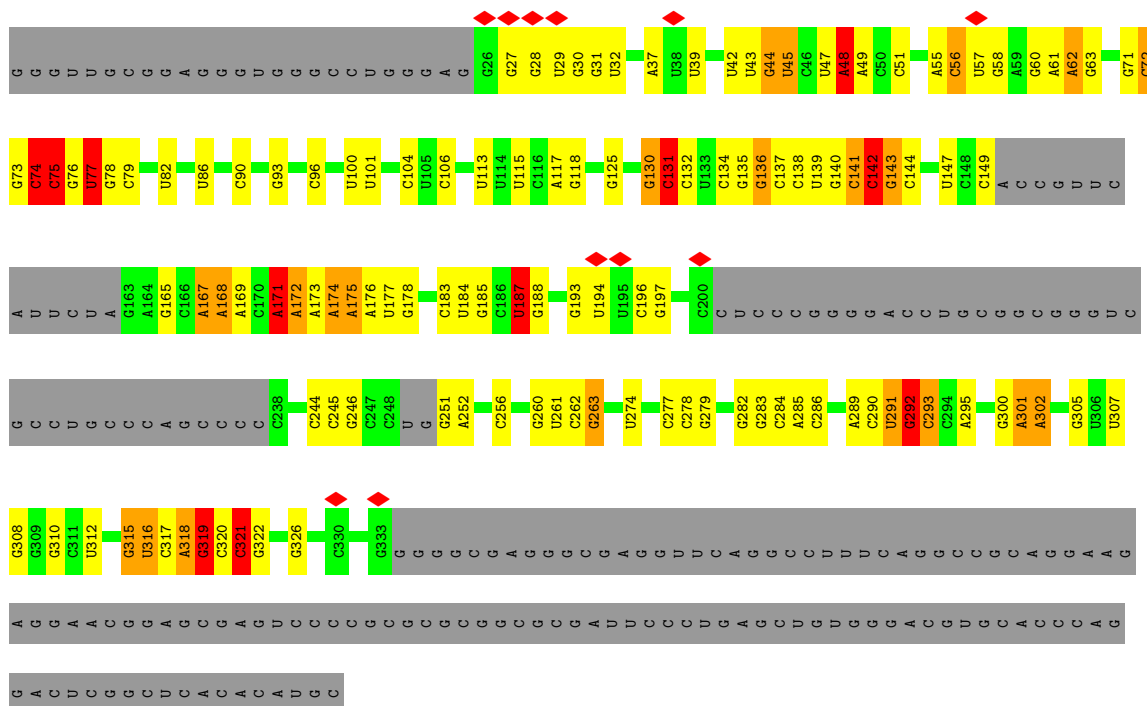
Mol	Chain	Residues	Atoms					AltConf	Trace
			Total	C	N	O	P		
5	N	22	461	220	86	134	21	0	0

- Molecule 6 is a protein called Adrenocortical dysplasia homolog (Mouse), isoform CRA_a.

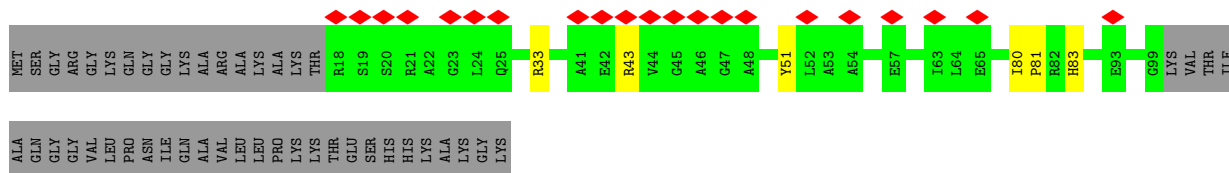
Mol	Chain	Residues	Atoms					AltConf	Trace
			Total	C	N	O	S		
6	O	120	955	603	171	177	4	0	0

- Molecule 7 is a protein called Protection of telomeres protein 1.

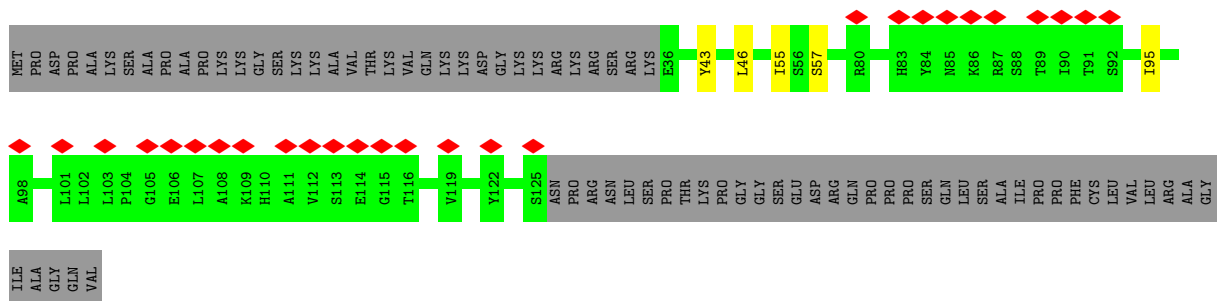
Mol	Chain	Residues	Atoms			AltConf	Trace	
			Total	C	N			O
7	P	251	1238	736	251	251	0	0



• Molecule 3: Histone H2A

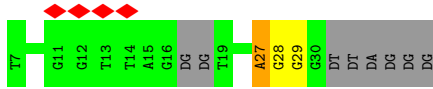


• Molecule 4: Histone H2B

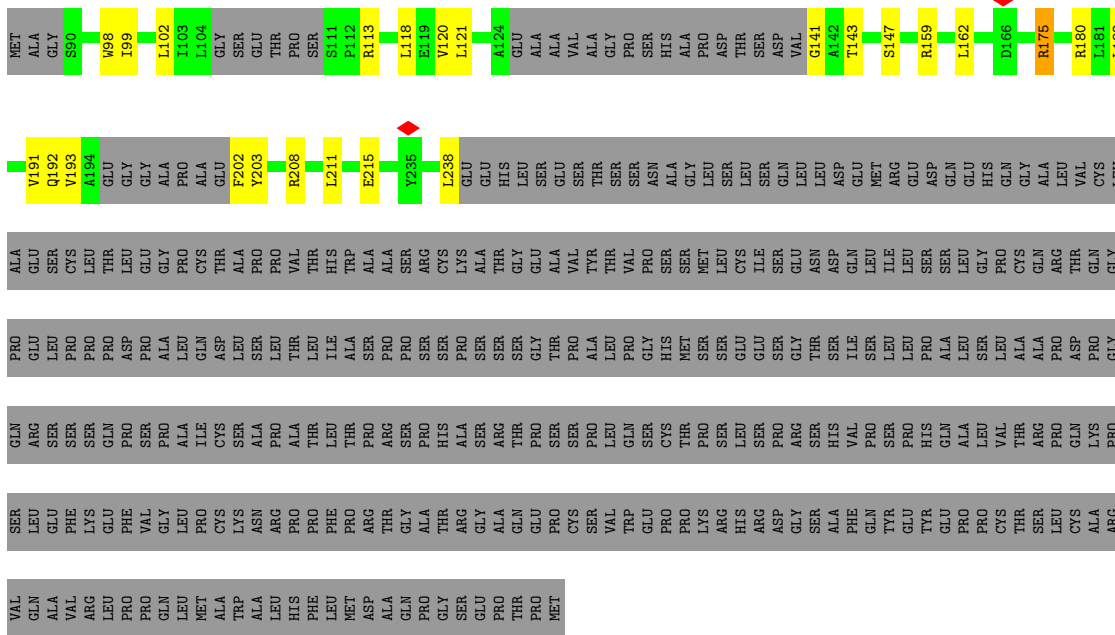


• Molecule 5: Telomeric DNA

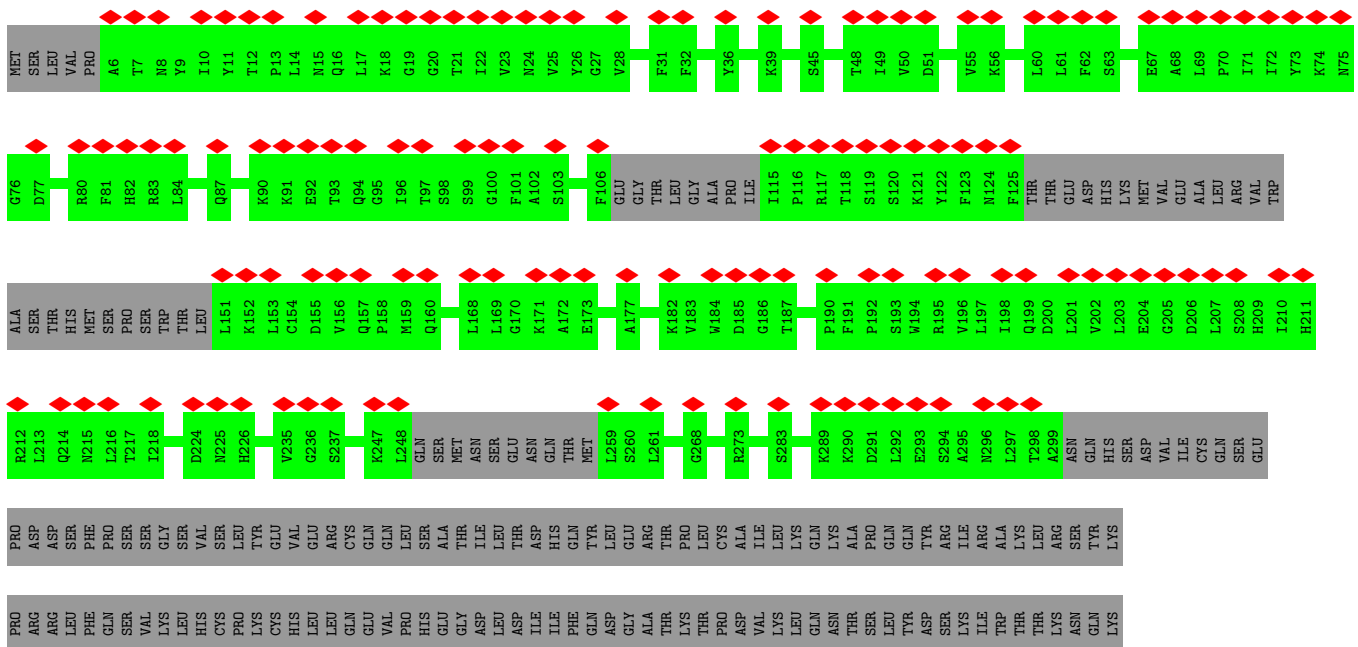




• Molecule 6: Adrenocortical dysplasia homolog (Mouse), isoform CRA_a



• Molecule 7: Protection of telomeres protein 1



GLY ARG
PHE LEU LYS
VAL VAL ALA
GLN GLY VAL
HIS HIS
PHE VAL
LEU VAL LYS
ASN TYR ASN
ASN GLY
GLY ILE
LEU LEU
PRO CYS
LEU LEU
ASN LEU
ILE ILE
GLU GLU
GLY GLY

PRO PHE
LEU LEU
ILE VAL
GLN GLY
THR GLY
ILE THR
HIS HIS
LEU VAL
HIS HIS
TYR ASN
GLY GLY
CYS CYS
LYS LYS
GLN GLN
CYS PRO
SER LEU
SER SER
LEU LEU
ASN ASN
ARG ARG
CYS CYS
SER ILE
ILE GLN
GLN ASN
LEU LEU
ILE ILE
ASN ASN
SER SER
LEU LEU
VAL VAL
THR ASP
LYS LYS
THR THR
SER SER
SER SER
TRP TRP
CYS CYS
ILE ILE
PRO PRO
SER SER
SER SER
ASN ASN
LYS LYS
PHE PHE
ALA ALA
ASN ASN
SER SER
PRO PRO
VAL VAL
GLY GLY
ILE ILE
PRO PRO
VAL VAL
ARG ARG
LEU LEU
SER SER
GLN GLN
TYR TYR
VAL VAL
PHE PHE
VAL VAL
MET MET
GLU GLU
THR THR
PHE PHE
LEU LEU
SER SER
ASP ASP

GLY THR
THR GLY
VAL VAL
ASN ASN
GLY GLY
THR THR
ALA ALA
TYR TYR
LEU LEU
MET MET
ASP ASP
SER SER
SER SER
LYS LYS
PHE PHE
GLN GLN
PHE PHE
GLN GLN
ILE ILE
PRO PRO
ALA ALA
SER SER
GLU GLU
VAL VAL
LEU LEU
MET MET
ASP ASP
ASP ASP
SER SER
LEU LEU
GLN GLN
LYS LYS
SER SER
VAL VAL
ASP ASP
MET MET
ILE ILE
MET MET
ASP ASP
MET MET
PHE PHE
CYS CYS
PRO PRO
PRO PRO
GLY GLY
ILE ILE
LYS LYS
ILE ILE
ASP ASP
ALA ALA
TYR TYR
PRO PRO
TRP TRP
LEU LEU
GLU GLU
CYS CYS
PHE PHE
ILE ILE
LYS LYS
SER SER
TYR TYR

ASN VAL
THR THR
ASN ASN
GLY GLY
THR THR
ASP ASP
ASN ASN
GLN GLN
ILE ILE
CYS CYS
TYR TYR
GLN GLN
ILE ILE
PHE PHE
ASP ASP
THR THR
THR THR
VAL VAL
ALA ALA
GLU GLU
ASP ASP
VAL VAL
ILE ILE

4 Experimental information

Property	Value	Source
EM reconstruction method	SINGLE PARTICLE	Depositor
Imposed symmetry	POINT, C1	Depositor
Number of particles used	192871	Depositor
Resolution determination method	FSC 0.143 CUT-OFF	Depositor
CTF correction method	PHASE FLIPPING AND AMPLITUDE CORRECTION	Depositor
Microscope	FEI TITAN KRIOS	Depositor
Voltage (kV)	300	Depositor
Electron dose ($e^-/\text{\AA}^2$)	48	Depositor
Minimum defocus (nm)	1000	Depositor
Maximum defocus (nm)	3000	Depositor
Magnification	45871	Depositor
Image detector	GATAN K3 (6k x 4k)	Depositor
Maximum map value	0.071	Depositor
Minimum map value	-0.040	Depositor
Average map value	0.000	Depositor
Map value standard deviation	0.002	Depositor
Recommended contour level	0.009	Depositor
Map size (Å)	305.2, 305.2, 305.2	wwPDB
Map dimensions	280, 280, 280	wwPDB
Map angles (°)	90.0, 90.0, 90.0	wwPDB
Pixel spacing (Å)	1.09, 1.09, 1.09	Depositor

5 Model quality i

5.1 Standard geometry i

The Z score for a bond length (or angle) is the number of standard deviations the observed value is removed from the expected value. A bond length (or angle) with $|Z| > 5$ is considered an outlier worth inspection. RMSZ is the root-mean-square of all Z scores of the bond lengths (or angles).

Mol	Chain	Bond lengths		Bond angles	
		RMSZ	# Z >5	RMSZ	# Z >5
1	A	0.62	5/7810 (0.1%)	0.80	2/10584 (0.0%)
2	B	0.57	0/6055	1.13	20/9426 (0.2%)
3	L	0.51	0/650	0.66	0/874
4	M	0.49	0/710	0.60	0/957
5	N	0.62	0/517	1.09	0/798
6	O	0.36	0/968	0.72	5/1307 (0.4%)
7	P	0.37	0/1234	0.48	0/1711
All	All	0.57	5/17944 (0.0%)	0.92	27/25657 (0.1%)

Chiral center outliers are detected by calculating the chiral volume of a chiral center and verifying if the center is modelled as a planar moiety or with the opposite hand. A planarity outlier is detected by checking planarity of atoms in a peptide group, atoms in a mainchain group or atoms of a sidechain that are expected to be planar.

Mol	Chain	#Chirality outliers	#Planarity outliers
2	B	0	8
5	N	0	1
All	All	0	9

All (5) bond length outliers are listed below:

Mol	Chain	Res	Type	Atoms	Z	Observed(Å)	Ideal(Å)
1	A	638	TYR	CE1-CZ	9.25	1.50	1.38
1	A	638	TYR	CE2-CZ	6.94	1.47	1.38
1	A	638	TYR	CG-CD1	6.91	1.48	1.39
1	A	638	TYR	CG-CD2	6.53	1.47	1.39
1	A	547	TRP	CD2-CE2	5.63	1.48	1.41

All (27) bond angle outliers are listed below:

Mol	Chain	Res	Type	Atoms	Z	Observed(°)	Ideal(°)
2	B	142	C	C2'-C3'-O3'	8.69	128.61	109.50
6	O	175	ARG	NE-CZ-NH2	7.52	124.06	120.30

Continued on next page...

Continued from previous page...

Mol	Chain	Res	Type	Atoms	Z	Observed(°)	Ideal(°)
2	B	131	C	C5'-C4'-O4'	7.15	117.68	109.10
2	B	74	C	C1'-O4'-C4'	-7.02	104.29	109.90
6	O	175	ARG	NE-CZ-NH1	-6.75	116.92	120.30
2	B	174	A	C2'-C3'-O3'	6.60	124.25	113.70
6	O	208	ARG	NE-CZ-NH1	-6.42	117.09	120.30
6	O	208	ARG	NE-CZ-NH2	6.40	123.50	120.30
2	B	319	G	N9-C1'-C2'	-6.34	105.02	112.00
2	B	131	C	C1'-O4'-C4'	-6.29	104.87	109.90
1	A	522	ARG	NE-CZ-NH2	6.02	123.31	120.30
1	A	742	ARG	NE-CZ-NH2	5.95	123.27	120.30
2	B	131	C	O4'-C1'-N1	5.78	112.82	108.20
2	B	48	A	O4'-C1'-N9	5.74	112.79	108.20
2	B	73	G	O4'-C1'-N9	5.73	112.79	108.20
2	B	321	C	C4'-C3'-O3'	5.73	124.45	113.00
6	O	159	ARG	NE-CZ-NH1	-5.60	117.50	120.30
2	B	187	U	C2'-C3'-O3'	5.54	122.57	113.70
2	B	78	G	C5'-C4'-O4'	5.51	115.72	109.10
2	B	90	C	C5'-C4'-O4'	5.49	115.69	109.10
2	B	315	G	C2'-C3'-O3'	5.18	121.99	113.70
2	B	291	U	O4'-C1'-N1	5.14	112.32	108.20
2	B	75	C	N1-C1'-C2'	5.13	120.67	114.00
2	B	171	A	C2'-C3'-O3'	5.09	121.85	113.70
2	B	292	G	C2'-C3'-O3'	5.06	121.80	113.70
2	B	77	U	O4'-C1'-C2'	-5.03	100.77	105.80
2	B	142	C	P-O3'-C3'	5.01	125.71	119.70

There are no chirality outliers.

All (9) planarity outliers are listed below:

Mol	Chain	Res	Type	Group
2	B	136	G	Sidechain
2	B	256	C	Sidechain
2	B	292	G	Sidechain
2	B	319	G	Sidechain
2	B	51	C	Sidechain
2	B	72	C	Sidechain
2	B	75	C	Sidechain
2	B	77	U	Sidechain
5	N	27	DA	Sidechain

5.2 Too-close contacts [i](#)

In the following table, the Non-H and H(model) columns list the number of non-hydrogen atoms and hydrogen atoms in the chain respectively. The H(added) column lists the number of hydrogen atoms added and optimized by MolProbity. The Clashes column lists the number of clashes within the asymmetric unit, whereas Symm-Clashes lists symmetry-related clashes.

Mol	Chain	Non-H	H(model)	H(added)	Clashes	Symm-Clashes
1	A	7626	0	7871	152	0
2	B	5431	0	2767	66	0
3	L	643	0	680	10	0
4	M	699	0	712	9	0
5	N	461	0	253	2	0
6	O	955	0	962	22	0
7	P	1238	0	530	0	0
All	All	17053	0	13775	220	0

The all-atom clashscore is defined as the number of clashes found per 1000 atoms (including hydrogen atoms). The all-atom clashscore for this structure is 7.

All (220) close contacts within the same asymmetric unit are listed below, sorted by their clash magnitude.

Atom-1	Atom-2	Interatomic distance (Å)	Clash overlap (Å)
6:O:192:GLN:HB2	6:O:203:TYR:CD1	1.85	1.11
1:A:506:GLN:OE1	2:B:305:G:H4'	1.53	1.06
2:B:302:A:N7	4:M:57:SER:HB2	1.81	0.95
1:A:375:THR:OG1	2:B:284:C:H3'	1.68	0.94
2:B:244:C:H5''	3:L:43:ARG:NH2	1.88	0.88
1:A:831:ILE:HD13	1:A:838:SER:HB3	1.56	0.88
2:B:244:C:H5''	3:L:43:ARG:CZ	2.09	0.83
1:A:375:THR:HG1	2:B:284:C:H3'	1.42	0.82
1:A:922:MET:HG2	1:A:923:PRO:HD2	1.64	0.78
6:O:102:LEU:HD22	6:O:113:ARG:NH1	1.98	0.77
1:A:981:LYS:HE3	1:A:1004:ILE:HG12	1.68	0.75
1:A:943:GLN:OE1	1:A:1003:LYS:NZ	2.20	0.73
1:A:620:ARG:CZ	2:B:47:U:C5	2.72	0.72
1:A:581:TRP:CE3	1:A:584:LEU:HD23	2.25	0.70
1:A:922:MET:CG	1:A:923:PRO:CD	2.71	0.69
1:A:474:PRO:HD2	1:A:477:LEU:HD12	1.75	0.69
1:A:1086:ARG:O	1:A:1090:VAL:HG23	1.91	0.68
1:A:530:PRO:HB3	2:B:318:A:H61	1.59	0.68
1:A:481:ARG:NH2	2:B:183:C:OP2	2.27	0.68
1:A:922:MET:HG2	1:A:923:PRO:CD	2.23	0.67

Continued on next page...

Continued from previous page...

Atom-1	Atom-2	Interatomic distance (Å)	Clash overlap (Å)
1:A:1027:LYS:NZ	2:B:312:U:OP1	2.21	0.67
1:A:101:PHE:CD2	1:A:121:SER:HB2	2.31	0.66
1:A:922:MET:CG	1:A:923:PRO:HD2	2.26	0.65
1:A:127:VAL:HG22	1:A:170:VAL:HG23	1.79	0.65
6:O:192:GLN:HB2	6:O:203:TYR:HD1	1.59	0.65
6:O:102:LEU:HD22	6:O:113:ARG:HH12	1.59	0.65
3:L:80:ILE:HG22	3:L:83:HIS:CE1	2.32	0.65
1:A:15:ARG:HA	1:A:21:VAL:HG21	1.78	0.64
1:A:665:LEU:HD21	1:A:729:ILE:HD12	1.78	0.64
1:A:658:VAL:HG13	1:A:837:LEU:HD11	1.80	0.63
1:A:980:LEU:HD21	5:N:27:DA:N3	2.13	0.62
1:A:399:ASN:HB3	1:A:472:LEU:HA	1.81	0.62
2:B:244:C:OP2	3:L:43:ARG:NH2	2.27	0.62
2:B:115:U:C2	2:B:175:A:C2	2.87	0.62
2:B:302:A:C8	4:M:57:SER:HB2	2.34	0.62
3:L:80:ILE:HG12	3:L:81:PRO:HD2	1.82	0.62
6:O:120:VAL:HG13	6:O:120:VAL:O	2.00	0.60
6:O:192:GLN:HB2	6:O:203:TYR:CE1	2.33	0.60
2:B:321:C:N4	3:L:33:ARG:NH2	2.49	0.60
1:A:694:VAL:HG12	1:A:940:LEU:HD23	1.83	0.59
1:A:943:GLN:HA	1:A:1000:ASN:ND2	2.17	0.59
1:A:1006:LEU:HA	1:A:1077:ALA:HB1	1.82	0.59
1:A:690:TRP:HE1	1:A:991:VAL:HG13	1.68	0.59
1:A:1033:LEU:HA	1:A:1036:ILE:HD12	1.85	0.59
6:O:180:ARG:HG2	6:O:215:GLU:HG2	1.85	0.58
2:B:316:U:C2	4:M:43:TYR:CE2	2.91	0.58
1:A:569:GLN:HE22	1:A:952:THR:HA	1.69	0.58
1:A:387:TRP:HH2	2:B:290:C:C6	2.22	0.57
1:A:369:ARG:HH21	1:A:370:PRO:HD2	1.70	0.57
1:A:865:ARG:HD3	1:A:870:PHE:CE1	2.39	0.56
1:A:943:GLN:HG2	1:A:1000:ASN:OD1	2.06	0.56
1:A:992:ASN:HB2	1:A:996:THR:HB	1.86	0.56
1:A:390:ARG:NH1	2:B:290:C:OP2	2.39	0.56
1:A:377:ARG:HH12	2:B:283:G:H3'	1.71	0.56
2:B:316:U:C2	4:M:43:TYR:HE2	2.24	0.56
1:A:529:VAL:HG13	1:A:533:GLU:HB3	1.86	0.56
1:A:544:PHE:O	1:A:547:TRP:HB3	2.06	0.56
2:B:140:G:H2'	2:B:141:C:C5'	2.36	0.56
1:A:831:ILE:HD13	1:A:838:SER:CB	2.30	0.56
1:A:354:LEU:HD12	2:B:289:A:H5''	1.88	0.55
1:A:983:HIS:CD2	1:A:985:LEU:H	2.25	0.55

Continued on next page...

Continued from previous page...

Atom-1	Atom-2	Interatomic distance (Å)	Clash overlap (Å)
1:A:342:ARG:HD3	1:A:558:ARG:HD3	1.89	0.55
1:A:592:HIS:HA	1:A:595:ARG:HE	1.72	0.55
1:A:680:VAL:HG12	1:A:685:ASP:CG	2.28	0.55
1:A:562:TYR:CE2	1:A:581:TRP:CZ2	2.95	0.54
1:A:635:ASN:ND2	2:B:48:A:N3	2.52	0.54
1:A:377:ARG:HH11	2:B:284:C:H5	1.55	0.54
6:O:118:LEU:HD11	6:O:147:SER:HB2	1.90	0.54
1:A:365:PHE:CE1	1:A:540:ILE:HG23	2.42	0.54
1:A:472:LEU:HD21	1:A:552:TYR:OH	2.08	0.54
1:A:372:MET:HG2	1:A:380:PRO:HD3	1.90	0.54
1:A:15:ARG:CZ	2:B:62:A:C8	2.91	0.54
6:O:120:VAL:HG21	6:O:175:ARG:HG2	1.90	0.54
1:A:691:ARG:O	1:A:695:LEU:HG	2.07	0.54
1:A:85:LEU:CD2	1:A:97:LEU:HD23	2.37	0.53
3:L:80:ILE:CG1	3:L:81:PRO:HD2	2.38	0.53
1:A:620:ARG:CZ	2:B:48:A:C5	2.91	0.53
1:A:562:TYR:CE2	1:A:581:TRP:CH2	2.96	0.53
1:A:1080:LEU:HD21	1:A:1123:LEU:HG	1.91	0.53
6:O:193:VAL:HG21	6:O:238:LEU:HD21	1.91	0.53
1:A:86:GLN:HB2	1:A:116:THR:HG23	1.91	0.53
2:B:71:G:H2'	2:B:72:C:C6	2.44	0.53
1:A:665:LEU:HD21	1:A:729:ILE:CD1	2.41	0.51
2:B:130:G:H2'	2:B:131:C:H5'	1.92	0.51
1:A:708:PHE:CZ	1:A:937:THR:HA	2.46	0.51
1:A:15:ARG:NH1	2:B:62:A:H8	2.09	0.50
1:A:85:LEU:HD21	1:A:97:LEU:HD23	1.93	0.50
1:A:581:TRP:HE1	1:A:585:GLN:HE21	1.59	0.50
2:B:184:U:C5	2:B:185:G:C8	3.00	0.50
1:A:922:MET:HG3	1:A:923:PRO:CD	2.42	0.49
1:A:399:ASN:HB3	1:A:472:LEU:CA	2.43	0.49
1:A:562:TYR:CZ	1:A:581:TRP:CZ2	3.01	0.49
1:A:620:ARG:CZ	2:B:47:U:C6	2.96	0.49
6:O:182:LEU:HD23	6:O:211:LEU:HB3	1.94	0.49
1:A:168:TYR:CD1	1:A:773:MET:HG2	2.47	0.49
1:A:609:HIS:HA	1:A:616:LEU:HD22	1.94	0.49
1:A:407:VAL:HG11	2:B:187:U:C2	2.48	0.48
2:B:96:C:H1'	2:B:168:A:C4	2.48	0.48
4:M:46:LEU:CD2	4:M:55:ILE:HG23	2.43	0.48
1:A:506:GLN:OE1	2:B:305:G:C4'	2.44	0.48
1:A:561:PHE:N	1:A:578:LYS:HG3	2.28	0.48
1:A:685:ASP:HA	1:A:688:ARG:HE	1.79	0.48

Continued on next page...

Continued from previous page...

Atom-1	Atom-2	Interatomic distance (Å)	Clash overlap (Å)
1:A:747:VAL:CG1	1:A:790:VAL:HB	2.44	0.48
1:A:942:VAL:O	1:A:1000:ASN:ND2	2.33	0.48
1:A:610:ARG:HH21	1:A:618:THR:HG21	1.79	0.48
1:A:690:TRP:O	1:A:694:VAL:HG13	2.14	0.47
1:A:941:GLU:HB3	1:A:996:THR:HG21	1.95	0.47
2:B:171:A:C2	2:B:172:A:C4	3.02	0.47
1:A:942:VAL:H	1:A:992:ASN:HB3	1.79	0.47
1:A:534:HIS:NE2	2:B:315:G:H4'	2.29	0.47
2:B:143:G:H2'	2:B:144:C:C6	2.48	0.47
1:A:375:THR:CB	2:B:285:A:H5'	2.44	0.47
6:O:98:TRP:CE3	6:O:113:ARG:HD3	2.49	0.47
2:B:136:G:H2'	2:B:137:C:O4'	2.15	0.47
1:A:558:ARG:O	1:A:578:LYS:HD2	2.14	0.47
1:A:690:TRP:NE1	1:A:991:VAL:HG13	2.30	0.47
3:L:51:TYR:HB3	4:M:95:ILE:HD11	1.96	0.47
1:A:396:LEU:HD12	1:A:472:LEU:O	2.14	0.47
1:A:384:GLN:HG3	2:B:291:U:O2'	2.15	0.47
1:A:535:ARG:NH1	2:B:302:A:O2'	2.48	0.47
1:A:548:LEU:HD12	1:A:552:TYR:CB	2.45	0.46
1:A:127:VAL:CG2	1:A:170:VAL:HG23	2.44	0.46
2:B:263:G:C5	2:B:295:A:C2	3.04	0.46
2:B:302:A:C8	4:M:57:SER:CB	2.98	0.46
1:A:484:GLU:O	1:A:488:LEU:HG	2.15	0.46
1:A:1072:TRP:NE1	1:A:1104:SER:OG	2.39	0.46
6:O:191:VAL:C	6:O:203:TYR:HE1	2.19	0.46
6:O:191:VAL:HG22	6:O:202:PHE:CD1	2.51	0.46
1:A:658:VAL:HG13	1:A:837:LEU:CD1	2.44	0.46
1:A:1051:ASN:HD22	1:A:1056:LEU:HD11	1.81	0.46
2:B:100:U:C4	2:B:101:U:C5	3.04	0.46
3:L:80:ILE:HG22	3:L:83:HIS:ND1	2.31	0.46
6:O:141:GLY:HA3	6:O:162:LEU:HD12	1.98	0.46
1:A:620:ARG:NH1	2:B:47:U:C5	2.84	0.46
2:B:77:U:H5''	2:B:77:U:C6	2.51	0.45
2:B:172:A:C2	2:B:173:A:C5	3.05	0.45
2:B:244:C:C2	2:B:326:G:N2	2.84	0.45
1:A:375:THR:HA	2:B:285:A:H5'	1.98	0.45
1:A:451:LEU:CD1	1:A:583:LYS:HG3	2.47	0.45
2:B:251:G:H3'	2:B:252:A:C8	2.51	0.45
1:A:943:GLN:HA	1:A:1000:ASN:CG	2.36	0.45
1:A:929:PRO:HA	1:A:934:LEU:HD23	1.97	0.45
1:A:696:ARG:HH12	1:A:860:ASP:HA	1.80	0.45

Continued on next page...

Continued from previous page...

Atom-1	Atom-2	Interatomic distance (Å)	Clash overlap (Å)
1:A:38:LEU:HG	1:A:39:VAL:HG23	1.97	0.45
1:A:664:VAL:HG23	1:A:665:LEU:HD12	1.99	0.45
1:A:981:LYS:HD3	1:A:1004:ILE:HG23	1.99	0.45
1:A:1086:ARG:O	1:A:1090:VAL:CG2	2.61	0.45
1:A:371:TRP:HB3	1:A:380:PRO:HG3	1.99	0.44
1:A:592:HIS:ND1	1:A:632:PRO:HG2	2.31	0.44
1:A:717:TYR:HB3	1:A:831:ILE:CG1	2.48	0.44
2:B:140:G:H2'	2:B:141:C:H5''	1.99	0.44
1:A:521:ARG:HG2	1:A:537:ARG:CZ	2.47	0.44
1:A:508:LEU:HD21	1:A:549:MET:CB	2.48	0.44
1:A:583:LYS:HE3	1:A:587:ILE:HD11	1.99	0.44
1:A:995:GLN:HE22	1:A:1117:ALA:HB3	1.82	0.44
1:A:28:VAL:HG21	1:A:38:LEU:HD22	1.99	0.44
2:B:293:C:C6	2:B:293:C:H5''	2.52	0.44
2:B:113:U:C2	2:B:178:G:C2	3.06	0.44
4:M:46:LEU:HD22	4:M:55:ILE:HG23	2.00	0.44
6:O:121:LEU:HD12	6:O:143:THR:HG22	1.99	0.44
1:A:616:LEU:HD23	1:A:815:HIS:HB3	1.99	0.43
1:A:904:VAL:HG13	1:A:920:VAL:HB	2.00	0.43
3:L:80:ILE:CG1	3:L:81:PRO:CD	2.96	0.43
2:B:44:G:H4'	2:B:45:U:H5'	2.00	0.43
1:A:487:PHE:CZ	1:A:548:LEU:HD23	2.53	0.43
1:A:935:LEU:CD2	1:A:942:VAL:HG12	2.48	0.43
6:O:98:TRP:CD2	6:O:113:ARG:HD3	2.53	0.43
1:A:134:SER:HB3	1:A:137:TRP:HB2	2.01	0.43
1:A:345:PHE:CZ	1:A:555:GLU:HG3	2.53	0.43
1:A:521:ARG:HG2	1:A:537:ARG:NH2	2.33	0.43
1:A:987:LEU:HD13	1:A:1047:LEU:HA	2.01	0.43
1:A:1013:HIS:CD2	1:A:1089:TYR:OH	2.72	0.43
2:B:31:G:N2	2:B:32:U:H1'	2.33	0.43
2:B:167:A:H2'	2:B:168:A:C5	2.54	0.43
1:A:922:MET:HG3	1:A:923:PRO:HD3	1.99	0.43
1:A:83:ARG:HE	1:A:83:ARG:HB2	1.66	0.43
1:A:531:ALA:HA	2:B:301:A:C6	2.54	0.43
1:A:623:PHE:CD2	1:A:630:LEU:HD13	2.54	0.43
1:A:408:LEU:HD11	1:A:471:ARG:HD2	2.00	0.42
1:A:1006:LEU:O	1:A:1009:ALA:HB3	2.19	0.42
2:B:142:C:H4'	2:B:143:G:H5'	2.01	0.42
1:A:360:LEU:HD22	1:A:397:LEU:HD21	2.01	0.42
1:A:939:THR:HB	1:A:941:GLU:HG2	2.00	0.42
2:B:76:G:H2'	2:B:77:U:C5'	2.49	0.42

Continued on next page...

Continued from previous page...

Atom-1	Atom-2	Interatomic distance (Å)	Clash overlap (Å)
6:O:102:LEU:HB2	6:O:113:ARG:HH12	1.84	0.42
1:A:1044:TYR:CE2	1:A:1048:LYS:HE3	2.54	0.42
4:M:46:LEU:HD22	4:M:55:ILE:CG2	2.49	0.42
1:A:623:PHE:O	1:A:624:ILE:CG2	2.68	0.42
1:A:686:ILE:HB	1:A:985:LEU:HD11	2.02	0.42
1:A:17:HIS:CE1	1:A:179:GLY:HA3	2.54	0.42
6:O:102:LEU:CD2	6:O:113:ARG:HH12	2.31	0.42
1:A:548:LEU:HD12	1:A:552:TYR:HB3	2.01	0.42
5:N:28:DG:C6	5:N:29:DG:C6	3.07	0.42
1:A:539:GLU:HG2	1:A:543:LYS:HE3	2.02	0.41
1:A:1006:LEU:HD13	1:A:1077:ALA:HA	2.01	0.41
6:O:98:TRP:CZ3	6:O:99:ILE:HG12	2.55	0.41
1:A:327:GLU:N	1:A:327:GLU:OE1	2.53	0.41
1:A:740:CYS:HB2	1:A:764:SER:HB2	2.02	0.41
1:A:747:VAL:HG12	1:A:790:VAL:HB	2.03	0.41
6:O:102:LEU:HD13	6:O:113:ARG:HH22	1.85	0.41
1:A:751:ALA:HB2	2:B:56:C:O2'	2.21	0.41
1:A:1006:LEU:CA	1:A:1077:ALA:HB1	2.51	0.41
2:B:137:C:H2'	2:B:138:C:C6	2.56	0.41
1:A:590:ARG:O	1:A:594:LYS:HG2	2.20	0.41
1:A:691:ARG:O	1:A:694:VAL:HG22	2.21	0.41
1:A:942:VAL:HG22	1:A:992:ASN:HB3	2.03	0.41
1:A:1079:LEU:HD11	1:A:1097:ARG:HG2	2.03	0.41
1:A:1107:LEU:HD13	1:A:1115:LEU:HD12	2.03	0.41
1:A:462:TYR:HE2	2:B:106:C:OP2	2.04	0.41
1:A:687:HIS:NE2	1:A:988:ASP:HB2	2.36	0.41
1:A:1080:LEU:CD2	1:A:1123:LEU:HG	2.51	0.41
1:A:354:LEU:HB2	2:B:289:A:P	2.61	0.40
1:A:592:HIS:HA	1:A:595:ARG:NE	2.35	0.40
1:A:939:THR:O	1:A:940:LEU:HB2	2.20	0.40
1:A:1079:LEU:N	1:A:1096:LEU:HD21	2.36	0.40
2:B:72:C:C4	2:B:74:C:C4	3.09	0.40
6:O:191:VAL:C	6:O:203:TYR:CE1	2.93	0.40
2:B:117:A:C6	2:B:118:G:C5	3.09	0.40
2:B:136:G:C2	2:B:137:C:C2	3.10	0.40
1:A:531:ALA:HA	2:B:301:A:N1	2.37	0.40

There are no symmetry-related clashes.

5.3 Torsion angles [i](#)

5.3.1 Protein backbone [i](#)

In the following table, the Percentiles column shows the percent Ramachandran outliers of the chain as a percentile score with respect to all PDB entries followed by that with respect to all EM entries.

The Analysed column shows the number of residues for which the backbone conformation was analysed, and the total number of residues.

Mol	Chain	Analysed	Favoured	Allowed	Outliers	Percentiles	
1	A	943/1132 (83%)	885 (94%)	53 (6%)	5 (0%)	25	60
3	L	80/130 (62%)	79 (99%)	1 (1%)	0	100	100
4	M	88/166 (53%)	84 (96%)	4 (4%)	0	100	100
6	O	112/458 (24%)	111 (99%)	1 (1%)	0	100	100
7	P	243/634 (38%)	234 (96%)	9 (4%)	0	100	100
All	All	1466/2520 (58%)	1393 (95%)	68 (5%)	5 (0%)	38	70

All (5) Ramachandran outliers are listed below:

Mol	Chain	Res	Type
1	A	164	PRO
1	A	982	CYS
1	A	643	ARG
1	A	1087	VAL
1	A	1020	PRO

5.3.2 Protein sidechains [i](#)

In the following table, the Percentiles column shows the percent sidechain outliers of the chain as a percentile score with respect to all PDB entries followed by that with respect to all EM entries.

The Analysed column shows the number of residues for which the sidechain conformation was analysed, and the total number of residues.

Mol	Chain	Analysed	Rotameric	Outliers	Percentiles	
1	A	824/958 (86%)	819 (99%)	5 (1%)	84	88
3	L	64/99 (65%)	64 (100%)	0	100	100
4	M	77/140 (55%)	77 (100%)	0	100	100
6	O	106/390 (27%)	106 (100%)	0	100	100

Continued on next page...

Continued from previous page...

Mol	Chain	Analysed	Rotameric	Outliers	Percentiles
All	All	1071/1587 (68%)	1066 (100%)	5 (0%)	85 90

All (5) residues with a non-rotameric sidechain are listed below:

Mol	Chain	Res	Type
1	A	18	TYR
1	A	333	TYR
1	A	558	ARG
1	A	962	ARG
1	A	1074	CYS

Sometimes sidechains can be flipped to improve hydrogen bonding and reduce clashes. All (10) such sidechains are listed below:

Mol	Chain	Res	Type
1	A	53	GLN
1	A	388	GLN
1	A	500	HIS
1	A	666	ASN
1	A	700	GLN
1	A	969	ASN
1	A	983	HIS
1	A	1013	HIS
4	M	64	ASN
6	O	151	HIS

5.3.3 RNA [i](#)

Mol	Chain	Analysed	Backbone Outliers	Pucker Outliers
2	B	252/451 (55%)	73 (28%)	21 (8%)

All (73) RNA backbone outliers are listed below:

Mol	Chain	Res	Type
2	B	27	G
2	B	28	G
2	B	29	U
2	B	30	G
2	B	37	A
2	B	39	U

Continued on next page...

Continued from previous page...

Mol	Chain	Res	Type
2	B	43	U
2	B	45	U
2	B	48	A
2	B	49	A
2	B	55	A
2	B	56	C
2	B	57	U
2	B	58	G
2	B	60	G
2	B	61	A
2	B	62	A
2	B	63	G
2	B	74	C
2	B	75	C
2	B	77	U
2	B	79	C
2	B	82	U
2	B	86	U
2	B	93	G
2	B	104	C
2	B	125	G
2	B	131	C
2	B	132	C
2	B	134	C
2	B	135	G
2	B	139	U
2	B	141	C
2	B	142	C
2	B	143	G
2	B	147	U
2	B	149	C
2	B	165	G
2	B	167	A
2	B	168	A
2	B	169	A
2	B	172	A
2	B	175	A
2	B	177	U
2	B	187	U
2	B	188	G
2	B	193	G
2	B	194	U

Continued on next page...

Continued from previous page...

Mol	Chain	Res	Type
2	B	196	C
2	B	197	G
2	B	246	G
2	B	260	G
2	B	261	U
2	B	262	C
2	B	263	G
2	B	274	U
2	B	277	C
2	B	278	C
2	B	279	G
2	B	282	G
2	B	286	C
2	B	292	G
2	B	293	C
2	B	301	A
2	B	302	A
2	B	308	G
2	B	310	G
2	B	316	U
2	B	317	C
2	B	318	A
2	B	319	G
2	B	320	C
2	B	322	G

All (21) RNA pucker outliers are listed below:

Mol	Chain	Res	Type
2	B	42	U
2	B	44	G
2	B	60	G
2	B	74	C
2	B	130	G
2	B	142	C
2	B	167	A
2	B	171	A
2	B	174	A
2	B	176	A
2	B	187	U
2	B	245	C
2	B	260	G

Continued on next page...

Continued from previous page...

Mol	Chain	Res	Type
2	B	261	U
2	B	262	C
2	B	282	G
2	B	292	G
2	B	300	G
2	B	307	U
2	B	319	G
2	B	321	C

5.4 Non-standard residues in protein, DNA, RNA chains [i](#)

There are no non-standard protein/DNA/RNA residues in this entry.

5.5 Carbohydrates [i](#)

There are no oligosaccharides in this entry.

5.6 Ligand geometry [i](#)

There are no ligands in this entry.

5.7 Other polymers [i](#)

There are no such residues in this entry.

5.8 Polymer linkage issues [i](#)

There are no chain breaks in this entry.

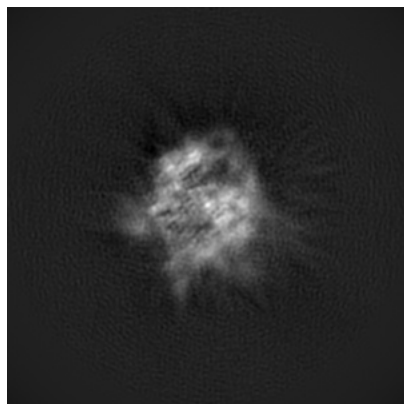
6 Map visualisation [i](#)

This section contains visualisations of the EMDB entry EMD-14197. These allow visual inspection of the internal detail of the map and identification of artifacts.

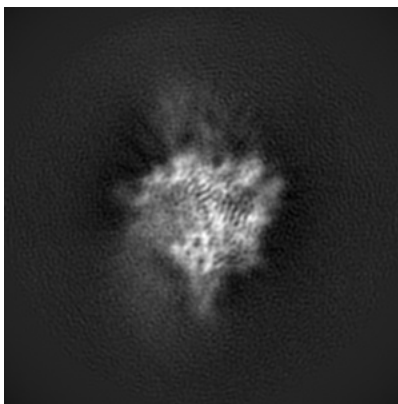
Images derived from a raw map, generated by summing the deposited half-maps, are presented below the corresponding image components of the primary map to allow further visual inspection and comparison with those of the primary map.

6.1 Orthogonal projections [i](#)

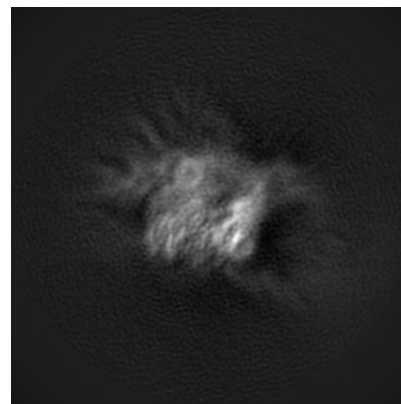
6.1.1 Primary map



X

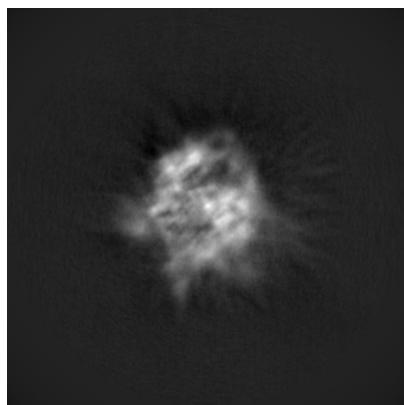


Y

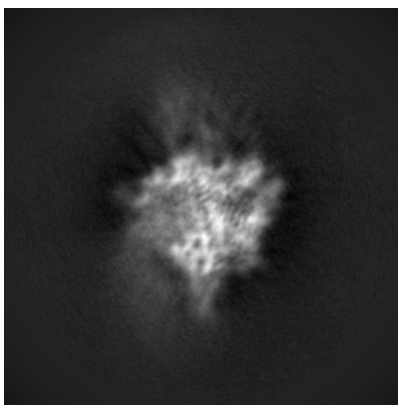


Z

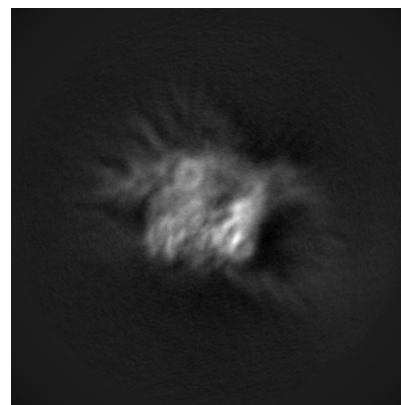
6.1.2 Raw map



X



Y

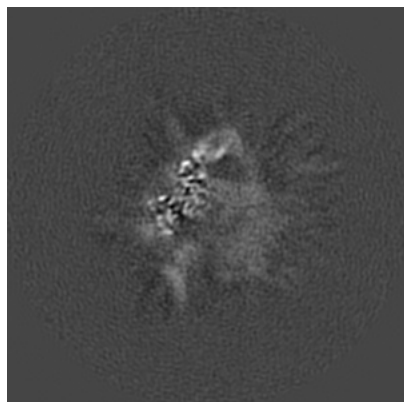


Z

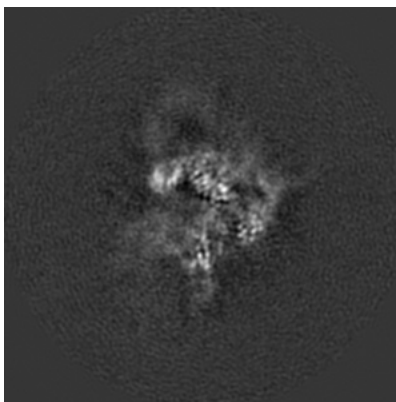
The images above show the map projected in three orthogonal directions.

6.2 Central slices [i](#)

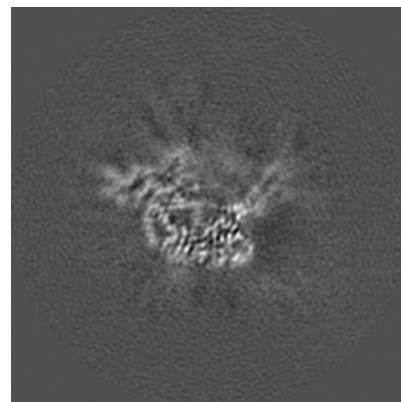
6.2.1 Primary map



X Index: 140

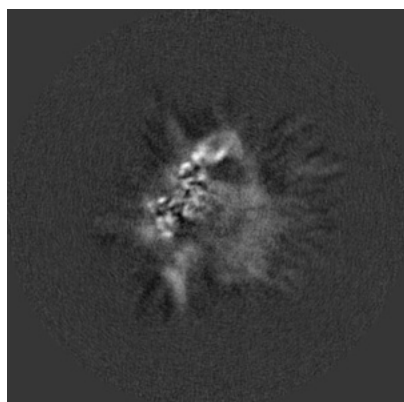


Y Index: 140

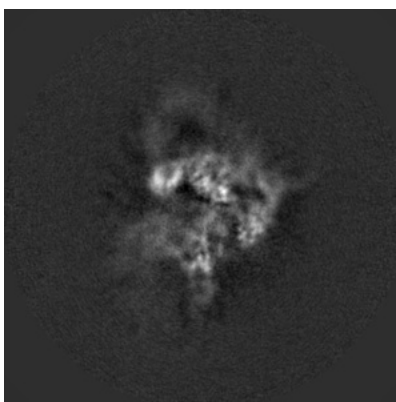


Z Index: 140

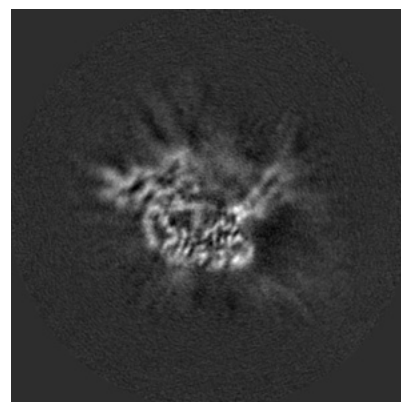
6.2.2 Raw map



X Index: 140



Y Index: 140

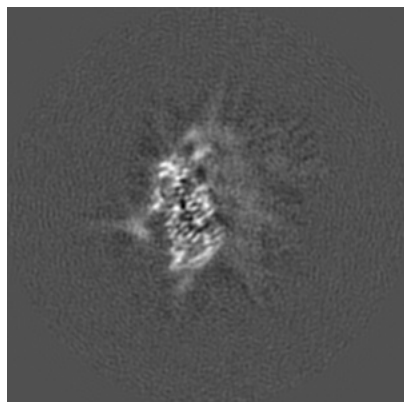


Z Index: 140

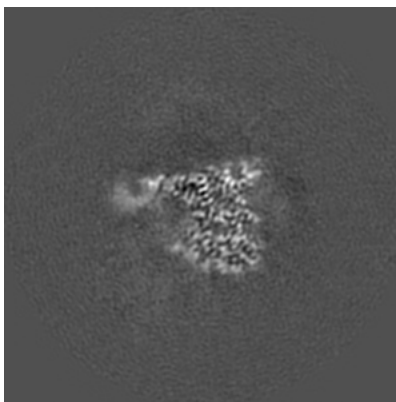
The images above show central slices of the map in three orthogonal directions.

6.3 Largest variance slices [i](#)

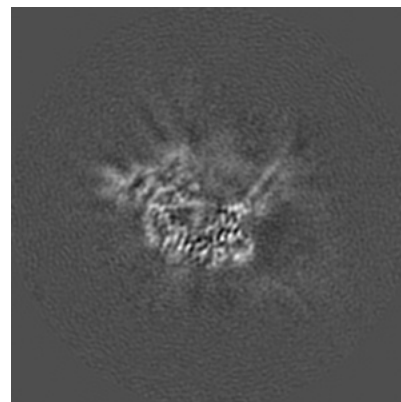
6.3.1 Primary map



X Index: 157

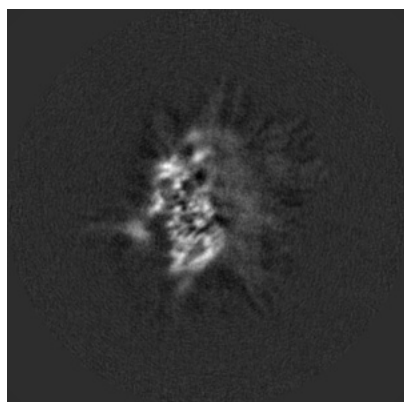


Y Index: 119

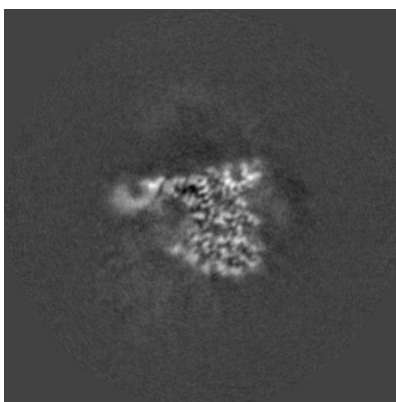


Z Index: 141

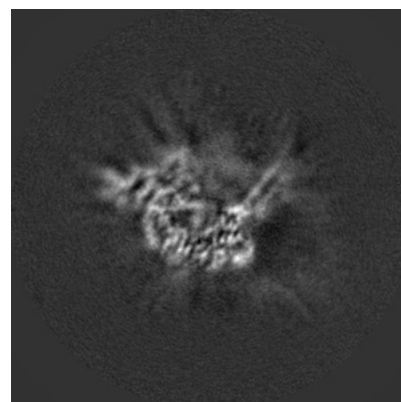
6.3.2 Raw map



X Index: 158



Y Index: 119

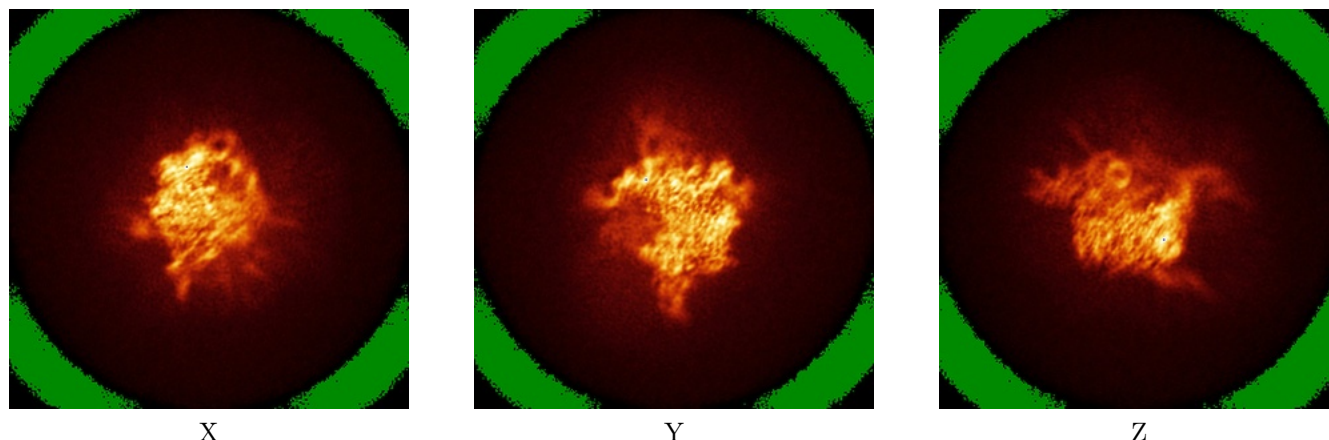


Z Index: 141

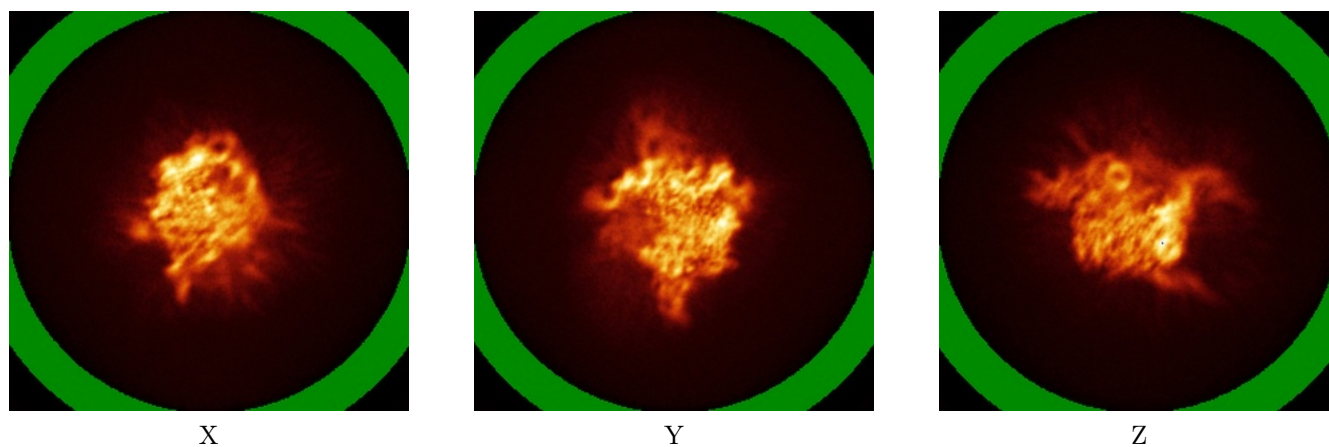
The images above show the largest variance slices of the map in three orthogonal directions.

6.4 Orthogonal standard-deviation projections (False-color) [i](#)

6.4.1 Primary map



6.4.2 Raw map



The images above show the map standard deviation projections with false color in three orthogonal directions. Minimum values are shown in green, max in blue, and dark to light orange shades represent small to large values respectively.

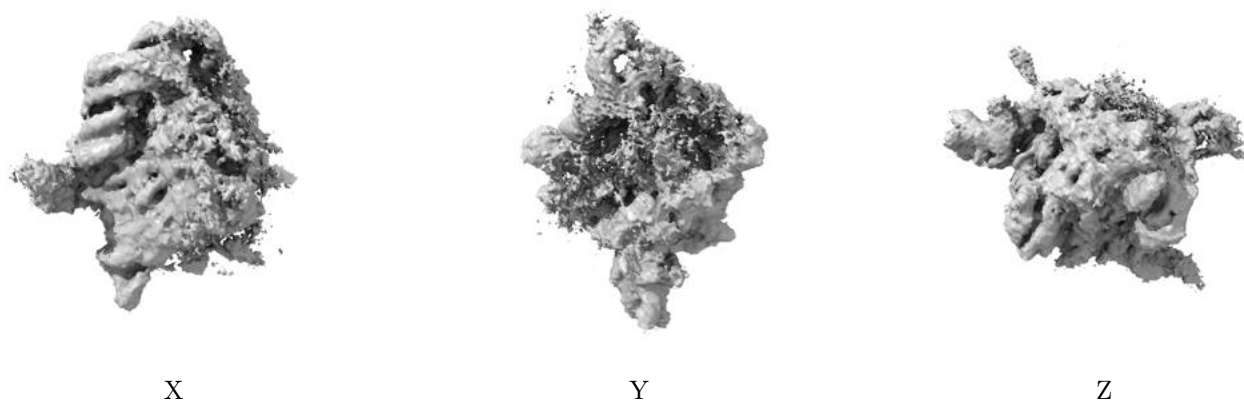
6.5 Orthogonal surface views [i](#)

6.5.1 Primary map



The images above show the 3D surface view of the map at the recommended contour level 0.009. These images, in conjunction with the slice images, may facilitate assessment of whether an appropriate contour level has been provided.

6.5.2 Raw map



These images show the 3D surface of the raw map. The raw map's contour level was selected so that its surface encloses the same volume as the primary map does at its recommended contour level.

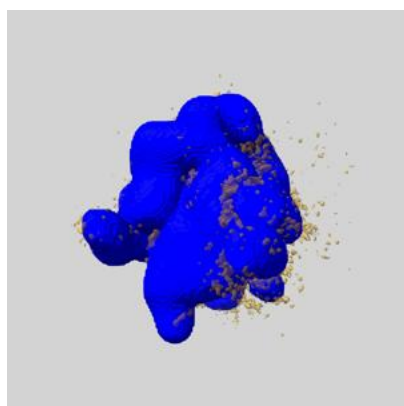
6.6 Mask visualisation [i](#)

This section shows the 3D surface view of the primary map at 50% transparency overlaid with the specified mask at 0% transparency

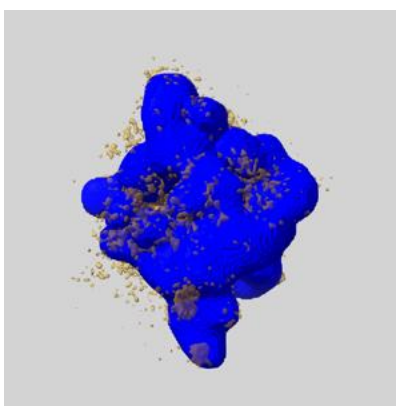
A mask typically either:

- Encompasses the whole structure
- Separates out a domain, a functional unit, a monomer or an area of interest from a larger structure

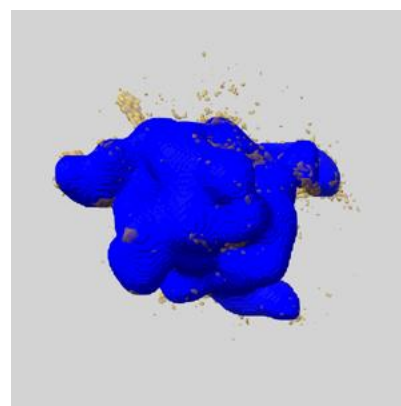
6.6.1 emd_14197_msk_1.map [i](#)



X



Y

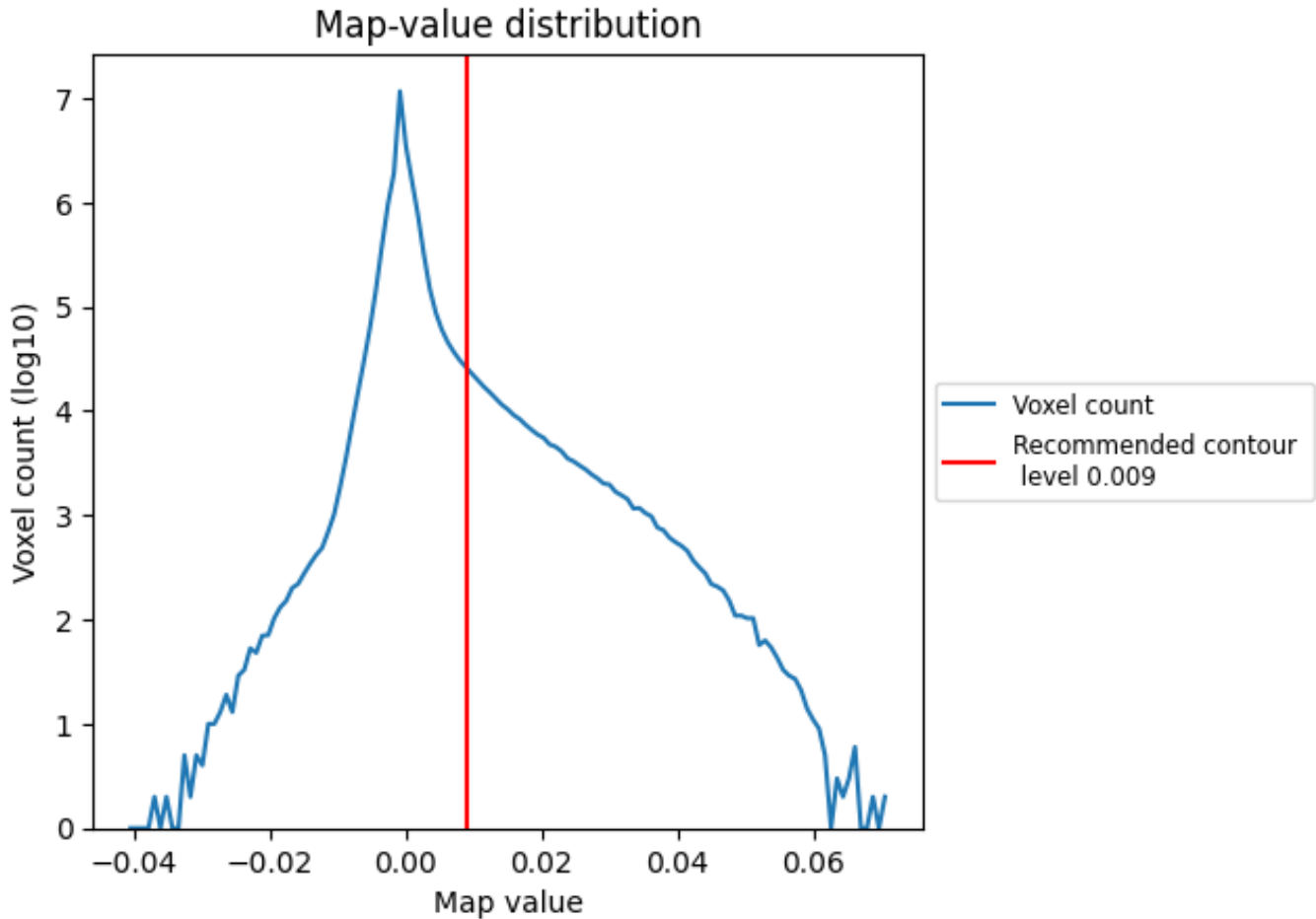


Z

7 Map analysis [i](#)

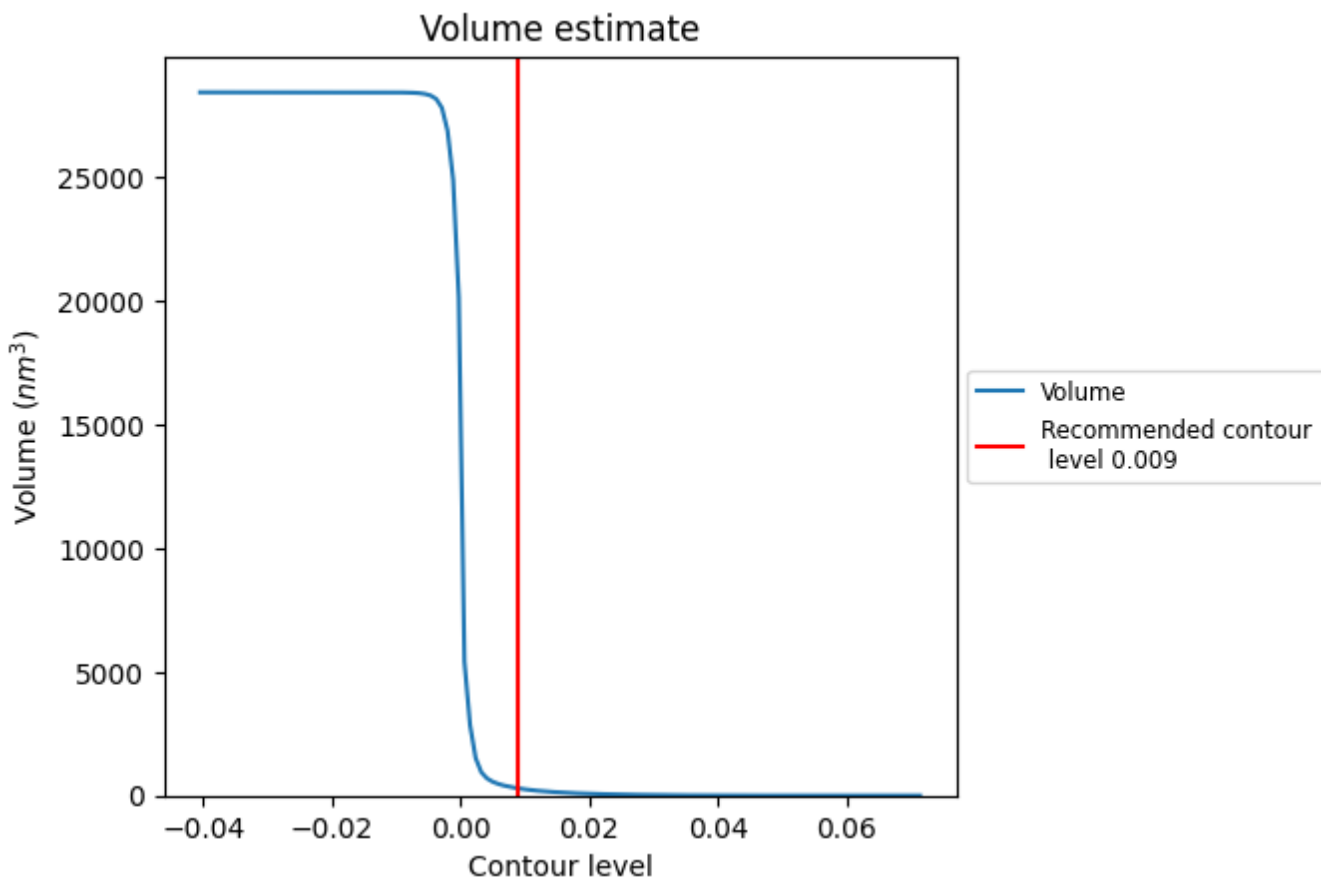
This section contains the results of statistical analysis of the map.

7.1 Map-value distribution [i](#)



The map-value distribution is plotted in 128 intervals along the x-axis. The y-axis is logarithmic. A spike in this graph at zero usually indicates that the volume has been masked.

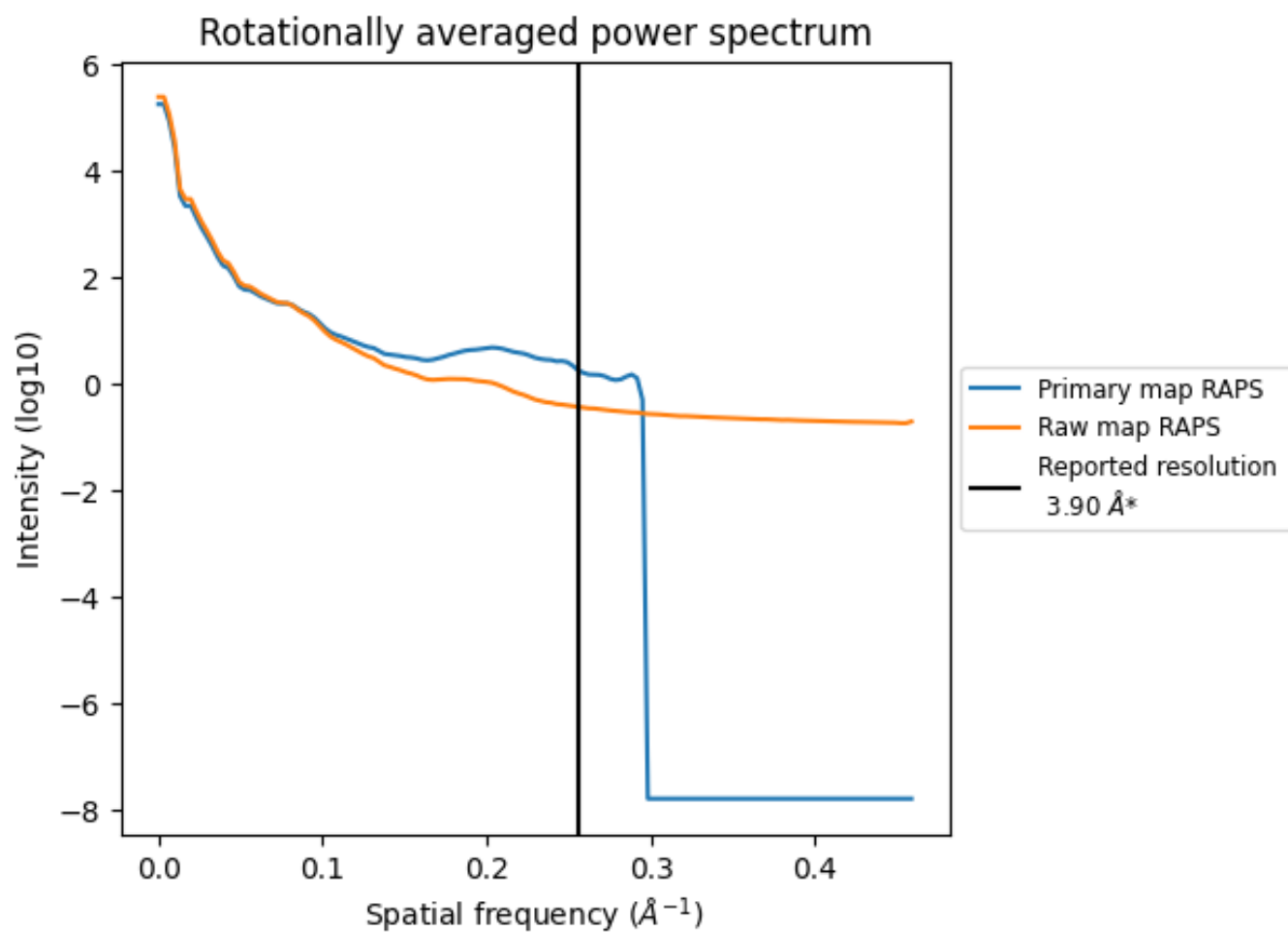
7.2 Volume estimate [i](#)



The volume at the recommended contour level is 291 nm^3 ; this corresponds to an approximate mass of 263 kDa.

The volume estimate graph shows how the enclosed volume varies with the contour level. The recommended contour level is shown as a vertical line and the intersection between the line and the curve gives the volume of the enclosed surface at the given level.

7.3 Rotationally averaged power spectrum i

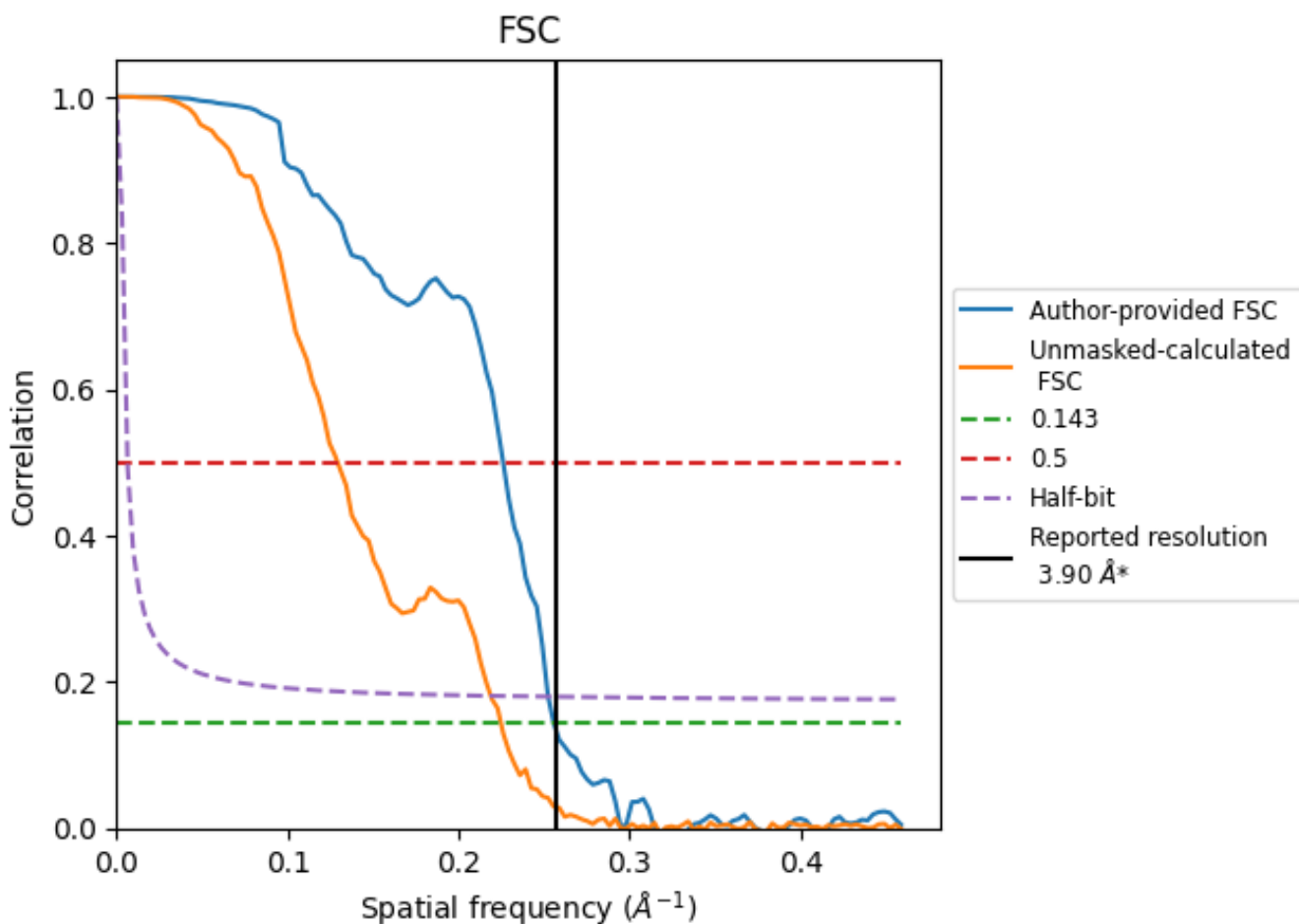


*Reported resolution corresponds to spatial frequency of 0.256 Å⁻¹

8 Fourier-Shell correlation [i](#)

Fourier-Shell Correlation (FSC) is the most commonly used method to estimate the resolution of single-particle and subtomogram-averaged maps. The shape of the curve depends on the imposed symmetry, mask and whether or not the two 3D reconstructions used were processed from a common reference. The reported resolution is shown as a black line. A curve is displayed for the half-bit criterion in addition to lines showing the 0.143 gold standard cut-off and 0.5 cut-off.

8.1 FSC [i](#)



*Reported resolution corresponds to spatial frequency of 0.256 \AA^{-1}

8.2 Resolution estimates [i](#)

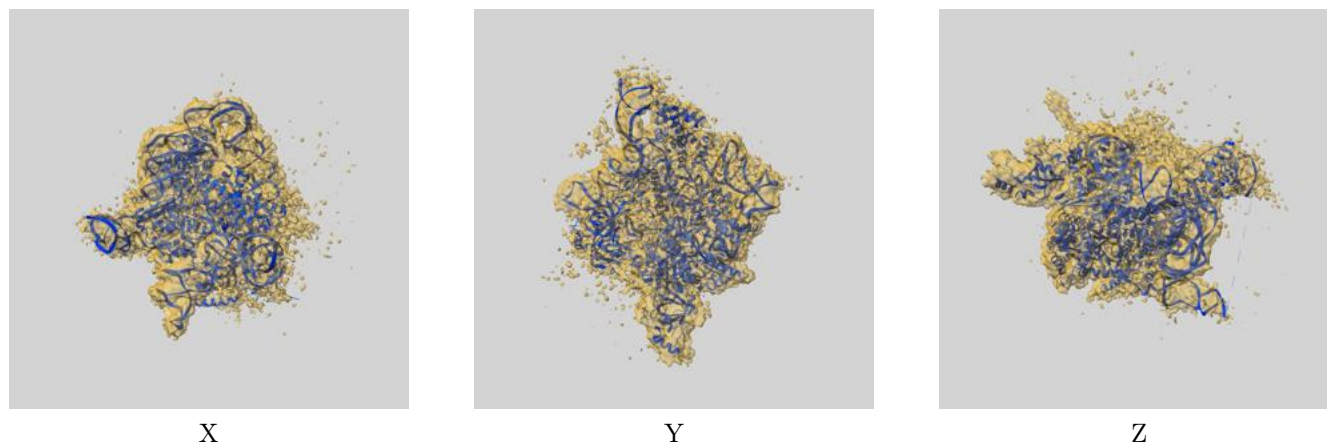
Resolution estimate (Å)	Estimation criterion (FSC cut-off)		
	0.143	0.5	Half-bit
Reported by author	3.90	-	-
Author-provided FSC curve	3.91	4.42	3.96
Unmasked-calculated*	4.45	7.74	4.57

*Resolution estimate based on FSC curve calculated by comparison of deposited half-maps. The value from deposited half-maps intersecting FSC 0.143 CUT-OFF 4.45 differs from the reported value 3.9 by more than 10 %

9 Map-model fit [i](#)

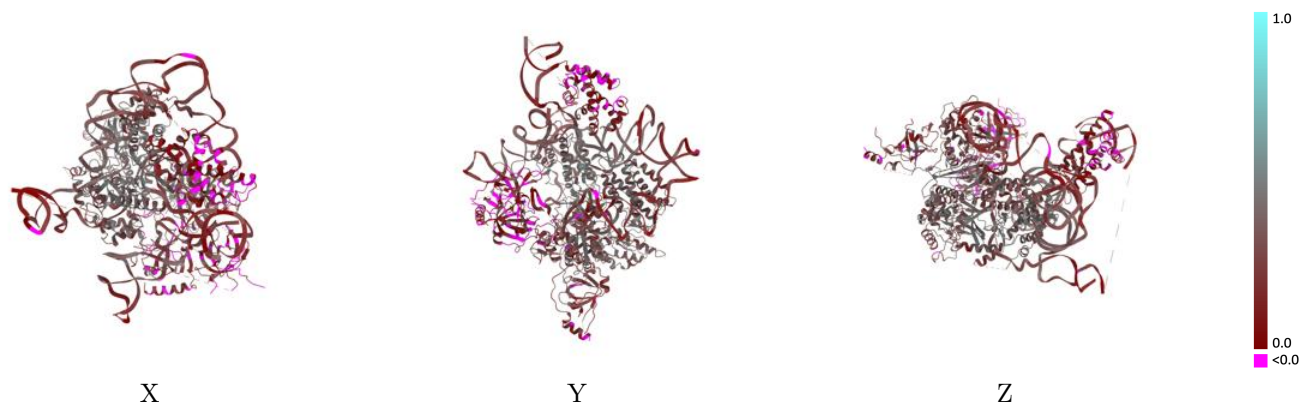
This section contains information regarding the fit between EMDB map EMD-14197 and PDB model 7QXB. Per-residue inclusion information can be found in section [3](#) on page [5](#).

9.1 Map-model overlay [i](#)



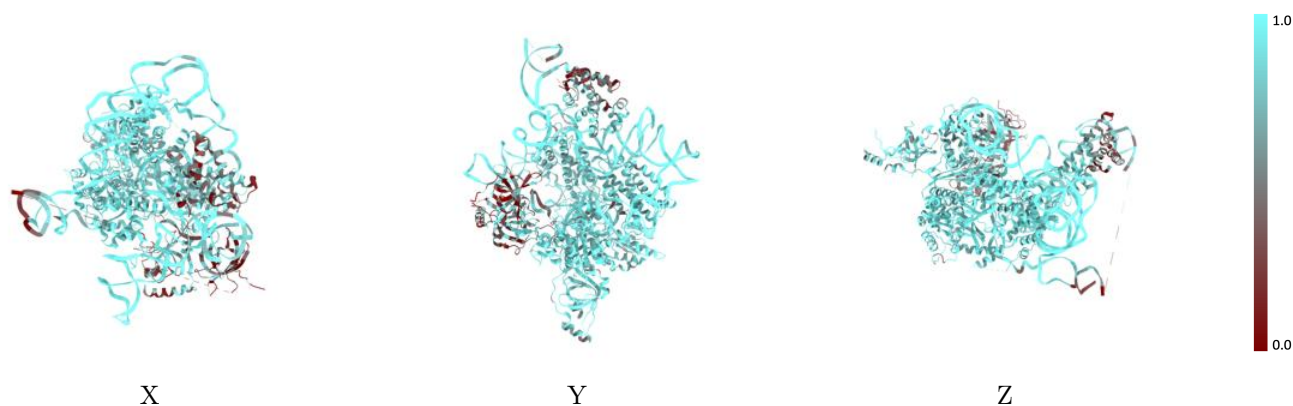
The images above show the 3D surface view of the map at the recommended contour level 0.009 at 50% transparency in yellow overlaid with a ribbon representation of the model coloured in blue. These images allow for the visual assessment of the quality of fit between the atomic model and the map.

9.2 Q-score mapped to coordinate model [i](#)



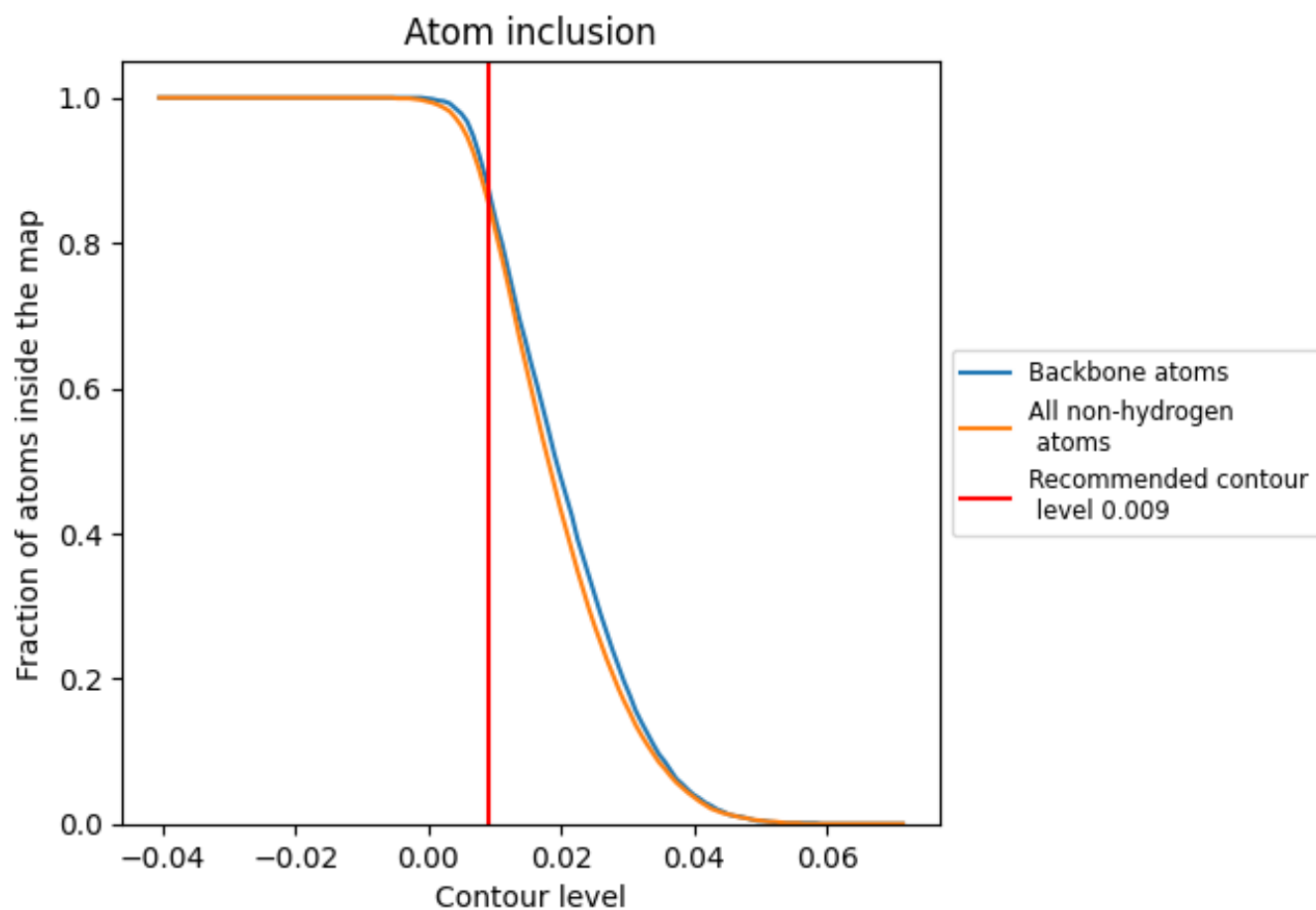
The images above show the model with each residue coloured according to its Q-score. This shows their resolvability in the map with higher Q-score values reflecting better resolvability. Please note: Q-score is calculating the resolvability of atoms, and thus high values are only expected at resolutions at which atoms can be resolved. Low Q-score values may therefore be expected for many entries.

9.3 Atom inclusion mapped to coordinate model [i](#)



The images above show the model with each residue coloured according to its atom inclusion. This shows to what extent they are inside the map at the recommended contour level (0.009).

















9.4 Atom inclusion [i](#)



At the recommended contour level, 88% of all backbone atoms, 86% of all non-hydrogen atoms, are inside the map.

9.5 Map-model fit summary

The table lists the average atom inclusion at the recommended contour level (0.009) and Q-score for the entire model and for each chain.

Chain	Atom inclusion	Q-score
All	 0.8570	 0.2780
A	 0.9180	 0.3570
B	 0.9250	 0.2570
L	 0.6250	 0.1000
M	 0.6050	 0.1160
N	 0.7610	 0.2490
O	 0.8570	 0.2440
P	 0.4790	 0.0990

