



Full wwPDB X-ray Structure Validation Report ⓘ

Jan 9, 2023 – 12:19 pm GMT

PDB ID : 7QNS
Title : Peptide VYEKKP in complex with human cathepsin V C25S mutant
Authors : Loboda, J.; Sosnowski, P.; Tusar, L.; Vidmar, R.; Vizovisek, M.; Horvat, J.;
Kosec, G.; Impens, F.; Demol, H.; Turk, B.; Gevaert, K.; Turk, D.
Deposited on : 2021-12-22
Resolution : 1.40 Å(reported)

This is a Full wwPDB X-ray Structure Validation Report for a publicly released PDB entry.

We welcome your comments at validation@mail.wwpdb.org

A user guide is available at

<https://www.wwpdb.org/validation/2017/XrayValidationReportHelp>

with specific help available everywhere you see the ⓘ symbol.

The types of validation reports are described at

<http://www.wwpdb.org/validation/2017/FAQs#types>.

The following versions of software and data (see [references ⓘ](#)) were used in the production of this report:

MolProbity : 4.02b-467
Mogul : 1.8.4, CSD as541be (2020)
Xtrriage (Phenix) : 1.13
EDS : 2.31.3
Percentile statistics : 20191225.v01 (using entries in the PDB archive December 25th 2019)
Refmac : 5.8.0158
CCP4 : 7.0.044 (Gargrove)
Ideal geometry (proteins) : Engh & Huber (2001)
Ideal geometry (DNA, RNA) : Parkinson et al. (1996)
Validation Pipeline (wwPDB-VP) : 2.31.3

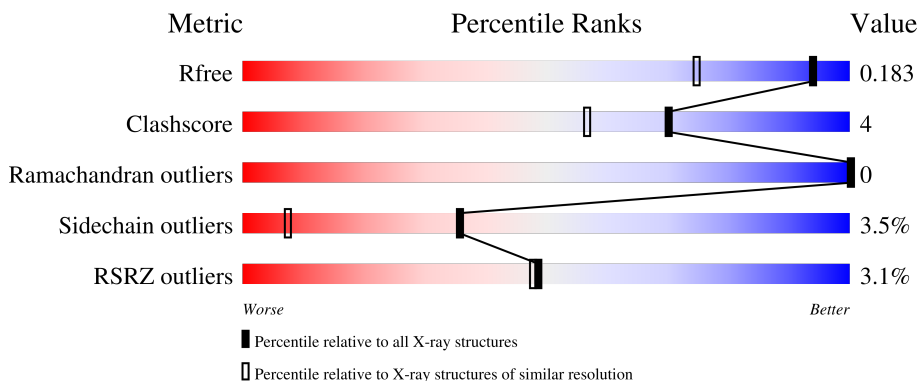
1 Overall quality at a glance

The following experimental techniques were used to determine the structure:

X-RAY DIFFRACTION

The reported resolution of this entry is 1.40 Å.

Percentile scores (ranging between 0-100) for global validation metrics of the entry are shown in the following graphic. The table shows the number of entries on which the scores are based.



Metric	Whole archive (#Entries)	Similar resolution (#Entries, resolution range(Å))
R_{free}	130704	1714 (1.40-1.40)
Clashscore	141614	1812 (1.40-1.40)
Ramachandran outliers	138981	1763 (1.40-1.40)
Sidechain outliers	138945	1762 (1.40-1.40)
RSRZ outliers	127900	1674 (1.40-1.40)

The table below summarises the geometric issues observed across the polymeric chains and their fit to the electron density. The red, orange, yellow and green segments of the lower bar indicate the fraction of residues that contain outliers for ≥ 3 , 2, 1 and 0 types of geometric quality criteria respectively. A grey segment represents the fraction of residues that are not modelled. The numeric value for each fraction is indicated below the corresponding segment, with a dot representing fractions $\leq 5\%$. The upper red bar (where present) indicates the fraction of residues that have poor fit to the electron density. The numeric value is given above the bar.

Mol	Chain	Length	Quality of chain
1	AA	222	 91% 8%
1	BA	222	 3% 93% 6%
2	PA	6	 50% 33% 17% 50%
2	PB	6	 17% 33% 17% 50%
2	PC	6	 33% 67% 33%

The following table lists non-polymeric compounds, carbohydrate monomers and non-standard residues in protein, DNA, RNA chains that are outliers for geometric or electron-density-fit criteria:

Mol	Type	Chain	Res	Chirality	Geometry	Clashes	Electron density
4	GOL	AA	302	-	-	-	X
6	MPD	AA	304	-	-	X	-

2 Entry composition [i](#)

There are 7 unique types of molecules in this entry. The entry contains 8095 atoms, of which 4108 are hydrogens and 0 are deuteriums.

In the tables below, the ZeroOcc column contains the number of atoms modelled with zero occupancy, the AltConf column contains the number of residues with at least one atom in alternate conformation and the Trace column contains the number of residues modelled with at most 2 atoms.

- Molecule 1 is a protein called Cathepsin L2.

Mol	Chain	Residues	Atoms					ZeroOcc	AltConf	Trace	
			Total	C	H	N	O				S
1	AA	222	3407	1092	1671	300	334	10	1671	5	0
1	BA	221	3373	1084	1650	295	334	10	1650	4	0

There are 6 discrepancies between the modelled and reference sequences:

Chain	Residue	Modelled	Actual	Comment	Reference
AA	26	SER	CYS	engineered mutation	UNP O60911
AA	109	GLN	ASN	engineered mutation	UNP O60911
AA	180	GLN	ASN	engineered mutation	UNP O60911
BA	247	SER	CYS	engineered mutation	UNP O60911
BA	330	GLN	ASN	engineered mutation	UNP O60911
BA	401	GLN	ASN	engineered mutation	UNP O60911

- Molecule 2 is a protein called VAL-TYR-GLU-LYS-LYS-PRO.

Mol	Chain	Residues	Atoms					ZeroOcc	AltConf	Trace
			Total	C	H	N	O			
2	PC	6	111	36	57	8	10	57	0	0
2	PB	3	52	19	24	3	6	24	0	0
2	PA	3	52	19	24	3	6	24	0	0

- Molecule 3 is CHLORIDE ION (three-letter code: CL) (formula: Cl).

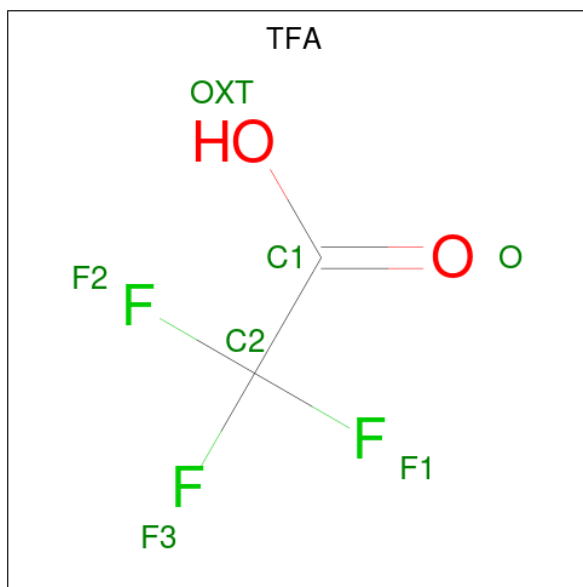
Mol	Chain	Residues	Atoms	ZeroOcc	AltConf
3	AA	2	Total Cl 2 2	0	0
3	BA	1	Total Cl 1 1	0	0

- Molecule 4 is GLYCEROL (three-letter code: GOL) (formula: $C_3H_8O_3$).



Mol	Chain	Residues	Atoms			ZeroOcc	AltConf
4	AA	1	Total	C	O	0	0
			6	3	3		
4	BA	1	Total	C	O	0	0
			6	3	3		

- Molecule 5 is trifluoroacetic acid (three-letter code: TFA) (formula: $C_2HF_3O_2$).



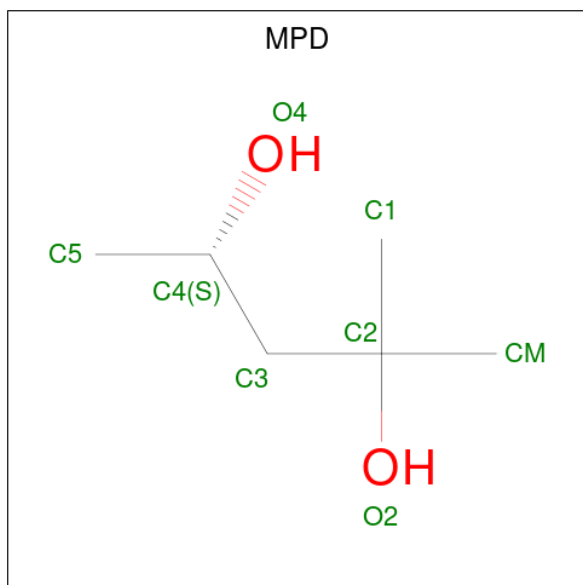
Mol	Chain	Residues	Atoms				ZeroOcc	AltConf
5	AA	1	Total	C	F	O	0	0
			7	2	3	2		

Continued on next page...

Continued from previous page...

Mol	Chain	Residues	Atoms			ZeroOcc	AltConf	
5	AA	1	Total	C	F	O	0	0
			7	2	3	2		

- Molecule 6 is (4S)-2-METHYL-2,4-PENTANEDIOL (three-letter code: MPD) (formula: $C_6H_{14}O_2$).



Mol	Chain	Residues	Atoms			ZeroOcc	AltConf
6	AA	1	Total	C	O	0	0
			8	6	2		
6	BA	1	Total	C	O	0	0
			8	6	2		
6	BA	1	Total	C	O	0	0
			8	6	2		
6	BA	1	Total	C	O	0	0
			8	6	2		
6	BA	1	Total	C	O	0	0
			8	6	2		

- Molecule 7 is water.

Mol	Chain	Residues	Atoms			ZeroOcc	AltConf
7	AA	166	Total	H	O	332	0
			498	332	166		
7	BA	171	Total	H	O	342	0
			513	342	171		

Continued on next page...

Continued from previous page...

Mol	Chain	Residues	Atoms			ZeroOcc	AltConf
7	PC	4	Total	H	O	8	0
			12	8	4		

3 Residue-property plots [i](#)

These plots are drawn for all protein, RNA, DNA and oligosaccharide chains in the entry. The first graphic for a chain summarises the proportions of the various outlier classes displayed in the second graphic. The second graphic shows the sequence view annotated by issues in geometry and electron density. Residues are color-coded according to the number of geometric quality criteria for which they contain at least one outlier: green = 0, yellow = 1, orange = 2 and red = 3 or more. A red dot above a residue indicates a poor fit to the electron density ($RSRZ > 2$). Stretches of 2 or more consecutive residues without any outlier are shown as a green connector. Residues present in the sample, but not in the model, are shown in grey.

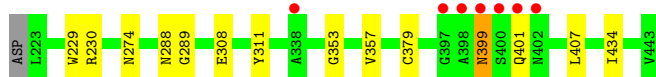
- Molecule 1: Cathepsin L2

Chain AA: 



- Molecule 1: Cathepsin L2

Chain BA: 




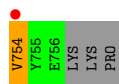
- Molecule 2: VAL-TYR-GLU-LYS-LYS-PRO

Chain PC: 




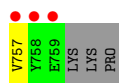
- Molecule 2: VAL-TYR-GLU-LYS-LYS-PRO

Chain PB: 



- Molecule 2: VAL-TYR-GLU-LYS-LYS-PRO

Chain PA: 



4 Data and refinement statistics

Property	Value	Source
Space group	P 43 21 2	Depositor
Cell constants a, b, c, α , β , γ	93.97Å 93.97Å 124.06Å 90.00° 90.00° 90.00°	Depositor
Resolution (Å)	43.94 – 1.40 45.34 – 1.40	Depositor EDS
% Data completeness (in resolution range)	100.0 (43.94-1.40) 99.6 (45.34-1.40)	Depositor EDS
R_{merge}	(Not available)	Depositor
R_{sym}	(Not available)	Depositor
$\langle I/\sigma(I) \rangle$ ¹	1.51 (at 1.40Å)	Xtrriage
Refinement program	MAIN	Depositor
R, R_{free}	0.177 , 0.201 0.178 , 0.183	Depositor DCC
R_{free} test set	2101 reflections (1.92%)	wwPDB-VP
Wilson B-factor (Å ²)	15.9	Xtrriage
Anisotropy	0.033	Xtrriage
Bulk solvent k_{sol} (e/Å ³), B_{sol} (Å ²)	0.38 , 74.8	EDS
L-test for twinning ²	$\langle L \rangle = 0.49$, $\langle L^2 \rangle = 0.32$	Xtrriage
Estimated twinning fraction	No twinning to report.	Xtrriage
F_o, F_c correlation	0.97	EDS
Total number of atoms	8095	wwPDB-VP
Average B, all atoms (Å ²)	12.0	wwPDB-VP

Xtrriage's analysis on translational NCS is as follows: *The largest off-origin peak in the Patterson function is 4.18% of the height of the origin peak. No significant pseudotranslation is detected.*

¹Intensities estimated from amplitudes.

²Theoretical values of $\langle |L| \rangle$, $\langle L^2 \rangle$ for acentric reflections are 0.5, 0.333 respectively for untwinned datasets, and 0.375, 0.2 for perfectly twinned datasets.

5 Model quality [i](#)

5.1 Standard geometry [i](#)

Bond lengths and bond angles in the following residue types are not validated in this section: TFA, GOL, CL, MPD

The Z score for a bond length (or angle) is the number of standard deviations the observed value is removed from the expected value. A bond length (or angle) with $|Z| > 5$ is considered an outlier worth inspection. RMSZ is the root-mean-square of all Z scores of the bond lengths (or angles).

Mol	Chain	Bond lengths		Bond angles	
		RMSZ	# Z >5	RMSZ	# Z >5
1	AA	0.55	0/1786	0.73	0/2412
1	BA	0.51	0/1765	0.72	0/2385
2	PA	0.50	0/28	0.82	0/37
2	PB	0.56	0/28	0.50	0/37
2	PC	0.45	0/55	0.72	0/71
All	All	0.53	0/3662	0.72	0/4942

There are no bond length outliers.

There are no bond angle outliers.

There are no chirality outliers.

There are no planarity outliers.

5.2 Too-close contacts [i](#)

In the following table, the Non-H and H(model) columns list the number of non-hydrogen atoms and hydrogen atoms in the chain respectively. The H(added) column lists the number of hydrogen atoms added and optimized by MolProbity. The Clashes column lists the number of clashes within the asymmetric unit, whereas Symm-Clashes lists symmetry-related clashes.

Mol	Chain	Non-H	H(model)	H(added)	Clashes	Symm-Clashes
1	AA	1736	1671	1663	12	0
1	BA	1723	1650	1642	9	0
2	PA	28	24	23	1	0
2	PB	28	24	23	1	0
2	PC	54	57	56	1	0
3	AA	2	0	0	0	0
3	BA	1	0	0	0	0
4	AA	6	0	8	0	0

Continued on next page...

Continued from previous page...

Mol	Chain	Non-H	H(model)	H(added)	Clashes	Symm-Clashes
4	BA	6	0	8	0	0
5	AA	14	0	0	0	0
6	AA	8	0	14	7	0
6	BA	40	0	70	1	0
7	AA	166	332	0	3	1
7	BA	171	342	0	1	1
7	PC	4	8	0	0	0
All	All	3987	4108	3507	26	1

The all-atom clashscore is defined as the number of clashes found per 1000 atoms (including hydrogen atoms). The all-atom clashscore for this structure is 4.

All (26) close contacts within the same asymmetric unit are listed below, sorted by their clash magnitude.

Atom-1	Atom-2	Interatomic distance (Å)	Clash overlap (Å)
6:AA:304:MPD:O4	6:AA:304:MPD:HM1	1.78	0.83
1:AA:116:VAL:HG22	6:AA:304:MPD:H52	1.76	0.68
1:BA:399:ASN:ND2	1:BA:401:GLN:H	1.94	0.65
1:BA:289:GLY:HA3	2:PB:754:VAL:HG13	1.80	0.63
1:AA:63:ASN:ND2	1:AA:70:PHE:H	1.98	0.61
6:AA:304:MPD:H4	7:AA:450:HOH:O	2.02	0.57
1:AA:116:VAL:HA	6:AA:304:MPD:H51	1.89	0.54
1:AA:181:ASN:ND2	7:AA:401:HOH:O	2.40	0.53
1:BA:399:ASN:HD21	1:BA:401:GLN:HB2	1.72	0.53
1:BA:229:TRP:CE2	1:BA:353:GLY:HA2	2.44	0.53
1:BA:357:VAL:HG21	1:BA:434[B]:ILE:CD1	2.40	0.51
1:BA:357:VAL:HG21	1:BA:434[B]:ILE:HD12	1.93	0.50
1:AA:63:ASN:HD21	1:AA:70:PHE:H	1.61	0.49
6:AA:304:MPD:C4	7:AA:450:HOH:O	2.61	0.47
2:PC:444:VAL:HG22	2:PC:445:TYR:H	1.80	0.47
1:AA:70:PHE:CZ	2:PA:757:VAL:N	2.82	0.47
1:AA:8:TRP:CE2	1:AA:132:GLY:HA2	2.49	0.47
1:AA:116:VAL:HG22	6:AA:304:MPD:C5	2.44	0.47
1:BA:230:ARG:NH1	1:BA:407:LEU:HD21	2.30	0.46
1:AA:127:ALA:HB2	6:AA:304:MPD:H53	1.99	0.45
1:AA:174:PHE:CG	1:AA:179:SER:HA	2.53	0.44
6:BA:502:MPD:HM1	6:BA:502:MPD:O4	2.18	0.43
1:AA:76:GLN:O	1:AA:80:GLU:HG3	2.18	0.43
1:BA:230:ARG:CZ	1:BA:407:LEU:HD21	2.51	0.41
1:BA:308[B]:GLU:HG3	7:BA:607:HOH:O	2.21	0.41
1:AA:2:LEU:HA	1:AA:3:PRO:HD3	1.89	0.40

All (1) symmetry-related close contacts are listed below. The label for Atom-2 includes the symmetry operator and encoded unit-cell translations to be applied.

Atom-1	Atom-2	Interatomic distance (Å)	Clash overlap (Å)
7:AA:529:HOH:O	7:BA:670:HOH:O[4_555]	1.89	0.31

5.3 Torsion angles [\(i\)](#)

5.3.1 Protein backbone [\(i\)](#)

In the following table, the Percentiles column shows the percent Ramachandran outliers of the chain as a percentile score with respect to all X-ray entries followed by that with respect to entries of similar resolution.

The Analysed column shows the number of residues for which the backbone conformation was analysed, and the total number of residues.

Mol	Chain	Analysed	Favoured	Allowed	Outliers	Percentiles	
1	AA	225/222 (101%)	218 (97%)	7 (3%)	0	100	100
1	BA	223/222 (100%)	217 (97%)	6 (3%)	0	100	100
2	PA	1/6 (17%)	1 (100%)	0	0	100	100
2	PB	1/6 (17%)	1 (100%)	0	0	100	100
2	PC	4/6 (67%)	4 (100%)	0	0	100	100
All	All	454/462 (98%)	441 (97%)	13 (3%)	0	100	100

There are no Ramachandran outliers to report.

5.3.2 Protein sidechains [\(i\)](#)

In the following table, the Percentiles column shows the percent sidechain outliers of the chain as a percentile score with respect to all X-ray entries followed by that with respect to entries of similar resolution.

The Analysed column shows the number of residues for which the sidechain conformation was analysed, and the total number of residues.

Mol	Chain	Analysed	Rotameric	Outliers	Percentiles	
1	AA	185/180 (103%)	178 (96%)	7 (4%)	33	6
1	BA	183/180 (102%)	177 (97%)	6 (3%)	38	9
2	PA	3/6 (50%)	3 (100%)	0	100	100

Continued on next page...

Continued from previous page...

Mol	Chain	Analysed	Rotameric	Outliers	Percentiles	
2	PB	3/6 (50%)	2 (67%)	1 (33%)	0	0
2	PC	6/6 (100%)	6 (100%)	0	100	100
All	All	380/378 (100%)	366 (96%)	14 (4%)	36	7

All (14) residues with a non-rotameric sidechain are listed below:

Mol	Chain	Res	Type
1	AA	1	ASP
1	AA	53	ASN
1	AA	90	TYR
1	AA	158	CYS
1	AA	181	ASN
1	AA	182	SER
1	AA	213	ILE
1	BA	274	ASN
1	BA	288[A]	ASN
1	BA	288[B]	ASN
1	BA	311	TYR
1	BA	379	CYS
1	BA	399	ASN
2	PB	754	VAL

Sometimes sidechains can be flipped to improve hydrogen bonding and reduce clashes. All (6) such sidechains are listed below:

Mol	Chain	Res	Type
1	AA	63	ASN
1	AA	181	ASN
1	AA	208	ASN
1	BA	243	GLN
1	BA	399	ASN
1	BA	401	GLN

5.3.3 RNA [i](#)

There are no RNA molecules in this entry.

5.4 Non-standard residues in protein, DNA, RNA chains [i](#)

There are no non-standard protein/DNA/RNA residues in this entry.

5.5 Carbohydrates [i](#)

There are no monosaccharides in this entry.

5.6 Ligand geometry [i](#)

Of 13 ligands modelled in this entry, 3 are monoatomic - leaving 10 for Mogul analysis.

In the following table, the Counts columns list the number of bonds (or angles) for which Mogul statistics could be retrieved, the number of bonds (or angles) that are observed in the model and the number of bonds (or angles) that are defined in the Chemical Component Dictionary. The Link column lists molecule types, if any, to which the group is linked. The Z score for a bond length (or angle) is the number of standard deviations the observed value is removed from the expected value. A bond length (or angle) with $|Z| > 2$ is considered an outlier worth inspection. RMSZ is the root-mean-square of all Z scores of the bond lengths (or angles).

Mol	Type	Chain	Res	Link	Bond lengths			Bond angles		
					Counts	RMSZ	# Z > 2	Counts	RMSZ	# Z > 2
5	TFA	AA	303	-	6,6,6	0.99	1 (16%)	9,9,9	0.75	0
6	MPD	BA	502	-	7,7,7	0.36	0	9,10,10	0.44	0
6	MPD	BA	503	-	7,7,7	0.20	0	9,10,10	0.57	0
4	GOL	AA	302	-	5,5,5	0.18	0	5,5,5	0.24	0
4	GOL	BA	504	-	5,5,5	0.14	0	5,5,5	0.61	0
5	TFA	AA	305	-	6,6,6	1.08	1 (16%)	9,9,9	1.06	1 (11%)
6	MPD	AA	304	-	7,7,7	0.56	0	9,10,10	0.47	0
6	MPD	BA	505	-	7,7,7	0.33	0	9,10,10	0.31	0
6	MPD	BA	507	-	7,7,7	0.23	0	9,10,10	0.30	0
6	MPD	BA	506	-	7,7,7	0.29	0	9,10,10	0.39	0

In the following table, the Chirals column lists the number of chiral outliers, the number of chiral centers analysed, the number of these observed in the model and the number defined in the Chemical Component Dictionary. Similar counts are reported in the Torsion and Rings columns. '-' means no outliers of that kind were identified.

Mol	Type	Chain	Res	Link	Chirals	Torsions	Rings
5	TFA	AA	303	-	-	0/6/6/6	-
6	MPD	BA	502	-	-	0/5/5/5	-
6	MPD	BA	503	-	-	1/5/5/5	-
4	GOL	AA	302	-	-	0/4/4/4	-
4	GOL	BA	504	-	-	0/4/4/4	-
5	TFA	AA	305	-	-	0/6/6/6	-
6	MPD	AA	304	-	-	2/5/5/5	-
6	MPD	BA	505	-	-	3/5/5/5	-
6	MPD	BA	507	-	-	1/5/5/5	-

Continued on next page...

Continued from previous page...

Mol	Type	Chain	Res	Link	Chirals	Torsions	Rings
6	MPD	BA	506	-	-	2/5/5/5	-

All (2) bond length outliers are listed below:

Mol	Chain	Res	Type	Atoms	Z	Observed(Å)	Ideal(Å)
5	AA	305	TFA	OXT-C1	-2.62	1.20	1.30
5	AA	303	TFA	OXT-C1	-2.34	1.21	1.30

All (1) bond angle outliers are listed below:

Mol	Chain	Res	Type	Atoms	Z	Observed(°)	Ideal(°)
5	AA	305	TFA	OXT-C1-C2	2.35	122.25	112.78

There are no chirality outliers.

All (9) torsion outliers are listed below:

Mol	Chain	Res	Type	Atoms
6	BA	505	MPD	O2-C2-C3-C4
6	BA	503	MPD	O2-C2-C3-C4
6	BA	505	MPD	C1-C2-C3-C4
6	BA	505	MPD	CM-C2-C3-C4
6	BA	506	MPD	O2-C2-C3-C4
6	AA	304	MPD	C2-C3-C4-C5
6	AA	304	MPD	C2-C3-C4-O4
6	BA	506	MPD	C2-C3-C4-O4
6	BA	507	MPD	C2-C3-C4-O4

There are no ring outliers.

2 monomers are involved in 8 short contacts:

Mol	Chain	Res	Type	Clashes	Symm-Clashes
6	BA	502	MPD	1	0
6	AA	304	MPD	7	0

5.7 Other polymers [i](#)

There are no such residues in this entry.

5.8 Polymer linkage issues

There are no chain breaks in this entry.

6 Fit of model and data [i](#)

6.1 Protein, DNA and RNA chains [i](#)

In the following table, the column labelled ‘#RSRZ> 2’ contains the number (and percentage) of RSRZ outliers, followed by percent RSRZ outliers for the chain as percentile scores relative to all X-ray entries and entries of similar resolution. The OWAB column contains the minimum, median, 95th percentile and maximum values of the occupancy-weighted average B-factor per residue. The column labelled ‘Q< 0.9’ lists the number of (and percentage) of residues with an average occupancy less than 0.9.

Mol	Chain	Analysed	<RSRZ>	#RSRZ>2	OWAB(Å ²)	Q<0.9
1	AA	222/222 (100%)	-0.24	1 (0%) 91 89	10, 15, 35, 56	0
1	BA	221/222 (99%)	-0.08	7 (3%) 47 46	11, 19, 43, 97	0
2	PA	3/6 (50%)	3.71	3 (100%) 0 0	25, 25, 45, 68	0
2	PB	3/6 (50%)	1.01	1 (33%) 0 0	24, 24, 39, 43	0
2	PC	6/6 (100%)	2.14	2 (33%) 0 0	30, 45, 62, 71	0
All	All	455/462 (98%)	-0.10	14 (3%) 49 48	10, 17, 43, 97	0

All (14) RSRZ outliers are listed below:

Mol	Chain	Res	Type	RSRZ
2	PA	757	VAL	6.7
1	BA	401	GLN	5.4
1	BA	397	GLY	4.8
2	PC	449	PRO	4.2
1	BA	398	ALA	3.8
1	BA	402	ASN	3.5
2	PB	754	VAL	2.7
1	BA	400	SER	2.7
1	AA	181	ASN	2.6
1	BA	399	ASN	2.4
1	BA	338	ALA	2.3
2	PA	758	TYR	2.3
2	PC	444	VAL	2.3
2	PA	759	GLU	2.2

6.2 Non-standard residues in protein, DNA, RNA chains [i](#)

There are no non-standard protein/DNA/RNA residues in this entry.

6.3 Carbohydrates [i](#)

There are no monosaccharides in this entry.

6.4 Ligands [i](#)

In the following table, the Atoms column lists the number of modelled atoms in the group and the number defined in the chemical component dictionary. The B-factors column lists the minimum, median, 95th percentile and maximum values of B factors of atoms in the group. The column labelled 'Q< 0.9' lists the number of atoms with occupancy less than 0.9.

Mol	Type	Chain	Res	Atoms	RSCC	RSR	B-factors(Å ²)	Q<0.9
6	MPD	BA	506	8/8	0.68	0.19	47,54,75,83	0
6	MPD	AA	304	8/8	0.72	0.17	62,67,78,81	0
4	GOL	AA	302	6/6	0.74	0.88	100,114,118,121	0
6	MPD	BA	505	8/8	0.75	0.23	45,53,69,69	0
4	GOL	BA	504	6/6	0.77	0.19	66,81,85,89	0
6	MPD	BA	503	8/8	0.82	0.14	35,42,45,45	0
5	TFA	AA	305	7/7	0.83	0.17	28,36,39,39	0
6	MPD	BA	502	8/8	0.85	0.13	26,31,35,37	0
6	MPD	BA	507	8/8	0.88	0.15	49,55,67,68	0
5	TFA	AA	303	7/7	0.93	0.08	18,26,29,30	0
3	CL	AA	306	1/1	0.94	0.08	23,23,23,23	0
3	CL	AA	301	1/1	0.96	0.06	21,21,21,21	0
3	CL	BA	501	1/1	0.98	0.03	22,22,22,22	0

6.5 Other polymers [i](#)

There are no such residues in this entry.