



Full wwPDB X-ray Structure Validation Report ⓘ

Aug 10, 2021 – 11:05 am BST

PDB ID : 7O52
Title : CD22 d6-d7 in complex with Fab m971
Authors : Ereno-Orbea, J.; Sicard, T.; Julien, J.P.
Deposited on : 2021-04-07
Resolution : 2.41 Å(reported)

This is a Full wwPDB X-ray Structure Validation Report for a publicly released PDB entry.

We welcome your comments at validation@mail.wwpdb.org

A user guide is available at

<https://www.wwpdb.org/validation/2017/XrayValidationReportHelp>

with specific help available everywhere you see the ⓘ symbol.

The following versions of software and data (see [references ⓘ](#)) were used in the production of this report:

MolProbity : 4.02b-467
Mogul : 1.8.5 (274361), CSD as541be (2020)
Xtriage (Phenix) : 1.13
EDS : 2.23.1
Percentile statistics : 20191225.v01 (using entries in the PDB archive December 25th 2019)
Refmac : 5.8.0158
CCP4 : 7.0.044 (Gargrove)
Ideal geometry (proteins) : Engh & Huber (2001)
Ideal geometry (DNA, RNA) : Parkinson et al. (1996)
Validation Pipeline (wwPDB-VP) : 2.23.1

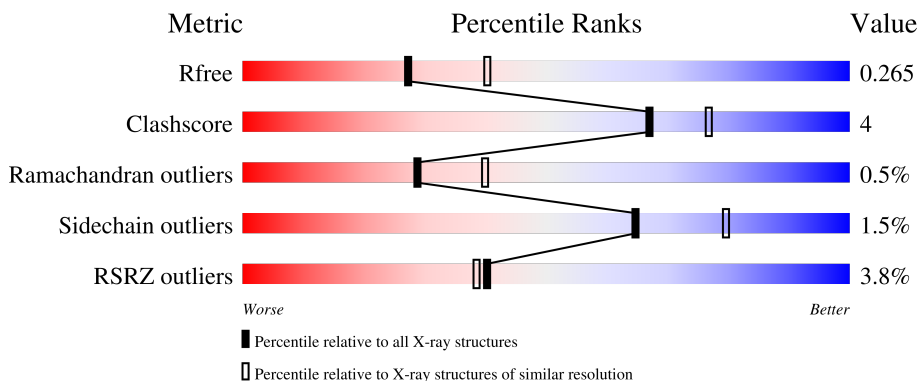
1 Overall quality at a glance

The following experimental techniques were used to determine the structure:

X-RAY DIFFRACTION

The reported resolution of this entry is 2.41 Å.

Percentile scores (ranging between 0-100) for global validation metrics of the entry are shown in the following graphic. The table shows the number of entries on which the scores are based.



Metric	Whole archive (#Entries)	Similar resolution (#Entries, resolution range(Å))
R_{free}	130704	4647 (2.44-2.40)
Clashscore	141614	5161 (2.44-2.40)
Ramachandran outliers	138981	5073 (2.44-2.40)
Sidechain outliers	138945	5074 (2.44-2.40)
RSRZ outliers	127900	4543 (2.44-2.40)

The table below summarises the geometric issues observed across the polymeric chains and their fit to the electron density. The red, orange, yellow and green segments of the lower bar indicate the fraction of residues that contain outliers for ≥ 3 , 2, 1 and 0 types of geometric quality criteria respectively. A grey segment represents the fraction of residues that are not modelled. The numeric value for each fraction is indicated below the corresponding segment, with a dot representing fractions $\leq 5\%$. The upper red bar (where present) indicates the fraction of residues that have poor fit to the electron density. The numeric value is given above the bar.

Mol	Chain	Length	Quality of chain
1	H	229	 91% 7%
2	L	216	 91% 8%
3	U	194	 11% 70% 11% 16%

2 Entry composition [i](#)

There are 7 unique types of molecules in this entry. The entry contains 4746 atoms, of which 0 are hydrogens and 0 are deuteriums.

In the tables below, the ZeroOcc column contains the number of atoms modelled with zero occupancy, the AltConf column contains the number of residues with at least one atom in alternate conformation and the Trace column contains the number of residues modelled with at most 2 atoms.

- Molecule 1 is a protein called m971 Fab Heavy chain.

Mol	Chain	Residues	Atoms					ZeroOcc	AltConf	Trace
			Total	C	N	O	S			
1	H	227	1709	1072	287	344	6	0	0	0

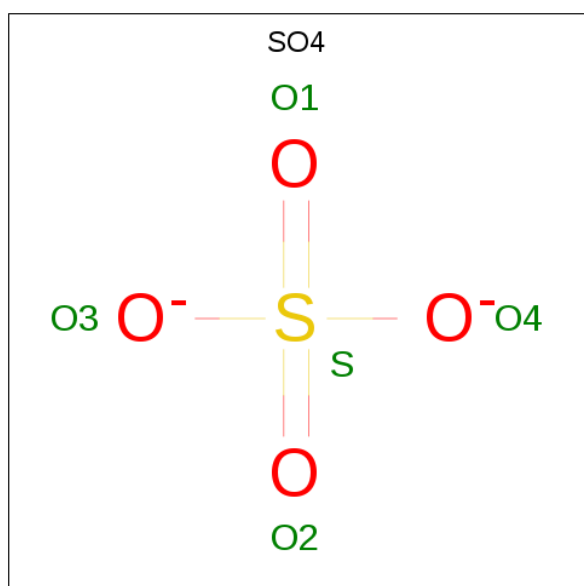
- Molecule 2 is a protein called m971 Fab Light chain.

Mol	Chain	Residues	Atoms					ZeroOcc	AltConf	Trace
			Total	C	N	O	S			
2	L	215	1657	1034	281	337	5	0	0	0

- Molecule 3 is a protein called CD22 d6-d7 Ig domains.

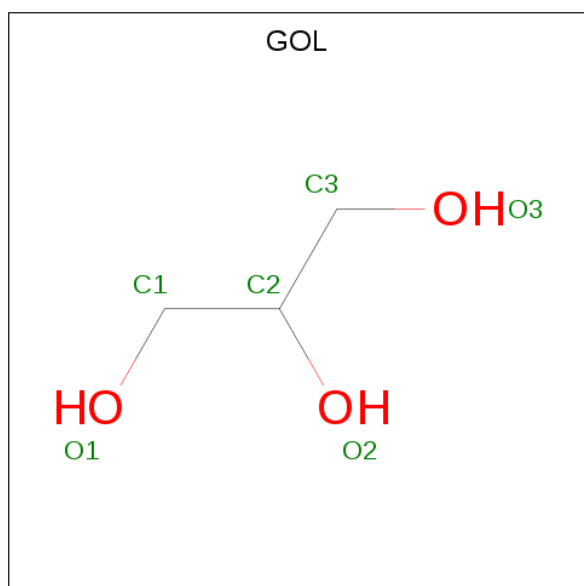
Mol	Chain	Residues	Atoms					ZeroOcc	AltConf	Trace
			Total	C	N	O	S			
3	U	162	1286	810	224	246	6	0	0	0

- Molecule 4 is SULFATE ION (three-letter code: SO4) (formula: O₄S).



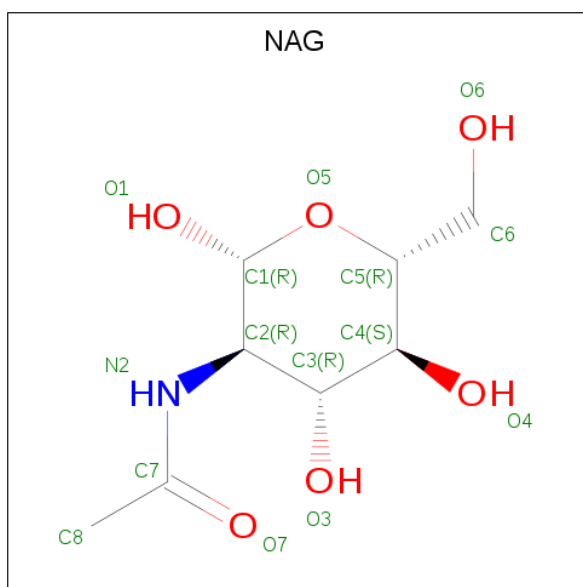
Mol	Chain	Residues	Atoms	ZeroOcc	AltConf
4	H	1	Total O S 5 4 1	0	0
4	H	1	Total O S 5 4 1	0	0
4	L	1	Total O S 5 4 1	0	0
4	U	1	Total O S 5 4 1	0	0
4	U	1	Total O S 5 4 1	0	0

- Molecule 5 is GLYCEROL (three-letter code: GOL) (formula: C₃H₈O₃).



Mol	Chain	Residues	Atoms	ZeroOcc	AltConf
5	L	1	Total C O 6 3 3	0	0
5	L	1	Total C O 6 3 3	0	0
5	U	1	Total C O 6 3 3	0	0

- Molecule 6 is 2-acetamido-2-deoxy-beta-D-glucopyranose (three-letter code: NAG) (formula: C₈H₁₅NO₆).



Mol	Chain	Residues	Atoms				ZeroOcc	AltConf
			Total	C	N	O		
6	U	1	14	8	1	5	0	0

- Molecule 7 is water.

Mol	Chain	Residues	Atoms		ZeroOcc	AltConf
7	H	19	Total	O	0	0
			19	19		
7	L	16	Total	O	0	0
			16	16		
7	U	2	Total	O	0	0
			2	2		

3 Residue-property plots [i](#)

These plots are drawn for all protein, RNA, DNA and oligosaccharide chains in the entry. The first graphic for a chain summarises the proportions of the various outlier classes displayed in the second graphic. The second graphic shows the sequence view annotated by issues in geometry and electron density. Residues are color-coded according to the number of geometric quality criteria for which they contain at least one outlier: green = 0, yellow = 1, orange = 2 and red = 3 or more. A red dot above a residue indicates a poor fit to the electron density ($RSRZ > 2$). Stretches of 2 or more consecutive residues without any outlier are shown as a green connector. Residues present in the sample, but not in the model, are shown in grey.

- Molecule 1: m971 Fab Heavy chain

Chain H:  91% 7%



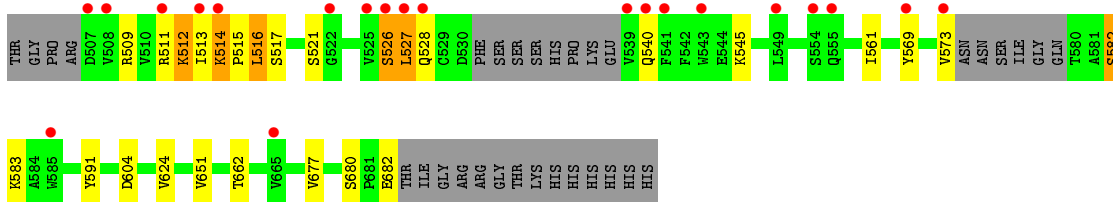
- Molecule 2: m971 Fab Light chain

Chain L:  91% 8%



- Molecule 3: CD22 d6-d7 Ig domains

Chain U:  11% 70% 11% 16%



4 Data and refinement statistics

Property	Value	Source
Space group	I 2 2 2	Depositor
Cell constants a, b, c, α , β , γ	61.48Å 119.72Å 241.67Å 90.00° 90.00° 90.00°	Depositor
Resolution (Å)	49.82 – 2.41 49.82 – 2.41	Depositor EDS
% Data completeness (in resolution range)	99.5 (49.82-2.41) 99.5 (49.82-2.41)	Depositor EDS
R_{merge}	0.10	Depositor
R_{sym}	(Not available)	Depositor
$\langle I/\sigma(I) \rangle$ ¹	0.99 (at 2.39Å)	Xtrriage
Refinement program	PHENIX v1.14	Depositor
R, R_{free}	0.226 , 0.264 0.226 , 0.265	Depositor DCC
R_{free} test set	1750 reflections (5.00%)	wwPDB-VP
Wilson B-factor (Å ²)	60.4	Xtrriage
Anisotropy	0.308	Xtrriage
Bulk solvent k_{sol} (e/Å ³), B_{sol} (Å ²)	0.33 , 43.5	EDS
L-test for twinning ²	$\langle L \rangle = 0.50$, $\langle L^2 \rangle = 0.33$	Xtrriage
Estimated twinning fraction	No twinning to report.	Xtrriage
F_o, F_c correlation	0.94	EDS
Total number of atoms	4746	wwPDB-VP
Average B, all atoms (Å ²)	69.0	wwPDB-VP

Xtrriage's analysis on translational NCS is as follows: *The largest off-origin peak in the Patterson function is 4.06% of the height of the origin peak. No significant pseudotranslation is detected.*

¹ Intensities estimated from amplitudes.

² Theoretical values of $\langle |L| \rangle$, $\langle L^2 \rangle$ for acentric reflections are 0.5, 0.333 respectively for untwinned datasets, and 0.375, 0.2 for perfectly twinned datasets.

5 Model quality [i](#)

5.1 Standard geometry [i](#)

Bond lengths and bond angles in the following residue types are not validated in this section: GOL, SO4, NAG

The Z score for a bond length (or angle) is the number of standard deviations the observed value is removed from the expected value. A bond length (or angle) with $|Z| > 5$ is considered an outlier worth inspection. RMSZ is the root-mean-square of all Z scores of the bond lengths (or angles).

Mol	Chain	Bond lengths		Bond angles	
		RMSZ	# Z >5	RMSZ	# Z >5
1	H	0.25	0/1750	0.47	0/2391
2	L	0.25	0/1692	0.45	0/2298
3	U	0.26	0/1320	0.50	0/1792
All	All	0.25	0/4762	0.47	0/6481

Chiral center outliers are detected by calculating the chiral volume of a chiral center and verifying if the center is modelled as a planar moiety or with the opposite hand. A planarity outlier is detected by checking planarity of atoms in a peptide group, atoms in a mainchain group or atoms of a sidechain that are expected to be planar.

Mol	Chain	#Chirality outliers	#Planarity outliers
3	U	0	1

There are no bond length outliers.

There are no bond angle outliers.

There are no chirality outliers.

All (1) planarity outliers are listed below:

Mol	Chain	Res	Type	Group
3	U	516	LEU	Peptide

5.2 Too-close contacts [i](#)

In the following table, the Non-H and H(model) columns list the number of non-hydrogen atoms and hydrogen atoms in the chain respectively. The H(added) column lists the number of hydrogen atoms added and optimized by MolProbity. The Clashes column lists the number of clashes within the asymmetric unit, whereas Symm-Clashes lists symmetry-related clashes.

Mol	Chain	Non-H	H(model)	H(added)	Clashes	Symm-Clashes
1	H	1709	0	1672	9	0
2	L	1657	0	1606	9	0
3	U	1286	0	1231	18	0
4	H	10	0	0	0	0
4	L	5	0	0	0	0
4	U	10	0	0	0	0
5	L	12	0	16	2	0
5	U	6	0	8	0	0
6	U	14	0	13	0	0
7	H	19	0	0	1	0
7	L	16	0	0	0	0
7	U	2	0	0	0	0
All	All	4746	0	4546	36	0

The all-atom clashscore is defined as the number of clashes found per 1000 atoms (including hydrogen atoms). The all-atom clashscore for this structure is 4.

All (36) close contacts within the same asymmetric unit are listed below, sorted by their clash magnitude.

Atom-1	Atom-2	Interatomic distance (Å)	Clash overlap (Å)
3:U:526:SER:OG	3:U:527:LEU:N	2.22	0.71
3:U:514:LYS:HB3	3:U:515:PRO:HD3	1.82	0.61
3:U:512:LYS:NZ	3:U:517:SER:HA	2.17	0.60
3:U:624:VAL:HG13	3:U:662:THR:H	1.72	0.55
3:U:512:LYS:HD3	3:U:515:PRO:HD2	1.89	0.55
2:L:59:PRO:HD3	5:L:302:GOL:H12	1.89	0.54
1:H:18:LEU:HD12	1:H:109:VAL:HG11	1.90	0.53
3:U:545:LYS:HD2	3:U:569:TYR:CZ	2.45	0.52
3:U:651:VAL:HA	3:U:677:VAL:HB	1.92	0.51
2:L:7:SER:HG	2:L:22:THR:HG1	1.59	0.51
1:H:119:PRO:HB3	1:H:145:TYR:HB3	1.92	0.50
3:U:509:ARG:HH12	3:U:511:ARG:NE	2.09	0.50
3:U:521:SER:HA	3:U:561:ILE:HG23	1.94	0.49
3:U:509:ARG:HH22	3:U:511:ARG:HE	1.60	0.49
3:U:521:SER:OG	3:U:591:TYR:HB3	2.11	0.49
2:L:40:PRO:HG2	2:L:165:GLU:HG3	1.96	0.48
1:H:191:THR:O	7:H:401:HOH:O	2.20	0.47
3:U:509:ARG:HH12	3:U:511:ARG:CD	2.28	0.47
2:L:211:ARG:HH22	5:L:303:GOL:H2	1.80	0.47
3:U:512:LYS:HZ3	3:U:517:SER:HA	1.81	0.45
2:L:33:LEU:HD22	2:L:71:PHE:CG	2.52	0.45
3:U:582:SER:OG	3:U:583:LYS:N	2.51	0.44

Continued on next page...

Continued from previous page...

Atom-1	Atom-2	Interatomic distance (Å)	Clash overlap (Å)
1:H:39:GLN:HB2	1:H:45:LEU:HD23	1.99	0.44
1:H:188:SER:HB2	1:H:192:GLN:HG2	2.00	0.43
3:U:680:SER:O	3:U:682:GLU:N	2.51	0.43
3:U:540:GLN:NE2	3:U:573:VAL:O	2.51	0.43
1:H:38:ARG:HB3	1:H:48:LEU:HD11	2.00	0.43
1:H:23:ALA:HA	1:H:77:GLN:HG2	2.00	0.42
3:U:680:SER:OG	3:U:682:GLU:OE1	2.31	0.42
1:H:43:ARG:NH2	1:H:85:GLU:HG2	2.35	0.42
3:U:513:ILE:HG12	3:U:528:GLN:HG2	2.02	0.41
2:L:61:ARG:NH1	2:L:79:GLN:OE1	2.54	0.41
1:H:55:TRP:CE3	1:H:71:PRO:HG3	2.56	0.41
2:L:35:TRP:CE2	2:L:73:LEU:HB2	2.56	0.41
2:L:113:PRO:HB3	2:L:139:PHE:HB3	2.02	0.41
2:L:37:GLN:HB2	2:L:47:LEU:HD11	2.01	0.40

There are no symmetry-related clashes.

5.3 Torsion angles [i](#)

5.3.1 Protein backbone [i](#)

In the following table, the Percentiles column shows the percent Ramachandran outliers of the chain as a percentile score with respect to all X-ray entries followed by that with respect to entries of similar resolution.

The Analysed column shows the number of residues for which the backbone conformation was analysed, and the total number of residues.

Mol	Chain	Analysed	Favoured	Allowed	Outliers	Percentiles	
1	H	225/229 (98%)	219 (97%)	6 (3%)	0	100	100
2	L	213/216 (99%)	208 (98%)	5 (2%)	0	100	100
3	U	156/194 (80%)	143 (92%)	10 (6%)	3 (2%)	8	9
All	All	594/639 (93%)	570 (96%)	21 (4%)	3 (0%)	29	40

All (3) Ramachandran outliers are listed below:

Mol	Chain	Res	Type
3	U	514	LYS
3	U	516	LEU
3	U	527	LEU

5.3.2 Protein sidechains [i](#)

In the following table, the Percentiles column shows the percent sidechain outliers of the chain as a percentile score with respect to all X-ray entries followed by that with respect to entries of similar resolution.

The Analysed column shows the number of residues for which the sidechain conformation was analysed, and the total number of residues.

Mol	Chain	Analysed	Rotameric	Outliers	Percentiles	
1	H	198/199 (100%)	196 (99%)	2 (1%)	76	87
2	L	188/189 (100%)	186 (99%)	2 (1%)	73	86
3	U	145/173 (84%)	141 (97%)	4 (3%)	43	62
All	All	531/561 (95%)	523 (98%)	8 (2%)	65	79

All (8) residues with a non-rotameric sidechain are listed below:

Mol	Chain	Res	Type
1	H	15	SER
1	H	43	ARG
2	L	12	SER
2	L	93	SER
3	U	512	LYS
3	U	526	SER
3	U	582	SER
3	U	604	ASP

Sometimes sidechains can be flipped to improve hydrogen bonding and reduce clashes. All (2) such sidechains are listed below:

Mol	Chain	Res	Type
1	H	1	GLN
2	L	199	GLN

5.3.3 RNA [i](#)

There are no RNA molecules in this entry.

5.4 Non-standard residues in protein, DNA, RNA chains [i](#)

There are no non-standard protein/DNA/RNA residues in this entry.

5.5 Carbohydrates [i](#)

There are no monosaccharides in this entry.

5.6 Ligand geometry [i](#)

9 ligands are modelled in this entry.

In the following table, the Counts columns list the number of bonds (or angles) for which Mogul statistics could be retrieved, the number of bonds (or angles) that are observed in the model and the number of bonds (or angles) that are defined in the Chemical Component Dictionary. The Link column lists molecule types, if any, to which the group is linked. The Z score for a bond length (or angle) is the number of standard deviations the observed value is removed from the expected value. A bond length (or angle) with $|Z| > 2$ is considered an outlier worth inspection. RMSZ is the root-mean-square of all Z scores of the bond lengths (or angles).

Mol	Type	Chain	Res	Link	Bond lengths			Bond angles		
					Counts	RMSZ	# Z > 2	Counts	RMSZ	# Z > 2
4	SO4	H	301	-	4,4,4	0.14	0	6,6,6	0.05	0
4	SO4	U	703	-	4,4,4	0.14	0	6,6,6	0.05	0
4	SO4	U	702	-	4,4,4	0.14	0	6,6,6	0.05	0
5	GOL	L	302	-	5,5,5	0.92	0	5,5,5	1.01	0
5	GOL	L	303	-	5,5,5	0.91	0	5,5,5	1.00	0
5	GOL	U	704	-	5,5,5	0.91	0	5,5,5	1.01	0
4	SO4	H	302	-	4,4,4	0.14	0	6,6,6	0.05	0
6	NAG	U	701	3	14,14,15	0.26	0	17,19,21	0.40	0
4	SO4	L	301	-	4,4,4	0.14	0	6,6,6	0.05	0

In the following table, the Chirals column lists the number of chiral outliers, the number of chiral centers analysed, the number of these observed in the model and the number defined in the Chemical Component Dictionary. Similar counts are reported in the Torsion and Rings columns. '-' means no outliers of that kind were identified.

Mol	Type	Chain	Res	Link	Chirals	Torsions	Rings
6	NAG	U	701	3	-	2/6/23/26	0/1/1/1
5	GOL	L	303	-	-	0/4/4/4	-
5	GOL	L	302	-	-	0/4/4/4	-
5	GOL	U	704	-	-	0/4/4/4	-

There are no bond length outliers.

There are no bond angle outliers.

There are no chirality outliers.

All (2) torsion outliers are listed below:

Mol	Chain	Res	Type	Atoms
6	U	701	NAG	O5-C5-C6-O6
6	U	701	NAG	C4-C5-C6-O6

There are no ring outliers.

2 monomers are involved in 2 short contacts:

Mol	Chain	Res	Type	Clashes	Symm-Clashes
5	L	302	GOL	1	0
5	L	303	GOL	1	0

5.7 Other polymers [i](#)

There are no such residues in this entry.

5.8 Polymer linkage issues [i](#)

There are no chain breaks in this entry.

6 Fit of model and data

6.1 Protein, DNA and RNA chains

In the following table, the column labelled ‘#RSRZ> 2’ contains the number (and percentage) of RSRZ outliers, followed by percent RSRZ outliers for the chain as percentile scores relative to all X-ray entries and entries of similar resolution. The OWAB column contains the minimum, median, 95th percentile and maximum values of the occupancy-weighted average B-factor per residue. The column labelled ‘Q< 0.9’ lists the number of (and percentage) of residues with an average occupancy less than 0.9.

Mol	Chain	Analysed	<RSRZ>	#RSRZ>2	OWAB(Å ²)	Q<0.9
1	H	227/229 (99%)	-0.07	1 (0%) 92 91	44, 60, 78, 106	0
2	L	215/216 (99%)	-0.06	1 (0%) 91 89	46, 61, 77, 103	0
3	U	162/194 (83%)	0.69	21 (12%) 3 2	57, 85, 126, 135	0
All	All	604/639 (94%)	0.14	23 (3%) 40 38	44, 64, 114, 135	0

All (23) RSRZ outliers are listed below:

Mol	Chain	Res	Type	RSRZ
3	U	522	GLY	7.1
3	U	513	ILE	6.7
3	U	526	SER	5.5
1	H	216	CYS	5.4
3	U	539	VAL	5.0
3	U	527	LEU	4.3
3	U	541	PHE	4.3
3	U	573	VAL	4.0
3	U	507	ASP	3.8
3	U	569	TYR	3.7
3	U	514	LYS	3.6
3	U	528	GLN	3.4
3	U	508	VAL	3.4
3	U	525	VAL	3.3
3	U	543	TRP	3.3
2	L	-1	THR	2.8
3	U	511	ARG	2.8
3	U	540	GLN	2.7
3	U	555	GLN	2.6
3	U	549	LEU	2.4
3	U	665	VAL	2.4
3	U	554	SER	2.2
3	U	585	TRP	2.1

6.2 Non-standard residues in protein, DNA, RNA chains [i](#)

There are no non-standard protein/DNA/RNA residues in this entry.

6.3 Carbohydrates [i](#)

There are no monosaccharides in this entry.

6.4 Ligands [i](#)

In the following table, the Atoms column lists the number of modelled atoms in the group and the number defined in the chemical component dictionary. The B-factors column lists the minimum, median, 95th percentile and maximum values of B factors of atoms in the group. The column labelled 'Q< 0.9' lists the number of atoms with occupancy less than 0.9.

Mol	Type	Chain	Res	Atoms	RSCC	RSR	B-factors(Å ²)	Q<0.9
5	GOL	L	302	6/6	0.83	0.17	65,68,74,81	0
6	NAG	U	701	14/15	0.83	0.24	74,94,102,105	0
5	GOL	U	704	6/6	0.85	0.17	82,89,89,92	0
5	GOL	L	303	6/6	0.87	0.18	79,85,88,88	0
4	SO4	U	703	5/5	0.91	0.31	113,116,128,130	0
4	SO4	H	301	5/5	0.92	0.14	83,93,97,97	0
4	SO4	U	702	5/5	0.93	0.13	87,91,101,102	0
4	SO4	L	301	5/5	0.96	0.12	75,80,100,104	0
4	SO4	H	302	5/5	0.97	0.08	89,97,115,116	0

6.5 Other polymers [i](#)

There are no such residues in this entry.