



# Full wwPDB X-ray Structure Validation Report ⓘ

Oct 12, 2021 – 05:36 pm BST

PDB ID : 7NI8  
Title : Crystal structure of the human METTL3-METTL14 complex with compound UOZ040a  
Authors : Bedi, R.K.; Huang, D.; Caffisch, A.  
Deposited on : 2021-02-11  
Resolution : 2.20 Å(reported)

This is a Full wwPDB X-ray Structure Validation Report for a publicly released PDB entry.

We welcome your comments at [validation@mail.wwpdb.org](mailto:validation@mail.wwpdb.org)

A user guide is available at

<https://www.wwpdb.org/validation/2017/XrayValidationReportHelp>

with specific help available everywhere you see the ⓘ symbol.

---

The following versions of software and data (see [references ⓘ](#)) were used in the production of this report:

MolProbity : 4.02b-467  
Mogul : 1.8.5 (274361), CSD as541be (2020)  
Xtriage (Phenix) : 1.13  
EDS : 2.23.2  
buster-report : 1.1.7 (2018)  
Percentile statistics : 20191225.v01 (using entries in the PDB archive December 25th 2019)  
Refmac : 5.8.0267  
CCP4 : 7.1.010 (Gargrove)  
Ideal geometry (proteins) : Engh & Huber (2001)  
Ideal geometry (DNA, RNA) : Parkinson et al. (1996)  
Validation Pipeline (wwPDB-VP) : 2.23.2

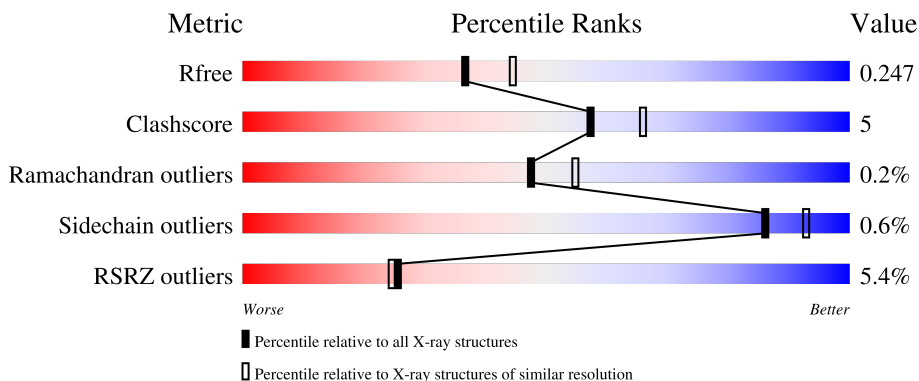
# 1 Overall quality at a glance

The following experimental techniques were used to determine the structure:

*X-RAY DIFFRACTION*

The reported resolution of this entry is 2.20 Å.

Percentile scores (ranging between 0-100) for global validation metrics of the entry are shown in the following graphic. The table shows the number of entries on which the scores are based.



Metric	Whole archive (#Entries)	Similar resolution (#Entries, resolution range(Å))
$R_{free}$	130704	4898 (2.20-2.20)
Clashscore	141614	5594 (2.20-2.20)
Ramachandran outliers	138981	5503 (2.20-2.20)
Sidechain outliers	138945	5504 (2.20-2.20)
RSRZ outliers	127900	4800 (2.20-2.20)

The table below summarises the geometric issues observed across the polymeric chains and their fit to the electron density. The red, orange, yellow and green segments of the lower bar indicate the fraction of residues that contain outliers for  $\geq 3$ , 2, 1 and 0 types of geometric quality criteria respectively. A grey segment represents the fraction of residues that are not modelled. The numeric value for each fraction is indicated below the corresponding segment, with a dot representing fractions  $\leq 5\%$ . The upper red bar (where present) indicates the fraction of residues that have poor fit to the electron density. The numeric value is given above the bar.

Mol	Chain	Length	Quality of chain
1	A	246	
2	B	290	

## 2 Entry composition i

There are 5 unique types of molecules in this entry. The entry contains 3654 atoms, of which 0 are hydrogens and 0 are deuteriums.

In the tables below, the ZeroOcc column contains the number of atoms modelled with zero occupancy, the AltConf column contains the number of residues with at least one atom in alternate conformation and the Trace column contains the number of residues modelled with at most 2 atoms.

- Molecule 1 is a protein called N6-adenosine-methyltransferase catalytic subunit.

Mol	Chain	Residues	Atoms					ZeroOcc	AltConf	Trace
			Total	C	N	O	S			
1	A	201	1567	1006	273	279	9	0	0	0

There are 19 discrepancies between the modelled and reference sequences:

Chain	Residue	Modelled	Actual	Comment	Reference
A	335	MET	-	initiating methionine	UNP Q86U44
A	336	GLY	-	expression tag	UNP Q86U44
A	337	HIS	-	expression tag	UNP Q86U44
A	338	HIS	-	expression tag	UNP Q86U44
A	339	HIS	-	expression tag	UNP Q86U44
A	340	HIS	-	expression tag	UNP Q86U44
A	341	HIS	-	expression tag	UNP Q86U44
A	342	HIS	-	expression tag	UNP Q86U44
A	343	SER	-	expression tag	UNP Q86U44
A	344	SER	-	expression tag	UNP Q86U44
A	345	GLY	-	expression tag	UNP Q86U44
A	346	ARG	-	expression tag	UNP Q86U44
A	347	GLU	-	expression tag	UNP Q86U44
A	348	ASN	-	expression tag	UNP Q86U44
A	349	LEU	-	expression tag	UNP Q86U44
A	350	TYR	-	expression tag	UNP Q86U44
A	351	PHE	-	expression tag	UNP Q86U44
A	352	GLN	-	expression tag	UNP Q86U44
A	353	GLY	-	expression tag	UNP Q86U44

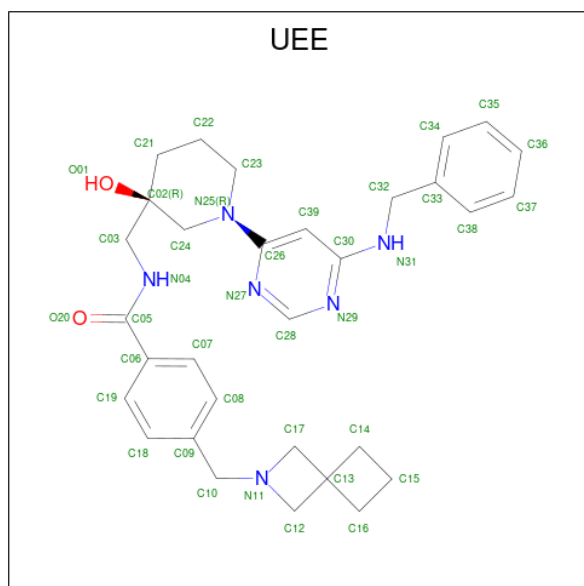
- Molecule 2 is a protein called N6-adenosine-methyltransferase non-catalytic subunit.

Mol	Chain	Residues	Atoms					ZeroOcc	AltConf	Trace
			Total	C	N	O	S			
2	B	242	1865	1195	315	342	13	0	1	0

There is a discrepancy between the modelled and reference sequences:

Chain	Residue	Modelled	Actual	Comment	Reference
B	106	MET	-	initiating methionine	UNP Q9HCE5

- Molecule 3 is (R)-4-((2-azaspiro[3.3]heptan-2-yl)methyl)-N-((1-(6-(benzylamino)pyrimidin-4-yl)-3-hydroxypiperidin-3-yl)methyl)benzamide (three-letter code: UEE) (formula: C<sub>31</sub>H<sub>38</sub>N<sub>6</sub>O<sub>2</sub>) (labeled as "Ligand of Interest" by depositor).



Mol	Chain	Residues	Atoms			ZeroOcc	AltConf	
			Total	C	N			O
3	A	1	39	31	6	2	0	0

- Molecule 4 is ACETATE ION (three-letter code: ACT) (formula: C<sub>2</sub>H<sub>3</sub>O<sub>2</sub>).



Mol	Chain	Residues	Atoms			ZeroOcc	AltConf
4	B	1	Total	C	O	0	0
			4	2	2		

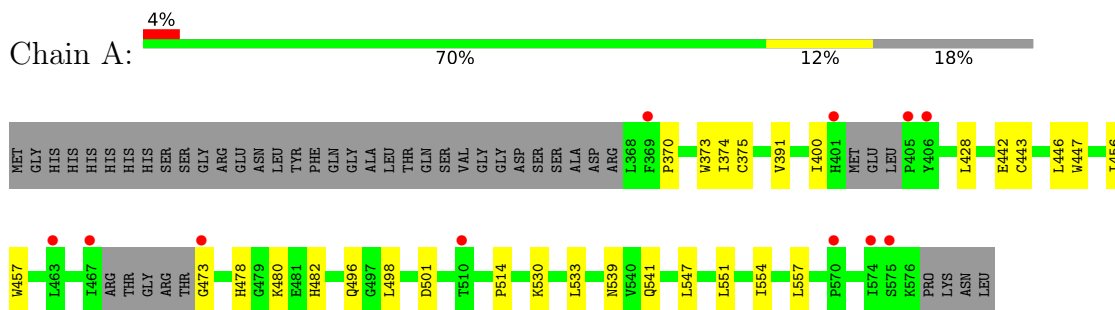
- Molecule 5 is water.

Mol	Chain	Residues	Atoms		ZeroOcc	AltConf
5	A	69	Total	O	0	0
			69	69		
5	B	110	Total	O	0	0
			110	110		

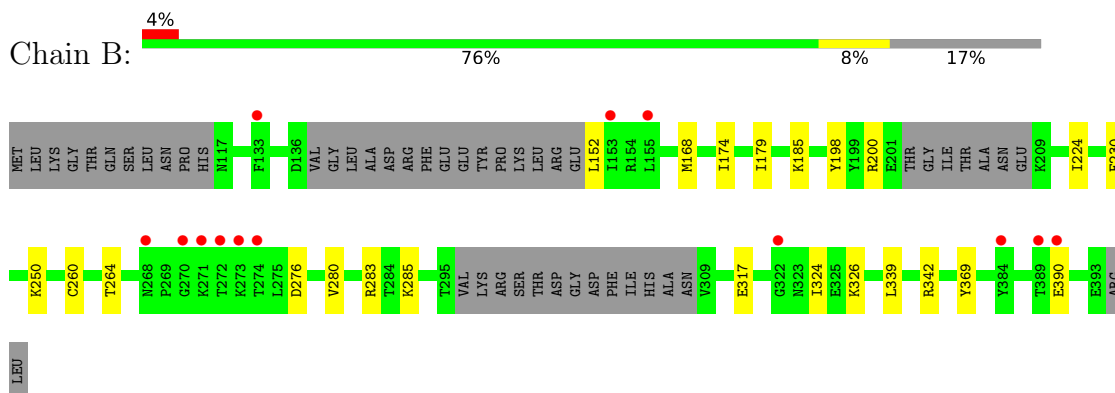
### 3 Residue-property plots [i](#)

These plots are drawn for all protein, RNA, DNA and oligosaccharide chains in the entry. The first graphic for a chain summarises the proportions of the various outlier classes displayed in the second graphic. The second graphic shows the sequence view annotated by issues in geometry and electron density. Residues are color-coded according to the number of geometric quality criteria for which they contain at least one outlier: green = 0, yellow = 1, orange = 2 and red = 3 or more. A red dot above a residue indicates a poor fit to the electron density ( $RSRZ > 2$ ). Stretches of 2 or more consecutive residues without any outlier are shown as a green connector. Residues present in the sample, but not in the model, are shown in grey.

- Molecule 1: N6-adenosine-methyltransferase catalytic subunit



- Molecule 2: N6-adenosine-methyltransferase non-catalytic subunit



## 4 Data and refinement statistics

Property	Value	Source
Space group	P 32 2 1	Depositor
Cell constants a, b, c, $\alpha$ , $\beta$ , $\gamma$	63.73Å 63.73Å 225.04Å 90.00° 90.00° 120.00°	Depositor
Resolution (Å)	44.46 – 2.20 44.46 – 2.20	Depositor EDS
% Data completeness (in resolution range)	99.7 (44.46-2.20) 99.7 (44.46-2.20)	Depositor EDS
$R_{merge}$	(Not available)	Depositor
$R_{sym}$	(Not available)	Depositor
$\langle I/\sigma(I) \rangle$ <sup>1</sup>	1.83 (at 2.20Å)	Xtrriage
Refinement program	PHENIX 1.19.2_4158	Depositor
R, $R_{free}$	0.202 , 0.250 0.201 , 0.247	Depositor DCC
$R_{free}$ test set	1399 reflections (5.00%)	wwPDB-VP
Wilson B-factor (Å <sup>2</sup> )	40.2	Xtrriage
Anisotropy	0.086	Xtrriage
Bulk solvent $k_{sol}$ (e/Å <sup>3</sup> ), $B_{sol}$ (Å <sup>2</sup> )	(Not available) , (Not available)	EDS
L-test for twinning <sup>2</sup>	$\langle  L  \rangle = 0.48$ , $\langle L^2 \rangle = 0.32$	Xtrriage
Estimated twinning fraction	0.042 for -h,-k,l	Xtrriage
$F_o, F_c$ correlation	0.95	EDS
Total number of atoms	3654	wwPDB-VP
Average B, all atoms (Å <sup>2</sup> )	43.0	wwPDB-VP

Xtrriage's analysis on translational NCS is as follows: *The largest off-origin peak in the Patterson function is 3.98% of the height of the origin peak. No significant pseudotranslation is detected.*

<sup>1</sup>Intensities estimated from amplitudes.

<sup>2</sup>Theoretical values of  $\langle |L| \rangle$ ,  $\langle L^2 \rangle$  for acentric reflections are 0.5, 0.333 respectively for untwinned datasets, and 0.375, 0.2 for perfectly twinned datasets.

## 5 Model quality [i](#)

### 5.1 Standard geometry [i](#)

Bond lengths and bond angles in the following residue types are not validated in this section: ACT, UEE

The Z score for a bond length (or angle) is the number of standard deviations the observed value is removed from the expected value. A bond length (or angle) with  $|Z| > 5$  is considered an outlier worth inspection. RMSZ is the root-mean-square of all Z scores of the bond lengths (or angles).

Mol	Chain	Bond lengths		Bond angles	
		RMSZ	# Z  >5	RMSZ	# Z  >5
1	A	0.44	0/1607	0.64	0/2189
2	B	0.45	0/1913	0.62	1/2605 (0.0%)
All	All	0.45	0/3520	0.63	1/4794 (0.0%)

There are no bond length outliers.

All (1) bond angle outliers are listed below:

Mol	Chain	Res	Type	Atoms	Z	Observed(°)	Ideal(°)
2	B	276	ASP	CB-CG-OD1	6.71	124.34	118.30

There are no chirality outliers.

There are no planarity outliers.

### 5.2 Too-close contacts [i](#)

In the following table, the Non-H and H(model) columns list the number of non-hydrogen atoms and hydrogen atoms in the chain respectively. The H(added) column lists the number of hydrogen atoms added and optimized by MolProbity. The Clashes column lists the number of clashes within the asymmetric unit, whereas Symm-Clashes lists symmetry-related clashes.

Mol	Chain	Non-H	H(model)	H(added)	Clashes	Symm-Clashes
1	A	1567	0	1490	18	0
2	B	1865	0	1711	18	0
3	A	39	0	0	0	0
4	B	4	0	3	0	0
5	A	69	0	0	1	0
5	B	110	0	0	5	0
All	All	3654	0	3204	33	0



The all-atom clashscore is defined as the number of clashes found per 1000 atoms (including hydrogen atoms). The all-atom clashscore for this structure is 5.

All (33) close contacts within the same asymmetric unit are listed below, sorted by their clash magnitude.

Atom-1	Atom-2	Interatomic distance (Å)	Clash overlap (Å)
1:A:375:CYS:SG	5:A:761:HOH:O	2.27	0.93
1:A:373:TRP:HB2	1:A:551:LEU:HD13	1.70	0.73
1:A:391:VAL:HB	1:A:530:LYS:HG2	1.70	0.73
2:B:168:MET:HE3	2:B:369:TYR:HA	1.78	0.66
2:B:152:LEU:N	5:B:503:HOH:O	2.29	0.65
1:A:374:ILE:HG23	1:A:554:ILE:HD12	1.81	0.63
2:B:174:ILE:O	5:B:501:HOH:O	2.16	0.62
2:B:179:ILE:HG13	2:B:224:ILE:HD13	1.85	0.59
2:B:198:TYR:HB3	2:B:324:ILE:HG22	1.87	0.56
2:B:390:GLU:N	2:B:390:GLU:OE2	2.38	0.54
1:A:539:ASN:O	1:A:541:GLN:HG2	2.08	0.53
1:A:442:GLU:O	1:A:446:LEU:HG	2.09	0.52
1:A:456:ILE:HD13	2:B:260[A]:CYS:SG	2.50	0.52
1:A:533:LEU:HD13	1:A:547:LEU:HD12	1.92	0.51
1:A:442:GLU:HG2	1:A:446:LEU:HD11	1.96	0.47
2:B:230:PHE:CE1	2:B:339:LEU:HD22	2.51	0.45
2:B:250:LYS:NZ	5:B:508:HOH:O	2.44	0.45
1:A:501:ASP:OD2	2:B:283:ARG:HA	2.16	0.45
2:B:326:LYS:NZ	5:B:509:HOH:O	2.47	0.44
1:A:473:GLY:HA3	1:A:478:HIS:CE1	2.52	0.44
1:A:533:LEU:CD1	1:A:547:LEU:HD12	2.48	0.43
1:A:498:LEU:HD23	1:A:498:LEU:HA	1.82	0.42
1:A:457:TRP:CE3	1:A:514:PRO:HD3	2.54	0.42
1:A:480:LYS:HD2	1:A:482:HIS:NE2	2.34	0.42
2:B:185:LYS:NZ	5:B:502:HOH:O	2.25	0.42
2:B:168:MET:HE3	2:B:168:MET:HB3	1.90	0.42
1:A:443:CYS:HB3	1:A:447:TRP:CZ2	2.54	0.42
2:B:168:MET:CE	2:B:369:TYR:HD1	2.33	0.42
2:B:260[A]:CYS:SG	2:B:285:LYS:HD2	2.61	0.41
1:A:496:GLN:HG2	2:B:280:VAL:HA	2.02	0.41
1:A:370:PRO:HG2	1:A:557:LEU:HD13	2.02	0.41
2:B:264:THR:OG1	2:B:317:GLU:HA	2.21	0.40
2:B:185:LYS:O	2:B:342:ARG:HD2	2.22	0.40

There are no symmetry-related clashes.

## 5.3 Torsion angles [i](#)

### 5.3.1 Protein backbone [i](#)

In the following table, the Percentiles column shows the percent Ramachandran outliers of the chain as a percentile score with respect to all X-ray entries followed by that with respect to entries of similar resolution.

The Analysed column shows the number of residues for which the backbone conformation was analysed, and the total number of residues.

Mol	Chain	Analysed	Favoured	Allowed	Outliers	Percentiles	
1	A	195/246 (79%)	189 (97%)	6 (3%)	0	100	100
2	B	235/290 (81%)	228 (97%)	6 (3%)	1 (0%)	34	37
All	All	430/536 (80%)	417 (97%)	12 (3%)	1 (0%)	47	55

All (1) Ramachandran outliers are listed below:

Mol	Chain	Res	Type
2	B	200	ARG

### 5.3.2 Protein sidechains [i](#)

In the following table, the Percentiles column shows the percent sidechain outliers of the chain as a percentile score with respect to all X-ray entries followed by that with respect to entries of similar resolution.

The Analysed column shows the number of residues for which the sidechain conformation was analysed, and the total number of residues.

Mol	Chain	Analysed	Rotameric	Outliers	Percentiles	
1	A	161/215 (75%)	159 (99%)	2 (1%)	71	83
2	B	187/259 (72%)	187 (100%)	0	100	100
All	All	348/474 (73%)	346 (99%)	2 (1%)	86	93

All (2) residues with a non-rotameric sidechain are listed below:

Mol	Chain	Res	Type
1	A	400	ILE
1	A	428	LEU

Sometimes sidechains can be flipped to improve hydrogen bonding and reduce clashes. All (2) such sidechains are listed below:

Mol	Chain	Res	Type
1	A	512	HIS
1	A	538	HIS

### 5.3.3 RNA [i](#)

There are no RNA molecules in this entry.

## 5.4 Non-standard residues in protein, DNA, RNA chains [i](#)

There are no non-standard protein/DNA/RNA residues in this entry.

## 5.5 Carbohydrates [i](#)

There are no monosaccharides in this entry.

## 5.6 Ligand geometry [i](#)

2 ligands are modelled in this entry.

In the following table, the Counts columns list the number of bonds (or angles) for which Mogul statistics could be retrieved, the number of bonds (or angles) that are observed in the model and the number of bonds (or angles) that are defined in the Chemical Component Dictionary. The Link column lists molecule types, if any, to which the group is linked. The Z score for a bond length (or angle) is the number of standard deviations the observed value is removed from the expected value. A bond length (or angle) with  $|Z| > 2$  is considered an outlier worth inspection. RMSZ is the root-mean-square of all Z scores of the bond lengths (or angles).

Mol	Type	Chain	Res	Link	Bond lengths			Bond angles		
					Counts	RMSZ	# Z  > 2	Counts	RMSZ	# Z  > 2
3	UEE	A	601	-	40,44,44	7.05	30 (75%)	54,63,63	2.47	18 (33%)
4	ACT	B	401	-	1,3,3	7.20	1 (100%)	0,3,3	-	-

In the following table, the Chirals column lists the number of chiral outliers, the number of chiral centers analysed, the number of these observed in the model and the number defined in the Chemical Component Dictionary. Similar counts are reported in the Torsion and Rings columns. '-' means no outliers of that kind were identified.

Mol	Type	Chain	Res	Link	Chirals	Torsions	Rings
3	UEE	A	601	-	-	9/23/53/53	0/6/6/6

All (31) bond length outliers are listed below:

Mol	Chain	Res	Type	Atoms	Z	Observed(Å)	Ideal(Å)
3	A	601	UEE	C10-N11	-19.25	1.10	1.47
3	A	601	UEE	C17-C13	-13.66	1.42	1.54
3	A	601	UEE	C12-C13	-13.60	1.42	1.54
3	A	601	UEE	C07-C06	9.25	1.55	1.39
3	A	601	UEE	C08-C07	9.20	1.55	1.38
3	A	601	UEE	C28-N29	8.88	1.50	1.33
3	A	601	UEE	C30-N31	8.82	1.49	1.36
3	A	601	UEE	C21-C02	-8.49	1.44	1.52
3	A	601	UEE	C24-N25	8.33	1.53	1.46
3	A	601	UEE	C19-C18	8.29	1.53	1.38
3	A	601	UEE	C28-N27	8.22	1.49	1.33
3	A	601	UEE	C35-C34	7.23	1.54	1.38
4	B	401	ACT	CH3-C	7.20	1.57	1.48
3	A	601	UEE	C37-C38	7.09	1.53	1.38
3	A	601	UEE	C19-C06	7.07	1.51	1.39
3	A	601	UEE	C38-C33	6.92	1.53	1.38
3	A	601	UEE	C34-C33	6.82	1.53	1.38
3	A	601	UEE	C08-C09	6.77	1.53	1.38
3	A	601	UEE	C18-C09	6.51	1.52	1.38
3	A	601	UEE	C39-C26	6.50	1.49	1.39
3	A	601	UEE	C30-N29	6.37	1.46	1.34
3	A	601	UEE	C36-C35	5.79	1.53	1.38
3	A	601	UEE	C37-C36	5.68	1.53	1.38
3	A	601	UEE	C26-N27	5.33	1.45	1.34
3	A	601	UEE	C05-N04	5.32	1.45	1.33
3	A	601	UEE	C26-N25	5.13	1.48	1.37
3	A	601	UEE	C39-C30	4.44	1.50	1.39
3	A	601	UEE	C23-N25	3.75	1.52	1.46
3	A	601	UEE	C21-C22	-2.61	1.46	1.52
3	A	601	UEE	C10-C09	2.49	1.55	1.51
3	A	601	UEE	C14-C13	-2.46	1.52	1.55

All (18) bond angle outliers are listed below:

Mol	Chain	Res	Type	Atoms	Z	Observed(°)	Ideal(°)
3	A	601	UEE	C03-N04-C05	-7.03	111.30	122.89
3	A	601	UEE	C09-C10-N11	-6.49	100.52	113.12
3	A	601	UEE	N29-C28-N27	-5.41	120.14	128.60
3	A	601	UEE	C15-C16-C13	-4.75	85.39	89.16
3	A	601	UEE	C14-C13-C12	-4.63	108.53	120.86
3	A	601	UEE	C28-N27-C26	4.58	118.94	114.94
3	A	601	UEE	C16-C13-C12	3.83	131.06	120.86
3	A	601	UEE	C15-C14-C13	-3.81	86.13	89.16

*Continued on next page...*

*Continued from previous page...*

Mol	Chain	Res	Type	Atoms	Z	Observed(°)	Ideal(°)
3	A	601	UEE	O20-C05-N04	-3.29	116.05	122.61
3	A	601	UEE	C10-C09-C18	-3.10	114.94	120.77
3	A	601	UEE	C39-C26-N25	-3.07	118.64	122.29
3	A	601	UEE	C06-C05-N04	2.87	123.25	117.09
3	A	601	UEE	C10-C09-C08	2.75	125.94	120.77
3	A	601	UEE	C16-C13-C17	2.51	127.55	120.86
3	A	601	UEE	C21-C22-C23	2.44	114.83	110.69
3	A	601	UEE	C39-C30-N29	-2.20	119.69	122.75
3	A	601	UEE	N31-C30-N29	2.12	120.15	116.95
3	A	601	UEE	O01-C02-C21	2.02	113.00	108.19

There are no chirality outliers.

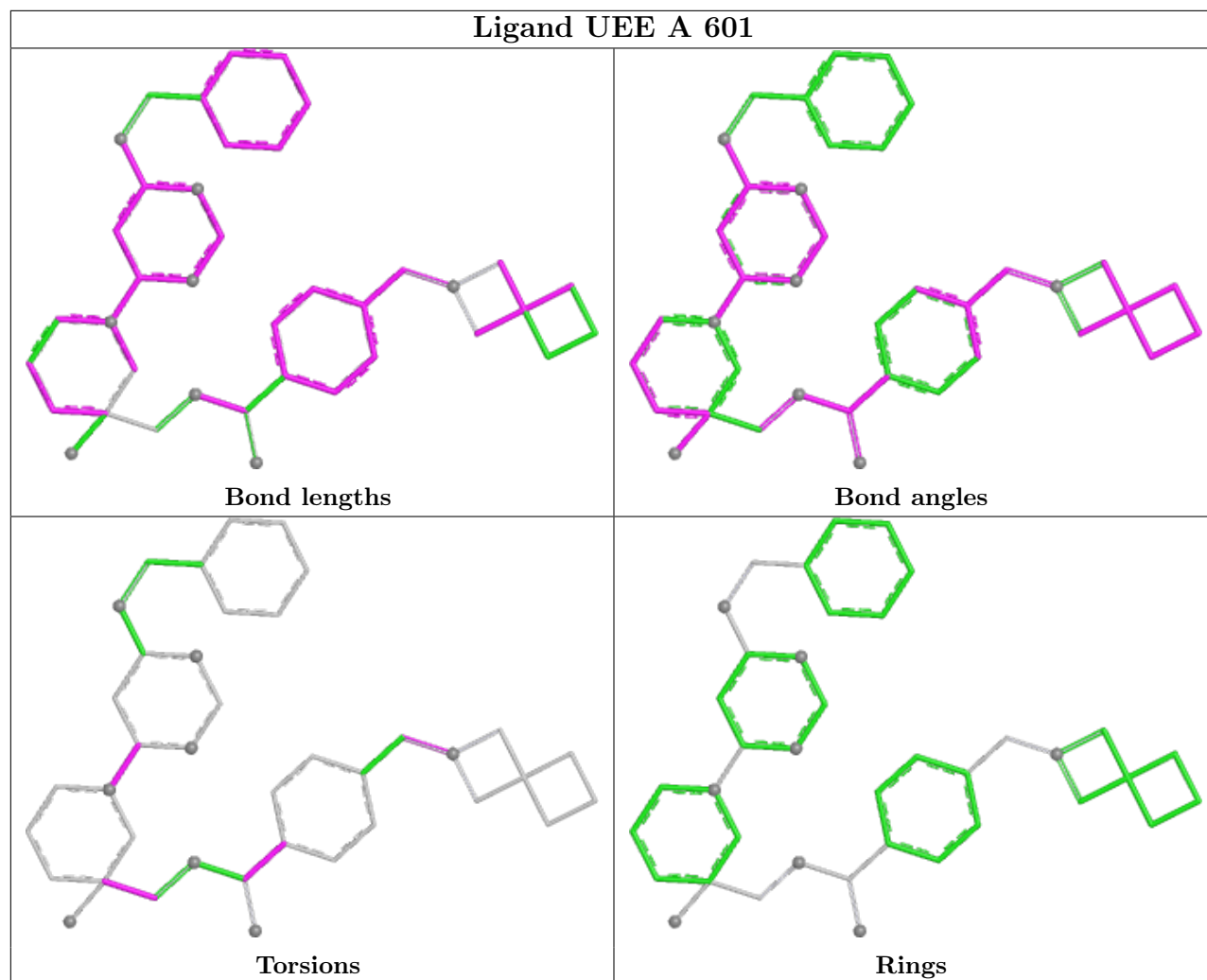
All (9) torsion outliers are listed below:

Mol	Chain	Res	Type	Atoms
3	A	601	UEE	C09-C10-N11-C17
3	A	601	UEE	C09-C10-N11-C12
3	A	601	UEE	N04-C05-C06-C07
3	A	601	UEE	N04-C05-C06-C19
3	A	601	UEE	O20-C05-C06-C07
3	A	601	UEE	O20-C05-C06-C19
3	A	601	UEE	N27-C26-N25-C23
3	A	601	UEE	O01-C02-C03-N04
3	A	601	UEE	C39-C26-N25-C23

There are no ring outliers.

No monomer is involved in short contacts.

The following is a two-dimensional graphical depiction of Mogul quality analysis of bond lengths, bond angles, torsion angles, and ring geometry for all instances of the Ligand of Interest. In addition, ligands with molecular weight > 250 and outliers as shown on the validation Tables will also be included. For torsion angles, if less than 5% of the Mogul distribution of torsion angles is within 10 degrees of the torsion angle in question, then that torsion angle is considered an outlier. Any bond that is central to one or more torsion angles identified as an outlier by Mogul will be highlighted in the graph. For rings, the root-mean-square deviation (RMSD) between the ring in question and similar rings identified by Mogul is calculated over all ring torsion angles. If the average RMSD is greater than 60 degrees and the minimal RMSD between the ring in question and any Mogul-identified rings is also greater than 60 degrees, then that ring is considered an outlier. The outliers are highlighted in purple. The color gray indicates Mogul did not find sufficient equivalents in the CSD to analyse the geometry.



## 5.7 Other polymers [\(i\)](#)

There are no such residues in this entry.

## 5.8 Polymer linkage issues [\(i\)](#)

There are no chain breaks in this entry.

## 6 Fit of model and data

### 6.1 Protein, DNA and RNA chains

In the following table, the column labelled ‘#RSRZ > 2’ contains the number (and percentage) of RSRZ outliers, followed by percent RSRZ outliers for the chain as percentile scores relative to all X-ray entries and entries of similar resolution. The OWAB column contains the minimum, median, 95<sup>th</sup> percentile and maximum values of the occupancy-weighted average B-factor per residue. The column labelled ‘Q < 0.9’ lists the number of (and percentage) of residues with an average occupancy less than 0.9.

Mol	Chain	Analysed	<RSRZ>	#RSRZ>2	OWAB(Å <sup>2</sup> )	Q<0.9
1	A	201/246 (81%)	0.28	11 (5%) 25 24	29, 41, 66, 77	0
2	B	242/290 (83%)	0.29	13 (5%) 25 24	27, 40, 72, 93	0
All	All	443/536 (82%)	0.28	24 (5%) 25 24	27, 40, 70, 93	0

All (24) RSRZ outliers are listed below:

Mol	Chain	Res	Type	RSRZ
2	B	270	GLY	6.8
2	B	273	LYS	5.9
2	B	272	THR	5.4
1	A	401	HIS	5.4
1	A	574	ILE	5.3
1	A	467	ILE	4.4
1	A	570	PRO	4.3
1	A	473	GLY	3.7
2	B	153	ILE	3.7
2	B	155	LEU	3.4
2	B	390	GLU	3.2
2	B	384	TYR	2.9
1	A	510	THR	2.7
1	A	405	PRO	2.6
2	B	271	LYS	2.4
1	A	575	SER	2.4
2	B	322	GLY	2.3
2	B	389	THR	2.3
2	B	133	PHE	2.2
1	A	369	PHE	2.2
1	A	463	LEU	2.1
2	B	274	THR	2.1
2	B	268	ASN	2.0
1	A	406	TYR	2.0

## 6.2 Non-standard residues in protein, DNA, RNA chains [i](#)

There are no non-standard protein/DNA/RNA residues in this entry.

## 6.3 Carbohydrates [i](#)

There are no monosaccharides in this entry.

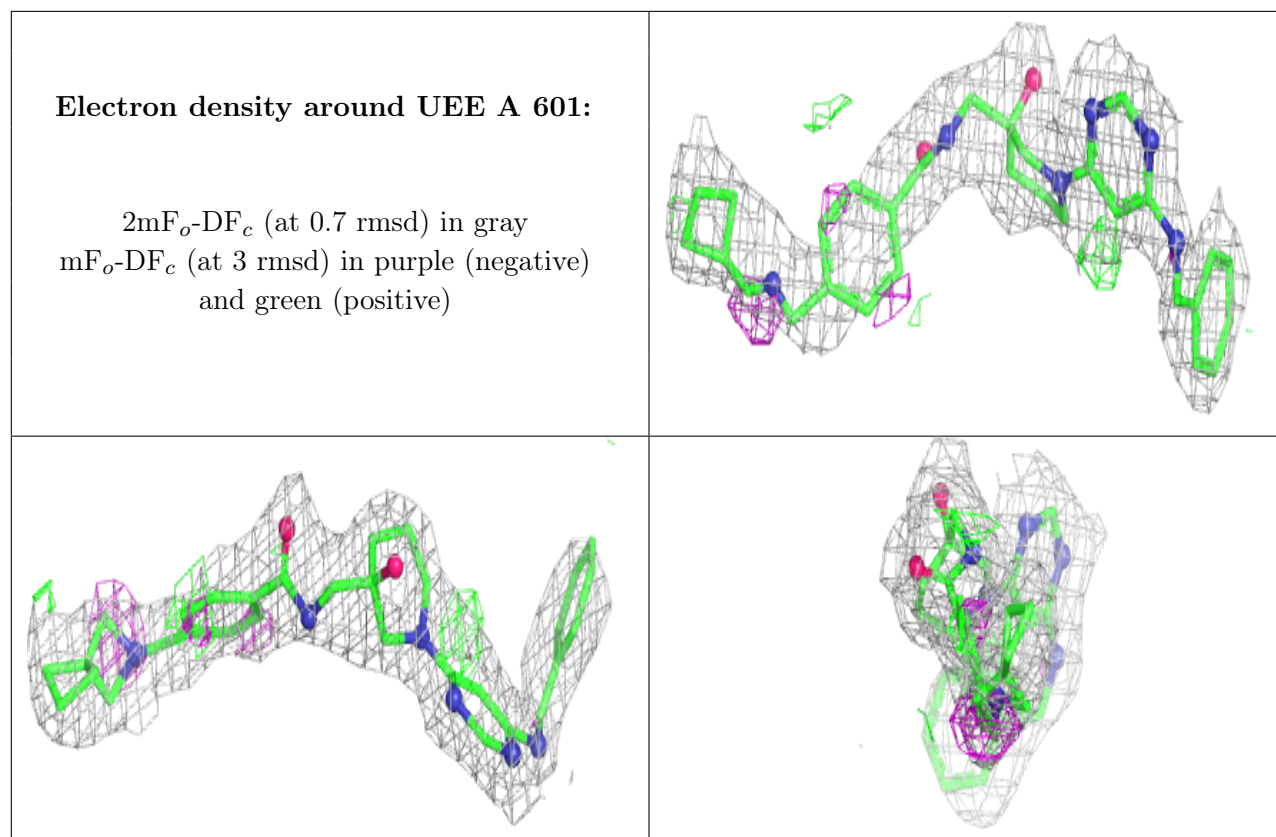
## 6.4 Ligands [i](#)

In the following table, the Atoms column lists the number of modelled atoms in the group and the number defined in the chemical component dictionary. The B-factors column lists the minimum, median, 95<sup>th</sup> percentile and maximum values of B factors of atoms in the group. The column labelled 'Q< 0.9' lists the number of atoms with occupancy less than 0.9.

Mol	Type	Chain	Res	Atoms	RSCC	RSR	B-factors(Å <sup>2</sup> )	Q<0.9
3	UEE	A	601	39/39	0.85	0.22	35,52,67,71	0
4	ACT	B	401	4/4	0.95	0.16	34,35,37,38	0

The following is a graphical depiction of the model fit to experimental electron density of all instances of the Ligand of Interest. In addition, ligands with molecular weight > 250 and outliers as shown on the geometry validation Tables will also be included. Each fit is shown from different orientation to approximate a three-dimensional view.





## 6.5 Other polymers [i](#)

There are no such residues in this entry.