



Full wwPDB X-ray Structure Validation Report ⓘ

Oct 10, 2023 – 02:38 AM EDT

PDB ID : 7MK8
Title : Crystal structure of a surface mutant of human fetal-specific CYP3A7 bound to dithiothreitol
Authors : Sevrioukova, I.F.
Deposited on : 2021-04-21
Resolution : 2.15 Å(reported)

This is a Full wwPDB X-ray Structure Validation Report for a publicly released PDB entry.

We welcome your comments at validation@mail.wwpdb.org

A user guide is available at

<https://www.wwpdb.org/validation/2017/XrayValidationReportHelp>

with specific help available everywhere you see the ⓘ symbol.

The types of validation reports are described at

<http://www.wwpdb.org/validation/2017/FAQs#types>.

The following versions of software and data (see [references ⓘ](#)) were used in the production of this report:

MolProbity : 4.02b-467
Mogul : 1.8.5 (274361), CSD as541be (2020)
Xtrriage (Phenix) : 1.13
EDS : 2.35.1
buster-report : 1.1.7 (2018)
Percentile statistics : 20191225.v01 (using entries in the PDB archive December 25th 2019)
Refmac : 5.8.0158
CCP4 : 7.0.044 (Gargrove)
Ideal geometry (proteins) : Engh & Huber (2001)
Ideal geometry (DNA, RNA) : Parkinson et al. (1996)
Validation Pipeline (wwPDB-VP) : 2.35.1

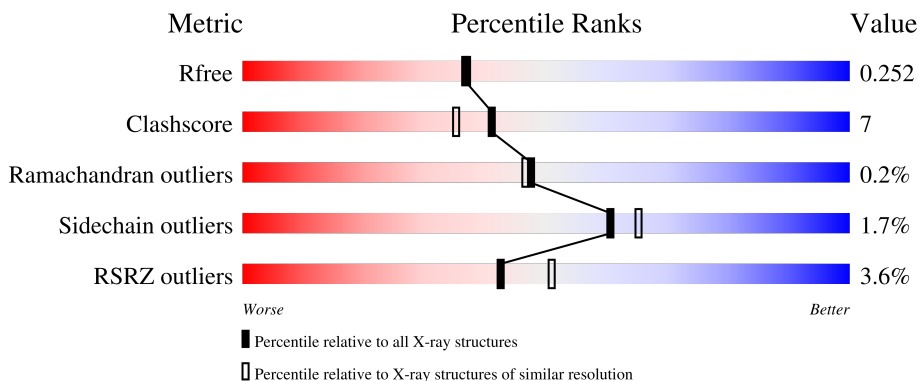
1 Overall quality at a glance

The following experimental techniques were used to determine the structure:

X-RAY DIFFRACTION

The reported resolution of this entry is 2.15 Å.

Percentile scores (ranging between 0-100) for global validation metrics of the entry are shown in the following graphic. The table shows the number of entries on which the scores are based.



Metric	Whole archive (#Entries)	Similar resolution (#Entries, resolution range(Å))
R_{free}	130704	1479 (2.16-2.16)
Clashscore	141614	1585 (2.16-2.16)
Ramachandran outliers	138981	1560 (2.16-2.16)
Sidechain outliers	138945	1559 (2.16-2.16)
RSRZ outliers	127900	1456 (2.16-2.16)

The table below summarises the geometric issues observed across the polymeric chains and their fit to the electron density. The red, orange, yellow and green segments of the lower bar indicate the fraction of residues that contain outliers for ≥ 3 , 2, 1 and 0 types of geometric quality criteria respectively. A grey segment represents the fraction of residues that are not modelled. The numeric value for each fraction is indicated below the corresponding segment, with a dot representing fractions $\leq 5\%$. The upper red bar (where present) indicates the fraction of residues that have poor fit to the electron density. The numeric value is given above the bar.

Mol	Chain	Length	Quality of chain
1	A	519	 3% 75% 13% 11%
1	B	519	 3% 72% 17% 10%

The following table lists non-polymeric compounds, carbohydrate monomers and non-standard residues in protein, DNA, RNA chains that are outliers for geometric or electron-density-fit criteria:

Mol	Type	Chain	Res	Chirality	Geometry	Clashes	Electron density
4	DTV	A	603	-	X	-	-

2 Entry composition [i](#)

There are 5 unique types of molecules in this entry. The entry contains 7867 atoms, of which 0 are hydrogens and 0 are deuteriums.

In the tables below, the ZeroOcc column contains the number of atoms modelled with zero occupancy, the AltConf column contains the number of residues with at least one atom in alternate conformation and the Trace column contains the number of residues modelled with at most 2 atoms.

- Molecule 1 is a protein called Isoform 2 of Cytochrome P450 3A7.

Mol	Chain	Residues	Atoms					ZeroOcc	AltConf	Trace
			Total	C	N	O	S			
1	A	462	3727	2433	609	665	20	0	5	0
1	B	465	3794	2477	625	672	20	0	10	0

There are 60 discrepancies between the modelled and reference sequences:

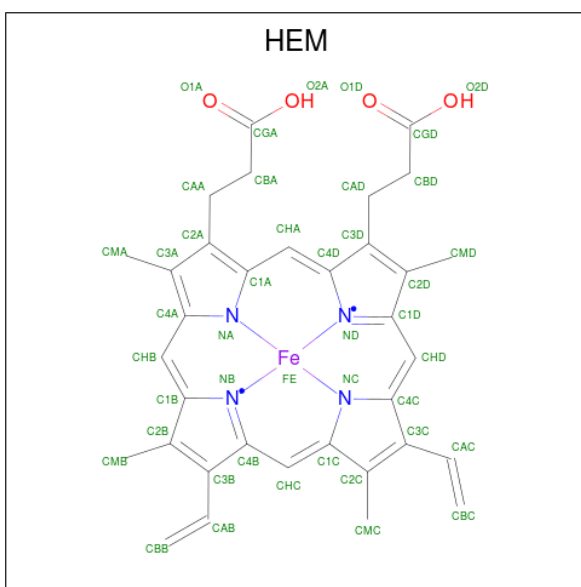
Chain	Residue	Modelled	Actual	Comment	Reference
A	?	-	LEU	deletion	UNP P24462-2
A	?	-	ILE	deletion	UNP P24462-2
A	?	-	PRO	deletion	UNP P24462-2
A	?	-	ASN	deletion	UNP P24462-2
A	?	-	LEU	deletion	UNP P24462-2
A	?	-	ALA	deletion	UNP P24462-2
A	?	-	VAL	deletion	UNP P24462-2
A	?	-	GLU	deletion	UNP P24462-2
A	?	-	THR	deletion	UNP P24462-2
A	?	-	TRP	deletion	UNP P24462-2
A	?	-	LEU	deletion	UNP P24462-2
A	?	-	LEU	deletion	UNP P24462-2
A	?	-	LEU	deletion	UNP P24462-2
A	?	-	ALA	deletion	UNP P24462-2
A	?	-	VAL	deletion	UNP P24462-2
A	?	-	SER	deletion	UNP P24462-2
A	?	-	LEU	deletion	UNP P24462-2
A	?	-	ILE	deletion	UNP P24462-2
A	?	-	LEU	deletion	UNP P24462-2
A	?	-	LEU	deletion	UNP P24462-2
A	69	GLY	ARG	engineered mutation	UNP P24462-2
A	77	GLY	CYS	engineered mutation	UNP P24462-2
A	244	GLU	LYS	engineered mutation	UNP P24462-2
A	421	ALA	LYS	engineered mutation	UNP P24462-2
A	422	ALA	LYS	engineered mutation	UNP P24462-2

Continued on next page...

Continued from previous page...

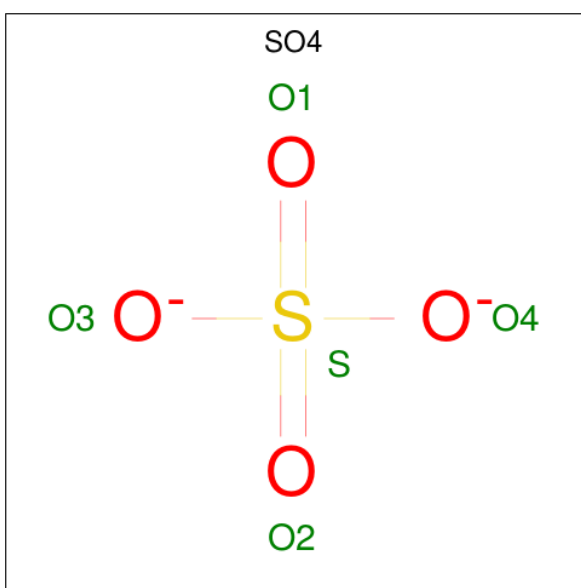
Chain	Residue	Modelled	Actual	Comment	Reference
A	424	ALA	LYS	engineered mutation	UNP P24462-2
A	536	HIS	-	expression tag	UNP P24462-2
A	537	HIS	-	expression tag	UNP P24462-2
A	538	HIS	-	expression tag	UNP P24462-2
A	539	HIS	-	expression tag	UNP P24462-2
B	?	-	LEU	deletion	UNP P24462-2
B	?	-	ILE	deletion	UNP P24462-2
B	?	-	PRO	deletion	UNP P24462-2
B	?	-	ASN	deletion	UNP P24462-2
B	?	-	LEU	deletion	UNP P24462-2
B	?	-	ALA	deletion	UNP P24462-2
B	?	-	VAL	deletion	UNP P24462-2
B	?	-	GLU	deletion	UNP P24462-2
B	?	-	THR	deletion	UNP P24462-2
B	?	-	TRP	deletion	UNP P24462-2
B	?	-	LEU	deletion	UNP P24462-2
B	?	-	LEU	deletion	UNP P24462-2
B	?	-	LEU	deletion	UNP P24462-2
B	?	-	ALA	deletion	UNP P24462-2
B	?	-	VAL	deletion	UNP P24462-2
B	?	-	SER	deletion	UNP P24462-2
B	?	-	LEU	deletion	UNP P24462-2
B	?	-	ILE	deletion	UNP P24462-2
B	?	-	LEU	deletion	UNP P24462-2
B	?	-	LEU	deletion	UNP P24462-2
B	69	GLY	ARG	engineered mutation	UNP P24462-2
B	77	GLY	CYS	engineered mutation	UNP P24462-2
B	244	GLU	LYS	engineered mutation	UNP P24462-2
B	421	ALA	LYS	engineered mutation	UNP P24462-2
B	422	ALA	LYS	engineered mutation	UNP P24462-2
B	424	ALA	LYS	engineered mutation	UNP P24462-2
B	536	HIS	-	expression tag	UNP P24462-2
B	537	HIS	-	expression tag	UNP P24462-2
B	538	HIS	-	expression tag	UNP P24462-2
B	539	HIS	-	expression tag	UNP P24462-2

- Molecule 2 is PROTOPORPHYRIN IX CONTAINING FE (three-letter code: HEM) (formula: C₃₄H₃₂FeN₄O₄).



Mol	Chain	Residues	Atoms				ZeroOcc	AltConf	
			Total	C	Fe	N			O
2	A	1	43	34	1	4	4	0	0
2	B	1	43	34	1	4	4	0	0

- Molecule 3 is SULFATE ION (three-letter code: SO4) (formula: O₄S).



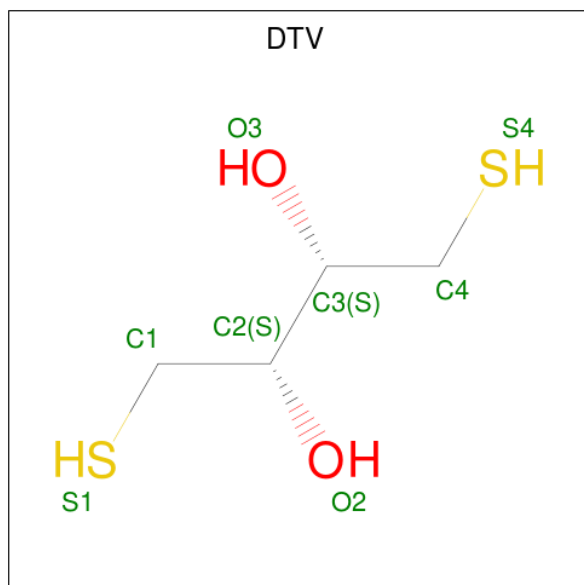
Mol	Chain	Residues	Atoms			ZeroOcc	AltConf
			Total	O	S		
3	A	1	5	4	1	0	0
3	A	1	5	4	1	0	0

Continued on next page...

Continued from previous page...

Mol	Chain	Residues	Atoms			ZeroOcc	AltConf
3	B	1	Total	O	S	0	0
			5	4	1		

- Molecule 4 is (2S,3S)-1,4-DIMERCAPTOBUTANE-2,3-DIOL (three-letter code: DTV) (formula: C₄H₁₀O₂S₂) (labeled as "Ligand of Interest" by depositor).



Mol	Chain	Residues	Atoms				ZeroOcc	AltConf
4	A	1	Total	C	O	S	0	0
			8	4	2	2		
4	B	1	Total	C	O	S	0	0
			8	4	2	2		

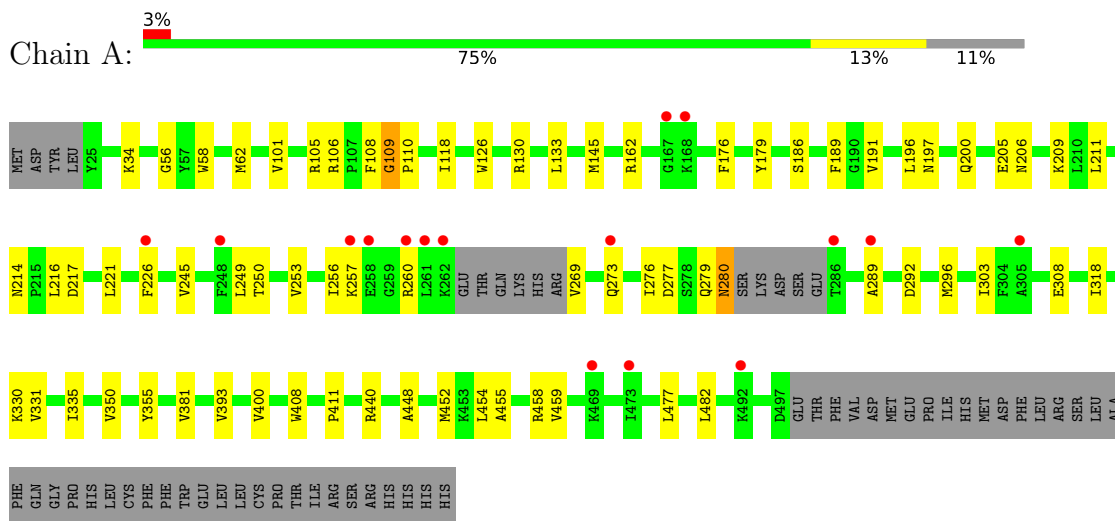
- Molecule 5 is water.

Mol	Chain	Residues	Atoms		ZeroOcc	AltConf
5	A	119	Total	O	0	0
			119	119		
5	B	110	Total	O	0	0
			110	110		

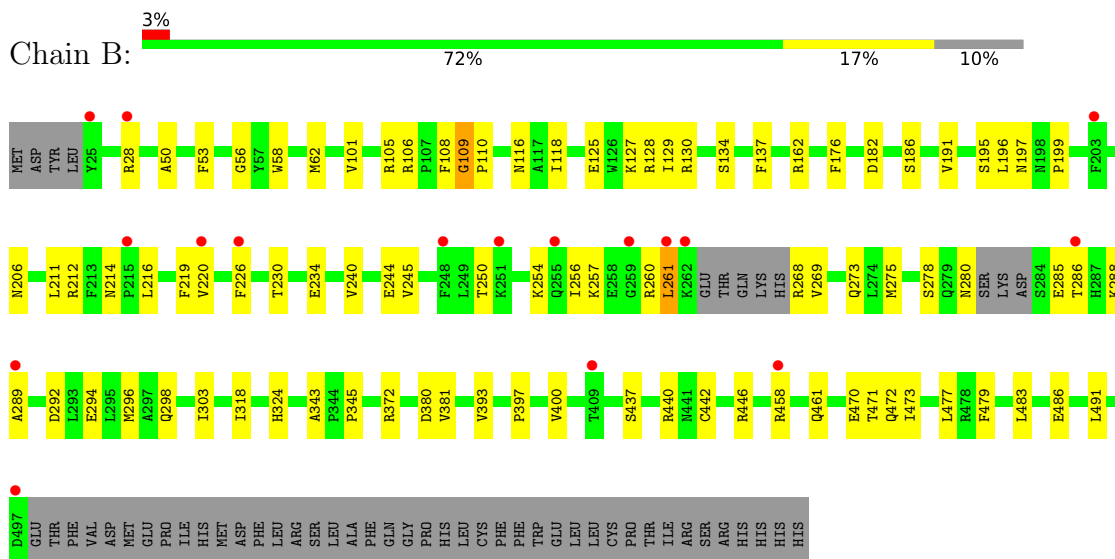
3 Residue-property plots

These plots are drawn for all protein, RNA, DNA and oligosaccharide chains in the entry. The first graphic for a chain summarises the proportions of the various outlier classes displayed in the second graphic. The second graphic shows the sequence view annotated by issues in geometry and electron density. Residues are color-coded according to the number of geometric quality criteria for which they contain at least one outlier: green = 0, yellow = 1, orange = 2 and red = 3 or more. A red dot above a residue indicates a poor fit to the electron density ($RSRZ > 2$). Stretches of 2 or more consecutive residues without any outlier are shown as a green connector. Residues present in the sample, but not in the model, are shown in grey.

• Molecule 1: Isoform 2 of Cytochrome P450 3A7



• Molecule 1: Isoform 2 of Cytochrome P450 3A7



4 Data and refinement statistics

Property	Value	Source
Space group	C 2 2 21	Depositor
Cell constants a, b, c, α , β , γ	72.29Å 205.12Å 156.55Å 90.00° 90.00° 90.00°	Depositor
Resolution (Å)	49.67 – 2.15 49.67 – 2.15	Depositor EDS
% Data completeness (in resolution range)	99.0 (49.67-2.15) 99.0 (49.67-2.15)	Depositor EDS
R_{merge}	0.12	Depositor
R_{sym}	(Not available)	Depositor
$\langle I/\sigma(I) \rangle$ ¹	1.39 (at 2.16Å)	Xtrriage
Refinement program	PHENIX 1.11.1_2575	Depositor
R, R_{free}	0.203 , 0.253 0.206 , 0.252	Depositor DCC
R_{free} test set	3068 reflections (4.87%)	wwPDB-VP
Wilson B-factor (Å ²)	43.5	Xtrriage
Anisotropy	0.598	Xtrriage
Bulk solvent k_{sol} (e/Å ³), B_{sol} (Å ²)	0.31 , 48.1	EDS
L-test for twinning ²	$\langle L \rangle = 0.49$, $\langle L^2 \rangle = 0.32$	Xtrriage
Estimated twinning fraction	No twinning to report.	Xtrriage
F_o, F_c correlation	0.96	EDS
Total number of atoms	7867	wwPDB-VP
Average B, all atoms (Å ²)	61.0	wwPDB-VP

Xtrriage's analysis on translational NCS is as follows: *The largest off-origin peak in the Patterson function is 4.19% of the height of the origin peak. No significant pseudotranslation is detected.*

¹Intensities estimated from amplitudes.

²Theoretical values of $\langle |L| \rangle$, $\langle L^2 \rangle$ for acentric reflections are 0.5, 0.333 respectively for untwinned datasets, and 0.375, 0.2 for perfectly twinned datasets.

5 Model quality [i](#)

5.1 Standard geometry [i](#)

Bond lengths and bond angles in the following residue types are not validated in this section: SO4, HEM, DTV

The Z score for a bond length (or angle) is the number of standard deviations the observed value is removed from the expected value. A bond length (or angle) with $|Z| > 5$ is considered an outlier worth inspection. RMSZ is the root-mean-square of all Z scores of the bond lengths (or angles).

Mol	Chain	Bond lengths		Bond angles	
		RMSZ	# Z >5	RMSZ	# Z >5
1	A	0.38	0/3833	0.56	0/5194
1	B	0.38	0/3917	0.55	0/5305
All	All	0.38	0/7750	0.56	0/10499

There are no bond length outliers.

There are no bond angle outliers.

There are no chirality outliers.

There are no planarity outliers.

5.2 Too-close contacts [i](#)

In the following table, the Non-H and H(model) columns list the number of non-hydrogen atoms and hydrogen atoms in the chain respectively. The H(added) column lists the number of hydrogen atoms added and optimized by MolProbity. The Clashes column lists the number of clashes within the asymmetric unit, whereas Symm-Clashes lists symmetry-related clashes.

Mol	Chain	Non-H	H(model)	H(added)	Clashes	Symm-Clashes
1	A	3727	0	3836	43	0
1	B	3794	0	3917	64	0
2	A	43	0	30	2	0
2	B	43	0	30	5	0
3	A	10	0	0	0	0
3	B	5	0	0	1	0
4	A	8	0	10	1	0
4	B	8	0	10	0	0
5	A	119	0	0	1	0
5	B	110	0	0	4	0
All	All	7867	0	7833	110	0

The all-atom clashscore is defined as the number of clashes found per 1000 atoms (including hydrogen atoms). The all-atom clashscore for this structure is 7.

All (110) close contacts within the same asymmetric unit are listed below, sorted by their clash magnitude.

Atom-1	Atom-2	Interatomic distance (Å)	Clash overlap (Å)
1:B:285:GLU:HG2	1:B:286:THR:H	1.33	0.91
1:A:280:ASN:HD22	1:A:280:ASN:N	1.77	0.79
1:A:206:ASN:HB3	1:A:249:LEU:HD11	1.64	0.78
1:B:269:VAL:HG12	1:B:269:VAL:O	1.83	0.76
1:A:245:VAL:O	1:A:249:LEU:HD13	1.87	0.75
1:B:127:LYS:HD3	5:B:703:HOH:O	1.89	0.71
1:A:280:ASN:HD22	1:A:280:ASN:H	1.39	0.70
1:A:162:ARG:NH1	1:A:197:ASN:OD1	2.25	0.69
1:B:220:VAL:HG12	1:B:240[A]:VAL:HG21	1.74	0.68
1:B:324:HIS:NE2	3:B:602:SO4:O1	2.25	0.66
1:A:280:ASN:N	1:A:280:ASN:ND2	2.41	0.65
1:B:214:ASN:HD22	1:B:216:LEU:HB2	1.65	0.62
1:B:257:LYS:NZ	1:B:292:ASP:OD2	2.32	0.62
1:B:211:LEU:HD21	1:B:303:ILE:HG22	1.83	0.60
1:A:106:ARG:HD3	1:A:393:VAL:HG21	1.83	0.60
1:A:253:VAL:HA	1:A:256:ILE:HD12	1.85	0.58
1:B:397:PRO:HB2	1:B:400:VAL:HB	1.86	0.57
1:A:118:ILE:HD11	1:A:130:ARG:HD2	1.87	0.57
1:B:212:ARG:NH2	5:B:707:HOH:O	2.35	0.57
1:A:179:TYR:CZ	1:A:455:ALA:HB2	2.41	0.56
1:A:257:LYS:NZ	1:A:292:ASP:OD2	2.38	0.56
1:B:260:ARG:HH11	1:B:273:GLN:HG2	1.71	0.55
1:B:109:GLY:H	1:B:110:PRO:HD2	1.72	0.54
1:A:109:GLY:H	1:A:110:PRO:HD2	1.73	0.54
1:B:458[A]:ARG:NH2	1:B:461:GLN:OE1	2.35	0.54
1:A:126:TRP:CZ2	1:A:440:ARG:HD2	2.42	0.54
1:A:58:TRP:CZ2	1:A:477:LEU:HB2	2.42	0.54
1:B:176:PHE:CE2	1:B:318:ILE:HG13	2.42	0.54
1:B:269:VAL:O	1:B:269:VAL:CG1	2.52	0.54
1:A:250:THR:HG22	1:A:296:MET:HG3	1.89	0.54
1:B:260:ARG:NH1	1:B:273:GLN:HG2	2.23	0.54
1:B:162:ARG:NH1	1:B:197:ASN:OD1	2.41	0.54
1:B:110:PRO:HG2	1:B:240[B]:VAL:HG13	1.90	0.53
1:B:105[B]:ARG:NH2	2:B:601:HEM:O2D	2.34	0.53
1:B:62[B]:MET:HG2	1:B:400:VAL:HG22	1.89	0.53
1:A:108:PHE:H	1:A:109:GLY:HA2	1.73	0.53
1:B:108:PHE:H	1:B:109:GLY:HA2	1.73	0.53

Continued on next page...

Continued from previous page...

Atom-1	Atom-2	Interatomic distance (Å)	Clash overlap (Å)
1:A:308:GLU:HG2	1:A:482:LEU:HD12	1.90	0.53
1:B:470:GLU:N	1:B:470:GLU:OE1	2.42	0.52
1:A:216:LEU:HD23	1:A:221:LEU:HD21	1.92	0.52
1:B:458[B]:ARG:NH1	5:B:711:HOH:O	2.41	0.52
1:A:108:PHE:N	1:A:109:GLY:HA2	2.25	0.51
1:B:108:PHE:N	1:B:109:GLY:HA2	2.25	0.51
2:B:601:HEM:HBB2	2:B:601:HEM:HMB2	1.94	0.50
1:A:189:PHE:CZ	1:A:249:LEU:HD23	2.47	0.49
1:B:380:ASP:O	1:B:381:VAL:HG13	2.12	0.49
1:A:205:GLU:O	1:A:209:LYS:HG3	2.13	0.49
1:B:442:CYS:HB2	2:B:601:HEM:NA	2.27	0.49
1:A:62[B]:MET:HG2	1:A:400:VAL:HG22	1.95	0.48
1:B:285:GLU:HG2	1:B:286:THR:N	2.14	0.48
1:A:350:VAL:HG21	1:A:454:LEU:HD23	1.96	0.48
1:B:182:ASP:OD2	1:B:195[A]:SER:OG	2.20	0.48
1:A:408:TRP:HB2	1:A:411:PRO:HB3	1.95	0.48
1:B:137:PHE:O	1:B:446:ARG:NH2	2.30	0.47
1:B:230:THR:O	1:B:234:GLU:HG3	2.14	0.47
1:A:277:ASP:O	1:A:280:ASN:ND2	2.48	0.46
1:B:58[B]:TRP:CZ2	1:B:477:LEU:HB2	2.51	0.46
1:B:471:THR:HG22	1:B:473:ILE:HG13	1.98	0.46
1:B:250:THR:HG22	1:B:296:MET:HG3	1.96	0.46
4:A:603:DTV:S1	5:A:751:HOH:O	2.61	0.46
1:B:254:LYS:HA	1:B:254:LYS:HD2	1.80	0.45
1:B:380:ASP:O	1:B:381:VAL:CG1	2.65	0.45
1:B:50:ALA:HA	1:B:53:PHE:CE2	2.52	0.45
1:B:343:ALA:HB2	5:B:709:HOH:O	2.16	0.45
1:B:106:ARG:HD3	1:B:393:VAL:HG21	2.00	0.44
1:A:331:VAL:O	1:A:335:ILE:HG13	2.16	0.44
1:A:56:GLY:HA3	1:A:58:TRP:CZ3	2.53	0.44
1:A:176:PHE:CE2	1:A:318:ILE:HG13	2.53	0.44
1:B:278:SER:C	1:B:280:ASN:H	2.21	0.44
1:B:275:MET:O	1:B:278:SER:OG	2.33	0.44
1:A:126:TRP:CE2	1:A:440:ARG:HD2	2.52	0.44
1:B:118:ILE:HD11	1:B:130:ARG:HD2	1.99	0.44
1:A:257:LYS:HG2	1:A:276:ILE:HD11	1.99	0.43
1:B:186:SER:HA	1:B:191:VAL:O	2.18	0.43
1:B:442:CYS:HB2	2:B:601:HEM:C1A	2.53	0.43
1:A:279:GLN:HA	1:A:289:ALA:HB1	2.00	0.43
1:A:133:LEU:HD23	1:A:133:LEU:HA	1.87	0.43
1:B:58[A]:TRP:CZ2	1:B:477:LEU:HB2	2.53	0.43

Continued on next page...

Continued from previous page...

Atom-1	Atom-2	Interatomic distance (Å)	Clash overlap (Å)
1:B:294:GLU:O	1:B:298:GLN:HG2	2.18	0.43
1:A:217:ASP:OD1	1:A:217:ASP:N	2.52	0.43
1:B:28:ARG:HD3	1:B:28:ARG:HA	1.83	0.43
1:A:448:ALA:O	1:A:452:MET:HG3	2.19	0.42
1:B:196:LEU:HA	1:B:196:LEU:HD23	1.80	0.42
1:B:472:GLN:NE2	1:B:486:GLU:OE2	2.49	0.42
1:A:186:SER:HA	1:A:191:VAL:O	2.18	0.42
1:B:191:VAL:HG13	1:B:256:ILE:HD13	2.01	0.42
1:B:458[A]:ARG:HD3	1:B:458[A]:ARG:HA	1.80	0.42
1:A:330:LYS:HD3	1:A:355:TYR:CZ	2.55	0.42
1:B:105[B]:ARG:HH21	2:B:601:HEM:CGD	2.28	0.42
1:A:196:LEU:HD23	1:A:196:LEU:HA	1.81	0.42
1:B:244:GLU:HG3	1:B:245:VAL:HG23	2.02	0.42
1:B:125:GLU:N	1:B:125:GLU:OE1	2.53	0.42
1:B:288:LYS:HG2	1:B:289:ALA:N	2.35	0.42
1:A:145:MET:HG3	1:A:269:VAL:O	2.19	0.42
1:A:211:LEU:HD21	1:A:303:ILE:HG22	2.01	0.42
1:B:56:GLY:HA2	1:B:479:PHE:HD1	1.85	0.42
1:B:101:VAL:HG21	1:B:381:VAL:HG11	2.01	0.42
1:B:116:ASN:O	1:B:129:ILE:HD13	2.20	0.42
1:A:101:VAL:HG21	1:A:381:VAL:HG11	2.01	0.41
2:A:601:HEM:HMC2	2:A:601:HEM:HBC2	2.02	0.41
1:A:214:ASN:HD22	1:A:216:LEU:HB2	1.85	0.41
1:B:128:ARG:NH2	1:B:289:ALA:O	2.54	0.41
1:B:345:PRO:HD2	1:B:458[B]:ARG:NH1	2.36	0.41
1:A:260:ARG:HD3	1:A:273:GLN:OE1	2.20	0.41
1:B:261:LEU:HD12	1:B:261:LEU:HA	1.80	0.41
1:B:471:THR:OG1	1:B:491:LEU:HD23	2.21	0.41
1:A:105:ARG:HH21	2:A:601:HEM:CGD	2.33	0.40
1:B:206:ASN:O	1:B:245:VAL:HG11	2.22	0.40
1:B:477:LEU:HD13	1:B:483:LEU:HD11	2.03	0.40
1:B:196:LEU:O	1:B:199:PRO:HD3	2.21	0.40

There are no symmetry-related clashes.

5.3 Torsion angles [i](#)

5.3.1 Protein backbone [i](#)

In the following table, the Percentiles column shows the percent Ramachandran outliers of the chain as a percentile score with respect to all X-ray entries followed by that with respect to entries

of similar resolution.

The Analysed column shows the number of residues for which the backbone conformation was analysed, and the total number of residues.

Mol	Chain	Analysed	Favoured	Allowed	Outliers	Percentiles	
1	A	461/519 (89%)	443 (96%)	17 (4%)	1 (0%)	47	46
1	B	469/519 (90%)	448 (96%)	20 (4%)	1 (0%)	47	46
All	All	930/1038 (90%)	891 (96%)	37 (4%)	2 (0%)	47	46

All (2) Ramachandran outliers are listed below:

Mol	Chain	Res	Type
1	A	109	GLY
1	B	109	GLY

5.3.2 Protein sidechains [i](#)

In the following table, the Percentiles column shows the percent sidechain outliers of the chain as a percentile score with respect to all X-ray entries followed by that with respect to entries of similar resolution.

The Analysed column shows the number of residues for which the sidechain conformation was analysed, and the total number of residues.

Mol	Chain	Analysed	Rotameric	Outliers	Percentiles	
1	A	422/472 (89%)	416 (99%)	6 (1%)	67	72
1	B	430/472 (91%)	422 (98%)	8 (2%)	57	61
All	All	852/944 (90%)	838 (98%)	14 (2%)	60	67

All (14) residues with a non-rotameric sidechain are listed below:

Mol	Chain	Res	Type
1	A	34	LYS
1	A	200	GLN
1	A	226	PHE
1	A	280	ASN
1	A	458	ARG
1	A	459	VAL
1	B	134	SER
1	B	219	PHE
1	B	226	PHE
1	B	261	LEU

Continued on next page...

Continued from previous page...

Mol	Chain	Res	Type
1	B	268	ARG
1	B	372	ARG
1	B	437	SER
1	B	440	ARG

Sometimes sidechains can be flipped to improve hydrogen bonding and reduce clashes. All (4) such sidechains are listed below:

Mol	Chain	Res	Type
1	A	280	ASN
1	B	214	ASN
1	B	423	ASN
1	B	426	ASN

5.3.3 RNA [i](#)

There are no RNA molecules in this entry.

5.4 Non-standard residues in protein, DNA, RNA chains [i](#)

There are no non-standard protein/DNA/RNA residues in this entry.

5.5 Carbohydrates [i](#)

There are no monosaccharides in this entry.

5.6 Ligand geometry [i](#)

7 ligands are modelled in this entry.

In the following table, the Counts columns list the number of bonds (or angles) for which Mogul statistics could be retrieved, the number of bonds (or angles) that are observed in the model and the number of bonds (or angles) that are defined in the Chemical Component Dictionary. The Link column lists molecule types, if any, to which the group is linked. The Z score for a bond length (or angle) is the number of standard deviations the observed value is removed from the expected value. A bond length (or angle) with $|Z| > 2$ is considered an outlier worth inspection. RMSZ is the root-mean-square of all Z scores of the bond lengths (or angles).

Mol	Type	Chain	Res	Link	Bond lengths			Bond angles		
					Counts	RMSZ	$\# Z > 2$	Counts	RMSZ	$\# Z > 2$
4	DTV	A	603	-	7,7,7	1.81	2 (28%)	4,8,8	1.84	1 (25%)

Mol	Type	Chain	Res	Link	Bond lengths			Bond angles		
					Counts	RMSZ	# Z > 2	Counts	RMSZ	# Z > 2
3	SO4	A	604	-	4,4,4	0.16	0	6,6,6	0.32	0
4	DTV	B	603	-	7,7,7	1.33	1 (14%)	4,8,8	2.59	3 (75%)
3	SO4	B	602	-	4,4,4	0.14	0	6,6,6	0.14	0
3	SO4	A	602	-	4,4,4	0.14	0	6,6,6	0.06	0
2	HEM	B	601	1,5	41,50,50	1.48	4 (9%)	45,82,82	1.50	9 (20%)
2	HEM	A	601	1,5	41,50,50	1.52	5 (12%)	45,82,82	1.37	9 (20%)

In the following table, the Chirals column lists the number of chiral outliers, the number of chiral centers analysed, the number of these observed in the model and the number defined in the Chemical Component Dictionary. Similar counts are reported in the Torsion and Rings columns. '-' means no outliers of that kind were identified.

Mol	Type	Chain	Res	Link	Chirals	Torsions	Rings
4	DTV	B	603	-	-	5/8/8/8	-
2	HEM	B	601	1,5	-	2/12/54/54	-
4	DTV	A	603	-	-	8/8/8/8	-
2	HEM	A	601	1,5	-	4/12/54/54	-

All (12) bond length outliers are listed below:

Mol	Chain	Res	Type	Atoms	Z	Observed(Å)	Ideal(Å)
2	A	601	HEM	C3C-CAC	3.85	1.55	1.47
2	B	601	HEM	C3C-C2C	-3.82	1.35	1.40
2	B	601	HEM	C3C-CAC	3.78	1.55	1.47
2	A	601	HEM	C3C-C2C	-3.61	1.35	1.40
2	A	601	HEM	CAB-C3B	3.18	1.56	1.47
4	A	603	DTV	C3-C2	3.10	1.60	1.52
2	B	601	HEM	CAB-C3B	3.09	1.55	1.47
2	B	601	HEM	CAA-C2A	2.67	1.56	1.52
2	A	601	HEM	CAA-C2A	2.66	1.56	1.52
4	A	603	DTV	O2-C2	-2.45	1.38	1.43
4	B	603	DTV	O2-C2	-2.41	1.38	1.43
2	A	601	HEM	CMB-C2B	2.29	1.55	1.50

All (22) bond angle outliers are listed below:

Mol	Chain	Res	Type	Atoms	Z	Observed(°)	Ideal(°)
4	B	603	DTV	O3-C3-C2	-3.77	101.99	109.72
2	B	601	HEM	CMA-C3A-C4A	-3.14	123.64	128.46
2	B	601	HEM	C4B-CHC-C1C	2.86	126.34	122.56

Continued on next page...

Continued from previous page...

Mol	Chain	Res	Type	Atoms	Z	Observed(°)	Ideal(°)
2	A	601	HEM	C4B-CHC-C1C	2.86	126.33	122.56
2	B	601	HEM	C4D-ND-C1D	2.67	107.83	105.07
2	A	601	HEM	CHC-C4B-NB	2.63	127.29	124.43
4	A	603	DTV	O3-C3-C2	-2.60	104.39	109.72
2	B	601	HEM	CHD-C1D-ND	2.51	127.16	124.43
2	B	601	HEM	C1B-NB-C4B	2.45	107.61	105.07
2	B	601	HEM	CHC-C4B-NB	2.42	127.06	124.43
2	A	601	HEM	CBA-CAA-C2A	-2.36	108.60	112.62
4	B	603	DTV	C2-C1-S1	-2.27	107.88	114.47
2	A	601	HEM	C1B-NB-C4B	2.25	107.39	105.07
2	B	601	HEM	C3B-C2B-C1B	2.21	108.13	106.49
2	A	601	HEM	C3B-C2B-C1B	2.16	108.09	106.49
2	A	601	HEM	CMC-C2C-C3C	2.14	128.68	124.68
2	B	601	HEM	CMC-C2C-C3C	2.12	128.65	124.68
2	A	601	HEM	O1A-CGA-CBA	-2.11	116.31	123.08
2	A	601	HEM	CMA-C3A-C4A	-2.06	125.30	128.46
2	B	601	HEM	CBA-CAA-C2A	-2.05	109.13	112.62
2	A	601	HEM	O2A-CGA-CBA	2.04	120.60	114.03
4	B	603	DTV	C3-C4-S4	-2.03	108.56	114.47

There are no chirality outliers.

All (19) torsion outliers are listed below:

Mol	Chain	Res	Type	Atoms
4	A	603	DTV	S1-C1-C2-O2
4	A	603	DTV	S1-C1-C2-C3
4	A	603	DTV	C1-C2-C3-O3
4	A	603	DTV	C1-C2-C3-C4
4	A	603	DTV	O2-C2-C3-O3
4	A	603	DTV	O2-C2-C3-C4
4	A	603	DTV	C2-C3-C4-S4
4	A	603	DTV	O3-C3-C4-S4
4	B	603	DTV	S1-C1-C2-O2
4	B	603	DTV	S1-C1-C2-C3
4	B	603	DTV	C2-C3-C4-S4
4	B	603	DTV	O3-C3-C4-S4
4	B	603	DTV	C1-C2-C3-C4
2	A	601	HEM	CAD-CBD-CGD-O2D
2	A	601	HEM	CAA-CBA-CGA-O1A
2	B	601	HEM	CAA-CBA-CGA-O2A
2	B	601	HEM	CAA-CBA-CGA-O1A
2	A	601	HEM	CAA-CBA-CGA-O2A

Continued on next page...

Continued from previous page...

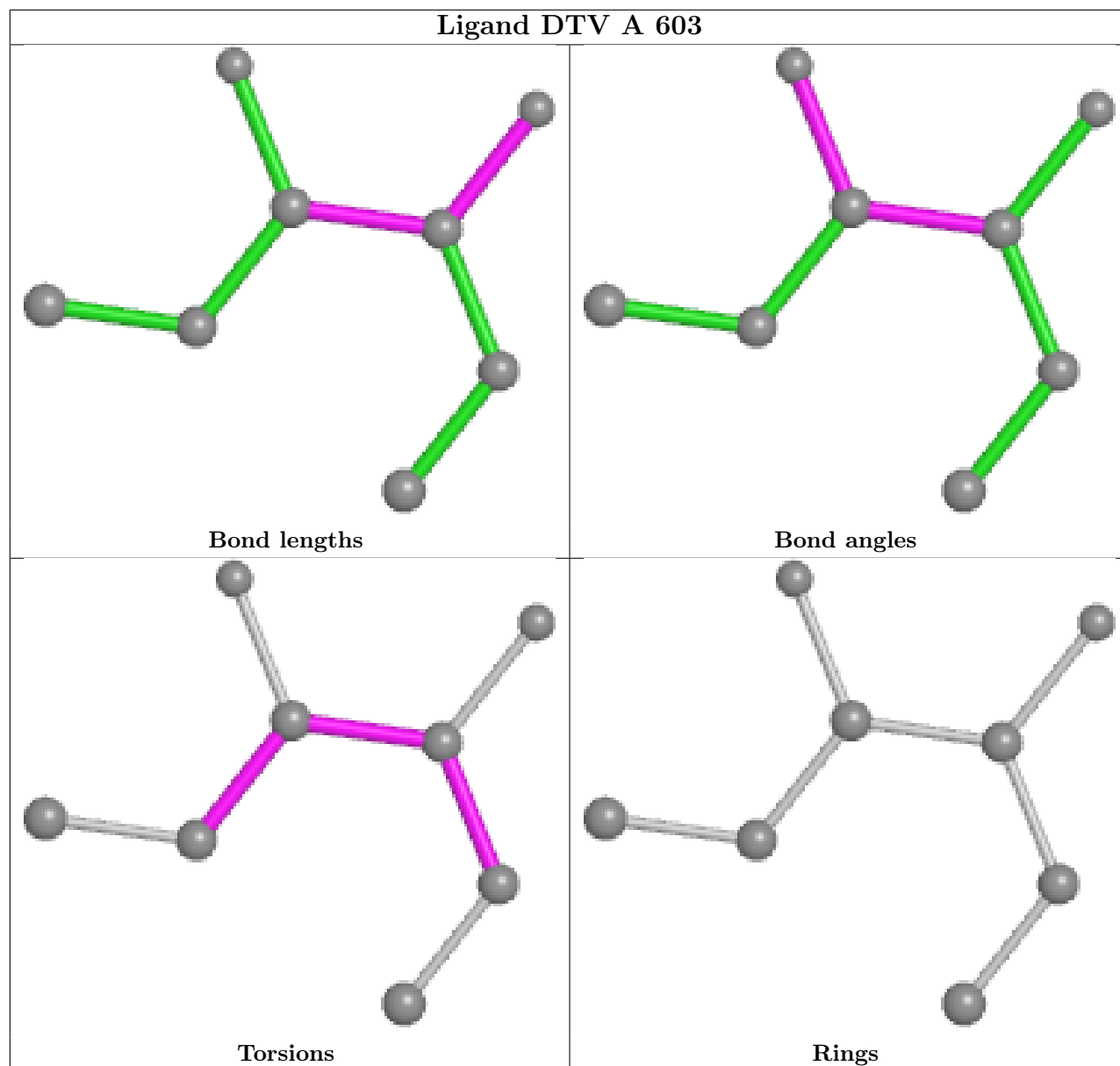
Mol	Chain	Res	Type	Atoms
2	A	601	HEM	CAD-CBD-CGD-O1D

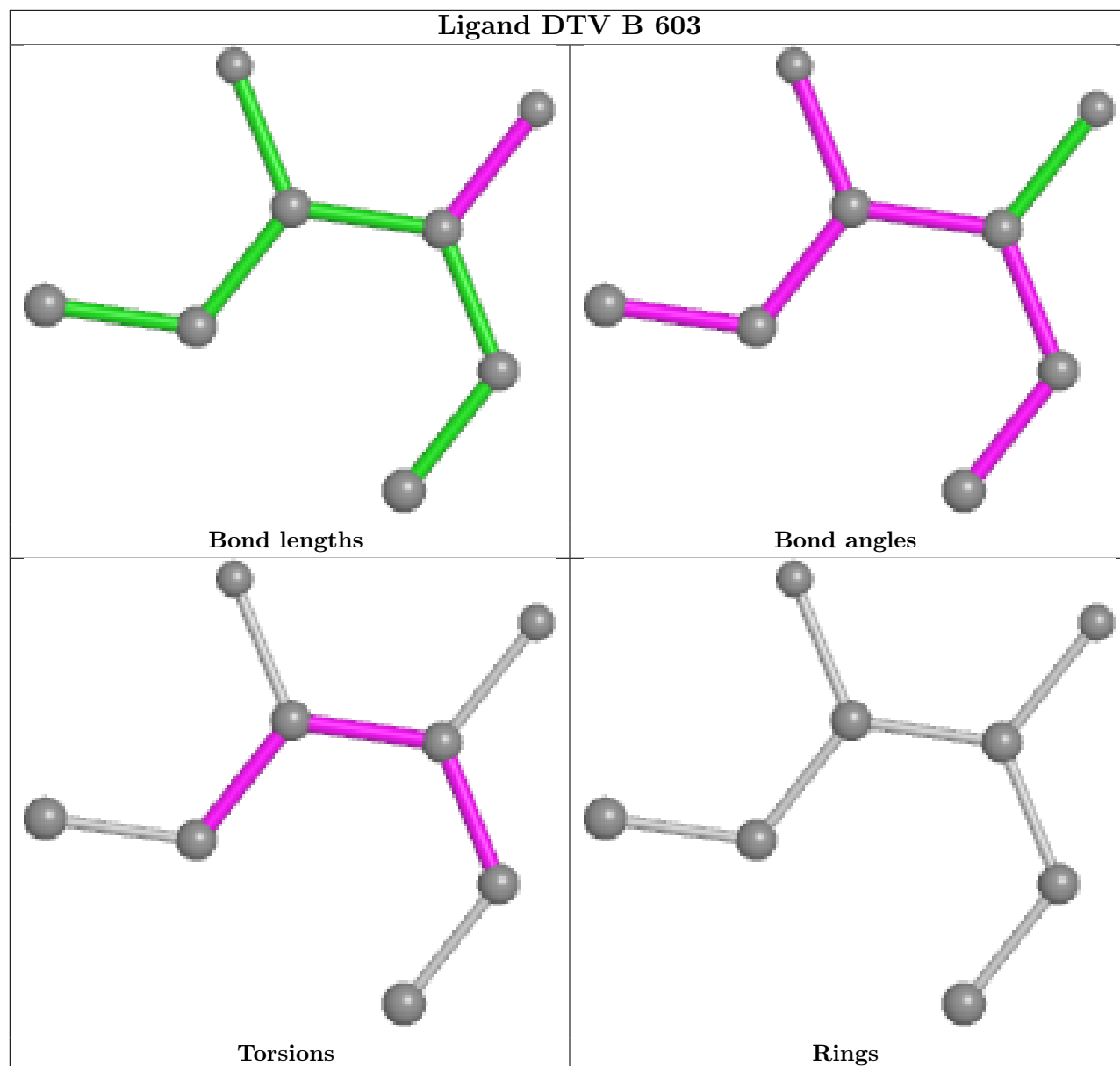
There are no ring outliers.

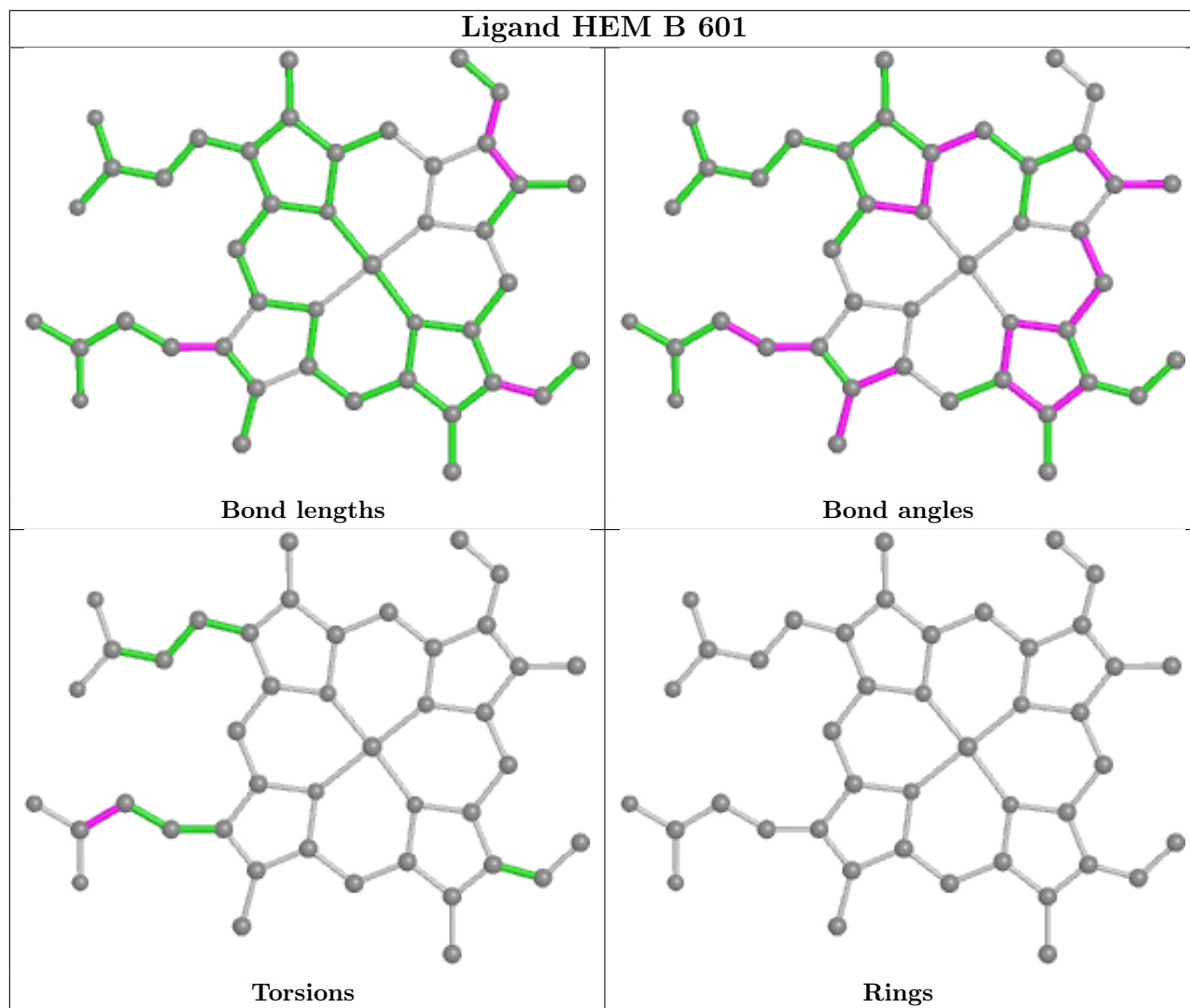
4 monomers are involved in 9 short contacts:

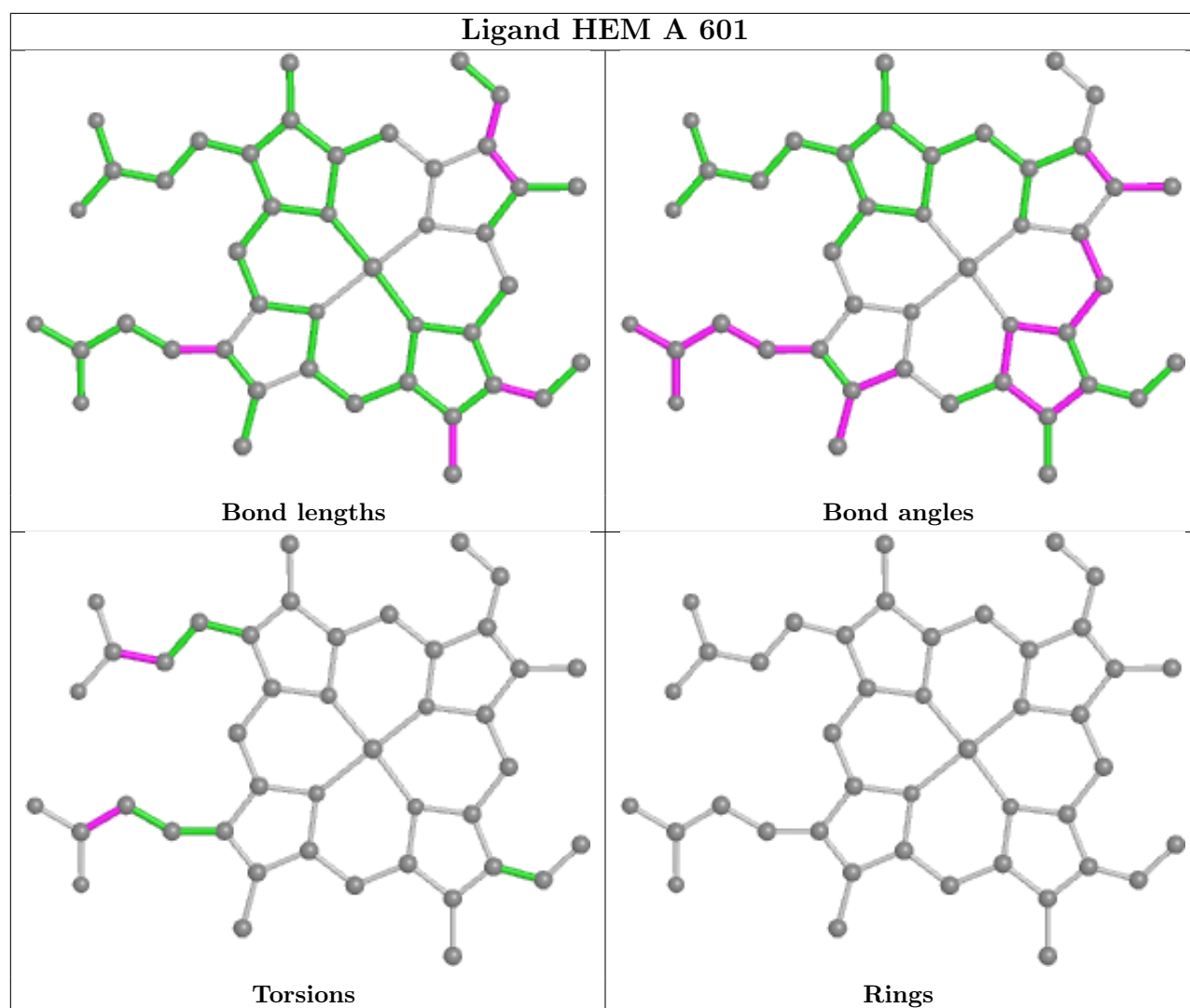
Mol	Chain	Res	Type	Clashes	Symm-Clashes
4	A	603	DTV	1	0
3	B	602	SO4	1	0
2	B	601	HEM	5	0
2	A	601	HEM	2	0

The following is a two-dimensional graphical depiction of Mogul quality analysis of bond lengths, bond angles, torsion angles, and ring geometry for all instances of the Ligand of Interest. In addition, ligands with molecular weight > 250 and outliers as shown on the validation Tables will also be included. For torsion angles, if less than 5% of the Mogul distribution of torsion angles is within 10 degrees of the torsion angle in question, then that torsion angle is considered an outlier. Any bond that is central to one or more torsion angles identified as an outlier by Mogul will be highlighted in the graph. For rings, the root-mean-square deviation (RMSD) between the ring in question and similar rings identified by Mogul is calculated over all ring torsion angles. If the average RMSD is greater than 60 degrees and the minimal RMSD between the ring in question and any Mogul-identified rings is also greater than 60 degrees, then that ring is considered an outlier. The outliers are highlighted in purple. The color gray indicates Mogul did not find sufficient equivalents in the CSD to analyse the geometry.









5.7 Other polymers [i](#)

There are no such residues in this entry.

5.8 Polymer linkage issues [i](#)

There are no chain breaks in this entry.

6 Fit of model and data

6.1 Protein, DNA and RNA chains

In the following table, the column labelled ‘#RSRZ > 2’ contains the number (and percentage) of RSRZ outliers, followed by percent RSRZ outliers for the chain as percentile scores relative to all X-ray entries and entries of similar resolution. The OWAB column contains the minimum, median, 95th percentile and maximum values of the occupancy-weighted average B-factor per residue. The column labelled ‘Q < 0.9’ lists the number of (and percentage) of residues with an average occupancy less than 0.9.

Mol	Chain	Analysed	<RSRZ>	#RSRZ>2	OWAB(Å ²)	Q<0.9
1	A	462/519 (89%)	0.12	16 (3%) 44 52	33, 54, 94, 136	0
1	B	465/519 (89%)	0.09	17 (3%) 41 49	39, 60, 99, 141	0
All	All	927/1038 (89%)	0.11	33 (3%) 42 51	33, 57, 96, 141	0

All (33) RSRZ outliers are listed below:

Mol	Chain	Res	Type	RSRZ
1	B	248	PHE	4.6
1	B	28	ARG	4.6
1	A	261	LEU	4.1
1	B	220	VAL	3.8
1	B	259	GLY	3.7
1	B	261	LEU	3.3
1	B	226	PHE	3.2
1	A	286	THR	3.2
1	B	262	LYS	3.1
1	A	473	ILE	3.0
1	A	248	PHE	2.9
1	A	226	PHE	2.9
1	B	25	TYR	2.9
1	A	273	GLN	2.9
1	B	289	ALA	2.8
1	B	251	LYS	2.8
1	B	203	PHE	2.8
1	A	262	LYS	2.6
1	B	409	THR	2.5
1	B	497	ASP	2.5
1	A	168	LYS	2.5
1	B	286	THR	2.4
1	A	257	LYS	2.4
1	A	305	ALA	2.4

Continued on next page...

Continued from previous page...

Mol	Chain	Res	Type	RSRZ
1	B	215	PRO	2.2
1	A	289	ALA	2.2
1	B	255	GLN	2.1
1	B	458[A]	ARG	2.1
1	A	469	LYS	2.1
1	A	258	GLU	2.1
1	A	167	GLY	2.0
1	A	492	LYS	2.0
1	A	260	ARG	2.0

6.2 Non-standard residues in protein, DNA, RNA chains [i](#)

There are no non-standard protein/DNA/RNA residues in this entry.

6.3 Carbohydrates [i](#)

There are no monosaccharides in this entry.

6.4 Ligands [i](#)

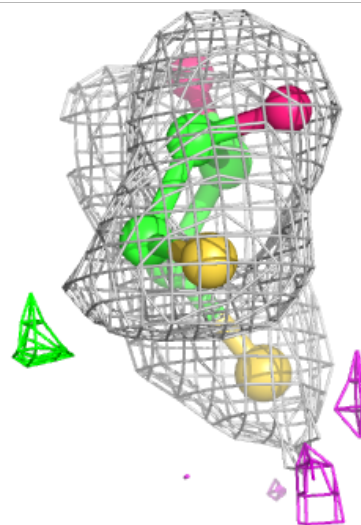
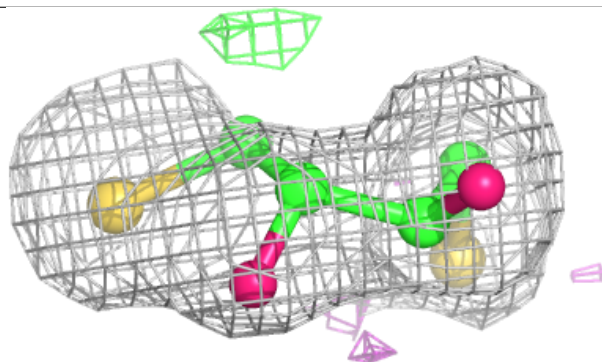
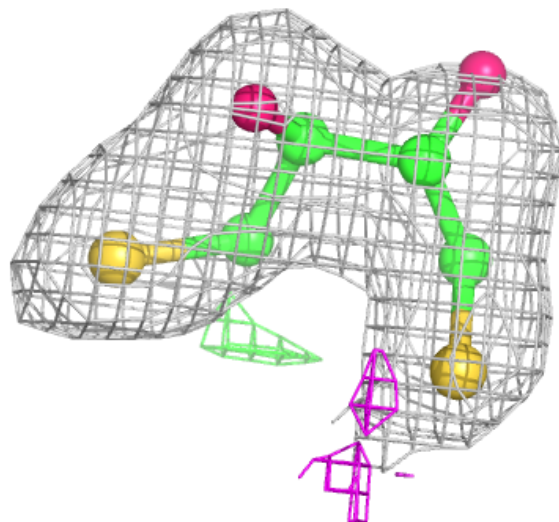
In the following table, the Atoms column lists the number of modelled atoms in the group and the number defined in the chemical component dictionary. The B-factors column lists the minimum, median, 95th percentile and maximum values of B factors of atoms in the group. The column labelled 'Q< 0.9' lists the number of atoms with occupancy less than 0.9.

Mol	Type	Chain	Res	Atoms	RSCC	RSR	B-factors(Å ²)	Q<0.9
4	DTV	A	603	8/8	0.81	0.20	70,85,91,95	0
3	SO4	B	602	5/5	0.82	0.18	129,134,137,143	0
4	DTV	B	603	8/8	0.87	0.14	89,100,103,106	0
3	SO4	A	602	5/5	0.92	0.19	129,130,134,137	0
2	HEM	A	601	43/43	0.98	0.14	28,38,46,50	0
2	HEM	B	601	43/43	0.98	0.15	32,41,48,50	0
3	SO4	A	604	5/5	0.99	0.09	45,58,65,67	0

The following is a graphical depiction of the model fit to experimental electron density of all instances of the Ligand of Interest. In addition, ligands with molecular weight > 250 and outliers as shown on the geometry validation Tables will also be included. Each fit is shown from different orientation to approximate a three-dimensional view.

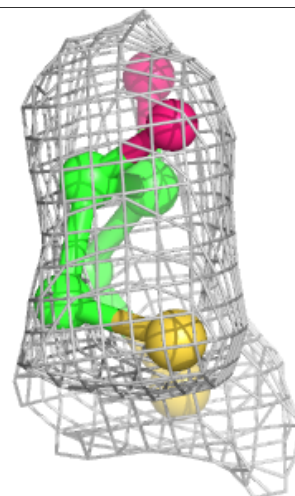
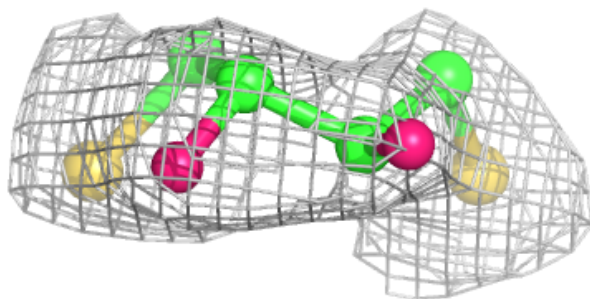
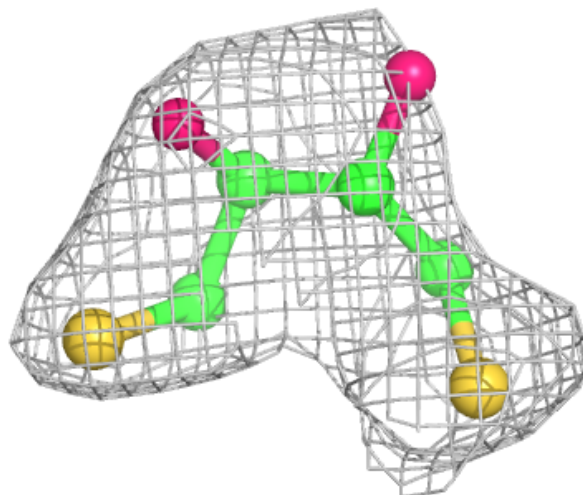
Electron density around DTV A 603:

$2mF_o-DF_c$ (at 0.7 rmsd) in gray
 mF_o-DF_c (at 3 rmsd) in purple (negative)
and green (positive)



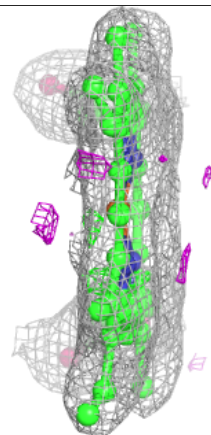
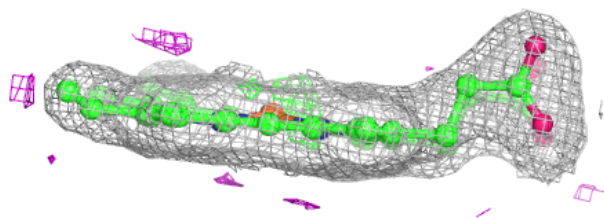
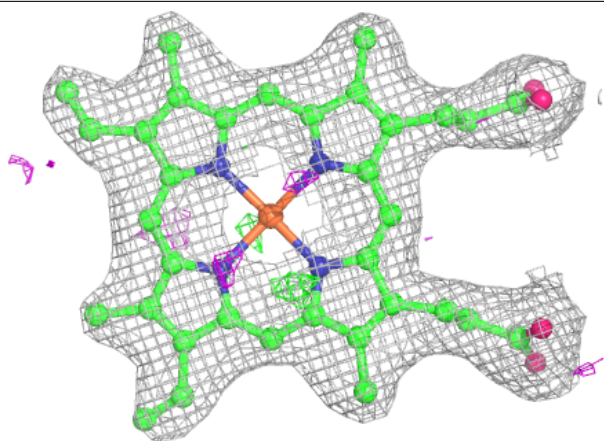
Electron density around DTV B 603:

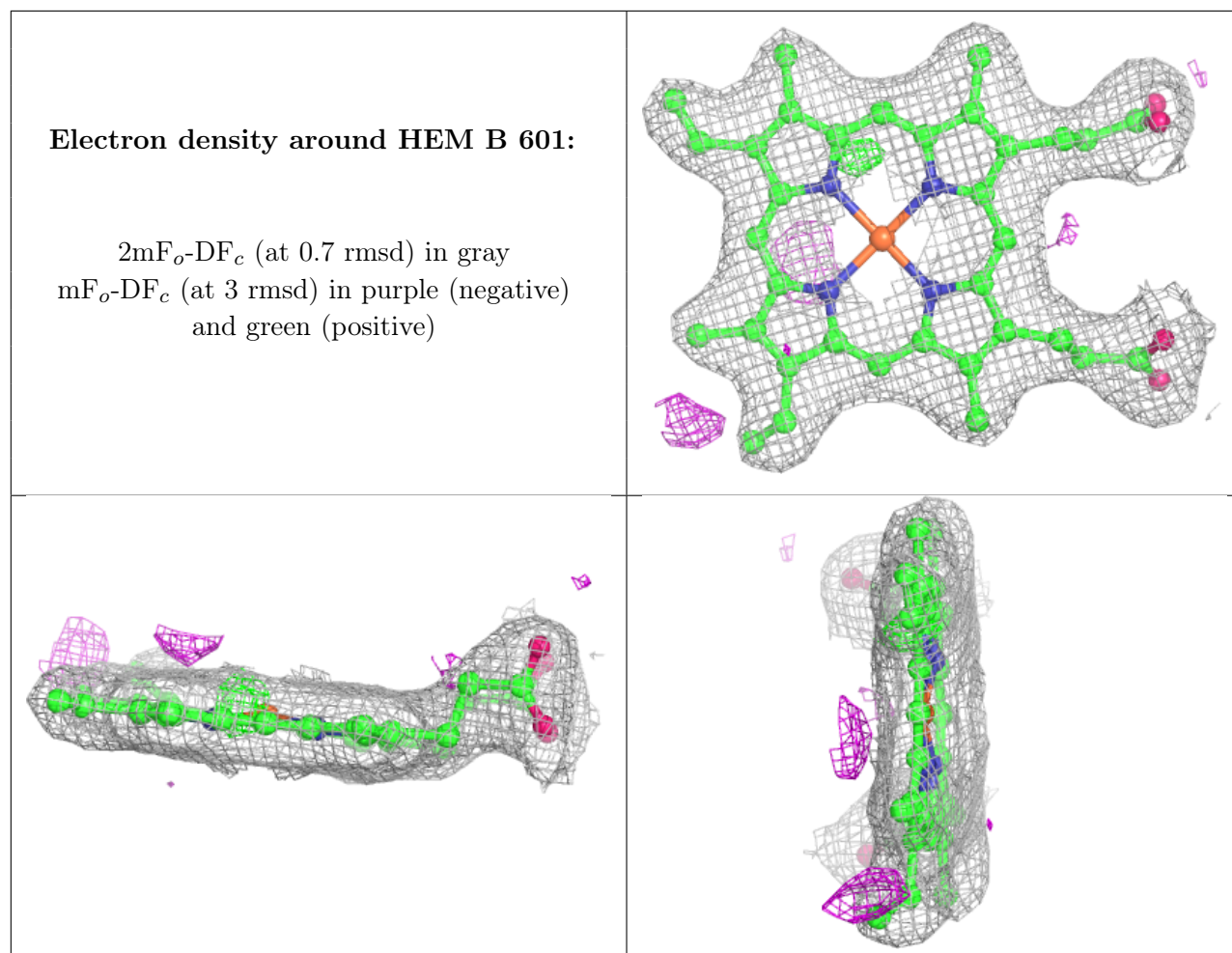
$2mF_o-DF_c$ (at 0.7 rmsd) in gray
 mF_o-DF_c (at 3 rmsd) in purple (negative)
and green (positive)



Electron density around HEM A 601:

$2mF_o-DF_c$ (at 0.7 rmsd) in gray
 mF_o-DF_c (at 3 rmsd) in purple (negative)
and green (positive)





6.5 Other polymers [i](#)

There are no such residues in this entry.