



Full wwPDB X-ray Structure Validation Report ⓘ

Oct 9, 2023 – 11:04 PM EDT

PDB ID : 7M40
Title : Discovery of small molecule antagonists of human Retinoblastoma Binding Protein 4 (RBBP4)
Authors : Perveen, S.; Dong, A.; Tempel, W.; Zepeda-Velazquez, C.; Abbey, M.; McLeod, D.; Marcellus, R.; Mohammed, M.; Ensan, D.; Panagopoulos, D.; Trush, V.; Gibson, E.; Brown, P.J.; Arrowsmith, C.H.; Schapira, M.; Al-awar, R.; Vedadi, M.; Structural Genomics Consortium (SGC)
Deposited on : 2021-03-19
Resolution : 1.88 Å(reported)

This is a Full wwPDB X-ray Structure Validation Report for a publicly released PDB entry.

We welcome your comments at validation@mail.wwpdb.org

A user guide is available at

<https://www.wwpdb.org/validation/2017/XrayValidationReportHelp>

with specific help available everywhere you see the ⓘ symbol.

The types of validation reports are described at

<http://www.wwpdb.org/validation/2017/FAQs#types>.

The following versions of software and data (see [references ⓘ](#)) were used in the production of this report:

MolProbity : 4.02b-467
Mogul : 1.8.5 (274361), CSD as541be (2020)
Xtriage (Phenix) : 1.13
EDS : 2.35.1
buster-report : 1.1.7 (2018)
Percentile statistics : 20191225.v01 (using entries in the PDB archive December 25th 2019)
Refmac : 5.8.0158
CCP4 : 7.0.044 (Gargrove)
Ideal geometry (proteins) : Engh & Huber (2001)

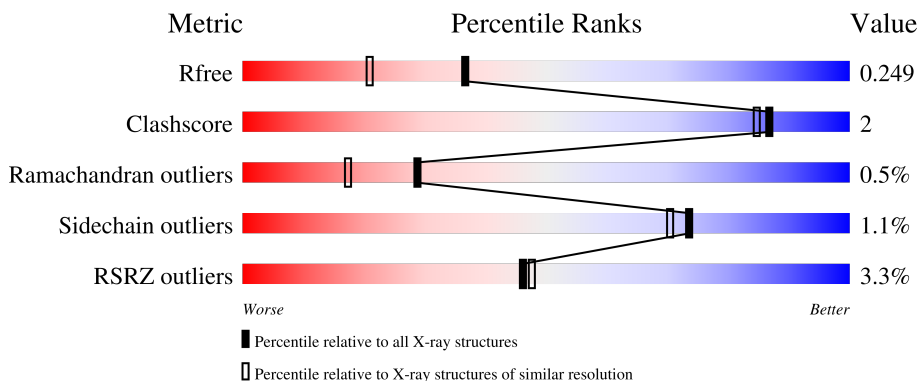
1 Overall quality at a glance

The following experimental techniques were used to determine the structure:

X-RAY DIFFRACTION

The reported resolution of this entry is 1.88 Å.

Percentile scores (ranging between 0-100) for global validation metrics of the entry are shown in the following graphic. The table shows the number of entries on which the scores are based.



Metric	Whole archive (#Entries)	Similar resolution (#Entries, resolution range(Å))
R_{free}	130704	9470 (1.90-1.86)
Clashscore	141614	10282 (1.90-1.86)
Ramachandran outliers	138981	10152 (1.90-1.86)
Sidechain outliers	138945	10152 (1.90-1.86)
RSRZ outliers	127900	9303 (1.90-1.86)

The table below summarises the geometric issues observed across the polymeric chains and their fit to the electron density. The red, orange, yellow and green segments of the lower bar indicate the fraction of residues that contain outliers for ≥ 3 , 2, 1 and 0 types of geometric quality criteria respectively. A grey segment represents the fraction of residues that are not modelled. The numeric value for each fraction is indicated below the corresponding segment, with a dot representing fractions $\leq 5\%$. The upper red bar (where present) indicates the fraction of residues that have poor fit to the electron density. The numeric value is given above the bar.

Mol	Chain	Length	Quality of chain
1	A	443	 5% 84% 6% 9%
1	B	443	 % 81% • 14%

Ideal geometry (DNA, RNA) : Parkinson et al. (1996)
Validation Pipeline (wwPDB-VP) : 2.35.1

2 Entry composition i

There are 3 unique types of molecules in this entry. The entry contains 6444 atoms, of which 0 are hydrogens and 0 are deuteriums.

In the tables below, the ZeroOcc column contains the number of atoms modelled with zero occupancy, the AltConf column contains the number of residues with at least one atom in alternate conformation and the Trace column contains the number of residues modelled with at most 2 atoms.

- Molecule 1 is a protein called Histone-binding protein RBBP4.

Mol	Chain	Residues	Atoms					ZeroOcc	AltConf	Trace
			Total	C	N	O	S			
1	A	401	3099	1968	525	596	10	0	1	0
1	B	379	2963	1882	501	570	10	0	2	0

There are 36 discrepancies between the modelled and reference sequences:

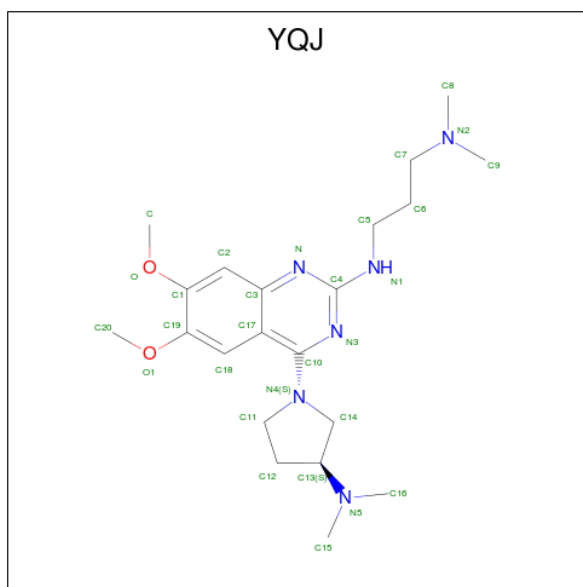
Chain	Residue	Modelled	Actual	Comment	Reference
A	-17	MET	-	initiating methionine	UNP Q09028
A	-16	HIS	-	expression tag	UNP Q09028
A	-15	HIS	-	expression tag	UNP Q09028
A	-14	HIS	-	expression tag	UNP Q09028
A	-13	HIS	-	expression tag	UNP Q09028
A	-12	HIS	-	expression tag	UNP Q09028
A	-11	HIS	-	expression tag	UNP Q09028
A	-10	SER	-	expression tag	UNP Q09028
A	-9	SER	-	expression tag	UNP Q09028
A	-8	GLY	-	expression tag	UNP Q09028
A	-7	ARG	-	expression tag	UNP Q09028
A	-6	GLU	-	expression tag	UNP Q09028
A	-5	ASN	-	expression tag	UNP Q09028
A	-4	LEU	-	expression tag	UNP Q09028
A	-3	TYR	-	expression tag	UNP Q09028
A	-2	PHE	-	expression tag	UNP Q09028
A	-1	GLN	-	expression tag	UNP Q09028
A	0	GLY	-	expression tag	UNP Q09028
B	-17	MET	-	initiating methionine	UNP Q09028
B	-16	HIS	-	expression tag	UNP Q09028
B	-15	HIS	-	expression tag	UNP Q09028
B	-14	HIS	-	expression tag	UNP Q09028
B	-13	HIS	-	expression tag	UNP Q09028
B	-12	HIS	-	expression tag	UNP Q09028
B	-11	HIS	-	expression tag	UNP Q09028

Continued on next page...

Continued from previous page...

Chain	Residue	Modelled	Actual	Comment	Reference
B	-10	SER	-	expression tag	UNP Q09028
B	-9	SER	-	expression tag	UNP Q09028
B	-8	GLY	-	expression tag	UNP Q09028
B	-7	ARG	-	expression tag	UNP Q09028
B	-6	GLU	-	expression tag	UNP Q09028
B	-5	ASN	-	expression tag	UNP Q09028
B	-4	LEU	-	expression tag	UNP Q09028
B	-3	TYR	-	expression tag	UNP Q09028
B	-2	PHE	-	expression tag	UNP Q09028
B	-1	GLN	-	expression tag	UNP Q09028
B	0	GLY	-	expression tag	UNP Q09028

- Molecule 2 is N 3 -{4-[3-(dimethylamino)pyrrolidin-1-yl]-6,7-dimethoxyquinazolin-2-yl}-N 1 ,N 1 -dimethylpropane-1,3-diamine (three-letter code: YQJ) (formula: C₂₁H₃₄N₆O₂) (labeled as "Ligand of Interest" by depositor).



Mol	Chain	Residues	Atoms				ZeroOcc	AltConf
			Total	C	N	O		
2	A	1	Total	C	N	O	0	0
			22	15	5	2		
2	B	1	Total	C	N	O	0	0
			23	16	5	2		

- Molecule 3 is water.

Mol	Chain	Residues	Atoms		ZeroOcc	AltConf
			Total	O		
3	A	174	Total	O	0	2
			176	176		

Continued on next page...

Continued from previous page...

Mol	Chain	Residues	Atoms		ZeroOcc	AltConf
3	B	160	Total 161	O 161	0	1

4 Data and refinement statistics

Property	Value	Source
Space group	P 1 21 1	Depositor
Cell constants a, b, c, α , β , γ	75.82Å 59.86Å 102.01Å 90.00° 93.73° 90.00°	Depositor
Resolution (Å)	46.99 – 1.88 46.94 – 1.87	Depositor EDS
% Data completeness (in resolution range)	98.1 (46.99-1.88) 97.6 (46.94-1.87)	Depositor EDS
R_{merge}	0.07	Depositor
R_{sym}	(Not available)	Depositor
$\langle I/\sigma(I) \rangle$ ¹	1.65 (at 1.87Å)	Xtrriage
Refinement program	REFMAC 5.8.0258	Depositor
R, R_{free}	0.184 , 0.236 0.192 , 0.249	Depositor DCC
R_{free} test set	704 reflections (0.95%)	wwPDB-VP
Wilson B-factor (Å ²)	30.4	Xtrriage
Anisotropy	0.797	Xtrriage
Bulk solvent k_{sol} (e/Å ³), B_{sol} (Å ²)	0.32 , 41.6	EDS
L-test for twinning ²	$\langle L \rangle = 0.50$, $\langle L^2 \rangle = 0.33$	Xtrriage
Estimated twinning fraction	No twinning to report.	Xtrriage
F_o, F_c correlation	0.96	EDS
Total number of atoms	6444	wwPDB-VP
Average B, all atoms (Å ²)	43.0	wwPDB-VP

Xtrriage's analysis on translational NCS is as follows: *The largest off-origin peak in the Patterson function is 8.07% of the height of the origin peak. No significant pseudotranslation is detected.*

¹Intensities estimated from amplitudes.

²Theoretical values of $\langle |L| \rangle$, $\langle L^2 \rangle$ for acentric reflections are 0.5, 0.333 respectively for untwinned datasets, and 0.375, 0.2 for perfectly twinned datasets.

5 Model quality [i](#)

5.1 Standard geometry [i](#)

Bond lengths and bond angles in the following residue types are not validated in this section: YQJ

The Z score for a bond length (or angle) is the number of standard deviations the observed value is removed from the expected value. A bond length (or angle) with $|Z| > 5$ is considered an outlier worth inspection. RMSZ is the root-mean-square of all Z scores of the bond lengths (or angles).

Mol	Chain	Bond lengths		Bond angles	
		RMSZ	# Z >5	RMSZ	# Z >5
1	A	0.76	0/3187	0.77	0/4360
1	B	0.71	0/3045	0.77	0/4165
All	All	0.74	0/6232	0.77	0/8525

There are no bond length outliers.

There are no bond angle outliers.

There are no chirality outliers.

There are no planarity outliers.

5.2 Too-close contacts [i](#)

In the following table, the Non-H and H(model) columns list the number of non-hydrogen atoms and hydrogen atoms in the chain respectively. The H(added) column lists the number of hydrogen atoms added and optimized by MolProbity. The Clashes column lists the number of clashes within the asymmetric unit, whereas Symm-Clashes lists symmetry-related clashes.

Mol	Chain	Non-H	H(model)	H(added)	Clashes	Symm-Clashes
1	A	3099	0	2840	14	0
1	B	2963	0	2751	11	0
2	A	22	0	0	0	0
2	B	23	0	0	0	0
3	A	176	0	0	0	0
3	B	161	0	0	1	0
All	All	6444	0	5591	25	0

The all-atom clashscore is defined as the number of clashes found per 1000 atoms (including hydrogen atoms). The all-atom clashscore for this structure is 2.

All (25) close contacts within the same asymmetric unit are listed below, sorted by their clash

magnitude.

Atom-1	Atom-2	Interatomic distance (Å)	Clash overlap (Å)
1:A:124:GLU:OE2	1:A:172:ARG:NH2	2.30	0.65
1:A:356:PRO:HA	1:A:359:ALA:HB3	1.78	0.64
1:A:28:THR:OG1	1:A:29:PRO:HD3	2.01	0.61
1:A:119:ILE:HG23	1:A:159:SER:HA	1.87	0.57
1:B:278:CYS:SG	1:B:323[B]:VAL:HG12	2.47	0.55
1:B:42:TRP:CZ2	1:B:75:GLU:HG3	2.45	0.52
1:A:133:MET:CE	1:A:136:ASN:HB3	2.41	0.50
1:A:58:GLY:O	1:A:59:LYS:CG	2.61	0.49
1:A:176:HIS:CE1	1:A:197:SER:HB2	2.48	0.48
1:B:43:PRO:HA	1:B:397:ASN:HA	1.95	0.48
1:A:173:LEU:HB3	1:A:205:TRP:CE2	2.50	0.46
1:A:133:MET:HE2	1:A:136:ASN:HB3	1.98	0.46
1:B:42:TRP:CH2	1:B:75:GLU:HG3	2.51	0.45
1:A:231:GLU:OE2	1:A:248:ASP:OD1	2.35	0.45
1:B:28:THR:N	1:B:29:PRO:CD	2.80	0.45
1:B:257:THR:O	3:B:1101:HOH:O	2.21	0.43
1:B:36:MET:HE2	1:B:115:ILE:HD11	2.00	0.43
1:A:43:PRO:HA	1:A:397:ASN:HA	2.01	0.43
1:A:48:GLN:OE1	1:A:131:ARG:HA	2.18	0.42
1:B:406:GLU:HA	1:B:409:TYR:CZ	2.55	0.42
1:A:138:CYS:HA	1:A:154:TYR:CE2	2.54	0.41
1:A:355:SER:O	1:A:358:ASP:N	2.53	0.41
1:B:397:ASN:C	1:B:397:ASN:OD1	2.60	0.40
1:B:28:THR:OG1	1:B:29:PRO:HD3	2.21	0.40
1:B:269:VAL:HG21	1:B:306:LEU:O	2.22	0.40

There are no symmetry-related clashes.

5.3 Torsion angles [i](#)

5.3.1 Protein backbone [i](#)

In the following table, the Percentiles column shows the percent Ramachandran outliers of the chain as a percentile score with respect to all X-ray entries followed by that with respect to entries of similar resolution.

The Analysed column shows the number of residues for which the backbone conformation was analysed, and the total number of residues.

Mol	Chain	Analysed	Favoured	Allowed	Outliers	Percentiles	
1	A	396/443 (89%)	381 (96%)	13 (3%)	2 (0%)	29	17
1	B	375/443 (85%)	362 (96%)	11 (3%)	2 (0%)	29	17
All	All	771/886 (87%)	743 (96%)	24 (3%)	4 (0%)	29	17

All (4) Ramachandran outliers are listed below:

Mol	Chain	Res	Type
1	B	315	SER
1	A	315	SER
1	A	397	ASN
1	B	397	ASN

5.3.2 Protein sidechains [i](#)

In the following table, the Percentiles column shows the percent sidechain outliers of the chain as a percentile score with respect to all X-ray entries followed by that with respect to entries of similar resolution.

The Analysed column shows the number of residues for which the sidechain conformation was analysed, and the total number of residues.

Mol	Chain	Analysed	Rotameric	Outliers	Percentiles	
1	A	325/391 (83%)	321 (99%)	4 (1%)	71	67
1	B	316/391 (81%)	313 (99%)	3 (1%)	78	76
All	All	641/782 (82%)	634 (99%)	7 (1%)	73	70

All (7) residues with a non-rotameric sidechain are listed below:

Mol	Chain	Res	Type
1	A	174	ARG
1	A	289	LEU
1	A	315	SER
1	A	354	GLN
1	B	144	THR
1	B	266	SER
1	B	354	GLN

Sometimes sidechains can be flipped to improve hydrogen bonding and reduce clashes. All (1) such sidechains are listed below:

Mol	Chain	Res	Type
1	A	250	GLN

5.3.3 RNA [i](#)

There are no RNA molecules in this entry.

5.4 Non-standard residues in protein, DNA, RNA chains [i](#)

There are no non-standard protein/DNA/RNA residues in this entry.

5.5 Carbohydrates [i](#)

There are no monosaccharides in this entry.

5.6 Ligand geometry [i](#)

2 ligands are modelled in this entry.

In the following table, the Counts columns list the number of bonds (or angles) for which Mogul statistics could be retrieved, the number of bonds (or angles) that are observed in the model and the number of bonds (or angles) that are defined in the Chemical Component Dictionary. The Link column lists molecule types, if any, to which the group is linked. The Z score for a bond length (or angle) is the number of standard deviations the observed value is removed from the expected value. A bond length (or angle) with $|Z| > 2$ is considered an outlier worth inspection. RMSZ is the root-mean-square of all Z scores of the bond lengths (or angles).

Mol	Type	Chain	Res	Link	Bond lengths			Bond angles		
					Counts	RMSZ	# $ Z > 2$	Counts	RMSZ	# $ Z > 2$
2	YQJ	B	1000	-	24,24,31	0.88	1 (4%)	32,32,43	0.70	1 (3%)
2	YQJ	A	1000	-	23,23,31	0.61	0	30,31,43	0.38	0

In the following table, the Chirals column lists the number of chiral outliers, the number of chiral centers analysed, the number of these observed in the model and the number defined in the Chemical Component Dictionary. Similar counts are reported in the Torsion and Rings columns. '-' means no outliers of that kind were identified.

Mol	Type	Chain	Res	Link	Chirals	Torsions	Rings
2	YQJ	B	1000	-	-	5/13/13/28	0/2/2/3
2	YQJ	A	1000	-	-	6/11/11/28	0/2/2/3

All (1) bond length outliers are listed below:

Mol	Chain	Res	Type	Atoms	Z	Observed(Å)	Ideal(Å)
2	B	1000	YQJ	C10-N4	3.11	1.40	1.35

All (1) bond angle outliers are listed below:

Mol	Chain	Res	Type	Atoms	Z	Observed(°)	Ideal(°)
2	B	1000	YQJ	N4-C10-N3	-2.03	115.96	118.50

There are no chirality outliers.

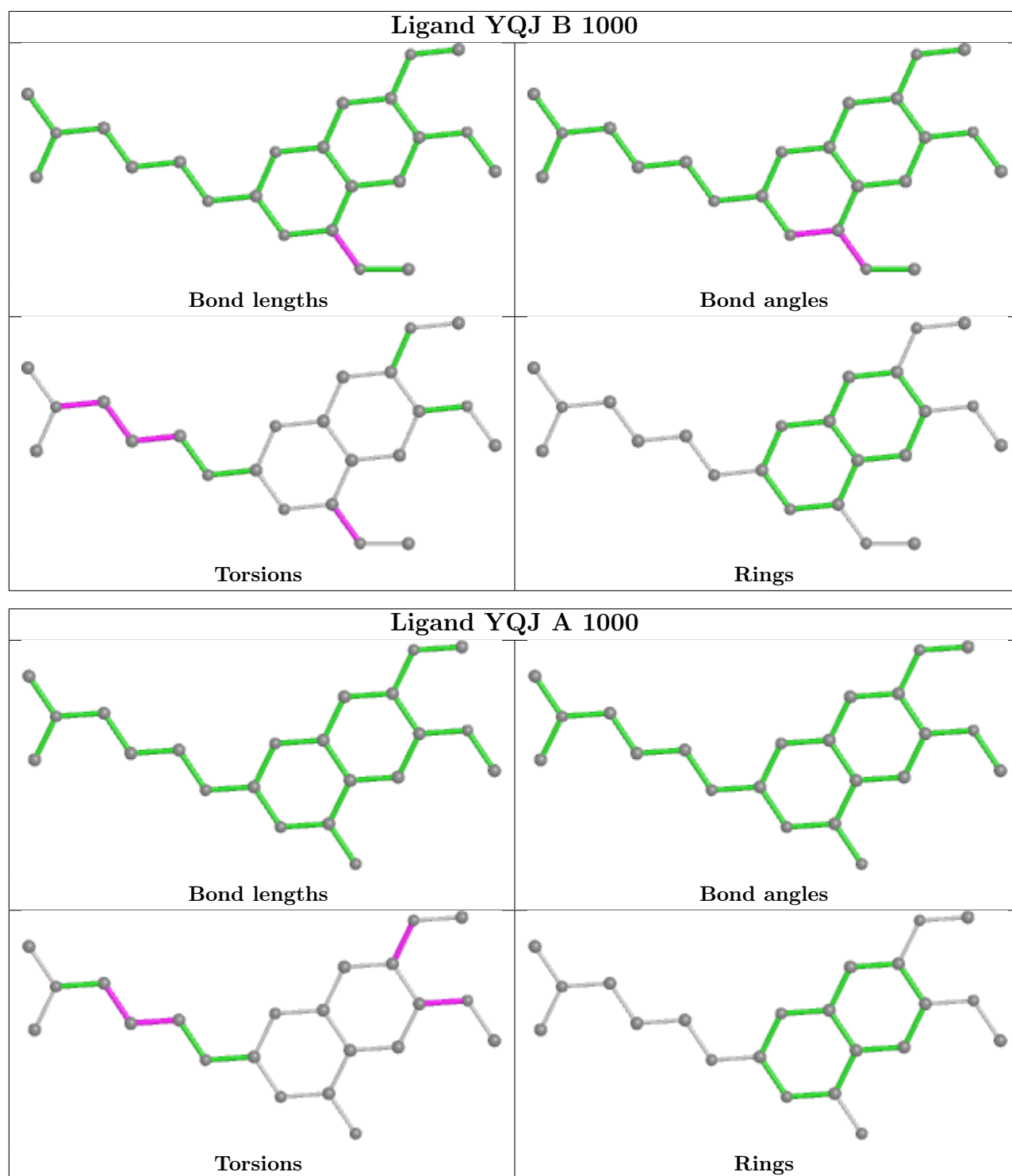
All (11) torsion outliers are listed below:

Mol	Chain	Res	Type	Atoms
2	B	1000	YQJ	N3-C10-N4-C14
2	B	1000	YQJ	C6-C7-N2-C9
2	A	1000	YQJ	C5-C6-C7-N2
2	B	1000	YQJ	C6-C7-N2-C8
2	B	1000	YQJ	N1-C5-C6-C7
2	A	1000	YQJ	N1-C5-C6-C7
2	A	1000	YQJ	C1-C19-O1-C20
2	A	1000	YQJ	C2-C1-O-C
2	A	1000	YQJ	C19-C1-O-C
2	A	1000	YQJ	C18-C19-O1-C20
2	B	1000	YQJ	C5-C6-C7-N2

There are no ring outliers.

No monomer is involved in short contacts.

The following is a two-dimensional graphical depiction of Mogul quality analysis of bond lengths, bond angles, torsion angles, and ring geometry for all instances of the Ligand of Interest. In addition, ligands with molecular weight > 250 and outliers as shown on the validation Tables will also be included. For torsion angles, if less than 5% of the Mogul distribution of torsion angles is within 10 degrees of the torsion angle in question, then that torsion angle is considered an outlier. Any bond that is central to one or more torsion angles identified as an outlier by Mogul will be highlighted in the graph. For rings, the root-mean-square deviation (RMSD) between the ring in question and similar rings identified by Mogul is calculated over all ring torsion angles. If the average RMSD is greater than 60 degrees and the minimal RMSD between the ring in question and any Mogul-identified rings is also greater than 60 degrees, then that ring is considered an outlier. The outliers are highlighted in purple. The color gray indicates Mogul did not find sufficient equivalents in the CSD to analyse the geometry.



5.7 Other polymers [\(i\)](#)

There are no such residues in this entry.

5.8 Polymer linkage issues

There are no chain breaks in this entry.

6 Fit of model and data

6.1 Protein, DNA and RNA chains

In the following table, the column labelled ‘#RSRZ > 2’ contains the number (and percentage) of RSRZ outliers, followed by percent RSRZ outliers for the chain as percentile scores relative to all X-ray entries and entries of similar resolution. The OWAB column contains the minimum, median, 95th percentile and maximum values of the occupancy-weighted average B-factor per residue. The column labelled ‘Q < 0.9’ lists the number of (and percentage) of residues with an average occupancy less than 0.9.

Mol	Chain	Analysed	<RSRZ>	#RSRZ>2	OWAB(Å ²)	Q<0.9
1	A	401/443 (90%)	0.08	20 (4%) 28 30	24, 40, 79, 104	0
1	B	379/443 (85%)	-0.14	6 (1%) 72 74	27, 40, 67, 92	0
All	All	780/886 (88%)	-0.03	26 (3%) 46 47	24, 40, 73, 104	0

All (26) RSRZ outliers are listed below:

Mol	Chain	Res	Type	RSRZ
1	A	89	ASP	4.4
1	A	93	PHE	4.3
1	A	355	SER	4.2
1	A	105	PHE	4.2
1	A	103	GLY	4.0
1	A	90	ASP	3.8
1	A	108	PHE	3.8
1	A	107	GLY	3.7
1	B	8	PHE	3.6
1	A	98	TYR	2.8
1	A	58	GLY	2.8
1	B	351	GLY	2.8
1	A	8	PHE	2.8
1	B	30	PHE	2.8
1	A	106	GLY	2.6
1	A	11	ALA	2.5
1	B	11	ALA	2.5
1	A	92	GLN	2.5
1	A	358	ASP	2.4
1	B	6	ALA	2.3
1	B	361	ASP	2.3
1	A	214	GLY	2.2
1	A	57	GLU	2.1
1	A	211	PRO	2.1

Continued on next page...

Continued from previous page...

Mol	Chain	Res	Type	RSRZ
1	A	354	GLN	2.0
1	A	210	VAL	2.0

6.2 Non-standard residues in protein, DNA, RNA chains [i](#)

There are no non-standard protein/DNA/RNA residues in this entry.

6.3 Carbohydrates [i](#)

There are no monosaccharides in this entry.

6.4 Ligands [i](#)

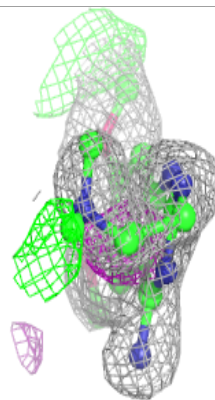
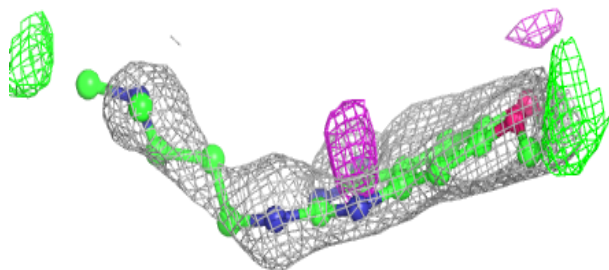
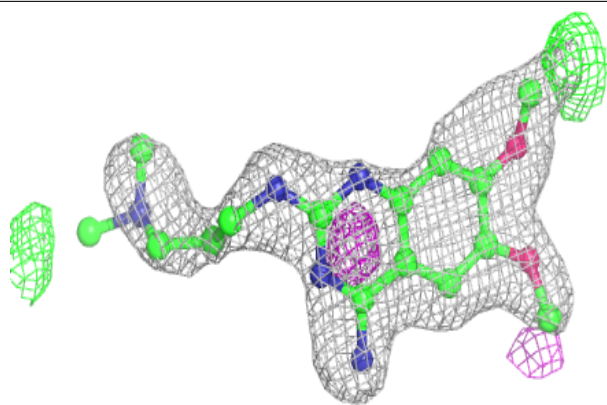
In the following table, the Atoms column lists the number of modelled atoms in the group and the number defined in the chemical component dictionary. The B-factors column lists the minimum, median, 95th percentile and maximum values of B factors of atoms in the group. The column labelled 'Q < 0.9' lists the number of atoms with occupancy less than 0.9.

Mol	Type	Chain	Res	Atoms	RSCC	RSR	B-factors(\AA^2)	Q < 0.9
2	YQJ	A	1000	22/29	0.76	0.21	60,72,76,78	0
2	YQJ	B	1000	23/29	0.87	0.18	49,65,85,88	0

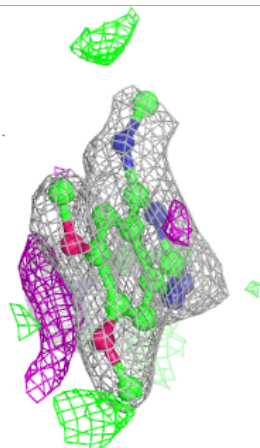
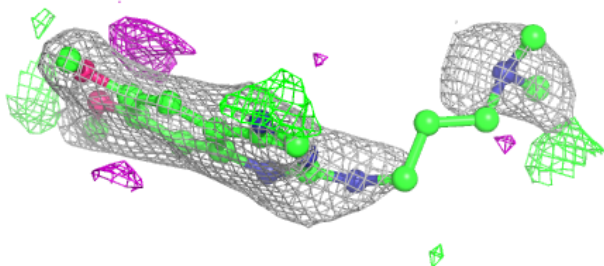
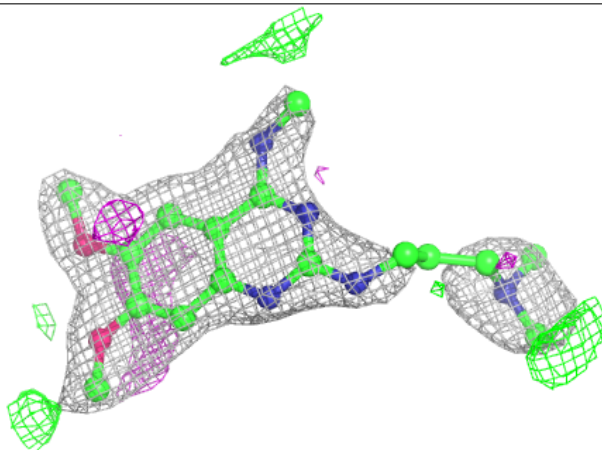
The following is a graphical depiction of the model fit to experimental electron density of all instances of the Ligand of Interest. In addition, ligands with molecular weight > 250 and outliers as shown on the geometry validation Tables will also be included. Each fit is shown from different orientation to approximate a three-dimensional view.

Electron density around YQJ A 1000:

$2mF_o-DF_c$ (at 0.7 rmsd) in gray
 mF_o-DF_c (at 3 rmsd) in purple (negative)
and green (positive)

**Electron density around YQJ B 1000:**

$2mF_o-DF_c$ (at 0.7 rmsd) in gray
 mF_o-DF_c (at 3 rmsd) in purple (negative)
and green (positive)



6.5 Other polymers [i](#)

There are no such residues in this entry.