



Full wwPDB X-ray Structure Validation Report ⓘ

Nov 11, 2024 – 06:17 PM EST

PDB ID : 7FX2
Title : Crystal Structure of human FABP4 binding site mutated to that of FABP5 in complex with 2-[[6,6-difluoro-3-(4-methyl-1,3-thiazol-2-yl)-5,7-dihydro-4H-1-benzothien-2-yl]carbonyl]cyclohexene-1-carboxylic acid, i.e. SMILES N(C(=O)C1=C(CCCC1)C(=O)O)C1=C(C2=NC(=CS2)C)C2=C(S1)CC(CC2)(F)F with IC50=0.0587459 microM
Authors : Ehler, A.; Benz, J.; Obst, U.; Richter, H.; Rudolph, M.G.
Deposited on : 2023-04-27
Resolution : 1.47 Å(reported)

This is a Full wwPDB X-ray Structure Validation Report for a publicly released PDB entry.

We welcome your comments at validation@mail.wwpdb.org

A user guide is available at

<https://www.wwpdb.org/validation/2017/XrayValidationReportHelp>

with specific help available everywhere you see the ⓘ symbol.

The types of validation reports are described at

<http://www.wwpdb.org/validation/2017/FAQs#types>.

The following versions of software and data (see [references ⓘ](#)) were used in the production of this report:

MolProbity : 4.02b-467
Mogul : 2022.3.0, CSD as543be (2022)
Xtriage (Phenix) : 1.20.1
EDS : 3.0
buster-report : 1.1.7 (2018)
Percentile statistics : 20231227.v01 (using entries in the PDB archive December 27th 2023)
CCP4 : 9.0.003 (Gargrove)
Density-Fitness : 1.0.11
Ideal geometry (proteins) : Engh & Huber (2001)

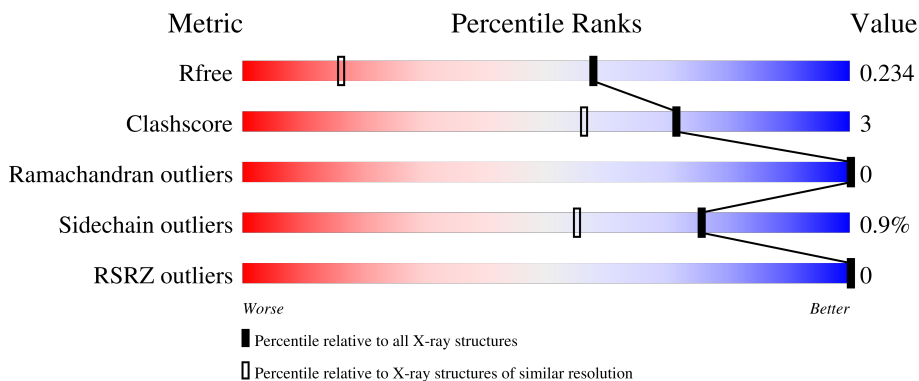
1 Overall quality at a glance

The following experimental techniques were used to determine the structure:

X-RAY DIFFRACTION

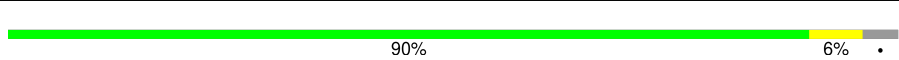
The reported resolution of this entry is 1.47 Å.

Percentile scores (ranging between 0-100) for global validation metrics of the entry are shown in the following graphic. The table shows the number of entries on which the scores are based.



Metric	Whole archive (#Entries)	Similar resolution (#Entries, resolution range(Å))
R_{free}	164625	6131 (1.50-1.46)
Clashscore	180529	6623 (1.50-1.46)
Ramachandran outliers	177936	6521 (1.50-1.46)
Sidechain outliers	177891	6518 (1.50-1.46)
RSRZ outliers	164620	6132 (1.50-1.46)

The table below summarises the geometric issues observed across the polymeric chains and their fit to the electron density. The red, orange, yellow and green segments of the lower bar indicate the fraction of residues that contain outliers for ≥ 3 , 2, 1 and 0 types of geometric quality criteria respectively. A grey segment represents the fraction of residues that are not modelled. The numeric value for each fraction is indicated below the corresponding segment, with a dot representing fractions $\leq 5\%$. The upper red bar (where present) indicates the fraction of residues that have poor fit to the electron density. The numeric value is given above the bar.

Mol	Chain	Length	Quality of chain
1	A	135	

Ideal geometry (DNA, RNA) : Parkinson et al. (1996)
Validation Pipeline (wwPDB-VP) : 2.39

2 Entry composition

There are 3 unique types of molecules in this entry. The entry contains 1210 atoms, of which 0 are hydrogens and 0 are deuteriums.

In the tables below, the ZeroOcc column contains the number of atoms modelled with zero occupancy, the AltConf column contains the number of residues with at least one atom in alternate conformation and the Trace column contains the number of residues modelled with at most 2 atoms.

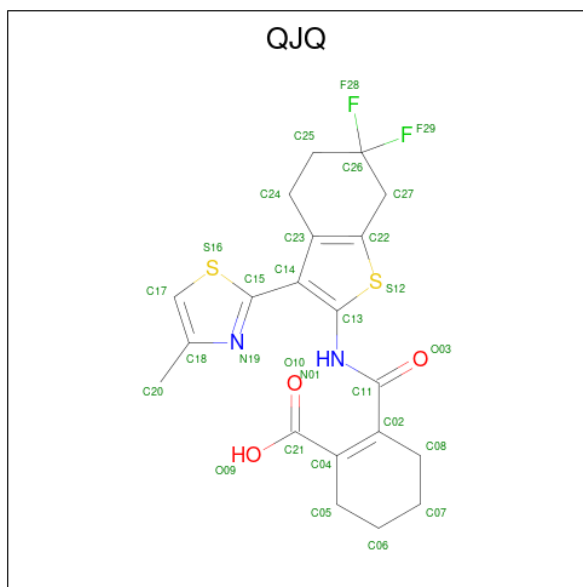
- Molecule 1 is a protein called Fatty acid-binding protein, adipocyte.

Mol	Chain	Residues	Atoms					ZeroOcc	AltConf	Trace
			Total	C	N	O	S			
1	A	130	1037	652	174	203	8	0	5	0

There are 11 discrepancies between the modelled and reference sequences:

Chain	Residue	Modelled	Actual	Comment	Reference
A	-3	GLY	-	expression tag	UNP P15090
A	-2	SER	-	expression tag	UNP P15090
A	-1	HIS	-	expression tag	UNP P15090
A	23	LEU	VAL	engineered mutation	UNP P15090
A	32	MET	VAL	engineered mutation	UNP P15090
A	33	GLY	ALA	engineered mutation	UNP P15090
A	40	CYS	MET	engineered mutation	UNP P15090
A	53	THR	SER	engineered mutation	UNP P15090
A	57	LEU	PHE	engineered mutation	UNP P15090
A	93	GLN	HIS	engineered mutation	UNP P15090
A	124	CYS	SER	engineered mutation	UNP P15090

- Molecule 2 is 2-{{(3M)-6,6-difluoro-3-(4-methyl-1,3-thiazol-2-yl)-4,5,6,7-tetrahydro-1-benzothiophen-2-yl}carbonyl}cyclohex-1-ene-1-carboxylic acid (three-letter code: QJQ) (formula: C₂₀H₂₀F₂N₂O₃S₂) (labeled as "Ligand of Interest" by depositor).



Mol	Chain	Residues	Atoms					ZeroOcc	AltConf	
			Total	C	F	N	O			S
2	A	1	58	40	4	4	6	4	0	1


- Molecule 3 is water.

Mol	Chain	Residues	Atoms		ZeroOcc	AltConf
3	A	115	Total	O	0	0
			115	115		

3 Residue-property plots [i](#)

These plots are drawn for all protein, RNA, DNA and oligosaccharide chains in the entry. The first graphic for a chain summarises the proportions of the various outlier classes displayed in the second graphic. The second graphic shows the sequence view annotated by issues in geometry and electron density. Residues are color-coded according to the number of geometric quality criteria for which they contain at least one outlier: green = 0, yellow = 1, orange = 2 and red = 3 or more. A red dot above a residue indicates a poor fit to the electron density ($RSRZ > 2$). Stretches of 2 or more consecutive residues without any outlier are shown as a green connector. Residues present in the sample, but not in the model, are shown in grey.

- Molecule 1: Fatty acid-binding protein, adipocyte

Chain A:  90% 6% .



4 Data and refinement statistics i

Property	Value	Source
Space group	P 2 21 21	Depositor
Cell constants a, b, c, α , β , γ	31.98Å 52.83Å 72.23Å 90.00° 90.00° 90.00°	Depositor
Resolution (Å)	36.11 – 1.47 36.11 – 1.47	Depositor EDS
% Data completeness (in resolution range)	96.4 (36.11-1.47) 96.4 (36.11-1.47)	Depositor EDS
R_{merge}	0.09	Depositor
R_{sym}	0.09	Depositor
$\langle I/\sigma(I) \rangle$ ¹	1.26 (at 1.47Å)	Xtrriage
Refinement program	REFMAC 5.7.0027	Depositor
R, R_{free}	0.162 , 0.236 0.160 , 0.234	Depositor DCC
R_{free} test set	1110 reflections (5.16%)	wwPDB-VP
Wilson B-factor (Å ²)	15.3	Xtrriage
Anisotropy	0.126	Xtrriage
Bulk solvent k_{sol} (e/Å ³), B_{sol} (Å ²)	0.36 , 44.9	EDS
L-test for twinning ²	$\langle L \rangle = 0.47$, $\langle L^2 \rangle = 0.30$	Xtrriage
Estimated twinning fraction	No twinning to report.	Xtrriage
F_o, F_c correlation	0.97	EDS
Total number of atoms	1210	wwPDB-VP
Average B, all atoms (Å ²)	19.0	wwPDB-VP

Xtrriage's analysis on translational NCS is as follows: *The largest off-origin peak in the Patterson function is 9.78% of the height of the origin peak. No significant pseudotranslation is detected.*

¹Intensities estimated from amplitudes.

²Theoretical values of $\langle |L| \rangle$, $\langle L^2 \rangle$ for acentric reflections are 0.5, 0.333 respectively for untwinned datasets, and 0.375, 0.2 for perfectly twinned datasets.

5 Model quality [i](#)

5.1 Standard geometry [i](#)

Bond lengths and bond angles in the following residue types are not validated in this section: QJQ

The Z score for a bond length (or angle) is the number of standard deviations the observed value is removed from the expected value. A bond length (or angle) with $|Z| > 5$ is considered an outlier worth inspection. RMSZ is the root-mean-square of all Z scores of the bond lengths (or angles).

Mol	Chain	Bond lengths		Bond angles	
		RMSZ	# Z >5	RMSZ	# Z >5
1	A	0.77	0/1063	0.84	0/1427

There are no bond length outliers.

There are no bond angle outliers.

There are no chirality outliers.

There are no planarity outliers.

5.2 Too-close contacts [i](#)

In the following table, the Non-H and H(model) columns list the number of non-hydrogen atoms and hydrogen atoms in the chain respectively. The H(added) column lists the number of hydrogen atoms added and optimized by MolProbity. The Clashes column lists the number of clashes within the asymmetric unit, whereas Symm-Clashes lists symmetry-related clashes.

Mol	Chain	Non-H	H(model)	H(added)	Clashes	Symm-Clashes
1	A	1037	0	1070	7	1
2	A	58	0	0	1	0
3	A	115	0	0	0	0
All	All	1210	0	1070	7	1

The all-atom clashscore is defined as the number of clashes found per 1000 atoms (including hydrogen atoms). The all-atom clashscore for this structure is 3.

All (7) close contacts within the same asymmetric unit are listed below, sorted by their clash magnitude.

Atom-1	Atom-2	Interatomic distance (Å)	Clash overlap (Å)
1:A:2:ASP:N	1:A:5:VAL:HG23	1.93	0.84

Continued on next page...

Continued from previous page...

Atom-1	Atom-2	Interatomic distance (Å)	Clash overlap (Å)
1:A:2:ASP:N	1:A:5:VAL:CG2	2.62	0.63
1:A:117:CYS:SG	2:A:201[B]:QJQ:C06	3.02	0.47
1:A:108[B]:ARG:NH2	1:A:110:ASP:O	2.48	0.46
1:A:8:TRP:HB3	1:A:128:TYR:HB3	2.01	0.42
1:A:2:ASP:N	1:A:2:ASP:OD1	2.53	0.41
1:A:108[A]:ARG:HB3	1:A:108[A]:ARG:NH1	2.36	0.41

All (1) symmetry-related close contacts are listed below. The label for Atom-2 includes the symmetry operator and encoded unit-cell translations to be applied.

Atom-1	Atom-2	Interatomic distance (Å)	Clash overlap (Å)
1:A:2:ASP:CA	1:A:2:ASP:CA[2_555]	2.08	0.12

5.3 Torsion angles [i](#)

5.3.1 Protein backbone [i](#)

In the following table, the Percentiles column shows the percent Ramachandran outliers of the chain as a percentile score with respect to all X-ray entries followed by that with respect to entries of similar resolution.

The Analysed column shows the number of residues for which the backbone conformation was analysed, and the total number of residues.

Mol	Chain	Analysed	Favoured	Allowed	Outliers	Percentiles
1	A	133/135 (98%)	132 (99%)	1 (1%)	0	100 100

There are no Ramachandran outliers to report.

5.3.2 Protein sidechains [i](#)

In the following table, the Percentiles column shows the percent sidechain outliers of the chain as a percentile score with respect to all X-ray entries followed by that with respect to entries of similar resolution.

The Analysed column shows the number of residues for which the sidechain conformation was analysed, and the total number of residues.

Mol	Chain	Analysed	Rotameric	Outliers	Percentiles
1	A	119/118 (101%)	118 (99%)	1 (1%)	79 61

All (1) residues with a non-rotameric sidechain are listed below:

Mol	Chain	Res	Type
1	A	124	CYS

Sometimes sidechains can be flipped to improve hydrogen bonding and reduce clashes. There are no such sidechains identified.

5.3.3 RNA [i](#)

There are no RNA molecules in this entry.

5.4 Non-standard residues in protein, DNA, RNA chains [i](#)

There are no non-standard protein/DNA/RNA residues in this entry.

5.5 Carbohydrates [i](#)

There are no oligosaccharides in this entry.

5.6 Ligand geometry [i](#)

2 ligands are modelled in this entry.

In the following table, the Counts columns list the number of bonds (or angles) for which Mogul statistics could be retrieved, the number of bonds (or angles) that are observed in the model and the number of bonds (or angles) that are defined in the Chemical Component Dictionary. The Link column lists molecule types, if any, to which the group is linked. The Z score for a bond length (or angle) is the number of standard deviations the observed value is removed from the expected value. A bond length (or angle) with $|Z| > 2$ is considered an outlier worth inspection. RMSZ is the root-mean-square of all Z scores of the bond lengths (or angles).

Mol	Type	Chain	Res	Link	Bond lengths			Bond angles		
					Counts	RMSZ	$\# Z > 2$	Counts	RMSZ	$\# Z > 2$
2	QJQ	A	201[B]	-	25,32,32	5.59	17 (68%)	22,48,48	1.54	4 (18%)
2	QJQ	A	201[A]	-	25,32,32	5.56	17 (68%)	22,48,48	1.38	3 (13%)

In the following table, the Chirals column lists the number of chiral outliers, the number of chiral

centers analysed, the number of these observed in the model and the number defined in the Chemical Component Dictionary. Similar counts are reported in the Torsion and Rings columns. '2' means no outliers of that kind were identified.

Mol	Type	Chain	Res	Link	Chirals	Torsions	Rings
2	QJQ	A	201[B]	-	-	5/10/38/38	0/4/4/4
2	QJQ	A	201[A]	-	-	5/10/38/38	0/4/4/4

All (34) bond length outliers are listed below:

Mol	Chain	Res	Type	Atoms	Z	Observed(Å)	Ideal(Å)
2	A	201[B]	QJQ	C15-S16	-11.71	1.57	1.73
2	A	201[A]	QJQ	C15-S16	-11.63	1.57	1.73
2	A	201[B]	QJQ	C07-C06	-9.81	1.15	1.51
2	A	201[A]	QJQ	C07-C06	-9.57	1.16	1.51
2	A	201[A]	QJQ	C17-S16	-9.51	1.55	1.70
2	A	201[B]	QJQ	C17-S16	-9.48	1.55	1.70
2	A	201[A]	QJQ	C04-C02	9.12	1.62	1.36
2	A	201[B]	QJQ	C04-C02	9.09	1.62	1.36
2	A	201[B]	QJQ	C15-N19	8.39	1.43	1.31
2	A	201[A]	QJQ	C15-N19	8.34	1.43	1.31
2	A	201[B]	QJQ	C22-S12	-7.77	1.59	1.74
2	A	201[A]	QJQ	C22-S12	-7.63	1.59	1.74
2	A	201[B]	QJQ	C13-S12	-7.27	1.61	1.72
2	A	201[A]	QJQ	C13-S12	-7.07	1.61	1.72
2	A	201[A]	QJQ	C14-C23	6.34	1.54	1.41
2	A	201[B]	QJQ	C14-C23	6.29	1.54	1.41
2	A	201[B]	QJQ	C25-C24	-6.12	1.40	1.52
2	A	201[A]	QJQ	C25-C24	-6.05	1.40	1.52
2	A	201[A]	QJQ	C27-C22	5.89	1.54	1.50
2	A	201[B]	QJQ	C27-C22	5.82	1.54	1.50
2	A	201[B]	QJQ	C05-C04	-4.47	1.43	1.51
2	A	201[A]	QJQ	C05-C04	-4.23	1.43	1.51
2	A	201[A]	QJQ	C08-C02	-3.56	1.44	1.51
2	A	201[A]	QJQ	C11-N01	3.40	1.42	1.35
2	A	201[B]	QJQ	C08-C02	-3.35	1.45	1.51
2	A	201[B]	QJQ	C11-N01	3.24	1.42	1.35
2	A	201[A]	QJQ	C14-C13	3.23	1.48	1.41
2	A	201[B]	QJQ	C14-C13	3.07	1.47	1.41
2	A	201[B]	QJQ	C25-C26	-2.71	1.44	1.50
2	A	201[A]	QJQ	C25-C26	-2.69	1.44	1.50
2	A	201[B]	QJQ	C06-C05	2.45	1.60	1.52
2	A	201[A]	QJQ	C06-C05	2.40	1.59	1.52
2	A	201[A]	QJQ	C07-C08	2.35	1.59	1.52

Continued on next page...

Continued from previous page...

Mol	Chain	Res	Type	Atoms	Z	Observed(Å)	Ideal(Å)
2	A	201[B]	QJQ	C07-C08	2.25	1.59	1.52

All (7) bond angle outliers are listed below:

Mol	Chain	Res	Type	Atoms	Z	Observed(°)	Ideal(°)
2	A	201[B]	QJQ	O03-C11-C02	3.60	128.25	122.10
2	A	201[A]	QJQ	C25-C26-C27	3.30	117.50	114.35
2	A	201[B]	QJQ	C25-C26-C27	3.23	117.43	114.35
2	A	201[B]	QJQ	C07-C08-C02	2.71	117.68	111.85
2	A	201[A]	QJQ	F29-C26-C25	-2.33	104.91	108.92
2	A	201[A]	QJQ	O03-C11-C02	2.21	125.89	122.10
2	A	201[B]	QJQ	F29-C26-C25	-2.19	105.14	108.92

There are no chirality outliers.

All (10) torsion outliers are listed below:

Mol	Chain	Res	Type	Atoms
2	A	201[A]	QJQ	C08-C02-C11-N01
2	A	201[A]	QJQ	C05-C04-C21-O09
2	A	201[A]	QJQ	C05-C04-C21-O10
2	A	201[B]	QJQ	C08-C02-C11-N01
2	A	201[B]	QJQ	C05-C04-C21-O09
2	A	201[B]	QJQ	C05-C04-C21-O10
2	A	201[A]	QJQ	C02-C04-C21-O09
2	A	201[B]	QJQ	C02-C04-C21-O09
2	A	201[B]	QJQ	C02-C04-C21-O10
2	A	201[A]	QJQ	C02-C04-C21-O10

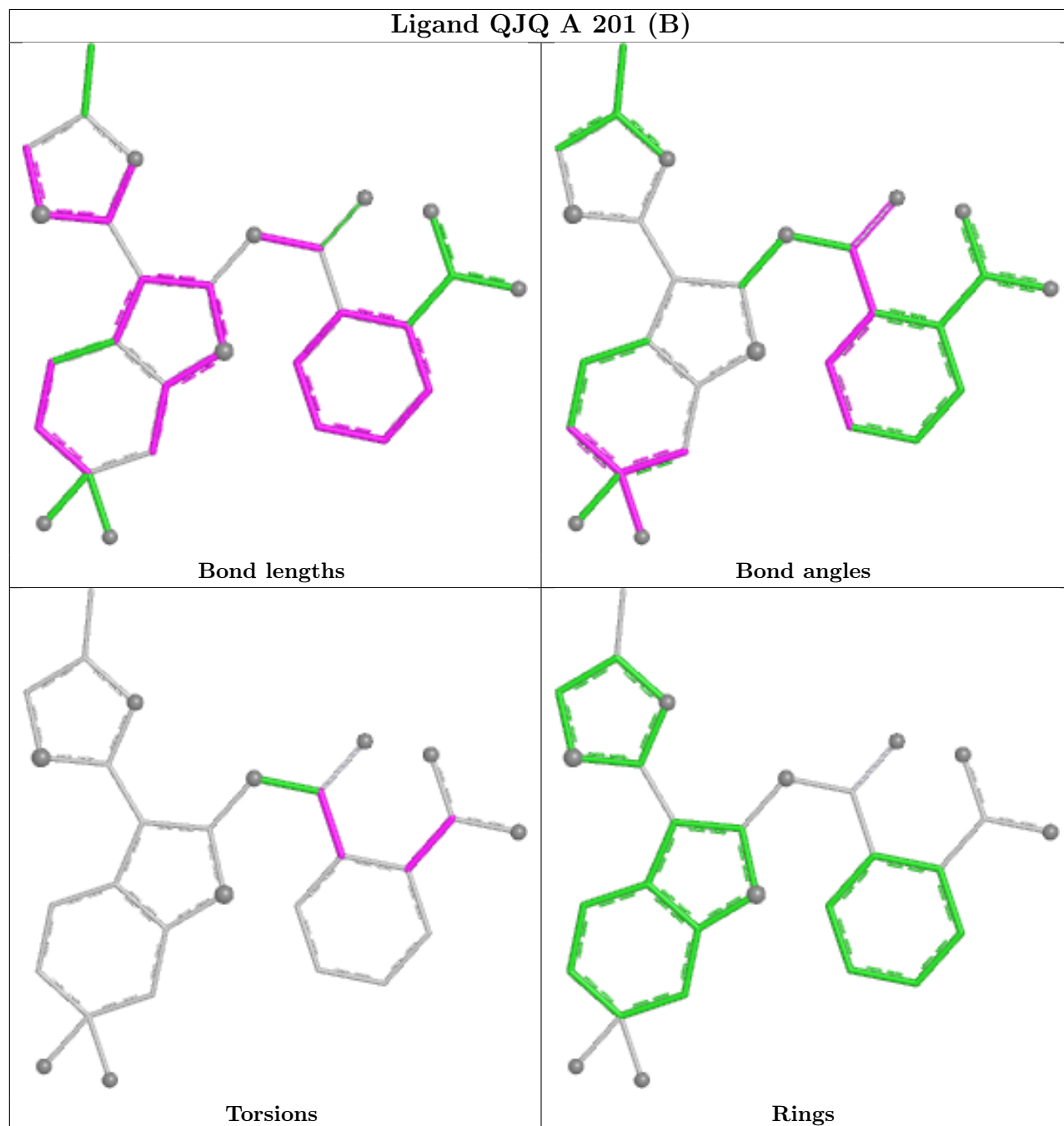
There are no ring outliers.

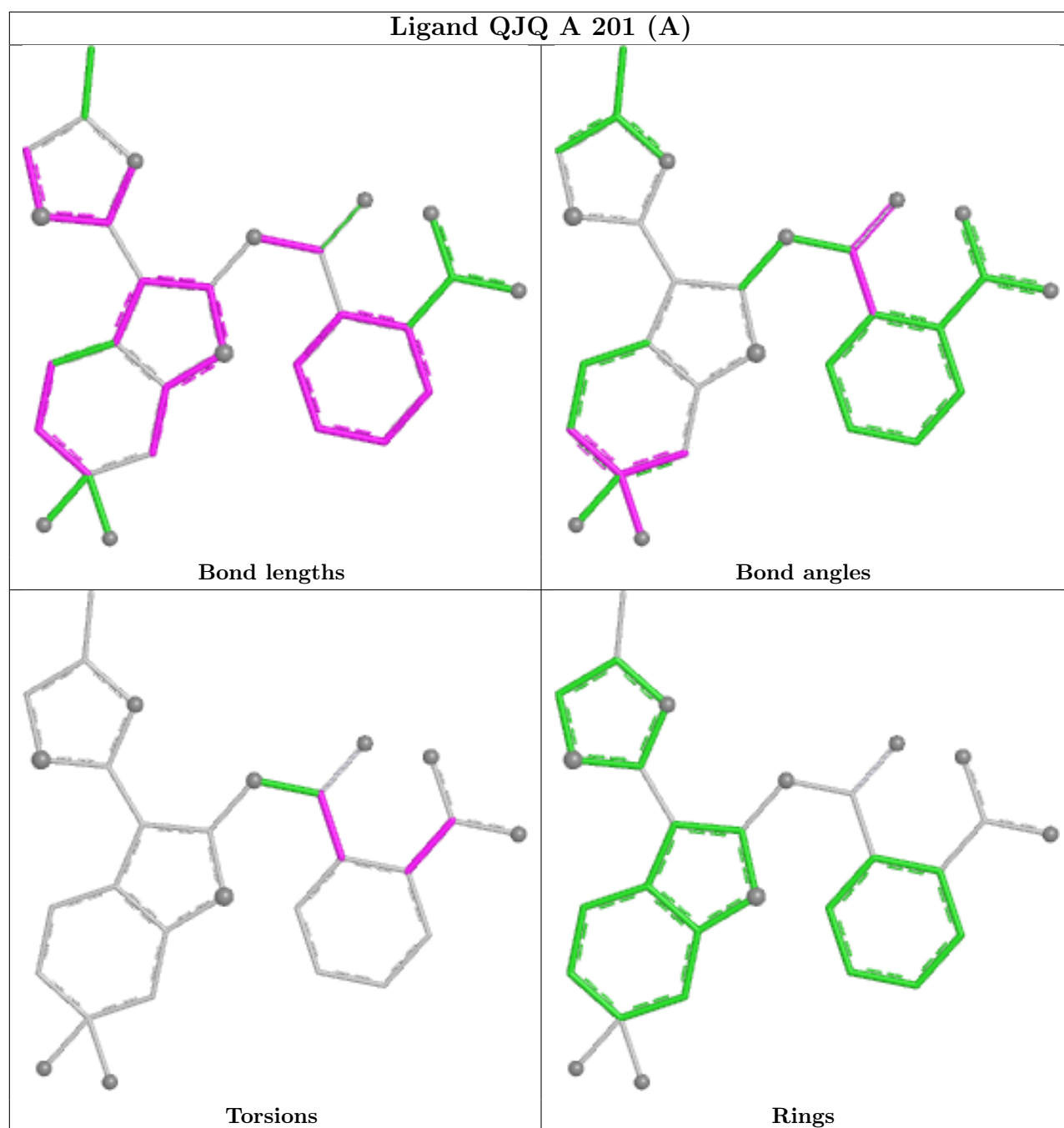
1 monomer is involved in 1 short contact:

Mol	Chain	Res	Type	Clashes	Symm-Clashes
2	A	201[B]	QJQ	1	0

The following is a two-dimensional graphical depiction of Mogul quality analysis of bond lengths, bond angles, torsion angles, and ring geometry for all instances of the Ligand of Interest. In addition, ligands with molecular weight > 250 and outliers as shown on the validation Tables will also be included. For torsion angles, if less than 5% of the Mogul distribution of torsion angles is within 10 degrees of the torsion angle in question, then that torsion angle is considered an outlier. Any bond that is central to one or more torsion angles identified as an outlier by Mogul will be highlighted in the graph. For rings, the root-mean-square deviation (RMSD) between the ring

in question and similar rings identified by Mogul is calculated over all ring torsion angles. If the average RMSD is greater than 60 degrees and the minimal RMSD between the ring in question and any Mogul-identified rings is also greater than 60 degrees, then that ring is considered an outlier. The outliers are highlighted in purple. The color gray indicates Mogul did not find sufficient equivalents in the CSD to analyse the geometry.





5.7 Other polymers [\(i\)](#)

There are no such residues in this entry.

5.8 Polymer linkage issues [\(i\)](#)

There are no chain breaks in this entry.

6 Fit of model and data [i](#)

6.1 Protein, DNA and RNA chains [i](#)

In the following table, the column labelled ‘#RSRZ> 2’ contains the number (and percentage) of RSRZ outliers, followed by percent RSRZ outliers for the chain as percentile scores relative to all X-ray entries and entries of similar resolution. The OWAB column contains the minimum, median, 95th percentile and maximum values of the occupancy-weighted average B-factor per residue. The column labelled ‘Q< 0.9’ lists the number of (and percentage) of residues with an average occupancy less than 0.9.

Mol	Chain	Analysed	<RSRZ>	#RSRZ>2	OWAB(Å ²)	Q<0.9
1	A	130/135 (96%)	-0.50	0 100 100	9, 16, 30, 42	5 (3%)

There are no RSRZ outliers to report.

6.2 Non-standard residues in protein, DNA, RNA chains [i](#)

There are no non-standard protein/DNA/RNA residues in this entry.

6.3 Carbohydrates [i](#)

There are no monosaccharides in this entry.

6.4 Ligands [i](#)

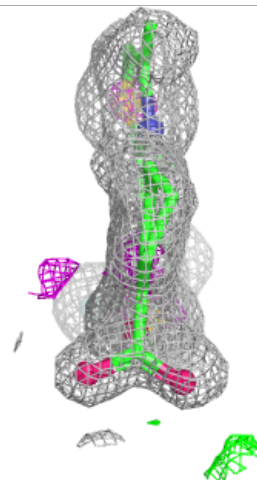
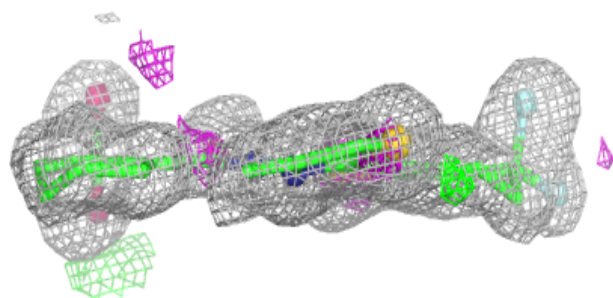
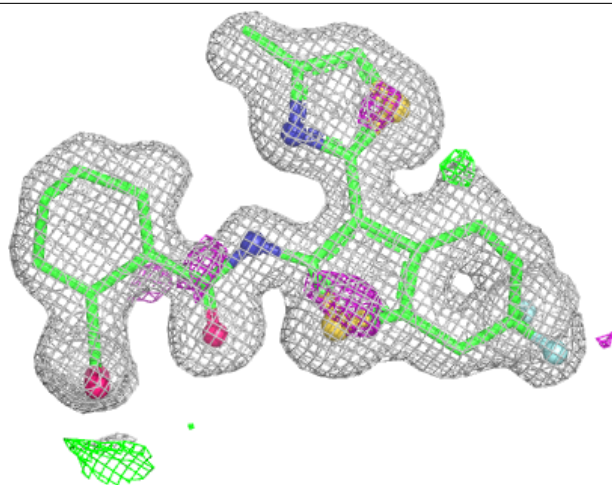
In the following table, the Atoms column lists the number of modelled atoms in the group and the number defined in the chemical component dictionary. The B-factors column lists the minimum, median, 95th percentile and maximum values of B factors of atoms in the group. The column labelled ‘Q< 0.9’ lists the number of atoms with occupancy less than 0.9.

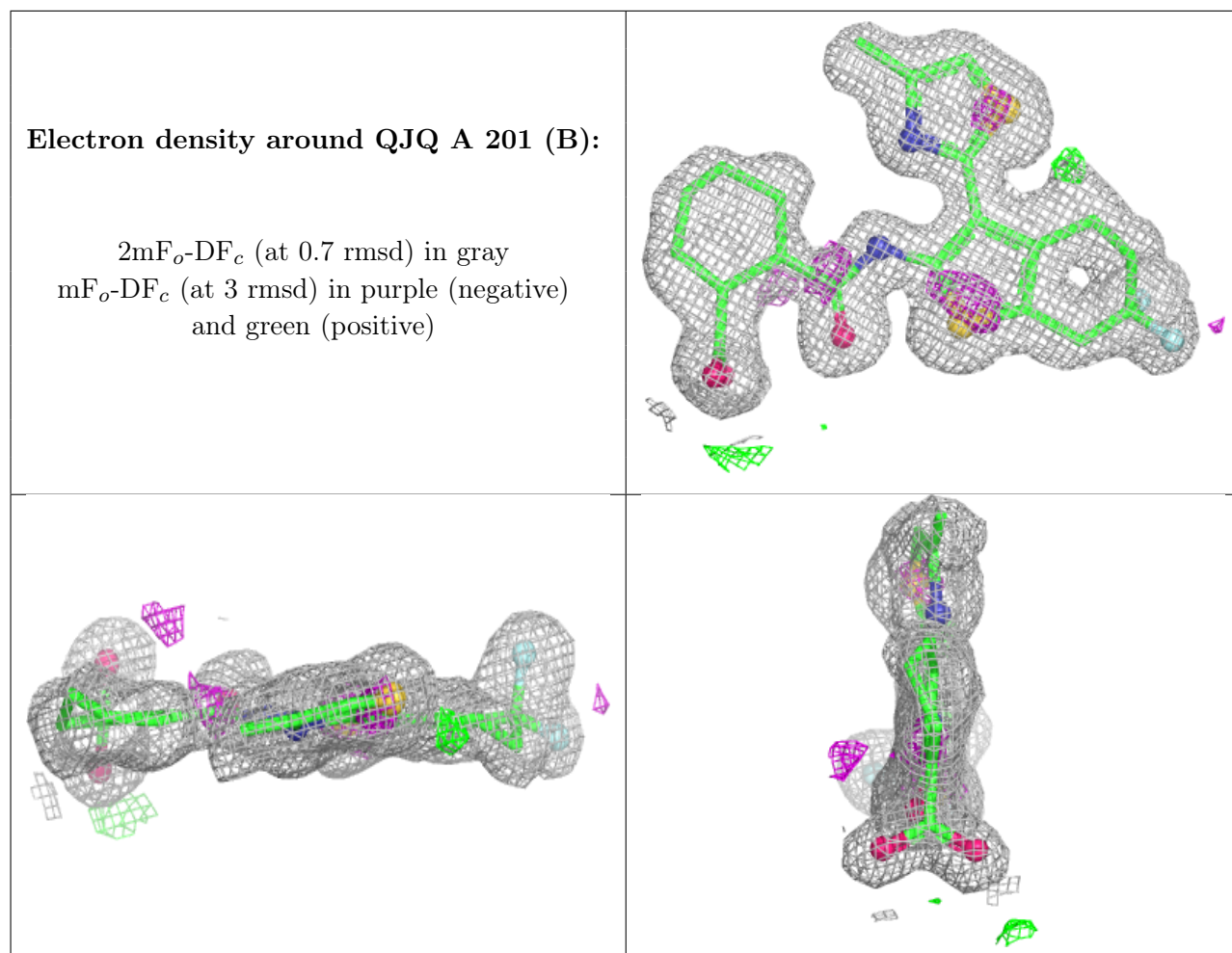
Mol	Type	Chain	Res	Atoms	RSCC	RSR	B-factors(Å ²)	Q<0.9
2	QJQ	A	201[A]	29/29	0.95	0.07	18,22,30,35	29
2	QJQ	A	201[B]	29/29	0.95	0.07	18,22,29,35	29

The following is a graphical depiction of the model fit to experimental electron density of all instances of the Ligand of Interest. In addition, ligands with molecular weight > 250 and outliers as shown on the geometry validation Tables will also be included. Each fit is shown from different orientation to approximate a three-dimensional view.

Electron density around QJQ A 201 (A):

$2mF_o-DF_c$ (at 0.7 rmsd) in gray
 mF_o-DF_c (at 3 rmsd) in purple (negative)
and green (positive)





6.5 Other polymers [i](#)

There are no such residues in this entry.