



Full wwPDB X-ray Structure Validation Report ⓘ

Oct 25, 2022 – 03:40 PM EDT

PDB ID : 7FM9
Title : PanDDA analysis group deposition – Aar2/RNaseH in complex with fragment P06B02 from the F2X-Universal Library
Authors : Barthel, T.; Wollenhaupt, J.; Lima, G.M.A.; Wahl, M.C.; Weiss, M.S.
Deposited on : 2022-08-26
Resolution : 1.59 Å(reported)

This is a Full wwPDB X-ray Structure Validation Report for a publicly released PDB entry.

We welcome your comments at validation@mail.wwpdb.org

A user guide is available at

<https://www.wwpdb.org/validation/2017/XrayValidationReportHelp>

with specific help available everywhere you see the ⓘ symbol.

The types of validation reports are described at

<http://www.wwpdb.org/validation/2017/FAQs#types>.

The following versions of software and data (see [references ⓘ](#)) were used in the production of this report:

MolProbity : 4.02b-467
Mogul : 1.8.5 (274361), CSD as541be (2020)
Xtriage (Phenix) : 1.13
EDS : 2.31.2
Percentile statistics : 20191225.v01 (using entries in the PDB archive December 25th 2019)
Refmac : 5.8.0158
CCP4 : 7.0.044 (Gargrove)
Ideal geometry (proteins) : Engh & Huber (2001)
Ideal geometry (DNA, RNA) : Parkinson et al. (1996)
Validation Pipeline (wwPDB-VP) : 2.31.2

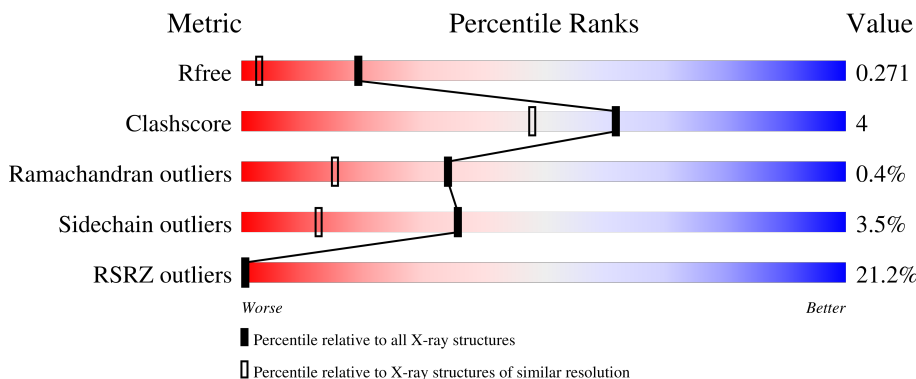
1 Overall quality at a glance

The following experimental techniques were used to determine the structure:

X-RAY DIFFRACTION

The reported resolution of this entry is 1.59 Å.

Percentile scores (ranging between 0-100) for global validation metrics of the entry are shown in the following graphic. The table shows the number of entries on which the scores are based.



Metric	Whole archive (#Entries)	Similar resolution (#Entries, resolution range(Å))
R_{free}	130704	3398 (1.60-1.60)
Clashscore	141614	3665 (1.60-1.60)
Ramachandran outliers	138981	3564 (1.60-1.60)
Sidechain outliers	138945	3563 (1.60-1.60)
RSRZ outliers	127900	3321 (1.60-1.60)

The table below summarises the geometric issues observed across the polymeric chains and their fit to the electron density. The red, orange, yellow and green segments of the lower bar indicate the fraction of residues that contain outliers for ≥ 3 , 2, 1 and 0 types of geometric quality criteria respectively. A grey segment represents the fraction of residues that are not modelled. The numeric value for each fraction is indicated below the corresponding segment, with a dot representing fractions $\leq 5\%$. The upper red bar (where present) indicates the fraction of residues that have poor fit to the electron density. The numeric value is given above the bar.

Mol	Chain	Length	Quality of chain
1	A	258	
2	B	308	

The following table lists non-polymeric compounds, carbohydrate monomers and non-standard residues in protein, DNA, RNA chains that are outliers for geometric or electron-density-fit criteria:

Mol	Type	Chain	Res	Chirality	Geometry	Clashes	Electron density
3	VQQ	B	401	-	X	-	-
3	VQQ	B	404	-	X	-	-

2 Entry composition

There are 4 unique types of molecules in this entry. The entry contains 9221 atoms, of which 4518 are hydrogens and 0 are deuteriums.

In the tables below, the ZeroOcc column contains the number of atoms modelled with zero occupancy, the AltConf column contains the number of residues with at least one atom in alternate conformation and the Trace column contains the number of residues modelled with at most 2 atoms.

- Molecule 1 is a protein called Pre-mRNA-splicing factor 8.

Mol	Chain	Residues	Atoms					ZeroOcc	AltConf	Trace	
			Total	C	H	N	O				S
1	A	237	4068	1287	2060	336	373	12	18	21	0

There are 3 discrepancies between the modelled and reference sequences:

Chain	Residue	Modelled	Actual	Comment	Reference
A	1833	GLY	-	expression tag	UNP P33334
A	1834	ALA	-	expression tag	UNP P33334
A	1835	MET	-	expression tag	UNP P33334

- Molecule 2 is a protein called A1 cistron-splicing factor AAR2.

Mol	Chain	Residues	Atoms					ZeroOcc	AltConf	Trace	
			Total	C	H	N	O				S
2	B	300	5033	1651	2458	420	484	20	0	16	0

There are 20 discrepancies between the modelled and reference sequences:

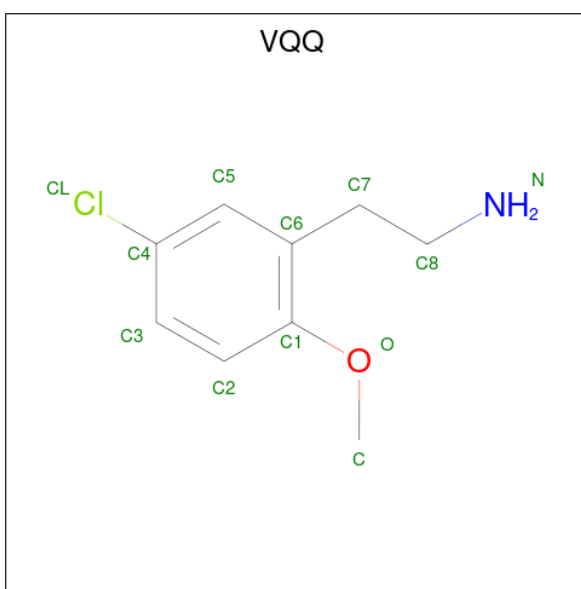
Chain	Residue	Modelled	Actual	Comment	Reference
B	-3	GLY	-	expression tag	UNP P32357
B	-2	ALA	-	expression tag	UNP P32357
B	-1	MET	-	expression tag	UNP P32357
B	0	ALA	-	expression tag	UNP P32357
B	166	SER	LEU	conflict	UNP P32357
B	167	SER	LYS	conflict	UNP P32357
B	?	-	LEU	deletion	UNP P32357
B	?	-	GLN	deletion	UNP P32357
B	?	-	LYS	deletion	UNP P32357
B	?	-	ALA	deletion	UNP P32357
B	?	-	GLY	deletion	UNP P32357
B	?	-	SER	deletion	UNP P32357
B	?	-	LYS	deletion	UNP P32357

Continued on next page...

Continued from previous page...

Chain	Residue	Modelled	Actual	Comment	Reference
B	?	-	MET	deletion	UNP P32357
B	?	-	GLU	deletion	UNP P32357
B	?	-	ALA	deletion	UNP P32357
B	?	-	LYS	deletion	UNP P32357
B	?	-	ASN	deletion	UNP P32357
B	?	-	GLU	deletion	UNP P32357
B	170	SER	ASP	conflict	UNP P32357

- Molecule 3 is 2-(5-chloro-2-methoxyphenyl)ethan-1-amine (three-letter code: VQQ) (formula: C₉H₁₂ClNO).



Mol	Chain	Residues	Atoms				ZeroOcc	AltConf	
			Total	C	Cl	N			O
3	B	1	Total	C	Cl	N	O	0	0
			12	9	1	1	1		
3	B	1	Total	C	Cl	N	O	0	0
			12	9	1	1	1		
3	B	1	Total	C	Cl	N	O	0	0
			12	9	1	1	1		
3	B	1	Total	C	Cl	N	O	0	0
			12	9	1	1	1		

- Molecule 4 is water.

Mol	Chain	Residues	Atoms		ZeroOcc	AltConf
4	A	43	Total	O	0	0
			43	43		

Continued on next page...

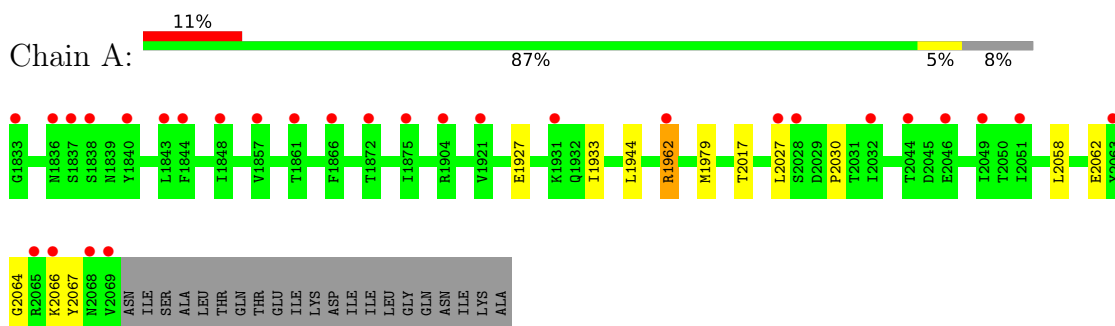
Continued from previous page...

Mol	Chain	Residues	Atoms		ZeroOcc	AltConf
4	B	29	Total	O	0	0
			29	29		

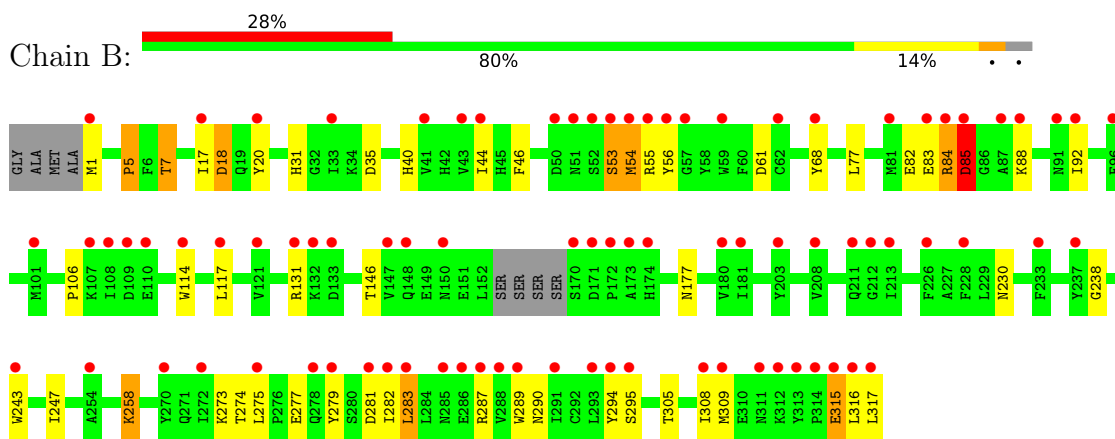
3 Residue-property plots [i](#)

These plots are drawn for all protein, RNA, DNA and oligosaccharide chains in the entry. The first graphic for a chain summarises the proportions of the various outlier classes displayed in the second graphic. The second graphic shows the sequence view annotated by issues in geometry and electron density. Residues are color-coded according to the number of geometric quality criteria for which they contain at least one outlier: green = 0, yellow = 1, orange = 2 and red = 3 or more. A red dot above a residue indicates a poor fit to the electron density ($RSRZ > 2$). Stretches of 2 or more consecutive residues without any outlier are shown as a green connector. Residues present in the sample, but not in the model, are shown in grey.

- Molecule 1: Pre-mRNA-splicing factor 8



- Molecule 2: A1 cistron-splicing factor AAR2



4 Data and refinement statistics

Property	Value	Source
Space group	C 1 2 1	Depositor
Cell constants a, b, c, α , β , γ	88.02Å 81.66Å 94.43Å 90.00° 109.07° 90.00°	Depositor
Resolution (Å)	40.83 – 1.59 44.37 – 1.59	Depositor EDS
% Data completeness (in resolution range)	99.3 (40.83-1.59) 99.4 (44.37-1.59)	Depositor EDS
R_{merge}	(Not available)	Depositor
R_{sym}	(Not available)	Depositor
$\langle I/\sigma(I) \rangle$ ¹	0.96 (at 1.58Å)	Xtrriage
Refinement program	PHENIX 1.17.1_3660	Depositor
R, R_{free}	0.220 , 0.259 0.256 , 0.271	Depositor DCC
R_{free} test set	2095 reflections (2.47%)	wwPDB-VP
Wilson B-factor (Å ²)	41.1	Xtrriage
Anisotropy	0.352	Xtrriage
Bulk solvent k_{sol} (e/Å ³), B_{sol} (Å ²)	0.39 , 47.0	EDS
L-test for twinning ²	$\langle L \rangle = 0.50$, $\langle L^2 \rangle = 0.34$	Xtrriage
Estimated twinning fraction	No twinning to report.	Xtrriage
F_o, F_c correlation	0.96	EDS
Total number of atoms	9221	wwPDB-VP
Average B, all atoms (Å ²)	62.0	wwPDB-VP

Xtrriage's analysis on translational NCS is as follows: *The largest off-origin peak in the Patterson function is 5.48% of the height of the origin peak. No significant pseudotranslation is detected.*

¹Intensities estimated from amplitudes.

²Theoretical values of $\langle |L| \rangle$, $\langle L^2 \rangle$ for acentric reflections are 0.5, 0.333 respectively for untwinned datasets, and 0.375, 0.2 for perfectly twinned datasets.

5 Model quality i

5.1 Standard geometry i

Bond lengths and bond angles in the following residue types are not validated in this section: VQQ

The Z score for a bond length (or angle) is the number of standard deviations the observed value is removed from the expected value. A bond length (or angle) with $|Z| > 5$ is considered an outlier worth inspection. RMSZ is the root-mean-square of all Z scores of the bond lengths (or angles).

Mol	Chain	Bond lengths		Bond angles	
		RMSZ	# Z >5	RMSZ	# Z >5
1	A	0.65	2/2149 (0.1%)	0.74	1/2911 (0.0%)
2	B	0.77	5/2731 (0.2%)	0.90	10/3688 (0.3%)
All	All	0.72	7/4880 (0.1%)	0.83	11/6599 (0.2%)

Chiral center outliers are detected by calculating the chiral volume of a chiral center and verifying if the center is modelled as a planar moiety or with the opposite hand. A planarity outlier is detected by checking planarity of atoms in a peptide group, atoms in a mainchain group or atoms of a sidechain that are expected to be planar.

Mol	Chain	#Chirality outliers	#Planarity outliers
2	B	0	4

All (7) bond length outliers are listed below:

Mol	Chain	Res	Type	Atoms	Z	Observed(Å)	Ideal(Å)
2	B	5	PRO	N-CA	9.84	1.64	1.47
1	A	2064	GLY	C-O	-5.95	1.14	1.23
2	B	18	ASP	CG-OD2	-5.68	1.12	1.25
1	A	2030	PRO	C-O	-5.34	1.12	1.23
2	B	82	GLU	CD-OE1	-5.19	1.20	1.25
2	B	44[A]	ILE	C-N	5.17	1.46	1.34
2	B	44[B]	ILE	C-N	5.17	1.46	1.34

All (11) bond angle outliers are listed below:

Mol	Chain	Res	Type	Atoms	Z	Observed(°)	Ideal(°)
2	B	5	PRO	CA-N-CD	-7.30	101.28	111.50
1	A	2027	LEU	O-C-N	-6.32	112.60	122.70
2	B	5	PRO	CB-CA-C	5.59	125.98	112.00
2	B	44[A]	ILE	O-C-N	5.38	131.31	122.70

Continued on next page...

Continued from previous page...

Mol	Chain	Res	Type	Atoms	Z	Observed(°)	Ideal(°)
2	B	44[B]	ILE	O-C-N	5.38	131.31	122.70
2	B	7	THR	CA-CB-OG1	-5.31	97.85	109.00
2	B	230	ASN	CA-C-O	5.17	130.96	120.10
2	B	273	LYS	CB-CA-C	-5.09	100.22	110.40
2	B	5	PRO	N-CD-CG	5.03	110.74	103.20
2	B	18	ASP	CB-CG-OD2	-5.01	113.79	118.30
2	B	5	PRO	N-CA-C	-5.01	99.08	112.10

There are no chirality outliers.

All (4) planarity outliers are listed below:

Mol	Chain	Res	Type	Group
2	B	53	SER	Mainchain
2	B	54[A]	MET	Mainchain
2	B	54[B]	MET	Mainchain

5.2 Too-close contacts

In the following table, the Non-H and H(model) columns list the number of non-hydrogen atoms and hydrogen atoms in the chain respectively. The H(added) column lists the number of hydrogen atoms added and optimized by MolProbity. The Clashes column lists the number of clashes within the asymmetric unit, whereas Symm-Clashes lists symmetry-related clashes.

Mol	Chain	Non-H	H(model)	H(added)	Clashes	Symm-Clashes
1	A	2008	2060	1974	6	1
2	B	2575	2458	2392	34	1
3	B	48	0	0	2	0
4	A	43	0	0	1	0
4	B	29	0	0	2	0
All	All	4703	4518	4366	40	1

The all-atom clashscore is defined as the number of clashes found per 1000 atoms (including hydrogen atoms). The all-atom clashscore for this structure is 4.

All (40) close contacts within the same asymmetric unit are listed below, sorted by their clash magnitude.

Atom-1	Atom-2	Interatomic distance (Å)	Clash overlap (Å)
2:B:283:LEU:O	2:B:283:LEU:HD22	1.78	0.83
2:B:117:LEU:HD11	2:B:274:THR:HG21	1.61	0.82

Continued on next page...

Continued from previous page...

Atom-1	Atom-2	Interatomic distance (Å)	Clash overlap (Å)
2:B:85:ASP:OD1	2:B:88:LYS:N	2.15	0.79
2:B:277:GLU:O	4:B:501:HOH:O	2.08	0.70
2:B:85:ASP:O	2:B:88:LYS:N	2.28	0.65
1:A:1927:GLU:OE1	4:A:2101:HOH:O	2.16	0.62
2:B:243:TRP:NE1	2:B:247:ILE:HD11	2.13	0.62
2:B:83:GLU:OE2	2:B:88:LYS:HD3	2.00	0.61
2:B:20:TYR:CD2	2:B:106:PRO:HD2	2.40	0.56
1:A:2017[B]:THR:HG22	1:A:2062:GLU:HG2	1.90	0.54
2:B:83:GLU:HA	2:B:83:GLU:OE1	2.08	0.53
1:A:2058:LEU:C	1:A:2058:LEU:HD23	2.30	0.52
2:B:83:GLU:OE2	2:B:88:LYS:CD	2.59	0.51
2:B:84:ARG:CZ	2:B:84:ARG:CB	2.90	0.49
2:B:7:THR:HG22	3:B:401:VQQ:C4	2.43	0.49
2:B:84:ARG:NH1	2:B:84:ARG:HB3	2.27	0.48
2:B:84:ARG:CZ	2:B:84:ARG:HB3	2.43	0.47
2:B:281:ASP:N	2:B:281:ASP:OD1	2.47	0.47
2:B:40:HIS:HD2	4:B:507:HOH:O	1.97	0.47
2:B:294:TYR:CE2	2:B:317:LEU:HD13	2.50	0.46
2:B:18:ASP:HB3	2:B:114:TRP:CE3	2.51	0.46
1:A:2067:TYR:CD1	1:A:2067:TYR:N	2.84	0.45
2:B:46:PHE:HB2	2:B:56:TYR:CZ	2.52	0.45
2:B:305:THR:O	2:B:309:MET:HG3	2.18	0.44
2:B:287:ARG:O	2:B:287:ARG:HG2	2.16	0.44
1:A:1962:ARG:HD3	1:A:1962:ARG:H	1.83	0.43
2:B:68:TYR:OH	3:B:401:VQQ:N	2.51	0.43
2:B:258:LYS:HD2	2:B:258:LYS:H	1.84	0.43
2:B:315:GLU:CD	2:B:315:GLU:N	2.72	0.43
2:B:77:LEU:N	2:B:77:LEU:HD23	2.35	0.42
2:B:5:PRO:HA	2:B:31:HIS:O	2.20	0.42
2:B:20:TYR:CE2	2:B:106:PRO:HD2	2.55	0.42
1:A:1933:ILE:HG21	1:A:1944:LEU:HD21	2.01	0.42
2:B:243:TRP:CZ2	2:B:289:TRP:HZ2	2.38	0.41
2:B:146:THR:HG23	2:B:238:GLY:HA3	2.02	0.41
2:B:131:ARG:HH21	2:B:177[B]:ASN:ND2	2.19	0.41
2:B:283:LEU:HD22	2:B:283:LEU:C	2.38	0.41
2:B:258:LYS:H	2:B:258:LYS:CD	2.34	0.41
2:B:1:MET:HB3	2:B:35:ASP:HA	2.04	0.40

All (1) symmetry-related close contacts are listed below. The label for Atom-2 includes the symmetry operator and encoded unit-cell translations to be applied.

Atom-1	Atom-2	Interatomic distance (Å)	Clash overlap (Å)
1:A:2066:LYS:HG2	2:B:279:TYR:HE1[2_655]	1.27	0.33

5.3 Torsion angles [i](#)

5.3.1 Protein backbone [i](#)

In the following table, the Percentiles column shows the percent Ramachandran outliers of the chain as a percentile score with respect to all X-ray entries followed by that with respect to entries of similar resolution.

The Analysed column shows the number of residues for which the backbone conformation was analysed, and the total number of residues.

Mol	Chain	Analysed	Favoured	Allowed	Outliers	Percentiles	
1	A	258/258 (100%)	252 (98%)	6 (2%)	0	100	100
2	B	314/308 (102%)	299 (95%)	12 (4%)	3 (1%)	15	3
All	All	572/566 (101%)	551 (96%)	18 (3%)	3 (0%)	34	11

All (3) Ramachandran outliers are listed below:

Mol	Chain	Res	Type
2	B	54[A]	MET
2	B	54[B]	MET
2	B	85	ASP

5.3.2 Protein sidechains [i](#)

In the following table, the Percentiles column shows the percent sidechain outliers of the chain as a percentile score with respect to all X-ray entries followed by that with respect to entries of similar resolution.

The Analysed column shows the number of residues for which the sidechain conformation was analysed, and the total number of residues.

Mol	Chain	Analysed	Rotameric	Outliers	Percentiles	
1	A	237/233 (102%)	233 (98%)	4 (2%)	60	38
2	B	293/284 (103%)	277 (94%)	16 (6%)	21	5
All	All	530/517 (102%)	510 (96%)	20 (4%)	36	10

All (20) residues with a non-rotameric sidechain are listed below:

Mol	Chain	Res	Type
1	A	1962	ARG
1	A	1979[A]	MET
1	A	1979[B]	MET
1	A	1979[C]	MET
2	B	17	ILE
2	B	53	SER
2	B	55[A]	ARG
2	B	55[B]	ARG
2	B	84	ARG
2	B	85	ASP
2	B	92	ILE
2	B	258	LYS
2	B	275	LEU
2	B	282	ILE
2	B	283	LEU
2	B	290	ASN
2	B	295	SER
2	B	308	ILE
2	B	315	GLU
2	B	316	LEU

Sometimes sidechains can be flipped to improve hydrogen bonding and reduce clashes. All (1) such sidechains are listed below:

Mol	Chain	Res	Type
2	B	290	ASN

5.3.3 RNA [i](#)

There are no RNA molecules in this entry.

5.4 Non-standard residues in protein, DNA, RNA chains [i](#)

There are no non-standard protein/DNA/RNA residues in this entry.

5.5 Carbohydrates [i](#)

There are no monosaccharides in this entry.

5.6 Ligand geometry

4 ligands are modelled in this entry.

In the following table, the Counts columns list the number of bonds (or angles) for which Mogul statistics could be retrieved, the number of bonds (or angles) that are observed in the model and the number of bonds (or angles) that are defined in the Chemical Component Dictionary. The Link column lists molecule types, if any, to which the group is linked. The Z score for a bond length (or angle) is the number of standard deviations the observed value is removed from the expected value. A bond length (or angle) with $|Z| > 2$ is considered an outlier worth inspection. RMSZ is the root-mean-square of all Z scores of the bond lengths (or angles).

Mol	Type	Chain	Res	Link	Bond lengths			Bond angles		
					Counts	RMSZ	# Z > 2	Counts	RMSZ	# Z > 2
3	VQQ	B	403	-	11,12,12	2.04	3 (27%)	14,15,15	1.40	1 (7%)
3	VQQ	B	402	-	11,12,12	2.73	5 (45%)	14,15,15	1.44	3 (21%)
3	VQQ	B	404	-	11,12,12	5.46	7 (63%)	14,15,15	4.68	12 (85%)
3	VQQ	B	401	-	11,12,12	3.39	8 (72%)	14,15,15	2.87	11 (78%)

In the following table, the Chirals column lists the number of chiral outliers, the number of chiral centers analysed, the number of these observed in the model and the number defined in the Chemical Component Dictionary. Similar counts are reported in the Torsion and Rings columns. '-' means no outliers of that kind were identified.

Mol	Type	Chain	Res	Link	Chirals	Torsions	Rings
3	VQQ	B	403	-	-	1/5/5/5	0/1/1/1
3	VQQ	B	402	-	-	2/5/5/5	0/1/1/1
3	VQQ	B	404	-	-	4/5/5/5	0/1/1/1
3	VQQ	B	401	-	-	2/5/5/5	0/1/1/1

All (23) bond length outliers are listed below:

Mol	Chain	Res	Type	Atoms	Z	Observed(Å)	Ideal(Å)
3	B	404	VQQ	C4-CL	-10.54	1.51	1.74
3	B	404	VQQ	C7-C6	-8.48	1.35	1.51
3	B	404	VQQ	C2-C3	-7.46	1.25	1.38
3	B	404	VQQ	C3-C4	-7.29	1.24	1.38
3	B	402	VQQ	C4-CL	-6.90	1.59	1.74
3	B	401	VQQ	C5-C6	-6.22	1.28	1.39
3	B	401	VQQ	C5-C4	-4.71	1.30	1.38
3	B	403	VQQ	C4-CL	-4.49	1.64	1.74
3	B	401	VQQ	C7-C6	-4.07	1.44	1.51
3	B	404	VQQ	C2-C1	-4.02	1.31	1.39
3	B	403	VQQ	O-C1	-3.71	1.31	1.37

Continued on next page...

Continued from previous page...

Mol	Chain	Res	Type	Atoms	Z	Observed(Å)	Ideal(Å)
3	B	401	VQQ	O-C1	-3.53	1.31	1.37
3	B	401	VQQ	C2-C3	-3.37	1.32	1.38
3	B	401	VQQ	C3-C4	-3.09	1.32	1.38
3	B	404	VQQ	O-C1	-2.88	1.32	1.37
3	B	402	VQQ	C1-C6	-2.76	1.35	1.40
3	B	402	VQQ	C2-C3	-2.63	1.34	1.38
3	B	401	VQQ	O-C	-2.58	1.35	1.42
3	B	402	VQQ	O-C1	-2.54	1.33	1.37
3	B	404	VQQ	C5-C4	-2.52	1.34	1.38
3	B	401	VQQ	C4-CL	2.46	1.79	1.74
3	B	403	VQQ	C7-C6	-2.05	1.47	1.51
3	B	402	VQQ	C7-C6	-2.02	1.47	1.51

All (27) bond angle outliers are listed below:

Mol	Chain	Res	Type	Atoms	Z	Observed(°)	Ideal(°)
3	B	404	VQQ	O-C1-C6	9.63	129.38	115.97
3	B	404	VQQ	C3-C4-CL	-7.65	107.40	119.35
3	B	404	VQQ	C5-C4-CL	6.53	127.31	119.15
3	B	404	VQQ	O-C1-C2	-5.52	114.90	124.37
3	B	404	VQQ	C7-C6-C1	4.70	128.40	121.14
3	B	401	VQQ	C7-C6-C1	4.60	128.24	121.14
3	B	401	VQQ	C3-C4-CL	4.51	126.41	119.35
3	B	401	VQQ	C7-C6-C5	-3.82	111.70	119.41
3	B	404	VQQ	C4-C5-C6	-3.50	115.31	119.98
3	B	403	VQQ	C8-C7-C6	-3.45	105.08	112.93
3	B	404	VQQ	C7-C6-C5	-3.43	112.50	119.41
3	B	401	VQQ	C2-C3-C4	3.09	122.50	119.24
3	B	404	VQQ	C-O-C1	-3.04	112.93	117.53
3	B	401	VQQ	C4-C5-C6	2.98	123.97	119.98
3	B	401	VQQ	C3-C4-C5	-2.92	117.65	121.53
3	B	401	VQQ	C5-C4-CL	-2.91	115.52	119.15
3	B	402	VQQ	C8-C7-C6	-2.83	106.48	112.93
3	B	404	VQQ	C2-C1-C6	-2.67	115.69	120.21
3	B	404	VQQ	C8-C7-C6	-2.59	107.03	112.93
3	B	401	VQQ	C2-C1-C6	-2.55	115.90	120.21
3	B	401	VQQ	C-O-C1	2.50	121.30	117.53
3	B	404	VQQ	C3-C2-C1	2.44	124.71	120.06
3	B	404	VQQ	C3-C4-C5	2.31	124.60	121.53
3	B	402	VQQ	C3-C4-CL	-2.08	116.11	119.35
3	B	401	VQQ	O-C1-C6	2.06	118.85	115.97
3	B	401	VQQ	C8-C7-C6	-2.05	108.25	112.93

Continued on next page...

Continued from previous page...

Mol	Chain	Res	Type	Atoms	Z	Observed(°)	Ideal(°)
3	B	402	VQQ	C4-C5-C6	-2.01	117.31	119.98

There are no chirality outliers.

All (9) torsion outliers are listed below:

Mol	Chain	Res	Type	Atoms
3	B	402	VQQ	C6-C7-C8-N
3	B	402	VQQ	C1-C6-C7-C8
3	B	403	VQQ	C1-C6-C7-C8
3	B	404	VQQ	C1-C6-C7-C8
3	B	404	VQQ	C5-C6-C7-C8
3	B	404	VQQ	C2-C1-O-C
3	B	404	VQQ	C6-C1-O-C
3	B	401	VQQ	C5-C6-C7-C8
3	B	401	VQQ	C1-C6-C7-C8

There are no ring outliers.

1 monomer is involved in 2 short contacts:

Mol	Chain	Res	Type	Clashes	Symm-Clashes
3	B	401	VQQ	2	0

5.7 Other polymers [i](#)

There are no such residues in this entry.

5.8 Polymer linkage issues [i](#)

There are no chain breaks in this entry.

6 Fit of model and data [i](#)

6.1 Protein, DNA and RNA chains [i](#)

In the following table, the column labelled ‘#RSRZ > 2’ contains the number (and percentage) of RSRZ outliers, followed by percent RSRZ outliers for the chain as percentile scores relative to all X-ray entries and entries of similar resolution. The OWAB column contains the minimum, median, 95th percentile and maximum values of the occupancy-weighted average B-factor per residue. The column labelled ‘Q < 0.9’ lists the number of (and percentage) of residues with an average occupancy less than 0.9.

Mol	Chain	Analysed	<RSRZ>	#RSRZ>2	OWAB(Å ²)	Q<0.9
1	A	237/258 (91%)	1.08	29 (12%) 4 3	39, 49, 79, 96	0
2	B	300/308 (97%)	1.66	85 (28%) 0 0	40, 55, 89, 117	0
All	All	537/566 (94%)	1.41	114 (21%) 0 0	39, 52, 85, 117	0

All (114) RSRZ outliers are listed below:

Mol	Chain	Res	Type	RSRZ
2	B	317	LEU	15.3
2	B	316	LEU	11.8
2	B	172	PRO	8.9
2	B	170	SER	8.0
2	B	85	ASP	7.8
2	B	288	VAL	7.5
1	A	1833	GLY	6.9
2	B	314	PRO	6.4
2	B	171	ASP	6.2
1	A	2063	TYR	6.2
2	B	1	MET	5.9
1	A	1962	ARG	5.9
2	B	84	ARG	5.9
1	A	2069	VAL	5.2
2	B	282	ILE	5.1
1	A	2028	SER	5.0
2	B	272	ILE	4.9
2	B	289	TRP	4.9
2	B	315	GLU	4.9
2	B	54[A]	MET	4.8
2	B	174	HIS	4.6
2	B	213	ILE	4.5
1	A	2027	LEU	4.4
1	A	2032	ILE	4.3

Continued on next page...

Continued from previous page...

Mol	Chain	Res	Type	RSRZ
2	B	131	ARG	4.2
1	A	1838	SER	4.1
2	B	173	ALA	4.1
1	A	1837	SER	4.1
2	B	150	ASN	4.0
2	B	254	ALA	4.0
2	B	108	ILE	4.0
2	B	117	LEU	3.9
2	B	101	MET	3.8
2	B	83	GLU	3.8
2	B	311	ASN	3.7
2	B	211[A]	GLN	3.7
2	B	52	SER	3.7
1	A	2066	LYS	3.6
2	B	313	TYR	3.6
2	B	278	GLN	3.6
2	B	285	ASN	3.5
1	A	2065	ARG	3.4
1	A	2046	GLU	3.3
2	B	279	TYR	3.3
2	B	295	SER	3.3
2	B	243	TRP	3.2
1	A	2044	THR	3.2
2	B	283	LEU	3.2
2	B	286	GLU	3.2
2	B	275	LEU	3.1
2	B	43	VAL	3.1
2	B	308	ILE	3.1
2	B	44[A]	ILE	3.0
2	B	109	ASP	3.0
2	B	132	LYS	3.0
2	B	133	ASP	2.9
1	A	2068	ASN	2.9
1	A	1866	PHE	2.8
2	B	96	PHE	2.8
2	B	237	TYR	2.8
2	B	110	GLU	2.8
2	B	281	ASP	2.8
2	B	233	PHE	2.8
1	A	1836	ASN	2.7
2	B	53	SER	2.7
2	B	203[A]	TYR	2.6

Continued on next page...

Continued from previous page...

Mol	Chain	Res	Type	RSRZ
2	B	293	LEU	2.6
2	B	68	TYR	2.6
2	B	228	PHE	2.6
2	B	51	ASN	2.6
2	B	270	TYR	2.6
2	B	181	ILE	2.6
2	B	56	TYR	2.5
2	B	62	CYS	2.5
2	B	50	ASP	2.5
1	A	2049	ILE	2.5
2	B	212[A]	GLY	2.5
2	B	107	LYS	2.5
1	A	1843	LEU	2.5
2	B	114	TRP	2.5
2	B	294	TYR	2.5
2	B	121	VAL	2.5
2	B	147	VAL	2.5
2	B	17	ILE	2.5
2	B	20	TYR	2.4
2	B	91	ASN	2.4
2	B	92	ILE	2.4
2	B	87	ALA	2.4
1	A	1921	VAL	2.4
2	B	41[A]	VAL	2.4
2	B	88	LYS	2.4
2	B	55[A]	ARG	2.4
2	B	148	GLN	2.3
2	B	59	TRP	2.3
1	A	1848	ILE	2.3
1	A	1840	TYR	2.3
1	A	2051	ILE	2.2
2	B	33	ILE	2.2
1	A	1861	THR	2.2
1	A	1872	THR	2.2
2	B	208	VAL	2.2
2	B	309	MET	2.2
1	A	1904	ARG	2.2
1	A	1844	PHE	2.1
2	B	226	PHE	2.1
2	B	291	ILE	2.1
2	B	57	GLY	2.1
2	B	287	ARG	2.1

Continued on next page...

Continued from previous page...

Mol	Chain	Res	Type	RSRZ
1	A	1931[A]	LYS	2.1
2	B	312	LYS	2.1
1	A	1857	VAL	2.1
1	A	1875	ILE	2.0
2	B	180	VAL	2.0
2	B	81	MET	2.0

6.2 Non-standard residues in protein, DNA, RNA chains [i](#)

There are no non-standard protein/DNA/RNA residues in this entry.

6.3 Carbohydrates [i](#)

There are no monosaccharides in this entry.

6.4 Ligands [i](#)

In the following table, the Atoms column lists the number of modelled atoms in the group and the number defined in the chemical component dictionary. The B-factors column lists the minimum, median, 95th percentile and maximum values of B factors of atoms in the group. The column labelled 'Q< 0.9' lists the number of atoms with occupancy less than 0.9.

Mol	Type	Chain	Res	Atoms	RSCC	RSR	B-factors(Å ²)	Q<0.9
3	VQQ	B	401	12/12	0.78	0.22	20,20,20,20	12
3	VQQ	B	402	12/12	0.81	0.23	20,20,20,20	12
3	VQQ	B	403	12/12	0.81	0.35	20,20,20,20	12
3	VQQ	B	404	12/12	0.82	0.19	20,20,20,20	12

6.5 Other polymers [i](#)

There are no such residues in this entry.