



## Full wwPDB EM Validation Report ⓘ

Nov 4, 2024 – 03:39 AM JST

PDB ID : 7DTD  
EMDB ID : EMD-30851  
Title : Voltage-gated sodium channel Nav1.1 and beta4  
Authors : Yan, N.; Pan, X.; Li, Z.; Huang, G.  
Deposited on : 2021-01-04  
Resolution : 3.30 Å (reported)

This is a Full wwPDB EM Validation Report for a publicly released PDB entry.

We welcome your comments at [validation@mail.wwpdb.org](mailto:validation@mail.wwpdb.org)

A user guide is available at

<https://www.wwpdb.org/validation/2017/EMValidationReportHelp>

with specific help available everywhere you see the ⓘ symbol.

The types of validation reports are described at

<http://www.wwpdb.org/validation/2017/FAQs#types>.

---

The following versions of software and data (see [references ⓘ](#)) were used in the production of this report:

EMDB validation analysis : 0.0.1.dev113  
Mogul : 1.8.5 (274361), CSD as541be (2020)  
MolProbity : 4.02b-467  
buster-report : 1.1.7 (2018)  
Percentile statistics : 20231227.v01 (using entries in the PDB archive December 27th 2023)  
MapQ : 1.9.13  
Ideal geometry (proteins) : Engh & Huber (2001)  
Ideal geometry (DNA, RNA) : Parkinson et al. (1996)  
Validation Pipeline (wwPDB-VP) : 2.39

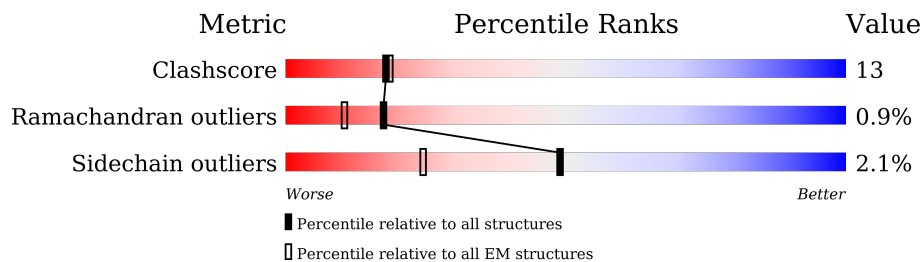
# 1 Overall quality at a glance

The following experimental techniques were used to determine the structure:

*ELECTRON MICROSCOPY*

The reported resolution of this entry is 3.30 Å.

Percentile scores (ranging between 0-100) for global validation metrics of the entry are shown in the following graphic. The table shows the number of entries on which the scores are based.



Metric	Whole archive (#Entries)	EM structures (#Entries)
Clashscore	210492	15764
Ramachandran outliers	207382	16835
Sidechain outliers	206894	16415

The table below summarises the geometric issues observed across the polymeric chains and their fit to the map. The red, orange, yellow and green segments of the bar indicate the fraction of residues that contain outliers for  $\geq 3$ , 2, 1 and 0 types of geometric quality criteria respectively. A grey segment represents the fraction of residues that are not modelled. The numeric value for each fraction is indicated below the corresponding segment, with a dot representing fractions  $\leq 5\%$ . The upper red bar (where present) indicates the fraction of residues that have poor fit to the EM map (all-atom inclusion  $< 40\%$ ). The numeric value is given above the bar.

Mol	Chain	Length	Quality of chain
1	B	228	
2	A	2052	

## 2 Entry composition

There are 4 unique types of molecules in this entry. The entry contains 10190 atoms, of which 0 are hydrogens and 0 are deuteriums.

In the tables below, the AltConf column contains the number of residues with at least one atom in alternate conformation and the Trace column contains the number of residues modelled with at most 2 atoms.

- Molecule 1 is a protein called Sodium channel subunit beta-4.

Mol	Chain	Residues	Atoms					AltConf	Trace
			Total	C	N	O	S		
1	B	111	903	576	146	178	3	5	0

- Molecule 2 is a protein called Sodium channel protein type 1 subunit alpha.

Mol	Chain	Residues	Atoms					AltConf	Trace
			Total	C	N	O	S		
2	A	1138	9192	6097	1446	1574	75	0	0

There are 43 discrepancies between the modelled and reference sequences:

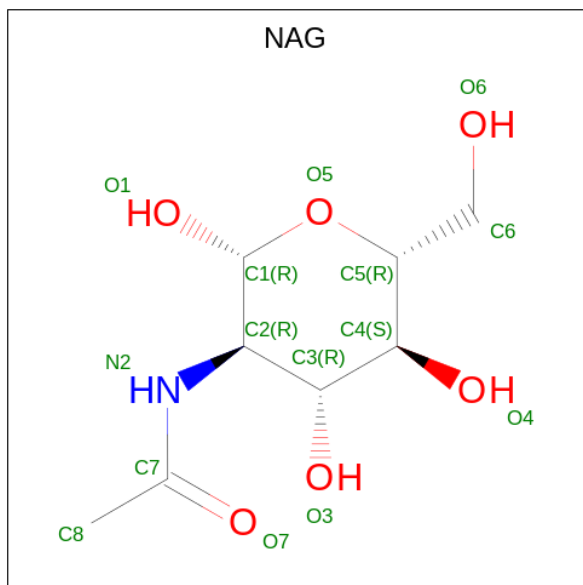
Chain	Residue	Modelled	Actual	Comment	Reference
A	-42	MET	-	initiating methionine	UNP P35498
A	-41	ALA	-	expression tag	UNP P35498
A	-40	SER	-	expression tag	UNP P35498
A	-39	TRP	-	expression tag	UNP P35498
A	-38	SER	-	expression tag	UNP P35498
A	-37	HIS	-	expression tag	UNP P35498
A	-36	PRO	-	expression tag	UNP P35498
A	-35	GLN	-	expression tag	UNP P35498
A	-34	PHE	-	expression tag	UNP P35498
A	-33	GLU	-	expression tag	UNP P35498
A	-32	LYS	-	expression tag	UNP P35498
A	-31	GLY	-	expression tag	UNP P35498
A	-30	GLY	-	expression tag	UNP P35498
A	-29	GLY	-	expression tag	UNP P35498
A	-28	ALA	-	expression tag	UNP P35498
A	-27	ARG	-	expression tag	UNP P35498
A	-26	GLY	-	expression tag	UNP P35498
A	-25	GLY	-	expression tag	UNP P35498
A	-24	SER	-	expression tag	UNP P35498
A	-23	GLY	-	expression tag	UNP P35498
A	-22	GLY	-	expression tag	UNP P35498

*Continued on next page...*

Continued from previous page...

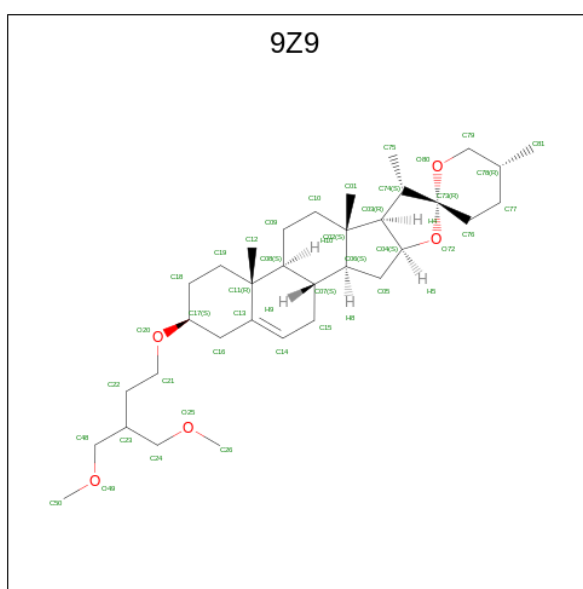
Chain	Residue	Modelled	Actual	Comment	Reference
A	-21	GLY	-	expression tag	UNP P35498
A	-20	SER	-	expression tag	UNP P35498
A	-19	TRP	-	expression tag	UNP P35498
A	-18	SER	-	expression tag	UNP P35498
A	-17	HIS	-	expression tag	UNP P35498
A	-16	PRO	-	expression tag	UNP P35498
A	-15	GLN	-	expression tag	UNP P35498
A	-14	PHE	-	expression tag	UNP P35498
A	-13	GLU	-	expression tag	UNP P35498
A	-12	LYS	-	expression tag	UNP P35498
A	-11	GLY	-	expression tag	UNP P35498
A	-10	PHE	-	expression tag	UNP P35498
A	-9	ASP	-	expression tag	UNP P35498
A	-8	TYR	-	expression tag	UNP P35498
A	-7	LYS	-	expression tag	UNP P35498
A	-6	ASP	-	expression tag	UNP P35498
A	-5	ASP	-	expression tag	UNP P35498
A	-4	ASP	-	expression tag	UNP P35498
A	-3	ASP	-	expression tag	UNP P35498
A	-2	LYS	-	expression tag	UNP P35498
A	-1	GLY	-	expression tag	UNP P35498
A	0	THR	-	expression tag	UNP P35498

- Molecule 3 is 2-acetamido-2-deoxy-beta-D-glucopyranose (three-letter code: NAG) (formula:  $C_8H_{15}NO_6$ ).



Mol	Chain	Residues	Atoms				AltConf
3	A	1	Total	C	N	O	0
			14	8	1	5	
3	A	1	Total	C	N	O	0
			14	8	1	5	
3	A	1	Total	C	N	O	0
			14	8	1	5	
3	A	1	Total	C	N	O	0
			14	8	1	5	

- Molecule 4 is (3beta,14beta,17beta,25R)-3-[4-methoxy-3-(methoxymethyl)butoxy]spirost-5-en (three-letter code: 9Z9) (formula: C<sub>34</sub>H<sub>56</sub>O<sub>5</sub>).



Mol	Chain	Residues	Atoms			AltConf
4	A	1	Total	C	O	0
			39	34	5	





ASP  
ALA  
THR  
GLN  
PHE  
MET  
GLU  
PHE  
GLU  
LEU  
LYS  
GLN  
SER  
GLN  
PHE  
ALA  
ALA  
MET  
ALA  
LEU  
GLU  
PRO  
PRO  
LEU  
ASN  
LEU  
VAL  
SER  
PRO  
GLN  
PRO  
ASN  
LYS  
LEU  
GLN  
LEU  
LEU  
ILE  
ALA  
MET  
ASP  
LEU  
PRO  
MET  
VAL

GLU  
SER  
GLY  
THR  
MET  
ASN  
ALA  
LEU  
ARG  
ILE  
GLN  
MET  
GLU  
GLU  
ARG  
PHE  
MET  
ALA  
SER  
ASN  
PRO  
SER  
LYS  
VAL  
SER  
TYR  
GLN  
PRO  
ASN  
ILE  
THR  
THR  
THR  
LEU  
LEU  
LYS  
ARG  
LYS  
GLN  
GLU  
GLU  
VAL  
VAL  
SER  
SER  
ALA  
VAL  
ILE  
ILE  
HIS  
GLN  
CYS  
ARG  
ALA  
TYR  
ASP  
ARG  
ARG  
HIS  
PHE  
LEU  
PHE  
LEU  
LYS  
ARG  
THR  
VAL  
LEU  
GLN

ALA  
SER  
PHE  
THR  
TYR  
ASN  
LYS  
ASN  
LYS  
ILE  
LYS  
GLY  
GLY  
ALA  
ASN  
LEU  
LEU  
ILE  
LYS  
GLU  
ASP  
ARG  
ILE  
ASN  
GLU  
ASN  
SER  
ILE  
THR  
GLU  
LYS  
THR  
ASP  
LEU  
THR  
MET  
SER  
SER  
THR  
ALA  
ALA  
CYS  
PRO  
SER  
TYR  
ASP  
ARG  
VAL  
VAL  
THR  
LYS  
PRO  
ILE  
VAL  
GLU  
LYS  
HIS

GLU  
GLN  
GLU  
GLY  
LYS  
ASP  
GLU  
LYS  
ALA  
LYS  
GLY  
LYS



## 4 Experimental information

Property	Value	Source
EM reconstruction method	SINGLE PARTICLE	Depositor
Imposed symmetry	POINT, Not provided	
Number of particles used	133127	Depositor
Resolution determination method	FSC 0.143 CUT-OFF	Depositor
CTF correction method	PHASE FLIPPING ONLY	Depositor
Microscope	FEI TITAN KRIOS	Depositor
Voltage (kV)	300	Depositor
Electron dose ( $e^-/\text{\AA}^2$ )	48	Depositor
Minimum defocus (nm)	Not provided	
Maximum defocus (nm)	Not provided	
Magnification	Not provided	
Image detector	GATAN K3 (6k x 4k)	Depositor
Maximum map value	0.162	Depositor
Minimum map value	-0.085	Depositor
Average map value	0.001	Depositor
Map value standard deviation	0.005	Depositor
Recommended contour level	0.017	Depositor
Map size ( $\text{\AA}$ )	219.58, 219.58, 219.58	wwPDB
Map dimensions	200, 200, 200	wwPDB
Map angles ( $^\circ$ )	90.0, 90.0, 90.0	wwPDB
Pixel spacing ( $\text{\AA}$ )	1.0979, 1.0979, 1.0979	Depositor

## 5 Model quality [i](#)

### 5.1 Standard geometry [i](#)

Bond lengths and bond angles in the following residue types are not validated in this section: NAG, 9Z9

The Z score for a bond length (or angle) is the number of standard deviations the observed value is removed from the expected value. A bond length (or angle) with  $|Z| > 5$  is considered an outlier worth inspection. RMSZ is the root-mean-square of all Z scores of the bond lengths (or angles).

Mol	Chain	Bond lengths		Bond angles	
		RMSZ	# Z  >5	RMSZ	# Z  >5
1	B	0.36	0/935	0.57	0/1266
2	A	0.27	0/9421	0.44	0/12773
All	All	0.28	0/10356	0.45	0/14039

There are no bond length outliers.

There are no bond angle outliers.

There are no chirality outliers.

There are no planarity outliers.

### 5.2 Too-close contacts [i](#)

In the following table, the Non-H and H(model) columns list the number of non-hydrogen atoms and hydrogen atoms in the chain respectively. The H(added) column lists the number of hydrogen atoms added and optimized by MolProbity. The Clashes column lists the number of clashes within the asymmetric unit, whereas Symm-Clashes lists symmetry-related clashes.

Mol	Chain	Non-H	H(model)	H(added)	Clashes	Symm-Clashes
1	B	903	0	881	7	0
2	A	9192	0	9339	260	0
3	A	56	0	52	3	0
4	A	39	0	0	4	0
All	All	10190	0	10272	267	0

The all-atom clashscore is defined as the number of clashes found per 1000 atoms (including hydrogen atoms). The all-atom clashscore for this structure is 13.

All (267) close contacts within the same asymmetric unit are listed below, sorted by their clash magnitude.

Atom-1	Atom-2	Interatomic distance (Å)	Clash overlap (Å)
2:A:318:ILE:O	2:A:319:GLN:HG2	1.16	1.26
2:A:1376:CYS:SG	2:A:1408:TRP:CE3	2.45	1.09
2:A:419:LEU:HD23	4:A:2105:9Z9:C01	1.84	1.06
2:A:417:LEU:HD23	2:A:1788:ASN:HD21	1.18	1.05
2:A:1385:PHE:HZ	3:A:2103:NAG:H82	1.22	1.04
2:A:318:ILE:C	2:A:319:GLN:HG2	1.79	1.01
2:A:318:ILE:O	2:A:319:GLN:CG	2.11	0.99
2:A:1376:CYS:SG	2:A:1408:TRP:HE3	1.83	0.98
2:A:790:TYR:HB3	2:A:791:PRO:HD3	1.44	0.97
2:A:426:TYR:OH	2:A:989:ALA:HB2	1.65	0.96
2:A:358:PRO:O	2:A:359:ASN:HB2	1.67	0.94
2:A:244:VAL:HG22	2:A:981:LEU:HD11	1.49	0.94
2:A:834:ILE:HG13	2:A:835:PHE:N	1.78	0.93
2:A:789:HIS:CE1	2:A:792:MET:HG3	2.09	0.88
2:A:336:CYS:HB2	2:A:345:CYS:SG	2.14	0.87
2:A:204:THR:HA	2:A:209:LEU:HD12	1.58	0.86
2:A:1385:PHE:CZ	3:A:2103:NAG:H82	2.10	0.86
2:A:1350:VAL:HG21	2:A:1481:VAL:HG21	1.57	0.85
2:A:790:TYR:HB3	2:A:791:PRO:CD	2.08	0.83
1:B:98:ASP:HB3	1:B:101[A]:ILE:HD13	1.61	0.82
2:A:357:ASN:HB2	2:A:361:GLY:HA2	1.64	0.80
2:A:417:LEU:CD2	2:A:1788:ASN:HD21	1.95	0.80
2:A:320:ASP:OD2	2:A:322:ARG:HB2	1.81	0.79
2:A:790:TYR:CB	2:A:791:PRO:HD3	2.13	0.78
2:A:823:ASP:HB2	2:A:826:TYR:HB3	1.65	0.77
2:A:1376:CYS:HA	2:A:1407:ARG:O	1.84	0.77
2:A:849:LEU:HD23	2:A:851:ASN:H	1.51	0.76
2:A:403:PHE:HA	2:A:406:VAL:HG12	1.69	0.74
2:A:834:ILE:HG13	2:A:835:PHE:H	1.50	0.73
2:A:822:MET:O	2:A:826:TYR:HB3	1.87	0.73
2:A:358:PRO:O	2:A:359:ASN:CB	2.39	0.71
2:A:853:GLU:CG	2:A:854:GLY:H	2.03	0.71
2:A:277:CYS:SG	2:A:336:CYS:HB3	2.31	0.70
2:A:378:LEU:HD23	2:A:384:TRP:HB2	1.73	0.70
2:A:755:LEU:HA	2:A:758:LYS:HE3	1.74	0.70
2:A:919:CYS:HB2	2:A:962:VAL:HG23	1.74	0.69
2:A:253:LEU:HD12	2:A:1656:ILE:HG13	1.75	0.69
2:A:158:GLU:O	2:A:162:THR:HG23	1.92	0.69
2:A:359:ASN:OD1	2:A:957:TRP:CH2	2.47	0.68
2:A:1664:MET:HA	2:A:1667:LEU:HD12	1.75	0.67
2:A:1517:LYS:C	2:A:1518:LYS:HG3	2.16	0.66
2:A:212:VAL:O	2:A:213:SER:HB3	1.97	0.65

*Continued on next page...*

*Continued from previous page...*

Atom-1	Atom-2	Interatomic distance (Å)	Clash overlap (Å)
2:A:280:TRP:HE3	2:A:281:PRO:HD3	1.62	0.65
2:A:204:THR:HA	2:A:209:LEU:CD1	2.26	0.65
2:A:1344:ILE:HG13	2:A:1348:MET:CE	2.27	0.65
2:A:1344:ILE:HG13	2:A:1348:MET:HE2	1.78	0.65
2:A:1523:ILE:HA	2:A:1598:TYR:OH	1.97	0.65
2:A:269:PHE:HA	2:A:272:ASN:HD22	1.61	0.64
2:A:426:TYR:HH	2:A:989:ALA:HB2	1.60	0.64
2:A:1410:ASN:OD1	2:A:1411:VAL:N	2.29	0.64
2:A:403:PHE:HA	2:A:406:VAL:CG1	2.29	0.62
2:A:824:PRO:O	2:A:825:TYR:HB3	2.00	0.62
2:A:1749:GLY:O	2:A:1750:SER:HB2	1.98	0.62
2:A:793:THR:O	2:A:795:HIS:N	2.33	0.61
2:A:419:LEU:CD2	4:A:2105:9Z9:C01	2.72	0.61
2:A:210:GLY:O	2:A:211:ASN:HB2	1.99	0.61
2:A:788:GLU:HA	2:A:792:MET:CE	2.30	0.61
2:A:319:GLN:O	2:A:320:ASP:HB3	1.99	0.61
2:A:331:LEU:HD12	2:A:331:LEU:O	2.01	0.60
2:A:417:LEU:HD13	2:A:1659:LEU:HD13	1.83	0.60
2:A:406:VAL:HG13	2:A:407:ILE:N	2.16	0.60
2:A:849:LEU:HD21	2:A:852:VAL:HG13	1.82	0.60
2:A:1267:MET:HE2	2:A:1268:LEU:HD22	1.84	0.60
2:A:1733:ILE:HD12	2:A:1766:PHE:HE2	1.66	0.59
2:A:244:VAL:HG22	2:A:981:LEU:CD1	2.30	0.59
2:A:327:LEU:HD22	2:A:334:LEU:HB2	1.83	0.59
2:A:1378:ASN:HA	2:A:1405:THR:O	2.02	0.59
2:A:1517:LYS:O	2:A:1518:LYS:HG3	2.03	0.58
2:A:789:HIS:CE1	2:A:792:MET:CG	2.86	0.58
2:A:406:VAL:HG13	2:A:407:ILE:H	1.69	0.58
2:A:1720:ILE:HD11	2:A:1729:LEU:HD12	1.85	0.57
2:A:1482:ILE:HD13	2:A:1485:ASN:HD21	1.68	0.57
2:A:1409:LYS:NZ	2:A:1410:ASN:O	2.37	0.57
2:A:1489:GLN:HE21	2:A:1493:PHE:HZ	1.53	0.57
2:A:793:THR:O	2:A:796:PHE:N	2.28	0.57
2:A:1385:PHE:HZ	3:A:2103:NAG:C8	2.08	0.57
2:A:320:ASP:OD2	2:A:322:ARG:CB	2.53	0.57
2:A:239:ALA:HB1	2:A:429:GLN:HE22	1.71	0.56
2:A:356:ARG:HG3	2:A:357:ASN:H	1.70	0.56
2:A:873:TRP:HD1	2:A:874:PRO:HD2	1.70	0.56
2:A:1600:PHE:HD1	2:A:1606:ILE:HG12	1.70	0.56
2:A:239:ALA:HB1	2:A:429:GLN:NE2	2.20	0.56
2:A:853:GLU:HG3	2:A:854:GLY:H	1.70	0.56

*Continued on next page...*

*Continued from previous page...*

Atom-1	Atom-2	Interatomic distance (Å)	Clash overlap (Å)
2:A:824:PRO:C	2:A:826:TYR:H	2.09	0.55
2:A:841:THR:O	2:A:845:VAL:HG23	2.06	0.55
2:A:858:LEU:HA	2:A:861:PHE:HD2	1.72	0.55
2:A:1774:PHE:O	2:A:1778:VAL:HG23	2.07	0.55
2:A:765:VAL:HG13	2:A:770:VAL:HG11	1.89	0.55
2:A:276:LYS:O	2:A:336:CYS:SG	2.64	0.55
2:A:336:CYS:CB	2:A:345:CYS:SG	2.91	0.55
2:A:332:ASP:O	2:A:333:ALA:HB3	2.05	0.55
2:A:1610:VAL:O	2:A:1614:LEU:HG	2.07	0.54
2:A:156:ASN:O	2:A:160:THR:HG23	2.06	0.54
2:A:429:GLN:O	2:A:433:THR:HG23	2.08	0.54
2:A:1613:ILE:O	2:A:1617:VAL:HG23	2.07	0.54
2:A:1321:LEU:HD12	2:A:1324:LEU:HD11	1.89	0.54
2:A:1545:ILE:O	2:A:1549:ILE:HG12	2.08	0.54
2:A:1606:ILE:O	2:A:1610:VAL:HG23	2.07	0.54
1:B:119:ARG:NH1	1:B:120:ASP:OD2	2.41	0.53
2:A:1206:ASN:HA	2:A:1209:ARG:HD2	1.89	0.53
2:A:170:LEU:HD12	2:A:173:ILE:HD11	1.90	0.53
2:A:1493:PHE:C	2:A:1495:GLY:H	2.11	0.53
2:A:1552:CYS:O	2:A:1556:VAL:HG23	2.08	0.53
2:A:1608:ASP:OD1	2:A:1648:ARG:NH1	2.42	0.53
2:A:1378:ASN:OD1	2:A:1378:ASN:N	2.42	0.53
2:A:823:ASP:HB2	2:A:826:TYR:CB	2.35	0.53
2:A:1290:LEU:O	2:A:1294:VAL:HG23	2.08	0.53
2:A:403:PHE:CA	2:A:406:VAL:HG12	2.39	0.53
2:A:767:ASP:OD1	2:A:768:PRO:HD3	2.08	0.53
2:A:410:GLY:HA2	2:A:414:LEU:HG	1.90	0.52
2:A:139:LEU:O	2:A:143:VAL:HG23	2.09	0.52
2:A:277:CYS:SG	2:A:336:CYS:CB	2.97	0.52
2:A:318:ILE:C	2:A:319:GLN:CG	2.64	0.52
2:A:1372:LYS:HG2	2:A:1446:ASN:C	2.30	0.52
2:A:822:MET:O	2:A:826:TYR:CD2	2.63	0.52
2:A:853:GLU:CG	2:A:854:GLY:N	2.73	0.52
2:A:154:THR:O	2:A:157:VAL:HB	2.10	0.52
2:A:1575:ARG:O	2:A:1579:VAL:HG23	2.09	0.52
2:A:1385:PHE:HB3	2:A:1390:VAL:CG1	2.40	0.52
2:A:359:ASN:OD1	2:A:957:TRP:CZ3	2.62	0.52
2:A:1639:ARG:HH11	2:A:1642:ARG:HH22	1.58	0.51
2:A:790:TYR:CB	2:A:791:PRO:CD	2.69	0.51
2:A:1248:ILE:HG13	2:A:1252:LEU:HD13	1.91	0.51
2:A:374:SER:O	2:A:377:ARG:HG2	2.11	0.51

*Continued on next page...*

*Continued from previous page...*

Atom-1	Atom-2	Interatomic distance (Å)	Clash overlap (Å)
2:A:880:ILE:HA	2:A:883:ILE:HG22	1.92	0.51
2:A:822:MET:O	2:A:826:TYR:HD2	1.93	0.51
2:A:368:PHE:O	2:A:371:ALA:N	2.43	0.51
2:A:1653:ALA:O	2:A:1656:ILE:HG22	2.11	0.51
2:A:1408:TRP:CE3	2:A:1408:TRP:HA	2.46	0.50
2:A:1442:VAL:HG13	2:A:1457:LEU:HA	1.94	0.50
2:A:358:PRO:HD2	2:A:363:THR:O	2.12	0.50
2:A:417:LEU:HD23	2:A:1788:ASN:ND2	2.03	0.50
2:A:356:ARG:HH12	2:A:360:TYR:HA	1.77	0.49
2:A:790:TYR:CG	2:A:791:PRO:HD3	2.47	0.49
2:A:1733:ILE:HG21	2:A:1762:GLY:HA3	1.94	0.49
2:A:912:PHE:HE1	2:A:967:MET:HG2	1.77	0.49
2:A:1296:LEU:O	2:A:1300:THR:HG23	2.13	0.49
2:A:174:ILE:O	2:A:178:PHE:HB3	2.13	0.49
2:A:1632:PRO:O	2:A:1636:ARG:HG2	2.13	0.49
2:A:852:VAL:HB	2:A:855:LEU:HB3	1.94	0.49
2:A:1776:VAL:O	2:A:1780:MET:HG3	2.13	0.49
2:A:1385:PHE:HB3	2:A:1390:VAL:HG12	1.95	0.48
2:A:788:GLU:HA	2:A:792:MET:HE3	1.94	0.48
2:A:1781:TYR:CE2	4:A:2105:9Z9:C77	2.96	0.48
2:A:133:LEU:O	2:A:137:THR:HG23	2.14	0.48
2:A:1210:THR:O	2:A:1214:ILE:HG12	2.13	0.48
2:A:831:GLY:O	2:A:834:ILE:HG12	2.13	0.48
2:A:991:LEU:HD23	2:A:992:LEU:HD12	1.96	0.48
2:A:991:LEU:HG	2:A:995:PHE:HE1	1.78	0.48
2:A:319:GLN:C	2:A:321:SER:H	2.15	0.48
2:A:1733:ILE:HD12	2:A:1766:PHE:CE2	2.49	0.48
2:A:152:ASP:OD1	2:A:153:TRP:N	2.47	0.48
2:A:167:PHE:O	2:A:171:ILE:HG12	2.13	0.48
2:A:834:ILE:CG1	2:A:835:PHE:N	2.65	0.48
2:A:1407:ARG:CZ	2:A:1739:PRO:HG2	2.43	0.48
2:A:325:TYR:HD2	2:A:334:LEU:HD23	1.79	0.47
2:A:367:THR:O	2:A:368:PHE:C	2.51	0.47
2:A:367:THR:O	2:A:369:SER:N	2.47	0.47
2:A:1393:HIS:CE1	2:A:1397:LEU:CD2	2.97	0.47
2:A:318:ILE:HB	2:A:354:ALA:CB	2.44	0.47
2:A:1525:ARG:HG2	2:A:1526:PRO:O	2.15	0.47
2:A:359:ASN:ND2	2:A:363:THR:OG1	2.48	0.47
2:A:1377:ILE:HB	2:A:1383:ASP:O	2.14	0.47
2:A:1696:LYS:N	2:A:1755:ASP:O	2.48	0.47
2:A:1588:CYS:O	2:A:1592:LEU:HG	2.16	0.46

*Continued on next page...*

*Continued from previous page...*

Atom-1	Atom-2	Interatomic distance (Å)	Clash overlap (Å)
2:A:403:PHE:O	2:A:406:VAL:CG1	2.64	0.46
2:A:1521:LYS:N	2:A:1522:PRO:HD3	2.31	0.46
2:A:789:HIS:H	2:A:792:MET:HE3	1.80	0.46
2:A:203:VAL:HG12	2:A:209:LEU:HD11	1.96	0.46
2:A:1701:ILE:HG23	2:A:1706:ASN:HB3	1.97	0.46
2:A:185:PHE:CG	2:A:185:PHE:O	2.69	0.46
2:A:381:GLN:HE21	2:A:411:SER:HB3	1.80	0.46
2:A:1498:ILE:O	2:A:1499:PHE:HB2	2.16	0.46
2:A:1404:GLU:HG3	2:A:1405:THR:H	1.80	0.46
2:A:356:ARG:HH12	2:A:360:TYR:CA	2.28	0.46
2:A:1270:LYS:O	2:A:1274:TYR:HB2	2.16	0.46
2:A:229:VAL:O	2:A:231:PRO:N	2.49	0.46
2:A:335:LEU:HD13	2:A:390:LEU:HD22	1.98	0.46
2:A:1635:PHE:HA	2:A:1638:ILE:HG12	1.97	0.46
2:A:762:ASN:ND2	2:A:821:ALA:O	2.48	0.45
2:A:853:GLU:CD	2:A:854:GLY:H	2.18	0.45
2:A:1776:VAL:HA	2:A:1779:ASN:ND2	2.31	0.45
2:A:783:LEU:O	2:A:787:MET:HG3	2.17	0.45
2:A:193:LEU:O	2:A:197:VAL:HG13	2.17	0.45
2:A:1383:ASP:CG	2:A:1384:ARG:N	2.70	0.45
2:A:1469:PHE:HA	2:A:1473:PHE:HD2	1.81	0.45
2:A:823:ASP:O	2:A:826:TYR:HB3	2.16	0.45
2:A:1393:HIS:CD2	2:A:1408:TRP:NE1	2.85	0.45
1:B:87:GLU:HG2	1:B:88:LYS:HD2	2.00	0.44
2:A:760:VAL:O	2:A:764:VAL:HG23	2.18	0.44
2:A:867:PHE:HD1	2:A:880:ILE:HD11	1.82	0.44
2:A:327:LEU:HD23	2:A:327:LEU:H	1.81	0.44
2:A:1475:LEU:O	2:A:1479:ILE:HG12	2.17	0.44
2:A:1636:ARG:HG2	2:A:1636:ARG:H	1.67	0.44
1:B:81[A]:GLU:HB2	1:B:95:LEU:HB3	1.99	0.44
2:A:1315:LEU:HA	2:A:1318:LEU:HD23	2.00	0.44
2:A:1682:PHE:CE2	2:A:1686:ILE:HD11	2.53	0.44
2:A:773:ALA:HA	2:A:776:ILE:HG12	1.99	0.44
2:A:216:ARG:O	2:A:219:ARG:HG2	2.17	0.44
2:A:226:THR:O	2:A:230:ILE:HG12	2.18	0.44
2:A:251:MET:HA	2:A:254:THR:HG22	2.00	0.44
2:A:1208:ARG:HA	2:A:1211:CYS:SG	2.58	0.44
2:A:1259:PHE:HA	2:A:1262:ILE:HG22	1.99	0.44
2:A:758:LYS:HA	2:A:761:VAL:HG12	1.99	0.43
2:A:790:TYR:CD1	2:A:790:TYR:C	2.90	0.43
2:A:825:TYR:O	2:A:825:TYR:CD2	2.70	0.43

*Continued on next page...*

Continued from previous page...

Atom-1	Atom-2	Interatomic distance (Å)	Clash overlap (Å)
2:A:1366:VAL:HG22	2:A:1415:PHE:O	2.18	0.43
2:A:1393:HIS:CE1	2:A:1397:LEU:HD23	2.53	0.43
2:A:315:LYS:HA	2:A:315:LYS:HD3	1.75	0.43
2:A:335:LEU:HD23	2:A:394:ALA:HB2	2.00	0.43
2:A:403:PHE:O	2:A:406:VAL:HG12	2.18	0.43
2:A:755:LEU:HA	2:A:758:LYS:HG2	1.99	0.43
2:A:1493:PHE:CD1	2:A:1493:PHE:N	2.86	0.43
2:A:273:LEU:HD12	2:A:364:SER:HA	1.99	0.43
2:A:1393:HIS:CD2	2:A:1408:TRP:HE1	2.36	0.43
2:A:1409:LYS:HG2	2:A:1410:ASN:N	2.34	0.43
2:A:1410:ASN:HD21	2:A:1414:ASN:ND2	2.17	0.43
2:A:1711:GLY:O	2:A:1715:ILE:HG23	2.19	0.43
2:A:336:CYS:SG	2:A:337:GLY:N	2.91	0.43
2:A:1428:VAL:HA	2:A:1434:TRP:HB3	2.01	0.43
2:A:1434:TRP:HE3	2:A:1438:MET:HE3	1.84	0.43
2:A:251:MET:O	2:A:255:VAL:HG22	2.20	0.42
2:A:793:THR:O	2:A:794:ASP:C	2.57	0.42
2:A:1372:LYS:HG2	2:A:1447:VAL:N	2.34	0.42
2:A:1376:CYS:O	2:A:1385:PHE:HB2	2.19	0.42
2:A:325:TYR:CD2	2:A:334:LEU:HD23	2.54	0.42
2:A:1789:PHE:HE2	4:A:2105:9Z9:C16	2.32	0.42
2:A:150:PRO:HA	2:A:151:PRO:HD3	1.92	0.42
2:A:824:PRO:C	2:A:826:TYR:N	2.73	0.42
2:A:217:THR:O	2:A:220:VAL:HG22	2.20	0.42
2:A:368:PHE:O	2:A:369:SER:C	2.58	0.42
2:A:1491:LYS:HB3	2:A:1491:LYS:HE2	1.83	0.42
2:A:862:ARG:O	2:A:865:ARG:HG2	2.20	0.42
2:A:1377:ILE:CB	2:A:1383:ASP:O	2.67	0.42
2:A:1453:TYR:CE1	2:A:1454:GLU:HG3	2.55	0.42
1:B:81[B]:GLU:HB2	1:B:95:LEU:HB3	2.01	0.42
2:A:1446:ASN:OD1	2:A:1447:VAL:N	2.50	0.42
2:A:1660:LEU:HD23	2:A:1660:LEU:HA	1.88	0.42
2:A:1399:LEU:HD23	2:A:1399:LEU:HA	1.89	0.41
2:A:1485:ASN:OD1	2:A:1486:PHE:N	2.53	0.41
1:B:40:ASP:C	1:B:41:ILE:HG12	2.41	0.41
2:A:1453:TYR:CD1	2:A:1454:GLU:HG3	2.56	0.41
2:A:381:GLN:NE2	2:A:411:SER:HB3	2.35	0.41
2:A:1585:THR:O	2:A:1589:VAL:HG12	2.20	0.41
2:A:1702:ASP:N	2:A:1702:ASP:OD1	2.53	0.41
2:A:1237:PHE:HB2	2:A:1252:LEU:HD21	2.02	0.41
1:B:53:CYS:HB2	1:B:68:TRP:CZ2	2.56	0.41

Continued on next page...



Continued from previous page...

Atom-1	Atom-2	Interatomic distance (Å)	Clash overlap (Å)
2:A:823:ASP:CB	2:A:826:TYR:HB3	2.44	0.41
2:A:219:ARG:O	2:A:222:ARG:HG2	2.21	0.41
2:A:765:VAL:HG13	2:A:770:VAL:CG1	2.51	0.41
2:A:1442:VAL:HG21	2:A:1460:TYR:CE2	2.56	0.41
2:A:1770:ILE:HD13	2:A:1770:ILE:HA	1.90	0.41
2:A:185:PHE:O	2:A:186:LEU:HD22	2.20	0.41
2:A:278:ILE:HD12	2:A:318:ILE:HG22	2.03	0.41
2:A:793:THR:C	2:A:795:HIS:N	2.73	0.41
2:A:831:GLY:O	2:A:834:ILE:CG1	2.68	0.41
2:A:1223:PHE:CE2	2:A:1262:ILE:HD11	2.56	0.41
2:A:1362:SER:O	2:A:1366:VAL:HG23	2.20	0.41
2:A:1747:ASN:HA	2:A:1748:PRO:HD3	1.70	0.41
2:A:203:VAL:CG1	2:A:209:LEU:HD11	2.51	0.41
2:A:1289:PHE:O	2:A:1292:VAL:HG12	2.21	0.41
2:A:406:VAL:CG1	2:A:407:ILE:N	2.84	0.40
2:A:334:LEU:HD11	2:A:393:ARG:NH1	2.37	0.40
2:A:791:PRO:O	2:A:792:MET:HB2	2.21	0.40
2:A:853:GLU:HG3	2:A:854:GLY:N	2.33	0.40
2:A:1700:GLY:HA3	2:A:1728:GLY:O	2.21	0.40
2:A:1773:SER:O	2:A:1777:VAL:HG13	2.21	0.40

There are no symmetry-related clashes.

## 5.3 Torsion angles [i](#)

### 5.3.1 Protein backbone [i](#)

In the following table, the Percentiles column shows the percent Ramachandran outliers of the chain as a percentile score with respect to all PDB entries followed by that with respect to all EM entries.

The Analysed column shows the number of residues for which the backbone conformation was analysed, and the total number of residues.

Mol	Chain	Analysed	Favoured	Allowed	Outliers	Percentiles	
1	B	112/228 (49%)	110 (98%)	2 (2%)	0	100	100
2	A	1130/2052 (55%)	1025 (91%)	94 (8%)	11 (1%)	13	42
All	All	1242/2280 (54%)	1135 (91%)	96 (8%)	11 (1%)	17	44

All (11) Ramachandran outliers are listed below:

Mol	Chain	Res	Type
2	A	368	PHE
2	A	791	PRO
2	A	359	ASN
2	A	794	ASP
2	A	319	GLN
2	A	823	ASP
2	A	853	GLU
2	A	332	ASP
2	A	790	TYR
2	A	792	MET
2	A	1524	PRO

### 5.3.2 Protein sidechains [i](#)

In the following table, the Percentiles column shows the percent sidechain outliers of the chain as a percentile score with respect to all PDB entries followed by that with respect to all EM entries.

The Analysed column shows the number of residues for which the sidechain conformation was analysed, and the total number of residues.

Mol	Chain	Analysed	Rotameric	Outliers	Percentiles
1	B	106/200 (53%)	104 (98%)	2 (2%)	52 72
2	A	1013/1824 (56%)	992 (98%)	21 (2%)	48 70
All	All	1119/2024 (55%)	1096 (98%)	23 (2%)	49 70

All (23) residues with a non-rotameric sidechain are listed below:

Mol	Chain	Res	Type
1	B	39	THR
1	B	40	ASP
2	A	154	THR
2	A	202	TYR
2	A	203	VAL
2	A	205	GLU
2	A	277	CYS
2	A	319	GLN
2	A	320	ASP
2	A	321	SER
2	A	385	GLU
2	A	426	TYR
2	A	777	CYS

*Continued on next page...*

*Continued from previous page...*

Mol	Chain	Res	Type
2	A	784	PHE
2	A	793	THR
2	A	834	ILE
2	A	853	GLU
2	A	862	ARG
2	A	918	ASP
2	A	1367	ASN
2	A	1385	PHE
2	A	1405	THR
2	A	1751	SER

Sometimes sidechains can be flipped to improve hydrogen bonding and reduce clashes. All (17) such sidechains are listed below:

Mol	Chain	Res	Type
2	A	191	ASN
2	A	211	ASN
2	A	272	ASN
2	A	359	ASN
2	A	381	GLN
2	A	416	ASN
2	A	429	GLN
2	A	789	HIS
2	A	933	HIS
2	A	980	ASN
2	A	985	ASN
2	A	1217	HIS
2	A	1393	HIS
2	A	1414	ASN
2	A	1496	GLN
2	A	1554	ASN
2	A	1788	ASN

### 5.3.3 RNA [i](#)

There are no RNA molecules in this entry.

### 5.4 Non-standard residues in protein, DNA, RNA chains [i](#)

There are no non-standard protein/DNA/RNA residues in this entry.

## 5.5 Carbohydrates [i](#)

There are no oligosaccharides in this entry.

## 5.6 Ligand geometry [i](#)

5 ligands are modelled in this entry.

In the following table, the Counts columns list the number of bonds (or angles) for which Mogul statistics could be retrieved, the number of bonds (or angles) that are observed in the model and the number of bonds (or angles) that are defined in the Chemical Component Dictionary. The Link column lists molecule types, if any, to which the group is linked. The Z score for a bond length (or angle) is the number of standard deviations the observed value is removed from the expected value. A bond length (or angle) with  $|Z| > 2$  is considered an outlier worth inspection. RMSZ is the root-mean-square of all Z scores of the bond lengths (or angles).

Mol	Type	Chain	Res	Link	Bond lengths			Bond angles		
					Counts	RMSZ	# Z  > 2	Counts	RMSZ	# Z  > 2
4	9Z9	A	2105	-	44,44,44	0.63	2 (4%)	66,68,68	1.03	4 (6%)
3	NAG	A	2101	2	14,14,15	0.28	0	17,19,21	0.59	0
3	NAG	A	2104	2	14,14,15	0.24	0	17,19,21	0.42	0
3	NAG	A	2103	2	14,14,15	0.50	0	17,19,21	0.63	1 (5%)
3	NAG	A	2102	2	14,14,15	0.17	0	17,19,21	0.38	0

In the following table, the Chirals column lists the number of chiral outliers, the number of chiral centers analysed, the number of these observed in the model and the number defined in the Chemical Component Dictionary. Similar counts are reported in the Torsion and Rings columns. '-' means no outliers of that kind were identified.

Mol	Type	Chain	Res	Link	Chirals	Torsions	Rings
4	9Z9	A	2105	-	-	8/12/100/100	0/6/6/6
3	NAG	A	2101	2	-	3/6/23/26	0/1/1/1
3	NAG	A	2104	2	-	2/6/23/26	0/1/1/1
3	NAG	A	2103	2	-	4/6/23/26	0/1/1/1
3	NAG	A	2102	2	-	2/6/23/26	0/1/1/1

All (2) bond length outliers are listed below:

Mol	Chain	Res	Type	Atoms	Z	Observed(Å)	Ideal(Å)
4	A	2105	9Z9	O80-C79	-2.04	1.40	1.43
4	A	2105	9Z9	O72-C04	-2.02	1.39	1.43

All (5) bond angle outliers are listed below:

Mol	Chain	Res	Type	Atoms	Z	Observed(°)	Ideal(°)
4	A	2105	9Z9	O80-C73-C76	4.59	115.04	110.77
4	A	2105	9Z9	C77-C78-C79	3.09	112.85	108.56
4	A	2105	9Z9	C79-O80-C73	2.38	118.23	113.72
3	A	2103	NAG	C1-O5-C5	2.17	115.14	112.19
4	A	2105	9Z9	O80-C73-O72	-2.02	104.14	109.78

There are no chirality outliers.

All (19) torsion outliers are listed below:

Mol	Chain	Res	Type	Atoms
4	A	2105	9Z9	C22-C21-O20-C17
4	A	2105	9Z9	C48-C23-C24-O25
4	A	2105	9Z9	C24-C23-C48-O49
3	A	2103	NAG	O5-C5-C6-O6
3	A	2104	NAG	O5-C5-C6-O6
3	A	2103	NAG	C4-C5-C6-O6
3	A	2102	NAG	O5-C5-C6-O6
3	A	2104	NAG	C4-C5-C6-O6
3	A	2101	NAG	O5-C5-C6-O6
3	A	2101	NAG	C4-C5-C6-O6
4	A	2105	9Z9	C21-C22-C23-C24
4	A	2105	9Z9	O20-C21-C22-C23
4	A	2105	9Z9	C22-C23-C24-O25
4	A	2105	9Z9	C22-C23-C48-O49
3	A	2102	NAG	C4-C5-C6-O6
4	A	2105	9Z9	C23-C24-O25-C26
3	A	2103	NAG	C1-C2-N2-C7
3	A	2101	NAG	C3-C2-N2-C7
3	A	2103	NAG	C3-C2-N2-C7

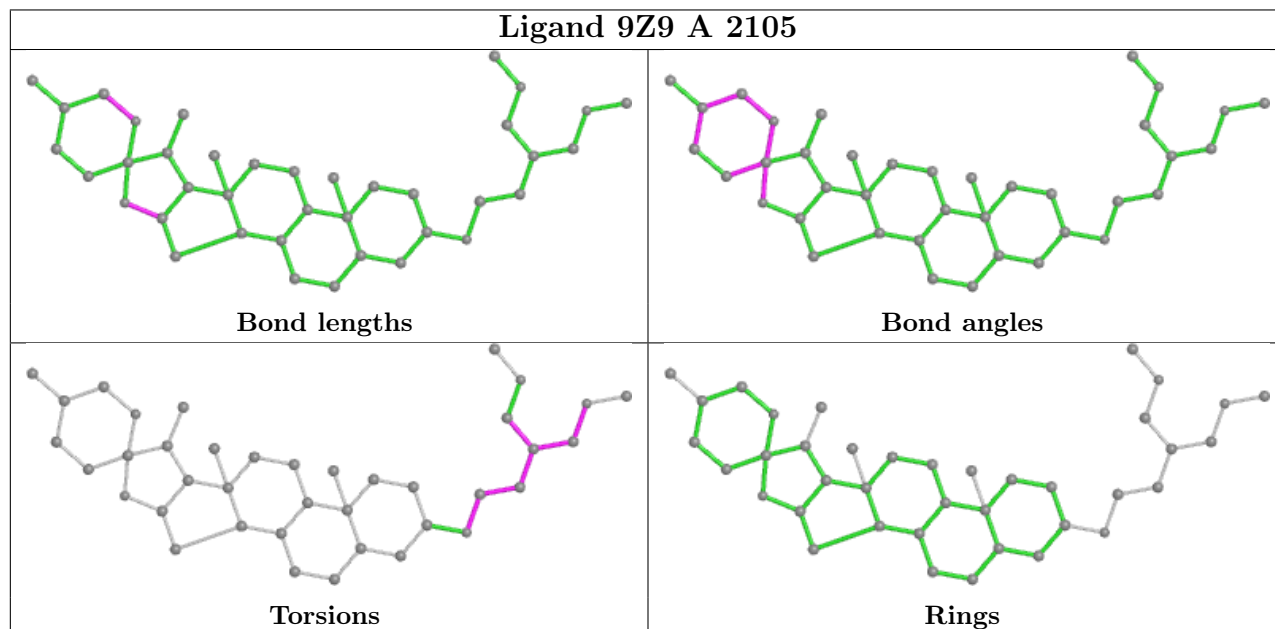
There are no ring outliers.

2 monomers are involved in 7 short contacts:

Mol	Chain	Res	Type	Clashes	Symm-Clashes
4	A	2105	9Z9	4	0
3	A	2103	NAG	3	0

The following is a two-dimensional graphical depiction of Mogul quality analysis of bond lengths, bond angles, torsion angles, and ring geometry for all instances of the Ligand of Interest. In addition, ligands with molecular weight > 250 and outliers as shown on the validation Tables will also be included. For torsion angles, if less than 5% of the Mogul distribution of torsion angles is within 10 degrees of the torsion angle in question, then that torsion angle is considered an outlier. Any bond that is central to one or more torsion angles identified as an outlier by Mogul will be

highlighted in the graph. For rings, the root-mean-square deviation (RMSD) between the ring in question and similar rings identified by Mogul is calculated over all ring torsion angles. If the average RMSD is greater than 60 degrees and the minimal RMSD between the ring in question and any Mogul-identified rings is also greater than 60 degrees, then that ring is considered an outlier. The outliers are highlighted in purple. The color gray indicates Mogul did not find sufficient equivalents in the CSD to analyse the geometry.



## 5.7 Other polymers [i](#)

There are no such residues in this entry.

## 5.8 Polymer linkage issues [i](#)

There are no chain breaks in this entry.

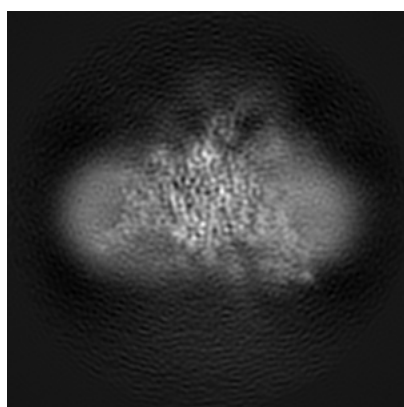
## 6 Map visualisation [i](#)

This section contains visualisations of the EMDB entry EMD-30851. These allow visual inspection of the internal detail of the map and identification of artifacts.

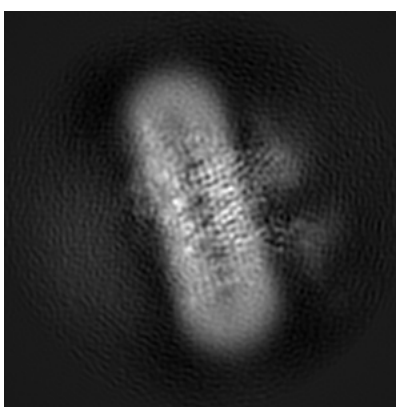
No raw map or half-maps were deposited for this entry and therefore no images, graphs, etc. pertaining to the raw map can be shown.

### 6.1 Orthogonal projections [i](#)

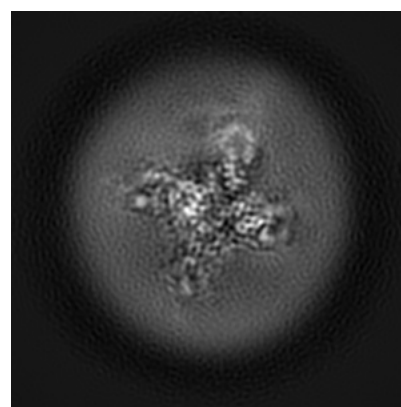
#### 6.1.1 Primary map



X



Y

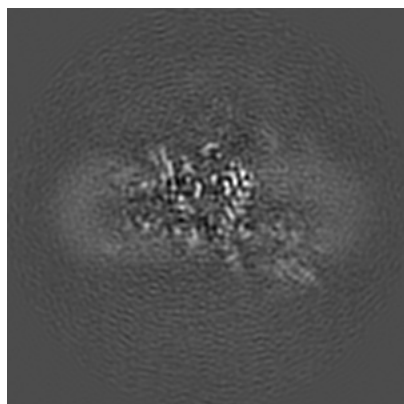


Z

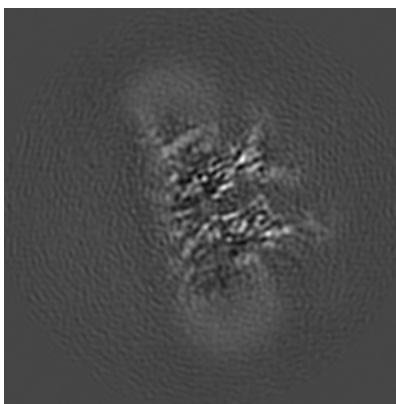
The images above show the map projected in three orthogonal directions.

### 6.2 Central slices [i](#)

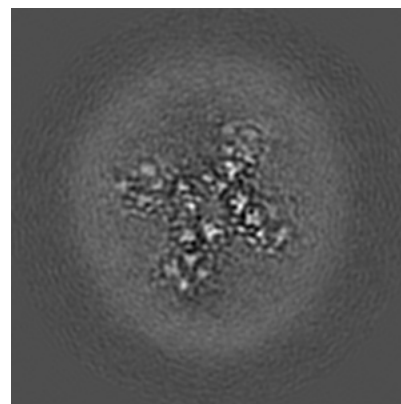
#### 6.2.1 Primary map



X Index: 100



Y Index: 100

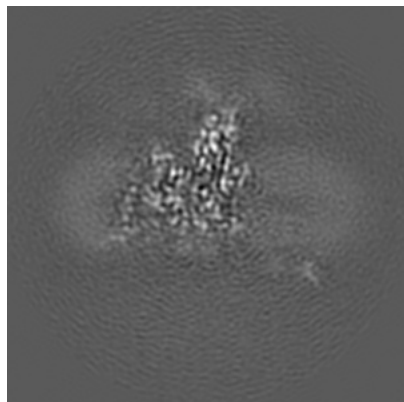


Z Index: 100

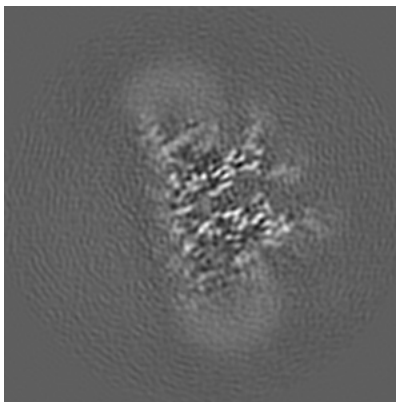
The images above show central slices of the map in three orthogonal directions.

## 6.3 Largest variance slices [i](#)

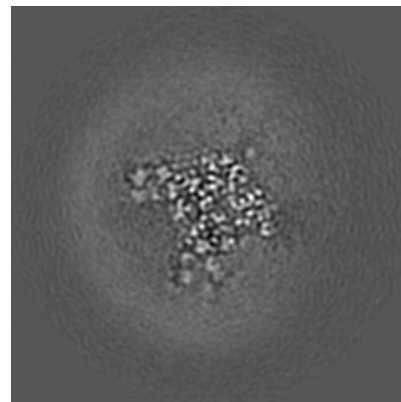
### 6.3.1 Primary map



X Index: 90



Y Index: 101

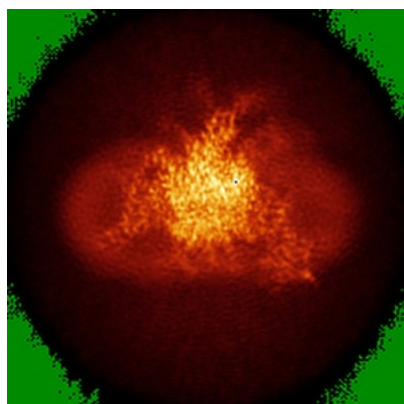


Z Index: 112

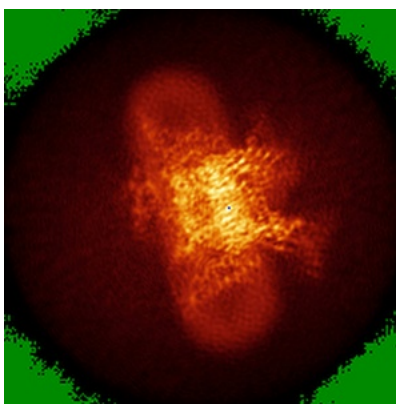
The images above show the largest variance slices of the map in three orthogonal directions.

## 6.4 Orthogonal standard-deviation projections (False-color) [i](#)

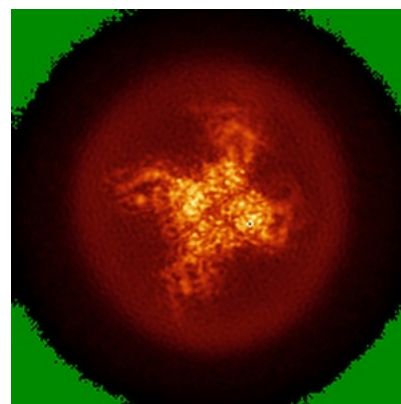
### 6.4.1 Primary map



X



Y



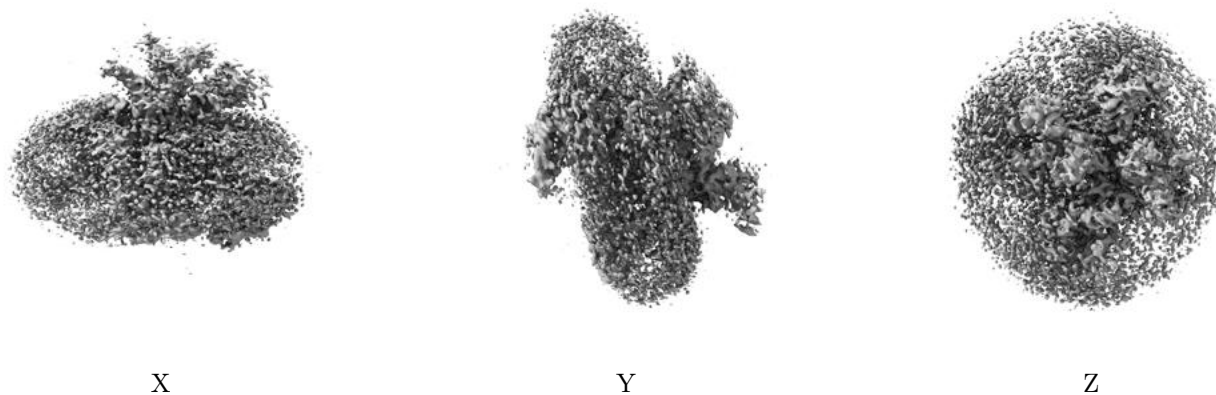
Z

The images above show the map standard deviation projections with false color in three orthogonal directions. Minimum values are shown in green, max in blue, and dark to light orange shades represent small to large values respectively.



## 6.5 Orthogonal surface views [i](#)

### 6.5.1 Primary map



The images above show the 3D surface view of the map at the recommended contour level 0.017. These images, in conjunction with the slice images, may facilitate assessment of whether an appropriate contour level has been provided.

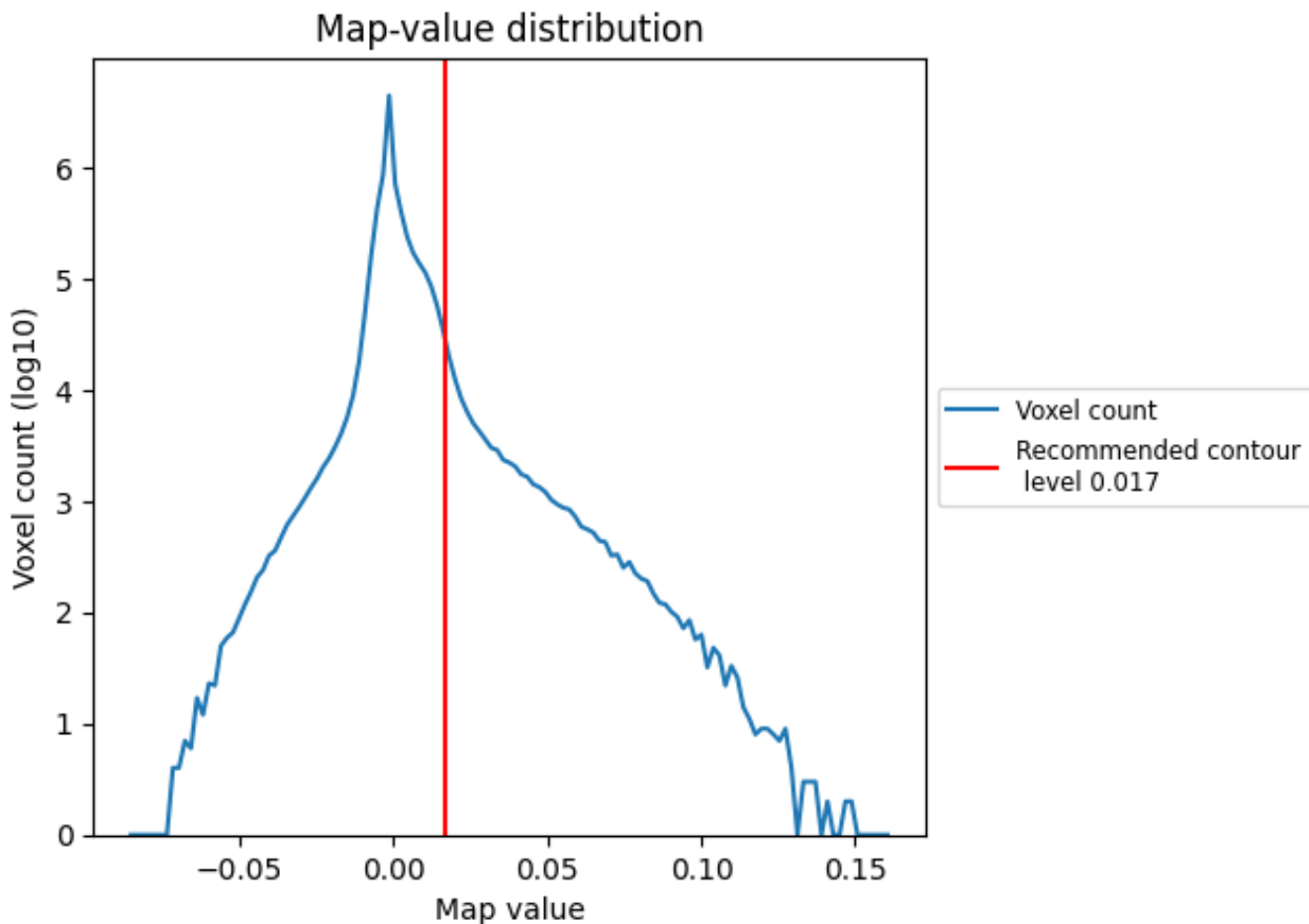
## 6.6 Mask visualisation [i](#)

This section was not generated. No masks/segmentation were deposited.

## 7 Map analysis [i](#)

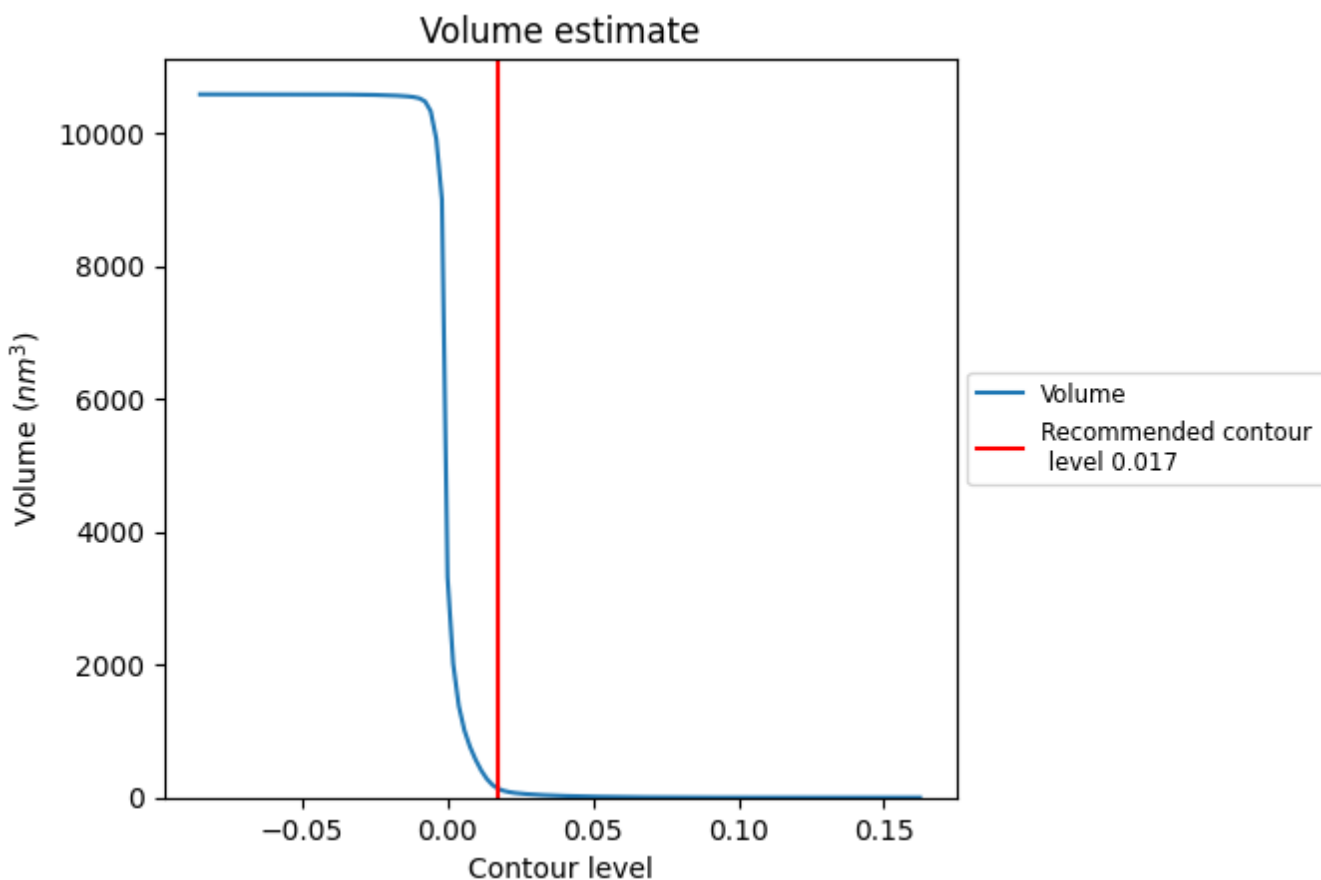
This section contains the results of statistical analysis of the map.

### 7.1 Map-value distribution [i](#)



The map-value distribution is plotted in 128 intervals along the x-axis. The y-axis is logarithmic. A spike in this graph at zero usually indicates that the volume has been masked.

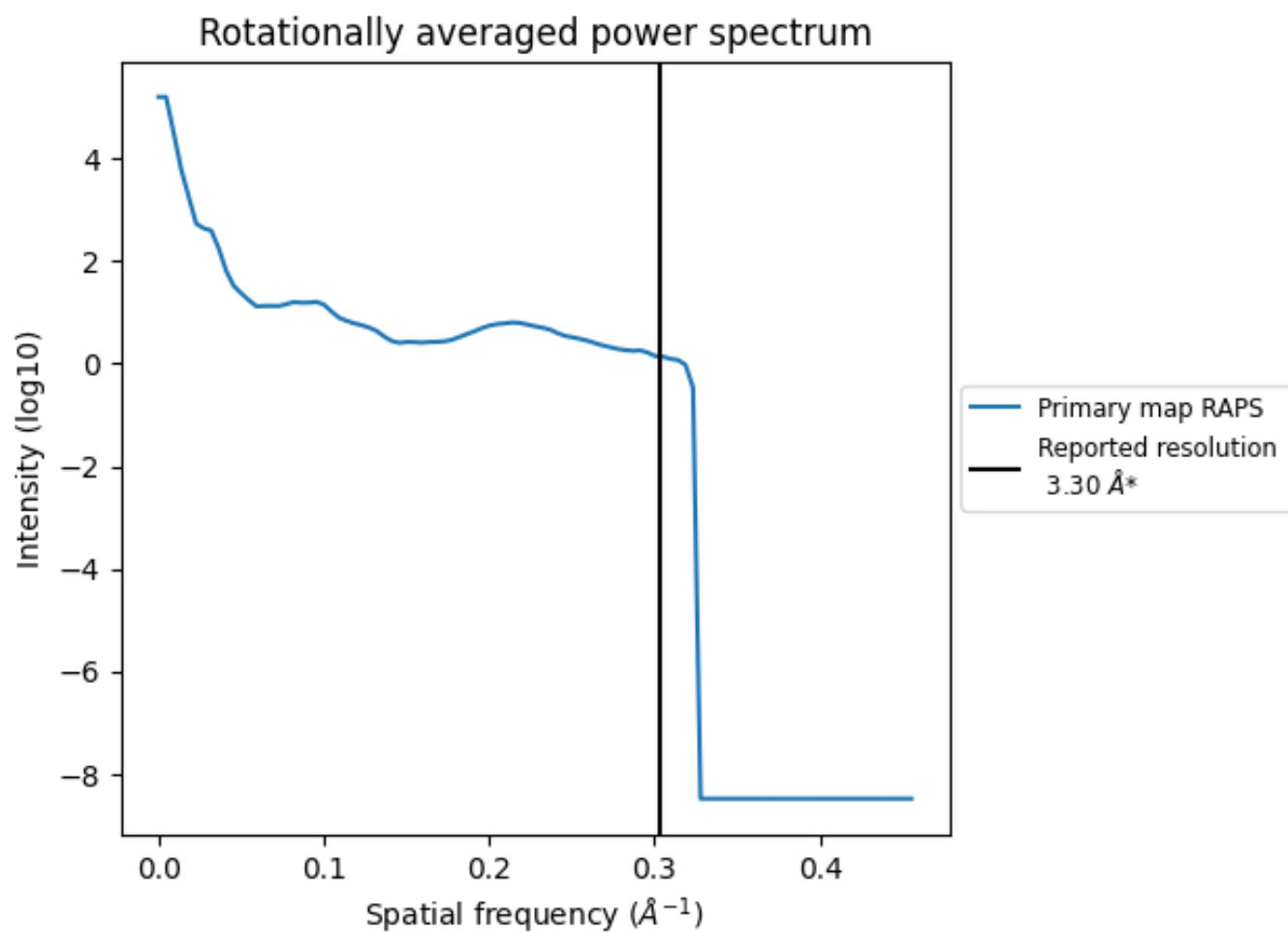
## 7.2 Volume estimate [i](#)



The volume at the recommended contour level is 143 nm<sup>3</sup>; this corresponds to an approximate mass of 129 kDa.

The volume estimate graph shows how the enclosed volume varies with the contour level. The recommended contour level is shown as a vertical line and the intersection between the line and the curve gives the volume of the enclosed surface at the given level.

### 7.3 Rotationally averaged power spectrum [i](#)



\*Reported resolution corresponds to spatial frequency of 0.303 Å<sup>-1</sup>

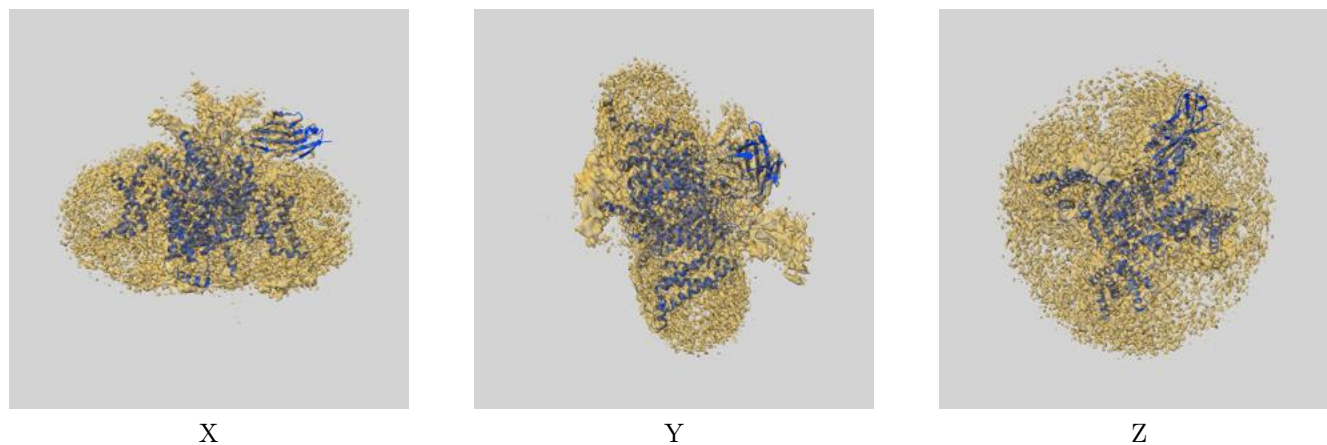
## 8 Fourier-Shell correlation

This section was not generated. No FSC curve or half-maps provided.

## 9 Map-model fit [i](#)

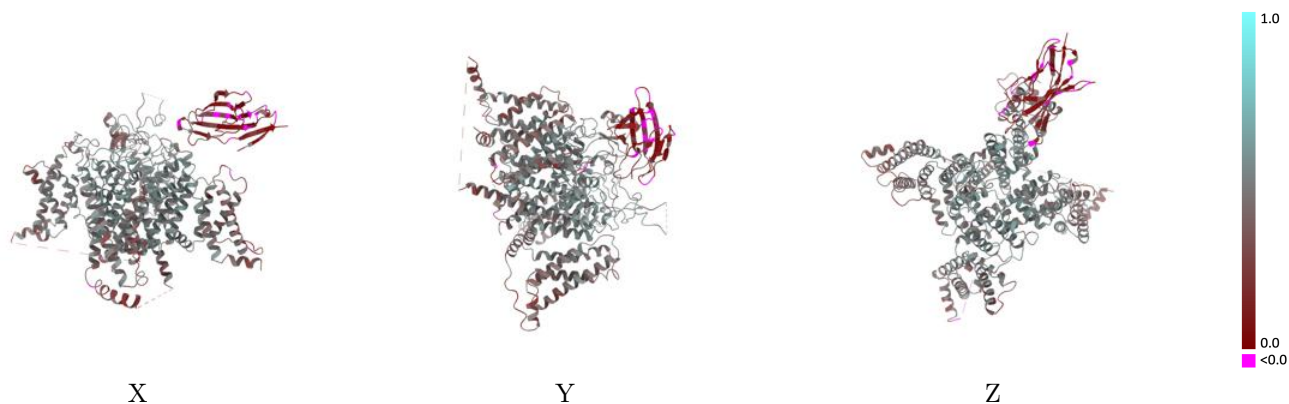
This section contains information regarding the fit between EMDB map EMD-30851 and PDB model 7DTD. Per-residue inclusion information can be found in section [3](#) on page [6](#).

### 9.1 Map-model overlay [i](#)



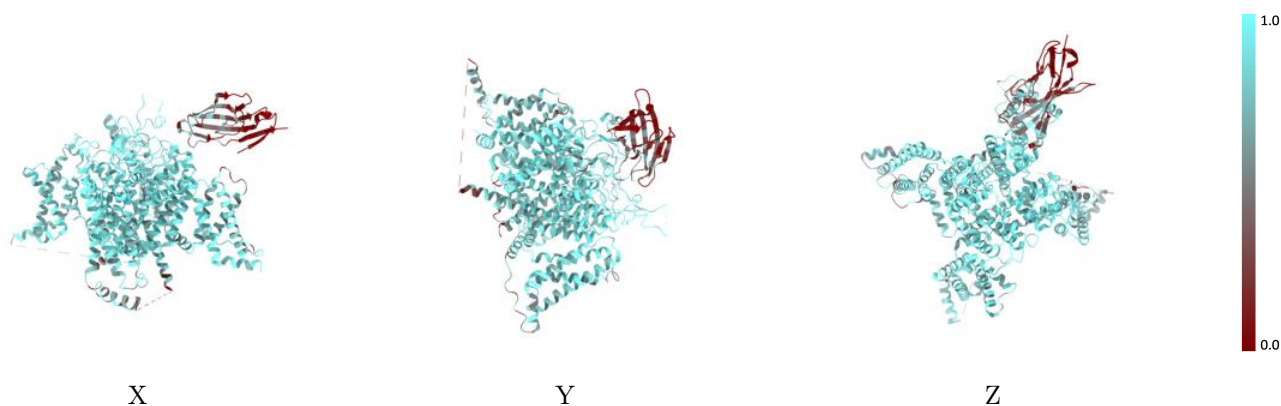
The images above show the 3D surface view of the map at the recommended contour level 0.017 at 50% transparency in yellow overlaid with a ribbon representation of the model coloured in blue. These images allow for the visual assessment of the quality of fit between the atomic model and the map.

## 9.2 Q-score mapped to coordinate model [\(i\)](#)



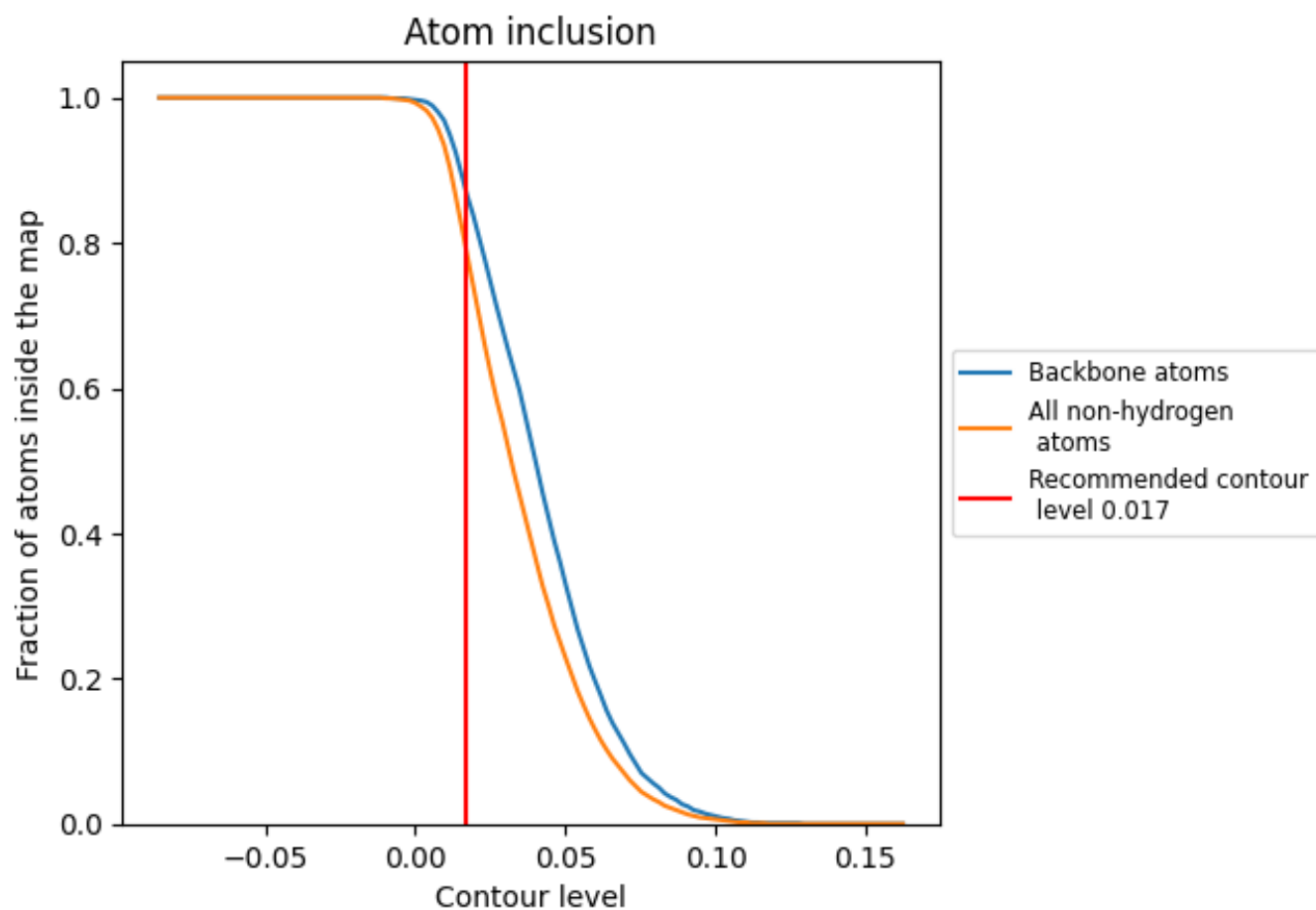
The images above show the model with each residue coloured according to its Q-score. This shows their resolvability in the map with higher Q-score values reflecting better resolvability. Please note: Q-score is calculating the resolvability of atoms, and thus high values are only expected at resolutions at which atoms can be resolved. Low Q-score values may therefore be expected for many entries.

## 9.3 Atom inclusion mapped to coordinate model [\(i\)](#)



The images above show the model with each residue coloured according to its atom inclusion. This shows to what extent they are inside the map at the recommended contour level (0.017).

## 9.4 Atom inclusion [i](#)









At the recommended contour level, 87% of all backbone atoms, 79% of all non-hydrogen atoms, are inside the map.



## 9.5 Map-model fit summary [i](#)

The table lists the average atom inclusion at the recommended contour level (0.017) and Q-score for the entire model and for each chain.

Chain	Atom inclusion	Q-score
All	 0.7900	 0.4280
A	 0.8410	 0.4560
B	 0.2580	 0.1370

