



Full wwPDB X-ray Structure Validation Report ⓘ

Nov 8, 2021 – 09:08 pm GMT

PDB ID : 6YX9
Title : Cryogenic human adiponectin receptor 2 (ADIPOR2) at 2.4 Å resolution determined by Serial Crystallography (SSX) using CrystalDirect
Authors : Healey, R.D.; Basu, S.; Humm, A.S.; Leyrat, C.; Dupeux, F.; Pica, A.; Granier, S.; Marquez, J.A.
Deposited on : 2020-04-30
Resolution : 2.40 Å (reported)

This is a Full wwPDB X-ray Structure Validation Report for a publicly released PDB entry.

We welcome your comments at validation@mail.wwpdb.org

A user guide is available at

<https://www.wwpdb.org/validation/2017/XrayValidationReportHelp>

with specific help available everywhere you see the ⓘ symbol.

The following versions of software and data (see [references ⓘ](#)) were used in the production of this report:

MolProbity : 4.02b-467
Mogul : 1.8.4 (270009), CSD as541be (2020)
Xtriage (Phenix) : 1.13
EDS : 2.23.2
buster-report : 1.1.7 (2018)
Percentile statistics : 20191225.v01 (using entries in the PDB archive December 25th 2019)
Refmac : 5.8.0267
CCP4 : 7.1.010 (Gargrove)
Ideal geometry (proteins) : Engh & Huber (2001)
Ideal geometry (DNA, RNA) : Parkinson et al. (1996)
Validation Pipeline (wwPDB-VP) : 2.23.2

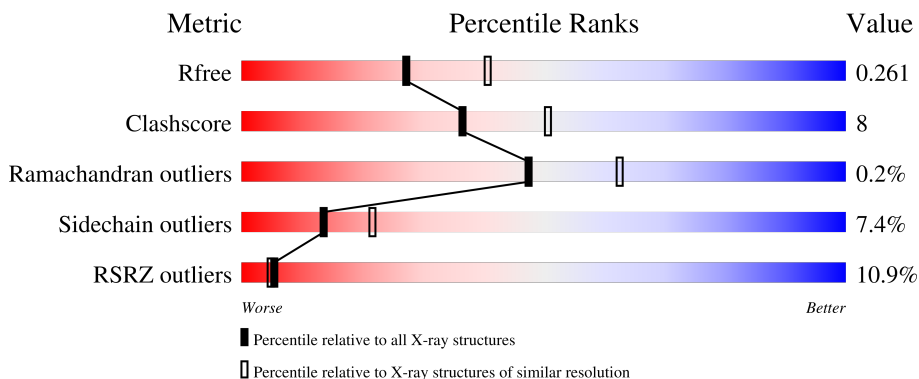
1 Overall quality at a glance

The following experimental techniques were used to determine the structure:

X-RAY DIFFRACTION

The reported resolution of this entry is 2.40 Å.

Percentile scores (ranging between 0-100) for global validation metrics of the entry are shown in the following graphic. The table shows the number of entries on which the scores are based.



Metric	Whole archive (#Entries)	Similar resolution (#Entries, resolution range(Å))
R_{free}	130704	3907 (2.40-2.40)
Clashscore	141614	4398 (2.40-2.40)
Ramachandran outliers	138981	4318 (2.40-2.40)
Sidechain outliers	138945	4319 (2.40-2.40)
RSRZ outliers	127900	3811 (2.40-2.40)

The table below summarises the geometric issues observed across the polymeric chains and their fit to the electron density. The red, orange, yellow and green segments of the lower bar indicate the fraction of residues that contain outliers for ≥ 3 , 2, 1 and 0 types of geometric quality criteria respectively. A grey segment represents the fraction of residues that are not modelled. The numeric value for each fraction is indicated below the corresponding segment, with a dot representing fractions $\leq 5\%$. The upper red bar (where present) indicates the fraction of residues that have poor fit to the electron density. The numeric value is given above the bar.

Mol	Chain	Length	Quality of chain
1	A	292	 12% 77% 17% . .
2	H	121	 12% 87% 12% .
3	L	108	 6% 77% 21% .

The following table lists non-polymeric compounds, carbohydrate monomers and non-standard residues in protein, DNA, RNA chains that are outliers for geometric or electron-density-fit criteria:

Mol	Type	Chain	Res	Chirality	Geometry	Clashes	Electron density
5	OLB	A	404	-	-	-	X
5	OLB	A	406	-	-	-	X

2 Entry composition

There are 8 unique types of molecules in this entry. The entry contains 4309 atoms, of which 0 are hydrogens and 0 are deuteriums.

In the tables below, the ZeroOcc column contains the number of atoms modelled with zero occupancy, the AltConf column contains the number of residues with at least one atom in alternate conformation and the Trace column contains the number of residues modelled with at most 2 atoms.

- Molecule 1 is a protein called Adiponectin receptor protein 2.

Mol	Chain	Residues	Atoms					ZeroOcc	AltConf	Trace
			Total	C	N	O	S			
1	A	285	2297	1541	373	366	17	0	0	0

There are 5 discrepancies between the modelled and reference sequences:

Chain	Residue	Modelled	Actual	Comment	Reference
A	-4	GLY	-	expression tag	UNP Q86V24
A	-3	GLY	-	expression tag	UNP Q86V24
A	-2	SER	-	expression tag	UNP Q86V24
A	-1	GLU	-	expression tag	UNP Q86V24
A	0	PHE	-	expression tag	UNP Q86V24

- Molecule 2 is a protein called V REGION HEAVY CHAIN.

Mol	Chain	Residues	Atoms					ZeroOcc	AltConf	Trace
			Total	C	N	O	S			
2	H	121	935	596	151	184	4	0	0	0

- Molecule 3 is a protein called V REGION LIGHT CHAIN.

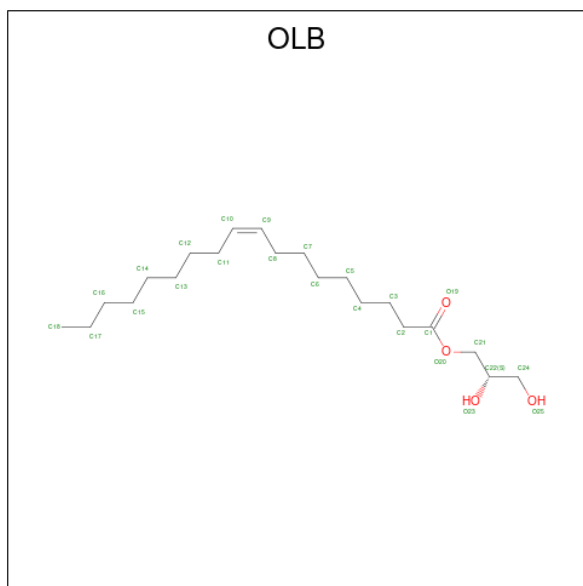
Mol	Chain	Residues	Atoms					ZeroOcc	AltConf	Trace
			Total	C	N	O	S			
3	L	108	826	520	138	165	3	0	0	0

- Molecule 4 is ZINC ION (three-letter code: ZN) (formula: Zn) (labeled as "Ligand of Interest" by depositor).

Mol	Chain	Residues	Atoms		ZeroOcc	AltConf
4	A	1	Total	Zn	0	0
			1	1		

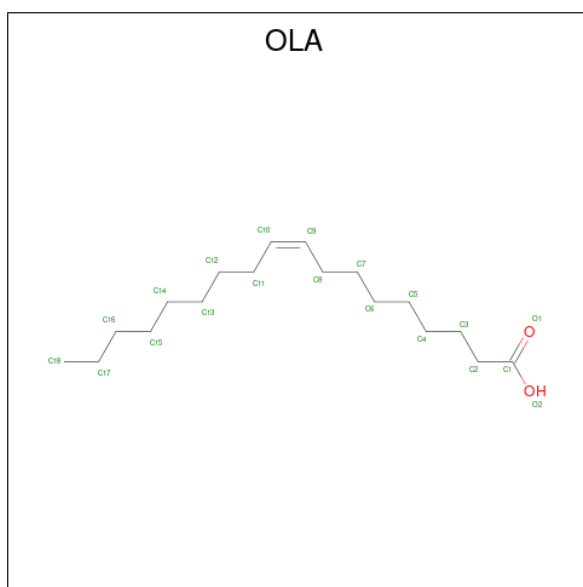
- Molecule 5 is (2S)-2,3-dihydroxypropyl (9Z)-octadec-9-enoate (three-letter code: OLB)

(formula: $C_{21}H_{40}O_4$) (labeled as "Ligand of Interest" by depositor).



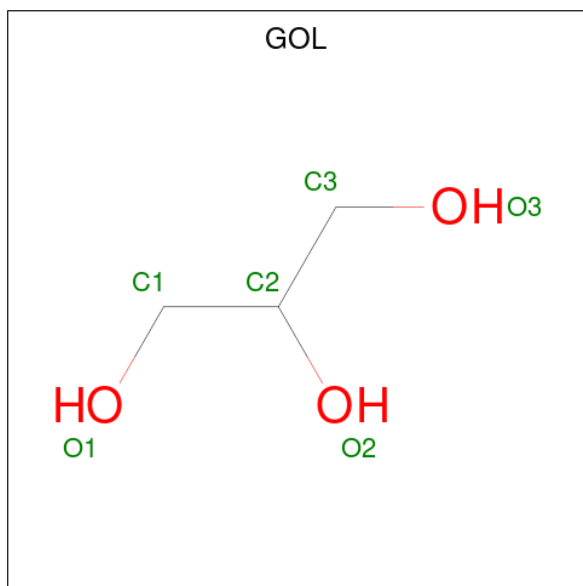
Mol	Chain	Residues	Atoms			ZeroOcc	AltConf
5	A	1	Total	C	O	0	0
			25	21	4		
5	A	1	Total	C	O	0	0
			25	21	4		
5	A	1	Total	C	O	0	0
			25	21	4		
5	A	1	Total	C	O	0	0
			25	21	4		

- Molecule 6 is OLEIC ACID (three-letter code: OLA) (formula: $C_{18}H_{34}O_2$) (labeled as "Ligand of Interest" by depositor).



Mol	Chain	Residues	Atoms			ZeroOcc	AltConf
6	A	1	Total	C	O	0	0
			20	18	2		

- Molecule 7 is GLYCEROL (three-letter code: GOL) (formula: $C_3H_8O_3$) (labeled as "Ligand of Interest" by depositor).



Mol	Chain	Residues	Atoms			ZeroOcc	AltConf
7	L	1	Total	C	O	0	0
			6	3	3		

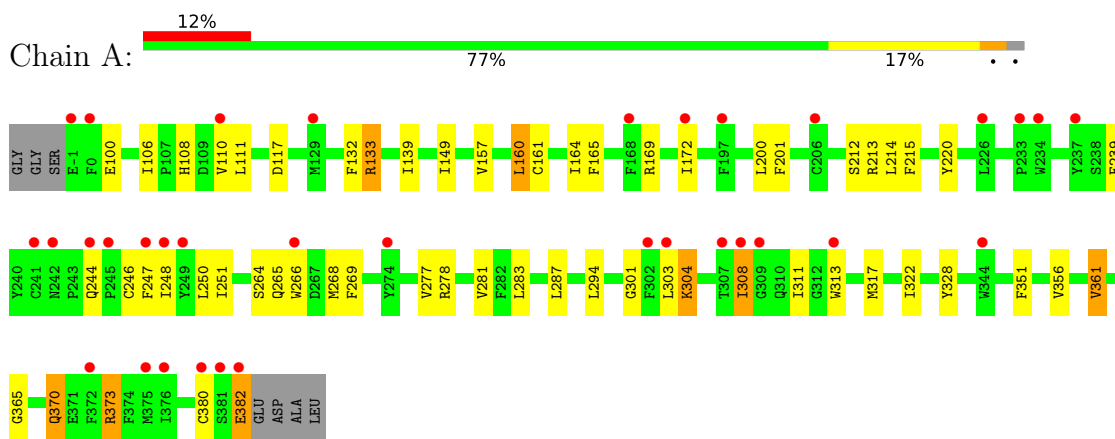
- Molecule 8 is water.

Mol	Chain	Residues	Atoms		ZeroOcc	AltConf
8	A	34	Total 34	O 34	0	0
8	H	42	Total 42	O 42	0	0
8	L	23	Total 23	O 23	0	0

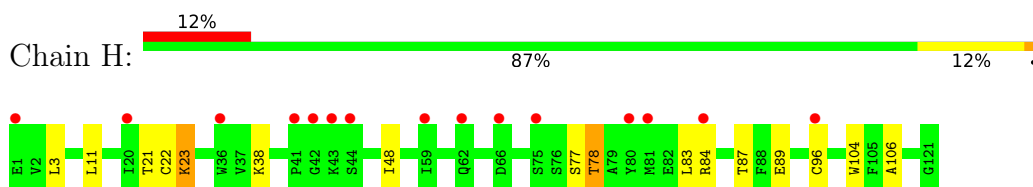
3 Residue-property plots [i](#)

These plots are drawn for all protein, RNA, DNA and oligosaccharide chains in the entry. The first graphic for a chain summarises the proportions of the various outlier classes displayed in the second graphic. The second graphic shows the sequence view annotated by issues in geometry and electron density. Residues are color-coded according to the number of geometric quality criteria for which they contain at least one outlier: green = 0, yellow = 1, orange = 2 and red = 3 or more. A red dot above a residue indicates a poor fit to the electron density ($RSRZ > 2$). Stretches of 2 or more consecutive residues without any outlier are shown as a green connector. Residues present in the sample, but not in the model, are shown in grey.

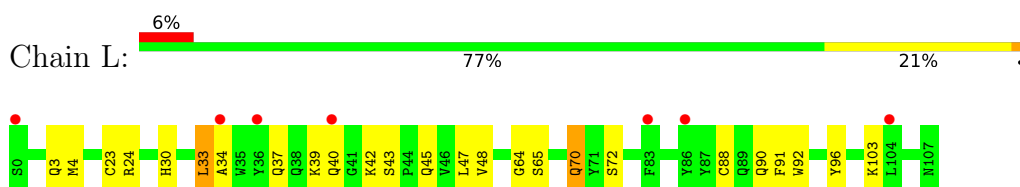
- Molecule 1: Adiponectin receptor protein 2



- Molecule 2: V REGION HEAVY CHAIN



- Molecule 3: V REGION LIGHT CHAIN



4 Data and refinement statistics

Property	Value	Source
Space group	P 21 2 21	Depositor
Cell constants a, b, c, α , β , γ	74.72Å 100.58Å 109.69Å 90.00° 90.00° 90.00°	Depositor
Resolution (Å)	22.00 – 2.40 21.86 – 2.40	Depositor EDS
% Data completeness (in resolution range)	99.4 (22.00-2.40) 99.4 (21.86-2.40)	Depositor EDS
R_{merge}	(Not available)	Depositor
R_{sym}	(Not available)	Depositor
$\langle I/\sigma(I) \rangle$ ¹	1.02 (at 2.41Å)	Xtriage
Refinement program	BUSTER 2.10.3 (3-OCT-2019)	Depositor
R, R_{free}	0.207 , 0.248 0.222 , 0.261	Depositor DCC
R_{free} test set	1632 reflections (5.00%)	wwPDB-VP
Wilson B-factor (Å ²)	60.7	Xtriage
Anisotropy	0.622	Xtriage
Bulk solvent k_{sol} (e/Å ³), B_{sol} (Å ²)	(Not available) , (Not available)	EDS
L-test for twinning ²	$\langle L \rangle = 0.50$, $\langle L^2 \rangle = 0.33$	Xtriage
Estimated twinning fraction	No twinning to report.	Xtriage
F_o, F_c correlation	0.95	EDS
Total number of atoms	4309	wwPDB-VP
Average B, all atoms (Å ²)	80.0	wwPDB-VP

Xtriage's analysis on translational NCS is as follows: *The largest off-origin peak in the Patterson function is 6.50% of the height of the origin peak. No significant pseudotranslation is detected.*

¹Intensities estimated from amplitudes.

²Theoretical values of $\langle |L| \rangle$, $\langle L^2 \rangle$ for acentric reflections are 0.5, 0.333 respectively for untwinned datasets, and 0.375, 0.2 for perfectly twinned datasets.

5 Model quality [i](#)

5.1 Standard geometry [i](#)

Bond lengths and bond angles in the following residue types are not validated in this section: ZN, GOL, OLA, OLB

The Z score for a bond length (or angle) is the number of standard deviations the observed value is removed from the expected value. A bond length (or angle) with $|Z| > 5$ is considered an outlier worth inspection. RMSZ is the root-mean-square of all Z scores of the bond lengths (or angles).

Mol	Chain	Bond lengths		Bond angles	
		RMSZ	# Z >5	RMSZ	# Z >5
1	A	0.53	0/2381	0.65	0/3236
2	H	0.53	0/959	0.74	0/1301
3	L	0.53	0/846	0.64	0/1148
All	All	0.53	0/4186	0.67	0/5685

There are no bond length outliers.

There are no bond angle outliers.

There are no chirality outliers.

There are no planarity outliers.

5.2 Too-close contacts [i](#)

In the following table, the Non-H and H(model) columns list the number of non-hydrogen atoms and hydrogen atoms in the chain respectively. The H(added) column lists the number of hydrogen atoms added and optimized by MolProbity. The Clashes column lists the number of clashes within the asymmetric unit, whereas Symm-Clashes lists symmetry-related clashes.

Mol	Chain	Non-H	H(model)	H(added)	Clashes	Symm-Clashes
1	A	2297	0	2271	42	0
2	H	935	0	894	6	0
3	L	826	0	791	14	0
4	A	1	0	0	0	0
5	A	125	0	200	15	0
6	A	20	0	33	4	0
7	L	6	0	8	0	0
8	A	34	0	0	3	0
8	H	42	0	0	0	0
8	L	23	0	0	0	0
All	All	4309	0	4197	65	0

The all-atom clashscore is defined as the number of clashes found per 1000 atoms (including hydrogen atoms). The all-atom clashscore for this structure is 8.

All (65) close contacts within the same asymmetric unit are listed below, sorted by their clash magnitude.

Atom-1	Atom-2	Interatomic distance (Å)	Clash overlap (Å)
6:A:407:OLA:H32	8:A:502:HOH:O	1.43	1.16
1:A:373:ARG:HH21	1:A:373:ARG:HG2	1.34	0.90
2:H:22:CYS:HG	2:H:96:CYS:HG	0.92	0.84
1:A:351:PHE:HE1	6:A:407:OLA:H112	1.52	0.75
1:A:373:ARG:HG2	1:A:373:ARG:NH2	2.06	0.69
2:H:23:LYS:HG2	2:H:78:THR:HG22	1.73	0.67
1:A:373:ARG:HH21	1:A:373:ARG:CG	2.08	0.65
5:A:402:OLB:H2A	3:L:30:HIS:HD2	1.61	0.63
2:H:22:CYS:HG	2:H:96:CYS:CB	2.12	0.63
1:A:160:LEU:O	1:A:164:ILE:HG12	1.99	0.62
1:A:303:LEU:HB3	1:A:304:LYS:HZ2	1.65	0.60
1:A:220:TYR:HB3	1:A:264:SER:HB2	1.82	0.60
1:A:311:ILE:HD13	5:A:406:OLB:H22	1.85	0.59
1:A:132:PHE:HB2	5:A:402:OLB:H5A	1.86	0.57
3:L:4:MET:HE2	3:L:90:GLN:HB3	1.85	0.57
1:A:133:ARG:HB2	5:A:402:OLB:H3	1.87	0.57
1:A:165:PHE:HD1	5:A:403:OLB:H3A	1.70	0.57
1:A:132:PHE:N	5:A:402:OLB:H2	2.20	0.56
1:A:161:CYS:HB2	5:A:403:OLB:H29	1.89	0.55
1:A:139:ILE:HG12	1:A:149:ILE:HG21	1.89	0.54
3:L:40:GLN:NE2	3:L:40:GLN:H	2.04	0.54
1:A:106:ILE:HD12	1:A:110:VAL:HG23	1.90	0.54
3:L:23:CYS:HG	3:L:88:CYS:HG	1.53	0.53
1:A:169:ARG:HH12	1:A:370:GLN:NE2	2.06	0.53
1:A:287:LEU:HD11	1:A:322:ILE:HD11	1.90	0.52
1:A:283:LEU:HD21	1:A:322:ILE:HD13	1.92	0.51
3:L:48:VAL:HG11	3:L:64:GLY:HA3	1.91	0.51
3:L:91:PHE:HA	3:L:96:TYR:CD1	2.45	0.51
1:A:328:TYR:CE1	6:A:407:OLA:H21	2.46	0.50
2:H:87:THR:HG22	2:H:89:GLU:H	1.76	0.49
1:A:266:TRP:CE2	1:A:268:MET:HB2	2.46	0.49
1:A:165:PHE:HB3	5:A:403:OLB:C3	2.43	0.48
1:A:200:LEU:HD11	5:A:402:OLB:H40	1.96	0.48
3:L:37:GLN:HB2	3:L:47:LEU:HD11	1.96	0.47
3:L:23:CYS:SG	3:L:88:CYS:SG	3.06	0.47
1:A:380:CYS:SG	1:A:382:GLU:OE2	2.72	0.47
1:A:247:PHE:O	1:A:251:ILE:HG12	2.14	0.47

Continued on next page...

Continued from previous page...

Atom-1	Atom-2	Interatomic distance (Å)	Clash overlap (Å)
1:A:165:PHE:O	5:A:403:OLB:H3	2.15	0.47
1:A:165:PHE:CD1	5:A:403:OLB:H3A	2.50	0.47
2:H:104:TRP:CZ3	2:H:106:ALA:HB2	2.51	0.45
1:A:269:PHE:O	1:A:278:ARG:HD3	2.16	0.45
1:A:213:ARG:NE	1:A:213:ARG:HA	2.32	0.44
1:A:277:VAL:O	1:A:281:VAL:HG23	2.18	0.44
1:A:317:MET:SD	1:A:361:VAL:HG22	2.57	0.44
1:A:382:GLU:H	1:A:382:GLU:HG3	1.58	0.44
5:A:402:OLB:H221	5:A:402:OLB:H27	1.86	0.44
1:A:322:ILE:HG23	5:A:405:OLB:H34	2.00	0.44
3:L:24:ARG:HG3	3:L:70:GLN:HE21	1.82	0.44
1:A:304:LYS:O	1:A:308:ILE:HG12	2.18	0.43
3:L:23:CYS:CB	3:L:88:CYS:HG	2.31	0.43
3:L:33:LEU:HG	3:L:34:ALA:N	2.33	0.43
1:A:301:GLY:HA3	1:A:304:LYS:NZ	2.33	0.43
2:H:38:LYS:HB2	2:H:48:ILE:HD11	2.00	0.43
1:A:132:PHE:H	5:A:402:OLB:H2	1.83	0.43
6:A:407:OLA:C3	8:A:502:HOH:O	2.27	0.42
1:A:244:GLN:O	1:A:248:ILE:HG12	2.20	0.42
1:A:201:PHE:HB2	1:A:215:PHE:HB3	2.02	0.42
1:A:239:PHE:HB2	1:A:246:CYS:HB2	2.02	0.42
1:A:108:HIS:HA	1:A:111:LEU:HD12	2.02	0.41
5:A:402:OLB:O19	8:A:501:HOH:O	2.22	0.41
1:A:220:TYR:CB	1:A:264:SER:HB2	2.50	0.41
3:L:39:LYS:HB2	3:L:42:LYS:HE3	2.03	0.41
3:L:33:LEU:HD11	3:L:88:CYS:HB2	2.02	0.41
1:A:100:GLU:CD	3:L:92:TRP:HE1	2.25	0.40
1:A:313:TRP:CE2	1:A:365:GLY:HA3	2.57	0.40

There are no symmetry-related clashes.

5.3 Torsion angles [\(i\)](#)

5.3.1 Protein backbone [\(i\)](#)

In the following table, the Percentiles column shows the percent Ramachandran outliers of the chain as a percentile score with respect to all X-ray entries followed by that with respect to entries of similar resolution.

The Analysed column shows the number of residues for which the backbone conformation was analysed, and the total number of residues.

Mol	Chain	Analysed	Favoured	Allowed	Outliers	Percentiles	
1	A	283/292 (97%)	276 (98%)	6 (2%)	1 (0%)	34	48
2	H	119/121 (98%)	112 (94%)	7 (6%)	0	100	100
3	L	106/108 (98%)	103 (97%)	3 (3%)	0	100	100
All	All	508/521 (98%)	491 (97%)	16 (3%)	1 (0%)	47	62

All (1) Ramachandran outliers are listed below:

Mol	Chain	Res	Type
1	A	308	ILE

5.3.2 Protein sidechains [i](#)

In the following table, the Percentiles column shows the percent sidechain outliers of the chain as a percentile score with respect to all X-ray entries followed by that with respect to entries of similar resolution.

The Analysed column shows the number of residues for which the sidechain conformation was analysed, and the total number of residues.

Mol	Chain	Analysed	Rotameric	Outliers	Percentiles	
1	A	242/246 (98%)	226 (93%)	16 (7%)	16	26
2	H	99/99 (100%)	91 (92%)	8 (8%)	11	18
3	L	91/91 (100%)	83 (91%)	8 (9%)	10	15
All	All	432/436 (99%)	400 (93%)	32 (7%)	13	22

All (32) residues with a non-rotameric sidechain are listed below:

Mol	Chain	Res	Type
1	A	117	ASP
1	A	133	ARG
1	A	157	VAL
1	A	160	LEU
1	A	172	ILE
1	A	212	SER
1	A	214	LEU
1	A	250	LEU
1	A	265	GLN
1	A	294	LEU
1	A	304	LYS
1	A	356	VAL

Continued on next page...

Continued from previous page...

Mol	Chain	Res	Type
1	A	361	VAL
1	A	370	GLN
1	A	373	ARG
1	A	382	GLU
2	H	3	LEU
2	H	11	LEU
2	H	21	THR
2	H	23	LYS
2	H	77	SER
2	H	78	THR
2	H	83	LEU
2	H	84	ARG
3	L	3	GLN
3	L	33	LEU
3	L	43	SER
3	L	45	GLN
3	L	65	SER
3	L	70	GLN
3	L	72	SER
3	L	103	LYS

Sometimes sidechains can be flipped to improve hydrogen bonding and reduce clashes. All (4) such sidechains are listed below:

Mol	Chain	Res	Type
1	A	265	GLN
1	A	370	GLN
3	L	40	GLN
3	L	70	GLN

5.3.3 RNA [i](#)

There are no RNA molecules in this entry.

5.4 Non-standard residues in protein, DNA, RNA chains [i](#)

There are no non-standard protein/DNA/RNA residues in this entry.

5.5 Carbohydrates [i](#)

There are no monosaccharides in this entry.

5.6 Ligand geometry [i](#)

Of 8 ligands modelled in this entry, 1 is monoatomic - leaving 7 for Mogul analysis.

There are no bond length outliers.

There are no bond angle outliers.

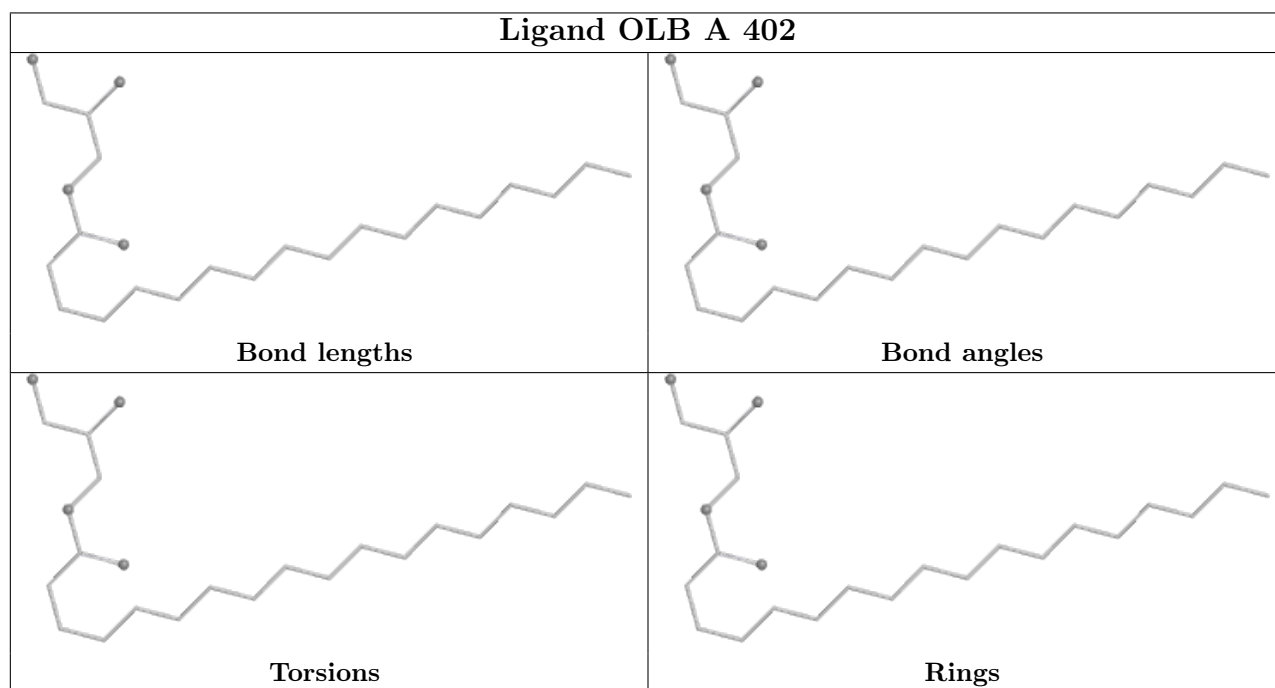
There are no chirality outliers.

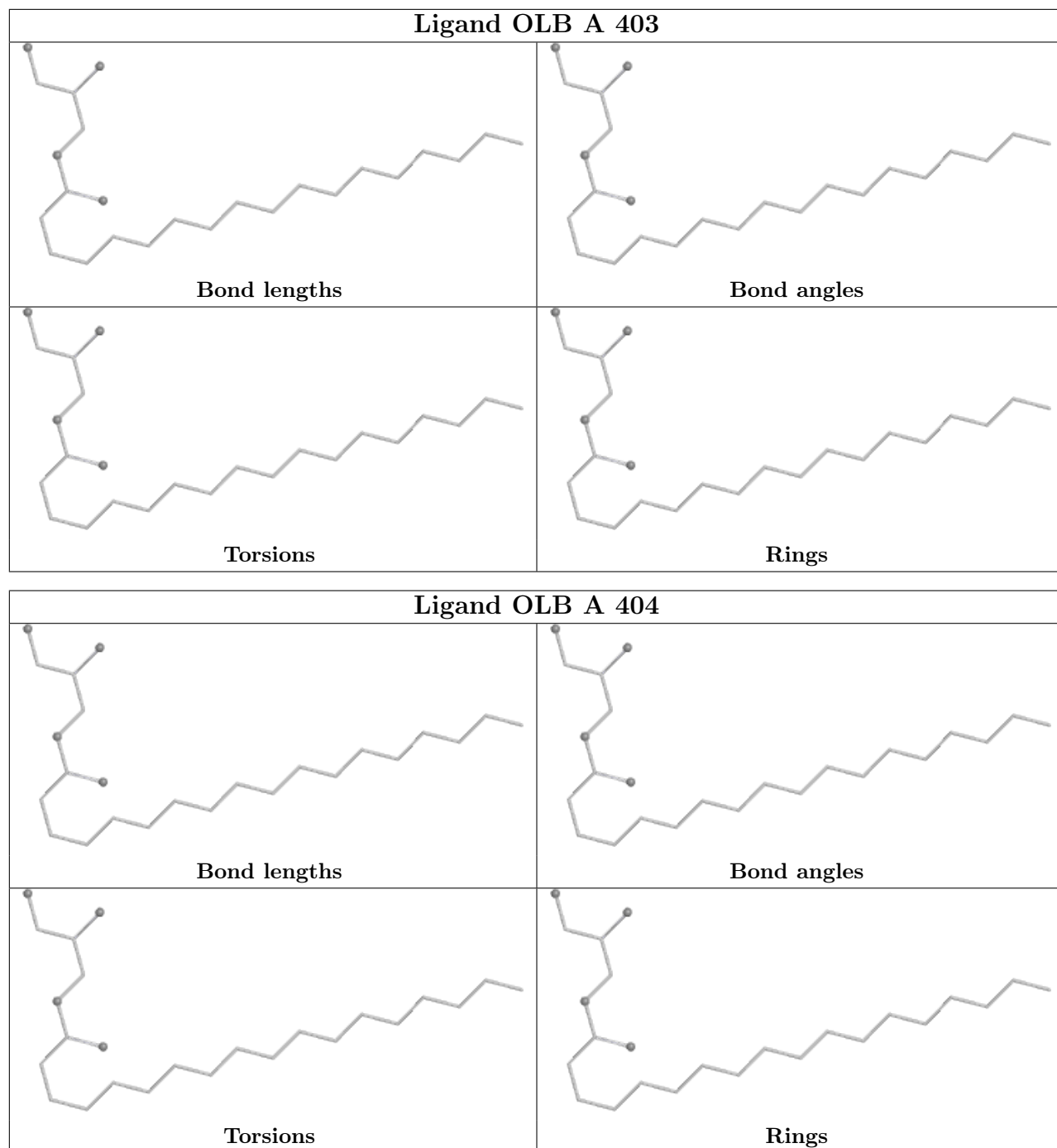
There are no torsion outliers.

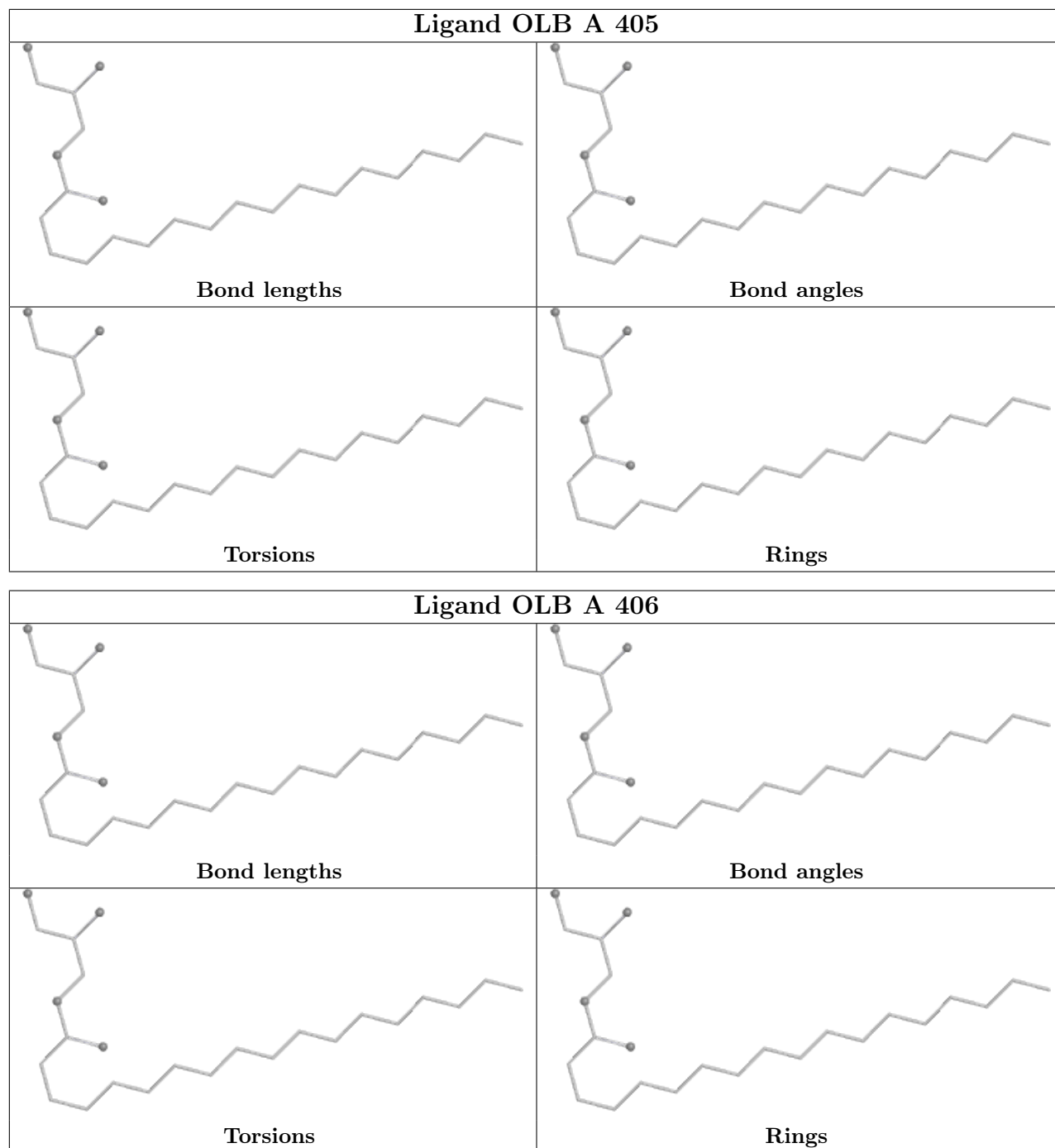
There are no ring outliers.

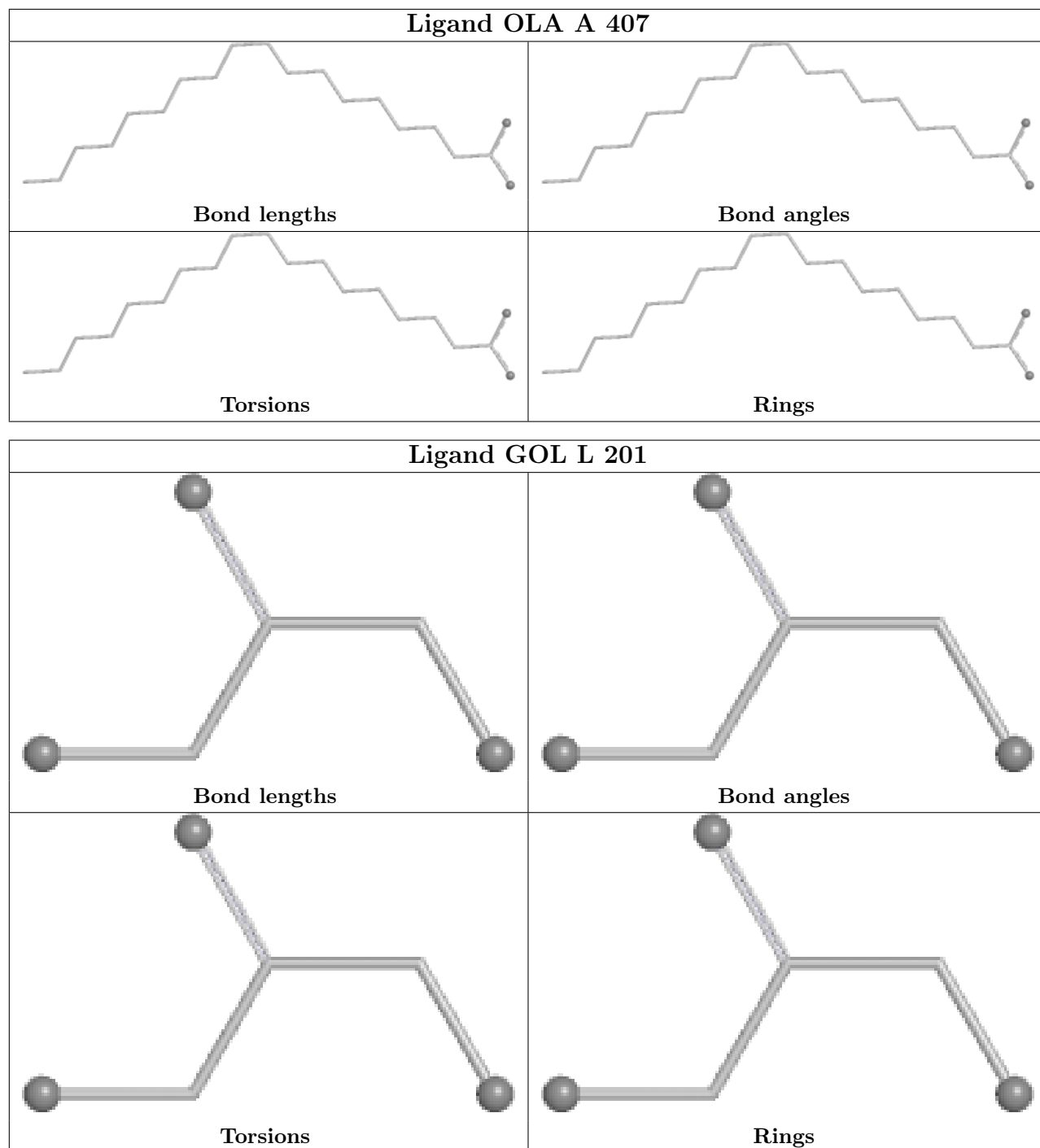
No monomer is involved in short contacts.

The following is a two-dimensional graphical depiction of Mogul quality analysis of bond lengths, bond angles, torsion angles, and ring geometry for all instances of the Ligand of Interest. In addition, ligands with molecular weight > 250 and outliers as shown on the validation Tables will also be included. For torsion angles, if less than 5% of the Mogul distribution of torsion angles is within 10 degrees of the torsion angle in question, then that torsion angle is considered an outlier. Any bond that is central to one or more torsion angles identified as an outlier by Mogul will be highlighted in the graph. For rings, the root-mean-square deviation (RMSD) between the ring in question and similar rings identified by Mogul is calculated over all ring torsion angles. If the average RMSD is greater than 60 degrees and the minimal RMSD between the ring in question and any Mogul-identified rings is also greater than 60 degrees, then that ring is considered an outlier. The outliers are highlighted in purple. The color gray indicates Mogul did not find sufficient equivalents in the CSD to analyse the geometry.









5.7 Other polymers [i](#)

There are no such residues in this entry.

5.8 Polymer linkage issues [i](#)

There are no chain breaks in this entry.

6 Fit of model and data

6.1 Protein, DNA and RNA chains

In the following table, the column labelled ‘#RSRZ > 2’ contains the number (and percentage) of RSRZ outliers, followed by percent RSRZ outliers for the chain as percentile scores relative to all X-ray entries and entries of similar resolution. The OWAB column contains the minimum, median, 95th percentile and maximum values of the occupancy-weighted average B-factor per residue. The column labelled ‘Q < 0.9’ lists the number of (and percentage) of residues with an average occupancy less than 0.9.

Mol	Chain	Analysed	<RSRZ>	#RSRZ>2	OWAB(Å ²)	Q<0.9
1	A	285/292 (97%)	0.65	34 (11%) 4 4	63, 78, 111, 144	0
2	H	121/121 (100%)	0.53	15 (12%) 4 3	63, 77, 92, 97	0
3	L	108/108 (100%)	0.56	7 (6%) 18 17	60, 76, 93, 100	0
All	All	514/521 (98%)	0.61	56 (10%) 5 5	60, 77, 104, 144	0

All (56) RSRZ outliers are listed below:

Mol	Chain	Res	Type	RSRZ
1	A	381	SER	8.4
1	A	380	CYS	7.2
3	L	0	SER	6.3
1	A	382	GLU	5.4
2	H	42	GLY	4.9
1	A	266	TRP	4.7
1	A	344	TRP	4.3
1	A	303	LEU	4.3
3	L	40	GLN	3.9
3	L	83	PHE	3.8
1	A	0	PHE	3.7
2	H	41	PRO	3.6
1	A	308	ILE	3.4
1	A	307	THR	3.2
1	A	172	ILE	3.2
1	A	375	MET	3.2
1	A	247	PHE	3.2
3	L	36	TYR	2.9
1	A	313	TRP	2.9
1	A	245	PRO	2.9
1	A	237	TYR	2.8
2	H	96	CYS	2.7
1	A	372	PHE	2.7

Continued on next page...

Continued from previous page...

Mol	Chain	Res	Type	RSRZ
2	H	44	SER	2.6
2	H	36	TRP	2.6
1	A	197	PHE	2.6
1	A	302	PHE	2.5
1	A	206	CYS	2.5
2	H	1	GLU	2.5
1	A	241	CYS	2.5
1	A	244	GLN	2.4
1	A	110	VAL	2.4
3	L	34	ALA	2.4
2	H	75	SER	2.4
1	A	-1	GLU	2.3
1	A	248	ILE	2.3
1	A	168	PHE	2.3
1	A	309	GLY	2.3
2	H	62	GLN	2.3
3	L	104	LEU	2.3
2	H	81	MET	2.3
1	A	274	TYR	2.3
3	L	86	TYR	2.3
2	H	84	ARG	2.2
2	H	43	LYS	2.2
2	H	59	ILE	2.2
1	A	129	MET	2.2
2	H	80	TYR	2.2
1	A	233	PRO	2.1
2	H	66	ASP	2.1
1	A	249	TYR	2.1
1	A	376	ILE	2.1
1	A	226	LEU	2.1
1	A	242	ASN	2.1
1	A	234	TRP	2.0
2	H	20	ILE	2.0

6.2 Non-standard residues in protein, DNA, RNA chains [i](#)

There are no non-standard protein/DNA/RNA residues in this entry.

6.3 Carbohydrates [i](#)

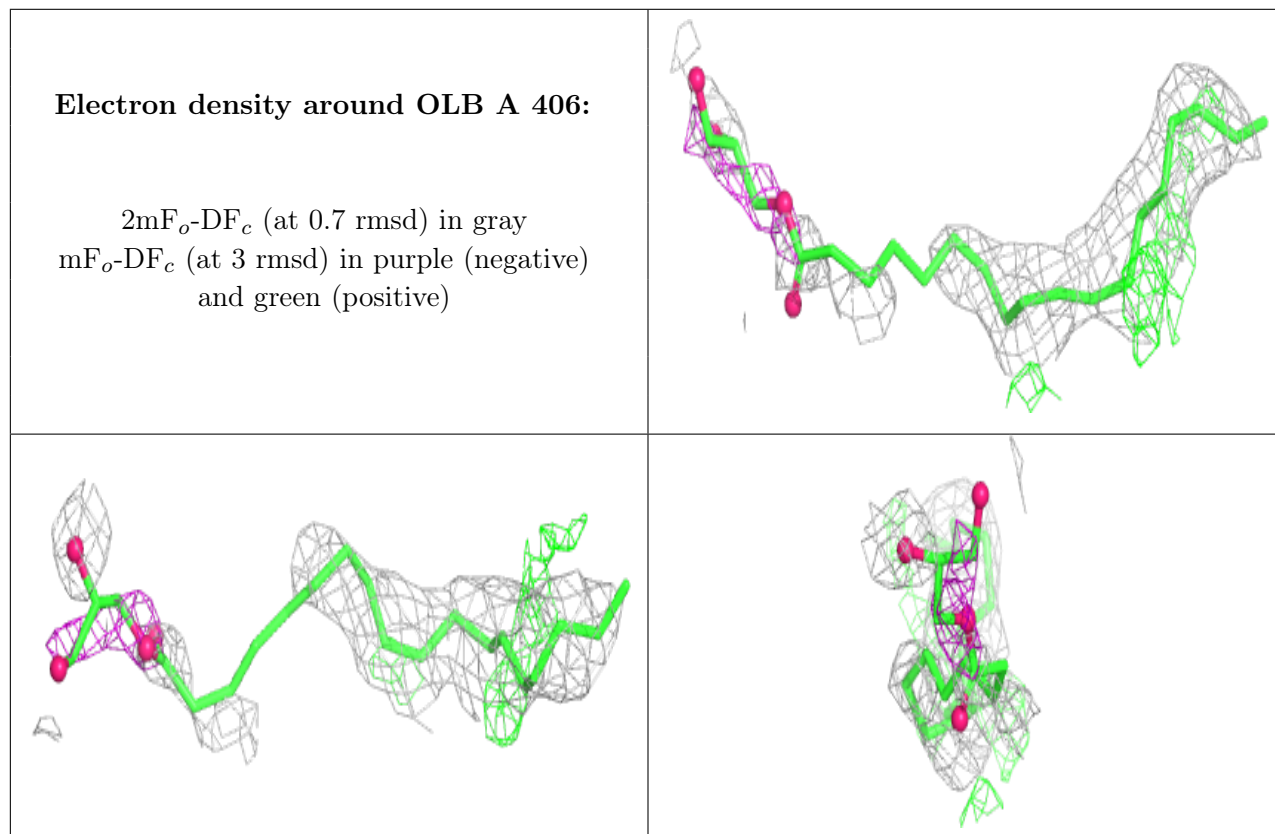
There are no monosaccharides in this entry.

6.4 Ligands [i](#)

In the following table, the Atoms column lists the number of modelled atoms in the group and the number defined in the chemical component dictionary. The B-factors column lists the minimum, median, 95th percentile and maximum values of B factors of atoms in the group. The column labelled 'Q<0.9' lists the number of atoms with occupancy less than 0.9.

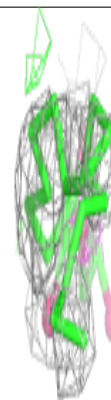
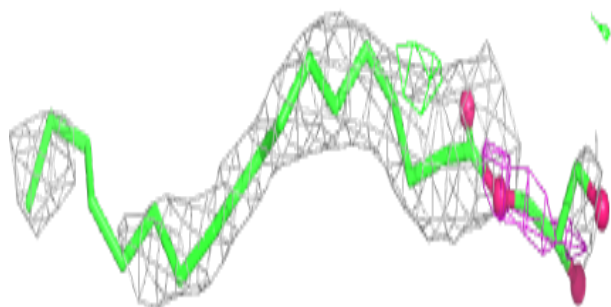
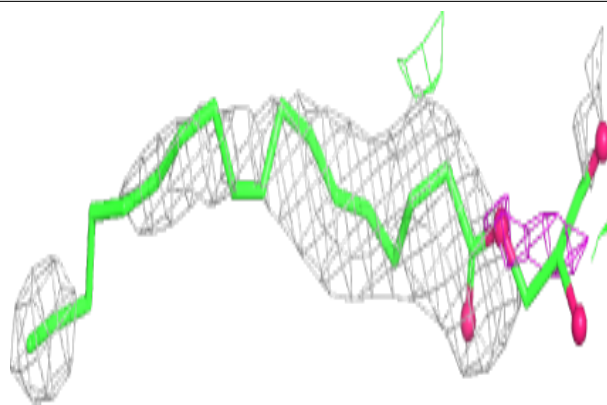
Mol	Type	Chain	Res	Atoms	RSCC	RSR	B-factors(Å ²)	Q<0.9
5	OLB	A	406	25/25	0.10	0.72	110,122,132,133	0
5	OLB	A	404	25/25	0.58	0.57	107,109,116,116	0
5	OLB	A	405	25/25	0.61	0.34	97,102,114,114	0
5	OLB	A	403	25/25	0.65	0.37	97,101,103,103	0
7	GOL	L	201	6/6	0.68	0.26	113,114,114,114	0
5	OLB	A	402	25/25	0.71	0.35	90,94,102,102	0
6	OLA	A	407	20/20	0.86	0.32	70,74,81,82	0
4	ZN	A	401	1/1	0.96	0.21	72,72,72,72	0

The following is a graphical depiction of the model fit to experimental electron density of all instances of the Ligand of Interest. In addition, ligands with molecular weight > 250 and outliers as shown on the geometry validation Tables will also be included. Each fit is shown from different orientation to approximate a three-dimensional view.

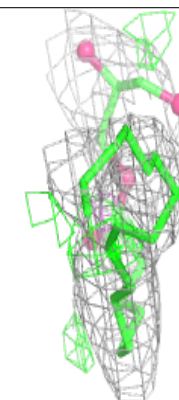
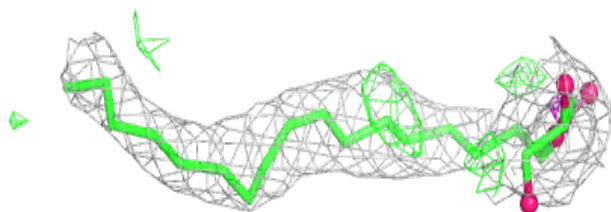
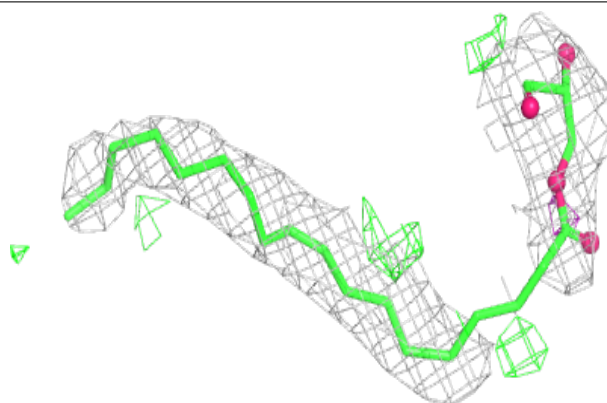


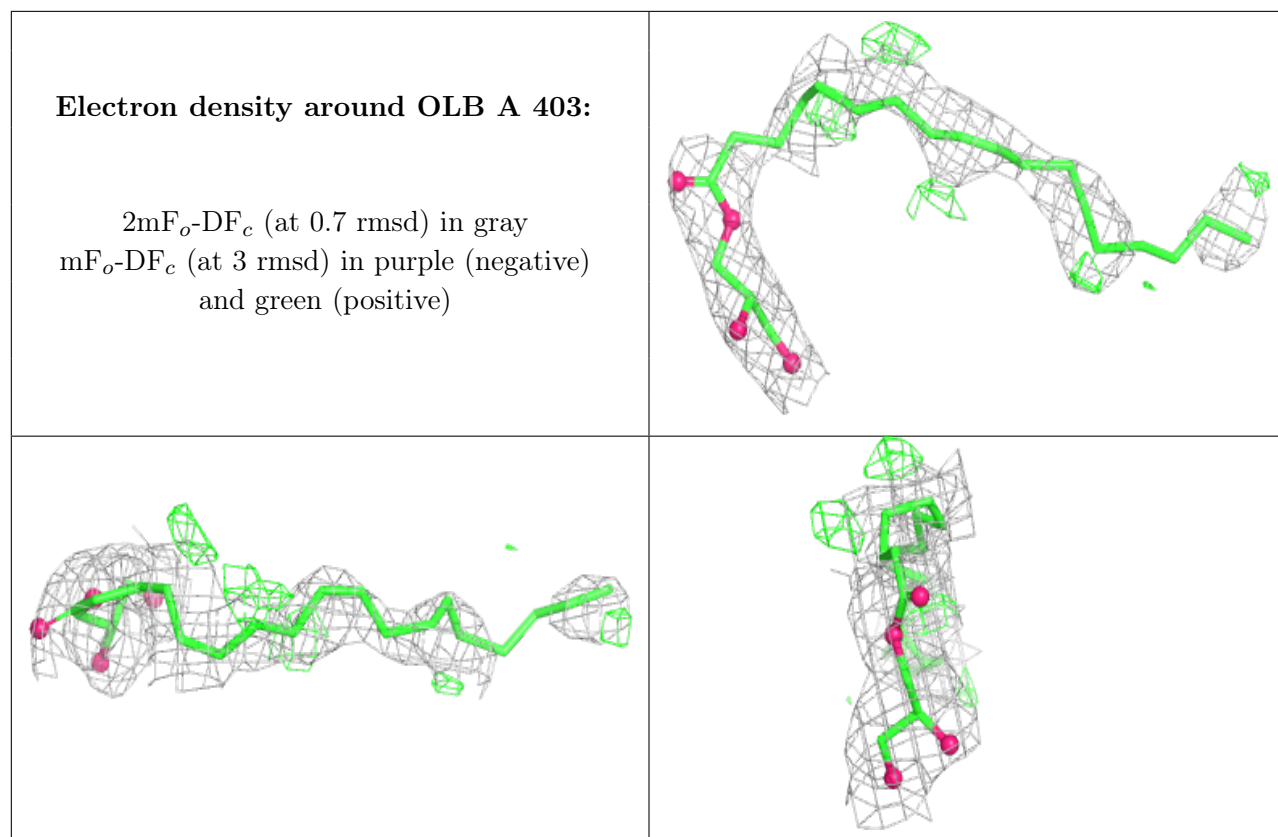
Electron density around OLB A 404:

$2mF_o-DF_c$ (at 0.7 rmsd) in gray
 mF_o-DF_c (at 3 rmsd) in purple (negative)
and green (positive)

**Electron density around OLB A 405:**

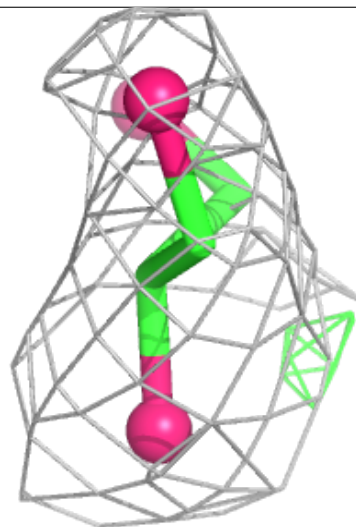
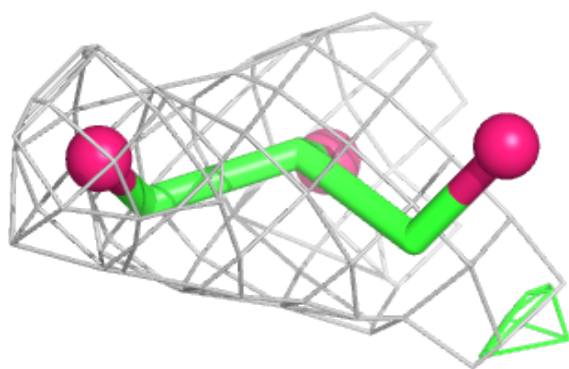
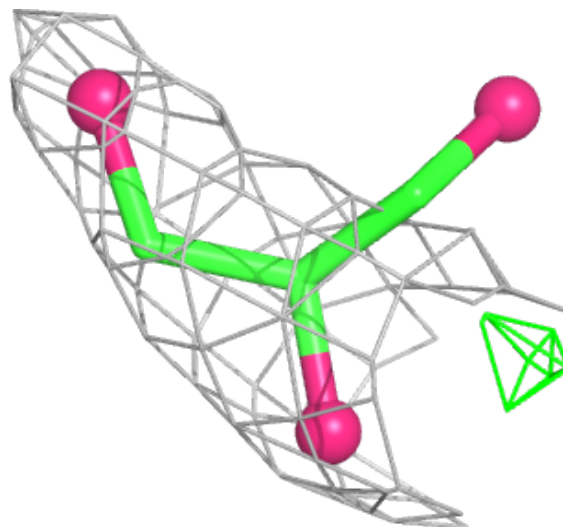
$2mF_o-DF_c$ (at 0.7 rmsd) in gray
 mF_o-DF_c (at 3 rmsd) in purple (negative)
and green (positive)





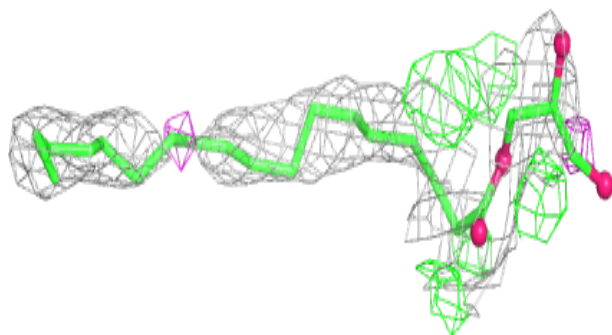
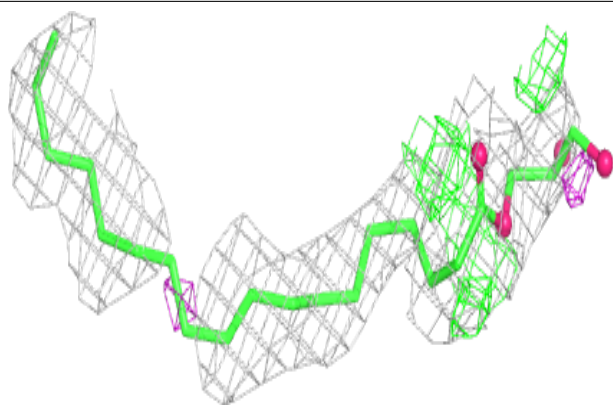
Electron density around GOL L 201:

$2mF_o-DF_c$ (at 0.7 rmsd) in gray
 mF_o-DF_c (at 3 rmsd) in purple (negative)
and green (positive)

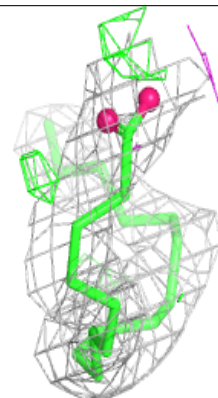
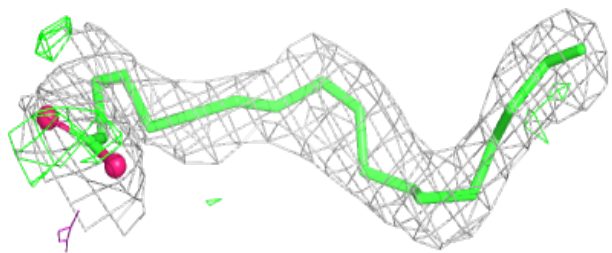
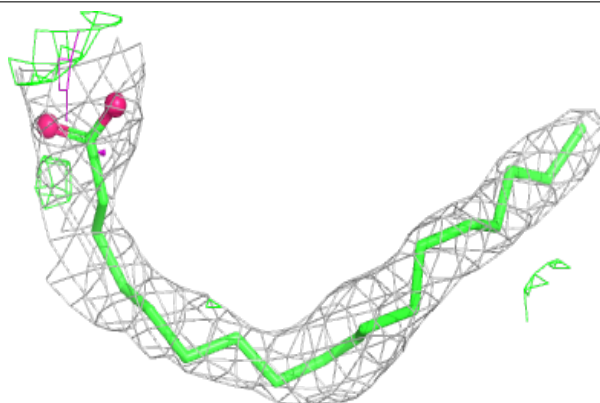


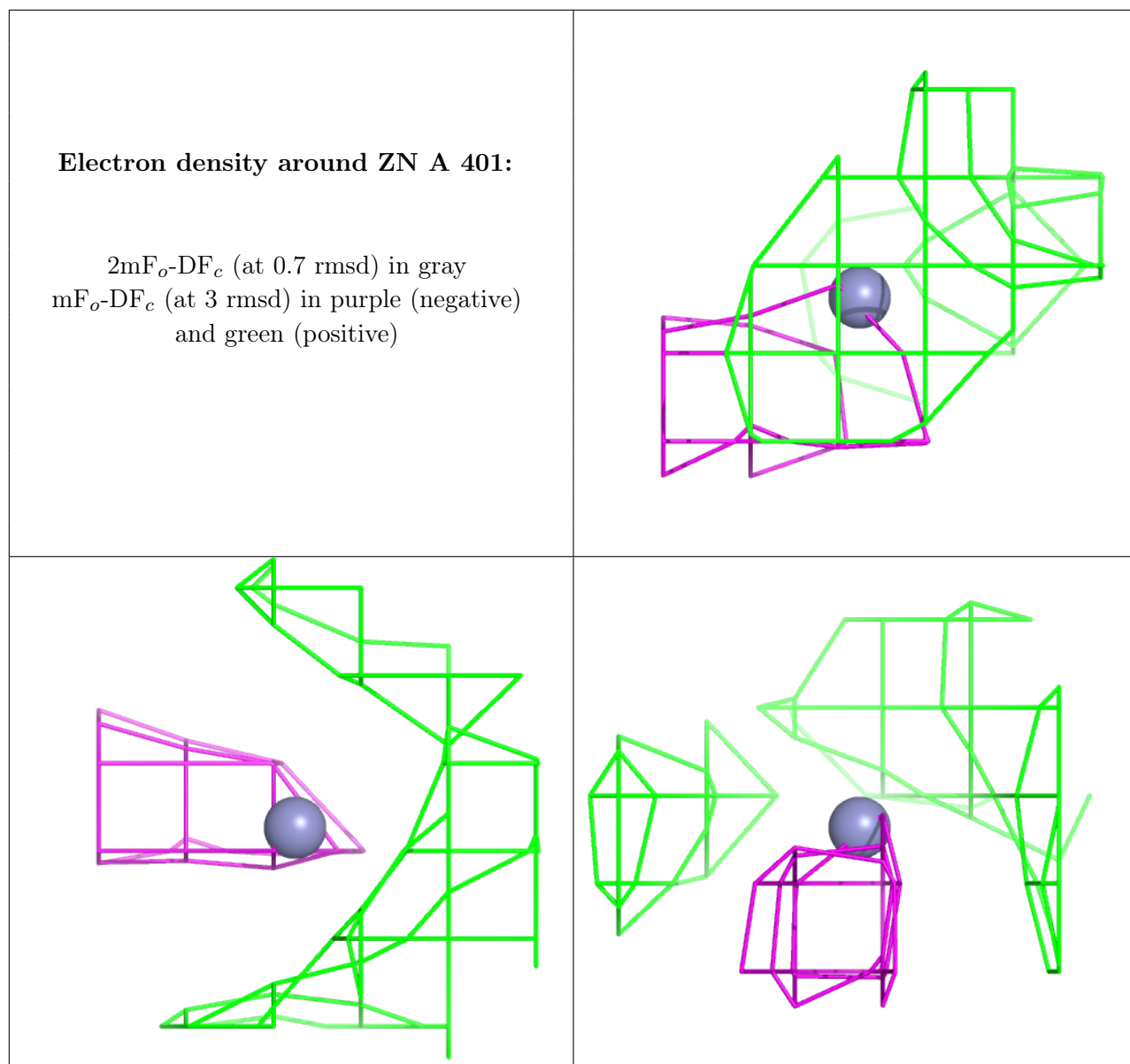
Electron density around OLB A 402:

$2mF_o-DF_c$ (at 0.7 rmsd) in gray
 mF_o-DF_c (at 3 rmsd) in purple (negative)
and green (positive)

**Electron density around OLA A 407:**

$2mF_o-DF_c$ (at 0.7 rmsd) in gray
 mF_o-DF_c (at 3 rmsd) in purple (negative)
and green (positive)





6.5 Other polymers [i](#)

There are no such residues in this entry.