



Full wwPDB X-ray Structure Validation Report ⓘ

Mar 10, 2026 – 06:58 PM UTC

PDB ID : 6VJE / pdb_00006vje
Title : Crystal structure of Pseudomonas aeruginosa penicillin-binding protein 3 (PBP3) complexed with ceftobiprole
Authors : van den Akker, F.; Kumar, V.
Deposited on : 2020-01-15
Resolution : 1.76 Å(reported)

This is a Full wwPDB X-ray Structure Validation Report for a publicly released PDB entry.

We welcome your comments at validation@mail.wwpdb.org

A user guide is available at

<https://www.wwpdb.org/validation/2017/XrayValidationReportHelp>

with specific help available everywhere you see the ⓘ symbol.

The types of validation reports are described at

<http://www.wwpdb.org/validation/2017/FAQs#types>.

The following versions of software and data (see [references ⓘ](#)) were used in the production of this report:

MolProbity : 4-5-2 with Phenix2.0
Mogul : 2022.3.0, CSD as543be (2022)
Xtrriage (Phenix) : 2.0
EDS : 3.0
Buster-report : wwPDB partial adaption of 1.1.7 (2018)
Percentile statistics : 20250101.v01 (using entries in the PDB archive January 1st 2025)
CCP4 : 9.0.010 (Gargrove)
Density-Fitness : 1.0.12
Ideal geometry (proteins) : Engh & Huber (2001)
Ideal geometry (DNA, RNA) : Parkinson et al. (1996)
Validation Pipeline (wwPDB-VP) : 2.49

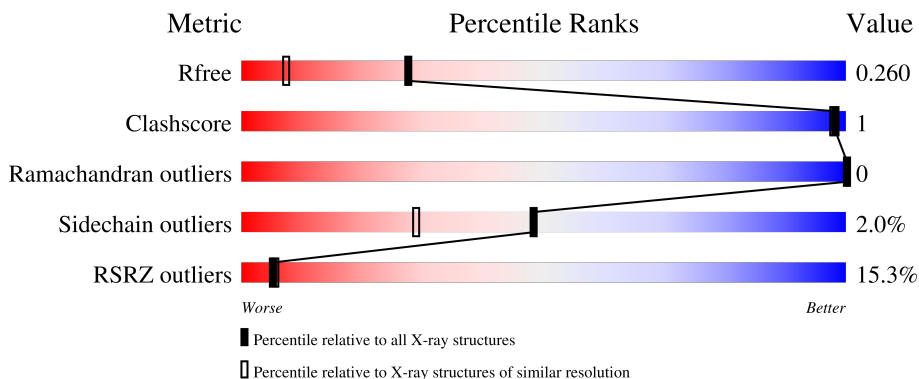
1 Overall quality at a glance

The following experimental techniques were used to determine the structure:

X-RAY DIFFRACTION

The reported resolution of this entry is 1.76 Å.

Percentile scores (ranging between 0-100) for global validation metrics of the entry are shown in the following graphic. The table shows the number of entries on which the scores are based.



Metric	Whole archive (#Entries)	Similar resolution (#Entries, resolution range(Å))
R_{free}	180053	3183 (1.76-1.76)
Clashscore	190562	3299 (1.76-1.76)
Ramachandran outliers	187476	3274 (1.76-1.76)
Sidechain outliers	187428	3274 (1.76-1.76)
RSRZ outliers	180081	3183 (1.76-1.76)

The table below summarises the geometric issues observed across the polymeric chains and their fit to the electron density. The red, orange, yellow and green segments of the lower bar indicate the fraction of residues that contain outliers for ≥ 3 , 2, 1 and 0 types of geometric quality criteria respectively. A grey segment represents the fraction of residues that are not modelled. The numeric value for each fraction is indicated below the corresponding segment, with a dot representing fractions $\leq 5\%$. The upper red bar (where present) indicates the fraction of residues that have poor fit to the electron density. The numeric value is given above the bar.

Mol	Chain	Length	Quality of chain
1	A	538	

2 Entry composition

There are 4 unique types of molecules in this entry. The entry contains 4142 atoms, of which 0 are hydrogens and 0 are deuteriums.

In the tables below, the ZeroOcc column contains the number of atoms modelled with zero occupancy, the AltConf column contains the number of residues with at least one atom in alternate conformation and the Trace column contains the number of residues modelled with at most 2 atoms.

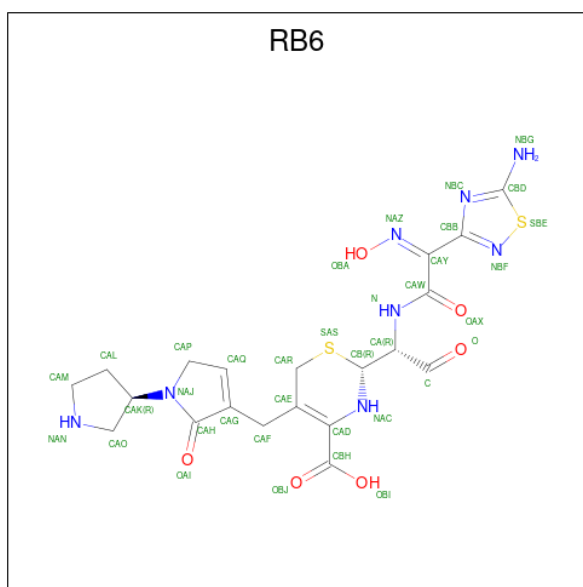
- Molecule 1 is a protein called Peptidoglycan D,D-transpeptidase FtSI.

Mol	Chain	Residues	Atoms					ZeroOcc	AltConf	Trace
			Total	C	N	O	S			
1	A	502	3862	2438	701	710	13	0	5	0

There are 8 discrepancies between the modelled and reference sequences:

Chain	Residue	Modelled	Actual	Comment	Reference
A	42	MET	-	initiating methionine	UNP Q51504
A	43	GLY	-	expression tag	UNP Q51504
A	44	HIS	-	expression tag	UNP Q51504
A	45	HIS	-	expression tag	UNP Q51504
A	46	HIS	-	expression tag	UNP Q51504
A	47	HIS	-	expression tag	UNP Q51504
A	48	HIS	-	expression tag	UNP Q51504
A	49	HIS	-	expression tag	UNP Q51504

- Molecule 2 is (2R)-2-[(1R)-1-{{(2Z)-2-(5-amino-1,2,4-thiadiazol-3-yl)-2-(hydroxyimino)acetyl}amino}-2-oxoethyl]-5-({2-oxo-1-[(3R)-pyrrolidin-3-yl]-2,5-dihydro-1H-pyrrol-3-yl}methyl)-3,6-dihydro-2H-1,3-thiazine-4-carboxylic acid (CCD ID: RB6) (formula: C₂₀H₂₄N₈O₆S₂) (labeled as "Ligand of Interest" by depositor).



Mol	Chain	Residues	Atoms					ZeroOcc	AltConf
2	A	1	Total	C	N	O	S	0	0
			36	20	8	6	2		

- Molecule 3 is CHLORIDE ION (CCD ID: CL) (formula: Cl).

Mol	Chain	Residues	Atoms		ZeroOcc	AltConf
3	A	2	Total	Cl	0	0
			2	2		

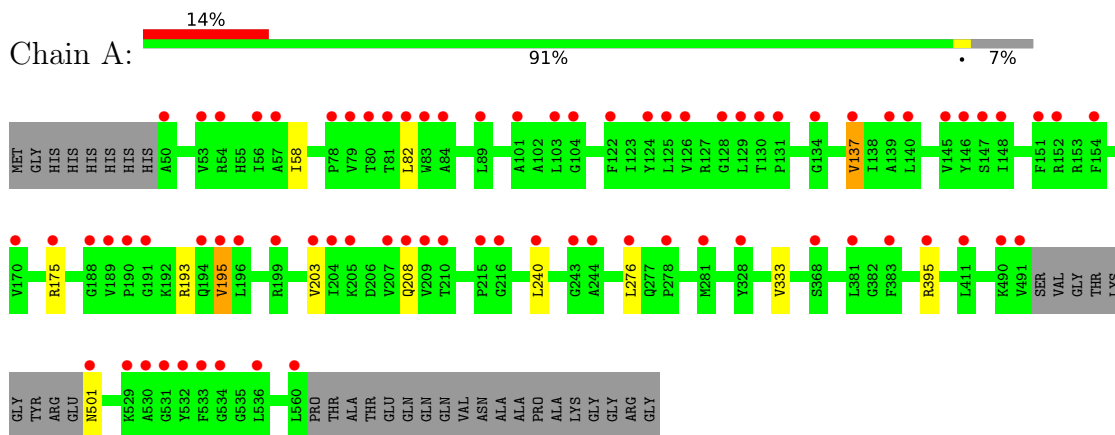
- Molecule 4 is water.

Mol	Chain	Residues	Atoms		ZeroOcc	AltConf
4	A	242	Total	O	0	0
			242	242		

3 Residue-property plots [i](#)

These plots are drawn for all protein, RNA, DNA and oligosaccharide chains in the entry. The first graphic for a chain summarises the proportions of the various outlier classes displayed in the second graphic. The second graphic shows the sequence view annotated by issues in geometry and electron density. Residues are color-coded according to the number of geometric quality criteria for which they contain at least one outlier: green = 0, yellow = 1, orange = 2 and red = 3 or more. A red dot above a residue indicates a poor fit to the electron density ($RSRZ > 2$). Stretches of 2 or more consecutive residues without any outlier are shown as a green connector. Residues present in the sample, but not in the model, are shown in grey.

- Molecule 1: Peptidoglycan D,D-transpeptidase FtsI



4 Data and refinement statistics

Property	Value	Source
Space group	P 21 21 21	Depositor
Cell constants a, b, c, α , β , γ	68.19Å 83.74Å 89.92Å 90.00° 90.00° 90.00°	Depositor
Resolution (Å)	39.61 – 1.76 39.61 – 1.76	Depositor EDS
% Data completeness (in resolution range)	99.7 (39.61-1.76) 99.9 (39.61-1.76)	Depositor EDS
R_{merge}	0.04	Depositor
R_{sym}	(Not available)	Depositor
$\langle I/\sigma(I) \rangle$ ¹	1.81 (at 1.76Å)	Xtrriage
Refinement program	REFMAC 5.8.0135	Depositor
R, R_{free}	0.205 , 0.252 0.213 , 0.260	Depositor DCC
R_{free} test set	2592 reflections (4.99%)	wwPDB-VP
Wilson B-factor (Å ²)	32.1	Xtrriage
Anisotropy	0.104	Xtrriage
Bulk solvent k_{sol} (e/Å ³), B_{sol} (Å ²)	0.30 , 27.3	EDS
L-test for twinning ²	$\langle L \rangle = 0.50$, $\langle L^2 \rangle = 0.33$	Xtrriage
Estimated twinning fraction	No twinning to report.	Xtrriage
F_o, F_c correlation	0.96	EDS
Total number of atoms	4142	wwPDB-VP
Average B, all atoms (Å ²)	44.0	wwPDB-VP

Xtrriage's analysis on translational NCS is as follows: *The largest off-origin peak in the Patterson function is 5.90% of the height of the origin peak. No significant pseudotranslation is detected.*

¹Intensities estimated from amplitudes.

²Theoretical values of $\langle |L| \rangle$, $\langle L^2 \rangle$ for acentric reflections are 0.5, 0.333 respectively for untwinned datasets, and 0.375, 0.2 for perfectly twinned datasets.

5 Model quality [i](#)

5.1 Standard geometry [i](#)

Bond lengths and bond angles in the following residue types are not validated in this section: CL, RB6

The Z score for a bond length (or angle) is the number of standard deviations the observed value is removed from the expected value. A bond length (or angle) with $|Z| > 5$ is considered an outlier worth inspection. RMSZ is the root-mean-square of all Z scores of the bond lengths (or angles).

Mol	Chain	Bond lengths		Bond angles	
		RMSZ	# Z >5	RMSZ	# Z >5
1	A	0.56	0/3948	0.76	0/5353

There are no bond length outliers.

There are no bond angle outliers.

There are no chirality outliers.

There are no planarity outliers.

5.2 Too-close contacts [i](#)

In the following table, the Non-H and H(model) columns list the number of non-hydrogen atoms and hydrogen atoms in the chain respectively. The H(added) column lists the number of hydrogen atoms added and optimized by MolProbity. The Clashes column lists the number of clashes within the asymmetric unit, whereas Symm-Clashes lists symmetry-related clashes.

Mol	Chain	Non-H	H(model)	H(added)	Clashes	Symm-Clashes
1	A	3862	0	3931	5	0
2	A	36	0	22	1	0
3	A	2	0	0	0	0
4	A	242	0	0	0	0
All	All	4142	0	3953	5	0

The all-atom clashscore is defined as the number of clashes found per 1000 atoms (including hydrogen atoms). The all-atom clashscore for this structure is 1.

All (5) close contacts within the same asymmetric unit are listed below, sorted by their clash magnitude.

Atom-1	Atom-2	Interatomic distance (Å)	Clash overlap (Å)
1:A:82:LEU:HD13	1:A:137:VAL:HG11	1.87	0.55
1:A:195:VAL:HG13	1:A:203:VAL:HG13	1.93	0.50
1:A:58:ILE:HD11	1:A:193:ARG:HG3	1.94	0.48
1:A:333:VAL:HG21	2:A:601:RB6:H12	1.98	0.44
1:A:58:ILE:HD11	1:A:193:ARG:CG	2.50	0.41

There are no symmetry-related clashes.

5.3 Torsion angles [i](#)

5.3.1 Protein backbone [i](#)

In the following table, the Percentiles column shows the percent Ramachandran outliers of the chain as a percentile score with respect to all X-ray entries followed by that with respect to entries of similar resolution.

The Analysed column shows the number of residues for which the backbone conformation was analysed, and the total number of residues.

Mol	Chain	Analysed	Favoured	Allowed	Outliers	Percentiles
1	A	503/538 (94%)	491 (98%)	12 (2%)	0	100 100

There are no Ramachandran outliers to report.

5.3.2 Protein sidechains [i](#)

In the following table, the Percentiles column shows the percent sidechain outliers of the chain as a percentile score with respect to all X-ray entries followed by that with respect to entries of similar resolution.

The Analysed column shows the number of residues for which the sidechain conformation was analysed, and the total number of residues.

Mol	Chain	Analysed	Rotameric	Outliers	Percentiles
1	A	405/426 (95%)	397 (98%)	8 (2%)	48 29

All (8) residues with a non-rotameric sidechain are listed below:

Mol	Chain	Res	Type
1	A	137	VAL
1	A	175	ARG

Continued on next page...

Continued from previous page...

Mol	Chain	Res	Type
1	A	195	VAL
1	A	208	GLN
1	A	240	LEU
1	A	276	LEU
1	A	395	ARG
1	A	501	ASN

Sometimes sidechains can be flipped to improve hydrogen bonding and reduce clashes. All (5) such sidechains are listed below:

Mol	Chain	Res	Type
1	A	55	HIS
1	A	117	ASN
1	A	194	GLN
1	A	232	HIS
1	A	371	GLN

5.3.3 RNA [i](#)

There are no RNA molecules in this entry.

5.4 Non-standard residues in protein, DNA, RNA chains [i](#)

There are no non-standard protein/DNA/RNA residues in this entry.

5.5 Carbohydrates [i](#)

There are no oligosaccharides in this entry.

5.6 Ligand geometry [i](#)

Of 3 ligands modelled in this entry, 2 are monoatomic - leaving 1 for Mogul analysis.

In the following table, the Counts columns list the number of bonds (or angles) for which Mogul statistics could be retrieved, the number of bonds (or angles) that are observed in the model and the number of bonds (or angles) that are defined in the Chemical Component Dictionary. The Link column lists molecule types, if any, to which the group is linked. The Z score for a bond length (or angle) is the number of standard deviations the observed value is removed from the expected value. A bond length (or angle) with $|Z| > 2$ is considered an outlier worth inspection. RMSZ is the root-mean-square of all Z scores of the bond lengths (or angles).

Mol	Type	Chain	Res	Link	Bond lengths			Bond angles		
					Counts	RMSZ	# Z > 2	Counts	RMSZ	# Z > 2
2	RB6	A	601	1	34,39,39	3.56	14 (41%)	34,55,55	2.67	14 (41%)

In the following table, the Chirals column lists the number of chiral outliers, the number of chiral centers analysed, the number of these observed in the model and the number defined in the Chemical Component Dictionary. Similar counts are reported in the Torsion and Rings columns. '-' means no outliers of that kind were identified.

Mol	Type	Chain	Res	Link	Chirals	Torsions	Rings
2	RB6	A	601	1	-	7/24/65/65	0/3/4/4

All (14) bond length outliers are listed below:

Mol	Chain	Res	Type	Atoms	Z	Observed(Å)	Ideal(Å)
2	A	601	RB6	CAH-CAG	-10.00	1.35	1.49
2	A	601	RB6	CAY-CBB	-8.52	1.34	1.46
2	A	601	RB6	CAF-CAG	-8.07	1.37	1.51
2	A	601	RB6	CBD-SBE	-5.92	1.63	1.73
2	A	601	RB6	CAD-CBH	-5.49	1.39	1.48
2	A	601	RB6	CAR-SAS	-4.83	1.72	1.82
2	A	601	RB6	CAE-CAD	4.65	1.43	1.34
2	A	601	RB6	CAQ-CAG	3.89	1.41	1.33
2	A	601	RB6	CAR-CAE	-3.20	1.41	1.51
2	A	601	RB6	CAF-CAE	-3.07	1.43	1.50
2	A	601	RB6	CAY-CAW	2.91	1.54	1.48
2	A	601	RB6	CAL-CAM	-2.88	1.48	1.53
2	A	601	RB6	CAK-NAJ	2.19	1.51	1.47
2	A	601	RB6	OBI-CBH	-2.08	1.24	1.30

All (14) bond angle outliers are listed below:

Mol	Chain	Res	Type	Atoms	Z	Observed(°)	Ideal(°)
2	A	601	RB6	CAP-CAQ-CAG	-8.13	106.33	112.33
2	A	601	RB6	CAP-NAJ-CAH	-5.43	109.24	112.95
2	A	601	RB6	CAE-CAF-CAG	4.55	124.36	114.47
2	A	601	RB6	CBD-SBE-NBF	4.36	95.24	91.81
2	A	601	RB6	CAE-CAR-SAS	4.22	121.98	115.36
2	A	601	RB6	OBI-CBH-CAD	3.38	122.08	116.73
2	A	601	RB6	CAR-CAE-CAD	-3.03	116.58	123.94
2	A	601	RB6	OAI-CAH-NAJ	-2.86	121.85	125.79
2	A	601	RB6	CAL-CAM-NAN	-2.77	99.37	105.68
2	A	601	RB6	CAM-NAN-CAO	2.43	111.29	105.19
2	A	601	RB6	OAI-CAH-CAG	-2.25	125.58	127.97

Continued on next page...

Continued from previous page...

Mol	Chain	Res	Type	Atoms	Z	Observed(°)	Ideal(°)
2	A	601	RB6	CAL-CAK-CAO	-2.18	98.63	102.22
2	A	601	RB6	CB-CA-N	2.14	114.46	109.93
2	A	601	RB6	OBI-CBH-OBJ	-2.00	119.14	123.90

There are no chirality outliers.

All (7) torsion outliers are listed below:

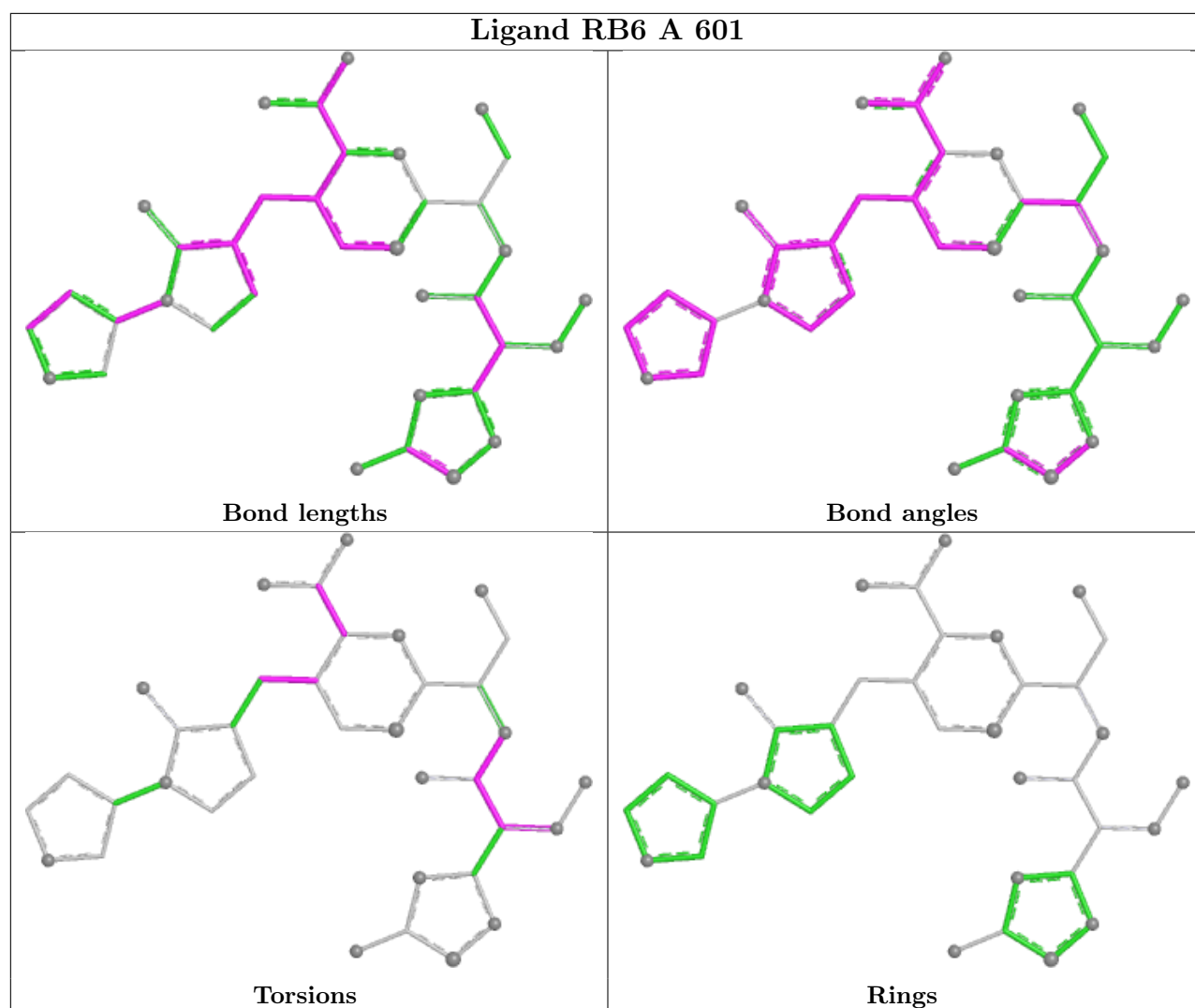
Mol	Chain	Res	Type	Atoms
2	A	601	RB6	CAW-CAY-NAZ-OBA
2	A	601	RB6	NAC-CAD-CBH-OBI
2	A	601	RB6	OAX-CAW-N-CA
2	A	601	RB6	CAD-CAE-CAF-CAG
2	A	601	RB6	OAX-CAW-CAY-NAZ
2	A	601	RB6	N-CAW-CAY-CBB
2	A	601	RB6	NAC-CAD-CBH-OBJ

There are no ring outliers.

1 monomer is involved in 1 short contact:

Mol	Chain	Res	Type	Clashes	Symm-Clashes
2	A	601	RB6	1	0

The following is a two-dimensional graphical depiction of Mogul quality analysis of bond lengths, bond angles, torsion angles, and ring geometry for all instances of the Ligand of Interest. In addition, ligands with molecular weight > 250 and outliers as shown on the validation Tables will also be included. For torsion angles, if less than 5% of the Mogul distribution of torsion angles is within 10 degrees of the torsion angle in question, then that torsion angle is considered an outlier. Any bond that is central to one or more torsion angles identified as an outlier by Mogul will be highlighted in the graph. For rings, the root-mean-square deviation (RMSD) between the ring in question and similar rings identified by Mogul is calculated over all ring torsion angles. If the average RMSD is greater than 60 degrees and the minimal RMSD between the ring in question and any Mogul-identified rings is also greater than 60 degrees, then that ring is considered an outlier. The outliers are highlighted in purple. The color gray indicates Mogul did not find sufficient equivalents in the CSD to analyse the geometry.



5.7 Other polymers [i](#)

There are no such residues in this entry.

5.8 Polymer linkage issues [i](#)

There are no chain breaks in this entry.

6 Fit of model and data

6.1 Protein, DNA and RNA chains

In the following table, the column labelled ‘#RSRZ> 2’ contains the number (and percentage) of RSRZ outliers, followed by percent RSRZ outliers for the chain as percentile scores relative to all X-ray entries and entries of similar resolution. The OWAB column contains the minimum, median, 95th percentile and maximum values of the occupancy-weighted average B-factor per residue. The column labelled ‘Q< 0.9’ lists the number of (and percentage) of residues with an average occupancy less than 0.9.

Mol	Chain	Analysed	<RSRZ>	#RSRZ>2	OWAB(Å ²)	Q<0.9
1	A	502/538 (93%)	0.90	77 (15%) 5 5	15, 37, 80, 114	5 (0%)

All (77) RSRZ outliers are listed below:

Mol	Chain	Res	Type	RSRZ
1	A	491	VAL	6.9
1	A	122	PHE	5.7
1	A	148	ILE	5.5
1	A	560	LEU	5.5
1	A	53	VAL	5.1
1	A	207	VAL	5.0
1	A	126	VAL	4.7
1	A	137	VAL	4.7
1	A	140	LEU	4.4
1	A	536	LEU	4.3
1	A	79	VAL	4.3
1	A	151	PHE	4.1
1	A	82	LEU	3.8
1	A	276	LEU	3.8
1	A	103	LEU	3.8
1	A	210	THR	3.7
1	A	81	THR	3.5
1	A	56	ILE	3.5
1	A	124	TYR	3.5
1	A	80	THR	3.5
1	A	278	PRO	3.5
1	A	146	TYR	3.5
1	A	130	THR	3.5
1	A	531	GLY	3.4
1	A	57	ALA	3.3
1	A	203	VAL	3.2
1	A	411	LEU	3.1

Continued on next page...

Continued from previous page...

Mol	Chain	Res	Type	RSRZ
1	A	534	GLY	3.1
1	A	83	TRP	3.1
1	A	532	TYR	3.1
1	A	129	LEU	3.1
1	A	195	VAL	3.0
1	A	328	TYR	3.0
1	A	131	PRO	3.0
1	A	101	ALA	3.0
1	A	125	LEU	3.0
1	A	170	VAL	3.0
1	A	204	ILE	2.9
1	A	501	ASN	2.9
1	A	188	GLY	2.9
1	A	533	PHE	2.8
1	A	191	GLY	2.8
1	A	104	GLY	2.8
1	A	89	LEU	2.8
1	A	175	ARG	2.7
1	A	395	ARG	2.7
1	A	244	ALA	2.7
1	A	383	PHE	2.7
1	A	208	GLN	2.7
1	A	209	VAL	2.6
1	A	194	GLN	2.6
1	A	490	LYS	2.6
1	A	243	GLY	2.6
1	A	50	ALA	2.6
1	A	529	LYS	2.5
1	A	196	LEU	2.5
1	A	152	ARG	2.4
1	A	199	ARG	2.4
1	A	216	GLY	2.4
1	A	281	MET	2.4
1	A	128	GLY	2.4
1	A	147	SER	2.3
1	A	139	ALA	2.3
1	A	240	LEU	2.3
1	A	134	GLY	2.3
1	A	215	PRO	2.3
1	A	54	ARG	2.3
1	A	145	VAL	2.2
1	A	205	LYS	2.2

Continued on next page...

Continued from previous page...

Mol	Chain	Res	Type	RSRZ
1	A	84	ALA	2.2
1	A	189	VAL	2.1
1	A	530	ALA	2.1
1	A	381	LEU	2.1
1	A	78	PRO	2.1
1	A	154	PHE	2.1
1	A	190	PRO	2.1
1	A	368	SER	2.0

6.2 Non-standard residues in protein, DNA, RNA chains [i](#)

There are no non-standard protein/DNA/RNA residues in this entry.

6.3 Carbohydrates [i](#)

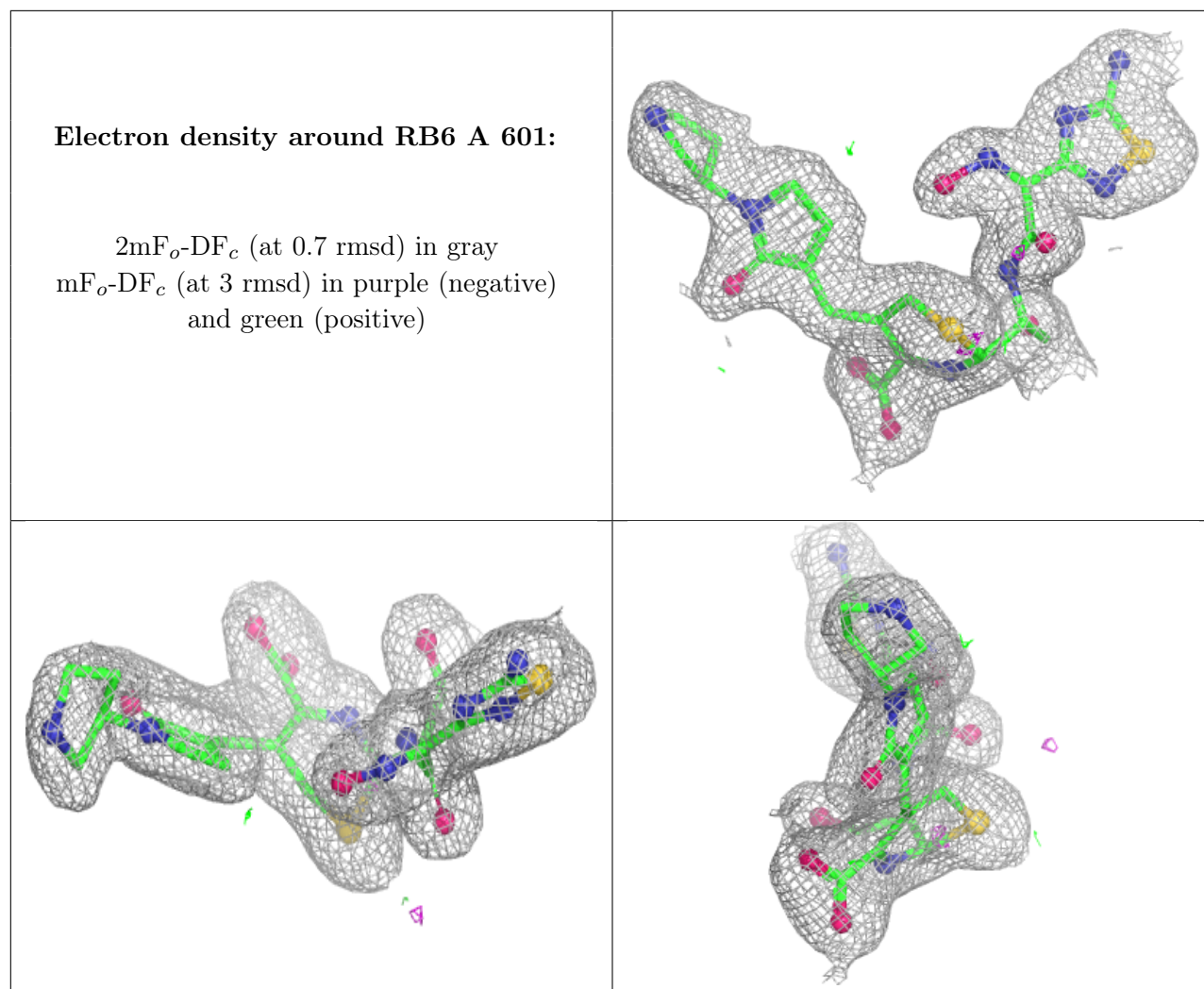
There are no oligosaccharides in this entry.

6.4 Ligands [i](#)

In the following table, the Atoms column lists the number of modelled atoms in the group and the number defined in the chemical component dictionary. The B-factors column lists the minimum, median, 95th percentile and maximum values of B factors of atoms in the group. The column labelled 'Q< 0.9' lists the number of atoms with occupancy less than 0.9.

Mol	Type	Chain	Res	Atoms	RSCC	RSR	B-factors(Å ²)	Q<0.9
3	CL	A	603	1/1	0.94	0.08	52,52,52,52	0
2	RB6	A	601	36/36	0.96	0.08	22,36,54,67	0
3	CL	A	602	1/1	0.97	0.06	48,48,48,48	0

The following is a graphical depiction of the model fit to experimental electron density of all instances of the Ligand of Interest. In addition, ligands with molecular weight > 250 and outliers as shown on the geometry validation Tables will also be included. Each fit is shown from different orientation to approximate a three-dimensional view.



6.5 Other polymers [\(i\)](#)

There are no such residues in this entry.