



# Full wwPDB X-ray Structure Validation Report ⓘ

Apr 19, 2026 – 04:56 AM UTC

PDB ID : 6VI4 / pdb\_00006vi4  
Title : Nanobody-Enabled Monitoring of Kappa Opioid Receptor States  
Authors : Che, T.; Roth, B.L.  
Deposited on : 2020-01-11  
Resolution : 3.30 Å(reported)

This is a Full wwPDB X-ray Structure Validation Report for a publicly released PDB entry.

We welcome your comments at [validation@mail.wwpdb.org](mailto:validation@mail.wwpdb.org)

A user guide is available at

<https://www.wwpdb.org/validation/2017/XrayValidationReportHelp>

with specific help available everywhere you see the ⓘ symbol.

The types of validation reports are described at

<http://www.wwpdb.org/validation/2017/FAQs#types>.

---

The following versions of software and data (see [references ⓘ](#)) were used in the production of this report:

MolProbity : 4-5-2 with Phenix2.0  
Mogul : 2022.3.0, CSD as543be (2022)  
Xtriage (Phenix) : 2.0  
EDS : 3.0  
Buster-report : wwPDB partial adaption of 1.1.7 (2018)  
Percentile statistics : 20250101.v01 (using entries in the PDB archive January 1st 2025)  
CCP4 : 9.0.010 (Gargrove)  
Density-Fitness : 1.0.12  
Ideal geometry (proteins) : Engh & Huber (2001)  
Ideal geometry (DNA, RNA) : Parkinson et al. (1996)  
Validation Pipeline (wwPDB-VP) : 2.49

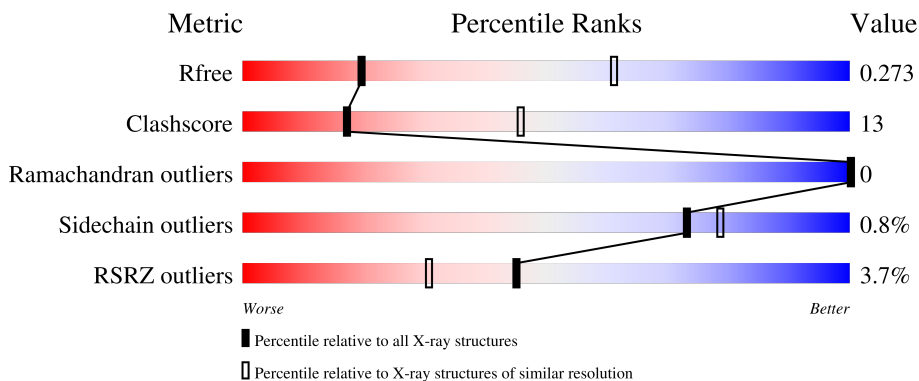
# 1 Overall quality at a glance

The following experimental techniques were used to determine the structure:

*X-RAY DIFFRACTION*

The reported resolution of this entry is 3.30 Å.

Percentile scores (ranging between 0-100) for global validation metrics of the entry are shown in the following graphic. The table shows the number of entries on which the scores are based.



Metric	Whole archive (#Entries)	Similar resolution (#Entries, resolution range(Å))
$R_{free}$	180053	1169 (3.32-3.28)
Clashscore	190562	1209 (3.32-3.28)
Ramachandran outliers	187476	1188 (3.32-3.28)
Sidechain outliers	187428	1187 (3.32-3.28)
RSRZ outliers	180081	1169 (3.32-3.28)

The table below summarises the geometric issues observed across the polymeric chains and their fit to the electron density. The red, orange, yellow and green segments of the lower bar indicate the fraction of residues that contain outliers for  $\geq 3$ , 2, 1 and 0 types of geometric quality criteria respectively. A grey segment represents the fraction of residues that are not modelled. The numeric value for each fraction is indicated below the corresponding segment, with a dot representing fractions  $\leq 5\%$ . The upper red bar (where present) indicates the fraction of residues that have poor fit to the electron density. The numeric value is given above the bar.

Mol	Chain	Length	Quality of chain
1	A	307	 4% 70% 21% 8%
1	B	307	 3% 72% 18% 10%
2	C	133	 4% 74% 14% 11%
2	D	133	 2% 65% 23% 12%

## 2 Entry composition [i](#)

There are 4 unique types of molecules in this entry. The entry contains 6047 atoms, of which 0 are hydrogens and 0 are deuteriums.

In the tables below, the ZeroOcc column contains the number of atoms modelled with zero occupancy, the AltConf column contains the number of residues with at least one atom in alternate conformation and the Trace column contains the number of residues modelled with at most 2 atoms.

- Molecule 1 is a protein called Kappa opioid receptor.

Mol	Chain	Residues	Atoms					ZeroOcc	AltConf	Trace
			Total	C	N	O	S			
1	A	283	Total	C	N	O	S	0	0	0
			2127	1413	339	356	19			
1	B	276	Total	C	N	O	S	0	0	0
			2100	1397	335	349	19			

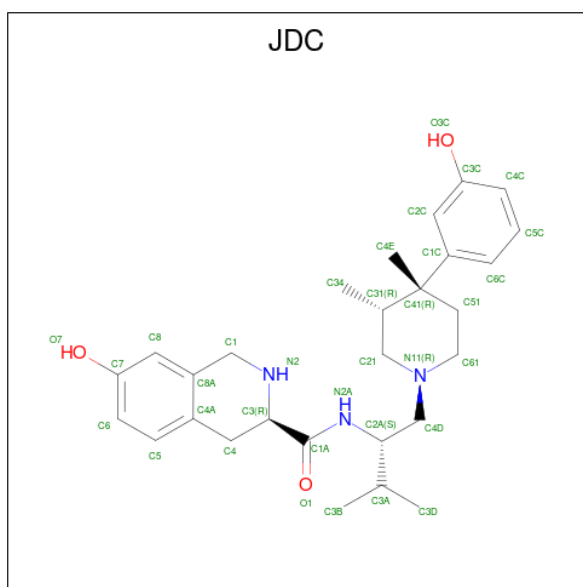
There are 6 discrepancies between the modelled and reference sequences:

Chain	Residue	Modelled	Actual	Comment	Reference
A	52	GLY	-	expression tag	UNP P41145
A	53	SER	-	expression tag	UNP P41145
A	135	LEU	ILE	engineered mutation	UNP P41145
B	52	GLY	-	expression tag	UNP P41145
B	53	SER	-	expression tag	UNP P41145
B	135	LEU	ILE	engineered mutation	UNP P41145

- Molecule 2 is a protein called Nanobody 6.

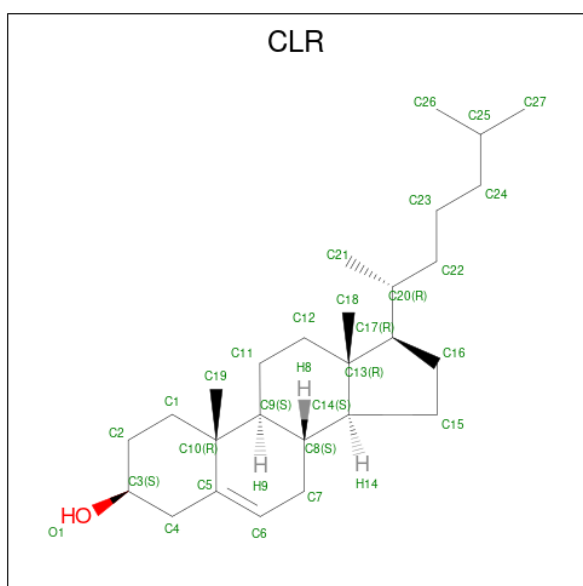
Mol	Chain	Residues	Atoms					ZeroOcc	AltConf	Trace
			Total	C	N	O	S			
2	C	118	Total	C	N	O	S	0	0	0
			857	532	150	171	4			
2	D	117	Total	C	N	O	S	0	0	0
			867	542	150	171	4			

- Molecule 3 is (3R)-7-hydroxy-N-[(2S)-1-[(3R,4R)-4-(3-hydroxyphenyl)-3,4-dimethylpiperidin-1-yl]-3-methylbutan-2-yl]-1,2,3,4-tetrahydroisoquinoline-3-carboxamide (CCD ID: JDC) (formula: C<sub>28</sub>H<sub>39</sub>N<sub>3</sub>O<sub>3</sub>) (labeled as "Ligand of Interest" by depositor).



Mol	Chain	Residues	Atoms			ZeroOcc	AltConf	
3	A	1	Total	C	N	O	0	0
			34	28	3	3		
3	B	1	Total	C	N	O	0	0
			34	28	3	3		

- Molecule 4 is CHOLESTEROL (CCD ID: CLR) (formula:  $C_{27}H_{46}O$ ).

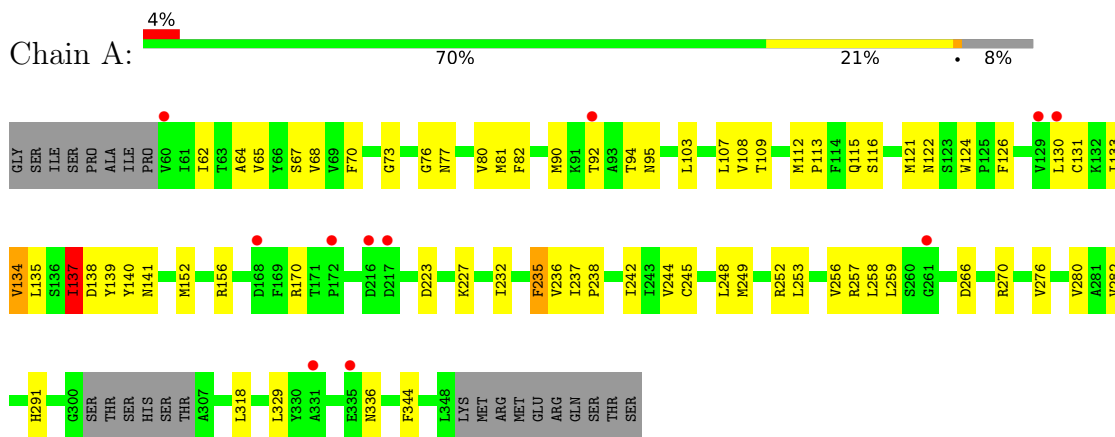


Mol	Chain	Residues	Atoms			ZeroOcc	AltConf
4	B	1	Total	C	O	0	0
			28	27	1		

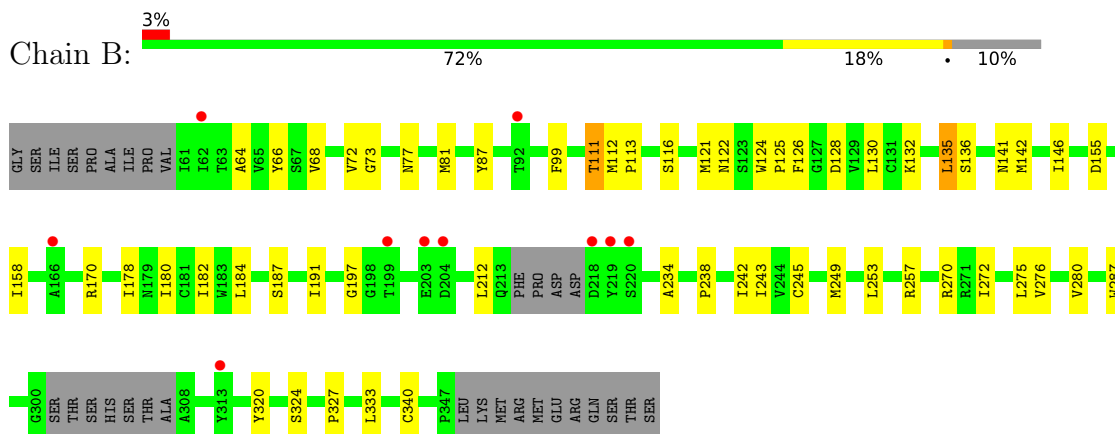
### 3 Residue-property plots

These plots are drawn for all protein, RNA, DNA and oligosaccharide chains in the entry. The first graphic for a chain summarises the proportions of the various outlier classes displayed in the second graphic. The second graphic shows the sequence view annotated by issues in geometry and electron density. Residues are color-coded according to the number of geometric quality criteria for which they contain at least one outlier: green = 0, yellow = 1, orange = 2 and red = 3 or more. A red dot above a residue indicates a poor fit to the electron density ( $RSRZ > 2$ ). Stretches of 2 or more consecutive residues without any outlier are shown as a green connector. Residues present in the sample, but not in the model, are shown in grey.

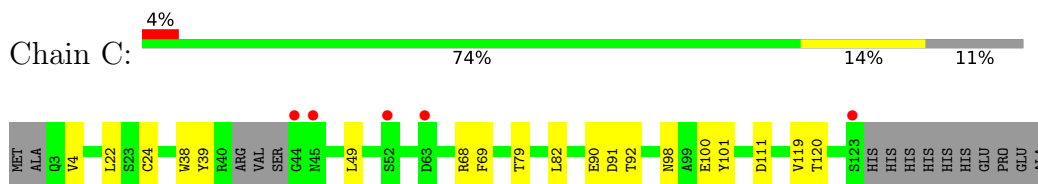
- Molecule 1: Kappa opioid receptor



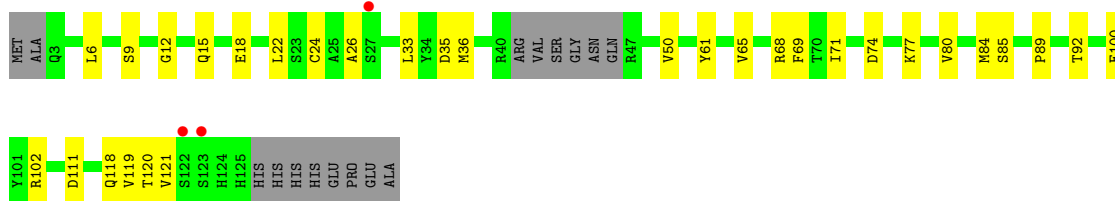
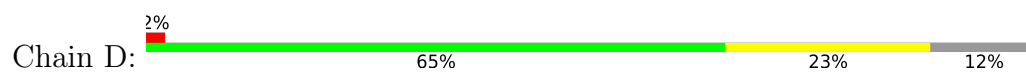
- Molecule 1: Kappa opioid receptor



- Molecule 2: Nanobody 6



- Molecule 2: Nanobody 6



## 4 Data and refinement statistics

Property	Value	Source
Space group	P 21 2 21	Depositor
Cell constants a, b, c, $\alpha$ , $\beta$ , $\gamma$	102.39Å 108.19Å 155.10Å 90.00° 90.00° 90.00°	Depositor
Resolution (Å)	30.01 – 3.30 30.01 – 3.30	Depositor EDS
% Data completeness (in resolution range)	98.8 (30.01-3.30) 98.8 (30.01-3.30)	Depositor EDS
$R_{merge}$	0.18	Depositor
$R_{sym}$	(Not available)	Depositor
$\langle I/\sigma(I) \rangle$ <sup>1</sup>	1.57 (at 3.31Å)	Xtrriage
Refinement program	PHENIX 1.17.1_3660	Depositor
R, $R_{free}$	0.242 , 0.271 0.245 , 0.273	Depositor DCC
$R_{free}$ test set	1283 reflections (4.81%)	wwPDB-VP
Wilson B-factor (Å <sup>2</sup> )	102.4	Xtrriage
Anisotropy	0.205	Xtrriage
Bulk solvent $k_{sol}$ (e/Å <sup>3</sup> ), $B_{sol}$ (Å <sup>2</sup> )	0.29 , 53.2	EDS
L-test for twinning <sup>2</sup>	$\langle  L  \rangle = 0.47$ , $\langle L^2 \rangle = 0.30$	Xtrriage
Estimated twinning fraction	No twinning to report.	Xtrriage
$F_o, F_c$ correlation	0.91	EDS
Total number of atoms	6047	wwPDB-VP
Average B, all atoms (Å <sup>2</sup> )	87.0	wwPDB-VP

Xtrriage's analysis on translational NCS is as follows: *The largest off-origin peak in the Patterson function is 7.69% of the height of the origin peak. No significant pseudotranslation is detected.*

<sup>1</sup>Intensities estimated from amplitudes.

<sup>2</sup>Theoretical values of  $\langle |L| \rangle$ ,  $\langle L^2 \rangle$  for acentric reflections are 0.5, 0.333 respectively for untwinned datasets, and 0.375, 0.2 for perfectly twinned datasets.

## 5 Model quality i

### 5.1 Standard geometry i

Bond lengths and bond angles in the following residue types are not validated in this section: CLR, JDC

The Z score for a bond length (or angle) is the number of standard deviations the observed value is removed from the expected value. A bond length (or angle) with  $|Z| > 5$  is considered an outlier worth inspection. RMSZ is the root-mean-square of all Z scores of the bond lengths (or angles).

Mol	Chain	Bond lengths		Bond angles	
		RMSZ	# Z  >5	RMSZ	# Z  >5
1	A	0.59	1/2177 (0.0%)	0.90	8/2984 (0.3%)
1	B	0.65	1/2146 (0.0%)	0.94	3/2932 (0.1%)
2	C	0.47	0/871	0.72	0/1183
2	D	0.44	0/881	0.69	0/1194
All	All	0.58	2/6075 (0.0%)	0.86	11/8293 (0.1%)

All (2) bond length outliers are listed below:

Mol	Chain	Res	Type	Atoms	Z	Observed(Å)	Ideal(Å)
1	A	232	ILE	C-O	-5.46	1.18	1.24
1	B	238	PRO	C-O	-5.38	1.17	1.24

All (11) bond angle outliers are listed below:

Mol	Chain	Res	Type	Atoms	Z	Observed(°)	Ideal(°)
1	B	128	ASP	N-CA-C	-7.93	103.73	113.41
1	A	236	VAL	CA-C-N	-6.71	109.72	122.13
1	A	236	VAL	C-N-CA	-6.71	109.72	122.13
1	A	232	ILE	CA-C-O	-6.03	114.36	121.05
1	B	135	LEU	N-CA-C	-5.71	105.14	111.36
1	A	235	PHE	CA-C-N	-5.58	115.21	121.85
1	A	235	PHE	C-N-CA	-5.58	115.21	121.85
1	A	236	VAL	CA-C-O	-5.47	114.08	118.90
1	A	137	ILE	N-CA-C	-5.39	105.99	113.00
1	A	109	THR	CA-CB-OG1	-5.20	101.80	109.60
1	B	111	THR	N-CA-C	-5.02	106.08	113.61

There are no chirality outliers.

There are no planarity outliers.

## 5.2 Too-close contacts

In the following table, the Non-H and H(model) columns list the number of non-hydrogen atoms and hydrogen atoms in the chain respectively. The H(added) column lists the number of hydrogen atoms added and optimized by MolProbity. The Clashes column lists the number of clashes within the asymmetric unit, whereas Symm-Clashes lists symmetry-related clashes.

Mol	Chain	Non-H	H(model)	H(added)	Clashes	Symm-Clashes
1	A	2127	0	2065	70	0
1	B	2100	0	2090	42	0
2	C	857	0	751	11	0
2	D	867	0	798	19	0
3	A	34	0	38	13	0
3	B	34	0	38	3	0
4	B	28	0	46	2	0
All	All	6047	0	5826	150	0

The all-atom clashscore is defined as the number of clashes found per 1000 atoms (including hydrogen atoms). The all-atom clashscore for this structure is 13.

All (150) close contacts within the same asymmetric unit are listed below, sorted by their clash magnitude.

Atom-1	Atom-2	Interatomic distance (Å)	Clash overlap (Å)
1:A:130:LEU:O	1:A:134:VAL:HG22	1.47	1.13
1:A:108:VAL:HG11	1:A:141:ASN:CG	1.75	1.12
1:A:108:VAL:CG1	1:A:141:ASN:CG	2.31	1.02
1:A:235:PHE:HB2	1:A:291:HIS:CE1	2.03	0.94
1:A:122:ASN:O	1:A:122:ASN:ND2	2.08	0.87
1:A:124:TRP:HH2	1:A:134:VAL:HG21	1.40	0.85
1:A:115:GLN:NE2	1:A:115:GLN:O	2.07	0.85
1:A:124:TRP:CH2	1:A:134:VAL:HG21	2.14	0.82
1:A:130:LEU:O	1:A:134:VAL:CG2	2.27	0.82
1:B:142:MET:CE	1:B:287:TRP:HZ3	1.93	0.81
3:A:401:JDC:H29	3:A:401:JDC:H32	1.62	0.81
1:B:155:ASP:CG	1:B:170:ARG:HH21	1.91	0.78
1:A:237:ILE:N	1:A:238:PRO:CD	2.45	0.77
1:B:121:MET:HE1	1:B:125:PRO:HB3	1.68	0.76
1:A:237:ILE:H	1:A:238:PRO:HD2	1.52	0.74
1:A:108:VAL:HG11	1:A:141:ASN:OD1	1.88	0.73
1:B:132:LYS:NZ	1:B:197:GLY:O	2.21	0.72
1:A:237:ILE:N	1:A:238:PRO:HD2	2.05	0.72
1:A:103:LEU:O	1:A:107:LEU:HD23	1.90	0.71
1:B:81:MET:HG2	1:B:99:PHE:CE2	2.26	0.70

*Continued on next page...*

*Continued from previous page...*

Atom-1	Atom-2	Interatomic distance (Å)	Clash overlap (Å)
1:A:133:ILE:O	1:A:137:ILE:HG13	1.91	0.70
1:A:108:VAL:CG1	1:A:141:ASN:CB	2.69	0.70
1:A:266:ASP:OD2	1:A:270:ARG:NH1	2.25	0.69
3:A:401:JDC:N11	3:A:401:JDC:H35	2.06	0.68
1:A:237:ILE:H	1:A:238:PRO:CD	2.06	0.67
2:D:33:LEU:HD13	2:D:36:MET:HE2	1.76	0.67
1:A:115:GLN:HB2	3:A:401:JDC:C34	2.26	0.65
1:B:77:ASN:O	1:B:81:MET:HB2	1.96	0.65
1:A:81:MET:CE	1:A:103:LEU:HD13	2.27	0.65
1:A:252:ARG:HE	1:A:256:VAL:HG21	1.61	0.65
1:A:108:VAL:HG11	1:A:141:ASN:ND2	2.11	0.65
1:B:135:LEU:HD12	1:B:197:GLY:HA3	1.79	0.64
3:A:401:JDC:H29	3:A:401:JDC:C61	2.28	0.62
1:B:142:MET:HE3	1:B:287:TRP:HZ3	1.64	0.62
1:B:124:TRP:CZ3	3:B:401:JDC:C4C	2.83	0.62
2:D:74:ASP:OD2	2:D:77:LYS:HD3	2.00	0.62
1:B:111:THR:HG1	1:B:320:TYR:HH	1.48	0.61
1:A:108:VAL:CG1	1:A:141:ASN:ND2	2.64	0.61
2:C:92:THR:HG23	2:C:120:THR:HA	1.82	0.61
1:A:235:PHE:HB2	1:A:291:HIS:ND1	2.16	0.60
1:A:112:MET:N	1:A:113:PRO:HD2	2.16	0.60
2:D:50:VAL:HG23	2:D:65:VAL:HG21	1.82	0.60
1:B:275:LEU:HD13	1:B:333:LEU:HB2	1.84	0.60
2:D:92:THR:HG23	2:D:120:THR:HA	1.82	0.59
3:A:401:JDC:C1A	3:A:401:JDC:H19	2.33	0.57
1:B:142:MET:HE2	1:B:287:TRP:HZ3	1.67	0.57
1:A:242:ILE:HG21	1:A:280:VAL:HG11	1.88	0.56
1:A:257:ARG:O	2:D:102:ARG:NH2	2.39	0.56
1:B:142:MET:HE2	1:B:287:TRP:CZ3	2.41	0.56
1:A:81:MET:HE1	1:A:103:LEU:HD13	1.87	0.56
1:B:180:ILE:O	1:B:184:LEU:HG	2.07	0.55
1:A:65:VAL:HA	1:A:68:VAL:HG23	1.88	0.55
1:B:142:MET:CE	1:B:287:TRP:CZ3	2.83	0.54
1:A:92:THR:HG22	1:A:94:THR:H	1.72	0.54
1:B:324:SER:O	1:B:327:PRO:HD2	2.08	0.53
2:D:15:GLN:O	2:D:18:GLU:HB2	2.08	0.53
1:A:257:ARG:NH2	2:D:100:GLU:OE1	2.41	0.53
1:A:282:VAL:HG21	1:A:329:LEU:HD21	1.91	0.53
1:B:253:LEU:O	1:B:270:ARG:NH2	2.42	0.53
1:A:108:VAL:HG12	1:A:141:ASN:CB	2.40	0.52
2:D:89:PRO:HA	2:D:121:VAL:HB	1.93	0.51

*Continued on next page...*

*Continued from previous page...*

Atom-1	Atom-2	Interatomic distance (Å)	Clash overlap (Å)
1:A:138:ASP:OD2	3:A:401:JDC:H35	2.11	0.51
1:B:178:ILE:O	1:B:182:ILE:HG13	2.11	0.50
1:A:62:ILE:HA	1:A:65:VAL:HG12	1.93	0.50
1:B:155:ASP:OD2	1:B:170:ARG:NH2	2.41	0.50
1:A:137:ILE:HG22	1:A:137:ILE:O	2.11	0.50
2:D:68:ARG:HB3	2:D:85:SER:O	2.10	0.50
2:D:6:LEU:HD23	2:D:26:ALA:HA	1.93	0.49
2:C:90:GLU:OE1	2:C:90:GLU:N	2.37	0.49
1:B:64:ALA:O	1:B:68:VAL:HG23	2.12	0.49
1:B:242:ILE:HG21	1:B:280:VAL:HG11	1.93	0.49
1:A:126:PHE:HB3	1:A:130:LEU:HD12	1.94	0.49
1:A:76:GLY:O	1:A:80:VAL:HG23	2.12	0.48
1:A:115:GLN:HB2	3:A:401:JDC:H28	1.93	0.48
1:B:257:ARG:NH1	2:C:100:GLU:OE1	2.46	0.48
1:A:112:MET:HE2	1:A:112:MET:HB3	1.79	0.48
2:D:100:GLU:HG2	2:D:111:ASP:HB3	1.94	0.48
1:B:124:TRP:CZ3	3:B:401:JDC:C5C	2.97	0.47
2:C:4:VAL:HG21	2:C:101:TYR:CZ	2.49	0.47
2:D:69:PHE:CD1	2:D:84:MET:HA	2.49	0.47
1:B:66:TYR:CZ	1:B:112:MET:HE2	2.49	0.47
1:A:107:LEU:N	1:A:107:LEU:CD2	2.77	0.47
2:C:39:TYR:CD1	2:C:49:LEU:HA	2.49	0.47
1:A:156:ARG:HH21	1:A:170:ARG:NH2	2.11	0.47
4:B:402:CLR:H162	4:B:402:CLR:H221	1.59	0.47
1:A:131:CYS:O	1:A:135:LEU:HB2	2.15	0.46
1:A:256:VAL:HG11	1:A:259:LEU:HD23	1.96	0.46
1:B:73:GLY:O	1:B:77:ASN:ND2	2.42	0.46
3:A:401:JDC:H19	3:A:401:JDC:O1	2.16	0.46
1:B:121:MET:CE	1:B:125:PRO:HB3	2.42	0.46
1:A:64:ALA:O	1:A:67:SER:N	2.48	0.46
1:A:152:MET:CE	1:A:276:VAL:HG22	2.45	0.46
1:B:87:TYR:HD2	1:B:340:CYS:HG	1.63	0.46
1:A:82:PHE:HE2	1:A:344:PHE:CE1	2.34	0.45
1:A:121:MET:HE2	1:A:121:MET:HB3	1.85	0.45
1:A:108:VAL:CG1	1:A:141:ASN:HB2	2.45	0.45
1:B:126:PHE:HB3	1:B:130:LEU:HD12	1.98	0.45
1:B:245:CYS:O	1:B:249:MET:HG3	2.16	0.45
1:A:90:MET:HE3	1:A:336:ASN:HB3	1.98	0.45
2:C:69:PHE:HB3	2:C:82:LEU:HD11	1.97	0.45
2:D:65:VAL:HG11	2:D:69:PHE:HB2	1.98	0.45
2:D:24:CYS:HB3	2:D:80:VAL:HG12	1.99	0.45

*Continued on next page...*

*Continued from previous page...*

Atom-1	Atom-2	Interatomic distance (Å)	Clash overlap (Å)
1:A:223:ASP:O	1:A:227:LYS:HG2	2.17	0.45
1:A:113:PRO:O	1:A:116:SER:N	2.50	0.45
1:B:68:VAL:O	1:B:72:VAL:HG23	2.17	0.44
2:C:98:ASN:ND2	2:C:111:ASP:OD1	2.49	0.44
1:A:70:PHE:CD1	1:A:70:PHE:O	2.70	0.44
1:A:248:LEU:HD12	1:A:248:LEU:N	2.32	0.44
3:A:401:JDC:H13	3:A:401:JDC:H33	1.55	0.44
3:A:401:JDC:C34	3:A:401:JDC:C61	2.87	0.44
1:B:135:LEU:HD23	1:B:135:LEU:HA	1.73	0.44
1:B:197:GLY:HA2	1:B:212:LEU:HA	1.99	0.44
2:D:61:TYR:CE1	2:D:71:ILE:HG22	2.53	0.44
1:A:92:THR:HB	1:A:95:ASN:H	1.82	0.44
1:A:235:PHE:O	1:A:235:PHE:CG	2.70	0.44
1:B:81:MET:HG2	1:B:99:PHE:CZ	2.52	0.44
2:D:9:SER:O	2:D:22:LEU:HA	2.17	0.44
2:C:92:THR:HG23	2:C:119:VAL:O	2.17	0.44
1:A:65:VAL:HA	1:A:68:VAL:CG2	2.48	0.43
1:B:66:TYR:CE1	1:B:116:SER:HB3	2.53	0.43
1:B:122:ASN:O	1:B:122:ASN:ND2	2.50	0.43
1:A:73:GLY:O	1:A:77:ASN:ND2	2.33	0.43
1:A:244:VAL:O	1:A:245:CYS:C	2.61	0.42
1:A:122:ASN:C	1:A:122:ASN:HD22	2.15	0.42
1:A:235:PHE:CG	1:A:291:HIS:ND1	2.87	0.42
2:D:118:GLN:HG3	2:D:119:VAL:N	2.35	0.42
1:B:242:ILE:O	1:B:243:ILE:C	2.63	0.42
1:A:135:LEU:HD23	1:A:135:LEU:HA	1.73	0.41
1:B:126:PHE:CD1	1:B:126:PHE:N	2.88	0.41
2:D:12:GLY:N	2:D:118:GLN:O	2.52	0.41
2:C:68:ARG:NH1	2:C:91:ASP:OD2	2.45	0.41
1:A:70:PHE:CD1	1:A:70:PHE:C	2.95	0.41
2:C:24:CYS:C	2:C:79:THR:HG23	2.46	0.41
1:A:112:MET:N	1:A:113:PRO:CD	2.82	0.41
1:A:135:LEU:O	1:A:139:TYR:HD1	2.04	0.41
1:A:318:LEU:HD23	1:A:318:LEU:HA	1.88	0.41
2:D:35:ASP:H	2:D:100:GLU:HB2	1.85	0.41
2:C:22:LEU:HB3	2:C:38:TRP:CH2	2.55	0.41
1:A:138:ASP:OD2	3:A:401:JDC:C4E	2.69	0.41
1:A:152:MET:HE2	1:A:276:VAL:HG13	2.03	0.41
1:B:187:SER:O	1:B:191:ILE:N	2.47	0.41
3:B:401:JDC:H33	3:B:401:JDC:H35	1.87	0.41
1:A:249:MET:O	1:A:253:LEU:HG	2.20	0.41

*Continued on next page...*

Continued from previous page...

Atom-1	Atom-2	Interatomic distance (Å)	Clash overlap (Å)
1:B:146:ILE:HG12	1:B:234:ALA:O	2.21	0.41
1:B:272:ILE:O	1:B:276:VAL:HG23	2.21	0.40
3:A:401:JDC:H32	3:A:401:JDC:C34	2.39	0.40
1:B:112:MET:N	1:B:113:PRO:HD2	2.35	0.40
1:A:258:LEU:HD23	1:A:258:LEU:HA	1.94	0.40
3:A:401:JDC:H37	3:A:401:JDC:H31	1.82	0.40
1:B:158:ILE:HD11	4:B:402:CLR:H12	2.03	0.40

There are no symmetry-related clashes.

## 5.3 Torsion angles [i](#)

### 5.3.1 Protein backbone [i](#)

In the following table, the Percentiles column shows the percent Ramachandran outliers of the chain as a percentile score with respect to all X-ray entries followed by that with respect to entries of similar resolution.

The Analysed column shows the number of residues for which the backbone conformation was analysed, and the total number of residues.

Mol	Chain	Analysed	Favoured	Allowed	Outliers	Percentiles	
1	A	279/307 (91%)	263 (94%)	16 (6%)	0	100	100
1	B	270/307 (88%)	262 (97%)	8 (3%)	0	100	100
2	C	114/133 (86%)	108 (95%)	6 (5%)	0	100	100
2	D	113/133 (85%)	110 (97%)	3 (3%)	0	100	100
All	All	776/880 (88%)	743 (96%)	33 (4%)	0	100	100

There are no Ramachandran outliers to report.

### 5.3.2 Protein sidechains [i](#)

In the following table, the Percentiles column shows the percent sidechain outliers of the chain as a percentile score with respect to all X-ray entries followed by that with respect to entries of similar resolution.

The Analysed column shows the number of residues for which the sidechain conformation was analysed, and the total number of residues.

Mol	Chain	Analysed	Rotameric	Outliers	Percentiles	
1	A	215/280 (77%)	212 (99%)	3 (1%)	59	73
1	B	218/280 (78%)	216 (99%)	2 (1%)	70	78
2	C	77/109 (71%)	77 (100%)	0	100	100
2	D	84/109 (77%)	84 (100%)	0	100	100
All	All	594/778 (76%)	589 (99%)	5 (1%)	73	79

All (5) residues with a non-rotameric sidechain are listed below:

Mol	Chain	Res	Type
1	A	134	VAL
1	A	137	ILE
1	A	140	TYR
1	B	136	SER
1	B	141	ASN

Sometimes sidechains can be flipped to improve hydrogen bonding and reduce clashes. All (2) such sidechains are listed below:

Mol	Chain	Res	Type
1	A	122	ASN
1	A	141	ASN

### 5.3.3 RNA [i](#)

There are no RNA molecules in this entry.

### 5.4 Non-standard residues in protein, DNA, RNA chains [i](#)

There are no non-standard protein/DNA/RNA residues in this entry.

### 5.5 Carbohydrates [i](#)

There are no oligosaccharides in this entry.

### 5.6 Ligand geometry [i](#)

3 ligands are modelled in this entry.

In the following table, the Counts columns list the number of bonds (or angles) for which Mogul statistics could be retrieved, the number of bonds (or angles) that are observed in the model and the number of bonds (or angles) that are defined in the Chemical Component Dictionary. The Link column lists molecule types, if any, to which the group is linked. The Z score for a bond length (or angle) is the number of standard deviations the observed value is removed from the expected value. A bond length (or angle) with  $|Z| > 2$  is considered an outlier worth inspection. RMSZ is the root-mean-square of all Z scores of the bond lengths (or angles).

Mol	Type	Chain	Res	Link	Bond lengths			Bond angles		
					Counts	RMSZ	# Z  > 2	Counts	RMSZ	# Z  > 2
3	JDC	B	401	-	37,37,37	0.49	0	46,54,54	0.93	2 (4%)
3	JDC	A	401	-	37,37,37	0.61	0	46,54,54	0.89	3 (6%)
4	CLR	B	402	-	31,31,31	0.42	0	48,48,48	1.05	3 (6%)

In the following table, the Chirals column lists the number of chiral outliers, the number of chiral centers analysed, the number of these observed in the model and the number defined in the Chemical Component Dictionary. Similar counts are reported in the Torsion and Rings columns. '-' means no outliers of that kind were identified.

Mol	Type	Chain	Res	Link	Chirals	Torsions	Rings
3	JDC	B	401	-	-	10/22/47/47	0/4/4/4
3	JDC	A	401	-	-	7/22/47/47	0/4/4/4
4	CLR	B	402	-	-	6/10/68/68	0/4/4/4

There are no bond length outliers.

All (8) bond angle outliers are listed below:

Mol	Chain	Res	Type	Atoms	Z	Observed(°)	Ideal(°)
3	B	401	JDC	C4E-C41-C1C	-3.50	101.66	109.21
4	B	402	CLR	C10-C9-C8	-3.05	108.26	112.71
3	A	401	JDC	C34-C31-C41	-2.86	110.68	113.94
4	B	402	CLR	C1-C10-C9	2.78	112.42	108.74
3	A	401	JDC	C4-C3-C1A	-2.72	105.56	110.31
4	B	402	CLR	C14-C8-C9	2.60	112.49	109.09
3	B	401	JDC	C4E-C41-C31	-2.47	108.10	111.06
3	A	401	JDC	C61-C51-C41	-2.08	109.28	111.74

There are no chirality outliers.

All (23) torsion outliers are listed below:

Mol	Chain	Res	Type	Atoms
3	A	401	JDC	C2A-C4D-N11-C61

*Continued on next page...*

*Continued from previous page...*

Mol	Chain	Res	Type	Atoms
3	B	401	JDC	O1-C1A-C3-N2
3	B	401	JDC	N2A-C1A-C3-N2
3	B	401	JDC	C2A-C4D-N11-C61
3	B	401	JDC	C4D-C2A-C3A-C3D
3	B	401	JDC	N2A-C2A-C3A-C3D
3	B	401	JDC	C4D-C2A-C3A-C3B
3	B	401	JDC	N2A-C2A-C3A-C3B
4	B	402	CLR	C17-C20-C22-C23
4	B	402	CLR	C13-C17-C20-C22
4	B	402	CLR	C16-C17-C20-C22
4	B	402	CLR	C13-C17-C20-C21
3	A	401	JDC	N2A-C1A-C3-N2
3	B	401	JDC	N2A-C2A-C4D-N11
4	B	402	CLR	C16-C17-C20-C21
4	B	402	CLR	C23-C24-C25-C27
3	A	401	JDC	O1-C1A-C3-N2
3	A	401	JDC	C4D-C2A-N2A-C1A
3	A	401	JDC	C3A-C2A-N2A-C1A
3	A	401	JDC	O1-C1A-C3-C4
3	A	401	JDC	N2A-C1A-C3-C4
3	B	401	JDC	O1-C1A-C3-C4
3	B	401	JDC	N2A-C1A-C3-C4

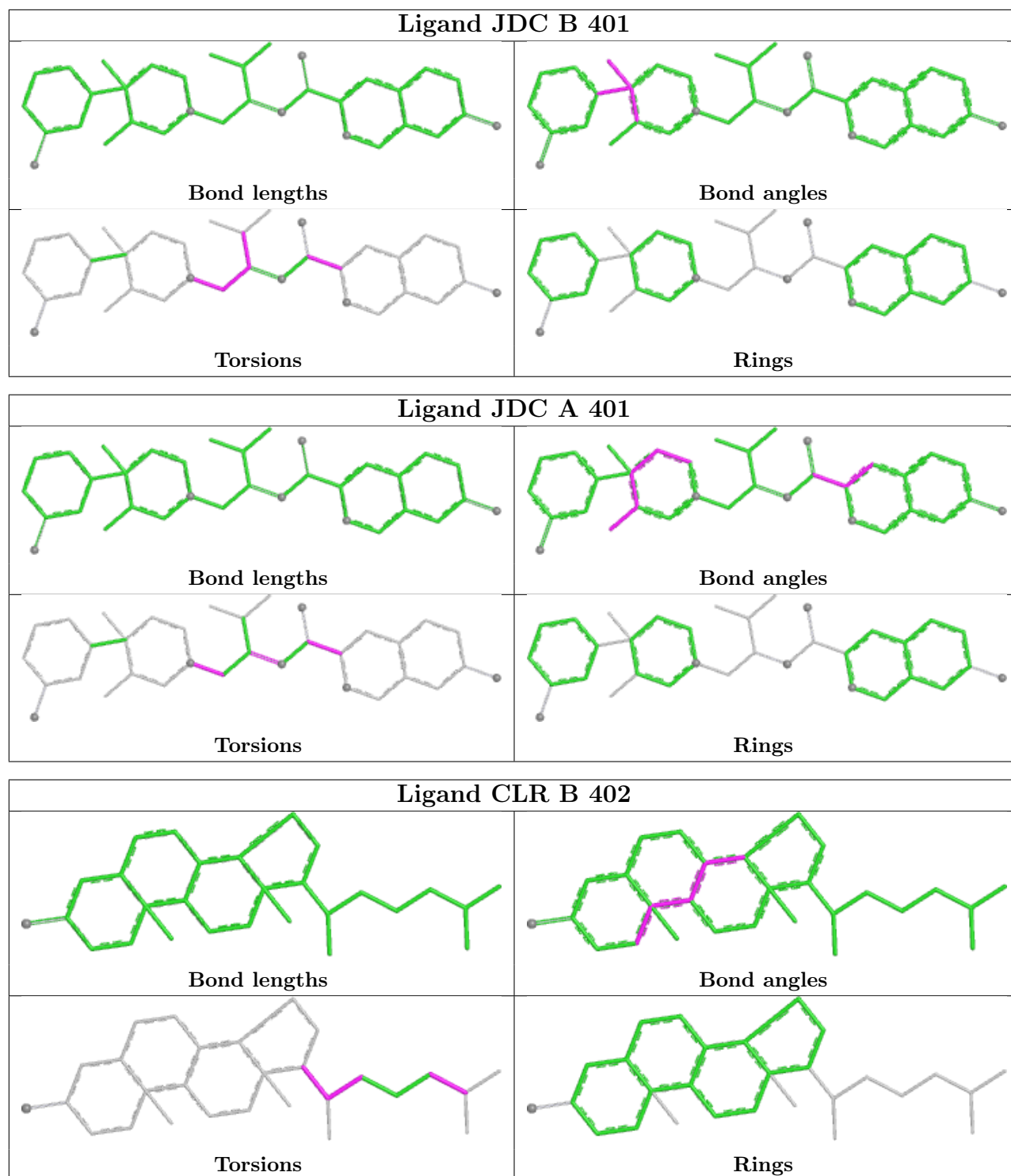
There are no ring outliers.

3 monomers are involved in 18 short contacts:

Mol	Chain	Res	Type	Clashes	Symm-Clashes
3	B	401	JDC	3	0
3	A	401	JDC	13	0
4	B	402	CLR	2	0

The following is a two-dimensional graphical depiction of Mogul quality analysis of bond lengths, bond angles, torsion angles, and ring geometry for all instances of the Ligand of Interest. In addition, ligands with molecular weight > 250 and outliers as shown on the validation Tables will also be included. For torsion angles, if less than 5% of the Mogul distribution of torsion angles is within 10 degrees of the torsion angle in question, then that torsion angle is considered an outlier. Any bond that is central to one or more torsion angles identified as an outlier by Mogul will be highlighted in the graph. For rings, the root-mean-square deviation (RMSD) between the ring in question and similar rings identified by Mogul is calculated over all ring torsion angles. If the average RMSD is greater than 60 degrees and the minimal RMSD between the ring in question and any Mogul-identified rings is also greater than 60 degrees, then that ring is considered an outlier. The outliers are highlighted in purple. The color gray indicates Mogul did not find sufficient

equivalents in the CSD to analyse the geometry.



## 5.7 Other polymers [\(i\)](#)

There are no such residues in this entry.

## 5.8 Polymer linkage issues

There are no chain breaks in this entry.

## 6 Fit of model and data

### 6.1 Protein, DNA and RNA chains

In the following table, the column labelled ‘#RSRZ > 2’ contains the number (and percentage) of RSRZ outliers, followed by percent RSRZ outliers for the chain as percentile scores relative to all X-ray entries and entries of similar resolution. The OWAB column contains the minimum, median, 95<sup>th</sup> percentile and maximum values of the occupancy-weighted average B-factor per residue. The column labelled ‘Q < 0.9’ lists the number of (and percentage) of residues with an average occupancy less than 0.9.

Mol	Chain	Analysed	<RSRZ>	#RSRZ>2	OWAB(Å <sup>2</sup> )	Q<0.9
1	A	283/307 (92%)	0.12	11 (3%) 43 29	57, 83, 115, 135	0
1	B	276/307 (89%)	0.24	10 (3%) 46 31	54, 88, 130, 151	0
2	C	118/133 (88%)	0.23	5 (4%) 40 26	73, 86, 107, 145	0
2	D	117/133 (87%)	0.23	3 (2%) 57 38	72, 86, 108, 117	0
All	All	794/880 (90%)	0.20	29 (3%) 45 31	54, 86, 118, 151	0

All (29) RSRZ outliers are listed below:

Mol	Chain	Res	Type	RSRZ
1	B	219	TYR	3.4
1	A	216	ASP	3.4
1	B	218	ASP	3.1
1	B	220	SER	2.9
1	A	217	ASP	2.9
1	A	168	ASP	2.8
1	A	261	GLY	2.8
2	C	123	SER	2.7
1	B	92	THR	2.7
1	B	62	ILE	2.6
1	A	172	PRO	2.6
1	A	60	VAL	2.6
2	D	122	SER	2.5
2	C	44	GLY	2.5
2	D	123	SER	2.5
1	A	130	LEU	2.4
2	D	27	SER	2.4
2	C	63	ASP	2.3
1	A	129	VAL	2.3
1	B	166	ALA	2.3
2	C	52	SER	2.3

*Continued on next page...*

*Continued from previous page...*

Mol	Chain	Res	Type	RSRZ
1	A	92	THR	2.3
2	C	45	ASN	2.3
1	A	335	GLU	2.2
1	B	204	ASP	2.2
1	B	199	THR	2.2
1	B	203	GLU	2.2
1	B	313	TYR	2.1
1	A	331	ALA	2.0

## 6.2 Non-standard residues in protein, DNA, RNA chains [i](#)

There are no non-standard protein/DNA/RNA residues in this entry.

## 6.3 Carbohydrates [i](#)

There are no oligosaccharides in this entry.

## 6.4 Ligands [i](#)

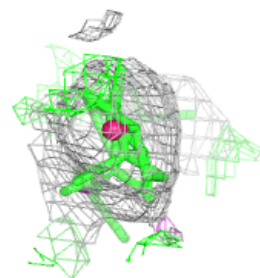
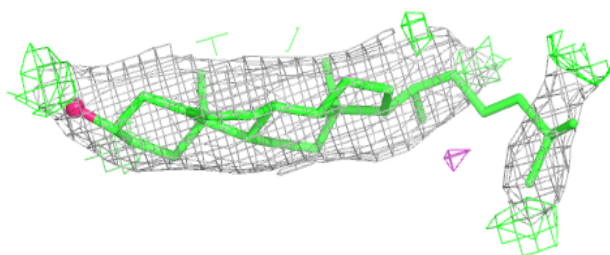
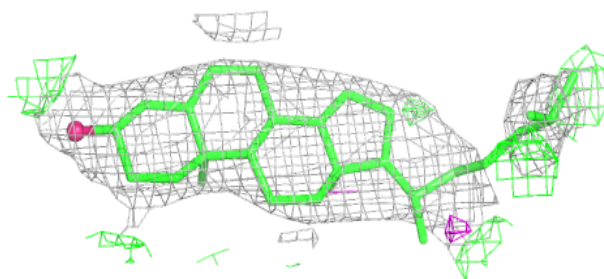
In the following table, the Atoms column lists the number of modelled atoms in the group and the number defined in the chemical component dictionary. The B-factors column lists the minimum, median, 95<sup>th</sup> percentile and maximum values of B factors of atoms in the group. The column labelled 'Q< 0.9' lists the number of atoms with occupancy less than 0.9.

Mol	Type	Chain	Res	Atoms	RSCC	RSR	B-factors(Å <sup>2</sup> )	Q<0.9
4	CLR	B	402	28/28	0.83	0.18	61,86,98,101	0
3	JDC	B	401	34/34	0.90	0.18	78,93,104,105	0
3	JDC	A	401	34/34	0.94	0.13	70,79,87,92	0

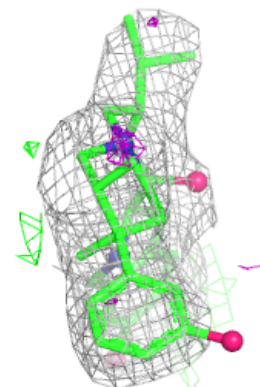
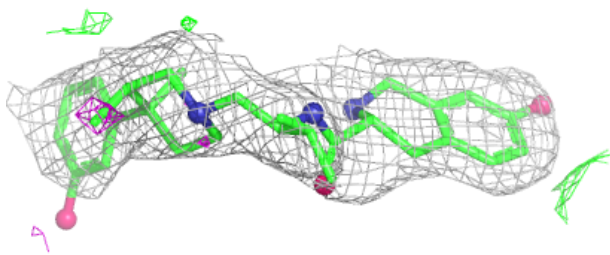
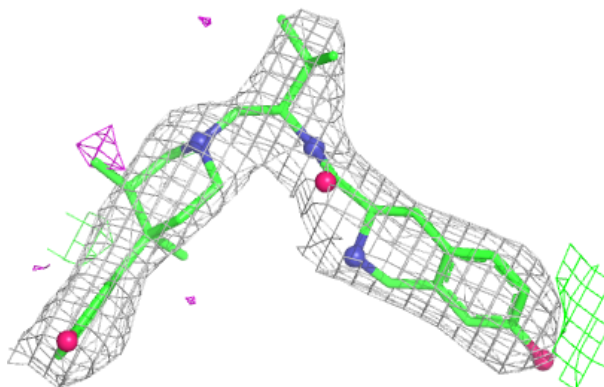
The following is a graphical depiction of the model fit to experimental electron density of all instances of the Ligand of Interest. In addition, ligands with molecular weight > 250 and outliers as shown on the geometry validation Tables will also be included. Each fit is shown from different orientation to approximate a three-dimensional view.

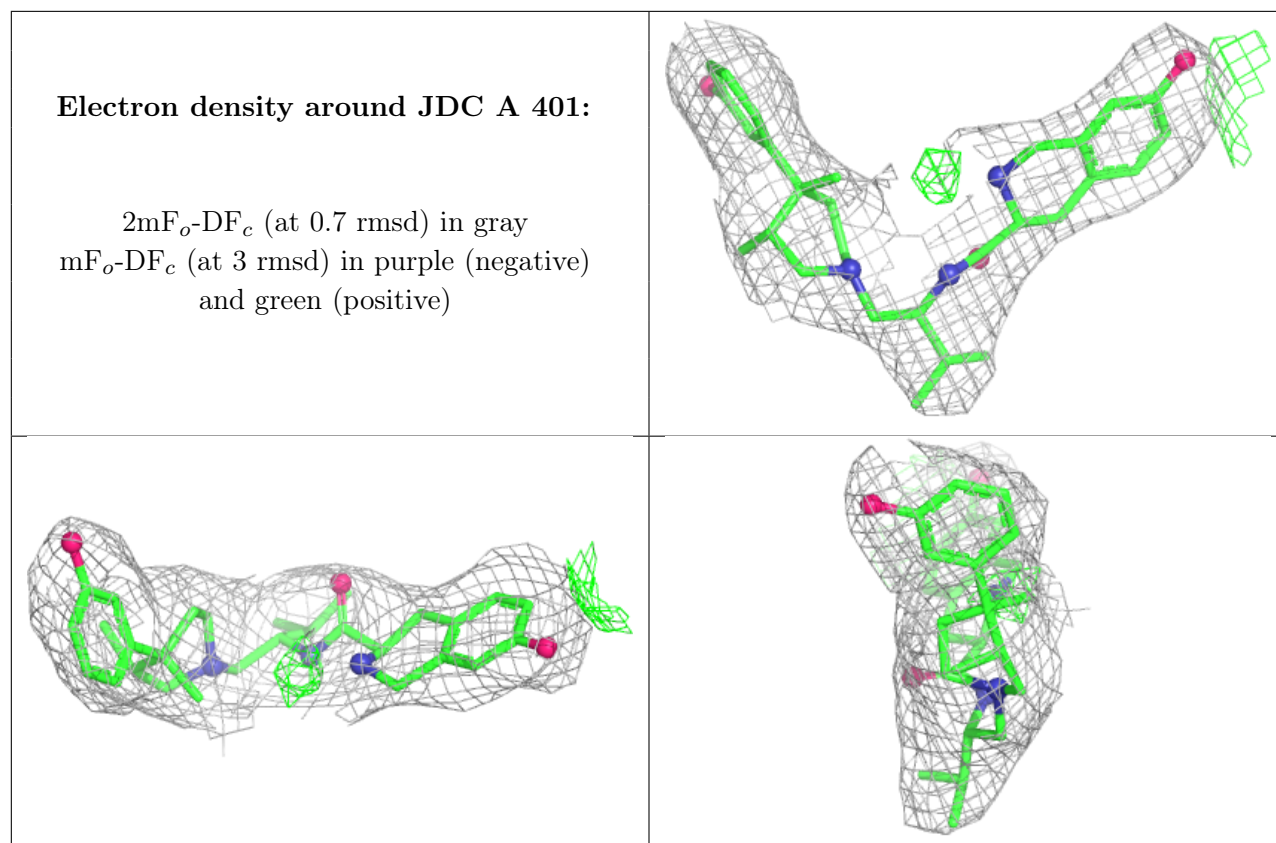
**Electron density around CLR B 402:**

$2mF_o-DF_c$  (at 0.7 rmsd) in gray  
 $mF_o-DF_c$  (at 3 rmsd) in purple (negative)  
and green (positive)

**Electron density around JDC B 401:**

$2mF_o-DF_c$  (at 0.7 rmsd) in gray  
 $mF_o-DF_c$  (at 3 rmsd) in purple (negative)  
and green (positive)





## 6.5 Other polymers [i](#)

There are no such residues in this entry.