



Full wwPDB X-ray Structure Validation Report ⓘ

Mar 8, 2026 – 02:11 AM UTC

PDB ID : 6VHX / pdb_00006vhx
Title : Klebsiella oxytoca NpsA N-terminal subdomain in complex with 3-hydroxyanthranilyl-AMSN
Authors : Kreitler, D.F.; Gulick, A.M.
Deposited on : 2020-01-10
Resolution : 1.70 Å(reported)

This is a Full wwPDB X-ray Structure Validation Report for a publicly released PDB entry.

We welcome your comments at validation@mail.wwpdb.org

A user guide is available at

<https://www.wwpdb.org/validation/2017/XrayValidationReportHelp>

with specific help available everywhere you see the ⓘ symbol.

The types of validation reports are described at

<http://www.wwpdb.org/validation/2017/FAQs#types>.

The following versions of software and data (see [references ⓘ](#)) were used in the production of this report:

MolProbity : 4-5-2 with Phenix2.0
Mogul : 2022.3.0, CSD as543be (2022)
Xtrriage (Phenix) : 2.0
EDS : 3.0
Buster-report : wwPDB partial adaption of 1.1.7 (2018)
Percentile statistics : 20250101.v01 (using entries in the PDB archive January 1st 2025)
CCP4 : 9.0.010 (Gargrove)
Density-Fitness : 1.0.12
Ideal geometry (proteins) : Engh & Huber (2001)
Ideal geometry (DNA, RNA) : Parkinson et al. (1996)
Validation Pipeline (wwPDB-VP) : 2.49

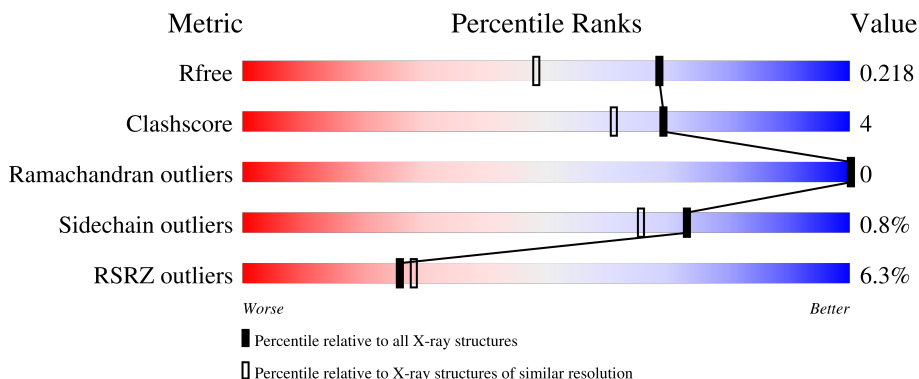
1 Overall quality at a glance

The following experimental techniques were used to determine the structure:

X-RAY DIFFRACTION

The reported resolution of this entry is 1.70 Å.

Percentile scores (ranging between 0-100) for global validation metrics of the entry are shown in the following graphic. The table shows the number of entries on which the scores are based.



Metric	Whole archive (#Entries)	Similar resolution (#Entries, resolution range(Å))
R_{free}	180053	5551 (1.70-1.70)
Clashscore	190562	5924 (1.70-1.70)
Ramachandran outliers	187476	5846 (1.70-1.70)
Sidechain outliers	187428	5846 (1.70-1.70)
RSRZ outliers	180081	5554 (1.70-1.70)

The table below summarises the geometric issues observed across the polymeric chains and their fit to the electron density. The red, orange, yellow and green segments of the lower bar indicate the fraction of residues that contain outliers for ≥ 3 , 2, 1 and 0 types of geometric quality criteria respectively. A grey segment represents the fraction of residues that are not modelled. The numeric value for each fraction is indicated below the corresponding segment, with a dot representing fractions $\leq 5\%$. The upper red bar (where present) indicates the fraction of residues that have poor fit to the electron density. The numeric value is given above the bar.

Mol	Chain	Length	Quality of chain
1	A	406	
1	B	406	

2 Entry composition

There are 7 unique types of molecules in this entry. The entry contains 6297 atoms, of which 0 are hydrogens and 0 are deuteriums.

In the tables below, the ZeroOcc column contains the number of atoms modelled with zero occupancy, the AltConf column contains the number of residues with at least one atom in alternate conformation and the Trace column contains the number of residues modelled with at most 2 atoms.

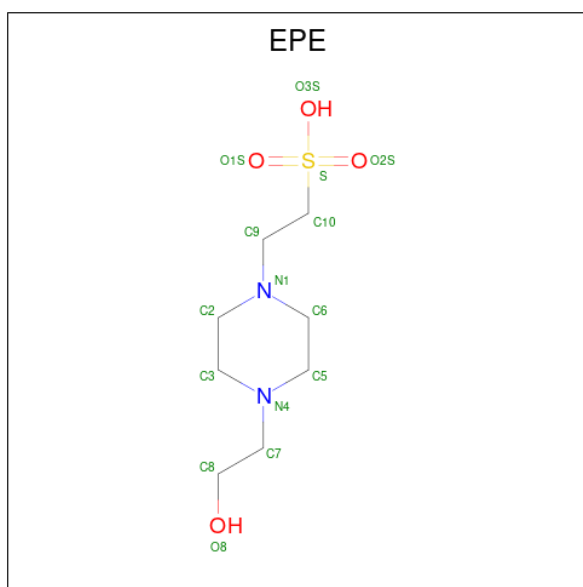
- Molecule 1 is a protein called NpsA Adenylation Domain.

Mol	Chain	Residues	Atoms					ZeroOcc	AltConf	Trace
			Total	C	N	O	S			
1	A	389	2987	1909	501	559	18	0	2	0
1	B	389	2928	1870	487	553	18	0	1	0

There are 12 discrepancies between the modelled and reference sequences:

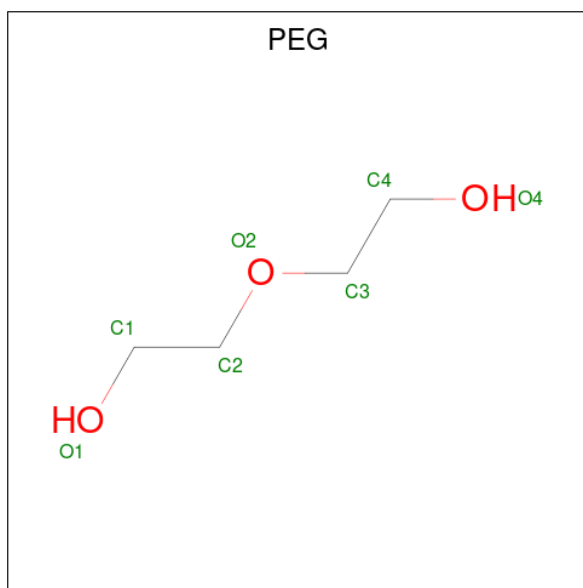
Chain	Residue	Modelled	Actual	Comment	Reference
A	-1	GLY	-	expression tag	UNP A0A2U4DY99
A	0	HIS	-	expression tag	UNP A0A2U4DY99
A	258	SER	LEU	variant	UNP A0A2U4DY99
A	312	ALA	GLU	engineered mutation	UNP A0A2U4DY99
A	313	ALA	GLU	engineered mutation	UNP A0A2U4DY99
A	314	ALA	GLN	engineered mutation	UNP A0A2U4DY99
B	-1	GLY	-	expression tag	UNP A0A2U4DY99
B	0	HIS	-	expression tag	UNP A0A2U4DY99
B	258	SER	LEU	variant	UNP A0A2U4DY99
B	312	ALA	GLU	engineered mutation	UNP A0A2U4DY99
B	313	ALA	GLU	engineered mutation	UNP A0A2U4DY99
B	314	ALA	GLN	engineered mutation	UNP A0A2U4DY99

- Molecule 2 is 5'-{[(2-amino-3-hydroxybenzene-1-carbonyl)sulfamoyl]amino}-5'-deoxyadenosine (CCD ID: QXG) (formula: C₁₇H₂₀N₈O₇S) (labeled as "Ligand of Interest" by depositor).



Mol	Chain	Residues	Atoms					ZeroOcc	AltConf
			Total	C	N	O	S		
5	B	1	15	8	2	4	1	0	0

- Molecule 6 is DI(HYDROXYETHYL)ETHER (CCD ID: PEG) (formula: $C_4H_{10}O_3$).



Mol	Chain	Residues	Atoms			ZeroOcc	AltConf
			Total	C	O		
6	B	1	7	4	3	0	0

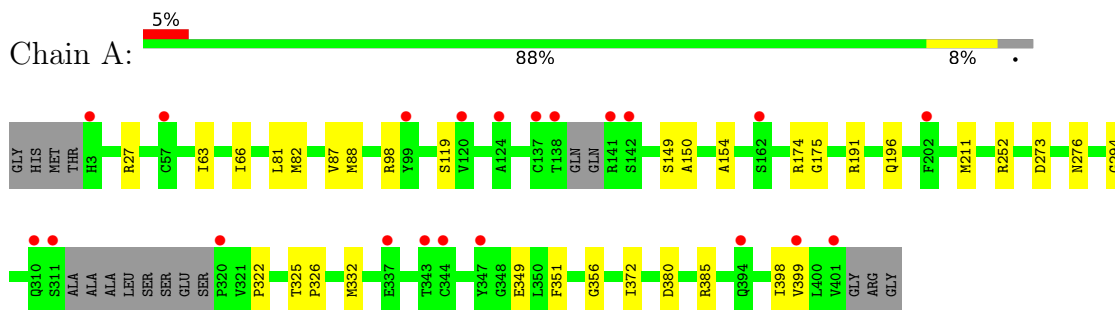
- Molecule 7 is water.

Mol	Chain	Residues	Atoms		ZeroOcc	AltConf
7	A	146	Total 146	O 146	0	0
7	B	141	Total 141	O 141	0	0

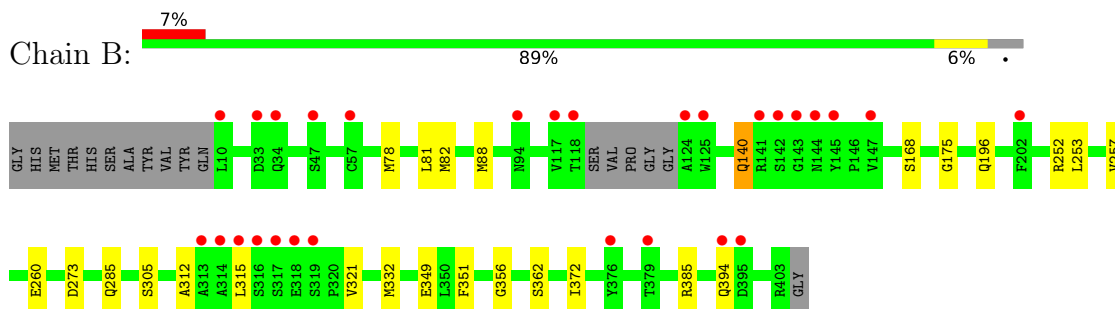
3 Residue-property plots [i](#)

These plots are drawn for all protein, RNA, DNA and oligosaccharide chains in the entry. The first graphic for a chain summarises the proportions of the various outlier classes displayed in the second graphic. The second graphic shows the sequence view annotated by issues in geometry and electron density. Residues are color-coded according to the number of geometric quality criteria for which they contain at least one outlier: green = 0, yellow = 1, orange = 2 and red = 3 or more. A red dot above a residue indicates a poor fit to the electron density ($RSRZ > 2$). Stretches of 2 or more consecutive residues without any outlier are shown as a green connector. Residues present in the sample, but not in the model, are shown in grey.

- Molecule 1: NpsA Adenylation Domain



- Molecule 1: NpsA Adenylation Domain



4 Data and refinement statistics i

Property	Value	Source
Space group	P 1 21 1	Depositor
Cell constants a, b, c, α , β , γ	77.07Å 60.23Å 79.96Å 90.00° 101.55° 90.00°	Depositor
Resolution (Å)	60.79 – 1.70 60.79 – 1.70	Depositor EDS
% Data completeness (in resolution range)	92.8 (60.79-1.70) 85.2 (60.79-1.70)	Depositor EDS
R_{merge}	(Not available)	Depositor
R_{sym}	0.09	Depositor
$\langle I/\sigma(I) \rangle$ ¹	0.62 (at 1.70Å)	Xtrriage
Refinement program	PHENIX 1.15_3459	Depositor
R, R_{free}	0.191 , 0.217 0.193 , 0.218	Depositor DCC
R_{free} test set	3492 reflections (4.42%)	wwPDB-VP
Wilson B-factor (Å ²)	21.7	Xtrriage
Anisotropy	0.312	Xtrriage
Bulk solvent k_{sol} (e/Å ³), B_{sol} (Å ²)	0.37 , 46.1	EDS
L-test for twinning ²	$\langle L \rangle = 0.48$, $\langle L^2 \rangle = 0.31$	Xtrriage
Estimated twinning fraction	0.017 for l,-k,h	Xtrriage
F_o, F_c correlation	0.96	EDS
Total number of atoms	6297	wwPDB-VP
Average B, all atoms (Å ²)	34.0	wwPDB-VP

Xtrriage's analysis on translational NCS is as follows: *The largest off-origin peak in the Patterson function is 6.47% of the height of the origin peak. No significant pseudotranslation is detected.*

¹Intensities estimated from amplitudes.

²Theoretical values of $\langle |L| \rangle$, $\langle L^2 \rangle$ for acentric reflections are 0.5, 0.333 respectively for untwinned datasets, and 0.375, 0.2 for perfectly twinned datasets.

5 Model quality

5.1 Standard geometry

Bond lengths and bond angles in the following residue types are not validated in this section: PEG, QXG, EPE, CL, BR

The Z score for a bond length (or angle) is the number of standard deviations the observed value is removed from the expected value. A bond length (or angle) with $|Z| > 5$ is considered an outlier worth inspection. RMSZ is the root-mean-square of all Z scores of the bond lengths (or angles).

Mol	Chain	Bond lengths		Bond angles	
		RMSZ	# Z >5	RMSZ	# Z >5
1	A	0.31	0/3046	0.53	0/4146
1	B	0.34	0/2983	0.56	0/4067
All	All	0.33	0/6029	0.54	0/8213

There are no bond length outliers.

There are no bond angle outliers.

There are no chirality outliers.

There are no planarity outliers.

5.2 Too-close contacts

In the following table, the Non-H and H(model) columns list the number of non-hydrogen atoms and hydrogen atoms in the chain respectively. The H(added) column lists the number of hydrogen atoms added and optimized by MolProbity. The Clashes column lists the number of clashes within the asymmetric unit, whereas Symm-Clashes lists symmetry-related clashes.

Mol	Chain	Non-H	H(model)	H(added)	Clashes	Symm-Clashes
1	A	2987	0	3004	24	0
1	B	2928	0	2915	21	0
2	A	33	0	0	1	0
2	B	33	0	0	0	0
3	A	2	0	0	1	0
4	A	4	0	0	1	0
4	B	1	0	0	0	0
5	B	15	0	18	1	0
6	B	7	0	10	0	0
7	A	146	0	0	1	0
7	B	141	0	0	0	0
All	All	6297	0	5947	42	0

The all-atom clashscore is defined as the number of clashes found per 1000 atoms (including hydrogen atoms). The all-atom clashscore for this structure is 4.

All (42) close contacts within the same asymmetric unit are listed below, sorted by their clash magnitude.

Atom-1	Atom-2	Interatomic distance (Å)	Clash overlap (Å)
1:B:82:MET:HG3	1:B:88:MET:HE3	1.70	0.71
3:A:502[A]:BR:BR	1:B:252:ARG:NH1	2.83	0.67
1:A:98:ARG:HB2	4:A:505:CL:CL	2.32	0.66
1:B:140:GLN:O	1:B:140:GLN:HG3	1.97	0.64
1:A:66:ILE:HD11	1:A:81:LEU:HD12	1.81	0.62
1:A:82:MET:HE3	1:A:88:MET:HG3	1.83	0.60
1:A:252:ARG:HH22	1:B:273:ASP:HB3	1.69	0.57
1:A:276:ASN:ND2	1:B:273:ASP:OD2	2.39	0.56
1:B:78:MET:O	1:B:88:MET:HE1	2.06	0.56
1:B:285:GLN:HG3	1:B:312:ALA:HB2	1.88	0.55
1:B:168:SER:HG	1:B:362:SER:HG	1.54	0.53
1:B:349:GLU:OE2	1:B:385:ARG:HG2	2.08	0.53
1:A:351:PHE:CE2	1:A:385:ARG:HG2	2.44	0.52
1:A:252:ARG:NH2	1:B:273:ASP:HB3	2.26	0.51
1:A:82:MET:HA	1:A:82:MET:HE2	1.93	0.51
1:A:273:ASP:HB3	1:B:252:ARG:NH2	2.26	0.51
1:A:150:ALA:HB1	1:A:174:ARG:HB3	1.93	0.49
1:A:372:ILE:HD12	1:A:385:ARG:HD2	1.94	0.48
1:B:315:LEU:HD22	1:B:321:VAL:HG22	1.94	0.48
1:B:305:SER:HB3	1:B:332:MET:SD	2.54	0.48
1:A:119:SER:O	7:A:601:HOH:O	2.21	0.46
1:A:349:GLU:OE1	1:A:385:ARG:NH2	2.47	0.45
1:A:66:ILE:HD11	1:A:81:LEU:CD1	2.45	0.44
1:A:82:MET:HE1	1:A:154:ALA:O	2.17	0.44
1:A:294:GLY:O	2:A:501:QXG:N01	2.51	0.43
5:B:501:EPE:H31	5:B:501:EPE:H82	1.75	0.43
1:A:322:PRO:HB3	1:A:399:VAL:HG22	2.00	0.43
1:B:88:MET:HB3	1:B:88:MET:HE2	1.78	0.43
1:B:351:PHE:HE1	1:B:372:ILE:HD11	1.84	0.43
1:B:82:MET:HG3	1:B:88:MET:CE	2.46	0.43
1:B:394:GLN:H	1:B:394:GLN:CD	2.27	0.43
1:B:175:GLY:HA2	1:B:356:GLY:HA2	2.01	0.42
1:A:63:ILE:HD13	1:A:87:VAL:HB	2.00	0.42
1:B:260:GLU:H	1:B:260:GLU:CD	2.28	0.42
1:A:211:MET:HE2	1:A:211:MET:HB3	1.96	0.42
1:B:81:LEU:HD23	1:B:81:LEU:HA	1.95	0.42
1:A:325:THR:HA	1:A:326:PRO:HD3	1.90	0.41

Continued on next page...

Continued from previous page...

Atom-1	Atom-2	Interatomic distance (Å)	Clash overlap (Å)
1:A:332:MET:HB3	1:A:398:ILE:CD1	2.51	0.41
1:B:253:LEU:O	1:B:257:VAL:HG22	2.21	0.41
1:A:175:GLY:HA2	1:A:356:GLY:HA2	2.02	0.41
1:A:27:ARG:NH2	1:A:191:ARG:HD3	2.36	0.40
1:A:82:MET:HE3	1:A:88:MET:HE2	2.04	0.40

There are no symmetry-related clashes.

5.3 Torsion angles [i](#)

5.3.1 Protein backbone [i](#)

In the following table, the Percentiles column shows the percent Ramachandran outliers of the chain as a percentile score with respect to all X-ray entries followed by that with respect to entries of similar resolution.

The Analysed column shows the number of residues for which the backbone conformation was analysed, and the total number of residues.

Mol	Chain	Analysed	Favoured	Allowed	Outliers	Percentiles	
1	A	385/406 (95%)	376 (98%)	9 (2%)	0	100	100
1	B	386/406 (95%)	374 (97%)	12 (3%)	0	100	100
All	All	771/812 (95%)	750 (97%)	21 (3%)	0	100	100

There are no Ramachandran outliers to report.

5.3.2 Protein sidechains [i](#)

In the following table, the Percentiles column shows the percent sidechain outliers of the chain as a percentile score with respect to all X-ray entries followed by that with respect to entries of similar resolution.

The Analysed column shows the number of residues for which the sidechain conformation was analysed, and the total number of residues.

Mol	Chain	Analysed	Rotameric	Outliers	Percentiles	
1	A	326/336 (97%)	323 (99%)	3 (1%)	70	62
1	B	313/336 (93%)	311 (99%)	2 (1%)	78	72
All	All	639/672 (95%)	634 (99%)	5 (1%)	73	65

All (5) residues with a non-rotameric sidechain are listed below:

Mol	Chain	Res	Type
1	A	149	SER
1	A	196	GLN
1	A	380	ASP
1	B	140	GLN
1	B	196	GLN

Sometimes sidechains can be flipped to improve hydrogen bonding and reduce clashes. All (5) such sidechains are listed below:

Mol	Chain	Res	Type
1	A	45	GLN
1	A	94	ASN
1	A	397	ASN
1	B	135	GLN
1	B	300	ASN

5.3.3 RNA [i](#)

There are no RNA molecules in this entry.

5.4 Non-standard residues in protein, DNA, RNA chains [i](#)

There are no non-standard protein/DNA/RNA residues in this entry.

5.5 Carbohydrates [i](#)

There are no oligosaccharides in this entry.

5.6 Ligand geometry [i](#)

Of 11 ligands modelled in this entry, 7 are monoatomic - leaving 4 for Mogul analysis.

In the following table, the Counts columns list the number of bonds (or angles) for which Mogul statistics could be retrieved, the number of bonds (or angles) that are observed in the model and the number of bonds (or angles) that are defined in the Chemical Component Dictionary. The Link column lists molecule types, if any, to which the group is linked. The Z score for a bond length (or angle) is the number of standard deviations the observed value is removed from the expected value. A bond length (or angle) with $|Z| > 2$ is considered an outlier worth inspection. RMSZ is the root-mean-square of all Z scores of the bond lengths (or angles).

Mol	Type	Chain	Res	Link	Bond lengths			Bond angles		
					Counts	RMSZ	# Z > 2	Counts	RMSZ	# Z > 2
2	QXG	A	501	-	36,36,36	1.92	13 (36%)	47,54,54	1.42	6 (12%)
5	EPE	B	501	-	15,15,15	1.25	3 (20%)	19,20,20	1.50	4 (21%)
6	PEG	B	503	-	6,6,6	0.76	0	5,5,5	0.49	0
2	QXG	B	502	-	36,36,36	1.85	14 (38%)	47,54,54	1.47	7 (14%)

In the following table, the Chirals column lists the number of chiral outliers, the number of chiral centers analysed, the number of these observed in the model and the number defined in the Chemical Component Dictionary. Similar counts are reported in the Torsion and Rings columns. '-' means no outliers of that kind were identified.

Mol	Type	Chain	Res	Link	Chirals	Torsions	Rings
2	QXG	A	501	-	-	0/19/35/35	0/4/4/4
5	EPE	B	501	-	-	3/9/19/19	0/1/1/1
6	PEG	B	503	-	-	1/4/4/4	-
2	QXG	B	502	-	-	2/19/35/35	0/4/4/4

All (30) bond length outliers are listed below:

Mol	Chain	Res	Type	Atoms	Z	Observed(Å)	Ideal(Å)
2	B	502	QXG	O12-C11	3.65	1.50	1.42
2	A	501	QXG	O12-C11	3.57	1.50	1.42
2	B	502	QXG	C02-N01	3.15	1.42	1.34
5	B	501	EPE	C10-S	3.11	1.81	1.77
2	B	502	QXG	S16-N19	-3.08	1.57	1.63
2	A	501	QXG	C04-N03	3.04	1.39	1.33
2	B	502	QXG	O21-C20	-2.99	1.16	1.23
2	A	501	QXG	C14-N15	-2.95	1.42	1.47
2	A	501	QXG	O21-C20	-2.94	1.16	1.23
2	A	501	QXG	C09-N10	2.92	1.42	1.37
2	B	502	QXG	O12-C13	-2.91	1.38	1.45
2	A	501	QXG	C20-N19	2.84	1.42	1.39
2	A	501	QXG	C07-C06	2.83	1.44	1.39
2	B	502	QXG	C07-C06	2.80	1.44	1.39
2	A	501	QXG	C02-N01	2.80	1.41	1.34
2	A	501	QXG	O12-C13	-2.65	1.39	1.45
2	B	502	QXG	C09-N10	2.46	1.41	1.37
2	A	501	QXG	C09-N08	2.44	1.36	1.31
2	B	502	QXG	C09-N08	2.43	1.36	1.31
2	A	501	QXG	S16-N15	2.43	1.64	1.61
2	B	502	QXG	C23-C22	2.36	1.43	1.39
2	B	502	QXG	C04-N03	2.35	1.38	1.33

Continued on next page...

Continued from previous page...

Mol	Chain	Res	Type	Atoms	Z	Observed(Å)	Ideal(Å)
2	A	501	QXG	C06-N05	2.24	1.38	1.34
5	B	501	EPE	O1S-S	2.22	1.51	1.45
5	B	501	EPE	O2S-S	2.22	1.51	1.45
2	B	502	QXG	C22-C20	2.18	1.54	1.50
2	B	502	QXG	S16-N15	2.14	1.63	1.61
2	B	502	QXG	C24-C25	2.08	1.42	1.38
2	A	501	QXG	C28-C26	2.07	1.46	1.40
2	B	502	QXG	C06-N05	2.02	1.38	1.34

All (17) bond angle outliers are listed below:

Mol	Chain	Res	Type	Atoms	Z	Observed(°)	Ideal(°)
2	A	501	QXG	O18-S16-O17	-5.91	111.64	120.34
2	B	502	QXG	O18-S16-O17	-4.75	113.34	120.34
5	B	501	EPE	O2S-S-O1S	-3.70	101.79	113.82
2	B	502	QXG	O21-C20-C22	3.02	126.56	121.03
5	B	501	EPE	O2S-S-C10	2.87	111.06	106.73
2	A	501	QXG	C23-C22-C28	2.69	121.72	119.47
2	B	502	QXG	O12-C11-N10	-2.57	103.15	108.09
2	A	501	QXG	O21-C20-C22	2.50	125.61	121.03
5	B	501	EPE	O1S-S-C10	2.48	110.47	106.73
2	B	502	QXG	N10-C09-N08	-2.43	110.49	113.94
2	B	502	QXG	C25-C24-C23	-2.42	117.14	120.24
2	A	501	QXG	O12-C11-N10	-2.40	103.48	108.09
2	A	501	QXG	N10-C09-N08	-2.37	110.57	113.94
2	B	502	QXG	C23-C22-C28	2.36	121.44	119.47
2	B	502	QXG	C06-N10-C09	2.23	108.08	105.74
2	A	501	QXG	C07-N08-C09	2.13	106.80	103.45
5	B	501	EPE	O3S-S-C10	2.01	109.93	106.00

There are no chirality outliers.

All (6) torsion outliers are listed below:

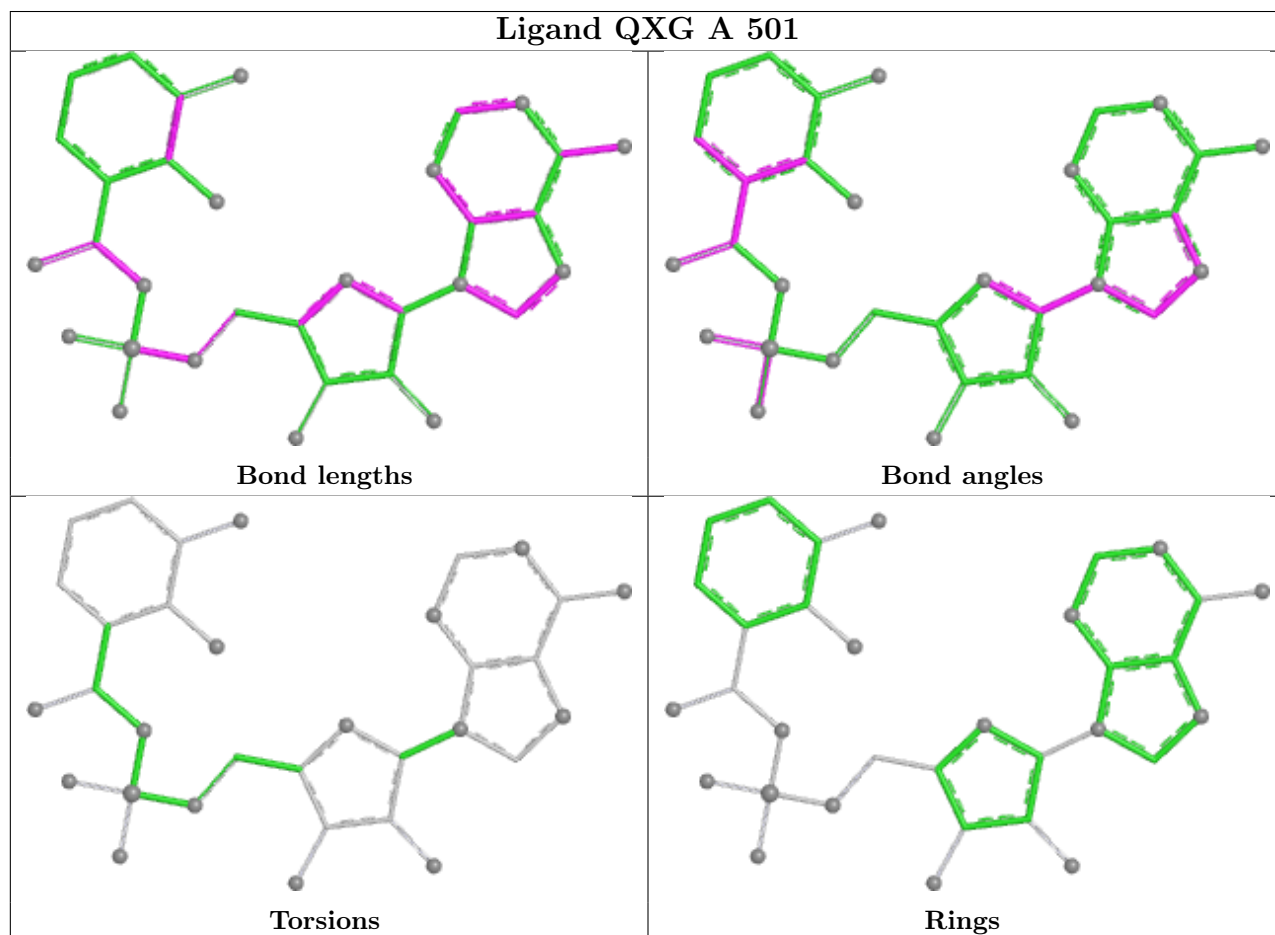
Mol	Chain	Res	Type	Atoms
5	B	501	EPE	C8-C7-N4-C3
6	B	503	PEG	O2-C3-C4-O4
2	B	502	QXG	N19-C20-C22-C23
5	B	501	EPE	C8-C7-N4-C5
5	B	501	EPE	N4-C7-C8-O8
2	B	502	QXG	O12-C13-C14-N15

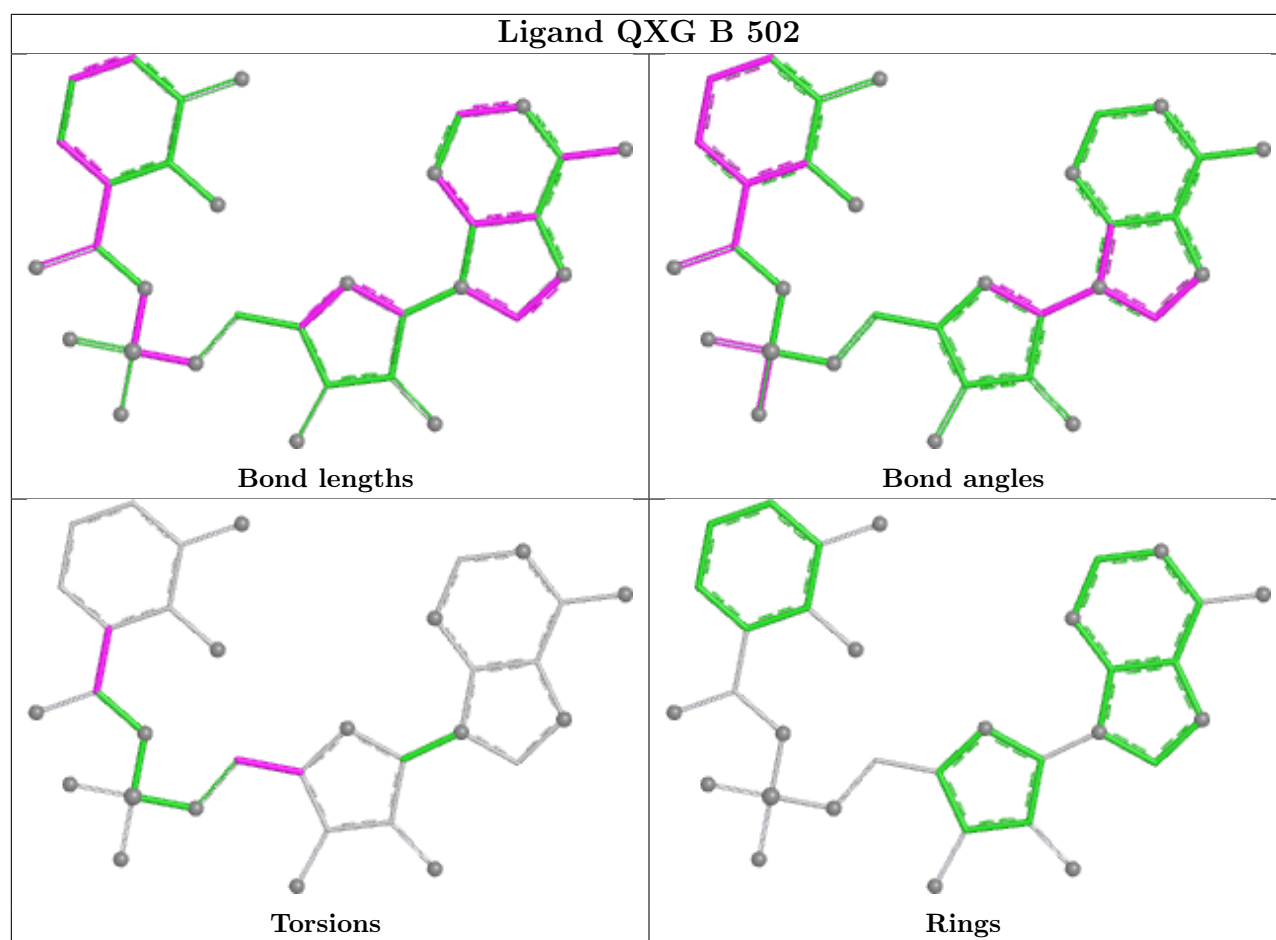
There are no ring outliers.

2 monomers are involved in 2 short contacts:

Mol	Chain	Res	Type	Clashes	Symm-Clashes
2	A	501	QXG	1	0
5	B	501	EPE	1	0

The following is a two-dimensional graphical depiction of Mogul quality analysis of bond lengths, bond angles, torsion angles, and ring geometry for all instances of the Ligand of Interest. In addition, ligands with molecular weight > 250 and outliers as shown on the validation Tables will also be included. For torsion angles, if less than 5% of the Mogul distribution of torsion angles is within 10 degrees of the torsion angle in question, then that torsion angle is considered an outlier. Any bond that is central to one or more torsion angles identified as an outlier by Mogul will be highlighted in the graph. For rings, the root-mean-square deviation (RMSD) between the ring in question and similar rings identified by Mogul is calculated over all ring torsion angles. If the average RMSD is greater than 60 degrees and the minimal RMSD between the ring in question and any Mogul-identified rings is also greater than 60 degrees, then that ring is considered an outlier. The outliers are highlighted in purple. The color gray indicates Mogul did not find sufficient equivalents in the CSD to analyse the geometry.





5.7 Other polymers [i](#)

There are no such residues in this entry.

5.8 Polymer linkage issues [i](#)

There are no chain breaks in this entry.

6 Fit of model and data

6.1 Protein, DNA and RNA chains

In the following table, the column labelled ‘#RSRZ > 2’ contains the number (and percentage) of RSRZ outliers, followed by percent RSRZ outliers for the chain as percentile scores relative to all X-ray entries and entries of similar resolution. The OWAB column contains the minimum, median, 95th percentile and maximum values of the occupancy-weighted average B-factor per residue. The column labelled ‘Q < 0.9’ lists the number of (and percentage) of residues with an average occupancy less than 0.9.

Mol	Chain	Analysed	<RSRZ>	#RSRZ>2	OWAB(Å ²)	Q<0.9
1	A	389/406 (95%)	0.41	21 (5%) 31 34	17, 30, 58, 86	2 (0%)
1	B	389/406 (95%)	0.49	28 (7%) 21 23	15, 31, 58, 90	1 (0%)
All	All	778/812 (95%)	0.45	49 (6%) 26 28	15, 30, 58, 90	3 (0%)

All (49) RSRZ outliers are listed below:

Mol	Chain	Res	Type	RSRZ
1	B	118	THR	5.6
1	A	99[A]	TYR	4.7
1	B	395	ASP	4.5
1	A	347	TYR	4.4
1	A	320	PRO	4.1
1	B	117	VAL	4.0
1	B	142	SER	3.7
1	B	316	SER	3.3
1	A	401	VAL	3.3
1	A	311	SER	3.2
1	B	202	PHE	3.2
1	B	124	ALA	3.1
1	A	138	THR	3.1
1	A	202	PHE	2.9
1	B	34	GLN	2.9
1	A	142	SER	2.8
1	A	57	CYS	2.8
1	B	376	TYR	2.7
1	A	343	THR	2.6
1	B	57	CYS	2.6
1	A	3	HIS	2.6
1	B	379	THR	2.6
1	A	310	GLN	2.6
1	B	147	VAL	2.6

Continued on next page...

Continued from previous page...

Mol	Chain	Res	Type	RSRZ
1	A	141	ARG	2.5
1	B	33	ASP	2.5
1	B	318	GLU	2.5
1	A	394	GLN	2.4
1	A	399	VAL	2.4
1	B	317	SER	2.3
1	B	141	ARG	2.3
1	B	313	ALA	2.3
1	B	394	GLN	2.3
1	B	145	TYR	2.3
1	B	144	ASN	2.3
1	B	143	GLY	2.3
1	A	344	CYS	2.2
1	B	94	ASN	2.2
1	B	315	LEU	2.2
1	B	47	SER	2.2
1	A	162	SER	2.2
1	A	137	CYS	2.1
1	B	125	TRP	2.1
1	A	120	VAL	2.1
1	A	337	GLU	2.1
1	B	314	ALA	2.1
1	B	319	SER	2.1
1	B	10	LEU	2.1
1	A	124	ALA	2.0

6.2 Non-standard residues in protein, DNA, RNA chains [i](#)

There are no non-standard protein/DNA/RNA residues in this entry.

6.3 Carbohydrates [i](#)

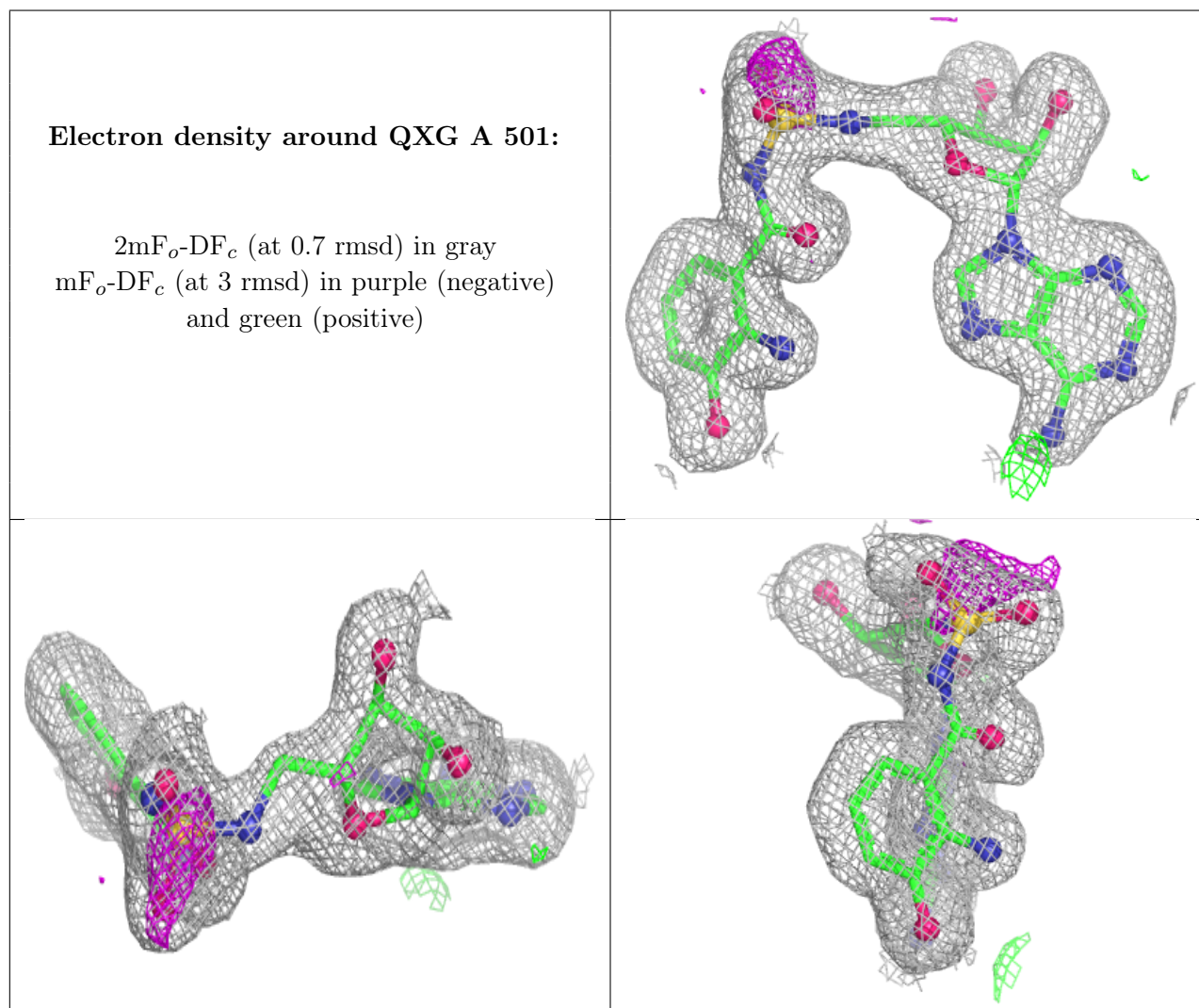
There are no oligosaccharides in this entry.

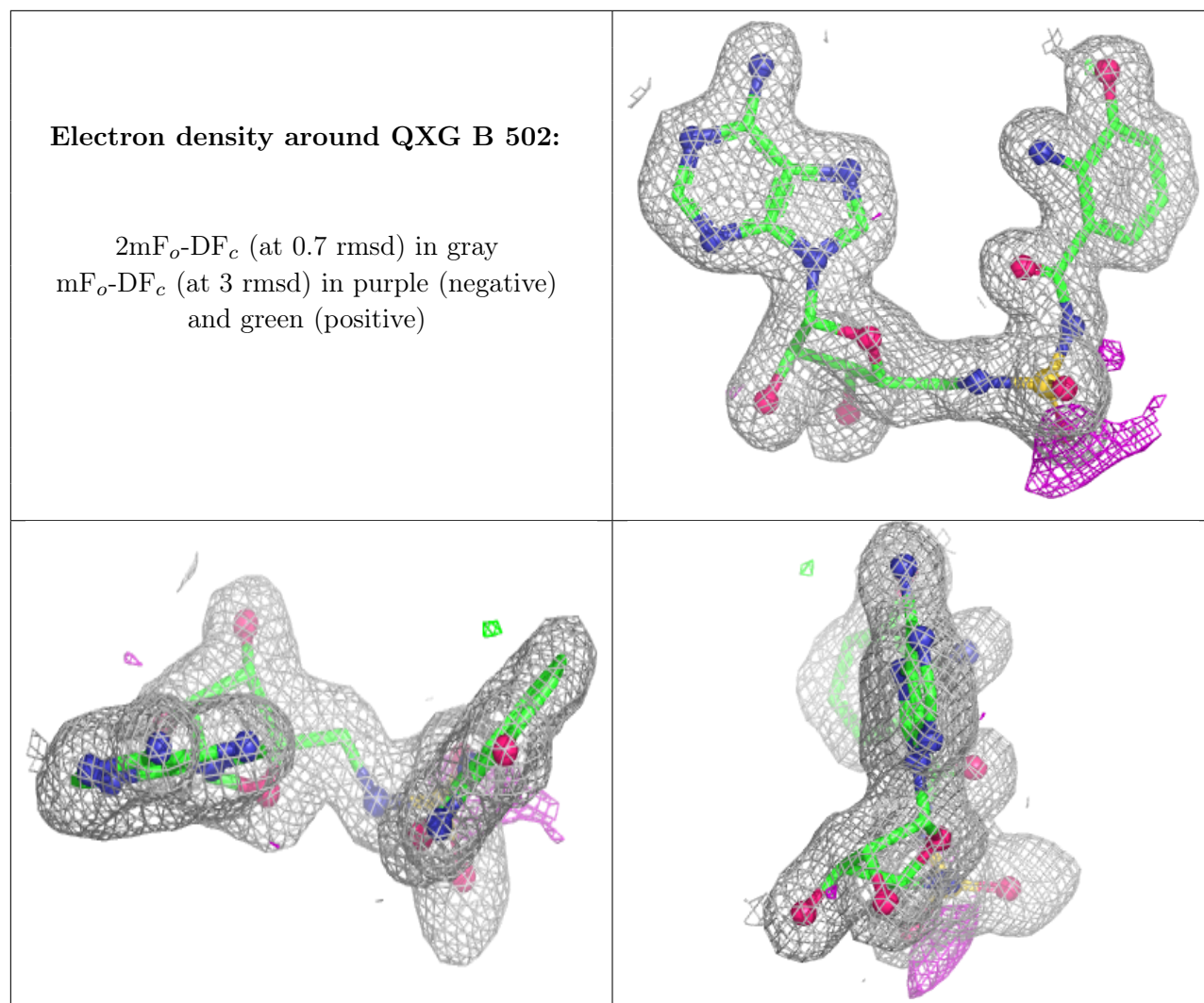
6.4 Ligands [i](#)

In the following table, the Atoms column lists the number of modelled atoms in the group and the number defined in the chemical component dictionary. The B-factors column lists the minimum, median, 95th percentile and maximum values of B factors of atoms in the group. The column labelled 'Q < 0.9' lists the number of atoms with occupancy less than 0.9.

Mol	Type	Chain	Res	Atoms	RSCC	RSR	B-factors(\AA^2)	Q<0.9
6	PEG	B	503	7/7	0.85	0.13	48,49,51,51	0
5	EPE	B	501	15/15	0.93	0.10	31,36,49,51	0
2	QXG	A	501	33/33	0.95	0.07	19,25,28,30	0
4	CL	A	506	1/1	0.95	0.11	25,25,25,25	0
3	BR	A	502[B]	1/1	0.96	0.06	46,46,46,46	1
3	BR	A	502[A]	1/1	0.96	0.06	42,42,42,42	1
4	CL	B	504	1/1	0.97	0.09	31,31,31,31	0
4	CL	A	504	1/1	0.97	0.10	30,30,30,30	0
2	QXG	B	502	33/33	0.97	0.05	20,23,26,26	0
4	CL	A	503	1/1	0.99	0.07	32,32,32,32	0
4	CL	A	505	1/1	0.99	0.04	30,30,30,30	0

The following is a graphical depiction of the model fit to experimental electron density of all instances of the Ligand of Interest. In addition, ligands with molecular weight > 250 and outliers as shown on the geometry validation Tables will also be included. Each fit is shown from different orientation to approximate a three-dimensional view.





6.5 Other polymers [i](#)

There are no such residues in this entry.