



Full wwPDB X-ray Structure Validation Report ⓘ

Mar 5, 2026 – 01:30 AM UTC

PDB ID : 6VGF / pdb_00006vgf
Title : Peanut lectin complexed with divalent S-beta-D-thiogalactopyranosyl beta-D-glucopyranoside derivative (diSTGD)
Authors : Otero, L.H.; Primo, E.D.; Cagnoni, A.J.; Cano, M.E.; Klinke, S.; Goldbaum, F.A.; Uhrig, M.L.
Deposited on : 2020-01-08
Resolution : 1.83 Å(reported)

This is a Full wwPDB X-ray Structure Validation Report for a publicly released PDB entry.

We welcome your comments at validation@mail.wwpdb.org

A user guide is available at

<https://www.wwpdb.org/validation/2017/XrayValidationReportHelp>

with specific help available everywhere you see the ⓘ symbol.

The types of validation reports are described at

<http://www.wwpdb.org/validation/2017/FAQs#types>.

The following versions of software and data (see [references ⓘ](#)) were used in the production of this report:

MolProbity : 4-5-2 with Phenix2.0
Mogul : 2022.3.0, CSD as543be (2022)
Xtrriage (Phenix) : 2.0
EDS : 3.0
Buster-report : wwPDB partial adaption of 1.1.7 (2018)
Percentile statistics : 20250101.v01 (using entries in the PDB archive January 1st 2025)
CCP4 : 9.0.010 (Gargrove)
Density-Fitness : 1.0.12
Ideal geometry (proteins) : Engh & Huber (2001)
Ideal geometry (DNA, RNA) : Parkinson et al. (1996)
Validation Pipeline (wwPDB-VP) : 2.49

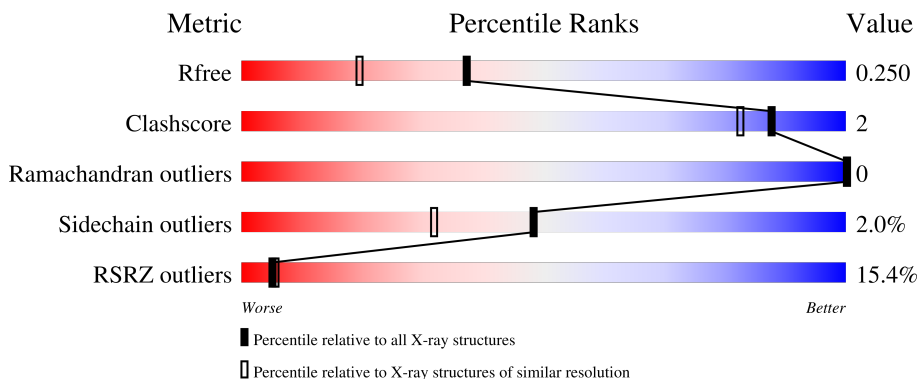
1 Overall quality at a glance

The following experimental techniques were used to determine the structure:

X-RAY DIFFRACTION

The reported resolution of this entry is 1.83 Å.

Percentile scores (ranging between 0-100) for global validation metrics of the entry are shown in the following graphic. The table shows the number of entries on which the scores are based.



Metric	Whole archive (#Entries)	Similar resolution (#Entries, resolution range(Å))
R_{free}	180053	1296 (1.84-1.84)
Clashscore	190562	1329 (1.84-1.84)
Ramachandran outliers	187476	1318 (1.84-1.84)
Sidechain outliers	187428	1318 (1.84-1.84)
RSRZ outliers	180081	1296 (1.84-1.84)

The table below summarises the geometric issues observed across the polymeric chains and their fit to the electron density. The red, orange, yellow and green segments of the lower bar indicate the fraction of residues that contain outliers for ≥ 3 , 2, 1 and 0 types of geometric quality criteria respectively. A grey segment represents the fraction of residues that are not modelled. The numeric value for each fraction is indicated below the corresponding segment, with a dot representing fractions $\leq 5\%$. The upper red bar (where present) indicates the fraction of residues that have poor fit to the electron density. The numeric value is given above the bar.

Mol	Chain	Length	Quality of chain
1	A	236	 5% 92% 6%
1	B	236	 3% 91% 6%
1	C	236	 36% 89% 7%
1	D	236	 17% 89% 9%

2 Entry composition i

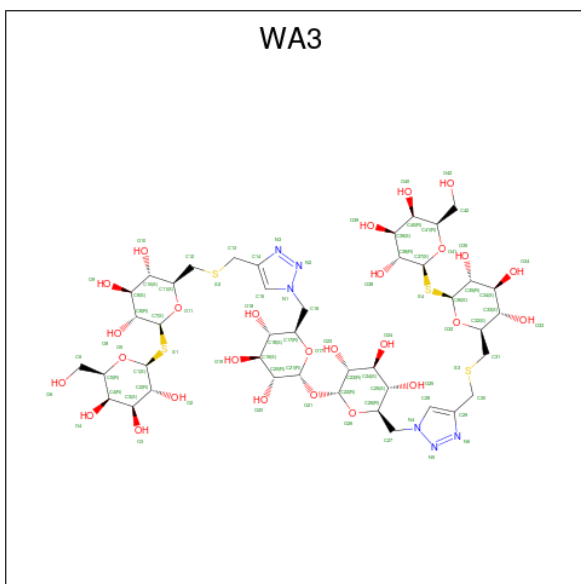
There are 5 unique types of molecules in this entry. The entry contains 8494 atoms, of which 256 are hydrogens and 0 are deuteriums.

In the tables below, the ZeroOcc column contains the number of atoms modelled with zero occupancy, the AltConf column contains the number of residues with at least one atom in alternate conformation and the Trace column contains the number of residues modelled with at most 2 atoms.

- Molecule 1 is a protein called Galactose-binding lectin.

Mol	Chain	Residues	Atoms					ZeroOcc	AltConf	Trace
			Total	C	N	O	S			
1	A	232	Total 1743	C 1102	N 287	O 352	S 2	0	0	0
1	B	232	Total 1743	C 1102	N 287	O 352	S 2	0	0	0
1	C	232	Total 1743	C 1102	N 287	O 352	S 2	0	0	0
1	D	232	Total 1743	C 1102	N 287	O 352	S 2	0	0	0

- Molecule 2 is (2S,3R,4S,5R,6S)-2-(hydroxymethyl)-6-{{[(2S,3R,4S,5S,6S)-3,4,5-trihydroxy-6-{{[(1-{{[(2R,3S,4S,5R,6R)-3,4,5-trihydroxy-6-{{[(2R,3R,4S,5S,6R)-3,4,5-trihydroxy-6-{{4-{{[[[(2S,3S,4S,5R,6S)-3,4,5-trihydroxy-6-{{[(2S,3R,4S,5R,6R)-3,4,5-trihydroxy-6-(hydroxymethyl)tetrahydro-2H-pyran-2-yl]sulfanyl}tetrahydro-2H-pyran-2-yl]methyl}sulfanyl)methyl]-1H-1,2,3-triazol-1-yl}methyl}tetrahydro-2H-pyran-2-yl]oxy}tetrahydro-2H-pyran-2-yl]methyl}-1H-1,2,3-triazol-4-yl)methyl}sulfanyl}methyl}tetrahydro-2H-pyran-2-yl]sulfanyl}tetrahydro-2H-pyran-3,4,5-triol (CCD ID: WA3) (formula: C₄₂H₆₈N₆O₂₇S₄) (labeled as "Ligand of Interest" by depositor).



Mol	Chain	Residues	Atoms					ZeroOcc	AltConf	
2	A	1	Total	C	H	N	O	S	99	0
			143	42	64	6	27	4		
2	B	1	Total	C	H	N	O	S	102	0
			143	42	64	6	27	4		
2	C	1	Total	C	H	N	O	S	99	0
			143	42	64	6	27	4		
2	D	1	Total	C	H	N	O	S	98	0
			143	42	64	6	27	4		

- Molecule 3 is MANGANESE (II) ION (CCD ID: MN) (formula: Mn).

Mol	Chain	Residues	Atoms		ZeroOcc	AltConf
3	A	1	Total	Mn	0	0
			1	1		
3	B	1	Total	Mn	0	0
			1	1		
3	C	1	Total	Mn	0	0
			1	1		
3	D	1	Total	Mn	0	0
			1	1		

- Molecule 4 is CALCIUM ION (CCD ID: CA) (formula: Ca).

Mol	Chain	Residues	Atoms		ZeroOcc	AltConf
4	A	1	Total	Ca	0	0
			1	1		
4	B	1	Total	Ca	0	0
			1	1		
4	C	1	Total	Ca	0	0
			1	1		
4	D	1	Total	Ca	0	0
			1	1		

- Molecule 5 is water.

Mol	Chain	Residues	Atoms		ZeroOcc	AltConf
5	A	249	Total	O	0	0
			249	249		
5	B	264	Total	O	0	0
			264	264		
5	C	202	Total	O	0	0
			202	202		

Continued on next page...

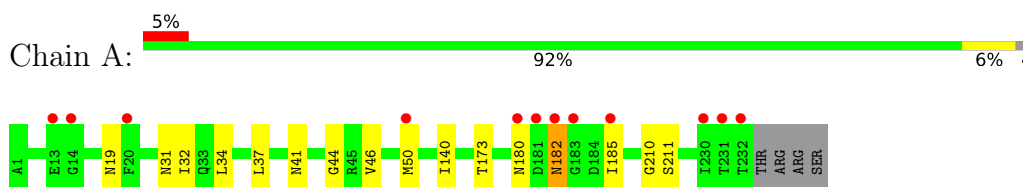
Continued from previous page...

Mol	Chain	Residues	Atoms		ZeroOcc	AltConf
5	D	227	Total 227	O 227	0	0

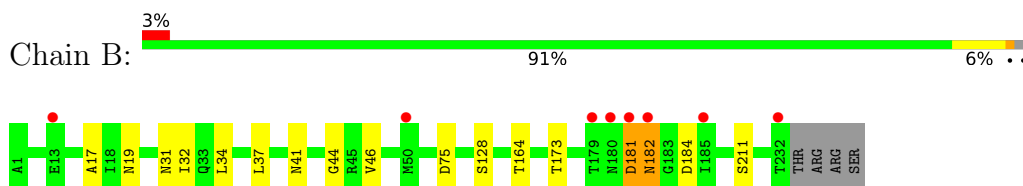
3 Residue-property plots [i](#)

These plots are drawn for all protein, RNA, DNA and oligosaccharide chains in the entry. The first graphic for a chain summarises the proportions of the various outlier classes displayed in the second graphic. The second graphic shows the sequence view annotated by issues in geometry and electron density. Residues are color-coded according to the number of geometric quality criteria for which they contain at least one outlier: green = 0, yellow = 1, orange = 2 and red = 3 or more. A red dot above a residue indicates a poor fit to the electron density ($RSRZ > 2$). Stretches of 2 or more consecutive residues without any outlier are shown as a green connector. Residues present in the sample, but not in the model, are shown in grey.

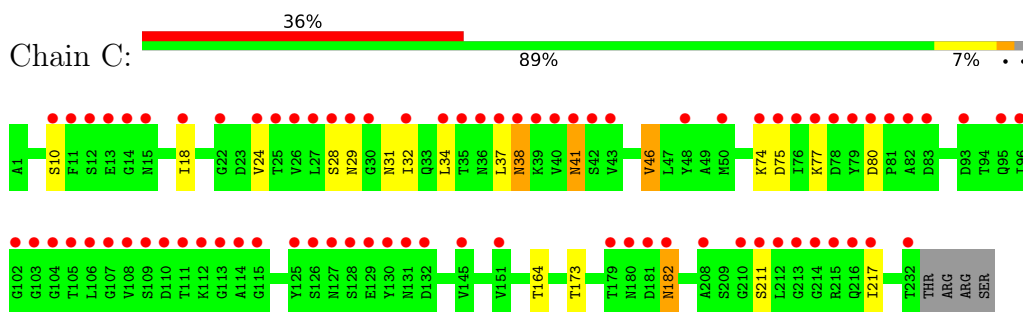
- Molecule 1: Galactose-binding lectin



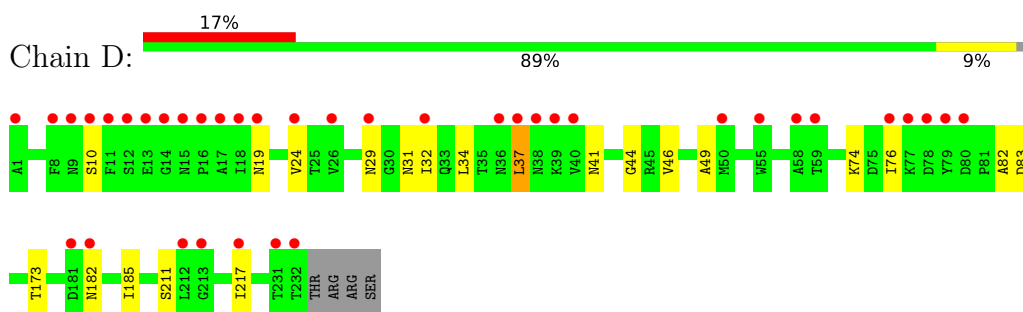
- Molecule 1: Galactose-binding lectin



- Molecule 1: Galactose-binding lectin



- Molecule 1: Galactose-binding lectin



4 Data and refinement statistics

Property	Value	Source
Space group	P 2 21 21	Depositor
Cell constants a, b, c, α , β , γ	76.06Å 125.04Å 126.96Å 90.00° 90.00° 90.00°	Depositor
Resolution (Å)	26.79 – 1.83 26.79 – 1.83	Depositor EDS
% Data completeness (in resolution range)	99.9 (26.79-1.83) 99.8 (26.79-1.83)	Depositor EDS
R_{merge}	0.06	Depositor
R_{sym}	(Not available)	Depositor
$\langle I/\sigma(I) \rangle$ ¹	2.36 (at 1.83Å)	Xtrriage
Refinement program	BUSTER 2.10.3	Depositor
R, R_{free}	0.222 , 0.243 0.223 , 0.250	Depositor DCC
R_{free} test set	5307 reflections (4.95%)	wwPDB-VP
Wilson B-factor (Å ²)	26.8	Xtrriage
Anisotropy	0.440	Xtrriage
Bulk solvent k_{sol} (e/Å ³), B_{sol} (Å ²)	0.34 , 38.1	EDS
L-test for twinning ²	$\langle L \rangle = 0.50$, $\langle L^2 \rangle = 0.33$	Xtrriage
Estimated twinning fraction	0.006 for -h,l,k	Xtrriage
F_o, F_c correlation	0.95	EDS
Total number of atoms	8494	wwPDB-VP
Average B, all atoms (Å ²)	36.0	wwPDB-VP

Xtrriage's analysis on translational NCS is as follows: *The largest off-origin peak in the Patterson function is 4.66% of the height of the origin peak. No significant pseudotranslation is detected.*

¹Intensities estimated from amplitudes.

²Theoretical values of $\langle |L| \rangle$, $\langle L^2 \rangle$ for acentric reflections are 0.5, 0.333 respectively for untwinned datasets, and 0.375, 0.2 for perfectly twinned datasets.

5 Model quality i

5.1 Standard geometry i

Bond lengths and bond angles in the following residue types are not validated in this section: CA, WA3, MN

The Z score for a bond length (or angle) is the number of standard deviations the observed value is removed from the expected value. A bond length (or angle) with $|Z| > 5$ is considered an outlier worth inspection. RMSZ is the root-mean-square of all Z scores of the bond lengths (or angles).

Mol	Chain	Bond lengths		Bond angles	
		RMSZ	# Z >5	RMSZ	# Z >5
1	A	0.83	1/1779 (0.1%)	1.15	5/2426 (0.2%)
1	B	0.90	0/1779	1.16	6/2426 (0.2%)
1	C	0.80	0/1779	1.16	5/2426 (0.2%)
1	D	0.83	0/1779	1.15	3/2426 (0.1%)
All	All	0.84	1/7116 (0.0%)	1.15	19/9704 (0.2%)

All (1) bond length outliers are listed below:

Mol	Chain	Res	Type	Atoms	Z	Observed(Å)	Ideal(Å)
1	A	140	ILE	CG1-CD1	5.24	1.72	1.51

All (19) bond angle outliers are listed below:

Mol	Chain	Res	Type	Atoms	Z	Observed(°)	Ideal(°)
1	B	19	ASN	CA-CB-CG	7.49	120.09	112.60
1	B	181	ASP	CA-CB-CG	7.48	120.08	112.60
1	C	38	ASN	CA-CB-CG	7.24	119.84	112.60
1	D	123	ASP	CA-CB-CG	7.03	119.63	112.60
1	C	31	ASN	CA-CB-CG	6.75	119.35	112.60
1	A	19	ASN	CA-CB-CG	6.41	119.01	112.60
1	D	31	ASN	CA-CB-CG	6.26	118.86	112.60
1	A	31	ASN	CA-CB-CG	6.25	118.84	112.60
1	B	31	ASN	CA-CB-CG	6.11	118.71	112.60
1	A	180	ASN	CA-C-N	5.50	127.65	120.28
1	A	180	ASN	C-N-CA	5.50	127.65	120.28
1	C	75	ASP	CA-CB-CG	5.42	118.02	112.60
1	A	182	ASN	CA-CB-CG	5.38	117.98	112.60
1	D	182	ASN	CA-CB-CG	5.35	117.95	112.60
1	B	182	ASN	CA-CB-CG	5.30	117.91	112.60
1	C	182	ASN	CA-CB-CG	5.28	117.88	112.60

Continued on next page...

Continued from previous page...

Mol	Chain	Res	Type	Atoms	Z	Observed($^{\circ}$)	Ideal($^{\circ}$)
1	B	75	ASP	CA-CB-CG	5.23	117.83	112.60
1	B	184	ASP	CA-CB-CG	5.15	117.75	112.60
1	C	41	ASN	CA-CB-CG	5.15	117.75	112.60

There are no chirality outliers.

There are no planarity outliers.

5.2 Too-close contacts

In the following table, the Non-H and H(model) columns list the number of non-hydrogen atoms and hydrogen atoms in the chain respectively. The H(added) column lists the number of hydrogen atoms added and optimized by MolProbity. The Clashes column lists the number of clashes within the asymmetric unit, whereas Symm-Clashes lists symmetry-related clashes.

Mol	Chain	Non-H	H(model)	H(added)	Clashes	Symm-Clashes
1	A	1743	0	1699	6	0
1	B	1743	0	1699	7	0
1	C	1743	0	1699	11	0
1	D	1743	0	1699	13	0
2	A	79	64	0	0	0
2	B	79	64	0	0	0
2	C	79	64	0	0	0
2	D	79	64	0	0	0
3	A	1	0	0	0	0
3	B	1	0	0	0	0
3	C	1	0	0	0	0
3	D	1	0	0	0	0
4	A	1	0	0	0	0
4	B	1	0	0	0	0
4	C	1	0	0	0	0
4	D	1	0	0	0	0
5	A	249	0	0	0	0
5	B	264	0	0	1	0
5	C	202	0	0	0	0
5	D	227	0	0	0	0
All	All	8238	256	6796	28	0

The all-atom clashscore is defined as the number of clashes found per 1000 atoms (including hydrogen atoms). The all-atom clashscore for this structure is 2.

All (28) close contacts within the same asymmetric unit are listed below, sorted by their clash magnitude.

Atom-1	Atom-2	Interatomic distance (Å)	Clash overlap (Å)
1:D:32:ILE:HD13	1:D:46:VAL:HG11	1.77	0.67
1:A:32:ILE:HD13	1:A:46:VAL:HG11	1.79	0.65
1:C:32:ILE:HD13	1:C:46:VAL:HG21	1.78	0.65
1:B:32:ILE:HD13	1:B:46:VAL:HG11	1.82	0.62
1:C:29:ASN:HA	1:D:217:ILE:HD13	1.85	0.59
1:C:217:ILE:HD13	1:D:29:ASN:HA	1.86	0.57
1:C:74:LYS:HE2	1:D:10:SER:HB3	1.89	0.54
1:B:173:THR:HG21	1:C:173:THR:HG21	1.89	0.53
1:C:18:ILE:CG2	1:C:46:VAL:HG22	2.38	0.53
1:D:37:LEU:HG	1:D:76:ILE:HD13	1.90	0.52
1:D:34:LEU:O	1:D:44:GLY:HA3	2.08	0.52
1:C:24:VAL:HG22	1:C:34:LEU:HA	1.94	0.49
1:A:173:THR:HG21	1:D:173:THR:HG21	1.94	0.49
1:A:34:LEU:O	1:A:44:GLY:HA3	2.13	0.49
1:B:128:SER:HA	5:B:467:HOH:O	2.12	0.49
1:A:41:ASN:HD22	1:A:211:SER:HA	1.79	0.48
1:A:50:MET:SD	1:B:17:ALA:HA	2.52	0.48
1:D:41:ASN:HD22	1:D:211:SER:HA	1.79	0.48
1:C:74:LYS:CE	1:D:10:SER:HB3	2.45	0.47
1:B:34:LEU:O	1:B:44:GLY:HA3	2.16	0.46
1:A:41:ASN:HA	1:A:210:GLY:O	2.15	0.45
1:D:24:VAL:HG22	1:D:34:LEU:HA	1.98	0.45
1:C:41:ASN:HD22	1:C:211:SER:HA	1.81	0.45
1:D:82:ALA:HB1	1:D:83:ASP:HA	2.00	0.43
1:D:19:ASN:ND2	1:D:49:ALA:HA	2.34	0.42
1:B:164:THR:HG21	1:C:164:THR:HG21	2.02	0.42
1:B:41:ASN:HD22	1:B:211:SER:HA	1.84	0.41
1:C:10:SER:HB3	1:D:74:LYS:CE	2.51	0.40

There are no symmetry-related clashes.

5.3 Torsion angles [i](#)

5.3.1 Protein backbone [i](#)

In the following table, the Percentiles column shows the percent Ramachandran outliers of the chain as a percentile score with respect to all X-ray entries followed by that with respect to entries of similar resolution.

The Analysed column shows the number of residues for which the backbone conformation was analysed, and the total number of residues.

Mol	Chain	Analysed	Favoured	Allowed	Outliers	Percentiles	
1	A	230/236 (98%)	225 (98%)	5 (2%)	0	100	100
1	B	230/236 (98%)	225 (98%)	5 (2%)	0	100	100
1	C	230/236 (98%)	225 (98%)	5 (2%)	0	100	100
1	D	230/236 (98%)	226 (98%)	4 (2%)	0	100	100
All	All	920/944 (98%)	901 (98%)	19 (2%)	0	100	100

There are no Ramachandran outliers to report.

5.3.2 Protein sidechains [i](#)

In the following table, the Percentiles column shows the percent sidechain outliers of the chain as a percentile score with respect to all X-ray entries followed by that with respect to entries of similar resolution.

The Analysed column shows the number of residues for which the sidechain conformation was analysed, and the total number of residues.

Mol	Chain	Analysed	Rotameric	Outliers	Percentiles	
1	A	197/201 (98%)	194 (98%)	3 (2%)	57	42
1	B	197/201 (98%)	194 (98%)	3 (2%)	57	42
1	C	197/201 (98%)	190 (96%)	7 (4%)	31	13
1	D	197/201 (98%)	194 (98%)	3 (2%)	57	42
All	All	788/804 (98%)	772 (98%)	16 (2%)	48	32

All (16) residues with a non-rotameric sidechain are listed below:

Mol	Chain	Res	Type
1	A	37	LEU
1	A	182	ASN
1	A	185	ILE
1	B	37	LEU
1	B	181	ASP
1	B	182	ASN
1	C	28	SER
1	C	37	LEU
1	C	38	ASN
1	C	46	VAL
1	C	77	LYS
1	C	80	ASP
1	C	182	ASN

Continued on next page...

Continued from previous page...

Mol	Chain	Res	Type
1	D	37	LEU
1	D	112	LYS
1	D	185	ILE

Sometimes sidechains can be flipped to improve hydrogen bonding and reduce clashes. All (20) such sidechains are listed below:

Mol	Chain	Res	Type
1	A	15	ASN
1	A	41	ASN
1	A	61	ASN
1	A	154	ASN
1	B	15	ASN
1	B	41	ASN
1	B	61	ASN
1	B	95	GLN
1	B	154	ASN
1	C	15	ASN
1	C	33	GLN
1	C	41	ASN
1	C	61	ASN
1	C	95	GLN
1	C	154	ASN
1	D	15	ASN
1	D	19	ASN
1	D	41	ASN
1	D	61	ASN
1	D	95	GLN

5.3.3 RNA [i](#)

There are no RNA molecules in this entry.

5.4 Non-standard residues in protein, DNA, RNA chains [i](#)

There are no non-standard protein/DNA/RNA residues in this entry.

5.5 Carbohydrates [i](#)

There are no oligosaccharides in this entry.

5.6 Ligand geometry [i](#)

Of 12 ligands modelled in this entry, 8 are monoatomic - leaving 4 for Mogul analysis.

In the following table, the Counts columns list the number of bonds (or angles) for which Mogul statistics could be retrieved, the number of bonds (or angles) that are observed in the model and the number of bonds (or angles) that are defined in the Chemical Component Dictionary. The Link column lists molecule types, if any, to which the group is linked. The Z score for a bond length (or angle) is the number of standard deviations the observed value is removed from the expected value. A bond length (or angle) with $|Z| > 2$ is considered an outlier worth inspection. RMSZ is the root-mean-square of all Z scores of the bond lengths (or angles).

Mol	Type	Chain	Res	Link	Bond lengths			Bond angles		
					Counts	RMSZ	# Z > 2	Counts	RMSZ	# Z > 2
2	WA3	A	301	-	86,86,86	0.64	2 (2%)	111,127,127	1.18	8 (7%)
2	WA3	C	301	-	86,86,86	0.59	2 (2%)	111,127,127	1.15	8 (7%)
2	WA3	B	301	-	86,86,86	0.63	2 (2%)	111,127,127	1.00	6 (5%)
2	WA3	D	301	-	86,86,86	0.61	2 (2%)	111,127,127	1.10	7 (6%)

In the following table, the Chirals column lists the number of chiral outliers, the number of chiral centers analysed, the number of these observed in the model and the number defined in the Chemical Component Dictionary. Similar counts are reported in the Torsion and Rings columns. '-' means no outliers of that kind were identified.

Mol	Type	Chain	Res	Link	Chirals	Torsions	Rings
2	WA3	A	301	-	-	16/36/156/156	0/8/8/8
2	WA3	C	301	-	-	16/36/156/156	0/8/8/8
2	WA3	B	301	-	-	18/36/156/156	0/8/8/8
2	WA3	D	301	-	-	17/36/156/156	0/8/8/8

All (8) bond length outliers are listed below:

Mol	Chain	Res	Type	Atoms	Z	Observed(Å)	Ideal(Å)
2	D	301	WA3	C27-N4	-4.76	1.38	1.46
2	A	301	WA3	C27-N4	-4.73	1.38	1.46
2	B	301	WA3	C27-N4	-4.26	1.39	1.46
2	C	301	WA3	C27-N4	-4.16	1.39	1.46
2	B	301	WA3	C16-N1	-3.45	1.40	1.46
2	C	301	WA3	C16-N1	-2.97	1.41	1.46
2	A	301	WA3	C16-N1	-2.85	1.41	1.46
2	D	301	WA3	C16-N1	-2.16	1.42	1.46

All (29) bond angle outliers are listed below:

Mol	Chain	Res	Type	Atoms	Z	Observed(°)	Ideal(°)
2	A	301	WA3	C27-N4-N5	5.51	130.93	120.28
2	A	301	WA3	C27-N4-C28	-5.15	118.44	129.27
2	D	301	WA3	C27-N4-N5	5.06	130.06	120.28
2	C	301	WA3	C27-N4-N5	5.01	129.97	120.28
2	C	301	WA3	C27-N4-C28	-4.81	119.16	129.27
2	D	301	WA3	C27-N4-C28	-4.80	119.18	129.27
2	B	301	WA3	C27-N4-N5	4.77	129.50	120.28
2	A	301	WA3	C16-N1-N2	4.60	129.18	120.28
2	B	301	WA3	C27-N4-C28	-4.57	119.65	129.27
2	C	301	WA3	C16-N1-N2	4.41	128.81	120.28
2	D	301	WA3	C16-N1-N2	4.29	128.57	120.28
2	A	301	WA3	C16-N1-C15	-4.27	120.30	129.27
2	C	301	WA3	C16-N1-C15	-4.17	120.50	129.27
2	D	301	WA3	C16-N1-C15	-4.03	120.79	129.27
2	A	301	WA3	C26-C27-N4	3.32	122.90	113.49
2	B	301	WA3	C26-C27-N4	3.21	122.58	113.49
2	D	301	WA3	C26-C27-N4	3.18	122.49	113.49
2	C	301	WA3	C26-C27-N4	3.11	122.31	113.49
2	B	301	WA3	O11-C11-C12	-2.99	101.48	106.49
2	C	301	WA3	O11-C11-C12	-2.89	101.65	106.49
2	A	301	WA3	O11-C11-C12	-2.75	101.88	106.49
2	C	301	WA3	O17-C17-C16	-2.74	103.15	106.78
2	D	301	WA3	O11-C11-C12	-2.52	102.26	106.49
2	D	301	WA3	O41-C41-C42	2.47	112.56	106.44
2	C	301	WA3	O41-C41-C42	2.46	112.55	106.44
2	B	301	WA3	O41-C41-C42	2.46	112.54	106.44
2	A	301	WA3	O41-C41-C42	2.44	112.48	106.44
2	A	301	WA3	O17-C17-C16	-2.10	104.00	106.78
2	B	301	WA3	C16-N1-N2	2.02	124.18	120.28

There are no chirality outliers.

All (67) torsion outliers are listed below:

Mol	Chain	Res	Type	Atoms
2	A	301	WA3	C26-C27-N4-N5
2	A	301	WA3	C26-C27-N4-C28
2	A	301	WA3	O32-C36-S4-C37
2	A	301	WA3	C35-C36-S4-C37
2	A	301	WA3	S3-C31-C32-O32
2	A	301	WA3	S3-C31-C32-C33
2	B	301	WA3	C17-C16-N1-C15
2	B	301	WA3	O32-C36-S4-C37
2	B	301	WA3	C35-C36-S4-C37

Continued on next page...

Continued from previous page...

Mol	Chain	Res	Type	Atoms
2	B	301	WA3	C28-C29-C30-S3
2	B	301	WA3	S3-C31-C32-O32
2	B	301	WA3	S3-C31-C32-C33
2	C	301	WA3	O32-C36-S4-C37
2	C	301	WA3	C35-C36-S4-C37
2	C	301	WA3	S3-C31-C32-O32
2	C	301	WA3	S3-C31-C32-C33
2	D	301	WA3	O32-C36-S4-C37
2	D	301	WA3	C35-C36-S4-C37
2	D	301	WA3	C28-C29-C30-S3
2	D	301	WA3	S3-C31-C32-O32
2	D	301	WA3	S3-C31-C32-C33
2	A	301	WA3	O41-C41-C42-O42
2	B	301	WA3	O41-C41-C42-O42
2	C	301	WA3	O41-C41-C42-O42
2	D	301	WA3	O41-C41-C42-O42
2	A	301	WA3	O17-C21-O21-C22
2	B	301	WA3	O17-C21-O21-C22
2	C	301	WA3	O17-C21-O21-C22
2	D	301	WA3	O17-C21-O21-C22
2	A	301	WA3	C40-C41-C42-O42
2	A	301	WA3	C20-C21-O21-C22
2	B	301	WA3	C20-C21-O21-C22
2	C	301	WA3	C20-C21-O21-C22
2	D	301	WA3	C20-C21-O21-C22
2	D	301	WA3	C40-C41-C42-O42
2	C	301	WA3	C40-C41-C42-O42
2	B	301	WA3	C40-C41-C42-O42
2	A	301	WA3	N1-C16-C17-C18
2	A	301	WA3	C25-C26-C27-N4
2	B	301	WA3	N1-C16-C17-C18
2	B	301	WA3	C25-C26-C27-N4
2	C	301	WA3	N1-C16-C17-C18
2	C	301	WA3	C25-C26-C27-N4
2	D	301	WA3	N1-C16-C17-C18
2	D	301	WA3	C25-C26-C27-N4
2	B	301	WA3	C17-C16-N1-N2
2	B	301	WA3	C26-C27-N4-N5
2	C	301	WA3	C26-C27-N4-N5
2	D	301	WA3	C26-C27-N4-N5
2	B	301	WA3	C26-C27-N4-C28
2	C	301	WA3	C26-C27-N4-C28

Continued on next page...

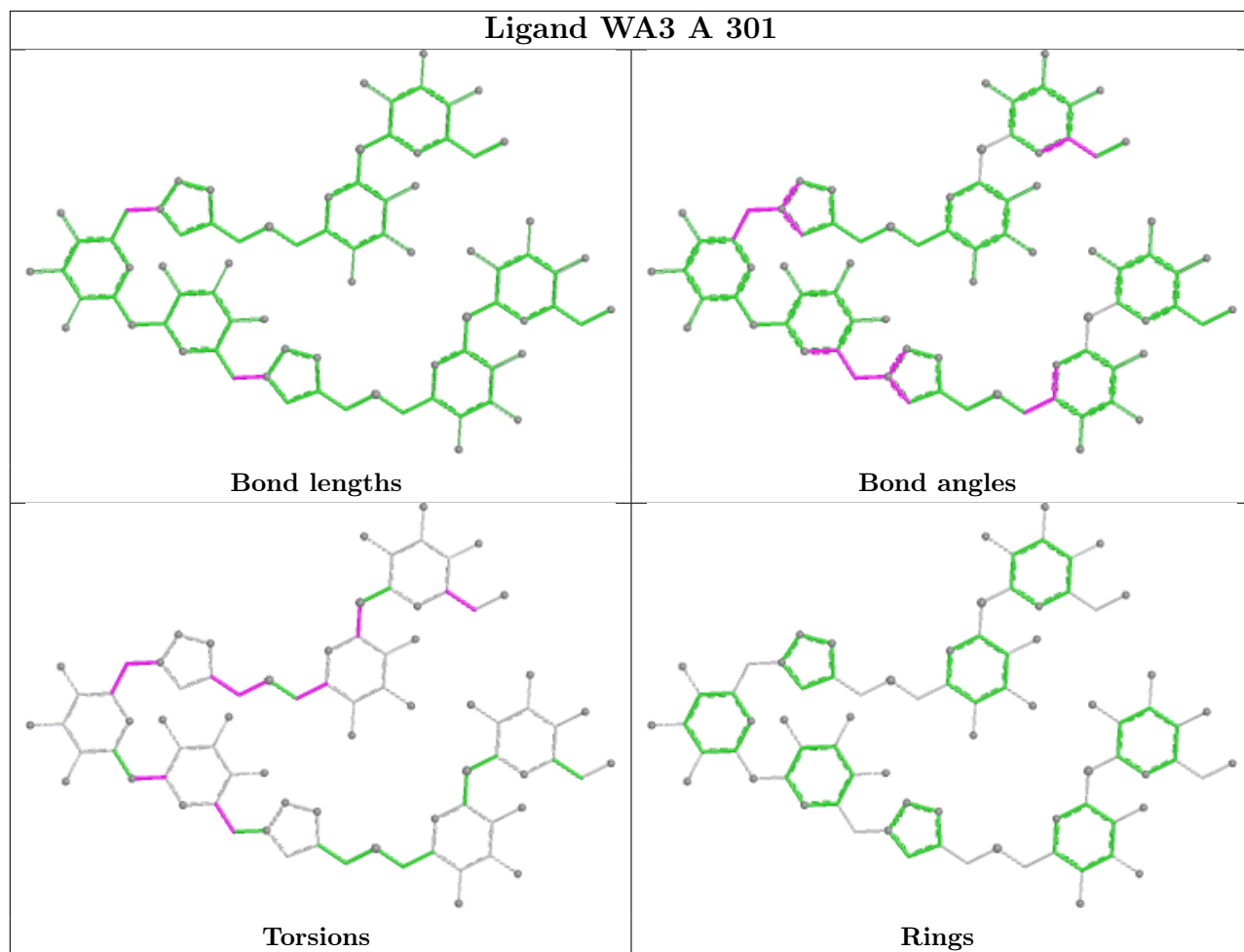
Continued from previous page...

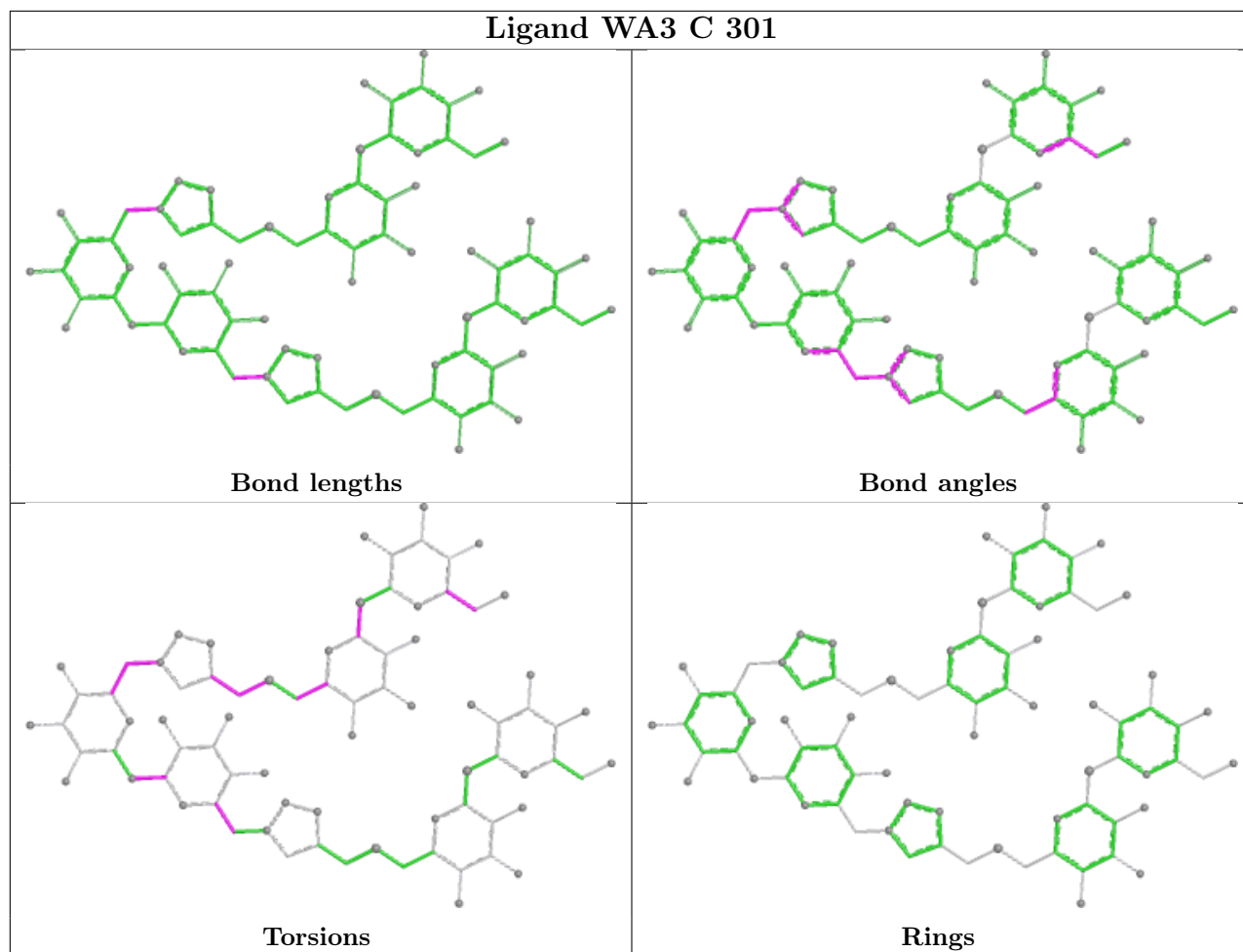
Mol	Chain	Res	Type	Atoms
2	D	301	WA3	C26-C27-N4-C28
2	C	301	WA3	C28-C29-C30-S3
2	A	301	WA3	N1-C16-C17-O17
2	B	301	WA3	N1-C16-C17-O17
2	C	301	WA3	N1-C16-C17-O17
2	D	301	WA3	N1-C16-C17-O17
2	A	301	WA3	C29-C30-S3-C31
2	B	301	WA3	C29-C30-S3-C31
2	C	301	WA3	C29-C30-S3-C31
2	A	301	WA3	N6-C29-C30-S3
2	B	301	WA3	N6-C29-C30-S3
2	C	301	WA3	N6-C29-C30-S3
2	D	301	WA3	N6-C29-C30-S3
2	A	301	WA3	C28-C29-C30-S3
2	D	301	WA3	O11-C11-C12-S2
2	D	301	WA3	C29-C30-S3-C31

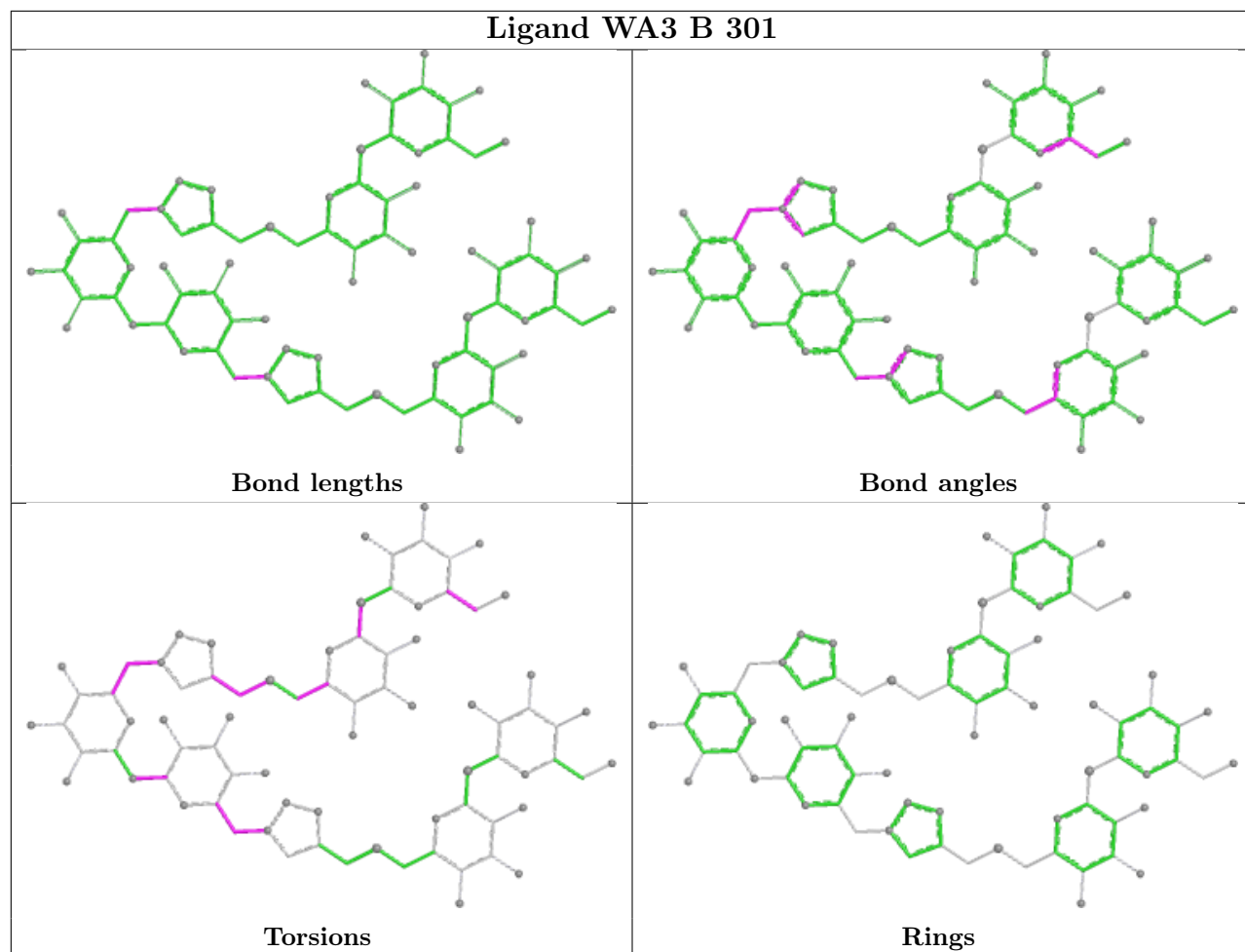
There are no ring outliers.

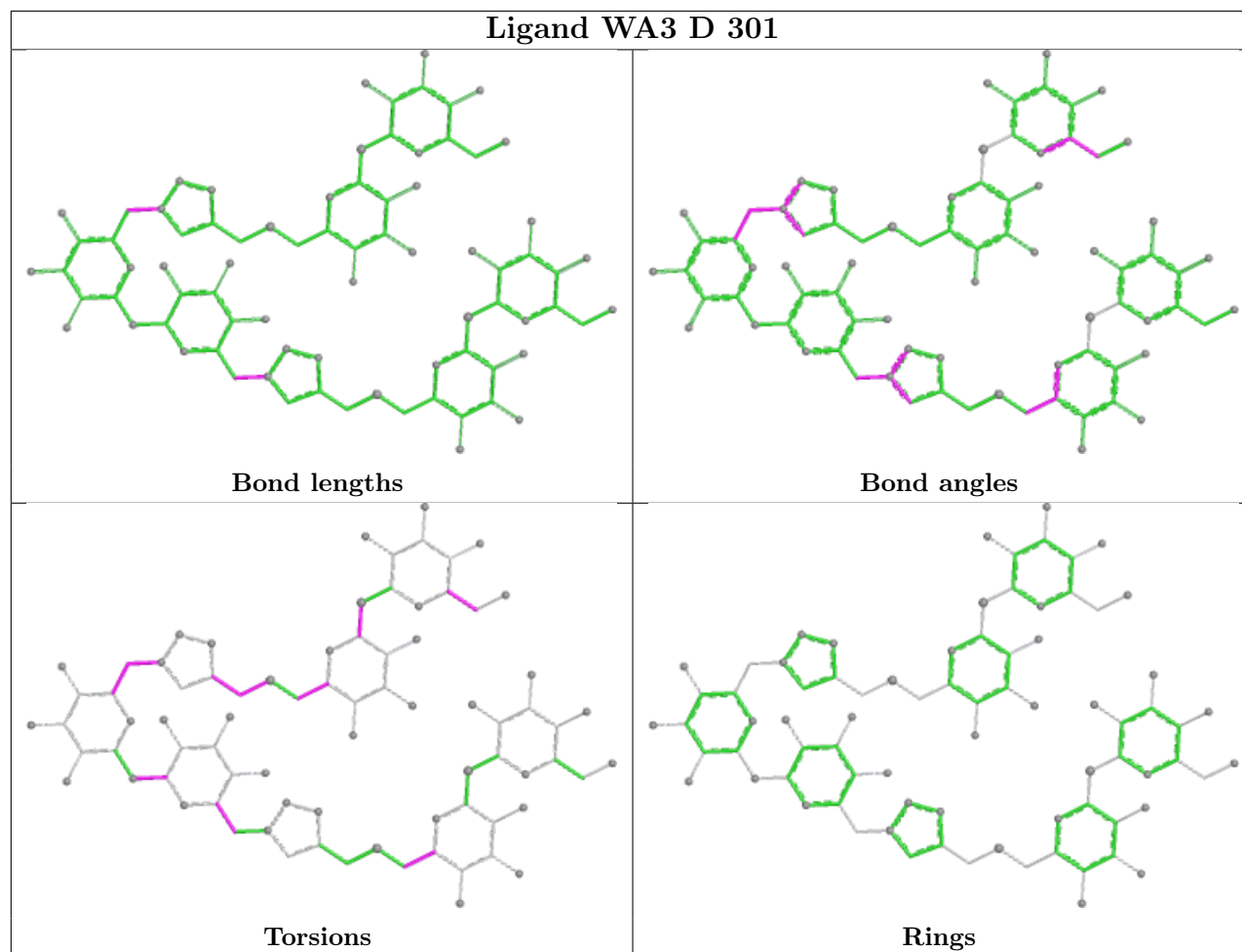
No monomer is involved in short contacts.

The following is a two-dimensional graphical depiction of Mogul quality analysis of bond lengths, bond angles, torsion angles, and ring geometry for all instances of the Ligand of Interest. In addition, ligands with molecular weight > 250 and outliers as shown on the validation Tables will also be included. For torsion angles, if less than 5% of the Mogul distribution of torsion angles is within 10 degrees of the torsion angle in question, then that torsion angle is considered an outlier. Any bond that is central to one or more torsion angles identified as an outlier by Mogul will be highlighted in the graph. For rings, the root-mean-square deviation (RMSD) between the ring in question and similar rings identified by Mogul is calculated over all ring torsion angles. If the average RMSD is greater than 60 degrees and the minimal RMSD between the ring in question and any Mogul-identified rings is also greater than 60 degrees, then that ring is considered an outlier. The outliers are highlighted in purple. The color gray indicates Mogul did not find sufficient equivalents in the CSD to analyse the geometry.









5.7 Other polymers [i](#)

There are no such residues in this entry.

5.8 Polymer linkage issues [i](#)

There are no chain breaks in this entry.

6 Fit of model and data [i](#)

6.1 Protein, DNA and RNA chains [i](#)

In the following table, the column labelled ‘#RSRZ > 2’ contains the number (and percentage) of RSRZ outliers, followed by percent RSRZ outliers for the chain as percentile scores relative to all X-ray entries and entries of similar resolution. The OWAB column contains the minimum, median, 95th percentile and maximum values of the occupancy-weighted average B-factor per residue. The column labelled ‘Q < 0.9’ lists the number of (and percentage) of residues with an average occupancy less than 0.9.

Mol	Chain	Analysed	<RSRZ>	#RSRZ>2	OWAB(Å ²)	Q<0.9
1	A	232/236 (98%)	0.30	12 (5%) 33 34	18, 27, 43, 104	0
1	B	232/236 (98%)	0.21	8 (3%) 48 52	18, 25, 40, 91	0
1	C	232/236 (98%)	1.73	84 (36%) 1 1	19, 36, 71, 93	0
1	D	232/236 (98%)	0.76	39 (16%) 4 4	19, 28, 53, 93	0
All	All	928/944 (98%)	0.75	143 (15%) 5 5	18, 28, 59, 104	0

All (143) RSRZ outliers are listed below:

Mol	Chain	Res	Type	RSRZ
1	C	232	THR	7.6
1	B	232	THR	7.2
1	C	101	ILE	6.6
1	A	232	THR	6.5
1	C	181	ASP	6.5
1	D	232	THR	6.0
1	C	29	ASN	5.8
1	C	129	GLU	5.7
1	C	82	ALA	5.7
1	C	212	LEU	5.6
1	C	37	LEU	5.4
1	A	181	ASP	5.4
1	C	79	TYR	5.3
1	C	38	ASN	5.3
1	C	102	GLY	5.2
1	C	81	PRO	5.0
1	C	78	ASP	5.0
1	C	77	LYS	5.0
1	B	181	ASP	4.9
1	C	108	VAL	4.9
1	C	213	GLY	4.9

Continued on next page...

Continued from previous page...

Mol	Chain	Res	Type	RSRZ
1	D	16	PRO	4.9
1	C	179	THR	4.8
1	C	36	ASN	4.7
1	C	100	SER	4.7
1	C	114	ALA	4.7
1	C	214	GLY	4.7
1	C	130	TYR	4.6
1	C	76	ILE	4.4
1	C	107	GLY	4.4
1	D	58	ALA	4.4
1	C	40	VAL	4.4
1	C	103	GLY	4.3
1	C	39	LYS	4.3
1	C	14	GLY	4.3
1	C	111	THR	4.2
1	C	125	TYR	4.2
1	A	183	GLY	4.2
1	C	99	GLY	4.1
1	C	113	GLY	4.1
1	C	98	ALA	4.0
1	B	179	THR	4.0
1	C	128	SER	3.9
1	D	78	ASP	3.9
1	C	27	LEU	3.9
1	C	26	VAL	3.9
1	D	181	ASP	3.9
1	C	110	ASP	3.8
1	C	80	ASP	3.7
1	B	180	ASN	3.7
1	C	115	GLY	3.7
1	A	182	ASN	3.6
1	C	97	PRO	3.6
1	C	182	ASN	3.6
1	C	106	LEU	3.5
1	C	43	VAL	3.5
1	C	210	GLY	3.5
1	C	127	ASN	3.4
1	D	38	ASN	3.4
1	D	13	GLU	3.4
1	C	211	SER	3.4
1	C	145	VAL	3.3
1	D	76	ILE	3.3

Continued on next page...

Continued from previous page...

Mol	Chain	Res	Type	RSRZ
1	C	180	ASN	3.3
1	D	59	THR	3.2
1	C	95	GLN	3.2
1	C	215	ARG	3.2
1	D	18	ILE	3.2
1	C	35	THR	3.2
1	D	15	ASN	3.2
1	C	13	GLU	3.2
1	C	24	VAL	3.1
1	C	42	SER	3.1
1	C	109	SER	3.1
1	D	17	ALA	3.1
1	C	96	ILE	3.1
1	C	104	GLY	3.1
1	C	112	LYS	3.1
1	A	13	GLU	3.1
1	D	217	ILE	3.0
1	C	216	GLN	3.0
1	A	50	MET	3.0
1	C	11	PHE	2.9
1	D	29	ASN	2.9
1	C	28	SER	2.9
1	D	1	ALA	2.9
1	A	231	THR	2.9
1	A	180	ASN	2.9
1	C	12	SER	2.8
1	C	126	SER	2.8
1	D	8	PHE	2.8
1	D	77	LYS	2.8
1	D	26	VAL	2.8
1	C	41	ASN	2.8
1	C	32	ILE	2.8
1	C	10	SER	2.7
1	D	14	GLY	2.7
1	D	10	SER	2.6
1	D	39	LYS	2.6
1	C	131	ASN	2.6
1	C	217	ILE	2.6
1	B	182	ASN	2.6
1	C	15	ASN	2.6
1	C	208	ALA	2.6
1	C	30	GLY	2.6

Continued on next page...

Continued from previous page...

Mol	Chain	Res	Type	RSRZ
1	D	111	THR	2.6
1	D	37	LEU	2.5
1	D	80	ASP	2.5
1	C	74	LYS	2.5
1	D	9	ASN	2.5
1	C	50	MET	2.5
1	C	25	THR	2.5
1	D	182	ASN	2.4
1	C	22	GLY	2.4
1	D	50	MET	2.4
1	D	231	THR	2.4
1	A	14	GLY	2.4
1	D	40	VAL	2.4
1	C	34	LEU	2.3
1	D	32	ILE	2.3
1	C	132	ASP	2.3
1	B	13	GLU	2.3
1	D	11	PHE	2.3
1	D	213	GLY	2.3
1	D	12	SER	2.3
1	C	83	ASP	2.3
1	C	151	VAL	2.2
1	D	24	VAL	2.2
1	B	185	ILE	2.2
1	C	105	THR	2.2
1	A	185	ILE	2.1
1	C	75	ASP	2.1
1	A	20	PHE	2.1
1	A	230	ILE	2.1
1	C	18	ILE	2.1
1	C	93	ASP	2.1
1	B	50	MET	2.1
1	D	36	ASN	2.1
1	D	19	ASN	2.1
1	D	55	TRP	2.1
1	D	212	LEU	2.0
1	C	48	TYR	2.0
1	D	79	TYR	2.0

6.2 Non-standard residues in protein, DNA, RNA chains [\(i\)](#)

There are no non-standard protein/DNA/RNA residues in this entry.

6.3 Carbohydrates [i](#)

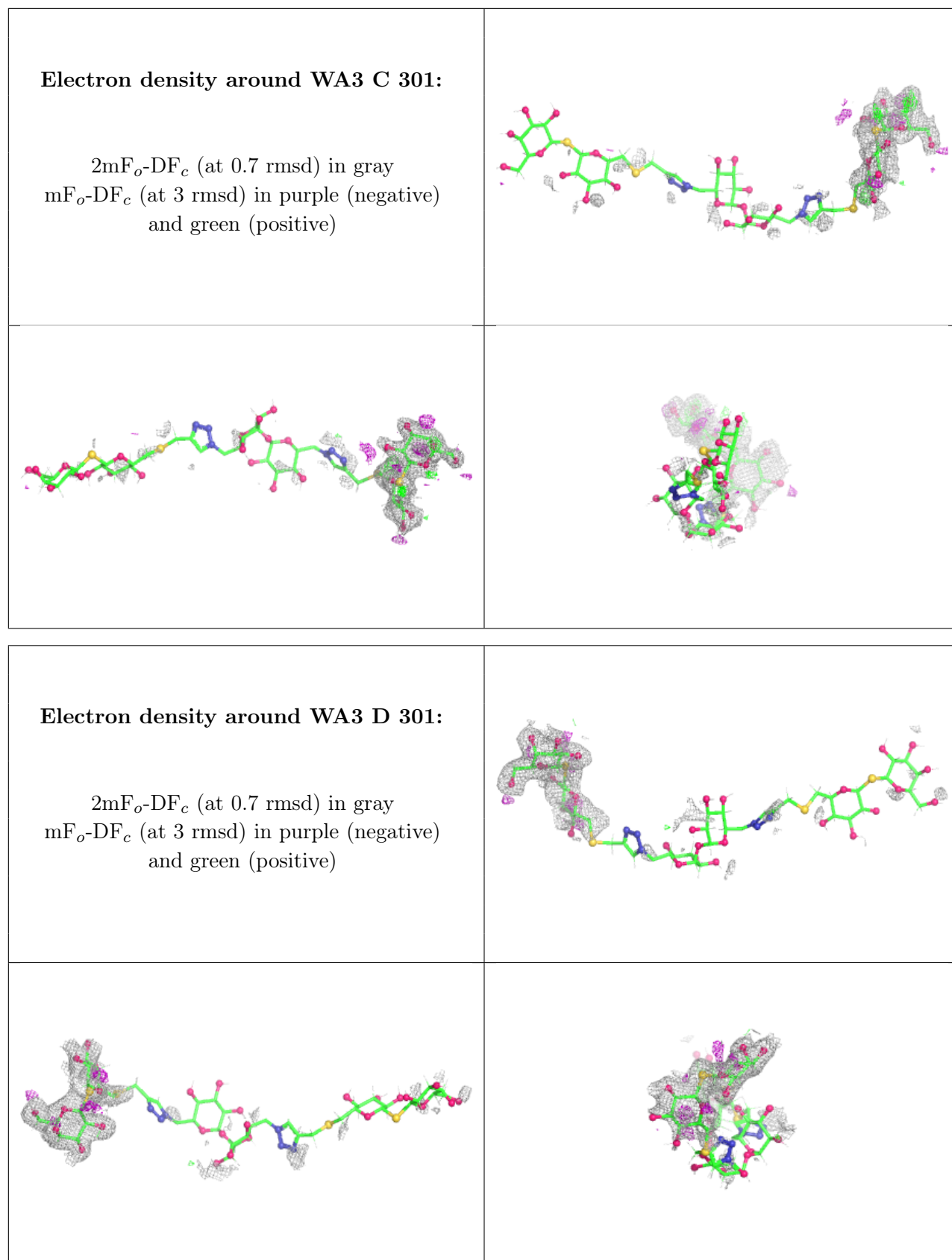
There are no oligosaccharides in this entry.

6.4 Ligands [i](#)

In the following table, the Atoms column lists the number of modelled atoms in the group and the number defined in the chemical component dictionary. The B-factors column lists the minimum, median, 95th percentile and maximum values of B factors of atoms in the group. The column labelled 'Q< 0.9' lists the number of atoms with occupancy less than 0.9.

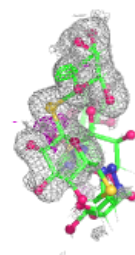
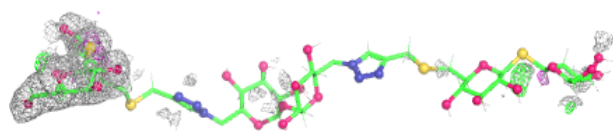
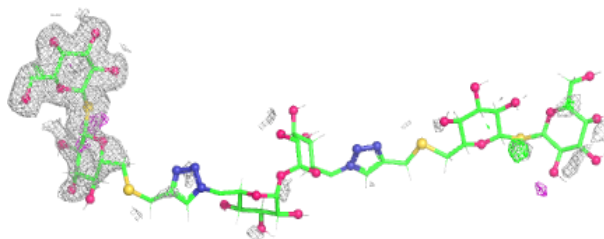
Mol	Type	Chain	Res	Atoms	RSCC	RSR	B-factors(Å ²)	Q<0.9
2	WA3	C	301	79/79	0.56	0.22	70,97,101,101	99
2	WA3	D	301	79/79	0.75	0.16	35,98,101,101	98
4	CA	C	303	1/1	0.89	0.17	49,49,49,49	0
2	WA3	A	301	79/79	0.91	0.12	29,96,101,101	99
2	WA3	B	301	79/79	0.93	0.10	23,97,101,101	102
3	MN	A	302	1/1	0.95	0.10	35,35,35,35	0
4	CA	A	303	1/1	0.97	0.05	25,25,25,25	0
4	CA	D	303	1/1	0.97	0.04	26,26,26,26	0
3	MN	C	302	1/1	0.98	0.07	48,48,48,48	0
4	CA	B	303	1/1	0.99	0.03	23,23,23,23	0
3	MN	D	302	1/1	0.99	0.12	36,36,36,36	0
3	MN	B	302	1/1	0.99	0.08	31,31,31,31	0

The following is a graphical depiction of the model fit to experimental electron density of all instances of the Ligand of Interest. In addition, ligands with molecular weight > 250 and outliers as shown on the geometry validation Tables will also be included. Each fit is shown from different orientation to approximate a three-dimensional view.

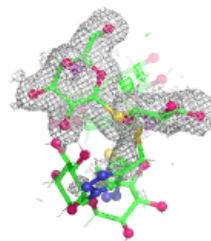
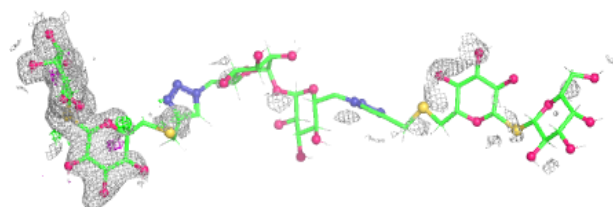
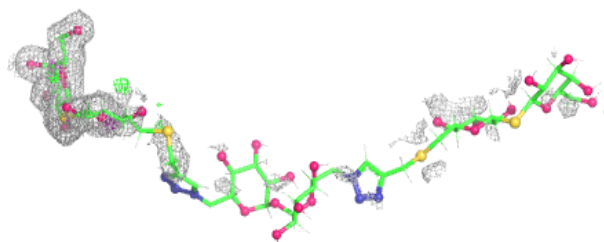


Electron density around WA3 A 301:

$2mF_o-DF_c$ (at 0.7 rmsd) in gray
 mF_o-DF_c (at 3 rmsd) in purple (negative)
and green (positive)

**Electron density around WA3 B 301:**

$2mF_o-DF_c$ (at 0.7 rmsd) in gray
 mF_o-DF_c (at 3 rmsd) in purple (negative)
and green (positive)



6.5 Other polymers [i](#)

There are no such residues in this entry.