



# Full wwPDB X-ray Structure Validation Report ⓘ

Mar 15, 2026 – 02:09 PM UTC

PDB ID : 6VDW / pdb\_00006vdw  
Title : Crystal Structure of Dehaloperoxidase B in Complex with cofactor Manganese(III) Porphyrin and Substrate 4-nitrophenol  
Authors : Ghiladi, R.A.; de Serrano, V.S.; McGuire, A.; Malewschik, T.  
Deposited on : 2019-12-27  
Resolution : 1.50 Å(reported)

This is a Full wwPDB X-ray Structure Validation Report for a publicly released PDB entry.

We welcome your comments at [validation@mail.wwpdb.org](mailto:validation@mail.wwpdb.org)

A user guide is available at

<https://www.wwpdb.org/validation/2017/XrayValidationReportHelp>

with specific help available everywhere you see the ⓘ symbol.

The types of validation reports are described at

<http://www.wwpdb.org/validation/2017/FAQs#types>.

---

The following versions of software and data (see [references ⓘ](#)) were used in the production of this report:

MolProbity : 4-5-2 with Phenix2.0  
Mogul : 2022.3.0, CSD as543be (2022)  
Xtrriage (Phenix) : 2.0  
EDS : 3.0  
Buster-report : wwPDB partial adaption of 1.1.7 (2018)  
Percentile statistics : 20250101.v01 (using entries in the PDB archive January 1st 2025)  
CCP4 : 9.0.010 (Gargrove)  
Density-Fitness : 1.0.12  
Ideal geometry (proteins) : Engh & Huber (2001)  
Ideal geometry (DNA, RNA) : Parkinson et al. (1996)  
Validation Pipeline (wwPDB-VP) : 2.49

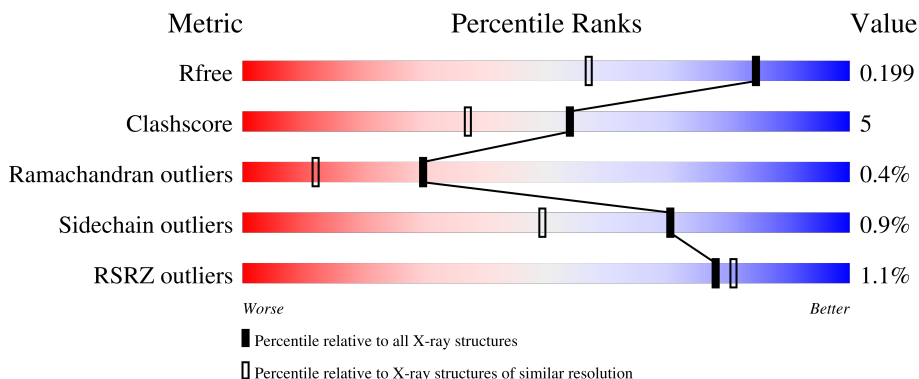
# 1 Overall quality at a glance

The following experimental techniques were used to determine the structure:

*X-RAY DIFFRACTION*

The reported resolution of this entry is 1.50 Å.

Percentile scores (ranging between 0-100) for global validation metrics of the entry are shown in the following graphic. The table shows the number of entries on which the scores are based.



Metric	Whole archive (#Entries)	Similar resolution (#Entries, resolution range(Å))
$R_{free}$	180053	4037 (1.50-1.50)
Clashscore	190562	4235 (1.50-1.50)
Ramachandran outliers	187476	4153 (1.50-1.50)
Sidechain outliers	187428	4150 (1.50-1.50)
RSRZ outliers	180081	4039 (1.50-1.50)

The table below summarises the geometric issues observed across the polymeric chains and their fit to the electron density. The red, orange, yellow and green segments of the lower bar indicate the fraction of residues that contain outliers for  $\geq 3$ , 2, 1 and 0 types of geometric quality criteria respectively. A grey segment represents the fraction of residues that are not modelled. The numeric value for each fraction is indicated below the corresponding segment, with a dot representing fractions  $\leq 5\%$ . The upper red bar (where present) indicates the fraction of residues that have poor fit to the electron density. The numeric value is given above the bar.

Mol	Chain	Length	Quality of chain
1	A	137	
1	B	137	

The following table lists non-polymeric compounds, carbohydrate monomers and non-standard residues in protein, DNA, RNA chains that are outliers for geometric or electron-density-fit criteria:

Mol	Type	Chain	Res	Chirality	Geometry	Clashes	Electron density
5	PEG	A	209	-	-	X	-

## 2 Entry composition [i](#)

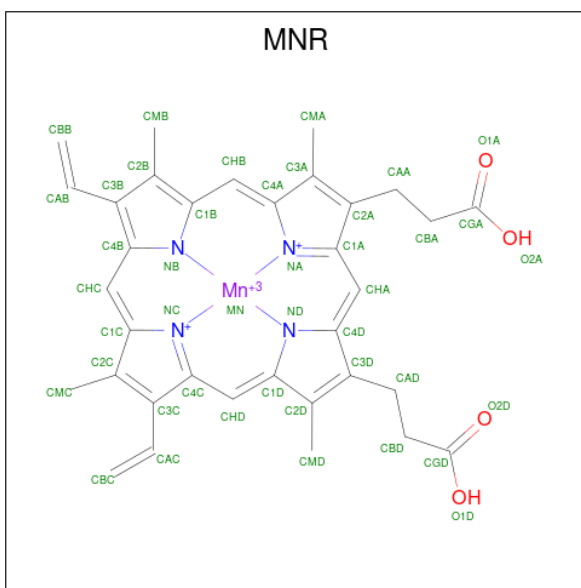
There are 7 unique types of molecules in this entry. The entry contains 2900 atoms, of which 0 are hydrogens and 0 are deuteriums.

In the tables below, the ZeroOcc column contains the number of atoms modelled with zero occupancy, the AltConf column contains the number of residues with at least one atom in alternate conformation and the Trace column contains the number of residues modelled with at most 2 atoms.

- Molecule 1 is a protein called Dehaloperoxidase B.

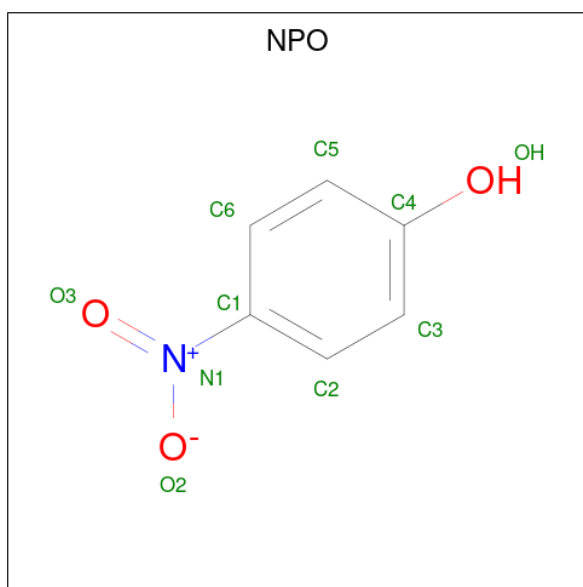
Mol	Chain	Residues	Atoms					ZeroOcc	AltConf	Trace
			Total	C	N	O	S			
1	A	137	Total	C	N	O	S	0	25	0
			1241	776	211	247	7			
1	B	137	Total	C	N	O	S	0	28	0
			1256	783	212	254	7			

- Molecule 2 is PROTOPORPHYRIN IX CONTAINING MN (CCD ID: MNR) (formula:  $C_{34}H_{32}MnN_4O_4$ ) (labeled as "Ligand of Interest" by depositor).



Mol	Chain	Residues	Atoms				ZeroOcc	AltConf	
			Total	C	Mn	N			O
2	A	1	Total	C	Mn	N	O	0	0
			43	34	1	4	4		
2	B	1	Total	C	Mn	N	O	0	0
			43	34	1	4	4		

- Molecule 3 is P-NITROPHENOL (CCD ID: NPO) (formula:  $C_6H_5NO_3$ ) (labeled as "Ligand of Interest" by depositor).



Mol	Chain	Residues	Atoms			ZeroOcc	AltConf	
3	A	1	Total	C	N	O	0	0
			10	6	1	3		
3	B	1	Total	C	N	O	0	0
			10	6	1	3		

- Molecule 4 is 1,2-ETHANEDIOL (CCD ID: EDO) (formula: C<sub>2</sub>H<sub>6</sub>O<sub>2</sub>).



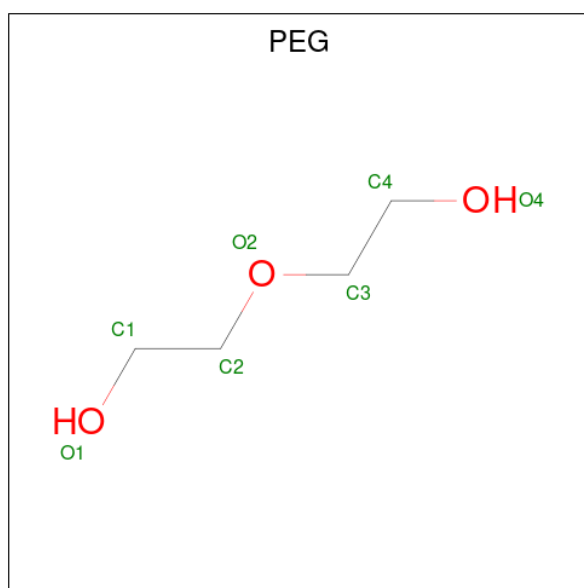
Mol	Chain	Residues	Atoms		ZeroOcc	AltConf	
4	A	1	Total	C	O	0	0
			4	2	2		
4	A	1	Total	C	O	0	0
			4	2	2		

*Continued on next page...*

Continued from previous page...

Mol	Chain	Residues	Atoms	ZeroOcc	AltConf
4	A	1	Total C O 4 2 2	0	0
4	A	1	Total C O 4 2 2	0	0
4	A	1	Total C O 4 2 2	0	0
4	B	1	Total C O 4 2 2	0	0
4	B	1	Total C O 4 2 2	0	0

- Molecule 5 is DI(HYDROXYETHYL)ETHER (CCD ID: PEG) (formula: C<sub>4</sub>H<sub>10</sub>O<sub>3</sub>).



Mol	Chain	Residues	Atoms	ZeroOcc	AltConf
5	A	1	Total C O 7 4 3	0	0
5	A	1	Total C O 7 4 3	0	0
5	A	1	Total C O 7 4 3	0	0
5	B	1	Total C O 7 4 3	0	0

- Molecule 6 is SULFATE ION (CCD ID: SO4) (formula: O<sub>4</sub>S).



Mol	Chain	Residues	Atoms			ZeroOcc	AltConf
6	B	1	Total	O	S	0	0
			5	4	1		
6	B	1	Total	O	S	0	0
			5	4	1		

- Molecule 7 is water.

Mol	Chain	Residues	Atoms		ZeroOcc	AltConf
7	A	114	Total	O	0	0
			114	114		
7	B	117	Total	O	0	0
			117	117		

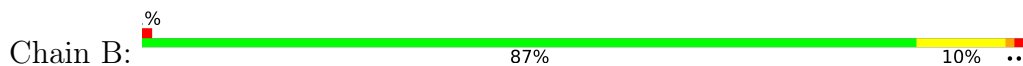
### 3 Residue-property plots [i](#)

These plots are drawn for all protein, RNA, DNA and oligosaccharide chains in the entry. The first graphic for a chain summarises the proportions of the various outlier classes displayed in the second graphic. The second graphic shows the sequence view annotated by issues in geometry and electron density. Residues are color-coded according to the number of geometric quality criteria for which they contain at least one outlier: green = 0, yellow = 1, orange = 2 and red = 3 or more. A red dot above a residue indicates a poor fit to the electron density ( $RSRZ > 2$ ). Stretches of 2 or more consecutive residues without any outlier are shown as a green connector. Residues present in the sample, but not in the model, are shown in grey.

- Molecule 1: Dehaloperoxidase B



- Molecule 1: Dehaloperoxidase B



## 4 Data and refinement statistics

Property	Value	Source
Space group	P 21 21 21	Depositor
Cell constants a, b, c, $\alpha$ , $\beta$ , $\gamma$	59.30Å 67.77Å 67.61Å 90.00° 90.00° 90.00°	Depositor
Resolution (Å)	44.58 – 1.50 44.58 – 1.50	Depositor EDS
% Data completeness (in resolution range)	99.8 (44.58-1.50) 99.8 (44.58-1.50)	Depositor EDS
$R_{merge}$	(Not available)	Depositor
$R_{sym}$	(Not available)	Depositor
$\langle I/\sigma(I) \rangle$ <sup>1</sup>	1.35 (at 1.50Å)	Xtrriage
Refinement program	PHENIX dev_3714	Depositor
R, $R_{free}$	0.164 , 0.199 0.164 , 0.199	Depositor DCC
$R_{free}$ test set	2224 reflections (5.02%)	wwPDB-VP
Wilson B-factor (Å <sup>2</sup> )	15.6	Xtrriage
Anisotropy	0.192	Xtrriage
Bulk solvent $k_{sol}$ (e/Å <sup>3</sup> ), $B_{sol}$ (Å <sup>2</sup> )	0.35 , 37.3	EDS
L-test for twinning <sup>2</sup>	$\langle  L  \rangle = 0.48$ , $\langle L^2 \rangle = 0.31$	Xtrriage
Estimated twinning fraction	0.079 for -h,l,k	Xtrriage
$F_o, F_c$ correlation	0.96	EDS
Total number of atoms	2900	wwPDB-VP
Average B, all atoms (Å <sup>2</sup> )	18.0	wwPDB-VP

Xtrriage's analysis on translational NCS is as follows: *The largest off-origin peak in the Patterson function is 8.97% of the height of the origin peak. No significant pseudotranslation is detected.*

<sup>1</sup>Intensities estimated from amplitudes.

<sup>2</sup>Theoretical values of  $\langle |L| \rangle$ ,  $\langle L^2 \rangle$  for acentric reflections are 0.5, 0.333 respectively for untwinned datasets, and 0.375, 0.2 for perfectly twinned datasets.

## 5 Model quality [i](#)

### 5.1 Standard geometry [i](#)

Bond lengths and bond angles in the following residue types are not validated in this section: NPO, PEG, MNR, SO4, EDO

The Z score for a bond length (or angle) is the number of standard deviations the observed value is removed from the expected value. A bond length (or angle) with  $|Z| > 5$  is considered an outlier worth inspection. RMSZ is the root-mean-square of all Z scores of the bond lengths (or angles).

Mol	Chain	Bond lengths		Bond angles	
		RMSZ	# Z  >5	RMSZ	# Z  >5
1	A	0.73	0/1293	0.80	0/1729
1	B	0.83	2/1313 (0.2%)	1.01	12/1757 (0.7%)
All	All	0.78	2/2606 (0.1%)	0.91	12/3486 (0.3%)

Chiral center outliers are detected by calculating the chiral volume of a chiral center and verifying if the center is modelled as a planar moiety or with the opposite hand. A planarity outlier is detected by checking planarity of atoms in a peptide group, atoms in a mainchain group or atoms of a sidechain that are expected to be planar.

Mol	Chain	#Chirality outliers	#Planarity outliers
1	A	0	2
1	B	0	2
All	All	0	4

All (2) bond length outliers are listed below:

Mol	Chain	Res	Type	Atoms	Z	Observed(Å)	Ideal(Å)
1	B	33	ARG	N-CA	6.72	1.54	1.46
1	B	31	GLU	CA-C	5.77	1.60	1.52

All (12) bond angle outliers are listed below:

Mol	Chain	Res	Type	Atoms	Z	Observed(°)	Ideal(°)
1	B	31	GLU	CA-C-O	-9.56	109.16	120.15
1	B	32[A]	LYS	N-CA-C	-9.27	91.05	110.80
1	B	32[B]	LYS	N-CA-C	-9.27	91.05	110.80
1	B	32[A]	LYS	CA-C-N	-8.08	108.58	120.38
1	B	32[A]	LYS	C-N-CA	-8.08	108.58	120.38
1	B	32[B]	LYS	CA-C-N	-8.08	108.58	120.38
1	B	32[B]	LYS	C-N-CA	-8.08	108.58	120.38

*Continued on next page...*

Continued from previous page...

Mol	Chain	Res	Type	Atoms	Z	Observed(°)	Ideal(°)
1	B	30	ASP	CA-C-N	-7.04	110.02	120.72
1	B	30	ASP	C-N-CA	-7.04	110.02	120.72
1	B	31	GLU	N-CA-C	6.86	119.43	111.48
1	B	33	ARG	CA-C-O	5.28	126.22	120.30
1	B	31	GLU	N-CA-CB	-5.14	102.39	110.35

There are no chirality outliers.

All (4) planarity outliers are listed below:

Mol	Chain	Res	Type	Group
1	A	31	GLU	Mainchain
1	B	31	GLU	Mainchain

## 5.2 Too-close contacts

In the following table, the Non-H and H(model) columns list the number of non-hydrogen atoms and hydrogen atoms in the chain respectively. The H(added) column lists the number of hydrogen atoms added and optimized by MolProbity. The Clashes column lists the number of clashes within the asymmetric unit, whereas Symm-Clashes lists symmetry-related clashes.

Mol	Chain	Non-H	H(model)	H(added)	Clashes	Symm-Clashes
1	A	1241	0	1218	9	0
1	B	1256	0	1215	16	0
2	A	43	0	30	0	0
2	B	43	0	30	1	0
3	A	10	0	5	1	0
3	B	10	0	5	1	0
4	A	20	0	30	2	0
4	B	8	0	12	1	0
5	A	21	0	30	7	0
5	B	7	0	10	3	0
6	B	10	0	0	0	0
7	A	114	0	0	0	0
7	B	117	0	0	3	0
All	All	2900	0	2585	26	0

The all-atom clashscore is defined as the number of clashes found per 1000 atoms (including hydrogen atoms). The all-atom clashscore for this structure is 5.

All (26) close contacts within the same asymmetric unit are listed below, sorted by their clash magnitude.

Atom-1	Atom-2	Interatomic distance (Å)	Clash overlap (Å)
1:B:31:GLU:C	1:B:33:ARG:N	1.70	1.22
1:B:51:LYS:HG2	5:B:205:PEG:H31	1.69	0.74
1:B:118[B]:GLN:H	1:B:118[B]:GLN:CD	2.00	0.69
1:A:56[A]:THR:HG22	3:A:202:NPO:H6	1.75	0.68
1:B:45[B]:GLU:OE1	7:B:302:HOH:O	2.10	0.68
4:A:208:EDO:H11	5:A:209:PEG:O4	1.95	0.66
1:A:96:ASN:HD21	5:A:206:PEG:H21	1.61	0.65
4:A:203:EDO:H21	1:B:57[A]:GLU:OE1	1.99	0.63
1:B:56[A]:THR:HG22	3:B:202:NPO:H3	1.85	0.57
1:B:32[A]:LYS:HE3	7:B:350:HOH:O	2.05	0.57
1:A:51[A]:LYS:NZ	5:A:209:PEG:H32	2.21	0.56
1:A:51[B]:LYS:HE3	5:A:209:PEG:H32	1.87	0.56
1:B:54[B]:ASP:OD2	5:B:205:PEG:H32	2.10	0.52
1:B:77:ALA:O	1:B:81[B]:SER:OG	2.25	0.51
1:A:51[A]:LYS:HZ3	5:A:209:PEG:H32	1.76	0.51
1:A:96:ASN:HD21	5:A:206:PEG:C2	2.25	0.49
1:A:14[A]:ARG:NE	1:A:57:GLU:OE2	2.46	0.49
1:A:14[A]:ARG:HE	1:A:57:GLU:HB2	1.77	0.47
1:B:14[B]:ARG:NH1	7:B:307:HOH:O	2.48	0.46
1:B:86:MET:HE2	1:B:88[A]:GLN:HG2	1.97	0.45
1:B:91:GLY:O	4:B:204:EDO:H22	2.16	0.45
1:A:34[B]:ASN:OD1	5:A:206:PEG:H11	2.15	0.45
1:B:118[B]:GLN:H	1:B:118[B]:GLN:NE2	2.16	0.43
1:B:54[B]:ASP:HB3	5:B:205:PEG:H32	2.01	0.42
1:B:18:GLN:HE21	1:B:53:GLY:HA2	1.84	0.41
1:B:86:MET:HE1	2:B:201:MNR:C4A	2.51	0.40

There are no symmetry-related clashes.

## 5.3 Torsion angles [i](#)

### 5.3.1 Protein backbone [i](#)

In the following table, the Percentiles column shows the percent Ramachandran outliers of the chain as a percentile score with respect to all X-ray entries followed by that with respect to entries of similar resolution.

The Analysed column shows the number of residues for which the backbone conformation was analysed, and the total number of residues.

Mol	Chain	Analysed	Favoured	Allowed	Outliers	Percentiles
1	A	160/137 (117%)	158 (99%)	2 (1%)	0	<b>100</b> <b>100</b>

*Continued on next page...*

Continued from previous page...

Mol	Chain	Analysed	Favoured	Allowed	Outliers	Percentiles	
1	B	163/137 (119%)	160 (98%)	1 (1%)	2 (1%)	10	2
All	All	323/274 (118%)	318 (98%)	3 (1%)	2 (1%)	30	6

All (2) Ramachandran outliers are listed below:

Mol	Chain	Res	Type
1	B	32[A]	LYS
1	B	32[B]	LYS

### 5.3.2 Protein sidechains [i](#)

In the following table, the Percentiles column shows the percent sidechain outliers of the chain as a percentile score with respect to all X-ray entries followed by that with respect to entries of similar resolution.

The Analysed column shows the number of residues for which the sidechain conformation was analysed, and the total number of residues.

Mol	Chain	Analysed	Rotameric	Outliers	Percentiles	
1	A	139/116 (120%)	137 (99%)	2 (1%)	59	33
1	B	141/116 (122%)	139 (99%)	2 (1%)	59	33
All	All	280/232 (121%)	276 (99%)	4 (1%)	70	33

All (4) residues with a non-rotameric sidechain are listed below:

Mol	Chain	Res	Type
1	A	106[A]	GLU
1	A	106[B]	GLU
1	B	88[A]	GLN
1	B	88[B]	GLN

Sometimes sidechains can be flipped to improve hydrogen bonding and reduce clashes. All (3) such sidechains are listed below:

Mol	Chain	Res	Type
1	A	18	GLN
1	A	96	ASN
1	B	18	GLN

### 5.3.3 RNA [i](#)

There are no RNA molecules in this entry.

## 5.4 Non-standard residues in protein, DNA, RNA chains [i](#)

There are no non-standard protein/DNA/RNA residues in this entry.

## 5.5 Carbohydrates [i](#)

There are no oligosaccharides in this entry.

## 5.6 Ligand geometry [i](#)

17 ligands are modelled in this entry.

In the following table, the Counts columns list the number of bonds (or angles) for which Mogul statistics could be retrieved, the number of bonds (or angles) that are observed in the model and the number of bonds (or angles) that are defined in the Chemical Component Dictionary. The Link column lists molecule types, if any, to which the group is linked. The Z score for a bond length (or angle) is the number of standard deviations the observed value is removed from the expected value. A bond length (or angle) with  $|Z| > 2$  is considered an outlier worth inspection. RMSZ is the root-mean-square of all Z scores of the bond lengths (or angles).

Mol	Type	Chain	Res	Link	Bond lengths			Bond angles		
					Counts	RMSZ	# Z  > 2	Counts	RMSZ	# Z  > 2
3	NPO	B	202	-	10,10,10	1.21	2 (20%)	11,13,13	1.53	2 (18%)
3	NPO	A	202	-	10,10,10	1.49	1 (10%)	11,13,13	2.60	5 (45%)
6	SO4	B	206	-	4,4,4	0.31	0	6,6,6	2.48	3 (50%)
4	EDO	A	204	-	3,3,3	0.62	0	2,2,2	0.67	0
6	SO4	B	207	-	4,4,4	0.50	0	6,6,6	2.24	3 (50%)
4	EDO	A	208	-	3,3,3	0.30	0	2,2,2	0.56	0
5	PEG	A	209	-	6,6,6	0.59	0	5,5,5	0.75	0
4	EDO	B	203	-	3,3,3	0.81	0	2,2,2	0.53	0
5	PEG	B	205	-	6,6,6	0.46	0	5,5,5	0.82	0
4	EDO	A	207	-	3,3,3	0.81	0	2,2,2	0.15	0
2	MNR	A	201	1	37,50,50	4.60	28 (75%)	34,82,82	3.32	16 (47%)
4	EDO	B	204	-	3,3,3	0.43	0	2,2,2	0.49	0
2	MNR	B	201	1	37,50,50	4.47	23 (62%)	34,82,82	3.16	16 (47%)
5	PEG	A	206	-	6,6,6	0.52	0	5,5,5	0.87	0
4	EDO	A	205	-	3,3,3	0.72	0	2,2,2	0.61	0
4	EDO	A	203	-	3,3,3	0.58	0	2,2,2	0.61	0

Mol	Type	Chain	Res	Link	Bond lengths			Bond angles		
					Counts	RMSZ	# Z  > 2	Counts	RMSZ	# Z  > 2
5	PEG	A	210	-	6,6,6	0.38	0	5,5,5	0.55	0

In the following table, the Chirals column lists the number of chiral outliers, the number of chiral centers analysed, the number of these observed in the model and the number defined in the Chemical Component Dictionary. Similar counts are reported in the Torsion and Rings columns. '-' means no outliers of that kind were identified.

Mol	Type	Chain	Res	Link	Chirals	Torsions	Rings
3	NPO	B	202	-	-	0/2/4/4	0/1/1/1
3	NPO	A	202	-	-	0/2/4/4	0/1/1/1
4	EDO	A	204	-	-	0/1/1/1	-
4	EDO	A	208	-	-	0/1/1/1	-
5	PEG	A	209	-	-	2/4/4/4	-
4	EDO	B	203	-	-	0/1/1/1	-
5	PEG	B	205	-	-	1/4/4/4	-
4	EDO	A	207	-	-	0/1/1/1	-
2	MNR	A	201	1	-	4/12/94/94	-
4	EDO	B	204	-	-	0/1/1/1	-
2	MNR	B	201	1	-	4/12/94/94	-
5	PEG	A	206	-	-	3/4/4/4	-
4	EDO	A	205	-	-	0/1/1/1	-
4	EDO	A	203	-	-	0/1/1/1	-
5	PEG	A	210	-	-	4/4/4/4	-

All (54) bond length outliers are listed below:

Mol	Chain	Res	Type	Atoms	Z	Observed(Å)	Ideal(Å)
2	A	201	MNR	CMD-C2D	10.63	1.72	1.51
2	B	201	MNR	CMD-C2D	9.57	1.70	1.51
2	B	201	MNR	CMB-C2B	8.82	1.69	1.51
2	B	201	MNR	C3C-C2C	8.48	1.54	1.37
2	B	201	MNR	C3D-C2D	-8.17	1.13	1.37
2	A	201	MNR	CMC-C2C	-7.57	1.38	1.50
2	A	201	MNR	C3D-C2D	-7.43	1.15	1.37
2	A	201	MNR	C3C-C2C	7.38	1.52	1.37
2	A	201	MNR	CMB-C2B	7.27	1.66	1.51
2	A	201	MNR	CAC-C3C	-7.12	1.39	1.47
2	A	201	MNR	CBD-CGD	6.97	1.66	1.50
2	B	201	MNR	CMC-C2C	-6.60	1.40	1.50
2	A	201	MNR	C1C-NC	6.57	1.48	1.37
2	B	201	MNR	CBD-CGD	6.56	1.65	1.50

Continued on next page...

Continued from previous page...

Mol	Chain	Res	Type	Atoms	Z	Observed(Å)	Ideal(Å)
2	A	201	MNR	CAD-C3D	6.20	1.67	1.52
2	B	201	MNR	CAD-C3D	5.87	1.66	1.52
2	B	201	MNR	C1C-NC	5.81	1.47	1.37
2	B	201	MNR	O2A-CGA	-5.80	1.11	1.30
2	B	201	MNR	CAC-C3C	-5.80	1.40	1.47
2	A	201	MNR	O2A-CGA	-5.29	1.13	1.30
2	B	201	MNR	CHA-C4D	-5.04	1.31	1.39
2	B	201	MNR	C1D-C2D	-4.75	1.34	1.39
2	A	201	MNR	CHA-C4D	-4.62	1.32	1.39
2	B	201	MNR	C1B-C2B	-4.37	1.34	1.39
2	A	201	MNR	CAA-C2A	4.37	1.57	1.51
2	B	201	MNR	CHD-C4C	4.32	1.47	1.39
2	A	201	MNR	CBA-CAA	4.28	1.66	1.51
2	A	201	MNR	C1D-C2D	-4.14	1.34	1.39
2	B	201	MNR	CBA-CAA	4.09	1.66	1.51
2	B	201	MNR	O1D-CGD	-4.08	1.17	1.30
2	A	201	MNR	CHD-C4C	4.07	1.47	1.39
2	A	201	MNR	O1D-CGD	-3.91	1.17	1.30
2	B	201	MNR	CAA-C2A	3.87	1.57	1.51
2	A	201	MNR	C1B-C2B	-3.57	1.35	1.39
2	A	201	MNR	CHC-C4B	-3.55	1.33	1.39
2	A	201	MNR	CHA-C1A	3.46	1.46	1.39
2	B	201	MNR	C4A-NA	-3.45	1.31	1.37
2	A	201	MNR	CAD-CBD	-3.32	1.36	1.52
2	B	201	MNR	C3B-C4B	-3.32	1.38	1.41
2	A	201	MNR	C4A-NA	-3.31	1.31	1.37
2	B	201	MNR	CHA-C1A	3.26	1.45	1.39
2	A	201	MNR	C3B-C2B	3.13	1.44	1.40
2	A	201	MNR	O1A-CGA	3.00	1.31	1.22
2	A	201	MNR	CHD-C1D	-2.97	1.34	1.39
2	A	201	MNR	C3B-C4B	-2.85	1.38	1.41
2	A	201	MNR	CHB-C1B	-2.79	1.35	1.39
2	A	201	MNR	CBB-CAB	2.74	1.46	1.29
2	B	201	MNR	CAD-CBD	-2.69	1.39	1.52
3	B	202	NPO	O3-N1	-2.63	1.18	1.22
2	B	201	MNR	C4C-NC	2.47	1.41	1.37
2	B	201	MNR	CBB-CAB	2.45	1.44	1.29
3	B	202	NPO	OH-C4	2.24	1.42	1.37
2	A	201	MNR	C4C-NC	2.06	1.40	1.37
3	A	202	NPO	C6-C5	-2.02	1.35	1.38

All (45) bond angle outliers are listed below:

Mol	Chain	Res	Type	Atoms	Z	Observed(°)	Ideal(°)
2	A	201	MNR	CMA-C3A-C4A	8.23	139.53	124.73
2	B	201	MNR	CHB-C4A-NA	7.15	128.19	120.60
2	A	201	MNR	O2D-CGD-CBD	-6.56	102.30	123.09
2	B	201	MNR	CHA-C1A-NA	-6.47	113.73	120.60
2	B	201	MNR	CMA-C3A-C4A	6.13	135.76	124.73
2	A	201	MNR	CHB-C4A-NA	5.56	126.50	120.60
2	A	201	MNR	CHA-C1A-NA	-5.38	114.89	120.60
2	B	201	MNR	O2D-CGD-CBD	-5.35	106.12	123.09
2	A	201	MNR	C1A-CHA-C4D	5.33	135.15	116.07
2	B	201	MNR	C1A-CHA-C4D	5.24	134.81	116.07
2	A	201	MNR	CAD-C3D-C2D	5.03	141.70	127.25
2	B	201	MNR	C1C-CHC-C4B	4.97	133.84	116.07
2	A	201	MNR	C1C-CHC-C4B	4.78	133.19	116.07
2	A	201	MNR	C1C-C2C-C3C	-4.64	97.74	108.42
2	B	201	MNR	O1A-CGA-CBA	-4.30	109.47	123.09
3	A	202	NPO	C6-C1-N1	4.28	123.07	119.34
2	B	201	MNR	O1D-CGD-O2D	4.27	134.30	123.33
2	A	201	MNR	C4A-CHB-C1B	4.17	131.00	116.07
3	A	202	NPO	C2-C3-C4	4.11	124.22	119.88
6	B	206	SO4	O4-S-O2	-4.02	88.53	109.56
2	B	201	MNR	C1C-C2C-C3C	-3.88	99.48	108.42
2	B	201	MNR	CAD-C3D-C2D	3.87	138.37	127.25
2	A	201	MNR	CMC-C2C-C1C	3.86	131.68	124.73
3	A	202	NPO	O3-N1-C1	3.59	123.75	118.82
2	B	201	MNR	C4A-CHB-C1B	3.58	128.88	116.07
2	A	201	MNR	O1D-CGD-O2D	3.55	132.45	123.33
6	B	207	SO4	O4-S-O3	-3.33	90.20	108.54
3	A	202	NPO	C5-C6-C1	3.17	124.27	120.08
2	A	201	MNR	C2C-C1C-NC	3.16	119.41	110.46
6	B	206	SO4	O4-S-O1	-3.15	93.07	109.56
6	B	206	SO4	O2-S-O1	2.92	129.60	109.06
2	A	201	MNR	CHD-C4C-NC	2.66	123.42	120.60
6	B	207	SO4	O3-S-O1	-2.60	95.94	109.56
2	B	201	MNR	C1A-C2A-C3A	-2.60	103.12	113.37
2	B	201	MNR	C2C-C1C-NC	2.52	117.59	110.46
2	B	201	MNR	CMC-C2C-C1C	2.46	129.16	124.73
6	B	207	SO4	O4-S-O1	2.45	122.36	109.56
2	A	201	MNR	O1A-CGA-CBA	-2.44	115.35	123.09
2	B	201	MNR	CBC-CAC-C3C	-2.37	121.23	125.93
2	B	201	MNR	C4C-CHD-C1D	2.31	124.35	116.07
2	A	201	MNR	C1A-C2A-C3A	-2.21	104.63	113.37
2	A	201	MNR	C3A-C4A-NA	2.19	116.65	110.46
3	A	202	NPO	C3-C2-C1	-2.13	117.26	120.08

*Continued on next page...*

*Continued from previous page...*

Mol	Chain	Res	Type	Atoms	Z	Observed(°)	Ideal(°)
3	B	202	NPO	C2-C3-C4	2.05	122.05	119.88
3	B	202	NPO	C5-C4-C3	-2.04	116.52	119.77

There are no chirality outliers.

All (18) torsion outliers are listed below:

Mol	Chain	Res	Type	Atoms
2	A	201	MNR	C2D-C3D-CAD-CBD
2	A	201	MNR	C4D-C3D-CAD-CBD
5	A	206	PEG	O1-C1-C2-O2
5	A	210	PEG	O1-C1-C2-O2
5	A	210	PEG	O2-C3-C4-O4
5	A	210	PEG	C1-C2-O2-C3
5	A	209	PEG	O2-C3-C4-O4
5	A	209	PEG	C4-C3-O2-C2
5	A	206	PEG	C4-C3-O2-C2
5	B	205	PEG	O2-C3-C4-O4
2	B	201	MNR	C2D-C3D-CAD-CBD
2	B	201	MNR	C4D-C3D-CAD-CBD
5	A	210	PEG	C4-C3-O2-C2
2	B	201	MNR	CAD-CBD-CGD-O2D
2	A	201	MNR	CAD-CBD-CGD-O1D
2	B	201	MNR	CAA-CBA-CGA-O1A
2	A	201	MNR	CAA-CBA-CGA-O1A
5	A	206	PEG	C1-C2-O2-C3

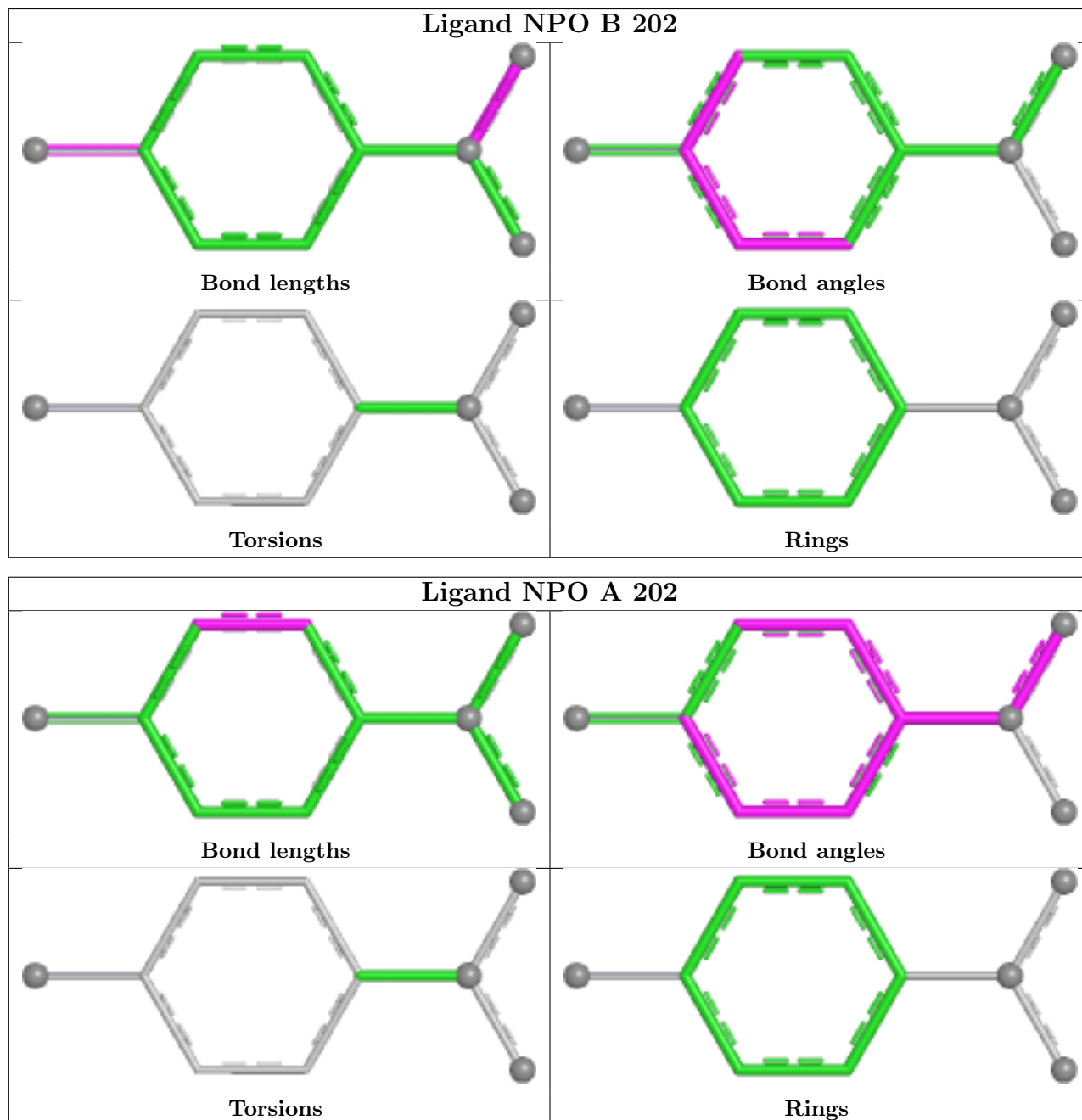
There are no ring outliers.

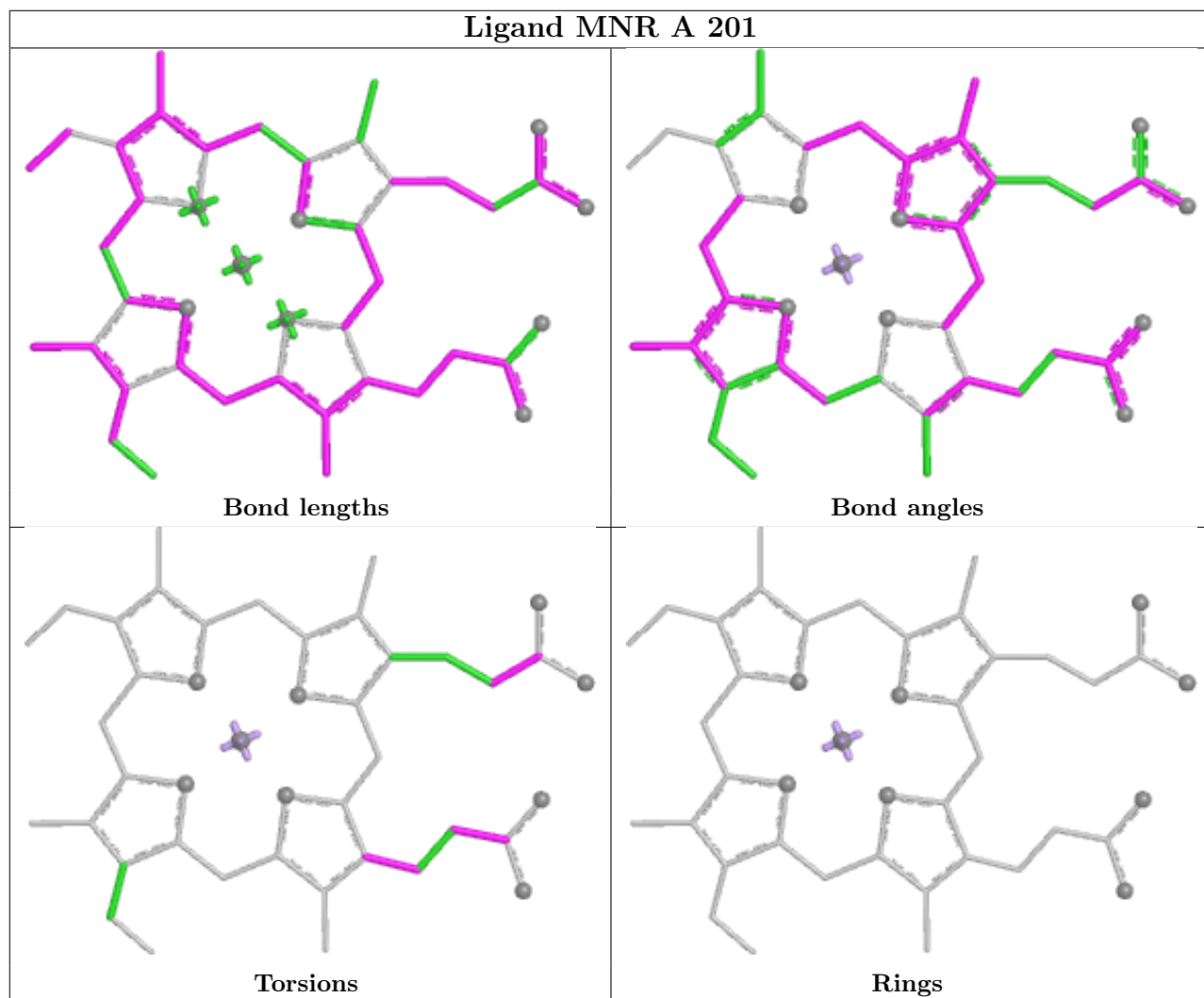
9 monomers are involved in 15 short contacts:

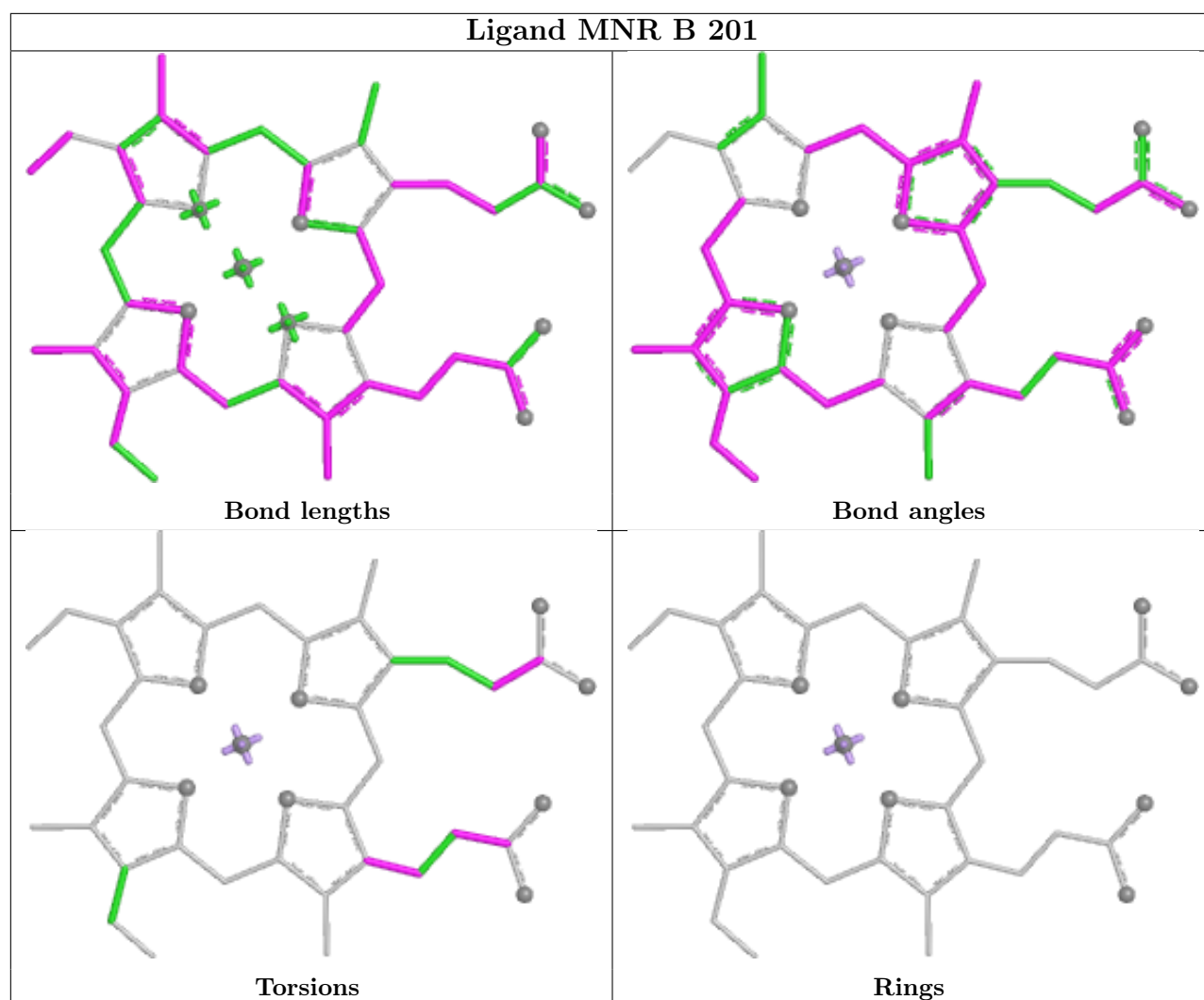
Mol	Chain	Res	Type	Clashes	Symm-Clashes
3	B	202	NPO	1	0
3	A	202	NPO	1	0
4	A	208	EDO	1	0
5	A	209	PEG	4	0
5	B	205	PEG	3	0
4	B	204	EDO	1	0
2	B	201	MNR	1	0
5	A	206	PEG	3	0
4	A	203	EDO	1	0

The following is a two-dimensional graphical depiction of Mogul quality analysis of bond lengths,

bond angles, torsion angles, and ring geometry for all instances of the Ligand of Interest. In addition, ligands with molecular weight > 250 and outliers as shown on the validation Tables will also be included. For torsion angles, if less than 5% of the Mogul distribution of torsion angles is within 10 degrees of the torsion angle in question, then that torsion angle is considered an outlier. Any bond that is central to one or more torsion angles identified as an outlier by Mogul will be highlighted in the graph. For rings, the root-mean-square deviation (RMSD) between the ring in question and similar rings identified by Mogul is calculated over all ring torsion angles. If the average RMSD is greater than 60 degrees and the minimal RMSD between the ring in question and any Mogul-identified rings is also greater than 60 degrees, then that ring is considered an outlier. The outliers are highlighted in purple. The color gray indicates Mogul did not find sufficient equivalents in the CSD to analyse the geometry.







## 5.7 Other polymers [i](#)

There are no such residues in this entry.

## 5.8 Polymer linkage issues [i](#)

There are no chain breaks in this entry.

## 6 Fit of model and data [i](#)

### 6.1 Protein, DNA and RNA chains [i](#)

In the following table, the column labelled ‘#RSRZ> 2’ contains the number (and percentage) of RSRZ outliers, followed by percent RSRZ outliers for the chain as percentile scores relative to all X-ray entries and entries of similar resolution. The OWAB column contains the minimum, median, 95<sup>th</sup> percentile and maximum values of the occupancy-weighted average B-factor per residue. The column labelled ‘Q< 0.9’ lists the number of (and percentage) of residues with an average occupancy less than 0.9.

Mol	Chain	Analysed	<RSRZ>	#RSRZ>2	OWAB(Å <sup>2</sup> )	Q<0.9
1	A	137/137 (100%)	-0.07	1 (0%) 84   87	8, 15, 25, 36	25 (18%)
1	B	137/137 (100%)	-0.07	2 (1%) 72   75	7, 15, 23, 33	28 (20%)
All	All	274/274 (100%)	-0.07	3 (1%) 78   81	7, 15, 24, 36	53 (19%)

All (3) RSRZ outliers are listed below:

Mol	Chain	Res	Type	RSRZ
1	B	33	ARG	2.7
1	A	91	GLY	2.5
1	B	37[A]	ASN	2.1

### 6.2 Non-standard residues in protein, DNA, RNA chains [i](#)

There are no non-standard protein/DNA/RNA residues in this entry.

### 6.3 Carbohydrates [i](#)

There are no oligosaccharides in this entry.

### 6.4 Ligands [i](#)

In the following table, the Atoms column lists the number of modelled atoms in the group and the number defined in the chemical component dictionary. The B-factors column lists the minimum, median, 95<sup>th</sup> percentile and maximum values of B factors of atoms in the group. The column labelled ‘Q< 0.9’ lists the number of atoms with occupancy less than 0.9.

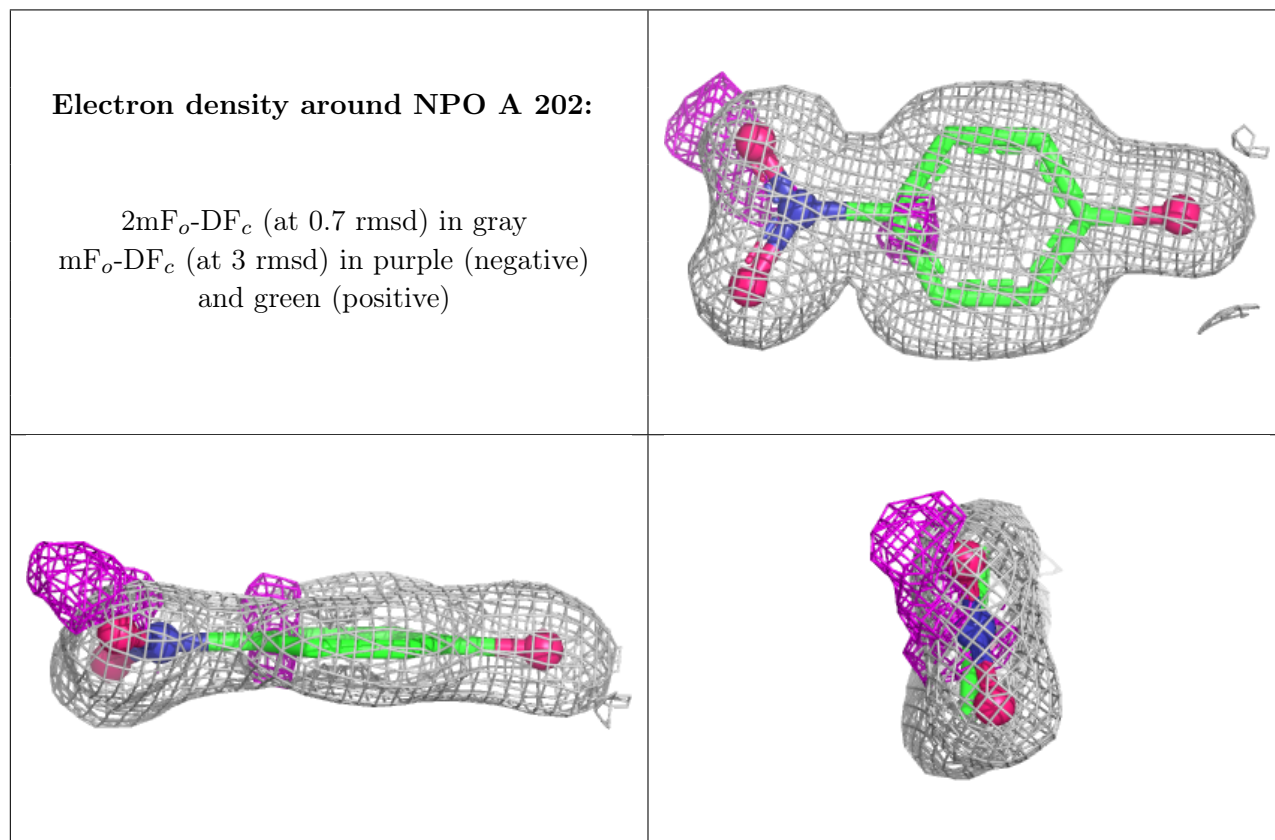
Mol	Type	Chain	Res	Atoms	RSCC	RSR	B-factors(Å <sup>2</sup> )	Q<0.9
5	PEG	B	205	7/7	0.66	0.21	29,35,47,50	0
5	PEG	A	209	7/7	0.67	0.18	37,39,43,56	0

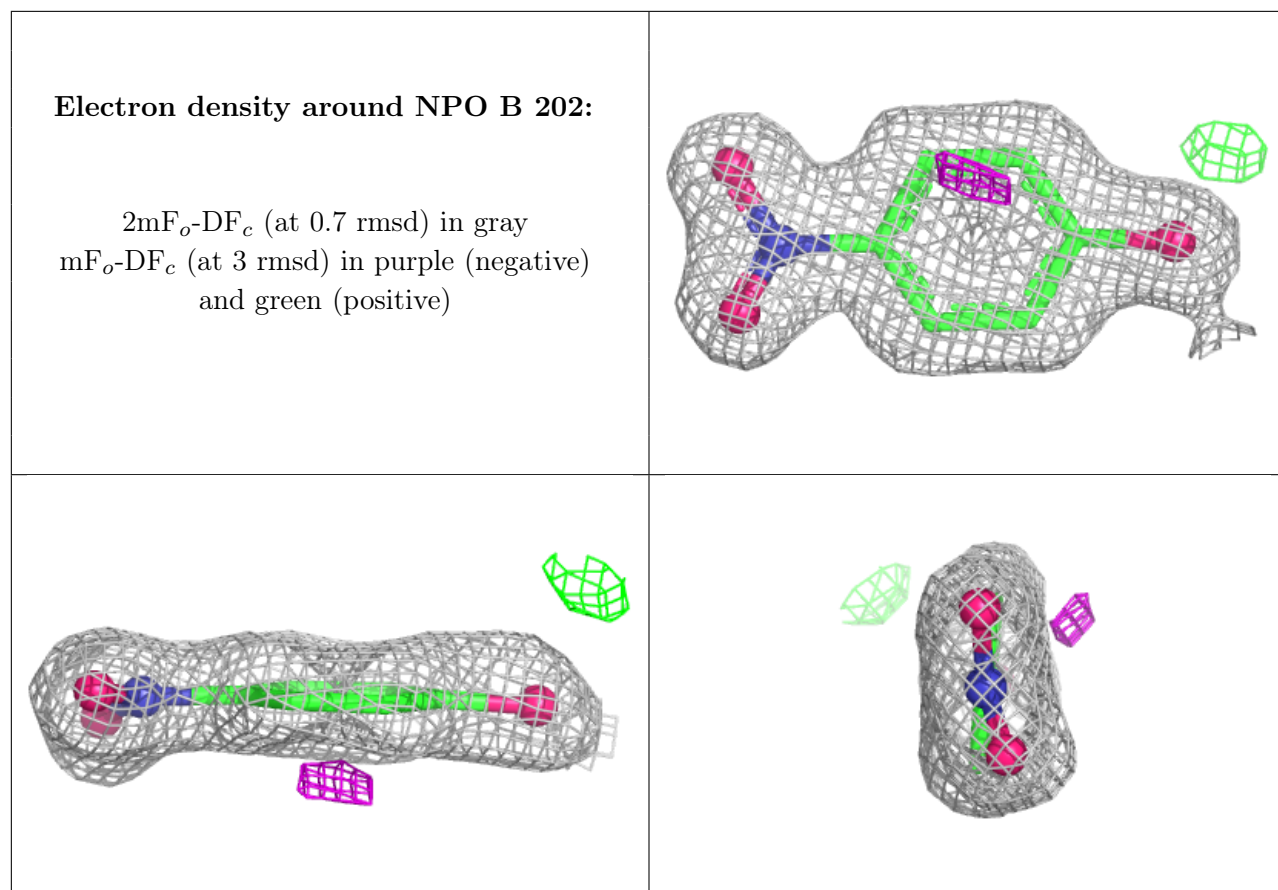
*Continued on next page...*

Continued from previous page...

Mol	Type	Chain	Res	Atoms	RSCC	RSR	B-factors( $\text{\AA}^2$ )	Q<0.9
4	EDO	A	208	4/4	0.78	0.16	26,26,38,47	0
4	EDO	A	207	4/4	0.79	0.15	25,29,30,32	0
5	PEG	A	206	7/7	0.83	0.12	29,37,46,51	0
5	PEG	A	210	7/7	0.85	0.15	25,34,42,45	0
4	EDO	B	204	4/4	0.87	0.12	22,37,38,41	0
4	EDO	A	204	4/4	0.89	0.11	24,29,33,42	0
3	NPO	A	202	10/10	0.91	0.09	16,19,23,24	0
4	EDO	A	203	4/4	0.94	0.13	18,20,21,22	0
4	EDO	A	205	4/4	0.96	0.06	16,17,18,22	0
3	NPO	B	202	10/10	0.96	0.06	17,18,22,23	0
4	EDO	B	203	4/4	0.97	0.06	14,15,16,16	0
2	MNR	B	201	43/43	0.98	0.06	12,14,25,27	0
2	MNR	A	201	43/43	0.98	0.07	12,16,26,39	0
6	SO4	B	206	5/5	0.98	0.06	17,17,22,29	0
6	SO4	B	207	5/5	0.98	0.06	16,19,23,34	0

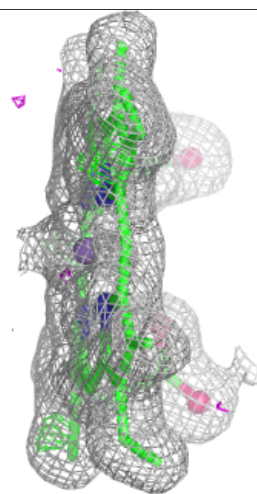
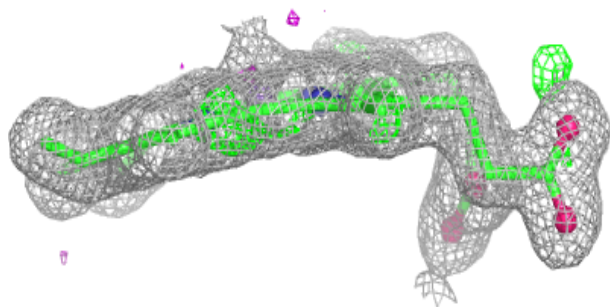
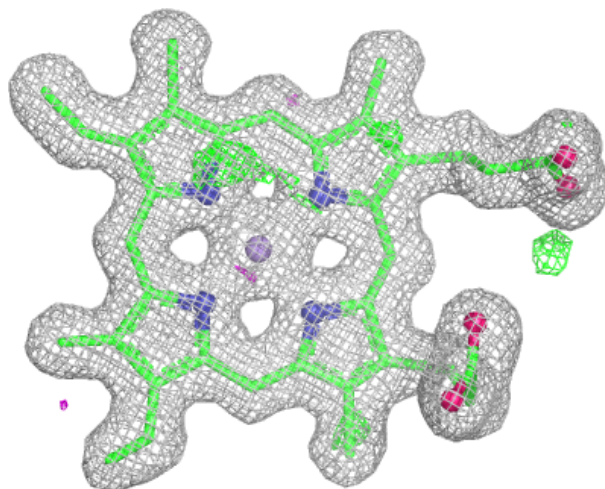
The following is a graphical depiction of the model fit to experimental electron density of all instances of the Ligand of Interest. In addition, ligands with molecular weight > 250 and outliers as shown on the geometry validation Tables will also be included. Each fit is shown from different orientation to approximate a three-dimensional view.

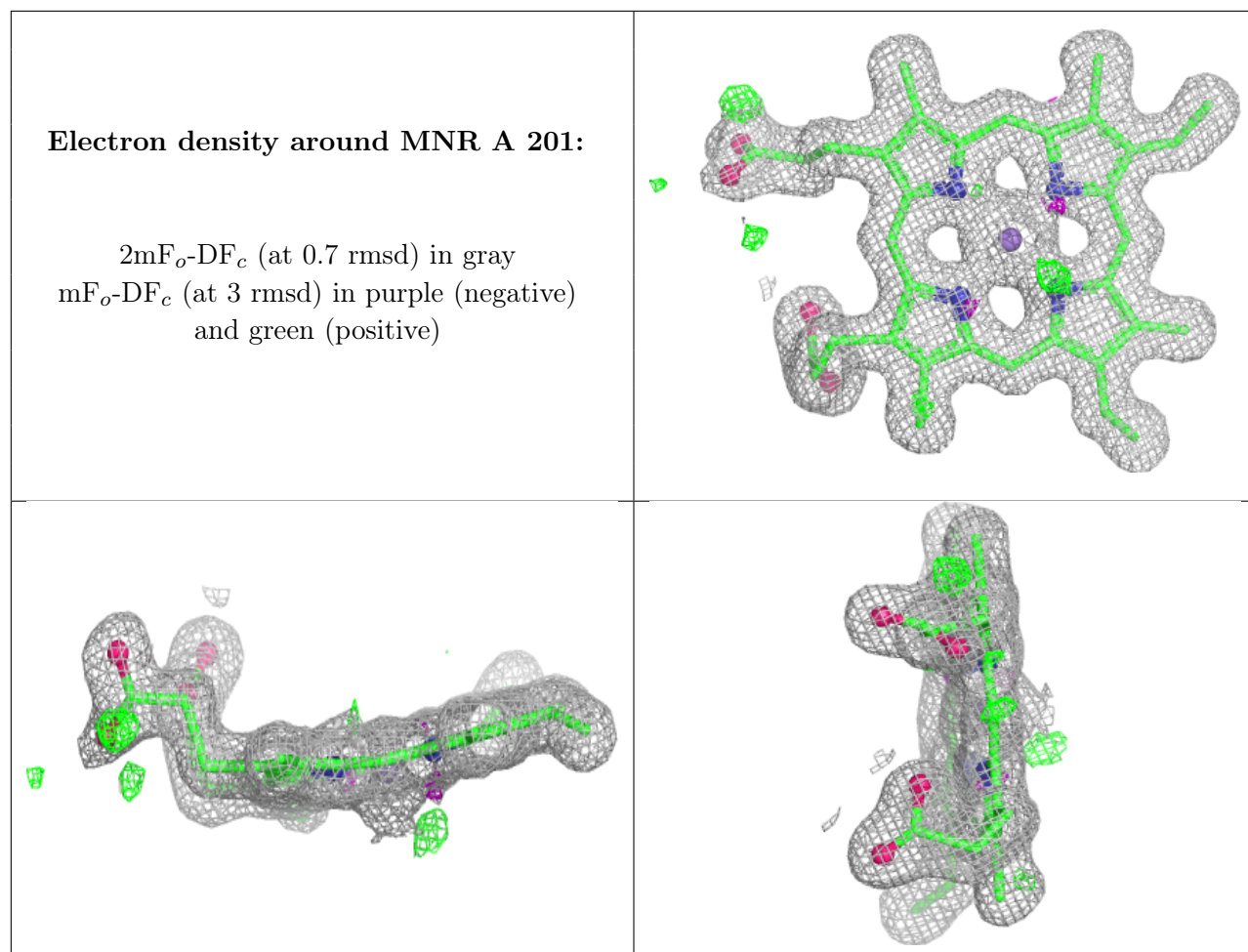




**Electron density around MNR B 201:**

$2mF_o-DF_c$  (at 0.7 rmsd) in gray  
 $mF_o-DF_c$  (at 3 rmsd) in purple (negative)  
and green (positive)





## 6.5 Other polymers [i](#)

There are no such residues in this entry.