



Full wwPDB X-ray Structure Validation Report ⓘ

Mar 9, 2026 – 03:41 AM UTC

PDB ID : 6V63 / pdb_00006v63
Title : SETD3 WT in Complex with an Actin Peptide with His73 Replaced with Glutamine
Authors : Dai, S.; Horton, J.R.; Cheng, X.
Deposited on : 2019-12-04
Resolution : 2.02 Å(reported)

This is a Full wwPDB X-ray Structure Validation Report for a publicly released PDB entry.

We welcome your comments at validation@mail.wwpdb.org

A user guide is available at

<https://www.wwpdb.org/validation/2017/XrayValidationReportHelp>

with specific help available everywhere you see the ⓘ symbol.

The types of validation reports are described at

<http://www.wwpdb.org/validation/2017/FAQs#types>.

The following versions of software and data (see [references ⓘ](#)) were used in the production of this report:

MolProbity : 4-5-2 with Phenix2.0
Mogul : 2022.3.0, CSD as543be (2022)
Xtrriage (Phenix) : 2.0
EDS : 3.0
Buster-report : wwPDB partial adaption of 1.1.7 (2018)
Percentile statistics : 20250101.v01 (using entries in the PDB archive January 1st 2025)
CCP4 : 9.0.010 (Gargrove)
Density-Fitness : 1.0.12
Ideal geometry (proteins) : Engh & Huber (2001)
Ideal geometry (DNA, RNA) : Parkinson et al. (1996)
Validation Pipeline (wwPDB-VP) : 2.49

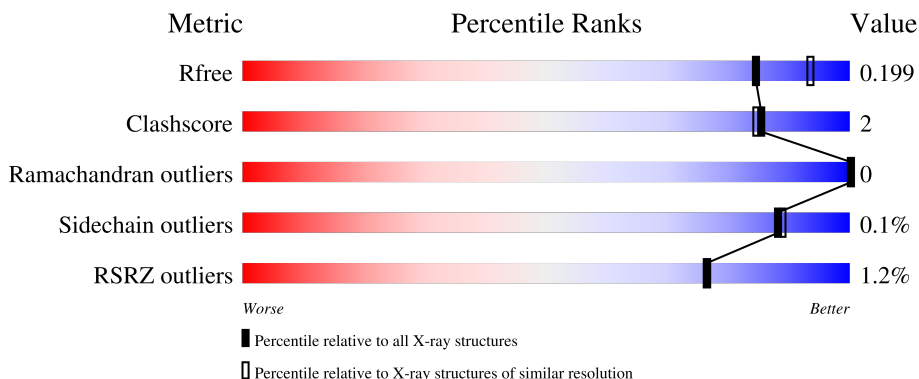
1 Overall quality at a glance

The following experimental techniques were used to determine the structure:

X-RAY DIFFRACTION

The reported resolution of this entry is 2.02 Å.

Percentile scores (ranging between 0-100) for global validation metrics of the entry are shown in the following graphic. The table shows the number of entries on which the scores are based.



Metric	Whole archive (#Entries)	Similar resolution (#Entries, resolution range(Å))
R_{free}	180053	13299 (2.04-2.00)
Clashscore	190562	1022 (2.02-2.02)
Ramachandran outliers	187476	1014 (2.02-2.02)
Sidechain outliers	187428	1014 (2.02-2.02)
RSRZ outliers	180081	13314 (2.04-2.00)

The table below summarises the geometric issues observed across the polymeric chains and their fit to the electron density. The red, orange, yellow and green segments of the lower bar indicate the fraction of residues that contain outliers for ≥ 3 , 2, 1 and 0 types of geometric quality criteria respectively. A grey segment represents the fraction of residues that are not modelled. The numeric value for each fraction is indicated below the corresponding segment, with a dot representing fractions $\leq 5\%$. The upper red bar (where present) indicates the fraction of residues that have poor fit to the electron density. The numeric value is given above the bar.

Mol	Chain	Length	Quality of chain
1	Y	23	 4% 78% 17%
1	Z	23	 9% 70% 13% 17%
2	A	596	 % 78% 19%
2	B	596	 % 75% 6% 19%

2 Entry composition [i](#)

There are 7 unique types of molecules in this entry. The entry contains 8985 atoms, of which 0 are hydrogens and 0 are deuteriums.

In the tables below, the ZeroOcc column contains the number of atoms modelled with zero occupancy, the AltConf column contains the number of residues with at least one atom in alternate conformation and the Trace column contains the number of residues modelled with at most 2 atoms.

- Molecule 1 is a protein called Actin, cytoplasmic 1.

Mol	Chain	Residues	Atoms					ZeroOcc	AltConf	Trace
			Total	C	N	O	S			
1	Y	19	149	96	23	29	1	0	0	0
1	Z	19	149	96	23	29	1	0	0	0

There are 2 discrepancies between the modelled and reference sequences:

Chain	Residue	Modelled	Actual	Comment	Reference
Y	73	GLN	HIS	engineered mutation	UNP C9JUM1
Z	73	GLN	HIS	engineered mutation	UNP C9JUM1

- Molecule 2 is a protein called Actin-histidine N-methyltransferase.

Mol	Chain	Residues	Atoms					ZeroOcc	AltConf	Trace
			Total	C	N	O	S			
2	A	484	3911	2504	656	734	17	0	6	0
2	B	483	3896	2495	655	728	18	0	4	0

There are 4 discrepancies between the modelled and reference sequences:

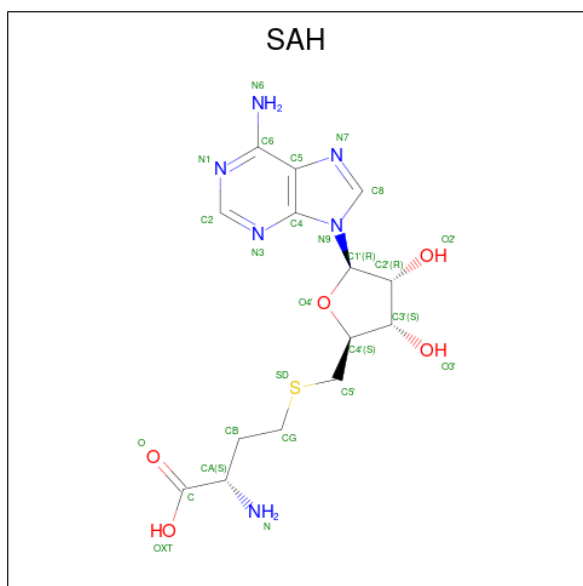
Chain	Residue	Modelled	Actual	Comment	Reference
A	-2	GLY	-	expression tag	UNP Q86TU7
A	-1	SER	-	expression tag	UNP Q86TU7
B	-2	GLY	-	expression tag	UNP Q86TU7
B	-1	SER	-	expression tag	UNP Q86TU7

- Molecule 3 is GLYCEROL (CCD ID: GOL) (formula: C₃H₈O₃).



Mol	Chain	Residues	Atoms			ZeroOcc	AltConf
3	Y	1	Total	C	O	0	0
			6	3	3		
3	A	1	Total	C	O	0	0
			6	3	3		

- Molecule 4 is S-ADENOSYL-L-HOMOCYSTEINE (CCD ID: SAH) (formula: $C_{14}H_{20}N_6O_5S$).



Mol	Chain	Residues	Atoms					ZeroOcc	AltConf
4	A	1	Total	C	N	O	S	0	0
			26	14	6	5	1		
4	B	1	Total	C	N	O	S	0	0
			26	14	6	5	1		

- Molecule 5 is 1,2-ETHANEDIOL (CCD ID: EDO) (formula: C₂H₆O₂).



Mol	Chain	Residues	Atoms	ZeroOcc	AltConf
5	A	1	Total C O 4 2 2	0	0
5	A	1	Total C O 4 2 2	0	0
5	A	1	Total C O 4 2 2	0	0
5	A	1	Total C O 4 2 2	0	0
5	A	1	Total C O 4 2 2	0	0
5	A	1	Total C O 4 2 2	0	0
5	A	1	Total C O 4 2 2	0	0
5	A	1	Total C O 4 2 2	0	0
5	A	1	Total C O 4 2 2	0	0
5	A	1	Total C O 4 2 2	0	0
5	A	1	Total C O 4 2 2	0	0
5	A	1	Total C O 4 2 2	0	0
5	A	1	Total C O 4 2 2	0	0
5	A	1	Total C O 4 2 2	0	0

Continued on next page...

Continued from previous page...

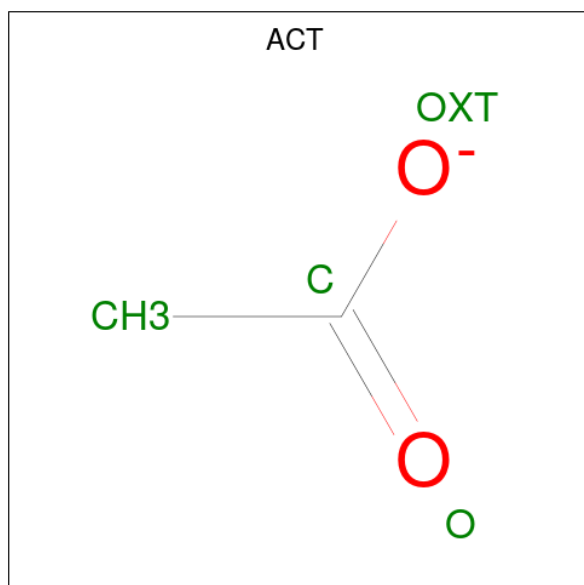
Mol	Chain	Residues	Atoms			ZeroOcc	AltConf
5	A	1	Total 4	C 2	O 2	0	0
5	A	1	Total 4	C 2	O 2	0	0
5	A	1	Total 4	C 2	O 2	0	0
5	A	1	Total 4	C 2	O 2	0	0
5	A	1	Total 4	C 2	O 2	0	0
5	A	1	Total 4	C 2	O 2	0	0
5	A	1	Total 4	C 2	O 2	0	0
5	Z	1	Total 4	C 2	O 2	0	0
5	B	1	Total 4	C 2	O 2	0	0
5	B	1	Total 4	C 2	O 2	0	0
5	B	1	Total 4	C 2	O 2	0	0
5	B	1	Total 4	C 2	O 2	0	0
5	B	1	Total 4	C 2	O 2	0	0
5	B	1	Total 4	C 2	O 2	0	0
5	B	1	Total 4	C 2	O 2	0	0
5	B	1	Total 4	C 2	O 2	0	0
5	B	1	Total 4	C 2	O 2	0	0
5	B	1	Total 4	C 2	O 2	0	0
5	B	1	Total 4	C 2	O 2	0	0
5	B	1	Total 4	C 2	O 2	0	0
5	B	1	Total 4	C 2	O 2	0	0
5	B	1	Total 4	C 2	O 2	0	0

Continued on next page...

Continued from previous page...

Mol	Chain	Residues	Atoms			ZeroOcc	AltConf
5	B	1	Total	C	O	0	0
			4	2	2		
5	B	1	Total	C	O	0	0
			4	2	2		

- Molecule 6 is ACETATE ION (CCD ID: ACT) (formula: C₂H₃O₂).



Mol	Chain	Residues	Atoms			ZeroOcc	AltConf
6	A	1	Total	C	O	0	0
			4	2	2		

- Molecule 7 is water.

Mol	Chain	Residues	Atoms		ZeroOcc	AltConf
7	Y	12	Total	O	0	0
			12	12		
7	A	330	Total	O	0	1
			331	331		
7	Z	12	Total	O	0	0
			12	12		
7	B	313	Total	O	0	0
			313	313		

GLY VAL GLN ASP ALA LEU ASN ILE ARG GLU ALA ILE SER LYS ALA LYS ALA THR GLU ASN GLY LEU VAL ASN GLY GLU ASN SER SER ILE PRO GLY THR ARG SER SER GLU ASN GLU SER SER ASN GLN GLU SER LYS ARG ALA VAL GLU ASP ALA LYS GLY SER SER SER ASP SER THR ALA

GLY
VAL
LYS
GLU

4 Data and refinement statistics

Property	Value	Source
Space group	P 1 21 1	Depositor
Cell constants a, b, c, α , β , γ	60.34Å 175.79Å 66.81Å 90.00° 92.37° 90.00°	Depositor
Resolution (Å)	36.71 – 2.02 36.71 – 2.02	Depositor EDS
% Data completeness (in resolution range)	92.9 (36.71-2.02) 93.1 (36.71-2.02)	Depositor EDS
R_{merge}	(Not available)	Depositor
R_{sym}	(Not available)	Depositor
$\langle I/\sigma(I) \rangle$ ¹	1.39 (at 2.01Å)	Xtrriage
Refinement program	PHENIX (1.15.2_3472)	Depositor
R, R_{free}	0.166 , 0.199 0.167 , 0.199	Depositor DCC
R_{free} test set	2009 reflections (2.21%)	wwPDB-VP
Wilson B-factor (Å ²)	23.2	Xtrriage
Anisotropy	0.712	Xtrriage
Bulk solvent k_{sol} (e/Å ³), B_{sol} (Å ²)	0.35 , 45.5	EDS
L-test for twinning ²	$\langle L \rangle = 0.49$, $\langle L^2 \rangle = 0.32$	Xtrriage
Estimated twinning fraction	0.039 for h,-k,-l	Xtrriage
F_o, F_c correlation	0.96	EDS
Total number of atoms	8985	wwPDB-VP
Average B, all atoms (Å ²)	27.0	wwPDB-VP

Xtrriage's analysis on translational NCS is as follows: *The largest off-origin peak in the Patterson function is 4.23% of the height of the origin peak. No significant pseudotranslation is detected.*

¹Intensities estimated from amplitudes.

²Theoretical values of $\langle |L| \rangle$, $\langle L^2 \rangle$ for acentric reflections are 0.5, 0.333 respectively for untwinned datasets, and 0.375, 0.2 for perfectly twinned datasets.

5 Model quality [i](#)

5.1 Standard geometry [i](#)

Bond lengths and bond angles in the following residue types are not validated in this section: SAH, EDO, GOL, ACT

The Z score for a bond length (or angle) is the number of standard deviations the observed value is removed from the expected value. A bond length (or angle) with $|Z| > 5$ is considered an outlier worth inspection. RMSZ is the root-mean-square of all Z scores of the bond lengths (or angles).

Mol	Chain	Bond lengths		Bond angles	
		RMSZ	# Z >5	RMSZ	# Z >5
1	Y	0.17	0/152	0.27	0/207
1	Z	0.17	0/152	0.26	0/207
2	A	0.20	0/4012	0.38	0/5436
2	B	0.20	1/3994 (0.0%)	0.37	0/5413
All	All	0.20	1/8310 (0.0%)	0.37	0/11263

All (1) bond length outliers are listed below:

Mol	Chain	Res	Type	Atoms	Z	Observed(Å)	Ideal(Å)
2	B	149	GLN	C-O	-5.91	1.16	1.24

There are no bond angle outliers.

There are no chirality outliers.

There are no planarity outliers.

5.2 Too-close contacts [i](#)

In the following table, the Non-H and H(model) columns list the number of non-hydrogen atoms and hydrogen atoms in the chain respectively. The H(added) column lists the number of hydrogen atoms added and optimized by MolProbity. The Clashes column lists the number of clashes within the asymmetric unit, whereas Symm-Clashes lists symmetry-related clashes.

Mol	Chain	Non-H	H(model)	H(added)	Clashes	Symm-Clashes
1	Y	149	0	133	1	0
1	Z	149	0	133	2	0
2	A	3911	0	3825	16	0
2	B	3896	0	3808	24	0
3	A	6	0	8	0	0
3	Y	6	0	8	0	0

Continued on next page...

Continued from previous page...

Mol	Chain	Non-H	H(model)	H(added)	Clashes	Symm-Clashes
4	A	26	0	19	0	0
4	B	26	0	19	0	0
5	A	80	0	120	4	0
5	B	60	0	90	7	0
5	Z	4	0	6	0	0
6	A	4	0	3	0	0
7	A	331	0	0	0	0
7	B	313	0	0	0	0
7	Y	12	0	0	0	0
7	Z	12	0	0	0	0
All	All	8985	0	8172	36	0

The all-atom clashscore is defined as the number of clashes found per 1000 atoms (including hydrogen atoms). The all-atom clashscore for this structure is 2.

All (36) close contacts within the same asymmetric unit are listed below, sorted by their clash magnitude.

Atom-1	Atom-2	Interatomic distance (Å)	Clash overlap (Å)
2:A:181:GLU:OE2	2:B:73:LYS:HE3	1.88	0.74
2:B:351:MET:HE1	2:B:391:GLU:HG3	1.70	0.73
2:A:181:GLU:OE2	2:B:73:LYS:NZ	2.25	0.69
2:A:181:GLU:OE2	2:B:73:LYS:CE	2.43	0.67
2:B:293:ARG:HH22	5:B:1012:EDO:H12	1.61	0.66
2:A:484:ASN:HD21	5:A:622:EDO:H21	1.64	0.61
2:B:359:ALA:HB1	5:B:1002:EDO:H11	1.82	0.61
2:A:351:MET:HE1	2:A:395:LYS:HG3	1.85	0.57
2:A:337:LYS:HG3	5:A:608:EDO:H21	1.87	0.57
2:B:389:MET:HE2	2:B:417:VAL:HG21	1.87	0.57
2:B:197:GLN:HA	5:B:1014:EDO:H11	1.88	0.55
2:A:389:MET:HE2	2:A:417:VAL:HG21	1.94	0.50
2:B:75:GLU:HA	2:B:78:PHE:CD2	2.48	0.49
2:B:88:ASN:HB2	2:B:126:LEU:HD21	1.95	0.48
2:B:370:HIS:NE2	5:B:1009:EDO:H11	2.29	0.48
1:Y:73:GLN:HG2	2:A:273:TRP:CH2	2.48	0.47
1:Z:73:GLN:HG2	2:B:273:TRP:CH2	2.51	0.46
2:A:35:CYS:HB3	2:A:214:ARG:HB2	1.97	0.45
2:A:68:VAL:HG21	2:A:165:ALA:HA	1.99	0.45
2:B:367:PHE:HA	5:B:1015:EDO:H11	1.98	0.44
2:A:101:LYS:HE3	2:B:101:LYS:HG3	2.00	0.44
2:A:466:LEU:HD12	5:A:603:EDO:H21	2.00	0.43
2:B:169:SER:HB3	2:B:172:GLN:HG2	2.00	0.43

Continued on next page...

Continued from previous page...

Atom-1	Atom-2	Interatomic distance (Å)	Clash overlap (Å)
2:B:371:PHE:HB2	2:B:473:ILE:HG12	1.99	0.43
2:B:333:HIS:HB3	5:B:1009:EDO:H12	2.01	0.43
2:A:238:PHE:HB3	5:A:617:EDO:H11	2.01	0.42
2:B:68:VAL:HG21	2:B:165:ALA:HA	2.01	0.42
2:B:161:LEU:HG	2:B:246:ALA:HB2	2.02	0.42
2:B:248:SER:HA	2:B:251:MET:HG2	2.02	0.42
2:A:88:ASN:HB2	2:A:126:LEU:HD21	2.03	0.40
2:B:198:SER:H	5:B:1014:EDO:H11	1.85	0.40
2:A:385:ARG:O	2:A:389:MET:HG3	2.21	0.40
2:A:303:ARG:HH22	2:B:453:ASN:HB3	1.87	0.40
2:B:185:PRO:HA	2:B:188:PHE:CD1	2.56	0.40
1:Z:68:LYS:HD2	1:Z:69:TYR:CE2	2.56	0.40
2:B:91:SER:HB3	2:B:121:TRP:CE2	2.56	0.40

There are no symmetry-related clashes.

5.3 Torsion angles [i](#)

5.3.1 Protein backbone [i](#)

In the following table, the Percentiles column shows the percent Ramachandran outliers of the chain as a percentile score with respect to all X-ray entries followed by that with respect to entries of similar resolution.

The Analysed column shows the number of residues for which the backbone conformation was analysed, and the total number of residues.

Mol	Chain	Analysed	Favoured	Allowed	Outliers	Percentiles	
1	Y	17/23 (74%)	17 (100%)	0	0	100	100
1	Z	17/23 (74%)	17 (100%)	0	0	100	100
2	A	488/596 (82%)	481 (99%)	7 (1%)	0	100	100
2	B	485/596 (81%)	481 (99%)	4 (1%)	0	100	100
All	All	1007/1238 (81%)	996 (99%)	11 (1%)	0	100	100

There are no Ramachandran outliers to report.

5.3.2 Protein sidechains [i](#)

In the following table, the Percentiles column shows the percent sidechain outliers of the chain as a percentile score with respect to all X-ray entries followed by that with respect to entries of similar resolution.

The Analysed column shows the number of residues for which the sidechain conformation was analysed, and the total number of residues.

Mol	Chain	Analysed	Rotameric	Outliers	Percentiles	
1	Y	15/22 (68%)	15 (100%)	0	100	100
1	Z	15/22 (68%)	15 (100%)	0	100	100
2	A	421/519 (81%)	420 (100%)	1 (0%)	87	88
2	B	418/519 (80%)	418 (100%)	0	100	100
All	All	869/1082 (80%)	868 (100%)	1 (0%)	88	89

All (1) residues with a non-rotameric sidechain are listed below:

Mol	Chain	Res	Type
2	A	280	ASN

Sometimes sidechains can be flipped to improve hydrogen bonding and reduce clashes. All (6) such sidechains are listed below:

Mol	Chain	Res	Type
2	A	230	ASN
2	A	421	ASN
2	A	484	ASN
2	B	323	HIS
2	B	453	ASN
2	B	454	HIS

5.3.3 RNA [i](#)

There are no RNA molecules in this entry.

5.4 Non-standard residues in protein, DNA, RNA chains [i](#)

There are no non-standard protein/DNA/RNA residues in this entry.

5.5 Carbohydrates [i](#)

There are no oligosaccharides in this entry.

5.6 Ligand geometry [i](#)

41 ligands are modelled in this entry.

In the following table, the Counts columns list the number of bonds (or angles) for which Mogul statistics could be retrieved, the number of bonds (or angles) that are observed in the model and the number of bonds (or angles) that are defined in the Chemical Component Dictionary. The Link column lists molecule types, if any, to which the group is linked. The Z score for a bond length (or angle) is the number of standard deviations the observed value is removed from the expected value. A bond length (or angle) with $|Z| > 2$ is considered an outlier worth inspection. RMSZ is the root-mean-square of all Z scores of the bond lengths (or angles).

Mol	Type	Chain	Res	Link	Bond lengths			Bond angles		
					Counts	RMSZ	# Z > 2	Counts	RMSZ	# Z > 2
5	EDO	B	1002	-	3,3,3	0.45	0	2,2,2	0.30	0
5	EDO	B	1004	-	3,3,3	0.45	0	2,2,2	0.47	0
4	SAH	A	601	-	27,28,28	1.02	3 (11%)	36,40,40	1.93	9 (25%)
5	EDO	A	608	-	3,3,3	0.38	0	2,2,2	0.63	0
5	EDO	A	613	-	3,3,3	0.41	0	2,2,2	0.46	0
3	GOL	A	602	-	5,5,5	0.96	0	5,5,5	1.03	0
5	EDO	A	622	-	3,3,3	0.43	0	2,2,2	0.38	0
5	EDO	B	1006	-	3,3,3	0.40	0	2,2,2	0.45	0
5	EDO	B	1013	-	3,3,3	0.50	0	2,2,2	0.27	0
6	ACT	A	621	-	3,3,3	1.43	1 (33%)	3,3,3	1.49	0
5	EDO	A	606	-	3,3,3	0.43	0	2,2,2	0.43	0
5	EDO	A	618	-	3,3,3	0.40	0	2,2,2	0.50	0
5	EDO	B	1011	-	3,3,3	0.43	0	2,2,2	0.45	0
3	GOL	Y	101	-	5,5,5	1.08	0	5,5,5	0.91	0
5	EDO	A	611	-	3,3,3	0.42	0	2,2,2	0.39	0
5	EDO	B	1003	-	3,3,3	0.41	0	2,2,2	0.51	0
5	EDO	B	1010	-	3,3,3	0.40	0	2,2,2	0.44	0
5	EDO	A	610	-	3,3,3	0.47	0	2,2,2	0.35	0
4	SAH	B	1001	-	27,28,28	1.03	4 (14%)	36,40,40	1.95	9 (25%)
5	EDO	A	616	-	3,3,3	0.48	0	2,2,2	0.29	0
5	EDO	A	609	-	3,3,3	0.40	0	2,2,2	0.43	0
5	EDO	B	1014	-	3,3,3	0.39	0	2,2,2	0.53	0
5	EDO	A	604	-	3,3,3	0.45	0	2,2,2	0.39	0
5	EDO	A	614	-	3,3,3	0.44	0	2,2,2	0.25	0
5	EDO	Z	101	-	3,3,3	0.42	0	2,2,2	0.39	0
5	EDO	A	612	-	3,3,3	0.43	0	2,2,2	0.39	0
5	EDO	A	620	-	3,3,3	0.43	0	2,2,2	0.24	0

Mol	Type	Chain	Res	Link	Bond lengths			Bond angles		
					Counts	RMSZ	# Z > 2	Counts	RMSZ	# Z > 2
5	EDO	A	615	-	3,3,3	0.42	0	2,2,2	0.51	0
5	EDO	A	603	-	3,3,3	0.38	0	2,2,2	0.72	0
5	EDO	B	1015	-	3,3,3	0.42	0	2,2,2	0.44	0
5	EDO	B	1016	-	3,3,3	0.48	0	2,2,2	0.25	0
5	EDO	B	1007	-	3,3,3	0.45	0	2,2,2	0.41	0
5	EDO	A	623	-	3,3,3	0.46	0	2,2,2	0.36	0
5	EDO	A	605	-	3,3,3	0.35	0	2,2,2	0.56	0
5	EDO	A	619	-	3,3,3	0.47	0	2,2,2	0.32	0
5	EDO	A	617	-	3,3,3	0.47	0	2,2,2	0.20	0
5	EDO	B	1008	-	3,3,3	0.42	0	2,2,2	0.53	0
5	EDO	B	1009	-	3,3,3	0.44	0	2,2,2	0.37	0
5	EDO	B	1005	-	3,3,3	0.44	0	2,2,2	0.38	0
5	EDO	B	1012	-	3,3,3	0.42	0	2,2,2	0.41	0
5	EDO	A	607	-	3,3,3	0.47	0	2,2,2	0.28	0

In the following table, the Chirals column lists the number of chiral outliers, the number of chiral centers analysed, the number of these observed in the model and the number defined in the Chemical Component Dictionary. Similar counts are reported in the Torsion and Rings columns. '-' means no outliers of that kind were identified.

Mol	Type	Chain	Res	Link	Chirals	Torsions	Rings
5	EDO	B	1002	-	-	0/1/1/1	-
5	EDO	B	1004	-	-	0/1/1/1	-
4	SAH	A	601	-	-	2/15/31/31	0/3/3/3
5	EDO	A	608	-	-	0/1/1/1	-
5	EDO	A	613	-	-	0/1/1/1	-
3	GOL	A	602	-	-	0/4/4/4	-
5	EDO	A	622	-	-	0/1/1/1	-
5	EDO	B	1006	-	-	0/1/1/1	-
5	EDO	B	1013	-	-	0/1/1/1	-
5	EDO	A	606	-	-	0/1/1/1	-
5	EDO	A	618	-	-	0/1/1/1	-
5	EDO	B	1011	-	-	1/1/1/1	-
3	GOL	Y	101	-	-	2/4/4/4	-
5	EDO	A	611	-	-	0/1/1/1	-
5	EDO	B	1003	-	-	0/1/1/1	-
5	EDO	B	1010	-	-	0/1/1/1	-
5	EDO	A	610	-	-	1/1/1/1	-
4	SAH	B	1001	-	-	2/15/31/31	0/3/3/3
5	EDO	A	616	-	-	0/1/1/1	-
5	EDO	A	609	-	-	0/1/1/1	-
5	EDO	B	1014	-	-	0/1/1/1	-

Continued on next page...

Continued from previous page...

Mol	Type	Chain	Res	Link	Chirals	Torsions	Rings
5	EDO	A	604	-	-	0/1/1/1	-
5	EDO	A	614	-	-	0/1/1/1	-
5	EDO	Z	101	-	-	1/1/1/1	-
5	EDO	A	612	-	-	0/1/1/1	-
5	EDO	A	620	-	-	0/1/1/1	-
5	EDO	A	615	-	-	0/1/1/1	-
5	EDO	A	603	-	-	1/1/1/1	-
5	EDO	B	1015	-	-	0/1/1/1	-
5	EDO	B	1016	-	-	1/1/1/1	-
5	EDO	B	1007	-	-	0/1/1/1	-
5	EDO	A	623	-	-	0/1/1/1	-
5	EDO	A	605	-	-	0/1/1/1	-
5	EDO	A	619	-	-	0/1/1/1	-
5	EDO	A	617	-	-	0/1/1/1	-
5	EDO	B	1008	-	-	0/1/1/1	-
5	EDO	B	1009	-	-	0/1/1/1	-
5	EDO	B	1005	-	-	0/1/1/1	-
5	EDO	B	1012	-	-	0/1/1/1	-
5	EDO	A	607	-	-	0/1/1/1	-

All (8) bond length outliers are listed below:

Mol	Chain	Res	Type	Atoms	Z	Observed(Å)	Ideal(Å)
4	B	1001	SAH	C2-N1	2.30	1.38	1.33
4	A	601	SAH	C2-N1	2.29	1.38	1.33
4	A	601	SAH	C2-N3	2.27	1.38	1.33
4	B	1001	SAH	C2-N3	2.23	1.37	1.33
4	B	1001	SAH	C8-N7	2.15	1.35	1.31
4	A	601	SAH	C8-N7	2.15	1.35	1.31
4	B	1001	SAH	OXT-C	-2.11	1.23	1.30
6	A	621	ACT	CH3-C	2.05	1.57	1.49

All (18) bond angle outliers are listed below:

Mol	Chain	Res	Type	Atoms	Z	Observed(°)	Ideal(°)
4	B	1001	SAH	N3-C2-N1	-5.66	120.02	128.58
4	A	601	SAH	N3-C2-N1	-5.60	120.10	128.58
4	B	1001	SAH	C5-C4-N3	-4.48	120.55	126.72
4	A	601	SAH	C5-C4-N3	-4.32	120.77	126.72
4	A	601	SAH	N9-C8-N7	-3.84	108.48	113.94
4	B	1001	SAH	N9-C8-N7	-3.79	108.55	113.94
4	B	1001	SAH	C2-N3-C4	3.49	120.36	111.83

Continued on next page...

Continued from previous page...

Mol	Chain	Res	Type	Atoms	Z	Observed(°)	Ideal(°)
4	A	601	SAH	C2-N3-C4	3.47	120.31	111.83
4	A	601	SAH	C5-N7-C8	3.35	108.71	103.45
4	B	1001	SAH	C5-N7-C8	3.31	108.65	103.45
4	B	1001	SAH	C5'-SD-CG	-2.74	94.14	102.26
4	B	1001	SAH	N3-C4-N9	2.70	131.75	127.17
4	B	1001	SAH	OXT-C-O	-2.67	118.02	124.08
4	A	601	SAH	N3-C4-N9	2.62	131.63	127.17
4	A	601	SAH	C4-C5-N7	-2.58	107.63	110.58
4	B	1001	SAH	C4-C5-N7	-2.48	107.75	110.58
4	A	601	SAH	OXT-C-O	-2.36	118.73	124.08
4	A	601	SAH	C5'-SD-CG	-2.10	96.04	102.26

There are no chirality outliers.

All (11) torsion outliers are listed below:

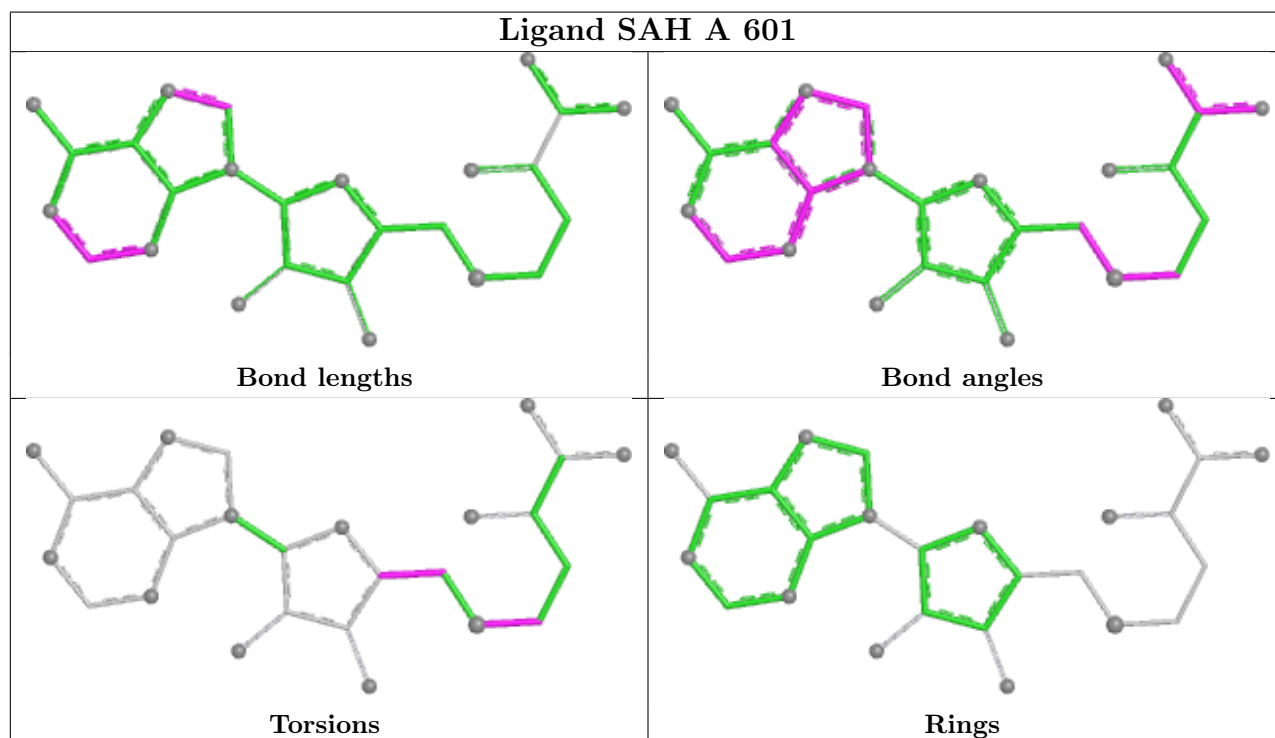
Mol	Chain	Res	Type	Atoms
5	A	610	EDO	O1-C1-C2-O2
4	A	601	SAH	C3'-C4'-C5'-SD
4	B	1001	SAH	C3'-C4'-C5'-SD
3	Y	101	GOL	C1-C2-C3-O3
4	A	601	SAH	CB-CG-SD-C5'
4	B	1001	SAH	CB-CG-SD-C5'
3	Y	101	GOL	O2-C2-C3-O3
5	A	603	EDO	O1-C1-C2-O2
5	B	1011	EDO	O1-C1-C2-O2
5	Z	101	EDO	O1-C1-C2-O2
5	B	1016	EDO	O1-C1-C2-O2

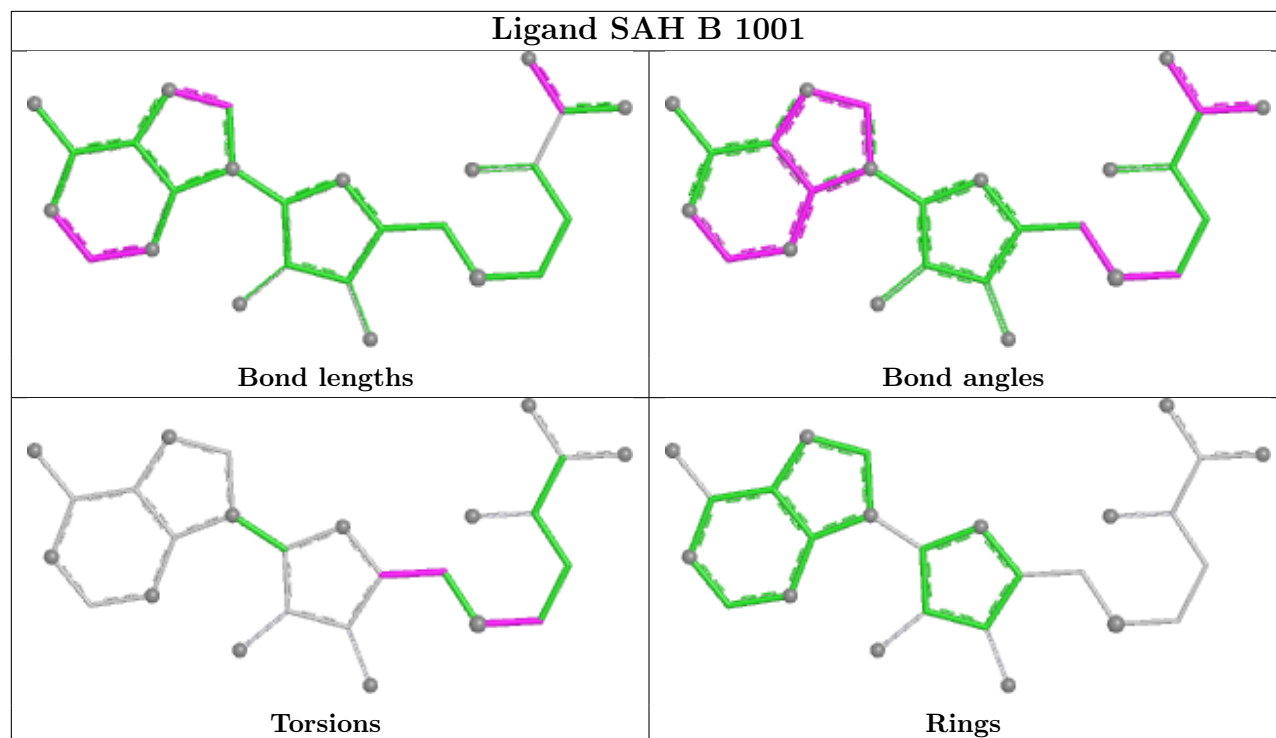
There are no ring outliers.

9 monomers are involved in 11 short contacts:

Mol	Chain	Res	Type	Clashes	Symm-Clashes
5	B	1002	EDO	1	0
5	A	608	EDO	1	0
5	A	622	EDO	1	0
5	B	1014	EDO	2	0
5	A	603	EDO	1	0
5	B	1015	EDO	1	0
5	A	617	EDO	1	0
5	B	1009	EDO	2	0
5	B	1012	EDO	1	0

The following is a two-dimensional graphical depiction of Mogul quality analysis of bond lengths, bond angles, torsion angles, and ring geometry for all instances of the Ligand of Interest. In addition, ligands with molecular weight > 250 and outliers as shown on the validation Tables will also be included. For torsion angles, if less than 5% of the Mogul distribution of torsion angles is within 10 degrees of the torsion angle in question, then that torsion angle is considered an outlier. Any bond that is central to one or more torsion angles identified as an outlier by Mogul will be highlighted in the graph. For rings, the root-mean-square deviation (RMSD) between the ring in question and similar rings identified by Mogul is calculated over all ring torsion angles. If the average RMSD is greater than 60 degrees and the minimal RMSD between the ring in question and any Mogul-identified rings is also greater than 60 degrees, then that ring is considered an outlier. The outliers are highlighted in purple. The color gray indicates Mogul did not find sufficient equivalents in the CSD to analyse the geometry.





5.7 Other polymers [i](#)

There are no such residues in this entry.

5.8 Polymer linkage issues [i](#)

There are no chain breaks in this entry.

6 Fit of model and data [i](#)

6.1 Protein, DNA and RNA chains [i](#)

In the following table, the column labelled ‘#RSRZ > 2’ contains the number (and percentage) of RSRZ outliers, followed by percent RSRZ outliers for the chain as percentile scores relative to all X-ray entries and entries of similar resolution. The OWAB column contains the minimum, median, 95th percentile and maximum values of the occupancy-weighted average B-factor per residue. The column labelled ‘Q < 0.9’ lists the number of (and percentage) of residues with an average occupancy less than 0.9.

Mol	Chain	Analysed	<RSRZ>	#RSRZ>2	OWAB(Å ²)	Q<0.9
1	Y	19/23 (82%)	0.22	1 (5%) 32 31	19, 25, 59, 64	0
1	Z	19/23 (82%)	0.27	2 (10%) 11 10	20, 27, 59, 64	0
2	A	484/596 (81%)	-0.29	6 (1%) 76 76	11, 24, 44, 68	6 (1%)
2	B	483/596 (81%)	-0.22	3 (0%) 85 86	12, 25, 46, 73	4 (0%)
All	All	1005/1238 (81%)	-0.24	12 (1%) 76 76	11, 24, 46, 73	10 (0%)

All (12) RSRZ outliers are listed below:

Mol	Chain	Res	Type	RSRZ
2	B	501	TYR	4.5
2	B	19	VAL	3.4
2	A	19	VAL	3.1
2	A	374	PRO	2.7
2	A	372	THR	2.6
1	Z	66	THR	2.6
2	B	264	ARG	2.5
1	Y	66	THR	2.5
1	Z	84	LYS	2.4
2	A	502	GLU	2.4
2	A	39	ALA	2.2
2	A	501	TYR	2.0

6.2 Non-standard residues in protein, DNA, RNA chains [i](#)

There are no non-standard protein/DNA/RNA residues in this entry.

6.3 Carbohydrates [i](#)

There are no oligosaccharides in this entry.

6.4 Ligands i

In the following table, the Atoms column lists the number of modelled atoms in the group and the number defined in the chemical component dictionary. The B-factors column lists the minimum, median, 95th percentile and maximum values of B factors of atoms in the group. The column labelled 'Q< 0.9' lists the number of atoms with occupancy less than 0.9.

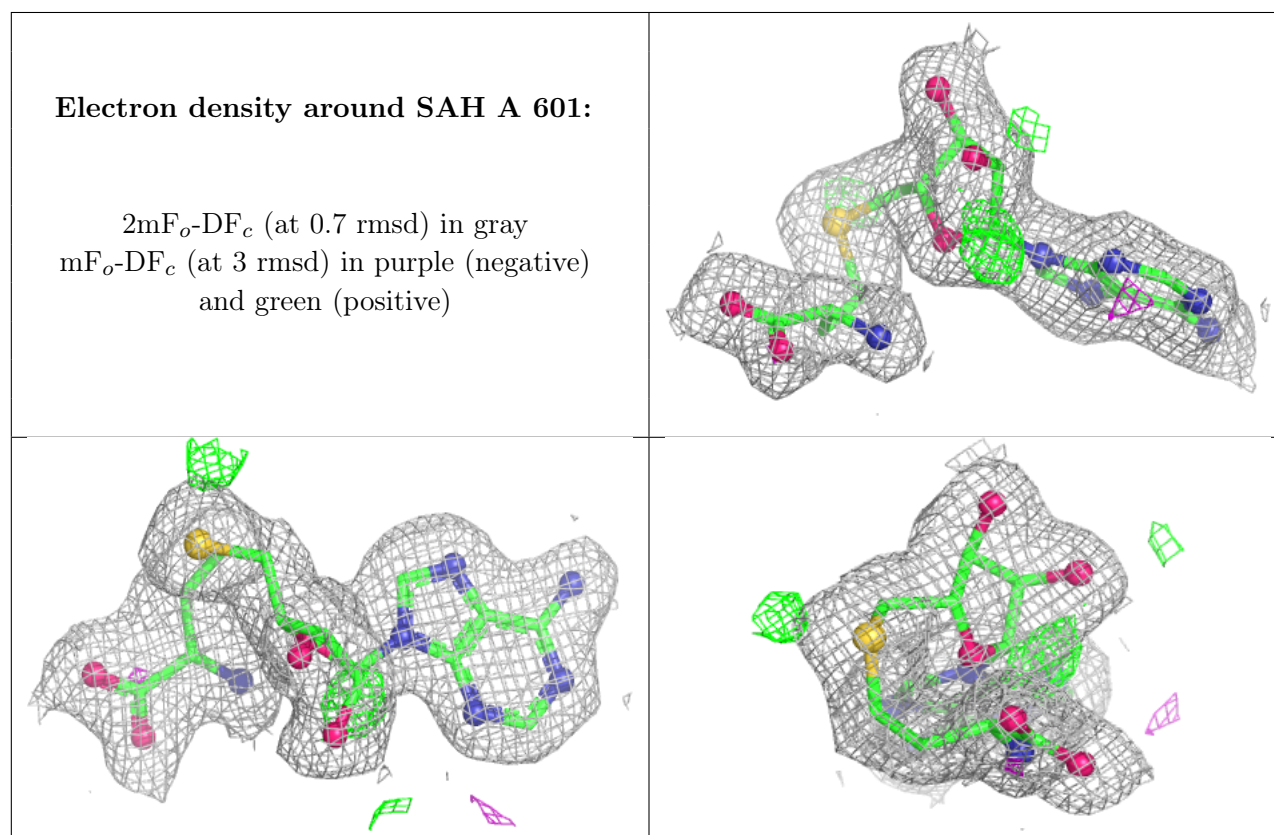
Mol	Type	Chain	Res	Atoms	RSCC	RSR	B-factors(Å ²)	Q<0.9
5	EDO	B	1009	4/4	0.80	0.14	40,49,52,54	0
5	EDO	A	622	4/4	0.83	0.18	38,42,45,48	0
5	EDO	B	1011	4/4	0.83	0.22	38,39,43,45	0
5	EDO	B	1012	4/4	0.83	0.17	48,49,51,55	0
5	EDO	B	1007	4/4	0.84	0.15	39,39,41,56	0
5	EDO	B	1005	4/4	0.84	0.17	42,43,44,46	0
5	EDO	B	1016	4/4	0.84	0.18	39,43,46,47	0
5	EDO	A	610	4/4	0.86	0.20	28,30,42,55	0
5	EDO	A	607	4/4	0.87	0.12	32,34,36,45	0
5	EDO	B	1014	4/4	0.87	0.15	29,30,42,49	0
5	EDO	B	1004	4/4	0.87	0.19	29,37,46,47	0
5	EDO	A	612	4/4	0.88	0.15	32,36,36,43	0
5	EDO	A	609	4/4	0.88	0.15	33,38,43,53	0
5	EDO	B	1008	4/4	0.88	0.12	32,33,36,39	0
5	EDO	A	608	4/4	0.88	0.16	33,40,47,54	0
5	EDO	A	605	4/4	0.89	0.19	28,40,40,41	0
5	EDO	A	615	4/4	0.89	0.12	27,32,35,38	0
5	EDO	A	606	4/4	0.89	0.11	42,43,44,47	0
3	GOL	A	602	6/6	0.89	0.12	43,53,55,58	0
5	EDO	B	1002	4/4	0.90	0.12	44,47,47,52	0
5	EDO	A	620	4/4	0.91	0.13	35,37,37,38	0
5	EDO	A	623	4/4	0.91	0.16	38,39,45,46	0
5	EDO	A	617	4/4	0.92	0.12	31,33,35,35	0
5	EDO	A	611	4/4	0.92	0.10	26,30,34,34	0
3	GOL	Y	101	6/6	0.92	0.14	30,36,46,56	0
5	EDO	A	604	4/4	0.92	0.11	33,36,42,52	0
5	EDO	Z	101	4/4	0.92	0.11	25,31,45,61	0
5	EDO	A	613	4/4	0.93	0.10	36,42,44,44	0
5	EDO	B	1003	4/4	0.93	0.09	33,37,39,42	0
5	EDO	B	1006	4/4	0.93	0.10	28,28,32,43	0
5	EDO	B	1010	4/4	0.93	0.09	32,32,33,40	0
5	EDO	A	619	4/4	0.94	0.11	25,31,31,32	0
5	EDO	A	603	4/4	0.94	0.14	26,29,34,36	0
5	EDO	B	1015	4/4	0.94	0.13	27,30,39,54	0
5	EDO	A	618	4/4	0.94	0.07	25,27,32,33	0
6	ACT	A	621	4/4	0.94	0.10	29,35,40,41	0
5	EDO	A	616	4/4	0.95	0.09	21,29,31,34	0

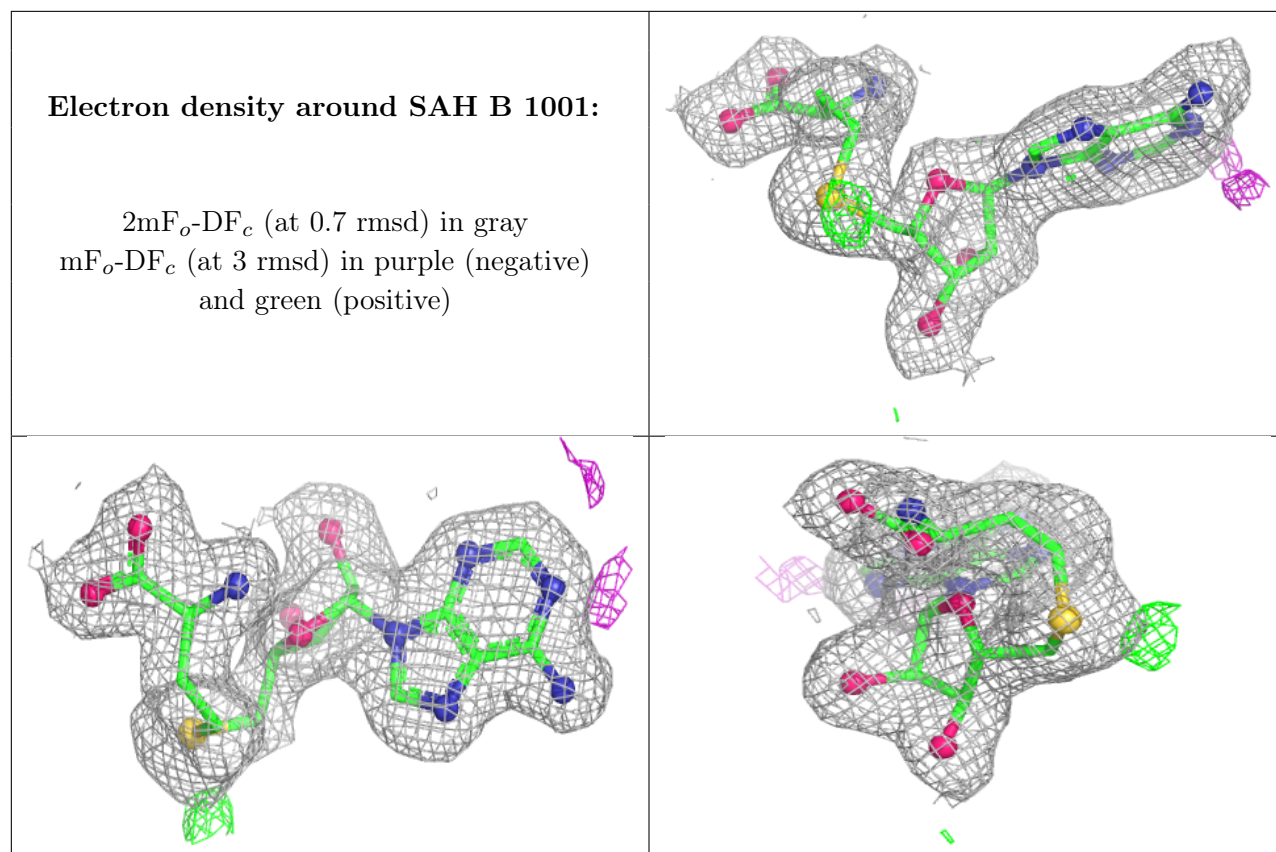
Continued on next page...

Continued from previous page...

Mol	Type	Chain	Res	Atoms	RSCC	RSR	B-factors(\AA^2)	Q<0.9
5	EDO	B	1013	4/4	0.95	0.10	24,26,34,37	0
5	EDO	A	614	4/4	0.95	0.09	31,32,36,38	0
4	SAH	A	601	26/26	0.97	0.06	13,17,22,26	0
4	SAH	B	1001	26/26	0.98	0.05	14,17,22,23	0

The following is a graphical depiction of the model fit to experimental electron density of all instances of the Ligand of Interest. In addition, ligands with molecular weight > 250 and outliers as shown on the geometry validation Tables will also be included. Each fit is shown from different orientation to approximate a three-dimensional view.





6.5 Other polymers [i](#)

There are no such residues in this entry.