



# Full wwPDB X-ray Structure Validation Report ⓘ

Mar 8, 2026 – 09:16 AM UTC

PDB ID : 6V2M / pdb\_00006v2m  
Title : Structure of Escherichia coli Asp269Asn mutant phosphoenolpyruvate carboxykinase  
Authors : Sokaribo, A.S.; Cotelesage, J.H.  
Deposited on : 2019-11-25  
Resolution : 1.66 Å(reported)

This is a Full wwPDB X-ray Structure Validation Report for a publicly released PDB entry.

We welcome your comments at [validation@mail.wwpdb.org](mailto:validation@mail.wwpdb.org)

A user guide is available at

<https://www.wwpdb.org/validation/2017/XrayValidationReportHelp>

with specific help available everywhere you see the ⓘ symbol.

The types of validation reports are described at

<http://www.wwpdb.org/validation/2017/FAQs#types>.

---

The following versions of software and data (see [references ⓘ](#)) were used in the production of this report:

MolProbity : 4-5-2 with Phenix2.0  
Mogul : 2022.3.0, CSD as543be (2022)  
Xtrriage (Phenix) : 2.0  
EDS : 3.0  
Buster-report : wwPDB partial adaption of 1.1.7 (2018)  
Percentile statistics : 20250101.v01 (using entries in the PDB archive January 1st 2025)  
CCP4 : 9.0.010 (Gargrove)  
Density-Fitness : 1.0.12  
Ideal geometry (proteins) : Engh & Huber (2001)  
Ideal geometry (DNA, RNA) : Parkinson et al. (1996)  
Validation Pipeline (wwPDB-VP) : 2.49

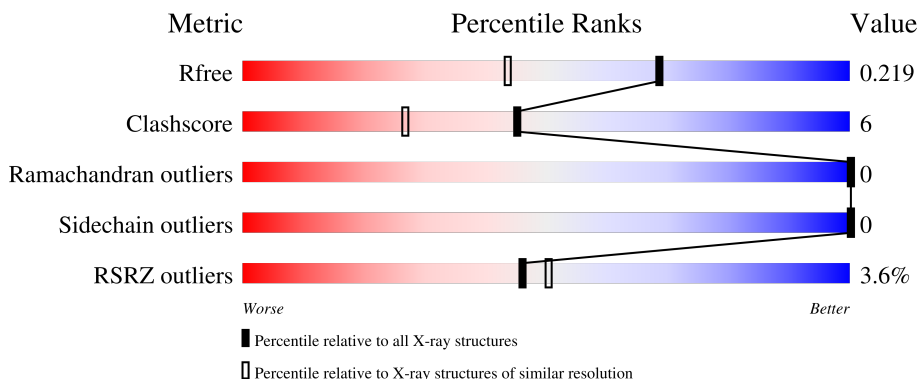
# 1 Overall quality at a glance

The following experimental techniques were used to determine the structure:

*X-RAY DIFFRACTION*

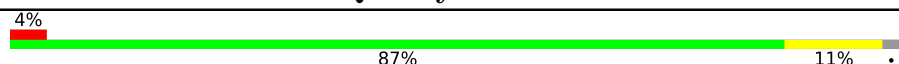
The reported resolution of this entry is 1.66 Å.

Percentile scores (ranging between 0-100) for global validation metrics of the entry are shown in the following graphic. The table shows the number of entries on which the scores are based.



Metric	Whole archive (#Entries)	Similar resolution (#Entries, resolution range(Å))
$R_{free}$	180053	2563 (1.66-1.66)
Clashscore	190562	2662 (1.66-1.66)
Ramachandran outliers	187476	2621 (1.66-1.66)
Sidechain outliers	187428	2621 (1.66-1.66)
RSRZ outliers	180081	2564 (1.66-1.66)

The table below summarises the geometric issues observed across the polymeric chains and their fit to the electron density. The red, orange, yellow and green segments of the lower bar indicate the fraction of residues that contain outliers for  $\geq 3$ , 2, 1 and 0 types of geometric quality criteria respectively. A grey segment represents the fraction of residues that are not modelled. The numeric value for each fraction is indicated below the corresponding segment, with a dot representing fractions  $\leq 5\%$ . The upper red bar (where present) indicates the fraction of residues that have poor fit to the electron density. The numeric value is given above the bar.

Mol	Chain	Length	Quality of chain
1	A	540	

## 2 Entry composition [i](#)

There are 5 unique types of molecules in this entry. The entry contains 4459 atoms, of which 0 are hydrogens and 0 are deuteriums.

In the tables below, the ZeroOcc column contains the number of atoms modelled with zero occupancy, the AltConf column contains the number of residues with at least one atom in alternate conformation and the Trace column contains the number of residues modelled with at most 2 atoms.

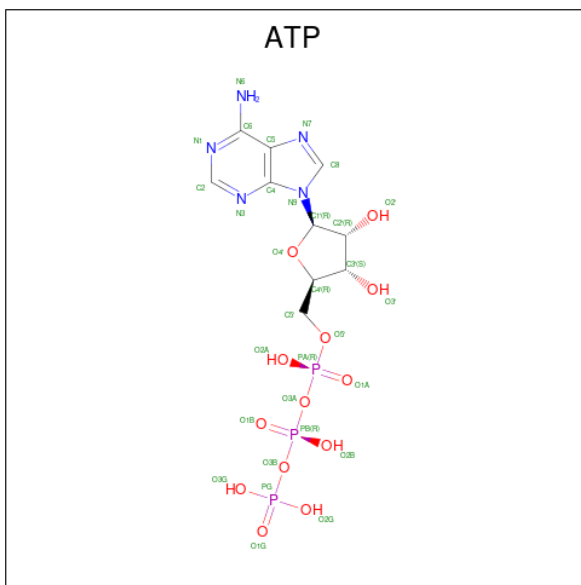
- Molecule 1 is a protein called Phosphoenolpyruvate carboxykinase (ATP).

Mol	Chain	Residues	Atoms					ZeroOcc	AltConf	Trace
			Total	C	N	O	S			
1	A	531	4099	2609	694	781	15	0	0	0

There are 3 discrepancies between the modelled and reference sequences:

Chain	Residue	Modelled	Actual	Comment	Reference
A	10	GLU	GLN	conflict	UNP A0A400L9R1
A	269	ASN	ASP	engineered mutation	UNP A0A400L9R1
A	315	LYS	VAL	conflict	UNP A0A400L9R1

- Molecule 2 is ADENOSINE-5'-TRIPHOSPHATE (CCD ID: ATP) (formula:  $C_{10}H_{16}N_5O_{13}P_3$ ).



- Molecule 3 is MAGNESIUM ION (CCD ID: MG) (formula: Mg) (labeled as "Ligand of Interest" by depositor).

Mol	Chain	Residues	Atoms	ZeroOcc	AltConf
3	A	1	Total Mg 1 1	0	0

- Molecule 4 is CALCIUM ION (CCD ID: CA) (formula: Ca) (labeled as "Ligand of Interest" by depositor).

Mol	Chain	Residues	Atoms	ZeroOcc	AltConf
4	A	1	Total Ca 1 1	0	0

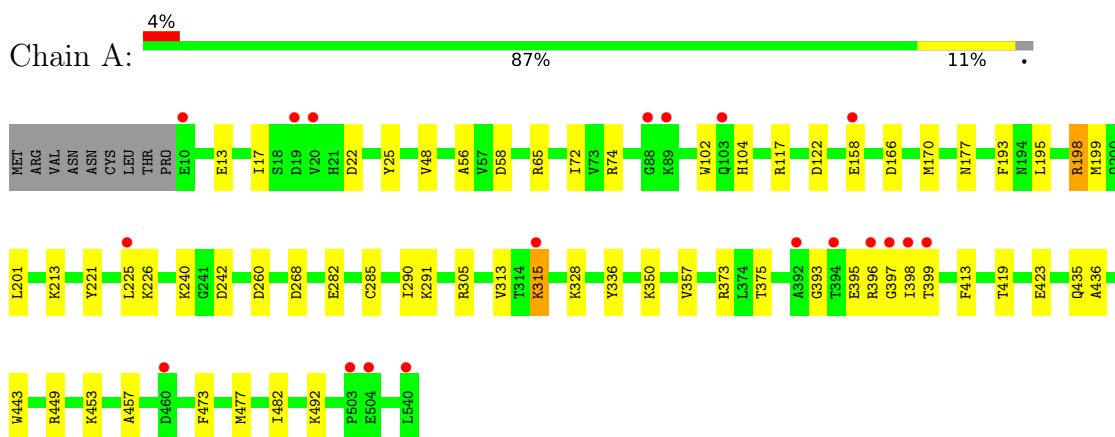
- Molecule 5 is water.

Mol	Chain	Residues	Atoms	ZeroOcc	AltConf
5	A	327	Total O 327 327	0	0

### 3 Residue-property plots [i](#)

These plots are drawn for all protein, RNA, DNA and oligosaccharide chains in the entry. The first graphic for a chain summarises the proportions of the various outlier classes displayed in the second graphic. The second graphic shows the sequence view annotated by issues in geometry and electron density. Residues are color-coded according to the number of geometric quality criteria for which they contain at least one outlier: green = 0, yellow = 1, orange = 2 and red = 3 or more. A red dot above a residue indicates a poor fit to the electron density ( $RSRZ > 2$ ). Stretches of 2 or more consecutive residues without any outlier are shown as a green connector. Residues present in the sample, but not in the model, are shown in grey.

- Molecule 1: Phosphoenolpyruvate carboxykinase (ATP)



## 4 Data and refinement statistics

Property	Value	Source
Space group	C 1 2 1	Depositor
Cell constants a, b, c, $\alpha$ , $\beta$ , $\gamma$	124.78Å 94.22Å 46.54Å 90.00° 94.79° 90.00°	Depositor
Resolution (Å)	46.38 – 1.66 46.38 – 1.66	Depositor EDS
% Data completeness (in resolution range)	99.7 (46.38-1.66) 87.2 (46.38-1.66)	Depositor EDS
$R_{merge}$	0.12	Depositor
$R_{sym}$	(Not available)	Depositor
$\langle I/\sigma(I) \rangle$ <sup>1</sup>	0.49 (at 1.66Å)	Xtrriage
Refinement program	PHENIX 1.17.1_3660	Depositor
R, $R_{free}$	0.185 , (Not available) 0.183 , 0.219	Depositor DCC
$R_{free}$ test set	3156 reflections (5.00%)	wwPDB-VP
Wilson B-factor (Å <sup>2</sup> )	20.9	Xtrriage
Anisotropy	0.111	Xtrriage
Bulk solvent $k_{sol}$ (e/Å <sup>3</sup> ), $B_{sol}$ (Å <sup>2</sup> )	0.33 , 30.6	EDS
L-test for twinning <sup>2</sup>	$\langle  L  \rangle = 0.49$ , $\langle L^2 \rangle = 0.32$	Xtrriage
Estimated twinning fraction	No twinning to report.	Xtrriage
$F_o, F_c$ correlation	0.97	EDS
Total number of atoms	4459	wwPDB-VP
Average B, all atoms (Å <sup>2</sup> )	30.0	wwPDB-VP

Xtrriage's analysis on translational NCS is as follows: *The largest off-origin peak in the Patterson function is 5.91% of the height of the origin peak. No significant pseudotranslation is detected.*

<sup>1</sup>Intensities estimated from amplitudes.

<sup>2</sup>Theoretical values of  $\langle |L| \rangle$ ,  $\langle L^2 \rangle$  for acentric reflections are 0.5, 0.333 respectively for untwinned datasets, and 0.375, 0.2 for perfectly twinned datasets.

## 5 Model quality [i](#)

### 5.1 Standard geometry [i](#)

Bond lengths and bond angles in the following residue types are not validated in this section: CA, MG, ATP

The Z score for a bond length (or angle) is the number of standard deviations the observed value is removed from the expected value. A bond length (or angle) with  $|Z| > 5$  is considered an outlier worth inspection. RMSZ is the root-mean-square of all Z scores of the bond lengths (or angles).

Mol	Chain	Bond lengths		Bond angles	
		RMSZ	# Z  >5	RMSZ	# Z  >5
1	A	0.70	2/4195 (0.0%)	0.84	9/5699 (0.2%)

All (2) bond length outliers are listed below:

Mol	Chain	Res	Type	Atoms	Z	Observed(Å)	Ideal(Å)
1	A	398	ILE	CG1-CD1	-7.03	1.24	1.51
1	A	225	LEU	N-CA	-5.62	1.39	1.46

All (9) bond angle outliers are listed below:

Mol	Chain	Res	Type	Atoms	Z	Observed(°)	Ideal(°)
1	A	396	ARG	NE-CZ-NH2	8.83	127.14	119.20
1	A	396	ARG	CB-CG-CD	-6.91	95.40	111.30
1	A	225	LEU	CA-C-O	-5.95	114.24	120.55
1	A	397	GLY	N-CA-C	-5.89	99.21	113.18
1	A	395	GLU	CA-C-N	5.72	132.39	122.56
1	A	395	GLU	C-N-CA	5.72	132.39	122.56
1	A	315	LYS	CG-CD-CE	5.66	124.31	111.30
1	A	74	ARG	CD-NE-CZ	5.33	131.86	124.40
1	A	198	ARG	NE-CZ-NH1	5.01	126.51	121.50

There are no chirality outliers.

There are no planarity outliers.

### 5.2 Too-close contacts [i](#)

In the following table, the Non-H and H(model) columns list the number of non-hydrogen atoms and hydrogen atoms in the chain respectively. The H(added) column lists the number of hydrogen atoms added and optimized by MolProbity. The Clashes column lists the number of clashes within

the asymmetric unit, whereas Symm-Clashes lists symmetry-related clashes.

Mol	Chain	Non-H	H(model)	H(added)	Clashes	Symm-Clashes
1	A	4099	0	3995	48	0
2	A	31	0	12	0	0
3	A	1	0	0	0	0
4	A	1	0	0	0	0
5	A	327	0	0	15	1
All	All	4459	0	4007	48	1

The all-atom clashscore is defined as the number of clashes found per 1000 atoms (including hydrogen atoms). The all-atom clashscore for this structure is 6.

All (48) close contacts within the same asymmetric unit are listed below, sorted by their clash magnitude.

Atom-1	Atom-2	Interatomic distance (Å)	Clash overlap (Å)
1:A:166:ASP:HB3	1:A:198:ARG:HH21	1.16	1.03
1:A:166:ASP:HB3	1:A:198:ARG:NH2	1.81	0.94
1:A:242:ASP:OD1	5:A:701:HOH:O	1.92	0.86
1:A:56:ALA:HB3	1:A:315:LYS:HD3	1.66	0.78
1:A:268:ASP:OD2	5:A:702:HOH:O	2.03	0.77
1:A:419:THR:O	1:A:423:GLU:HG3	1.91	0.70
1:A:56:ALA:CB	1:A:315:LYS:HD3	2.28	0.64
1:A:305:ARG:NH1	5:A:710:HOH:O	2.29	0.62
1:A:48:VAL:CG2	1:A:315:LYS:HD2	2.29	0.62
1:A:393:GLY:C	1:A:399:THR:HB	2.25	0.61
1:A:72:ILE:HD13	1:A:193:PHE:HB2	1.83	0.59
1:A:170:MET:HE2	1:A:199:MET:HE1	1.84	0.58
1:A:58:ASP:OD1	1:A:328:LYS:HE2	2.03	0.58
1:A:282:GLU:OE1	5:A:704:HOH:O	2.17	0.57
1:A:375:THR:HA	5:A:713:HOH:O	2.05	0.57
1:A:290:ILE:HG13	1:A:291:LYS:HD3	1.86	0.56
1:A:285:CYS:HB2	1:A:336:TYR:CE1	2.40	0.55
1:A:305:ARG:NE	5:A:703:HOH:O	2.11	0.54
1:A:240:LYS:HB2	5:A:701:HOH:O	2.08	0.54
1:A:373:ARG:NH1	5:A:708:HOH:O	2.24	0.53
1:A:104:HIS:HE1	1:A:177:ASN:OD1	1.92	0.52
1:A:48:VAL:HG21	1:A:315:LYS:HD2	1.92	0.51
1:A:72:ILE:CD1	1:A:193:PHE:HB2	2.39	0.51
1:A:117:ARG:HD2	5:A:741:HOH:O	2.12	0.50
1:A:65:ARG:NE	5:A:705:HOH:O	2.20	0.49
1:A:473:PHE:CZ	1:A:482:ILE:HD11	2.47	0.49
1:A:305:ARG:NH2	5:A:703:HOH:O	2.43	0.49

*Continued on next page...*

Continued from previous page...

Atom-1	Atom-2	Interatomic distance (Å)	Clash overlap (Å)
1:A:22:ASP:CB	1:A:117:ARG:HG3	2.42	0.48
1:A:25:TYR:OH	1:A:122:ASP:OD2	2.30	0.48
1:A:268:ASP:CG	5:A:702:HOH:O	2.54	0.48
1:A:453:LYS:HZ2	1:A:457:ALA:HB2	1.79	0.48
1:A:350:LYS:NZ	5:A:728:HOH:O	2.48	0.46
1:A:170:MET:HE2	1:A:199:MET:CE	2.44	0.46
1:A:102:TRP:CH2	1:A:201:LEU:HG	2.51	0.46
1:A:313:VAL:O	1:A:315:LYS:HE2	2.16	0.45
1:A:158:GLU:OE1	5:A:707:HOH:O	2.21	0.45
1:A:453:LYS:NZ	1:A:457:ALA:HB2	2.32	0.45
1:A:492:LYS:HB3	1:A:492:LYS:HE3	1.65	0.44
1:A:443:TRP:CE2	1:A:449:ARG:HG3	2.53	0.44
1:A:435:GLN:OE1	5:A:706:HOH:O	2.21	0.44
1:A:260:ASP:OD1	1:A:260:ASP:C	2.62	0.42
1:A:195:LEU:HD23	1:A:221:TYR:CE2	2.54	0.42
1:A:13:GLU:HG2	1:A:17:ILE:O	2.19	0.42
1:A:213:LYS:HE2	1:A:413:PHE:CZ	2.55	0.42
1:A:357:VAL:O	1:A:436:ALA:HA	2.19	0.41
1:A:117:ARG:CZ	1:A:117:ARG:HB3	2.50	0.41
1:A:477:MET:HE3	1:A:477:MET:HB2	1.69	0.41
1:A:226:LYS:HB3	1:A:226:LYS:NZ	2.37	0.40

All (1) symmetry-related close contacts are listed below. The label for Atom-2 includes the symmetry operator and encoded unit-cell translations to be applied.

Atom-1	Atom-2	Interatomic distance (Å)	Clash overlap (Å)
5:A:836:HOH:O	5:A:1006:HOH:O[1_554]	2.18	0.02

## 5.3 Torsion angles [\(i\)](#)

### 5.3.1 Protein backbone [\(i\)](#)

In the following table, the Percentiles column shows the percent Ramachandran outliers of the chain as a percentile score with respect to all X-ray entries followed by that with respect to entries of similar resolution.

The Analysed column shows the number of residues for which the backbone conformation was analysed, and the total number of residues.

Mol	Chain	Analysed	Favoured	Allowed	Outliers	Percentiles	
1	A	529/540 (98%)	516 (98%)	13 (2%)	0	100	100

There are no Ramachandran outliers to report.

### 5.3.2 Protein sidechains [i](#)

In the following table, the Percentiles column shows the percent sidechain outliers of the chain as a percentile score with respect to all X-ray entries followed by that with respect to entries of similar resolution.

The Analysed column shows the number of residues for which the sidechain conformation was analysed, and the total number of residues.

Mol	Chain	Analysed	Rotameric	Outliers	Percentiles	
1	A	430/449 (96%)	430 (100%)	0	100	100

There are no protein residues with a non-rotameric sidechain to report.

Sometimes sidechains can be flipped to improve hydrogen bonding and reduce clashes. All (3) such sidechains are listed below:

Mol	Chain	Res	Type
1	A	104	HIS
1	A	177	ASN
1	A	183	GLN

### 5.3.3 RNA [i](#)

There are no RNA molecules in this entry.

## 5.4 Non-standard residues in protein, DNA, RNA chains [i](#)

There are no non-standard protein/DNA/RNA residues in this entry.

## 5.5 Carbohydrates [i](#)

There are no oligosaccharides in this entry.

## 5.6 Ligand geometry [i](#)

Of 3 ligands modelled in this entry, 2 are monoatomic - leaving 1 for Mogul analysis.

In the following table, the Counts columns list the number of bonds (or angles) for which Mogul statistics could be retrieved, the number of bonds (or angles) that are observed in the model and the number of bonds (or angles) that are defined in the Chemical Component Dictionary. The Link column lists molecule types, if any, to which the group is linked. The Z score for a bond length (or angle) is the number of standard deviations the observed value is removed from the expected value. A bond length (or angle) with  $|Z| > 2$  is considered an outlier worth inspection. RMSZ is the root-mean-square of all Z scores of the bond lengths (or angles).

Mol	Type	Chain	Res	Link	Bond lengths			Bond angles		
					Counts	RMSZ	# Z  > 2	Counts	RMSZ	# Z  > 2
2	ATP	A	601	4,3	32,33,33	1.53	5 (15%)	48,52,52	1.83	10 (20%)

In the following table, the Chirals column lists the number of chiral outliers, the number of chiral centers analysed, the number of these observed in the model and the number defined in the Chemical Component Dictionary. Similar counts are reported in the Torsion and Rings columns. '-' means no outliers of that kind were identified.

Mol	Type	Chain	Res	Link	Chirals	Torsions	Rings
2	ATP	A	601	4,3	-	3/22/38/38	0/3/3/3

All (5) bond length outliers are listed below:

Mol	Chain	Res	Type	Atoms	Z	Observed(Å)	Ideal(Å)
2	A	601	ATP	C5-C4	5.01	1.48	1.39
2	A	601	ATP	C4-N9	-2.82	1.31	1.37
2	A	601	ATP	PB-O3B	-2.53	1.56	1.59
2	A	601	ATP	C5-N7	-2.26	1.35	1.39
2	A	601	ATP	C5-C6	2.20	1.47	1.41

All (10) bond angle outliers are listed below:

Mol	Chain	Res	Type	Atoms	Z	Observed(°)	Ideal(°)
2	A	601	ATP	C5-C4-N3	-5.42	119.25	126.72
2	A	601	ATP	N3-C4-N9	4.70	135.16	127.17
2	A	601	ATP	N3-C2-N1	-3.58	123.17	128.58
2	A	601	ATP	C2-N3-C4	3.57	120.55	111.83
2	A	601	ATP	C4-C5-N7	-3.32	106.79	110.58
2	A	601	ATP	O2B-PB-O3B	3.27	116.10	107.27
2	A	601	ATP	C4-N9-C8	2.87	108.76	105.74
2	A	601	ATP	O3B-PB-O1B	-2.44	103.36	110.70
2	A	601	ATP	O2A-PA-O1A	2.31	123.20	112.44
2	A	601	ATP	C5-N7-C8	2.02	106.62	103.45

There are no chirality outliers.

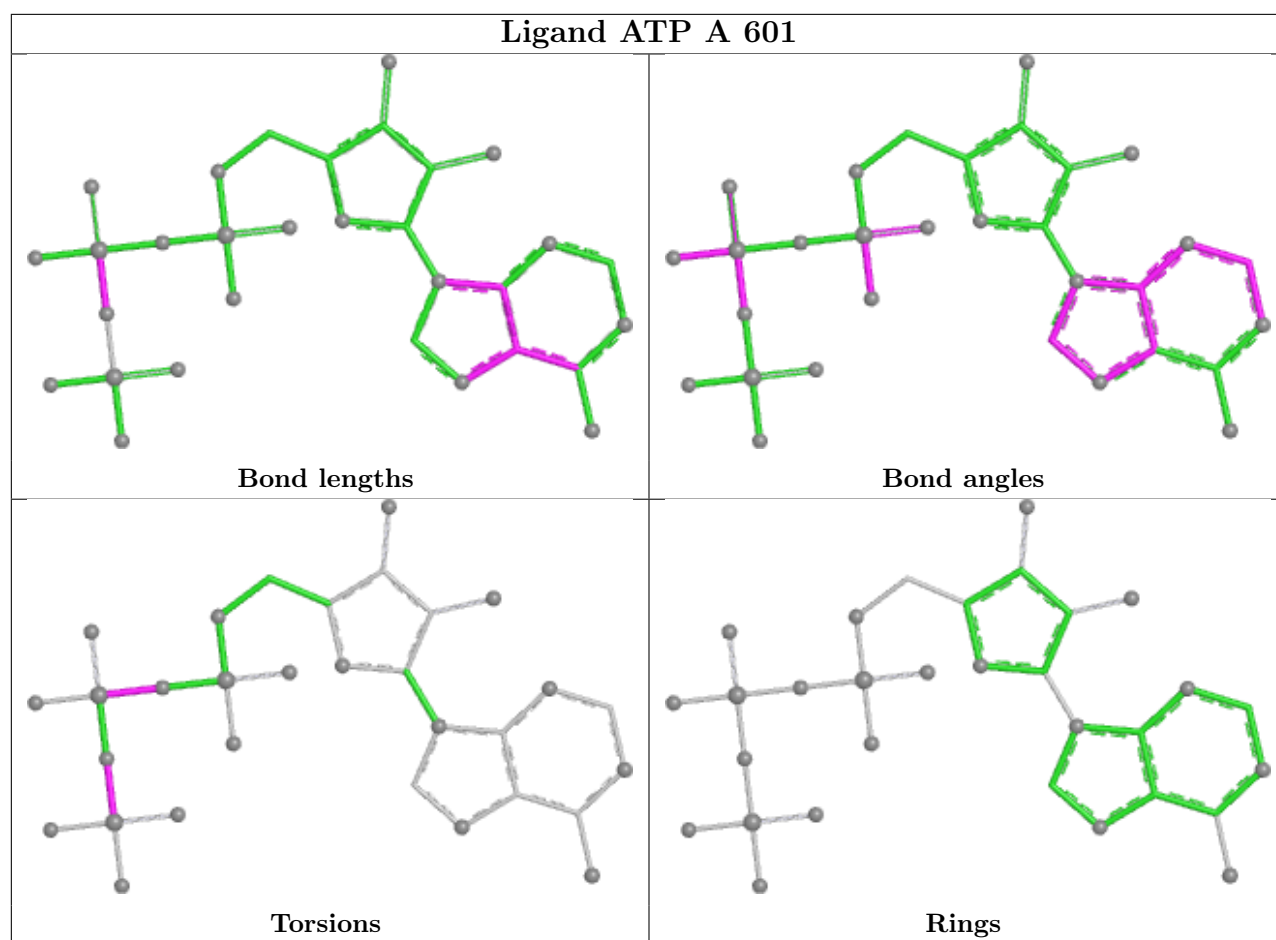
All (3) torsion outliers are listed below:

Mol	Chain	Res	Type	Atoms
2	A	601	ATP	PB-O3B-PG-O3G
2	A	601	ATP	PB-O3B-PG-O1G
2	A	601	ATP	PA-O3A-PB-O2B

There are no ring outliers.

No monomer is involved in short contacts.

The following is a two-dimensional graphical depiction of Mogul quality analysis of bond lengths, bond angles, torsion angles, and ring geometry for all instances of the Ligand of Interest. In addition, ligands with molecular weight > 250 and outliers as shown on the validation Tables will also be included. For torsion angles, if less than 5% of the Mogul distribution of torsion angles is within 10 degrees of the torsion angle in question, then that torsion angle is considered an outlier. Any bond that is central to one or more torsion angles identified as an outlier by Mogul will be highlighted in the graph. For rings, the root-mean-square deviation (RMSD) between the ring in question and similar rings identified by Mogul is calculated over all ring torsion angles. If the average RMSD is greater than 60 degrees and the minimal RMSD between the ring in question and any Mogul-identified rings is also greater than 60 degrees, then that ring is considered an outlier. The outliers are highlighted in purple. The color gray indicates Mogul did not find sufficient equivalents in the CSD to analyse the geometry.



## 5.7 Other polymers [i](#)

There are no such residues in this entry.

## 5.8 Polymer linkage issues [i](#)

There are no chain breaks in this entry.

## 6 Fit of model and data [i](#)

### 6.1 Protein, DNA and RNA chains [i](#)

In the following table, the column labelled ‘#RSRZ> 2’ contains the number (and percentage) of RSRZ outliers, followed by percent RSRZ outliers for the chain as percentile scores relative to all X-ray entries and entries of similar resolution. The OWAB column contains the minimum, median, 95<sup>th</sup> percentile and maximum values of the occupancy-weighted average B-factor per residue. The column labelled ‘Q< 0.9’ lists the number of (and percentage) of residues with an average occupancy less than 0.9.

Mol	Chain	Analysed	<RSRZ>	#RSRZ>2	OWAB(Å <sup>2</sup> )	Q<0.9
1	A	531/540 (98%)	0.20	19 (3%) 46 50	18, 28, 47, 80	0

All (19) RSRZ outliers are listed below:

Mol	Chain	Res	Type	RSRZ
1	A	398	ILE	6.1
1	A	397	GLY	6.0
1	A	396	ARG	4.0
1	A	399	THR	4.0
1	A	88	GLY	3.8
1	A	394	THR	3.5
1	A	315	LYS	3.3
1	A	103	GLN	2.7
1	A	19	ASP	2.7
1	A	392	ALA	2.7
1	A	225	LEU	2.6
1	A	10	GLU	2.4
1	A	158	GLU	2.4
1	A	540	LEU	2.4
1	A	503	PRO	2.2
1	A	504	GLU	2.2
1	A	89	LYS	2.1
1	A	460	ASP	2.1
1	A	20	VAL	2.0

### 6.2 Non-standard residues in protein, DNA, RNA chains [i](#)

There are no non-standard protein/DNA/RNA residues in this entry.

### 6.3 Carbohydrates [i](#)

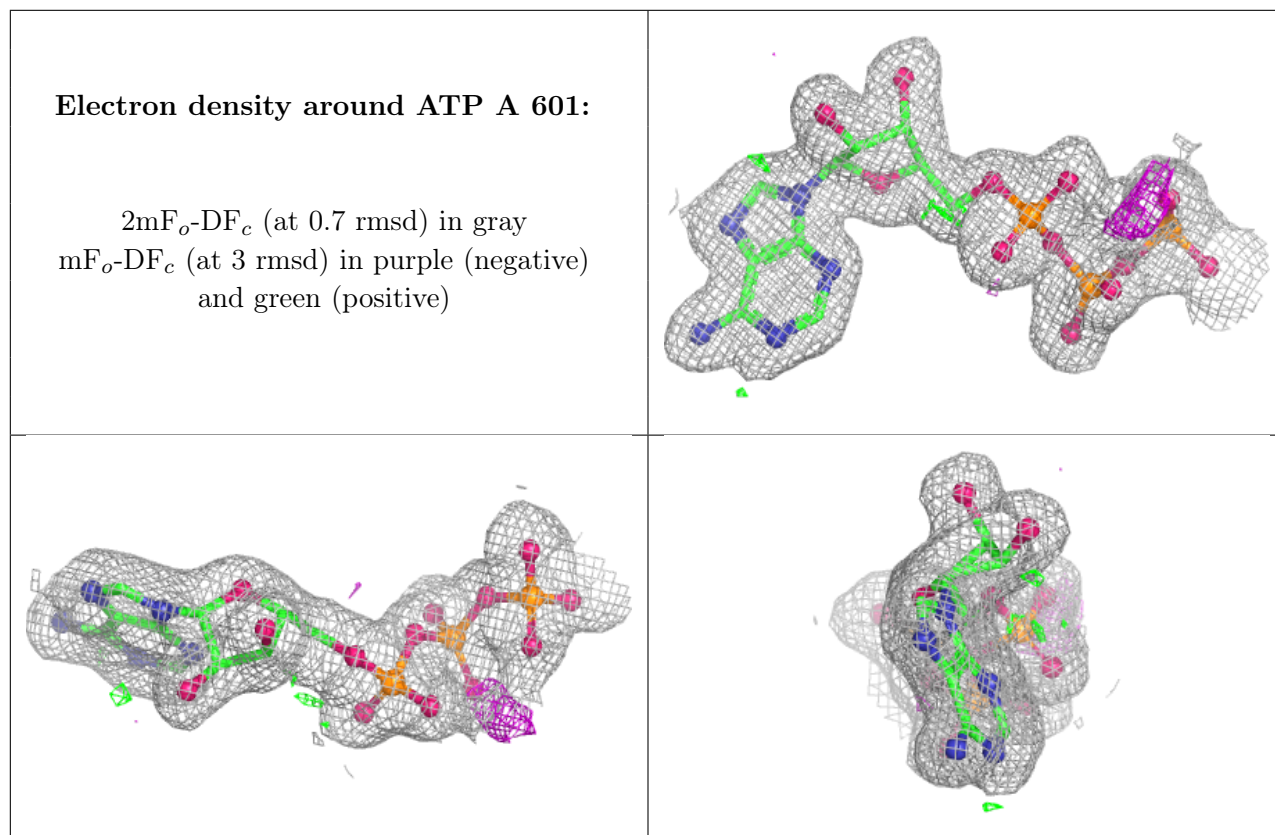
There are no oligosaccharides in this entry.

### 6.4 Ligands [i](#)

In the following table, the Atoms column lists the number of modelled atoms in the group and the number defined in the chemical component dictionary. The B-factors column lists the minimum, median, 95<sup>th</sup> percentile and maximum values of B factors of atoms in the group. The column labelled 'Q< 0.9' lists the number of atoms with occupancy less than 0.9.

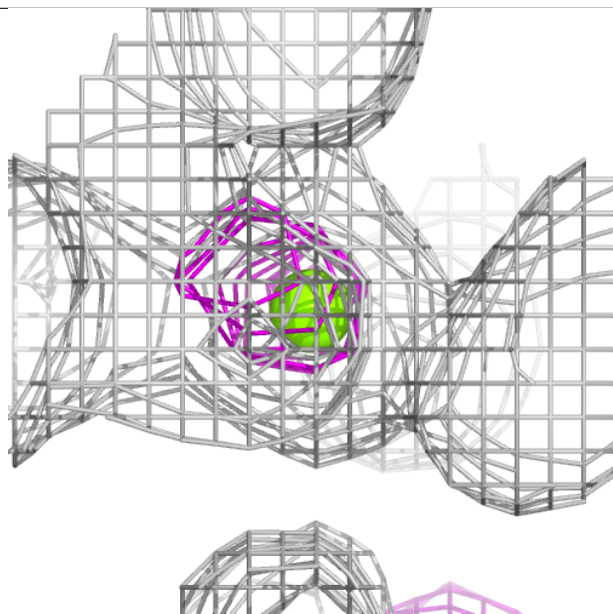
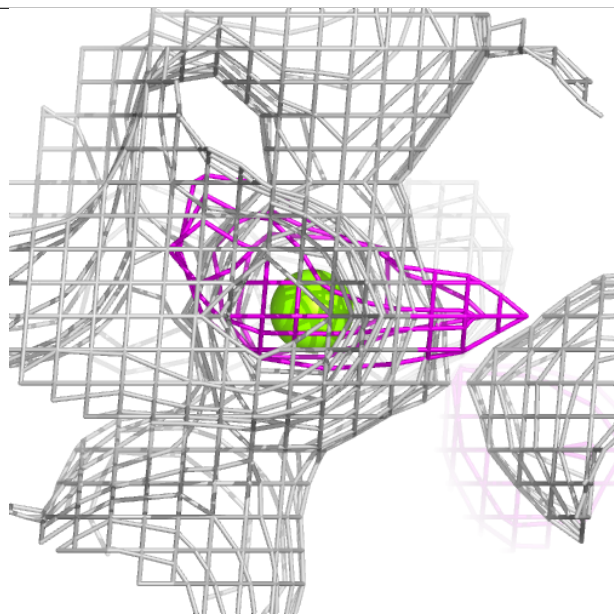
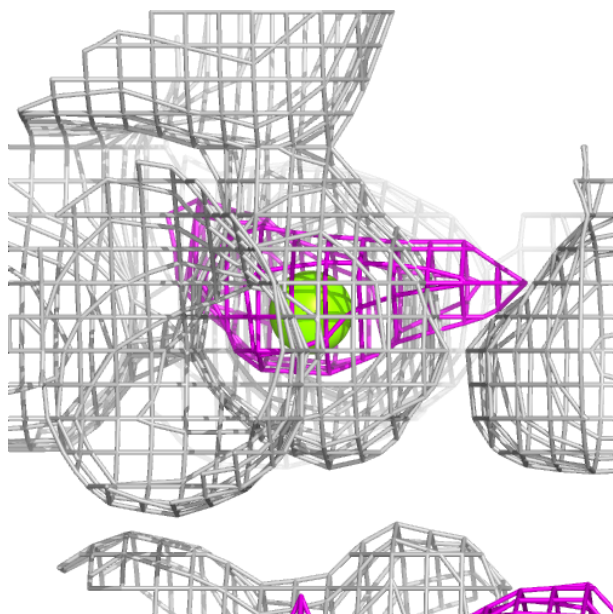
Mol	Type	Chain	Res	Atoms	RSCC	RSR	B-factors(Å <sup>2</sup> )	Q<0.9
2	ATP	A	601	31/31	0.98	0.04	21,25,29,31	0
3	MG	A	602	1/1	0.98	0.17	27,27,27,27	0
4	CA	A	603	1/1	0.99	0.03	37,37,37,37	0

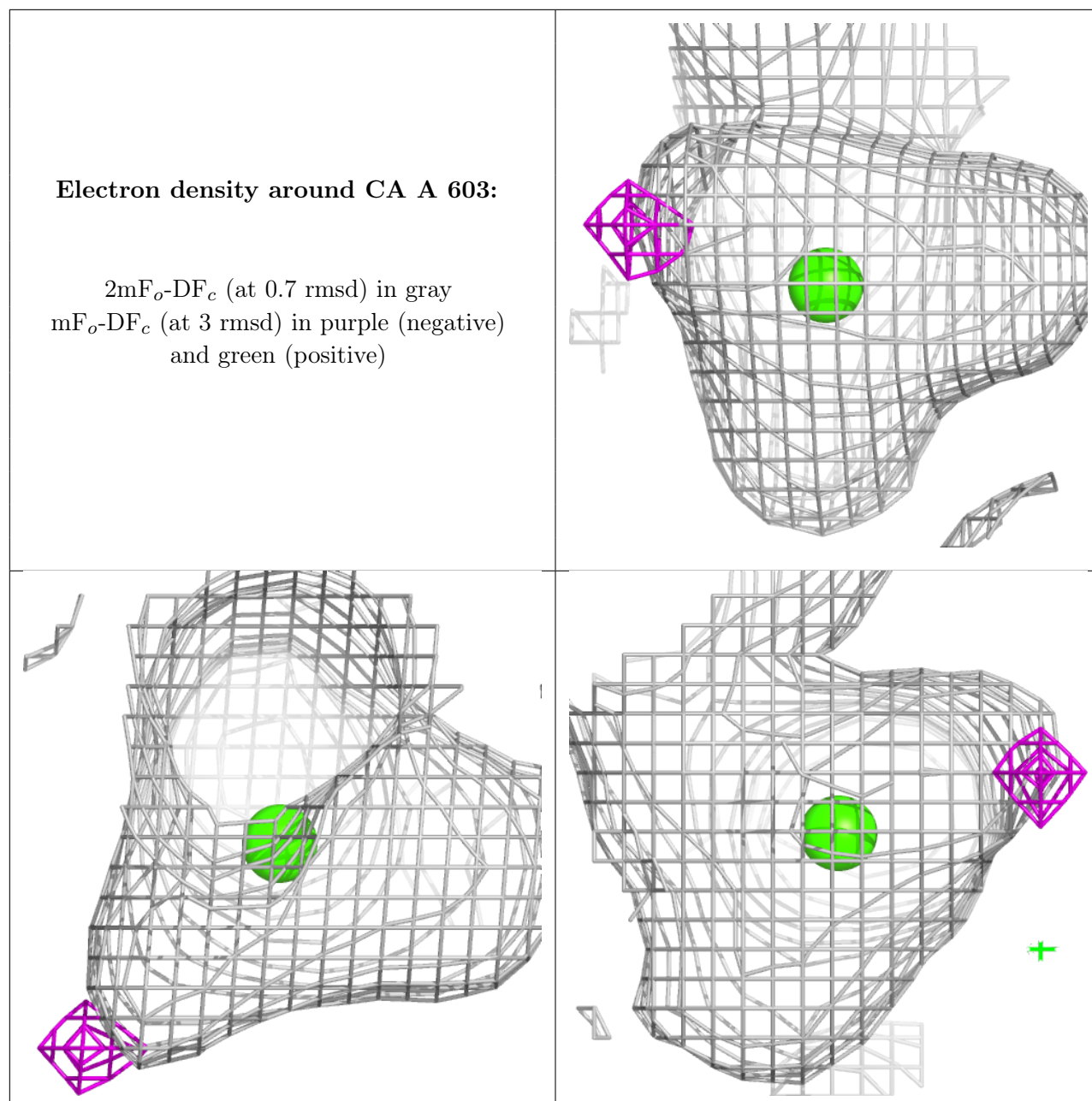
The following is a graphical depiction of the model fit to experimental electron density of all instances of the Ligand of Interest. In addition, ligands with molecular weight > 250 and outliers as shown on the geometry validation Tables will also be included. Each fit is shown from different orientation to approximate a three-dimensional view.



**Electron density around MG A 602:**

$2mF_o-DF_c$  (at 0.7 rmsd) in gray  
 $mF_o-DF_c$  (at 3 rmsd) in purple (negative)  
and green (positive)





## 6.5 Other polymers [i](#)

There are no such residues in this entry.