



Full wwPDB X-ray Structure Validation Report ⓘ

Mar 5, 2026 – 09:15 PM UTC

PDB ID : 6V06 / pdb_00006v06
Title : Crystal structure of Beta-2 glycoprotein I purified from plasma (pB2GPI)
Authors : Chen, Z.; Ruben, E.A.; Planer, W.; Chinnaraj, M.; Zuo, X.; Pengo, V.; Macor, P.; Tedesco, F.; Pozzi, N.
Deposited on : 2019-11-18
Resolution : 2.40 Å(reported)

This is a Full wwPDB X-ray Structure Validation Report for a publicly released PDB entry.

We welcome your comments at validation@mail.wwpdb.org

A user guide is available at

<https://www.wwpdb.org/validation/2017/XrayValidationReportHelp>

with specific help available everywhere you see the ⓘ symbol.

The types of validation reports are described at

<http://www.wwpdb.org/validation/2017/FAQs#types>.

The following versions of software and data (see [references ⓘ](#)) were used in the production of this report:

MolProbity : 4-5-2 with Phenix2.0
Mogul : 2022.3.0, CSD as543be (2022)
Xtriage (Phenix) : 2.0
EDS : 3.0
Percentile statistics : 20250101.v01 (using entries in the PDB archive January 1st 2025)
CCP4 : 9.0.010 (Gargrove)
Density-Fitness : 1.0.12
Ideal geometry (proteins) : Engh & Huber (2001)
Ideal geometry (DNA, RNA) : Parkinson et al. (1996)
Validation Pipeline (wwPDB-VP) : 2.49

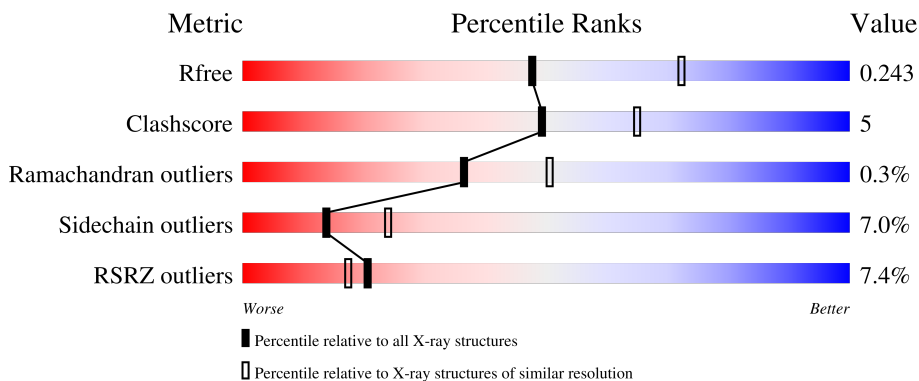
1 Overall quality at a glance

The following experimental techniques were used to determine the structure:

X-RAY DIFFRACTION

The reported resolution of this entry is 2.40 Å.

Percentile scores (ranging between 0-100) for global validation metrics of the entry are shown in the following graphic. The table shows the number of entries on which the scores are based.



Metric	Whole archive (#Entries)	Similar resolution (#Entries, resolution range(Å))
R_{free}	180053	4912 (2.40-2.40)
Clashscore	190562	5391 (2.40-2.40)
Ramachandran outliers	187476	5320 (2.40-2.40)
Sidechain outliers	187428	5321 (2.40-2.40)
RSRZ outliers	180081	4916 (2.40-2.40)

The table below summarises the geometric issues observed across the polymeric chains and their fit to the electron density. The red, orange, yellow and green segments of the lower bar indicate the fraction of residues that contain outliers for ≥ 3 , 2, 1 and 0 types of geometric quality criteria respectively. A grey segment represents the fraction of residues that are not modelled. The numeric value for each fraction is indicated below the corresponding segment, with a dot representing fractions $\leq 5\%$. The upper red bar (where present) indicates the fraction of residues that have poor fit to the electron density. The numeric value is given above the bar.

Mol	Chain	Length	Quality of chain
1	A	326	
2	B	8	
3	C	8	
4	D	5	
5	E	5	

The following table lists non-polymeric compounds, carbohydrate monomers and non-standard residues in protein, DNA, RNA chains that are outliers for geometric or electron-density-fit criteria:

Mol	Type	Chain	Res	Chirality	Geometry	Clashes	Electron density
2	MAN	B	6	-	-	-	X

2 Entry composition [i](#)

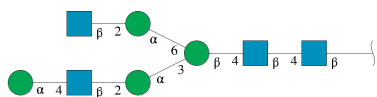
There are 8 unique types of molecules in this entry. The entry contains 3374 atoms, of which 0 are hydrogens and 0 are deuteriums.

In the tables below, the ZeroOcc column contains the number of atoms modelled with zero occupancy, the AltConf column contains the number of residues with at least one atom in alternate conformation and the Trace column contains the number of residues modelled with at most 2 atoms.

- Molecule 1 is a protein called Beta-2-glycoprotein 1.

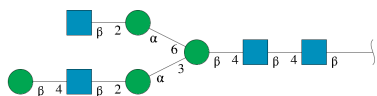
Mol	Chain	Residues	Atoms					ZeroOcc	AltConf	Trace
			Total	C	N	O	S			
1	A	326	2540	1621	419	474	26	0	0	0

- Molecule 2 is an oligosaccharide called alpha-D-mannopyranose-(1-4)-2-acetamido-2-deoxy-beta-D-glucopyranose-(1-2)-alpha-D-mannopyranose-(1-3)-[2-acetamido-2-deoxy-beta-D-glucopyranose-(1-2)-alpha-D-mannopyranose-(1-6)]beta-D-mannopyranose-(1-4)-2-acetamido-2-deoxy-beta-D-glucopyranose-(1-4)-2-acetamido-2-deoxy-beta-D-glucopyranose.



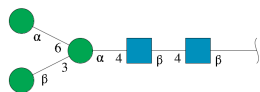
Mol	Chain	Residues	Atoms				ZeroOcc	AltConf	Trace
			Total	C	N	O			
2	B	8	100	56	4	40	0	0	0

- Molecule 3 is an oligosaccharide called beta-D-mannopyranose-(1-4)-2-acetamido-2-deoxy-beta-D-glucopyranose-(1-2)-alpha-D-mannopyranose-(1-3)-[2-acetamido-2-deoxy-beta-D-glucopyranose-(1-2)-alpha-D-mannopyranose-(1-6)]beta-D-mannopyranose-(1-4)-2-acetamido-2-deoxy-beta-D-glucopyranose-(1-4)-2-acetamido-2-deoxy-beta-D-glucopyranose.



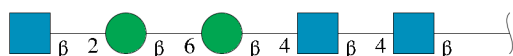
Mol	Chain	Residues	Atoms				ZeroOcc	AltConf	Trace
			Total	C	N	O			
3	C	8	100	56	4	40	0	0	0

- Molecule 4 is an oligosaccharide called beta-D-mannopyranose-(1-3)-[alpha-D-mannopyranose-(1-6)]alpha-D-mannopyranose-(1-4)-2-acetamido-2-deoxy-beta-D-glucopyranose-(1-4)-2-acetamido-2-deoxy-beta-D-glucopyranose.



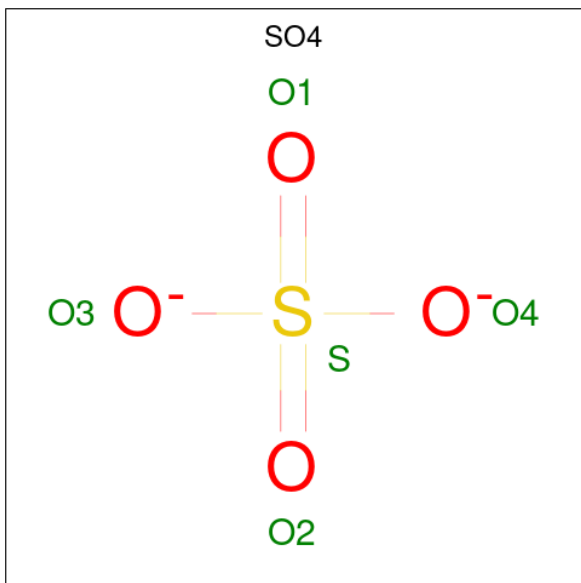
Mol	Chain	Residues	Atoms				ZeroOcc	AltConf	Trace
			Total	C	N	O			
4	D	5	61	34	2	25	0	0	0

- Molecule 5 is an oligosaccharide called 2-acetamido-2-deoxy-beta-D-glucopyranose-(1-2)-beta-D-mannopyranose-(1-6)-beta-D-mannopyranose-(1-4)-2-acetamido-2-deoxy-beta-D-glucopyranose-(1-4)-2-acetamido-2-deoxy-beta-D-glucopyranose.



Mol	Chain	Residues	Atoms				ZeroOcc	AltConf	Trace
			Total	C	N	O			
5	E	5	64	36	3	25	0	0	0

- Molecule 6 is SULFATE ION (CCD ID: SO4) (formula: O₄S).



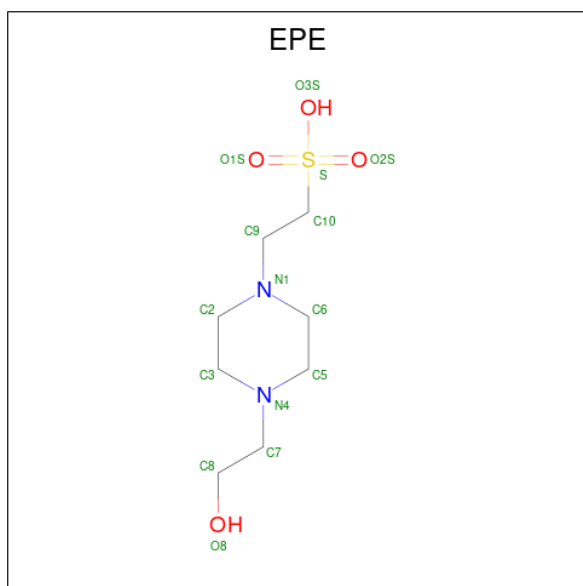
Mol	Chain	Residues	Atoms			ZeroOcc	AltConf
			Total	O	S		
6	A	1	5	4	1	0	0
6	A	1	5	4	1	0	0

Continued on next page...

Continued from previous page...

Mol	Chain	Residues	Atoms	ZeroOcc	AltConf
6	A	1	Total O S 5 4 1	0	0
6	A	1	Total O S 5 4 1	0	0
6	A	1	Total O S 5 4 1	0	0
6	A	1	Total O S 5 4 1	0	0
6	A	1	Total O S 5 4 1	0	0
6	A	1	Total O S 5 4 1	0	0
6	A	1	Total O S 5 4 1	0	0
6	A	1	Total O S 5 4 1	0	0
6	A	1	Total O S 5 4 1	0	0
6	A	1	Total O S 5 4 1	0	0
6	A	1	Total O S 5 4 1	0	0
6	A	1	Total O S 5 4 1	0	0
6	A	1	Total O S 5 4 1	0	0
6	A	1	Total O S 5 4 1	0	0
6	A	1	Total O S 5 4 1	0	0

- Molecule 7 is 4-(2-HYDROXYETHYL)-1-PIPERAZINE ETHANESULFONIC ACID (CCD ID: EPE) (formula: C₈H₁₈N₂O₄S).



Mol	Chain	Residues	Atoms					ZeroOcc	AltConf
			Total	C	N	O	S		
7	A	1	15	8	2	4	1	0	0

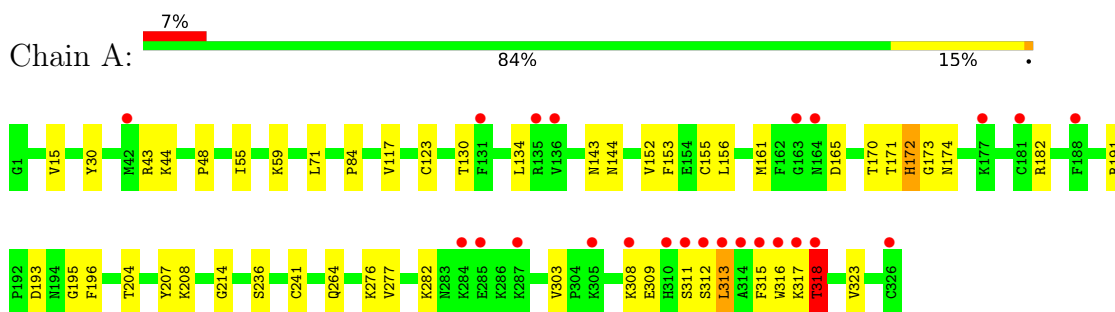
- Molecule 8 is water.

Mol	Chain	Residues	Atoms		ZeroOcc	AltConf
8	A	429	Total	O	0	0
			429	429		

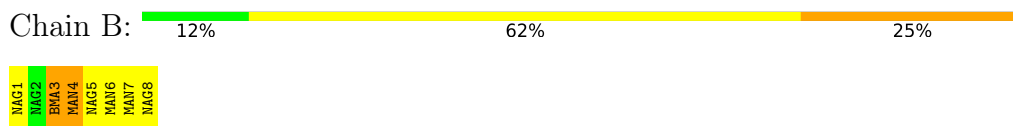
3 Residue-property plots [i](#)

These plots are drawn for all protein, RNA, DNA and oligosaccharide chains in the entry. The first graphic for a chain summarises the proportions of the various outlier classes displayed in the second graphic. The second graphic shows the sequence view annotated by issues in geometry and electron density. Residues are color-coded according to the number of geometric quality criteria for which they contain at least one outlier: green = 0, yellow = 1, orange = 2 and red = 3 or more. A red dot above a residue indicates a poor fit to the electron density ($RSRZ > 2$). Stretches of 2 or more consecutive residues without any outlier are shown as a green connector. Residues present in the sample, but not in the model, are shown in grey.

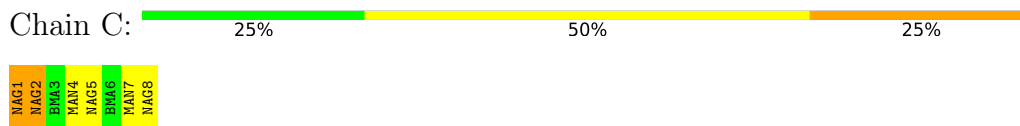
- Molecule 1: Beta-2-glycoprotein 1



- Molecule 2: alpha-D-mannopyranose-(1-4)-2-acetamido-2-deoxy-beta-D-glucopyranose-(1-2)-alpha-D-mannopyranose-(1-3)-[2-acetamido-2-deoxy-beta-D-glucopyranose-(1-2)-alpha-D-mannopyranose-(1-6)]beta-D-mannopyranose-(1-4)-2-acetamido-2-deoxy-beta-D-glucopyranose-(1-4)-2-acetamido-2-deoxy-beta-D-glucopyranose



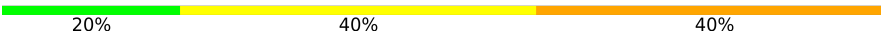
- Molecule 3: beta-D-mannopyranose-(1-4)-2-acetamido-2-deoxy-beta-D-glucopyranose-(1-2)-alpha-D-mannopyranose-(1-3)-[2-acetamido-2-deoxy-beta-D-glucopyranose-(1-2)-alpha-D-mannopyranose-(1-6)]beta-D-mannopyranose-(1-4)-2-acetamido-2-deoxy-beta-D-glucopyranose-(1-4)-2-acetamido-2-deoxy-beta-D-glucopyranose



- Molecule 4: beta-D-mannopyranose-(1-3)-[alpha-D-mannopyranose-(1-6)]alpha-D-mannopyranose-(1-4)-2-acetamido-2-deoxy-beta-D-glucopyranose-(1-4)-2-acetamido-2-deoxy-beta-D-glucopyranose



- Molecule 5: 2-acetamido-2-deoxy-beta-D-glucopyranose-(1-2)-beta-D-mannopyranose-(1-6)-beta-D-mannopyranose-(1-4)-2-acetamido-2-deoxy-beta-D-glucopyranose-(1-4)-2-acetamido-2-deoxy-beta-D-glucopyranose

Chain E:  20% 40% 40%



4 Data and refinement statistics i

Property	Value	Source
Space group	C 2 2 21	Depositor
Cell constants a, b, c, α , β , γ	160.84Å 166.94Å 114.05Å 90.00° 90.00° 90.00°	Depositor
Resolution (Å)	36.60 – 2.40 36.60 – 2.40	Depositor EDS
% Data completeness (in resolution range)	98.8 (36.60-2.40) 98.8 (36.60-2.40)	Depositor EDS
R_{merge}	0.08	Depositor
R_{sym}	(Not available)	Depositor
$\langle I/\sigma(I) \rangle$ ¹	2.32 (at 2.39Å)	Xtriage
Refinement program	REFMAC 5.8.0232	Depositor
R, R_{free}	0.201 , 0.236 0.212 , 0.243	Depositor DCC
R_{free} test set	2935 reflections (4.87%)	wwPDB-VP
Wilson B-factor (Å ²)	50.7	Xtriage
Anisotropy	0.108	Xtriage
Bulk solvent k_{sol} (e/Å ³), B_{sol} (Å ²)	0.32 , 52.3	EDS
L-test for twinning ²	$\langle L \rangle = 0.49$, $\langle L^2 \rangle = 0.32$	Xtriage
Estimated twinning fraction	0.014 for -k,-h,-l 0.000 for -1/2*h-1/2*k+1,-1/2*h-1/2*k-l,1/2 *h-1/2*k 0.000 for -1/2*h-1/2*k-l,-1/2*h-1/2*k+1,-1/ 2*h+1/2*k 0.000 for -1/2*h+1/2*k-l,1/2*h-1/2*k-l,-1/2 *h-1/2*k 0.000 for -1/2*h+1/2*k+1,1/2*h-1/2*k+1,1/ /2*h+1/2*k	Xtriage
F_o, F_c correlation	0.94	EDS
Total number of atoms	3374	wwPDB-VP
Average B, all atoms (Å ²)	77.0	wwPDB-VP

Xtriage's analysis on translational NCS is as follows: *The largest off-origin peak in the Patterson function is 4.33% of the height of the origin peak. No significant pseudotranslation is detected.*

¹Intensities estimated from amplitudes.

²Theoretical values of $\langle |L| \rangle$, $\langle L^2 \rangle$ for acentric reflections are 0.5, 0.333 respectively for untwinned datasets, and 0.375, 0.2 for perfectly twinned datasets.

5 Model quality

5.1 Standard geometry

Bond lengths and bond angles in the following residue types are not validated in this section: MAN, NAG, BMA, EPE, SO4

The Z score for a bond length (or angle) is the number of standard deviations the observed value is removed from the expected value. A bond length (or angle) with $|Z| > 5$ is considered an outlier worth inspection. RMSZ is the root-mean-square of all Z scores of the bond lengths (or angles).

Mol	Chain	Bond lengths		Bond angles	
		RMSZ	# Z >5	RMSZ	# Z >5
1	A	1.07	3/2617 (0.1%)	1.29	5/3555 (0.1%)

All (3) bond length outliers are listed below:

Mol	Chain	Res	Type	Atoms	Z	Observed(Å)	Ideal(Å)
1	A	172	HIS	C-N	6.49	1.42	1.33
1	A	173	GLY	C-N	-6.41	1.24	1.33
1	A	48	PRO	C-O	-5.31	1.17	1.23

All (5) bond angle outliers are listed below:

Mol	Chain	Res	Type	Atoms	Z	Observed(°)	Ideal(°)
1	A	143	ASN	CB-CA-C	-5.33	101.47	110.64
1	A	173	GLY	CA-C-N	5.14	131.45	122.81
1	A	173	GLY	C-N-CA	5.14	131.45	122.81
1	A	170	THR	CA-C-N	5.08	127.60	120.28
1	A	170	THR	C-N-CA	5.08	127.60	120.28

There are no chirality outliers.

There are no planarity outliers.

5.2 Too-close contacts

In the following table, the Non-H and H(model) columns list the number of non-hydrogen atoms and hydrogen atoms in the chain respectively. The H(added) column lists the number of hydrogen atoms added and optimized by MolProbity. The Clashes column lists the number of clashes within the asymmetric unit, whereas Symm-Clashes lists symmetry-related clashes.

Mol	Chain	Non-H	H(model)	H(added)	Clashes	Symm-Clashes
1	A	2540	0	2456	21	0
2	B	100	0	85	2	0
3	C	100	0	85	6	0
4	D	61	0	52	0	0
5	E	64	0	55	2	0
6	A	65	0	0	2	0
7	A	15	0	18	0	0
8	A	429	0	0	3	0
All	All	3374	0	2751	31	0

The all-atom clashscore is defined as the number of clashes found per 1000 atoms (including hydrogen atoms). The all-atom clashscore for this structure is 5.

All (31) close contacts within the same asymmetric unit are listed below, sorted by their clash magnitude.

Atom-1	Atom-2	Interatomic distance (Å)	Clash overlap (Å)
1:A:312:SER:O	1:A:313:LEU:HD12	1.71	0.90
3:C:1:NAG:H61	3:C:2:NAG:H82	1.55	0.89
3:C:1:NAG:H61	3:C:2:NAG:C8	2.09	0.82
3:C:1:NAG:C6	3:C:2:NAG:H82	2.11	0.80
2:B:3:BMA:O4	2:B:5:NAG:H82	1.88	0.74
1:A:313:LEU:HG	1:A:318:THR:CG2	2.23	0.69
1:A:313:LEU:HG	1:A:318:THR:HG23	1.79	0.64
8:A:786:HOH:O	2:B:4:MAN:H4	2.02	0.59
1:A:196:PHE:CZ	1:A:214:GLY:HA3	2.39	0.58
1:A:204:THR:HG22	6:A:430:SO4:O2	2.04	0.58
3:C:1:NAG:C6	3:C:2:NAG:C8	2.80	0.55
3:C:1:NAG:O6	3:C:2:NAG:H82	2.06	0.55
1:A:43:ARG:HD2	8:A:525:HOH:O	2.09	0.52
1:A:152:VAL:HA	1:A:165:ASP:O	2.13	0.48
1:A:191:ARG:NH2	1:A:195:GLY:O	2.47	0.48
8:A:757:HOH:O	5:E:1:NAG:H82	2.13	0.47
1:A:134:LEU:HD13	1:A:153:PHE:CE1	2.51	0.45
1:A:316:TRP:O	1:A:317:LYS:HG2	2.16	0.45
1:A:155:CYS:SG	1:A:161:MET:HB2	2.58	0.44
1:A:15:VAL:CG2	1:A:30:TYR:CE2	3.02	0.43
1:A:282:LYS:NZ	1:A:318:THR:O	2.36	0.43
1:A:317:LYS:HG3	1:A:323:VAL:CG2	2.49	0.43
1:A:317:LYS:HG3	1:A:323:VAL:HG22	2.02	0.42
1:A:123:CYS:O	1:A:144:ASN:HB3	2.19	0.42
1:A:172:HIS:HB2	1:A:174:ASN:OD1	2.20	0.42
1:A:207:TYR:CE2	1:A:208:LYS:HG2	2.55	0.42

Continued on next page...

Continued from previous page...

Atom-1	Atom-2	Interatomic distance (Å)	Clash overlap (Å)
1:A:44:LYS:N	6:A:436:SO4:O3	2.49	0.41
1:A:193:ASP:O	1:A:241:CYS:HB2	2.20	0.41
5:E:1:NAG:H61	5:E:2:NAG:HN2	1.86	0.41
1:A:153:PHE:O	1:A:165:ASP:HB2	2.21	0.40
3:C:1:NAG:C6	3:C:2:NAG:C7	2.99	0.40

There are no symmetry-related clashes.

5.3 Torsion angles [i](#)

5.3.1 Protein backbone [i](#)

In the following table, the Percentiles column shows the percent Ramachandran outliers of the chain as a percentile score with respect to all X-ray entries followed by that with respect to entries of similar resolution.

The Analysed column shows the number of residues for which the backbone conformation was analysed, and the total number of residues.

Mol	Chain	Analysed	Favoured	Allowed	Outliers	Percentiles
1	A	324/326 (99%)	301 (93%)	22 (7%)	1 (0%)	36 50

All (1) Ramachandran outliers are listed below:

Mol	Chain	Res	Type
1	A	318	THR

5.3.2 Protein sidechains [i](#)

In the following table, the Percentiles column shows the percent sidechain outliers of the chain as a percentile score with respect to all X-ray entries followed by that with respect to entries of similar resolution.

The Analysed column shows the number of residues for which the sidechain conformation was analysed, and the total number of residues.

Mol	Chain	Analysed	Rotameric	Outliers	Percentiles
1	A	286/286 (100%)	266 (93%)	20 (7%)	14 24

All (20) residues with a non-rotameric sidechain are listed below:

Mol	Chain	Res	Type
1	A	55	ILE
1	A	59	LYS
1	A	71	LEU
1	A	84	PRO
1	A	117	VAL
1	A	130	THR
1	A	156	LEU
1	A	171	THR
1	A	182	ARG
1	A	236	SER
1	A	264	GLN
1	A	276	LYS
1	A	277	VAL
1	A	303	VAL
1	A	308	LYS
1	A	309	GLU
1	A	311	SER
1	A	313	LEU
1	A	315	PHE
1	A	318	THR

Sometimes sidechains can be flipped to improve hydrogen bonding and reduce clashes. There are no such sidechains identified.

5.3.3 RNA [i](#)

There are no RNA molecules in this entry.

5.4 Non-standard residues in protein, DNA, RNA chains [i](#)

There are no non-standard protein/DNA/RNA residues in this entry.

5.5 Carbohydrates [i](#)

26 monosaccharides are modelled in this entry.

In the following table, the Counts columns list the number of bonds (or angles) for which Mogul statistics could be retrieved, the number of bonds (or angles) that are observed in the model and the number of bonds (or angles) that are defined in the Chemical Component Dictionary. The Link column lists molecule types, if any, to which the group is linked. The Z score for a bond length (or angle) is the number of standard deviations the observed value is removed from the

expected value. A bond length (or angle) with $|Z| > 2$ is considered an outlier worth inspection. RMSZ is the root-mean-square of all Z scores of the bond lengths (or angles).

Mol	Type	Chain	Res	Link	Bond lengths			Bond angles		
					Counts	RMSZ	# Z > 2	Counts	RMSZ	# Z > 2
2	NAG	B	1	1,2	14,14,15	0.68	0	17,19,21	1.00	1 (5%)
2	NAG	B	2	2	14,14,15	0.83	0	17,19,21	0.82	0
2	BMA	B	3	2	11,11,12	0.66	0	15,15,17	1.34	2 (13%)
2	MAN	B	4	2	11,11,12	0.35	0	15,15,17	1.00	1 (6%)
2	NAG	B	5	2	14,14,15	0.37	0	17,19,21	1.07	0
2	MAN	B	6	2	11,11,12	0.45	0	15,15,17	1.78	2 (13%)
2	MAN	B	7	2	11,11,12	0.59	0	15,15,17	1.71	4 (26%)
2	NAG	B	8	2	14,14,15	0.46	0	17,19,21	1.08	2 (11%)
3	NAG	C	1	1,3	14,14,15	0.44	0	17,19,21	1.28	1 (5%)
3	NAG	C	2	3	14,14,15	0.43	0	17,19,21	1.15	2 (11%)
3	BMA	C	3	3	11,11,12	0.44	0	15,15,17	0.56	0
3	MAN	C	4	3	11,11,12	0.42	0	15,15,17	1.05	1 (6%)
3	NAG	C	5	3	14,14,15	0.42	0	17,19,21	1.16	2 (11%)
3	BMA	C	6	3	11,11,12	0.40	0	15,15,17	0.66	0
3	MAN	C	7	3	11,11,12	0.83	0	15,15,17	1.63	3 (20%)
3	NAG	C	8	3	14,14,15	0.41	0	17,19,21	1.16	2 (11%)
4	NAG	D	1	1,4	14,14,15	0.26	0	17,19,21	2.55	2 (11%)
4	NAG	D	2	4	14,14,15	0.58	0	17,19,21	1.18	1 (5%)
4	MAN	D	3	4	11,11,12	0.62	0	15,15,17	1.67	3 (20%)
4	BMA	D	4	4	11,11,12	0.57	0	15,15,17	1.42	2 (13%)
4	MAN	D	5	4	11,11,12	0.58	0	15,15,17	0.92	0
5	NAG	E	1	1,5	14,14,15	0.68	0	17,19,21	1.00	1 (5%)
5	NAG	E	2	5	14,14,15	0.83	0	17,19,21	0.81	1 (5%)
5	BMA	E	3	5	11,11,12	0.63	0	15,15,17	1.33	1 (6%)
5	BMA	E	4	5	11,11,12	0.47	0	15,15,17	0.74	0
5	NAG	E	5	5	14,14,15	0.43	0	17,19,21	1.16	2 (11%)

In the following table, the Chirals column lists the number of chiral outliers, the number of chiral centers analysed, the number of these observed in the model and the number defined in the Chemical Component Dictionary. Similar counts are reported in the Torsion and Rings columns. ^{1,2} means no outliers of that kind were identified.

Mol	Type	Chain	Res	Link	Chirals	Torsions	Rings
2	NAG	B	1	1,2	-	0/6/23/26	0/1/1/1
2	NAG	B	2	2	-	2/6/23/26	0/1/1/1

Continued on next page...

Continued from previous page...

Mol	Type	Chain	Res	Link	Chirals	Torsions	Rings
2	BMA	B	3	2	-	2/2/19/22	0/1/1/1
2	MAN	B	4	2	-	1/2/19/22	0/1/1/1
2	NAG	B	5	2	-	0/6/23/26	0/1/1/1
2	MAN	B	6	2	-	2/2/19/22	0/1/1/1
2	MAN	B	7	2	-	1/2/19/22	0/1/1/1
2	NAG	B	8	2	-	2/6/23/26	0/1/1/1
3	NAG	C	1	1,3	-	2/6/23/26	0/1/1/1
3	NAG	C	2	3	-	0/6/23/26	0/1/1/1
3	BMA	C	3	3	-	0/2/19/22	0/1/1/1
3	MAN	C	4	3	-	1/2/19/22	0/1/1/1
3	NAG	C	5	3	-	0/6/23/26	0/1/1/1
3	BMA	C	6	3	-	2/2/19/22	0/1/1/1
3	MAN	C	7	3	-	1/2/19/22	0/1/1/1
3	NAG	C	8	3	-	0/6/23/26	0/1/1/1
4	NAG	D	1	1,4	-	0/6/23/26	0/1/1/1
4	NAG	D	2	4	-	2/6/23/26	0/1/1/1
4	MAN	D	3	4	-	1/2/19/22	0/1/1/1
4	BMA	D	4	4	-	2/2/19/22	0/1/1/1
4	MAN	D	5	4	-	2/2/19/22	0/1/1/1
5	NAG	E	1	1,5	-	0/6/23/26	0/1/1/1
5	NAG	E	2	5	-	3/6/23/26	0/1/1/1
5	BMA	E	3	5	-	2/2/19/22	0/1/1/1
5	BMA	E	4	5	-	2/2/19/22	0/1/1/1
5	NAG	E	5	5	-	0/6/23/26	0/1/1/1

There are no bond length outliers.

All (36) bond angle outliers are listed below:

Mol	Chain	Res	Type	Atoms	Z	Observed(°)	Ideal(°)
4	D	1	NAG	C1-O5-C5	9.32	124.67	112.19
2	B	6	MAN	C1-O5-C5	5.89	120.08	112.19
2	B	7	MAN	O2-C2-C3	4.70	119.89	110.15
4	D	3	MAN	C1-O5-C5	3.88	117.39	112.19
3	C	4	MAN	C1-O5-C5	3.67	117.10	112.19
3	C	7	MAN	O2-C2-C3	3.63	117.68	110.15
4	D	3	MAN	C3-C4-C5	3.54	116.65	110.23
5	E	3	BMA	C1-O5-C5	3.52	116.90	112.19
3	C	1	NAG	O5-C1-C2	-3.50	105.88	111.29
2	B	3	BMA	C1-C2-C3	3.47	114.69	109.64

Continued on next page...

Continued from previous page...

Mol	Chain	Res	Type	Atoms	Z	Observed(°)	Ideal(°)
4	D	4	BMA	C1-C2-C3	-3.38	104.72	109.64
3	C	7	MAN	C2-C3-C4	3.30	116.67	110.86
5	E	1	NAG	C2-N2-C7	-3.19	118.63	122.90
2	B	1	NAG	C2-N2-C7	-3.18	118.64	122.90
2	B	4	MAN	C1-O5-C5	3.04	116.25	112.19
3	C	7	MAN	C3-C4-C5	2.71	115.14	110.23
4	D	1	NAG	O5-C1-C2	2.58	115.28	111.29
4	D	2	NAG	C4-C3-C2	2.55	114.76	111.02
2	B	7	MAN	C1-O5-C5	2.55	115.60	112.19
2	B	7	MAN	O2-C2-C1	-2.46	103.58	109.22
3	C	8	NAG	C8-C7-N2	2.38	120.06	116.12
3	C	2	NAG	C8-C7-N2	2.36	120.03	116.12
3	C	5	NAG	C8-C7-N2	2.36	120.03	116.12
5	E	5	NAG	C8-C7-N2	2.35	120.02	116.12
2	B	6	MAN	C3-C4-C5	2.27	114.35	110.23
2	B	8	NAG	C4-C3-C2	2.27	114.34	111.02
4	D	4	BMA	O2-C2-C3	2.18	114.67	110.15
3	C	5	NAG	C2-N2-C7	-2.17	120.00	122.90
5	E	5	NAG	C2-N2-C7	-2.14	120.03	122.90
3	C	8	NAG	C2-N2-C7	-2.13	120.04	122.90
3	C	2	NAG	C2-N2-C7	-2.11	120.07	122.90
2	B	3	BMA	O5-C5-C4	-2.10	105.72	110.83
2	B	7	MAN	O3-C3-C2	2.06	114.25	110.05
4	D	3	MAN	O5-C5-C4	2.05	115.83	110.83
2	B	8	NAG	O5-C1-C2	-2.05	108.12	111.29
5	E	2	NAG	C2-N2-C7	-2.00	120.22	122.90

There are no chirality outliers.

All (30) torsion outliers are listed below:

Mol	Chain	Res	Type	Atoms
3	C	6	BMA	O5-C5-C6-O6
3	C	1	NAG	C4-C5-C6-O6
3	C	1	NAG	O5-C5-C6-O6
4	D	2	NAG	O5-C5-C6-O6
2	B	2	NAG	O5-C5-C6-O6
5	E	2	NAG	O5-C5-C6-O6
3	C	6	BMA	C4-C5-C6-O6
2	B	6	MAN	O5-C5-C6-O6
2	B	8	NAG	O5-C5-C6-O6
2	B	2	NAG	C4-C5-C6-O6
2	B	6	MAN	C4-C5-C6-O6

Continued on next page...

Continued from previous page...

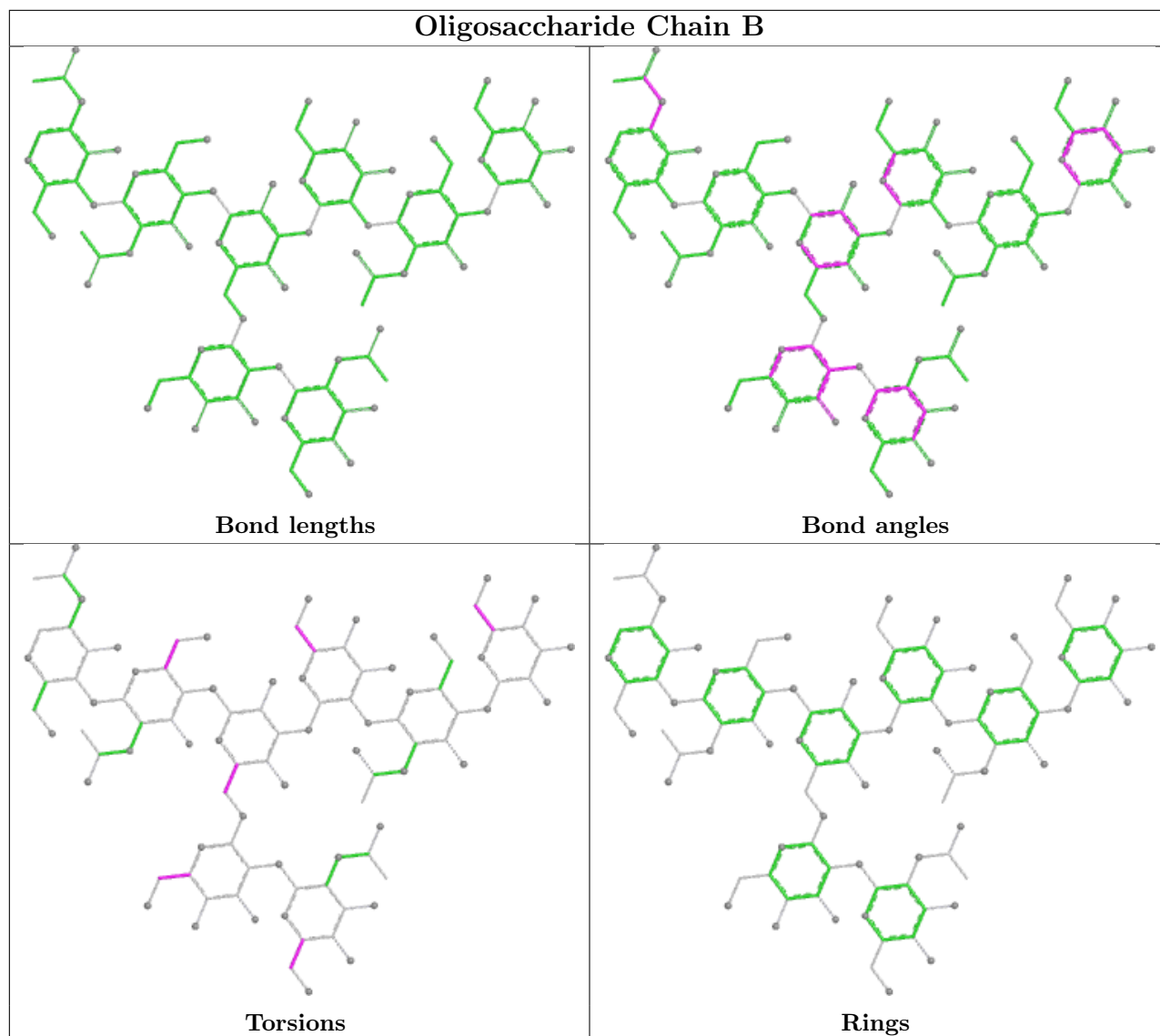
Mol	Chain	Res	Type	Atoms
2	B	8	NAG	C4-C5-C6-O6
5	E	2	NAG	C4-C5-C6-O6
5	E	3	BMA	C4-C5-C6-O6
4	D	2	NAG	C4-C5-C6-O6
2	B	3	BMA	C4-C5-C6-O6
5	E	3	BMA	O5-C5-C6-O6
5	E	4	BMA	C4-C5-C6-O6
2	B	7	MAN	O5-C5-C6-O6
2	B	3	BMA	O5-C5-C6-O6
4	D	4	BMA	C4-C5-C6-O6
5	E	4	BMA	O5-C5-C6-O6
2	B	4	MAN	O5-C5-C6-O6
4	D	5	MAN	C4-C5-C6-O6
3	C	4	MAN	O5-C5-C6-O6
3	C	7	MAN	O5-C5-C6-O6
4	D	3	MAN	C4-C5-C6-O6
4	D	5	MAN	O5-C5-C6-O6
4	D	4	BMA	O5-C5-C6-O6
5	E	2	NAG	C3-C2-N2-C7

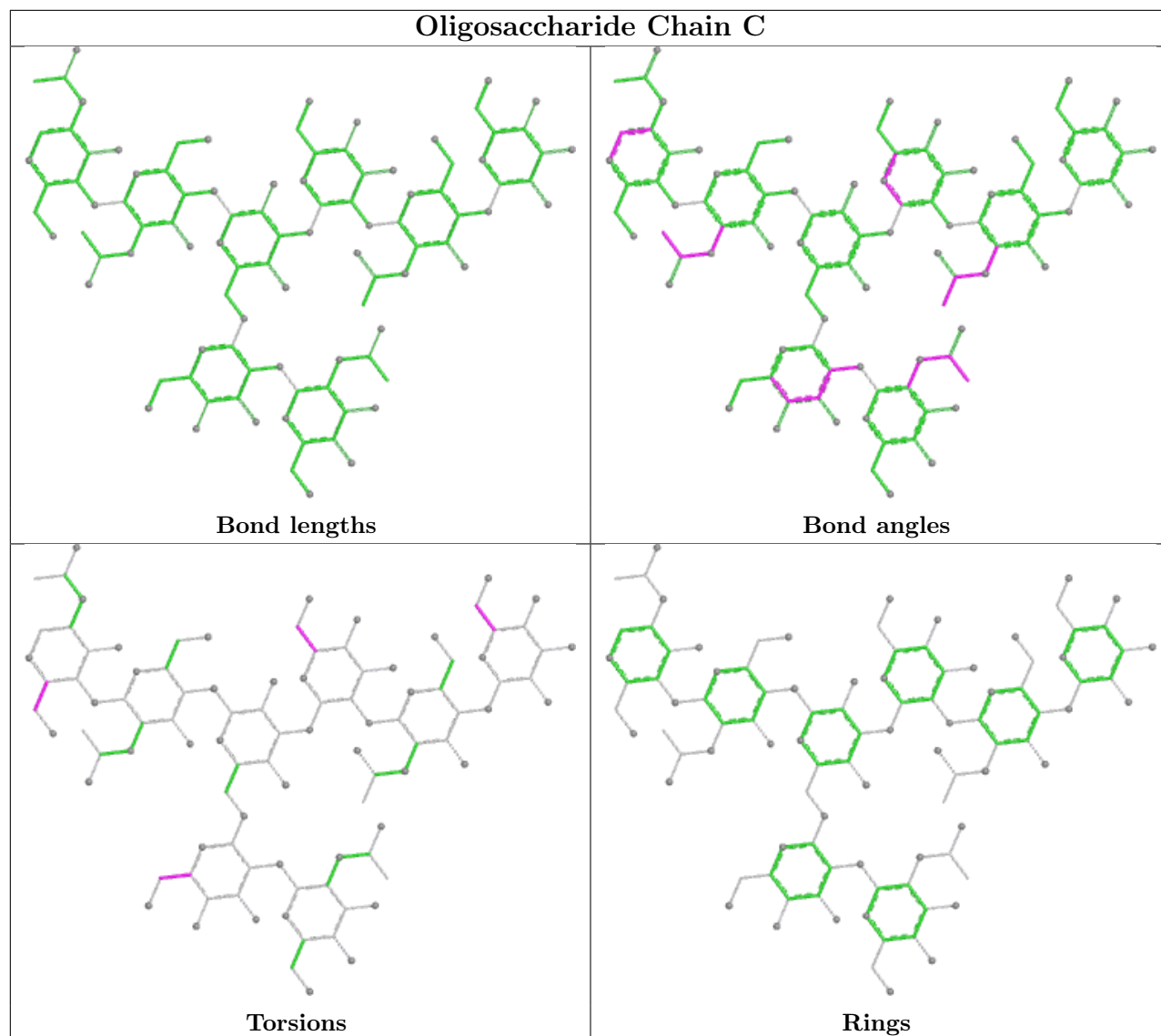
There are no ring outliers.

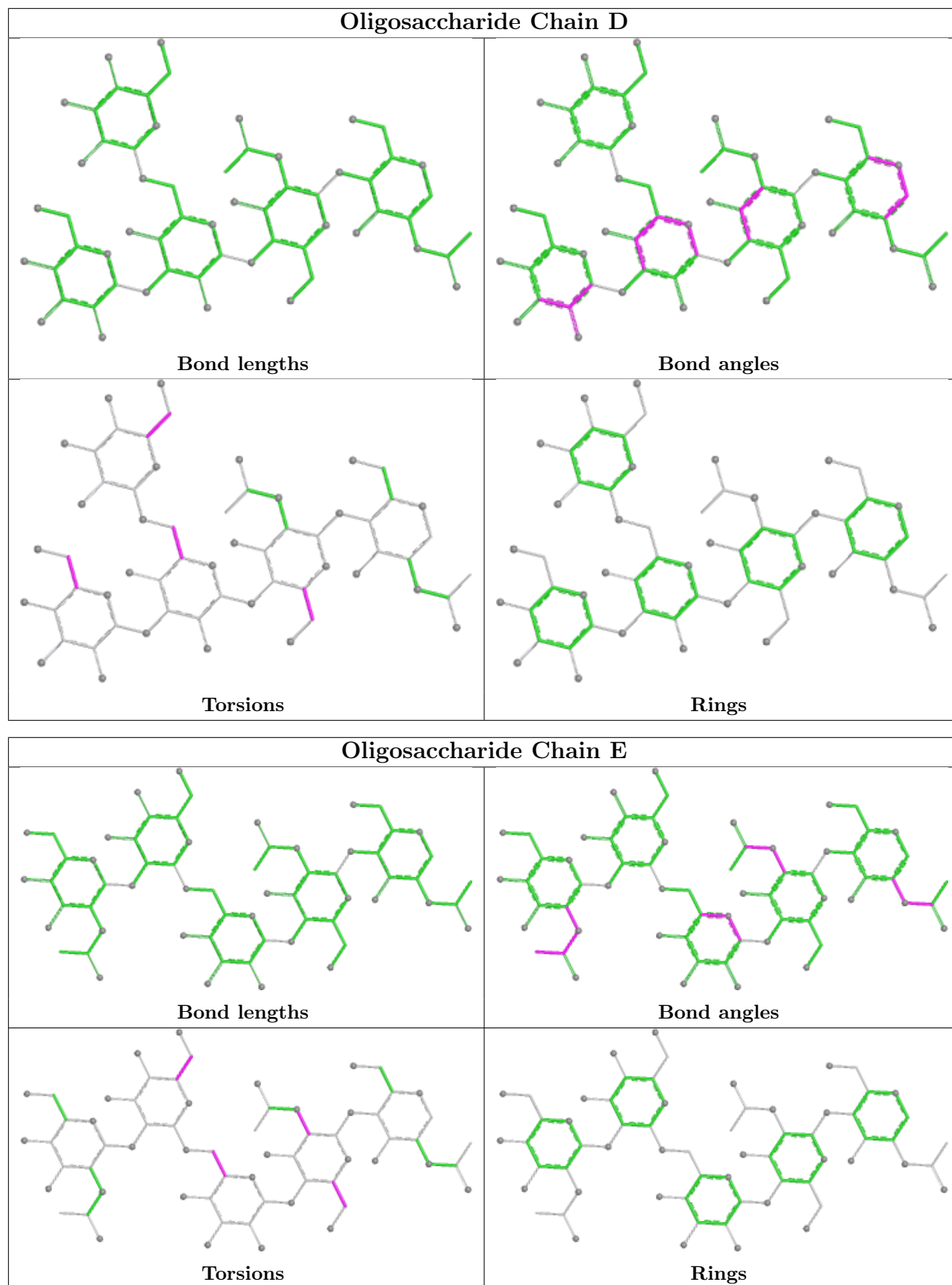
7 monomers are involved in 10 short contacts:

Mol	Chain	Res	Type	Clashes	Symm-Clashes
2	B	4	MAN	1	0
3	C	1	NAG	6	0
3	C	2	NAG	6	0
5	E	2	NAG	1	0
5	E	1	NAG	2	0
2	B	3	BMA	1	0
2	B	5	NAG	1	0

The following is a two-dimensional graphical depiction of Mogul quality analysis of bond lengths, bond angles, torsion angles, and ring geometry for oligosaccharide.







5.6 Ligand geometry

14 ligands are modelled in this entry.

In the following table, the Counts columns list the number of bonds (or angles) for which Mogul statistics could be retrieved, the number of bonds (or angles) that are observed in the model and the number of bonds (or angles) that are defined in the Chemical Component Dictionary. The Link column lists molecule types, if any, to which the group is linked. The Z score for a bond length (or angle) is the number of standard deviations the observed value is removed from the expected value. A bond length (or angle) with $|Z| > 2$ is considered an outlier worth inspection. RMSZ is the root-mean-square of all Z scores of the bond lengths (or angles).

Mol	Type	Chain	Res	Link	Bond lengths			Bond angles		
					Counts	RMSZ	# Z > 2	Counts	RMSZ	# Z > 2
6	SO4	A	427	-	4,4,4	0.33	0	6,6,6	0.26	0
6	SO4	A	434	-	4,4,4	0.28	0	6,6,6	0.09	0
6	SO4	A	438	-	4,4,4	0.28	0	6,6,6	0.19	0
6	SO4	A	439	-	4,4,4	0.31	0	6,6,6	0.10	0
6	SO4	A	428	-	4,4,4	0.24	0	6,6,6	0.15	0
7	EPE	A	440	-	15,15,15	1.99	1 (6%)	19,20,20	1.12	1 (5%)
6	SO4	A	436	-	4,4,4	0.34	0	6,6,6	0.13	0
6	SO4	A	432	-	4,4,4	0.30	0	6,6,6	0.12	0
6	SO4	A	435	-	4,4,4	0.31	0	6,6,6	0.07	0
6	SO4	A	431	-	4,4,4	0.32	0	6,6,6	0.09	0
6	SO4	A	429	-	4,4,4	0.22	0	6,6,6	0.22	0
6	SO4	A	433	-	4,4,4	0.32	0	6,6,6	0.07	0
6	SO4	A	430	-	4,4,4	0.28	0	6,6,6	0.15	0
6	SO4	A	437	-	4,4,4	0.29	0	6,6,6	0.08	0

In the following table, the Chirals column lists the number of chiral outliers, the number of chiral centers analysed, the number of these observed in the model and the number defined in the Chemical Component Dictionary. Similar counts are reported in the Torsion and Rings columns. '-' means no outliers of that kind were identified.

Mol	Type	Chain	Res	Link	Chirals	Torsions	Rings
7	EPE	A	440	-	-	4/9/19/19	0/1/1/1

All (1) bond length outliers are listed below:

Mol	Chain	Res	Type	Atoms	Z	Observed(Å)	Ideal(Å)
7	A	440	EPE	C10-S	-7.37	1.67	1.77

All (1) bond angle outliers are listed below:

Mol	Chain	Res	Type	Atoms	Z	Observed(°)	Ideal(°)
7	A	440	EPE	O2S-S-C10	2.50	110.51	106.73

There are no chirality outliers.

All (4) torsion outliers are listed below:

Mol	Chain	Res	Type	Atoms
7	A	440	EPE	C10-C9-N1-C2
7	A	440	EPE	C10-C9-N1-C6
7	A	440	EPE	S-C10-C9-N1
7	A	440	EPE	N4-C7-C8-O8

There are no ring outliers.

2 monomers are involved in 2 short contacts:

Mol	Chain	Res	Type	Clashes	Symm-Clashes
6	A	436	SO4	1	0
6	A	430	SO4	1	0

5.7 Other polymers [i](#)

There are no such residues in this entry.

5.8 Polymer linkage issues [i](#)

There are no chain breaks in this entry.

6 Fit of model and data

6.1 Protein, DNA and RNA chains

In the following table, the column labelled ‘#RSRZ> 2’ contains the number (and percentage) of RSRZ outliers, followed by percent RSRZ outliers for the chain as percentile scores relative to all X-ray entries and entries of similar resolution. The OWAB column contains the minimum, median, 95th percentile and maximum values of the occupancy-weighted average B-factor per residue. The column labelled ‘Q< 0.9’ lists the number of (and percentage) of residues with an average occupancy less than 0.9.

Mol	Chain	Analysed	<RSRZ>	#RSRZ>2	OWAB(Å ²)	Q<0.9
1	A	326/326 (100%)	0.40	24 (7%) 20 17	33, 56, 107, 197	0

All (24) RSRZ outliers are listed below:

Mol	Chain	Res	Type	RSRZ
1	A	315	PHE	10.9
1	A	316	TRP	9.3
1	A	313	LEU	8.5
1	A	314	ALA	7.3
1	A	317	LYS	6.9
1	A	163	GLY	5.5
1	A	318	THR	5.3
1	A	308	LYS	5.3
1	A	312	SER	4.7
1	A	310	HIS	4.3
1	A	164	ASN	3.6
1	A	311	SER	3.1
1	A	188	PHE	2.8
1	A	135	ARG	2.8
1	A	326	CYS	2.6
1	A	42	MET	2.6
1	A	284	LYS	2.4
1	A	136	VAL	2.4
1	A	287	LYS	2.4
1	A	305	LYS	2.3
1	A	181	CYS	2.3
1	A	177	LYS	2.2
1	A	285	GLU	2.1
1	A	131	PHE	2.1

6.2 Non-standard residues in protein, DNA, RNA chains [i](#)

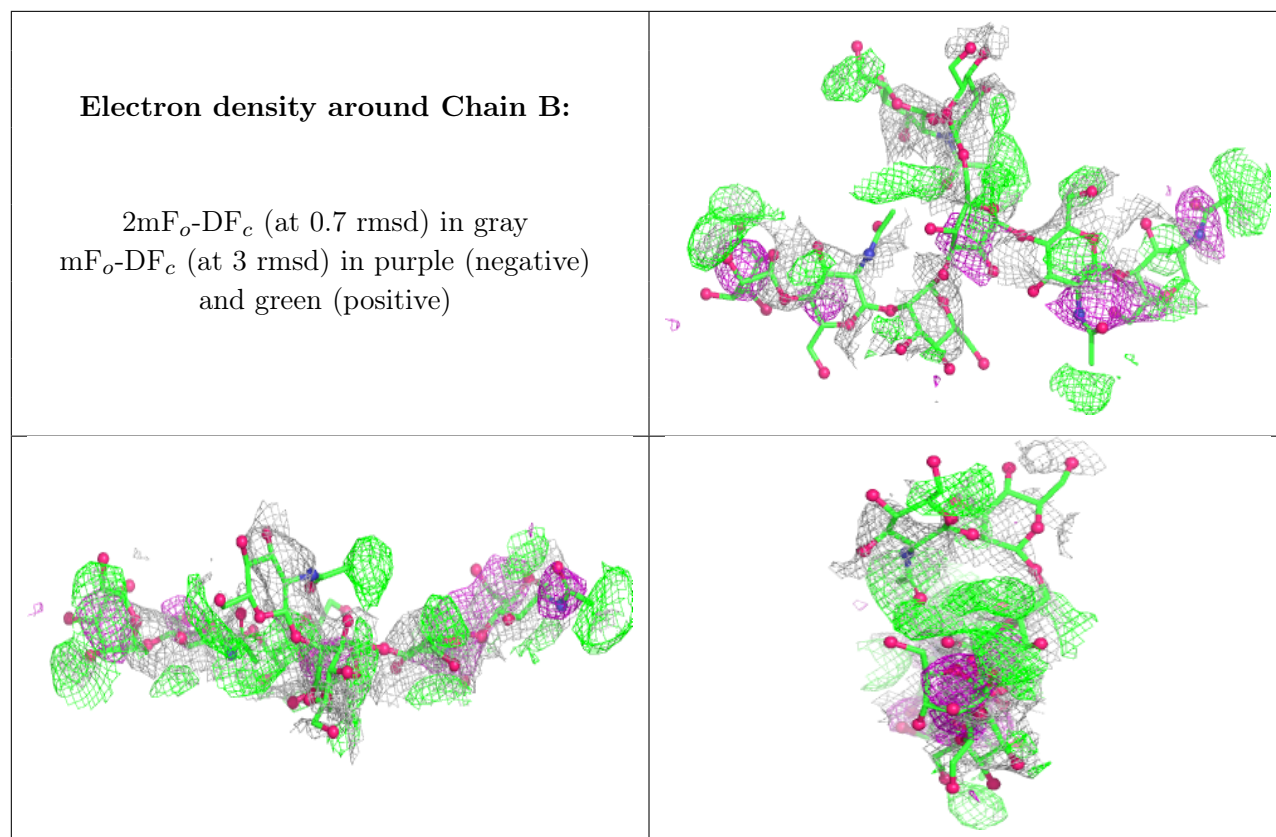
There are no non-standard protein/DNA/RNA residues in this entry.

6.3 Carbohydrates [i](#)

In the following table, the Atoms column lists the number of modelled atoms in the group and the number defined in the chemical component dictionary. The B-factors column lists the minimum, median, 95th percentile and maximum values of B factors of atoms in the group. The column labelled 'Q< 0.9' lists the number of atoms with occupancy less than 0.9.

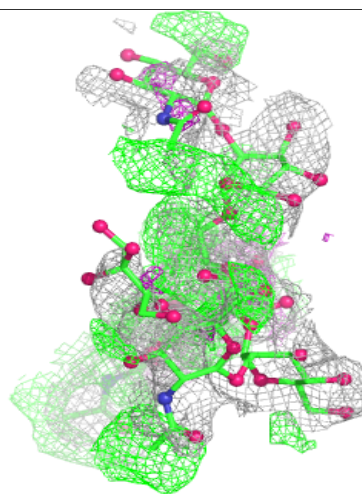
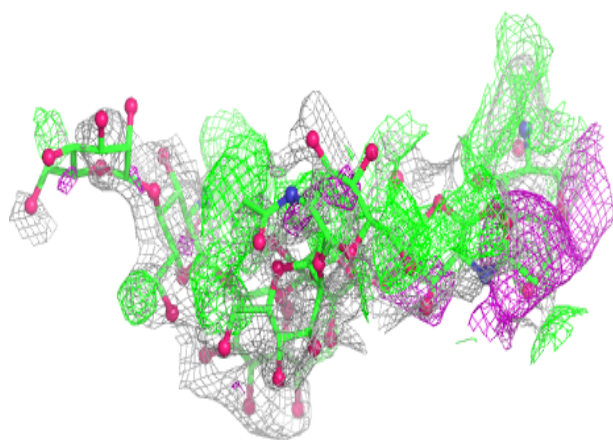
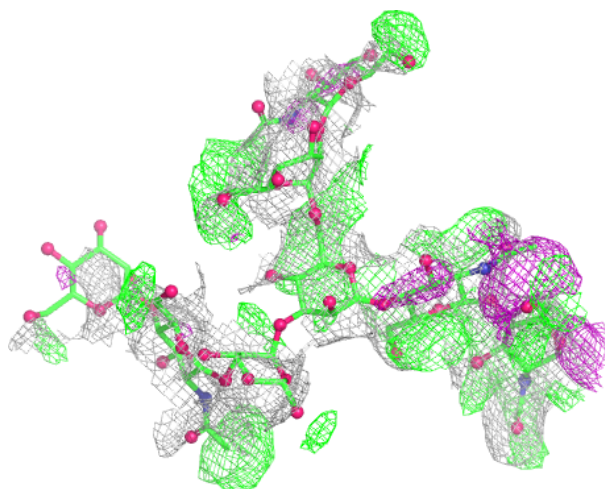
Mol	Type	Chain	Res	Atoms	RSCC	RSR	B-factors(Å ²)	Q<0.9
3	BMA	C	6	11/12	-0.06	0.28	163,201,212,218	0
3	MAN	C	7	11/12	-0.03	0.25	160,188,226,235	0
2	BMA	B	3	11/12	0.13	0.30	227,232,234,234	0
3	NAG	C	8	14/15	0.20	0.30	133,187,220,223	0
5	BMA	E	3	11/12	0.20	0.21	221,226,235,236	0
2	NAG	B	1	14/15	0.24	0.37	126,149,161,177	0
4	MAN	D	5	11/12	0.25	0.19	183,202,214,221	0
2	MAN	B	7	11/12	0.29	0.23	220,232,236,237	0
3	BMA	C	3	11/12	0.31	0.24	177,196,213,217	0
3	NAG	C	5	14/15	0.34	0.26	152,202,220,226	0
5	NAG	E	5	14/15	0.35	0.27	189,221,227,229	0
5	BMA	E	4	11/12	0.36	0.21	211,222,227,230	0
2	NAG	B	2	14/15	0.38	0.34	163,186,197,210	0
4	MAN	D	3	11/12	0.40	0.17	194,202,206,209	0
2	MAN	B	6	11/12	0.44	0.48	218,222,223,224	0
3	MAN	C	4	11/12	0.47	0.17	152,194,225,229	0
4	NAG	D	2	14/15	0.48	0.24	132,143,157,177	0
4	BMA	D	4	11/12	0.48	0.19	186,199,207,216	0
5	NAG	E	2	14/15	0.52	0.28	163,185,198,212	0
2	NAG	B	8	14/15	0.55	0.30	192,208,222,223	0
5	NAG	E	1	14/15	0.56	0.29	121,143,164,167	0
2	NAG	B	5	14/15	0.64	0.30	186,199,208,213	0
3	NAG	C	2	14/15	0.65	0.29	90,102,117,136	0
3	NAG	C	1	14/15	0.78	0.24	64,74,86,108	0
2	MAN	B	4	11/12	0.83	0.23	203,212,222,223	0
4	NAG	D	1	14/15	0.87	0.18	91,102,128,148	0

The following is a graphical depiction of the model fit to experimental electron density for oligosaccharide. Each fit is shown from different orientation to approximate a three-dimensional view.



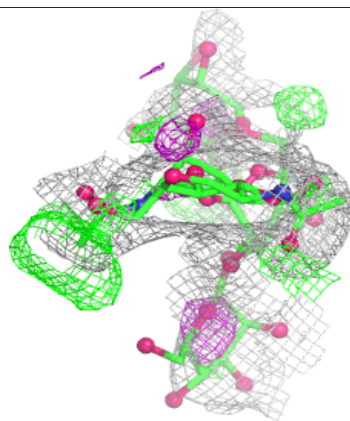
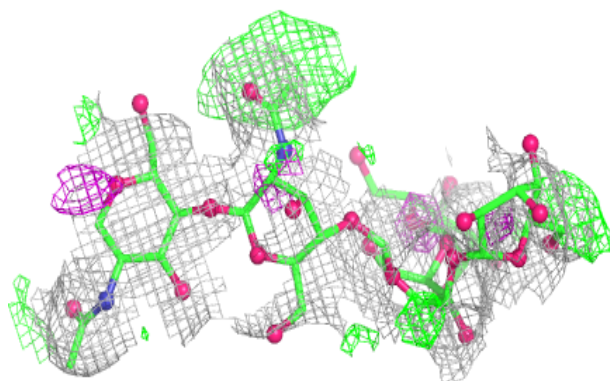
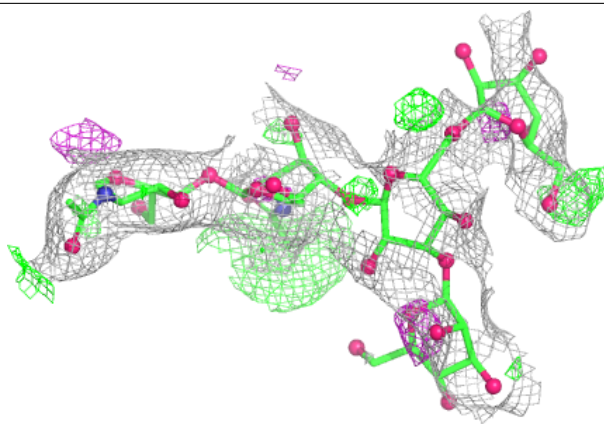
Electron density around Chain C:

$2mF_o-DF_c$ (at 0.7 rmsd) in gray
 mF_o-DF_c (at 3 rmsd) in purple (negative)
and green (positive)

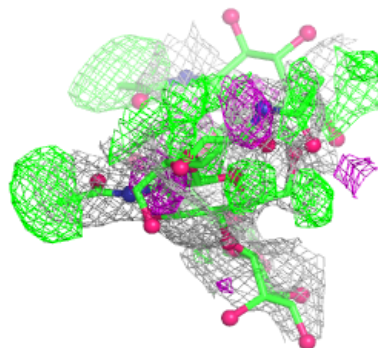
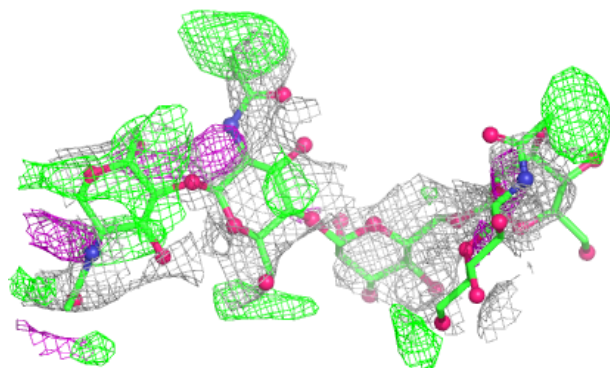
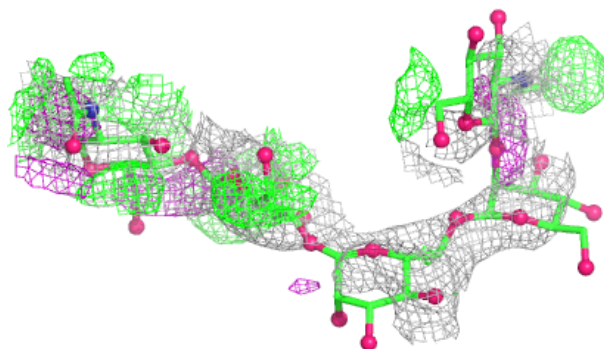


Electron density around Chain D:

$2mF_o-DF_c$ (at 0.7 rmsd) in gray
 mF_o-DF_c (at 3 rmsd) in purple (negative)
and green (positive)

**Electron density around Chain E:**

$2mF_o-DF_c$ (at 0.7 rmsd) in gray
 mF_o-DF_c (at 3 rmsd) in purple (negative)
and green (positive)



6.4 Ligands [i](#)

In the following table, the Atoms column lists the number of modelled atoms in the group and the number defined in the chemical component dictionary. The B-factors column lists the minimum, median, 95th percentile and maximum values of B factors of atoms in the group. The column labelled 'Q< 0.9' lists the number of atoms with occupancy less than 0.9.

Mol	Type	Chain	Res	Atoms	RSCC	RSR	B-factors(Å ²)	Q<0.9
6	SO4	A	435	5/5	0.54	0.15	158,162,170,179	0
6	SO4	A	439	5/5	0.68	0.14	157,162,185,189	0
6	SO4	A	433	5/5	0.69	0.11	175,178,181,187	0
6	SO4	A	431	5/5	0.71	0.12	150,170,174,175	0
6	SO4	A	432	5/5	0.74	0.15	112,132,144,161	0
6	SO4	A	436	5/5	0.78	0.16	124,162,177,178	0
6	SO4	A	437	5/5	0.80	0.15	131,156,161,173	0
7	EPE	A	440	15/15	0.84	0.23	96,134,180,196	0
6	SO4	A	434	5/5	0.85	0.18	122,124,146,152	0
6	SO4	A	428	5/5	0.85	0.16	106,126,136,146	0
6	SO4	A	430	5/5	0.87	0.19	119,133,165,168	0
6	SO4	A	427	5/5	0.88	0.11	74,80,97,123	0
6	SO4	A	429	5/5	0.89	0.18	84,99,132,143	0
6	SO4	A	438	5/5	0.93	0.13	102,127,131,144	0

6.5 Other polymers [i](#)

There are no such residues in this entry.