



# Full wwPDB X-ray Structure Validation Report ⓘ

Mar 10, 2026 – 08:48 AM UTC

PDB ID : 6UZK / pdb\_00006uzk  
Title : Crystal Structure of the Ternary Complex of KRIT1 bound to both the Rap1 GTPase and HKi6  
Authors : Gingras, A.R.  
Deposited on : 2019-11-15  
Resolution : 1.92 Å(reported)

This is a Full wwPDB X-ray Structure Validation Report for a publicly released PDB entry.

We welcome your comments at [validation@mail.wwpdb.org](mailto:validation@mail.wwpdb.org)

A user guide is available at

<https://www.wwpdb.org/validation/2017/XrayValidationReportHelp>

with specific help available everywhere you see the ⓘ symbol.

The types of validation reports are described at

<http://www.wwpdb.org/validation/2017/FAQs#types>.

---

The following versions of software and data (see [references ⓘ](#)) were used in the production of this report:

MolProbity : 4-5-2 with Phenix2.0  
Mogul : 2022.3.0, CSD as543be (2022)  
Xtrriage (Phenix) : 2.0  
EDS : 3.0  
Buster-report : wwPDB partial adaption of 1.1.7 (2018)  
Percentile statistics : 20250101.v01 (using entries in the PDB archive January 1st 2025)  
CCP4 : 9.0.010 (Gargrove)  
Density-Fitness : 1.0.12  
Ideal geometry (proteins) : Engh & Huber (2001)  
Ideal geometry (DNA, RNA) : Parkinson et al. (1996)  
Validation Pipeline (wwPDB-VP) : 2.49

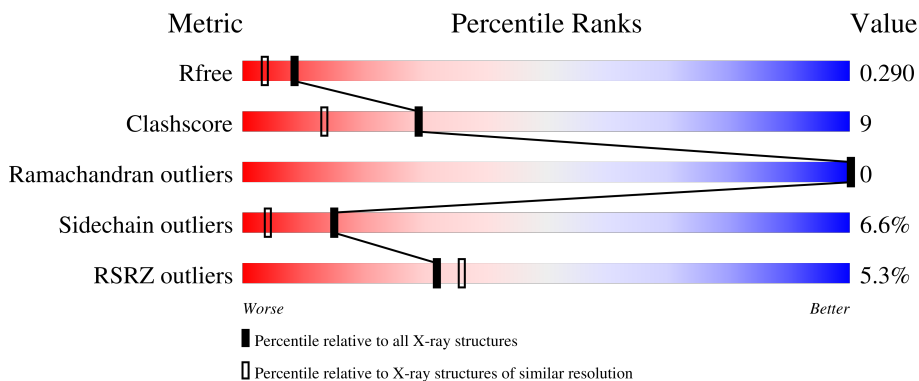
# 1 Overall quality at a glance

The following experimental techniques were used to determine the structure:

*X-RAY DIFFRACTION*

The reported resolution of this entry is 1.92 Å.

Percentile scores (ranging between 0-100) for global validation metrics of the entry are shown in the following graphic. The table shows the number of entries on which the scores are based.



Metric	Whole archive (#Entries)	Similar resolution (#Entries, resolution range(Å))
$R_{free}$	180053	1188 (1.92-1.92)
Clashscore	190562	1209 (1.92-1.92)
Ramachandran outliers	187476	1195 (1.92-1.92)
Sidechain outliers	187428	1195 (1.92-1.92)
RSRZ outliers	180081	1188 (1.92-1.92)

The table below summarises the geometric issues observed across the polymeric chains and their fit to the electron density. The red, orange, yellow and green segments of the lower bar indicate the fraction of residues that contain outliers for  $\geq 3$ , 2, 1 and 0 types of geometric quality criteria respectively. A grey segment represents the fraction of residues that are not modelled. The numeric value for each fraction is indicated below the corresponding segment, with a dot representing fractions  $\leq 5\%$ . The upper red bar (where present) indicates the fraction of residues that have poor fit to the electron density. The numeric value is given above the bar.

Mol	Chain	Length	Quality of chain
1	A	322	 5% (poor fit), 77% (0-1 outliers), 16% (2-3 outliers), 5% (not modelled)
2	B	167	 6% (poor fit), 78% (0-1 outliers), 17% (2-3 outliers), 2% (not modelled)

## 2 Entry composition i

There are 6 unique types of molecules in this entry. The entry contains 3942 atoms, of which 0 are hydrogens and 0 are deuteriums.

In the tables below, the ZeroOcc column contains the number of atoms modelled with zero occupancy, the AltConf column contains the number of residues with at least one atom in alternate conformation and the Trace column contains the number of residues modelled with at most 2 atoms.

- Molecule 1 is a protein called Krev interaction trapped protein 1.

Mol	Chain	Residues	Atoms					ZeroOcc	AltConf	Trace
			Total	C	N	O	S			
1	A	307	2522	1628	430	449	15	0	1	0

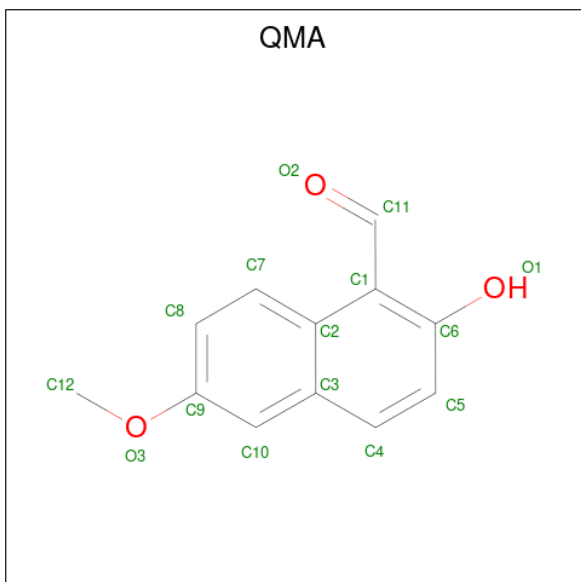
There are 2 discrepancies between the modelled and reference sequences:

Chain	Residue	Modelled	Actual	Comment	Reference
A	415	GLY	-	expression tag	UNP O00522
A	416	ALA	-	expression tag	UNP O00522

- Molecule 2 is a protein called Ras-related protein Rap-1b.

Mol	Chain	Residues	Atoms					ZeroOcc	AltConf	Trace
			Total	C	N	O	S			
2	B	163	1297	811	223	256	7	0	1	0

- Molecule 3 is 2-hydroxy-6-methoxynaphthalene-1-carbaldehyde (CCD ID: QMA) (formula: C<sub>12</sub>H<sub>10</sub>O<sub>3</sub>) (labeled as "Ligand of Interest" by depositor).

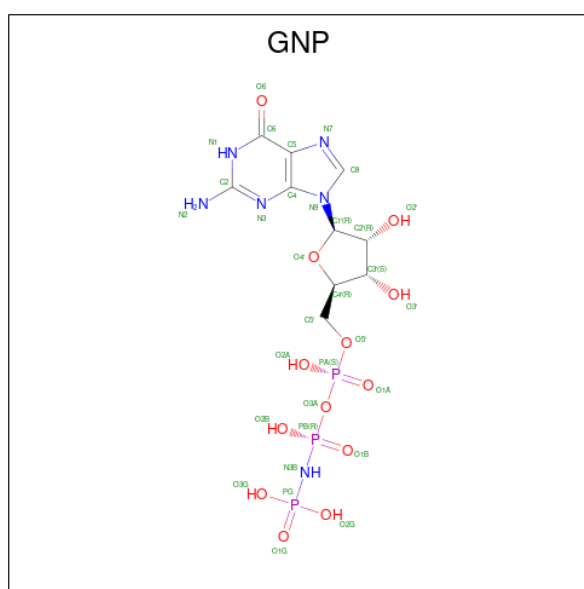


Mol	Chain	Residues	Atoms			ZeroOcc	AltConf
3	A	1	Total	C	O	0	0
			15	12	3		

- Molecule 4 is MAGNESIUM ION (CCD ID: MG) (formula: Mg).

Mol	Chain	Residues	Atoms		ZeroOcc	AltConf
4	B	1	Total	Mg	0	0
			1	1		

- Molecule 5 is PHOSPHOAMINOPHOSPHONIC ACID-GUANYLATE ESTER (CCD ID: GNP) (formula: C<sub>10</sub>H<sub>17</sub>N<sub>6</sub>O<sub>13</sub>P<sub>3</sub>).



Mol	Chain	Residues	Atoms					ZeroOcc	AltConf
5	B	1	Total	C	N	O	P	0	0
			32	10	6	13	3		

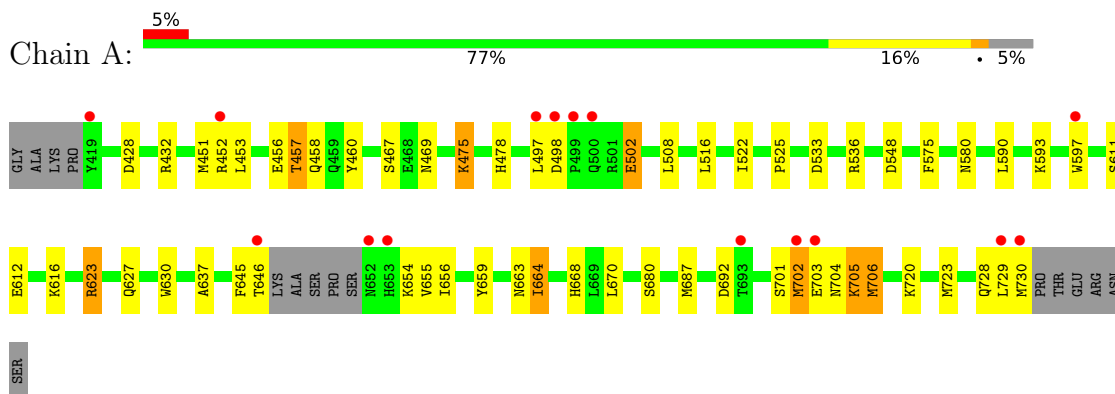
- Molecule 6 is water.

Mol	Chain	Residues	Atoms		ZeroOcc	AltConf
6	A	53	Total	O	0	0
			53	53		
6	B	22	Total	O	0	0
			22	22		

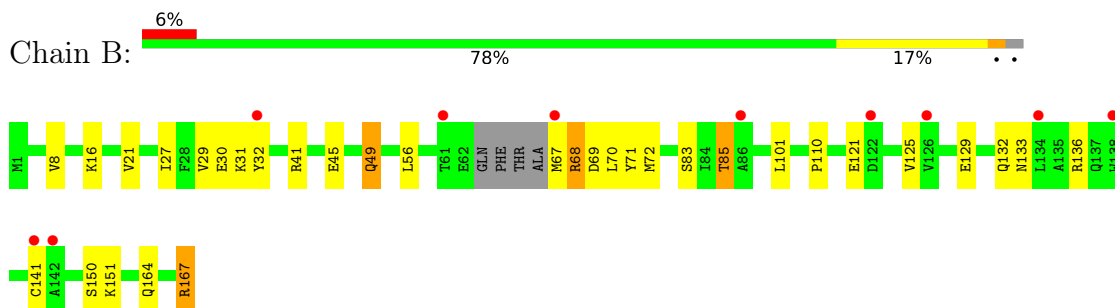
### 3 Residue-property plots [i](#)

These plots are drawn for all protein, RNA, DNA and oligosaccharide chains in the entry. The first graphic for a chain summarises the proportions of the various outlier classes displayed in the second graphic. The second graphic shows the sequence view annotated by issues in geometry and electron density. Residues are color-coded according to the number of geometric quality criteria for which they contain at least one outlier: green = 0, yellow = 1, orange = 2 and red = 3 or more. A red dot above a residue indicates a poor fit to the electron density ( $RSRZ > 2$ ). Stretches of 2 or more consecutive residues without any outlier are shown as a green connector. Residues present in the sample, but not in the model, are shown in grey.

- Molecule 1: Krev interaction trapped protein 1



- Molecule 2: Ras-related protein Rap-1b



## 4 Data and refinement statistics i

Property	Value	Source
Space group	P 1 21 1	Depositor
Cell constants a, b, c, $\alpha$ , $\beta$ , $\gamma$	57.20Å 77.09Å 58.41Å 90.00° 91.56° 90.00°	Depositor
Resolution (Å)	36.51 – 1.92 36.51 – 1.92	Depositor EDS
% Data completeness (in resolution range)	93.7 (36.51-1.92) 93.7 (36.51-1.92)	Depositor EDS
$R_{merge}$	(Not available)	Depositor
$R_{sym}$	(Not available)	Depositor
$\langle I/\sigma(I) \rangle$ <sup>1</sup>	1.55 (at 1.92Å)	Xtrriage
Refinement program	REFMAC 5.8.0257	Depositor
R, $R_{free}$	0.220 , 0.286 0.222 , 0.290	Depositor DCC
$R_{free}$ test set	1773 reflections (4.60%)	wwPDB-VP
Wilson B-factor (Å <sup>2</sup> )	38.4	Xtrriage
Anisotropy	0.123	Xtrriage
Bulk solvent $k_{sol}$ (e/Å <sup>3</sup> ), $B_{sol}$ (Å <sup>2</sup> )	0.34 , 28.1	EDS
L-test for twinning <sup>2</sup>	$\langle  L  \rangle = 0.49$ , $\langle L^2 \rangle = 0.33$	Xtrriage
Estimated twinning fraction	0.005 for l,k,-h 0.036 for h,-k,-l 0.028 for l,-k,h	Xtrriage
$F_o, F_c$ correlation	0.96	EDS
Total number of atoms	3942	wwPDB-VP
Average B, all atoms (Å <sup>2</sup> )	48.0	wwPDB-VP

Xtrriage's analysis on translational NCS is as follows: *The largest off-origin peak in the Patterson function is 6.86% of the height of the origin peak. No significant pseudotranslation is detected.*

<sup>1</sup>Intensities estimated from amplitudes.

<sup>2</sup>Theoretical values of  $\langle |L| \rangle$ ,  $\langle L^2 \rangle$  for acentric reflections are 0.5, 0.333 respectively for untwinned datasets, and 0.375, 0.2 for perfectly twinned datasets.

## 5 Model quality [i](#)

### 5.1 Standard geometry [i](#)

Bond lengths and bond angles in the following residue types are not validated in this section: MG, GNP, QMA

The Z score for a bond length (or angle) is the number of standard deviations the observed value is removed from the expected value. A bond length (or angle) with  $|Z| > 5$  is considered an outlier worth inspection. RMSZ is the root-mean-square of all Z scores of the bond lengths (or angles).

Mol	Chain	Bond lengths		Bond angles	
		RMSZ	# Z  >5	RMSZ	# Z  >5
1	A	0.41	0/2582	0.92	2/3488 (0.1%)
2	B	0.40	0/1314	0.95	2/1770 (0.1%)
All	All	0.41	0/3896	0.93	4/5258 (0.1%)

There are no bond length outliers.

All (4) bond angle outliers are listed below:

Mol	Chain	Res	Type	Atoms	Z	Observed(°)	Ideal(°)
1	A	457	THR	CB-CA-C	5.59	119.54	110.37
1	A	536	ARG	CG-CD-NE	-5.32	100.30	112.00
2	B	67	MET	CA-C-N	5.02	127.25	120.38
2	B	67	MET	C-N-CA	5.02	127.25	120.38

There are no chirality outliers.

There are no planarity outliers.

### 5.2 Too-close contacts [i](#)

In the following table, the Non-H and H(model) columns list the number of non-hydrogen atoms and hydrogen atoms in the chain respectively. The H(added) column lists the number of hydrogen atoms added and optimized by MolProbity. The Clashes column lists the number of clashes within the asymmetric unit, whereas Symm-Clashes lists symmetry-related clashes.

Mol	Chain	Non-H	H(model)	H(added)	Clashes	Symm-Clashes
1	A	2522	0	2563	50	0
2	B	1297	0	1284	19	0
3	A	15	0	0	0	0
4	B	1	0	0	0	0
5	B	32	0	13	2	0

*Continued on next page...*

*Continued from previous page...*

Mol	Chain	Non-H	H(model)	H(added)	Clashes	Symm-Clashes
6	A	53	0	0	0	0
6	B	22	0	0	0	0
All	All	3942	0	3860	67	0

The all-atom clashscore is defined as the number of clashes found per 1000 atoms (including hydrogen atoms). The all-atom clashscore for this structure is 9.

All (67) close contacts within the same asymmetric unit are listed below, sorted by their clash magnitude.

Atom-1	Atom-2	Interatomic distance (Å)	Clash overlap (Å)
1:A:646:THR:CG2	1:A:656:ILE:HD11	2.04	0.87
1:A:701:SER:HB3	1:A:706:MET:HE2	1.56	0.87
1:A:452:ARG:O	1:A:452:ARG:HG2	1.77	0.85
1:A:475:LYS:H	1:A:478:HIS:CD2	1.98	0.81
1:A:668:HIS:HD2	1:A:680:SER:OG	1.67	0.78
1:A:475:LYS:H	1:A:478:HIS:HD2	1.37	0.72
1:A:452:ARG:O	1:A:452:ARG:CG	2.40	0.70
1:A:646:THR:CG2	1:A:656:ILE:CD1	2.71	0.67
1:A:469:ASN:HB2	1:A:497:LEU:HD13	1.78	0.65
1:A:720:LYS:HA	1:A:723:MET:HE2	1.80	0.64
2:B:32:TYR:CD1	5:B:201:GNP:H5'1	2.33	0.64
1:A:456:GLU:O	1:A:456:GLU:HG2	1.98	0.63
1:A:637:ALA:HA	1:A:663:ASN:HB3	1.83	0.59
2:B:32:TYR:HD1	5:B:201:GNP:H5'1	1.69	0.57
1:A:668:HIS:CD2	1:A:680:SER:OG	2.54	0.57
1:A:611:SER:O	1:A:616:LYS:NZ	2.38	0.56
2:B:164:GLN:O	2:B:167:ARG:HG2	2.06	0.56
1:A:646:THR:HG23	1:A:656:ILE:CD1	2.35	0.55
2:B:129:GLU:HA	2:B:132:GLN:OE1	2.06	0.55
1:A:575:PHE:O	1:A:580:ASN:ND2	2.33	0.55
1:A:664:ILE:H	1:A:664:ILE:HD13	1.74	0.53
2:B:56:LEU:HD21	2:B:71:TYR:CD1	2.44	0.53
1:A:646:THR:HG22	1:A:656:ILE:CD1	2.39	0.52
1:A:646:THR:HG22	1:A:656:ILE:HD11	1.86	0.52
1:A:432:ARG:CZ	1:A:452:ARG:HB3	2.40	0.52
1:A:623:ARG:HE	1:A:627:GLN:HE21	1.57	0.52
1:A:687:MET:HE2	1:A:702:MET:HG2	1.94	0.49
1:A:645:PHE:CE2	1:A:655:VAL:HG22	2.48	0.49
1:A:469:ASN:HB2	1:A:497:LEU:CD1	2.42	0.48
1:A:705:LYS:N	1:A:705:LYS:HD3	2.30	0.47
1:A:453:LEU:HB3	1:A:457:THR:HB	1.97	0.46

*Continued on next page...*

*Continued from previous page...*

Atom-1	Atom-2	Interatomic distance (Å)	Clash overlap (Å)
1:A:428:ASP:HB3	1:A:533[A]:ASP:OD1	2.16	0.45
1:A:453:LEU:HB2	1:A:458:GLN:HG3	1.98	0.45
1:A:646:THR:HG23	1:A:656:ILE:HD11	1.90	0.44
2:B:45:GLU:HA	2:B:49:GLN:O	2.17	0.44
1:A:432:ARG:NH1	1:A:452:ARG:HB3	2.32	0.44
1:A:663:ASN:OD1	1:A:668:HIS:HE1	2.00	0.44
2:B:83:SER:OG	2:B:85:THR:HB	2.18	0.44
1:A:469:ASN:HD22	1:A:497:LEU:HD22	1.82	0.44
2:B:83:SER:C	2:B:85:THR:H	2.25	0.44
1:A:627:GLN:HA	1:A:630:TRP:CE3	2.52	0.44
1:A:706:MET:HE2	1:A:706:MET:HB3	1.72	0.43
1:A:432:ARG:NH2	1:A:452:ARG:HD2	2.33	0.43
2:B:68:ARG:HG3	2:B:72:MET:HE3	2.00	0.43
2:B:132:GLN:O	2:B:136:ARG:HG2	2.19	0.43
1:A:701:SER:CB	1:A:706:MET:HE2	2.39	0.43
1:A:664:ILE:H	1:A:664:ILE:CD1	2.31	0.43
1:A:701:SER:HB3	1:A:706:MET:HB3	2.00	0.43
2:B:110:PRO:HA	2:B:164:GLN:OE1	2.19	0.42
1:A:637:ALA:CA	1:A:663:ASN:HB3	2.48	0.42
2:B:129:GLU:O	2:B:133:ASN:HB2	2.19	0.42
1:A:593:LYS:HB3	1:A:597:TRP:CZ2	2.55	0.42
1:A:451:MET:HE2	1:A:508:LEU:HD22	2.02	0.41
2:B:21:VAL:HG11	2:B:29:VAL:HG23	2.02	0.41
1:A:664:ILE:HD13	1:A:664:ILE:N	2.35	0.41
2:B:8:VAL:HG12	2:B:16:LYS:HG2	2.02	0.41
1:A:525:PRO:HB2	2:B:27:ILE:HD11	2.02	0.41
2:B:150:SER:O	2:B:151:LYS:HB2	2.21	0.41
1:A:467:SER:HB2	1:A:502:GLU:HB3	2.02	0.41
1:A:612:GLU:H	1:A:612:GLU:HG2	1.68	0.41
1:A:428:ASP:O	2:B:41:ARG:HD3	2.21	0.41
1:A:659:TYR:HB2	1:A:670:LEU:HB2	2.02	0.41
2:B:56:LEU:HD21	2:B:71:TYR:CE1	2.56	0.41
1:A:516:LEU:HD12	1:A:516:LEU:HA	1.87	0.41
1:A:460:TYR:CZ	1:A:522:ILE:HG12	2.56	0.40
1:A:702:MET:H	1:A:702:MET:HG3	1.65	0.40
2:B:31:LYS:HG2	2:B:32:TYR:N	2.37	0.40

There are no symmetry-related clashes.

## 5.3 Torsion angles [i](#)

### 5.3.1 Protein backbone [i](#)

In the following table, the Percentiles column shows the percent Ramachandran outliers of the chain as a percentile score with respect to all X-ray entries followed by that with respect to entries of similar resolution.

The Analysed column shows the number of residues for which the backbone conformation was analysed, and the total number of residues.

Mol	Chain	Analysed	Favoured	Allowed	Outliers	Percentiles	
1	A	304/322 (94%)	296 (97%)	8 (3%)	0	100	100
2	B	160/167 (96%)	153 (96%)	7 (4%)	0	100	100
All	All	464/489 (95%)	449 (97%)	15 (3%)	0	100	100

There are no Ramachandran outliers to report.

### 5.3.2 Protein sidechains [i](#)

In the following table, the Percentiles column shows the percent sidechain outliers of the chain as a percentile score with respect to all X-ray entries followed by that with respect to entries of similar resolution.

The Analysed column shows the number of residues for which the sidechain conformation was analysed, and the total number of residues.

Mol	Chain	Analysed	Rotameric	Outliers	Percentiles	
1	A	281/293 (96%)	264 (94%)	17 (6%)	17	5
2	B	143/147 (97%)	132 (92%)	11 (8%)	12	3
All	All	424/440 (96%)	396 (93%)	28 (7%)	15	4

All (28) residues with a non-rotameric sidechain are listed below:

Mol	Chain	Res	Type
1	A	475	LYS
1	A	498	ASP
1	A	502	GLU
1	A	548	ASP
1	A	590	LEU
1	A	623	ARG
1	A	654	LYS
1	A	664	ILE

*Continued on next page...*

*Continued from previous page...*

Mol	Chain	Res	Type
1	A	692	ASP
1	A	702	MET
1	A	703	GLU
1	A	704	ASN
1	A	705	LYS
1	A	706	MET
1	A	728	GLN
1	A	729	LEU
1	A	730	MET
2	B	30	GLU
2	B	49	GLN
2	B	68	ARG
2	B	69	ASP
2	B	70	LEU
2	B	85	THR
2	B	101	LEU
2	B	121	GLU
2	B	125	VAL
2	B	141	CYS
2	B	167	ARG

Sometimes sidechains can be flipped to improve hydrogen bonding and reduce clashes. All (17) such sidechains are listed below:

Mol	Chain	Res	Type
1	A	459	GLN
1	A	469	ASN
1	A	478	HIS
1	A	496	ASN
1	A	538	ASN
1	A	560	GLN
1	A	607	ASN
1	A	627	GLN
1	A	668	HIS
1	A	689	GLN
1	A	698	GLN
1	A	700	HIS
1	A	728	GLN
2	B	87	GLN
2	B	116	ASN
2	B	130	GLN
2	B	166	ASN

### 5.3.3 RNA [i](#)

There are no RNA molecules in this entry.

## 5.4 Non-standard residues in protein, DNA, RNA chains [i](#)

There are no non-standard protein/DNA/RNA residues in this entry.

## 5.5 Carbohydrates [i](#)

There are no oligosaccharides in this entry.

## 5.6 Ligand geometry [i](#)

Of 3 ligands modelled in this entry, 1 is monoatomic - leaving 2 for Mogul analysis.

In the following table, the Counts columns list the number of bonds (or angles) for which Mogul statistics could be retrieved, the number of bonds (or angles) that are observed in the model and the number of bonds (or angles) that are defined in the Chemical Component Dictionary. The Link column lists molecule types, if any, to which the group is linked. The Z score for a bond length (or angle) is the number of standard deviations the observed value is removed from the expected value. A bond length (or angle) with  $|Z| > 2$  is considered an outlier worth inspection. RMSZ is the root-mean-square of all Z scores of the bond lengths (or angles).

Mol	Type	Chain	Res	Link	Bond lengths			Bond angles		
					Counts	RMSZ	# Z  > 2	Counts	RMSZ	# Z  > 2
5	GNP	B	201	4	34,34,34	1.05	4 (11%)	47,54,54	0.96	2 (4%)
3	QMA	A	801	-	16,16,16	0.55	0	22,22,22	0.67	1 (4%)

In the following table, the Chirals column lists the number of chiral outliers, the number of chiral centers analysed, the number of these observed in the model and the number defined in the Chemical Component Dictionary. Similar counts are reported in the Torsion and Rings columns. '-' means no outliers of that kind were identified.

Mol	Type	Chain	Res	Link	Chirals	Torsions	Rings
5	GNP	B	201	4	-	5/18/38/38	0/3/3/3
3	QMA	A	801	-	-	4/4/4/4	0/2/2/2

All (4) bond length outliers are listed below:

Mol	Chain	Res	Type	Atoms	Z	Observed(Å)	Ideal(Å)
5	B	201	GNP	PG-O1G	3.01	1.50	1.46

*Continued on next page...*

*Continued from previous page...*

Mol	Chain	Res	Type	Atoms	Z	Observed(Å)	Ideal(Å)
5	B	201	GNP	PB-O1B	3.00	1.50	1.46
5	B	201	GNP	PG-O2G	-2.23	1.50	1.56
5	B	201	GNP	PB-O2B	-2.23	1.50	1.56

All (3) bond angle outliers are listed below:

Mol	Chain	Res	Type	Atoms	Z	Observed(°)	Ideal(°)
5	B	201	GNP	O2B-PB-O1B	4.10	118.67	109.87
5	B	201	GNP	O3A-PB-N3B	-2.57	99.45	106.59
3	A	801	QMA	C6-C1-C11	-2.17	117.54	119.82

There are no chirality outliers.

All (9) torsion outliers are listed below:

Mol	Chain	Res	Type	Atoms
3	A	801	QMA	C6-C1-C11-O2
3	A	801	QMA	C2-C1-C11-O2
5	B	201	GNP	PB-N3B-PG-O1G
5	B	201	GNP	PG-N3B-PB-O1B
5	B	201	GNP	PG-N3B-PB-O3A
5	B	201	GNP	PA-O3A-PB-O1B
5	B	201	GNP	PA-O3A-PB-O2B
3	A	801	QMA	C10-C9-O3-C12
3	A	801	QMA	C8-C9-O3-C12

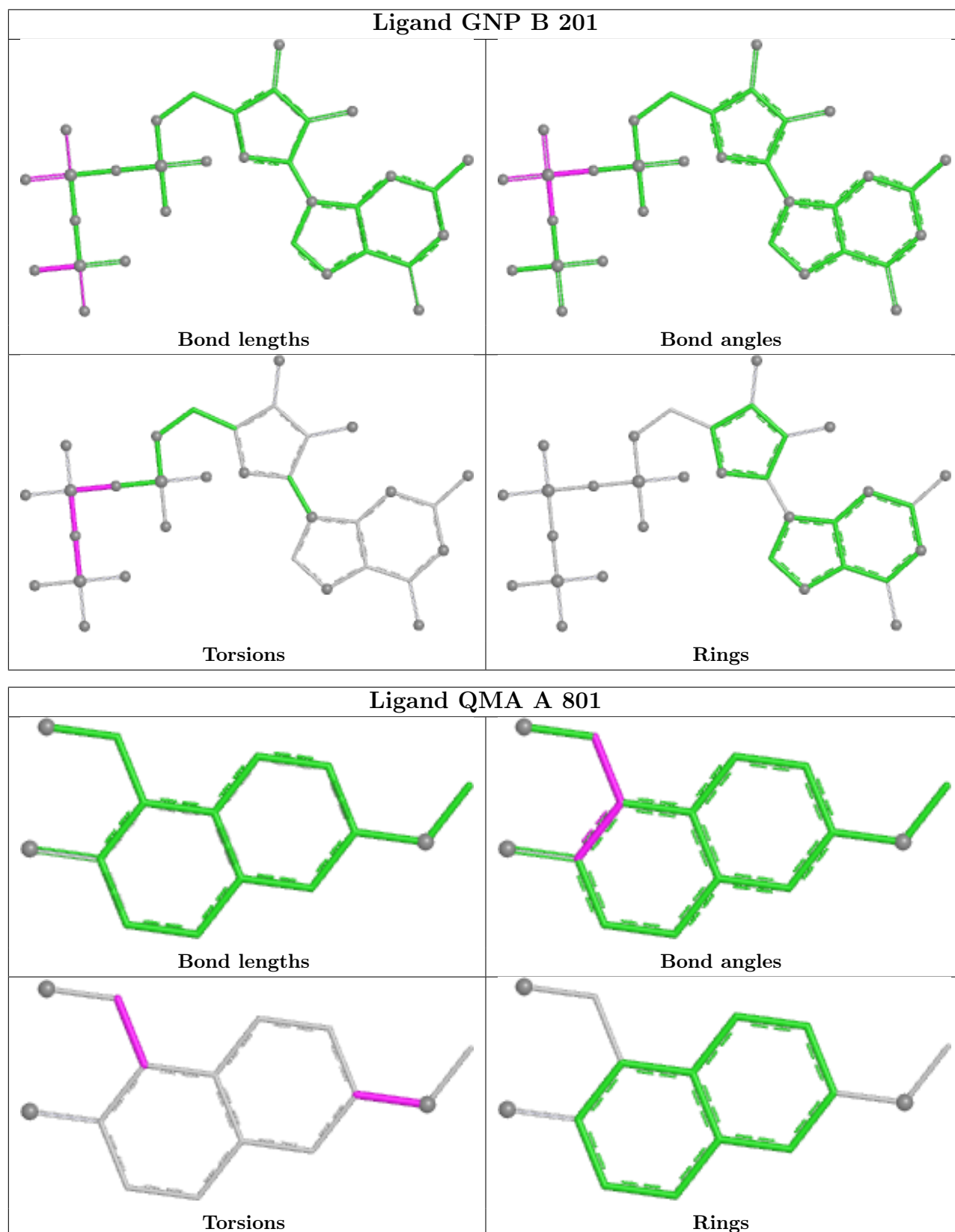
There are no ring outliers.

1 monomer is involved in 2 short contacts:

Mol	Chain	Res	Type	Clashes	Symm-Clashes
5	B	201	GNP	2	0

The following is a two-dimensional graphical depiction of Mogul quality analysis of bond lengths, bond angles, torsion angles, and ring geometry for all instances of the Ligand of Interest. In addition, ligands with molecular weight > 250 and outliers as shown on the validation Tables will also be included. For torsion angles, if less than 5% of the Mogul distribution of torsion angles is within 10 degrees of the torsion angle in question, then that torsion angle is considered an outlier. Any bond that is central to one or more torsion angles identified as an outlier by Mogul will be highlighted in the graph. For rings, the root-mean-square deviation (RMSD) between the ring in question and similar rings identified by Mogul is calculated over all ring torsion angles. If the average RMSD is greater than 60 degrees and the minimal RMSD between the ring in question and any Mogul-identified rings is also greater than 60 degrees, then that ring is considered an outlier.

The outliers are highlighted in purple. The color gray indicates Mogul did not find sufficient equivalents in the CSD to analyse the geometry.



## 5.7 Other polymers [i](#)

There are no such residues in this entry.

## 5.8 Polymer linkage issues [i](#)

There are no chain breaks in this entry.

## 6 Fit of model and data

### 6.1 Protein, DNA and RNA chains

In the following table, the column labelled ‘#RSRZ > 2’ contains the number (and percentage) of RSRZ outliers, followed by percent RSRZ outliers for the chain as percentile scores relative to all X-ray entries and entries of similar resolution. The OWAB column contains the minimum, median, 95<sup>th</sup> percentile and maximum values of the occupancy-weighted average B-factor per residue. The column labelled ‘Q < 0.9’ lists the number of (and percentage) of residues with an average occupancy less than 0.9.

Mol	Chain	Analysed	<RSRZ>	#RSRZ>2	OWAB(Å <sup>2</sup> )	Q<0.9
1	A	307/322 (95%)	0.45	15 (4%) 35 39	18, 42, 79, 103	1 (0%)
2	B	163/167 (97%)	0.53	10 (6%) 27 31	32, 47, 71, 98	1 (0%)
All	All	470/489 (96%)	0.48	25 (5%) 32 36	18, 44, 77, 103	2 (0%)

All (25) RSRZ outliers are listed below:

Mol	Chain	Res	Type	RSRZ
1	A	652	ASN	4.6
1	A	499	PRO	4.4
2	B	32	TYR	4.3
1	A	500	GLN	4.0
2	B	61	THR	3.1
2	B	138	TRP	3.1
1	A	646	THR	3.0
2	B	141	CYS	3.0
1	A	693	THR	3.0
1	A	419	TYR	2.9
1	A	497	LEU	2.8
2	B	67	MET	2.8
1	A	452	ARG	2.5
2	B	86	ALA	2.5
2	B	134	LEU	2.4
2	B	142	ALA	2.4
2	B	126	VAL	2.3
1	A	498	ASP	2.3
1	A	730	MET	2.3
2	B	122	ASP	2.1
1	A	597	TRP	2.1
1	A	703	GLU	2.0
1	A	702	MET	2.0
1	A	653	HIS	2.0

*Continued on next page...*

*Continued from previous page...*

Mol	Chain	Res	Type	RSRZ
1	A	729	LEU	2.0

## 6.2 Non-standard residues in protein, DNA, RNA chains [i](#)

There are no non-standard protein/DNA/RNA residues in this entry.

## 6.3 Carbohydrates [i](#)

There are no oligosaccharides in this entry.

## 6.4 Ligands [i](#)

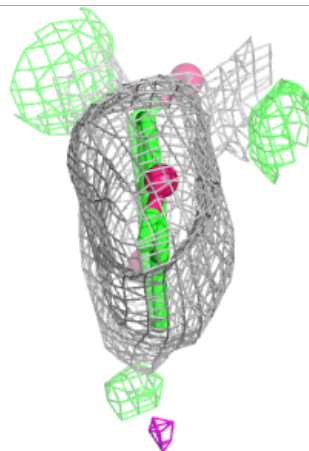
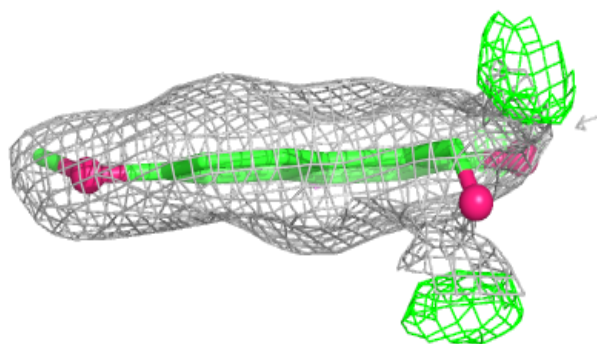
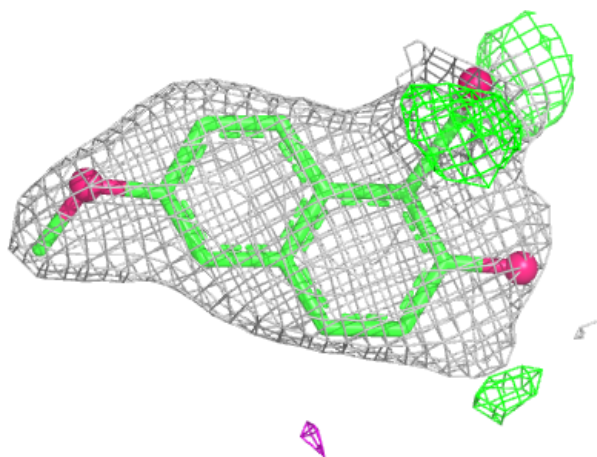
In the following table, the Atoms column lists the number of modelled atoms in the group and the number defined in the chemical component dictionary. The B-factors column lists the minimum, median, 95<sup>th</sup> percentile and maximum values of B factors of atoms in the group. The column labelled 'Q< 0.9' lists the number of atoms with occupancy less than 0.9.

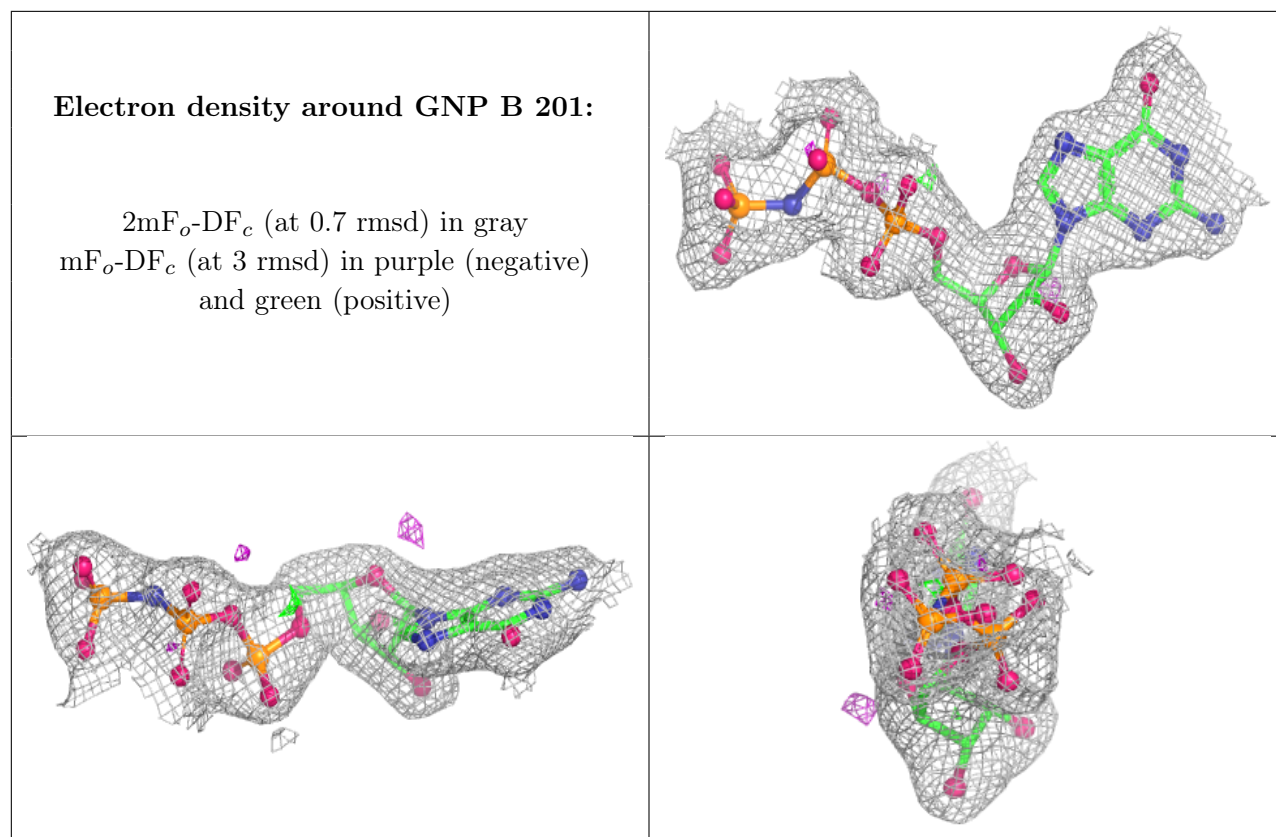
Mol	Type	Chain	Res	Atoms	RSCC	RSR	B-factors(Å <sup>2</sup> )	Q<0.9
3	QMA	A	801	15/15	0.82	0.15	59,68,74,76	0
4	MG	B	200	1/1	0.96	0.05	42,42,42,42	0
5	GNP	B	201	32/32	0.96	0.07	38,41,43,44	0

The following is a graphical depiction of the model fit to experimental electron density of all instances of the Ligand of Interest. In addition, ligands with molecular weight > 250 and outliers as shown on the geometry validation Tables will also be included. Each fit is shown from different orientation to approximate a three-dimensional view.

**Electron density around QMA A 801:**

$2mF_o-DF_c$  (at 0.7 rmsd) in gray  
 $mF_o-DF_c$  (at 3 rmsd) in purple (negative)  
and green (positive)





## 6.5 Other polymers [i](#)

There are no such residues in this entry.