



# Full wwPDB X-ray Structure Validation Report ⓘ

Mar 17, 2026 – 09:50 PM UTC

PDB ID : 6UXQ / pdb\_00006uxq  
Title : Crystal structure of BAK core domain BH3-groove-dimer in complex with POPC and C8E4  
Authors : Cowan, A.D.; Colman, P.M.; Czabotar, P.E.  
Deposited on : 2019-11-07  
Resolution : 1.70 Å(reported)

This is a Full wwPDB X-ray Structure Validation Report for a publicly released PDB entry.

We welcome your comments at [validation@mail.wwpdb.org](mailto:validation@mail.wwpdb.org)

A user guide is available at

<https://www.wwpdb.org/validation/2017/XrayValidationReportHelp>

with specific help available everywhere you see the ⓘ symbol.

The types of validation reports are described at

<http://www.wwpdb.org/validation/2017/FAQs#types>.

---

The following versions of software and data (see [references ⓘ](#)) were used in the production of this report:

MolProbity : 4-5-2 with Phenix2.0  
Mogul : 2022.3.0, CSD as543be (2022)  
Xtrriage (Phenix) : 2.0  
EDS : 3.0  
Buster-report : wwPDB partial adaption of 1.1.7 (2018)  
Percentile statistics : 20250101.v01 (using entries in the PDB archive January 1st 2025)  
CCP4 : 9.0.010 (Gargrove)  
Density-Fitness : 1.0.12  
Ideal geometry (proteins) : Engh & Huber (2001)  
Ideal geometry (DNA, RNA) : Parkinson et al. (1996)  
Validation Pipeline (wwPDB-VP) : 2.49

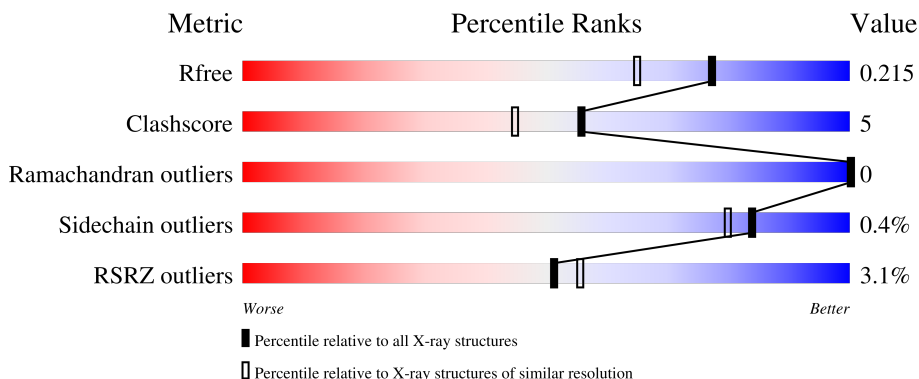
# 1 Overall quality at a glance

The following experimental techniques were used to determine the structure:

*X-RAY DIFFRACTION*

The reported resolution of this entry is 1.70 Å.

Percentile scores (ranging between 0-100) for global validation metrics of the entry are shown in the following graphic. The table shows the number of entries on which the scores are based.



Metric	Whole archive (#Entries)	Similar resolution (#Entries, resolution range(Å))
$R_{free}$	180053	5551 (1.70-1.70)
Clashscore	190562	5924 (1.70-1.70)
Ramachandran outliers	187476	5846 (1.70-1.70)
Sidechain outliers	187428	5846 (1.70-1.70)
RSRZ outliers	180081	5554 (1.70-1.70)

The table below summarises the geometric issues observed across the polymeric chains and their fit to the electron density. The red, orange, yellow and green segments of the lower bar indicate the fraction of residues that contain outliers for  $\geq 3$ , 2, 1 and 0 types of geometric quality criteria respectively. A grey segment represents the fraction of residues that are not modelled. The numeric value for each fraction is indicated below the corresponding segment, with a dot representing fractions  $\leq 5\%$ . The upper red bar (where present) indicates the fraction of residues that have poor fit to the electron density. The numeric value is given above the bar.

Mol	Chain	Length	Quality of chain
1	A	85	 91% 8%
1	B	85	 85% 9% 6%
1	C	85	 86% 8% 6%
1	D	85	 89% 6% 5%

The following table lists non-polymeric compounds, carbohydrate monomers and non-standard

residues in protein, DNA, RNA chains that are outliers for geometric or electron-density-fit criteria:

Mol	Type	Chain	Res	Chirality	Geometry	Clashes	Electron density
2	SO4	B	204	-	-	X	-

## 2 Entry composition i

There are 6 unique types of molecules in this entry. The entry contains 3034 atoms, of which 0 are hydrogens and 0 are deuteriums.

In the tables below, the ZeroOcc column contains the number of atoms modelled with zero occupancy, the AltConf column contains the number of residues with at least one atom in alternate conformation and the Trace column contains the number of residues modelled with at most 2 atoms.

- Molecule 1 is a protein called Bcl-2 homologous antagonist/killer.

Mol	Chain	Residues	Atoms					ZeroOcc	AltConf	Trace
			Total	C	N	O	S			
1	A	84	702	449	121	130	2	0	5	0
1	B	80	672	427	117	125	3	0	4	0
1	C	80	664	426	116	120	2	0	3	0
1	D	81	661	419	115	125	2	0	2	0

There are 16 discrepancies between the modelled and reference sequences:

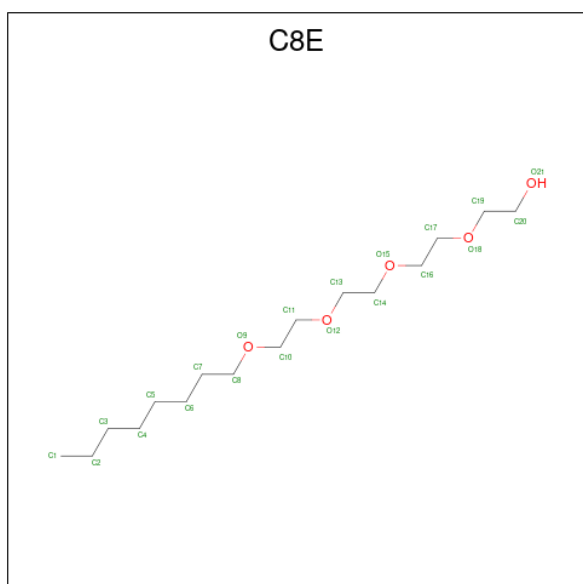
Chain	Residue	Modelled	Actual	Comment	Reference
A	64	GLY	-	expression tag	UNP Q16611
A	65	PRO	-	expression tag	UNP Q16611
A	66	LEU	-	expression tag	UNP Q16611
A	67	GLY	-	expression tag	UNP Q16611
B	64	GLY	-	expression tag	UNP Q16611
B	65	PRO	-	expression tag	UNP Q16611
B	66	LEU	-	expression tag	UNP Q16611
B	67	GLY	-	expression tag	UNP Q16611
C	64	GLY	-	expression tag	UNP Q16611
C	65	PRO	-	expression tag	UNP Q16611
C	66	LEU	-	expression tag	UNP Q16611
C	67	GLY	-	expression tag	UNP Q16611
D	64	GLY	-	expression tag	UNP Q16611
D	65	PRO	-	expression tag	UNP Q16611
D	66	LEU	-	expression tag	UNP Q16611
D	67	GLY	-	expression tag	UNP Q16611

- Molecule 2 is SULFATE ION (CCD ID: SO4) (formula: O<sub>4</sub>S).



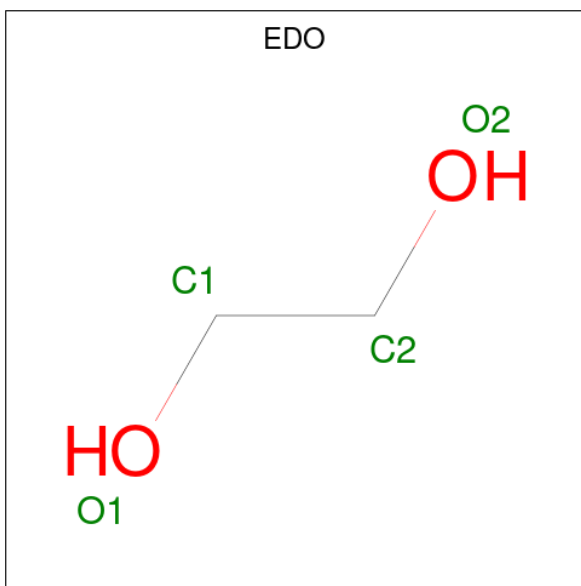
Mol	Chain	Residues	Atoms	ZeroOcc	AltConf
2	A	1	Total O S 5 4 1	0	0
2	A	1	Total O S 5 4 1	0	0
2	B	1	Total O S 5 4 1	0	0
2	D	1	Total O S 5 4 1	0	0

- Molecule 3 is (HYDROXYETHYLOXY)TRI(ETHYLOXY)OCTANE (CCD ID: C8E) (formula: C<sub>16</sub>H<sub>34</sub>O<sub>5</sub>).



Mol	Chain	Residues	Atoms	ZeroOcc	AltConf
3	A	1	Total C 7 7	0	0
3	A	1	Total C O 11 10 1	0	0
3	A	1	Total C O 21 16 5	0	0
3	B	1	Total C O 21 16 5	0	0
3	B	1	Total C O 9 8 1	0	0
3	B	1	Total C O 21 16 5	0	0
3	C	1	Total C O 15 12 3	0	0
3	D	1	Total C O 17 12 5	0	0

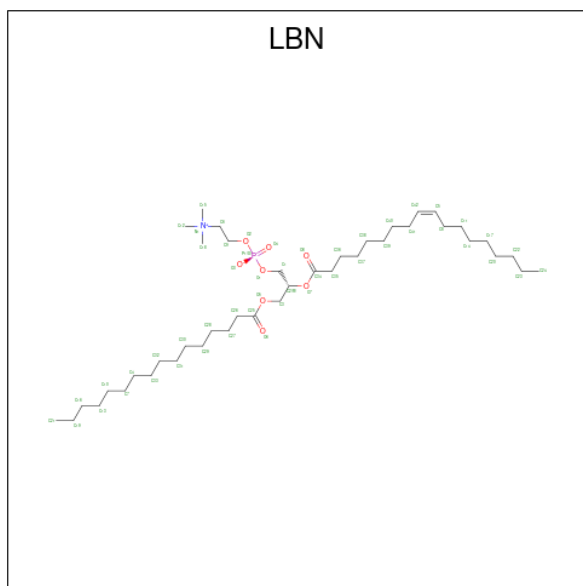
- Molecule 4 is 1,2-ETHANEDIOL (CCD ID: EDO) (formula: C<sub>2</sub>H<sub>6</sub>O<sub>2</sub>).



Mol	Chain	Residues	Atoms	ZeroOcc	AltConf
4	A	1	Total C O 4 2 2	0	0
4	B	1	Total C O 4 2 2	0	0
4	B	1	Total C O 4 2 2	0	0

- Molecule 5 is 1-palmitoyl-2-oleoyl-sn-glycero-3-phosphocholine (CCD ID: LBN) (formula:

C<sub>42</sub>H<sub>82</sub>NO<sub>8</sub>P (labeled as "Ligand of Interest" by depositor).



Mol	Chain	Residues	Atoms					ZeroOcc	AltConf
			Total	C	N	O	P		
5	B	1	35	25	1	8	1	0	0

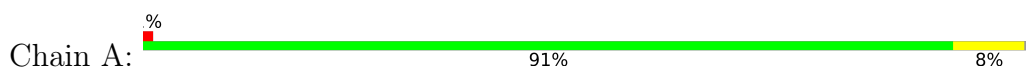
- Molecule 6 is water.

Mol	Chain	Residues	Atoms		ZeroOcc	AltConf
6	A	45	Total	O	0	0
			45	45		
6	B	43	Total	O	0	0
			43	43		
6	C	26	Total	O	0	0
			26	26		
6	D	32	Total	O	0	0
			32	32		

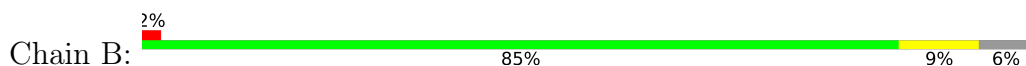
### 3 Residue-property plots [i](#)

These plots are drawn for all protein, RNA, DNA and oligosaccharide chains in the entry. The first graphic for a chain summarises the proportions of the various outlier classes displayed in the second graphic. The second graphic shows the sequence view annotated by issues in geometry and electron density. Residues are color-coded according to the number of geometric quality criteria for which they contain at least one outlier: green = 0, yellow = 1, orange = 2 and red = 3 or more. A red dot above a residue indicates a poor fit to the electron density ( $RSRZ > 2$ ). Stretches of 2 or more consecutive residues without any outlier are shown as a green connector. Residues present in the sample, but not in the model, are shown in grey.

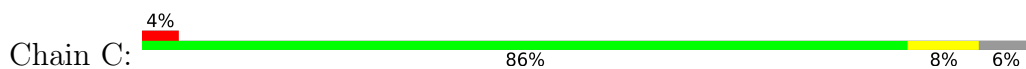
- Molecule 1: Bcl-2 homologous antagonist/killer



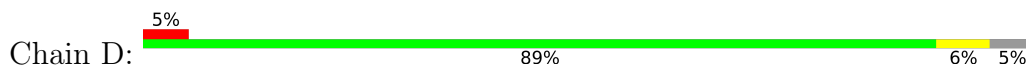
- Molecule 1: Bcl-2 homologous antagonist/killer



- Molecule 1: Bcl-2 homologous antagonist/killer



- Molecule 1: Bcl-2 homologous antagonist/killer



## 4 Data and refinement statistics i

Property	Value	Source
Space group	C 2 2 21	Depositor
Cell constants a, b, c, $\alpha$ , $\beta$ , $\gamma$	84.32Å 150.09Å 51.75Å 90.00° 90.00° 90.00°	Depositor
Resolution (Å)	43.02 – 1.70 43.02 – 1.70	Depositor EDS
% Data completeness (in resolution range)	99.2 (43.02-1.70) 99.2 (43.02-1.70)	Depositor EDS
$R_{merge}$	0.10	Depositor
$R_{sym}$	(Not available)	Depositor
$\langle I/\sigma(I) \rangle$ <sup>1</sup>	0.99 (at 1.70Å)	Xtriage
Refinement program	PHENIX 1.15-3459	Depositor
R, $R_{free}$	0.179 , 0.214 0.180 , 0.215	Depositor DCC
$R_{free}$ test set	1993 reflections (5.45%)	wwPDB-VP
Wilson B-factor (Å <sup>2</sup> )	24.5	Xtriage
Anisotropy	0.603	Xtriage
Bulk solvent $k_{sol}$ (e/Å <sup>3</sup> ), $B_{sol}$ (Å <sup>2</sup> )	0.34 , 44.1	EDS
L-test for twinning <sup>2</sup>	$\langle  L  \rangle = 0.49$ , $\langle L^2 \rangle = 0.32$	Xtriage
Estimated twinning fraction	0.015 for 1/2*h-1/2*k,-3/2*h-1/2*k,-l 0.023 for 1/2*h+1/2*k,3/2*h-1/2*k,-l	Xtriage
$F_o, F_c$ correlation	0.97	EDS
Total number of atoms	3034	wwPDB-VP
Average B, all atoms (Å <sup>2</sup> )	34.0	wwPDB-VP

Xtriage's analysis on translational NCS is as follows: *The largest off-origin peak in the Patterson function is 6.25% of the height of the origin peak. No significant pseudotranslation is detected.*

<sup>1</sup>Intensities estimated from amplitudes.

<sup>2</sup>Theoretical values of  $\langle |L| \rangle$ ,  $\langle L^2 \rangle$  for acentric reflections are 0.5, 0.333 respectively for untwinned datasets, and 0.375, 0.2 for perfectly twinned datasets.

## 5 Model quality [i](#)

### 5.1 Standard geometry [i](#)

Bond lengths and bond angles in the following residue types are not validated in this section: C8E, SO4, EDO, LBN

The Z score for a bond length (or angle) is the number of standard deviations the observed value is removed from the expected value. A bond length (or angle) with  $|Z| > 5$  is considered an outlier worth inspection. RMSZ is the root-mean-square of all Z scores of the bond lengths (or angles).

Mol	Chain	Bond lengths		Bond angles	
		RMSZ	# Z  >5	RMSZ	# Z  >5
1	A	0.33	0/717	0.47	0/970
1	B	0.35	0/687	0.51	0/928
1	C	0.29	0/682	0.43	0/923
1	D	0.30	0/675	0.47	0/913
All	All	0.32	0/2761	0.47	0/3734

There are no bond length outliers.

There are no bond angle outliers.

There are no chirality outliers.

There are no planarity outliers.

### 5.2 Too-close contacts [i](#)

In the following table, the Non-H and H(model) columns list the number of non-hydrogen atoms and hydrogen atoms in the chain respectively. The H(added) column lists the number of hydrogen atoms added and optimized by MolProbity. The Clashes column lists the number of clashes within the asymmetric unit, whereas Symm-Clashes lists symmetry-related clashes.

Mol	Chain	Non-H	H(model)	H(added)	Clashes	Symm-Clashes
1	A	702	0	683	6	0
1	B	672	0	642	10	0
1	C	664	0	649	6	0
1	D	661	0	634	3	0
2	A	10	0	0	0	0
2	B	5	0	0	3	0
2	D	5	0	0	1	0
3	A	39	0	66	6	0
3	B	51	0	85	5	0

*Continued on next page...*

*Continued from previous page...*

Mol	Chain	Non-H	H(model)	H(added)	Clashes	Symm-Clashes
3	C	15	0	20	0	0
3	D	17	0	23	3	0
4	A	4	0	6	1	0
4	B	8	0	12	2	0
5	B	35	0	0	0	0
6	A	45	0	0	1	0
6	B	43	0	0	0	0
6	C	26	0	0	1	0
6	D	32	0	0	0	0
All	All	3034	0	2820	27	0

The all-atom clashscore is defined as the number of clashes found per 1000 atoms (including hydrogen atoms). The all-atom clashscore for this structure is 5.

All (27) close contacts within the same asymmetric unit are listed below, sorted by their clash magnitude.

Atom-1	Atom-2	Interatomic distance (Å)	Clash overlap (Å)
3:A:505:C8E:H191	3:D:201:C8E:H201	1.58	0.85
1:A:74:VAL:HG13	1:B:96[A]:MET:HE3	1.65	0.79
1:D:144:GLN:NE2	2:D:202:SO4:O4	2.19	0.75
1:B:144:GLN:NE2	2:B:204:SO4:O2	2.24	0.70
1:B:143:TYR:OH	1:C:120:GLU:OE1	2.12	0.67
1:A:89:TYR:OH	1:B:84:ASP:OD2	2.19	0.59
1:A:122:GLY:HA3	3:B:205:C8E:H112	1.83	0.59
3:B:205:C8E:H42	3:D:201:C8E:H142	1.83	0.59
1:A:108:TYR:CZ	1:A:112:THR:HG21	2.40	0.56
1:B:96[A]:MET:HE2	1:B:134:PHE:CE1	2.40	0.56
1:D:108:TYR:O	1:D:112:THR:HG23	2.07	0.54
1:C:89:TYR:OH	1:D:84[A]:ASP:OD2	2.26	0.53
1:B:144:GLN:NE2	2:B:204:SO4:S	2.85	0.50
1:B:144:GLN:NE2	2:B:204:SO4:O3	2.42	0.49
3:B:205:C8E:H41	1:C:128:VAL:HG11	1.94	0.48
1:C:119:PHE:CD1	1:C:123[B]:ILE:HG22	2.49	0.47
3:A:505:C8E:H201	4:A:506:EDO:H12	1.97	0.46
1:A:76:ARG:NH2	6:A:609:HOH:O	2.49	0.45
3:B:205:C8E:H52	1:C:125:TRP:HA	1.98	0.44
1:B:87:ARG:HB3	3:B:205:C8E:H201	1.99	0.44
3:A:505:C8E:H13	3:A:505:C8E:H41	1.66	0.43
1:A:121:SER:HB3	3:A:505:C8E:H162	2.02	0.42
1:B:71:MET:HG2	4:B:206:EDO:O2	2.20	0.42
3:A:503:C8E:H21	3:A:504:C8E:H51	2.02	0.41

*Continued on next page...*

*Continued from previous page...*

Atom-1	Atom-2	Interatomic distance (Å)	Clash overlap (Å)
1:B:69:SER:HB2	4:B:206:EDO:O2	2.21	0.41
3:A:505:C8E:H52	3:D:201:C8E:H132	2.03	0.40
1:C:141:HIS:HD2	6:C:326:HOH:O	2.03	0.40

There are no symmetry-related clashes.

## 5.3 Torsion angles [i](#)

### 5.3.1 Protein backbone [i](#)

In the following table, the Percentiles column shows the percent Ramachandran outliers of the chain as a percentile score with respect to all X-ray entries followed by that with respect to entries of similar resolution.

The Analysed column shows the number of residues for which the backbone conformation was analysed, and the total number of residues.

Mol	Chain	Analysed	Favoured	Allowed	Outliers	Percentiles	
1	A	87/85 (102%)	87 (100%)	0	0	100	100
1	B	82/85 (96%)	82 (100%)	0	0	100	100
1	C	81/85 (95%)	81 (100%)	0	0	100	100
1	D	81/85 (95%)	81 (100%)	0	0	100	100
All	All	331/340 (97%)	331 (100%)	0	0	100	100

There are no Ramachandran outliers to report.

### 5.3.2 Protein sidechains [i](#)

In the following table, the Percentiles column shows the percent sidechain outliers of the chain as a percentile score with respect to all X-ray entries followed by that with respect to entries of similar resolution.

The Analysed column shows the number of residues for which the sidechain conformation was analysed, and the total number of residues.

Mol	Chain	Analysed	Rotameric	Outliers	Percentiles	
1	A	73/69 (106%)	73 (100%)	0	100	100
1	B	69/69 (100%)	69 (100%)	0	100	100

*Continued on next page...*

Continued from previous page...

Mol	Chain	Analysed	Rotameric	Outliers	Percentiles	
1	C	69/69 (100%)	69 (100%)	0	100	100
1	D	69/69 (100%)	68 (99%)	1 (1%)	59	46
All	All	280/276 (101%)	279 (100%)	1 (0%)	84	80

All (1) residues with a non-rotameric sidechain are listed below:

Mol	Chain	Res	Type
1	D	86	ASN

Sometimes sidechains can be flipped to improve hydrogen bonding and reduce clashes. All (2) such sidechains are listed below:

Mol	Chain	Res	Type
1	C	145	HIS
1	D	144	GLN

### 5.3.3 RNA [i](#)

There are no RNA molecules in this entry.

## 5.4 Non-standard residues in protein, DNA, RNA chains [i](#)

There are no non-standard protein/DNA/RNA residues in this entry.

## 5.5 Carbohydrates [i](#)

There are no oligosaccharides in this entry.

## 5.6 Ligand geometry [i](#)

16 ligands are modelled in this entry.

In the following table, the Counts columns list the number of bonds (or angles) for which Mogul statistics could be retrieved, the number of bonds (or angles) that are observed in the model and the number of bonds (or angles) that are defined in the Chemical Component Dictionary. The Link column lists molecule types, if any, to which the group is linked. The Z score for a bond length (or angle) is the number of standard deviations the observed value is removed from the expected value. A bond length (or angle) with  $|Z| > 2$  is considered an outlier worth inspection. RMSZ is the root-mean-square of all Z scores of the bond lengths (or angles).

Mol	Type	Chain	Res	Link	Bond lengths			Bond angles		
					Counts	RMSZ	# Z  > 2	Counts	RMSZ	# Z  > 2
4	EDO	A	506	-	3,3,3	0.45	0	2,2,2	0.37	0
3	C8E	A	505	-	20,20,20	0.40	0	19,19,19	0.46	0
3	C8E	C	200	-	14,14,20	0.40	0	13,13,19	0.34	0
3	C8E	B	203	-	8,8,20	0.25	0	7,7,19	0.52	0
5	LBN	B	202	-	34,34,51	1.26	3 (8%)	40,42,59	0.93	2 (5%)
3	C8E	A	504	-	10,10,20	0.37	0	9,9,19	0.46	0
3	C8E	A	503	-	6,6,20	0.27	0	5,5,19	0.44	0
4	EDO	B	207	-	3,3,3	0.38	0	2,2,2	0.55	0
3	C8E	B	201	-	20,20,20	0.40	0	19,19,19	0.53	0
2	SO4	A	502	-	4,4,4	0.24	0	6,6,6	0.12	0
4	EDO	B	206	-	3,3,3	0.33	0	2,2,2	1.10	0
2	SO4	B	204	-	4,4,4	0.24	0	6,6,6	0.11	0
3	C8E	B	205	-	20,20,20	0.39	0	19,19,19	0.44	0
2	SO4	A	501	-	4,4,4	0.29	0	6,6,6	0.25	0
2	SO4	D	202	-	4,4,4	0.30	0	6,6,6	0.27	0
3	C8E	D	201	-	16,16,20	0.41	0	15,15,19	0.35	0

In the following table, the Chirals column lists the number of chiral outliers, the number of chiral centers analysed, the number of these observed in the model and the number defined in the Chemical Component Dictionary. Similar counts are reported in the Torsion and Rings columns. '-' means no outliers of that kind were identified.

Mol	Type	Chain	Res	Link	Chirals	Torsions	Rings
4	EDO	A	506	-	-	0/1/1/1	-
3	C8E	A	505	-	-	12/18/18/18	-
3	C8E	C	200	-	-	7/12/12/18	-
3	C8E	B	203	-	-	4/6/6/18	-
5	LBN	B	202	-	-	8/38/38/55	-
3	C8E	A	504	-	-	4/8/8/18	-
3	C8E	A	503	-	-	4/4/4/18	-
4	EDO	B	207	-	-	0/1/1/1	-
3	C8E	B	201	-	-	9/18/18/18	-
4	EDO	B	206	-	-	1/1/1/1	-
3	C8E	B	205	-	-	10/18/18/18	-
3	C8E	D	201	-	-	8/14/14/18	-

All (3) bond length outliers are listed below:

Mol	Chain	Res	Type	Atoms	Z	Observed(Å)	Ideal(Å)
5	B	202	LBN	O5-C25	2.85	1.41	1.33

*Continued on next page...*

*Continued from previous page...*

Mol	Chain	Res	Type	Atoms	Z	Observed(Å)	Ideal(Å)
5	B	202	LBN	O7-C34	2.80	1.42	1.34
5	B	202	LBN	O7-C2	-2.53	1.40	1.46

All (2) bond angle outliers are listed below:

Mol	Chain	Res	Type	Atoms	Z	Observed(°)	Ideal(°)
5	B	202	LBN	O7-C34-C35	3.81	119.73	111.48
5	B	202	LBN	O5-C25-C26	2.54	119.57	111.83

There are no chirality outliers.

All (67) torsion outliers are listed below:

Mol	Chain	Res	Type	Atoms
5	B	202	LBN	O7-C2-C3-O5
3	A	505	C8E	C17-C16-O15-C14
3	B	201	C8E	O15-C16-C17-O18
3	B	205	C8E	O9-C10-C11-O12
3	D	201	C8E	O15-C16-C17-O18
3	A	505	C8E	O9-C10-C11-O12
3	C	200	C8E	O9-C10-C11-O12
5	B	202	LBN	C26-C25-O5-C3
3	D	201	C8E	O18-C19-C20-O21
5	B	202	LBN	O6-C25-O5-C3
3	A	505	C8E	O18-C19-C20-O21
3	B	205	C8E	O18-C19-C20-O21
3	B	203	C8E	C4-C5-C6-C7
3	A	504	C8E	C3-C4-C5-C6
3	A	505	C8E	C2-C3-C4-C5
3	A	503	C8E	C2-C3-C4-C5
3	A	505	C8E	C1-C2-C3-C4
3	B	201	C8E	O18-C19-C20-O21
3	A	504	C8E	C2-C3-C4-C5
3	B	201	C8E	O12-C13-C14-O15
5	B	202	LBN	C1-C2-C3-O5
3	A	505	C8E	O12-C13-C14-O15
3	B	203	C8E	C6-C7-C8-O9
3	B	205	C8E	C16-C17-O18-C19
3	B	205	C8E	O15-C16-C17-O18
3	B	203	C8E	C3-C4-C5-C6
3	C	200	C8E	C3-C4-C5-C6
3	A	505	C8E	C4-C5-C6-C7
3	A	504	C8E	C4-C5-C6-C7

*Continued on next page...*

*Continued from previous page...*

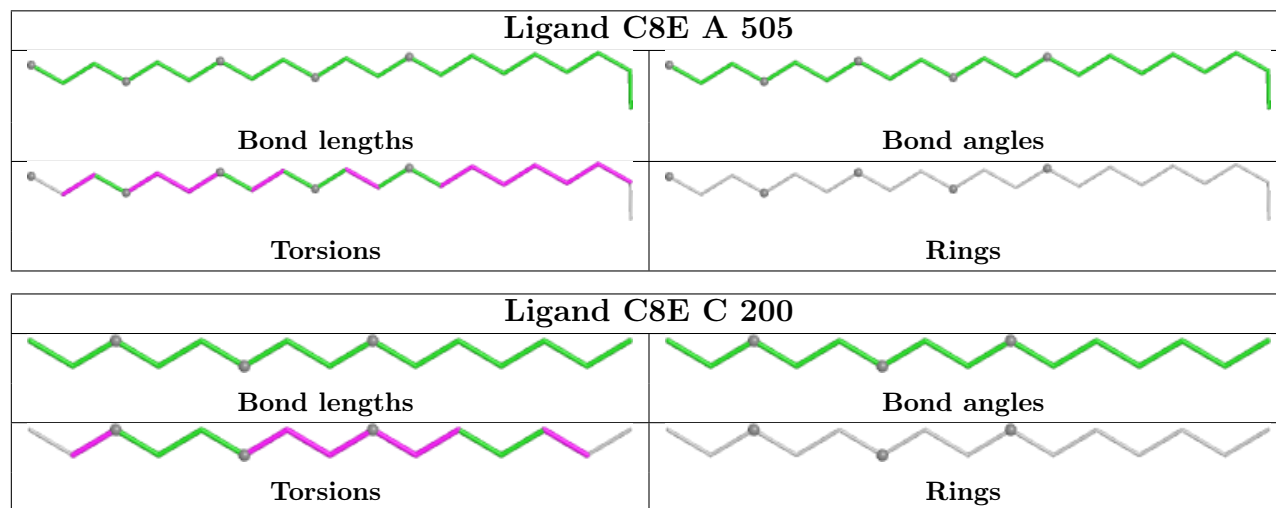
Mol	Chain	Res	Type	Atoms
3	A	505	C8E	O15-C16-C17-O18
3	A	503	C8E	C1-C2-C3-C4
3	B	201	C8E	C17-C16-O15-C14
3	B	205	C8E	C1-C2-C3-C4
5	B	202	LBN	C26-C27-C28-C29
3	C	200	C8E	C17-C16-O15-C14
3	B	201	C8E	C1-C2-C3-C4
3	A	505	C8E	C3-C4-C5-C6
5	B	202	LBN	C31-C32-C33-C4
3	A	505	C8E	C5-C6-C7-C8
3	B	205	C8E	C14-C13-O12-C11
3	D	201	C8E	C16-C17-O18-C19
3	D	201	C8E	O9-C10-C11-O12
3	B	201	C8E	C10-C11-O12-C13
3	C	200	C8E	C11-C10-O9-C8
3	B	205	C8E	C20-C19-O18-C17
3	D	201	C8E	C17-C16-O15-C14
3	B	205	C8E	C13-C14-O15-C16
3	B	205	C8E	C3-C4-C5-C6
3	A	505	C8E	C6-C7-C8-O9
3	B	201	C8E	C2-C3-C4-C5
3	A	503	C8E	C3-C4-C5-C6
3	D	201	C8E	C7-C8-O9-C10
3	A	504	C8E	C7-C8-O9-C10
3	C	200	C8E	C10-C11-O12-C13
3	B	205	C8E	C10-C11-O12-C13
5	B	202	LBN	C9-O2-P1-O4
3	C	200	C8E	C7-C8-O9-C10
3	B	203	C8E	C2-C3-C4-C5
5	B	202	LBN	C35-C36-C37-C38
3	A	505	C8E	C16-C17-O18-C19
4	B	206	EDO	O1-C1-C2-O2
3	B	201	C8E	C20-C19-O18-C17
3	D	201	C8E	C13-C14-O15-C16
3	B	201	C8E	C7-C8-O9-C10
3	A	503	C8E	C4-C5-C6-C7
3	D	201	C8E	C14-C13-O12-C11
3	C	200	C8E	C6-C7-C8-O9

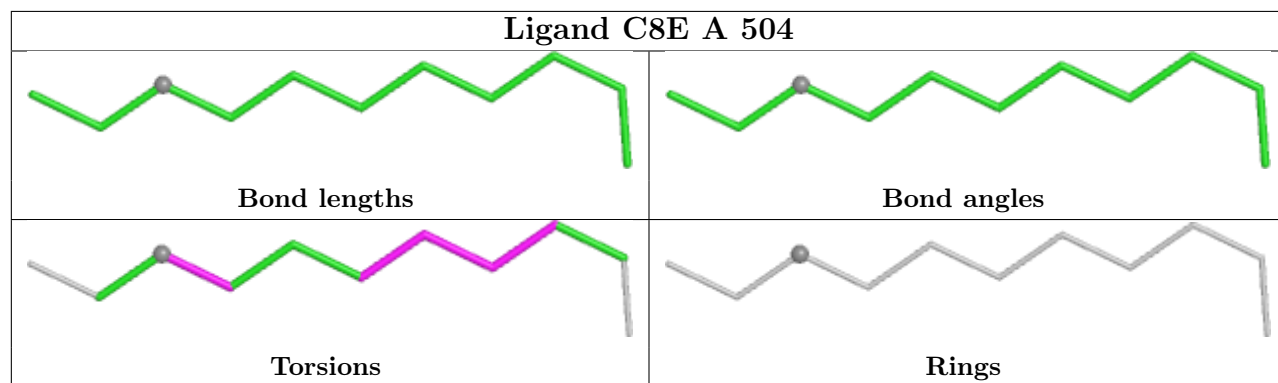
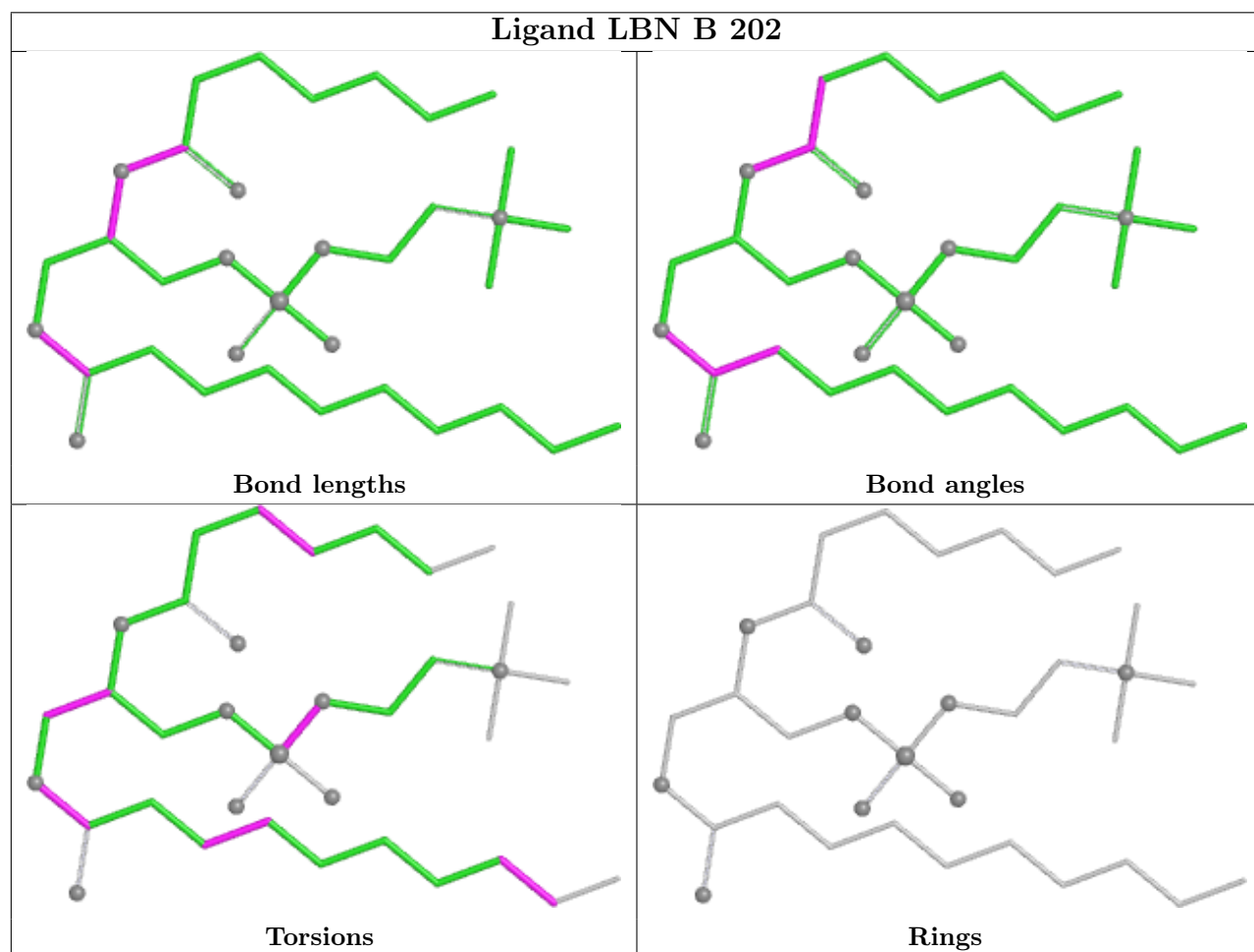
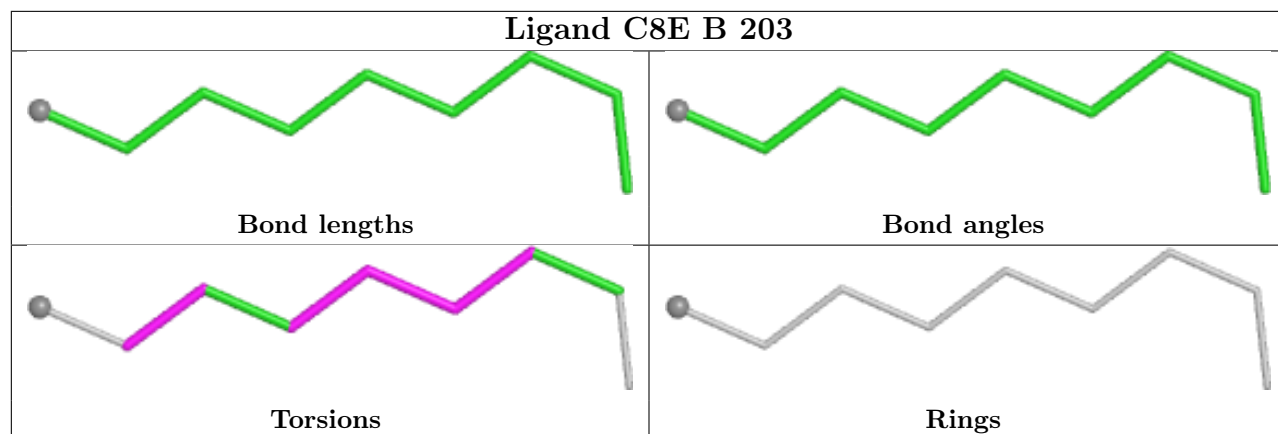
There are no ring outliers.

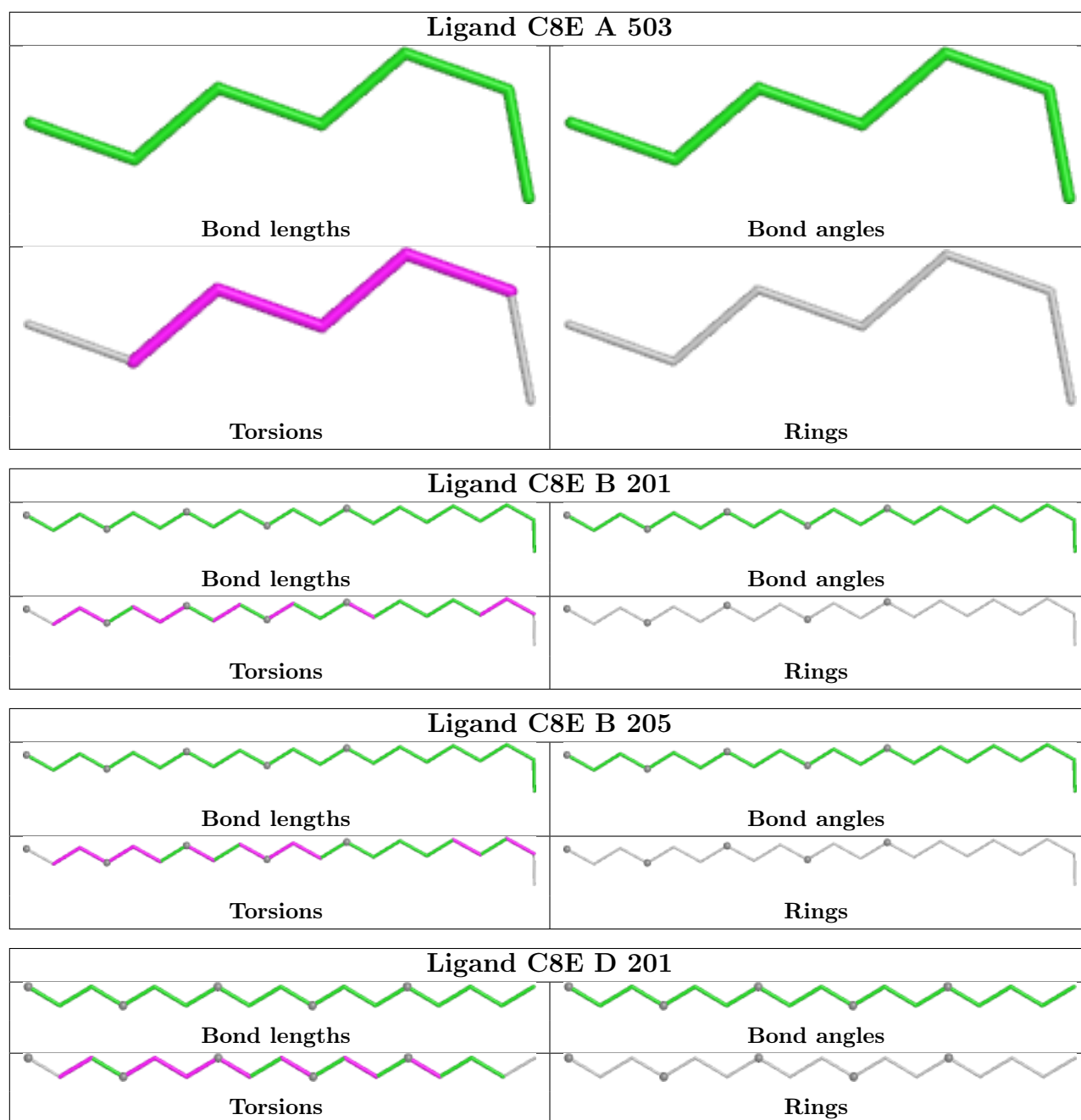
9 monomers are involved in 17 short contacts:

Mol	Chain	Res	Type	Clashes	Symm-Clashes
4	A	506	EDO	1	0
3	A	505	C8E	5	0
3	A	504	C8E	1	0
3	A	503	C8E	1	0
4	B	206	EDO	2	0
2	B	204	SO4	3	0
3	B	205	C8E	5	0
2	D	202	SO4	1	0
3	D	201	C8E	3	0

The following is a two-dimensional graphical depiction of Mogul quality analysis of bond lengths, bond angles, torsion angles, and ring geometry for all instances of the Ligand of Interest. In addition, ligands with molecular weight > 250 and outliers as shown on the validation Tables will also be included. For torsion angles, if less than 5% of the Mogul distribution of torsion angles is within 10 degrees of the torsion angle in question, then that torsion angle is considered an outlier. Any bond that is central to one or more torsion angles identified as an outlier by Mogul will be highlighted in the graph. For rings, the root-mean-square deviation (RMSD) between the ring in question and similar rings identified by Mogul is calculated over all ring torsion angles. If the average RMSD is greater than 60 degrees and the minimal RMSD between the ring in question and any Mogul-identified rings is also greater than 60 degrees, then that ring is considered an outlier. The outliers are highlighted in purple. The color gray indicates Mogul did not find sufficient equivalents in the CSD to analyse the geometry.







## 5.7 Other polymers [i](#)

There are no such residues in this entry.

## 5.8 Polymer linkage issues [i](#)

There are no chain breaks in this entry.

## 6 Fit of model and data [i](#)

### 6.1 Protein, DNA and RNA chains [i](#)

In the following table, the column labelled ‘#RSRZ > 2’ contains the number (and percentage) of RSRZ outliers, followed by percent RSRZ outliers for the chain as percentile scores relative to all X-ray entries and entries of similar resolution. The OWAB column contains the minimum, median, 95<sup>th</sup> percentile and maximum values of the occupancy-weighted average B-factor per residue. The column labelled ‘Q < 0.9’ lists the number of (and percentage) of residues with an average occupancy less than 0.9.

Mol	Chain	Analysed	<RSRZ>	#RSRZ>2	OWAB(Å <sup>2</sup> )	Q<0.9
1	A	84/85 (98%)	0.09	1 (1%) 76 80	11, 25, 40, 70	5 (5%)
1	B	80/85 (94%)	0.14	2 (2%) 58 62	13, 26, 47, 64	4 (5%)
1	C	80/85 (94%)	0.34	3 (3%) 44 48	13, 34, 56, 72	3 (3%)
1	D	81/85 (95%)	0.25	4 (4%) 35 38	15, 30, 56, 91	2 (2%)
All	All	325/340 (95%)	0.20	10 (3%) 51 55	11, 29, 56, 91	14 (4%)

All (10) RSRZ outliers are listed below:

Mol	Chain	Res	Type	RSRZ
1	A	147	LEU	4.6
1	D	148	THR	3.8
1	B	108[A]	TYR	3.2
1	D	68	SER	3.1
1	D	121[A]	SER	2.4
1	D	123	ILE	2.2
1	B	146	GLY	2.1
1	C	69	SER	2.1
1	C	95	THR	2.0
1	C	99[A]	HIS	2.0

### 6.2 Non-standard residues in protein, DNA, RNA chains [i](#)

There are no non-standard protein/DNA/RNA residues in this entry.

### 6.3 Carbohydrates [i](#)

There are no oligosaccharides in this entry.

## 6.4 Ligands

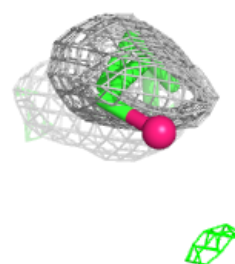
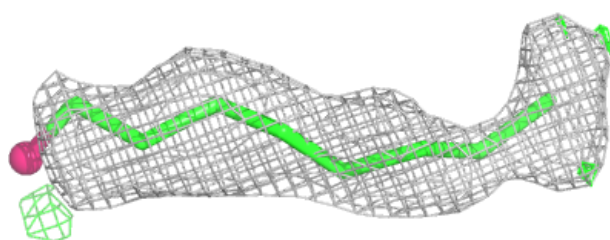
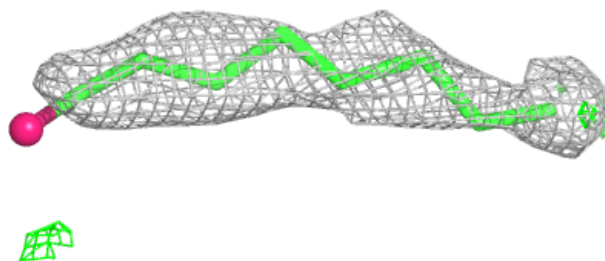
In the following table, the Atoms column lists the number of modelled atoms in the group and the number defined in the chemical component dictionary. The B-factors column lists the minimum, median, 95<sup>th</sup> percentile and maximum values of B factors of atoms in the group. The column labelled 'Q< 0.9' lists the number of atoms with occupancy less than 0.9.

Mol	Type	Chain	Res	Atoms	RSCC	RSR	B-factors(Å <sup>2</sup> )	Q<0.9
2	SO4	B	204	5/5	0.62	0.32	123,124,125,125	0
3	C8E	B	203	9/21	0.67	0.18	62,68,73,81	0
4	EDO	B	206	4/4	0.73	0.21	36,51,54,58	0
4	EDO	A	506	4/4	0.75	0.13	52,54,56,62	0
2	SO4	A	502	5/5	0.77	0.12	88,91,95,97	0
3	C8E	A	504	11/21	0.79	0.15	55,59,67,67	0
3	C8E	D	201	17/21	0.79	0.16	48,63,92,93	0
3	C8E	A	503	7/21	0.81	0.16	57,62,70,76	0
3	C8E	B	205	21/21	0.82	0.17	32,59,74,75	0
2	SO4	D	202	5/5	0.85	0.14	44,46,48,52	0
3	C8E	A	505	21/21	0.85	0.15	35,55,63,70	0
3	C8E	C	200	15/21	0.85	0.14	34,50,64,69	0
3	C8E	B	201	21/21	0.88	0.11	28,37,46,56	0
5	LBN	B	202	35/52	0.88	0.13	27,49,79,84	0
4	EDO	B	207	4/4	0.89	0.12	47,52,52,55	0
2	SO4	A	501	5/5	0.93	0.09	36,41,44,50	0

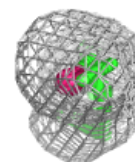
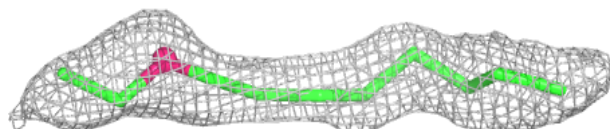
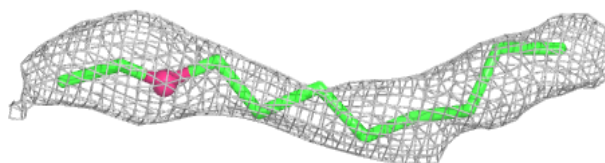
The following is a graphical depiction of the model fit to experimental electron density of all instances of the Ligand of Interest. In addition, ligands with molecular weight > 250 and outliers as shown on the geometry validation Tables will also be included. Each fit is shown from different orientation to approximate a three-dimensional view.

**Electron density around C8E B 203:**

$2mF_o-DF_c$  (at 0.7 rmsd) in gray  
 $mF_o-DF_c$  (at 3 rmsd) in purple (negative)  
and green (positive)

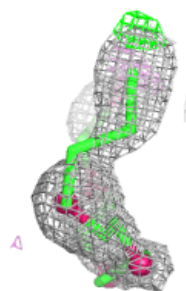
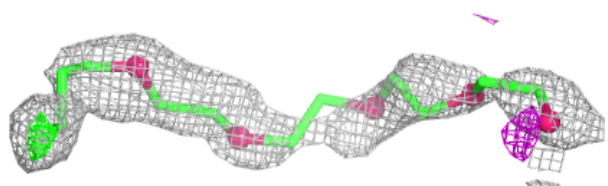
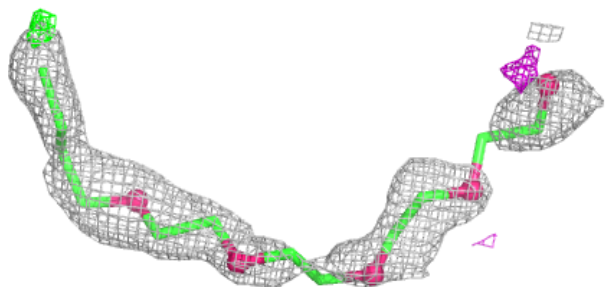
**Electron density around C8E A 504:**

$2mF_o-DF_c$  (at 0.7 rmsd) in gray  
 $mF_o-DF_c$  (at 3 rmsd) in purple (negative)  
and green (positive)

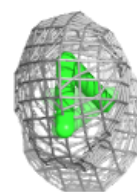
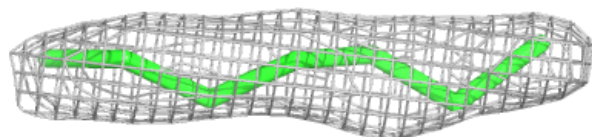
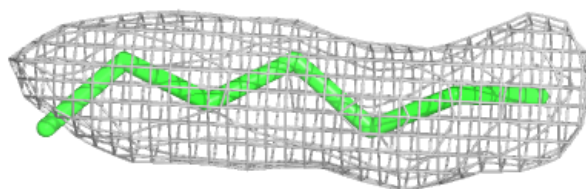


**Electron density around C8E D 201:**

$2mF_o-DF_c$  (at 0.7 rmsd) in gray  
 $mF_o-DF_c$  (at 3 rmsd) in purple (negative)  
and green (positive)

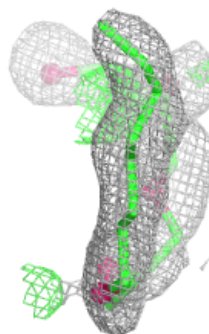
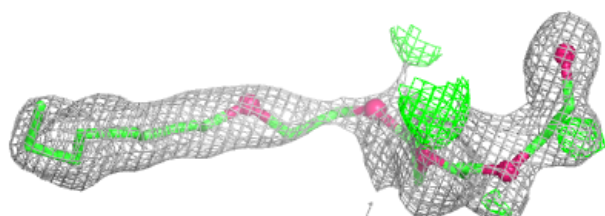
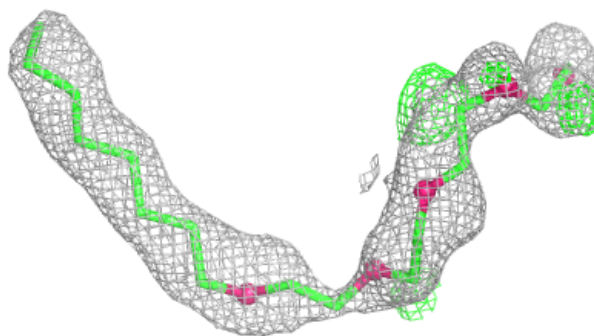
**Electron density around C8E A 503:**

$2mF_o-DF_c$  (at 0.7 rmsd) in gray  
 $mF_o-DF_c$  (at 3 rmsd) in purple (negative)  
and green (positive)

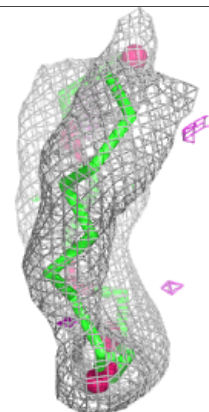
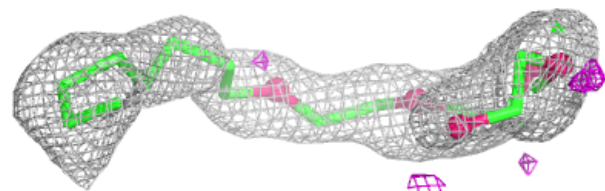
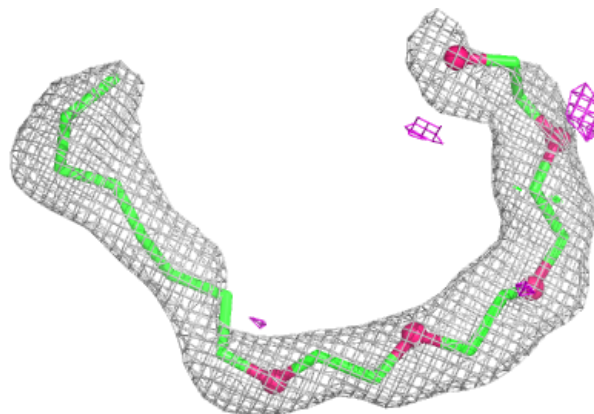


**Electron density around C8E B 205:**

$2mF_o-DF_c$  (at 0.7 rmsd) in gray  
 $mF_o-DF_c$  (at 3 rmsd) in purple (negative)  
and green (positive)

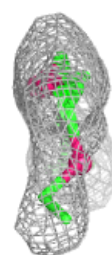
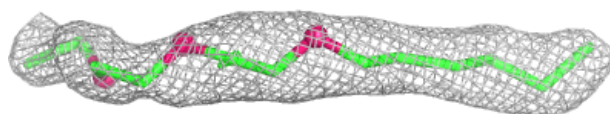
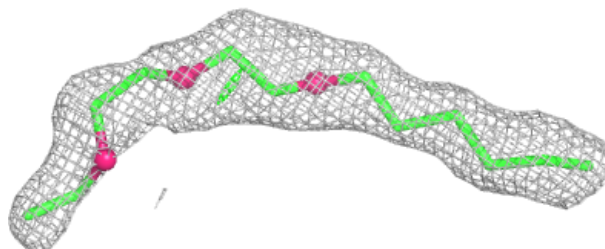
**Electron density around C8E A 505:**

$2mF_o-DF_c$  (at 0.7 rmsd) in gray  
 $mF_o-DF_c$  (at 3 rmsd) in purple (negative)  
and green (positive)

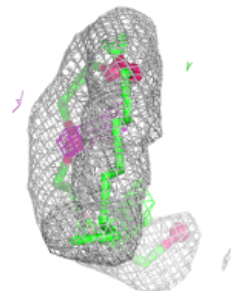
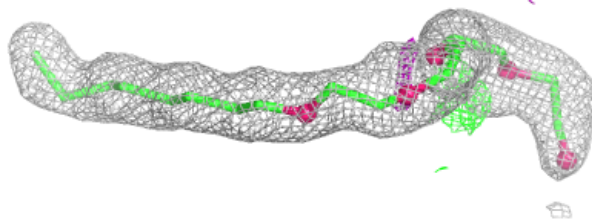
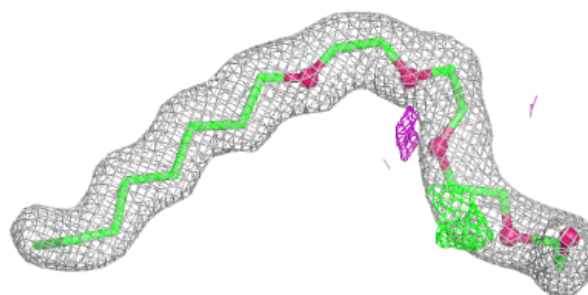


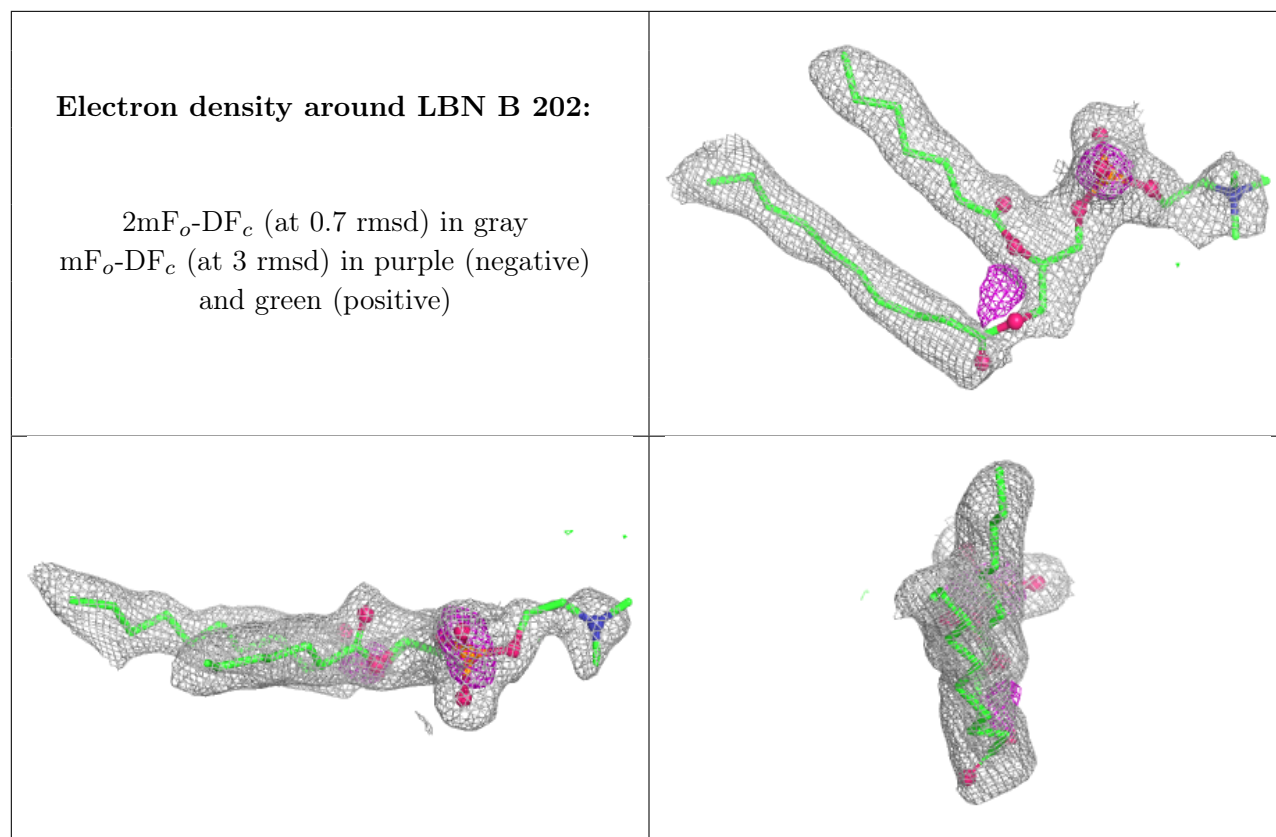
**Electron density around C8E C 200:**

$2mF_o-DF_c$  (at 0.7 rmsd) in gray  
 $mF_o-DF_c$  (at 3 rmsd) in purple (negative)  
and green (positive)

**Electron density around C8E B 201:**

$2mF_o-DF_c$  (at 0.7 rmsd) in gray  
 $mF_o-DF_c$  (at 3 rmsd) in purple (negative)  
and green (positive)





## 6.5 Other polymers [i](#)

There are no such residues in this entry.