



# Full wwPDB X-ray Structure Validation Report ⓘ

Mar 10, 2026 – 01:09 AM UTC

PDB ID : 6UWP / pdb\_00006uwp  
Title : BACE-1 in complex with compound #32  
Authors : Hendle, J.; Timm, D.E.  
Deposited on : 2019-11-05  
Resolution : 1.29 Å(reported)

This is a Full wwPDB X-ray Structure Validation Report for a publicly released PDB entry.

We welcome your comments at [validation@mail.wwpdb.org](mailto:validation@mail.wwpdb.org)

A user guide is available at

<https://www.wwpdb.org/validation/2017/XrayValidationReportHelp>

with specific help available everywhere you see the ⓘ symbol.

The types of validation reports are described at

<http://www.wwpdb.org/validation/2017/FAQs#types>.

---

The following versions of software and data (see [references ⓘ](#)) were used in the production of this report:

MolProbity : 4-5-2 with Phenix2.0  
Mogul : **NOT EXECUTED**  
Xtrriage (Phenix) : 2.0  
EDS : **NOT EXECUTED**  
Buster-report : **NOT EXECUTED**  
Percentile statistics : 20250101.v01 (using entries in the PDB archive January 1st 2025)  
Ideal geometry (proteins) : Engh & Huber (2001)  
Ideal geometry (DNA, RNA) : Parkinson et al. (1996)  
Validation Pipeline (wwPDB-VP) : 2.49

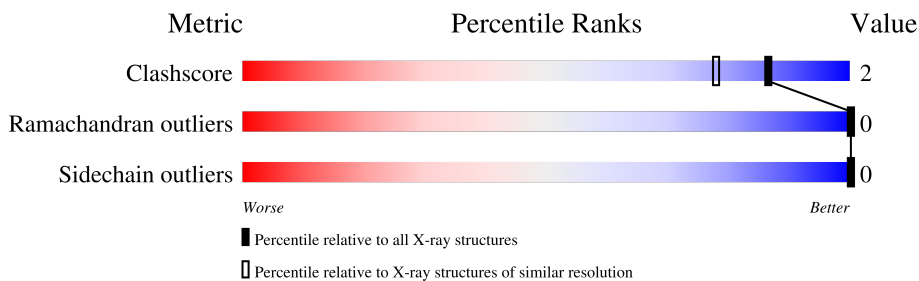
# 1 Overall quality at a glance

The following experimental techniques were used to determine the structure:

*X-RAY DIFFRACTION*

The reported resolution of this entry is 1.29 Å.

Percentile scores (ranging between 0-100) for global validation metrics of the entry are shown in the following graphic. The table shows the number of entries on which the scores are based.



Metric	Whole archive (#Entries)	Similar resolution (#Entries, resolution range(Å))
Clashscore	190562	1595 (1.30-1.30)
Ramachandran outliers	187476	1551 (1.30-1.30)
Sidechain outliers	187428	1551 (1.30-1.30)

The table below summarises the geometric issues observed across the polymeric chains and their fit to the electron density. The red, orange, yellow and green segments of the lower bar indicate the fraction of residues that contain outliers for  $\geq 3$ , 2, 1 and 0 types of geometric quality criteria respectively. A grey segment represents the fraction of residues that are not modelled. The numeric value for each fraction is indicated below the corresponding segment, with a dot representing fractions  $\leq 5\%$ .

Note EDS was not executed.

Mol	Chain	Length	Quality of chain
1	A	442	
1	B	442	

## 2 Entry composition i

There are 5 unique types of molecules in this entry. The entry contains 7564 atoms, of which 0 are hydrogens and 0 are deuteriums.

In the tables below, the ZeroOcc column contains the number of atoms modelled with zero occupancy, the AltConf column contains the number of residues with at least one atom in alternate conformation and the Trace column contains the number of residues modelled with at most 2 atoms.

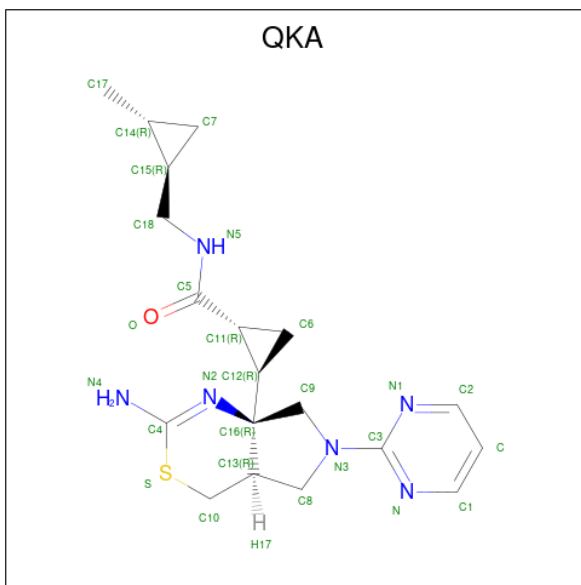
- Molecule 1 is a protein called Beta-secretase 1.

Mol	Chain	Residues	Atoms					ZeroOcc	AltConf	Trace
			Total	C	N	O	S			
1	A	393	Total 3248	C 2083	N 540	O 609	S 16	0	26	0
1	B	387	Total 3176	C 2039	N 523	O 598	S 16	0	22	0

There are 2 discrepancies between the modelled and reference sequences:

Chain	Residue	Modelled	Actual	Comment	Reference
A	-48	MET	-	expression tag	UNP P56817
B	-48	MET	-	expression tag	UNP P56817

- Molecule 2 is (1R,2R)-2-[(4aR,7aR)-2-amino-6-(pyrimidin-2-yl)-4a,5,6,7-tetrahydropyrrolo[3,4-d][1,3]thiazin-7a(4H)-yl]-N-[(1R,2R)-2-methylcyclopropylmethyl]cyclopropane-1-carboxamide (CCD ID: QKA) (formula: C<sub>19</sub>H<sub>26</sub>N<sub>6</sub>O<sub>5</sub>) (labeled as "Ligand of Interest" by depositor).



Mol	Chain	Residues	Atoms					ZeroOcc	AltConf
2	A	1	Total	C	N	O	S	0	0
			27	19	6	1	1		
2	B	1	Total	C	N	O	S	0	0
			27	19	6	1	1		

- Molecule 3 is GLYCEROL (CCD ID: GOL) (formula: C<sub>3</sub>H<sub>8</sub>O<sub>3</sub>).



Mol	Chain	Residues	Atoms			ZeroOcc	AltConf
3	A	1	Total	C	O	0	0
			6	3	3		
3	A	1	Total	C	O	0	0
			6	3	3		
3	A	1	Total	C	O	0	0
			6	3	3		
3	B	1	Total	C	O	0	0
			6	3	3		
3	B	1	Total	C	O	0	0
			6	3	3		
3	B	1	Total	C	O	0	0
			6	3	3		

- Molecule 4 is SULFATE ION (CCD ID: SO4) (formula: O<sub>4</sub>S).



Mol	Chain	Residues	Atoms			ZeroOcc	AltConf
4	A	1	Total	O	S	0	0
			5	4	1		
4	B	1	Total	O	S	0	0
			5	4	1		
4	B	1	Total	O	S	0	0
			5	4	1		
4	B	1	Total	O	S	0	0
			5	4	1		

- Molecule 5 is water.

Mol	Chain	Residues	Atoms		ZeroOcc	AltConf
5	A	537	Total	O	0	6
			540	540		
5	B	488	Total	O	0	6
			490	490		



## 4 Data and refinement statistics

EDS was not executed - this section is therefore incomplete.

Property	Value	Source
Space group	P 1 21 1	Depositor
Cell constants a, b, c, $\alpha$ , $\beta$ , $\gamma$	54.81Å 86.47Å 109.38Å 90.00° 100.99° 90.00°	Depositor
Resolution (Å)	30.00 – 1.29	Depositor
% Data completeness (in resolution range)	97.7 (30.00-1.29)	Depositor
$R_{merge}$	0.09	Depositor
$R_{sym}$	(Not available)	Depositor
$\langle I/\sigma(I) \rangle$ <sup>1</sup>	2.25 (at 1.29Å)	Xtrriage
Refinement program	REFMAC 5.8.0103	Depositor
R, $R_{free}$	0.134 , 0.155	Depositor
Wilson B-factor (Å <sup>2</sup> )	10.2	Xtrriage
Anisotropy	0.421	Xtrriage
L-test for twinning <sup>2</sup>	$\langle  L  \rangle = 0.49$ , $\langle L^2 \rangle = 0.32$	Xtrriage
Estimated twinning fraction	No twinning to report.	Xtrriage
Total number of atoms	7564	wwPDB-VP
Average B, all atoms (Å <sup>2</sup> )	16.0	wwPDB-VP

Xtrriage's analysis on translational NCS is as follows: *The largest off-origin peak in the Patterson function is 4.29% of the height of the origin peak. No significant pseudotranslation is detected.*

<sup>1</sup> Intensities estimated from amplitudes.

<sup>2</sup> Theoretical values of  $\langle |L| \rangle$ ,  $\langle L^2 \rangle$  for acentric reflections are 0.5, 0.333 respectively for untwinned datasets, and 0.375, 0.2 for perfectly twinned datasets.

## 5 Model quality [i](#)

### 5.1 Standard geometry [i](#)

Bond lengths and bond angles in the following residue types are not validated in this section: QKA, GOL, SO4

The Z score for a bond length (or angle) is the number of standard deviations the observed value is removed from the expected value. A bond length (or angle) with  $|Z| > 5$  is considered an outlier worth inspection. RMSZ is the root-mean-square of all Z scores of the bond lengths (or angles).

Mol	Chain	Bond lengths		Bond angles	
		RMSZ	# Z  >5	RMSZ	# Z  >5
1	A	0.46	0/3372	0.79	0/4574
1	B	0.45	0/3293	0.80	0/4474
All	All	0.45	0/6665	0.79	0/9048

Chiral center outliers are detected by calculating the chiral volume of a chiral center and verifying if the center is modelled as a planar moiety or with the opposite hand. A planarity outlier is detected by checking planarity of atoms in a peptide group, atoms in a mainchain group or atoms of a sidechain that are expected to be planar.

Mol	Chain	#Chirality outliers	#Planarity outliers
1	A	0	1

There are no bond length outliers.

There are no bond angle outliers.

There are no chirality outliers.

All (1) planarity outliers are listed below:

Mol	Chain	Res	Type	Group
1	A	-5	ARG	Sidechain

### 5.2 Too-close contacts [i](#)

In the following table, the Non-H and H(model) columns list the number of non-hydrogen atoms and hydrogen atoms in the chain respectively. The H(added) column lists the number of hydrogen atoms added and optimized by MolProbity. The Clashes column lists the number of clashes within the asymmetric unit, whereas Symm-Clashes lists symmetry-related clashes.

Mol	Chain	Non-H	H(model)	H(added)	Clashes	Symm-Clashes
1	A	3248	0	3206	14	0
1	B	3176	0	3121	13	0
2	A	27	0	0	0	0
2	B	27	0	0	0	0
3	A	18	0	24	0	0
3	B	18	0	24	0	0
4	A	5	0	0	0	0
4	B	15	0	0	0	0
5	A	540	0	0	3	0
5	B	490	0	0	3	0
All	All	7564	0	6375	27	0

The all-atom clashscore is defined as the number of clashes found per 1000 atoms (including hydrogen atoms). The all-atom clashscore for this structure is 2.

All (27) close contacts within the same asymmetric unit are listed below, sorted by their clash magnitude.

Atom-1	Atom-2	Interatomic distance (Å)	Clash overlap (Å)
1:B:64[A]:ARG:HD3	5:B:594:HOH:O	1.79	0.82
1:A:166:VAL:HG11	5:A:517:HOH:O	1.80	0.80
1:B:300:ILE:HD13	1:B:337[A]:ILE:HD12	1.72	0.72
1:A:65[B]:LYS:HG3	1:A:80:LEU:HD12	1.81	0.63
1:B:77:GLU:HG2	1:B:104:GLU:HB2	1.89	0.55
1:B:300:ILE:HD13	1:B:337[A]:ILE:CD1	2.37	0.53
1:A:364[B]:GLU:HB3	5:A:691[B]:HOH:O	2.08	0.53
1:A:163:GLN:HA	1:A:166:VAL:HG12	1.91	0.52
1:A:300:ILE:HD13	1:A:337[A]:ILE:HD12	1.90	0.52
1:A:199:TYR:HB3	1:A:352[A]:ILE:HD11	1.92	0.52
1:B:238:LYS:HA	1:B:326:GLN:HG3	1.92	0.50
1:A:300:ILE:HD13	1:A:337[A]:ILE:CD1	2.42	0.49
1:A:367[B]:THR:HG22	1:A:368:ALA:O	2.12	0.49
1:B:380:GLU:HG2	5:B:860:HOH:O	2.13	0.48
1:A:360:HIS:CE1	1:A:367[B]:THR:HG23	2.49	0.48
1:B:199:TYR:HB3	1:B:352[A]:ILE:HD11	1.96	0.46
1:B:241:PHE:CZ	1:B:245[A]:VAL:HG21	2.50	0.46
1:A:142[B]:LYS:HE3	1:A:142[B]:LYS:HB2	1.76	0.43
1:B:125:GLU:CD	1:B:195:ARG:HH22	2.25	0.43
1:B:110:ILE:HB	1:B:113:SER:HB3	2.02	0.42
1:A:197:TRP:CG	1:A:198:TYR:H	2.39	0.41
1:B:222:TYR:HA	1:B:223:ASP:HA	1.91	0.41
1:A:142[A]:LYS:HG3	5:A:730:HOH:O	2.21	0.40
1:A:294:GLN:O	1:A:379:MET:HE1	2.21	0.40

*Continued on next page...*

Continued from previous page...

Atom-1	Atom-2	Interatomic distance (Å)	Clash overlap (Å)
1:B:64[B]:ARG:HD3	5:B:594:HOH:O	2.21	0.40

There are no symmetry-related clashes.

## 5.3 Torsion angles [i](#)

### 5.3.1 Protein backbone [i](#)

In the following table, the Percentiles column shows the percent Ramachandran outliers of the chain as a percentile score with respect to all X-ray entries followed by that with respect to entries of similar resolution.

The Analysed column shows the number of residues for which the backbone conformation was analysed, and the total number of residues.

Mol	Chain	Analysed	Favoured	Allowed	Outliers	Percentiles	
1	A	417/442 (94%)	410 (98%)	7 (2%)	0	100	100
1	B	407/442 (92%)	403 (99%)	4 (1%)	0	100	100
All	All	824/884 (93%)	813 (99%)	11 (1%)	0	100	100

There are no Ramachandran outliers to report.

### 5.3.2 Protein sidechains [i](#)

In the following table, the Percentiles column shows the percent sidechain outliers of the chain as a percentile score with respect to all X-ray entries followed by that with respect to entries of similar resolution.

The Analysed column shows the number of residues for which the sidechain conformation was analysed, and the total number of residues.

Mol	Chain	Analysed	Rotameric	Outliers	Percentiles	
1	A	358/373 (96%)	358 (100%)	0	100	100
1	B	350/373 (94%)	350 (100%)	0	100	100
All	All	708/746 (95%)	708 (100%)	0	100	100

There are no protein residues with a non-rotameric sidechain to report.

Sometimes sidechains can be flipped to improve hydrogen bonding and reduce clashes. All (7) such sidechains are listed below:

Mol	Chain	Res	Type
1	A	12	GLN
1	A	211	GLN
1	A	326	GLN
1	A	385	ASN
1	B	53	GLN
1	B	233	ASN
1	B	385	ASN

### 5.3.3 RNA [i](#)

There are no RNA molecules in this entry.

### 5.4 Non-standard residues in protein, DNA, RNA chains [i](#)

Mogul was not executed - this section is therefore empty.

### 5.5 Carbohydrates [i](#)

Mogul was not executed - this section is therefore empty.

### 5.6 Ligand geometry [i](#)

Mogul was not executed - this section is therefore empty.

### 5.7 Other polymers [i](#)

Mogul was not executed - this section is therefore empty.

### 5.8 Polymer linkage issues [i](#)

There are no chain breaks in this entry.

## 6 Fit of model and data [i](#)

### 6.1 Protein, DNA and RNA chains [i](#)

EDS was not executed - this section is therefore empty.

### 6.2 Non-standard residues in protein, DNA, RNA chains [i](#)

EDS was not executed - this section is therefore empty.

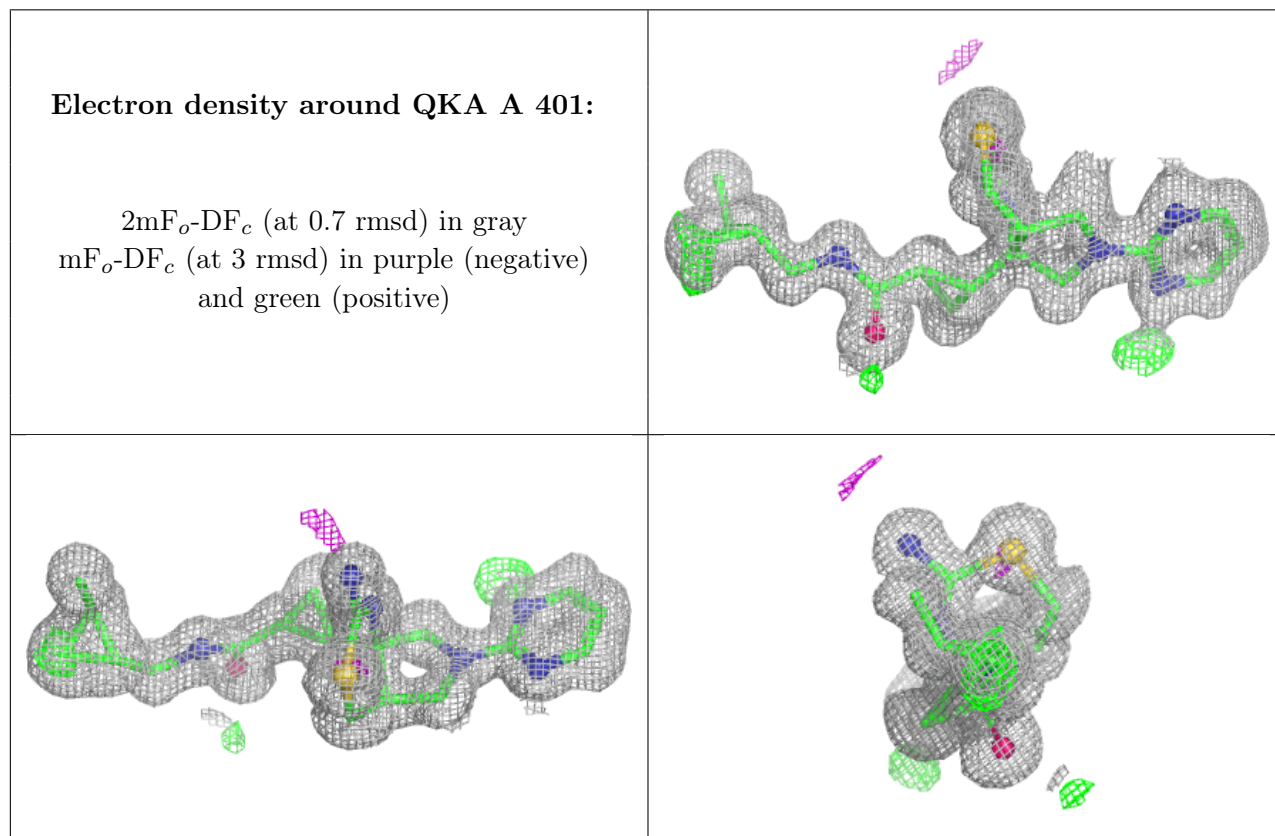
### 6.3 Carbohydrates [i](#)

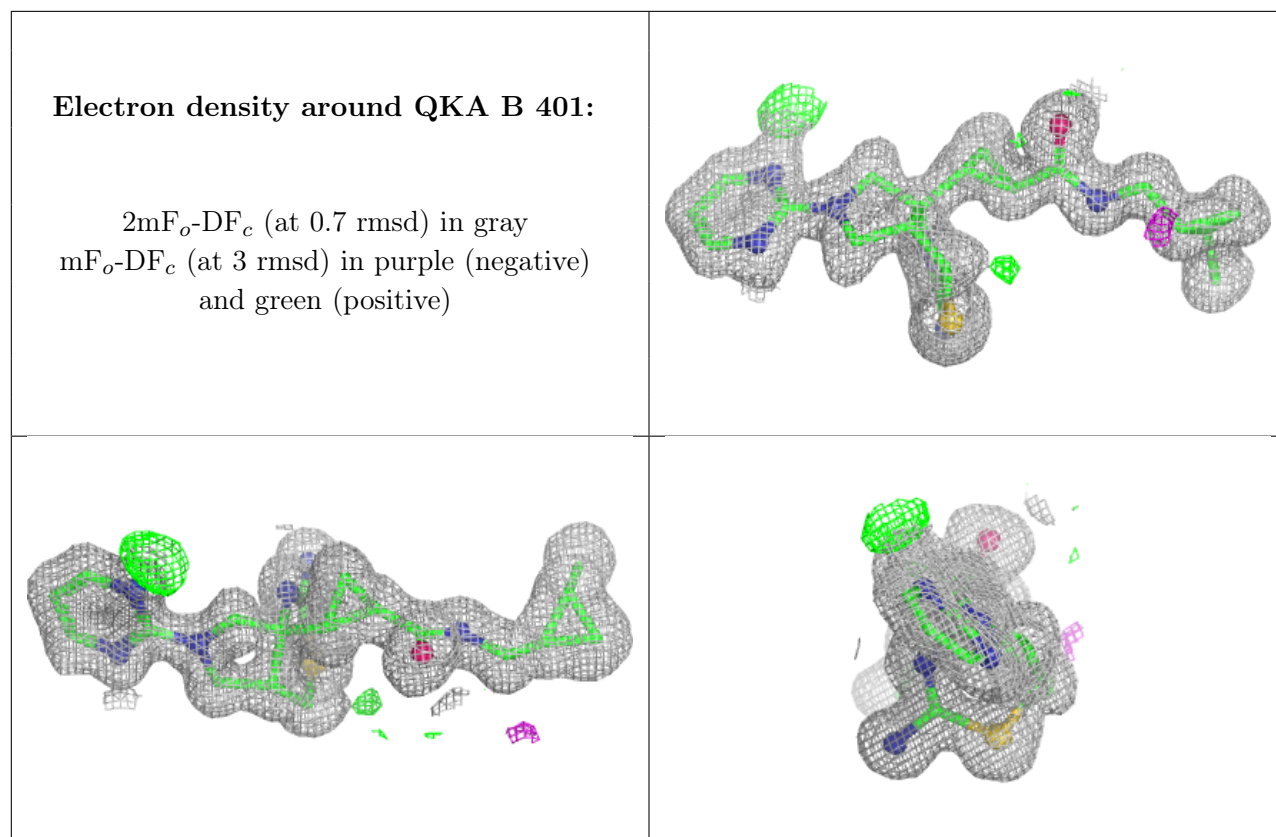
EDS was not executed - this section is therefore empty.

### 6.4 Ligands [i](#)

EDS was not executed - this section is therefore empty.

The following is a graphical depiction of the model fit to experimental electron density of all instances of the Ligand of Interest. In addition, ligands with molecular weight > 250 and outliers as shown on the geometry validation Tables will also be included. Each fit is shown from different orientation to approximate a three-dimensional view.





## 6.5 Other polymers [i](#)

EDS was not executed - this section is therefore empty.