



Full wwPDB X-ray Structure Validation Report ⓘ

Mar 9, 2026 – 04:15 AM UTC

PDB ID : 6UOB / pdb_00006uob
Title : Crystal structure of Danio rerio histone deacetylase 6 catalytic domain 1 (CD1)
K330L mutant complexed with Resminostat
Authors : Osko, J.D.; Christianson, D.W.
Deposited on : 2019-10-14
Resolution : 1.58 Å(reported)

This is a Full wwPDB X-ray Structure Validation Report for a publicly released PDB entry.

We welcome your comments at validation@mail.wwpdb.org

A user guide is available at

<https://www.wwpdb.org/validation/2017/XrayValidationReportHelp>

with specific help available everywhere you see the ⓘ symbol.

The types of validation reports are described at

<http://www.wwpdb.org/validation/2017/FAQs#types>.

The following versions of software and data (see [references ⓘ](#)) were used in the production of this report:

MolProbity : 4-5-2 with Phenix2.0
Mogul : 2022.3.0, CSD as543be (2022)
Xtriage (Phenix) : 2.0
EDS : 3.0
Buster-report : wwPDB partial adaption of 1.1.7 (2018)
Percentile statistics : 20250101.v01 (using entries in the PDB archive January 1st 2025)
CCP4 : 9.0.010 (Gargrove)
Density-Fitness : 1.0.12
Ideal geometry (proteins) : Engh & Huber (2001)
Ideal geometry (DNA, RNA) : Parkinson et al. (1996)
Validation Pipeline (wwPDB-VP) : 2.49

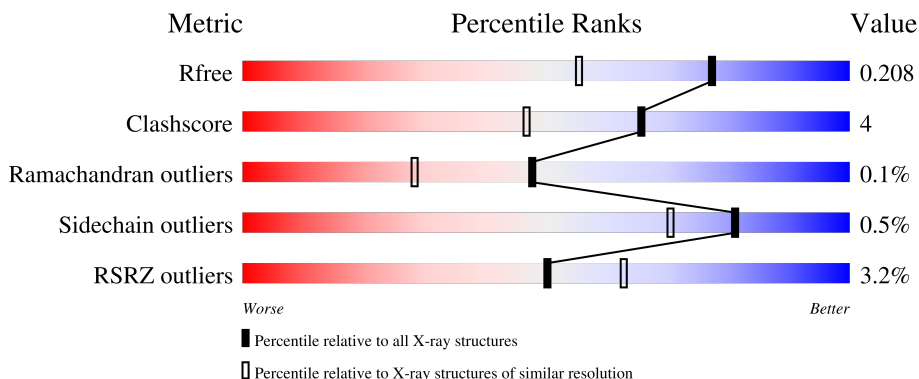
1 Overall quality at a glance

The following experimental techniques were used to determine the structure:

X-RAY DIFFRACTION

The reported resolution of this entry is 1.58 Å.

Percentile scores (ranging between 0-100) for global validation metrics of the entry are shown in the following graphic. The table shows the number of entries on which the scores are based.



Metric	Whole archive (#Entries)	Similar resolution (#Entries, resolution range(Å))
R_{free}	180053	1094 (1.58-1.58)
Clashscore	190562	1105 (1.58-1.58)
Ramachandran outliers	187476	1082 (1.58-1.58)
Sidechain outliers	187428	1081 (1.58-1.58)
RSRZ outliers	180081	1094 (1.58-1.58)

The table below summarises the geometric issues observed across the polymeric chains and their fit to the electron density. The red, orange, yellow and green segments of the lower bar indicate the fraction of residues that contain outliers for ≥ 3 , 2, 1 and 0 types of geometric quality criteria respectively. A grey segment represents the fraction of residues that are not modelled. The numeric value for each fraction is indicated below the corresponding segment, with a dot representing fractions $\leq 5\%$. The upper red bar (where present) indicates the fraction of residues that have poor fit to the electron density. The numeric value is given above the bar.

Mol	Chain	Length	Quality of chain
1	A	366	
1	B	366	

The following table lists non-polymeric compounds, carbohydrate monomers and non-standard residues in protein, DNA, RNA chains that are outliers for geometric or electron-density-fit criteria:

Mol	Type	Chain	Res	Chirality	Geometry	Clashes	Electron density
6	EDO	B	505	-	-	X	-

2 Entry composition i

There are 7 unique types of molecules in this entry. The entry contains 6247 atoms, of which 57 are hydrogens and 0 are deuteriums.

In the tables below, the ZeroOcc column contains the number of atoms modelled with zero occupancy, the AltConf column contains the number of residues with at least one atom in alternate conformation and the Trace column contains the number of residues modelled with at most 2 atoms.

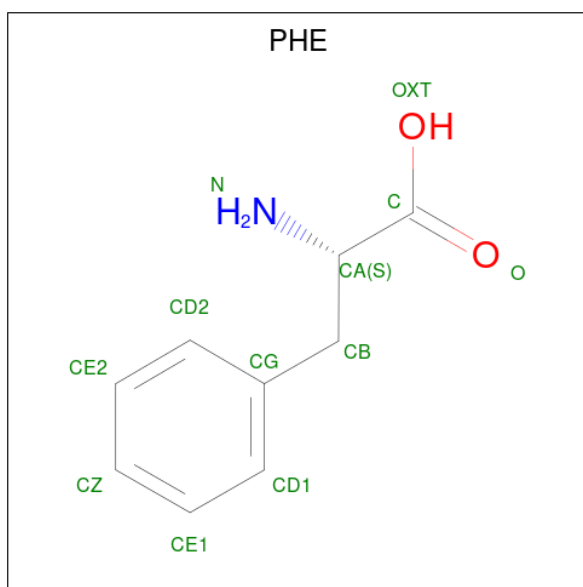
- Molecule 1 is a protein called Histone deacetylase 6.

Mol	Chain	Residues	Atoms					ZeroOcc	AltConf	Trace
			Total	C	N	O	S			
1	A	358	2813	1783	476	534	20	0	12	0
1	B	357	2779	1763	466	530	20	0	6	0

There are 14 discrepancies between the modelled and reference sequences:

Chain	Residue	Modelled	Actual	Comment	Reference
A	54	SER	-	expression tag	UNP F8W4B7
A	55	ASN	-	expression tag	UNP F8W4B7
A	56	ALA	-	expression tag	UNP F8W4B7
A	57	GLY	-	expression tag	UNP F8W4B7
A	58	GLY	-	expression tag	UNP F8W4B7
A	59	SER	-	expression tag	UNP F8W4B7
A	330	LEU	LYS	engineered mutation	UNP F8W4B7
B	54	SER	-	expression tag	UNP F8W4B7
B	55	ASN	-	expression tag	UNP F8W4B7
B	56	ALA	-	expression tag	UNP F8W4B7
B	57	GLY	-	expression tag	UNP F8W4B7
B	58	GLY	-	expression tag	UNP F8W4B7
B	59	SER	-	expression tag	UNP F8W4B7
B	330	LEU	LYS	engineered mutation	UNP F8W4B7

- Molecule 2 is PHENYLALANINE (CCD ID: PHE) (formula: C₉H₁₁NO₂).



Mol	Chain	Residues	Atoms				ZeroOcc	AltConf
2	A	1	Total	C	N	O	0	0
			11	9	1	1		

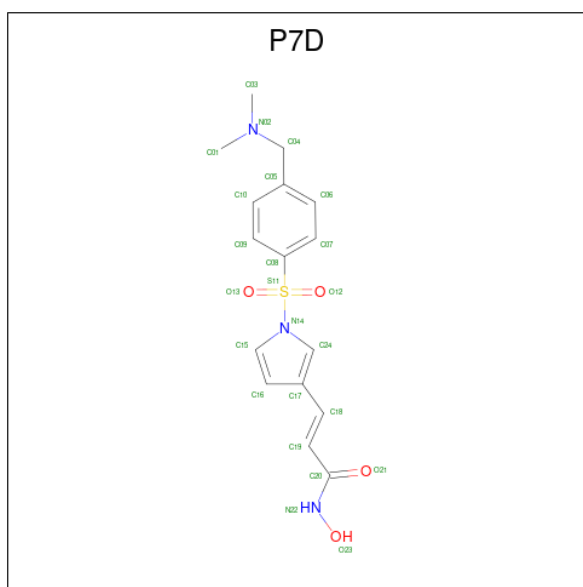
- Molecule 3 is ZINC ION (CCD ID: ZN) (formula: Zn).

Mol	Chain	Residues	Atoms		ZeroOcc	AltConf
3	A	1	Total	Zn	0	0
			1	1		
3	B	1	Total	Zn	0	0
			1	1		

- Molecule 4 is POTASSIUM ION (CCD ID: K) (formula: K).

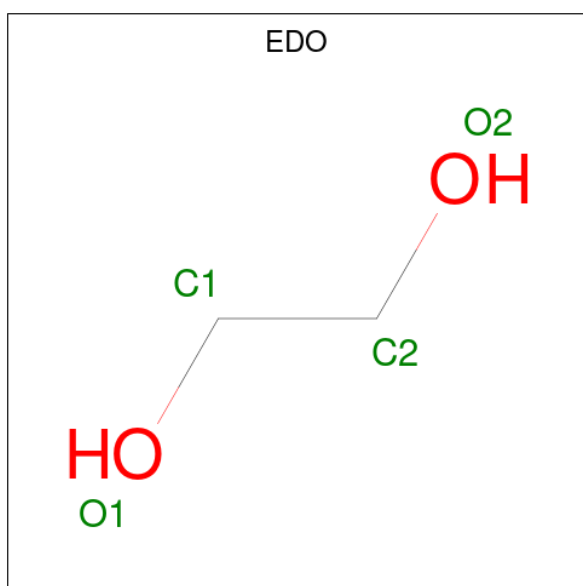
Mol	Chain	Residues	Atoms		ZeroOcc	AltConf
4	A	2	Total	K	0	0
			2	2		
4	B	2	Total	K	0	0
			2	2		

- Molecule 5 is Resminostat (CCD ID: P7D) (formula: C₁₆H₁₉N₃O₄S) (labeled as "Ligand of Interest" by depositor).



Mol	Chain	Residues	Atoms					ZeroOcc	AltConf	
			Total	C	H	N	O			S
5	A	1	86	32	38	6	8	2	0	1
5	B	1	43	16	19	3	4	1	0	0

- Molecule 6 is 1,2-ETHANEDIOL (CCD ID: EDO) (formula: C₂H₆O₂).



Mol	Chain	Residues	Atoms		ZeroOcc	AltConf
			Total	C O		
6	A	1	4	2 2	0	0
6	B	1	4	2 2	0	0

Continued on next page...

Continued from previous page...

Mol	Chain	Residues	Atoms			ZeroOcc	AltConf
6	B	1	Total	C	O	0	0
			4	2	2		

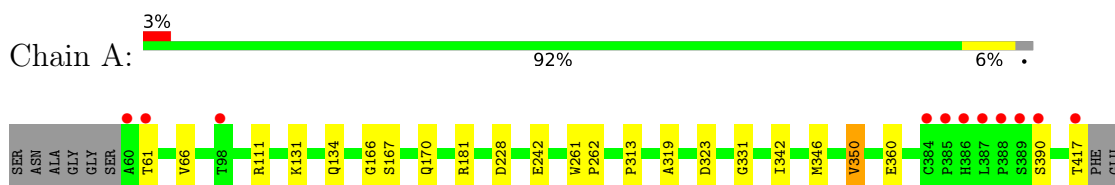
- Molecule 7 is water.

Mol	Chain	Residues	Atoms		ZeroOcc	AltConf
7	A	264	Total	O	0	0
			264	264		
7	B	233	Total	O	0	0
			233	233		

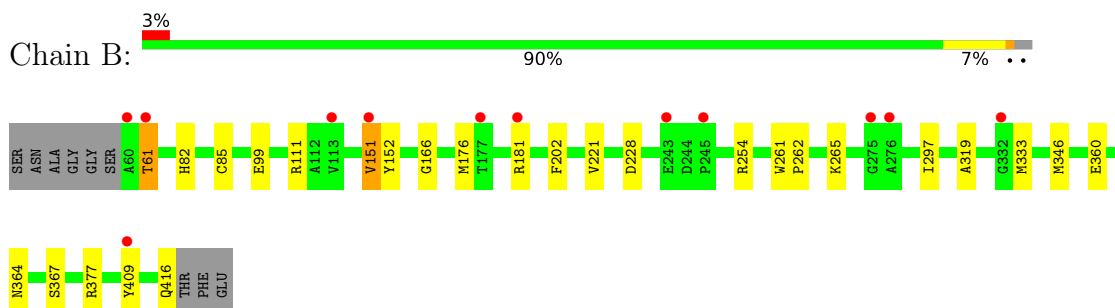
3 Residue-property plots [i](#)

These plots are drawn for all protein, RNA, DNA and oligosaccharide chains in the entry. The first graphic for a chain summarises the proportions of the various outlier classes displayed in the second graphic. The second graphic shows the sequence view annotated by issues in geometry and electron density. Residues are color-coded according to the number of geometric quality criteria for which they contain at least one outlier: green = 0, yellow = 1, orange = 2 and red = 3 or more. A red dot above a residue indicates a poor fit to the electron density ($RSRZ > 2$). Stretches of 2 or more consecutive residues without any outlier are shown as a green connector. Residues present in the sample, but not in the model, are shown in grey.

- Molecule 1: Histone deacetylase 6



- Molecule 1: Histone deacetylase 6



4 Data and refinement statistics

Property	Value	Source
Space group	P 21 21 21	Depositor
Cell constants a, b, c, α , β , γ	67.27Å 102.62Å 112.90Å 90.00° 90.00° 90.00°	Depositor
Resolution (Å)	56.45 – 1.58 56.45 – 1.58	Depositor EDS
% Data completeness (in resolution range)	99.4 (56.45-1.58) 99.4 (56.45-1.58)	Depositor EDS
R_{merge}	0.14	Depositor
R_{sym}	(Not available)	Depositor
$\langle I/\sigma(I) \rangle$ ¹	1.89 (at 1.58Å)	Xtrriage
Refinement program	PHENIX 1.11.1_2575, PHENIX 1.11.1_2575	Depositor
R, R_{free}	0.184 , 0.208 0.185 , 0.208	Depositor DCC
R_{free} test set	5221 reflections (4.85%)	wwPDB-VP
Wilson B-factor (Å ²)	16.3	Xtrriage
Anisotropy	0.523	Xtrriage
Bulk solvent k_{sol} (e/Å ³), B_{sol} (Å ²)	0.31 , 30.1	EDS
L-test for twinning ²	$\langle L \rangle = 0.49$, $\langle L^2 \rangle = 0.32$	Xtrriage
Estimated twinning fraction	No twinning to report.	Xtrriage
F_o, F_c correlation	0.96	EDS
Total number of atoms	6247	wwPDB-VP
Average B, all atoms (Å ²)	20.0	wwPDB-VP

Xtrriage's analysis on translational NCS is as follows: *The largest off-origin peak in the Patterson function is 5.28% of the height of the origin peak. No significant pseudotranslation is detected.*

¹Intensities estimated from amplitudes.

²Theoretical values of $\langle |L| \rangle$, $\langle L^2 \rangle$ for acentric reflections are 0.5, 0.333 respectively for untwinned datasets, and 0.375, 0.2 for perfectly twinned datasets.

5 Model quality [i](#)

5.1 Standard geometry [i](#)

Bond lengths and bond angles in the following residue types are not validated in this section: ZN, P7D, K, EDO

The Z score for a bond length (or angle) is the number of standard deviations the observed value is removed from the expected value. A bond length (or angle) with $|Z| > 5$ is considered an outlier worth inspection. RMSZ is the root-mean-square of all Z scores of the bond lengths (or angles).

Mol	Chain	Bond lengths		Bond angles	
		RMSZ	# Z >5	RMSZ	# Z >5
1	A	0.26	0/2889	0.50	0/3922
1	B	0.26	0/2852	0.50	0/3876
All	All	0.26	0/5741	0.50	0/7798

There are no bond length outliers.

There are no bond angle outliers.

There are no chirality outliers.

There are no planarity outliers.

5.2 Too-close contacts [i](#)

In the following table, the Non-H and H(model) columns list the number of non-hydrogen atoms and hydrogen atoms in the chain respectively. The H(added) column lists the number of hydrogen atoms added and optimized by MolProbity. The Clashes column lists the number of clashes within the asymmetric unit, whereas Symm-Clashes lists symmetry-related clashes.

Mol	Chain	Non-H	H(model)	H(added)	Clashes	Symm-Clashes
1	A	2813	0	2708	16	0
1	B	2779	0	2668	25	0
2	A	11	0	8	1	0
3	A	1	0	0	0	0
3	B	1	0	0	0	0
4	A	2	0	0	0	0
4	B	2	0	0	0	0
5	A	48	38	0	0	0
5	B	24	19	0	0	0
6	A	4	0	6	0	0
6	B	8	0	12	8	0

Continued on next page...

Continued from previous page...

Mol	Chain	Non-H	H(model)	H(added)	Clashes	Symm-Clashes
7	A	264	0	0	1	0
7	B	233	0	0	1	0
All	All	6190	57	5402	42	0

The all-atom clashscore is defined as the number of clashes found per 1000 atoms (including hydrogen atoms). The all-atom clashscore for this structure is 4.

All (42) close contacts within the same asymmetric unit are listed below, sorted by their clash magnitude.

Atom-1	Atom-2	Interatomic distance (Å)	Clash overlap (Å)
1:B:61:THR:H	1:B:181:ARG:HG3	1.43	0.80
1:B:82:HIS:O	6:B:505:EDO:H22	1.83	0.78
1:A:417:THR:C	2:A:501:PHE:N	2.46	0.73
1:B:61:THR:N	1:B:181:ARG:HG3	2.04	0.72
1:B:152:TYR:HB3	6:B:506:EDO:H12	1.75	0.69
6:B:506:EDO:H11	7:B:732:HOH:O	1.92	0.69
1:B:409:TYR:CE1	1:B:416:GLN:HA	2.30	0.66
1:B:85:CYS:HB3	6:B:505:EDO:H22	1.79	0.65
1:B:85:CYS:HB3	6:B:505:EDO:C2	2.29	0.63
1:B:111:ARG:O	1:B:166:GLY:HA3	2.01	0.59
1:A:319:ALA:HB1	1:A:360:GLU:HG3	1.86	0.57
1:A:131:LYS:O	1:A:134:GLN:HG2	2.05	0.56
1:B:151:VAL:HG23	1:B:202:PHE:H	1.69	0.56
1:B:254:ARG:HD2	1:B:333:MET:HE2	1.89	0.55
1:B:319:ALA:HB1	1:B:360:GLU:HG3	1.90	0.53
1:B:409:TYR:CZ	1:B:416:GLN:HG2	2.43	0.53
1:A:342:ILE:HG22	1:A:346:MET:HE3	1.91	0.52
1:A:111[A]:ARG:O	1:A:166:GLY:HA3	2.09	0.51
1:B:176:MET:HE2	1:B:221:VAL:CG2	2.42	0.50
1:B:151:VAL:O	6:B:506:EDO:H22	2.13	0.49
1:B:265:LYS:HD2	1:B:265:LYS:O	2.13	0.49
1:A:390:SER:HA	7:A:624:HOH:O	2.13	0.48
1:A:111[B]:ARG:O	1:A:166:GLY:HA3	2.11	0.48
1:B:85:CYS:CB	6:B:505:EDO:H21	2.44	0.48
1:A:261:TRP:CG	1:A:262:PRO:HA	2.48	0.48
1:A:111[A]:ARG:HD3	1:A:170:GLN:OE1	2.15	0.47
1:B:261:TRP:CG	1:B:262:PRO:HA	2.51	0.46
1:A:66:VAL:HG11	1:A:167[A]:SER:HB2	1.97	0.46
1:B:61:THR:H	1:B:181:ARG:CG	2.23	0.46
1:A:323:ASP:O	1:A:331:GLY:HA3	2.17	0.46
1:A:66:VAL:HG11	1:A:167[B]:SER:HB3	1.98	0.45

Continued on next page...

Continued from previous page...

Atom-1	Atom-2	Interatomic distance (Å)	Clash overlap (Å)
1:B:297:ILE:HG23	1:B:346:MET:HE1	1.98	0.45
1:B:409:TYR:CE1	1:B:416:GLN:HG2	2.52	0.45
1:A:313:PRO:HG2	1:A:350:VAL:HG13	1.99	0.44
1:B:85:CYS:CB	6:B:505:EDO:C2	2.95	0.44
1:B:176:MET:HE2	1:B:221:VAL:HG22	1.99	0.43
1:B:99:GLU:OE2	1:B:377[A]:ARG:NH2	2.51	0.43
1:B:228:ASP:HA	1:B:319:ALA:HB3	2.01	0.43
1:A:61:THR:HA	1:A:181:ARG:HG3	2.01	0.42
1:A:111[A]:ARG:HD3	1:A:170:GLN:CD	2.43	0.42
1:B:364:ASN:HB3	1:B:367:SER:HB2	2.03	0.41
1:A:228:ASP:HA	1:A:319:ALA:HB3	2.04	0.40

There are no symmetry-related clashes.

5.3 Torsion angles [i](#)

5.3.1 Protein backbone [i](#)

In the following table, the Percentiles column shows the percent Ramachandran outliers of the chain as a percentile score with respect to all X-ray entries followed by that with respect to entries of similar resolution.

The Analysed column shows the number of residues for which the backbone conformation was analysed, and the total number of residues.

Mol	Chain	Analysed	Favoured	Allowed	Outliers	Percentiles	
1	A	368/366 (100%)	353 (96%)	15 (4%)	0	100	100
1	B	361/366 (99%)	349 (97%)	11 (3%)	1 (0%)	36	20
All	All	729/732 (100%)	702 (96%)	26 (4%)	1 (0%)	48	28

All (1) Ramachandran outliers are listed below:

Mol	Chain	Res	Type
1	B	61	THR

5.3.2 Protein sidechains [i](#)

In the following table, the Percentiles column shows the percent sidechain outliers of the chain as a percentile score with respect to all X-ray entries followed by that with respect to entries of similar resolution.

The Analysed column shows the number of residues for which the sidechain conformation was analysed, and the total number of residues.

Mol	Chain	Analysed	Rotameric	Outliers	Percentiles	
1	A	304/308 (99%)	302 (99%)	2 (1%)	76	61
1	B	300/308 (97%)	299 (100%)	1 (0%)	86	79
All	All	604/616 (98%)	601 (100%)	3 (0%)	81	70

All (3) residues with a non-rotameric sidechain are listed below:

Mol	Chain	Res	Type
1	A	242	GLU
1	A	350	VAL
1	B	151	VAL

Sometimes sidechains can be flipped to improve hydrogen bonding and reduce clashes. All (3) such sidechains are listed below:

Mol	Chain	Res	Type
1	A	278	GLN
1	A	386	HIS
1	B	179	GLN

5.3.3 RNA [i](#)

There are no RNA molecules in this entry.

5.4 Non-standard residues in protein, DNA, RNA chains [i](#)

There are no non-standard protein/DNA/RNA residues in this entry.

5.5 Carbohydrates [i](#)

There are no oligosaccharides in this entry.

5.6 Ligand geometry [i](#)

Of 13 ligands modelled in this entry, 6 are monoatomic - leaving 7 for Mogul analysis.

In the following table, the Counts columns list the number of bonds (or angles) for which Mogul statistics could be retrieved, the number of bonds (or angles) that are observed in the model and

the number of bonds (or angles) that are defined in the Chemical Component Dictionary. The Link column lists molecule types, if any, to which the group is linked. The Z score for a bond length (or angle) is the number of standard deviations the observed value is removed from the expected value. A bond length (or angle) with $|Z| > 2$ is considered an outlier worth inspection. RMSZ is the root-mean-square of all Z scores of the bond lengths (or angles).

Mol	Type	Chain	Res	Link	Bond lengths			Bond angles		
					Counts	RMSZ	# Z > 2	Counts	RMSZ	# Z > 2
6	EDO	A	506	-	3,3,3	0.47	0	2,2,2	0.39	0
5	P7D	A	505[A]	3	24,25,25	1.75	4 (16%)	35,35,35	3.66	17 (48%)
5	P7D	A	505[B]	3	24,25,25	2.12	7 (29%)	35,35,35	3.38	15 (42%)
2	PHE	A	501	-	10,11,12	0.61	0	8,13,15	0.21	0
6	EDO	B	505	-	3,3,3	0.31	0	2,2,2	0.47	0
5	P7D	B	504	3	24,25,25	1.76	6 (25%)	35,35,35	3.41	16 (45%)
6	EDO	B	506	-	3,3,3	0.36	0	2,2,2	0.46	0

In the following table, the Chirals column lists the number of chiral outliers, the number of chiral centers analysed, the number of these observed in the model and the number defined in the Chemical Component Dictionary. Similar counts are reported in the Torsion and Rings columns. '-' means no outliers of that kind were identified.

Mol	Type	Chain	Res	Link	Chirals	Torsions	Rings
6	EDO	A	506	-	-	0/1/1/1	-
5	P7D	A	505[A]	3	-	5/23/23/23	0/2/2/2
5	P7D	A	505[B]	3	-	4/23/23/23	0/2/2/2
2	PHE	A	501	-	-	0/5/6/8	0/1/1/1
6	EDO	B	505	-	-	1/1/1/1	-
5	P7D	B	504	3	-	4/23/23/23	0/2/2/2
6	EDO	B	506	-	-	1/1/1/1	-

All (17) bond length outliers are listed below:

Mol	Chain	Res	Type	Atoms	Z	Observed(Å)	Ideal(Å)
5	A	505[B]	P7D	C15-N14	6.01	1.44	1.39
5	A	505[A]	P7D	C15-N14	5.31	1.43	1.39
5	B	504	P7D	C15-N14	4.91	1.43	1.39
5	A	505[B]	P7D	S11-N14	4.37	1.74	1.67
5	A	505[A]	P7D	C08-S11	-3.53	1.71	1.76
5	A	505[B]	P7D	C04-N02	3.49	1.56	1.46
5	B	504	P7D	C08-S11	-3.26	1.72	1.76
5	B	504	P7D	C04-N02	2.82	1.54	1.46
5	A	505[B]	P7D	C24-N14	2.61	1.44	1.39
5	A	505[A]	P7D	S11-N14	2.31	1.71	1.67

Continued on next page...

Continued from previous page...

Mol	Chain	Res	Type	Atoms	Z	Observed(Å)	Ideal(Å)
5	A	505[B]	P7D	C09-C10	2.22	1.42	1.38
5	B	504	P7D	C03-N02	2.20	1.52	1.46
5	A	505[B]	P7D	C04-C05	2.20	1.55	1.51
5	B	504	P7D	C19-C20	-2.18	1.43	1.48
5	B	504	P7D	O12-S11	-2.18	1.41	1.43
5	A	505[B]	P7D	C01-N02	2.09	1.52	1.46
5	A	505[A]	P7D	C24-N14	2.07	1.43	1.39

All (48) bond angle outliers are listed below:

Mol	Chain	Res	Type	Atoms	Z	Observed(°)	Ideal(°)
5	A	505[A]	P7D	C08-S11-N14	-9.87	93.39	104.53
5	A	505[B]	P7D	C15-N14-C24	-8.33	103.46	109.53
5	A	505[A]	P7D	C15-N14-C24	-7.64	103.96	109.53
5	A	505[A]	P7D	O21-C20-N22	-7.47	109.81	122.87
5	B	504	P7D	O21-C20-N22	-7.47	109.81	122.87
5	A	505[B]	P7D	O21-C20-N22	-7.47	109.82	122.87
5	B	504	P7D	C08-S11-N14	-7.42	96.16	104.53
5	B	504	P7D	C15-N14-C24	-7.10	104.36	109.53
5	A	505[A]	P7D	C19-C20-N22	7.05	126.85	114.41
5	A	505[B]	P7D	C19-C20-N22	7.00	126.76	114.41
5	A	505[B]	P7D	C09-C08-C07	-6.91	111.46	120.47
5	B	504	P7D	C19-C20-N22	6.37	125.64	114.41
5	A	505[A]	P7D	C09-C08-C07	-6.35	112.19	120.47
5	A	505[B]	P7D	C09-C08-S11	6.20	125.89	119.73
5	B	504	P7D	C09-C08-C07	-6.15	112.45	120.47
5	A	505[A]	P7D	C10-C09-C08	5.76	125.04	119.44
5	A	505[B]	P7D	C06-C07-C08	5.64	124.93	119.44
5	A	505[A]	P7D	C07-C08-S11	5.63	125.33	119.73
5	A	505[B]	P7D	C10-C09-C08	5.40	124.69	119.44
5	B	504	P7D	C09-C08-S11	5.40	125.10	119.73
5	B	504	P7D	C10-C09-C08	5.28	124.58	119.44
5	B	504	P7D	C06-C07-C08	5.13	124.43	119.44
5	A	505[A]	P7D	C06-C07-C08	4.52	123.84	119.44
5	A	505[A]	P7D	O12-S11-C08	4.41	113.59	108.10
5	B	504	P7D	C19-C18-C17	3.85	132.00	126.09
5	B	504	P7D	O13-S11-N14	3.33	108.94	105.52
5	A	505[B]	P7D	O12-S11-C08	3.27	112.17	108.10
5	A	505[A]	P7D	O13-S11-N14	3.15	108.75	105.52
5	A	505[A]	P7D	O13-S11-C08	3.04	111.88	108.10
5	A	505[B]	P7D	C07-C08-S11	2.92	122.63	119.73
5	A	505[B]	P7D	C17-C24-N14	2.89	112.11	109.44

Continued on next page...

Continued from previous page...

Mol	Chain	Res	Type	Atoms	Z	Observed(°)	Ideal(°)
5	A	505[B]	P7D	C24-N14-S11	2.81	129.33	124.42
5	B	504	P7D	C24-N14-S11	2.78	129.28	124.42
5	B	504	P7D	O13-S11-C08	2.64	111.39	108.10
5	B	504	P7D	C07-C08-S11	2.63	122.35	119.73
5	B	504	P7D	C18-C19-C20	-2.63	114.85	125.43
5	A	505[A]	P7D	C17-C24-N14	2.62	111.86	109.44
5	A	505[B]	P7D	C06-C05-C10	-2.52	114.48	118.23
5	A	505[A]	P7D	C09-C08-S11	2.52	122.23	119.73
5	B	504	P7D	O12-S11-C08	2.40	111.08	108.10
5	B	504	P7D	C06-C05-C10	-2.34	114.76	118.23
5	A	505[B]	P7D	O13-S11-O12	-2.33	115.96	119.59
5	A	505[A]	P7D	C15-N14-S11	2.27	127.37	125.29
5	A	505[A]	P7D	C24-N14-S11	2.26	128.36	124.42
5	A	505[A]	P7D	C19-C18-C17	2.08	129.29	126.09
5	A	505[A]	P7D	C06-C05-C10	-2.08	115.14	118.23
5	A	505[B]	P7D	C01-N02-C04	2.08	114.92	110.69
5	A	505[B]	P7D	C15-N14-S11	2.06	127.18	125.29

There are no chirality outliers.

All (15) torsion outliers are listed below:

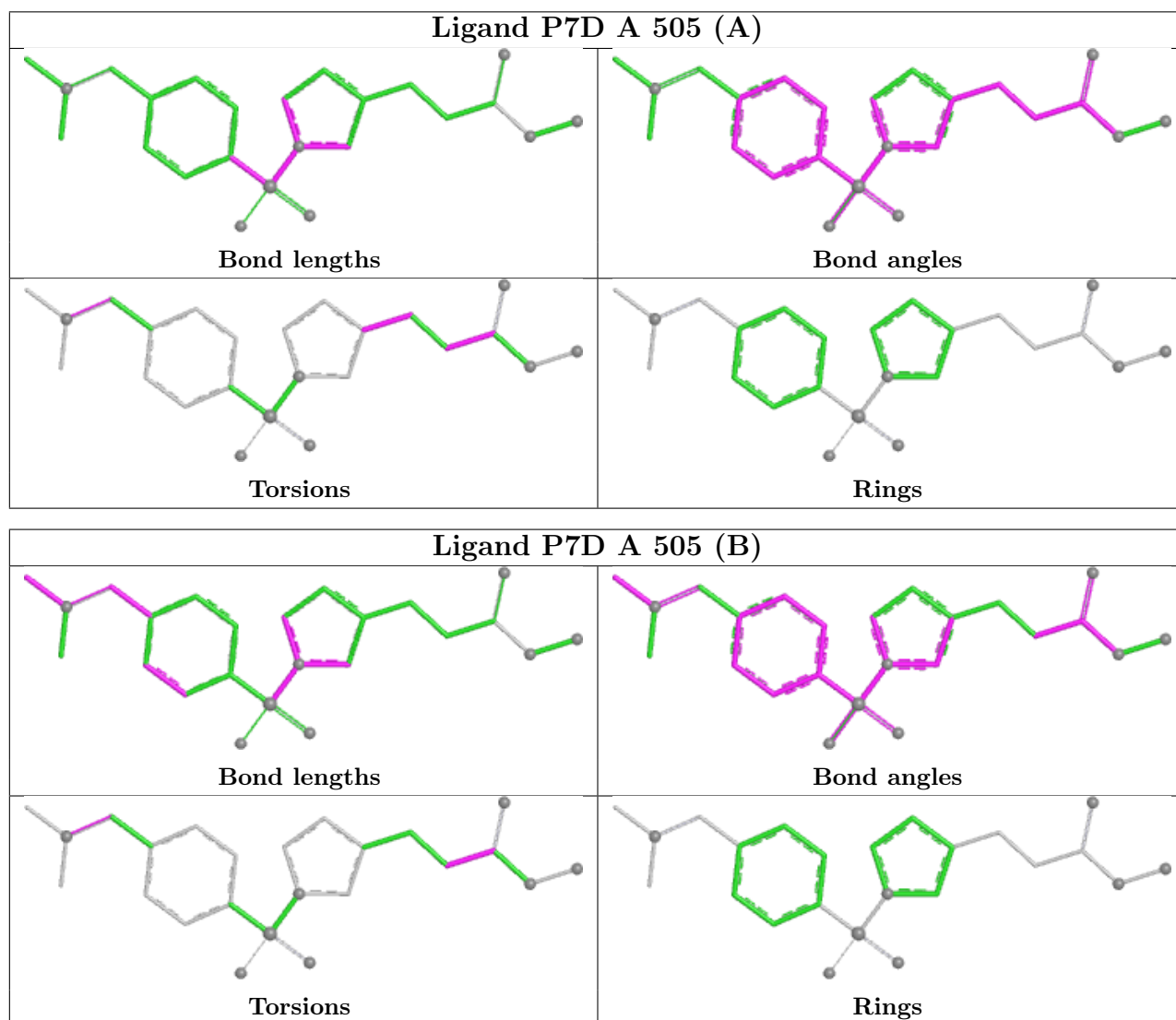
Mol	Chain	Res	Type	Atoms
5	A	505[A]	P7D	C24-C17-C18-C19
5	A	505[A]	P7D	C16-C17-C18-C19
5	A	505[A]	P7D	C18-C19-C20-N22
5	A	505[B]	P7D	C18-C19-C20-N22
5	A	505[B]	P7D	C05-C04-N02-C01
5	B	504	P7D	C24-C17-C18-C19
5	B	504	P7D	C16-C17-C18-C19
5	B	504	P7D	C18-C19-C20-N22
5	A	505[A]	P7D	C18-C19-C20-O21
5	A	505[B]	P7D	C18-C19-C20-O21
5	B	504	P7D	C18-C19-C20-O21
6	B	505	EDO	O1-C1-C2-O2
5	A	505[A]	P7D	C05-C04-N02-C03
5	A	505[B]	P7D	C05-C04-N02-C03
6	B	506	EDO	O1-C1-C2-O2

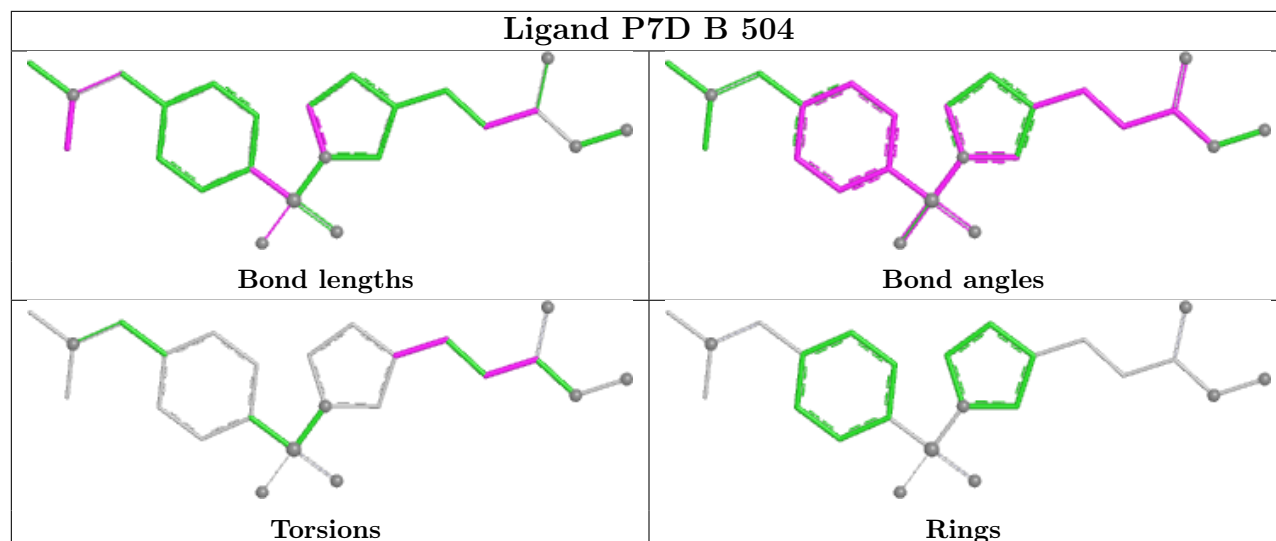
There are no ring outliers.

3 monomers are involved in 9 short contacts:

Mol	Chain	Res	Type	Clashes	Symm-Clashes
2	A	501	PHE	1	0
6	B	505	EDO	5	0
6	B	506	EDO	3	0

The following is a two-dimensional graphical depiction of Mogul quality analysis of bond lengths, bond angles, torsion angles, and ring geometry for all instances of the Ligand of Interest. In addition, ligands with molecular weight > 250 and outliers as shown on the validation Tables will also be included. For torsion angles, if less than 5% of the Mogul distribution of torsion angles is within 10 degrees of the torsion angle in question, then that torsion angle is considered an outlier. Any bond that is central to one or more torsion angles identified as an outlier by Mogul will be highlighted in the graph. For rings, the root-mean-square deviation (RMSD) between the ring in question and similar rings identified by Mogul is calculated over all ring torsion angles. If the average RMSD is greater than 60 degrees and the minimal RMSD between the ring in question and any Mogul-identified rings is also greater than 60 degrees, then that ring is considered an outlier. The outliers are highlighted in purple. The color gray indicates Mogul did not find sufficient equivalents in the CSD to analyse the geometry.





5.7 Other polymers [i](#)

There are no such residues in this entry.

5.8 Polymer linkage issues [i](#)

There are no chain breaks in this entry.

6 Fit of model and data

6.1 Protein, DNA and RNA chains

In the following table, the column labelled ‘#RSRZ > 2’ contains the number (and percentage) of RSRZ outliers, followed by percent RSRZ outliers for the chain as percentile scores relative to all X-ray entries and entries of similar resolution. The OWAB column contains the minimum, median, 95th percentile and maximum values of the occupancy-weighted average B-factor per residue. The column labelled ‘Q < 0.9’ lists the number of (and percentage) of residues with an average occupancy less than 0.9.

Mol	Chain	Analysed	<RSRZ>	#RSRZ>2		OWAB(Å ²)	Q<0.9
1	A	358/366 (97%)	0.07	11 (3%)	51 64	7, 16, 33, 54	12 (3%)
1	B	357/366 (97%)	0.40	12 (3%)	48 60	8, 19, 32, 52	6 (1%)
All	All	715/732 (97%)	0.24	23 (3%)	50 63	7, 18, 32, 54	18 (2%)

All (23) RSRZ outliers are listed below:

Mol	Chain	Res	Type	RSRZ
1	B	60	ALA	7.9
1	A	60	ALA	6.1
1	B	61	THR	6.1
1	A	417	THR	5.8
1	B	409	TYR	5.3
1	A	387	LEU	5.0
1	A	388	PRO	4.6
1	A	385	PRO	4.6
1	A	389	SER	4.5
1	A	61	THR	4.3
1	A	384	CYS	3.9
1	A	390	SER	3.6
1	B	276	ALA	3.6
1	B	275	GLY	3.3
1	B	332	GLY	2.9
1	A	386	HIS	2.8
1	B	177	THR	2.5
1	B	151	VAL	2.4
1	B	181	ARG	2.2
1	B	245	PRO	2.2
1	B	243	GLU	2.2
1	B	113	VAL	2.0
1	A	98	THR	2.0

6.2 Non-standard residues in protein, DNA, RNA chains [i](#)

There are no non-standard protein/DNA/RNA residues in this entry.

6.3 Carbohydrates [i](#)

There are no oligosaccharides in this entry.

6.4 Ligands [i](#)

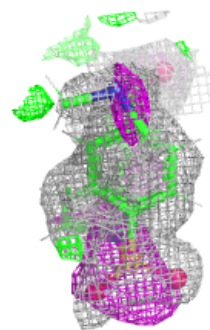
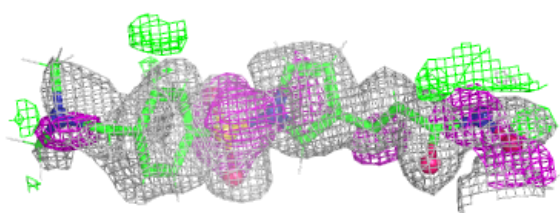
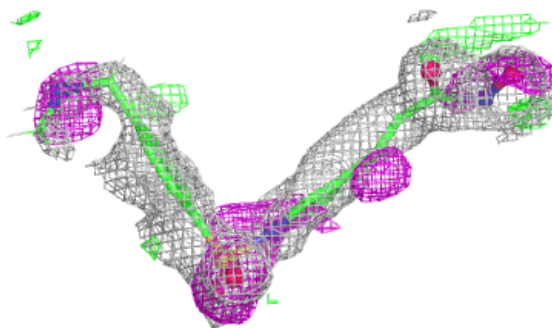
In the following table, the Atoms column lists the number of modelled atoms in the group and the number defined in the chemical component dictionary. The B-factors column lists the minimum, median, 95th percentile and maximum values of B factors of atoms in the group. The column labelled 'Q< 0.9' lists the number of atoms with occupancy less than 0.9.

Mol	Type	Chain	Res	Atoms	RSCC	RSR	B-factors(Å ²)	Q<0.9
2	PHE	A	501	11/12	0.44	0.27	42,48,51,52	0
5	P7D	A	505[A]	24/24	0.74	0.18	22,29,39,41	43
5	P7D	A	505[B]	24/24	0.74	0.18	22,29,39,39	43
6	EDO	A	506	4/4	0.78	0.18	28,30,33,38	0
6	EDO	B	505	4/4	0.83	0.31	28,29,30,35	0
6	EDO	B	506	4/4	0.90	0.12	26,30,32,42	0
5	P7D	B	504	24/24	0.91	0.12	16,23,40,43	0
4	K	B	503	1/1	0.96	0.05	18,18,18,18	1
4	K	A	503	1/1	1.00	0.01	11,11,11,11	0
4	K	A	504	1/1	1.00	0.07	16,16,16,16	0
4	K	B	502	1/1	1.00	0.02	11,11,11,11	0
3	ZN	A	502	1/1	1.00	0.02	15,15,15,15	0
3	ZN	B	501	1/1	1.00	0.02	13,13,13,13	0

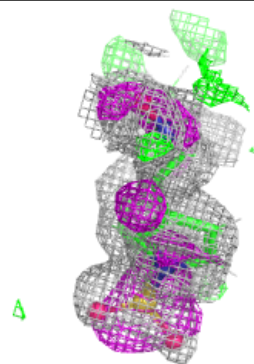
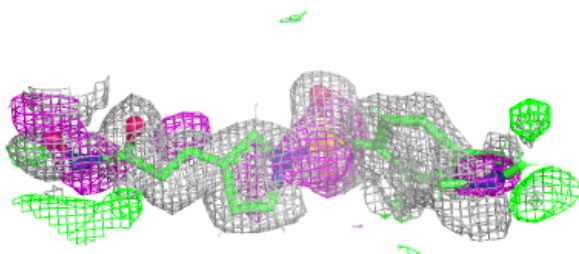
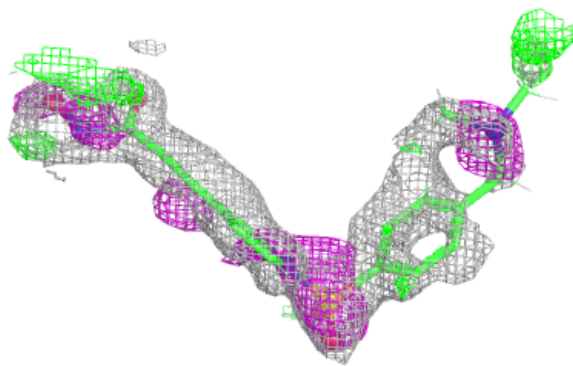
The following is a graphical depiction of the model fit to experimental electron density of all instances of the Ligand of Interest. In addition, ligands with molecular weight > 250 and outliers as shown on the geometry validation Tables will also be included. Each fit is shown from different orientation to approximate a three-dimensional view.

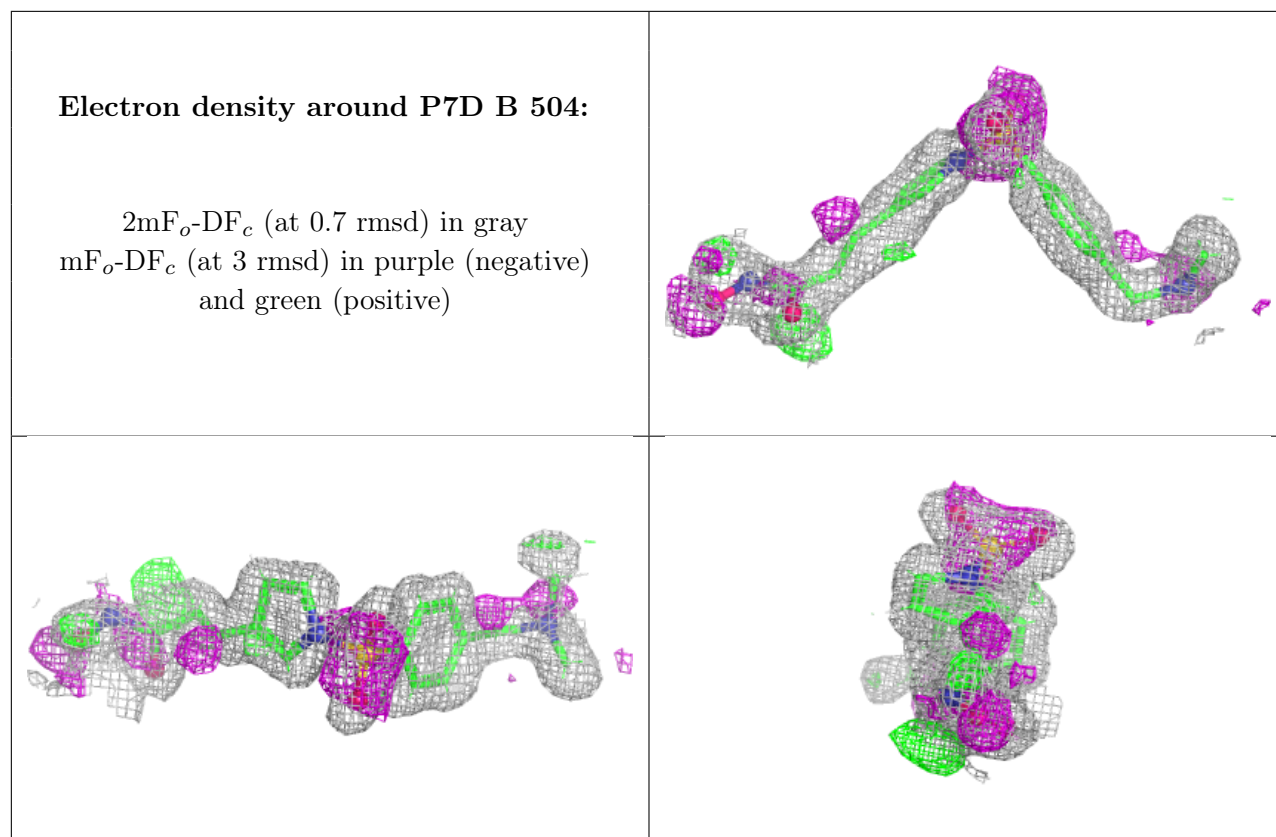
Electron density around P7D A 505 (A):

$2mF_o-DF_c$ (at 0.7 rmsd) in gray
 mF_o-DF_c (at 3 rmsd) in purple (negative)
and green (positive)

**Electron density around P7D A 505 (B):**

$2mF_o-DF_c$ (at 0.7 rmsd) in gray
 mF_o-DF_c (at 3 rmsd) in purple (negative)
and green (positive)





6.5 Other polymers [i](#)

There are no such residues in this entry.